



Genuine accessories for the A-Class

Mercedes-Benz



CONTENTS

EXTERIOR

Light-alloy wheels | Wheel accessories | Styling accessories _____ **04**

TELEMATICS

iPod integration | Navigation | Telephony _____ **12**

INTERIOR

Interior appointments | Child safety _____ **18**

CARGO & CARE

Carrier systems | Load compartment accessories _____ **24**

COLLECTION

Mercedes-Benz Lifestyle Collection _____ **36**









Light-alloy wheels
Wheel accessories
Styling accessories

EXTERIOR



Ambition

A Mercedes is a Mercedes. The door closes with a satisfying sound. The engine purrs gently, yet delivers concentrated power on demand.

All of the qualities that make a Mercedes-Benz so distinctive can also be found in the A-Class. And here you can find a range of items to make your particular A-Class even more distinctive – including **incenio** designer wheels which can make a radical difference to your car's looks.

Are you a sporty type or are your tastes more elegant? Let your ambitions set the tone.

Asaramas | 5-spoke wheel

incenio designer wheel

Finish: sterling silver

Wheel: 7 J x 17 ET 54

Tyre: 215/45 R17



incenio designer wheels

Rim locks

Valve caps

Wheel bolts

Anshan | 10-spoke wheel

incenio designer wheel

Finish: sterling silver

Wheel: 6 J x 16 ET 46

Tyre: 195/55 R16



Kochab | 12-spoke wheel

incenio designer wheel

Finish: sterling silver

Wheel: 6 J x 16 ET 46

Tyre: 195/55 R16

Option in titanium silver also available

On all light-alloy wheels, use wheel bolt A211 401 0370 and the corresponding rim lock B6 647 0155.

Light-alloy wheels are supplied without tyres, wheel bolts or hub caps.

Wheel bolts

| not pictured |

Valve caps

Rim locks

Set consisting of coded key and one lock per wheel



EXTERIOR



5-spoke wheel

Finish: titanium silver

Wheel: 6 J x 16 ET 46

Tyre: 195/55 R16



7-spoke wheel

Finish: sterling silver

Wheel: 6 J x 16 ET 46

Tyre: 195/55 R16

Option in titanium silver also available



7-twin-spoke wheel

Finish: sterling silver

Wheel: 6 J x 16 ET 46

Tyre: 195/55 R16

Option in titanium silver also available



9-spoke wheel

Finish: titanium silver

Wheel: 6 J x 15 ET 44

Tyre: 185/65 R15

Wheel: 6 J x 16 ET 46

Tyre: 195/55 R16

10-twin-spoke wheel

Finish: titanium silver

Wheel: 6 J x 16 ET 46

Tyre: 195/55 R16

5-spoke wheel

Finish: titanium silver

Wheel: 6 J x 16 ET 46

Tyre: 195/55 R16



Tyre pressure gauge

Compact design. Saves readings. Suitable for all tyre valves (including cycle tyres). Keeping tyres at the optimum pressure saves fuel and reduces tyre wear. Supplied with leather pouch | not pictured |





6-spoke wheel

Finish: sterling silver

Wheel: 7 J x 17 ET 54 | Tyre: 215/45 R17

Option in titanium silver also available

Hub caps

Protect the hub from dirt.

Available in the following versions:

- 1** | Classic Roadster design in blue
- 2** | Classic Roadster design in black
- 3** | Sterling silver with chrome star
- 4** | Titanium silver with chrome star

*Mercedes-Benz
light-alloy wheels*

Hub caps

Tyre pressure gauge

EXTERIOR



18" AMG 5-spoke wheel | Style III
Finish: titanium silver
Wheel: 7 J x 18 ET 54 | Tyre: 215/40 R18

7-spoke wheel
Finish: sterling silver
Wheel: 7 J x 17 ET 54 | Tyre: 215/45 R17
Option in titanium silver also available



Roof spoiler

The roof spoiler is precision-tailored to the body of the A-Class for a distinctive and sporty look. Supplied primed. To be painted in body colour by your Mercedes-Benz partner
| also pictured on page 10 |



*Mercedes-Benz
light-alloy wheels*

AMG light-alloy wheels

*Door handle recesses
Exterior mirror housings*

Indicator bulbs

Mud flaps

Roof spoiler

Snow chains

Note: the roof spoiler is not compatible with the tailgate-mounted bicycle rack (see page 29)

Mud flaps

Protect the underbody and the sides of the car from loose chippings and dirt. For front and rear axle
| pictured above right |

Snow chain systems

Rudmatic-Disc has a user-friendly design and can be fitted quickly. A tough plastic disc protects your prized light-alloy wheel from scratches. Your Mercedes-Benz partner will be happy to advise you on this and other snow chain systems

High-sheen chromed exterior mirror housings

High-sheen chromed exterior mirror housings - an elegant highlight from the sparkling range of coordinating exterior refinements

High-sheen chromed door handle recesses

Round off your A-Class's chrome finish and protect the paintwork from scratches

Chrome-look indicator bulbs

Mirrored indicator bulbs round off the chrome finish of your A-Class to perfection
| standard equipment pictured right |



EXTERIOR

10:33 PM

Navi

Audio

Phone

Video

System

3 You Know I Love You

00:07

iPod

Blues Kingpins

B.B. King

Media

Music

Media

Sound

ON

REAR



iPod® Interface

*Media Interface
consumer cables*

Audio/navigation

Telephony

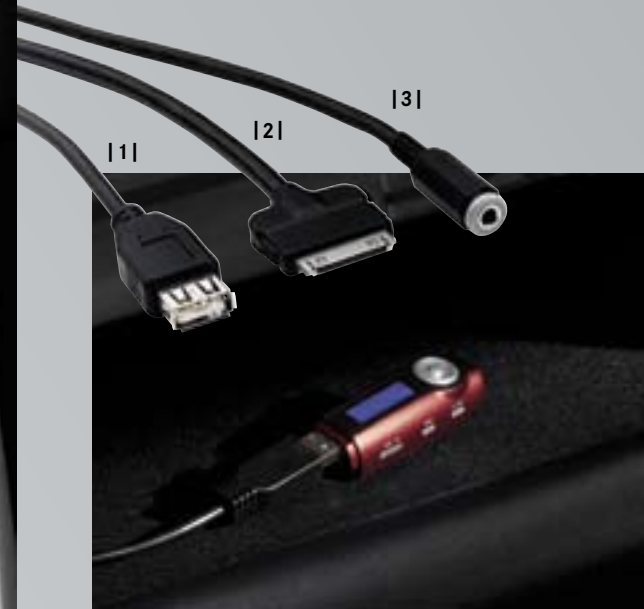
TELEMATICS



Applause

A symphony by Beethoven or a concert by the Stones? Whichever you prefer, you've got front-row seats inside your A-Class.

With the optional Media Interface you can plug in MP3 players with a USB or AUX connection, Apple iPods and even the iPhone. There's plenty more to applaud overleaf too.





Mercedes-Benz iPod® Interface Kit³

It's easy to control your iPod via the multifunction steering wheel: scroll through the menus [A], adjust the playback and volume [B] and display the artist/title of your choice in the instrument cluster [C].

As with the Mercedes-Benz Media Interface, the connection for your iPod is in the glove compartment. Your iPod's battery is charged while it is connected.

No factory-fitted optional extra required

The Interface Kit is not compatible with the Audio 5 CD (Code 520)

Media Interface consumer cables

For models with optional extra "Media Interface" (Code 518)

Set of 3 cables, designed to connect various players (one at a time) to the pre-installed Media Interface in the glove compartment. Allows you to select tracks and adjust the playback via your car's audio system.

The current status of your player also appears in the central driver's display, helping you to keep your attention focused on the traffic.

Designed to connect iPods¹ [2] and devices with USB² [1] or AUX [3]



iPod/iPhone holder³

Black plastic holder for the glove compartment. Holds your iPod in place. Soft, flock surface protects the player from scratches and prevents it sliding around



¹ For details and a list of the supported players, please contact any Mercedes-Benz service outlet or visit the "Accessories" section of our website: www.mercedes-benz.com

² Supported formats MP3, WMA and AAC. For further details, contact your Mercedes-Benz partner

³ The Mercedes-Benz Interface Kit allows you to listen to the music on your iPhone. It does not support the phone function

The iPod Interface Kit and the iPod holder are compatible with the following models: iPod from 4th generation | iPod video | iPod photo | iPod U2 | iPod mini | iPod nano 1st, 2nd and 3rd generation | iPod classic | iPod touch | iPhone

iPod/iPhone holder cannot be used in conjunction with Media Interface consumer cables

Optional extra Media Interface (Code 518) not available for Audio 20 CD without CD changer (Code 523) or Audio 5 CD (Code 520)

TELEMATICS

iPod Interface Kit
iPod/iPhone holder

Media Interface
consumer cables



Audio 5 CD

Radio and CD player with monochrome display. Features FM/AM single tuner with RDS function. Can be operated via the multifunction steering wheel
Audio 5 CD only available in conjunction with loudspeaker pre-installation (Code 533)



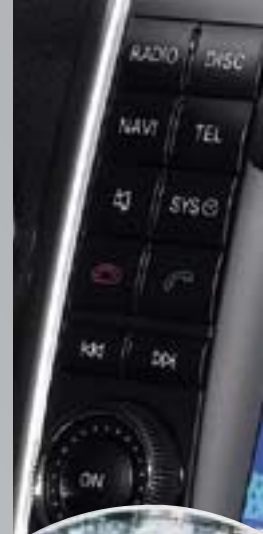
Audio 20 CD with CD changer

Double-tuner radio with 5" colour display. Bluetooth interface with hands-free function. CD changer is MP3-compatible. Can be operated via the multifunction steering wheel



Audio 50 APS with 6-DVD changer

Navigation system and car hi-fi combined in one unit which can be operated via the multifunction steering wheel. Dynamic route guidance via RDS/TMC. Navigation arrows shown on 5" TFT colour display. Bluetooth connectivity for automatic transfer of contacts, with hands-free function as standard. Double-tuner radio with 4-channel amplifier for outstanding sound. DVD changer controls. Also available without DVD changer as an option



Mobile-phone holders

When it comes to selecting a mobile for your Mercedes-Benz, you've never had so much choice. One "click" is all it takes to replace the system's intelligent mobile-phone holder. It takes a matter of seconds and is as straightforward a process as inserting the mobile into the holder itself. Changing your mobile and even alternating between different models of mobile no longer presents a problem. There are no compromises when it comes to convenience-enhancing technology either: the telephone can be operated via the multifunction steering wheel, and the telephone status and call information are displayed in the central multifunction display - as you would expect.

To use a mobile-phone holder, your car must be factory-fitted with one of the following optional extras:

Code 386 Convenience telephony

Code 388 Mercedes-Benz mobile phone (UHI)

Holders are available for a variety of popular mobile phones. Please contact your Mercedes-Benz partner for details. For further information about using the phone while in your car, see our Mercedes-Benz telematics brochures





COMAND APS with 6-DVD changer

The new COMAND APS now offers even more convenience and freedom when you're on the move: your route is navigated with impressive speed, thanks to the integral hard drive. The MUSIC REGISTER has up to 4 GB of memory, offering virtually unlimited space for your favourite music. COMAND APS plays back music from DVDs and CDs and from SD memory cards. The optional Media Interface (see page 15) also allows you to connect your portable music player. And for convenience and enhanced safety, all of these functions can be controlled via your COMAND system. Other features: Bluetooth® connectivity, 6.5" TFT colour display, dynamic route guidance (RDS/TMC), double-tuner radio with 4-channel amplifier for outstanding sound, DVD changer controls. Also available without DVD changer as an option



Mercedes-Benz StreetPilot III

An all-rounder with an excellent sense of direction: the retrofit navigation system with integral MP3 player and Bluetooth interface for hands-free use of your mobile phone. 4.3 touchscreen with zoomable 3D map display. Pre-installed with European road network. Automatic radio mute and TMC congestion avoidance function. Another highlight: the text-to-speech function for voice input of road names

The data for the Mercedes-Benz navigation systems is regularly updated. Please ask your Mercedes-Benz partner for the latest map versions



Europe navigation DVD for COMAND APS

The whole of Europe on one DVD



Europe navigation DVDs for Audio 50 APS

The whole of Europe on three DVDs

TELEMATICS

Audio 5 CD
 Audio 20 CD
 Audio 50 APS
 COMAND APS
 Mercedes-Benz StreetPilot III
 Mobile-phone holders
 Navigation DVDs

A close-up photograph of a car's interior trim. A brushed metal strip is mounted on a black leather seat. The word "Mercedes" is engraved in a blue, serif font on the metal. Below the metal strip is a red leather surface. A white vertical bar is on the left side of the image.

Mercedes



*Interior appointments
Child safety*

INTERIOR

Ambience

Whether you look at the inside of a car in functional terms or see it as part of your personal living space, the interior of the A-Class doesn't disappoint.

And nor do our genuine accessories. Our floor mats, for example, are subjected to intensive stress testing. Inside your A-Class they are a perfect fit, because their design is based on original CAD data from the vehicle development process.

Genuine accessories – for all-round quality.

Illuminated door sill panels

The blue illuminated Mercedes-Benz lettering is activated every time you open the door to get in or out. These illuminated door sill panels, in brushed stainless steel, are a further “highlight” of the A-Class | pictured on p 18 |

Roller blind, rear side window

The roller blinds are designed for the rear doors. Simple to use and extremely convenient. Provide optimum shade in bright sunlight | for Saloon only |

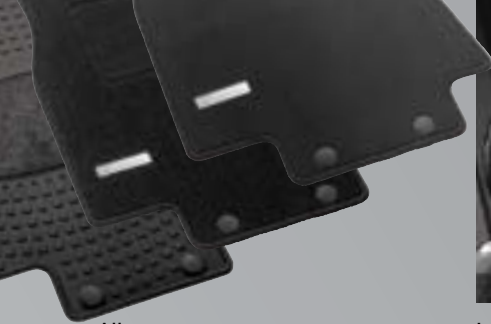
Fixed sunblind, rear window

Designed for the rear window | for Saloon and Coupé | not pictured |

Door sill panels, not illuminated

Non-illuminated stainless steel door sill panels with chrome-backed Mercedes-Benz lettering. Available with black or beige base





All-season mats, rep mats, velour mats

Durable, hardwearing materials. Available in various colours to match the interior. Can be clip-fastened to the floor of the vehicle to prevent slipping



Luxury head restraint cover

Anthracite. For the head restraints



Back cushion

Ergonomic, individually adjustable cushion, designed to support the back on long journeys. Available in anthracite



Cleanbag

The ideal way to keep the interior clean when you're on the move: the small "Cleanbag" is simply attached to the net in the front passenger footwell

Stowage box

Provides extra stowage space below the driver or front passenger seat, away from prying eyes

Pedal covers in stainless steel

High-sheen stainless steel pedals with non-slip stud panel. Available for automatic and manual models

Armrest in centre console

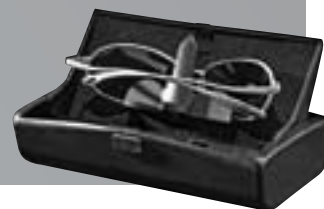
| with cup holder insert |

Comfortable armrest with drawer, cup holder and a further small, open stowage compartment. Integrated in the centre console



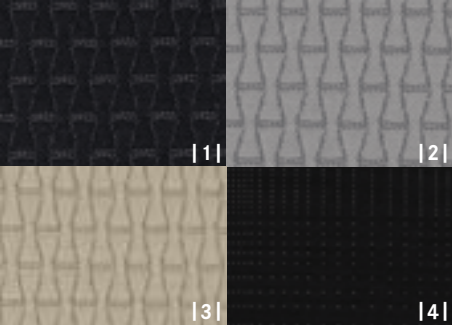
Spectacles box

Universal - adjusts to different sizes of spectacles/sunglasses



INTERIOR

- Armrest*
- Back cushion*
- Cleanbag*
- Door sill panels*
- Floor mats*
- Luxury head restraint cover*
- Pedal covers*
- Roller blinds*
- Spectacles box*
- Stowage box*



Seat covers

Easy-care polyester fabric, available in the following designs:

- 1 | ELEGANCE /AVANTGARDE, black
- 2 | and alpaca grey
- 3 | ELEGANCE, beige
- 4 | and CLASSIC, black

Additional interior mirror

Designed to help you keep an eye on what's going on in the rear of the car. This practical product, made from shatterproof safety glass, is simple to snap into place



Vario bag

Plenty of extra stowage space for the really important things in life.

Available in three designs: "DaimlerSquare" fabric | pictured | "Angel & Driver" fabric Alcantara, java



"KID" child seat

Booster seat with height-adjustable backrest. The belt guides at the sides prevent the lap belt from sliding over the child's abdomen. Available with automatic child seat recognition as an option. For children between the ages of around 3.5 and 12 (approx. 15 to 36 kg). Removable, washable "DaimlerSquare" cover



Padded play table for integral child seat

Protects the child's abdomen when using the integral child seat. For children between the ages of around 2 and 4 (12.5 to 18 kg)



“KidFix” child seat

Booster seat with height-adjustable backrest. Because it covers the entire shoulder area of younger and older children, it is very comfortable and provides optimum protection in the event of side impact. Fixed in place using ISOFIX points or 3-point seat belt. Available with automatic child seat recognition as an option. For children between the ages of around 3.5 and 12 (15 to 36 kg). Removable, washable “DaimlerSquare” cover | Expected to be available from autumn 2008 |



“DUO plus” child seat

Optimum safety for children between the ages of around 8 months and 4 years (9 to 18 kg). Fitted as standard with top tether, an additional belt for securing the head section, a height-adjustable shoulder belt and ventilation channels. With automatic child seat recognition and ISOFIX attachment points. Adjustable tilt. Removable, washable “DaimlerSquare” cover



“BABY-SAFE plus” child seat

Deep, moulded seat design offers extra side-impact protection for optimum safety. Special padding, designed to protect particularly vulnerable body areas of children up to around 15 months (up to 13 kg). Removable, washable “DaimlerSquare” cover



[A]

[B]

Cover for integral child seat

Hardwearing, easy-care material. The side bolsters offer additional support and transform the booster-style integral child seat [A] into a fully fledged child seat for children up to the age of around 12 (up to 36 kg) [B]

Mercedes-Benz child seats are available with automatic child seat recognition as an option. If your car also has automatic child seat recognition, the technology automatically deactivates the front passenger airbag when a child seat with automatic child seat recognition is installed on the front passenger seat. All child seats are also suitable for use in vehicles without ISOFIX attachment points.

For further information on the Mercedes-Benz child safety range, ask your Mercedes-Benz partner for a copy of our separate brochure

- Child seats
- Additional interior mirror
- Padded play table
- Seat covers
- Vario bag

INTERIOR





Carrier systems

*Load compartment
accessories*

CARGO & CARE

Addition

People who choose an A-Class appreciate the way this compact car offers so much space. But it's not just the interior that is flexible when it comes to fitting everything in – the genuine accessories pictured here open up a whole range of transport options on the outside too.

Add a few individual solutions to the range of ideas your A-Class already features. You'll be impressed by the result.



Mercedes-Benz roof boxes

Elegant, aerodynamic design, made for your Mercedes-Benz. High-quality, extremely durable material. Available in two colours: titanium metallic [A] and matt silver [B]

1 | Mercedes-Benz roof box XL

family box | Capacity: approx. 450 litres. Available with opening on right or left. Optional accessories: luggage set and ski rack insert

2 | Mercedes-Benz roof box L

sports box | Capacity: approx. 330 litres. Available with opening on right or left. Optional accessories: luggage set and ski rack insert

3 | Mercedes-Benz roof box M

weekend box | Capacity: approx. 400 litres. Available with opening on right or left

Luggage set

| for Mercedes-Benz roof box XL |

Four bags, designed to make perfect use of the space available in the roof box XL. Made from hardwearing, water-repellent polyester. Plus two matching ski bags, each designed to hold max. two pairs of skis. Ski bag also available separately | pictured left |

Luggage set

| for Mercedes-Benz roof box L |

Four bags made from hardwearing, water-repellent polyester. Tailored to the dimensions of the roof box L | pictured left |

Ski rack insert | for Mercedes-Benz roof box XL |

A secure hold for up to five pairs of skis, subject to ski geometry. For Mercedes-Benz roof box XL | pictured left |

Ski rack insert | for Mercedes-Benz roof box L |

A secure hold for up to three pairs of skis, subject to ski geometry. For Mercedes-Benz roof box L | not pictured |



Basic carrier bars
Luggage sets
Roof boxes
Ski rack inserts
Transport bag

CARGO & CARE

New Alustyle basic carrier bars

The New Alustyle system opens up a wealth of flexible options when it comes to transporting sports equipment and luggage. Simply combine the New Alustyle basic carrier bars with a variety of different roof-mounted carriers which you can see here and on the following pages. The basic carrier bars are precisely tailored to the body of your A-Class, ensuring the highest degree of safety and optimum aerodynamics

Transport and stowage bag

Robust bag, made from a high-quality nylon fabric. Protects the basic carrier bars and makes it easier to transport them





Rear-mounted bicycle rack for trailer coupling

The rear-mounted bicycle rack is easy to attach to the trailer coupling. A simple fold-down mechanism (pictured top left on page 29) means that the load compartment can still be opened. Basic version for two cycles. Lockable.

Available as an option:

Extension kit for third cycle

New Alustyle bicycle rack

Depending on the maximum roof load, up to four bicycle racks can be fitted per pair of basic carrier bars. Each bicycle rack can hold one bicycle with a max. frame diameter of 98 mm (circular frame tubes) or 110 x 70 mm (oval frame tubes). The support frame folds down when not in use, reducing drag when travelling without cycles. Cycles can either be attached to the rack once it has been fitted to the roof or before it is fitted | also pictured right |

The convenient design of the Mercedes-Benz bicycle rack allows the cycle to be attached at ground level. The cycle is simply mounted on the rail alongside the vehicle and both are then fitted to the basic carrier bars





The laden bicycle rack can be pivoted downwards, allowing the load compartment to be opened

Mercedes-Benz Bikes

These sporty and elegant bikes, with their exclusive Mercedes-Benz design, are suitable for everyday all-round use and for touring. For more detailed information, please see our "Mercedes-Benz Bikes" brochure



Extension kit for rear-mounted bicycle rack

Allows you to add a third cycle

When the rear-mounted bicycle rack is unladen, simply fold down the vertical retaining bar to access the load compartment. This function also allows space-saving stowage of the rack when removed



Trailer coupling

Detachable.

Max. drawbar load: 75 kg

Adapter

For trailer with 7-pin plug



Coil locks

Designed to help prevent theft. Available as an option for the bicycle rack



Tailgate-mounted bicycle rack

Optimally attuned to the contours of the A-Class, the rack ensures a secure hold. Designed for a maximum of two cycles. Lockable. The innovative two-piece design makes it easier to fit and remove the rack. Cannot be fitted in conjunction with the roof spoiler

*Adapter
Bicycle rack
Coil locks*

*Extension kit for
rear-mounted bicycle rack*

*Rear-mounted bicycle rack
Tailgate-mounted bicycle rack
Trailer coupling*

CARGO & CARE



Internal bicycle rack

| For up to two standard cycles, up to max. wheel size of 26" |

The internal bicycle rack protects your cycles from the elements and safeguards them against theft. Supplied with a practical, elegant bag which can be used to secure the removed front wheels in place during your journey



**New Alustyle ski and snowboard rack
"Comfort"**

For up to 6 pairs of skis or 4 snowboards.
Lockable. Practical pull-out function
makes loading and unloading easier
| pictured left and above |





Coolbox

| black/grey | Hard case with fabric cover featuring pockets for extra items. Cold/hot switch.
Capacity: 24 litres. 12V connection.
Adjustable carrying strap



Coolbag

| black | Fabric outside, plastic liner inside. Outside pockets offer plenty of room for extra items.
Capacity: 12 litres. 12V connection.
Adjustable carrying strap

Rectifier

Allows the Mercedes-Benz coolbox and the coolbag to be connected to a 230 V socket at home



New Alustyle ski and snowboard rack "Standard"

For up to 4 pairs of skis or 2 snowboards. Lockable
| pictured right |



CARGO & CARE

*Internal bicycle rack
Ski/snowboard rack
Coolbox
Coolbag
Rectifier*



Stowage crate

Can be divided into four sections using the adjustable partitioning elements. Ideal for transporting objects you don't want to tip over or slide around. Full functionality only in conjunction with the shallow boot tub

Shallow boot tub

Simple to clean. Non-slip thanks to Perl-M material. Suitable for transporting foodstuffs



Deep boot tub

The hygienic way to transport objects in the load compartment. Suitable for transporting foodstuffs

Stowage tray below load floor

Partitioned. Ideal for stowing small items such as the shopping crate or an umbrella.

Note: when using the stowage tray, the load floor must be in its upper position



Tie-down strap

Even heavy objects can be secured in place easily using this strap | not pictured |

Ski bag for interior

For up to four pairs of skis. With carrying strap and straps for attaching to load-securing rings in load compartment



Luggage-securing feature

Ingenious solution to the problem of luggage sliding around in the load compartment. Attaches securely around the object in question thanks to Velcro fastening

Shopping crate

anthracite | Collapsible

Fluorescent jacket

Already compulsory in many countries, the bright orange and yellow fluorescent jackets with reflective stripes are conspicuous even in the dark. Available individually or as a pack of two



- Boot tubs*
- Fluorescent jackets*
- Luggage-securing feature*
- Shopping crate*
- Ski bag*
- Stowage crate*
- Stowage tray*
- Tie-down strap*

CARGO & CARE



Reversible mat

This reversible mat features high-quality velour on one side and non-slip rubber on the other. It not only helps keep the original floor of the load compartment clean but the integral load sill protection also protects the load sill from scratches

Non-slip mat

black | Non-slip mat made from oil and acid-resistant polyester. Designed to fit the contours of the load compartment





Quickpark

Acoustic warning system for the rear, making precision parking much easier and helping to prevent damage to the vehicle when manoeuvring

Safety tow rod

2-piece steel rod with patented connector and cotter pin. For trailer couplings and towing eyes. Approved for vehicles with a gross vehicle weight of up to 3.2 t



Luggage nets

Available for the floor of the load compartment and the rear bench seat. Prevent lightweight objects from sliding around during your journey. All nets are in pocket format



Box of replacement bulbs

Practical and ready at hand when needed: all the right bulbs for your car. Supplied in protective packaging

Charger with trickle charge function

With its cutting-edge technology, the Mercedes-Benz charger ensures the longest possible battery life. Available in a 3.6 amp version (below) and a 25 amp version (not pictured)



- Box of replacement bulbs*
- Charger unit*
- Luggage nets*
- Non-slip mat*
- Quickpark*
- Reversible mat*
- Tow rod*

CARGO & CARE





*Mercedes-Benz
Lifestyle Collection*

COLLECTION



Umbrella

Full-length black umbrella with black aluminium shaft, automatic mechanism and windproof design. Fabric 100% polyester with special water and dirt-repellent TEFLON® coating and silver reflex piping. Black plastic hook handle with elegant satined finish. Large logo print in silver. Diameter: approx. 115 cm

AVANTGARDE leather handbag

Dazzling elegance with a touch of panache in the contemporary-style zip tassel and studded handles. Zipped main compartment with one slot pocket and one mobile-phone pocket. Two side compartments with magnetic fasteners. One side compartment with snap hook for keys and detachable purse



A to Z

In the Mercedes-Benz alphabet A is for A-Class and for accessories. And that's not just accessories for your car.

This page shows some of the exciting products available as part of the Mercedes-Benz Collection. To find out more, ask your Mercedes-Benz partner for a copy of our "Lifestyle Collection" brochure.



Style watch
 Water-resistant to 5 ATM. Date feature. Sandwich-structure dial with luminous underlay. Case made from polished stainless steel with screw back. Hardened mineral crystal. Black leather strap. Stainless steel buckle. Mercedes-Benz engraved on back of case. Available with black or silver dial



Model car | 1:43
 Available in polar silver, atoll blue and comet grey



"A" key ring
 One letter – one message. And a declaration of affinity to a very special brand. Key ring with split ring, central element and moveable brass link – with a replica of the letter A as it appears on the tailgate of the car. The fob is virtually nickel-free and plated with high-quality rhodium, giving it a particularly bright silver colour. The high-shine polished finish and the matt links round off the key ring to perfection

Outdoor jacket
 All set for the adventures of everyday life. The microfibre outer material gives wind and rain the cold shoulder, while the soft fleece lining keeps the wearer snug and warm. Two welt pockets, one zipped pocket and an inside pocket for a mobile phone. Stylish bomber jacket design with logo embroidered on front. Colour: black

AVANTGARDE wallet
 Attractive looks can brighten up your day, attractive inner qualities make you want to celebrate. This wallet offers the full package. With coin compartment and slot pockets inside. Adjustable press-stud fastening on back, with twelve card slots

- Key ring
- Leather bag
- Model car
- Outdoor jacket
- Umbrella
- Wallet
- Watches

COLLECTION

Genuine accessories for the A-Class

Light-alloy wheels are supplied without tyres, wheel bolts or hub caps.

Description	p	Item no.
"A" key ring	39	B6 606 0195
Adapter	29	A000 821 1656
Additional interior mirror	22	B6 681 8618
All-season floor mats (LHD, complete set, black)	21	on request
Armrest in centre console	21	B6 781 2310
Audio 5 CD	16	on request
Audio 20 CD with CD changer	16	on request
Audio 50 APS with 6-DVD changer	16	on request
AVANTGARDE leather handbag	38	B6 695 3923
AVANTGARDE wallet	39	B6 695 3927
AMG light-alloy wheels		
18" 5-spoke wheel Style III (titanium silver) (FA/RA)	10	B6 603 0015
"BABY-SAFE plus" child seat (with automatic child seat recognition)	23	A000 970 1000
Back cushion	21	B6 781 2370
Box of replacement bulbs (ECE)	35	A204 580 0010

Description	p	Item no.
Charger (ECE version) 3.6 A	35	B6 754 2028
Chrome-look indicator bulbs (ECE)	11	A000 580 2410
Cleanbag	21	B6 781 2376
Coil locks (for New Alustyle bicycle rack, 3 mm, set of 2, common key)	29	B6 685 1706
COMAND APS with 6-DVD changer	17	on request
Coolbag	31	B6 681 8725
Coolbox	31	A000 820 4206
Cover for integral child seat	23	B6 687 0099
Deep boot tub	33	B6 664 8307
"DUO plus" child seat (with automatic child seat recognition)	23	A000 970 1100
"DUO plus" child seat (without automatic child seat recognition)	23	A000 970 1600
Europe navigation DVDs for Audio 50 APS	17	on request
Europe navigation DVD for COMAND APS	17	on request
Extension kit for 3 rd cycle	29	B6 685 1113

Description	p	Item no.
Fixed sunblind, rear window	20	B6 669 1114
Fluorescent jacket (single)	33	B6 658 8201
Fluorescent jackets (pack of 2)	33	B6 658 8200
High-sheen chromed door handle recesses	11	B6 688 1237
High-sheen chromed exterior mirror housings (set)	11	B6 688 1258
Hub caps (Roadster design in black)	09	B6 647 0201
Hub caps (Roadster design in blue)	09	B6 647 0120
Hub caps (star with laurel wreath in royal blue)	-	B6 647 0210
Hub caps (sterling silver with chrome star)	09	B6 647 0206
Hub caps (titanium silver with chrome star)	09	B6 647 0202
Illuminated door sill panels (set of 2, front)	20	on request
Internal bicycle rack	30	B6 685 1154
iPod/iPhone holder	15	B6 782 4501

Description	p	Item no.
incenio designer wheels		
Asaramas ¹ 5-spoke wheel 17" (FA/RA)	07	B6 647 4512
Anshan ¹ 10-spoke wheel 16" (FA/RA)	07	B6 647 4511
Kochab ¹ 12-spoke wheel 16" (FA/RA)	07	B6 647 1912
Kochab ² 12-spoke wheel 16" (FA/RA)	07	B6 647 4403
"KID" child seat (with automatic child seat recognition)	22	A000 970 1200
"KID" child seat (without automatic child seat recognition)	22	A000 970 1700
"KidFix" child seat	23	on request
Leather steering wheel, black for diesel models	-	B6 681 7731
Leather steering wheel, black for petrol models	-	B6 681 7730
Luggage net, floor of load compartment	35	B6 766 0091
Luggage net, rear bench seat	35	B6 766 0089
Luggage-securing feature	33	B6 664 8220
Luggage set (for MB roof box L)	26	B6 687 0095
Luggage set (for MB roof box XL)	26	A000 890 0511
Luxury head restraint cover	21	B6 798 3205

¹ Finish: sterling silver

² Finish: titanium silver

Genuine accessories for the A-Class

Description	p	Item no.
Light-alloy wheels		
5-spoke wheel ² 16" (FA/RA)	08	B6 647 4491
5-spoke wheel ² 16" (FA/RA)	08	B6 647 0820
6-spoke wheel ¹ 17" (FA/RA)	09	B6 647 4318
6-spoke wheel ² 17" (FA/RA)	09	B6 647 4408
7-spoke wheel ¹ 16" (FA/RA)	08	B6 647 4364
7-spoke wheel ² 16" (FA/RA)	08	B6 647 4404
7-spoke wheel ¹ 17" (FA/RA)	10	B6 647 1334
7-spoke wheel ² 17" (FA/RA)	10	B6 647 4406
7-twin-spoke wheel ¹ 16" (FA/RA)	08	B6 647 1823
7-twin-spoke wheel ² 16" (FA/RA)	08	B6 647 4402
9-spoke wheel ² 15" (FA/RA)	08	B6 647 1853
9-spoke wheel ² 16" (FA/RA)	08	B6 647 1854
10-twin-spoke wheel ² 16" (FA/RA)	08	B6 647 4490
Media Interface consumer cables	15	A001 827 7004
Mercedes-Benz iPod Interface Kit (ECE)	15	on request
Mercedes-Benz roof box M (titanium metallic, opens on right)	26	A000 840 2562
Mercedes-Benz roof box L (titanium metallic, opens on right)	26	A000 840 2362
Mercedes-Benz roof box XL (titanium metallic, opens on right)	26	A000 840 2762

Description	p	Item no.
Mercedes-Benz StreetPilot III	17	on request
Mobile-phone holders The range is being extended all the time. Please contact your Mercedes-Benz partner for details	16	on request
Model A-Class 1:43 (atoll blue)	39	B6 696 1984
Mud flaps (front set)	11	B6 652 8223
Mud flaps (rear set)	11	B6 652 8252
New Alustyle basic carrier bars	27	B6 781 2126
New Alustyle bicycle rack	28	A000 890 0293
New Alustyle ski and snowboard rack "Comfort"	30	B6 685 1703
New Alustyle ski and snowboard rack "Standard"	31	B6 685 1702
Non-illuminated door sill panels (set of 2, front)	20	on request
Non-slip mat (fitted)	34	B6 768 0030
Outdoor jacket	39	B6 695 4912-4917
Padded play table for integral child seat	22	B6 687 0098
Pedal covers in stainless steel (automatic models)	21	B6 647 2160
Pedal covers in stainless steel (non-automatic models)	21	B6 647 2161
Quickpark	35	B6 782 3816

¹ Finish: sterling silver

² Finish: titanium silver

Description	p	Item no.
Rear-mounted bicycle rack for trailer coupling (ECE)	28	B6 685 1111
Rectifier	31	A000 982 0021
Rep floor mats (LHD, complete set, black)	21	B6 635 9156
Reversible mat	34	B6 768 0092
Rim locks	07	B6 647 0155
Roller blind, rear side window ³ (left)	20	B6 669 1338
Roller blind, rear side window ³ (right)	20	B6 669 1339
Roof spoiler, primed	11	B6 688 1510
Rudmatic-Disc snow chain system (tyres: 185/65 R15 and 195/55 R16)	11	B6 758 3003
Safety tow rod	35	A000 890 0224
Seat covers	22	on request
Shallow boot tub	32	B6 664 8065
Shopping crate	33	B6 647 0995
Ski bag (single, for MB roof box L and XL)	26	B6 687 0114
Ski bag for interior	33	B6 766 0022
Ski rack insert (for MB roof box L)	26	A000 840 4718
Ski rack insert (for MB roof box XL)	26	A000 840 4818
Spectacles box	21	A000 810 0704

Description	p	Item no.
Stowage box below seat	21	B6 692 0105
Stowage crate	32	A000 814 0041
Stowage tray below load floor	33	B6 676 6252
Style watch (black dial)	39	B6 606 0186
Style watch (silver dial)	39	B6 606 0185
Tailgate-mounted bicycle rack	29	B6 685 1123
Tie-down strap	33	B6 647 2021
Trailer coupling (ECE, detachable)	29	B6 685 0061
Transport and stowage bag	27	A000 890 0111
Tyre pressure gauge	08	B6 658 8140
Umbrella	38	B6 695 6276
Valve caps	07	A203 401 0036
Vario bag (Alcantara, java)	22	A000 899 2061
Vario bag (Angel & Driver)	22	A000 899 1861
Vario bag (DaimlerSquare)	22	A000 899 1961
Velour floor mats (LHD, complete set, black)	21	B6 629 3509
Wheel bolts	07	B6 647 0159

³ Available for Saloon only

June 2008

Please note: changes may have been made to the products since this brochure went to press (30.05.2008). The manufacturer reserves the right to make changes to the design, form, colour and specification during the delivery period, provided these changes, while taking into account the interests of the vendor, can be deemed reasonable with respect to the purchaser. Where the vendor or the manufacturer uses symbols or numbers to describe an order or the subject of an order, no rights may be derived solely from these. The illustrations may show accessories and items of optional equipment which are not part of standard specification. Colours may differ slightly from those shown in the brochure, owing to the limitations of the printing process. This brochure has been compiled by Daimler of Germany and is distributed internationally. It provides a general indication of the range of models, features, optional extras and/or colours available in various countries. Some of the models, features, optional extras and/or colours may not be available in your country or may only be available in a different specification. Additionally some models, features, optional extras and/or colours may only be available in combination with others. For current and more specific information in relation to the range of models, features, optional extras and/or colours available in your country, and their pricing, you should contact your nearest authorised Mercedes-Benz Passenger Car Dealer.