

VOLVO S80



Intuitive car seeks like-minded driver.



There are luxury cars. And there's the Volvo S80. This is modern Scandinavian luxury in every detail—from a purposeful exterior design and airy interior, to the harmonious force of a masterful V8 and an audiophile Premium Sound system. More over, predictive and intuitive technologies accomodate your needs before you even notice them and help you negotiate traffic. So take your seat, and be seduced by grace, power and intelligence.



The Volvo S80. Your sixth sense.



Where control meets performance.



Imagine, just for a moment, a car that is gifted; A car blessed with power, control and an understanding of what goes on around it. Assume that it shares these gifts with its driver. The tensions of a dangerous route become fewer. The joy of an unwritten road becomes greater. And the prospect of a perfect drive becomes a real probability.



With an instinct for the perfect environment.



Volvo designers feel they've created an environment ideal for driver and passenger alike. Floating layers, inspired by Scandinavian landscapes, both converge and soothe. Much attention has been paid to comfort throughout the cabin. For example, advanced sensors automatically ensure the cabin air is as clean and comfortable as possible. And for the front seats, there are integrated fans to help you stay cool. After all, who knows who will travel inside it.





Because no two bodies are identical, the driving position is highly adaptable. The driver's seat itself provides world-class comfort and allows countless seating permutations through its multiple axis mechanism. The powered driving seat includes a memory function to save seating and door mirror positions for up to three drivers. Furthermore, the "step-free" adjustable steering column helps the driver to fine tune ergonomics.





ECC with IAQS

Electronic Climate Control (ECC) maintains the cabin temperature you choose and can be set independently for the left and right sides. Further contributing to your health and comfort, Volvo's unique humidity sensor helps ensure cabin air has an appropriate level of humidity according to the outside climate. Moreover, an Interior Air Quality System (IAQS) monitors incoming air for certain unhealthy gases such as carbon monoxide, ground-level ozone and nitrogen dioxide. If necessary, it will temporarily close external air vents to shut them out. Meanwhile, an active carbon filter prevents dust, exhaust particles, pollen and unpleasant odours from entering the car through the ventilation system.





CZIP

Clean Zone Interior Package (CZIP) is a feature over and above IAQS. It comprises a series of modifications to improve the interior climate, not least for people with allergies. Materials are chosen carefully to avoid harmful fumes. Surfaces are smooth so they're easy to clean – the natural rubber floor mats are a case in point. On days when it's at least 10°C outside, opening the car by remote triggers a 60-second ventilation cycle. The end result is cabin air that meets the approval of the Swedish Asthma and Allergy Association.

Ventilated front seats

Ventilated front seats are available with a choice of three settings. The comfort setting maintains body temperature (36–37°C) by drawing air through the perforations in the leather and cushioning of the seat. Utilising the car's air conditioning system, the cool air quickly eliminates moisture expelled by the body in hot weather or long journeys. Also, the Volvo S80 front seat heaters have three levels of heat to choose from.

Rear seat comfort

Ergonomically designed rear seats provide generous support of the body during long journeys. Rear seat relaxation is further enhanced with generous legroom and two adjustable air vents.

Heated rear seats

Rear seat passengers are invited to enjoy a direct source of heat at the push of a button. To suit individual preferences, there are three settings to choose from.





The Personal Car Communicator
—keeping you in touch with your Volvo.



Standard security features such as the sturdy door locks and electronic immobiliser help to prevent the tangible aspects of a break-in. The Personal Car Communicator, on the other hand, offers you the comfort of knowing the car's status when you left it—even when you can't see it.



Personal Car Communicator (PCC)

The PCC is an advanced remote control that combines keyless drive with two-way communication with your Volvo S80. Keep the PCC with you and the car unlocks automatically on your arrival. Start the engine by pressing a button on the dash, lock the car by pressing a button in the door handle. Later in the day, if you're wondering whether you've locked the car, the PCC can remind you; no matter where you are. On your return to the Volvo S80—within a radius of 60 to 100 metres—pressing the PCC information button will give you a current report on its status. If the alarm has been activated, the onboard heartbeat sensor will give you advanced warning if there's somebody in your car and an opportunity to evaluate the situation safely.

Keyless drive

Keyless drive lets you lock, unlock and start the car without having the key in your hand. As long as you have the Personal Car Communicator (PCC) with you, pulling the door handle automatically unlocks the door. With your foot on the brake pedal, the press of a button on the instrument panel starts the engine. To lock the car, press a button in the door handle or lock it with the PCC.

Remote controlled alarm

Connected to the doors, bonnet, boot and ignition, the alarm reacts to movement inside the car or the breaking of a window. A level sensor is added to deter thieves from jacking-up the car and stealing your wheels. And in an emergency situation, the further option of a panic button on the remote control or on the PCC allows you to raise the alarm for help.

Approach and Home Safe lighting

Activated with the remote control or with the PCC, Approach lighting provides a warm reception on a dark night. This consists of interior and side lights—ground lighting too, if you choose it. Home Safe lighting is activated with the headlight stalk as you leave the car, and provides a similar courtesy. This one includes a dipped headlight beam of light to accompany you to your door.

Ground lighting

Integrated in the door mirror, ground lighting is activated with the remote control or with the PCC. Beyond enhancing security to and from your car at night, it's also convenient when getting in and out.

Power and control. How often do you find them in perfect accord? In all its variants, the Volvo S80 offers fluid performance. Drivetrain and chassis perform as one. Acceleration is never delayed. Liveliness is assured by immediate response throughout the entire rev range. Volvo's premium source of power, the 315 hp V8, combines enormous capacity with superior refinement. The six-cylinder petrol engine will provide an exhilarating yet relaxing drive. And for the ultimate combination of performance and fuel-economy, there's the option of Volvo's smooth five-cylinder turbodiesel.



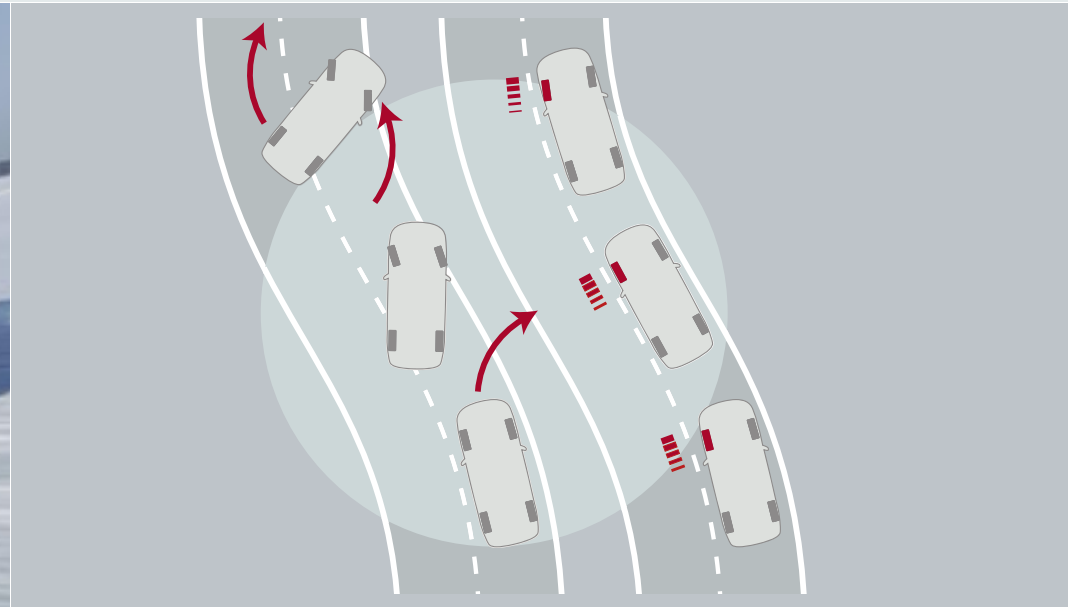
Fuel efficiency

Advanced engine technology and aerodynamics help keep down fuel consumption and carbon dioxide emissions—a main contributor to global warming. Volvo's high-performance turbodiesel with particle filter is the most fuel-efficient option.

Of course, all Volvo engines comply with stringent international environmental requirements. For example, the V8 is the world's first ultra-low emission vehicle II (ULEV II) compliant eight-cylinder engine.

DSTC

Faithful interpreter of road and driver.



Speed dependant steering

The optional speed-dependant power steering servo makes steering at low speeds effortless. Parking in small spaces is a case in point. The system offers a choice of three settings allowing you to choose a suitable level of road feel or steering sensitivity. Steering force remains constant when the car exceeds 80 km/h.



All-Wheel Drive with Instant Traction™

The new AWD* is an electronically controlled all-wheel drive system developed with the high torque of the larger engines in mind. Constant hydraulic pressure ensures that power is promptly distributed among the wheels with the best grip. Wheel spin is minimised while acceleration and stability are enhanced, even in slippery conditions. For instance, when cruising on straight dry roads, front wheels receive up to 95% of the power for efficiency. As conditions change, up to 50% of the power can be directed to the rear wheels. When cornering, the system channels power back and forth to provide sharp turning and greater stability throughout the curve.

* Only available for the V8 AWD



Dynamic Stability and Traction Control (DSTC)

Volvo's DSTC includes a number of functions that help enhance the safety and pleasure of driving. It improves traction in slippery situations by controlling the rotational speed of the drive wheels. By reducing the engine's power output or by braking one or more wheels, the system helps to counteract skids. It can also be set to allow a certain degree of wheel spin to provide better traction in snowy conditions.

Optimum handling is like a double-edged sword. It's all about adhering to a road in accordance with your intentions, while conveying just the right amount of road surface information. Defined by high torsional rigidity, firm stance and agility, the Volvo S80 chassis is a faithful interpreter of road and driver. Its multi-link rear suspension counteracts any tendency to under-steer while enhancing stability. McPherson front suspension struts promote quick and crisp response to sudden turning and braking. And rack and pinion steering affords distinctive yet balanced feedback.



The Four-C active chassis
—part of a multilayered personality.



On long straight stretches or winding country roads, there are many aspects of a car's engineering that dictate how it feels to drive. Perhaps most important is the chassis. Above and beyond the manifestation of technology that's standard in the Volvo S80, the Four-C active chassis will give you even greater control over the driving experience.



Continuously Controlled Chassis Concept (Four-C)

Further refined, Four-C now provides a choice of three distinctive driving modes—Comfort, Sport or Advanced. Whichever you choose, the system monitors the car, road and driver 500 times per second, simultaneously adjusting each shock absorber to maintain optimal handling. At the heart of the system is Volvo's semi-active suspension with continuously controlled Monroe-Öhlins shock absorbers. Furthermore, Four-C interacts with the DSTC system, engine, brakes and steering to promote your chosen handling style.

Comfort

The chassis mode that isolates the car's occupants from irregularities in the road surface. This system prioritises flexible dampening for smooth and gentle body movement and exceptional comfort. Ideal for slippery or uneven roads.

Sport

For a sportier experience. This system prioritises slightly stiffer dampening and acts faster. This results in more decisive body movement, precise handling and good ride comfort. Perfect for active driving.

Advanced

The high performance mode. This system stiffens the dampeners for maximum road contact—directly communicating the road surface to the driver. Prioritising road holding rather than comfort, Advanced is a setting that belongs to ultimate driving experiences.

IDIS

Your personal assistant,
entertainer and navigator
rolled into one.

Within the centre console lies the infotainment system, an electronic hub you can monitor via the built-in display. Navigation, telephone, parking assistance and entertainment are integrated to give you just what you need. And to avoid unnecessary distractions in critical driving situations, Volvo's Intelligent Driver Information System (IDIS) will momentarily delay secondary information or incoming calls from the integrated GSM phone. Using the menu in the centre console, all these in-car systems—and many others—are easily configured to suit your preferences.





Integrated Bluetooth® hands-free system

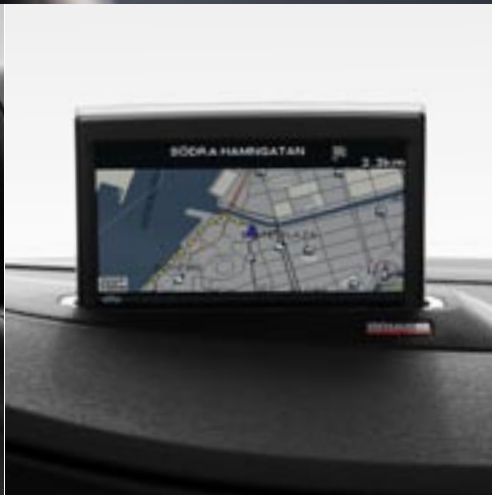
Together with a compatible Bluetooth GSM phone, this feature combines the benefits of the car's infotainment system with wireless telephony. Caller ID and your telephone numbers are instantly displayed via the main display, and you can switch freely from the hands-free system to the phone itself. The system is conveniently operated using the steering wheel controls, and it automatically remembers the mobile last used.

Integrated GSM phone

For minimum distraction, the integrated GSM phone allows you to make calls from your pre-programmed telephone book using the steering wheel integrated controls and the car's generous information display. Communication and convenience are further enhanced by an integrated microphone, the audio system and a separate handset, while the SIM-card reader is easily reached inside the glove compartment.

Rear Seat Entertainment (RSE) dual screen

With Volvo RSE dual screen, the rear seat passengers can watch a DVD film or play a game—together or separately. Two 7-inch wide-screen displays are integrated in the front seat head restraints and provide excellent image quality. Wireless headphones keep things calm in the cabin and you can listen to the music or program of your choice. The RSE system is an integrated part of the car and matches the interior perfectly. It's even crash-tested in Volvo Car Safety Centre so we know it meets our demands.



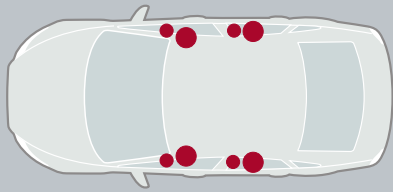
Road and Traffic Information (RTI)

Voice guidance, and graphic navigation if you choose, all the way to your destination. Via TMC (Traffic Message Channel) radio data broadcasts, RTI lets you know if there's trouble on route and recommends an alternative. Points of interest such as filling stations, restaurants and hotels can be included in your route planning. Controlled from the steering wheel integrated remote, the Volvo RTI navigation system is simple to use and offers a variety of visual formats. When it's not needed, the screen retracts into the dash.

The Bluetooth word mark and logos are owned by the Bluetooth SIG, Inc. and any use of such marks by Volvo Car Corporation is under license. Other trademarks and trade names are those of their respective owners.

Premium Sound. Playing at a theatre near you.

This particular Premium Sound system is a landmark in automotive audio. The story begins a few decades ago when we started developing car audio and turned to some highly innovative partners. Driven by a group of passionate sound engineers, the collaboration that followed has flourished ever since. It led to the creation of Dolby® Pro Logic® Surround (a Volvo first), and more recently to Dolby® Pro Logic® II, the theatre technology that recreates sound so that everyone gets to enjoy it. From the Class D amplifier—a solution developed together with Alpine and Bang & Olufsen—the pleasure is then brought alive with Dynaudio, the Danish loudspeaker specialist that makes monitors for recording studios around the globe, and now your Volvo S80.



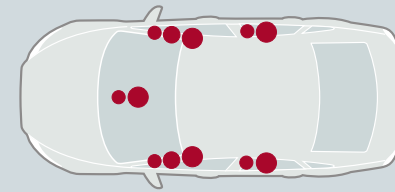
High Performance

A versatile sound system specially configured to the Volvo S80 interior. The High Performance amplifier together with its high specification loudspeakers promotes excellent transient reproduction, high power durability and low distortion—superb sound.

High Performance includes:

- RDS radio
- MP3 and WMA compatible CD player
- 4x40 W amplifier
- 8 High Performance loudspeakers
- AUX connector
- Steering wheel integrated remote control
- Integrated 6-CD changer

Options: a rear seat audio console and iPod®/USB Music Interface.



Premium Sound with Dynaudio

The Premium Sound system is in a class of its own. The class D digital amplifier generates 5x130 watts of music. Dolby® Pro Logic® II surround sound, with its centre loudspeaker and sound processor, recreates a sound that's equally authentic at each seating position. There are 12 loudspeakers developed by the Danish specialist, Dynaudio—just for the Volvo S80.

Premium Sound includes:

- RDS radio
- MP3 and WMA compatible CD player
- 5x130 W Class D digital amplifier
- Dolby Pro Logic II surround sound
- 12 loudspeakers by Dynaudio
- AUX connector
- Steering wheel integrated remote control
- Integrated 6-CD changer

Options: a rear seat audio console and iPod®/USB Music Interface.



Dynaudio loudspeakers

The twelve Dynaudio high-end loudspeakers of the Premium Sound system are powered by a 5x130 W digital amplifier. There are three separate speakers—woofer, tweeter and midrange—in each front door, and in the rear doors there is a similar set-up with tweeter and woofer/midrange. Each speaker has a crossover filter to maximise fidelity. The latest generation Dolby® surround system with a centre loudspeaker and sound processor recreates authentic sound with a strong sense of presence for everyone in the car—a Volvo world first. The digital Class D amplifier features a new technology to provide extremely high efficiency, enabling it to generate the most audio power from the least amount of current.



Playing MP3 music files

There are a number of ways to enjoy MP3 music files in your Volvo S80. If you'd like to connect your personal MP3 player to the audio system, there's a standard auxiliary audio input in the front centre armrest. Volume is conveniently controlled from the steering wheel or centre stack. The CD player is playback compatible with both MP3 and WMA music files. To fully integrate your iPod® and a separate USB device with the car's audio system, you can fit an iPod®/USB Music Interface beneath the front central armrest. Playlists, songs and artists are clearly displayed in the centre stack, while your MP3 player will be charged.

Rear seat audio console

Incorporating sockets for personal headphones, the rear seat audio console allows passengers to choose between musical sources, songs or playlists. And of course, it let's you adjust the volume.

Dolby, Pro Logic, and the double-D symbol are registered trademarks of Dolby Laboratories.
iPod is a trademark of Apple Computer Inc.

⊕ This is where life starts.

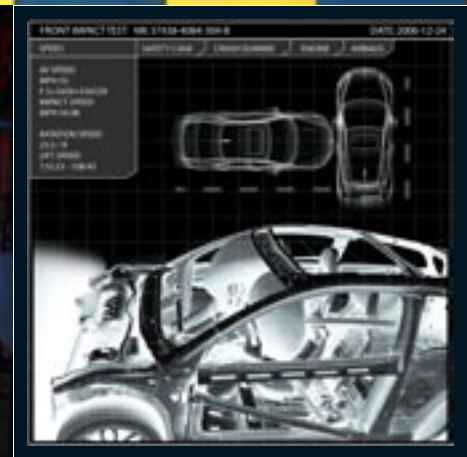
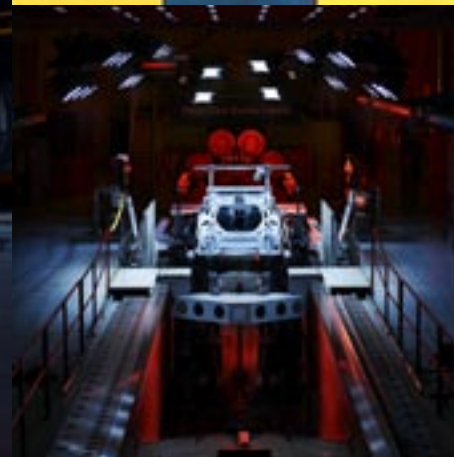


"Safety is our promise. People trust us, and that's a big responsibility. This is what we think about daily when we make our safety decisions. We have to maintain this trust—not only with words, but also with actions. That's also why the safety in a Volvo always begins and ends in a real life situation."

Ingrid Skogsmo, Director Volvo Car Safety Centre

Inaugurated in 2000, the Volvo Cars Safety Centre in Göteborg is the world's most advanced crash laboratory. Here, the purpose is to imitate traffic situations and crashes as they happen in real-life. We recreate crashes with all kinds of vehicles and road obstacles at almost every angle and at speeds of up to 120 km/h. We perform realistic roll-over tests and test cars off-road as well as against genuine Swedish granite rock-face—we can even simulate impacts with wild animals such as a 500 kg Swedish

elk. Of course, these crash tests also incorporate advanced crash test dummies representing a wide range of sizes and ages—from infants to full-grown adults. Every crash is thoroughly documented using high-speed cameras and broken down into fragments of thousands of seconds. We even store crashed cars for a period for future reference. In addition to countless computer simulations, we conduct over 400 full-scale crash tests each year. Many of these tests are based on what our Accident



Research Team discovers at the scene of a real accident. Since 1970, our researchers have investigated over 36,000 such accidents. This gives us the unique ability to learn what works in real life and what doesn't—knowledge that helps us improve, innovate and help save lives.

Life-saving knowledge

Many of the safety features found in a Volvo are based on the findings from the Volvo Accident Research Team. A few recent examples are the collapsible steering column, the energy-absorbing frontal structure, Volvo's child safety equipment, the Side-Impact Protection System (SIPS) and the Whiplash Protection System (WHIPS).

Recreating reality into its smallest details

Advanced crash simulations are an important means to make realistic crash tests of separate components and interior safety systems. Our crash sleigh can recreate the exact movement the car makes the moment of collision, which is unique in the car world. This tipping affects the way occupants are restrained and can normally only be analysed through expensive full-scale crash tests.

Virtual crash tests

Super-computers make it possible for us to recreate and analyse different crash situations six times a day without crashing real cars. We have the technology to test new cars virtually even before they exist as prototypes and we can incorporate extremely detailed virtual crash test dummies—we've even developed the world's first pregnant crash test dummy. This makes full-scale testing very effective and enables us to focus our resources where they are most useful.

⊕ This is living it.



Sweden. Other car manufacturers come here for final car testing under harsh and capricious conditions. For us it's home. This is where we live and drive, 365 days a year. So it's no wonder Volvos are in a category of their own when it comes to active safety. Take, for example, our own proving ground Hållered with its 55 km of test tracks—including different road types from all over the world. This is the top-secret facility where we

scrutinise our cars' ability to support their drivers in all imaginable—and unimaginable—situations. On tracks that aim to reveal any weak spots, we expose all new Volvo models to extreme forces and conditions during thousands of test kilometres—not to mention the distances driven on ordinary Swedish roads. This is where innovation confronts reality. This is also where we evaluate the interaction between the car and the driver

because the most important safety feature in a Volvo is the driver. The more efficient the car's onboard systems support you, the safer it is for you and your passengers.

NEW TECHNOLOGY FOR A NEW DRIVING EXPERIENCE.

Ultimately, no car is safer than its driver. So we loaded your Volvo S80 with state-of-the-art technology to support and help you make the right decisions. Inspired by technology normally found in fighter aircraft, systems like Volvo's Intelligent Driver Information System (IDIS) sense your workload and will withhold incoming phone calls and other peripheral information in stressful situations. Still, technology will never take the responsibility away from you as driver. The final decision is always in your hands. But if this technology helps make you more alert and relaxed as a driver, it also contributes to the overall safety and well-being in your Volvo.

Double your illumination—twice

Designed in a country characterised by cold and darkness for several months a year, the headlamps in a Volvo S80 combine separate reflectors to provide even and effective illumination in all conditions.



Emergency Brake Light (EBL)

Beyond the immediate response of the car's brake lights, EBL warns other road users about your emergency braking status. When the car's deceleration exceeds 0.7g, or when the anti-locking brakes are activated, the side marker lights and the fog lights start flashing.

Hydraulic Brake Assist (HBA)

Helping the driver stop the car in the shortest possible distance, HBA employs a combination of vacuum and hydraulics. This ensures that the optimal braking power is always available when it's needed. Additionally, the hydraulic power maintains brake pressure even through prolonged brake usage.

Ready Alert Brakes (RAB)

Reducing the braking distance further, RAB uses information such as the sudden release of the accelerator or the Adaptive Cruise Control to anticipate an emergency braking. It moves the brake pads closer to the discs to speed brake response.

⊕ Designed for life.



IN A FRONTAL COLLISION the patented frontal structure with its sizeable deformation zones in different kinds of steel will yield to help absorb crash energy. In developing the Volvo S80's protective qualities, we have focused on frontal collisions at both higher speeds and with heavier vehicles. The compact power train is designed to help optimise deformation—all main components in the engine bay have their own predetermined positions to help keep components outside the cabin. A steel strut under the dashboard helps prevent components in the engine bay from intruding into the cabin. This also helps protect legs and feet.

The unique geometry of the frontal structure and longitudinal steel struts in the doors helps disperse crash energy away from the front to the rear of the car, further helping to reduce the strain on the occupants.

Inside the car, occupant protection is increased by optimising the functions of all safety restraint systems. The safety belts with pre-tensioners on all seats and load limiters on the front seats interact with other safety features—such as the deformable steering column and dual-stage adaptive airbags—to help keep the occupants out of harm's way.

The interior is designed to help absorb as much crash energy as possible and to help reduce the risk of injury. For example, the ignition switch, for example, is positioned on the dashboard away from the driver's knees.



"To me, safety is beautiful. Every detail in a Volvo—from the interior ergonomics and the fantastic seats, to the body's powerful shoulders and softly rounded front—are there for safety reasons. This is functionality that goes hand in hand with distinctive design and it sure looks good."

Steve Mattin, Design Director, Volvo Car Corporation

It is the interaction between the different safety systems that determines how safe a car is. Not the number of safety features itself. First, the driver must have the right conditions behind the wheel. Seats, instruments, controls, visibility, and lighting—all contribute to safety when they interact to support the driver. Then there's how the car behaves on the road. The way the chassis interacts with brakes, steering and different stability enhancing systems not only determines how fun the car is to

drive—this is also crucial to help the driver maintain control in challenging situations. Finally, if an accident can't be avoided, you and your passengers are surrounded by a wealth of interacting protective systems. Hopefully you'll never have to experience them in action, but it can be reassuring to know they're there to help protect you.

IN A ROLL-OVER the extremely sturdy safety cage will help protect the occupants while the safety belts help keep them restrained in their seats. If the car first has been hit from the side, the inflatable curtain (IC) is activated to help protect the heads of the outboard occupants and help keep them inside the car. The IC remains inflated for several seconds to help provide extended protection, regardless of whether the windows are up or down. The energy absorbing interior also adds to occupant protection. Additionally, the roof structure is reinforced to help keep the passenger compartment intact.



IN A SIDE IMPACT the distance between your chest and the colliding car is about 30 cm. So how can we best use this distance to help protect life? To provide strength and carefully controlled deformation in a side impact, the door and side structure in the Volvo S80 is built up of a combination of ultra high strength steel and softer grades of steel. For example, the unique one-piece hydro-formed side structure is extremely strong to help withstand a severe side impact—even with a larger vehicle such as a SUV. In the front seats, you'll find strong, rigid side-impact tubes. These transfer the loads from the side of the car into the centre of the car, where a steel box is deformed. The dual-chamber side airbags in the front seats help protect the occupants chest and hip—the hip chamber inflates with five times higher pressure than the chest chamber to help absorb maximum impact where the body is most fragile. The inflatable curtain (IC) adds protection for the head and help keep the occupants inside the car, both in the front and rear.

IN A REAR IMPACT the rear deformation zones will help absorb as much as possible of the crash energy before it reaches the cabin. Similar to the front, the rear safety structure features an optimised mix of different grades of steel to provide strength and carefully controlled deformation. The fuel tank is designed to remain well protected in front of the rear axle. Also the exhaust system and spare wheel are designed to have no effect on the energy absorption.

Inside the cabin, the head restraints not only help protect the neck and spine, but also help protect the head from shattering glass. Integrated in the front seats, Volvo's unique Whiplash Protection System (WHIPS) cradles the spine and neck in a controlled manner. The system is activated by a collision of sufficient force from behind. Independent research has shown that WHIPS is one of the most effective in the world. Since its introduction in 1998, it has helped reduce long-term consequences of accidents by more than 50%.



Standard 3.2L 6 cylinder Petrol and D5 Diesel

Airbag, passenger side
Aluminium wheels 17"
Audio remote in steering wheel
Automatically dimmed inner rear view mirror
Car coloured sill mouldings
Cruise control
Dark Finition or Cross Brushed aluminium inlays
Dynamic Stability and Traction Control (DSTC)
Electronic Climate Control (ECC)
Emergency Brake Assist (EBA)
Fog lights in front spoiler

Grocery bag holder
High performance audio package
Illuminated vanity mirrors
Inflatable Curtain (IC)
Interior Air Quality System (IAQS)
Leather-clad gear knob
Leather-clad steering wheel
Light in outer mirrors
Outside temperature gauge
Power seat driver, with memory
Power windows front and rear

Rain sensor
Remote control central doorlocking
Retractable outer rear view mirrors
Side Impact Protection System (SIPS)
Sovereign Hide Soft Leather upholstery
Steering wheel in height and reach adjustable
Trip computer
Whiplash Protection System (WHIPS)



V8

Aluminium wheels 18"
Classic wood inlays
Electrical foldable rear headrests
Headlamp washers
Memory for rear view mirrors
Power seat driver and passenger, with memory
Premium Sound with Dynaudio loudspeakers
Rear seat entertainment, DVD player with two 7 inch wide screens
Rear seat integrated refrigerator

www.volvocars.com



Style Guide.

Crafted according to your requirements, the interior of the car can take on any number of personalities. Choose between various upholstery colours and materials and a number of specially designed options.



Sovereign Hide

This exclusive full-leather upholstery is made from finest Scottish hide. It's thick, soft to touch and has an exquisite natural grain.

Perforated leather

Designed for use with ventilated seats, this quality is made with buffed leather. Central seat panels are perforated, efficiently managing body moisture while adding an aesthetic quality.

Leather

This is a hide quality that's comfortable, durable and has a coarse grain pattern. Like all Volvo leather, it's organically tanned and ages beautifully.

Sala textile

Sala is a finely woven fabric with a contemporary feel and finish. Central seat panels are finely chequered while outer panels are plain.



Testing of materials for harmful substances

Making life more comfortable for people with allergies or asthma, our upholsteries and interior textiles comply with the Oeko-Tex Standard 100—an international benchmark ensuring that textiles and leathers are tested for certain allergy inducing or harmful substances. Several interior metal details are tested with regard to contact allergies, and comply with the same standards for nickel leakage as high quality jewellery.

Ergonomic design

Developed in cooperation with ergonomic specialists to provide generous support for the body during hours of driving, the seats in the Volvo S80 are among the most comfortable in the automotive world. Multiple adjustment possibilities and adjustable lumbar support make it easy to find the perfect driving position.



Coat hanger

On the front passenger seat head restraint there's a convenient hook where you can keep your jacket within easy reach from the driver's seat.

Integrated pocket

To provide practical storage for small items such as a mobile phone or wallet, all upholsteries feature pockets on the front edge of the front seat cushions.

Interior design. Anthracite Black.



Anthracite Black interior with Perforated leather Offblack upholstery (2200), Classic wood centre console and door panel inlays, Charcoal leather-clad steering wheel and Leather/Classic wood gear knob.



Anthracite Black interior, Sovereign Hide Offblack upholstery (2400)



Anthracite Black interior, Perforated leather Offblack upholstery (2200)



Anthracite Black interior, Leather Offblack upholstery (2100)



Anthracite Black interior, Sala Offblack upholstery (2000)



Anthracite Black interior with Perforated leather Quartz Grey upholstery (2208), Cross brushed aluminium centre console, door panel inlays. Charcoal leather-clad steering wheel and gear knob.



Anthracite Black interior,
Sovereign Hide Quartz Grey upholstery (2408)



Anthracite Black interior,
Perforated Leather Quartz Grey upholstery (2208)



Anthracite Black interior,
Leather Quartz Grey upholstery (2108)

Interior design. Anthracite Black.



Anthracite Black interior with Perforated leather Soft Beige upholstery (2202),
Cross Brushed aluminium centre console and door panel inlays, Charcoal leather-clad steering wheel and gear knob.



Anthracite Black interior,
Sovereign Hide Soft Beige upholstery (2402)



Anthracite Black interior,
Perforated leather Soft Beige upholstery (2202)



Anthracite Black interior,
Leather Soft Beige upholstery (2102)

Interior design. Sandstone Beige.



Sandstone Beige interior with Sovereign Hide Soft Beige upholstery (2412),
Classic wood centre console and door panel inlays, Soft Beige leather-clad steering wheel and Leather/Classic wood gear knob.



Sandstone Beige interior,
Sovereign Hide Soft Beige upholstery (2412)



Sandstone Beige interior,
Perforated leather Soft Beige upholstery (2212)



Sandstone Beige interior,
Leather Soft Beige upholstery (2112)



Sandstone Beige interior,
Sala Mocca Brown upholstery (2014)

Interior design.





Manganite trim



Cross Brushed aluminium trim



Dark Finline trim



Classic wood trim



Modern wood trim



Leather-clad steering wheel,
Charcoal



Leather/Classic wood steering wheel,
Charcoal



Leather-clad steering wheel,
Soft Beige



Leather/Classic wood steering wheel,
Soft Beige



Leather-clad gear knob
Charcoal, Geartronic



Leather/Classic wood gear knob
Charcoal, Geartronic



Leather-clad gear knob
Soft Beige, Geartronic



Leather/Classic wood gear knob
Soft Beige, Geartronic

Exterior design.





Balius 8x18"
Silver Bright



Balius 8x18"
Chromed



Fortuna 8x18"
Silver Bright



Fortuna 8x18"
Diamond cut/Light Grey



Odysseus 8x18"
Silver Bright



Venator 8x18"
Silver Bright



Venator 8x18"
Chromed



Zubra 8x18"
Silver Bright



Canicula 7x17"
Silver Bright



Canicula 7x17"
Polished



Meissa 8x17"
Silver Bright



Regor 7x17"
Silver Bright



Spartes 7x17"
Silver Stone



Naos 7x16"
Silver Stone



Creon 7x16"
Silver Stone



Welcome to the Executive lounge.





S80

Intuitive and luxurious, our top of the line Executive variant takes the sensory experience of the Volvo S80 even further. Relax in lush surroundings and enjoy the good things. Of course, handcrafted soft leather and hand-finished walnut wood abound. The seats are fully upholstered in finest soft leather and feature an Executive treatment to really spoil you. Contrasting seams and piping add to the elegance. The armrests are upholstered in soft leather, and your feet can rest on the thick Executive nubuck-trimmed textile mats. There's walnut wood trim in door panels, steering wheel, gear knob and dashboard—all complimented by the unique walnut wood Executive centre console. Then turn on the stereo, and fill the cabin with music from the 650 W Premium Sound audio system with Dolby® Pro Logic® II surround sound and twelve Dynaudio loudspeakers.



EXECUTIVE INTERIOR DESIGN

The Executive interior is available in two different colour themes—Anthracite and Sandstone. The Executive Anthracite interior comprises three upholstery combinations to choose from—Offblack, Linen White and Chestnut. Or go for the airy Sandstone Beige interior, available with Linen White upholstery. The door armrests are colour coordinated with the seats and upholstered in Executive Soft leather.



Anthracite interior,
Executive Soft Leather Offblack (2F00)



Anthracite interior,
Executive Soft Leather Linen White (2F0L)



Anthracite interior,
Executive Soft Leather Chestnut (2F0D)



Sandstone Beige interior,
Executive Soft Leather Linen White (2F1L)



Integrated rear seat refrigerator

For the simple pleasures, you have a refrigerator between the rear seats. Refreshments are kept cold and within convenient reach for those with the privilege to ride in the back. These passengers will also have their own hand-cut Swedish crystal by Kosta Boda, designed by the Swedish glass artist Bertil Vallien. A specially designed Executive bottle opener in stainless steel is also included.

Options and accessories.



1

iPod®/USB Music Interface

Simply connect your iPod—or a USB device—to the connector hidden under the front centre armrest and leave it there out of harm's way. The iPod or USB device will be seamlessly integrated with the car's audio system. Playlists, songs and artists are displayed in the console menu and you can select your music via the audio controls or steering wheel integrated controls. You can also select different random and shuffle modes. When reaching your destination, simply unplug and take your portable device with you—with the battery newly charged.

iPod is a trademark of Apple Computer Inc.

2

Integrated Bluetooth® handsfree system

This factory-fitted handsfree system integrates your Bluetooth compatible mobile phone with the car's infotainment system to simplify and improve communication on the road. You operate your phone using the buttons in the steering wheel. The system automatically recognises your phone as you enter the car and seamlessly takes over, allowing you to switch freely from the mobile phone to the hands-free system. Cannot be combined with the integrated phone.

The Bluetooth word mark and logos are owned by the Bluetooth SIG, Inc. and any use of such marks by Volvo Car Corporation is under license. Other trademarks and trade names are those of their respective owners.

3

Passenger airbag cut-off switch

In order to use a rear-facing child safety seat in the front passenger seat, you can add a cut-off switch that allows you to disengage the passenger airbag using the car key.

5



7



9



6



8



4

Spectacle holder

Shaped to fit most models, this holder keeps your spectacles within reach. Simply press it and it glides out and opens up.

5

Power child-safety lock

Allows the driver to lock the rear doors so they cannot be opened from inside—convenient and safe.

6

Power foldable rear head restraints

Perfect for improving rear visibility when reversing, these are activated by the touch of a button from the driver's seat. The head restraints fold forwards so that rear-seat passengers notice and raise them again when entering the car.

7

Water-repellent glass

To help offer far better visibility in the wet, these front side windows help repel water as you drive. The hydrophobic surface treatment turns water into small drops that will be blown away by the force of the wind. This also gives you the benefit of less ice or frost in winter conditions.

8

Sun shades

Easily attached to the rear door windows and rear window, these sunblinds help reduce the heat and glare of direct sunlight. Simply remove them when they're not needed.

9

Integrated rear seat refrigerator

This refrigerator between the rear seats will keep refreshments cold and within convenient reach for the rear seat passengers.



1



2



3



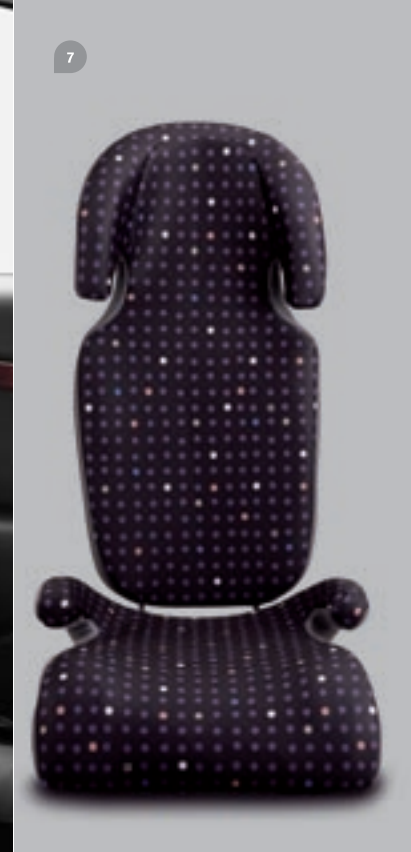
4



5



6



7

1

Illuminated footsteps

Open the door to an illuminated welcome. Embedded in the brushed stainless steel of the front and rear footsteps, the Volvo logo lights up together with interior lighting.

2

Premium textile mats

An exclusive water-proof textile mat with rubber on the reverse side. Extra thick pile and colour-matched trim further heighten the ambience of the interior. Colour coordinated with the interior.

3

Power front seats

These make adjusting the seat a real pleasure. The drivers seat has a memory function for up to three different settings, and includes the door mirror positions.

4

Park Assist Camera

If the car is equipped with RTI navigation system, this helps display what's going on behind your car when reversing. The system uses the RTI screen and a camera discretely located over the number plate. On-screen guiding lines provide extra assistance for smooth parking.

5

Park assist

Activated when you engage reverse gear, rear park assist helps you when reversing into tight spaces. The audio system is turned down and a pulsating sound from the rear loudspeakers becomes a continuous tone as you approach an obstacle. At speeds less than 10 km/h, front park assist performs a similar function at the front of the vehicle, alerting you via the front loudspeakers. Park assist sensors are integrated in the bumpers and colour coordinated.

6

Child safety seat (3-18 kg)

This rear-facing child safety seat is the foundation of Volvo's child safety system, helping to provide protection from various types of impacts. It can be supplemented with a softly padded insert for infants to further enhance comfort on long journeys. Specially designed accessories include a play table, pillow and storage bag.

7

Booster cushion and adjustable backrest (15-36 kg)

Comfortable to sit on and helps position the child at the correct height for the safety belt. The adjustable backrest provides extra support for the back and neck and can be reclined for sleeping.



8

Shopping bag holder

A convenient solution to keep shopping bags from emptying themselves during the journey. Simply slip the handles of the bags over the sliding hooks under the back shelf.

9

Road and Traffic Information (RTI)

Integrated in the dashboard and controlled from the steering wheel, RTI helps you find the quickest route to your destination. Audible instructions provide directions when necessary, and TMC (Traffic Message Channel) radio data broadcasts provides advance warning of traffic congestion with suggestions for alternative routes. The display shows where you are and the distance to your destination. RTI is concealed when not in use, and unfolds at the touch of a button.

10

Grocery bag holder

This unfolds from the load compartment floor and keeps your shopping bags and other similar items securely and conveniently in place.

11

Bicycle holder

An easy-to-load and stable holder available in two versions: one which secures the bike by the frame and both wheels, and one fork-mounted for bikes with or without disc brakes.

12

Ski/snowboard holder

This is easy to use, has an aerodynamic design and pulls out sideways to facilitate loading and unloading of up to six pairs of skis or four snowboards.

Volvo S80 specifications.

EIGHT-CYLINDER PETROL ENGINE

Eight-cylinder 4.4-litre all-aluminium petrol engine. 60-degree v-configuration. Double overhead camshafts, 32 valves. Variable Valve Timing (VCT) and Variable Intake System (VIS). Electronic engine management system. Three-way catalytic converter with Lambda sensor.

Allied with an advanced all-wheel drive system and six-speed Geartronic, this highly compact V8 harmonises perfectly with the agile character of the Volvo S80. The sophisticated engine design, boasting continuously variable valve timing and variable intake system, promotes high performance, smooth running, and superior power from low revs. The full torque potential of 440 Nm is delivered at 3950 rpm, while at only 2000 rpm the engine delivers 370 Nm. From standstill, 100 km/h is only 6.5 seconds away—there's ample power for overtaking quickly and safely, as well as for long and comfortable journeys. Advanced emission control featuring four catalytic converters reduces harmful emissions beyond the standards required by current legislation—such as Euro 4 and California's ULEV II—making this V8 one of the cleanest in its class.

Volvo S80 V8 AWD (315 hp)

Engine type: 4.4-litre V8 petrol engine
Max power output: 232 kW (315 hp) at 5950 rpm
Max torque: 440 Nm at 3950 rpm
Acceleration 0–100 km/h, auto: 6.5 sec
Top speed, auto: 250 km/h
Fuel consumption, litres/100 km, mixed cycle, auto: 11.9
Carbon dioxide emissions CO₂ g/km, auto: 284
Environmental classification: Euro 4 (2005)
Transmission: Six-speed Geartronic automatic

SIX-CYLINDER PETROL ENGINE

Six-cylinder in-line all-aluminium petrol engine. Double overhead camshafts, 24 valves with Variable Valve Timing (VCT). The 3.2 engine also features Variable Intake System (VIS) and Cam Profile Shifting (CPS) on the intake camshaft. Electronic engine management system. Three-way catalytic converter with Lambda sensor.

This highly compact all-new in-line six-cylinder petrol engine meets high expectations within performance, comfort and environmental care. The smooth running and responsive engine character provides a relaxed drive at all speeds. Advanced engine technology, such as the variable geometry intake manifold in the 3.2 litre engine, helps increase torque over a wide speed range and ensures power at high revs. And depending on your driving style and the situation, the intake valve train in the 3.2 automatically switches between economy and performance modes to optimise efficiency. Twin turbos mean immediate response already from low revs in all conditions. The engines' compact design aids safety performance in a frontal collision. The latest generation of fast response emission control technology ensures that these engines comply with stringent environmental standards such as California's ULEV II.

Volvo S80 3.2 (238 hp)

Engine type: 3.2-litre in-line six-cylinder petrol engine
Max power output: 175 kW (238 hp) at 6200 rpm
Max torque: 320 Nm at 3200 rpm
Acceleration 0–100 km/h, auto: 7.9 sec
Top speed, auto: 240 km/h
Fuel consumption, litres/100 km, mixed cycle, auto: 10.3
Carbon dioxide emissions CO₂ g/km, auto: 246
Environmental classification: Euro 4 (2005)
Transmission: Six-speed Geartronic automatic

FIVE-CYLINDER DIESEL ENGINE

Five-cylinder in-line 2.4-litre common rail direct injection turbodiesel. Double overhead camshafts, 20 valves. Turbo with variable turbine geometry. Electronic engine management system. Two-way catalytic converter with EGR. Maintenance-free particle filter. Dual-charge air coolers (Intercoolers).

This new generation all-aluminium five-cylinder turbodiesel is both exhilarating and harmonious. New diesel technology, such as common rail direct injection and variable turbine geometry, assure quick and comfortable response, exceptional fuel economy and cleaner exhaust. Its high torque (max 400 Nm) provides remarkable acceleration and flexibility in any situation. The high performance D5 has a truly sporty nature—sharp take-off and powerful overtaking in all gears. Low weight further enhances fuel economy and a balanced drive. The engine meets environmental demands and features a maintenance-free particle filter that effectively reduces soot particles in exhaust gases.

Volvo S80 D5 (185 hp)

Engine type: 2.4-litre five-cylinder direct injection common rail turbodiesel
Max power output: 136 kW (185 hp) at 4000 rpm
Max torque: 400 Nm at 2000–2750 rpm
Acceleration 0–100 km/h, auto: 9.0 sec
Top speed, auto: 225 km/h
Fuel consumption, litres/100 km, mixed cycle, auto: 7.3
Carbon dioxide emissions CO₂ g/km, auto: 193
Environmental classification: Euro 4 (2005)
Transmission: Six-speed Geartronic automatic

Please note: Some of the information in this brochure may be incorrect due to changes in product specifications that may have occurred since printing. Some of the equipment described or shown may now only be available at extra cost. Before ordering, please ask your Volvo dealer for the latest information. The manufacturer reserves the right to make changes at any time and without notice, to prices, colours, materials, specifications and models.

DRIVELINE

Front wheel drive (V8 AWD features an electronically controlled all-wheel drive system). Transverse engine. A six-speed Geartronic automatic is standard for all engine variants.

The responsive six-speed Geartronic automatic for relaxed driving also allows manual gear shifting so that you can maintain a lower gear to bring up the revs or provide the added assistance of engine braking.

CHASSIS

Front suspension with spring struts (McPherson), anti-dive and anti-lift function. Active multi-link independent rear suspension. Anti-roll bars front and rear. DSTC (Dynamic Stability and Traction Control).

The rigid body enables optimal suspension performance, balanced handling and a high level of comfort. Front and rear suspension interact to provide stable braking and smooth steering. In a curve, the rear wheels have a slight steering facility for added stability and steering response. The DSTC system cuts in if either of the drive wheels begins to lose traction or if a skid is imminent.

STEERING

Power-assisted hydraulic rack and pinion steering. Tilt and telescopic steering wheel column. 2.8 turns lock to lock. Turning circle 11.2 meters (depending on tyres).

Steering is responsive yet firm. The optional speed dependent power steering gives progressively less servo assistance the faster you drive. Higher steering precision and enhanced road feedback are further benefits. At lower speeds, added power assistance makes the car even easier to manoeuvre, for instance when parking. Three different steering force levels can be selected in the car's information menu to suit different drivers and driving conditions.

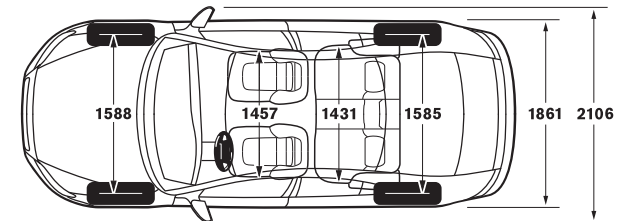
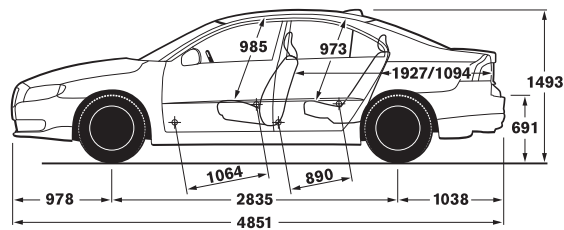
BRAKES

Power-assisted anti-locking disc brakes (ABS), ventilated discs front. OHB (Optimised Hydraulic Brakes). HBA (Hydraulic Brake Assist). RAB (Ready Alert Brakes). FBS (Fading Brake Support). EBD (Electronic Brake Distribution) between the front and rear brakes. Diagonal-split braking system. Power Parking Brake (PPB).

Generously dimensioned anti-locking disc brakes and optimised hydraulics help to ensure a short stopping distance in all situations. Furthermore, they withstand tough use without fading. HBA helps you use your brakes to the full in an emergency situation, while RAB anticipates severe braking and prepares for it by moving the brake pads closer to the discs. FBS automatically compensates for the higher pedal forces required after long periods of heavy braking. EBD distributes the braking effect between the front and rear wheels to achieve optimal results according to load and driving conditions. The Power Parking Brake (PPB) makes moving off from steep gradients easier. Once depressed, the PPB control lever automatically releases as the car pulls away. It can even be set to engage automatically as you extract the key.

FUEL TANK

70 litres



The safer you are, the smarter we look.

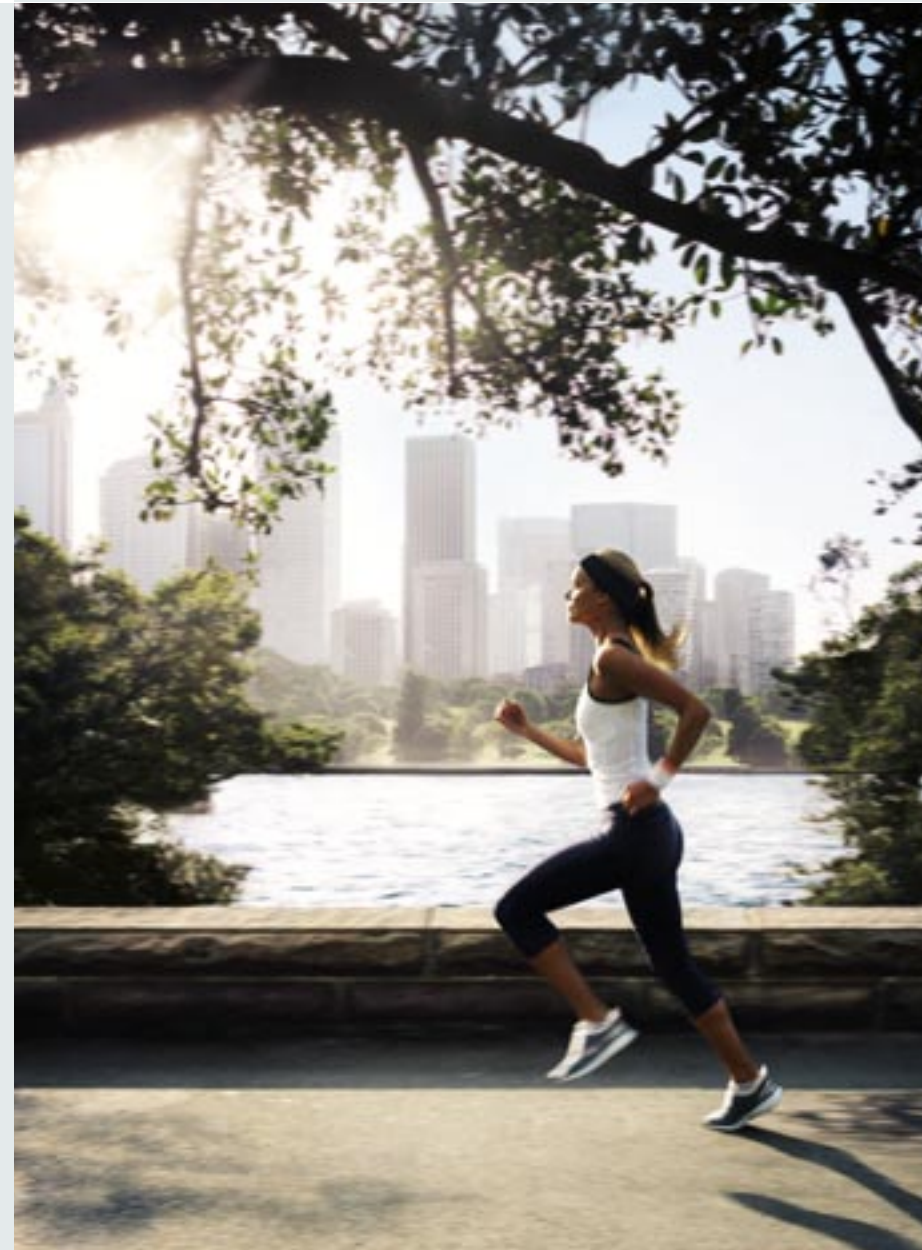
For almost eighty years we have been dedicated to making cars that save lives in an accident. Today our safety systems also help people avoid accidents in the first place and significantly help reduce injuries—like whiplash—when accidents occur. For many, Volvo is another word for safety. Proud as we are, we're not satisfied.

Our passion for life means always looking for new safety solutions that exceed current requirements and conventional testing. Our goal is to help make travel safer for every road user, for generations to come. That's why our protective attitude has grown to include the air we breathe and the world around us. But then, we are ambitious people.

The Volvo S80's relationship to the environment began with the conception of the car itself. For example, it's designed to be 85% recyclable. Efficient engine management means lower fuel consumption and, in turn, less emission of carbon dioxide. Advanced emission control eliminates between 95 and 99% of carbon monoxide, hydrocarbons and nitrogen oxides. For the diesel engines, there's a particle filter that stops approximately 95% of soot particles from being emitted. The catalytic converter is positioned to provide optimum exhaust conversion sooner after cold starting. Of course, every Volvo S80 engine meets stringent exhaust requirements.

At Volvo Cars, our overriding objective is to balance the needs of our company, our customers, society and future generations in a sustainable way. To find out more, please visit: www.volvocars.com/citizenship

To choose your model of Volvo based on its overall environmental performance, read our Environmental Product Information (EPI) report, at www.volvocars.com/EPI



Colours of choice.



614 Ice White



453 White pearl*



473 Shimmer Gold pearl*



454 Ruby Red pearl



466 Barents Blue pearl



467 Magic Blue pearl*



471 Willow Green pearl



426 Silver metallic*



477 Electric Silver metallic*



472 Oyster Grey pearl*



455 Titanium Grey pearl*



452 Black Sapphire metallic*



019 Black Stone



487 Ember Black pearl*

*Available for the Volvo S80 Executive.

Please note: It is not possible to reproduce exact original shades in printed matter. Please ask your dealer to show you samples.



Clean colours

To reduce usage of environmentally hazardous solvents all Volvo exterior colours are water-based. What's more, our painting facilities are among the cleanest in the world.

Notes.

Two columns of horizontal lines for taking notes.

Volvo. for life

VOLVO

Volvo Car Corporation MY08. English/India. Printed in India on non-chlorine bleached paper.