



Mercedes-Benz

Genuine accessories for the GL-Class

CONTENTS

EXTERIOR

Light-alloy wheels | Wheel accessories | Styling accessories _____ **04**

TELEMATICS

iPod integration | Navigation | Telephony _____ **12**

INTERIOR

Interior appointments | Child safety _____ **18**

CARGO & CARE

Carrier systems | Load compartment accessories _____ **24**









1 ▶

◀ 3

▲ 4

Light-alloy wheels
Styling accessories
Wheel accessories

EXTERIOR



Good looks

The GL-Class is a vehicle that oozes style. And when it comes to interpreting its good looks in a highly individual way you have plenty of choices.

Genuine accessories from Mercedes-Benz add eye-catching highlights: our range of exclusive **incenio** designer wheels extends to an impressive 20" size – in high-shine silver or the latest two-tone look, depending on your preference.

Good looks begin with GL.

Tomeko | 10-spoke wheel

incenio designer wheel

Finish: two-tone

Wheel: 8.5 J x 20 ET 56 | Tyre: 275/50 R20
B6 647 4528

On all light-alloy wheels, use wheel bolt B6 647 0161 and the corresponding rim lock B6 647 0156

Light-alloy wheels are supplied without tyres, wheel bolts or hub caps

Tyre pressure gauge

Compact design. Saves readings. Suitable for all tyre valves (including cycle tyres). Keeping tyres at the optimum pressure saves fuel and reduces tyre wear. Supplied with leather pouch





Perim | Multi-spoke wheel

incenio designer wheel

Finish: two-tone (see pages 04/05) or titanium silver, high-sheen (left)

Wheel: 8.5 J x 19 ET 56 | Tyre: 275/55 R19

Two-tone finish: B6 647 4568

Titanium silver, high-sheen finish: B6 647 4567



Rim locks

Set consisting of coded key and one lock per wheel

Valve caps

Wheel bolts
| not pictured |



incenio designer wheels

Rim locks

Tyre pressure gauge

Valve caps

Wheel bolts

Recheo | 5-spoke wheel

incenio designer wheel

Finish: two-tone (see front page) or titanium silver, high-sheen (below)

Wheel: 8.5 J x 20 ET 56 | Tyre: 275/50 R20

Two-tone finish: B6 647 4570

Titanium silver, high-sheen finish: B6 647 4569

Merem | 5-spoke wheel

incenio designer wheel

Finish: two-tone (see below) or titanium silver, high sheen (below right)

Wheel: 8.5 J x 20 ET 56 | Tyre: 275/50 R20

Two-tone finish: B6 647 4566

Titanium silver, high sheen finish B6 647 4565



EXTERIOR



5-spoke wheel

Finish: titanium silver

Wheel: 8 J x 18 ET 53

Tyre: 265/60 R18

B6 647 4564



5-spoke wheel

Finish: titanium silver

Wheel: 8.5 J x 19 ET 56

Tyre: 275/55 R19

B6 647 4219



5-spoke wheel

Finish: tremolite metallic, high-sheen

Wheel: 8.5 J x 20 ET 56

Tyre: 275/50 R20

B6 647 0166



5-spoke wheel

Finish: titanium (pictured above) silver or himalayas mid grey (not pictured)

Wheel: 8.5 J x 20 ET 56

Tyre: 275/50 R20

Titanium silver finish: B6 647 0129

Himalayas mid grey finish: B6 647 0165

Mud flaps

Protect the underbody and the sides of the car from loose chippings and dirt. For front and rear axles



Snow chain systems

The RUD-matic snow chain has a user-friendly design and can be fitted and removed quickly. With extra-reinforced chain links for the toughest conditions and excellent traction on snow and ice, it is a reliable companion on wintry roads. Your Mercedes-Benz partner will be happy to advise you on this and other snow chain systems | not pictured |

Hub caps

Protect the hub from dirt. Available in the following versions:

- 1 | Classic Roadster design in blue
- 2 | Classic Roadster design in black
- 3 | Sterling silver with chrome star
- 4 | Titanium silver with chrome star

AMG 5-spoke wheel | Style VI

Finish: silver, high-sheen

Wheel: 10 J x 21 ET 37 | Tyre: 295/40 R21

B6 603 1070



5-twin-spoke wheel

Finish: titanium silver

Wheel: 8.5 J x 20 ET 56 | Tyre: 275/50 R20
B6 647 0131

On all light-alloy wheels, use wheel bolt B6 647 0161 and
the corresponding rim lock B6 647 0156

Light-alloy wheels are supplied without tyres, wheel bolts
or hub caps

AMG light-alloy wheels

Hub caps

*Mercedes-Benz
light-alloy wheels*

Mud flaps

Snow chains

EXTERIOR





High-sheen chromed exterior mirror cover

Round off your GL-Class's chrome finish and protect the paintwork from scratches. Available as a 4-piece set



Running board with rubber studs

A functional addition to your GL-Class. Aluminium-effect panel with non-slip rubber studs

- Door handle recesses*
- Exterior mirror cover*
- Fin attachments*
- Indicator bulbs*
- Running board*

High-sheen chromed door handle recesses

Round off your GL-Class's chrome finish and protect the paintwork from scratches. Available as a 4-piece set

Fin attachments for bonnet

High-sheen chromed. Available as a 6-piece set



Chrome-look indicator bulbs

Mirrored indicator bulbs round off the chrome finish of your GL-Class to perfection | standard equipment pictured above |



EXTERIOR





iPod® integration
Navigation
Telephony

TELEMATICS

Great listening

Listen to all those favourites you have saved on your iPhone, your iPod or another MP3 player via your in-car audio system – with the iPod Interface Kit.

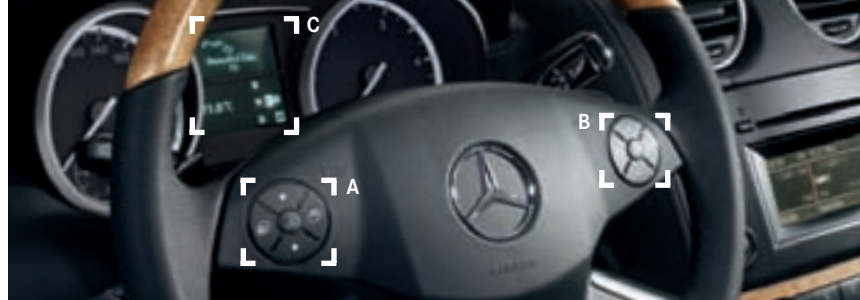
You can even watch videos on the COMAND system screen with the aid of the Media Interface video cable – although only, of course, when the car is stationary – so there's nothing to spoil that genuine feel-good factor.

Media Interface video cable¹

Transforms your Mercedes-Benz into a cinema: the Media Interface video cable allows various video sources (e.g. camcorder, iPod video, iPhone, video players produced by various manufacturers, etc.) to be connected to the Media Interface via AUX. The videos are played on your COMAND APS monitor when the vehicle is stationary. (Only in conjunction with Media Interface, Code 518)



¹ Does not support your iPhone's phone function. Please contact your Mercedes-Benz partner for details of other function restrictions



Mercedes-Benz iPod® Interface Kit²

It's easy to control your iPod via the multifunction steering wheel: scroll through the menus [A], adjust the playback and volume [B] and display the title of your choice in the instrument cluster [C].

The iPod is connected and charged in the glove compartment, where it is hidden from prying eyes. No factory-fitted optional extra required

Mercedes-Benz iPod® Interface Kit, Video²

Like the iPod Interface Kit, offers straightforward control of your iPod. Videos are played on the COMAND display (when vehicle is stationary only). Only in conjunction with COMAND (Code 527 or Code 512)



iPod/iPhone holder³

Black plastic holder for the glove compartment. Holds your iPod in place. Soft, flock surface protects the player from scratches and prevents it sliding around

² The Mercedes-Benz Interface Kit allows you to listen to the music or watch the videos saved on your iPhone (videos with Video kit only). It does not support the phone function

³ For details and a list of supported devices, please contact any Mercedes-Benz service outlet

Mobile-phone holders

When it comes to selecting a mobile for your Mercedes-Benz, you've never had so much choice. One "click" is all it takes to replace the mobile-phone holder. It takes a matter of seconds and is as straightforward as inserting the mobile into the holder itself.

Further advantages of the mobile-phone holders:

- Optimum reception quality as a result of using vehicle's external aerial
- Mobile's battery is charged
- Access to phone's memory
- Convenient operation using multifunction steering wheel

To use a mobile-phone holder, your car must be factory-fitted with optional extra **Code 386, Convenience Telephony**

To find out more about the mobile-phone holders and functions available for your mobile, go to www.mercedes-benz.com/connect, or contact your Mercedes-Benz partner



Mercedes-Benz Bluetooth® telephone module

The telephone module is designed to extend the mobile communication system in your Mercedes-Benz. Just connect it to your Convenience Telephony system (Code 386) in the centre armrest, and start using your mobile via the on-board hands-free system. You can leave your mobile phone in your jacket pocket.

- Access to contact details saved on SIM card
- Optimum reception quality as a result of using vehicle's external aerial
- Read and receive text messages
- The closed box features an integral USB port which can be used to charge the mobile phone

Two versions of the Mercedes-Benz Bluetooth SAP⁴ telephone module are available: one in the form of a closed box [A] and the other with a corded handset [not pictured]. Both versions feature a SIM card reader. Contact your Mercedes-Benz partner for details of the handset's compatibility

Holders are available for various current models of mobile phone:

- 1 | Nokia (3109, 3110, 6300, 6500 Classic, E71, E66)
- 2 | Sony Ericsson (K770i, T650i, C902, C702)
- 3 | Apple (iPhone, 3G)
- 4 | BlackBerry (8300, 8310, 8320, 8900, 9000)



⁴ SAP (SIM Access Profile) allows the module to read your mobile phone's SIM card

*Mobile-phone holders
Bluetooth telephone module
iPod Interface Kit
iPod Interface Kit, Video
iPod/iPhone holder
Media Interface video cable*

TELEMATICS



Rear Seat Entertainment System¹

The powerful DVD system delivers optimum entertainment to rear-seat passengers without disturbing the driver or impeding rear vision. Passengers can watch DVDs on the 8" colour displays or connect up a games console. Sound is output via infrared or corded headphones or your car's audio system. External video sources can be connected via the AUX input. The option of separate video playback on the two monitors allows both rear passengers to select their own individual entertainment

Audio 20 CD with 6-CD changer

Double-tuner radio with 5" colour display. Bluetooth interface with hands-free function and MP3-compatible CD changer. Can be operated via the multifunction steering wheel | not pictured |

¹ Only in conjunction with pre-installation for Rear Seat Entertainment (Code 866)

Rediscover navigation. In recent years integral navigation has made journeys more relaxed, less time-consuming and, above all, safer. If you want to continue to enjoy these advantages to the full, we recommend that you regularly replace the navigation DVD in your navigation system with the latest version. Ensuring that the data you're using matches the roads you're travelling on. And that the only surprises you encounter during your journey are of a pleasant nature



Audio 20 CD
 Audio 50 APS
 COMAND APS
 Navigation DVDs

Rear Seat
 Entertainment System

SD memory card



Europe navigation DVD
 for Audio 50 APS
 Europe navigation DVD
 for COMAND APS

SD memory card

The COMAND APS in your GL-Class features a slot for SD memory cards. Use the SD memory card as a convenient way to play music



COMAND APS with 6-DVD changer

The new COMAND APS now offers even more convenience and freedom when you're on the move: your route is navigated with impressive speed, thanks to the integral hard drive. Up to 6 GB of memory offers virtually unlimited space for your favourite music. COMAND APS also plays back music from DVDs and CDs, and from SD memory cards. And the optional Media Interface (see page 14) also allows you to connect your portable music player. For convenience and enhanced safety, all of these functions can be controlled via your COMAND system. Other features: Bluetooth® connectivity, 7" colour display, dynamic route guidance (RDS/TMC), double-tuner radio with 4-channel amplifier for outstanding sound, DVD changer controls. Also available without DVD changer as an option



Audio 50 APS with 6-DVD changer

Navigation system and car hi-fi combined in one unit which can be operated via the multifunction steering wheel. Dynamic route guidance via RDS/TMC. Navigation arrows shown on 5" colour display. Bluetooth connectivity for automatic transfer of contacts, with hands-free function as standard. Double-tuner radio with 4-channel amplifier for outstanding sound. DVD changer controls. Also available without DVD changer as an option

TELEMATICS





Child safety
Interior appointments

INTERIOR



Back cushion

Ergonomic, individually adjustable cushion, designed to support the back on long journeys. Available in anthracite



Cleanbag

The ideal way to keep the interior clean when you're on the move: the small "Cleanbag" is simply attached to the net in the front passenger footwell



Coat hanger

Robust coat hanger made from chromed metal and plastic. Easy to fit to the front head restraints. The ideal way to transport items of clothing without creasing them

Genuine luxury

The distinctive blue light of the illuminated door sill panels lets you know you've arrived before your journey has even begun.

The feel of the wood/leather steering wheel in your hands adds to the sensation. Welcome on board.

- 1 | CLASSIC velour floor mats
- 2 | CLASSIC all-season floor mats
- 3 | CLASSIC rep floor mats

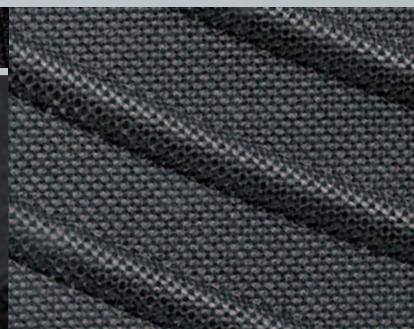
Durable, hardwearing materials. Available in various colours to match the interior. Can be clip-fastened to the floor of the vehicle to prevent slipping

EXCLUSIV all-season floor mats

The alternative to the standard all-season floor mats, with integral textile component. High-quality textile character with unchanged functionality when it comes to protecting the interior of your vehicle. Available in black

AMG floor mats

Velour, anthracite, with embroidered AMG lettering



Wood/leather steering wheel

poplar | black

The wood/leather steering wheels are also available in other colours to match the interior





- AMG floor mats*
- Back cushion*
- Cleanbag*
- Coat hanger*
- Door sill panels*
- Floor mats*
- Spectacles box*
- Wood/leather steering wheel*

Illuminated door sill panels

The blue illuminated Mercedes-Benz lettering is activated every time you open the door to get in or out. These illuminated door sill panels, in ground stainless steel, are a further "highlight" of the GL-Class

Spectacles box

Universal - adjusts to different sizes of spectacles/sunglasses



INTERIOR



Mercedes-Benz child seats are available with automatic child seat recognition as an option. If your car also has automatic child seat recognition, the technology automatically deactivates the front passenger airbag when a child seat with automatic child seat recognition is installed on the front passenger seat.

All child seats are also suitable for use in vehicles without ISOFIX attachment points

“KidFix” child seat

Booster seat for optimum side-impact protection, with height-adjustable backrest. The “KidFix” seat can be attached using the 3-point seat belt and ISOFIX attachment points. Available with automatic child seat recognition as an option. For children between the ages of around 3.5 and 12 (15 to 36 kg). Removable, washable “DaimlerSquare” cover



Vario bag

Plenty of extra space for the really important things in life. Available in three designs: “DaimlerSquare” fabric (pictured), “Angel & Driver” fabric and Alcantara, java fabric



Additional interior mirror

Designed to help you keep an eye on what’s going on in the rear of the car. This practical product, made from shatterproof safety glass, is simple to snap into place

Additional interior mirror

Child seats

Vario bag



“DUO plus” child seat

Optimum safety for children between the ages of around 8 months and 4 years (9 to 18 kg). Fitted as standard with top tether, an additional belt for securing the head section, a height-adjustable shoulder belt and ventilation channels. With ISOFIX attachment points. Adjustable tilt. Available with automatic child seat recognition as an option. Removable, washable “DaimlerSquare” cover



“BABY-SAFE plus” child seat

Deep, moulded seat design offers extra side-impact protection for optimum safety. Special padding, designed to protect particularly vulnerable body areas of children up to around 15 months (up to 13 kg). Removable, washable “DaimlerSquare” cover. With automatic child seat recognition as standard

INTERIOR



Carrier systems
Load compartment accessories

CARGO & CARE



Green light

Often it's the little things that have the biggest effect. Detailed solutions that work perfectly can make that crucial difference to the overall product.

The accessories shown here for your Mercedes-Benz are immaculately designed down to the smallest detail, making them ready for any challenge.

Giving the green light to all your leisure activities.

Crossbars

Robust yet attractive: the crossbars offer a secure hold for the New Alustyle ski and snowboard rack and the Mercedes-Benz roof boxes. And even when unladen they accentuate the individual, sporty look of your GL-Class. The crossbars are available in black or with a high-sheen chromed finish to match your roof rails



Transport and stowage bag
For crossbars and New Alustyle basic carrier bars
Robust bag, made from a high-quality nylon fabric.
Protects the basic carrier bars or crossbars

*To transport cycles on the roof,
please use New Alustyle basic carrier
bars (see page 28)*



Mercedes-Benz roof boxes

Elegant, aerodynamic design, made for your Mercedes-Benz. High-quality, extremely durable material. Available in two colours: titanium metallic [A] and matt silver [B]

1 | Mercedes-Benz roof box XL

family box | Capacity: approx. 450 litres. Available with opening on right or left. Optional accessories: luggage set and ski rack insert

2 | Mercedes-Benz roof box L

sports box | Capacity: approx. 330 litres. Available with opening on right or left. Optional accessories: luggage set and ski rack insert

3 | Mercedes-Benz roof box M

weekend box | Capacity: approx. 400 litres. Available with opening on right or left



|1|

|2|

|3|



Luggage set

| for Mercedes-Benz roof box XL |

Four bags, designed to make perfect use of the space available in the roof box XL. Made from hardwearing, water-repellent polyester. Plus two matching ski bags, each designed to hold max. two pairs of skis. Ski bag also available separately



Luggage set

| for Mercedes-Benz roof box L |

Four bags made from hardwearing, water-repellent polyester. Tailored to the dimensions of the roof box L



Ski rack insert

| for Mercedes-Benz roof box XL |

A secure hold for up to five pairs of skis, subject to ski geometry. For Mercedes-Benz roof box XL

Ski rack insert

| for Mercedes-Benz roof box L |

A secure hold for up to three pairs of skis, subject to ski geometry. For Mercedes-Benz roof box L | not pictured |

*Crossbars
Luggage set
Roof boxes
Ski rack insert
Transport bag*

CARGO & CARE



New Alustyle ski and snowboard rack "Standard"*
For crossbars and New Alustyle basic carrier bars
For up to 4 pairs of skis or 2 snowboards. Lockable

New Alustyle basic carrier bars
Suitable for all roof-mounted carriers
Used in conjunction with other roof accessories, the New Alustyle system opens up a wealth of flexible options when it comes to transporting sports equipment and luggage. The basic carrier bars also ensure the highest degree of safety and aerodynamics

New Alustyle ski and snowboard rack "Comfort"*
For crossbars and New Alustyle basic carrier bars
For up to 6 pairs of skis or 4 snowboards. Lockable. Practical pull-out function makes loading and unloading easier

*Ski and snowboard rack "Comfort" in conjunction with adapter B6 687 0115. No adapter required for "Standard" version





New Alustyle bicycle rack

Can only be fitted to basic carrier bars

Depending on the maximum roof load, up to four bicycle racks can be fitted per pair of basic carrier bars. Each bicycle rack can hold one bicycle with a max. frame diameter of 98 mm (circular frame tubes) or 110 x 70 mm (oval frame tubes). The support frame folds down when not in use, reducing drag when travelling without cycles. Cycles can either be attached to the rack once it has been fitted to the roof or before it is fitted | also pictured right |

The convenient design of the Mercedes-Benz bicycle rack allows the cycle to be attached at ground level. The cycle is simply mounted on the rail alongside the vehicle and both are then fitted to the basic carrier bars

Coil lock

Designed to help prevent theft. Available as an option for the bicycle rack

Mercedes-Benz Bikes

These sporty and elegant bikes, with their exclusive Mercedes-Benz design, are suitable for everyday all-round use and for touring. For more detailed information, please see our “Mercedes-Benz Bikes” brochure

CARGO & CARE

Ski bag for interior

For up to four pairs of skis. With carrying strap and straps for attaching to load-securing rings in load compartment

Box of replacement bulbs

The box of replacement bulbs ensures that you always have the right bulbs at hand for your GL-Class. So if one of the bulbs fails or you're driving in one of the many countries where daytime driving lights are compulsory, you're well prepared





Rear-mounted bicycle rack for trailer coupling

The rear-mounted bicycle rack is easy to attach to the trailer coupling. A simple fold-down mechanism means that the load compartment can still be opened. Basic version for two cycles. Lockable

Extension kit for rear-mounted bicycle rack

Allows you to add a third cycle | not pictured |

The laden bicycle rack can be pivoted downwards, allowing the load compartment to be opened

When the rear-mounted bicycle rack is unladen, simply fold down the vertical retaining bar to access the load compartment. This function also allows space-saving stowage of the rack when removed





Safety tow rod

2-piece steel rod with patented connector and cotter pin. For trailer couplings and towing eyes. Approved for vehicles with a gross vehicle weight of up to 3.2 t

Trailer coupling

Available in detachable or rigid design. Max. drawbar load 140 kg

Adapter

For trailer with 7-pin plug

Fluorescent jacket

Already compulsory in many countries, the bright orange and yellow fluorescent jackets with reflective stripes are conspicuous even in the dark. Available individually or as a pack of two

Coolbox

black/grey | Hard case with fabric cover featuring pockets for extra items. Cold/hot switch. Capacity: 24 litres. 12V connection. Adjustable carrying strap

Coolbag

black | Fabric outside - plastic liner inside. Outside pockets offer plenty of room for extra items. Capacity: 12 litres. 12V connection. Adjustable carrying strap



Rectifier

Allows the Mercedes-Benz coolbox and the coolbag to be connected to a 230V socket at home

Charger with trickle charge function

With its cutting-edge technology, the Mercedes-Benz charger ensures the longest possible battery life. Available in a 3.6 amp version (below) and a 25 amp version (not pictured)



CARGO & CARE

- Adapter*
- Charger*
- Coolbag*
- Coolbox*
- Fluorescent jacket*
- Rear-mounted bicycle rack*
- Rectifier*
- Tow rod*
- Trailer coupling*



Reversible mat with load sill protection

This reversible mat features high-quality velour on one side and non-slip rubber on the other. It not only helps keep the original floor of the load compartment clean but the integral load sill protection also protects the load sill from scratches. When the rear seats are folded flat, the reversible mat covers the entire load area. Available in black

Partition net

Separates the load compartment from the passenger compartment



Deep boot tub

The hygienic way to transport items in the load compartment. Suitable for transporting foodstuffs



Shallow boot tub

Simple to clean. Non-slip thanks to PP-Flex material. Suitable for transporting foodstuffs

Stowage crate

Can be divided into four sections using the adjustable partitioning elements. Ideal for transporting items you don't want to tip over or slide around. Full functionality only in conjunction with the shallow boot tub



Non-slip mat

black | Non-slip mat made from oil and acid-resistant polyester. Designed to fit the contours of the load compartment



Tie-down strap

Even heavy objects can be secured in place easily using this strap

Luggage nets

Available for the floor of the load compartment and the load sill. Prevent lightweight objects from sliding around during your journey. All nets are in pocket format



Luggage-securing feature

Ingenuous solution to the problem of luggage sliding around in the load compartment. Attaches securely around the object in question thanks to Velcro fastening

Shopping crate

anthracite | Collapsible



- Boot tubs*
- Luggage nets*
- Luggage-securing feature*
- Non-slip mat*
- Partition net*
- Reversible mat*
- Shopping crate*
- Stowage crate*
- Tie-down strap*

CARGO & CARE

Genuine accessories for the GL-Class

Light-alloy wheels are supplied without tyres, wheel bolts or hub caps

Further colour variants for individual products can be found in the separate price list for this brochure

Description	p	Item no.
Adapter (for ski and snowboard rack, "Comfort")	28	B6 687 0115
Adapter (for trailer coupling)	31	A000 821 1656
Additional interior mirror	23	A204 810 2817
AMG floor mats (LHD, complete set, anthracite)	20	B6 603 7106
Audio 20 CD with 6-CD changer	16	on request
Audio 50 APS with 6-DVD changer	17	on request
Audio 50 APS without DVD changer	17	on request
"BABY-SAFE plus" child seat (with automatic child seat recognition)	23	A000 970 1000
Back cushion	20	A000 970 0690
Box of replacement bulbs (ECE)	29	B6 681 0033
Charger (ECE version, 3.6A)	31	B6 754 2028
Charger (ECE version, 25A)	31	B6 754 2027
Chrome-look indicator bulbs (ECE)	11	A000 580 2410
CLASSIC all-season floor mats (LHD, complete set, black)	20	B6 668 0260
CLASSIC rep floor mats (LHD, complete set, black)	20	B6 636 0346
CLASSIC velour floor mats (LHD, complete set, black)	20	B6 629 0102
Cleanbag	20	A000 840 0674
Coat hanger	20	A000 814 0132
Coil locks (for New Alustyle bicycle rack, 3 mm, set of 2, common key)	29	A000 583 1695
COMAND APS with 6-DVD changer	17	on request
COMAND APS without DVD changer	17	on request
Coolbag	31	B6 681 8725
Coolbox	31	A000 820 4206
Crossbars (black)	26	B6 781 2128
Crossbars (chromed)	26	B6 781 2129

Description	p	Item no.
Deep boot tub	32	B6 668 0079
"DUO plus" child seat (with automatic child seat recognition)	23	A000 970 1100
Europe navigation DVD for COMAND APS	17	on request
Europe navigation DVD for Audio 50 APS	17	on request
EXCLUSIV all-season floor mats (LHD, complete set, black)	20	B6 668 0294
Extension kit for rear-mounted bicycle rack	30	A000 890 0693
Fin attachments	11	B6 688 1302
Fluorescent jacket (single, orange)	31	A000 583 0461
Fluorescent jackets (pack of 2, orange/yellow)	31	A000 583 0361
High-sheen chromed door handle recesses	11	B6 688 1237
High-sheen chromed exterior mirror cover	11	B6 688 1303
Hub caps (Roadster design in black)	08	B6 647 0201
Hub caps (Roadster design in blue)	08	B6 647 0120
Hub caps (sterling silver with chrome star)	08	B6 647 0206
Hub caps (titanium silver with chrome star)	08	B6 647 0202
Illuminated door sill panels (front door sill panels, alpaca grey)	21	B6 689 0143
Illuminated door sill panels (front door sill panels, black)	21	B6 689 0141
Illuminated door sill panels (front door sill panels, cashmere beige)	21	B6 689 0142
iPod/iPhone holder	14	B6 782 4501
"KidFix" child seat (with automatic child seat recognition)	22	A000 970 1800 9G43

Description	p	Item no.
Luggage net, floor of load compartment (short)	33	B6 766 0098
Luggage net, load sill	33	B6 766 0111
Luggage-securing feature	33	A001 987 1414
Luggage set (for MB roof box L)	27	A000 890 0411
Luggage set (for MB roof box XL)	27	A000 890 0511
Media Interface video cable (ECE)	14	A001 827 8004
Mercedes-Benz Bluetooth telephone module	15	on request
Mercedes-Benz iPod Interface Kit (ECE, not in conjunction with Code 810)	14	B6 782 4502
Mercedes-Benz iPod Interface Kit (ECE, only in conjunction with Code 810)	14	B6 782 4503
Mercedes-Benz iPod Interface Kit, Video (ECE)	14	B6 782 4563
Mercedes-Benz roof box M (titanium metallic, opens on right)	27	A000 840 2562
Mercedes-Benz roof box L (titanium metallic, opens on right)	27	A000 840 2362
Mercedes-Benz roof box XL (titanium metallic, opens on right)	27	A000 840 2762
Mobile-phone holders The range is being extended all the time. Please contact your Mercedes-Benz partner for details	15	on request
Mud flaps (front set, black)	08	B6 652 8242
Mud flaps (rear set, black)	08	B6 652 8237
New Alustyle basic carrier bars	28	B6 781 2141
New Alustyle bicycle rack	29	A000 890 0293
New Alustyle ski and snowboard rack "Comfort"	28	B6 685 1703
New Alustyle ski and snowboard rack "Standard"	28	B6 685 1702
Non-slip mat (long)	33	B6 768 0070
Non-slip mat (short)	33	B6 768 0071
Partition net	32	B6 766 0114
Rear-mounted bicycle rack for trailer coupling (ECE)	30	A000 890 0593
Rear Seat Entertainment System	16	on request

Description	p	Item no.
Rectifier	31	A000 982 0021
Reversible mat with load sill protection (long)	32	B6 768 0064
Reversible mat with load sill protection (short)	32	B6 768 0067
Rim locks	07	B6 647 0156
RUD-matic snow chain system (265/60 R18 and 265/55 R19)	08	B6 755 0030
Running board	11	B6 688 0630
Safety tow rod	31	A000 890 0224
SD memory card (ECE, COMAND APS)	17	B6 782 3973
Shallow boot tub	32	B6 668 0060
Shopping crate	33	B6 647 0995
Ski bag (single, for MB roof box L and XL)	27	A000 846 0806
Ski bag for interior	29	A000 890 0711
Ski rack insert (for MB roof box L)	27	A000 840 4718
Ski rack insert (for MB roof box XL)	27	A000 840 4818
Spectacles box	21	A000 810 0704
Stowage crate	32	A000 814 0041
Tie-down strap	33	A000 890 0294
Trailer coupling (detachable)	31	A164 310 2004
Trailer coupling (rigid)	31	A164 310 1604
Transport and stowage bag	26	A000 890 0111
Tyre pressure gauge	06	B6 658 8140
Valve caps	07	B6 647 2001
Vario bag (Alcantara, java)	23	A000 899 2061
Vario bag (Angel & Driver)	23	A000 899 1861
Vario bag (DaimlerSquare)	23	A000 899 1961
Wheel bolts	07	B6 647 0161
Wood/leather steering wheel	20	on request

Mercedes-Benz and AMG light-alloy wheels for the GL-Class

incenio designer wheels



19	ALDHANAB
7-spoke wheel	
8.5 J x 19 ET 56 · 275/55 R19	
B6 647 4335	
Finish: sterling silver	



19	PERIM
Multi-spoke wheel	
8.5 J x 19 ET 56 · 275/55 R19	
B6 647 4567	
Finish: titanium silver, high-sheen	



19	PERIM
Multi-spoke wheel	
8.5 J x 19 ET 56 · 275/55 R19	
B6 647 4568	
Finish: two-tone	



20	MEREM
5-spoke wheel	
8.5 J x 20 ET 56 · 275/50 R20	
B6 647 4565	
Finish: titanium silver, high-sheen	



20	MEREM
5-spoke wheel	
8.5 J x 20 ET 56 · 275/50 R20	
B6 647 4566	
Finish: two-tone	

On all light-alloy wheels, use wheel bolt B6 647 0161 and the corresponding rim lock B6 647 0156

Light-alloy wheels are supplied without tyres, wheel bolts or hub caps

Snow chain systems: please contact your Mercedes-Benz partner to find out about using snow chains with your light-alloy wheels

A word of advice: because of differences in national regulations, various different versions of each vehicle exist. Please also bear in mind that vehicle development is permanently ongoing. As a result, not all of the wheel/tyre combinations shown in this brochure will be approved for your particular Mercedes-Benz. Your Mercedes-Benz partner, however, has access to constantly updated information on every Mercedes-Benz wheel, including the relevant technical inspection findings and licensing conditions, and will be happy to advise you

With low-profile tyres, the tyres, wheels and parts of the suspension are subject to higher loads and are generally, therefore, more susceptible to damage, e.g. from uneven road surfaces



20	RECHEO
5-spoke wheel	
8.5 J x 20 ET 56 · 275/50 R20	
B6 647 4569	
Finish: titanium silver, high-shine	



20	RECHEO
5-spoke wheel	
8.5 J x 20 ET 56 · 275/50 R20	
B6 647 4570	
Finish: two-tone	



20	TOMEKO
10-spoke wheel	
8.5 J x 20 ET 56 · 275/50 R20	
B6 647 4528	
Finish: two-tone	



20	TYNDARIDES
5-spoke wheel	
8.5 J x 20 ET 56 · 275/50 R20	
B6 647 4210	
Finish: sterling silver	

Mercedes-Benz and AMG light-alloy wheels for the GL-Class

Standard and optional



18 5-SPOKE WHEEL

8 J x 18 ET 53 · 265/60 R18

B6 647 4564

Finish: titanium silver



18 5-SPOKE WHEEL

8 J x 18 ET 53 · 265/60 R18

B6 647 4312

Finish: titanium silver



19 5-TWIN-SPOKE WHEEL

8.5 J x 19 ET 56 · 275/55 R19

B6 647 4211

Finish: titanium silver



19 5-SPOKE WHEEL

8.5 J x 19 ET 56 · 275/55 R19

B6 647 4219

Finish: titanium silver



20 5-SPOKE WHEEL

8.5 J x 20 ET 56 · 275/50 R20

B6 647 0166

Finish: tremolite metallic,
high-sheen

On all light-alloy wheels, use wheel bolt B6 647 0161 and the corresponding rim lock B6 647 0156

Light-alloy wheels are supplied without tyres, wheel bolts or hub caps

Snow chain systems: please contact your Mercedes-Benz partner to find out about using snow chains with your light-alloy wheels

A word of advice: because of differences in national regulations, various different versions of each vehicle exist. Please also bear in mind that vehicle development is permanently ongoing. As a result, not all of the wheel/tyre combinations shown in this brochure will be approved for your particular Mercedes-Benz. Your Mercedes-Benz dealer, however, has access to constantly updated information on every Mercedes-Benz wheel, including the relevant technical inspection findings and licensing conditions, and will be happy to advise you

With low-profile tyres, the tyres, wheels and parts of the suspension are subject to higher loads and are generally, therefore, more susceptible to damage, e.g. from uneven road surfaces

AMG light-alloy wheels



20 5-SPOKE WHEEL

8.5 J x 20 ET 56 · 275/50 R20

B6 647 0129

Finish: titanium silver or
himalayas mid grey B6 647 0165



20 5-TWIN-SPOKE WHEEL

8.5 J x 20 ET 56 · 275/50 R20

B6 647 0131

Finish: titanium silver



21 AMG 5-SPOKE WHEEL

Style III

10 J x 21 ET 37 · 295/40 R21

B6 603 1239

Finish: silver, high-sheen rim flange;
wheel-arch flaring required



21 AMG 5-SPOKE WHEEL

Style VI

10 J x 21 ET 37 · 295/40 R21

B6 603 1070

Finish: silver, high-sheen;
wheel-arch flaring required

Please note: changes may have been made to the products since this brochure went to press (31.08.2009). The manufacturer reserves the right to make changes to the design, form, colour and specification during the delivery period, provided these changes, while taking into account the interests of the vendor, can be deemed reasonable with respect to the purchaser. Where the vendor or the manufacturer uses symbols or numbers to describe an order or the subject of an order, no rights may be derived solely from these. The illustrations may show accessories and items of optional equipment which are not part of standard specification. Colours may differ slightly from those shown in the brochure, owing to the limitations of the printing process. This brochure has been compiled by Daimler AG of Germany and is distributed internationally. It provides a general indication of the range of models, features, optional extras and/or colours available in various countries. Some of the models, features, optional extras and/or colours may not be available in your country or may only be available in a different specification. Additionally some models, features, optional extras and/or colours may only be available in combination with others. For current and more specific information in relation to the range of models, features, optional extras and/or colours available in your country, and their pricing, you should contact your nearest authorised Mercedes-Benz Passenger Car Dealer.