

# AYGO



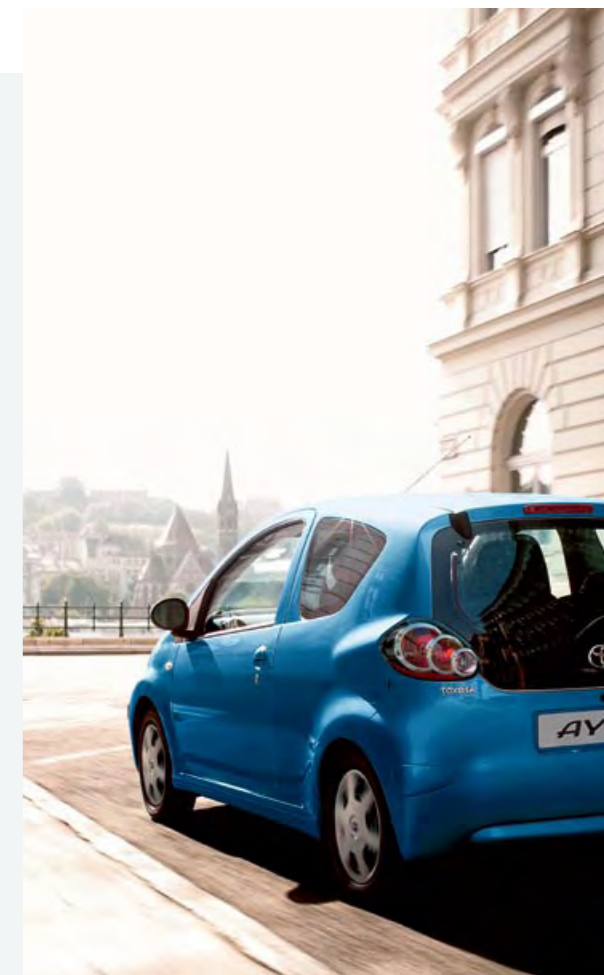
ENHANCED PERFORMANCE  
LOWER CO<sub>2</sub>  
BETTER FUEL ECONOMY

# Get ready

THIS IS MODERN LIVING, AYGO STYLE.



## Index



### Exterior and interior

Great design inside and out

### Performance and engines

Making light work of city streets

### Safety

Protection for you and your AYGO

### AYGO grades

One car. Four grades. Your choice

### Personalisation packs

Take an AYGO – make it even better

### Accessories

Extras to customise your AYGO

### Environment

Living up to our responsibilities

### Toyota service

Giving you peace of mind

### Specifications

The full lowdown at a glance

# Go your own way

THEY SAY THAT LOOKS AREN'T EVERYTHING.  
WE SAY THEY'RE WRONG.

**AYGO: small car,** big impression. It's four-wheeled proof that life doesn't have to be ordinary.

First, notice the low, sporty profile. That distinctive bullet-shaped body with its striking silhouette. Those flared wheel arches and stand-out headlights, paired with chrome-ringed combination rear lights around the back. AYGO may be many things, but is it ordinary? No chance.

AYGO comes up with the goods, as well. A couple of examples: that compact body we mentioned delivers a remarkably spacious interior; those headlights create a brighter double-beam shape. You'll find out more over the following pages.

A choice of two colours are available for AYGO and AYGO+: Chilli Red and Carbon Quartz, whilst AYGO Blue and AYGO Black are offered in exclusive metallic Cayman Blue and Tempest Black. AYGO is available with three or five doors and four levels of equipment.





# The inside story

A GRIPPING TALE ABOUT BIG SPACES  
AND ENDURING DESIGN.

**AYGO: small car,** big interior. Amazingly big, in fact: there's class-leading space, and enough headroom for anyone up to 1.91m tall. Yet both three- and five-door models are only 3.4m long.

## Instant appeal

That creative thinking you saw on the exterior continues inside. Your chosen paint colour is used on the door trims, making the interior feel more spacious and contemporary. Functional elements get the treatment, too: the front air vents, for example, have a smooth, sculpted shape **(01)**

The single combined instrument panel has easy-to-read, two-tone displays. Nearby on the central column you'll notice the audio input on the optional CD/radio, and backlit controls for optional air conditioning.

Once you're on the road you'll appreciate the interior quality even more, as noise and vibration are kept to a minimum.

## Fabric and trim

AYGO Blue and AYGO+ benefit from the exclusive Mestizo trim, and the Bartok Black trim is fitted on the AYGO. The AYGO Black has the suede-like Alcantara® and leather trim as standard. Either way, the seats are supportive and sporty, and the quality is excellent. The dashboard is finished with an advanced, hard-wearing sharkskin-style grain.

## Quality assurance

AYGO comes with a three year standard warranty.

## Options and upgrades

A dash-mounted tachometer **(02)** is available for all models and for AYGO+ and AYGO Black there is also the option of air conditioning.

Left: AYGO Black with manual transmission and optional air conditioning



# Ready to roll

AYGO MAKES CITY DRIVING EASY.

**City life is** better with a car that's up to the job. The daily commute, shopping, weekend escapes... it's just more fun in an AYGO.

Nimble and easy to handle, AYGO is ready for stop-start traffic and sharp corners. It's made to measure for those narrow gaps, and that tight parking space you just spotted.

The optimised suspension gives you a responsive driving experience; good all-round visibility, power steering and a turning circle of just 4.7m make driving more pleasurable, too.



# Petrol

AN EFFICIENT PERFORMANCE WITH A CHOICE OF GEARBOXES, TOO.



ENHANCED PERFORMANCE  
LOWER CO<sub>2</sub>  
BETTER FUEL ECONOMY



**Toyota Optimal Drive** means reduced CO<sub>2</sub> emissions, better fuel economy and enhanced performance. It marks the beginning of a new generation of powertrain technologies, engineered to save you money. It means you no longer have to give up performance to benefit from lower CO<sub>2</sub> and improved economy.

**The 1.0-litre VVT-i petrol engine** offers agility and performance without a big hit on the environment – or your bank account. This three-cylinder engine accelerates quickly and, at 69kg, it's the lightest on the market.

Toyota's sophisticated VVT-i technology (Variable Valve Timing – with intelligence) delivers class-leading fuel economy for combined driving (62.8mpg), low emissions (106g/km) and excellent torque (93Nm/3600rpm).

This light and compact 1.0-litre VVT-i engine has taken top honours at the 2008 International Engine of the Year Awards of the Sub-1.0 litre category. The three-cylinder petrol unit was acclaimed by the judges for its smoothness, free-revving character and clever design.

The petrol unit also offers the choice between a five-speed manual gearbox and the advanced five-speed MultiMode transmission. MultiMode allows you to switch between the convenience of an automatic system and the direct, sporty feel of a manual one, with no reduction in economy.

**01 The 5-speed MultiMode transmission**

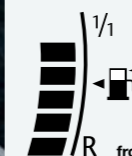


01

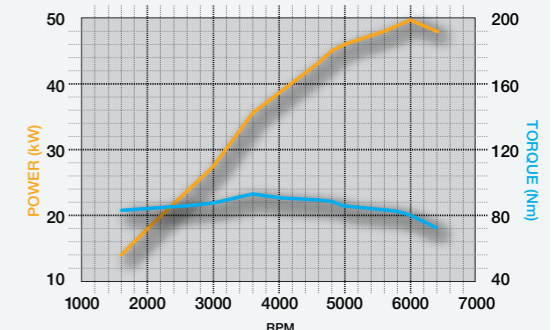


## Petrol facts

Toyota's sophisticated VVT-i technology delivers class-leading fuel economy (**62.8 mpg**), low emissions (**106g/km**), 68hp (**50kw**) and excellent torque (**93Nm/3600rpm**).



Fuel consumption:  
**62.8 mpg**  
(combined cycle)  
CO<sub>2</sub> emissions:  
from 106 g/km (combined cycle)



# All-round protection

FROM AIRBAGS TO TRACTION CONTROL, HERE'S WHERE AYGO PLAYS IT SAFE.



## Body strength

AYGO incorporates Toyota's Minimum Intrusion Cabin System. This helps to disperse and absorb impact energy during collisions from the front.

## Braking performance

An anti-lock braking system (ABS) helps you keep control during emergency braking. Electronic brake-force distribution (EBD) applies the appropriate braking force to each wheel to compensate for different weight loads during cornering and heavy straight-line braking.

## Always in control

Optional Vehicle Stability Control (VSC) across all models, with integrated traction control intervenes whenever the vehicle is at risk of sliding out of control, by applying the brake on the appropriate wheel.

## Airbags and seatbelts

There are three-point seatbelts both front and rear; front seatbelts incorporate pre-tensioners and force limiters to provide added protection. SRS driver and front passenger airbags are fitted to every vehicle; SRS side airbags are standard on AYGO+. AYGO Blue and AYGO Black. For children, ISOFIX anchor points – an easy and safe way to fit child seats – are standard on AYGO+, AYGO Blue and AYGO Black.

## Euro NCAP results

These safety features have earned AYGO the following star ratings from the European New Car Assessment Programme (Euro NCAP): four stars for adult occupant protection; four stars for child protection and two stars for pedestrian protection.

## Security

AYGO protects itself, too: every AYGO features an anti-theft engine immobiliser.



# Dress to impress

FOUR GRADES, TWO PERSONALISATION PACKS AND A WEALTH OF ACCESSORIES: THERE'S NO SUCH THING AS A STANDARD AYGO.





# AYGO

CLASS-LEADING SPACE, TOYOTA QUALITY AND CLEVER CITY THINKING.

# AYGO+

ALL THAT'S GREAT ABOUT AYGO, PLUS A BUNCH OF EXTRA FEATURES.

01



## Standard

### 01 AYGO interior

Classic Bartok Black interior trim; single combined instrument panel; central console with optional CD/radio with two speakers. Dashboard is finished with a hardwearing sharkskin-style grain. Sporty seats provide better side support and come in a black durable fabric.

### 02 Sculpted front air vents

### 03 Six-spoke wheel covers

## Optional extras

Dash-mounted tachometer  
Vehicle Stability Control (VSC), with curtain airbag

01



02



03



04



02

03



## Standard

### 01 Two-tone Mastizo Black trim, and six-speaker CD/radio

The CD/radio fitted includes an audio input socket, plus up to six speakers (including two tweeters). System operates for 30 minutes after ignition key is removed, with automatic turn-off. AYGO+ also features body-coloured door handles and mirrors, and optional metallic paint.

### 02 Electric front windows

Plus wireless door lock.

### 03 Six-spoke wheel covers

Includes headrests and two ISOFIX anchor points for compatible child seats.

### 04 50/50 split rear seats

## Optional extras

### Manual air conditioning

Integrated into the central console. Features pollen filter and air recirculation.

Dash-mounted tachometer  
Vehicle Stability Control (VSC)  
Bluetooth® hands-free system



home



previous



next



index



show menu



print



zoom in



zoom out



save



help



TODAY TOMORROW **TOYOTA**

# AYGO Blue

A STRIKING NEW AND EXCLUSIVE COLOUR, PAIRED WITH HI-TECH BLUETOOTH® CAPABILITIES AND MORE.

## Standard

### AYGO Blue

Everything you'll find on AYGO with the addition of exclusive Cayman Blue paintwork, body-coloured side protection strips and these superb new features:

#### Manual air conditioning

Integrated into the central console.

Features pollen filter and air recirculation.

#### 01 Colour-coordinated instrument-cluster surrounds

Air vents and speedometer and are fitted with matching Cayman Blue surrounds.

#### 02 Stylish Wheel covers

#### 03 Bluetooth® hands-free system

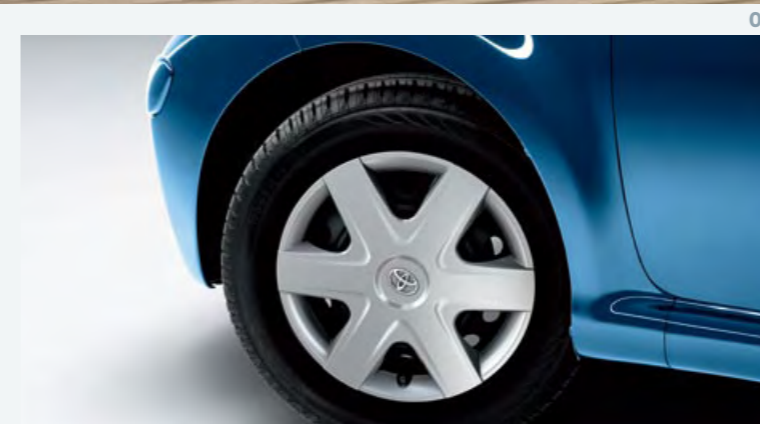
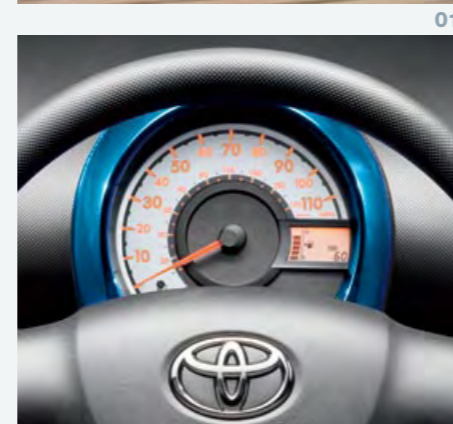
Take and make calls on the move with voice recognition, call transfer and more.

## Optional extras

### Vehicle Stability Control (VSC)

When cornering too fast or whenever driving in slippery conditions, VSC acts to reduce side slippage of tyres, helping you maintain grip and giving you back control.

### Dash-mounted tachometer



# AYGO Black

STYLISH AND SPORTY. THE NIPPY AND NIMBLE AYGO IS A HEAD-TURNER IN TOWN AND EFFORTLESSLY SHOWS ITS PACES ON THE OPEN ROAD.



01



02



03



04

## Standard

### AYGO Black

Totally responsive to all demands, you could be forgiven for imagining you were driving a sports car. Aygo Black has everything you could wish for in a high technology and well engineered hatchback.

- 01 Black metallic paint
- 02 14" alloy wheels
- 03 Alcantara® & leather seats
- 04 Leather steering wheel and gear knob\*

\*Manual only.

## Optional extras

- Manual air conditioning
- Dash mounted tachometer

Please order when purchasing the vehicle.



# AYGO packs

YOUR STYLE, YOUR WAY – CREATE AN AYGO TO SUIT YOUR LIFE WITH THESE EXCLUSIVE OPTIONS.



## AYGO Xtra protected pack

Keep your new AYGO in pristine condition with a range of protective technology and accessories

**01 Black side mouldings (AYGO Black only)**  
**02 Rear bumper protection mouldings (AYGO Black only)**

**03 Carpet mat set**  
**04 Front and rear mud flaps**  
**05 Rear parking sensors**



## AYGO Style pack

Exclusive sporty accessories for your AYGO.

**01 14" alloy wheels and locking wheel nuts**  
**02 Scuff plates (front pair)**  
**03 Fog lamps (front pair)**

\*Designed by Toyota Motorsport TF1.

# AYGO Xtra Accessories

## Body exterior

- Mud flaps, front pair, rear pair
- Side mouldings 3 & 5 doors
- Rear moulding

## Convenience

- Ashtray kit
- Glovebox lid
- Sun blinds (back door, 3 & 5 door)
- Sun blinds (qtr window, 3 door, set)
- Sun blinds (rear door, 5 door, set)
- Toyota Hands Free phone kit
- Toyota Parking Aid (TPA400 rear sensors)

## Decals

- Flower decal, bonnet
- Aygo Sport decal 3 door front door & rear panel - all colours
- Flower decal 3 door, rear panel

## Emergency

- Fire extinguisher, 1 kg
- First aid kit
- Toyota reflective jacket
- Warning triangle

## Interior trim

- Rubber floor mats, set 4
- Velour carpet mats, set 4
- Scuff plates, brushed aluminium, 3 & 5 doors
- Shift knob, aluminium, Sport version (manual only)

## Lights

- Fog lamps with chrome bezels
- Footlight illumination

## Load space

- Boot liner 3 & 5 door
- Seat storage bag, blue/black
- Coat hanger

## Locks

- TRACKER Stolen Vehicle Tracking systems - Monitor & Horizon
- Vehicle Security System: VSS3 remote alarm

## Roof

- Roof rack, 3 & 5 doors
- The following can only be fitted with the roof rack:
  - Barracuda bike holder, lockable, holds one bicycle
  - Canoe holder, holds one canoe
  - Luggage box, silver "Standard" 380L
  - Luggage box, black "Luxury" 380L
  - Luggage/ski box, black "Luxury" 390L
  - Luggage/ski box, silver "Standard" 410L
  - Sailboard/mast holder
  - Large ski holder, 6 pairs of skis or 4 surfboards, lockable
  - Small ski holder, 4 pairs of skis or 2 surfboards, lockable

## Safety

- Child restraint seat Baby Safe Plus G0+, birth to 13kg (approx. up to 15 months)
- Child restraint seat Duo Plus G1+, 9 to 18kg (approx. 8 months to 4 years)
- Child restraint seat G2+3 kid plus seatbelt fix, new model with high sides, 15 - 36kg (approx. 3 years to 12 years)
- Baby Safe Plus Adapter ISOfix

## Style

- Alloy pedals (manual transmission only)
- Tachometer with grey or blue surround
- Footlight illumination
- Exhaust pipe finisher
- Leather steering wheel
- Rear chrome garnish
- Rear skirt\* (cannot be fitted with exhaust pipe finisher)
- Roof spoiler\*
- Side skirts\*

## Technical/audio enhancements

- Bluetooth® complimentary kit
- iPod® integration kit
- Homelink®
- Subwoofer

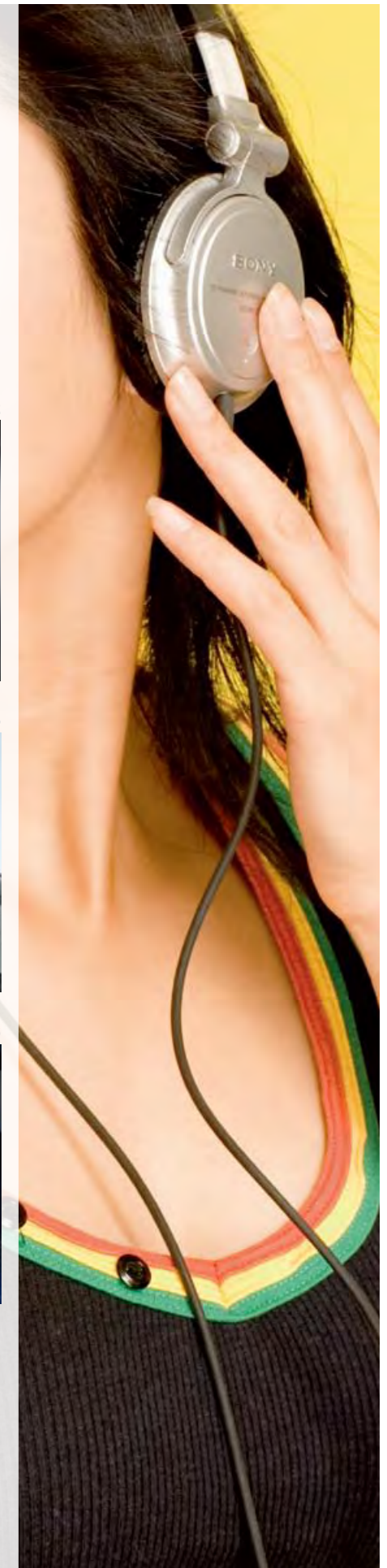
## Wheels

- 14" 5 spoke alloy wheel
- 14" - Antibes Silver alloy wheel
- 14" - Antibes Anthracite alloy wheel
- 14" - Antibes Sterling Silver
- 14" - Ateles Silver alloy wheel
- 14" - Ateles Anthracite alloy wheel
- Locking wheel nuts

## Opposite page:

- 01** iPod® integration kit
- 02** Tachometer
- 03** Bluetooth® complimentary kit
- 04** Ski holder
- 05** Bike holder
- 06** Footlight illumination
- 07** Glovebox lid

\*(Painted to match body colour)



## Our aim is 'Zero Emissions'

We have sold more than **1 million Toyota hybrid cars** worldwide. So it's no surprise that most people associate eco-friendlier cars with Toyota. It's our mission to make a difference – by investing in greener technology that helps to protect our planet.

### Assessing a vehicle's whole life cycle



### Ten tips for a Toyota Eco-Drive and save up to 30% on your CO<sub>2</sub> emissions

Lowering emissions is something we can all do to help the environment. It's simply a matter of changing the way we drive.

- |  |  |  |   |
|--|--|--|---|
|  | <b>01</b> Remove any extra weight and roof load            |  | <b>06</b> Shift up gear earlier   |
|  | <b>02</b> Plan your route and avoid detours                |  | <b>07</b> Only use electrical accessories when necessary (eg A/C)             |
|  | <b>03</b> Avoid using your car for short journeys          |  | <b>08</b> Follow and anticipate traffic flow                                  |
|  | <b>04</b> Check your tyre pressure regularly               |  | <b>09</b> Keep your windows closed (use the ventilation system when possible) |
|  | <b>05</b> Service your car according to the owner's manual |  | <b>10</b> Switch off your engine if you have to wait longer than 60 seconds   |

# Toyota and you

DRIVE AWAY AN AYGO FOR LESS! FROM GREAT FINANCE PLANS TO THE SUPERB BENEFITS OF COMPLIMENTARY CLUB TOYOTA MEMBERSHIP, YOU'RE BETTER OFF WITH A TOYOTA

## Flexible Finance from Toyota Financial Services

**When choosing your new car you will make sure you choose the right model, the right specification and the right colour to suit you. Choosing how you finance your car is just as important.**

Our range of finance plans have been designed with simplicity in mind to make funding your car as easy as driving it. All our plans offer easy budgeting and peace of mind and **Access Toyota** brings these and other benefits together in one flexible package.

**Access Toyota** is a finance plan that puts you in control. You don't have to worry about finding a large deposit as you agree the amount of deposit that you want to pay and choose your repayment term from 2 to 3 years.

What makes **Access Toyota** different is that Toyota Financial Services (TFS) give your vehicle the security of a guaranteed future value (GFV) which is your optional final payment, deferred to the end of the agreement. Affordable monthly payments are yours to enjoy as your repayments are based on the vehicle selling price less your deposit and the GFV/optional final payment, plus the cost of borrowing.

In addition, you can have reassurance against the risk of a fall in used car prices, knowing the minimum amount your Toyota will be worth at the end of your agreement is guaranteed at TFS. Then when your agreement comes to an end you have three flexible choices:

- Part exchange your vehicle for a brand new Toyota
- Pay your final payment (the GFV) and take full ownership of the car\*
- Simply hand the car back with nothing more to pay\*\*

Ask your Toyota Centre to show you how **Access Toyota** could be the best choice for you.

## Flexible Finance for all Toyota customers

Whatever your needs, to complement **Access Toyota**, TFS has a full range of finance options to offer. From traditional Hire Purchase to Contract Hire and Leasing. Whether you're a private motorist with a fixed monthly budget in mind or a business customer looking for VAT efficient funding options, just discuss your individual requirements with your Toyota Centre. They will be pleased to show you how convenient and competitive Toyota Financial Services can be.

Toyota Financial Services, Great Burgh, Burgh Heath, Epsom, Surrey, KT185UZ. Finance subject to status to over 18s only. Indemnities may be required. Terms and conditions apply.

\*On payment of the option to purchase fee.

\*\*Subject to mileage and fair wear and tear conditions being met. TFS is authorised and regulated by the Financial Services Authority.

## AYGO Insure

As an AYGO owner, you can insure your AYGO through Toyota Motor Insurance, offering you a 24-hour one-stop claim service and guaranteed access to the Toyota approved repairer network. This will ensure, should you have an accident, you will get your AYGO repaired to Toyota's high standards. Having purchased your new AYGO you automatically become a member of Club Toyota entitling you to a 5% discount off your motor insurance premium.

Our Toyota approved repairer network can usually commence repairs within 24 hours of estimate and, where possible, will provide a courtesy car while your vehicle is being repaired. As our approved repairers only use genuine Toyota parts, all repairs are guaranteed by them for three years.

Comprehensive cover also includes new car replacement if within 12 months of you buying it new your AYGO is written off or stolen and not recovered; 45 days cover within the European Union; insurance transfer to a courtesy car supplied to you by a Toyota Centre or Toyota approved repairer while your AYGO is being serviced or undergoing warranty repairs; unlimited cover for your Toyota standard fitted audio and navigation equipment and emergency overnight accommodation up to £250.

**For more information visit [www.toyotainsurance.co.uk](http://www.toyotainsurance.co.uk), or call 0800 350 500.**

Terms and conditions apply. Full policy details are available on request. Toyota Motor Insurance is managed on behalf of Toyota (GB) PLC, registered in England (No. 916634) by Royal and Sun Alliance. It is underwritten by Aioi Motor and General Insurance Company of Europe Limited. Authorised and regulated by the Financial Services Authority. Registered in England and Wales (No. 5046406). Registered office at 5th Floor, 11 Old Jewry, London EC2R 8DU. For your protection, telephone calls will be recorded and may be monitored.

## Toyota Accident Assistance

At Toyota, we believe that our customers deserve the best possible care. Therefore if you are involved in an accident, one call to Toyota Accident Assistance will get you back on the road again, whilst we take care of liaising with your insurer and arranging for your car to be repaired.

By making us your first call, we will ensure your vehicle is repaired by Toyota to factory standards, meaning no compromise to your warranty or residual value.

## Toyota Warranties

Every new Toyota comes with a three-year/60,000 mile manufacturer's warranty, covering your car against the unlikely event of a manufacturing defect causing a mechanical fault, a paintwork defect or surface rust. After the initial warranty period has ended, you can extend your warranty until the vehicle is seven years old – choosing from a range of packages to suit your vehicle and your needs. All of our warranties cover the main component parts of the vehicle\*, meaning that you pay for nothing beyond routine servicing and maintenance, so there are no unexpected bills to pay.

\* With the exception of batteries, corrosion of exhaust and damage or wear to the interior. Please refer to our Terms and Conditions for full details.

## Club Toyota

When you buy a Toyota you automatically become a member of Club Toyota, for 12 months free of charge. This entitles you to take advantage of a host of benefits including free RAC Roadside Assistance in the UK and Europe, specially negotiated rates for travel insurance, a 5% discount off Toyota Motor Insurance, plus exclusive offers and promotions through our quarterly customer magazine. For further information please call 0845 275 5555 or visit [toyota.co.uk/club](http://toyota.co.uk/club).

When choosing your new car you will make sure you choose the right model, the right specification and the right colour to suit you. Choosing how you finance your car is just as important.

# Peace of mind guaranteed

BUY AN AYGO AND BENEFIT FROM THE QUALITY, SUPPORT AND REASSURANCE ENJOYED BY ALL TOYOTA OWNERS.

Your AYGO is manufactured using state-of-the-art technology and rigorous quality control. You'll also enjoy the peace of mind that comes from our comprehensive service and support network.

## Toyota genuine parts

The AYGO is designed to minimise the cost of accident repair. Energy-absorbing elements are built into the bumpers, expensive-to-replace parts are located away from damage zones, and commonly damaged body parts are bolted rather than welded in place. As a result, the extent of damage is limited, and damaged parts are easy to remove, replace or repair. With highly competitive pricing of Toyota spares, this means very low parts and labour charges.

## Toyota warranty Comprehensive terms

The warranty covers any defect caused by a manufacturing or assembly fault. It is valid for three years of normal use or 100,000 km, whichever comes first, with no mileage limitation for the first year. If the car is immobilised due to a breakdown (as a result of a defect covered under warranty), you will also be covered for the cost of towing your vehicle to the nearest authorised Toyota repairer.

## Rust and paint defects

The warranty also covers surface rust and paint defects appearing on any of the painted body panels as a result of a fault in materials for a period of three years, regardless of mileage.

## Corrosion cover

The warranty offers 12 years' coverage, regardless of mileage, against perforation of the bodywork (from inside to outside) that develops due to corrosion caused by faults in materials or workmanship.

## Toyota quality service

Your Toyota Centre will talk you through the convenient AYGO 'Health and Safety' maintenance programme. In effect, your AYGO needs a full Health and Safety check by an authorised Toyota repairer up to once every two years or 30,000 km (whichever comes sooner, and dependent on driving style and conditions).

An intermediate Oil and Filter service (with engine oil-level inspection for AYGO 1.4-litre diesel engines) is also necessary every year or 15,000 km, when you'll also receive a free check on your braking and steering systems, lights and tyres (for all AYGO models).

## Car recycling

Taking care of the environment is a priority for Toyota. We're making a huge effort to ensure that during the life cycle of our vehicles – from design, production, distribution, sales and service to end-of-life – their environmental impact is minimised.



# Take your pick

COLOURS, TRIMS AND OPTIONS:  
EVERYTHING YOU NEED TO SPECIFY YOUR IDEAL AYGO.



**Anthracite Grey (1E0)**



**Tempest Black (211)**



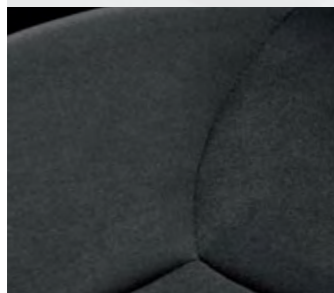
**Chilli Red (3P0)**



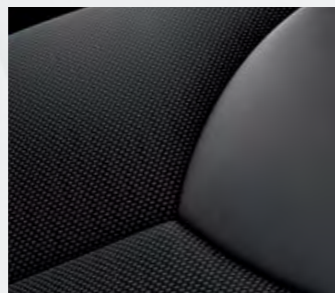
**Cayman Blue (8U7)**

	AYGO	AYGO+	AYGO Blue	AYGO Black
Anthracite Grey (1E0)	-	•	-	-
Chilli Red (3P0)	•	•	-	-
Tempest Black (211)	-	-	-	•
Cayman Blue (8U7)	-	-	•	-

## Trim options



**Bartok Black interior trim (AYGO)**

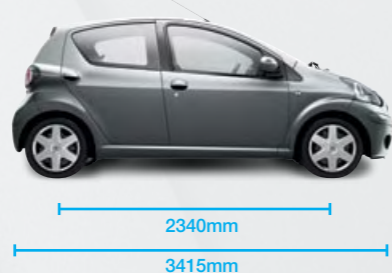
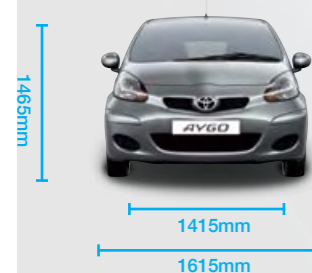


**Exclusive Mestizo interior trim (AYGO+ and AYGO Blue)**



**Exclusive Alcantara® and leather interior trim (AYGO Black)**

## Dimensions



## Specifications

Environmental performance	1.0-litre VVT-i (5 M/T and 5 M/M)
Fuel consumption (EU directive 2001/100/CE-1999/100/CE-2004/3/EC)	
Combined driving (mpg)	62.8 (M/T) / 61.4 (M/M)
Urban driving (mpg)	51.4 (M/T) / 51.4 (M/M)
Extra-urban driving (mpg)	72.4 (M/T) / 68.9 (M/M)
Recommended fuel grade	95 (or more) Octane
Fuel tank capacity (litres)	35
Carbon dioxide, CO <sub>2</sub>	
Combined driving (g/km)	106 (M/T) / 107 (M/M)
Urban driving (g/km)	128
Extra-urban driving (g/km)	95
Exhaust emissions EC WVT A e11*70/220*2003/76B*2554*02	
Euro Class	Step 4
Carbon monoxide, CO (g/km)	0.35
Hydrocarbons, HC (g/km)	0.05
Nitrogen oxides, NOx (g/km)	0.03
Hydrocarbons, HC and Nitrogen oxides, NOx (g/km)	N/A
Particulates, PM (g/km)	N/A
Noise, drive-by (EU directive 1999/101/EC) dB(A)	72.0
Engine	1.0-litre VVT-i (5 M/T and 5 M/M)
Engine code	1KR-FE
Number of cylinders	3 in-line
Valve mechanism	12-valve DOHC VVT-i chain drive
Fuel injection system	Electronic fuel injection
Displacement (cc)	998
Bore x stroke (mm x mm)	71.0 x 84.0
Compression ratio	10.5:1
Maximum output (kW/rpm)	50 (68 DIN hp)/6000
Maximum torque (Nm/rpm)	93/3600

The fuel consumption and CO<sub>2</sub> values are measured in a controlled environment, in accordance with the requirements of Directive 80/1268/EEC incl. its amendments, on a basic production vehicle. For further information about or if you are interested in buying a basic production vehicle, please contact Toyota (GB) PLC. The fuel consumption and CO<sub>2</sub> values of your vehicle may vary from those measured. Driving behaviour as well as other factors (such as road conditions, traffic, vehicle conditions, installed equipment, load, number of passengers, etc.) play a role in determining a car's fuel consumption and CO<sub>2</sub> emissions.

## Equipment

Exterior	AYGO	AYGO+	AYGO Blue	AYGO Black
Bumpers: colour-keyed	•	•	•	•
Bumper corner protectors: colour-keyed	•	•	•	•
Door handles: colour-keyed	-	•	•	•
Door mirrors: colour-keyed	-	•	•	•
Comfort				
Electric power steering	•	•	•	•
Tilt-adjustable steering column	•	•	•	•
Mestizo trim	-	•	•	-
Bartok Black trim	•	-	-	-
Alcantara® trim, stitched leather-trimmed steering wheel & gear knob (M/T only)	-	-	-	•
Integrated audio with radio/CD and 6 speakers	-	•	•	•
Integrated audio with radio/CD and 2 speakers	•	-	-	-
Easy entry system (3-door only)	•	•	•	•
Mono folding rear seats	•	-	-	-
50/50 split rear seats with 2 ISOFIX CRS anchor points	-	•	•	•
Rear window defogger and wiper	•	•	•	•
Manual air conditioning with pollen filter and air recirculation	-	•	•	•
Bluetooth® hands-free system	•	•	•	•

Performance	1.0-litre VVT-i (5 M/T and 5 M/M)			
Maximum speed (mph)	93			
Acceleration (in sec) 0 to 62mph	14.2 (5 M/T) / 14.9 (5 M/M)			
Minimum tyre turning radius (in metres)	4.7			
Suspension				
Front	MacPherson strut system			
Rear	Torsion beam			
Brakes				
Front	Ventilated disc brakes			
Rear	Drum brakes			
Tyres and wheels				
6-spoke 14" wheels with full wheel cap	•	•	•	-
5-spoke 14" alloy wheels	-	-	•	•
Transmission				
5 M/T	•	•	•	•
5 M/M	-	•	•	•
Dimensions and weights				
Overall length (mm)	3415			
Overall width (mm)	1615			
Overall height (mm)	1465			
Wheelbase (mm)	2340			
Front tread (mm)	1415			
Rear tread (mm)	1405			
Kerb weight (kg)	800-915			
Gross vehicle weight (kg)	1180-1245			

Safety	AYGO	AYGO+	AYGO Blue	AYGO Black
Crash-resistant body structure with Minimum Intrusion Cabin System	•	•	•	•
ABS with EBD	•	•	•	•
SRS front airbags: driver and passenger	•	•	•	•
SRS side airbags	•	•	•	•
SRS curtain shield airbags: front and rear	-	•	•	•
Vehicle Stability Control (VSC)	•	•	•	•
Passenger airbag switch-off	•	•	•	•
Driver seatbelt warning	•	•	•	•
Rear headrests (2)	•	•	•	•
Option packs				
XTRA PROTECTED PACK Includes: Toyota Parking Aid, side mouldings, rear bumper protection mouldings, mud flaps and carpet mats	-	-	-	•
XTRA PROTECTED PACK Includes: Toyota Parking Aid, mud flaps and carpet mats	-	-	•	-
STYLE PACK Includes: 14" alloy wheels and locking wheelnuts, scuff plates (front) and front fog lamps	-	-	•	-

M/T = Manual Transmission M/M = MultiMode  
• = Standard ○ = Optional - = n/a

To the best of our knowledge, all information in this document is correct at the time of going to print. \* Details of specifications and equipment provided in this document are subject to local conditions and requirements and may, therefore, vary from models available in your area. Please enquire with your local Toyota Centre for details on your local specifications and equipment. • Vehicle body colours may differ slightly from those illustrated.



# help

## Using the navigation bar

A navigation bar is provided at the bottom of each page of this e-brochure to make browsing it easy. Please follow the simple instructions on the right to navigate through this e-brochure.

GBNGV-019AY-VB  
March 2009



Takes the document back to the beginning.



This will take the document to the previous page.



This will take the document to the next page.



This will allow the Acrobat toolbar to be visible if pressed once and it will also make it disappear if already visible.



This will zoom in on the document so smaller text etc will be easier to read. To zoom in further, click the icon again. If the menu bar is not visible then use your mouse by clicking the left hand button and moving it.



This will zoom out of the document. To zoom out further, click the icon again. If the menu bar is not visible then use your mouse by clicking the left hand button and moving it.



This will print out the full brochure to your printer. Please note that if you have a colour printer this document will print in full colour.



This will save the whole document to your computer.

To close this document press esc and then close the document normally.

Whilst every effort is made to reproduce accurate information, we reserve the right to change specifications, equipment and availability without prior notice. This brochure cannot be regarded as infallible, (some of the vehicles shown may not be to exact UK specification), and as such does not constitute an offer for sale of any particular vehicle or specification. For the latest specification and availability we ask that you contact your local Toyota Centre.



home



previous



next



index



show menu



print



zoom in



zoom out



save



help



TODAY TOMORROW **TOYOTA**