



Das Auto.

The Fox





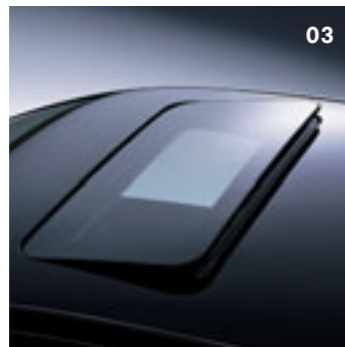
Model shown is Urban Fox with optional 14" 'Parana' alloy wheels and front fog lights.

It's a Volkswagen.

The Fox. It's stylish. It's well built. It's affordable. Oh, and it's a Volkswagen. In fact, some people say those are all the reasons you need to buy one. But we'd like to think there are a few more than that. It may be the smallest car in our range, but the Fox has everything anyone could want in a car.

Looking good has never cost so little.

Being small doesn't mean you can't make a big impression. And with its dynamic body lines, capturing the gaze of curious onlookers is inevitable. Even the contoured clear cover of the headlights and indicators demand attention. While a wide range of exterior body colours gives you the chance to enhance its compact, sporty looks even more. And of course, there's always the option to style your Fox exactly the way you want it by adding alloy wheels, a rear roof spoiler, or one of the many options or accessory packs available.



01 Model shown is Urban Fox with optional 15" 'Mendoza' alloy wheels and front fog lights.

02 The door mirrors and bumpers are body-coloured to complement your chosen colour on Urban Fox models.

03 An electric glass sunroof is available as an optional extra.

04 Halogen headlights with integrated indicators are elegantly styled with a contoured clear cover.



01

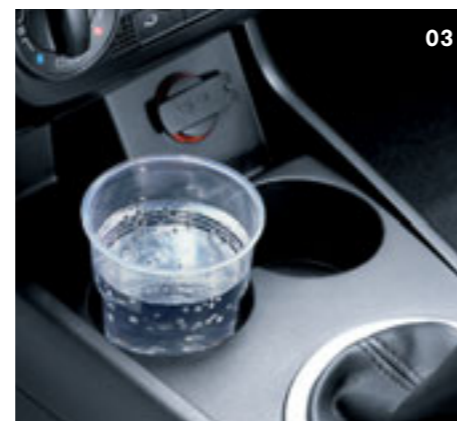
More features doesn't have to mean more money.

The Fox may be a car for everyone, but there are still two models to choose from – the Fox and Urban Fox. Simply choose the one that suits you best.

If you're looking for a practical and affordable small car to drive, then you can't go wrong with the Fox. It may have a low starting price, but you still get an impressive level of specification, including front and rear cup holders, dust and pollen filter and a height-adjustable driver's seat. There's also green tinted glass, range adjustable halogen clear headlights, one-touch indicators, speed-sensitive power-assisted steering and a radio/CD player with four speakers. Not to mention vanity mirrors and an electronic engine immobiliser all fitted as standard.

If you're in need of a few more luxuries, the Urban Fox comes with all we've mentioned plus remote central locking, sliding rear bench seat with 50:50 split folding backrest, front electric windows, body-coloured bumpers and door mirrors, easy entry front seats and manual rear vent windows.

- 01 The interior of the Fox with stylish 'Stripes' upholstery. Interior shown features optional 'Climatic' semi-automatic air conditioning and Electronic Stabilisation Programme (ESP).
- 02 The folding backrest offers flexible storage and stowage space.
- 03 Practical details include two front cup holders.
- 04 Height-adjustable driver's seat for better vision and improved posture.
- 05 Storage tray between the two rear seats helps keep things tidy and features two useful cup holders.
- 06 Controls and equipment in chrome effect give a quality look.





Model shown is Urban Fox with optional 14" 'Parana' alloy wheels, front fog lights, sunroof and Sunshine paint.

Style and quality. It's an easy choice.



Model shown is Urban Fox with optional 15" 'Mendoza' alloy wheels.

You may feel that you have everything you need to make your decision to buy a Fox. After all, you've seen how stylish the Fox looks. We've told you about all of the features that are fitted as standard. All you need to do now is speak to your retailer about a test drive or call 0800 333 666 to arrange one.

Of course, if you would like to know more about the Fox, please read on. The reasons to buy one don't stop there.



Model shown is Fox with optional 14" 'Parana' alloy wheels, manual rear vent windows and pearl effect paint.

Big on fun, big on safety.

It may be small, but the Fox is very big on safety – like every Volkswagen. The Fox is built around a rigid, galvanised body that's laser welded to ensure all of the panels sit tightly together. The end result is a body so strong, it can absorb impact energy and thereby protect the driver and passengers within a protective inner cell – just in case. These features have resulted in the Fox achieving four stars in the Euro NCAP ratings.

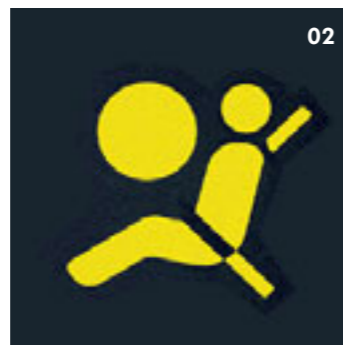
Small passengers are also well protected with innovative Isofix child seat preparation in the rear, allowing approved child seats to be secured directly to the Fox's chassis for maximum safety. Installing and removing them is so simple it is, quite literally, child's play.

It goes without saying that the Fox is also fitted with both driver's and front passenger's airbags as standard, as are three-point seat belts with height adjustment in the front and front and rear head restraints. If you do need to brake suddenly, the Anti-lock Braking System (ABS) will prevent the wheels from locking, helping you to keep control of the car.

And because you can never be too careful, side airbags and front fog lights are available as an option, along with the Electronic Stabilisation Programme (ESP) which reacts to critical situations in milliseconds to adjust the engine's power and braking.



01 The optional alarm with interior protection has a monitor that detects movement in the car and, if appropriate, triggers the alarm.



02 Airbags for the driver and front passenger are fitted as standard.



03 Side airbags for the driver and front passenger are available as an optional extra.



04 A fully adjustable steering column assures the most comfortable driving position.



05 The Anti-lock Braking System (ABS) prevents wheels from locking when braking suddenly and is fitted as standard.



06 The optional Electronic Stabilisation Programme (ESP) reacts to critical situations within milliseconds.

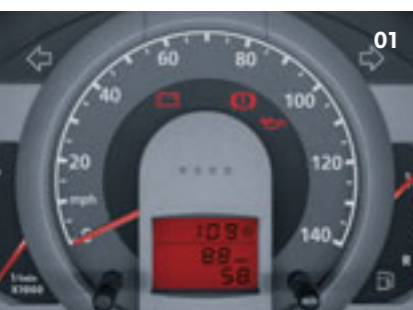


Interior shown features optional 'Climatic' semi-automatic air conditioning, Electronic Stabilisation Programme (ESP) and front fog lights.

No room for excuses.

Lack of space is certainly no reason not to buy a Fox. In fact, once you're inside you'll be amazed how big our small car actually is. A clever use of space and ergonomic design means the interior is both practical and stylish, providing plenty of room for both driver and passengers. Thoughtful extra touches such as an abundance of storage compartments, front cup holders, storage nets on the back of the front seats and a height-adjustable driver's seat with a handy drawer beneath, all contribute to a feeling of spaciousness and comfort.

It's more of the same in the back with the Urban Fox, where you'll find the rear seat backrest splits 50:50 if you need to carry extra luggage. Also, the rear bench seat adjusts lengthways so you can transport bulkier items, or folds up completely to give you a maximum boot space of 1,016 litres*. Hardly a small amount by anyone's standard.



01 The dashboard is both well arranged and clearly illuminated.



02 A handy drawer beneath the driver's seat means everything is easily within reach.



03 Optional 'Climatic' semi-automatic air conditioning provides year round comfort.



04 Total flexibility: rear seats split symmetrically for extra luggage space, standard on Urban Fox...



05 ...adjust lengthways to accommodate bulky items or fold up completely to optimise the boot space, achieving a maximum volume of 1,016 cubic litres*.

*VDA measuring method using 200 x 100 x 50 mm blocks.



Want to add your own touch? There's no reason why you can't.

With its stylish looks, strong build and low starting price, we think the Fox is about as perfect as a car gets. However, we understand that you may want to add a few personal touches of your very own.

That's why we have a number of accessory options available for you – whether it's simply improving your Fox's already good looks or protecting it outside and in.



01-03 Protection pack comes complete with shaped-to-fit, wear resistant, front and rear carpet mats, plus hard-wearing and durable mudflaps that minimise damage from road chippings and spray. There's also a flexible loadliner which ensures that the boot of your Fox remains in tip-top condition.



04 Style pack – 1 gives you the chance to increase the sporty, elegant looks of your Fox by adding a set of 14" 'Vitus' alloy wheels.



04-05 Style pack – 2 enables you to not only upgrade to 14" 'Vitus' alloy wheels, but also have a slender rear roof spoiler fitted to your Fox to personalise it even further.



06 Touring safety pack provides a first aid kit which is vital in the event of an accident.



07 Rear parking sensors pack is designed to help make sure that nothing spoils the good looks of your Fox. When reversing, an audible warning will sound more frequently the closer you get to an obstacle.

Optional equipment.

Safety equipment

Additional safety equipment, ensuring maximum levels of protection, is available, including side airbags, front fog lights and the Electronic Stabilisation Programme (ESP). Optional on both models.

Winter pack

This pack offers comfort and safety during the coldest months. The Winter pack includes heated front seats and heated windscreen washer jets. Optional on both models.

Colour pack

The colour pack includes body-coloured bumpers and door mirror housings giving a more dynamic and sporty appearance. Optional on Fox and standard on Urban Fox.

Luxury packs

Luxury pack – 1 includes remote central locking, front electric windows with convenience control (opens and shuts windows with one touch) and electrically heated and adjustable door mirrors.

In addition, **Luxury pack – 2** provides an alarm system with an interior monitoring facility and a front reading light. Luxury packs 1 and 2 are optional on both models.



01 Model shown is Urban Fox with optional Black paint and 15" 'Mendoza' alloy wheels and front fog lights.

02 Remote central locking is available as an option on Fox and standard on Urban Fox.

03 The front electric windows with convenience control. Optional on Fox and standard on Urban Fox.

04 Electrically heated and adjustable door mirrors. Optional on both models.



05 The alarm with interior protection has a monitor that detects movement in the car and, if appropriate, triggers the alarm. Optional on both models.



06 A handy reading light, for the driver and front seat passenger, is conveniently located in the front. Optional on both models.



07 Side airbags for driver and front passenger provide additional safety. Optional on both models.



08 The front fog lights provide better vision in poor weather. Optional on both models.



09 The Electronic Stabilisation Programme (ESP) reacts to critical driving situations within milliseconds. Optional on both models.

Air conditioning

The easiest way to regulate the interior temperature in the Fox is with 'Climatic' semi-automatic air conditioning, enabling you to select exactly the required temperature, optional on both models. For fresh air enthusiasts, an electric glass sunroof is available on both models, and manually adjustable rear vent windows are optional on Fox and standard on Urban Fox.

'Vario Plus' pack

This includes symmetrically split folding backrest, sliding and fully folding up rear seats, providing many flexible options for using the boot space. Easy entry front sliding seats for access to the rear seats and manually adjustable rear vent windows are also included. Optional on Fox and standard on Urban Fox.



- 01** The 'Climatic' semi-automatic air conditioning enables you to select your desired temperature. Optional on both models.
- 02** Manually adjustable rear vent windows provide a further source of fresh air. Optional on Fox and standard on Urban Fox.
- 03** Symmetrically split folding rear seat backrest and lengthways adjustable rear bench seat that can fold up fully, provide maximum usage of the boot space. Optional on Fox and standard on Urban Fox.
- 04** The electric glass sunroof operates at the touch of a button. Optional on both models.

Wheels.

14 inch steel wheels with stylish full size wheel trims are standard on all Foxes. Alternatively, if you prefer the look of alloy wheels, two options are available. The 14 inch twin spoke design of the 'Parana' or the clean lines of the 15 inch five spoke 'Mendoza' should present a difficult decision. All alloy wheels are fitted with anti-theft wheel bolts.



- 05** Standard 6J x 14 steel wheels with 185/60 R14 tyres and full size wheel trims.
- 06** Stylish 6J x 14 'Parana' alloy wheels with 185/60 R14 tyres and anti-theft wheel bolts. Optional on both models.
- 07** Sporty 6J x 15 'Mendoza' alloy wheels with 195/55 R15 tyres and anti-theft wheel bolts. Optional on both models.

All that could get in the way of you and a Fox.

You can probably already see yourself in a Fox. After all, it couldn't be easier to own one with the range of finance packages to help you budget and a clear choice of engines, trim levels and accessories. The only thing that could stop you driving one is choosing the colour and upholstery. There are eight exterior colours available, and three different cloths for the seats, so finding the right combination may take some time.

Paint.

Non-Metallic	Sunshine 1T* 	Uranium Grey 5K 	Black A1* 
	Indian Blue F3 	Tornado Red G2 	
Metallic*	Reflex Silver 8E 		
Pearl Effect*	Indigo Blue 7D 	Diamond Black Z4 	

Please note: The print processes do not allow exact reproduction of the paint and upholstery colours.
* Sunshine (1T), Black (A1), metallic and pearl effect paints are optional at extra cost.

Upholstery.

'Stripes' cloth	Coloured BC 	Anthracite CF 
'Honeycomb' cloth	Anthracite FB 	

Combinations.

Seat upholstery	Carpets	Dashboard	Sunshine 1T*	Uranium Grey 5K	Black A1*	Indian Blue F3	Tornado Red G2	Reflex Silver metallic 8E*	Indigo Blue pearl effect 7D*	Diamond Black pearl effect Z4*
'Stripes' ●										
Coloured (BC)	Anthracite	Anthracite/Anthracite	○	●	○	●	●	○	○	○
Anthracite (CF)	Anthracite	Anthracite/Anthracite	○	●	○	●	●	○	○	○
'Honeycomb' ●										
Anthracite (FB)	Anthracite	Anthracite/Anthracite	○	●	○	●	●	○	○	○

● Available ○ Optional at extra cost

* Sunshine (1T), Black (A1), metallic and pearl effect paints are optional at extra cost.



There's nothing stopping you buying a Fox. But there are two engines to get you moving.

The outside isn't the only thing that's compact about the Fox. For the sake of simplicity, we've also purposely kept the number of engines available small. There are just two for you to choose from – a 1.2 litre and a 1.4 litre petrol engine. Both deliver dynamic performance, as well as exceptional fuel consumption. Around town, for instance, the 1.2 litre develops 55 PS but still achieves 46.3 mpg*. And out on the open road, the larger 1.4 litre 16-valve engine, which generates an impressive 75 PS, manages 42.2 mpg*. And it won't cost the earth to insure your Fox – with a Group 1 rating for the 1.2 litre engine and a Group 2 for the 1.4 litre.

But while the Fox may be small on your outgoings, it's big on fun. The five speed manual gearbox fitted to both units, along with the power-assisted steering fitted as standard, makes the Fox easy to drive in town or on the move. The rigid body shell also gives the Fox excellent road-holding and handling abilities.

* See the Engines section for CO₂ emissions and fuel consumption figures.

01 Both petrol engines are available with a five speed manual gearbox.



Technical specification.

		Fox, Urban Fox 1.2 litre 55 PS	Fox, Urban Fox 1.4 litre 75 PS
Engine	Engine type	Three cylinder petrol	Four cylinder petrol
	Cubic capacity, ltrs/cc	1.2/1198	1.4/1390
	Max. output, PS ⁽⁰¹⁾ /kW at rpm	55/40 4750	75/55 5000
	Max. torque, lbs.ft/Nm at rpm	80/108 3000	92/124 2750
	Gearbox	Five speed manual	Five speed manual
Weights, kgs	Unladen weight ⁽⁰²⁾	978	1018
	Gross vehicle weight	1410	1520
	Payload ⁽⁰²⁾	432	502
	Axle load limit: Front	765	830
	Rear	750	790
Trailer load limits, kgs ⁽⁰³⁾	Braked 12% incline	700	800
	Unbraked	520	540
	Towbar load	50	50
	Max. roof load	50	50
Performance	Top speed†, mph (km/h)	92 (148)	104 (167)
	Acceleration, secs 0 - 62 mph	17.5	13.0
	ABI insurance group	1	2
Environmental information	Fuel grade, minimum	Unleaded, 95 RON ⁽⁰⁴⁾	Unleaded, 95 RON ⁽⁰⁴⁾
	Fuel tank capacity, galls/ltrs	10.9/50	10.9/50
	Official fuel consumption mpg/ltr per 100 km ⁽⁰⁵⁾		
	Urban	37.2/7.6	32.5/8.7
	Extra-urban	54.3/5.2	50.4/5.6
	Combined	46.3/6.1	42.2/6.7
	Official CO ₂ emission, g/km ⁽⁰⁶⁾	144	159
	Emission class	EURO 4	EURO 4
Noise, dB	72	72	

† Where the law permits.

Exterior dimensions		
Length, mm	3828	
Width – excluding door mirrors, mm	1660	
Width – opened front doors, mm	3838	
Height, mm	1544	
Height – opened bonnet/floor, mm	1786	
Height – opened tailgate/floor, mm	2105	
Wheelbase, mm	2465	

Technical specification notes.

- The maximum power output figures are quoted in PS (or Pferdestärke, which is the metric equivalent of horsepower). To convert from metric to imperial horsepower, divide the PS figure by 1.0139.
- Figures are calculated in accordance with manufacturer's criteria. Vehicle unladen weight ranges with 90% tank capacity without driver (75 kg). The individual unladen weight depends on the specification of the vehicle, this then reduces the possible payload accordingly.
- With increasing altitude the engine performance diminishes. From 1,000 m above sea level and for every 1,000 m thereafter 10% of the vehicle/trailer weight (trailer weight + gross vehicle weight) must be deducted.
- Thanks to the knock control, unleaded four star (at least 95 RON) can be used instead of Super plus unleaded.
- Official fuel consumption according to EU Directive 99/94. The consumption calculation according to 1999/100/EC is based on the actual unladen weight of the vehicle. Additional specifications can lead to a higher weight class and hence to consumption figures of this higher weight class. The driving style, road and traffic conditions, environmental influences and vehicle condition can in practice lead to consumption figures, which may differ from those calculated with this standard.
- The weight of a vehicle will influence the level of CO₂ emission it produces; as a result, vehicles with higher levels of specification and factory-fitted options may emit higher levels of CO₂.

The technology.

Engines

- Front transversely-mounted engine.
- 1.2 litre/55 PS ⁽⁰¹⁾ (40 kW) petrol engine.
Three cylinder in-line engine, cast iron cylinder block, alloy cylinder head with single overhead camshaft, two valves per cylinder.
- 1.4 litre/75 PS ⁽⁰¹⁾ (55 kW) petrol engine.
Four cylinder in-line engine, cast iron cylinder block, alloy cylinder head with double overhead camshaft, four valves per cylinder.

Transmission

- Front-wheel drive
- Five speed manual gearbox: All models

Running gear

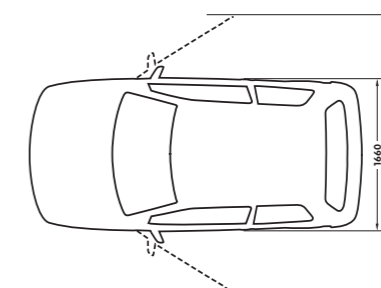
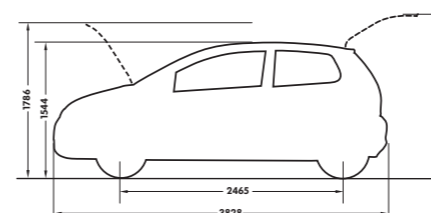
- Front axle: Independent with McPherson struts and coil springs
- Rear axle: Torsion beam with trailing arms

Steering

- Power-assisted rack and pinion

Brake system

- 1.2 litre 55 PS petrol engine
- 1.4 litre 75 PS petrol engine
Servo assisted, diagonally split circuit with ABS
Front: Ventilated discs
Rear: Self-adjusting drums



All figures in millimetres.

Volkswagen service for your peace of mind.

The Volkswagen Warranty.

Three-year Warranty.

All Volkswagen Foxes come with a three-year/60,000 miles warranty, which protects your car against the failure of most mechanical and electrical components due to manufacturing defects. This comprises a two-year manufacturer's warranty with unlimited mileage plus a further one-year/60,000 miles (whichever is soonest) Retailer Warranty. Should the mileage exceed 60,000 miles within the first two years, the manufacturer's two-year warranty will still be valid. If an additional warranty for subsequent years or higher mileage is desired, it may be purchased from an authorised Volkswagen retailer or repairer; however, this additional warranty must be purchased before the mileage reaches 60,000*. Full details of the three-year warranty are available from your authorised Volkswagen retailer or repairer.

*All warranty work must be completed by an authorised Volkswagen retailer or repairer.

Three-year Paint Warranty.

The paintwork of the Fox is covered against manufacturing defects for a period of three years. Naturally, the Fox must be cared for in compliance with the operating instructions which will be found in your vehicle handbook. Please consult your authorised Volkswagen retailer or repairer for full warranty details.

12-year Body Protection Warranty.

The internal body sections and panels of the Fox are covered against rusting through from the inside for 12 years. Naturally, the Fox must be cared for in compliance with the operating instructions. Please consult your authorised Volkswagen retailer or repairer for full warranty details.

Service Intervals.

The Fox is set to the Time and Distance Service.

The service intervals are as follows:

- Oil change service Every 10,000 miles/1 year (whichever is soonest).
- Inspection service Every 20,000 miles/2 years (whichever is soonest).

Please consult your authorised Volkswagen retailer or repairer for advice and full details.

Approved Accessories.

A comprehensive range of accessories from alloy wheels to carpet mats is available to complement the factory-fitted option list. Volkswagen Approved accessories purchased from and fitted by your authorised Volkswagen retailer at the point of vehicle sale will also benefit from the three-year vehicle warranty.

Volkswagen Finance†.

Volkswagen Finance specialises in providing funding solutions for Volkswagen drivers. Whether your Volkswagen is for private or business use, you can choose from a range of funding options.

- Solutions – a personal contract plan
- Hire purchase
- Lease purchase
- Finance lease
- Contract hire

With all Volkswagen Finance products you can choose a fixed-cost maintenance plan to help you budget for your servicing and maintenance costs.

No matter what finance product you choose, your local Volkswagen retailer will be able to provide you with a personalised quote that could meet your budget and vehicle needs.

† Volkswagen Finance is a trading name of Volkswagen Financial Services (UK) Limited. An offer of finance depends on certain conditions. Available to people over 18 in the UK only.

Extended Warranty.

You may purchase additional protection from your authorised Volkswagen retailer or repairer, or contact 0870 9000 115.

Volkswagen Insurance±.

Competitive and comprehensive motor insurance designed especially for Volkswagen drivers. All new and Approved Used Volkswagens come with complimentary seven-day cover upon request – we'll e-mail a cover note straight to your retailer, enabling them to tax your car easily. This way, you can drive straight out of the showroom. Taking out annual cover is easy and it can start when the seven-day cover expires. For more information contact your local Volkswagen retailer or call 0800 051 3136.

± Volkswagen Insurance is underwritten and administered by Zurich Insurance plc. Volkswagen Insurance is a trading name of Volkswagen Insurance Service (Great Britain) Limited which is an appointed representative of Volkswagen Financial Services (UK) Limited. Zurich Insurance plc and Volkswagen Financial Services (UK) Limited are both authorised and regulated by the Financial Services Authority.

Volkswagen Roadside Assistance.

Every new car is registered for Volkswagen Roadside Assistance for one year. This provides vehicle home and roadside recovery in the unlikely event of a breakdown in the UK and Europe (subject to conditions). Volkswagen Roadside Assistance can also be purchased for subsequent years. For full details, please contact your authorised Volkswagen retailer or repairer.

Tax Free Sales.

For full details, please contact your authorised Volkswagen retailer.

CO₂ Emission.

Increased weight of a vehicle, including higher trim levels and the addition of options will have a detrimental influence on the level of fuel consumption and CO₂ emissions produced.

The CO₂ and fuel consumption figures are obtained from tests on a representative vehicle of the type, conducted and approved in accordance with Council Directive 80/1268/EEC as amended by Directive 1999/100/EC (or later) on the approximation of the laws of the member states relating to the carbon dioxide emissions and the fuel consumption of motor vehicles.

Please Note: Some illustrations in this brochure do not necessarily reflect UK specifications and may not be available. In particular, controls and some items of equipment are positioned differently for the UK.

The specifications contained in this brochure are for information purposes only and are subject to change. If you require any specific feature, you must consult your authorised Volkswagen retailer who is regularly updated with any change in specification. Please check model availability and full specification details with your authorised Volkswagen retailer prior to ordering.

Note: We would like to advise you that telephone calls to Volkswagen Customer Care may be monitored and recorded as part of our training and quality assurance processes. All our monitoring and recording processes meet Ofcom regulations.