



Das Auto.

The new Golf GTI



Breathtaking. Quite simply, more charismatic, more stylish and more exhilarating than ever before.




Model shown is new Golf GTI with optional 18" 'Monza Shadow' alloy wheels.

Iconic: how better to describe the new Golf GTI?
More technologically advanced, more exciting and
more desirable.



Model shown is new Golf GTI with optional 18" 'Monza Shadow' alloy wheels.



Luxurious. Take a seat, you'll know instantly that this is a car that's made for you.

Interior shown is new Golf GTI DSG with optional 'Vienna' leather upholstery and DVD touch-screen navigation/radio system.

Inspirational. A pioneer in every sense, offering new levels of efficiency, unprecedented performance and higher safety standards.



Model shown is new Golf GTI.

Equipment

The new Golf GTI is the definitive sports performer. Its crisp lines, aerodynamic shape and sporty styling give it an inspirational character, the finest in a proud history of iconic GTIs. From its unique front grille and deep front spoiler, to its distinctive alloy wheels and chrome exhaust tailpipes, the new Golf GTI will steal your heart the moment you set eyes on it.



The front of the new Golf GTI is more stylish than ever, featuring its renowned black honeycomb grille, traditional red louvres stripes and gleaming chrome GTI badge. The honeycomb structure is echoed in the front air intake, while the body-coloured front spoiler completes the impressive front design.



Standard 7½J x 17 'Monza' alloy wheels with 225/45 R17 low profile tyres give the new Golf GTI its purposeful image, the distinctive five spoke design revealing the red brake calipers beneath.



Optional 'Monza Shadow' 7½J x 18 alloy wheels with 225/40 R18 tyres combine sportiness with a hint of elegance. The surrounds of the five spokes are painted black, presenting the red brake calipers to optimal effect.

Standard Optional at extra cost



At the rear, neatly integrated into either side of the black rear diffuser, the chrome exhaust tailpipes hint at the power beneath the bonnet, visually emphasising the excellent roadholding of the new GTI, with its wide stance providing a sporty touch that can be seen as well as heard.



The interior specification of the new Golf GTI is designed to transform the sporty driving experience with new levels of comfort and functionality. From the stylish chrome finish of the rotary light switches, 'Edge' decorative inserts and red stitching on the sports leather steering wheel, handbrake and gear knob gaiter, the interior aesthetics are breathtaking. And to ensure maximum comfort on longer journeys, such as front sports seats with height and lumbar adjustment, front centre armrest and a load-through facility in the rear are all fitted as standard. As is the RCD 310 radio/MP3 compatible CD player including AUX-in socket for connection to an external multimedia source (e.g. iPod and MP3 player) and 2Zone electronic climate control air conditioning with automatic air recirculation function.

■ Standard ■ Optional at extra cost



The body-coloured rear spoiler highlights the dynamic shape of the GTI's sporting body, while ensuring even better roadholding.



Clear and precise adjustable white instrument lighting with atmospheric red illumination design on all dials provides an air of exclusivity throughout the GTI's interior.



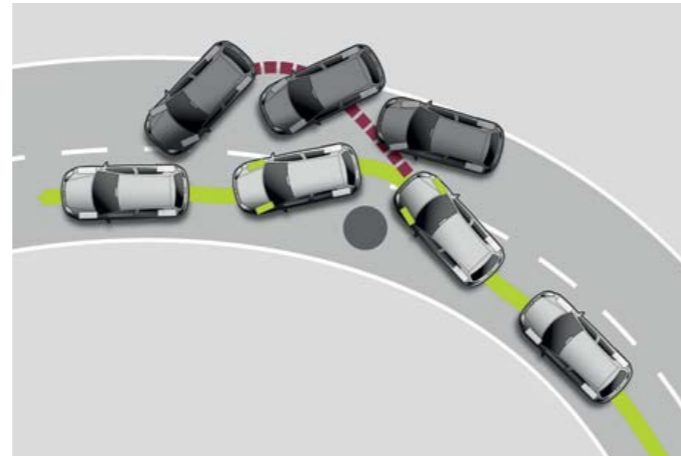
The 'Cherry red' rear light clusters flow smoothly into the dynamic contours of the new Golf GTI, complementing its striking rear design.



'Edge' decorative inserts feature on the dashboard and door trims, enhancing the premium sports interior of the new Golf GTI.



The six speed manual gearbox transmits engine power with short, accurate shifts and very smooth handling. Finished in aluminium, black and red, the gear knob is particularly stylish.



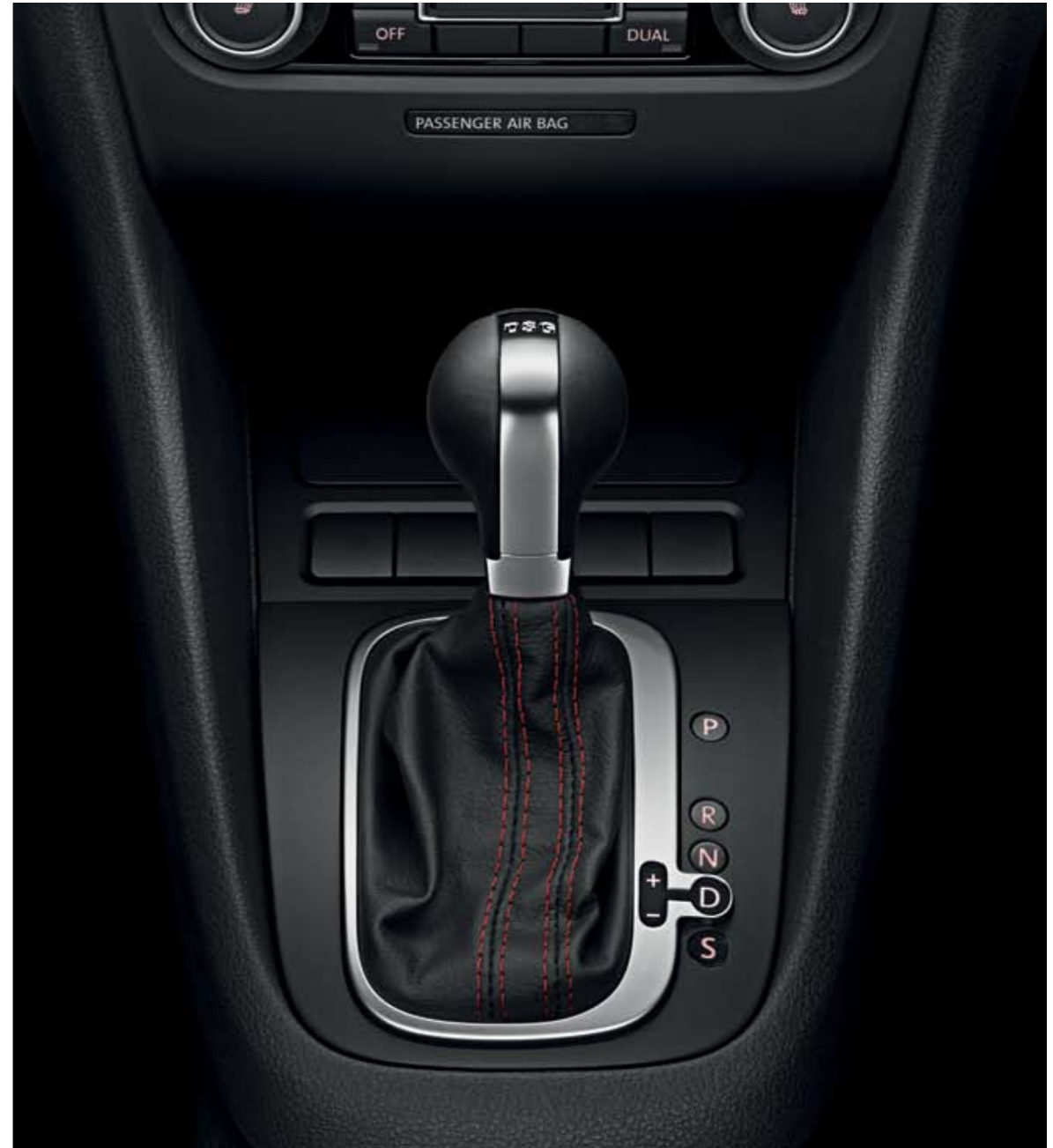
The **Electronic Stabilisation Programme (ESP)** recognises critical driving situations in milliseconds, and by targeting the brake and management systems, controls the speed of individual wheels, helping to keep the vehicle under control. This gives the vehicle maximum directional stability.



A combination of direct fuel injection and intelligent turbocharging technology ensures the **2.0 litre TSI 210 PS petrol engine** delivers high performance and torque, alongside impressive fuel consumption.



For the first time, the new Golf GTI features **XDS**, an extension of the well-known electronic differential lock (EDL) function. This is linked to the Electronic Stabilisation Programme (ESP) hydraulics and works by applying pressure to the inner front wheel during fast cornering to prevent spinning. The one-sided, precise brake pressure helps to maximise traction, reduce understeer and improve responses, thus making cornering even more sporty, safe and accurate.



The **dual clutch Direct Shift Gearbox (DSG)** represents a milestone in the development of the latest gearbox technology. This innovative automatic transmission shifts smoothly and imperceptibly into the pre-selected next gear within a split second – such extremely short reaction times and direct response behaviour make sporty accelerating even more fun. Not only is the six speed gearbox very dynamic, its level of efficiency is almost as economical as its manual counterpart.

■ Standard ■ Optional at extra cost



In an emergency, both driver and passengers can rely on the **comprehensive airbag system**. This includes driver and front passenger airbags, with a front passenger airbag deactivation switch, a driver's knee airbag for added protection, and a curtain airbag system with side impact airbags for the front seats. Deployment of the airbags is activated by crash sensors: when an impact is registered, the airbag control unit ignites the gas generator, which fills then inflates the airbag within 30 to 40 milliseconds, helping to reduce injuries significantly.

Image shown is for illustration purposes only and may not necessarily reflect UK specification.

Standard Optional at extra cost



The optional **Adaptive Chassis Control (ACC)** adapts the damping control and shock absorption rate to the road conditions and driving style you require within milliseconds. At the touch of a button, you decide how firm or comfortable you wish to set the suspension, with a choice of three settings: Normal, Comfort or Sport. In Normal mode, the principal advantage of the system is that the dampers are constantly adjusted to the road and the driving conditions. In Sport mode, the dampers are considerably stiffer and the steering becomes more responsive. A direct contrast is Comfort mode where the suspension is adjusted to maximise passenger comfort, particularly when travelling on poor road surfaces or long motorway journeys.

Image shown is for illustration purposes only and may not necessarily reflect UK specification.



Integrated fog lights with chrome surround are a sporty feature of the new Golf GTI's redesigned front, and are essential in helping to improve vision in fog, snow and heavy rain when visibility is poor.



The optional **rear seat side airbag system** not only protects rear seat passengers, but includes an optical warning informing the driver when rear seat occupants have not fastened their seat belts or have not fastened them correctly.

Rear seat side airbag system is only available on five-door models.



In the event of a change in air pressure, the optional **flat tyre indicator** symbol appears in the multifunction display, advising the driver to rectify the situation.



The **Multi Device Interface (MDI)** with iPod and USB cables enables you to connect and charge a compatible device, while track selection is viewed and selected via the vehicle's radio system.



The **RCD 310 radio/MP3 compatible CD player** features eight speakers with an output of 4 x 20 watts and its large screen clearly displays radio station choices or the track listings of a compatible device connected to the Multi Device Interface (MDI).

■ Standard ■ Optional at extra cost



The **multifunction leather steering wheel** enables you to operate the radio system and multifunction computer without taking your hands off the wheel. When used in conjunction with the Direct Shift Gearbox (DSG), the gears can be changed easily from the steering wheel, using easy-grip paddles.



Aluminium-look pedals, with an anti-slip covering, add a sporty touch to the front footwell, while enhancing safety and performance.

DSG shown.



The 'Highline' multifunction computer with additional vehicle set-up function provides important information while you are driving, including average speed and fuel consumption, exterior temperature, range of the fuel tank and destination of the optional DVD navigation/radio system.

Standard Optional at extra cost



The Convenience pack comprises front footwell illumination, an automatic coming/leaving home lighting function, ensuring your surroundings are well lit for additional security. The dusk sensor activates the vehicle's headlights when natural light levels diminish (i.e. night driving and underground car parks), while the automatically dimming interior rear-view mirror and rain sensor provide extra safety and comfort.



The electric mirror adjustment switch surround is chrome-plated to provide a stylish look.



The newly designed 2Zone electronic climate control with automatic air recirculation system features dual zone temperature control for the driver and front passenger, enabling each to select their individually preferred temperature.

Interior shown features optional RCD 510 touch-screen radio system and Winter pack.



The ergonomically designed chrome-plated light switch surround combines function with aesthetics perfectly.



The optional RCD 510 touch-screen radio/dash-mounted MP3 compatible six CD autochanger features a large 6½ inch colour display, with intuitive menu navigation and touch-screen operation. It also features an AUX-in socket for connection to an external multimedia source (e.g. iPod or MP3 player) and an SD memory card slot.



The optional DVD touch-screen navigation/radio system will guide you to your destination using all but the last two digits of a UK postcode and includes a 6½ inch colour display. It also plays DVDs (when the vehicle is stationary) and music from the DVD drive, 30 GB hard drive or via an SD card.



Another option for your RCD 310 or optional RCD 510 is a DAB digital radio receiver (in lieu of MDI), enabling you to listen to all the digital stations available in crystal clear digital sound.

* Cannot be specified in conjunction with rear-view camera or DVD touch-screen navigation/radio system.



Available in conjunction with the optional RCD 510 or DVD navigation/radio system, the 'Dynaudio' soundpack offers phenomenal sound, delivering 300 watts through eight high performance speakers, perfectly distributing acoustics throughout the vehicle.



At speeds of over 19 mph, optional cruise control keeps your selected speed constant, enabling you to relax on longer journeys, without having to keep an eye on your speedometer.

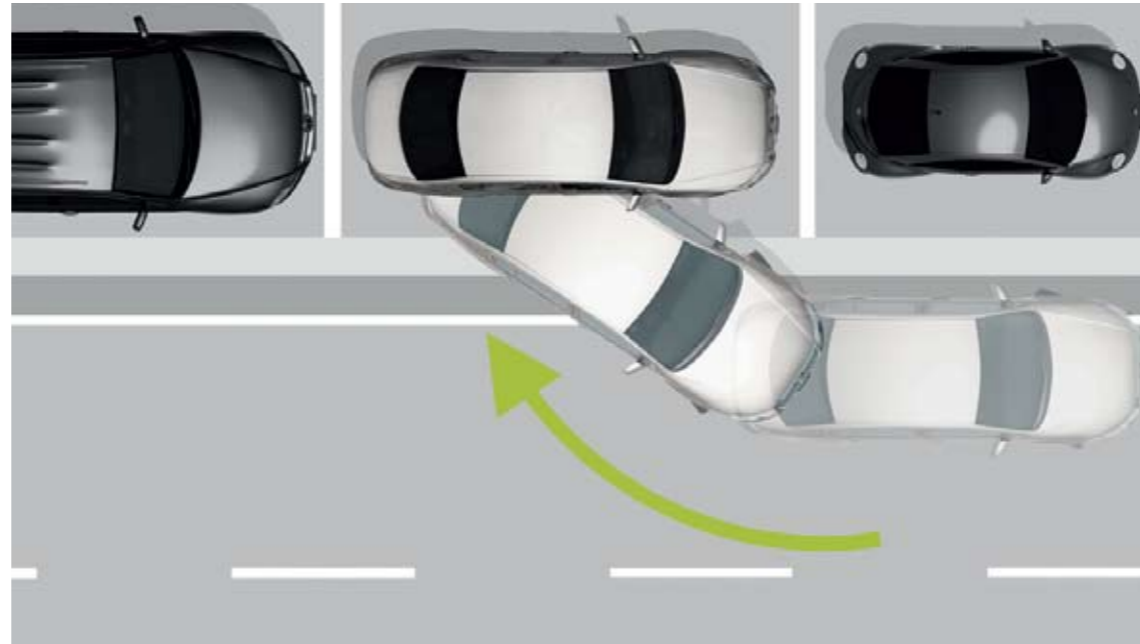
Standard Optional at extra cost



An optional rear-view camera, integrated behind the Volkswagen badge on the rear tailgate of the new Golf GTI, provides a clear view to the rear of your vehicle, transmitting an undistorted live image to your radio or navigation system display, enabling you to manoeuvre quickly and easily into the most difficult parking space.

Must be ordered in conjunction with RCD 510 or DVD touch-screen navigation/radio systems.

Standard Optional at extra cost



When driving past a parking space at up to 19 mph, the optional **Park Assist system** with ultrasonic front and rear parking sensors, compares the space available with the length of the new Golf GTI. If the space is suitable, the Park Assist parallel parking assistant automatically controls the steering as soon as you engage reverse gear. All you have to do is operate the accelerator, clutch and brake, while keeping a good lookout. **Parking sensors** also assist in less challenging parking manoeuvres by emitting both audible and visual signals, alerting the driver to any obstacles in the way: the closer you are to an obstacle the faster the sound frequency. In addition an **Optical Parking Display** extends the functions of the parking sensors by indicating your position, either in monochrome on RCD 310 or colour on optional RCD 510 and DVD navigation/radio system, on the vehicle's audio display during parking.



Useful **headlight washers** form part of the optional Winter pack, which also includes heated front seats, heated windscreen washer jets and a warning light to show if the windscreen washer level is low.



The optional **electric glass sunroof** is just as eye-catching from the outside as it is from the inside. Adding light and space, it fills the interior with additional natural light, providing an uninterrupted view of the sky overhead.

Paint



■ Standard ■ Optional at extra cost

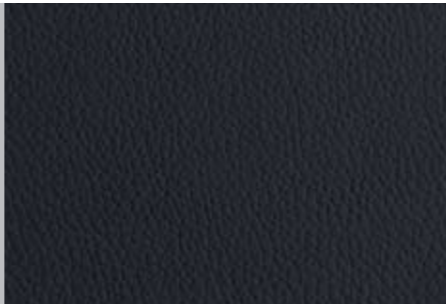
Please note: Screen technology does not allow for exact reproduction of the paint colours.

Upholstery

Black/Red
'Jacara' cloth
 XE



Black
'Vienna' leather †
 QW



Standard Optional at extra cost



Combinations

Seat upholstery	Carpets	Dashboard	Black A1	Candy White B4	Tornado Red G2	Carbon Grey metallic 1K*	Reflex Silver metallic 8E*	Shadow Blue metallic P6*	Steel Grey metallic X6*	Deep Black pearl effect 2T*	Blue Graphite pearl effect W9*
'Jacara' cloth Black/Red (XE)	Black	Titan Black	●	●	●	●	●	●	●	●	●
'Vienna' leather * † Black (QW)	Black	Titan Black	○	○	○	○	○	○	○	○	○

● Available ○ Optional at extra cost – Not available
 * Metallic and pearl effect paints and 'Vienna' leather upholstery are optional at extra cost. † Some parts of leather interior will contain artificial leather.

Classic and durable 'Vienna' leather in Black.

Some parts of leather interior will contain artificial leather.

Please note: Screen technology does not allow for exact reproduction of the upholstery colours.

GTI – 2.0 litre TSI 210 PS
Technical specification

		Manual	Automatic DSG
Engine	Engine type	Four cylinder petrol	Four cylinder petrol
	Cubic capacity, ltrs/cc	2.0/1984	2.0/1984
	Max. output, PS ⁽⁰¹⁾ /kW at rpm	210/155 5300-6200	210/155 5300-6200
	Max. torque, lbs.ft/Nm at rpm	206/280 1750-5200	206/280 1750-5200
	Gearbox	Six speed manual	Six speed auto DSG
Weights, kgs	Unladen weight ⁽⁰²⁾	1318	1339
	Gross vehicle weight	1870	1890
	Payload ⁽⁰²⁾	552	551
	Axle load limit: Front Rear	1040 880	1060 880
Trailer load limits, kgs ⁽⁰³⁾	Braked 12% incline	1400	1400
	Unbraked	690	700
	Towbar load limit	75	75
	Max. roof load	75	75
Performance	Top speed (where the law permits), mph (km/h)	149 (240)	147 (238)
	Acceleration, secs 0 - 62 mph	6.9	6.9
	ABI insurance group	TBA	TBA
Environmental information	Fuel grade, minimum	Petrol ⁽⁰⁴⁾	Petrol ⁽⁰⁴⁾
	Fuel tank capacity, galls/ltrs	12.1/55	12.1/55
	Official fuel consumption, mpg/ltr per 100 km ⁽⁰⁵⁾		
	Urban	28.2/10.0	28.2/10.0
	Extra-urban	48.7/5.8	47.9/5.9
	Combined	38.7/7.3	38.2/7.4
	Official CO ₂ emission, g/km ⁽⁰⁶⁾	170	173
Emission class	EURO 5	EURO 5	
Noise, dB	75.0	74.0	

Notes.

- 01) The maximum power output figures are quoted in PS (or Pferdestärke, which is the metric equivalent of horsepower). To convert from metric to imperial horsepower, divide the PS figure by 1.0139.
- 02) Figures are calculated in accordance with manufacturer's criteria. The individual unladen weight depends on the specification of the vehicle, this then reduces the possible payload accordingly.
- 03) With increasing altitude the engine performance diminishes. From 1,000 m above sea level and for every 1,000 m thereafter 10% of the vehicle/trailer weight (trailer weight + gross vehicle weight) must be deducted.
- 04) Thanks to the knock control, unleaded four star (at least 95 RON) can be used instead of unleaded Super plus. In order to achieve maximum fuel consumption benefits on the TSI engine, Ultra Low Sulphur Petrol (ULSP) must be used.
- 05) Official fuel consumption according to EU Directive 99/94. The consumption calculation according to 1999/100/EC is based on the actual unladen weight of the vehicle. Additional specifications can lead to a higher weight class and hence to consumption figures of this higher weight class. The driving style, road and traffic conditions, environmental influences and vehicle condition can in practice lead to consumption figures, which may differ from those calculated with this standard.
- 06) The weight of a vehicle will influence the level of CO₂ emission it produces; as a result, vehicles with higher levels of specification and factory-fitted options may emit higher levels of CO₂.

Technology

Engines

- Front transverse-installed engine
- 2.0 litre/210 PS⁽⁰¹⁾ (155 kW) petrol engine: four cylinder in-line engine, aluminium cylinder head, four valves per cylinder with roller rocker finger valve drive, electronic direct injection, variable inlet valve timing, programmed ignition with cylinder-selective anti-knock control, four single spark ignition coils, longlife spark plugs, exhaust gas turbocharger, three-way close-coupled pre-catalyst and underbody catalyst, lambda control

Transmission

- Front wheel drive through asbestos-free single-plate dry clutch. Hydraulic clutch-mechanism. Six speed manual or six speed automatic DSG gearbox with double joint half axles
- Six speed manual: 2.0 litre TSI 210 PS
- Six speed automatic DSG: 2.0 litre TSI 210 PS

Steering

- Electro-mechanical steering rack
- Collapsible, height and lengthways adjustable safety steering column

Brakes

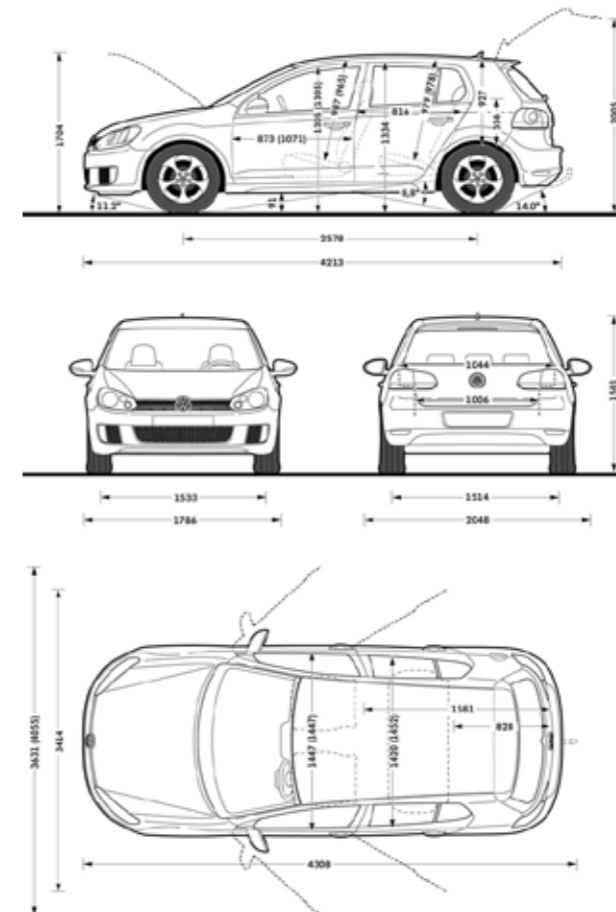
- Electronically controlled Anti-lock Braking System (ABS) with Electronic Brake-pressure Distribution (EBD)
- Diagonal twin-circuit brake system with front and rear disc brakes (front ventilated)
- Asbestos-free brake pads
- Hydraulic Brake Assist (HBA)

Running gear

- Electronic Stabilisation Programme (ESP) including Electronic Differential Lock (EDL), Traction Control (ASR) and Countersteer Support and XDS electronic differential lock
- Front suspension through coil springs with telescopic shock absorbers, all elements integrated in chassis legs
- Rear suspension with gas pressure shock absorbers and separate springs
- Wheel control: front through chassis legs and (lower) triangular wishbones (directionally stabilising steering roll radius)
- Wheel control: rear through four-link suspension with independent wheel suspension
- Front and rear anti-roll bar

Dimensions

Maximum luggage capacity, litres VDA measuring method using 200 x 100 x 50 mm blocks	With rear seat upright	350
	With rear seat folded	1305
Exterior dimensions	Length, mm	4213
	Width – excluding door mirrors, mm	1786
	Width – opened front doors – 3 door/5 door, mm	4055/3631
	Height, mm	1501
	Height – opened bonnet/floor, mm	1704
	Height – opened tailgate/floor, mm	2005
	Wheelbase, mm	2578
Turning circle, mm	10900	
Interior dimensions	Effective headroom – front, mm (with sunroof)	987 (965)
	Effective headroom – rear, mm (with sunroof)	979 (978)
	Elbow width, front – 3 door/5 door, mm	1447/1447
	Elbow width, rear – 3 door/5 door, mm	1452/1420



Volkswagen service

The Volkswagen Warranty.

Three-year Warranty.

All Volkswagen new Golf GTIs come with a three-year/60,000 miles warranty, which protects your car against the failure of most mechanical and electrical components due to manufacturing defects. This comprises a two-year manufacturer's warranty with unlimited mileage plus a further one-year/60,000 miles (whichever is soonest) Retailer Warranty. Should the mileage exceed 60,000 miles within the first two years, the manufacturer's two-year warranty will still be valid. If an additional warranty for subsequent years or higher mileage is desired, it may be purchased from an authorised Volkswagen retailer or repairer; however, this additional warranty must be purchased before the mileage reaches 60,000*. Full details of the three-year warranty are available from your authorised Volkswagen retailer or repairer.

* All warranty work must be completed by an authorised Volkswagen retailer or repairer.

Three-year Paint Warranty.

The paintwork of the new Golf GTI is covered against manufacturing defects for a period of three years. Naturally, the new Golf GTI must be cared for in compliance with the operating instructions which will be found in your vehicle handbook. Please consult your authorised Volkswagen retailer or repairer for full warranty details.

12-year Body Protection Warranty.

The internal body sections and panels of the new Golf GTI are covered against rusting through from the inside for 12 years. Naturally, the new Golf GTI must be cared for in compliance with the operating instructions. Please consult your authorised Volkswagen retailer or repairer for full warranty details.

Approved Accessories.

A comprehensive range of accessories from alloy wheels to carpet mats is available to complement the factory-fitted option list. Volkswagen approved accessories purchased from and fitted by your authorised Volkswagen retailer at the point of vehicle sale will also benefit from the three-year vehicle warranty.

Service Intervals.

Volkswagen are pleased to offer you a choice on how your new Golf GTI is serviced. The appropriate selection is entirely dependent on how the car is likely to be driven and its general use. To help you identify which type of service would be most suitable, please refer to the following guide.

The Time and Distance Service is recommended for vehicles that will cover less than 10,000 miles in 12 months and if the vehicle is likely to be used in the following way:

- Predominantly urban driving, short journeys with frequent cold starts.
- Activities regularly producing high engine loading, e.g. frequent hill climbs, driving with vehicle fully loaded and towing.
- Uneconomical driving style using high rpms with heavy acceleration and heavy braking.

The service intervals for the Time and Distance Service are as follows:

- Oil change service
Every 10,000 miles/1 year (whichever is soonest).
- Interval service
Every 20,000 miles/2 years (whichever is soonest).
- Inspection service
Every 40,000 miles/3 years (whichever is soonest).

The LongLife Service is recommended for vehicles with a daily mileage of more than 25 miles where the vehicle is driven regularly mainly on longer distance journeys. The vehicle is driven mainly at a constant speed with minimum vehicle and engine loading, minimal towing and driven in an economical manner.

With the LongLife Service the vehicle can cover anywhere between 10,000[†] and a maximum of 18,000[†] miles or 24 months (whichever is soonest) between oil changes. Inspection service is typically in the third year of ownership and thereafter every second year, for vehicles with an approximate annual mileage of 10,000 miles.

[†] Please note that mileages are approximate as the service indicator system uses kilometres as the distance measurement. Please consult your authorised Volkswagen retailer or repairer for advice and full details.

Extended Warranty.

You may purchase additional protection from your authorised Volkswagen retailer or repairer, or contact 0870 9000 115.

Volkswagen Finance[‡].

Volkswagen Finance specialises in providing funding solutions for Volkswagen drivers. Whether your Volkswagen is for private or business use, you can choose from a range of funding options.

- Solutions – a personal contract plan
- Hire purchase
- Lease purchase
- Finance lease
- Contract hire

With all Volkswagen Finance products you can choose a fixed-cost maintenance plan to help you budget for your servicing and maintenance costs.

No matter what finance product you choose, your local Volkswagen retailer will be able to provide you with a personalised quote that could meet your budget and vehicle needs.

[‡] Volkswagen Finance is a trading name of Volkswagen Financial Services (UK) Limited. An offer of finance depends on certain conditions. Available to people over 18 in the UK only.

Volkswagen Insurance[±].

Competitive and comprehensive motor insurance designed especially for Volkswagen drivers. All new and Approved Used Volkswagens come with complimentary seven-day cover upon request – we'll e-mail a cover note straight to your retailer, enabling them to tax your car easily. This way, you can drive straight out of the showroom. Taking out annual cover is easy and it can start when the seven-day cover expires. For more information contact your local Volkswagen retailer or call 0800 051 3136.

[±] Volkswagen Insurance is underwritten and administered by Zurich Insurance plc. Volkswagen Insurance is a trading name of Volkswagen Insurance Service (Great Britain) Limited which is an appointed representative of Volkswagen Financial Services (UK) Limited. Zurich Insurance plc and Volkswagen Financial Services (UK) Limited are both authorised and regulated by the Financial Services Authority.

Volkswagen Roadside Assistance.

Every new car is registered for Volkswagen Roadside Assistance for one year. This provides vehicle home and roadside recovery in the unlikely event of a breakdown in the UK and Europe (subject to conditions). Volkswagen Roadside Assistance can also be purchased for subsequent years. For full details, please contact your authorised Volkswagen retailer or repairer.

Tax Free Sales.

For full details, please contact your authorised Volkswagen retailer.

CO₂ Emission.

Increased weight of a vehicle, including higher trim levels and the addition of options will have a detrimental influence on the level of fuel consumption and CO₂ emissions produced.

The CO₂ and fuel consumption figures are obtained from tests on a representative vehicle of the type, conducted and approved in accordance with Council Directive 80/1268/EEC as amended by Directive 1999/100/EC (or later) on the approximation of the laws of the member states relating to the carbon dioxide emissions and the fuel consumption of motor vehicles.

Please Note:

Some illustrations in this brochure do not necessarily reflect UK specifications and may not be available. In particular, controls and some items of equipment are positioned differently for the UK.

The specifications contained in this brochure are for information purposes only and are subject to change. If you require any specific feature, you must consult your authorised Volkswagen retailer who is regularly updated with any change in specification. Please check model availability and full specification details with your authorised Volkswagen retailer prior to ordering.

Note: We would like to advise you that telephone calls to Volkswagen Customer Care may be monitored and recorded as part of our training and quality assurance processes. All our monitoring and recording processes meet Ofcom regulations.