



Das Auto.

The Passat Estate



Design.



As soon as you set eyes on the Passat Estate, size and space will take on a new meaning. Combining the practicalities of an estate with the elegance of a saloon, this exceptional car delivers power and charisma more successfully than ever before. From the very first glance, the Passat Estate makes a definitive statement, its wide track width and low-set front end producing a striking appearance, giving a hint of the driving pleasure to come. The gleaming chrome-plated radiator grille surround, a real design highlight, reinforces the story. The rounded in-set headlights add an extra touch of style, echoed through its flowing aerodynamic curves and rear light cluster incorporating LED technology. This is a car designed to command attention and get results. Inside, the promise of the exterior is realised, with innovative design delivering new levels of functionality. Nowhere is this more apparent than in the boot space, where stowage capacity is increased to an impressive 1,641* litres (1,626* litres on R36 models), with the rear seats folded down.



As with any estate, flexibility and versatility are paramount, and here the Passat Estate excels, with a number of different options providing a wealth of practical solutions. For example, the optional cargo management system allows you to organise the load area with maximum efficiency, using an adjustable securing rail and retractable load securing strap to create areas of varying sizes and stow items safely and securely. So, whether you're looking to transport luggage, snowboards or simply some shopping, you'll find enough space and sufficient fixing solutions to meet all your stowage requirements.



01. Flexible: the rear seat and backrest of the Passat Estate can be folded asymmetrically, extending the loading space to a length of up to 1,956 mm.

02. Versatile: the optional cargo management system features an adjustable securing rail and retractable load securing strap to divide the luggage compartment laterally or diagonally, fastening items securely on both sides.

03. Stylish: the elegant design of the Passat Estate Highline with chrome-plated radiator grille surround. Model shown features optional front fog lights.

04. Harmonious: Elegant design using refined materials, combine to create a luxurious interior.

05. Impressive: An aerodynamic rear tailgate spoiler and striking rear light clusters emphasise the character of the exterior.

06. Reassuring: Every seat is fitted with a head restraint and three-point seat belt, so you can relax whilst feeling both safe and secure.



* Measurement according to ISO 3832 using 200 x 100 x 50 mm blocks, with rear bench folded down and loading to roof (including 90 litres in the stowage space of the spare wheel recess with the Tyre Mobility Set).

Please note Arctic Blue Silver metallic paint is only available from stock and is not available to factory order.

**1,641* litres
stowage capacity.**



Model shown is Highline 2.0 litre TDI with optional pearl effect paint.
* Please note stowage capacity is reduced to 1,626 litres on R36 models.

Interior.



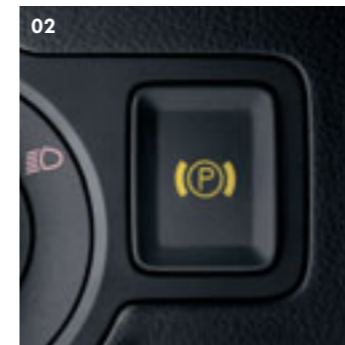
The Passat Estate not only tells a story of exceptional space and load carrying capacity, but also superb ergonomics and interior ambience. Sit in the driving seat and you'll immediately appreciate its intelligent and convenient design, with the clearly arranged instrument panel and easily accessible controls, enhanced by the beautifully co-ordinated, luxurious décor. In such an environment, it's easy to feel good.

Carefully positioned for effortless driving, the electronic parking brake with auto hold function and press and drive key are where you would intuitively expect them, close at hand, with parking and starting operating literally at the touch of a button. For the ultimate in relaxed driving, the cruise control system maintains a preselected speed automatically, without having to use the accelerator – ideal for motorway driving (standard on R Line models and above). And with an abundance of storage space within the doors, roof console and front seat centre armrest (optional on S and BlueMotion 2), there is ample room to store maps, sunglasses, CDs and more.

The story of practicality continues. Thanks to the transversely mounted engine and spacious interior, the Passat Estate also offers plenty of legroom for rear seat passengers. Which means, wherever you are sitting, front or rear, you'll benefit significantly. Never has size been more attractively presented, or aesthetics more practically arranged.

01. High-quality: the luxurious décor and precision workmanship ensure an interior ambience that is both enjoyable and relaxing.

02. Helpful: the electronic parking brake with auto hold function secures the vehicle easily and reliably at the touch of a button. It releases automatically as soon as you pull away, preventing your Passat Estate from rolling back when hill starting.



03. Easy: thanks to the press and drive key, starting has never been simpler.

04. Convenient: the Highline's multifunction steering wheel enables you to select numerous functions without taking your hands from the wheel while driving. The clearly arranged instrument panel and controls are also located directly within your field of vision. Multifunction steering wheels are standard on R Line, Highline and R36 models.



05. Relaxing: the cruise control system, which is standard on all models except S, makes driving even more enjoyable. Speed is automatically controlled, over 19 mph, enabling you to take your foot off the accelerator and relax.

06. Functional: the doors can be locked or unlocked in one simple operation and the front electric windows have a handy one-touch opening and closing function for ease of use.



Flexibility.



Model shown is Highline with optional pearl effect paint.



Interior shown is S.

The Passat Estate S and BlueMotion 2.

The Passat Estate S leaves nothing to the imagination, with a wealth of safety features ensuring maximum protection and driving enjoyment. The comprehensive safety package includes such features as an Anti-lock Braking System (ABS), an Electronic Stabilisation Programme (ESP), Traction Control (ASR), speed-sensitive power-assisted steering, driver's and front passenger's WOKS (whiplash-optimised head restraints), and front, side and curtain airbags. Aesthetically too, the Passat Estate S delivers, with an elegance and style that is both understated and assured. Distinctive 'Dark Rhodium' decorative inserts in the dash and centre console, chrome-plated instrument surrounds and stylish 'Calino' cloth upholstery combine to produce an eye-catching image, while 16 inch 'Milwaukee' alloy wheels with 215/55 R16 tyres guarantee dynamic handling and appearance. And demonstrating its immense versatility, black roof rails, storage compartments in the roof console, doors and centre console offer a final touch of practicality.

The Passat Estate S also offers a whole host of standard fittings providing everything you would expect – and more – from an extraordinary car. The front electric windows and electrically heated and adjustable door mirrors provide added convenience, the tailgate unlocks automatically with remote operation and the press and drive key allows you to start the engine simply by pushing the key. In addition, the rear seat backrest with integral centre armrest splits 60:40 allowing it to be folded down in separate sections, ideal if you're loading bulky items, and the four-spoke steering wheel individually adjusts to your optimum driving position. And that's just for starters. Also fitted as standard is a multifunction computer (Midline), electronic parking brake with auto hold function, RCD 310 radio/MP3 compatible CD player with eight speakers and an AUX-in socket for connection to an external multimedia source (e.g. iPod and MP3 player), 'Climatic' semi-automatic air conditioning, alarm with interior protection and remote central locking. As you can see, Volkswagen have thought of everything – all you have to do is concentrate on enjoying the drive.

The BlueMotion 2 Passat Estate builds over the already well equipped Passat Estate S and, in addition, offers impressive environmental credentials by intelligently refining existing technology. Dynamic lines reduce the vehicle's air resistance and, combined with engineering refinements, low rolling resistance tyres and lowered suspension help produce exceptional economy. A Start/Stop function is also fitted in place of the auto hold function – this automatically stops the engine when the vehicle is stationary and restarts it when you pull away, saving fuel and reducing emissions. A combination of all these refinements delivers a package that offers excellent economy up to 57.6 mpg over the Combined fuel cycle*, and the 2.0 litre TDI 110 PS engine with DPF (Diesel Particulate Filter) fitted as standard, ensures CO₂ emissions are from an impressively low 129 g/km.

The BlueMotion 2 Passat Estate adds a higher specification which is evident from its stylish exterior, with 16 inch 'Sarena' alloy wheels with 205/55 R16 low rolling resistance tyres. Internally, for added convenience, there is also cruise control and a multifunction computer (Highline) which includes visual gear change recommendations for optimum fuel consumption.



The RCD 310 radio/MP3 compatible CD player with eight speakers and an AUX-in socket for connection to an external multimedia source (e.g. iPod and MP3 player) will ensure enjoyment on any journey.



The multifunction computer (Highline) includes visual gear change recommendation for optimum fuel consumption. Standard on BlueMotion 2 models.

* Please see the Engines section for fuel consumption and CO₂ emissions figures.



'Monte Carlo' 7½J x 17 alloy wheels with 235/45 R17 tyres create a sporty yet elegant look to the Passat Estate R Line.

The Passat Estate R Line.

If a sleek, sporty look with a whole host of creature comforts is what you want from your Passat Estate then the R Line will exceed your every expectation. While still comprising all of the specification, luxury and practicality of the Passat Estate S, the R Line builds an even more impressive look, both inside and out.

Five-spoke 17 inch 'Monte Carlo' alloy wheels adorn the exterior, along with body-coloured front and rear bumpers, and additional side sills which give the car a real sporting essence. Its distinctive exterior is completed by the front grille surround and the double louvres finished in elegant matt chrome.

Inside, the R Line is a quiet, comfortable and luxurious interior designed to make each journey smooth and relaxing. The leather trimmed three-spoke steering wheel with chrome insert features handy multifunction buttons to control the radio and optional telephone preparation, so everything you need is available at the touch of a button. You can even control the 'Highline' multifunction computer, which offers useful information about your journey such as range, fuel consumption and outside temperature, all without having to take your eyes off the road. Cruise control allows you to select a constant speed over 19 mph, helping you to relax on longer journeys, while the seat height and lumbar adjustment on both front seats enable you to find the optimal position to remain comfortable until you reach your destination. A flat tyre indicator is also included, which will alert you via a warning symbol displayed in the dashboard, while the front centre armrest with two rear air vents, cup holders, storage box and a handy 12V socket in the rear adds an extra touch of comfort.



Interior shown is R Line.



Interior shown is Highline with optional RCD 510 touch-screen radio/MP3 compatible 6 CD autochanger.
* Please note that some parts of leather interior will contain artificial leather.



The newly designed leather trimmed three-spoke multifunction steering wheel allows convenient operation of the radio and multifunction computer (Highline).

The Passat Estate Highline.

The Passat Estate Highline offers the ultimate in comfort and style. Well appointed and beautifully crafted, it offers a host of features designed to ensure total driving pleasure whatever the length of your journey. The 6-way electrically adjustable driver's seat with lumbar support and adjustable backrest guarantees the best possible seating position, while heated front seats with five preset temperature settings and a front centre armrest add an extra touch of luxury. Sumptuous 'Vienna' leather* upholstery is complemented by a leather trimmed gear knob, carpet mats, and matt chrome decorative inserts in the dash and centre console with black or grey upholstery, (or brushed stainless steel decorative inserts with latte or cornsilk beige leather). To ensure stress-free driving, there's a newly designed leather trimmed three-spoke multifunction steering wheel and multifunction computer (Highline), providing essential information as you drive, and to help you relax on longer journeys, cruise control will automatically maintain your desired speed above 19 mph without you having to touch the accelerator pedal.

From the outside, the Highline can be distinguished by its body-coloured front bumper strips, chrome satin side window surrounds, chrome-plated side bump strips and rear strip, while 17 inch 'Macau' alloy wheels with 235/45 R17 tyres add a distinctive finishing touch. With an exceptional specification that even includes a full size alloy spare wheel, what more could you ask for?

Pure sporting prowess.



Model shown is R36 with optional heat insulating tinted glass and pearl effect paint.



Interior shown is R36 with optional RCD 510 touch-screen radio/MP3 compatible 6 CD autochanger, telephone preparation and 'Engine spin' decorative inserts.



Two chrome exhaust tailpipes give the R36 its characteristic rear look, a view generally enjoyed by other drivers.



12-way electrically adjustable sports seats, featuring the 'R36' logo woven into the fabric, offer excellent lateral support and provide total comfort during any journey.

The Passat Estate R36.

Every aspect of the R36's luxurious interior has been modelled to meet the highest expectations. Which means you'll find a level of interior specification that is second to none, including front sports seats with 'R36' logo and electric 12-way adjustment including memory for the driver, offering a perfect lateral fit and enough settings to ensure a seating position tailor-made to your personal measurements. Also included are heated front and outer rear seats, cruise control, front and rear parking sensors, heated windscreen washer jets, electronic tyre pressure monitoring system and a multifunction computer (Highline).

In the cockpit, ergonomic design ensures controls that are clearly arranged and readily to hand, enabling you to achieve maximum performance with the greatest of ease. The three-spoke multifunction leather trimmed steering wheel with 'R36' logo and paddle shift, ensures maximum grip and comfort, while the RCD 310 radio/MP3 compatible CD player with eight speakers and AUX-in socket for connection to external multimedia sources (e.g. iPod and MP3 player) and 2Zone electronic climate control help promote driving pleasure and relaxation. Dark brushed aluminium decorative inserts on the instruments and centre console continues the sporting detail, while aluminium-look pedals featuring the 'R' logo, white illuminated instrument panel and door sill strips in stainless steel with 'R36' logo further enhance the uniquely designed interior.

Visually speaking, the Passat Estate R36 is as near to perfection as you can get. Inspired by the world of motorsport, the R36 exhibits powerful proportions, dynamic design and sleek, aerodynamic styling. The 'R36' logo on the restyled chrome-plated radiator grille, roundel surround and louvres, restyled front air intakes, Bi-Xenon headlights, front spoiler, rear tailgate spoiler and wheel arch extensions create a powerful road presence.

For those who love the thrill of engine power, the R36 will get your pulse racing like never before. A light touch of the accelerator pedal is all that's needed to take the Passat Estate R36 from 0 - 62 mph in just 5.8 seconds. It's all due to the powerful 3.6 litre V6 FSI engine, channelling drive via a six speed Direct Shift Gearbox (DSG) and producing a phenomenal 300 PS and 350 Nm of torque. The sophisticated 4MOTION four wheel drive system diverts every last Nm of torque to the wheel that needs it most, ensuring greater traction and impressive handling. Combined with sports suspension lowered by 25 mm, 18 inch 'Omanyt' alloys, front and rear disc brakes (ventilated at the front) and a dynamic bodyshape, it produces a level of performance that's nothing short of mind-blowing. All together it adds up to one undisputed fact – the R36 is the fastest Passat Estate on the road today. Isn't it time you discovered the ultimate adrenaline rush? Sit in the R36 and you'll see life from a different perspective, where only the best is good enough. Would you expect anything less?

Versatility.



Model shown is S with optional metallic paint.
Please note Arctic Blue Silver metallic paint is only available from stock and is not available to factory order.

[Design](#) | [Interior](#) | [Models](#) | **[Engines](#)** | [Safety](#) | [Colours & Upholstery](#) | [Equipment](#) | [Wheels](#) | [Service](#)

[Overview](#) | [1.4 ltr TSI 122 PS](#) | [1.8 ltr TSI 160 PS](#) | [3.6 ltr FSI V6 4MOTION 300 PS](#)

[2.0 ltr TDI 110 PS](#) | [2.0 ltr TDI 140 PS](#) | [2.0 ltr TDI 170 PS](#) | [Technology](#) | [Dimensions](#)

[Print](#) | [Exit](#) | [◀](#) [▶](#)

Engines.



01. The DSG gearbox offers a genuine alternative to a manual gearbox because it is able to change gear faster than a manual gearbox and more smoothly than a conventional automatic.



02. Volkswagen's technologically advanced TSI engines combine excellent driveability with impressive fuel economy.



03. Diesel engines with the latest technology deliver outstanding performance with exceptionally low fuel consumption.

Every journey is a special experience in the Passat Estate, thanks to Volkswagen's superb range of economical, high-torque petrol and diesel engines, all designed to make driving pure pleasure. The three petrol variants benefit from direct injection technology, where the fuel is injected into the combustion chamber under high pressure, resulting in impressive performance even at low revs. The first variant is a powerful four cylinder 1.4 litre TSI engine developing 122 PS which utilises a sophisticated turbocharger, resulting in impressive output with a smaller engine size. This engine can reach 124 mph, where the law permits, and is capable of achieving a fuel consumption figure of 42.2 mpg on the Combined fuel cycle*. The second engine available for the Passat Estate is a 1.8 litre engine, again incorporating TSI technology developing a healthy 160 PS. When specified with the six speed manual gearbox, it can accelerate the Passat Estate to 62 mph in 8.8 seconds. yet is still capable of 36.2 mpg on the Combined fuel cycle*. You could also opt for the Volkswagen's innovative seven speed DSG gearbox, which combines the sportiness of a manual with the comfort of an automatic, characterised by its smooth gearshifts with no traction interruption. Finally, for the ultimate experience, the 3.6 litre FSI V6 4MOTION 300 PS engine, fitted exclusively to the R36, is sure to get your pulse racing as it accelerates from 0 - 62 mph in just 5.8 seconds on its way to a top speed of 155 mph (restricted), where the law permits.

The three diesel variants are particularly sophisticated, mainly in terms of flexibility and fuel economy. Featuring the latest common rail technology, these engines not only ensure excellent performance and fuel consumption but are also incredibly quiet. First is the four cylinder 2.0 litre TDI engine with a five speed gearbox, developing 110 PS and 250 Nm of torque from just 1,500 rpm. Like most Passat Estates, it has a 70 litre fuel tank (68 litres on R36 models), and achieves 50.4 mpg on the Combined fuel cycle*. This engine, in conjunction with the BlueMotion 2 Passat Estate, is capable of a top speed of 122 mph where the law permits, produces a mere 129 g/km of CO₂ yet can still achieve 57.6 mpg on the Combined fuel cycle* – a benefit that will make your next journey even more pleasurable. BlueMotion 2 models also benefit from an engine Start/Stop function (in lieu of auto hold). When coming to a stop at traffic lights for example, you simply depress the clutch and select neutral – when the clutch is released the engine switches off and a 'Start/Stop' symbol illuminates on the multifunction display. In order to drive away you simply depress the clutch once again to select first gear and the engine restarts automatically. This innovative feature is just one of the many ways of contributing to the BlueMotion 2's excellent environmental credentials.

The second diesel option, the powerful 2.0 litre TDI 140 PS engine, is available with either a six speed manual gearbox or six speed automatic DSG gearbox. With the manual gearbox, this engine can deliver 320 Nm from just 1,750 rpm while returning a miserly 49.6 mpg on the Combined fuel cycle*.

Finally, the equally impressive 2.0 litre TDI 170 PS can accelerate the Passat Estate from 0 - 62 mph in just 8.8 seconds yet is capable of returning an impressive fuel consumption figure of 49.6 mpg on the Combined fuel cycle* – creating a fine balance of performance and efficiency. It is no slouch either, with a top speed of 137 mph where the law permits.

As part of Volkswagen's continued desire to satisfy European emissions legislation, all Passat Estate diesel engines are now fitted with a Diesel Particulate Filter (DPF) as standard. This is part of the exhaust system responsible for cleaning the exhaust gases before they enter the atmosphere. In addition to converting the harmful exhaust gases in the same way as a conventional catalytic converter, the DPF uses advanced technology to reduce the emission of black smoke and soot. It filters the exhaust gases and particles before they leave the vehicle exhaust system, resulting in a cleaner environment and less pollution entering the atmosphere.

Please note, driving conditions within inner-cities and the Channel Islands may not provide optimum conditions for the use of DPF technology. Therefore, it is advised that you consider this before ordering a vehicle with DPF.

* Please see the Engines section for fuel consumption and CO₂ emissions figures.

S, R Line – 1.4 litre TSI 122 PS.

Technical specification.

		Manual	
Engine	Engine type	Four cylinder petrol	
	Cubic capacity, ltrs/cc	1.4/1390	
	Max. output, PS ⁽⁰¹⁾ /kW at rpm	122/90 5000	
	Max. torque, lbs.ft/Nm at rpm	154/210 1500	
	Gearbox	Six speed manual	
Weights, kgs	Unladen weight ⁽⁰²⁾	1429	
	Gross vehicle weight	2080	
	Payload ⁽⁰²⁾	651	
	Axle load limit: Front Rear	1050 1080	
Trailer load limits, kgs ⁽⁰³⁾	Braked 12% incline	1400	
	Unbraked	720	
	Towbar load limit	90	
	Max. roof load	100	
Performance	Top speed (where the law permits), mph (km/h)	124 (200)	
	Acceleration, secs 0 - 62 mph	10.8	
	ABI insurance group, 1 - 20 (1 - 50) [†]	8E (16E), TBA (TBA)	
Environmental information	Fuel grade, minimum	Unleaded, 95 RON ⁽⁰⁴⁾	
	Fuel tank capacity, galls/ltrs	15.4/70	
	Official fuel consumption, mpg/ltr per 100 km ⁽⁰⁵⁾		
	Urban	32.8/8.6	
	Extra-urban	50.4/5.6	
	Combined	42.2/6.7	
	Official CO ₂ emission, g/km ⁽⁰⁶⁾	159	
	Emission class	EURO 4	
Noise, dB	72.0		

† Please note, from December 2009 the insurance industry will switch from the current rating system of groups 1 - 20 to a new 1 - 50 insurance scale.

Notes.

- 01) The maximum power output figures are quoted in PS (or Pferdestärke, which is the metric equivalent of horsepower). To convert from metric to imperial horsepower, divide the PS figure by 1.0139.
- 02) Figures are calculated in accordance with manufacturer's criteria. The individual unladen weight depends on the specification of the vehicle, this then reduces the possible payload accordingly.
- 03) With increasing altitude the engine performance diminishes. From 1,000 m above sea level and for every 1,000 m thereafter 10% of the vehicle/trailer weight (trailer weight + gross vehicle weight) must be deducted.
- 04) Thanks to the knock control, unleaded four star (at least 95 RON) can be used instead of unleaded Super plus. In order to achieve maximum fuel consumption benefits on the FSI engine, Ultra Low Sulphur Petrol (ULSP) must be used.
- 05) Official fuel consumption according to EU Directive 99/94. The consumption calculation according to 1999/100/EC is based on the actual unladen weight of the vehicle. Additional specifications can lead to a higher weight class and hence to consumption figures of this higher weight class. The driving style, road and traffic conditions, environmental influences and vehicle condition can in practice lead to consumption figures, which may differ from those calculated with this standard.
- 06) The weight of a vehicle will influence the level of CO₂ emission it produces; as a result, vehicles with higher levels of specification and factory-fitted options may emit higher levels of CO₂.
- 07) The use of RME and FAME (bio diesel) is not possible.

St, R Linet, Highline – 1.8 litre TSI 160 PS.

Technical specification.

		Manual	Automatic
Engine	Engine type	Four cylinder petrol	Four cylinder petrol
	Cubic capacity, ltrs/cc	1.8/1798	1.8/1798
	Max. output, PS ⁽⁰¹⁾ /kW at rpm	160/118 5000	160/118 5000
	Max. torque, lbs.ft/Nm at rpm	185/250 1500	185/250 1500
	Gearbox	Six speed manual	Seven speed auto DSG [†]
Weights, kgs	Unladen weight ⁽⁰²⁾	1459	1481
	Gross vehicle weight	2130	2150
	Payload ⁽⁰²⁾	671	669
	Axle load limit: Front Rear	1080 1100	1100 1100
Trailer load limits, kgs ⁽⁰³⁾	Braked 12% incline	1500	1500
	Unbraked	750	750
	Towbar load limit	90	90
	Max. roof load	100	100
Performance	Top speed (where the law permits), mph (km/h)	135 (217)	132 (212)
	Acceleration, secs 0 - 62 mph	8.8	9.0
	ABI insurance group, 1 - 20 (1 - 50) [‡]	13E (21E), TBA (TBA), 13E (21E)	13E (21E)
Environmental information	Fuel grade, minimum	Unleaded, 95 RON ⁽⁰⁴⁾	Unleaded, 95 RON ⁽⁰⁴⁾
	Fuel tank capacity, galls/ltrs	15.4/70	15.4/70
	Official fuel consumption, mpg/ltr per 100 km ⁽⁰⁵⁾		
	Urban	26.6/10.6	28.5/9.9
	Extra-urban	45.6/6.2	46.3/6.1
	Combined	36.2/7.8	37.7/7.5
	Official CO ₂ emission, g/km ⁽⁰⁶⁾	186	178
	Emission class	EURO 4	EURO 4
Noise, dB	71.0	70.0	

† Seven speed auto DSG gearbox not available on these models.

‡ Please note, from December 2009 the insurance industry will switch from the current rating system of groups 1 - 20 to a new 1 - 50 insurance scale.

Notes.

- 01) The maximum power output figures are quoted in PS (or Pferdestärke, which is the metric equivalent of horsepower). To convert from metric to imperial horsepower, divide the PS figure by 1.0139.
- 02) Figures are calculated in accordance with manufacturer's criteria. The individual unladen weight depends on the specification of the vehicle, this then reduces the possible payload accordingly.
- 03) With increasing altitude the engine performance diminishes. From 1,000 m above sea level and for every 1,000 m thereafter 10% of the vehicle/trailer weight (trailer weight + gross vehicle weight) must be deducted.
- 04) Thanks to the knock control, unleaded four star (at least 95 RON) can be used instead of unleaded Super plus. In order to achieve maximum fuel consumption benefits on the FSI engine, Ultra Low Sulphur Petrol (ULSP) must be used.
- 05) Official fuel consumption according to EU Directive 99/94. The consumption calculation according to 1999/100/EC is based on the actual unladen weight of the vehicle. Additional specifications can lead to a higher weight class and hence to consumption figures of this higher weight class. The driving style, road and traffic conditions, environmental influences and vehicle condition can in practice lead to consumption figures, which may differ from those calculated with this standard.
- 06) The weight of a vehicle will influence the level of CO₂ emission it produces; as a result, vehicles with higher levels of specification and factory-fitted options may emit higher levels of CO₂.
- 07) The use of RME and FAME (bio diesel) is not possible.

R36 – 3.6 litre FSI V6 4MOTION 300 PS.

Technical specification.

		Automatic	
Engine	Engine type	Six cylinder petrol	
	Cubic capacity, ltrs/cc	3.6/3597	
	Max. output, PS ⁽⁰¹⁾ /kW at rpm	300/220 6600	
	Max. torque, lbs.ft/Nm at rpm	258/350 2400	
	Gearbox	Six speed auto DSG	
Weights, kgs	Unladen weight ⁽⁰²⁾	1747	
	Gross vehicle weight	2350	
	Payload ⁽⁰²⁾	603	
	Axle load limit: Front Rear	1170 1230	
Trailer load limits, kgs ⁽⁰³⁾	Braked 12% incline	2200	
	Unbraked	750	
	Towbar load limit	90	
	Max. roof load	100	
Performance	Top speed (where the law permits), mph (km/h)	155 (250)	
	Acceleration, secs 0 - 62 mph	5.8	
	ABI insurance group, 1 - 20 (1 - 50) [†]	18E (36E)	
Environmental information	Fuel grade, minimum	Unleaded, 95 RON ⁽⁰⁴⁾	
	Fuel tank capacity, galls/ltrs	15.0/68	
	Official fuel consumption, mpg/ltr per 100 km ⁽⁰⁵⁾		
	Urban	21.9/12.9	
	Extra-urban	34.9/8.1	
	Combined	28.5/9.9	
	Official CO ₂ emission, g/km ⁽⁰⁶⁾	229	
	Emission class	EURO 4	
Noise, dB	73.0		

Notes.

- 01) The maximum power output figures are quoted in PS (or Pferdestärke, which is the metric equivalent of horsepower). To convert from metric to imperial horsepower, divide the PS figure by 1.0139.
- 02) Figures are calculated in accordance with manufacturer's criteria. The individual unladen weight depends on the specification of the vehicle, this then reduces the possible payload accordingly.
- 03) With increasing altitude the engine performance diminishes. From 1,000 m above sea level and for every 1,000 m thereafter 10% of the vehicle/trailer weight (trailer weight + gross vehicle weight) must be deducted.
- 04) Thanks to the knock control, unleaded four star (at least 95 RON) can be used instead of unleaded Super plus. In order to achieve maximum fuel consumption benefits on the FSI engine, Ultra Low Sulphur Petrol (ULSP) must be used.
- 05) Official fuel consumption according to EU Directive 99/94. The consumption calculation according to 1999/100/EC is based on the actual unladen weight of the vehicle. Additional specifications can lead to a higher weight class and hence to consumption figures of this higher weight class. The driving style, road and traffic conditions, environmental influences and vehicle condition can in practice lead to consumption figures, which may differ from those calculated with this standard.
- 06) The weight of a vehicle will influence the level of CO₂ emission it produces; as a result, vehicles with higher levels of specification and factory-fitted options may emit higher levels of CO₂.
- 07) The use of RME and FAME (bio diesel) is not possible.

† Please note, from December 2009 the insurance industry will switch from the current rating system of groups 1 - 20 to a new 1 - 50 insurance scale.

S, R Line, Highline, BlueMotion 2 – 2.0 litre TDI 110 PS.

Technical specification.

		S, R Line, Highline	BlueMotion 2
Engine	Engine type	Four cylinder diesel	Four cylinder diesel
	Cubic capacity, ltrs/cc	2.0/1968	2.0/1968
	Max. output, PS ⁽⁰¹⁾ /kW at rpm	110/81 4200	110/81 4200
	Max. torque, lbs.ft/Nm at rpm	184/250 1500	184/250 1500
	Gearbox	Five speed manual	Five speed manual
Weights, kgs	Unladen weight ⁽⁰²⁾	1482	1468
	Gross vehicle weight	2160	2070
	Payload ⁽⁰²⁾	678	602
	Axle load limit: Front Rear	1110 1110	1080 1040
Trailer load limits, kgs ⁽⁰³⁾	Braked 12% incline	1500	1200
	Unbraked	750	750
	Towbar load limit	90	90
	Max. roof load	100	100
Performance	Top speed (where the law permits), mph (km/h)	118 (190)	122 (196)
	Acceleration, secs 0 - 62 mph	12.0	11.9
	ABI insurance group, 1 - 20 (1 - 50) [†]	8E (16E), TBA (TBA), 8E (16E)	8E (16E)
Environmental information	Fuel grade, minimum	Diesel DPF ⁽⁰⁷⁾	Diesel DPF ⁽⁰⁷⁾
	Fuel tank capacity, galls/ltrs	15.4/70	15.4/70
	Official fuel consumption, mpg/ltr per 100 km ⁽⁰⁵⁾		
	Urban	39.8/7.1	44.8/6.3
	Extra-urban	60.1/4.7	68.9/4.1
	Combined	50.4/5.6	57.6/4.9
	Official CO ₂ emission, g/km ⁽⁰⁶⁾	146	129
	Emission class	EURO 5	EURO 5
Noise, dB	71.0	71.0	

† Please note, from December 2009 the insurance industry will switch from the current rating system of groups 1 - 20 to a new 1 - 50 insurance scale.

Notes.

- 01) The maximum power output figures are quoted in PS (or Pferdestärke, which is the metric equivalent of horsepower). To convert from metric to imperial horsepower, divide the PS figure by 1.0139.
- 02) Figures are calculated in accordance with manufacturer's criteria. The individual unladen weight depends on the specification of the vehicle, this then reduces the possible payload accordingly.
- 03) With increasing altitude the engine performance diminishes. From 1,000 m above sea level and for every 1,000 m thereafter 10% of the vehicle/trailer weight (trailer weight + gross vehicle weight) must be deducted.
- 04) Thanks to the knock control, unleaded four star (at least 95 RON) can be used instead of unleaded Super plus. In order to achieve maximum fuel consumption benefits on the FSI engine, Ultra Low Sulphur Petrol (ULSP) must be used.
- 05) Official fuel consumption according to EU Directive 99/94. The consumption calculation according to 1999/100/EC is based on the actual unladen weight of the vehicle. Additional specifications can lead to a higher weight class and hence to consumption figures of this higher weight class. The driving style, road and traffic conditions, environmental influences and vehicle condition can in practice lead to consumption figures, which may differ from those calculated with this standard.
- 06) The weight of a vehicle will influence the level of CO₂ emission it produces; as a result, vehicles with higher levels of specification and factory-fitted options may emit higher levels of CO₂.
- 07) The use of RME and FAME (bio diesel) is not possible.

S, R Line, Highline – 2.0 litre TDI 140 PS.

Technical specification.

		Manual	Automatic
Engine	Engine type	Four cylinder diesel	Four cylinder diesel
	Cubic capacity, ltrs/cc	2.0/1968	2.0/1968
	Max. output, PS ⁽⁰¹⁾ /kW at rpm	140/103 4200	140/103 4200
	Max. torque, lbs.ft/Nm at rpm	236/320 1750	236/320 1750
	Gearbox	Six speed manual	Six speed auto DSG
Weights, kgs	Unladen weight ⁽⁰²⁾	1497	1519
	Gross vehicle weight	2170	2190
	Payload ⁽⁰²⁾	673	671
	Axle load limit: Front Rear	1120 1110	1140 1110
Trailer load limits, kgs ⁽⁰³⁾	Braked 12% incline	1800	1800
	Unbraked	750	750
	Towbar load limit	90	90
	Max. roof load	100	100
Performance	Top speed (where the law permits), mph (km/h)	128 (206)	126 (203)
	Acceleration, secs 0 - 62 mph	10.1	10.1
	ABI insurance group, 1 - 20 (1 - 50) [†]	10E (20E), TBA (TBA), 10E (20E)	10E (20E), TBA (TBA), 10E (20E)
Environmental information	Fuel grade, minimum	Diesel DPF ⁽⁰⁷⁾	Diesel DPF ⁽⁰⁷⁾
	Fuel tank capacity, galls/ltrs	15.4/70	15.4/70
	Official fuel consumption, mpg/ltr per 100 km ⁽⁰⁵⁾		
	Urban	38.7/7.3	35.8/7.9
	Extra-urban	60.1/4.7	56.5/5.0
	Combined	49.6/5.7	46.3/6.1
	Official CO ₂ emission, g/km ⁽⁰⁶⁾	148	159
Emission class	EURO 5	EURO 5	
Noise, dB	70.0	68.0	

† Please note, from December 2009 the insurance industry will switch from the current rating system of groups 1 - 20 to a new 1 - 50 insurance scale.

Notes.

- 01) The maximum power output figures are quoted in PS (or Pferdestärke, which is the metric equivalent of horsepower). To convert from metric to imperial horsepower, divide the PS figure by 1.0139.
- 02) Figures are calculated in accordance with manufacturer's criteria. The individual unladen weight depends on the specification of the vehicle, this then reduces the possible payload accordingly.
- 03) With increasing altitude the engine performance diminishes. From 1,000 m above sea level and for every 1,000 m thereafter 10% of the vehicle/trailer weight (trailer weight + gross vehicle weight) must be deducted.
- 04) Thanks to the knock control, unleaded four star (at least 95 RON) can be used instead of unleaded Super plus. In order to achieve maximum fuel consumption benefits on the FSI engine, Ultra Low Sulphur Petrol (ULSP) must be used.
- 05) Official fuel consumption according to EU Directive 99/94. The consumption calculation according to 1999/100/EC is based on the actual unladen weight of the vehicle. Additional specifications can lead to a higher weight class and hence to consumption figures of this higher weight class. The driving style, road and traffic conditions, environmental influences and vehicle condition can in practice lead to consumption figures, which may differ from those calculated with this standard.
- 06) The weight of a vehicle will influence the level of CO₂ emission it produces; as a result, vehicles with higher levels of specification and factory-fitted options may emit higher levels of CO₂.
- 07) The use of RME and FAME (bio diesel) is not possible.

Highline – 2.0 litre TDI 170 PS.

Technical specification.

		Manual	Automatic
Engine	Engine type	Four cylinder diesel	Four cylinder diesel
	Cubic capacity, ltrs/cc	2.0/1968	2.0/1968
	Max. output, PS ⁽⁰¹⁾ /kW at rpm	170/125 4200	170/125 4200
	Max. torque, lbs.ft/Nm at rpm	258/350 1750	258/350 1750
	Gearbox	Six speed manual	Six speed auto DSG
Weights, kgs	Unladen weight ⁽⁰²⁾	1499	1521
	Gross vehicle weight	2170	2190
	Payload ⁽⁰²⁾	671	669
	Axle load limit: Front Rear	1100 1090	1130 1090
Trailer load limits, kgs ⁽⁰³⁾	Braked 12% incline	1800	1800
	Unbraked	750	750
	Towbar load limit	90	90
	Max. roof load	100	100
Performance	Top speed (where the law permits), mph (km/h)	137 (220)	135 (217)
	Acceleration, secs 0 - 62 mph	8.8	8.8
	ABI insurance group, 1 - 20 (1 - 50) [†]	13E (24E)	13E (24E)
Environmental information	Fuel grade, minimum	Diesel DPF ⁽⁰⁷⁾	Diesel DPF ⁽⁰⁷⁾
	Fuel tank capacity, galls/ltrs	15.4/70	15.4/70
	Official fuel consumption, mpg/ltr per 100 km ⁽⁰⁵⁾		
	Urban	38.2/7.4	35.3/8.0
	Extra-urban	60.1/4.7	54.3/5.2
	Combined	49.6/5.7	45.6/6.2
	Official CO ₂ emission, g/km ⁽⁰⁶⁾	149	163
	Emission class	EURO 5	EURO 5
Noise, dB	73.0	69.0	

Notes.

- 01) The maximum power output figures are quoted in PS (or Pferdestärke, which is the metric equivalent of horsepower). To convert from metric to imperial horsepower, divide the PS figure by 1.0139.
- 02) Figures are calculated in accordance with manufacturer's criteria. The individual unladen weight depends on the specification of the vehicle, this then reduces the possible payload accordingly.
- 03) With increasing altitude the engine performance diminishes. From 1,000 m above sea level and for every 1,000 m thereafter 10% of the vehicle/trailer weight (trailer weight + gross vehicle weight) must be deducted.
- 04) Thanks to the knock control, unleaded four star (at least 95 RON) can be used instead of unleaded Super plus. In order to achieve maximum fuel consumption benefits on the FSI engine, Ultra Low Sulphur Petrol (ULSP) must be used.
- 05) Official fuel consumption according to EU Directive 99/94. The consumption calculation according to 1999/100/EC is based on the actual unladen weight of the vehicle. Additional specifications can lead to a higher weight class and hence to consumption figures of this higher weight class. The driving style, road and traffic conditions, environmental influences and vehicle condition can in practice lead to consumption figures, which may differ from those calculated with this standard.
- 06) The weight of a vehicle will influence the level of CO₂ emission it produces; as a result, vehicles with higher levels of specification and factory-fitted options may emit higher levels of CO₂.
- 07) The use of RME and FAME (bio diesel) is not possible.

The technology.

Transmission

- Front wheel drive through asbestos-free single-plate dry clutch. Hydraulic clutch-mechanism. Five/six speed manual or six/seven speed auto DSG gearbox with double joint half axles
- Four wheel drive (R36 only) with electronically controlled multi-plate clutch. Electronic differential lock, combined with a hydraulically operated single-plate dry clutch with asbestos-free lining via a six speed auto DSG gearbox
- Five speed manual: 2.0 litre TDI 110 PS
- Six speed manual: 1.4 litre TSI 122 PS, 1.8 litre TSI 160 PS, 2.0 litre TDI 140 PS, 2.0 litre TDI 170 PS
- Six speed auto DSG: 3.6 litre FSI V6 4MOTION 300 PS, 2.0 litre TDI 140 PS, 2.0 litre TDI 170 PS
- Seven speed auto DSG: 1.8 litre TSI 160 PS

Running gear

- Electronic Stabilisation Programme (ESP) including Electronic Differential Lock (EDL), Traction Control (ASR) and Countersteer Support
- Front suspension through coil springs with telescopic shock absorbers, all elements integrated in chassis legs
- Rear suspension with gas pressure shock absorbers and separate springs
- Wheel control: front through chassis legs and (lower) triangular wishbones (directionally stabilising steering roll radius)
- Wheel control: rear through four-link suspension with independent wheel suspension
- Front and rear anti-roll bar

Brakes

- Electronically controlled Anti-lock Braking System (ABS) with Electronic Brake-pressure Distribution (EBD)
- Diagonal twin-circuit brake system with inner-ventilated front disc brakes and rear disc brakes
- Asbestos-free brake pads
- Hydraulic Brake Assist (HBA)
- Electronic park brake

Steering

- Electro-mechanical steering rack
- Collapsible, height and lengthways adjustable safety steering column

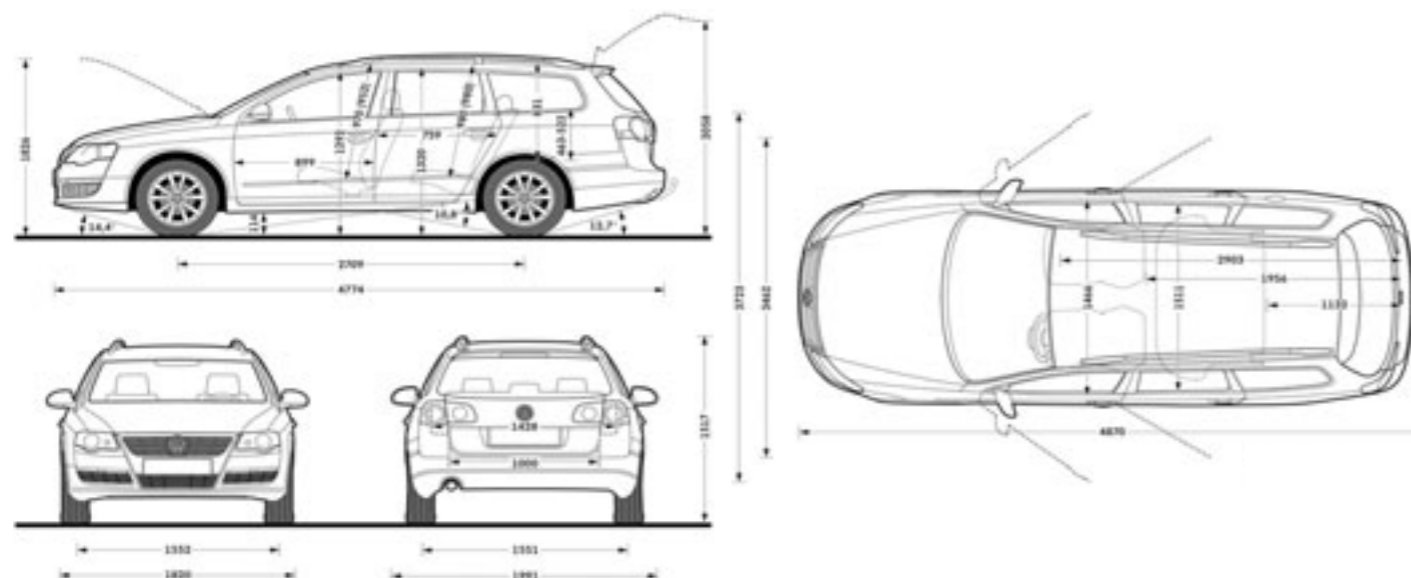
Engines

- Front transverse-installed engine
- 1.4 litre/122 PS⁽⁰¹⁾ (90 kW) petrol engine: CAXA TSI engine with homogeneous mode (Lambda 1), stratified high-pressure start, double injection catalytic converter heating, turbocharger with waste gate, air-to-liquid charge-air cooling, maintenance-free timing chain, plastic intake manifold with integrated intercooler, continuous inlet camshaft timing adjustment, grey cast iron cylinder block, steel crankshaft, duo-centric oil pump, dual-circuit cooling system. Fuel system regulated according to requirements using high-pressure fuel pump with integrated pressure limiting valve
- 1.8 litre/160 PS⁽⁰¹⁾ (118 kW) petrol engine: four cylinder in-line engine, four valves per cylinder, four-stroke turbocharged petrol engine, cast iron cylinder crankcase with balancer shafts, steel crankshaft and internal oil pump – chain driven by the crankshaft, timing gear chain and chain driven mass balancer at the front end of the engine, four valve cylinder head, one intake camshaft adjuster, intake manifold with tumble flap, demand controlled fuel supply on low and high pressure ends, multi-port high pressure injector, MED 17 engine control unit, hot-film digital air mass meter with integral temperature sensor, throttle valve with contactless sensor, map-controlled ignition with cylinder selective, digital knock control and single spark ignition coils, integral exhaust turbocharger, charge-air cooler, boost pressure control with overpressure and electrical wastegate valve, single chamber exhaust system with close-coupled pre-catalyst, no ‘continuous’ pre-catalyst oxygen sensor in the EU4, direct injection, homogeneous combustion process
- 3.6 litre/300 PS⁽⁰¹⁾ (220 kW) petrol engine: six cylinder transverse engine in ‘V’ format, aluminium cylinder head, four valves per cylinder with roller rocker valve lever drive, electronic indirect injection, six single spark ignition coils, lambda control
- 2.0 litre/110 PS⁽⁰¹⁾ (81 kW) common rail diesel engine: EU5 emissions standard, four cylinder in-line engine, four valves per cylinder, aluminium-silicon alloy cylinder head, reduced piston crown volume (improves swirl generation in the cylinder), toothed backlash compensator, intake manifold with electric continual tumble flap control, electronically controlled common rail direct injection fuel system with Bosch high pressure pump (up to 1800 bar) and 8-hole piezo injector units, pre-supply electronic fuel pump, oil cooler, intercooler, low temperature exhaust gas recirculation, additional coolant pump, turbocharger with variable turbine geometry, catalytic converter and Diesel Particulate Filter (DPF)
- 2.0 litre/140 PS⁽⁰¹⁾ (103 kW) common rail diesel engine: EU5 emissions standard, four cylinder in-line engine, four valves per cylinder, aluminium-silicon alloy cylinder head, reduced piston crown volume (improves swirl generation in the cylinder), toothed backlash compensator, intake manifold with electric continual tumble flap control, electronically controlled common rail direct injection fuel system with Bosch high pressure pump (up to 1800 bar) and 8-hole piezo injector units, pre-supply electronic fuel pump, oil cooler, intercooler, low temperature exhaust gas recirculation, additional coolant pump, turbocharger with variable turbine geometry, catalytic converter and Diesel Particulate Filter (DPF)
- 2.0 litre/170 PS⁽⁰¹⁾ (125 kW) common rail diesel engine: EU5 emissions standard, four cylinder in-line engine, four valves per cylinder, aluminium-silicon alloy cylinder head, reduced piston crown volume (improves swirl generation in the cylinder), toothed backlash compensator, intake manifold with electric continual tumble flap control, electronically controlled common rail direct injection fuel system with Bosch high pressure pump (up to 1800 bar) and 8-hole piezo injector units, pre-supply electronic fuel pump, oil cooler, intercooler, low temperature exhaust gas recirculation, additional coolant pump, turbocharger with variable turbine geometry, catalytic converter and Diesel Particulate Filter (DPF)

Technical specification dimensions.

S,
BlueMotion 2,
R Line,
Highline
R36

Maximum luggage capacity, litres VDA measuring method using 200 x 100 x 50 mm blocks	With rear seat upright	513	498
	With rear seat folded	1641	1626
Exterior dimensions	Length, mm	4774	4774
	Width – excluding door mirrors, mm	1820	1820
	Width – opened front/rear doors, mm	3723/3462	3723/3462
	Height, mm	1517	1517
	Height – opened bonnet/floor, mm	1826	1826
	Height – opened tailgate/floor, mm	2058	2058
	Wheelbase, mm	2709	2709
	Turning circle, mm	11400	11400
Interior dimensions	Effective headroom – front, mm (with sunroof)	970 (952)	970 (952)
	Effective headroom – rear, mm (with sunroof)	980 (980)	980 (980)
	Elbow width – front, mm	1466	1466
	Elbow width – rear, mm	1511	1511
	Legroom – front, mm	725 - 1038	725 - 1038



Safety.

01. The front suspension system utilises a spring strut front axle, chassis legs and (lower) triangular wishbones (directionally stabilising steering roll radius).

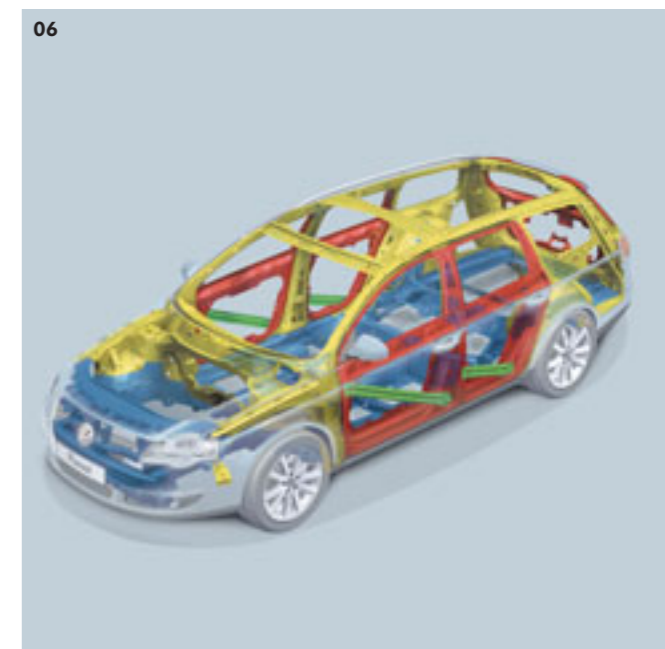
02. Rear wheel control is implemented through a four-link suspension system with independent wheel suspension.

03. The electronic tyre pressure monitoring system conveniently indicates changes in tyre pressure on the instrument display. Standard on R36 models.

04. Through a combination of Traction Control (ASR), Electronic Differential Lock (EDL) and Anti-lock Braking System (ABS), the Passat Estate delivers exceptional handling and braking.

05. The Electronic Stabilisation Programme (ESP) detects critical situations at an early stage and takes action by, for example, specifically braking individual wheels.

06. The body of the Passat Estate is formed from specially hardened components which possess high strength and excellent shaping characteristics. Thanks to the latest lightweight construction technology the body also offers optimal protection under heavy impact – all with a weight of only 298 kg.



The most important consideration for any driver is safety. That's why it's so reassuring to drive the Passat Estate. With a whole range of new generation safety features included as standard, the Passat Estate provides the highest levels of safety possible, ensuring optimum protection in hazardous situations.

Of course, it's even better to avoid hazards in the first place, which is where the Passat Estate's active safety concept comes in. An innovative suspension system, with a spring strut front axle and four-link rear axle, counteracts any unevenness in the road surface, keeping the Passat Estate safely in place. At the same time, the driver benefits from electro-mechanical power-assisted steering, which reacts with extreme precision even at high speeds. The Electronic Stabilisation Programme (ESP) plays a further role, utilising Electronic Differential Lock (EDL), Traction Control (ASR) and Countersteer Support to help correct oversteer, understeer and loss of stability of the vehicle. The result is optimum traction when rounding bends. And to ensure you retain control on a slippery surface, the Anti-lock Braking System (ABS) prevents the wheels from locking in the event of an abrupt braking manoeuvre. Finally, an electronic tyre pressure monitoring system, standard on R36 models, automatically lets you know via the instrument panel, as soon as there is any change in the vehicle's tyre pressure.

An important element of the Passat Estate's safety philosophy concerns the protection of other road users, and involves a completely new passive safety concept. It starts with special protection zones located in the front body area and bumpers, reducing the risk of injury to cyclists and pedestrians. Occupants of the Passat Estate are protected too, by a bodyshell equipped with crumple zones designed to absorb impact energy and protect the inner passenger compartment. Further protection is provided by a six airbag system, which includes driver's and front seat passenger's airbags, curtain airbags at the front and rear, and side impact airbags for the front, with rear available as an optional extra. In the event of an accident, WOKS (whiplash-optimised head restraints) on the front seats react within milliseconds, to help protect the head from injury and reduce whiplash. All this is supplemented by three-point automatic safety belts on all seats, an acoustic and optical warning for the driver's and front seat passenger's unfastened seat belts, and Volkswagen's innovative Isofix fittings to accommodate two child seats in the rear, providing maximum protection for children. As you can see, everything has been thought of to ensure maximum safety for all concerned, whether for other road users or for you and your passengers. You couldn't ask for more than that.

Paint.



Black
Non-Metallic
A1



Candy White*
Non-Metallic
B4



Tornado Red*
Non-Metallic
G2



Maritime Blue
Non-Metallic
K1



Silver Leaf
Metallic†
7B



Reflex Silver*
Metallic†
8E



Iron Grey
Metallic†
9H



Shadow Blue
Metallic†
P6



Deep Black
Pearl Effect†
2T



Mocca Anthracite
Pearl Effect†
3Q



Biscay Blue*¹
Pearl Effect†
7Q



Island Grey
Pearl Effect†
C9



Diamond Black*²
Pearl Effect†
Z4

■ Standard ■ Optional at extra cost

Please note: Screen technology does not allow for exact reproduction of the paint colours. For further details, please contact your Volkswagen retailer.

* Candy White (B4), Tornado Red (G2), Reflex Silver (8E), Biscay Blue (7Q) and Diamond Black (Z4) are the only colours available on R36 models.

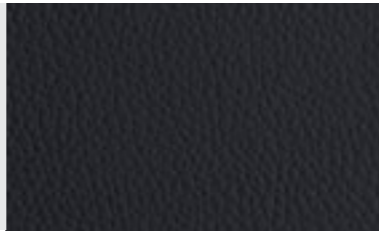
† Metallic and pearl effect paint are optional at extra cost. ¹ Biscay Blue (7Q) is only available on RLine and R36 models. ² Diamond Black (Z4) is only available on R36 models.

Upholstery.

Black
'Calino' cloth
AR
 Standard on S, R Line, BlueMotion 2



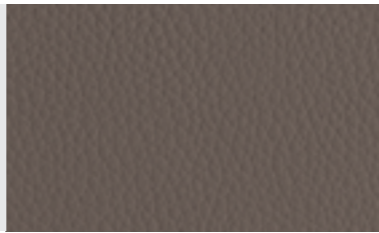
Black
'Vienna' leather* comfort seats
XG
 Standard on Highline



Grey
'Vienna' leather* comfort seats
XJ
 Standard on Highline



Latte
'Vienna' leather* comfort seats
XK
 Standard on Highline



Cornsilk Beige
'Vienna' leather* comfort seats
WE
 Standard on Highline



Black/Grey
'R36' cloth sports seats
WU
 Standard on R36



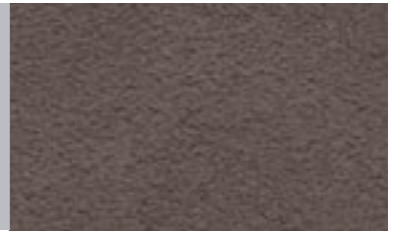
Standard Optional at extra cost

Optional upholstery.

Black/Grey
'San Remo' microfibre sport seats with 'Vienna' leather* side bolsters
IU
 Optional on R36



Latte Macchiato
'San Remo' microfibre sport seats with 'Vienna' leather* side bolsters
IV
 Optional on R36



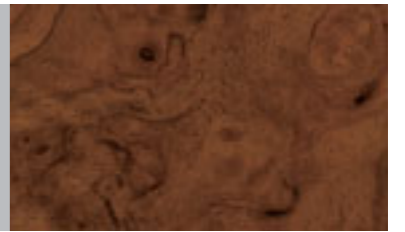
Please note: Screen technology does not allow for exact reproduction of the upholstery and decorative inserts colours. For further details, please contact your Volkswagen retailer.

Decorative inserts.

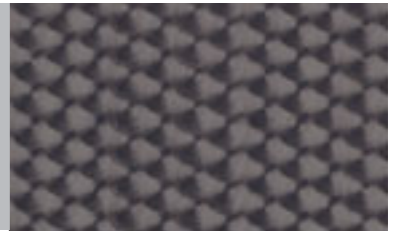
Dark brushed Aluminium
5MU
 Standard on R36



Burr Walnut †
PN5
 Optional on Highline



Engine spin
PNA
 Optional on R36



* Some parts of leather interior will contain artificial leather

† Optional only in conjunction with latte or cornsilk beige upholstery.

Combinations.

	S/BlueMotion 2	R Line	Highline	R36		Seat upholstery	Carpet	Dashboard	Black (A1)	Candy White (B4)	Tornado Red (G2)	Maritime Blue (K1)	Silver Leaf metallic (7B)*	Reflex Silver metallic (8E)*	Iron Grey metallic (9H)*	Shadow Blue metallic (P6)*	Deep Black pearl effect (2T)*	Mocca Anthracite pearl effect (3Q)*	Biscay Blue pearl effect (7Q)*	Island Grey pearl effect (C9)*	Diamond Black pearl effect (Z4)*	
'Calino' cloth Standard on S, BlueMotion 2	●				AR	Black	Black	Black/Black	-	●	●	-	-	●	-	-	●	●	-	●	-	
'Calino' cloth Standard on R Line		●			AR	Black	Black	Black/Black	-	●	●	-	-	●	-	-	●	●	●	●	-	
'Vienna' leather comfort seats† Standard on Highline			●		XG	Black	Black	Black/Black	●	●	●	●	●	●	●	●	●	●	-	●	-	
			●		XJ	Grey	Black	Black/Grey	●	●	●	●	●	●	●	●	●	●	●	-	●	-
			●		XK	Latte	Black	Black/Latte	●	●	●	●	●	●	●	●	●	●	-	●	-	
			●		WE	Cornsilk Beige	Cornsilk Beige	Black/Cornsilk Beige	●	●	●	●	-	-	●	●	●	●	-	●	-	
'R36' cloth sports seats Standard on R36				●	WU	Black/Grey	Black	Black/Black	-	●	●	-	-	●	-	-	-	-	●	-	●	
'San Remo' microfibre sports seats with 'Vienna' leather side bolsters* † Optional on R36				○	IU	Black/Grey	Black	Black/Black	-	○	○	-	-	○	-	-	-	-	-	○	-	
				○	IV	Latte Machiatto	Black	Latte Machiatto	-	○	-	-	-	○	-	-	-	-	-	-	○	

* Metallic and pearl effect paints and 'San Remo' upholstery are optional at extra cost.

† Some parts of leather interior will contain artificial leather.

● Standard ○ Optional at extra cost - Not available

Optional equipment.

01 The Passat Estate features Volkswagen's latest generation **DVD touch-screen navigation/radio system**, this new DVD based navigation unit not only delivers great sound quality but it can also guide you to your destination. A 6½" high resolution, touch-screen colour display shows a perspective (bird's-eye) view of your mapped route, in addition, traffic information (TMC), landmarks, intersection zoom, points of interest and a route list can all be viewed. As well as featuring the latest in processor technology, resulting in quick route calculations using all but the last two digits of a UK postcode, this sophisticated system features a 30 GB hard drive to buffer the navigation data as well as store the driver's favourite audio and video files (i.e. MP3, WMA, DVD video data files), the integrated DVD drive and SD (Secure Digital) card reader also allow the playback of such audio and video files. Also included is a rear-view camera which allows you to judge distances and view obstacles obscured from view behind your vehicle via the touch-screen colour display. Completing the multimedia experience is the ability to connect an external multimedia device (e.g. iPod and MP3 player) via the AUX-in socket. Optional on all models.



02 The **RCD 510 touch-screen radio system with integral dash-mounted MP3 compatible six CD autochanger and AUX-in socket for connection to an external multimedia source (e.g. iPod and MP3 player)** ensures hours of listening pleasure. Optional on all models.

03 **Bluetooth telephone preparation*** enables you to use your mobile phone without taking it out of your jacket pocket, thanks to Bluetooth (rSAP) connectivity. It is controlled via a separate keypad on the control panel. Optional on Highline and R36 models.



04 The **2Zone electronic climate control air conditioning system**, with automatic air recirculation and indirect ventilation, uses electronic 2Zone temperature control to create an air conditioned environment individually suited to the driver and front seat passenger. Standard on R36 and optional on all other models.

05 The front centre armrest features both an AUX-in socket and **Multi Device Interface (MDI)**, with the facility to connect, charge and store a compatible iPod or USB device. Optional on all models.



'**Monsoon**' and '**Dynaudio**' soundpacks (not shown) ensure even greater sound quality for your Passat Estate when specified with the DVD touch-screen navigation/radio system or touch-screen radio system RCD 510. 'Monsoon' optional on R Line and Highline models and 'Dynaudio' optional on R36 models.

Also available, but not shown:

The **DAB digital radio receiver** is available as an upgrade for your RCD 310 or RCD 510, enabling you to listen to all the digital stations available in crystal digital sound. Please note: DAB digital radio receiver and DVD touch-screen navigation/radio cannot be specified in conjunction with each other. Optional on all models.



* Only in conjunction with a multifunction steering wheel – phones must be compatible with rSAP (rSim Access Profile), please contact your retailer for phone compatibility.

Please note: DVD touch-screen navigation/radio system and touch-screen radio system RCD 510 cannot be specified in conjunction with each other. DVD playback will not function whilst the navigation system is in use, or the vehicle is in motion.

01 Bi-Xenon headlights with automatic range adjustment, static corner lighting and dynamic curve lighting produce a much clearer, brighter light for both dipped and main beam, giving you a clearer view of the road ahead and helping you drive more safely, particularly on winding roads. Also included in this option are headlight washers which help keep headlights free from dirt, ensuring maximum visibility. Standard on R36 and optional on all other models.



02 The front and rear parking sensors featuring optical parking display monitor the vehicle's distance from an obstacle, helping you manoeuvre in and out of parking bays. The radio system, or navigation/radio system display provides a visual representation, whilst an acoustic signal warns as an obstacle becomes closer. Standard on R36 and optional on all other models.



03 This specially designed cargo management system comprises two rails positioned on the left and right of the cargo area and four lashing eyelets. The rails can be used to individually fix straps and a telescopic rail into place using variable rod positions enabling secure stowage of luggage, whatever the size or shape. Optional on all models.



Also available, but not shown:

Integrated child seats* are integrated into the rear seat bench including seat belt tensioners for outer rear seats. A new design offers booster pillows integrated into the headrest mountings, giving your child even more side support. Please note that the integrated child seats are only available in conjunction with black upholstery or black leather. Optional on all models.

* Not in conjunction with heated rear seats.

Wheels.



- 01** 'Milwaukee' 7J x 16 alloy wheels with 215/55 R16 tyres. Standard on S models and not available as an option.
- 02** 'Sarena' 7J x 16 alloy wheels with 205/55 R16 low rolling resistance tyres. Standard on BlueMotion 2 models and not available as an option.
- 03** 'Monte Carlo' 7½J x 17 alloy wheels with 235/45 R17 tyres. Standard on R line models and not available as an option.
- 04** 'Macau' 7½J x 17 alloy wheels with 235/45 R17 tyres. Standard on Highline models and not available as an option.
- 05** 'Omanyt' 8J x 18 alloy wheels with 235/40 R18 tyres. Standard on R36 models. 19" 'Omanyt' 9J x 19 alloy wheels with 255/40 R19 tyres are also available as an option for the R36.
- 06** 'Chicago' 8J x 18 with 235/40 R18 tyres. Optional on Highline models.

Volkswagen service for your peace of mind.

The Volkswagen Warranty.

Three-year Warranty.

All Volkswagen Passat Estates come with a three-year/60,000 miles warranty, which protects your car against the failure of most mechanical and electrical components due to manufacturing defects. This comprises a two-year manufacturer's warranty with unlimited mileage plus a further one-year/60,000 miles (whichever is soonest) Retailer Warranty. Should the mileage exceed 60,000 miles within the first two years, the manufacturer's two-year warranty will still be valid. If an additional warranty for subsequent years or higher mileage is desired, it may be purchased from an authorised Volkswagen retailer or repairer; however, this additional warranty must be purchased before the mileage reaches 60,000*. Full details of the three-year warranty are available from your authorised Volkswagen retailer or repairer.

* All warranty work must be completed by an authorised Volkswagen retailer or repairer.

Three-year Paint Warranty.

The paintwork of the Passat Estate is covered against manufacturing defects for a period of three years. Naturally, the Passat Estate must be cared for in compliance with the operating instructions which will be found in your vehicle handbook. Please consult your authorised Volkswagen retailer or repairer for full warranty details.

12-year Body Protection Warranty.

The internal body sections and panels of the Passat Estates are covered against rusting through from the inside for 12 years. Naturally, the Passat Estate must be cared for in compliance with the operating instructions. Please consult your authorised Volkswagen retailer or repairer for full warranty details.

Extended Warranty.

You may purchase additional protection from your authorised Volkswagen retailer or repairer, or contact 0870 9000 115.

Approved Accessories.

A comprehensive range of accessories from alloy wheels to carpet mats is available to complement the factory-fitted option list. Volkswagen approved accessories purchased from and fitted by your authorised Volkswagen retailer at the point of vehicle sale will also benefit from the three-year vehicle warranty.

Service Intervals.

Volkswagen are pleased to offer you a choice on how your Passat Estate is serviced. The appropriate selection is entirely dependent on how the car is likely to be driven and its general use. To help you identify which type of service would be most suitable, please refer to the following guide.

The Time and Distance Service is recommended for vehicles that will cover less than 10,000 miles in 12 months and if the vehicle is likely to be used in the following way:

- Predominantly urban driving, short journeys with frequent cold starts.
- Activities regularly producing high engine loading, e.g. frequent hill climbs, driving with vehicle fully loaded and towing.
- Uneconomical driving style using high rpms with heavy acceleration and heavy braking.

The service intervals for the Time and Distance Service are as follows:

- Oil change service
Every 10,000 miles/1 year (whichever is soonest).
- Interval service
Every 20,000 miles/2 years (whichever is soonest).
- Inspection service
Every 40,000 miles/3 years (whichever is soonest).

The LongLife Service is recommended for vehicles with a daily mileage of more than 25 miles where the vehicle is driven regularly mainly on longer distance journeys. The vehicle is driven mainly at a constant speed with minimum vehicle and engine loading, minimal towing and driven in an economical manner.

With the LongLife Service the vehicle can cover anywhere between 10,000[†] and a maximum of 18,000[†] miles or 24 months (whichever is soonest) between oil changes. Inspection service is typically in the third year of ownership and thereafter every second year, for vehicles with an approximate annual mileage of 10,000 miles.

[†] Please note that mileages are approximate as the service indicator system uses kilometres as the distance measurement. Please consult your authorised Volkswagen retailer or repairer for advice and full details.

Volkswagen Finance[‡].

Volkswagen Finance specialises in providing funding solutions for Volkswagen drivers. Whether your Volkswagen is for private or business use, you can choose from a range of funding options.

- Solutions – a personal contract plan
- Hire purchase
- Lease purchase
- Finance lease
- Contract hire

With all Volkswagen Finance products you can choose a fixed-cost maintenance plan to help you budget for your servicing and maintenance costs.

No matter what finance product you choose, your local Volkswagen retailer will be able to provide you with a personalised quote that could meet your budget and vehicle needs.

[‡] Volkswagen Finance is a trading name of Volkswagen Financial Services (UK) Limited. An offer of finance depends on certain conditions. Available to people over 18 in the UK only.

Volkswagen Insurance[±].

Competitive and comprehensive motor insurance designed especially for Volkswagen drivers. All new and Approved Used Volkswagens come with complimentary seven-day cover upon request – we'll e-mail a cover note straight to your retailer, enabling them to tax your car easily. This way, you can drive straight out of the showroom. Taking out annual cover is easy and it can start when the seven-day cover expires. For more information contact your local Volkswagen retailer or call 0800 051 3136.

[±] Volkswagen Insurance is underwritten and administered by Zurich Insurance plc. Volkswagen Insurance is a trading name of Volkswagen Insurance Service (Great Britain) Limited which is an appointed representative of Volkswagen Financial Services (UK) Limited. Zurich Insurance plc and Volkswagen Financial Services (UK) Limited are both authorised and regulated by the Financial Services Authority.

Volkswagen Roadside Assistance.

Every new car is registered for Volkswagen Roadside Assistance for one year. This provides vehicle home and roadside recovery in the unlikely event of a breakdown in the UK and Europe (subject to conditions). Volkswagen Roadside Assistance can also be purchased for subsequent years. For full details, please contact your authorised Volkswagen retailer or repairer.

Tax Free Sales.

For full details, please contact your authorised Volkswagen retailer.

CO₂ Emission.

Increased weight of a vehicle, including higher trim levels and the addition of options will have a detrimental influence on the level of fuel consumption and CO₂ emissions produced.

The CO₂ and fuel consumption figures are obtained from tests on a representative vehicle of the type, conducted and approved in accordance with Council Directive 80/1268/EEC as amended by Directive 1999/100/EC (or later) on the approximation of the laws of the member states relating to the carbon dioxide emissions and the fuel consumption of motor vehicles.

Please Note:

Some illustrations in this brochure do not necessarily reflect UK specifications and may not be available. In particular, controls and some items of equipment are positioned differently for the UK.

The specifications contained in this brochure are for information purposes only and are subject to change. If you require any specific feature, you must consult your authorised Volkswagen retailer who is regularly updated with any change in specification. Please check model availability and full specification details with your authorised Volkswagen retailer prior to ordering.

Note: We would like to advise you that telephone calls to Volkswagen Customer Care may be monitored and recorded as part of our training and quality assurance processes. All our monitoring and recording processes meet Ofcom regulations.

Combinations.

	S/BlueMotion 2	Highline	Sport	SEL	R36	Seat upholstery	Carpet	Dashboard	Black (A1)	Tornado Red (G2)	Maritime Blue (K1)	Silver Leaf metallic (7B)*	Arctic Blue Silver metallic (7J)*	Reflex Silver metallic (8E)*	Iron Grey metallic (9H)*	Island Grey metallic (C9)*	Shadow Blue metallic (P6)*	Diamond Black pearl effect (Z4)*	Deep Black pearl effect (2T)*	Mocca Anthracite pearl effect (3Q)*	Biscay Blue pearl effect (7Q)*
'Calino' cloth Standard on S, BlueMotion 2	•					AR Black	Black	Black/Black	•	•	•	•	•	•	•	•	•	-	•	•	-
'Vienna' leather comfort seats† Standard on Highline		•				XG Black	Black	Black/Black	•	•	•	•	•	•	•	•	•	-	•	•	-
		•				XJ Grey	Black	Black/Grey	•	•	•	•	•	•	•	•	•	-	•	•	-
		•				XK Latte	Black	Black/Latte	•	•	•	•	•	•	•	•	•	-	•	•	-
		•				WE Cornsilk Beige	Cornsilk Beige	Black/Cornsilk Beige	•	•	•	-	-	-	•	•	•	-	•	•	-
'Karah' cloth Standard on Sport			•			WN Black	Black	Black/Black	•	•	•	•	•	•	•	•	•	-	•	•	-
			•			WP Grey	Black	Black/Grey	•	•	•	•	•	•	•	•	•	-	•	•	-
Alcantara leather† Standard on SEL				•		VX Black	Black	Black/Black	•	•	•	•	•	•	•	•	•	-	•	•	-
				•		VB Grey	Black	Black/Grey	•	•	•	•	•	•	•	•	•	-	•	•	-
				•		PH Cornsilk Beige	Cornsilk Beige	Black/Cornsilk Beige	•	•	•	-	-	-	•	•	•	-	•	•	-
'R36' cloth sports seats Standard on R36					•	WU Black/Grey	Black	Black/Black	-	•	-	-	-	•	-	-	-	•	-	-	•
'Nappa' leather sports seats*† Optional on Sport and SEL			○	○		ZQ Black	Black	Black/Black	○	○	○	○	○	○	○	○	○	-	○	○	-
			○	○		ZX Grey	Black	Black/Grey	○	○	○	○	○	○	○	○	○	-	○	○	-
			○	○		ZY Latte	Black	Black/Latte	○	○	○	○	○	○	○	○	○	-	○	○	-
			○	○		XL Cornsilk Beige	Cornsilk Beige	Black/Cornsilk Beige	○	○	○	-	-	-	○	○	○	-	○	○	-
'San Remo' microfibre sports seats with 'Vienna' leather side bolsters*† Optional on R36					○	IU Black/Grey	Black	Black/Black	-	○	-	-	-	○	-	-	-	○	-	-	○
					○	IV Latte Machiatto	Black	Latte Machiatto	-	-	-	-	-	○	-	-	-	○	-	-	-

* Metallic and pearl effect paints and 'Nappa' leather and 'San Remo' upholstery are optional at extra cost.

† Some parts of leather interior will contain artificial leather.

● Standard ○ Optional at extra cost - Not available

Optional equipment.

01 The Passat Estate features Volkswagen's latest generation **DVD touch-screen navigation/radio system**, this new DVD based navigation unit not only delivers great sound quality but it can also guide you to your destination. A 6½" high resolution, touch-screen colour display shows a perspective (bird's-eye) view of your mapped route, in addition, traffic information (TMC), landmarks, intersection zoom, points of interest and a route list can all be viewed. As well as featuring the latest in processor technology, resulting in quick route calculations using all but the last two digits of a UK postcode, this sophisticated system features a 30 GB hard drive to buffer the navigation data as well as store the driver's favourite audio and video files (i.e. MP3, WMA, DVD video data files), the integrated DVD drive and SD (Secure Digital) card reader also allow the playback of such audio and video files. Also included is a rear-view camera which allows you to judge distances and view obstacles obscured from view behind your vehicle via the touch-screen colour display. Completing the multimedia experience is the ability to connect an external multimedia device (e.g. iPod and MP3 player) via the AUX-in socket.



02 The **RCD 510 touch-screen radio system with integral dash-mounted MP3 compatible six CD autochanger and AUX-in socket for connection to an external multimedia source (e.g. iPod and MP3 player)** ensures hours of listening pleasure. Standard on SEL and SEL V6 4MOTION models.

03 Bluetooth telephone preparation* enables you to use your mobile phone without taking it out of your jacket pocket, thanks to Bluetooth (rSAP) connectivity. It is controlled via a separate keypad on the control panel.

04 The 2Zone electronic climate control air conditioning system, with automatic air recirculation and indirect ventilation, uses electronic 2Zone temperature control to create an air conditioned environment individually suited to the driver and front seat passenger. Standard on Sport, SEL, SEL V6 4MOTION and R36 models.



'Monsoon' and 'Dynaudio' soundpacks (not shown) ensure even greater sound quality for your Passat Estate when specified with the DVD touch-screen navigation/radio system or touch-screen radio system RCD 510.

Also available, but not shown:

The **DAB digital radio receiver** is available as an upgrade for your RCD 310 or RCD 510, enabling you to listen to all the digital stations available in crystal digital sound. Please note: DAB digital radio receiver and DVD touch-screen navigation/radio cannot be specified in conjunction with each other.

Please note: DVD touch-screen navigation/radio system and touch-screen radio system RCD 510 cannot be specified in conjunction with each other. DVD playback will not function whilst the navigation system is in use, or the vehicle is in motion.



* Only in conjunction with a multifunction steering wheel – phones must be compatible with rSAP (rSim Access Profile), please contact your retailer for phone compatibility.

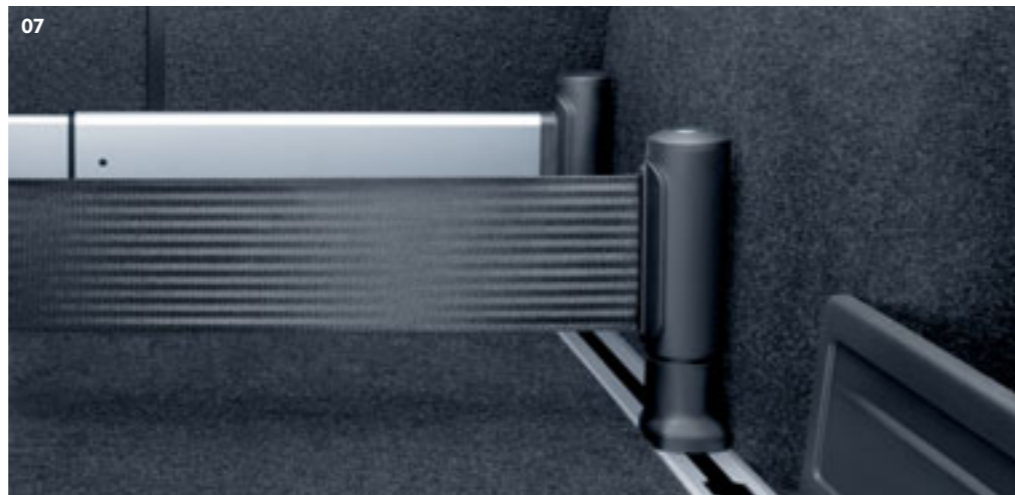
05 Bi-Xenon headlights with automatic range adjustment, static corner lighting and dynamic curve lighting produce a much clearer, brighter light for both dipped and main beam, giving you a clearer view of the road ahead and helping you drive more safely, particularly on winding roads. Also included in this option are headlight washers which help keep headlights free from dirt, ensuring maximum visibility. Standard on R36 models.



06 The front and rear parking sensors featuring optical parking display monitor the vehicle's distance from an obstacle, helping you manoeuvre in and out of parking bays. The radio system, or navigation/radio system display provides a visual representation, whilst an acoustic signal warns as an obstacle becomes closer. Standard on R36 models.



07 This specially designed cargo management system comprises two rails positioned on the left and right of the cargo area and four lashing eyelets. The rails can be used to individually fix straps and a telescopic rail into place using variable rod positions enabling secure stowage of luggage, whatever the size or shape.



Also available, but not shown:

Integrated child seats are integrated into the rear seat bench including seat belt tensioners for outer rear seats. A new design offers booster pillows integrated into the headrest mountings, giving your child even more side support. Please note that the integrated child seats are only available in conjunction with black upholstery or black leather.



01 'Milwaukee' 7J x 16 alloy wheels with 215/55 R16 tyres. Standard on S models and not available as an option.

02 'Sarena' 7J x 16 alloy wheels with 205/55 R16 low rolling resistance tyres. Standard on BlueMotion 2 models and not available as an option.

03 'Macau' 7½J x 17 alloy wheels with 235/45 R17 tyres. Standard on Highline models and not available as an option.

04 'Adelaide' 7J x 16 alloy wheels with 215/55 R16 tyres. Standard on SEL models and not available as an option.

05 'Solitude' 7½J x 17 alloy wheels with 235/45 R17 tyres. Standard on SEL V6 4MOTION models and not available as an option.

06 'Monte Carlo' 7½J x 17 alloy wheels with 235/45 R17 tyres. Standard on Sport models and optional on SEL models. 'Monte Carlo' alloy wheels also form part of the **Sports pack**, optional on SEL and SEL V6 4MOTION models.

07 'Le Mans' 7½J x 17 alloy wheels with 235/45 R17 tyres. Optional on Sport and SEL V6 4MOTION models.

08 'Omanyt' 8J x 18 alloy wheels with 235/40 R18 tyres. Standard on R36 models. 19" 'Omanyt' 9J x 19 alloy wheels with 255/40 R19 tyres are also available as an option for the R36.

09 'Chicago' by Individual 8J x 18 with 235/40 R18 tyres. Optional on Highline and Sport models. 'Chicago' alloy wheels also form part of the **Sports pack**, optional on SEL and SEL V6 4MOTION models.



Wheels.



Enhance your Passat Estate with a sporty new look with the optional **Sports pack** available for SEL and SEL V6 4MOTION models. This option includes approximately 15 mm lowered sports suspension, darkened windows from B pillar back and front fog lights. To complete the look just choose between 17 inch 'Monte Carlo' or 18 inch 'Chicago' alloy wheels. When you specify 'Chicago' alloy wheels on SEL models, you also get a full size spare alloy wheel. **Sports pack** with 17 inch 'Monte Carlo' alloy wheels are standard on Sport models.

Please note, alloy wheels and sports pack cannot be specified in conjunction with each other.

Volkswagen service for your peace of mind.

The Volkswagen Warranty.

Three-year Warranty.

All Volkswagen Passat Estates come with a three-year/60,000 miles warranty, which protects your car against the failure of most mechanical and electrical components due to manufacturing defects. This comprises a two-year manufacturer's warranty with unlimited mileage plus a further one-year/60,000 miles (whichever is soonest) Retailer Warranty. Should the mileage exceed 60,000 miles within the first two years, the manufacturer's two-year warranty will still be valid. If an additional warranty for subsequent years or higher mileage is desired, it may be purchased from an authorised Volkswagen retailer or repairer; however, this additional warranty must be purchased before the mileage reaches 60,000*. Full details of the three-year warranty are available from your authorised Volkswagen retailer or repairer.

* All warranty work must be completed by an authorised Volkswagen retailer or repairer.

Three-year Paint Warranty.

The paintwork of the Passat Estate is covered against manufacturing defects for a period of three years. Naturally, the Passat Estate must be cared for in compliance with the operating instructions which will be found in your vehicle handbook. Please consult your authorised Volkswagen retailer or repairer for full warranty details.

12-year Body Protection Warranty.

The internal body sections and panels of the Passat Estates are covered against rusting through from the inside for 12 years. Naturally, the Passat Estate must be cared for in compliance with the operating instructions. Please consult your authorised Volkswagen retailer or repairer for full warranty details.

Extended Warranty.

You may purchase additional protection from your authorised Volkswagen retailer or repairer, or contact 0870 9000 115.

Approved Accessories.

A comprehensive range of accessories from alloy wheels to carpet mats is available to complement the factory-fitted option list. Volkswagen approved accessories purchased from and fitted by your authorised Volkswagen retailer at the point of vehicle sale will also benefit from the three-year vehicle warranty.

Service Intervals.

Volkswagen are pleased to offer you a choice on how your Passat Estate is serviced. The appropriate selection is entirely dependent on how the car is likely to be driven and its general use. To help you identify which type of service would be most suitable, please refer to the following guide.

The Time and Distance Service is recommended for vehicles that will cover less than 10,000 miles in 12 months and if the vehicle is likely to be used in the following way:

- Predominantly urban driving, short journeys with frequent cold starts.
- Activities regularly producing high engine loading, e.g. frequent hill climbs, driving with vehicle fully loaded and towing.
- Uneconomical driving style using high rpms with heavy acceleration and heavy braking.

The service intervals for the Time and Distance Service are as follows:

- Oil change service
Every 10,000 miles/1 year (whichever is soonest).
- Interval service
Every 20,000 miles/2 years (whichever is soonest).
- Inspection service
Every 40,000 miles/3 years (whichever is soonest).

The LongLife Service is recommended for vehicles with a daily mileage of more than 25 miles where the vehicle is driven regularly mainly on longer distance journeys. The vehicle is driven mainly at a constant speed with minimum vehicle and engine loading, minimal towing and driven in an economical manner.

With the LongLife Service the vehicle can cover anywhere between 10,000[†] and a maximum of 18,000[†] miles or 24 months (whichever is soonest) between oil changes. Inspection service is typically in the third year of ownership and thereafter every second year, for vehicles with an approximate annual mileage of 10,000 miles.

[†] Please note that mileages are approximate as the service indicator system uses kilometres as the distance measurement. Please consult your authorised Volkswagen retailer or repairer for advice and full details.

Volkswagen Finance‡.

Volkswagen Finance specialises in providing funding solutions for Volkswagen drivers. Whether your Volkswagen is for private or business use, you can choose from a range of funding options.

- Solutions – a personal contract plan
- Hire purchase
- Lease purchase
- Finance lease
- Contract hire

With all Volkswagen Finance products you can choose a fixed-cost maintenance plan to help you budget for your servicing and maintenance costs.

No matter what finance product you choose, your local Volkswagen retailer will be able to provide you with a personalised quote that could meet your budget and vehicle needs.

‡ Volkswagen Finance is a trading name of Volkswagen Financial Services (UK) Limited. An offer of finance depends on certain conditions. Available to people over 18 in the UK only.

Volkswagen Insurance±.

Competitive and comprehensive motor insurance designed especially for Volkswagen drivers. All new and Approved Used Volkswagens come with complimentary seven-day cover upon request – we'll e-mail a cover note straight to your retailer, enabling them to tax your car easily. This way, you can drive straight out of the showroom. Taking out annual cover is easy and it can start when the seven-day cover expires. For more information contact your local Volkswagen retailer or call 0800 051 3136.

± Volkswagen Insurance is underwritten and administered by Zurich Insurance plc. Volkswagen Insurance is a trading name of Volkswagen Insurance Service (Great Britain) Limited which is an appointed representative of Volkswagen Financial Services (UK) Limited. Zurich Insurance plc and Volkswagen Financial Services (UK) Limited are both authorised and regulated by the Financial Services Authority.

Volkswagen Roadside Assistance.

Every new car is registered for Volkswagen Roadside Assistance for one year. This provides vehicle home and roadside recovery in the unlikely event of a breakdown in the UK and Europe (subject to conditions). Volkswagen Roadside Assistance can also be purchased for subsequent years. For full details, please contact your authorised Volkswagen retailer or repairer.

Tax Free Sales.

For full details, please contact your authorised Volkswagen retailer.

CO₂ Emission.

Increased weight of a vehicle, including higher trim levels and the addition of options will have a detrimental influence on the level of fuel consumption and CO₂ emissions produced.

The CO₂ and fuel consumption figures are obtained from tests on a representative vehicle of the type, conducted and approved in accordance with Council Directive 80/1268/EEC as amended by Directive 1999/100/EC (or later) on the approximation of the laws of the member states relating to the carbon dioxide emissions and the fuel consumption of motor vehicles.

Please Note:

Some illustrations in this brochure do not necessarily reflect UK specifications and may not be available. In particular, controls and some items of equipment are positioned differently for the UK.

The specifications contained in this brochure are for information purposes only and are subject to change. If you require any specific feature, you must consult your authorised Volkswagen retailer who is regularly updated with any change in specification. Please check model availability and full specification details with your authorised Volkswagen retailer prior to ordering.

Note: We would like to advise you that telephone calls to Volkswagen Customer Care may be monitored and recorded as part of our training and quality assurance processes. All our monitoring and recording processes meet Ofcom regulations.