



Das Auto.

The new Polo



Designed to impress. Built to last.

Striking design, uncompromising quality and exciting engines. That's what you can expect in the fabulous new Polo, the tough little performer that's packed with big car credentials. Stylish, elegant and understated, the new Polo is designed to stand the test of time, beautifully crafted inside and out, and testament to Volkswagen's lasting quality standards. Built for the long haul and designed to endure, the new Polo is not just for now. It's for keeps.



Model shown is new Polo SEL with optional 17" 'Boavista' alloy wheels.

Take time to admire your new Polo. From every angle.

The new Polo will certainly turn heads wherever it goes. But it's not just about looks. It's about performance, too. And with a choice of powerful engines, such as the 1.2 litre and 1.4 litre petrol and two 1.6 litre TDI diesel engines*, delivering exceptional economy with high pulling power, there's one thing to look forward to above all else. The ultimate in driving fun.

* Please see the Engines section for fuel consumption and CO₂ emissions figures.



Model shown is new Polo SEL with optional 17" 'Boavista' alloy wheels and metallic paint.



Explore the city.

Model shown is new Polo SEL with optional 17" 'Boavista' alloy wheels.



Or discover the great outdoors.

Model shown is new Polo SEL with optional 17" 'Boavista' alloy wheels.

Either way, you'll always feel at home.



Models shown are new Polo SEL with optional 17" 'Boavista' alloy wheels and new Polo Moda with optional 16" 'Navarre' alloy wheels and metallic paint.

Model shown is new Polo SEL with optional 17" 'Boavista' alloy wheels and metallic paint.

Exterior

Dynamic, self assured, confident, the new Polo exudes a sporty elegance designed to stand the test of time, rather than bow to fashion fads. Powerful lines accentuate its athletic character, while specific details, such as the stylish rear lights, define its classic style. A selection of individually designed alloy wheels gives you the opportunity to enhance the sporty feel, and contributes to the overall precision handling. This is a car you cannot help but notice, for all the right reasons.



The electrically heated and adjustable body-coloured door mirrors with integrated indicators enhance the streamlined bodyshape and help improve the aerodynamics. Standard on Moda, SE and SEL models.



The striking rear lights blend perfectly with the rear design, highlighting its stylish contours.



Curved body-coloured door handles are not only easy-to-use, but flow seamlessly into the overall design, exuding quality and solidity. Standard on Moda, SE and SEL models.



The front grille with attractive chrome trimmed louvre insert is a distinctive characteristic of the new Polo, contributing to its sporty elegance and adding a touch of quality and charisma. Standard on Moda, SE and SEL models.



Stylish halogen headlights blend seamlessly with the chrome trimmed radiator grille louvre insert, indicative of the new Polo's uncompromising attention to detail. Providing better vision in all weather, they also include daytime running lights so that you can be seen easily during the day. Model shown is new Polo SE with optional Winter pack.



Rear tinted windows from the B pillar back reduce sunlight by up to 65%, helping to ensure a pleasant temperature for rear passengers, and enhancing the exterior's sporty appeal. Standard on Moda models.

Enduring quality, leading performance.



Model shown is new Polo SEL with optional 17" 'Boavista' alloy wheels.



Understated elegance and classic styling is present both inside and out in the new Polo S, with high quality materials and attention to detail providing the perfect mix of style and comfort. Interior shown is new Polo SA/C with stylish 'Cirrus' cloth upholstery.



The height-adjustable driver's front seat can easily be adjusted to suit your optimum driving position, ensuring you reach your destination relaxed and in comfort.



'Cirrus' upholstery features a sporty honeycomb design and is both robust and hard-wearing, its dark, easy-to-clean surface ensuring the fabric stays as new for a long time to come.



14 inch steel wheels with 175/70 R14 tyres and full size wheel trims, feature a robust seven spoke design, adding a sporty touch.

The new Polo S

The entry level new Polo S is packed with an extensive range of equipment, and provides a truly impressive package. For a start, body-coloured bumpers and side sills, halogen headlights and heat insulating green tinted glass provides an impressive exterior. Inside, 'Cirrus' upholstery and 'High Gloss Black' decorative inserts give an exclusive look, and features include electric front windows, central locking and speed-sensitive power-assisted steering. White instrument lighting, a three-spoke steering wheel and vanity mirrors complement the interior aesthetics, while a driver's seat with height adjustment and RCD 210 radio/MP3 compatible CD player with four front speakers enhance your driving enjoyment. Other features include a folding rear seat backrest, heated rear windscreen with automatic switch-off, luggage compartment cover and lighting, storage compartment in the centre console and interior lighting with delay, providing practical extras to keep you comfortable. Specify the new Polo SA/C and you get all the standard equipment of the S complete with 'Climatic' air conditioning with semi-automatic control for year round comfort.



The RCD 210 radio/MP3 compatible CD player will provide entertainment on every journey and has four front speakers to deliver excellent sound quality.



Choose the new Polo SA/C and easy-to-use 'Climatic' semi-automatic air conditioning comes as standard, ensuring a pleasant temperature throughout the vehicle, while also being environmentally-friendly.

The new Polo Moda

Inside, the stylish aesthetics continue with chrome detailing on the air vents, gear lever gaiter surround, internal door handles and handbrake button, while 'Strata' upholstery is both hard-wearing and comfortable. An RCD 310 radio/MP3 compatible CD player with six speakers provides exceptional acoustics, while a Multi Device Interface (MDI) offers USB and iPod connectivity. This allows you to play music from a compatible audio device through the radio speakers and track details will appear on the radio display. And if that's not enough to ensure total driving enjoyment, there are also front and rear electric windows, height adjustable driver and front passenger seats, and electrically heated and adjustable door mirrors, not to mention remote central locking, illuminated vanity mirrors and front and rear reading lights. With storage drawers under the front seats and a split folding rear seat backrest providing practical space, the Moda offers everything you could ask for and more. Specify the new Polo Moda A/C and you get 'Climatic' air conditioning with semi-automatic control for even more comfort on every journey.



The RCD 310 radio/MP3 compatible CD player features six speakers and its large screen clearly displays radio station choices or the track listings of a compatible device connected to the Multi Device Interface (MDI).



The Multi Device Interface (MDI) allows you to connect to an external multimedia source, such as USB or iPod, which you can operate via the vehicle's radio or optional navigation/radio system.



Front fog lights integrated into the front bumper are both attractive and stylish. They also provide better visibility in poor weather conditions.



'Cadiz' 6J x 15 alloy wheels with 195/55 R15 tyres and anti-theft wheel bolts add a particularly dynamic look, emphasising the Moda's sporty aesthetics.



Dynamic, stylish and sporty, the new Polo Moda has been designed to turn heads wherever it goes. A sporty exterior features stunning 15 inch 'Cadiz' six spoke alloy wheels, body-coloured door mirrors and door handles, a radiator grille with chrome trimmed louvre insert, front fog lights and rear tinted windows from the B pillar back.



Subtle details such as the air vent surround, internal door handles, gear lever gaiter surround and handbrake button are highlighted in 'Matt chrome' to create unique interior styling. Interior shown is new Polo SE in Titan Black 'Strata' cloth upholstery (also available in Seashell Beige) with optional front centre armrest, electronic climate control air conditioning, Convenience pack and metallic paint.

The new Polo SE

Take a seat in the new Polo SE and you'll find an even higher level of specification, ensuring your total comfort. Stylish 15 inch seven spoke 'Castille' alloy wheels, body-coloured door mirrors and door handles, and a radiator grille with chrome trimmed louvre insert give a contemporary look to the exterior, echoed inside by attractive and extremely durable 'Strata' upholstery. Chrome detailing adds an extra touch of elegance and refinement, and can be found on the air vents, gear lever surround, handbrake button and internal door handles. A whole range of features helps ensure maximum driving pleasure, including 'Climatic' semi-automatic air conditioning, driver and passenger seat height adjustment and an RCD 310 radio/MP3 compatible CD player with six speakers and an AUX-in socket for connection to an external multimedia source (e.g. iPod and MP3 player), while useful details include remote central locking, electric front and rear windows, and electrically heated and adjustable door mirrors. You'll even find front and rear reading lights, illuminated vanity mirrors, drawers under the front seats and a useful split folding rear seat backrest.



The electrically heated and adjustable body-coloured door mirrors with integrated indicators enhance the exterior of the new Polo and can be easily operated from the comfort of the driver's seat.



Sun visors incorporating an illuminated vanity mirror for both the driver and front passenger are a handy and practical feature.



Controls for the electric front and rear windows, including one-touch opening and closing facility, and the electrically heated and adjustable door mirror switch are conveniently located in the driver's door.



'Castille' 6J x 15 alloy wheels with 185/60 R15 tyres and anti-theft wheel bolts add a contemporary finishing touch to the exterior.



Easy-to-use 'Climatic' air conditioning ensures a pleasant temperature throughout the vehicle, so every journey will be a comfortable one whatever the temperature outside.

The new Polo SEL

If you want a car that goes one step further then the new Polo SEL is the one for you. To start with, 16 inch 'Navarre' alloy wheels add a truly individual look to the exterior, enhanced by body-coloured door handles and door mirrors, front fog lights and a chrome trimmed radiator grille louvre insert and front air intake surround. Inside the new Polo SEL, the luxury continues with a three-spoke leather trimmed steering wheel featuring a chrome insert, leather-trimmed gear knob and handbrake grip and front footwell illumination. The RCD 310 radio/MP3 compatible CD player with six speakers offers great acoustics and there's also a Multi Device Interface (MDI) in the glovebox providing USB and iPod connectivity. The height adjustable driver and front passenger seats ensure comfort on long journeys, while the multifunction computer (Midline) is a particularly useful addition, providing essential information as you drive, such as instant and average fuel consumption, fuel range, exterior temperature and clock. 'Climatic' semi-automatic air conditioning ensures an ambient temperature throughout and a handy tyre pressure indicator displays any loss in tyre pressure. Completing the picture is an alarm with interior protection, a front centre armrest with storage compartment, and high quality carpet mats in the front and rear.



The multifunction computer (Midline) displays current fuel consumption figures on the monitor screen, and also makes recommendations for optimal gear changes on manual diesel models.



The new Polo's centre console houses the RCD 310 radio/MP3 compatible CD player, keeps all important functions within easy reach, and is testament to Volkswagen's passion for build quality, ergonomic design, safety and passenger comfort.



The Multi Device Interface (MDI) connects you to external audio sources, such as USB or iPod, which you can operate via the radio or optional navigation/radio system.



In the event of a change in air pressure, the tyre pressure indicator alerts the driver via a warning in the multifunction display. Not only does correct tyre pressure ensure a high degree of safety, but it also helps extend the life of the tyres and reduces fuel consumption.



'Navarre' 7J x 16 alloy wheels with 215/45 R16 tyres and anti-theft wheel bolts complements the overall design of the new Polo SEL perfectly, adding a truly individual touch.



Equipment and styling combine in harmony to produce an interior which exudes comfort and practicality, ensuring that every journey is a pleasurable experience. Interior shown is new Polo SEL in Seashell Beige 'Strata' cloth upholstery (also available in Titan Black) with optional electronic climate control air conditioning and metallic paint.

Sometimes you just have to stop and admire the view.



Model shown is new Polo SEL with optional 17" 'Boavista' alloy wheels.

Safety

The new Polo not only delivers new levels of driving fun, but also, a wealth of advanced safety equipment, helping to make every journey as safe as possible. Features include a sophisticated airbag system, comprising of driver's and front passenger's airbags and side head/thorax airbag system which provide occupant protection. Add to that an Anti-lock Braking System (ABS) with Hydraulic Brake Assist (HBA) and an Electronic Stabilisation Programme (ESP) which recognises critical driving situations and reacts in milliseconds by braking individual wheels and reducing the engine's output to bring the vehicle under control. Front whiplash-optimised head restraints, three rear head restraints, warning buzzer and light for seat belts if unfastened and Isofix child seat preparation provide additional all-round safety. Such a high level of protection means you've nothing else to think about except sitting back, relaxing and enjoying the drive.



The two **whiplash-optimised front head restraints** not only ensure additional comfort, but also provide particularly effective support for the head and spine in the event of a collision.



Part of the optional **Sensor pack, rear parking sensors** emit acoustic signals, alerting you to obstacles in your way when parking: The closer you are to an object, the faster the sound frequency. They also offer a visual display of the vehicle's proximity to obstacles on your radio display.

Optional on Moda, SE and SEL models.



In an emergency situation, all passengers can rely on the safety of the new Polo, which includes **driver's and front passenger's seat airbags as well as a side head/thorax airbag system**. Deployment of the airbags is activated by crash sensors. When an impact is registered, the airbag control unit ignites the gas generator, which then inflates the airbag within less than 40 milliseconds, helping to reduce injuries significantly. Also available as an option is a curtain airbag system for front and rear seat passengers and front passenger's airbag deactivation, should you require it.

Curtain airbag system and front passenger's airbag deactivation are optional on all models. Specify the curtain airbag system, and conventional side impact airbags are fitted in the driver's and front passenger's seats, in lieu of the side head/thorax airbag system. Image shown is for illustration purposes only and may not necessarily reflect UK specification.



The **Electronic Stabilisation Programme (ESP)** recognises critical driving situations and reacts in milliseconds by targeting brake and management systems, controlling the speed of individual wheels and helping to bring the vehicle under control. As a result the vehicle achieves maximum directional stability.



A **high level third brake light** integrated into the rear spoiler enhances aesthetics and improves vehicle safety.



As part of the **Sensor pack, the flat tyre indicator** will alert you to any change in tyre pressure via a warning in the multifunction display, advising you to rectify the situation.

Standard on SEL models and optional as part of the Sensor pack on Moda and SE models.



Front fog lights add a striking look to the front of the vehicle and provide safety in bad weather or where there is poor visibility. Available in conjunction with front fog lights, is the **static cornering function**, which illuminates when indicating or turning at low speed, providing additional safety.

Front fog lights are standard on Moda and SEL and optional on SE models. Static cornering function is optional on Moda, SE and SEL models.

Let the adventure begin.



Model shown is new Polo SEL with optional metallic paint.



Model shown is new Polo SEL with optional 17" 'Boavista' alloy wheels.

Optional equipment

Once you're on the road, you'll find it's the extra details that add a new dimension to your journey. Whether you're looking for a state-of-the-art music system or perfect air conditioning for your passengers, a number of options are available, enabling you to equip your new Polo to your individual needs.



The **multifunction leather trimmed steering wheel** is exceptionally user friendly and enables you to operate the radio without taking your hands off the wheel. The handbrake grip and gear knob are also leather trimmed, adding a touch of elegance and refinement to the interior, and providing particularly good grip when driving. Also included with this option is a multifunction computer (Midline) which provides important information about your journey. Optional on Moda, SE and SEL models.

Interior shown is SE with optional multifunction leather trimmed steering wheel and electronic climate control air conditioning.



Optional 'Alcantara' sports seats add a luxurious, sporty look to the interior. Soft and supple, yet hard-wearing and durable, its finish provides the ultimate in comfort and practicality, combining with the seat design to give exceptional lumbar support and ensure total relaxation on long journeys. Optional on SEL models.

Interior shown is SEL.



The **multifunction computer (Midline)** provides essential information about your journey, such as current and average fuel consumption, average speed, distance travelled, exterior temperature and total mileage. On all manual diesel models an additional feature provides a visual gear change recommendation for optimum fuel consumption. Standard on SEL models. The multifunction computer (Midline) is available as part of the optional Sensor pack, or in conjunction with the optional multifunction leather trimmed steering wheel on Moda, SE and SEL models.



Forming part of the **Sensor pack**, the **flat tyre indicator** will alert you to any change in tyre pressure via a warning in the multifunction display, advising you to rectify the situation. At speeds of over 19 mph, **cruise control** keeps your selected speed constant, enabling you to relax on longer journeys, without having to keep an eye on your speedometer. **Rear parking sensors** emit acoustic signals, alerting you to obstacles in your way when parking. The closer you are to an object, the faster the sound frequency. They also offer a visual display of the vehicle's proximity to obstacles on the screen of the radio system. Optional on Moda, SE and SEL models.

Flat tyre indicator is standard on SEL models.



The RCD 510 touch-screen radio/dash-mounted MP3 compatible six CD autochanger features a large 6½ inch colour display, with intuitive menu navigation and touch-screen operation. It also features an AUX-in socket for connection to an external multimedia source (e.g. iPod or MP3 player) and an SD memory card slot. Optional on Moda, SE and SEL models.



The RNS 310 touch-screen navigation/radio system features a 5 inch colour display for clear map navigation, guiding you to your destination using all but the last two digits of a UK postcode. The MP3 compatible single CD player will play music CDs even when the navigation system is being used, while music can also be played via the SD card slot. Optional on Moda, SE and SEL models.



The RCD 310 radio/MP3 compatible CD player features six speakers with an output of 6 x 20 watts. It also features an AUX-in socket for connection to an external multimedia source (e.g. iPod or MP3 player). Optional on S models. The RCD 310 can also be specified with **Multi Device Interface (MDI)** with iPod and USB cables enabling you to connect and charge a compatible device, while track selection is viewed and selected via the RCD 310's audio display. Optional on S models. The **Multi Device Interface (MDI)** is also available as an option on SE models.

RCD 310 radio/MP3 compatible CD player is standard on Moda, SE and SEL models. Multi Device Interface (MDI) is standard on Moda and SEL models.

Also available, but not shown:

The **DAB digital radio receiver** is available as an upgrade for your RCD 310 or RCD 510, enabling you to listen to all the digital stations available in crystal digital sound. Optional on Moda, SE and SEL models.



The newly designed **electronic climate control air conditioning system** is extremely user-friendly, providing your required cabin temperature quickly and efficiently, while maintaining your selected temperature. Optional on SA/C, Moda A/C, SE and SEL models.



Headlight washers form part of the **Winter pack**, helping to improve safety in rain, snow and poor road conditions. Heated front seats provide comfort during cold weather, while heated windscreen washer jets help ensure visibility is maintained in the Winter months. Optional on all models.



Luxurious and durable **carpet mats for the front and rear** are a welcome addition to the new Polo, helping to keep the interior looking its best. Standard on SEL and optional on S, Moda and SE models.



Heated front seats, which form part of the **Winter pack**, greatly increase comfort levels, especially in Winter, providing heat faster than the car's heating system. Optional on all models.



The **Convenience pack** comprises an automatically dimming interior rear-view mirror which darkens when a following car's headlights are too high, and rain sensor, which automatically activates and controls the windscreen wipers when it detects moisture on the windscreen. Optional on Moda, SE and SEL models.

Wheels



'Boavista' 7J x 17 inch alloy wheels with 215/40 R17 tyres and are both eye-catching and stylish, and are fitted with anti-theft wheel bolts. Optional on SEL models.



14 inch steel wheels with 175/70 R14 tyres and full size wheel trims feature a robust seven spoke design, adding a sporty touch. Standard on S models.



'Cadiz' 6J x 15 alloy wheels with 195/55 R15 tyres and anti-theft wheel bolts add a particularly dynamic look, emphasising the Polo's sporty aesthetics. Standard on Moda and optional on S models.



'Castille' 6J x 15 alloy wheels with 185/60 R15 tyres and anti-theft wheel bolts add a contemporary finishing touch to the exterior. Standard on SE models.



'Navarre' 7J x 16 alloy wheels with 215/45 R16 tyres and anti-theft wheel bolts complements the overall design of the new Polo perfectly, adding a truly individual touch. Standard on SEL and optional on Moda and SE models.



**You'll just want to keep on driving,
late into the night.**

Model shown is new Polo SEL with optional 17" 'Boavista' alloy wheels.

Paint



Black
Non-Metallic
A1



Sunset Orange
Metallic
4S



Candy White
Non-Metallic
B4



Reflex Silver
Metallic
8E



Flash Red
Non-Metallic
D8



Shadow Blue
Metallic
P6



Sea Blue
Non-Metallic
F4



Nimbus Grey
Metallic
U5



Savanah Yellow
Non-Metallic
H5



Deep Black
Pearl Effect
2T

■ Standard ■ Optional at extra cost

Please note: Screen technology does not allow for exact reproduction of the paint colours.

Upholstery

Titan Black
'Cirrus' cloth
BY

Standard on S and S A/C



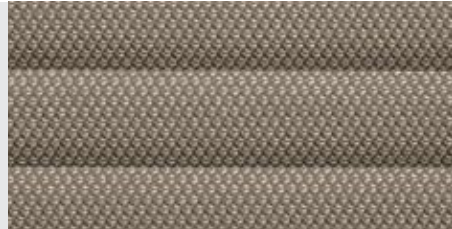
Titan Black
'Strata' cloth
HX

Standard on Moda, Moda A/C, SE and SEL



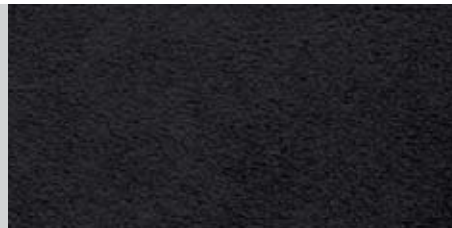
Seashell Beige
'Strata' cloth
HY

Standard on Moda, Moda A/C, SE and SEL



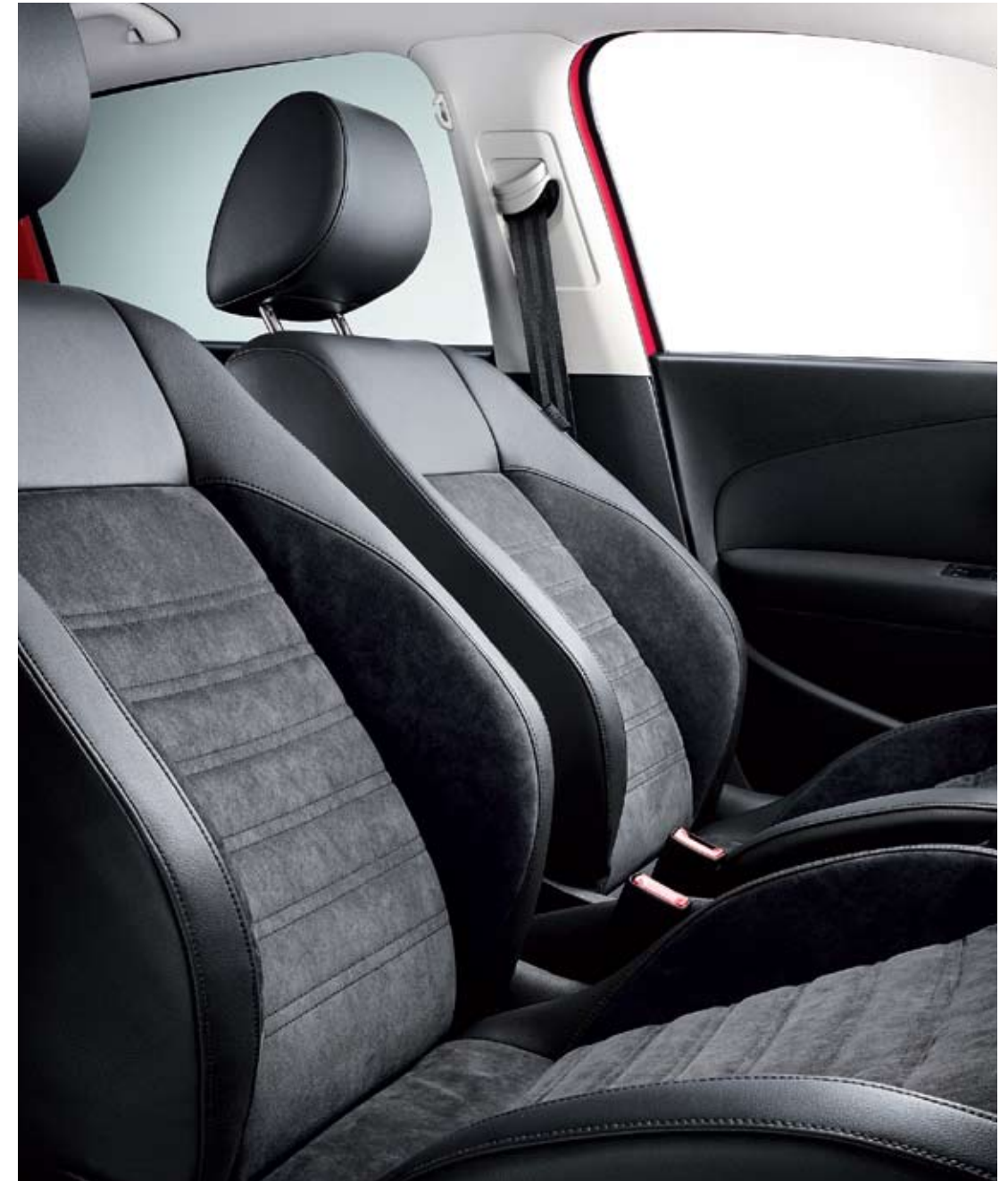
Titan Black
'Alcantara' sports seats with 'Microfibre' side bolsters
DM

Optional on SEL



Standard Optional

Please note: Screen technology does not allow for exact reproduction of the upholstery colours.



Optional Alcantara upholstery with Sports seats adds a luxurious, sporty look to the interior.

Interior shown is SEL.

Combinations

	Seat upholstery	Carpet	Dashboard	Black (A1) *	Candy White (B4)	Flash Red (D8)	Sea Blue (F4)	Savanah Yellow (H5) *	Sunset Orange Metallic (4S) *	Reflex Silver Metallic (8E) *	Shadow Blue Metallic (P6) *	Nimbus Grey Metallic (U5) *	Deep Black Pearl Effect (2T) *
'Cirrus' cloth Standard on S and S A/C	Titan Black (BY)	Black	Black/Black	●	●	●	●	●	○	○	○	○	○
'Strata' cloth Standard on Moda, Moda A/C, SE and SEL	Titan Black (HX)	Black	Black/Black	●	●	●	●	●	○	○	○	○	○
	Seashell Beige (HY)	Black	Black/Black	●	●	-	●	-	-	○	○	○	○
'Alcantara' sports seats with 'Microfibre' side bolsters* Optional on SEL	Titan Black (DM)	Black	Black/Black	○	○	○	○	○	○	○	○	○	○

* Black (A1), Savanah Yellow (H5), metallic and pearl effect paints and 'Alcantara' upholstery are optional at extra cost.

- Standard.
- Optional at extra cost.
- Not available.

Refined engineering.



Model shown is new Polo SEL with optional 17" 'Boavista' alloy wheels, Winter pack and Convenience pack.



Model shown is new Polo SEL with optional 17" 'Boavista' alloy wheels.

Engines and gearboxes

A selection of powerful engine variants means you can enjoy exceptional performance, impressive pulling power and smooth handling alongside ground-breaking economy. The new Polo offers a choice of petrol and diesel engines, all designed to deliver dynamic performance, impressive fuel economy and low emissions. The range starts with two 1.2 litre petrol units which develop 60 PS and 70 PS. These three cylinder engines are both capable of achieving 51.4 mpg over the Combined* fuel cycle. The third petrol engine, a 1.4 litre unit, is also available with a seven speed auto DSG gearbox developing 85 PS and capable of 48.7 mpg over the Combined* fuel cycle. If it's a diesel you desire, two 1.6 litre diesel engines featuring common rail technology are sure to be to your liking. Developing 75 PS and 90 PS, both engines produce an impressive 112 g/km of CO₂ and an equally impressive 65.7 mpg on the Combined* fuel cycle. Kinder to your pocket and the environment, what better way to enjoy your new Polo?

* Please see the Engines section for fuel consumption and CO₂ emissions figures.



The dual clutch Direct Shift Gearbox (DSG) represents a milestone in the development of the latest gearbox technology. This innovative automatic gearbox from Volkswagen shifts smoothly and imperceptibly, within a hundredth of a second, into the pre-selected next gear, without disrupting the power. Such extremely short reaction times and direct response behaviour make sporty acceleration even more fun. The seven speed gearbox is not only highly dynamic, but also extremely fuel-efficient.



The five speed manual gearbox transmits power with short, accurate shifts and very smooth handling, making it easy to use at the right engine speed.



Featuring Volkswagen's latest common rail technology, the new Polo's diesel engines not only ensure excellent overall performance, fuel consumption and CO₂ emissions, but they are also incredibly quiet. As part of Volkswagen's continued desire to satisfy European emissions legislation, the new Polo's diesel engines are also fitted with a Diesel Particulate Filter (DPF) as standard. This is part of the exhaust system responsible for cleaning the exhaust gases before they enter the atmosphere. In addition to converting the harmful exhaust gases in the same way as a conventional catalytic converter, the DPF uses advanced technology to reduce the emission of black smoke and soot. It filters the exhaust gases and particles before they leave the vehicle exhaust system, resulting in a cleaner environment and less pollution entering the atmosphere.

S, S A/C, Moda, Moda A/C, SE – 1.2 litre 60 PS

Technical specification

		Manual	
Engine	Engine type	Three cylinder petrol	
	Cubic capacity, ltrs/cc	1.2/1198	
	Max. output, PS ⁽⁰¹⁾ /kW at rpm	60/44 5200	
	Max. torque, lbs.ft/Nm at rpm	80/108 3000	
	Gearbox	Five speed manual	
Weights, kgs	Unladen weight ⁽⁰²⁾	1092	
	Gross vehicle weight	1550	
	Payload ⁽⁰²⁾	533	
	Axle load limit: Front Rear	830 770	
Trailer load limits, kgs ⁽⁰³⁾	Braked 12% incline	800	
	Unbraked	520	
	Towbar load limit	50	
	Max. roof load	75	
Performance	Top speed (where the law permits), mph (km/h)	98 (157)	
	Acceleration, secs 0 - 62 mph	16.1	
	ABI insurance group, 1 - 20 (1 - 50) [†]	2E (4E)	
Environmental information	Fuel grade, minimum	Unleaded, 95 RON ⁽⁰⁴⁾	
	Fuel tank capacity, galls/ltrs	10.0/45	
	Official fuel consumption, mpg/ltr per 100 km ⁽⁰⁶⁾		
	Urban	38.7/7.3	
	Extra-urban	62.8/4.5	
	Combined	51.4/5.5	
	Official CO ₂ emission, g/km ⁽⁰⁷⁾	128	
Emission class	EURO 5		
Noise, dB	73.0		

† Please note, from December 2009 the insurance industry will switch from the current rating system of groups 1 - 20 to a new 1 - 50 insurance scale.

Notes.

- 01) The maximum power output figures are quoted in PS (or Pferdestärke, which is the metric equivalent of horsepower). To convert from metric to imperial horsepower, divide the PS figure by 1.0139.
- 02) Figures are calculated in accordance with manufacturer's criteria. The individual unladen weight depends on the specification of the vehicle, this then reduces the possible payload accordingly. The unladen weight and payload both include the fuel tank 90% full, driver (68 kg) and luggage (7 kg) in line with EU directive 95/48.
- 03) With increasing altitude the engine performance diminishes. From 1,000 m above sea level and for every 1,000 m thereafter 10% of the vehicle/trailer weight (trailer weight + gross vehicle weight) must be deducted.
- 04) Thanks to the knock control, unleaded four star (at least 95 RON) can be used instead of unleaded Super plus. In order to achieve maximum fuel consumption benefits on the TSI engine, Ultra Low Sulphur Petrol (ULSP) must be used.
- 05) The use of RME and FAME (bio diesel) is not possible.
- 06) Official fuel consumption according to EU Directive 99/94. The consumption calculation according to 1999/100/EC is based on the actual unladen weight of the vehicle. Additional specifications can lead to a higher weight class and hence to consumption figures of this higher weight class. The driving style, road and traffic conditions, environmental influences and vehicle condition can in practice lead to consumption figures, which may differ from those calculated with this standard.
- 07) The weight of a vehicle will influence the level of CO₂ emission it produces; as a result, vehicles with higher levels of specification and factory-fitted options may emit higher levels of CO₂.

S, S A/C, Moda, Moda A/C, SE – 1.2 litre 70 PS

Technical specification

		Manual	
Engine	Engine type	Three cylinder petrol	
	Cubic capacity, ltrs/cc	1.2/1198	
	Max. output, PS ⁽⁰¹⁾ /kW at rpm	70/51 5400	
	Max. torque, lbs.ft/Nm at rpm	83/112 3000	
	Gearbox	Five speed manual	
Weights, kgs	Unladen weight ⁽⁰²⁾	1092	
	Gross vehicle weight	1550	
	Payload ⁽⁰²⁾	533	
	Axle load limit: Front Rear	830 770	
Trailer load limits, kgs ⁽⁰³⁾	Braked 12% incline	800	
	Unbraked	530	
	Towbar load limit	50	
	Max. roof load	75	
Performance	Top speed (where the law permits), mph (km/h)	103 (165)	
	Acceleration, secs 0 - 62 mph	14.1	
	ABI insurance group, 1 - 20 (1 - 50) [†]	3E (5E)	
Environmental information	Fuel grade, minimum	Unleaded, 95 RON ⁽⁰⁴⁾	
	Fuel tank capacity, galls/ltrs	10.0/45	
	Official fuel consumption, mpg/ltr per 100 km ⁽⁰⁶⁾		
	Urban	38.7/7.3	
	Extra-urban	62.8/4.5	
	Combined	51.4/5.5	
	Official CO ₂ emission, g/km ⁽⁰⁷⁾	128	
Emission class	EURO 5		
Noise, dB	73.0		

† Please note, from December 2009 the insurance industry will switch from the current rating system of groups 1 - 20 to a new 1 - 50 insurance scale.

Notes.

- 01) The maximum power output figures are quoted in PS (or Pferdestärke, which is the metric equivalent of horsepower). To convert from metric to imperial horsepower, divide the PS figure by 1.0139.
- 02) Figures are calculated in accordance with manufacturer's criteria. The individual unladen weight depends on the specification of the vehicle, this then reduces the possible payload accordingly. The unladen weight and payload both include the fuel tank 90% full, driver (68 kg) and luggage (7 kg) in line with EU directive 95/48.
- 03) With increasing altitude the engine performance diminishes. From 1,000 m above sea level and for every 1,000 m thereafter 10% of the vehicle/trailer weight (trailer weight + gross vehicle weight) must be deducted.
- 04) Thanks to the knock control, unleaded four star (at least 95 RON) can be used instead of unleaded Super plus. In order to achieve maximum fuel consumption benefits on the TSI engine, Ultra Low Sulphur Petrol (ULSP) must be used.
- 05) The use of RME and FAME (bio diesel) is not possible.
- 06) Official fuel consumption according to EU Directive 99/94. The consumption calculation according to 1999/100/EC is based on the actual unladen weight of the vehicle. Additional specifications can lead to a higher weight class and hence to consumption figures of this higher weight class. The driving style, road and traffic conditions, environmental influences and vehicle condition can in practice lead to consumption figures, which may differ from those calculated with this standard.
- 07) The weight of a vehicle will influence the level of CO₂ emission it produces; as a result, vehicles with higher levels of specification and factory-fitted options may emit higher levels of CO₂.

SE, SEL – 1.4 litre 85 PS

Technical specification

		Manual	Automatic DSG
Engine	Engine type	Four cylinder petrol	Four cylinder petrol
	Cubic capacity, ltrs/cc	1.4/1390	1.4/1390
	Max. output, PS ⁽⁰¹⁾ /kW at rpm	85/63 5000	85/63 5000
	Max. torque, lbs.ft/Nm at rpm	97/132 3800	97/132 3800
	Gearbox	Five speed manual	Seven speed auto DSG
Weights, kgs	Unladen weight ⁽⁰²⁾	1095	1129
	Gross vehicle weight	1550	1580
	Payload ⁽⁰²⁾	530	526
	Axle load limit: Front Rear	830 770	860 770
Trailer load limits, kgs ⁽⁰³⁾	Braked 12% incline	1000	1000
	Unbraked	530	550
	Towbar load limit	50	50
	Max. roof load	75	75
Performance	Top speed (where the law permits), mph (km/h)	110 (177)	110 (177)
	Acceleration, secs 0 - 62 mph	11.9	11.9
	ABI insurance group, 1 - 20 (1 - 50) [†]	4E (9E)	4E (9E)
Environmental information	Fuel grade, minimum	Unleaded, 95 RON ⁽⁰⁴⁾	Unleaded, 95 RON ⁽⁰⁴⁾
	Fuel tank capacity, galls/ltrs	10.0/45	10.0/45
	Official fuel consumption, mpg/ltr per 100 km ⁽⁰⁶⁾		
	Urban	35.3/8.0	36.7/7.7
	Extra-urban	60.1/4.7	60.1/4.7
	Combined	47.9/5.9	48.7/5.8
	Official CO ₂ emission, g/km ⁽⁰⁷⁾	139	135
	Emission class	EURO 5	EURO 5
Noise, dB	73.0	73.0	

† Please note, from December 2009 the insurance industry will switch from the current rating system of groups 1 - 20 to a new 1 - 50 insurance scale.

Notes.

- 01) The maximum power output figures are quoted in PS (or Pferdestärke, which is the metric equivalent of horsepower). To convert from metric to imperial horsepower, divide the PS figure by 1.0139.
- 02) Figures are calculated in accordance with manufacturer's criteria. The individual unladen weight depends on the specification of the vehicle, this then reduces the possible payload accordingly. The unladen weight and payload both include the fuel tank 90% full, driver (68 kg) and luggage (7 kg) in line with EU directive 95/48.
- 03) With increasing altitude the engine performance diminishes. From 1,000 m above sea level and for every 1,000 m thereafter 10% of the vehicle/trailer weight (trailer weight + gross vehicle weight) must be deducted.
- 04) Thanks to the knock control, unleaded four star (at least 95 RON) can be used instead of unleaded Super plus. In order to achieve maximum fuel consumption benefits on the TSI engine, Ultra Low Sulphur Petrol (ULSP) must be used.
- 05) The use of RME and FAME (bio diesel) is not possible.
- 06) Official fuel consumption according to EU Directive 99/94. The consumption calculation according to 1999/100/EC is based on the actual unladen weight of the vehicle. Additional specifications can lead to a higher weight class and hence to consumption figures of this higher weight class. The driving style, road and traffic conditions, environmental influences and vehicle condition can in practice lead to consumption figures, which may differ from those calculated with this standard.
- 07) The weight of a vehicle will influence the level of CO₂ emission it produces; as a result, vehicles with higher levels of specification and factory-fitted options may emit higher levels of CO₂.

SE – 1.6 litre TDI 75 PS

Technical specification

		Manual	
Engine	Engine type	Four cylinder diesel	
	Cubic capacity, ltrs/cc	1.6/1598	
	Max. output, PS ⁽⁰¹⁾ /kW at rpm	75/55 4000	
	Max. torque, lbs.ft/Nm at rpm	144/195 1500-2500	
	Gearbox	Five speed manual	
Weights, kgs	Unladen weight ⁽⁰²⁾	1182	
	Gross vehicle weight	1650	
	Payload ⁽⁰²⁾	543	
	Axle load limit: Front Rear	930 770	
Trailer load limits, kgs ⁽⁰³⁾	Braked 12% incline	1000	
	Unbraked	570	
	Towbar load limit	50	
	Max. roof load	75	
Performance	Top speed (where the law permits), mph (km/h)	106 (170)	
	Acceleration, secs 0 - 62 mph	13.9	
	ABI insurance group, 1 - 20 (1 - 50) [†]	3E (10E)	
Environmental information	Fuel grade, minimum	Diesel ⁽⁰⁵⁾	
	Fuel tank capacity, galls/ltrs	10.0/45	
	Official fuel consumption, mpg/ltr per 100 km ⁽⁰⁶⁾		
	Urban	54.3/5.2	
	Extra-urban	76.3/3.7	
	Combined	65.7/4.3	
	Official CO ₂ emission, g/km ⁽⁰⁷⁾	112	
Emission class	EURO 5		
Noise, dB	72.0		

† Please note, from December 2009 the insurance industry will switch from the current rating system of groups 1 - 20 to a new 1 - 50 insurance scale.

Notes.

- 01) The maximum power output figures are quoted in PS (or Pferdestärke, which is the metric equivalent of horsepower). To convert from metric to imperial horsepower, divide the PS figure by 1.0139.
- 02) Figures are calculated in accordance with manufacturer's criteria. The individual unladen weight depends on the specification of the vehicle, this then reduces the possible payload accordingly. The unladen weight and payload both include the fuel tank 90% full, driver (68 kg) and luggage (7 kg) in line with EU directive 95/48.
- 03) With increasing altitude the engine performance diminishes. From 1,000 m above sea level and for every 1,000 m thereafter 10% of the vehicle/trailer weight (trailer weight + gross vehicle weight) must be deducted.
- 04) Thanks to the knock control, unleaded four star (at least 95 RON) can be used instead of unleaded Super plus. In order to achieve maximum fuel consumption benefits on the TSI engine, Ultra Low Sulphur Petrol (ULSP) must be used.
- 05) The use of RME and FAME (bio diesel) is not possible.
- 06) Official fuel consumption according to EU Directive 99/94. The consumption calculation according to 1999/100/EC is based on the actual unladen weight of the vehicle. Additional specifications can lead to a higher weight class and hence to consumption figures of this higher weight class. The driving style, road and traffic conditions, environmental influences and vehicle condition can in practice lead to consumption figures, which may differ from those calculated with this standard.
- 07) The weight of a vehicle will influence the level of CO₂ emission it produces; as a result, vehicles with higher levels of specification and factory-fitted options may emit higher levels of CO₂.

SEL – 1.6 litre TDI 90 PS

Technical specification

		Manual	
Engine	Engine type	Four cylinder diesel	
	Cubic capacity, ltrs/cc	1.6/1598	
	Max. output, PS ⁽⁰¹⁾ /kW at rpm	90/66 4200	
	Max. torque, lbs.ft./Nm at rpm	170/230 1500-2500	
	Gearbox	Five speed manual	
Weights, kgs	Unladen weight ⁽⁰²⁾	1182	
	Gross vehicle weight	1650	
	Payload ⁽⁰²⁾	543	
	Axle load limit: Front Rear	930 770	
Trailer load limits, kgs ⁽⁰³⁾	Braked 12% incline	1200	
	Unbraked	570	
	Towbar load limit	50	
	Max. roof load	75	
Performance	Top speed (where the law permits), mph (km/h)	112 (180)	
	Acceleration, secs 0 - 62 mph	11.5	
	ABI insurance group, 1 - 20 (1 - 50) [†]	4E (13E)	
Environmental information	Fuel grade, minimum	Diesel ⁽⁰⁵⁾	
	Fuel tank capacity, galls/ltrs	10.0/45	
	Official fuel consumption, mpg/ltr per 100 km ⁽⁰⁶⁾		
	Urban	54.3/5.2	
	Extra-urban	76.3/3.7	
	Combined	65.7/4.3	
	Official CO ₂ emission, g/km ⁽⁰⁷⁾	112	
Emission class	EURO 5		
Noise, dB	69.0		

† Please note, from December 2009 the insurance industry will switch from the current rating system of groups 1 - 20 to a new 1 - 50 insurance scale.

Notes.

- 01) The maximum power output figures are quoted in PS (or Pferdestärke, which is the metric equivalent of horsepower). To convert from metric to imperial horsepower, divide the PS figure by 1.0139.
- 02) Figures are calculated in accordance with manufacturer's criteria. The individual unladen weight depends on the specification of the vehicle, this then reduces the possible payload accordingly. The unladen weight and payload both include the fuel tank 90% full, driver (68 kg) and luggage (7 kg) in line with EU directive 95/48.
- 03) With increasing altitude the engine performance diminishes. From 1,000 m above sea level and for every 1,000 m thereafter 10% of the vehicle/trailer weight (trailer weight + gross vehicle weight) must be deducted.
- 04) Thanks to the knock control, unleaded four star (at least 95 RON) can be used instead of unleaded Super plus. In order to achieve maximum fuel consumption benefits on the TSI engine, Ultra Low Sulphur Petrol (ULSP) must be used.
- 05) The use of RME and FAME (bio diesel) is not possible.
- 06) Official fuel consumption according to EU Directive 99/94. The consumption calculation according to 1999/100/EC is based on the actual unladen weight of the vehicle. Additional specifications can lead to a higher weight class and hence to consumption figures of this higher weight class. The driving style, road and traffic conditions, environmental influences and vehicle condition can in practice lead to consumption figures, which may differ from those calculated with this standard.
- 07) The weight of a vehicle will influence the level of CO₂ emission it produces; as a result, vehicles with higher levels of specification and factory-fitted options may emit higher levels of CO₂.

Technology

Engines

- Front transverse-installed engine
- 1.2 litre/60 PS ⁽⁰¹⁾ (44 kW) petrol engine: EU5 compliant three cylinder in-line engine, four valves per cylinder. Air filter in wheel housing, chain driven camshaft, split cylinder block, crankshaft drive with balancer shaft, cross-flow cooling in cylinder head, standing oil filter, non-return fuel system, crankcase breather and ventilation system, single spark ignition coils with integrated output stage. Three-way catalytic converters with lambda control
- 1.2 litre/70 PS ⁽⁰¹⁾ (51 kW) petrol engine: EU5 compliant three cylinder in-line engine, four valves per cylinder. Air filter in wheel housing, chain driven camshaft, split cylinder block, crankshaft drive with balancer shaft, cross-flow cooling in cylinder head, standing oil filter, non-return fuel system, crankcase breather and ventilation system, single spark ignition coils with integrated output stage. Three-way catalytic converters with lambda control
- 1.4 litre/85 PS ⁽⁰¹⁾ (63 kW) petrol engine: EU5 compliant four cylinder in-line engine, four valves per cylinder. Toothed belt pulley on crankshaft with elliptic shape to reduce toothed belt vibrations, coated toothed belt, intake pipe with modular design, crankcase breather and ventilation system with diaphragm valve to regulate pressure in cylinder block, pre-warming for crankcase ventilation integrated in cooling system. Starter and main catalytic converter with lambda control
- 1.6 litre/75 PS ⁽⁰¹⁾ (55 kW) common rail diesel engine: EU5 emissions standard, four cylinder in-line engine, four valves per cylinder, aluminium-silicon alloy cylinder head, reduced piston crown volume (improves swirl generation in the cylinder), toothed backlash compensator, intake manifold with electric continual tumble flap control, electronically controlled common rail direct injection fuel system with Bosch high pressure pump (up to 1800 bar) and 8-hole piezo injector units, pre-supply electronic fuel pump, oil cooler, intercooler, low temperature exhaust gas recirculation, additional coolant pump, turbocharger with variable turbine geometry, catalytic converter and Diesel Particulate Filter (DPF)
- 1.6 litre/90 PS ⁽⁰¹⁾ (66 kW) common rail diesel engine: EU5 emissions standard, four cylinder in-line engine, four valves per cylinder, aluminium-silicon alloy cylinder head, reduced piston crown volume (improves swirl generation in the cylinder), toothed backlash compensator, intake manifold with electric continual tumble flap control, electronically controlled common rail direct injection fuel system with Bosch high pressure pump (up to 1800 bar) and 8-hole piezo injector units, pre-supply electronic fuel pump, oil cooler, intercooler, low temperature exhaust gas recirculation, additional coolant pump, turbocharger with variable turbine geometry, catalytic converter and Diesel Particulate Filter (DPF)

Transmission

- Front wheel drive through asbestos-free single-plate dry clutch. Hydraulic clutch-mechanism. Six speed manual or seven speed automatic DSG gearbox with double joint half axles
- Five speed manual: 1.2 litre 60 PS, 1.2 litre 70 PS, 1.4 litre 85 PS, 1.6 litre TDI 75 PS, 1.6 litre TDI 90 PS
- Seven speed automatic DSG: 1.4 litre 85 PS

Running gear

- Electronic Stabilisation Programme (ESP) including Electronic Differential Lock (EDL), Traction Control (ASR) and Countersteer Support
- Front suspension through coil springs with telescopic shock absorbers, all elements integrated in chassis legs
- Rear suspension with gas pressure shock absorbers and separate springs
- Wheel control: front through chassis legs and (lower) triangular wishbones (directionally stabilising steering roll radius)
- Wheel control: rear through four-link suspension with independent wheel suspension
- Front and rear anti-roll bar

Steering

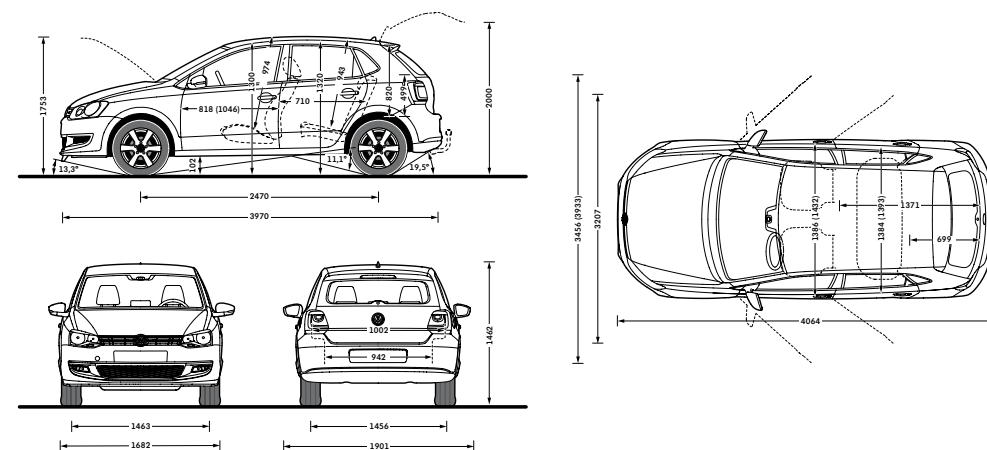
- Electro-mechanical steering rack
- Collapsible, height and lengthways adjustable safety steering column

Brakes

- Electronically controlled Anti-lock Braking System (ABS) with Electronic Brake-pressure Distribution (EBD)
- Diagonal twin-circuit brake system with front and rear disc brakes (front ventilated)
 - Rear drum brakes (1.2 litre 60 PS, 1.2 litre 70 PS and 1.6 litre TDI 75 PS)
- Asbestos-free brake pads
- Hydraulic Brake Assist (HBA)

Dimensions

Exterior dimensions	
Length, mm	3970
Width – including door mirrors, mm	1901
Width – excluding door mirrors, mm	1682
Width – opened front/rear doors, mm	3456/3207
Height, mm	1462
Height – opened bonnet/floor, mm	1753
Height – opened tailgate/floor, mm	2000
Wheelbase, mm	2470
Turning circle, m	10.6
Interior dimensions	
Effective headroom – front, mm	974
Effective headroom – rear, mm	943



Volkswagen service

The Volkswagen Warranty.

Three-year Warranty.

All Volkswagen new Polos come with a three-year/60,000 miles warranty, which protects your car against the failure of most mechanical and electrical components due to manufacturing defects. This comprises a two-year manufacturer's warranty with unlimited mileage plus a further one-year/60,000 miles (whichever is soonest) Retailer Warranty. Should the mileage exceed 60,000 miles within the first two years, the manufacturer's two-year warranty will still be valid. If an additional warranty for subsequent years or higher mileage is desired, it may be purchased from an authorised Volkswagen retailer or repairer; however, this additional warranty must be purchased before the mileage reaches 60,000*. Full details of the three-year warranty are available from your authorised Volkswagen retailer or repairer.

* All warranty work must be completed by an authorised Volkswagen retailer or repairer.

Three-year Paint Warranty.

The paintwork of the new Polo is covered against manufacturing defects for a period of three years. Naturally, the new Polo must be cared for in compliance with the operating instructions which will be found in your vehicle handbook. Please consult your authorised Volkswagen retailer or repairer for full warranty details.

12-year Body Protection Warranty.

The internal body sections and panels of the new Polo are covered against rusting through from the inside for 12 years. Naturally, the new Polo must be cared for in compliance with the operating instructions. Please consult your authorised Volkswagen retailer or repairer for full warranty details.

Approved Accessories.

A comprehensive range of accessories from alloy wheels to carpet mats is available to complement the factory-fitted option list. Volkswagen approved accessories purchased from and fitted by your authorised Volkswagen retailer at the point of vehicle sale will also benefit from the three-year vehicle warranty.

Service Intervals.

Volkswagen are pleased to offer you a choice on how your new Polo is serviced. The appropriate selection is entirely dependent on how the car is likely to be driven and its general use. To help you identify which type of service would be most suitable, please refer to the following guide.

The Time and Distance Service is recommended for vehicles that will cover less than 10,000 miles in 12 months and if the vehicle is likely to be used in the following way:

- Predominantly urban driving, short journeys with frequent cold starts.
- Activities regularly producing high engine loading, e.g. frequent hill climbs, driving with vehicle fully loaded and towing.
- Uneconomical driving style using high rpms with heavy acceleration and heavy braking.

The service intervals for the Time and Distance Service are as follows:

- Oil change service
Every 10,000 miles/1 year (whichever is soonest).
- Interval service
Every 20,000 miles/2 years (whichever is soonest).
- Inspection service
Every 40,000 miles/3 years (whichever is soonest).

The LongLife Service is recommended for vehicles with a daily mileage of more than 25 miles where the vehicle is driven regularly mainly on longer distance journeys. The vehicle is driven mainly at a constant speed with minimum vehicle and engine loading, minimal towing and driven in an economical manner.

With the LongLife Service the vehicle can cover anywhere between 10,000[†] and a maximum of 18,000[†] miles or 24 months (whichever is soonest) between oil changes. Inspection service is typically in the third year of ownership and thereafter every second year, for vehicles with an approximate annual mileage of 10,000 miles.

[†] Please note that mileages are approximate as the service indicator system uses kilometres as the distance measurement. Please consult your authorised Volkswagen retailer or repairer for advice and full details.

Extended Warranty.

You may purchase additional protection from your authorised Volkswagen retailer or repairer, or contact 0870 9000 115.

Volkswagen Finance[‡].

Volkswagen Finance specialises in providing funding solutions for Volkswagen drivers. Whether your Volkswagen is for private or business use, you can choose from a range of funding options.

- Solutions – a personal contract plan
- Hire purchase
- Lease purchase
- Finance lease
- Contract hire

With all Volkswagen Finance products you can choose a fixed-cost maintenance plan to help you budget for your servicing and maintenance costs.

No matter what finance product you choose, your local Volkswagen retailer will be able to provide you with a personalised quote that could meet your budget and vehicle needs.

[‡] Volkswagen Finance is a trading name of Volkswagen Financial Services (UK) Limited. An offer of finance depends on certain conditions. Available to people over 18 in the UK only.

Volkswagen Insurance[±].

Competitive and comprehensive motor insurance designed especially for Volkswagen drivers. All new and Approved Used Volkswagens come with complimentary seven-day cover upon request – we'll e-mail a cover note straight to your retailer, enabling them to tax your car easily. This way, you can drive straight out of the showroom. Taking out annual cover is easy and it can start when the seven-day cover expires. For more information contact your local Volkswagen retailer or call 0800 051 3136.

[±] Volkswagen Insurance is underwritten and administered by Zurich Insurance plc. Volkswagen Insurance is a trading name of Volkswagen Insurance Service (Great Britain) Limited which is an appointed representative of Volkswagen Financial Services (UK) Limited. Zurich Insurance plc and Volkswagen Financial Services (UK) Limited are both authorised and regulated by the Financial Services Authority.

Volkswagen Roadside Assistance.

Every new car is registered for Volkswagen Roadside Assistance for one year. This provides vehicle home and roadside recovery in the unlikely event of a breakdown in the UK and Europe (subject to conditions). Volkswagen Roadside Assistance can also be purchased for subsequent years. For full details, please contact your authorised Volkswagen retailer or repairer.

Tax Free Sales.

For full details, please contact your authorised Volkswagen retailer.

CO₂ Emission.

Increased weight of a vehicle, including higher trim levels and the addition of options will have a detrimental influence on the level of fuel consumption and CO₂ emissions produced.

The CO₂ and fuel consumption figures are obtained from tests on a representative vehicle of the type, conducted and approved in accordance with Council Directive 80/1268/EEC as amended by Directive 1999/100/EC (or later) on the approximation of the laws of the member states relating to the carbon dioxide emissions and the fuel consumption of motor vehicles.

Please Note:

Some illustrations in this brochure do not necessarily reflect UK specifications and may not be available. In particular, controls and some items of equipment are positioned differently for the UK.

The specifications contained in this brochure are for information purposes only and are subject to change. If you require any specific feature, you must consult your authorised Volkswagen retailer who is regularly updated with any change in specification. Please check model availability and full specification details with your authorised Volkswagen retailer prior to ordering.

Note: We would like to advise you that telephone calls to Volkswagen Customer Care may be monitored and recorded as part of our training and quality assurance processes. All our monitoring and recording processes meet Ofcom regulations.