

New Avensis



ENHANCED PERFORMANCE
LOWER CO₂
BETTER FUEL ECONOMY

Index

[Introducing Avensis](#)

[Toyota Optimal Drive](#)

[Engines and transmissions](#)

[T₂](#)

[TR](#)

[T₄](#)

[T Spirit](#)

[Wheels and trims](#)

[Colours](#)

[Option packs](#)

[Accessories](#)

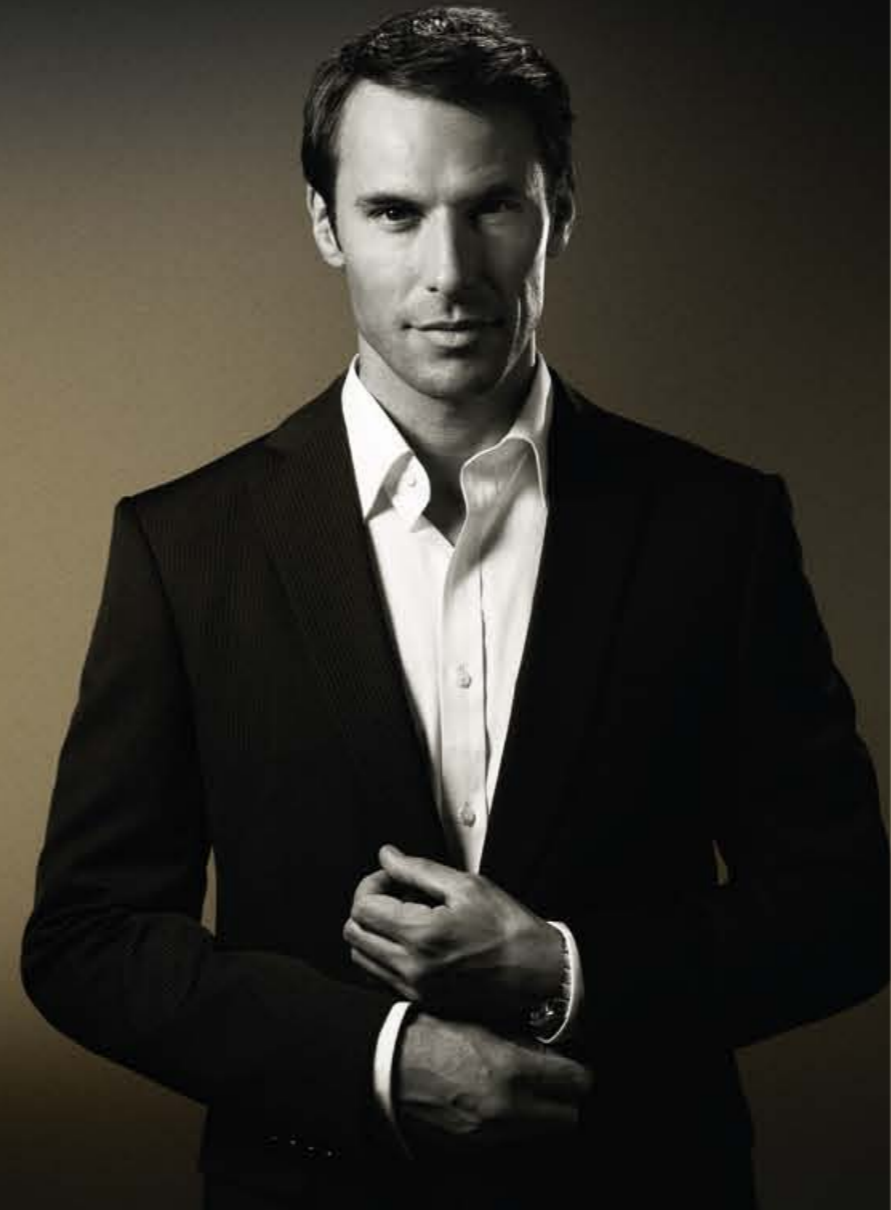
[Specifications](#)

[Equipment](#)

[Glossary](#)

[Environment](#)

[Owning an Avensis](#)



New Avensis is bold in character
and strong in intelligence.

It exudes a quiet confidence
that comes from an inherent
sense of quality.



Where does true confidence
come from?

It comes from years of
preparation, knowledge and
attention to detail.

Commitment that results in
an experience of assured and
exhilarating quality.



Athletic. Authentic. Assured.

New Avensis encompasses a harmony of smooth flowing lines, resulting in an impressive, powerful presence.





Where does strength of character come from?

Total confidence to trust your performance.

An inner resilience that sets you apart, to lead and inspire on the journey ahead.

Understanding how far you've come and exactly where you are going.





Luxurious comfort abounds.
Welcome to a deeply calming
environment.



The new Avensis is defined by meticulous attention to detail.



Many solutions, one Avensis.

The new Avensis is the sum of countless intelligent discussions and challenges. A car that truly understands its driver. Knowledge and experience have informed all the clever solutions that create a superior driving sensation.

- Athletic styling
- Toyota Optimal Drive Technology
- Outstanding driving dynamics

Toyota Optimal Drive

Toyota Optimal Drive means reduced CO₂ emissions, better fuel economy and enhanced performance. It marks the beginning of a new generation of power train technologies, engineered to save you money. It means you no longer have to give up performance to benefit from lower CO₂ and improved economy.

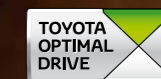
— CO₂ emissions start from as little as 134 g/km*

— Fuel consumption up to 55.4 mpg

— 2.2 D-CAT 6-speed automatic (150 DIN hp) from 44.1 mpg and 169 g/km

Toyota Optimal Drive advances are not limited to diesel. The all new 1.6 and 1.8 Valvematic petrol engines combine the latest variable valve timing with lightweight components to deliver an optimal balance of power, fuel economy and emissions.

* 2.0 D-4D diesel – TR saloon.



ENHANCED PERFORMANCE
LOWER CO₂
BETTER FUEL ECONOMY



5 engines and all the information you need to choose the right one.

Toyota Optimal Drive 1.6 litre Valvematic Petrol – 6 M/T	Toyota Optimal Drive 1.8 litre Valvematic Petrol – 6 M/T	Toyota Optimal Drive 1.8 litre Valvematic Petrol – Multidrive S	Toyota Optimal Drive 2.0 litre D-4D Diesel – 6 M/T	Toyota Optimal Drive 2.2 litre D-4D 150 Diesel – 6 M/T	Toyota Optimal Drive 2.2 litre D-CAT 150 Diesel – 6 A/T
Power 132 DIN hp	147 DIN hp	147 DIN hp	126 DIN hp	150 DIN hp	150 DIN hp
Fuel consumption* 43.5 mpg	43.5 mpg	42.2 mpg	55.4 mpg	51.4 mpg	44.1 mpg
CO₂ emissions 152 g/km	154 g/km	157 g/km	TR grade 134 g/km (135 g/km)	147 g/km	169 g/km
Acceleration 10.4 secs 0–62 mph	9.4 secs 0–62 mph	10.4 secs 0–62 mph	9.7 secs 0–62 mph	8.9 secs 0–62 mph	9.5 secs 0–62 mph
6-speed manual transmission. Available on: T ₂ – saloon, tourer TR – saloon, tourer	6-speed manual transmission. Available on: T ₂ – saloon, tourer TR – saloon, tourer T ₄ – saloon, tourer	7-step continuously variable transmission. Available on: T ₂ – saloon, tourer TR – saloon, tourer T ₄ – saloon, tourer	6-speed manual transmission. Available on: T ₂ – saloon, tourer TR – saloon, tourer T ₄ – saloon, tourer	6-speed manual transmission. Available on: TR – saloon, tourer T ₄ – saloon, tourer T Spirit – saloon, tourer	6-speed automatic transmission. Available on: TR – saloon, tourer T ₄ – saloon, tourer T Spirit – saloon, tourer
* Combined cycle. The above figures are based on saloon models					

T₂

An inherent sense of quality permeates the T₂. Reassuring interior comfort complements dynamic exterior styling.



Main features

- Radio/CD with 6 speakers (MP3 WMA compatible)
- Air conditioning (manual)
- Urethane steering wheel with audio switches
- Electric, heated external mirrors
- 60/40 split rear seat configuration
- Front console storage box with lid
- 2-way front headrests
- Dark grey fabric interior trim
- Black front centre console
- Emergency Brake Signal
- VSC+
- Roof rails (tourer)
- 16" steel wheels

Options

- 16" Levana alloy wheels (illustrated above)

TR

Welcome to the TR for a unique and fulfilling driving experience.



TR

The TR exudes a quiet, understated sense of quality. Premium features create enhanced levels of comfort.



Main features (additional to T₂)

- 17" alloy wheels
- Dual zone climate control
- Radio/CD with 6 speakers (MP3 WMA compatible) (with music streaming)
- Full map satellite navigation with Bluetooth®, wireless streaming capability, electronic traffic avoidance, USB, MP3 player & iPod® connection
- Rear-view reversing camera
- Cruise control*
- Leather steering wheel and gear knob
- 2-way power lumbar support
- Front and rear power windows
- Privacy glass (tourer)
- Front fog lamps
- Boot access via rear seat
- Front console storage box with lid
- 4-way front headrests
- Titanium-coloured centre console
- TR dark grey fabric interior trim
- Rear spoiler (saloon 2.0 D-4D only)
- Boot rails (tourer)

Options

Protection Pack

* Cruise control with speed limiter not available on 1.8 litre petrol Multidrive S and 1.6 manual.

T₄

Cutting-edge design and a genuine sense of confidence define the T₄.



Main features (additional to TR)

- Unique 17" alloy wheels
- Leather interior trim in Pentrich Black or Peveril Stone (dependent upon exterior colour)
- Premium full map satellite navigation
- Premium audio with 10GB music hard drive and 11 speakers
- Heated power front seats with two memory settings
- Electronic tilt and telescopic steering column with two memory settings
- Rear-view reversing camera
- Rain sensing wipers
- Dusk sensing headlights
- Smart Entry & Start System
- Electrochromatic rear-view mirror
- Electrically heated & retractable external mirrors
- Bamboo graphics centre console
- Back window sunshade (saloon)

Options

- Protection Pack, including rear parking sensors and boot liner (4-door)
 - Protection Pack, as above, plus cargo manager (tourer)
- NB: Saloon has no rear spoiler.

T Spirit

The T Spirit is dynamic and impressive. Providing genuine luxury, innovative features and cutting-edge safety.



Main features (additional to T₄)

- 18" alloy wheels
- Panoramic roof (tourer)
- Rear parking sensors
- HID Bi-Xenon headlights with AFS and headlamp cleaners

Options

- Safety Pack, including: Adaptive cruise control, Pre-Crash Safety system, Lane Keeping Assist and Lane Departure Warning (2.2 D-CAT 150 automatic only)

Wheels and trims

Wheels and trims to suit your Avensis, and your style.

18" wheels
225/45R18
Standard on T Spirit



16" steel wheels
205/60R16
Standard on T₂



17" alloy wheels
215/55R17
Standard on T₄



17" 5 multi-spoke alloy wheels
215/55R17
Standard on TR



01. T₂ Curbar Black cloth



02. TR Chesil Black cloth



03. T₄ and T Spirit Peveril Stone Leather
(standard with Dark Blue & Eclipse Black)



04. T₄ and T Spirit Pentrich Black Leather
(standard with Tyrol Silver, Aspen Grey, Tungsten Blue, Pure White & Decuma Grey, optional with Dark Blue & Eclipse Black upon request)



Colours

7 shades of Avensis.



1G6 Aspen Grey*

1F7 Tyrol Silver*

040 Pure White

8U5 Tungsten Blue*

1G3 Decuma Grey*

209 Eclipse Black*

8S6 Dark Blue*

* Metallic.

Option Packs

One Avensis, many solutions, easy choices. Accessories and packs are designed by Toyota especially for your Avensis. Each pack offers you a great value way to tailor your car to the life you lead.

For details of the full accessory range, contact your local Toyota Centre or visit www.toyota.co.uk/newavensisaccessories

Protection Pack – saloon & tourer:

01 Rear Toyota Parking Aid TPA400

Sensors in the rear bumper link to an in-cabin alarm that warns of obstacles when reversing.

02 Boot liner

Tough protection against mud, liquids and dirt.

In addition the tourer Protection Pack includes:

03 Cargo manager

A versatile aluminium design that clips neatly into the tourer's boot floor rails.

04 Alloy wheel option – T₂

5 double-spoke 16" alloy wheel.



Option Packs must be ordered when ordering your vehicle.

Accessories

With Toyota genuine accessories you have choices for extra style, practicality and technical innovation for your Avensis. Reassuringly, each accessory comes with the same Toyota commitment to quality as with the Avensis itself.

Audio and technology

Bluetooth® hands-free system – with SWC (w/audio streaming)
Bluetooth® complementary kit
Digital Audio Broadcast (digital radio upgrade)
HomeLink® – ivory, black or grey panel
iPod®/iPhone®/USB integration kit
Modular in-car entertainment
Toyota Parking Aid TPA400

Convenience

Bulb kit
Coat hanger (fixes to rear of front seat)
Cool box
Seat back storage bag, beige/black or blue/black
Sun blinds, back & passenger doors

Interior trim

Carpet mats, greige, anthracite, set 4
Rubber mats, beige, black, set 4
Shift knob (auto, man 5-gear & man 6-gear)
Textile mats, anthracite set 4

Protection

Boot liner, saloon
Boot liner, tourer with trunk rails
Boot mat, tailored, reversible fabric/rubber
Bumper corner protectors

Cargo manager (retains luggage in boot)

Cargo net, horizontal
Cargo net, vertical
Dog guard ½ height
Dog guard full height
Headlamp protection covers
Hood deflector
Mud flaps, front & rear pairs
Rear bumper clear protection film
Rear bumper protection plate – black
Side protection mouldings, black, textured

Roof

Roof rack, max. load: tourer 100kg, saloon 75kg inc. rack
The following can only be fitted with the roof rack:
Barracuda bicycle holder, holds one bicycle, two can be fitted
Canoe holder, holds one canoe
Small ski holder, 4 pairs of skis or 2 surfboards, lockable
Large ski holder, 6 pairs of skis or 4 surfboards, lockable
Luggage box, silver “Standard” 380L
Luggage box, black “Luxury” 380L
Luggage/ski box, black “Luxury” 390L
Luggage/ski box, silver “Standard” 410L
Sailboard/mast holder

Safety

Babysafe seat Plus G0+, birth to 13kg (approx. up to 15 months)
Child seat Duo Plus G1+, 9 to 18kg (approx. 8 months to 4 years)
Fire extinguisher
First aid kit
Reflective jacket
Warning triangle

Style

Exhaust pipe finisher (request petrol or diesel)
Fog lamp contour
Front chrome surround
Front grille
Front skirt*
Lowering springs
Rear chrome garnish, saloon
Rear lip spoiler*, saloon
Rear skirt* (for single or dual exhaust)
Roof spoiler* (fits rear door, tourer)
Side chrome garnish
Side skirt*

Towing

Detachable towbar, vertical – saloon and tourer
Detachable towbar, horizontal – saloon and tourer
Fixed tow bar – saloon and tourer
12V electrics

Wheels

Pitlane 18" alloy wheels

* Painted to match body colour.



home



previous



next



index



show menu



print



zoom in



zoom out



save



help





Adding to the appeal

Athletic. Authentic. Assured. Toyota body style accessories were designed especially for the Avensis. Front, side and rear skirts add to that look of high performance. A roof or rear spoiler accentuates the appeal of aerodynamic precision. Individually or as a whole, each accessory contributes an exciting extra touch of sports personality.

**01 Roof spoiler
Pitlane 18" alloy
wheels & side skirts**
Especially designed to complement the aerodynamics of the Avensis tourer.

02 Rear skirt
Introduces an extra dimension to your car's rear styling.

**03 Front skirt &
grille contour**
The combination of these style accessories creates a powerful impression.

04 Rear spoiler
Emphasises the aerodynamic look of the Avensis saloon.

05 Exhaust pipe finisher
Chrome finish detail to enhance the sports appearance.



Style and practicality

Toyota accessories are designed to complement the vehicle. For the Avensis they range from beautifully crafted details like the side chrome garnish* and fog lamp contours through to more practical side mouldings* and corner protectors. To guard against bumps and scrapes, depending on which Avensis model you drive, you can protect your car with colour co-ordinated front, or front and rear, parking sensors that link to an in-cabin alarm. Plus there's the lockable roof rack, which can be fitted with a range of holders to carry skis, a luggage box and bicycles.

01 Barracuda bicycle holder
For safe transportation with a unique anti-theft system.

02 Rear bumper protection film
Transparent film to guard against minor scratches.

03 Fog lamp contour
Chrome finish bezels to accentuate your fog lamps.

04 Rear chrome garnish
Adds a stylish visual detail.

05 Bumper corner protectors
Front and rear protection against scrapes.

06 Parking aid sensors
Front sensors to complement your pre-fitted rear sensor system.

07 Mud flaps
For the front and rear wheel arches.

* Not illustrated.

Toyota parking aid system has rear, or front and rear, sensors. These activate when reversing and link to an in-cabin alarm that grows louder the closer you get to an obstacle. Parking assist, with its rear-view camera, can be used independently or in combination with the sensor system. The camera images are presented either in a special rear-view mirror or through the screen on the optional TNS510 navigation system.



01



02



03



04



06



05



07



Audio and technology

The technology in Toyota accessories is custom designed to have meaning and relevance to the way you choose to live. Importantly, the quiet calm of the Avensis' interior is the perfect environment for enjoying every function and feature.



01 Modular in-car entertainment system

Film and graphic imagery reproduce superbly on the system's high definition 7" screen.

02 Headphones

The entertainment system's infra-red headphones automatically switch off to preserve battery life when removed from the head.

03 Remote control

Enables passengers to operate the entertainment system without adjusting or unfastening their seatbelts.

04 Bluetooth® complementary kit & hands-free phone system

05 USB, iPod®, iPhone® integration box



Modular in-car entertainment system

Journeys will fly by for rear seat passengers as they watch a DVD or play a connected games console on the modular in-car entertainment system.

Features include an all-in-one DVD player with CD and MP3 compatibility, a 7" screen, infra-red headphones, a remote control and a USB slot for accessing media straight from a memory stick.

Conveniently, you can move the unit between seats and cars and also adjust the screen height for adult or child viewing.



Bluetooth® complementary kit

The Bluetooth® complementary kit adds an extra touch of convenience if your Avensis is already enabled for Bluetooth® communications.

The kit has a discreet external antenna to enhance reception and features a cable-less cradle that secures your phone* while also charging its battery. Importantly, the cradle can be used in other cars fitted with the same system.

Bluetooth® hands-free phone system (T₂ only)

The Bluetooth® hands-free phone system is the ideal accessory if your Avensis is not enabled for Bluetooth® communications as standard.

Steering wheel controls and comprehensive voice recognition commands including voice dialling make the system very easy to use. It also enables you to play music stored on your phone through the car's speakers.

USB, iPod®, iPhone® integration box

Convenient centre console installation with connection sockets for integrating your personal technology with the Avensis' audio system.

* Contact your Toyota Centre for details of phone compatibility.

Specifications

ENVIRONMENTAL PERFORMANCE		1.6 Valvematic 1ZR-FAE 6 M/T	1.8 Valvematic 2ZR-FAE 6 M/T	M/D S	2.0 D-4D 1AD-FTV 6 M/T	2.2 D-4D 150 2AD-FHV 6 M/T	2.2 D-CAT 150 2AD-FHV 6 A/T			
Fuel consumption (EU Directive 80/1268 as last modified by Directive 2004/3)		T ₂ /TR	T ₂	TR	T ₂ /T ₄	TR	TR/T ₄	T Spirit	TR/T ₄	T Spirit
Combined driving (mpg)	saloon	43.5	43.5	42.2	55.4	55.4	51.4	51.4	44.1	43.5
	tourer	43.5	42.8	42.2	54.3	54.3	50.4	50.4	42.8	42.2
Urban driving (mpg)	saloon	34.0	33.2	32.8	42.8	43.5	40.4	40.4	34.4	34.4
	tourer	33.6	32.8	32.8	42.8	42.8	39.8	39.8	33.6	33.2
Extra urban driving (mpg)	saloon	52.3	52.3	50.4	65.7	67.3	60.1	60.1	53.3	52.3
	tourer	52.3	51.4	50.4	65.7	65.7	58.9	58.9	51.4	50.4
Recommended fuel grade		95 unleaded petrol or higher		48 cetane diesel or higher		48 cetane diesel or higher		48 cetane diesel or higher		
Fuel tank capacity (litres)		60		60		60		60		
Carbon dioxide, CO ₂ (EU Directive 80/1268 as last modified by Directive 2004/3)										
Combined driving (g/km)	saloon	152	154	157	135	134	147	149	169	169
	tourer	153	155	158	136	136	150	152	174	174
Urban driving (g/km)	saloon	196	199	201	173	173	185	187	216	216
	tourer	197	202	202	174	174	189	190	223	223
Extra urban driving (g/km)	saloon	127	127	131	113	111	124	126	141	141
	tourer	134	128	133	115	115	128	130	145	145
Exhaust emissions (EU Directive 70/220/EEC as last modified by Directive 2003/76B)										
Euro class		Euro 4		Euro 4		Euro 4		Euro 5		Euro 5
Carbon monoxide, CO (g/km)		0.21		0.24		0.23		0.161		0.049
Hydrocarbons, HC (g/km)		0.03		0.04		–		–		–
Nitrogen Oxides, NO _x (g/km)		0.01		0.01		0.14		0.162		0.081
Hydrocarbons, HC & Nitrogen Oxides, NO _x (g/km)		–		–		0.16		0.171		0.09
Particulates, PM (g/km)		–		–		0.014		0.001		0.0003
Noise (drive-by) (EU Directive 70/157/EEC as last modified by Directive 2007/34)										
dB(A)		73		73		72		73		71

The fuel consumption and CO₂ values of your vehicle may vary from those measured. Driving behaviour as well as other factors (such as road conditions, traffic, vehicle conditions, installed equipment, load and number of passengers, etc.) play a role in determining a car's fuel consumption and CO₂ emissions.

ENGINE	1.6 Valvematic 6 M/T	1.8 Valvematic 6 M/T	M/D S	2.0 D-4D 6 M/T	2.2 D-4D 150 6 M/T	2.2 D-CAT 150 6 A/T
Available with	T ₂ , TR	T ₂ , TR		T ₂ , TR, T ₄	TR, T ₄ , T Spirit	TR, T ₄ , T Spirit
Number of cylinders	4 in line	4 in line		4 in line	4 in line	4 in line
Fuel type	Petrol	Petrol		Diesel	Diesel	Diesel
Valve mechanism	4 valve roller rocker	4 valve roller rocker		DOHC 16 valve	DOHC 16 valve	DOHC 16 valve
Fuel system	Electronic fuel injection	Electronic fuel injection		Direct injection	Direct injection	Direct injection
Displacement (cc)	1598	1798		1998	2231	2231
Bore x stroke (mm x mm)	80.5 x 78.5	80.5 x 88.3		80.5 x 97.6	86.0 x 96.0	86.0 x 96.0
Compression ratio	10.7:1	10.5:1		15.8:1	15.7:1	15.7:1
Maximum power output (kW/rpm)	132/6400	147 DIN hp (108/6400)		126 DIN hp (93/3600)	150 DIN hp (110/3600)	150 DIN hp (110/3600)
Maximum torque (Nm/rpm)	160/4400	180/4000		310/1800–2400	340/1800–2400	340/2000–2800

PERFORMANCE		1.6 Valvematic 6 M/T	1.8 Valvematic 6 M/T	M/D S	2.0 D-4D 6 M/T	2.2 D-4D 150 6 M/T	2.2 D-CAT 150 6 A/T
Max. speed (mph)	saloon	124	124	124	124	130	127
	tourer	121	124	124	124	130	127
0–62 mph	saloon	10.4	9.4	10.4	9.7	8.9	9.5
	tourer	10.6	9.7	10.7	10.0	9.2	9.8
Drag coefficient	saloon	0.28	0.28	0.28	0.28	0.28	0.28
	tourer	0.29	0.29	0.29	0.29	0.29	0.29

BRAKES

Front	Ventilated disc (295 x 26 mm/2.2 D 320 x 26 mm)
Rear	Solid disc (290 x 11 mm)

M/T = Manual transmission A/T = Automatic transmission M/D S = Multidrive S

Specifications

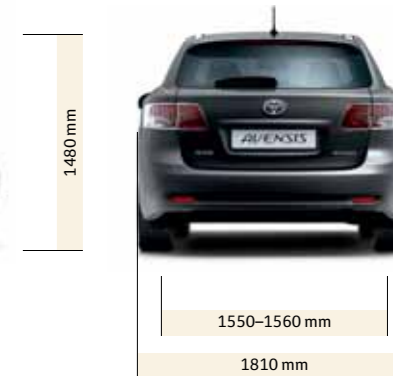
SUSPENSION

Front	MacPherson strut system
Rear	Double wishbone

DIMENSIONS

Exterior dimensions

		Length	Width	Height	Wheelbase
Overall (mm)	saloon	4695	1810	1480	2700
	tourer	4765	1810	1480	2700
		Saloon	Tourer		
Front tread (mm)		1550 (17", 18")–1560 (16")	1550 (17", 18")–1560 (16")		
Rear tread (mm)		1540 (17", 18")–1550 (16")	1540 (17", 18")–1550 (16")		
Front overhang (mm)		965	965		
Rear overhang (mm)		1030	1100		
Turning radius (m)		5.4	5.4		



DIMENSIONS

		Length	Width	Height
Interior dimensions Overall (mm)	saloon	1959	1508	1180
	tourer	1959	1508	1180
Luggage compartment Overall (mm)	saloon	960	1470	530
	tourer	1105	1550	765
VDA luggage capacity, rear seat up (litres)	saloon			509
	tourer			543
VDA luggage capacity, rear seat down (litres)	saloon			–
	tourer			1609

Specifications

WEIGHTS		1.6 Valvematic 1ZR-FAE 6 M/T	1.8 Valvematic 2ZR-FAE 6 M/T	M/D S	2.0 D-4D 1AD-FTV 6 M/T	2.2 D-4D 150 2AD-FHV 6 M/T	2.2 D-CAT 150 2AD-FHV 6 A/T	
Kerb weight (kg)	saloon	1365/ 1435	1370/ 1455	1405/ 1475	1490/ 1580	1515/ 1600	1530	1535/ 1615*
	tourer	1400/ 1445	1405/ 1510	1430/ 1485	1520/ 1635	1545/ 1635	1560/ 1650	1570/ 1650*
Gross vehicle weight (kg)	saloon	1950	2000	2020	2100	2140	2140	
	tourer	1950	2000	2020	2100	2140	2140	
Payload (kg)	saloon	585/ 515	630/ 545 (615/ 545)*	615/ 545	610/ 520	625/ 565	610/ 530	605/ 525*
	tourer	550/ 505	595/ 490	595/ 490	580/ 495	595/ 505	580/ 490	570/ 490*
Towing capacity (kg)	w/brakes	1400	1500	1600	1600	1800	1600	
	w/o brakes	500	500	500	500	500	500	

TYRES AND WHEELS	T ₂	TR	T ₄	T Spirit
205/60R16	●	–	–	–
215/55R17	–	●	●	–
225/45R18	–	–	–	●
Temporary spare wheel/tyre	●	●	●	●
Tyre repair kit	–	–	–	● (tourer with panoramic roof)

Equipment

EXTERIOR	T ₂	TR	T ₄	T Spirit
Bumpers	●	●	●	●
Grille: colour-keyed with chrome surround	●	●	●	●
Door mirrors with integrated turning signal: colour-keyed, electric/heated	●	●	–	–
Door mirrors with integrated turning signal: colour-keyed, electric, heated and retractable	–	–	●	●
Silver roof rails on tourer	●	●	●	●
Automatic dusk sensing headlights	–	–	●	●
HID Bi-Xenon + AFS + headlamp cleaners	–	–	–	●
Front fog lamps	–	●	●	●
Rear fog lamp	●	●	●	●
Green tempered glass	●	●	●	●
Chrome window frame decoration	●	●	●	●
Rear privacy glass on tourer	–	●	●	●
Back window sunshade on saloon	–	–	●	●
Front wipers with rain sensor	–	–	●	●
Rear window wiper with interval on tourer	●	●	●	●

COMFORT	T ₂	TR	T ₄	T Spirit
Manual air conditioning	●	–	–	–
Adaptive Cruise Control (ACC) [§]	–	–	–	○
Dual zone automatic air conditioning (with digital controls)	–	●	●	●
Clean air filter	●	●	●	●
3-spoke urethane steering wheel & shift knob	●	–	–	–
3-spoke leather steering wheel & shift knob	–	●	●	●
Tilt & telescopic steering wheel	●	●	●	●
Power adjustable steering wheel with 2 memory settings	–	–	●	●
Cruise control with speed limiter [¶]	–	●	●	●

● = Standard ○ = Optional – = Not available M/T = Manual transmission A/T = Automatic transmission M/D S = Multidrive S
 * T Spirit. § Only on 2.2 D-CAT 6 A/T with Safety Pack. ¶ Cruise control is not available on 1.8 litre petrol Multidrive S and 1.6 litre petrol.

Equipment

COMFORT	T ₂	TR	T ₄	T Spirit
Paddle shift for 2.2 D-CAT 150 6 A/T	–	●	●	●
Rear parking sensors	–	–	–	●
Inside door handles: chrome-plated	●	●	●	●
Rear-view mirror: day & night	●	●	–	–
Rear-view mirror: day & night, electrochromatic	–	–	●	●
Sun visors with mirror and lamp: D & P	●	●	●	●
Rear armrest with integrated cup holders	●	●	●	●
Auto up/down front power windows with jam protection	●	●	●	●
Auto up/down rear power windows with jam protection	–	●	●	●
Panoramic roof on tourer	–	–	○	●
Fuel lid opener: electric	●	●	●	●
Boot opener: electric	●	●	●	●
Door courtesy lamp (front 2)	●	●	●	●
Front & rear personal lamps (2)	●	●	●	●
Luggage room lamp	●	●	●	●
Rear window defogger with timer	●	●	●	●
Electric Parking Brake (EPS)	●	●	●	●

INFORMATION	T ₂	TR	T ₄	T Spirit
Multi-information display: average speed, average and instant fuel consumption, driving range*	●	●	●	●
Gear Shift Indicator (6 M/T)	●	●	●	●
ECO-driving indicator (Multidrive S)	–	●	●	–
Optitron meter illumination system	●	●	●	●
Meter illumination control	●	●	●	●
Clock	●	●	●	●
External temperature	●	●	●	●
Trip meter (twin)	●	●	●	●

AUDIO AND NAVIGATION	T ₂	TR	T ₄	T Spirit
Navigation	–	●	–	–
Premium navigation with high spec. audio, music hard drive	–	–	●	●
Rear-view reversing camera	–	●	●	●
Audio with CD player & 6 speakers	●	–	–	–
Audio with CD player & 6 speakers & Bluetooth®	–	●	–	–
Premium audio with CD changer, Bluetooth® & 11 speakers	–	–	●	◊
Roof mounted antenna (tourer)	●	●	●	●
Glass integrated antenna	●	●	●	●

SEATS	T ₂	TR	T ₄	T Spirit
Front seat adjuster manual: D 6-way, P 4-way	●	●	–	–
Power front seat with 2 memory settings: D & P 8-way	–	–	●	●
Seat lumbar support: D power	–	●	●	●
D/P seat: height adjustable	●/–	●/–	●/●	●/●
Front headrests: vertical adjustment	●	–	–	–
Front headrests: vertical and tilt adjustment	–	●	●	●
One-motion fold flat rear seats (60:40)	●	●	●	●
Rear seat headrests (3)	●	●	●	●
Seat trim: Curbar black cloth	●	–	–	–
Seat trim: Chesil black cloth	–	●	–	–
Seat trim: Pentrich black leather [§]	–	–	● [§]	● [§]
Seat trim: Pevenil Stone leather [§]	–	–	● [§]	● [§]
Seat heater: driver and passenger	–	–	●	●

● = Standard ○ = Optional – = Not available D = Driver P = Passenger

* Multi-information display integrated into 6.5" colour screen if full map navigation is selected.

[§] Dependent on vehicle's exterior colour.

◊ CD changer not available when navigation is selected.

Equipment

STORAGE COMPARTMENTS	T ₂	TR	T ₄	T Spirit
Glovebox with key & damper	●	●	●	●
In-dash storage box with push-open door at top instrument panel	●	●	●	●
Front console box with lid, cupholder, ashtray & chrome detail	●	●	●	●
Push-open cup holder in instrument panel	●	●	●	●
Cup holders (x2) in rear armrest	—	●	●	●
Front & rear door pockets	●	●	●	●
Seatback pockets: driver and passenger	●	●	●	●
Underfloor storage (x2) in the boot (tourer)	●	●	●	●
Luggage hooks (x4)	●	●	●	●
Trunk rails + hooks on tourer	—	●	●	●
Tonneau cover on tourer	●	●	●	●

SAFETY	T ₂	TR	T ₄	T Spirit
Active				
4 disc brakes (ventilated in the front/solid in the rear)	●	●	●	●
ABS & EBD	●	●	●	●
VSC+, TRC & BA	●	●	●	●
Passive				
Automatic door locking	●	●	●	●
LED-rear lamps with Emergency Brake Signal	●	●	●	●
Crash resistant body structure	●	●	●	●
Body shell with high tensile steel elements	●	●	●	●
Energy absorbing bumpers	●	●	●	●
Side impact bars	●	●	●	●
Reinforced centre pillar	●	●	●	●

SAFETY	T ₂	TR	T ₄	T Spirit
Head impact protection	●	●	●	●
Reinforced rear seatback against luggage intrusion	●	●	●	●
SRS dual-stage front airbags: D & P	●	●	●	●
SRS side airbags: D & P	●	●	●	●
SRS knee airbag: D	●	●	●	●
SRS curtain shield airbags: front & rear	●	●	●	●
Seat belt warning (all front and rear seats)	●	●	●	●
Front seat belts: 3-point ELR with pre-tensioners & force-limiters	●	●	●	●
Rear seat belts: 3-point ELR	●	●	●	●
Active front headrests D & P	●	●	●	●
Lane Keeping Assist (LKA) + Lane Departure Warning (LDW)*	—	—	—	○
Pre-Crash Safety system (PCS)*	—	—	—	○
Child protection lock	●	●	●	●
ISOFIX CRS fixation points (rear x2) with 2 top-tether anchor brackets	●	●	●	●
Collapsible pedal support strut	●	●	●	●
Collapsible steering column	●	●	●	●
Fire resistant upholstery	●	●	●	●
Electronic fuel cut system	●	●	●	●

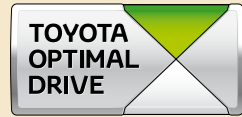
SECURITY	T ₂	TR	T ₄	T Spirit
Immobiliser & alarm system	●	●	●	●
Power door lock with answer back	●	●	●	●
Smart Entry & Start System	—	—	●	●
Fuel cap lock	●	●	●	●
Interior switch for door locking	●	●	●	●
Vehicle automatically re-locks if unlocked accidentally	●	●	●	●

● = Standard ○ = Optional — = Not available D = Driver P = Passenger

* Only on 2.2 D-CAT 6 A/T with Safety Pack.

Glossary

Discover more about Avensis technology.



Toyota Optimal Drive
Enhanced performance
Lower CO₂
Better fuel economy

Until now, drivers have had to choose between environmental efficiency and superior performance. Toyota Optimal Drive marks the beginning of a new era engineered to save you money. Lower emissions

and better fuel economy can now be enjoyed alongside levels of power and torque that match and often exceed existing engines.



Multidrive S

Multidrive S, the latest CVT technology from Toyota, gives a smooth, refined shift action, automatically optimising torque and fuel consumption by always using the ideal engine speed. When pressed a little harder, the transmission operates like a 7-speed automatic, which helps eliminate the characteristic whining associated with CTTs.

The Sport mode gives a sportier drive, selecting a more responsive and power-maximising ratio in line with driver input. For an even more involving drive, the system has a 7-speed sequential manual mode, letting the driver change gear using the shift lever.



Euro NCAP

Toyota are proud to announce the results of their score in the new NCAP safety rating scheme which came into force in February 2009. The scheme involves crash testing vehicles and covers Adult and Child Occupant Protection, Pedestrian Protection and Safety Assist.

A five-star rating is a fitting reflection of Toyota's dedication to the safety and protection of drivers, passengers and pedestrians alike.



D-4D

Clean power. Toyota's powerful yet environmentally friendly diesel engine technology. Common rail direct injection adjusts pressure, timing and volume as you drive, injecting finely atomised fuel at high pressure into the combustion chamber for the best performance.



6-speed diesel automatic transmission

The brand-new 6-speed automatic transmission provides a fast shift response while maintaining an impressive level of comfort by eliminating harsh shift shocks. It has a Sport mode that intelligently "reads" the driver's behaviour and accordingly adjusts its gear change pattern. This new automatic transmission also offers the exhilaration of a sequential manual mode.

By moving into the M-gate, the driver can change gear either by using the sequential shift of the gearshift lever or by using paddle-shifts on the steering wheel.



Valvematic

Precise petrol engine technology that balances optimised driving pleasure with improved fuel efficiency, power/torque, engine response and a reduced CO₂ emission level by simultaneously controlling the valve timing and the valve lift.



Vehicle Stability Control+ (VSC+)

A driving dynamics system which increases the protection normally given by VSC during sudden handling changes or slippage of tyres. It adds steering torque assist that counteracts yaw movement when the vehicle understeers

or oversteers in reaction to an emergency. The driver may sense some torque movement on the steering wheel in a given direction to compensate and can further enhance the adjustment made by the VSC itself.

**Emergency Brake Signal**

In the case of emergency braking, the rear lights flicker to alert the driver behind to react faster.

**Bi-Xenon HID headlamps with Adaptive Front-light System**

A clearer night drive. As the Avensis approaches a corner or bend in the road, the pool of light created by the swivel of the headlamp beam is increased, pre-empting the vehicle's path by three seconds. Visibility is enhanced in the dark.

**Active Front Headrests**

In the event of impact, the pre-crash intelligent headrests shift to appropriate positions to reduce whiplash injuries in the event of a rear end collision.

**Smart Entry & Start System**

Instead of a conventional key the Smart Entry & Start System features a transmitter that allows you to unlock the doors by simply touching the handle or start the engine at the touch of a button. All you need to do is carry the Smart Entry key in your pocket or handbag.

**Panoramic roof**

The windscreen extends from the front of the vehicle back across the roof over the driver's head, creating an expanse of light and visibility and a more liberating drive.

**Rear Parking Sensors**

An ultrasonic sensor that makes parking easier. The sensor alerts the driver of the distance to obstacles behind the car using an audible alarm. Especially useful for low, out of vision obstacles and street furniture.

**Dusk sensing headlights**

The dusk sensing headlights detect light levels and automatically switch on the headlights when the light is low.

**Electrochromatic mirrors**

A specially designed rear-view mirror that detects any intense glare from cars behind you, automatically darkening the mirror surface accordingly.

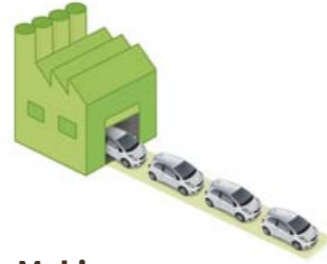
Toyota and the environment



Designing your car

To achieve lower emissions and greener vehicles on the way toward the ultimate eco-car, it is essential to measure progress. Toyota has therefore developed its Ecological Vehicle Assessment System, or ECO-VAS. This is a comprehensive approach to assessing a vehicle's whole life cycle in terms of its impact on the environment, starting at the early stage of development, before the vehicle is actually built.

The environmental impact of the Avensis diesel (displacement 2000cc) compared to its previous model is demonstrated through the complete life cycle analysis, with 9% CO₂ (carbon dioxide), 2% NO_x (nitrogen oxide), 9% NMHC (non-methane hydrocarbons) and 1% PM (particulate matter) reduction. The amount of SO_x (sulphur oxide) remained unchanged.



Making your car

During the production of your vehicle every effort is made to reduce the effect of the manufacturing process on the environment.

Since 1993 the environmental impact of manufacturing a single vehicle at Toyota Motor Manufacturing UK has continuously reduced, resulting in a 76% reduction in energy consumption, 80% reduction in water consumption and 74% reduction in volatile organic compounds. Waste disposed of at cost was also reduced by 68% and the plant no longer sends any waste to landfill sites.

In addition TMUK's manufacturing operations meet the environmental management system ISO 14001, a green standard we are proud of.



Getting vehicles and parts to you

We are always looking to employ the most efficient and environmentally friendly logistical and delivery methods. For instance, modes of transport with the least environmental impact are selected wherever possible.



Selling and servicing your car

We take great pride in demonstrating the benefits of driving eco-cars to each of our new customers. Every opportunity is then taken to raise awareness of their ongoing responsibility towards the environment when servicing and driving their car.



The end of the road for your vehicle?

95% of the Avensis is recoverable and the cars built in the UK use up to 17kg of recycled material (plastics and soundproofing material). 100% of materials are coded and the four heavy metals have been eliminated completely (in accordance with 2000/53/EC).

Our environmental policy means that we offer Toyota drivers new and innovative ways of returning their old car. For more information visit: www.toyota.co.uk or contact your local Toyota Centre.



Drive thoughtfully

Drive your car in the right way and you could reduce your fuel bill and your CO₂ emissions by around 30%.

01. Remove any extra weight and roof load.
02. Plan your route and avoid detours.
03. Avoid using your car for short journeys.
04. Check your tyre pressure regularly.
05. Service your car according to the owner's manual.
06. Shift up gear earlier.
07. Only use air conditioning when necessary.
08. Follow and anticipate traffic flow.
09. Keep your windows closed.
10. Switch off your engine if you have to wait longer than 60 seconds.

Owning an Avensis

On the day you purchase your Avensis, your Toyota Centre will present you with the 'Avensis Passport'. It's a guide to getting the best out of your Avensis and its comprehensive range of features. Of course, your Toyota Centre will explain the Avensis to you in detail – and always be available should you require any assistance.

Intelligent design

The Avensis is designed and engineered to minimise the maintenance overhead. There are fewer parts that require servicing and those that do are inherently durable to extend service intervals. Equally important is that Avensis technology is made easily accessible so that maintenance labour time can be minimised. These features combine with the highly competitive pricing of Toyota parts to ensure the lowest cost of maintaining your Avensis in an ideal working condition.

Toyota quality service

Your Toyota Centre will talk you through the Avensis 'Health and Safety' maintenance programme. The programme is very straightforward and designed for your convenience. In effect, your Avensis needs a full Health and Safety check, dependent on driving style and conditions, up to once every two years or 20,000 miles (whichever comes sooner). An intermediate Health and Safety check is necessary every year or 10,000 miles (whichever comes sooner).

Toyota warranty

Comprehensive terms The warranty covers any defect caused by a manufacturing or assembly fault. It is valid for three years of normal use or 60,000 miles, whichever comes first, with no mileage limitation for the first year. If the car is immobilised due to a breakdown (as a result of a defect covered under warranty), you will also be covered for the cost of towing your vehicle to the nearest authorised Toyota repairer.

Rust and paint defects

The warranty also covers surface rust and paint defects appearing on any of the painted body panels as a result of a fault in materials for a period of three years, regardless of mileage.

Corrosion cover

The warranty offers 12 years' coverage, regardless of mileage, against perforation of the bodywork (from inside to outside) that develops due to corrosion caused by faults in materials or workmanship.

Toyota genuine parts

The Avensis is designed to minimise the cost of accident repair. Energy-absorbing elements are built into the bumpers, expensive-to-replace parts are located away from damage zones, and commonly damaged body parts are bolted rather than welded. As a result, the extent of damage is limited and damaged parts are easy to remove, replace or repair. Ultimately, this means very low part and labour charges.

Club Toyota

When you buy a Toyota you automatically become a member of Club Toyota, for 12 months free of charge. This entitles you to take advantage of a host of benefits including free Roadside Assistance in the UK and Europe, specially negotiated rates for travel insurance, a 5% discount off Toyota Motor Insurance, plus exclusive offers and promotions through our quarterly customer magazine. For further information please call 0845 275 5555 or visit toyota.co.uk/club



Flexible Finance from Toyota Financial Services

When choosing your new car you will make sure you choose the right model, the right specification and the right colour to suit you. Choosing how you finance your car is just as important.

Our range of finance plans has been designed with simplicity in mind to make funding your car as easy as driving it. All our plans offer easy budgeting and peace of mind and **AccessToyota** brings these and other benefits together in one flexible package.

AccessToyota is a finance plan that puts you in control. You don't have to worry about finding a large deposit as you agree the amount of deposit that you want to pay and choose your repayment term from 2 to 3 years.

What makes **AccessToyota** different is that Toyota Financial Services (TFS) give your vehicle the security of a guaranteed future value (GFV) which is your optional final payment, deferred to the end of the agreement. Affordable monthly payments are yours to enjoy as your repayments are based on the vehicle selling price less your deposit and the GFV/optional final payment, plus the cost of borrowing.

In addition, you can have reassurance against the risk of a fall in used car prices, knowing the minimum amount your Toyota will be worth at the end of your agreement is guaranteed at TFS.

Then when your agreement comes to an end you have three flexible choices:

- Part exchange your vehicle for a brand new Toyota
- Pay your final payment (the GFV) and take full ownership of the car*
- Simply hand the car back with nothing more to pay[§]

Ask your Toyota Centre to show you how **AccessToyota** could be the best choice for you.

Flexible Finance for all Toyota customers

Whatever your needs, to complement Access Toyota, TFS has a full range of finance options to offer. From traditional Hire Purchase to Contract Hire and Leasing. Whether you're a private motorist with a fixed monthly budget in mind or a business customer looking for VAT-efficient funding options, just discuss your individual requirements with your Toyota Centre. They will be pleased to show you how convenient and competitive Toyota Financial Services can be.

Toyota Motor Insurance

Toyota Motor Insurance is available for Toyota owners at competitive premiums. To obtain details of the benefits included and to arrange a quotation, please contact your local Toyota Centre or call 0800 350 500.

Toyota Fleet

Toyota Fleet provides complete business solutions for companies that run a fleet of vehicles. For more information on how Toyota Fleet can deliver your fleet requirements either contact your local Toyota Centre or the Toyota Fleet Business Centre on 0845 271 2712.

Toyota Warranties

Every new Toyota comes with a three-year/60,000-mile manufacturer's warranty, covering your car against the unlikely event of a manufacturing defect causing a mechanical fault. It includes coverage for paint and surface rust for three years, unlimited mileage and a 12-year anti-perforation warranty. After the initial warranty period has ended, you can extend your warranty until the vehicle is seven years old – choosing from a range of packages to suit your vehicle and your needs. All of our warranties cover the main component parts of the vehicle[°], meaning that you pay for nothing beyond routine servicing and maintenance, so there are no unexpected bills to pay.

Toyota Accident Assistance

At Toyota, we believe that our customers deserve the best possible care. Therefore if you are involved in an accident, one call to Toyota Accident Assistance will get you back on the road again, whilst we take care of liaising with your insurer and arranging for your car to be repaired. By making us your first call, we will ensure your vehicle is repaired by Toyota to factory standards, meaning no compromise to your warranty or residual value.

Toyota Approved Used Car Scheme

All Toyota Approved Used vehicles come complete with a pre-delivery inspection, a mileage check, 12 months' warranty, breakdown cover, Club Toyota membership** and a 30-day vehicle exchange plan.

Recycling Toyota End-Of-Life Vehicles

We offer a free vehicle take back scheme through our appointed service provider, Autogreen. This is a new and innovative way for Toyota drivers to return their vehicle at the end of its life for dismantling and recycling. For more information about End-Of-Life Vehicles please refer to www.toyota.co.uk/environment

- * On payment of the option-to-purchase fee.
- [§] Subject to mileage and fair wear and tear conditions being met. TFS is authorised and regulated by the Financial Services Authority.
- [°] With the exception of batteries, corrosion of exhaust and damage or wear to the interior. Please refer to our Terms and Conditions for full details.
- ** Except on non-Toyota vehicles.

Toyota Financial Services, Great Burgh, Burgh Heath, Epsom, Surrey, KT18 5UZ.
Finance subject to status to over 18s only. Indemnities may be required. Terms and conditions apply.

To experience the new *Avensis* or for more information, please contact your local Toyota Centre or visit our website www.toyota.co.uk

Whilst every effort is made to reproduce accurate information, we reserve the right to change specifications, equipment and availability without prior notice. This ebrochure cannot be regarded as infallible (some of the vehicles shown may not be to exact UK specification), and as such does not constitute an offer for sale of any particular vehicle or specification. Fuel consumption values quoted throughout this brochure are determined according to EC Directive 1999/100/EC. The results do not express or imply any guarantee of actual fuel consumption. For the latest specification and availability we ask that you contact your local Toyota Centre.

GBNGV-310AS-VB March 2010

help

Using the navigation bar

A navigation bar is provided at the bottom of each page of this e-brochure to make browsing it easy. Please follow the simple instructions on the right to navigate through this e-brochure.



Takes the document back to the beginning.



This will take the document to the previous page.



This will take the document to the next page.



This will allow the Acrobat toolbar to be visible if pressed once and it will also make it disappear if already visible.



This will zoom in on the document so smaller text etc will be easier to read. To zoom in further, click the icon again. If the menu bar is not visible then use your mouse by clicking the left hand button and moving it.



This will zoom out of the document. To zoom out further, click the icon again. If the menu bar is not visible then use your mouse by clicking the left hand button and moving it.



This will print out the full brochure to your printer. Please note that if you have a colour printer this document will print in full colour.



This will save the whole document to your computer.

To close this document press esc and then close the document normally.

Whilst every effort is made to reproduce accurate information, we reserve the right to change specifications, equipment and availability without prior notice. This e-brochure can not be regarded as infallible, (some of the vehicles shown may not be to exact UK specification), and as such does not constitute an offer for sale of any particular vehicle of specification. For the latest specification and availability we ask that you contact your local Toyota Centre.



home



previous



next



index



show menu



print



zoom in



zoom out



save



help