

The new Golf R



The new Golf R. The badge says it all.

Unprecedented performance, unparalleled design, unbelievable fun, the new Golf R offers you the ultimate driving experience. No corner too exciting, no trip too daunting and no task too intimidating. Are you ready for the challenge?



350* Nm of torque. That's what you call breathtaking.

* Please see the Engine section for further information.



Model shown is new Golf R with optional 19" 'Talladega' alloy wheels including black headlight surrounds and metallic paint.



**0-62 in 5.7* seconds.
Blink and you'll miss it.**

* Please see the Engine section for further information.

Model shown is new Golf R with optional 19" 'Talladega' alloy wheels including black headlight surrounds and metallic paint.



**Road hugging, 25 mm lowered sports suspension.
Guaranteed to raise your pulse.**

Model shown is new Golf R with optional 19" 'Talladega Black' alloy wheels including black headlight surrounds and metallic paint.

Equipment

Powerful, dynamic and advanced, the phenomenal new Golf R raises the benchmark for sports performance to unprecedented new levels. From the incredible 270 PS to the 25 mm lowered sports suspension, from the aerodynamic body shape to the quality craftsmanship within, everything is geared to deliver more driving excitement than ever before. Uncompromising, unbeatable, unequalled – experience the ultimate adrenaline buzz in the fastest Golf yet.



Bi-Xenon headlights combine dipped and main beams in one integrated unit, housed in a stylish glossy black casing that flows seamlessly into the radiator grille. Dynamic curve lighting and automatic range adjustment compensate for any change in the incline of the body, due to loading, braking or accelerating, ensuring the driver benefits continually from optimum illumination when driving at night. Newly designed separate daytime running lights utilise LED technology for clearer vision and also ensure your vehicle is visible in any weather. Headlight washers and a low washer fluid warning light are also included to help keep them clear.



High quality **aluminium insets** in the door sills feature the distinctive 'R' logo, highlighting the sports styling.



The rear **diffuser** in 'Gloss Black' accentuates the new Golf R's unique rear design, highlighting the race-inspired **body-coloured rear bumper**.



The **body-coloured rear spoiler** highlights the dynamic shape of the new Golf R's sporting body, while ensuring optimum roadholding through improved aerodynamics.



The **darkened rear light clusters** flow smoothly into the dynamic contours of the new Golf R and incorporate LED technology for the first time on a Golf, complementing its striking rear design and conveying its sporting prowess. LEDs not only have a longer service life, providing greater operational safety, but also give a stylish and attractive look to the rear tail lights.



'Gloss Black' door mirrors complement the front grille perfectly, while **integrated indicators** are clearly visible to other road users.



The **gloss black grille** with gleaming **chrome 'R' badge** gives the front of the new Golf R its distinctive appearance – elegant, understated, but hinting at the power within.



The **chrome twin centre exhaust tailpipe** is a unique design feature of the new Golf R, delivering the sound of the engine to the road.



White instrument lighting, with adjustable panel illumination and blue needles, creates a sporty appearance and can easily be read, whatever the light conditions.



The leather trimmed three-spoke multifunction steering wheel with stylish 'R' logo, 'Gloss Black' inserts and contrast stitching enables you to control the multifunction computer and radio functions both easily and safely. Specify the new Golf R with the DSG Direct Shift Gearbox and it comes equipped with paddle shift as standard, allowing quick gear changes without taking your hands off the steering wheel.



Eye-catching 'R' styling continues throughout the passenger compartment, which boasts the finest quality materials and the highest standards of craftsmanship. The front seats are upholstered in attractive Black 'Kyalami' cloth with side bolsters in Crystal Grey 'San Remo' alcantara, providing a sporty contemporary look. Contrast stitching provides the perfect finishing touch. Other stylish features include the 'R' logo on the head restraints of the front sports seats, an 'R' styled gear lever knob, 'R' kick plates and 'Silver Lane' decorative inserts in the dash. All combine to give the interior a real sports identity, and making any journey in the new Golf R one of pure, unadulterated excitement.

Model shown is Golf R 2.0 litre 270 PS DSG with metallic paint.



The RCD 310 radio/MP3 compatible CD player features eight speakers with an output of 4 x 20 watts, four in the front and four in the rear, plays files in MP3 and WMA formats, and also has an AUX-in socket for connection to an external multimedia source, such as an iPod or MP3 player.



The Multi Device Interface (MDI) with iPod and USB cables enables you to connect and charge a compatible device, while track selection is viewed and selected via the RCD 310 radio system's screen.



The multifunction computer (Highline) provides important information as you travel, such as average speed and fuel consumption, exterior temperature, range of the fuel tank and oil temperature. It also lets you know if the doors or boot are open.

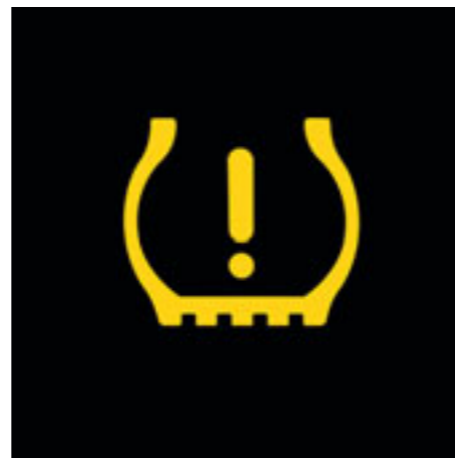


'Silver Lane' decorative inserts provide an elegant design detail in the dashboard, with the 'R' logo adding an extra touch of style.



The 2Zone electronic climate control with automatic air recirculation system features dual zone temperature control for the driver and front passenger, allowing each to select their individually preferred temperature.

Interior shown features optional Winter pack.



In the event of a change in air pressure, the flat tyre indicator symbol appears in the display of the multifunction computer, advising the driver to rectify the situation.



The Convenience pack comprises front footwell illumination, an automatic coming/leaving home lighting function, ensuring your surroundings are well lit. The dusk sensor activates the vehicle's headlights when light levels diminish (i.e. night driving and underground car parks), while the automatically dimming interior rear-view mirror and rain sensor provide extra safety and comfort.



Aluminium-look pedals add a refined touch, the anti-slip cover enhancing safety and performance.

Optional equipment

Practical and visual extras can be an extremely useful way of creating exactly the Golf R you desire. With this in mind, a selection of different options are available, each one ensuring your Golf R meets your individual requirements. This reflection of your personality and lifestyle makes the Golf R more irresistible than ever. So, why fight the temptation?



The **electric glass sunroof** is just as eye-catching from the outside as it is from the inside. Adding light and space, it fills the interior with additional natural light as well as fresh air.

Interior shown features optional 'Vienna' leather upholstery.



Image shown is for illustration purposes only and may not necessarily reflect UK specification.

Adaptive Chassis Control (ACC) adapts the damping control and shock absorption rate to the road conditions and driving style you require within milliseconds. At the touch of a button, you decide how firm or comfortable you wish to set the suspension, with a choice of three settings: Normal, Comfort or Sport.



'**Talladega**' 8J x 19 light alloy wheels with 235/35 R19 tyres, includes black headlight surrounds.



'**Talladega Black**' 8J x 19 light alloy wheels with 235/35 R19 tyres, includes black headlight surrounds.



Electrically heated, adjustable and **foldable door mirrors** with integrated indicators can be easily operated from the comfort of the driver's seat.



Rear parking sensors help you park your new Golf R with the greatest of ease, aided by an audible warning and a visual display via the Golf R's radio system's display.



'Recaro' sports seats emphasise the motorsport look of the new Golf R. The front sports seats in 'Vienna' leather have 'San Remo' alcantara seat centre sections and are ergonomically optimised to provide outstanding lateral support.



Optional in conjunction with the RCD 510 or RNS 510 DVD navigation/radio system, the 'Dynaudio' offers phenomenal sound, delivering 300 watts through eight high performance speakers, perfectly distributing acoustics throughout the vehicle.



A rear-view camera, integrated behind the Volkswagen badge on the rear tailgate provides a clear view to the rear of your vehicle, transmitting an undistorted live image to your radio or navigation system display, enabling you to manoeuvre quickly and easily into the most difficult parking space.

Must be ordered in conjunction with RCD 510 touch-screen radio or RNS 510 DVD touch-screen navigation/radio system.



The RCD 510 touch-screen radio/dash-mounted MP3 compatible six CD autochanger features a large 6½ inch colour display, with intuitive menu navigation and touch-screen operation. It also features an AUX-in socket for connection to an external multimedia source (e.g. iPod or MP3 player) and an SD memory card slot.



The RNS 510 DVD touch-screen navigation/radio system will guide you to your destination using all but the last two digits of a UK postcode and includes a 6½ inch colour display. It also plays DVDs (when the vehicle is stationary) and music from the DVD drive, 30 GB hard drive or via an SD card.

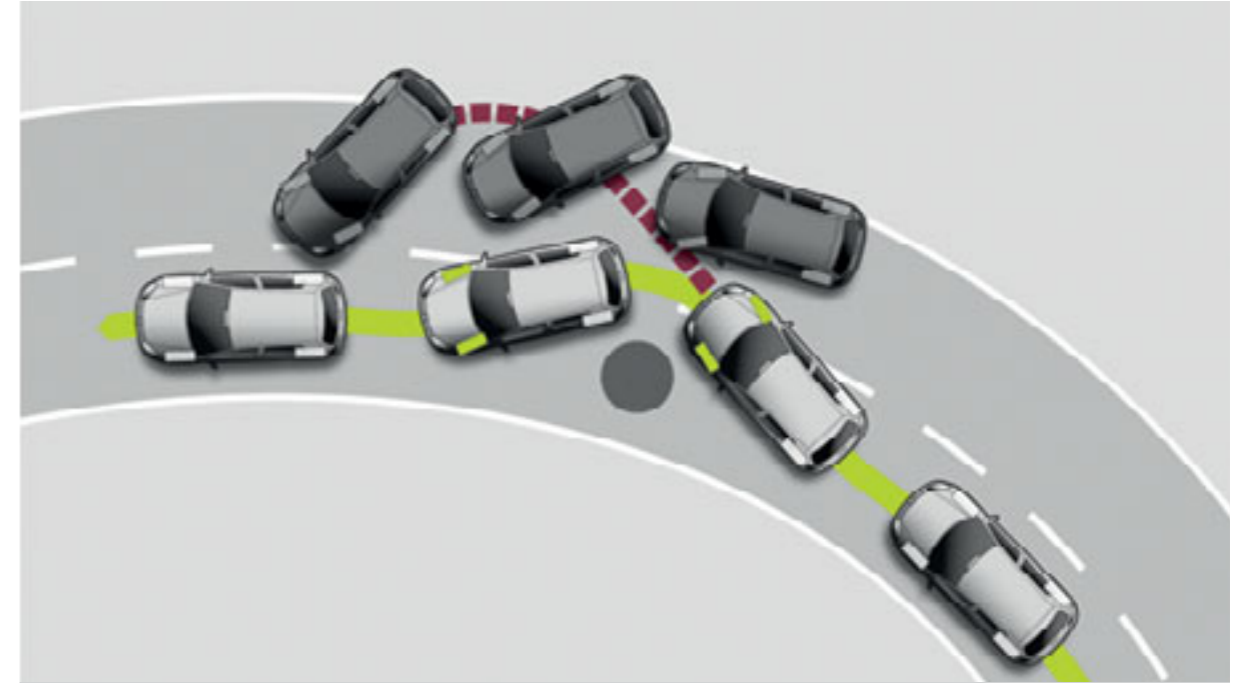
Safety

With no one to beat but itself, the new Golf R simply goes one better in improving the already high levels of safety offered by its predecessors. The result is a range of all-round safety precautions offering maximum protection in any eventuality, once more setting the standards for others to follow.



Image shown is for illustration purposes only and may not necessarily reflect UK specification.

Both driver and passengers can rely on a **comprehensive airbag system** comprising driver's and front passenger's airbags with front passenger's deactivation switch and a curtain airbag system with front seat side impact airbags for the driver and front passenger. Also, for the first time on a Volkswagen, the latest generation Golf is also fitted with a driver's knee airbag for added protection, particularly in the event of a head-on collision. Deployment of the airbags is activated by crash sensors. When an impact is registered, the airbag control unit ignites the gas generator, which then inflates the airbag within less than 40 milliseconds, helping to reduce injuries significantly.



The **Electronic Stabilisation Programme (ESP)** recognises critical driving situations and reacts in milliseconds by targeting brake and management systems, controlling the speed of individual wheels and helping to bring the vehicle under control. As a result the vehicle achieves maximum directional stability.



The two **whiplash-optimised front head restraints** not only ensure additional comfort, but also provide particularly effective support for the head and spine in the event of a collision.



The optional **rear seat side airbag system** not only protects rear seat passengers, but includes an optical warning informing the driver when rear seat occupants have not fastened their seat belts or have not fastened them correctly.

Rear seat side airbag system is only available on five-door models and not in conjunction with optional 'Recaro' sports seats.



The **darkened rear light clusters** incorporate **LED technology** for the first time on a Golf, complementing its striking rear design. LEDs not only have a longer service life, but also give a more stylish look to the rear lights.

Paint



Candy White
Non-Metallic
B4



Shadow Blue
Metallic
P6



Tornado Red
Non-Metallic
G2



Steel Grey
Metallic
X6



Rising Blue
Metallic
4C



Deep Black
Pearl Effect
2T



Reflex Silver
Metallic
8E



Blue Graphite
Pearl Effect
W9

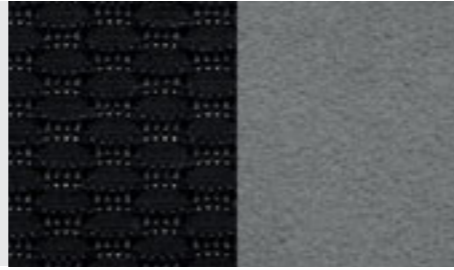
■ Standard ■ Optional at extra cost

Please note: Screen technology does not allow for exact reproduction of the paint colours.

Upholstery

Titan Black/Crystal Grey

Sports seats in 'Kyalami' cloth with 'San Remo' alcantara side bolsters
IH



Black

'Vienna' leather*
QW



Titan Black

'Recaro' sports seats in 'Vienna' leather* with 'San Remo' alcantara seat centre sections
IC



Standard Optional at extra cost

Please note: Screen technology does not allow for exact reproduction of the upholstery colours.

Combinations

	Seat upholstery	Carpet	Dashboard	Candy White (B4)	Tornado Red (G2)	Rising Blue Metallic (4C) *	Reflex Silver Metallic (8E) *	Shadow Blue Metallic (P6) *	Steel Grey Metallic (X6) *	Deep Black Pearl Effect (2T) *	Blue Graphite Pearl Effect (W9) *
Sports seats in 'Kyalami' cloth with 'San Remo' alcantara side bolsters Standard on R	Titan Black/Crystal Grey (IH)	Black	Titan Black	●	●	●	●	●	●	●	●
'Vienna' leather * † Optional on R	Black (QW)	Black	Titan Black	○	○	○	○	○	○	○	○
'Recaro' sports seats in 'Vienna' leather * † with 'San Remo' alcantara seat centre sections Optional on R	Titan Black (IC)	Black	Titan Black	○	○	○	○	○	○	○	○

* Metallic and pearl effect paints and 'Vienna' leather upholstery are optional at extra cost.
† Some parts of leather interior will contain artificial leather.

● Standard.
○ Optional at extra cost.
– Not available.



The six speed manual gearbox transmits power with short, accurate shifts and very smooth handling, making it easy to drive at the right engine speed.



The dual-clutch Direct Shift Gearbox (DSG) represents a milestone in the development of the latest gearbox technology. This innovative automatic transmission shifts smoothly and imperceptibly into the pre-selected next gear within a split second, so not only is this six speed gearbox very dynamic, its level of efficiency is almost as economical as its manual counterpart.

Engine and gearboxes

Whichever gearbox you select to couple with the phenomenal 2.0 litre TSI 270 PS engine, you can be sure of outstanding performance, excellent torque and impressive fuel consumption considering the Golf R's incredible power output. That's because advanced Volkswagen TSI engine technology delivers phenomenal results, whatever the length of your journey.



A combination of direct fuel injection and intelligent turbocharging technology ensures the 2.0 litre TSI 270 PS petrol engine delivers high performance and torque, complementing the Golf R's sporty character perfectly.

2.0 litre TSI 270 PS 4MOTION

Technical specification

		Manual	Automatic DSG	Notes
Engine	Engine type	Four cylinder petrol	Four cylinder petrol	<p>01) The maximum power output figures are quoted in PS (or Pferdestärke, which is the metric equivalent of horsepower). To convert from metric to imperial horsepower, divide the PS figure by 1.0139.</p> <p>02) Figures are calculated in accordance with manufacturer's criteria. The individual unladen weight depends on the specification of the vehicle, this then reduces the possible payload accordingly. The unladen weight and payload both include the fuel tank 90% full, driver (68 kg) and luggage (7 kg) in line with EU directive 95/48. Unladen weight shown refers to 3-door models. The unladen weight of 5-door models will increase by 30 kg.</p> <p>03) Thanks to the knock control, unleaded four star (at least 95 RON) can be used instead of unleaded Super plus. In order to achieve maximum fuel consumption benefits on the TSI engine, Ultra Low Sulphur Petrol (ULSP) must be used.</p> <p>04) Official fuel consumption according to EU Directive 99/94. The consumption calculation according to 1999/100/EC is based on the actual unladen weight of the vehicle. Additional specifications can lead to a higher weight class and hence to consumption figures of this higher weight class. The driving style, road and traffic conditions, environmental influences and vehicle condition can in practice lead to consumption figures, which may differ from those calculated with this standard.</p> <p>05) The weight of a vehicle will influence the level of CO₂ emission it produces; as a result, vehicles with higher levels of specification and factory-fitted options may emit higher levels of CO₂.</p>
	Cubic capacity, ltrs/cc	2.0/1984	2.0/1984	
	Max. output, PS ⁽⁰¹⁾ /kW at rpm	270/199 6000	270/199 6000	
	Max. torque, lbs.ft./Nm at rpm	258/350 2500-5000	258/350 2500-5000	
	Gearbox	Six speed manual	Six speed auto DSG	
Weights, kgs	Unladen weight ⁽⁰²⁾	1521	1541	
	Gross vehicle weight	2010	2030	
	Payload ⁽⁰²⁾	564	564	
	Axle load limit: Front Rear	1090 970	1110 970	
Load limit, kgs	Max. roof load	75	75	
Performance	Top speed (where the law permits), mph (km/h)	155 (250)	155 (250)	
	Acceleration, secs 0 - 62 mph	5.7	5.5	
	ABI insurance group, 1 - 20 (1 - 50) [†]	18E (36E)	18E (36E)	
Environmental information	Fuel grade, minimum	Unleaded, 95 RON ⁽⁰³⁾	Unleaded, 95 RON ⁽⁰³⁾	
	Fuel tank capacity, galls/ltrs	13.2/60	13.2/60	
	Official fuel consumption, mpg/ltr per 100 km ⁽⁰⁴⁾			
	Urban	23.9/11.8	25.2/11.2	
	Extra-urban	42.2/6.7	41.5/6.8	
	Combined	33.2/8.5	33.6/8.4	
	Official CO ₂ emission, g/km ⁽⁰⁵⁾	199	195	
	Emission class	EURO 5	EURO 5	
Noise, dB	74.0	73.0		

† Please note, as of December 2009 the insurance industry switched from the current rating system of groups 1 - 20 to a new 1 - 50 insurance scale.

Technology

Engine

- Front transverse-installed engine
- 2.0 litre/270 PS⁽⁰¹⁾ (199 kW) petrol engine: four cylinder in-line engine, aluminium cylinder head, four valves per cylinder with roller rocker finger valve drive, electronic direct injection, variable inlet valve timing, programmed ignition with cylinder-selective anti-knock control, four single spark ignition coils, longlife spark plugs, exhaust gas turbocharger, three-way close-coupled pre-catalyst and underbody catalyst, lambda control

Transmission

- Four wheel drive with electronically controlled multi-plate clutch. Hydraulically operated single-plate dry clutch with asbestos-free lining via a six speed manual or six speed auto DSG gearbox with double joint half axles (wet clutch on six speed DSG models)
- Six speed manual: 2.0 litre TSI 270 PS
- Six speed automatic DSG: 2.0 litre TSI 270 PS

Steering

- Electro-mechanical steering rack
- Collapsible, height and lengthways adjustable safety steering column

Brakes

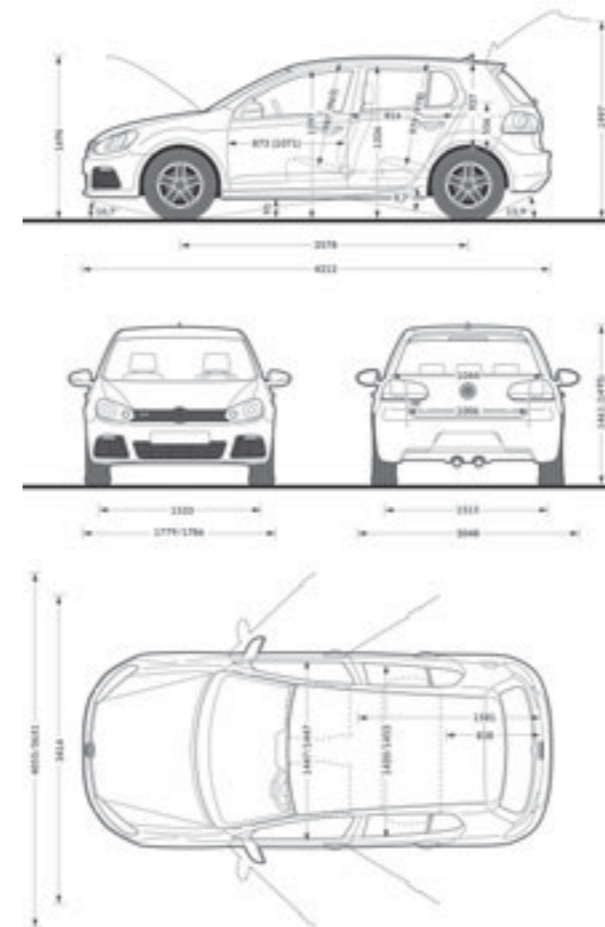
- Electronically controlled Anti-lock Braking System (ABS) with Electronic Brake-pressure Distribution (EBD)
- Diagonal twin-circuit brake system with inner-ventilated front disc brakes and rear disc brakes
- Asbestos-free brake pads
- Hydraulic Brake Assist (HBA)

Running gear

- Electronic Stabilisation Programme (ESP) including Electronic Differential Lock (EDL), Traction Control (ASR) and Countersteer Support
- Front suspension through coil springs with telescopic shock absorbers, all elements integrated in chassis legs
- Rear suspension with gas pressure shock absorbers and separate springs
- Wheel control: front through chassis legs and (lower) triangular wishbones (directionally stabilising steering roll radius)
- Wheel control: rear through four-link suspension with independent wheel suspension
- Front and rear anti-roll bar

Dimensions

Maximum luggage capacity, litres VDA measuring method using 200 x 100 x 50 mm blocks	With rear seat upright	275
	With rear seat folded	1230
Exterior dimensions	Length, mm	4212
	Width – excluding door mirrors, 3 door/5 door, mm	1779/1786
	Width – opened front doors – 3 door, mm	4055
	Width – opened front doors – 5 door, mm	3631
	Height, mm (with antenna)	1461 (1493)
	Height – opened bonnet/floor, mm	1696
	Height – opened tailgate/floor, mm	1997
	Wheelbase, mm	2578
Turning circle, mm	10900	
Interior dimensions	Effective headroom – front, mm (with sunroof)	987 (965)
	Effective headroom – rear, mm (with sunroof)	979 (978)
	Elbow width, front – 3 door/5 door, mm	1447/1447
	Elbow width, rear – 3 door/5 door, mm	1452/1420



Volkswagen service

The Volkswagen Warranty.

Three-year Warranty.

All Volkswagen new Golf Rs come with a three-year/60,000 miles warranty, which protects your car against the failure of most mechanical and electrical components due to manufacturing defects. This comprises a two-year manufacturer's warranty with unlimited mileage plus a further one-year/60,000 miles (whichever is soonest) Retailer Warranty. Should the mileage exceed 60,000 miles within the first two years, the manufacturer's two-year warranty will still be valid. If an additional warranty for subsequent years or higher mileage is desired, it may be purchased from an authorised Volkswagen retailer or repairer; however, this additional warranty must be purchased before the mileage reaches 60,000*. Full details of the three-year warranty are available from your authorised Volkswagen retailer or repairer.

* All warranty work must be completed by an authorised Volkswagen retailer or repairer.

Three-year Paint Warranty.

The paintwork of the new Golf R is covered against manufacturing defects for a period of three years. Naturally, the new Golf R must be cared for in compliance with the operating instructions which will be found in your vehicle handbook. Please consult your authorised Volkswagen retailer or repairer for full warranty details.

12-year Body Protection Warranty.

The internal body sections and panels of the new Golf R are covered against rusting through from the inside for 12 years. Naturally, the new Golf R must be cared for in compliance with the operating instructions. Please consult your authorised Volkswagen retailer or repairer for full warranty details.

Approved Accessories.

A comprehensive range of accessories from alloy wheels to carpet mats is available to complement the factory-fitted option list. Volkswagen approved accessories purchased from and fitted by your authorised Volkswagen retailer at the point of vehicle sale will also benefit from the three-year vehicle warranty.

Service Intervals.

Volkswagen are pleased to offer you a choice on how your new Golf R is serviced. The appropriate selection is entirely dependent on how the car is likely to be driven and its general use. To help you identify which type of service would be most suitable, please refer to the following guide.

The Time and Distance Service is recommended for vehicles that will cover less than 10,000 miles in 12 months and if the vehicle is likely to be used in the following way:

- Predominantly urban driving, short journeys with frequent cold starts.
- Activities regularly producing high engine loading, e.g. frequent hill climbs, driving with vehicle fully loaded and towing.
- Uneconomical driving style using high rpms with heavy acceleration and heavy braking.

The service intervals for the Time and Distance Service are as follows:

- Oil change service
Every 10,000 miles/1 year (whichever is soonest).
- Interval service
Every 20,000 miles/2 years (whichever is soonest).
- Inspection service
Every 40,000 miles/3 years (whichever is soonest).

The LongLife Service is recommended for vehicles with a daily mileage of more than 25 miles where the vehicle is driven regularly mainly on longer distance journeys. The vehicle is driven mainly at a constant speed with minimum vehicle and engine loading, minimal towing and driven in an economical manner.

With the LongLife Service the vehicle can cover anywhere between 10,000[†] and a maximum of 18,000[†] miles or 24 months (whichever is soonest) between oil changes. Inspection service is typically in the third year of ownership and thereafter every second year, for vehicles with an approximate annual mileage of 10,000 miles.

[†] Please note that mileages are approximate as the service indicator system uses kilometres as the distance measurement. Please consult your authorised Volkswagen retailer or repairer for advice and full details.

Extended Warranty.

You may purchase additional protection from your authorised Volkswagen retailer or repairer, or contact 0870 9000 115.

Volkswagen Insurance[‡].

We want you to start enjoying your new car from day one and thanks to Volkswagen Insurance complimentary seven day cover, you can. Call free on 0800 316 7892 (lines are open Monday to Friday 8 am - 9 pm and Saturday 9 am - 5 pm), provide a few details and a cover note will be sent to your retailer. They will then tax your car and you can drive it away.

Visit www.insurewithvolkswagen.co.uk for details of the full range of insurance products available. Here you can also get a quote for your annual car insurance and buy it online too. All of our insurance products are designed to ease the pain of making a claim.

[‡] Volkswagen Insurance is a trading name of Volkswagen Insurance Service (Great Britain) Limited, an appointed representative of Volkswagen Financial Services (UK) Limited, Brunswick Court, Yeomans Drive, Blakelands, Milton Keynes MK14 5LR. Registered in England number 2835230. Volkswagen Insurance is sold, underwritten and administered by Allianz Insurance plc registered in England number 84638. Registered office 57 Ladymead, Guildford, Surrey GU1 1DB. Volkswagen Financial Services (UK) Limited and Allianz Insurance plc are authorised and regulated by the Financial Services Authority. Volkswagen Financial Services (UK) Limited and Allianz Insurance plc are not part of the same corporate group.

Volkswagen Finance[‡].

Volkswagen Finance specialises in providing funding solutions for Volkswagen drivers. Whether your Volkswagen is for private or business use, you can choose from a range of funding options.

- Solutions – a personal contract plan
- Hire purchase
- Lease purchase
- Finance lease
- Contract hire

With all Volkswagen Finance products you can choose a fixed-cost maintenance plan to help you budget for your servicing and maintenance costs.

No matter what finance product you choose, your local Volkswagen retailer will be able to provide you with a personalised quote that could meet your budget and vehicle needs.

[‡] Volkswagen Finance is a trading name of Volkswagen Financial Services (UK) Limited. An offer of finance depends on certain conditions. Available to people over 18 in the UK only.

Volkswagen Roadside Assistance.

Every new car is registered for Volkswagen Roadside Assistance for one year. This provides vehicle home and roadside recovery in the unlikely event of a breakdown in the UK and Europe (subject to conditions). Volkswagen Roadside Assistance can also be purchased for subsequent years. For full details, please contact your authorised Volkswagen retailer or repairer.

Tax Free Sales.

For full details, please contact your authorised Volkswagen retailer.

CO₂ Emission.

Increased weight of a vehicle, including higher trim levels and the addition of options will have a detrimental influence on the level of fuel consumption and CO₂ emissions produced.

The CO₂ and fuel consumption figures are obtained from tests on a representative vehicle of the type, conducted and approved in accordance with Council Directive 80/1268/EEC as amended by Directive 1999/100/EC (or later) on the approximation of the laws of the member states relating to the carbon dioxide emissions and the fuel consumption of motor vehicles.

Please Note:

Some illustrations in this brochure do not necessarily reflect UK specifications and may not be available. In particular, controls and some items of equipment are positioned differently for the UK.

The specifications contained in this brochure are for information purposes only and are subject to change. If you require any specific feature, you must consult your authorised Volkswagen retailer who is regularly updated with any change in specification. Please check model availability and full specification details with your authorised Volkswagen retailer prior to ordering.

Note: We would like to advise you that telephone calls to Volkswagen Customer Care may be monitored and recorded as part of our training and quality assurance processes. All our monitoring and recording processes meet Ofcom regulations.