

VOLVO XC60



The XC60 Range At A Glance.

XC60 S

The S model comes with all the features you would expect from Volvo. Beyond the 17" Segin alloy wheels and RSC (Roll Stability Control) system, the S offers front fog lights, roof rails and rear spoiler. Interior details include electronic climate control, information centre, cruise control, leather steering wheel with remote audio controls, aluminium trim and performance sound audio system with aux input and CD player.

XC60 SE

The SE is further enhanced with rain sensor, power driver's seat with memory and autofolding power door mirrors with ground lights. Added luxury includes Eriksberg T-Tec/Textile upholstery, autodimming rear view mirror with compass and chrome window trim.

XC60 SE LUX

The top of the line SE Lux is the ultimate in luxury. Above and beyond SE specification, the SE Lux has chronographic instrument dials, leather upholstery, Nordic Light Oak natural wood trim and both front seats are powered and heated. Further enhancements include floor mats and chrome detailing. 18" Merac alloy wheels, active bending headlamps and rear park assist are all standard.

XC60 R-DESIGN

A unique power steering system and 18" Cratus alloys wheels together with the R-DESIGN chassis enhance the handling of this model. Visual presence is complemented with silver matt door mirrors, unique rear exhaust pipes, together with R-DESIGN Leather-faced Upholstery, front sport seats with side support, R-DESIGN leather steering wheel and unique aluminium interior trim.

XC60 R-DESIGN SE

This model combines the luxury features of the SE with the unique R-DESIGN interior details, exterior sports styling and R-DESIGN chassis.

PREMIUM

The Premium model is the ultimate upgrade. The combination of Leather-faced Upholstery, Satellite Navigation System (RTI), High Performance Audio System and DAB (Digital Audio Broadcasting) Radio is designed to complement the existing high level of specification whichever model you choose.

XC60 DRIVE

The DRIVE badge is given to cars in the Volvo range that have the best environmental performance. The 2.4D DRIVE model is equipped with a conventional diesel engine and manual gearbox optimised for extra-low fuel consumption as well as being tailored specifically for low rolling resistance and reduced air drag. With CO₂ as low as 159 g/km and fuel consumption of up to 47.1 mpg on a combined cycle, this makes the 2.4D DRIVE an attractive choice without compromising on driving pleasure. (DRIVE is not currently available as geartronic).



On the road.

How much will it cost to get behind the wheel of your own Volvo XC60? Simply decide which model variant and engine type are right for you and then take a look at the full price list.

XC60 S

	Basic £	VAT £	Rec Retail Price £	On the Road Price £
DIESEL				
2.4D DRIVe (175 PS) S ⁽ⁱ⁾	£21,452.17	£3,217.83	£24,670.00	£25,395.00
D5 AWD (205 PS) S	£23,134.78	£3,470.22	£26,605.00	£27,355.00

XC60 SE

	Basic £	VAT £	Rec Retail Price £	On the Road Price £
PETROL				
T6 AWD (285 PS) SE Geartronic	£27,186.96	£4,078.04	£31,265.00	£32,245.00
T6 AWD (285 PS) SE Geartronic Premium ⁽ⁱⁱ⁾	£29,143.48	£4,371.52	£33,515.00	£34,495.00
DIESEL				
2.4D DRIVe (175 PS) SE ⁽ⁱ⁾	£22,756.52	£3,413.48	£26,170.00	£26,895.00
2.4D DRIVe (175 PS) SE Premium ⁽ⁱⁱ⁾	£24,713.04	£3,706.96	£28,420.00	£29,145.00
D5 AWD (205 PS) SE	£24,439.13	£3,665.87	£28,105.00	£28,855.00
D5 AWD (205 PS) SE Premium ⁽ⁱⁱ⁾	£26,395.65	£3,959.35	£30,355.00	£31,105.00





XC60 SE LUX

	Basic £	VAT £	Rec Retail Price £	On the Road Price £
PETROL				
T6 AWD (285 PS) SE Lux Geartronic	£29,578.26	£4,436.74	£34,015.00	£34,995.00
T6 AWD (285 PS) SE Lux Geartronic Premium ⁽ⁱⁱ⁾	£30,882.61	£4,632.39	£35,515.00	£36,495.00
DIESEL				
2.4D DRIVe (175 PS) SE Lux ⁽ⁱ⁾	£25,147.83	£3,772.17	£28,920.00	£29,645.00
2.4D DRIVe (175 PS) SE Lux Premium ⁽ⁱⁱ⁾	£26,452.17	£3,967.83	£30,420.00	£31,145.00
D5 AWD (205 PS) SE Lux	£26,830.43	£4,024.57	£30,855.00	£31,605.00
D5 AWD (205 PS) SE Lux Premium ⁽ⁱⁱ⁾	£28,134.78	£4,220.22	£32,355.00	£33,105.00

XC60 R-DESIGN

	Basic £	VAT £	Rec Retail Price £	On the Road Price £
DIESEL				
2.4D DRIVe (175 PS) R-DESIGN ⁽ⁱ⁾	£24,017.39	£3,602.61	£27,620.00	£28,345.00
2.4D DRIVe (175 PS) R-DESIGN Premium ⁽ⁱⁱ⁾	£25,321.74	£3,798.26	£29,120.00	£29,845.00
D5 AWD (205 PS) R-DESIGN	£25,700.00	£3,855.00	£29,555.00	£30,305.00
D5 AWD (205 PS) R-DESIGN Premium ⁽ⁱⁱ⁾	£27,004.35	£4,050.65	£31,055.00	£31,805.00

XC60 R-DESIGN SE

	Basic £	VAT £	Rec Retail Price £	On the Road Price £
PETROL				
T6 AWD (285 PS) R-DESIGN SE Geartronic	£29,404.35	£4,410.65	£33,815.00	£34,795.00
T6 AWD (285 PS) R-DESIGN SE Geartronic Premium ⁽ⁱⁱ⁾	£30,708.70	£4,606.30	£35,315.00	£36,295.00
DIESEL				
2.4D DRIVe (175 PS) R-DESIGN SE ⁽ⁱ⁾	£24,973.91	£3,746.09	£28,720.00	£29,445.00
2.4D DRIVe (175 PS) R-DESIGN SE Premium ⁽ⁱⁱ⁾	£26,278.26	£3,941.74	£30,220.00	£30,945.00
D5 AWD (205 PS) R-DESIGN SE	£26,656.52	£3,998.48	£30,655.00	£31,405.00
D5 AWD (205 PS) R-DESIGN SE Premium ⁽ⁱⁱ⁾	£27,960.87	£4,194.13	£32,155.00	£32,905.00

(i) Geartronic variant is not badged DRIVe.

(ii) All Premium models include Leather-faced Upholstery, Satellite Navigation System (RTI), DAB (Digital Audio Broadcasting) Radio and High Performance Sound Audio System.

The right equipment.

It's essential that your Volvo comes equipped with everything you need. Below you'll find the standard equipment lists for each model variant, plus optional equipment to personalise your Volvo XC60. And as you'd expect, there is an array of industry-leading, cutting edge safety innovations.

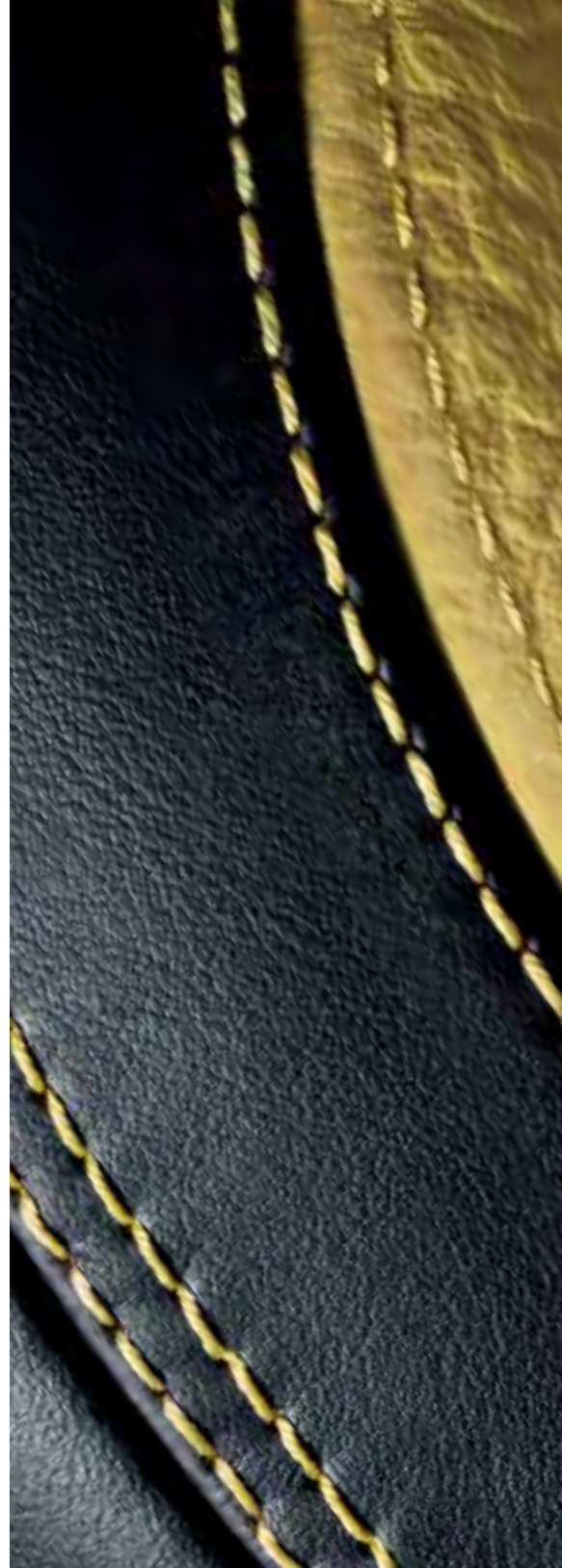
STANDARD EQUIPMENT - INTERIOR	S	SE	SE LUX	REDESIGN	REDESIGN SE
ECC (Electronic Climate Control) with AQS (Air Quality System) and Pollen Filter	•	•	•	•	•
B Pillar Ventilation	•	•	•	•	•
Information Centre	•	•	•	•	•
Cruise Control	•	•	•	•	•
Speed Dependent Steering System with 3 Settings (T6 only)		•	•		
REDESIGN Unique Power Steering System				•	•
Front and Rear Power Windows	•	•	•	•	•
Illuminated Driver and Passenger Vanity Mirrors	•	•	•	•	•
Front and Rear Reading Lights	•	•	•	•	•
Autodimming Rear View Mirror with Compass and Humidity Sensor		•	•		•
Front Centre Armrest with Cupholders	•	•	•	•	•
Grocery Bag Holder		•	•		•
12V Socket (Front and Rear Tunnel Console/Cargo Area)	•	•	•	•	•
Power Driver's Seat with Seat Memory		•	•		•
Power Passenger Seat			•		
Height Adjustable Driver and Passenger Seats with Lumbar Support	•	•	•	•	•
Forward Folding Front Passenger Seat	•	•	•	•	•
Versatile Split-folding Rear Seat (40%/20%/40%)	•	•	•	•	•
REDESIGN Front Sports Seats with Side Support				•	•
Heated Front Seats			•		
Off Black Leather Steering Wheel and Gear Knob (With Chrome Trim – SE and SE Lux)	•	•	•		
REDESIGN Leather Sports Steering Wheel with Logo				•	•
REDESIGN Sports Gear Knob				•	•
Steering Wheel Remote Audio Controls	•	•	•	•	•
Chrome Rotary Knobs	•	•	•	•	•
Chrome Trim on Air Vents	•	•	•	•	•
Chrome Mannequin on Centre Console			•		
Chronograph Instrument Dials (D5, T6 and All SE Lux)	•	•	•		
REDESIGN Blue Instrument Dials				•	•
Height and Reach Adjustable Steering Column	•	•	•	•	•
Brushed Aluminium Trim	•	•			
Nordic Light Oak Trim			•		
REDESIGN Aluminium Trim				•	•
Lomma Textile Upholstery	•				
Eriksberg T-Tec/Textile Upholstery		•			
Leather-faced Upholstery (Standard on SE Premium and SE Lux models only)		•	•		
REDESIGN Leather-faced Sports Upholstery with Logo				•	•
Floor Mats			•		
REDESIGN Sports Floor Mats				•	•
REDESIGN Aluminium Sports Pedals				•	•
Performance Sound Audio System – 1 x CD/Radio, 4 x 20W Amplifier, Aux Input and 6 Speakers	•	•	•	•	•
High Performance Sound Audio System – 1 x CD radio, 4 x 40 W Amplifier, USB and Aux Input (MP3/WMA Compatible) and 8 Speakers (Standard on Premium models only)		•	•	•	•
DAB (Digital Audio Broadcasting) Radio (Standard on Premium models only)		•	•	•	•
Satellite Navigation System (RTI) with RDS-TMC, Remote Control with Europe DVD Maps (Standard on Premium models only)		•	•	•	•

STANDARD EQUIPMENT - EXTERIOR

	S	SE	SE LUX	R ^{DESIGN}	R ^{DESIGN} SE
17" Segin (Silver Stone) Alloy Wheels – 235/65 R17 V Tyres	•	•			
18" Merac (Silver Bright) Alloy Wheels – 235/60 R18 V Tyres			•		
18" Cratus (Silver Bright Matt) – 235/60 R18 V Tyres				•	•
Locking Wheel Nuts	•	•	•	•	•
Tyre Sealant Kit	•	•	•	•	•
Active Bending Headlamps with Headlamp Cleaning System			•		
Autofolding Power Door Mirrors with Ground Lights		•			•
Front Fog Lights	•	•	•		
Heated Washer Nozzles			•		
Power Adjustable and Heated Door Mirrors	•	•	•	•	•
Rear Spoiler	•	•	•	•	•
Rain Sensor – Automatic Windscreen Wiper Activation		•	•		•
Roof Rails (Silver – SE Lux)	•	•	•	•	•
Chrome Window Trim		•	•	•	•
Colour Co-ordinated Door Mirrors	•	•	•		
R ^{DESIGN} Silver Matt Door Mirrors				•	•
R ^{DESIGN} Silver Matt Grille with Logo				•	•
Rear Park Assist			•		
Twin Aluminium Tail Pipes (T6 AWD and D5 AWD only)		•	•		
R ^{DESIGN} Sports Twin Aluminium Tail Pipes				•	•
R ^{DESIGN} Front and Rear Skidplates and Side Scuff Plates				•	•
R ^{DESIGN} Colour Co-ordinated Lower Sill and Wheel Arch Mouldings				•	•
R ^{DESIGN} Sports Chassis				•	•
Electronic All Wheel Drive System with Instant Traction™ (Haldex Coupling) (T6 AWD and D5 AWD only)	•	•	•	•	•

STANDARD EQUIPMENT - SAFETY & SECURITY

	S	SE	SE LUX	R ^{DESIGN}	R ^{DESIGN} SE
City Safety	•	•	•	•	•
Dual Stage Driver and Passenger Airbags	•	•	•	•	•
SIPS (Side Impact Protection System)	•	•	•	•	•
Dual Chamber SIPS Airbags	•	•	•	•	•
IC (Inflatable Curtain)	•	•	•	•	•
RSC (Roll Stability Control)	•	•	•	•	•
ROPS (Roll Over Protection System)	•	•	•	•	•
WHIPS (Whiplash Protection System)	•	•	•	•	•
ABS (Anti-lock Brake System) and FBS (Fading Brake Support) with HBA (Hydraulic Brake Assist) and EBD (Electronic Brake Distribution), RAB (Ready Alert Brakes) and EBA (Emergency Brake Assist)	•	•	•	•	•
DSTC (Dynamic Stability and Traction Control)	•	•	•	•	•
Hill Descent Control (T6 AWD and D5 AWD only)		•	•		•
5 Three Point Seat Belts	•	•	•	•	•
Seat Belt Pre-tensioners (Front and Rear)	•	•	•	•	•
Pre-prepared Restraints	•	•	•	•	•
Head Restraints – All 5 Seats	•	•	•	•	•
ISOFIX Attachment (Rear Seats)	•	•	•	•	•
Anti-theft Alarm including Immobiliser, Volume Sensor and Level Sensor	•	•	•	•	•
Key Integrated Remote Control Central Locking including Fuel Flap with Deadlocking System and Auto Open/Close Power Windows/and Sunroof (if ordered)	•	•	•	•	•
Tinted Windscreen	•	•	•	•	•
Load Cover (Cargo Area) with Load Protection Net	•	•	•	•	•
4 Aluminium High Level Anchor Points in Cargo Area	•	•	•	•	•
Lockable Load Floor	•	•	•	•	•
Visible VIN Plate	•	•	•	•	•
Day Running Lights	•	•	•	•	•
Headlamp Levelling System	•	•	•	•	•
Adaptive Brake Lights including High Level LED Brake Lights	•	•	•	•	•
Power Parking Brake	•	•	•	•	•
Side Marker Illumination	•	•	•	•	•
Home Safe and Approach Lighting	•	•	•	•	•
IDIS (Intelligent Driver Information System)	•	•	•	•	•
Warning Triangle	•	•	•	•	•
First Aid Kit	•	•	•	•	•



OPTIONAL EQUIPMENT - SAFETY & SECURITY	Basic £	VAT £	Rec Retail Price £	S	SE	SE LUX	R-DESIGN	R-DESIGN SE
BLIS (Blind Spot Information System) with Autofolding Power Door Mirrors with Ground Lights	£565.22	£84.78	£650.00	o	u (£450)	u (£450)	o	u (£450)
Passenger Airbag Cut Off Switch	£21.74	£3.26	£25.00	o	o	o	o	o
Dark Tinted Windows (Rear Side Doors and Cargo Area)	£217.39	£32.61	£250.00	o	o	o	o	o
LDW (Lane Departure Warning) with DAC (Driver Alert Control) ⁽ⁱ⁾	£434.78	£65.22	£500.00	o	o	o	o	o
ACC (Adaptive Cruise Control) with Distance Alert and Collision Warning with Auto Brake ⁽ⁱⁱ⁾	£1,130.43	£169.57	£1,300.00	o	o	o	o	o
PCC (Personal Car Communicator) with Heartbeat Sensor and Keyless Drive	£434.78	£65.22	£500.00	o	o	o	o	o
Hill Descent Control (T6 AWD and D5 AWD only)	£152.17	£22.83	£175.00	o	●	●	o	●
360° Laminated Windows including Cargo Area (Front Side Windows are Water Repellent)	£391.30	£58.70	£450.00	o	o	o	o	o
IR (Infrared) Reflective Glass Windscreen	£130.43	£19.57	£150.00	n/a	o	o	n/a	o
Power Child Locks (Rear Doors)	£65.22	£9.78	£75.00	o	o	o	o	o

OPTIONAL EQUIPMENT - EXTERIOR	Basic £	VAT £	Rec Retail Price £	S	SE	SE LUX	R-DESIGN	R-DESIGN SE
Black Paint (Solid)	£217.39	£32.61	£250.00	o	o	o	n/a	n/a
Metallic/Pearlescent Paint	£521.74	£78.26	£600.00	o	o	o	o	o
Inscription™ Paint	£673.91	£101.09	£775.00	o	o	o	o	o
17" Segin (Silver Stone) Alloy Wheels – 235/65 R17 V Tyres	-	-	-	●	●	nco	n/a	n/a
18" Mantus (Silver Stone) Alloy Wheels – 235/60 R18 V Tyres	£652.17	£97.83	£750.00	o	o	nco	n/a	n/a
18" Merac (Silver Bright) Alloy Wheels – 235/60 R18 V Tyres	£652.17	£97.83	£750.00	o	o	●	n/a	n/a
20" Cratus (Silver Bright Matt) Alloy Wheels – 255/45 R20 V Tyres	£1,043.48	£156.52	£1,200.00	n/a	n/a	n/a	o	o
Tempa Spare Wheel and Jack Kit	-	-	-	nco	nco	nco	nco	nco
Power Tailgate	£304.35	£45.65	£350.00	o	o	o	o	o
Autofolding Power Door Mirrors with Ground Lights	£173.91	£26.09	£200.00	o	●	●	o	●
Rear Park Assist	£304.35	£45.65	£350.00	o	o	●	o	o
Front and Rear Park Assist	£565.22	£84.78	£650.00	o	o	u (£300)	o	o
Park Assist Camera ⁽ⁱⁱ⁾	£521.74	£78.26	£600.00	o	o	o	o	o
Load Compensating Suspension	£434.78	£65.22	£500.00	o	o	o	n/a	n/a
Active Four-C Chassis (Continuously Controlled Chassis Concept) ⁽ⁱⁱⁱ⁾	£956.52	£143.48	£1,100.00	o	o	o	n/a	n/a
Rain Sensor – Automatic Windscreen Wiper Activation	£130.43	£19.57	£150.00	o	●	●	o	●

● = Standard, o = optional, n/a = not available, nco = no cost option, u (£) = upgrade, ® = Registered Trademark

(i) Must be ordered in conjunction with rain sensor. Cannot be ordered in conjunction with IR Reflective Glass Windscreen. Humidity Sensor will be removed

(ii) Must be ordered in conjunction with Satellite Navigation System (RTI)

(iii) Active Four-C Chassis cannot be combined with Load Compensating Suspension

(iv) Heated Rear Seats must be combined with Heated Front Seats on S, SE, R-DESIGN and R-DESIGN SE. Cannot be combined with Family Pack

(v) Must be ordered in conjunction with Classic Wood Trim

(vi) Cannot be ordered in conjunction with Nordic Light Oak Trim

(vii) Must be ordered in conjunction with High Performance Audio or Dynaudio Premium Sound Audio System

(viii) If a 6 x CD Player is ordered, the standard USB port is unaffected

(ix) Dolby and Pro Logic Surround Sound™ are trademarks of Dolby Laboratories Licensing Corporation

(x) Cannot be ordered in conjunction with Dual Band Integrated GSM Telephone and Volvo On Call

(xi) Volvo On Call includes Safety package (Security package available at additional cost)

(xii) Must be ordered in conjunction with accessory Rubber Floor Mats and Luggage Compartment Mat. CZIP cannot be combined with front and rear Ashtray with Cigarette Lighter

(xiii) Cannot be ordered in conjunction with Heated Rear Seats

(xiv) Must be ordered in conjunction with Autofolding Power Door Mirrors





OPTIONAL EQUIPMENT - INTERIOR	Basic £	VAT £	Rec Retail Price £	S	SE	SE LUX	REDESIGN	REDESIGN SE
Geartronic Transmission (Standard T6 AWD)	£1,217.39	£182.61	£1,400.00	o	o	o	o	o
Speed Dependent Steering System with 3 Settings (Standard T6 AWD)	£195.65	£29.35	£225.00	o	o	o	n/a	n/a
Panoramic Laminated Power Glass Tilt and Slide Sunroof	£869.57	£130.43	£1,000.00	o	o	o	o	o
Autodimming Rear View Mirror with Compass and Humidity Sensor	£217.39	£32.61	£250.00	o	●	●	o	●
Grocery Bag Holder	£86.96	£13.04	£100.00	o	●	●	o	●
Rear Centre Armrest with Cupholders and Storage	£30.43	£4.57	£35.00	o	o	o	o	o
Front and Rear Ashtray with Cigarette Lighter	-	-	-	nco	nco	nco	nco	nco
Power Driver and Passenger Seats with Driver's Seat Memory ^(xiv)	£1,043.48	£156.52	£1,200.00	o	u (£600)	●	o	u (£600)
Heated Front Seats	£217.39	£32.61	£250.00	o	o	●	o	o
Heated Rear Seats ^(iv)	£217.39	£32.61	£250.00	o	o	o	o	o
Leather/Classic Wood Gear Knob Inserts (Geartronic Only) ^{(v)(vi)}	£43.48	£6.52	£50.00	o	o	o	n/a	n/a
Brushed Aluminium Trim	-	-	-	●	●	nco	n/a	n/a
Nordic Light Oak Trim	£217.39	£32.61	£250.00	o	o	●	n/a	n/a
Classic Wood Trim	£217.39	£32.61	£250.00	o	o	nco	n/a	n/a
Classic Wood Steering Wheel ^{(v)(vi)}	£217.39	£32.61	£250.00	o	o	o	n/a	n/a
Sandstone Beige Steering Wheel and Gear Knob (Not available with Off Black interior)	-	-	-	nco	nco	nco	n/a	n/a
Eriksberg T-Tec/Textile Upholstery	£260.87	£39.13	£300.00	o	●	nco	n/a	n/a
Leather-faced Upholstery (Standard on SE Premium models)	£1,043.48	£156.52	£1,200.00	o	u (£900)	●	n/a	n/a
6 x CD Player (MP3/WMA Compatible) ^{(vii)(viii)}	£65.22	£9.78	£75.00	o	o	o	o	o
DAB Preparation ^(vii)	£65.22	£9.78	£75.00	o	o	o	o	o
DAB (Digital Audio Broadcasting) Radio (Standard on Premium models) ^(vii)	£217.39	£32.61	£250.00	o	o	o	o	o
High Performance Sound Audio System – 1 x CD radio, 4 x 40 W Amplifier, USB and Aux Input (MP3/WMA Compatible), and 8 Speakers (Standard on Premium models)	£347.83	£52.17	£400.00	o	o	o	o	o
Dynaudio Premium Sound Audio System – with Dolby Pro Logic II Surround Sound ^(ix) , 5 x 130 W Amplifier, USB and Aux Input (MP3/WMA Compatible) and 12 Dynaudio Speakers	£869.57	£130.43	£1,000.00	o	o	o	o	o
Subwoofer (2 x 6.5" Subwoofer with 2 x 130 W Amplifier) ^(vii)	£173.91	£26.09	£200.00	o	o	o	o	o
Rear Seat Audio Console with Headphone Sockets x 2 ^(vii)	£86.96	£13.04	£100.00	o	o	o	o	o
Satellite Navigation System (RTI) with RDS-TMC and Europe DVD Map (Standard on Premium models)	£1,695.65	£254.35	£1,950.00	o	o	o	o	o
Bluetooth® Handsfree System ^(x)	£217.39	£32.61	£250.00	o	o	o	o	o
Dual Band Integrated GSM Telephone with Handset and Volvo On Call ^(xi)	£695.65	£104.35	£800.00	o	o	o	o	o
CZIP (Clean Zone Interior Package) ^(xii)	£108.70	£16.30	£125.00	o	o	o	o	o

	Basic £	VAT £	Rec Retail Price £	S	SE	SE LUX	REDESIGN	REDESIGN SE
WINTER PACK								
Heated Front Seats, Headlamp Cleaning System, Floor Mats and Heated Washer Nozzles	£413.04	£61.96	£475.00	o	o	n/a	u (£400)	u (£400)
Winter Pack with Active Bending Headlamps	£913.04	£136.96	£1,050.00	o	o	●	u (£975)	u (£975)
FAMILY PACK^(xiii)								
Integrated 2-Stage Booster Cushions x 2, Power Child Locks and Passenger Airbag Cut Off Switch	£239.13	£35.87	£275.00	o	o	o	o	o
COMMUNICATIONS PACK								
Satellite Navigation System (RTI) with RDS-TMC and Europe DVD Map, Remote Control, PCC (Personal Car Communicator) with Heartbeat Sensor and Keyless Drive and Bluetooth® Handsfree System ^(x)	£1,826.09	£273.91	£2,100.00	o	o	o	o	o
DRIVER SUPPORT PACK								
BLIS (Blind Spot Information System) with Autofolding Power Door Mirrors with Ground Lights, ACC (Adaptive Cruise Control) with Distance Alert and Collision Warning and Auto Brake, LDW (Lane Departure Warning) with DAC (Driver Alert Control) ⁽ⁱ⁾	£1,565.22	£234.78	£1,800.00	o	u (£1,600)	u (£1,600)	o	u (£1,600)

Accessories from Volvo.

Of course, your Volvo XC60 won't be perfect until it's exactly how you want it. So here's a selection of our range of accessories to completely personalise your new car.



Exterior styling pack

Make your Volvo XC60 even more distinctive with a range of specially designed exterior styling accessories.



19" Achilles
Diamond cut/Silver stone matt



19" Achilles
Diamond cut/Dark grey matt split



19" Erakir
Diamond cut/Dark grey



USB and iPod® Music Interface

Simply connect your iPod® or USB device and seamlessly integrate with your Volvo's audio system.



Towbar-mounted bike rack

This state-of-the-art holder secures your bicycles conveniently and safely on the back of your Volvo.



'Sport time 500' roof box

A practical, lightweight, easy-to-load roof box ideal for skis, luggage, camping gear or golf clubs.



Convertible child seat (9-25 kg)

Advanced design helps provide world-class protection and flexible seating for many years.



Towbars

Our lockable, easy-to-remove towbars are designed specifically for your Volvo. Comes with Trailer Stability Assist (TSA) as standard.



Booster seat (15-36 kg)

Volvo's new booster seat helps position a child at the correct height for the safety belt.



Rear Seat Entertainment (RSE) dual screen

Rear seat passengers can watch a DVD or play a game via two, integrated, 8-inch widescreen displays.



Reversible textile/rubber load compartment mat

With textile on one side and waterproof rubber on the other, this helps you keep the cargo area clean.

Take a look at all our accessories and full pricing information at www.volvocars.co.uk/accessories

COLOUR YOUR VOLVO. When it comes to the appearance of your Volvo, the choice of exterior colour, wheels and other styling items are probably your most important design decisions. For more exterior styling options and to build your new Volvo online, please visit www.volvocars.co.uk



019 Black Stone



426 Silver metallic



452 Black Sapphire metallic⁽⁶⁾



466 Barents Blue pearl



477 Inscription™ Electric Silver coarse flake metallic⁽⁶⁾
(sparkling metallic, shifts from silver to blue effect depending on light)



478 Maple Red pearl



479 Orinoco Blue metallic



481 Cosmic White metallic⁽⁶⁾



490 Chameleon Blue pearl



492 Savile Grey pearl⁽⁶⁾



494 Terra Bronze metallic



495 Lime Grass Green metallic⁽⁶⁾



612 Passion Red⁽⁶⁾



614 Ice White⁽⁶⁾

Clean colours

To reduce usage of environmentally hazardous solvents all Volvo exterior colours are water-based. What's more, our painting facilities are among the cleanest in the world.

Please note: It's not possible to reproduce exact original shades in printed matter. Please ask your dealer to show you samples.

⁽⁶⁾Only available for XC60 R-DESIGN.
⁽⁶⁾Also available for XC60 R-DESIGN.



EXTERIOR STYLING. IT'S PERSONAL. Loaded with style and attitude, the Volvo XC60 has a true crossover character. And to make it even more distinct, we developed a selection of styling accessories. For a strong individual statement, inside and out.

Front bumper bar

This sporty design element, integrated in the front bumper, equips the Volvo XC60 with an even more powerful elegance. Available in an exclusive matt aluminium finish to match other exterior styling extras.

Side scuff plate

The stylish matt aluminium finish side scuff plates add an extra touch of attitude to the Volvo XC60, perfectly matching the design of the sill and other Volvo XC60 exterior styling extras.

Running boards, integrated

As an alternative to the side scuff plate, the running boards are smoothly integrated with the sills to enhance the versatile character of the Volvo XC60. You can stand on these to reach the roof and they also make it easier to step in or out of the vehicle.

Illuminated instep plates

Enter in style. Open the front door, and the Volvo logo embedded in the brushed aluminium footstep lights up together with the interior lighting to provide an illuminated welcome.

Skid plate, rear bumper

Lead the way in style. This matt aluminium finish rear skid plate is available for one or two visible tailpipes.

Sport tailpipe

Available for the 2.4D, this sporty tailpipe in stainless steel adds to the dynamic character of your XC60.

Exterior design Aluminium wheels



18" Merac
Silver Bright




18" Mantus
Silver Stone



17" Segin
Silver Stone



20" or 18" Cratus for R-DESIGN
Silver Bright matt



IMAGINE YOUR NEW INTERIOR. Crafted according to your requirements, the interior of your Volvo can take on any number of personalities. Choose between two interior colours, Anthracite Black and Sandstone Beige, and different upholstery variants. Pick the interior that suits you and add the finishing touch with the interior trim, steering wheel, gear knob and floor mat of your choice. After all, you're probably going to spend a lot of time here.

Ergonomic design Developed in co-operation with ergonomic specialists to provide generous support for the body during hours of driving, the seats in the Volvo XC60 are among the most comfortable in the automotive world. Multiple adjustment possibilities and adjustable lumbar support make it easy to find the perfect driving position.



Leather-faced

This upholstery affords the Volvo XC60 an atmosphere of luxury. It's a hide quality that's smooth and durable, with a fine grain pattern on the centre panels and a more coarse grain pattern on the outer panels. Like all Volvo leather, it's organically tanned and ages beautifully.



Eriksberg T-Tec/textile

This sporty looking upholstery combines two materials: finely woven textile upholstery trimmed with ultra-modern T-Tec, a synthetic skin inspired by wetsuits and durable outdoor gear.



Lomma textile

A finely woven fabric with a contemporary feel and finish. Centre panels are finely patterned while outer panels are plain.

Please note: It's not possible to reproduce exact original shades in printed matter. Please ask your dealer to show you samples.



Floor mats in Off Black



Floor mats in Mocca Brown

Upholstery	Upholstery code	Interior colour	Upholstery colour	Dashboard top & upper door panel	Lower door panel, lower dashboard & tunnel console	Floor mats	Door insert colour
Leather-faced	G100	Antracite Black	Off Black	Off Black/Off Black	Off Black	Off Black	Off Black
	G107	Antracite Black	Off Black/Lemon Green	Off Black/Off Black	Off Black	Off Black	Lemon Green
	G112	Sandstone Beige	Soft Beige	Espresso Brown/Soft Beige	Soft Beige	Mocca Brown	Soft Beige
	G118	Sandstone Beige	Soft Beige/Espresso Brown	Espresso Brown/Soft Beige	Soft Beige	Mocca Brown	Espresso Brown
Eriksberg T-Tec/textile	G800	Antracite Black	Off Black	Off Black/Off Black	Off Black	Off Black	Off Black
	G812	Sandstone Beige	Soft Beige	Espresso Brown/Soft Beige	Soft Beige	Mocca Brown	Soft Beige
Lomma textile	G000	Antracite Black	Off Black	Off Black/Off Black	Off Black	Off Black	Off Black
	G012	Sandstone Beige	Soft Beige	Espresso Brown/Soft Beige	Soft Beige	Mocca Brown	Soft Beige

The roof lining is always in Soft Beige

INTERIOR DESIGN Anthracite Black



Leather steering wheel,
Off Black



Leather steering wheel,
Off Black with Silk metal inlay



Leather/Classic wood steering wheel,
Off Black with Silk metal inlay



Leather gear knob
Off Black, manual



Leather gear knob
Off Black, Geartronic



Leather/Classic wood gear knob
Off Black, Geartronic

INTERIOR DESIGN Sandstone Beige



Leather steering wheel,
Soft Beige



Leather steering wheel,
Soft Beige with Silk metal inlay



Leather/Classic wood steering wheel,
Soft Beige with Silk metal inlay



Leather gear knob
Soft Beige, manual



Leather gear knob
Soft Beige, Geartronic



Leather/Classic wood gear knob
Soft Beige, Geartronic



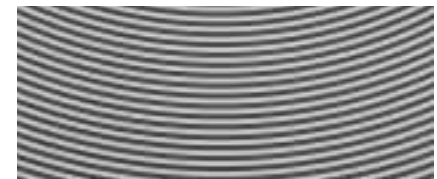
Brushed aluminium trim



Classic wood trim



Nordic Light Oak trim



R-DESIGN trim

INTERIOR DESIGN Leather-faced



Anthracite interior
Leather-faced Off Black, G100



Sandstone Beige interior
Leather-faced Soft Beige, G112



Sandstone Beige interior
Leather-faced Soft Beige/Espresso Brown, G116



Anthracite interior
Leather-faced Off Black/Lemon Green, G107

INTERIOR DESIGN Eriksberg T-Tec/textile



Anthracite interior
Eriksberg T-Tec/textile Off Black, G600



Sandstone Beige interior
Eriksberg T-Tec/textile Soft Beige, G612

INTERIOR DESIGN Lomma textile



Anthracite interior
Lomma textile Off Black, G000



Sandstone Beige interior
Lomma textile Soft Beige, G012

Please note: It's not possible to reproduce exact original shades in printed matter. Please ask your dealer to show you samples.



In fine detail.

The nuts and bolts of your Volvo XC60. Whatever you need to know about your new car – whether that's fuel consumption, CO2 emissions, top speed or boot space – you'll find it here.

ENGINE	T6 AWD Geartronic	2.4D FWD	D5 AWD
Configuration	Transverse – 24 valve	Transverse – 20 valve	Transverse – 20 valve
Cylinders	6	5	5
Engine capacity, cc	2953	2400	2400
Bore x stroke, mm	82 x 93.2	81 x 93.2	81 x 93.2
Max. output ECE, PS/kw/rpm	285/210/5600	175/129/4000	205/151/4000
Max. torque ECE, Nm/rpm	400/1500-4800	420/1500-2750	420/1500-3250
Octane rating	95 RON unleaded ⁽¹⁾	Turbo Diesel	Turbo Diesel
Fuel system	Port fuel injection	Common rail direct injection	Common rail direct injection
Compression ratio	9.3:1	16.5:1	16.5:1

PERFORMANCE	T6 AWD Geartronic	DRIVE	2.4D FWD Geartronic	Manual	D5 AWD Geartronic
Top speed, mph	130	127	127	130	127
Acceleration 0-60 mph, sec	7.1	9.3	9.7	7.9	8.4
0-62 mph (0-100 kmh), sec	7.5	9.8	10.2	8.5	8.9
Drag co-efficient	0.35	0.35		0.35	

FUEL CONSUMPTION ⁽²⁾⁽³⁾	T6 AWD Geartronic	DRIVE	2.4D FWD Geartronic	Manual	D5 AWD Geartronic
(Government Approved) Mpg (l/100 km)					
Urban	16.3 (17.3)	36.2 (7.8)	30.4 (9.3)	30.7 (9.2)	28.0 (10.1)
Extra Urban	33.2 (8.5)	56.5 (5.0)	50.4 (5.6)	50.4 (5.6)	46.3 (6.1)
Combined	24.1 (11.7)	47.1 (6.0)	40.9 (6.9)	40.9 (6.9)	37.7 (7.5)
CO2 g/km	274	159	183	183	199
VED (Vehicle Excise Duty) Band	M	G	I	I	J
Emission Level	Euro V	Euro IV		Euro IV	

NB All diesel models are fitted with a Diesel Particulate Filter

POWER STEERING SYSTEM	All models
(rack & pinion) Turning circle, m (ft)	11.7 (38.4)

LUGGAGE COMPARTMENT	To Glass Line	To Roof
Volume (rear seats up – luggage area) litres (cu.ft)	495 (17.5)	655 (23.1)
Volume (rear seats down) litres (cu.ft)	–	1455 (51.4)

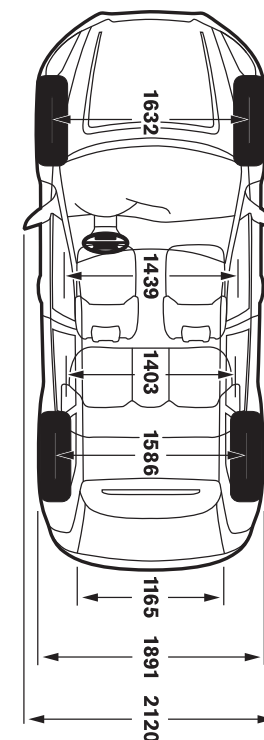
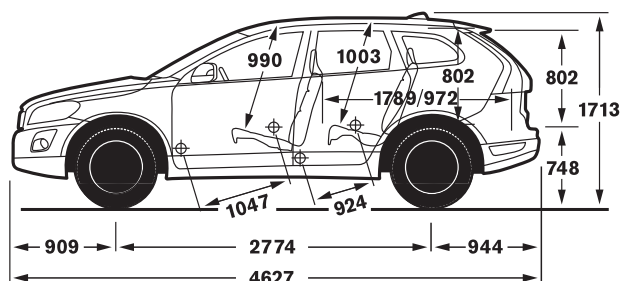
	T6 AWD Geartronic	2.4D FWD	D5 AWD
Brakes			
Disc Diameter Front, mm	328	328	328
Disc Diameter Rear, mm	302	302	302
Transmission			
Manual	–	6 speed	6 speed
Geartronic	6 speed	6 speed	6 speed
Fuel Tank Volume			
litres (gallons)	70 (15.4)	70 (15.4)	70 (15.4)

INSURANCE GROUPS	T6 AWD Geartronic	2.4D FWD	D5 AWD
S	–	13E	15E
SE	15E	13E	15E
SE Lux	15E	13E	15E
R-DESIGN	–	TBD	TBD
R-DESIGN SE	TBD	TBD	TBD

E = Exceeds security requirements for model concerned and group rating has been reduced.

WEIGHTS	T6 AWD Geartronic	2.4D FWD		D5 AWD	
		DRIVE	Geartronic	Manual	Geartronic
Min. kerb weight, kg (actual kerb weight dependent on spec)	1874	1761	1786	1840	1858
Max. possible towing weight braked, kg	2000	1500	2000	1800	2000
Max. towing weight unbraked approx, kg ^(iv)	750	750	750	750	750
Max. towball weight, kg	90	75	90	90	90
Max. total weight, kg	2440	2505	2505	2505	2505
Max. roof load, kg	100	100	100	100	100
Max. payload, kg (dependent on spec)	566	744	719	665	647

GROUND CLEARANCE	
Vehicle Ground Clearance, mm	230
With 2 Persons, mm	220
Wading Depth, mm	350
Approach Angle	22°
Departure Angle	27°
Breakover Angle	22°



- (i) For best performance and lowest fuel consumption 98 RON is recommended, 95 RON can be used for normal driving.
- (ii) The results do not express or imply any guarantee of the fuel consumption of a particular car.
- (iii) Official fuel consumption figures are obtained in accordance with Directive 93/116/EC as amended by 1999/100/EC. The figures are obtained under controlled test conditions and as such consumption achieved on the road will not necessarily accord with the official test results. Factors including driving styles and road, car and weather conditions will also have a bearing on actual fuel consumption achieved.
- (iv) Unbraked towing weight must not exceed 50% of kerb weight up to a maximum of 750 kg.

Notes

The weight of a vehicle will influence the level of CO₂ emitted and, as a result, vehicles with higher levels of specification and factory fit options may emit higher levels of CO₂. However, Vehicle Excise Duty is charged according to the weight and CO₂ emissions of the standard vehicle, as published in this price list. The weight effect of any additional items does not affect the amount of Vehicle Excise Duty payable. A weighbridge must be used to determine specific weights. Data valid for manual transmission unless specified. All measurements in mm. The max. output figures are quoted in PS (Pferdestärke), which is the metric equivalent of brake horsepower. NB Some of the information in this price list may not be correct due to product changes which may have occurred since it was printed. Some of the equipment described or shown may now be available only at extra cost. Before ordering, please ask your Volvo dealer for the latest information. The manufacturer reserves the right to make changes at any time, without notice, to prices, colour, materials, specifications and models. Volvo Car UK Limited, Globe Park, Marlow, Buckinghamshire, SL7 1YQ

Meet the family.

Fuel consumption and CO₂ emissions for the Volvo range:

Fuel consumption mpg (l/100 km):
Urban: 57.7 (4.9) – 14.1 (20.0).
Extra Urban: 83.1 (3.4) – 28.8 (9.8).
Combined: 74.3 (3.8) – 20.9 (13.5).
CO₂ emissions: 99 – 322 g/km.

Please note: Some of the information in this brochure may be incorrect due to changes in product specification that may have occurred since printing. Some of the equipment described or shown may now only be available at extra cost. Before ordering, please ask your Volvo dealer for the latest information. The manufacturer reserves the right to make changes at any time and without notice, to prices, colours, materials, specifications and models.

Furthermore: There are options, accessories and packages that can be chosen separately or combined as you like. For more information, please contact your Volvo dealer.

S



Volvo S40 The compact and energetic saloon.



Volvo S80 The premier saloon, meticulously engineered for superior driving comfort.

V



Volvo V50 The Sportswagon — flexible, compact and full of zest.



Volvo V70 The genuine family estate — highly competitive yet comfortably versatile.

XC



Volvo XC60 A sporty coupe and a capable all-roader fused into a Swedish crossover experience.



Volvo XC70 The rugged yet stylish all-roader.



Volvo XC90 The versatile SUV that takes you anywhere with grace.

C



The new Volvo C30 The compact and charismatic SportsCoupe.



The new Volvo C70 A retractable hardtop convertible that seats four adults with comfort.



The end is just the beginning.

VOLVO TOTAL CARE

We want your experience of buying and owning a Volvo to be one of life's pleasures, that's why we're here to make it as care-free and easy as possible. It's simple – Volvo Total Care is a single port of call for all your motoring requirements, from funding your purchase to protecting your investment with Volvo Car Insurance to monthly payment plans for servicing. We will even provide you with special offers during your ownership. Volvo Total Care is designed to make owning a Volvo rewarding. For further information on Volvo Total Care please contact your dealer or go to www.volvocars.co.uk/totalcare

FINANCE

As part of Volvo, Volvo Car Finance has developed a series of funding plans that will provide you with maximum choice and flexibility when acquiring a Volvo[®]. For details of the current promotions available, please visit www.volvocars.co.uk/financepromotions

WHAT NEXT? If you'd like to find out more about the range of products and services that make up Care by Volvo, the story continues at www.volvocars.co.uk. Alternatively you can contact your nearest Volvo dealer or request relevant brochures.

- (i) Finance subject to status. Guarantees/indemnities may be required. Volvo Car Finance SL7 1YQ.
- (ii) When using a Volvo approved Body and Paint repairer.
- (iii) Volvo Car Insurance is underwritten by Royal & Sun Alliance Insurance plc (No. 93792). Registered in England and Wales at St Mark's Court, Chart Way, Horsham, West Sussex RH12 1XL. Authorised and regulated by the Financial Services Authority. For your protection telephone calls will be recorded and may be monitored. All benefits are subject to qualifying status, terms and conditions, cover level and underwriting criteria. Service and repair benefits are subject to being carried out by a recommended repairer.

INSURANCE

Volvo Car Insurance is designed for Volvo drivers and because we know Volvos inside out, we can offer exactly the right tools and expertise, fitting only genuine Volvo parts by trained Volvo technicians[®]. Your Volvo will come with seven days drive away insurance, so you've already got peace of mind. Because Volvo drivers have an excellent reputation, we can also offer extensive cover at a reasonable price[®].

Call now for your insurance quote on **0800 238 239**, quoting reference BROCH.

SERVICING YOUR VOLVO

Your Volvo dealer has the unique know-how to tailor a service programme according to Volvo's strict recommendations and guarantees you years of safety and driving pleasure. In addition, why not save yourself money on service costs by taking out a Volvo Service Plan? They're designed to spread servicing costs on an interest-free monthly basis, providing you with economic, convenient servicing and peace of mind.

Whatever option you choose your costs are fixed no matter what happens to labour, parts or oil prices. You will also have the satisfaction of being able to have your Volvo serviced at any one of our UK Volvo dealers and Service Centres. For further information and to purchase online please go to www.volvocars.co.uk/serviceplan

VOLVO ON CALL

Subscribe to Volvo On Call and you'll never be completely on your own. It's a GPS-based communication system providing 24-hour access to both emergency and roadside assistance wherever you are. See the Volvo On Call brochure for more information.

LOOKING AHEAD

You'll probably never find out just how good some of these services are. But should the unexpected happen, we'd like to think that you'd be even happier you chose a Volvo.

ROADSIDE ASSISTANCE

Every new car comes with one year's Volvo Assistance cover. You'll enjoy free breakdown and recovery assistance, anywhere in Europe, 24 hours a day. You can even extend cover for £85 for one year or £155 for two years. Call Volvo Assistance on **08701 650 978**.

WARRANTY

Every new Volvo comes with comprehensive protection. Our warranty covers the first three years or 60,000 miles, whichever comes first. There's a three year unlimited mileage warranty on the paintwork, and either eight or twelve years against rust perforation. If a component fails due to a defect or material fault, your dealer will swiftly rectify the problem, free of charge.

THERE'S MORE TO LIFE THAN A VOLVO.

Volvo. for life



THAT'S WHY YOU DRIVE ONE.

VOLVO

Volvo Car UK Limited
www.volvocars.co.uk

All "On The Road" prices quoted in this price list include Volvo standard national delivery charge, inclusive of number plates and VAT at £520 and the VED (Vehicle Excise Duty) car tax as of 1st May 2009. This charge does not include any provision for fuel. The "On The Road" price also includes a £55 vehicle first registration fee (as set by the government - excludes Channel Islands and Isle of Man). Recommended retail prices quoted do not include these additions.

MODEL YEAR 2010 EDITION 4
Issued 05/10/2009