

VOLVO XC90



The XC90 range at a glance.

XC90 Active

The Active model comes with all the features you'd expect from a Volvo. Beyond the 17" Neptune alloy wheels and RSC (Roll Stability Control) system, the Active offers dual-zone climate control, Rear Park Assist and power door mirrors and windows, dark tinted rear windows and Active Bending headlamps. Interior details include a leather steering wheel and gear knob, and our High Performance audio system with USB and Aux Input, 8 speakers and CD player together with aluminium trim.

XC90 SE

The SE takes you and your passengers further along the path of self-indulgence with leather-faced upholstery and a power adjustable driver's seat. There are various intuitive features, such as the automatic rain sensor and autodimming rear-view mirror with compass. On the outside, 18" Camulus alloy wheels make sure you don't go unnoticed.

XC90 SE LUX

The SE Lux includes the ultimate motoring equipment. Above and beyond SE specification, the SE Lux has Chronograph instrument dials, Soft Leather upholstery, Sanded Silver Aluminium trim and both front seats are powered and heated. Further comforts include luxury floor mats and autofolding power door mirrors with ground lights. Exterior details include 18" Situla alloy wheels, brushed aluminium roof rails and Active Bending headlamps with power washers.

XC90 EXECUTIVE

The Executive is the ultimate in Volvo luxury. Its refined exterior boasts stylish Matt Chrome door mirrors; Active Bending headlamps and 19" Galateia alloy wheels are further highlights. Inside the cabin, inlays of walnut provide a warm welcome, while Executive Ventilated Soft Leather upholstery with massage function, extra padding and armrests pamper. Further features include RTI navigation system and our Dynaudio Premium Sound audio with Dolby Pro Logic II Surround Sound⁽ⁱ⁾.

XC90 **R-DESIGN** SE

The R-DESIGN model combines the luxury features of the SE, with sports styling and handling enhancements. Speed dependent power steering with unique 19" Vulcanis alloy wheels and R-DESIGN chassis enhance the handling. Visual presence is further enhanced with silver matt door mirrors, unique quad tail pipes, together with R-DESIGN leather-faced upholstery, front sports seats with side support, R-DESIGN leather steering wheel and unique aluminium interior trim.

PREMIUM

The Premium model is the ultimate upgrade. The combination of Satellite Navigation System (RTI) and Dual Band Integrated GSM Telephone and Volvo On Call is designed to complement the existing high level of specification whichever model you choose.

(i) Dolby and Pro Logic Surround Sound™ are trademarks of Dolby Laboratories Licensing Corporation.



On the road.

How much will it cost to get behind the wheel of your own Volvo XC90? Simply decide which model variant and engine type are right for you and then take a look at the full price list below.

XC90 ACTIVE

	Basic £	VAT £	Rec Retail Price £	On the Road Price £
DIESEL				
D5 AWD (185 PS) Active	£25,693.62	£4,496.38	£30,190.00	£30,995.00
D5 AWD (185 PS) Active Premium [Ⓞ]	£27,395.74	£4,794.26	£32,190.00	£32,995.00

XC90 SE

	Basic £	VAT £	Rec Retail Price £	On the Road Price £
DIESEL				
D5 AWD (185 PS) SE	£29,097.87	£5,092.13	£34,190.00	£34,995.00
D5 AWD (185 PS) SE Premium [Ⓞ]	£30,800.00	£5,390.00	£36,190.00	£36,995.00





XC90 SE LUX

	Basic £	VAT £	Rec Retail Price £	On the Road Price £
PETROL				
3.2 AWD (238 PS) SE Lux Geartronic	£31,872.34	£5,577.66	£37,450.00	£38,445.00
3.2 AWD (238 PS) SE Lux Geartronic Premium [®]	£33,574.47	£5,875.53	£39,450.00	£40,445.00
DIESEL				
D5 AWD (185 PS) SE Lux	£30,970.21	£5,419.79	£36,390.00	£37,195.00
D5 AWD (185 PS) SE Lux Premium [®]	£32,672.34	£5,717.66	£38,390.00	£39,195.00

XC90 EXECUTIVE

	Basic £	VAT £	Rec Retail Price £	On the Road Price £
PETROL				
3.2 AWD (238 PS) Executive Geartronic	£35,106.38	£6,143.62	£41,250.00	£42,245.00
V8 AWD (315 PS) Executive Geartronic	£41,702.13	£7,297.87	£49,000.00	£49,995.00
DIESEL				
D5 AWD (185 PS) Executive Geartronic	£35,438.30	£6,201.70	£41,640.00	£42,445.00

XC90 R-DESIGN SE

	Basic £	VAT £	Rec Retail Price £	On the Road Price £
PETROL				
3.2 AWD (238 PS) R-DESIGN SE Geartronic	£31,489.36	£5,510.64	£37,000.00	£37,995.00
3.2 AWD (238 PS) R-DESIGN SE Geartronic Premium [®]	£33,191.49	£5,808.51	£39,000.00	£39,995.00
V8 AWD (315 PS) R-DESIGN SE Geartronic	£38,297.87	£6,702.13	£45,000.00	£45,995.00
V8 AWD (315 PS) R-DESIGN SE Geartronic Premium [®]	£40,000.00	£7,000.00	£47,000.00	£47,995.00
DIESEL				
D5 AWD (185 PS) R-DESIGN SE	£30,587.23	£5,352.77	£35,940.00	£36,745.00
D5 AWD (185 PS) R-DESIGN SE Premium [®]	£32,289.36	£5,650.64	£37,940.00	£38,745.00










The right equipment.

It's essential that your Volvo comes equipped with everything you need. Below you'll find the standard equipment lists for each model variant, plus optional equipment to personalise your Volvo XC90. And as you'd expect, there is an array of industry-leading, cutting edge safety innovations.

STANDARD EQUIPMENT – SAFETY & SECURITY	ACTIVE	SE	SE LUX	EXECUTIVE	R-DESIGN SE
Dual Stage Driver and Passenger Airbags	•	•	•	•	•
SIPS (Side Impact Protection System)	•	•	•	•	•
SIPS Airbags	•	•	•	•	•
IC (Inflatable Curtain)	•	•	•	•	•
RSC (Roll Stability Control)	•	•	•	•	•
WHIPS (Whiplash Protection System) (Front Seats)	•	•	•	•	•
ABS (Anti-lock Brake System) with EBD (Electronic Brake Distribution)	•	•	•	•	•
DSTC (Dynamic Stability and Traction Control) with Electronic Brake Assistance	•	•	•	•	•
7 Three Point Seat Belts	•	•	•	•	•
Seat Belt Pre-tensioners (All Seats)	•	•	•	•	•
Head Restraints – All 7 Seats	•	•	•	•	•
ISOFIX Child Seat Preparation (2nd Row)	•	•	•	•	•
Integrated Booster Cushion (2nd Row)	•	•	•	•	•
Anti-theft Alarm including Immobiliser with LED (Key Transponder) and Level Sensor	•	•	•	•	•
Key Integrated Remote Control Central Locking including Fuel Flap with Deadlocking System	•	•	•	•	•
Mass Movement Sensor	•	•	•	•	•
Water Repellent Front Side Windows	•	•	•	•	•
Load Cover (Cargo Area) and Load Protection Net	•	•	•	•	•
Day Running Lights	•	•	•	•	•
Headlamp Levelling System	•	•	•	•	•
High Level LED Brake Light	•	•	•	•	•
Home Safe and Approach Lighting	•	•	•	•	•
Dark Tinted Rear Windows (Rear Windows and Rear Screen)	•	•	•	•	•

STANDARD EQUIPMENT – EXTERIOR	ACTIVE	SE	SE LUX	EXECUTIVE	R-DESIGN SE
Metallic Paint				•	
17" Neptune Alloy Wheels (Silver Bright) – 235/65 R17 Tyres	•				
18" Camulus Alloy Wheels (Silver Bright) – 235/60 R18 Tyres		•			
18" Situla Alloy Wheels (Silver Bright) – 235/60 R18 Tyres			•		
19" Galateia Alloy Wheels (Diamond Cut Light Titanium) – 255/50 R19 Tyres				•	
19" Vulcanis 5-Spoke Alloy Wheels (Silver Bright) – 255/50 R19 Tyres					•
Locking Wheel Nuts	•	•	•	•	•
Tyre Sealant Kit and 12V Compressor	•	•	•	•	•
Active Bending Headlamps with Headlamp Cleaning System	•	•	•	•	•
Power Folding Door Mirrors with Ground Lights		•	•	•	•
Front Fog Lights	•	•	•	•	•
Power Adjustable and Heated Door Mirrors	•	•	•	•	•
Rain Sensor – Automatic Windscreen Wiper Activation		•	•	•	•
Roof Rails Brushed Aluminium	•	•	•	•	•
Towbar Preparation	•	•	•	•	•
Colour Co-ordinated Door Mirrors (Matt Chrome – Executive)			•	•	
R-DESIGN Silver Matt Door Mirrors					•
Colour Co-ordinated Wheel Arches	•	•	•	•	•
Extended Colour Co-ordinated Wheel Arches					•
Front and Rear Skidplate (Unique Rear Skidplate – R-DESIGN)	•	•	•	•	•
Colour Co-ordinated Door Handles and Rubbing Strips	•	•	•	•	•
Unique Executive Grille				•	
Chrome Surround for Air Intake (V8 AWD Only)				•	
R-DESIGN Grille with Logo					•
Silver Matt Exterior Trim (Window Frame Surround, Tailgate Trim and Side Scuff Plates)					•
Silver Extended Front Skidplate and Unique Rear Skidplate					•
Rear Park Assist	•	•	•	•	•
Exterior Executive Badge				•	
Chromed Stainless Steel Sports Quad Tail Pipes					•
Chromed C Pillar			•	•	
Dynamic Chassis	•	•	•	•	
R-DESIGN Lowered Sports Chassis					•
Load Compensating Suspension	•	•	•	•	•
Electronic All Wheel Drive System with Instant Traction™ (Haldex Coupling)	•	•	•	•	•

STANDARD EQUIPMENT - INTERIOR	ACTIVE	SE	SE LUX	EXECUTIVE	
ECC (Electronic Climate Control) with AQS (Air Quality System) and Pollen Filter	•	•	•	•	•
B Pillar Ventilation	•	•	•	•	•
Information Centre	•	•	•	•	•
Cruise Control	•	•	•	•	•
Geartronic Transmission (6 speed) (3.2 AWD and V8 AWD Only)			•	•	•
Speed Dependent Steering System (V8 AWD and Executive models Only)				•	
Speed Dependent Sports Steering System					•
Front and Rear Power Windows	•	•	•	•	•
Illuminated Driver and Passenger Vanity Mirrors	•	•	•	•	•
Front and Rear Reading Lights	•	•	•	•	•
Autodimming Rear View Mirror	•				
Autodimming Rear View Mirror with Compass		•	•	•	•
Front Centre Armrest ⁽ⁱⁱⁱ⁾	•	•	•	•	•
Cupholders in Tunnel Console – Front and Rear	•	•	•	•	•
Grocery Bag Holder		•	•	•	•
12V Socket (Rear Tunnel Console/Luggage Area)	•	•	•	•	•
Power Driver's Seat with Memory and Door Mirror Memory		•			•
Power Driver and Passenger Seats with Driver's Memory and Door Mirror Memory			•	•	
Height Adjustable Driver and Passenger Seats	•	•	•	•	•
Forward Folding Front Passenger Seat	•	•	•	•	•
2 Individual Folding 3rd Row Seats	•	•	•	•	•
3 Individual Folding 2nd Row Seats	•	•	•	•	•
Heated Front Seats			•	•	
Leather Steering Wheel	•	•	•	•	
Leather Gear Knob	•	•	•		
 Leather Sports Steering Wheel with Logo					•
 Sports Gear Knob					•
Steering Wheel Remote Audio Controls	•	•	•	•	•
Chronograph Instrument Dials			•	•	
 Unique Instrument Dials					•
Height and Reach Adjustable Steering Column	•	•	•	•	•
Illuminated Ignition Lock	•	•	•	•	•
Cross Brushed Aluminium Trim	•	•			
Sanded Silver Aluminium Trim			•		
Walnut Wood Trim in Panels, Centre Console and Gear Lever Knob				•	
 Rubber/Aluminium Trim					•
Marstrand Textile/Vinyl Upholstery	•				
Leather-faced Upholstery		•			
Soft Leather Upholstery			•		
Executive Ventilated Soft Leather Upholstery with Massage Function and Door Inserts with Contrast Piping (All 3 Rows)				•	
 Leather-faced Sports Upholstery with Logo					•
Executive Soft Leather Extra Padded Front Door Armrests				•	
Luxury Floor Mats			•		
Executive Nubuck Trimmed Floor Mats				•	
 Sports Floor Mats					•
High Performance Audio System – 1 x CD/Radio, 4 x 40W Amplifier, USB and Aux Input (MP3/WMA Compatible) Amplifier and 8 Speakers	•	•	•		•
Dynaudio Premium Sound Audio System – 1 x CD/Radio with Dolby Pro Logic II ⁽ⁱ⁾ Digital Surround Sound, 5 x 130W Amplifier, USB and Aux Input (MP3/WMA Compatible) and 12 Speakers				•	
Rear Seat Audio Console with Headphone Sockets x 4				•	
Satellite Navigation System (RTI) with RDS-TMC, Remote Control and Map Data on Hard Disk (Standard on Premium models only)	•	•	•	•	•
Volvo On Call ⁽ⁱⁱ⁾ (Standard on Premium models only)	•	•	•	•	•
Dual Band Integrated GSM Telephone (Standard on Premium models only)	•	•	•	•	•

(i) Dolby and Pro Logic Surround Sound™ are trademarks of Dolby Laboratories Licensing Corporation.

(ii) Volvo On Call includes Safety Package (Security Package available at extra cost).

(iii) Front Centre Armrest cannot be removed on XC90 Executive.



OPTIONAL EQUIPMENT – SAFETY & SECURITY	Basic £	VAT £	Rec Retail Price £	ACTIVE	SE	SE LUX	EXECUTIVE	R-DESIGN SE
BLIS (Blind Spot Information System) with Power Folding Door Mirrors	£553.19	£96.81	£650.00	o	u (£450)	u (£450)	u (£450)	u (£450)
Passenger Airbag Cut Off Switch	£25.53	£4.47	£30.00	o	o	o	o	o
Dark Tinted Rear Windows (Rear Windows and Rear Screen) ⁽ⁱ⁾	£306.38	£53.62	£360.00	•	o	o	o	o
Laminated Water Repellent Side Windows ⁽ⁱ⁾	£263.83	£46.17	£310.00	n/a	o	o	o	o
IR (Infrared) Reflective Glass Windscreen and Front Windows	£221.28	£38.72	£260.00	n/a	o	o	o	o
Power Child Locks (Rear Doors)	£68.09	£11.91	£80.00	o	o	o	o	o

OPTIONAL EQUIPMENT – EXTERIOR	Basic £	VAT £	Rec Retail Price £	ACTIVE	SE	SE LUX	EXECUTIVE	R-DESIGN SE
Black Paint (Solid)	£225.53	£39.47	£265.00	o	o	o	n/a	n/a
Metallic/Pearlescent Paint	£531.91	£93.09	£625.00	o	o	o	•	o
Inscription™ Paint	£719.15	£125.85	£845.00	o	o	o	u (£220)	o
17" Neptune Alloy Wheels (Silver Bright) – 235/65 R17 V Tyres	-	-	-	•	nco	nco	n/a	n/a
18" Situla Alloy Wheels (Silver Bright) – 235/60 R18 Tyres	£659.57	£115.43	£775.00	o	nco	•	n/a	n/a
18" Camulus Alloy Wheels (Silver Bright) – 235/60 R18 V Tyres	-	-	-	n/a	•	nco	n/a	n/a
19" Vulcanis 5-Spoke Diamond Cut Alloy Wheels (Light Titanium) – 255/50 R19 Tyres	-	-	-	n/a	n/a	n/a	n/a	nco
20" Cratus Alloy Wheels (Silver Bright) – 255/45 R20 Tyres	£531.91	£93.09	£625.00	n/a	n/a	n/a	n/a	o
Tempa Spare Wheel and Jack Kit ^(xi)	-	-	-	nco	nco	nco	nco	n/a
Brushed Aluminium Roof Rails	-	-	-	•	•	•	•	nco

• = Standard, o = option, n/a = not available, nco = no cost option, i.e. a customer can upgrade to that option without paying any extra money, u = upgrade, i.e. a customer can upgrade to that option but will pay the difference in price, upgrade price shown in (£).

- (i) Laminated Water Repellent Side Windows and Dark Tinted Rear Windows cannot be combined.
- (ii) Electric Glass Tilt and Slide Sunroof cannot be combined with Tempa Spare Wheel on D5 Executive Geartronic.
- (iii) Cannot be ordered on D5 Manual.
- (iv) Front Centre Armrest cannot be removed on XC90 Executive.
- (v) If 6 x CD Player is ordered, standard USB port is removed from the audio system.
- (vi) Dolby and Pro Logic II Surround Sound™ are trademarks of Dolby Laboratories Licensing Corporation.
- (vii) If Dynaudio Premium Sound Audio is ordered with RTI Navigation System or Communications Pack, system includes 11 speakers.
- (viii) Must be ordered in conjunction with Rear Seat Entertainment.
- (ix) Volvo On Call includes Safety package (Security package available at additional cost).
- (x) Must be ordered in conjunction with RTI Navigation System.
- (xi) Not available to order on R-DESIGN models.
- (xii) Not available to order with D5 Manual models.
- (xiii) Must be ordered in conjunction with Dark Wood Trim.



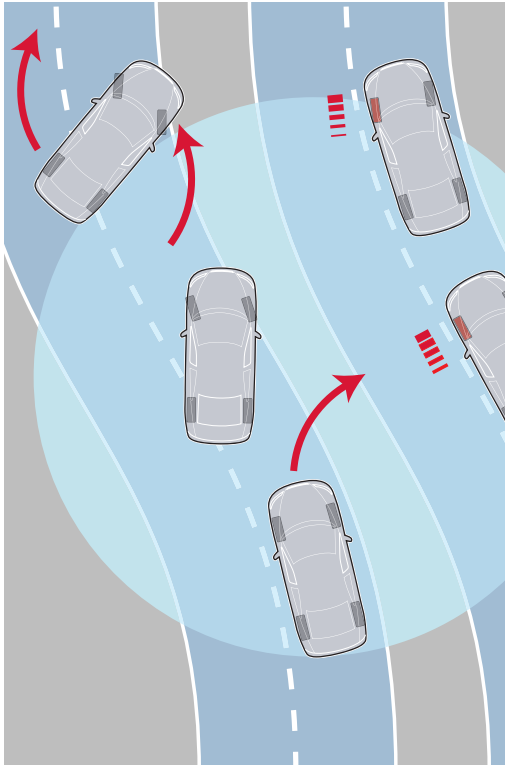


OPTIONAL EQUIPMENT - INTERIOR	Basic £	VAT £	Rec Retail Price £	ACTIVE	SE	SE LUX	EXECUTIVE	REDESIGN SE
Geartronic Transmission (Standard 3.2 AWD and V8 AWD)	£1,234.04	£215.96	£1,450.00	o	o	o	●	o
Speed Dependent Steering System (Standard V8 AWD)	£195.74	£34.26	£230.00	n/a	o	o	●	n/a
Air Conditioning for 3rd Row of Seats ⁽ⁱⁱⁱ⁾	£327.66	£57.34	£385.00	n/a	o	o	o	o
Power Glass Tilt and Slide Sunroof ⁽ⁱⁱ⁾	£723.40	£126.60	£850.00	o	o	o	o	o
Front and Rear Ashtray with Cigarette Lighter	-	-	-	nco	nco	nco	nco	nco
Power Driver's Seat with Memory and Door Mirror Memory	£523.40	£91.60	£615.00	o	●	n/a	n/a	●
Power Driver and Passenger Seats with Driver's Memory and Door Mirror Memory	£523.40	£91.60	£615.00	n/a	o	●	●	o
Cross Brushed Aluminium Trim	-	-	-	●	●	n/a	nco	n/a
Dark Wood Trim	-	-	-	n/a	nco	nco	n/a	n/a
Dark Wood Steering Wheel ^(xiii)	£221.28	£38.72	£260.00	n/a	o	o	o	n/a
6 x CD Player ^(v)	£68.09	£11.91	£80.00	o	o	o	o	o
Dynaudio Premium Sound Audio System – 1 x CD/Radio with Dolby Pro Logic II ^(vi) Digital Surround Sound, 5 x 130W Amplifier, USB and Aux Input (MP3/WMA Compatible) and 12 Speakers ^(vii)	£851.06	£148.94	£1,000.00	n/a	o	o	●	o
Rear Seat Entertainment System with 1 x DVD player in Front Centre Armrest, 2 x 8" Screens, 2 x IR Headphones, Remote Control and Dark Tinted Rear Windows (Rear Windows and Rear Screen)	£1,200.00	£210.00	£1,410.00	n/a	o	o	o	o
Rear Seat Audio Console with Headphone Sockets x 4	£85.11	£14.89	£100.00	n/a	o	o	●	o
Digital TV ^(viii)	£361.70	£63.30	£425.00	n/a	o	o	o	o
Satellite Navigation System (RTI) with RDS-TMC, Remote Control and Map Data on Hard Disk ^(viii) (Standard on Premium models)	£1,659.57	£290.43	£1,950.00	o	o	o	●	o
Dual Band Integrated GSM Telephone and Volvo On Call ^{(ix)(x)} (Standard on Premium models)	£702.13	£122.87	£825.00	o	o	o	●	o
Dual Band Integrated GSM Telephone	£425.53	£74.47	£500.00	o	o	o	n/a	o
Refrigerator in Front Centre Armrest ^(iv)	£480.85	£84.15	£565.00	n/a	n/a	n/a	o	n/a

	Basic £	VAT £	Rec Retail Price £	ACTIVE	SE	SE LUX	EXECUTIVE	REDESIGN SE
WINTER PACK								
Heated Front Seats, Headlamp Cleaning System and Luxury Floor Mats	£382.98	£67.02	£450.00	n/a	o	n/a	n/a	u (£300)
Winter Pack with Active Bending Headlamps	£851.06	£148.94	£1,000.00	u (£350)	o	n/a	n/a	n/a
COMMUNICATIONS PACK^(vii) (Standard on Premium models)								
Dual Band Integrated GSM Telephone with Handset and Volvo On Call ^(ix) , Satellite Navigation System (RTI) with RDS-TMC and Map Data on Hard Disk	£2,255.32	£394.68	£2,650.00	o	o	o	●	o
FAMILY PACK^(xii)								
Power Child Locks Rear Doors, Dark Tinted Rear Windows, Rear Headphone Sockets and 3rd Row Air Conditioning	£595.74	£104.26	£700.00	u (£400)	o	o	u (£600)	o

Inside information.

Here you can learn more about the features and technology of your Volvo XC90. Some are standard, some are optional. For more detailed information, please contact your Volvo dealer or visit www.volvocars.co.uk



Dynamic Stability and Traction Control (DSTC)

By helping prevent fishtails, spinouts, and rollovers, stability control technology like DSTC has been described as one of the most vital safety advances of the past decade. At the core of DSTC, a gyroscope senses the car's direction and compares this with steering wheel movements as well as the actual rotation of the car's wheels. DSTC is able to detect a potential skid and help counteract this by reducing the engine's power output, or braking on one or more wheels.



Whiplash Protection System (WHIPS)

Integrated in the front seats, Volvo's WHIPS cradles the occupant to help reduce the risk of whiplash injury (one of the most common types of traffic injury and often the result of low-speed rear impact collision). The function is activated by a collision of sufficient force from behind. Independent research has shown that WHIPS is one of the most effective systems in the world and can reduce the risk of long-term injuries by 50%.



Active Bending Headlamps

Compared to conventional halogen headlamps, Active Bending headlights with Dual Xenon technology expand your vision range by about 230%. This means you'll be helped to gain 45 metres more for braking. And using motorised lamps that turn up to 15° in either direction, this technology gives a 90% boost to your vision round bends at night. You can enjoy highly effective low beam illumination on narrow, winding roads and extremely powerful full beams on the motorway. A daylight sensor disengages the adaptive function during daytime to extend its lifespan. Independent of the load, these headlights self-adjust to maintain the correct angle to the road – even during hard acceleration or braking.

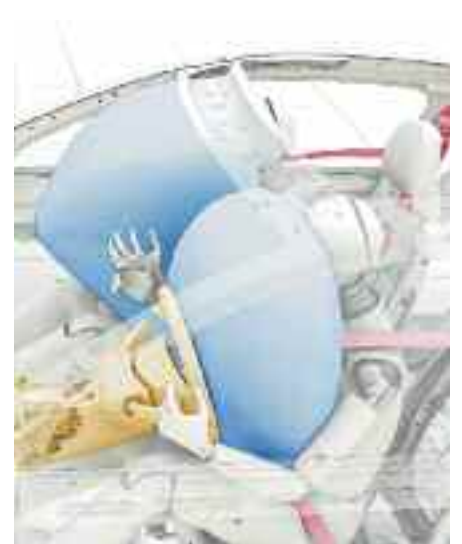


Inflatable Curtain (IC)

In a collision or roll-over, the Inflatable Curtain (IC) helps protect the heads of both front and rear outboard occupants. It also stays inflated for some seconds to provide prolonged protection in multiple accidents. And to help protect children in the rear seat, IC interacts with the two-stage integrated booster cushions and the belt load limiters.

Side Impact Protection System (SIPS)

SIPS is a Volvo unique safety system that has been developed to help protect where occupants are most exposed to the crash forces. The steel framework of the car – including the front seats – is designed and reinforced to help displace the impact of a side-collision away from the occupants to other parts of the car body and help prevent intrusion into the cabin. The extremely strong side structure contains ultra-high strength steel and softer grades of steel to help withstand a severe side impact – even with a larger vehicle. The Inflatable Curtain (IC) for all the outboard occupants and the front seat side airbags interact with the SIPS to help provide further protection.



Dual-stage airbags, driver and front passenger

Helping to optimise protection, the dual-stage airbags adapt the level of inflation depending on the force of the collision. The driver's airbag also interacts with the deformation of the collapsible steering column.



Refrigerator

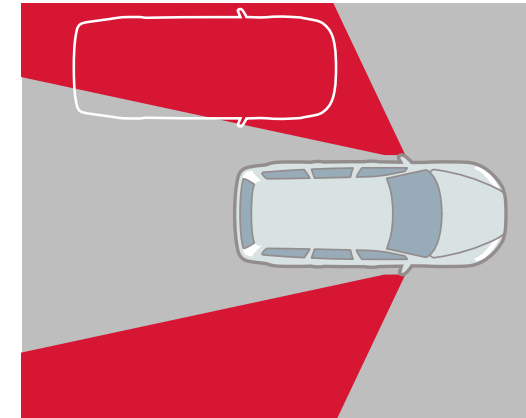
For the simple pleasures, you can add a refrigerator between the front seats. Refreshments are kept cold and within convenient reach. Passengers will also have hand-cut Swedish crystal by Kosta Boda, designed by the Swedish glass artist Bertil Vallien, and engraved with the Executive emblem. This is available as an option on Executive Models.



Rear Seat Entertainment (RSE) dual screen

With Volvo's RSE dual screen, the rear seat passengers can watch a DVD film or play a game – together or separately. Two 8-inch widescreen displays are integrated in the front seat head restraints. Cordless headphones let you listen to the music or programme of your choice. Sound is also provided through the vehicle's rear loudspeakers or – using the rear headphone connectors – any wired headphones. Integrated behind the front centre armrest, the DVD player and AUX socket for extra devices (such as game consoles, an iPod®, MP3 player, extra DVD player or a digital camera) are easy to reach from the rear seat.

iPod is a trademark of Apple Computer Inc.



Blind Spot Information System (BLIS)

BLIS uses rear-facing cameras installed in the door mirrors to keep a lookout on either side of the car. As a vehicle enters your blind spot, this function can alert you with a lamp built into the front door post, left or right. Together with the door mirrors, this helps you assess the feasibility of a lane change. BLIS is activated once the car exceeds 6 mph, and reacts to almost any type of vehicle from a motorcycle upwards, day or night.

Autofolding Power Door Mirror with Ground Lights

At the touch of a button, these door mirrors can be folded flat against the car where they are less likely to get damaged after you've parked. They also fold or unfold automatically every time you lock or unlock the car. The integrated ground lighting is activated with the remote control. Beyond enhancing security to and from your car at night, this is also convenient when getting in and out.



Road Traffic Information (RTI)

Volvo's GPS-based RTI navigation system is totally integrated with your car. It offers both voice guidance and graphic navigation all the way to your destination. Via TMC (Traffic Message Channel) radio data broadcasts RTI also lets you know if there's weather-related trouble on route and recommends an alternative. The RTI system is easily controlled from the steering wheel or a remote, and the screen is positioned so you can keep your attention on traffic. When not in use, the screen retracts into the dash. The maps are on one DVD and cover major parts of Europe. To help you keep track of new roads and points of interest, you can join our MapCare programme for two free map updates.



Accessories from Volvo.

Of course, your Volvo XC90 won't be perfect until it's exactly how you want it. So here's a selection of our range of accessories to completely personalise your new car.



Exterior styling pack

Make your Volvo XC90 even more distinctive with a range of specially designed exterior styling accessories.

Polestar Performance upgrade
A power optimisation software which was developed jointly between Polestar Performance – Volvo's racing partner – and Volvo Car Corporation's powertrain department. The upgrade will increase your car's power from 185 hp to 205 hp and torque from 400 Nm to 450 Nm.



Towbar-mounted bike rack

This state-of-the-art holder secures your bicycles conveniently and safely on the back of your Volvo.



'Sport time 500' roof box

A practical, lightweight, easy-to-load roof box ideal for skis, luggage, camping gear or golf clubs.



19" Alastor
Silver Bright



20" Cratus
Silver Bright



18" Nereus
Silver Bright



18" Notos
Diamond Cut/Silver Stone or
Diamond Cut/Light Grey



17" Antaeus
Silver Bright



Convertible child seat (9-25kg)

Advanced design helps provide world-class protection and flexible seating for many years.



Towbars

Our lockable, easy-to-remove towbars are designed specifically for your Volvo.



Booster seat (15-36kg)

Volvo's new booster seat helps position a child at the correct height for the safety belt.



Rear Seat Entertainment (RSE) dual screen

Rear seat passengers can watch a DVD or play a game via two, integrated, 8-inch widescreen displays.



Reversible textile/rubber load compartment mat

With textile on one side and waterproof rubber on the other, this helps you keep the cargo area clean.

Take a look at all our accessories and full pricing information at www.volvocars.co.uk/accessories

COLOUR YOUR VOLVO. When it comes to the appearance of your Volvo, the choice of exterior colour, wheels and other styling items are probably your most important design decisions. And to add a truly exquisite touch to the paintwork of your Volvo, choose one of the unique Inscription colours. For more exterior styling options and to build your new Volvo online, please visit www.volvocars.co.uk



019 Black Stone



426 Silver metallic



452 Black Sapphire metallic ^{(i) (ii)}



453 Inscription™ White pearl ⁽ⁱⁱⁱ⁾



467 Magic Blue pearl ^{(i) (ii)}



472 Oyster Grey pearl ⁽ⁱ⁾



477 Inscription™ Electric Silver coarse flake metallic ^{(i) (ii)}
(sparkling metallic, shifts from silver to blue effect depending on light)



487 Inscription™ Ember Black pearl ⁽ⁱ⁾



492 Savile Grey pearl



493 Capar Green pearl



612 Passion Red ^(iv)



614 Ice White ^(iv)

Please note: It's not possible to reproduce exact original shades in printed matter. Please ask your dealer to show you samples.

- (i) Also available for the XC90 Executive.
- (ii) Also available for the XC90 R-DESIGN.
- (iii) Exclusive to XC90 Executive.
- (iv) Exclusive to XC90 R-DESIGN.

Clean colours

To reduce usage of environmentally hazardous solvents all Volvo exterior colours are water-based. What's more, our painting facilities are among the cleanest in the world.

Aluminium running boards and foot steps

Provide a more striking impression while matching the front and rear skid-plates. What's more, they protect the door sills on uneven surfaces and make it easier to get in and out, and they're useful when loading the roof. Dimensioned for a load of 300 kg. For extra convenience, foot steps can be added to the running board.

Side décor

Running along the bottom of the doors and wheel arches, the side décor gives the Volvo XC90 an even more exclusive appearance. It's painted in the same colour as the vehicle, and features an integrated metallic lower moulding.

Front bumper bar

Integrated in the front bumper to give the vehicle an even more powerful stance. Painted in Silverstone to match other exterior styling details. Alternatively, it can be painted in the same colour as the vehicle.

Aluminium crossbars

An aerodynamic design element that complements the roof rails and the design of your Volvo. These aluminium crossbars also allow you to exploit the roof's load-carrying capacity to the full.

Roof protector ribs

These protect the roof and give the car a more assertive appearance. What's more, you can carry up to 35 kg directly on the ribs by distributing the weight evenly.



EXTERIOR DESIGN Aluminium wheels



18" Camulus
Silver Bright



18" Situla
Silver Bright



17" Neptune
Silver Bright

IMAGINE YOUR NEW INTERIOR. Crafted according to your requirements, the interior of your Volvo can take on any number of personalities. Choose between two interior colours, Off Black and Sandstone Beige, and different upholstery variants. Pick the interior that suits you and add the finishing touch with the interior trim, steering wheel, gear knob and floor mat of your choice. After all, you're probably going to spend a lot of time here.

Ergonomic design Developed in cooperation with ergonomic specialists to provide generous support for the body during hours of driving, the seats in the Volvo XC90 are among the most comfortable in the automotive world. Multiple adjustment possibilities and adjustable lumbar support make it easy to find the perfect driving position.



Soft leather

In a class of its own, this option allows you to enjoy specially designed exclusive seats fully upholstered in finest Soft leather with contrasting seams and piping on all seats. Extra padding in the seats contributes to luxurious seating comfort.



Leather-faced

This is a hide quality that's comfortable, durable and has a coarse grain pattern. Like all Volvo leather, it's organically tanned and ages beautifully.



Marstrand textile/vinyl

This rugged yet elegant upholstery combines two materials. The fabric running through the centre panels is rich in contrast and comfort, while the leather imitation vinyl on the outer panels is smooth and highly practical.

INTERIOR DESIGN



Leather steering wheel,
Off Black



Dark wood steering wheel,
Off Black



Leather steering wheel,
Sandstone Beige



Leather gear knob
Manual



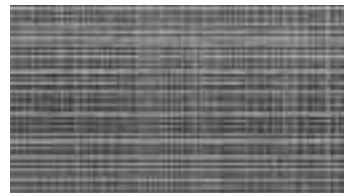
Leather gear knob
Geartronic



Gear knob with Dark wood trim
Geartronic



Manganite trim in tunnel console and
glove box



Cross Brushed aluminium trim in tunnel
console and glove box



Sanded Silver trim in tunnel console and
glove box



Dark wood trim in tunnel console and
glove box

INTERIOR DESIGN Soft leather



Soft leather Off Black (CM00)



Soft leather Chestnut (CM0D)



Soft leather Soft Beige (CM0U)

INTERIOR DESIGN Marstrand



Soft leather Soft Beige (CM10)



Marstrand, textile/vinyl, Off Black (C000)

INTERIOR DESIGN Leather-faced



Leather-faced Off Black (C900)



Leather-faced Calcite (C90T)



Leather-faced Soft Beige (C910)

Upholstery	Upholstery code	Upholstery colour	Dashboard top & door panel colour	Door insert colour	Headliner colour
Executive Soft Leather	CUSU	Soft Beige	Off Black/Off Black	Soft Beige	Quartz
	CUOP	Chestnut	Off Black/Off Black	Chestnut	Quartz
	CU00	Off Black	Off Black/Off Black	Off Black	Quartz
	CU10	Soft Beige	Espresso Brown/Soft Beige	Soft Beige	Soft Beige
R-DESIGN Leather-faced	CBSB	Off Black	Off Black/Off Black	Off Black	Quartz
	CBQJ	Calcite	Off Black/Off Black	Calcite	Quartz
Soft Leather	CM00	Off Black	Off Black/Off Black	Off Black	Quartz
	CM0D	Chestnut	Off Black/Off Black	Chestnut	Quartz
	CM0U	Soft Beige	Off Black/Off Black	Soft Beige	Quartz
	CM10	Soft Beige	Espresso Brown/Soft Beige	Soft Beige	Soft Beige
Leather-faced	C900	Off Black	Off Black/Off Black	Off Black	Quartz
	C90T	Calcite	Off Black/Off Black	Calcite	Quartz
	C910	Soft Beige	Espresso Brown/Soft Beige	Soft Beige	Soft Beige
Marstrand	C000	Off Black	Off Black/Off Black	Off Black	Quartz

Please note: It's not possible to reproduce exact original shades in printed matter. Please ask your dealer to show you samples.

In fine detail.

The nuts and bolts of your Volvo XC90. Whatever you need to know about your new car – whether that's fuel consumption, CO₂ emissions, top speed or boot space – you'll find it here.

ENGINE	3.2 Geartronic	V8 Geartronic	D5
Configuration	Transverse – 24 valve	Transverse – 32 valve	Transverse – 20 valve
Cylinders	6	8	5
Engine capacity, cc	3192	4414	2400
Bore x stroke, mm	84 x 96	94 x 79.5	81 x 93.1
Max. output ECE, PS/kw/rpm	238/175/6200	315/232/5850	185/136/4000
Max. torque ECE, Nm/rpm	320/3200	440/3900	400/2000-2750
Octane rating	95-98 RON unleaded ⁽ⁱ⁾	95-98 RON unleaded ⁽ⁱ⁾	Turbo Diesel
Fuel system	Port fuel injection	Port fuel injection	Common rail direct injection
Compression ratio	10.8:1	10.4:1	17.3:1

PERFORMANCE	3.2 Geartronic	V8 Geartronic	Manual	D5 Geartronic
Top speed, mph	130	130	121	118
Acceleration 0-60 mph, sec	8.9	6.9	10.3	11.1
0-62 mph (0-100 kmh), sec	9.5	7.3	10.9	11.5
Drag co-efficient	0.36	0.36		0.36


FUEL CONSUMPTION ⁽ⁱⁱ⁾⁽ⁱⁱⁱ⁾	3.2 Geartronic	V8 Geartronic	Manual	D5 Geartronic
(Government Approved) Mpg (l/100 km)				
Urban	16.4 (17.2)	14.1 (20.0)	26.4 (10.7)	25.4 (11.1)
Extra Urban	30.7 (9.2)	28.8 (9.8)	40.9 (6.9)	40.4 (7.0)
Combined	23.3 (12.1)	20.9 (13.5)	34.0 (8.3)	33.2 (8.5)
CO ₂ g/km	289	322	219	224
VED (Vehicle Excise Duty) Band	M	M	K	K
Emission Standard	Euro IV	Euro IV		Euro IV

NB All diesel models are fitted with a Diesel Particulate Filter.

POWER STEERING SYSTEM		All models
(rack & pinion)	235 Tyres	12.5 (41.0)
Turning circle, m (ft)	255 Tyres	13.1 (43.0)

	3.2	V8	D5
Brakes			
Disc Diameter Front, mm	17" – 336 Ventilated	17" – 336 Ventilated	16" – 336 Ventilated
Disc Diameter Rear, mm	308	308	308
Transmission			
Manual	–	–	6 speed
Geartronic	6 speed	6 speed	6 speed
Fuel Tank Volume			
litres (gallons)	80 (17.6)	80 (17.6)	68 (15.0)

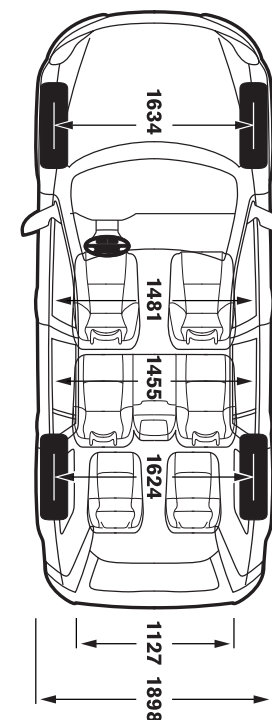
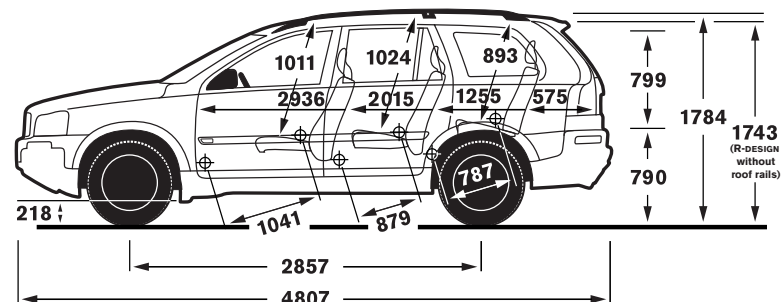
LUGGAGE COMPARTMENT	
Volume, 2nd/3rd Row Folded, litres (cu.ft)	1837 (64.9)
Volume, 2nd Row Up/3rd Row Folded, litres (cu.ft)	615 (21.7)
Volume, 2nd/3rd Row Up, litres (cu.ft)	249 (8.8)

INSURANCE GROUPS	3.2 Geartronic	V8 Geartronic	D5
Active	–	–	15E
SE	–	–	15E
SE Lux	16E	–	15E
Executive	16E	19E	17E
	16E	19E	15E

E = Exceeds security requirements for model concerned and group rating has been reduced.

WEIGHTS	3.2 Geartronic	V8 Geartronic	Manual	D5 Geartronic
Min. kerb weight, kg (actual kerb weight dependent on spec)	2155	2199	2114	2130
Max. possible towing weight braked, kg	2250	2250	2250	2250
Max. towing weight unbraked approx, kg ^(iv)	750	750	750	750
Max towball weight, kg	90	90	90	90
Max. total weight, kg	2760	2770	2740	2750
Max. roof load, kg	100	100	100	100
Max. payload, kg (dependent on spec)	605	571	626	620

GROUND CLEARANCE	
Vehicle Ground Clearance, mm	218
With 2 persons, mm	207
Wading Depth, mm	400
Approach Angle	28°
Departure Angle	25°
Breakover Angle	20°



Notes

- (i) For best performance and lowest fuel consumption 98 RON is recommended. 95 RON can be used for normal driving.
- (ii) The results do not express or imply any guarantee of the fuel consumption of a particular car.
- (iii) Official fuel consumption figures are obtained in accordance with Directive 93/116/EC as amended by 1999/100/EC. The figures are obtained under controlled test conditions and as such consumption achieved on the road will not necessarily accord with the official test results. Factors including driving styles and road, car and weather conditions will also have a bearing on actual fuel consumption achieved.
- (iv) Unbraked towing weight must not exceed 50% of kerb weight up to a maximum of 750 kg.

The weight of a vehicle will influence the level of CO₂ emitted and as a result, vehicles with higher levels of specification and factory fit options may emit higher levels of CO₂. However, Vehicle Excise Duty is charged according to the weight and CO₂ emissions of the standard vehicle, as published in this price list. The weight effect of any additional items does not affect the amount of Vehicle Excise Duty payable.

A weighbridge must be used to determine specific weights.

Data valid for manual transmission unless specified. All measurements in mm. The Max. output figures are quoted in PS (Pferdestärke), which is the metric equivalent of brake horsepower. NB Some of the information in this price list may not be correct due to product changes which may have occurred since it was printed. Some of the equipment described or shown may now be available only at extra cost. Before ordering, please ask your Volvo dealer for the latest information. The manufacturer reserves the right to make changes at any time, without notice, to prices, colour, materials, specifications and models. Volvo Car UK Limited, Globe Park, Marlow, Buckinghamshire, SL7 1YQ.

Meet the family.

Fuel consumption and CO₂ emissions for the Volvo range:

Fuel consumption mpg (l/100 km):
Urban: 57.7 (4.9) – 14.1 (20.0).
Extra Urban: 83.1 (3.4) – 28.8 (9.8).
Combined: 74.3 (3.8) – 20.9 (13.5).
CO₂ emissions: 99 – 322 g/km.

Please note: Some of the information in this brochure may be incorrect due to changes in product specification that may have occurred since printing. Some of the equipment described or shown may now only be available at extra cost. Before ordering, please ask your Volvo dealer for the latest information. The manufacturer reserves the right to make changes at any time and without notice, to prices, colours, materials, specifications and models.

Furthermore: There are options, accessories and packages that can be chosen separately or combined as you like. For more information, please contact your Volvo dealer.

S



Volvo S40 The compact and energetic saloon.



Volvo S80 The premier saloon, meticulously engineered for superior driving comfort.

V



Volvo V50 The Sportswagon — flexible, compact and full of zest.



Volvo V70 The genuine family estate — highly competitive yet comfortably versatile.

XC



Volvo XC60 A sporty coupe and a capable all-roader fused into a Swedish crossover experience.



Volvo XC70 The rugged yet stylish all-roader.



Volvo XC90 The versatile SUV that takes you anywhere with grace.

C



The new Volvo C30 The compact and charismatic SportsCoupe.



The new Volvo C70 A retractable hardtop convertible that seats four adults with comfort.



The end is just the beginning.

It's a simple idea; one point of contact for all your car ownership needs – whether it's about finding the right finance deal or who to contact in an emergency. To get the most out of owning your Volvo, trust Care by Volvo.

STARTING OFF ON THE RIGHT FOOT

You might be surprised how easy and flexible financing can be. Our range of finance, service and insurance options allows you to budget around one key factor – your lifestyle.

FINANCE

Volvo Car Financial Services have developed a series of funding plans that will provide you with a range of choices and flexibility when acquiring a Volvo⁽ⁱ⁾. For details of the current promotions available, please visit www.volvocars.co.uk/financepromotions.

INSURANCE

Volvo Car Insurance is designed for Volvo drivers and because we know Volvos inside out, we can offer exactly the right tools and expertise, fitting only genuine Volvo parts by trained Volvo technicians⁽ⁱⁱ⁾. Your Volvo will come with seven days drive away insurance, so you've already got peace of mind. Because Volvo drivers have an excellent reputation, we can also offer extensive cover at a reasonable price⁽ⁱⁱⁱ⁾.

Call now for your insurance quote on **0800 238 239**, quoting reference BROCH.

WHAT NEXT? If you'd like to find out more about the range of products and services that make up Care by Volvo, the story continues at www.volvocars.co.uk. Alternatively you can contact your nearest Volvo dealer or request relevant brochures.

(i) Finance subject to status. Terms and conditions apply. Guarantees/Indemnities may be required. Applicants must be 18 or over. Volvo Car Financial Services RH1 1SR.

(ii) When using a Volvo approved Body and Paint repairer.

(iii) Volvo Car Insurance is underwritten by Royal & Sun Alliance Insurance plc (No. 93792). Registered in England and Wales at St Mark's Court, Chart Way, Horsham, West Sussex RH12 1XL. Authorised and regulated by the Financial Services Authority. For your protection telephone calls will be recorded and may be monitored. All benefits are subject to qualifying status, terms and conditions, cover level and underwriting criteria. Service and repair benefits are subject to being carried out by a recommended repairer.

MAKING LIFE EASIER

Owning a Volvo should be a safe and enjoyable experience. To ensure it stays that way, we're committed to providing you with the best in support for as long as you own one.

SERVICE PROGRAMME

Your Volvo dealer has the unique know-how to tailor a service programme according to Volvo's strict recommendations and guarantees you years of safety and driving pleasure.

VOLVO ON CALL

Subscribe to Volvo On Call and you'll never be completely on your own. It's a GPS-based communication system providing 24-hour access to both emergency and roadside assistance wherever you are. See the Volvo On Call brochure for more information.

LOOKING AHEAD

You'll probably never find out just how good some of these services are. But should the unexpected happen, we'd like to think that you'd be even happier you chose a Volvo.

ROADSIDE ASSISTANCE

Every new car comes with one year's Volvo Assistance cover. You'll enjoy free breakdown and recovery assistance, anywhere in Europe, 24 hours a day. You can even extend cover for £85 for one year or £155 for two years. Call Volvo Assistance on **08701 650 978**.

WARRANTY

Every new Volvo comes with comprehensive protection. Our warranty covers the first three years or 60,000 miles, whichever comes first. There's a three year unlimited mileage warranty on the paintwork, and either eight or twelve years against rust perforation. If a component fails due to a defect or material fault, your dealer will swiftly rectify the problem, free of charge.

THERE'S MORE TO LIFE THAN A VOLVO.

Volvo. for life



THAT'S WHY YOU DRIVE ONE.

VOLVO

Volvo Car UK Limited
www.volvocars.co.uk

All "On The Road" prices quoted in this price list include Volvo standard national delivery charge, inclusive of number plates and VAT at £535 and the VED (Vehicle Excise Duty) car tax as of 1st May 2009. This charge does not include any provision for fuel. The "On The Road" price also includes a £55 vehicle first registration fee (as set by the government - excludes Channel Islands and Isle of Man). Recommended retail prices quoted do not include these additions.

MODEL YEAR 2010 EDITION 5
Issued 01/01/2010