



PEUGEOT **508 / 508 SW**



**PEUGEOT**

# EXPERIENCE QUALITY TIME

With strong visual identity, innovation and state-of-the-art equipment, the 508 and 508 SW embody the very best of the Peugeot spirit, ensuring each moment on board is of the highest quality.

















## INTENSE EMOTIONS

With elegance, strength and perfect balance, the style of the 508 suggests a vehicle sculpted from a single block.

At the front, the 508 defines the new stylistic codes of Peugeot. The grille is “floating”, giving the impression of being detached from the bodywork.

Combining chrome and satin surfaces, the feline headlamps have been designed with particular care and can be equipped with LED day time running lights.\*

At the rear, three red tubes resembling claws in the tail lights shelter three rows of LEDs. The lines of the vehicle’s sides are intentionally refined and set off by the satin chrome surround\*\* of the glazed surfaces.

\*Standard, optional or not available according to version.

\*\*Standard or not available according to version.

# MOMENTS OF REFINEMENT

The passenger compartment of the 508 and 508 SW is a true invitation to travel, making driver and passengers feel immediately at ease. Refined style, exceptional materials, meticulous finish and superb technology contribute to a first class ambience.











## COMFORT ON DEMAND

Take your seat on board the 508 or 508 SW and you'll immediately experience a feeling of satisfaction. Well-designed architecture means you enjoy both a generous amount of space and equipment that is perfectly suited to your needs.

### **Storage compartments**

For convenience, the 508 and 508 SW include several carefully considered storage spaces to make life on board even easier: a glove box ventilated with cool air, 2 cup holders in the front and 2 in the rear\*, spacious door pockets and a storage compartment under the central armrest.

\*Standard or not available according to version.

### **Quad-zone air conditioning**

In addition to the manual mono-zone and automatic dual-zone\* air conditioning systems, the 508 and 508 SW can be equipped with quad-zone air conditioning\*, allowing the driver and front and rear passengers to have their own air conditioning control.

### **Seats**

The front seats have been developed to deliver style, comfort and support. Electric\* and heated\* options are available, whilst fine leather upholstery provides an additional level of luxury\*.

In the rear of 508 and 508 SW, the spacious bench seat is comfortable and welcoming, following the example of the front seats.

\*Standard, optional or not available according to version.

### **Independent programmable heating**

For extra comfort, the 508 and 508 SW can be equipped with an independent programmable heating system\* allowing pre-heating or pre-ventilation of the interior so it's at a perfect ambient temperature.

\*Standard, optional or not available according to version and engine.





DESIGNED FOR OPEN SPACES



AN OUTSTANDING VIEW





### **An amazing panoramic glass roof**

The 508 SW can be equipped with an amazing panoramic glass roof\* which extends to the rear seats, so giving an extraordinary impression of space on the inside and a dynamic and modern style on the outside.

With a surface area of 1.62 m<sup>2</sup>, it floods the cabin with light, bringing a sense of wellbeing. For added comfort, it has an electric shutter system. With 5 pre-set positions, its one-touch rotary control allows you to adjust it to your requirements.

\*Standard or not available according to version.





# PRACTICAL FEATURES

## A vast boot

The 508 and 508 SW each provide a remarkable amount of boot volume for their category. Use of space has been optimized throughout the models and numerous storage solutions are provided.

The boot volume of the 508 SW\* reaches a generous 660 litres (560 dm<sup>3</sup> VDA), with the seats raised, and up to 1,865 litres (1,598 dm<sup>3</sup> VDA), once the seat backs have been folded down.

The rigid mat of the 508 SW compartmentalises the boot as it folds, which also facilitates access to the additional storage compartments.

\*The boot of the 508 SW can be opened by means of a motorised tailgate\*\*, controlled from the driver's seat, remotely, or on the tailgate itself.

\*Saloon: 545 litres (515 dm<sup>3</sup> VDA), seats raised, up to 1,581 litres (1,381 dm<sup>3</sup> VDA), seat backs folded down. Storage compartments under the boot mat of 48 litres (42 dm<sup>3</sup> VDA\*\*) included.

\*\*Standard, optional or not available according to version.







## COUNT ON ITS INTELLIGENCE

Intelligent, innovative and intuitive, the 508 and 508 SW benefit from new generation technology. These features keep you informed, assist you and make driving easier.

### **Peugeot Open and Go System\***

Replacing the conventional mechanical key with this system\*, simplifies access to and starting of 508 or 508 SW.

Just keeping the electronic key in a pocket or handbag will unlock the doors and the engine can be started or stopped with a simple press of the Start/Stop button. Finally, when leaving the car, just brushing the handle with a hand will lock the vehicle's doors.

\*Standard or not available according to version.



#### **Colour head-up display\***

Allows the driver to have visibility of key driving information, without the need to look away from the road ahead. The head-up display projects speed, cruise control/speed limiter settings, navigation instructions and more onto a retractable strip within the driver's field of vision.

\*Standard, optional or not available according to version.

#### **Parallel parking guide\***

This function is coupled with the front and rear parking assistance. It measures the space available and indicates on the multifunction screen whether you can park and the level of difficulty of the manoeuvre to be carried out.

\*Optional or not available according to version.







## TECHNOLOGICAL ASSURANCE

### Audio and navigation system

508 and 508 SW has either Peugeot Connect Sound (RD5) or Peugeot Connect Navigation (RT6).

The Peugeot Connect Sound (RD5) is a dual tuner radio/CD/MP3 and is connected to multiple speakers\*\*. It has a USB/jack socket as standard and can be fitted with a Bluetooth® hands-free kit\*.

The Peugeot Connect Navigation (RT6)\* has a latest generation navigation system, with European mapping, radio/CD/MP3, 7" colour screen, Bluetooth® hands-free kit and USB/jack socket. It also provides access to emergency and assistance call services (Peugeot Connect SOS and Peugeot Connect Assistance). It's controlled from the navigator located on the centre console, with the most frequently used commands controlled from the steering wheel.

The USB/jack socket fitted on the entire 508 range as standard is installed in a storage compartment located under the central armrest, allowing easy connection of portable equipment.

\*Standard or optional according to version.

\*\*According to version.

### The Arkamys system and the JBL HIFI kit

The 508 and 508 SW are fitted with Arkamys digital sound processing as standard, which creates a more balanced sound ambience.

For High Fidelity sound, the 508 and 508 SW offer a JBL HIFI kit\* of 10 speakers coupled with a 500W amplifier. Among these 10 speakers, the 508 range includes a central channel situated on the fascia panel and a bass box in the boot.

\*Optional according to version.



## GT: THE EPITOME OF LUXURY

The choice of 508 GT or 508 SW GT, demonstrates the best of the 508 range and provides an exceptional experience thanks to its excellent equipment levels. The interior provides remarkable comfort on board while the refinement of the exterior accentuates its outstanding style.





#### **Exterior and interior finishes**

The choice of 508 GT or 508 SW GT, demonstrates the best of the 508 range and provides an exceptional experience thanks to its excellent equipment levels. The interior provides remarkable comfort on board while the refinement of the exterior accentuates its outstanding style.

The care taken over the interior finishes creates an exceptional environment discerned at first glance. The choice of the materials used such as aluminium for the decoration or the Nappa leather for the trims, contributes to the top-of-the-range ambiance of the passenger compartment.

#### **Interior comfort and driving comfort**

Interior comfort and driving comfort are the watchwords of the GT version thanks to its equipment. Full leather trim, coupled with heated and electric seats offers luxury and convenience, whilst equipment including Peugeot Connect Navigation (RT6) and colour head-up display ensures a complete driving experience.

#### **Exemplary road holding**

Peugeot's expertise in suspension and wheel technology, coupled with its distinguished motor sports heritage, provides a foundation for excellence in road holding.

Fitted on the 508 GT and 508 SW GT, a double wishbone front suspension with drop link hub carrier provides high level directional stability, and allows a unique driving experience.

The 2.2L HDi 204 bhp diesel engine gives the 508 GT and 508 SW GT an exceptional level of performance and agile re-acceleration with remarkable acoustic comfort. At the same time the engine emits only 150 g of CO<sub>2</sub>/km in the saloon and 154 g of CO<sub>2</sub>/km in the SW.





THE CHOICE OF EFFICIENCY





2.2 HDi 200bhp FAP

# ENGINES

## 1.6 VTi 120bhp

This engine, combined with a 6-speed, electronically controlled, manual gearbox, offers good balance between driving pleasure and fuel consumption.

## 1.6 THP 156bhp

Offered with a 6-speed manual gearbox, this engine has very high torque availability even at low engine speeds, combining dynamism and smoothness normally associated with a much bigger cc engine.

## 1.6 HDi 112bhp FAP

This engine, equipped with a 5-speed manual gearbox, offers excellent synthesis of efficiency and consumption for true enjoyment behind the wheel.

## 1.6 e-HDi 112bhp FAP (see opposite)

## 2.0 HDi 140bhp FAP

Equipped with a 6-speed manual gearbox, this engine offers total driving pleasure. It has considerable torque to guarantee appreciable re-acceleration.

## 2.0 HDi 163bhp FAP

This engine, coupled with a 6-speed automatic gearbox, offers exceptional performance and dynamism, to make driving a pleasure.

## 2.2 HDi 200bhp FAP

The most prized engine of the 508 range and available only on the GT version, this engine has a 6-speed automatic gearbox. It offers agile acceleration and excellent driving comfort, while at the same time controlling fuel consumption and CO<sub>2</sub> emissions.



## e HDi TECHNOLOGY: 1.6 e-HDi 112bhp FAP

Environmental responsibility is one of mankind's greatest challenges. Creating innovative technology to cut emissions and fuel consumption is a step in the right direction and on the 508 range, Peugeot has introduced a new-generation Stop & Start system featuring e-HDi technology.

This automatically switches off the engine whenever the vehicle becomes stationary, for example, at a red light or a "Stop" sign. With improved technology,

restarting is particularly smooth when the driver wishes to continue his or her journey. Peugeot e-HDi technology offers better control of fuel consumption and emissions of CO<sub>2</sub>. This technology is combined with a 6-speed, electronically controlled, manual gearbox.

# PEUGEOT AND THE ENVIRONMENT

Peugeot offers an extensive range of low emission vehicles – more than half of its worldwide sales are of vehicles producing less than 140 g of CO<sub>2</sub> per km. Peugeot is the leader in a range of proven technologies designed to improve environmental performance. For example, the diesel engine combined with particle emission filter (FAP), results in a 99.99% reduction of particle emissions. Launched in 2000, this technology is now fitted in more than 2.1 million vehicles. Peugeot's breakthrough technology includes integration of the Stop & Start system and the development of a new generation of HDi engines.

## **HDi FAP**

A high-performance emission control system, the Particle Emission Filter (FAP) is combined with HDi technology. A self-cleaning system, it treats the gas resulting from the combustion of the diesel in the engine. The filter contributes to reducing the diesel particles, bringing them to the measurable limit (0.004 g/km). The simple end result is a cleaner diesel engine.

## **Gear shift indicator\***

This indicator guides the driver to select the best gear at all times for the most efficient fuel consumption.

\*Available on vehicles fitted with manual gearbox.





# FUEL CONSUMPTION AND EMISSIONS

		508 Fuel Consumption MPG (litres/ 100 km)*			
	Gearbox	Urban	Extra-Urban	Combined	CO <sub>2</sub> (g/km)
<b>Petrol engines</b>					
1.6 VTi 120bhp	6 speed EGC**	34.4 (8.2)	55.4 (5.1)	45.6 (6.2)	144
1.6 THP 156bhp	6 speed manual	30.7 (9.2)	58.9 (4.8)	44.1 (6.4)	149
<b>Diesel engines</b>					
1.6 HDi 112bhp FAP	5 speed manual	47.9 (5.9)	68.9 (4.1)	60.1 (4.7)	124
1.6 e-HDi 112bhp FAP	6 speed EGC**	55.4 (5.1)	70.6 (4.0)	64.2 (4.4)	109
2.0 HDi 140bhp FAP	6 speed manual	44.1 (6.4)	72.4 (3.9)	58.9 (4.8)	125
2.0 HDi 163bhp FAP	6 speed automatic	36.2 (7.8)	62.8 (4.5)	49.6 (5.7)	149
2.2 HDi 204bhp FAP	6 speed automatic	35.3 (8.0)	64.2 (4.4)	49.6 (5.7)	150

		508 SW Fuel Consumption MPG (litres/100 km)*			
	Gearbox	Urban	Extra-Urban	Combined	CO <sub>2</sub> (g/km)
<b>Petrol engines</b>					
1.6 VTi 120bhp	6 speed EGC**	34.4 (8.2)	54.3 (5.2)	44.8 (6.3)	145
1.6 THP 156bhp	6 speed manual	30.4 (9.3)	56.5 (5.0)	43.5 (6.5)	150
<b>Diesel engines</b>					
1.6 HDi 112bhp FAP	5 speed manual	47.9 (5.9)	67.9 (4.2)	58.9 (4.8)	125
1.6 e-HDi 112bhp FAP	6 speed EGC**	55.4 (5.1)	68.9 (4.1)	62.8 (4.5)	110
2.0 HDi 140bhp FAP	6 speed manual	41.5 (6.8)	70.6 (4.0)	56.5 (5.0)	130
2.0 HDi 163bhp FAP	6 speed automatic	36.2 (7.8)	62.8 (4.5)	49.6 (5.7)	149
2.2 HDi 204bhp FAP	6 speed automatic	34.9 (8.1)	60.1 (4.7)	47.8 (5.9)	154

\*EU directive '2004/3. Always refer to price and specification guide for latest information.

\*\*Electronically controlled manual gearbox (EGC).

# SAFETY

## Braking system and ESP\*

Driver and passenger safety is of paramount importance on 508 and 508 SW. Peugeot's Electronic Stability Programme (ESP), which groups together a host of braking technologies ensures dynamic handling and delivers a high level of safety.

## Electric parking brake\*

The electric parking brake is automatically applied when the engine is stopped, including if it is stalled. The parking brake is then automatically released on acceleration.

The Hill Assist function coupled with the electric parking brake maintains the brake temporarily (for 2 seconds) when the vehicle is on a gradient.

\*Standard or not available according to version.

## Cruise control/speed limiter\*

The cruise control allows a constant speed to be maintained. The speed limiter allows you to program in a speed that cannot be exceeded. These functions can be controlled from the multifunction steering wheel.

\*Available as standard or as an option according to version.

## Airbags

In the event of a collision, 6 air bags increase the protection of the occupants: 2 front air bags, 2 front side air bags and 2 curtain air bags covering front and rear.

## Head rests

The front head rests on 508 and 508 SW are designed to allow precise positioning at the required height. Their size and fold-over shape allows close adjustment to the heads of the occupants for a high level of protection.



## 3 & 4 Bi-Xenon directional headlamps\*

508 and 508 SW can be fitted with bi-Xenon directional headlamps coupled with LED-based day-time running lights for a unique stylistic signature.

\*Standard, optional or not available according to version.

### PEUGEOT CONNECT SOS\*

Peugeot's emergency call service will be made available during 2011 to the whole of Europe including the UK. When every minute is important, you can count on PEUGEOT CONNECT SOS\* to act quickly.

**Automatic emergency call:** if the air bags or seat belt pretensioners are triggered, the vehicle makes an emergency call automatically without any action by the driver. PEUGEOT CONNECT SOS\* then locates the vehicle, establishes telephone communication with its occupants and dispatches the appropriate emergency services. The communication can take place in the language of origin of the owner of the vehicle.

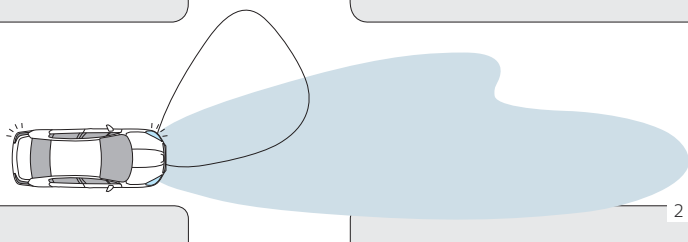
**Manual emergency call:** when a 508 driver is the victim of or witness to a critical situation (illness, attack), he or she can rely on PEUGEOT CONNECT SOS\*. To manually use the system, he/she simply has to press (for 3 seconds) the SOS button located on the fascia panel.

PEUGEOT CONNECT SOS is currently active in 10 European countries and will become active in Great Britain during 2011. On 508 the system is standard, optional or not available according to version.

### 1 Peugeot Smartbeam Assistance\*

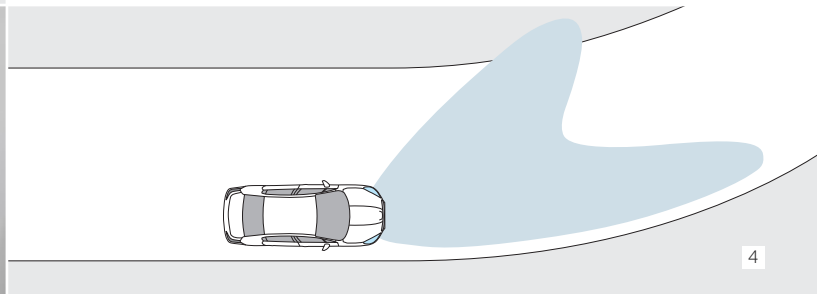
At night, a dedicated camera continuously analyses the light conditions (lights of other vehicles, street lamps, etc.) and switches the headlamps to main beams as soon as possible to improve visibility.

\*Standard, optional or not available according to version.



### 2 Additional directional lighting

With the dipped headlamps or main beam headlamps on, if the vehicle speed is lower than 25 mph (40 km/h), the beam of the front fog lamp lights the inside of the turn. This additional lighting is of particular use in town, at crossroads, on very winding roads, when parking, etc.



# COLOURS AND DECORS

The 508 and 508 SW offer a choice of 10 body colours: metallic, pearlescent or plain. A range of fascia panel decorations are also used (depending on version), contributing to a top-of-the-range ambience within the passenger compartment.

## METALLIC COLOURS



Aluminium



Thorium Grey



Flint



Bistre

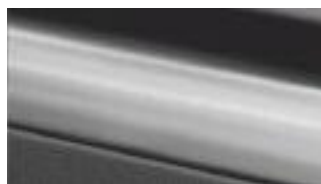


Oyster



Alpine Blue

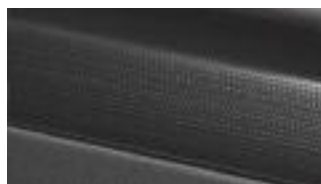
## DECORS



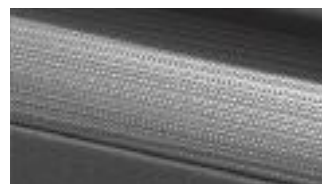
Brushed Aluminium\*



Hammertone\*



Echo\*



Prismatic\*



## SOLID COLOUR



Nero Black



Bianca White

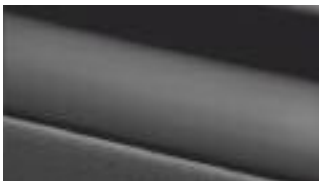
## PEARLESCENT COLOUR



Egyptian Blue



Pearlescent White



Matt Black\*

\*Availability according to version.

# WHEELS

A wide range of alloy wheels is available on 508 and 508 SW.



Mira 16" wheel trim\*



Altair 16" alloy wheel\*



Kastra 16" alloy wheel\*



Accessory 16" alloy wheel style 03\*\*



Rana 17" alloy wheel\*

\*Standard, optional or not available according to version.

\*\*Available as an accessory.



Sirius 17" alloy wheel\*



Accessory 17" alloy wheel style 06\*\*



Hydrus 17" alloy wheel\*



Naos 18" alloy wheel\*



Accessory 18" alloy wheel style 08\*\*



Electra 18" alloy wheel\*



Capella 19" alloy wheel\*

# ACCESSORIES

Accentuate the elegant and dynamic lines of 508 and 508 SW with Peugeot accessories.

## STYLE

- 1 Boot spoiler**  
Discreet and aerodynamic, this boot spoiler emphasises the exclusive line of the 508.
- 2 Accessory 17" alloy wheel, style 06**
- 3 Chrome door mirror covers**



## MULTIMEDIA

- 1 Wi-Fi On Board Unit**  
Wi-Fi unit coupled with 3G / 3G+ key allowing continual internet access.
- 2 Multimedia support**  
Attached to the head rest rod, the support will pivot on its base to allow adjustments to the angle of vision and is compatible with most portable players.



## TRANSPORTATION



**SW sliding floor**  
This sliding platform helps makes loading luggage easier.

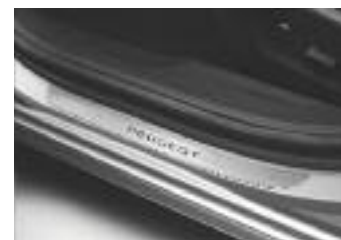


**Boot organiser**  
Boot separators to facilitate the safe transport of cargo.

## PROTECTION



**Bumper protection**  
Consists of 4 pieces of transparent resin positioned on vulnerable points of the bumper.



**Door sill protectors**  
In carbon effect PVC or stainless steel, this products looks good and protects the car sills.

NAPPA LEATHER





Nappa leather\* seat trim expresses elegance and quality, reinforcing the top-of-the-range character of 508 and 508 SW.

\*Leather seats. For detail refer to price and specification guide. Standard, optional or not available according to version.

1 Cohiba Nappa leather trim

2 Tramontane Nappa leather trim



# CLAUDIA LEATHER TRIM



Claudia leather trim\* is a high quality grained leather which contributes to the refinement of the passenger compartment.

\*Seats in leather and other materials. For details, refer to price and specification guide. Standard, optional or not available according to version.

1 Aries Claudia leather trim

2 Tramontane Claudia leather trim



1



2

# MARSTON TRAMONTANE HALF LEATHER

The Marston Tramontane half-leather\* trims (presented below) stand out through their distinct overstitching and add to the dynamic feel of the passenger compartment.

\*Seats in leather and other materials. See price and specification guide for details of availability. Standard, optional or not available according to version.



# CLOTH TRIMS

A range of cloth trims are used on 508 and 508 SW\*

1 Dara Tramontane cloth trim

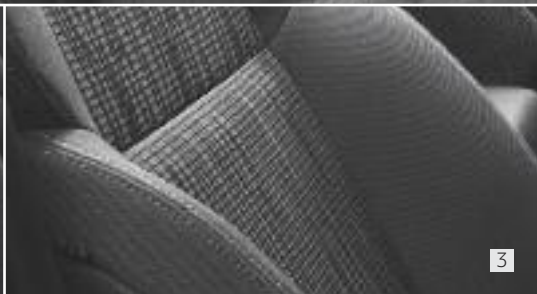
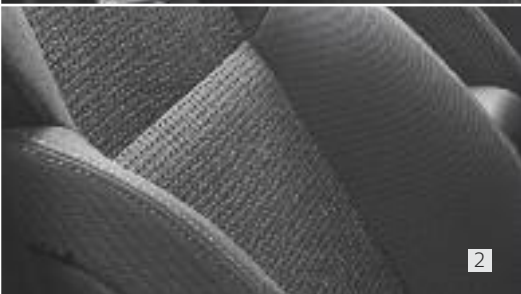
2 Cocher Tramontane cloth trim

3 Nervuron Tramontane cloth trim

4 Nervuron Ariès cloth trim

Drop Tramontane cloth trim (not shown)

Duoz Tramontane cloth trim (not shown)





[www.peugeot.co.uk](http://www.peugeot.co.uk)

For further information about 508 or 508 SW and to configure a model to your specific requirements, visit Peugeot online at the above address.



# PEUGEOT AND YOU

When you choose Peugeot, you have the reassurance of knowing that your vehicle has been designed and built to give you years of worry-free motoring. Also, as a Peugeot owner, you can rely on the customer care services of your Dealer. This will ensure that you're talking to a specialist who'll listen to you, understand your problems and respond efficiently – someone who also has the expertise to maintain your Peugeot correctly, using trained technicians, Peugeot Diagnostic Equipment and Peugeot Original parts.

## PEUGEOT WARRANTIES

As well as the 2 year unlimited mileage manufacturer's Warranty, all vehicles first registered in the UK and purchased from a UK Peugeot Dealer come with a free, optional additional year of Warranty through the Peugeot UK Dealer network. The mileage limit on this additional warranty is 60,000 miles (100,000 miles for Boxer vans excluding Motorhomes and other converted vehicles) from first registration. At the end of the 3 year Warranty period (or after 60,000 miles) you have the option to purchase a Peugeot Platinum Extended Warranty. Our cars also come with a 12 Year Anti-Perforation and 3 Year Paint Warranty (6 and 2 years on vans). For full terms and conditions on all of these, please contact your Peugeot Dealer.

## PEUGEOT ASSISTANCE

All new Peugeots come with 12 months' Peugeot Assistance – our breakdown assistance service. This covers all incidents involving vehicle-based faults for you and anyone else driving your car with your permission. It is available 24/7, 365 days a year. Peugeot Assistance includes European cover, homestart, roadside assistance, vehicle recovery and a free replacement car or accommodation if required. It can be extended for a further 12 months, or 24 months, and to protect you against non-vehicle faults (such as punctures) at specially discounted rates, by calling 0870 752 7050.

## PEUGEOT SERVICE CARE

Peugeot vehicles benefit from extended service intervals of up to 20,000 miles or 2 years (12,000 miles for 1.6 HDi diesel and 2.0 litre 180 bhp petrol engines; 24,000 miles or 2 years on Boxer, 10,000 miles or 1 year on 107). Please refer to the maintenance book for details of the service intervals for specific models and vehicles operating in arduous conditions.

## PEUGEOT FINANCIAL SERVICES

Offer a range of flexible finance plans to make owning a new Peugeot easy. As specialists, we will provide choice, convenience and flexibility. Written quotations are available on request from Peugeot Financial Services, Quadrant House, Princess Way, Redhill RH1 1QA. Over 18's only, a guarantee may be required.

## PEUGEOT INSURANCE

Designed for Peugeot to offer tailored cover at a competitive price. In the event of an accident, a Peugeot Approved Accident Repair Centre will repair your car, using Peugeot original parts and offer a courtesy car (subject to availability). Call Peugeot Insurance for a quote on

0870 0240 206. (8am-8pm weekdays, 9am- 5pm Saturdays. Max call charge from a BT landline is 8p/minute. Calls from other networks may vary. Calls may be recorded). Peugeot Insurance is underwritten by UK Insurance Limited. Conditions apply.

## PEUGEOT ACCESSORIES

Peugeot Accessories are designed specifically for each model meaning no compromises on fit or function. In addition they are tested to a rigorous standard for complete confidence and peace of mind.

## PEUGEOT AND THE ENVIRONMENT

Our website has detail of Peugeot's environmental and recycling policies.

## ABOUT THIS BROCHURE

The information contained in this brochure is based on the data and images available at the time of printing. Some features may

not be available in the UK and some photography may feature left hand drive models. As part of a policy of continuous specification improvement, Peugeot

reserves the right to modify specification, options and colours at any time. For full details ask your Peugeot Dealer, or click on [www.peugeot.co.uk](http://www.peugeot.co.uk).

Print and photographic processes used in this brochure may alter the depth and tone of the colours shown.

This brochure is not a contractual document or offer of sale.

The details in this brochure cannot be reproduced without the expressed authorisation of Peugeot.

Issued by: Sales and Marketing Peugeot Motor Company plc Pinley House 2 Sunbeam Way Coventry CV3 1ND

For details of HM Forces tax-free military sales contact:

Peugeot Export, 615 Penistone Road, Sheffield, S6 2GA

Telephone: 0114 285 6181

Email: [peugeot.export@peugeotmail.co.uk](mailto:peugeot.export@peugeotmail.co.uk) [www.export.peugeot.co.uk](http://www.export.peugeot.co.uk)

Customers seeking End of Vehicle Life information should call 0845 257 3233 For all other enquiries please call

0845 200 1234 (Calls will be charged

at local rate and may be recorded for training or quality purposes)



Création : bd-ntwk – Réalisation : Altavia Paris – Edition : Gutenberg Networks – Automobiles  
Peugeot RC Paris B 552 144 503 – Imprimé en U.E. – November 2010. **MCP3470**