

RENAULT CLIO



DRIVE THE CHANGE



WHO BETTER THAN RENAULT TO SERVICE YOUR RENAULT?

Your new Renault Clio is covered by a 3-year warranty package – the first 2 years of unlimited mileage Renault manufacturer warranty, followed by a further year of cover up to 60,000 miles. Paintwork is also guaranteed for 3 years while the anti-corrosion warranty runs for 12 years. In addition, the Renault Assistance plan ensures prompt help in the UK and Northern Ireland for manufacturer defects for 36 months. For full details please refer to the Renault warranty terms and conditions, available from your Renault Dealer or from www.renault.co.uk.

SERVICE INTERVALS (EURO5)

All models 18,000 miles / 2 years

EXCEPT:	18,000 miles / 1 year:
12,500 miles / 2 years: <ul style="list-style-type: none">• Twingo 1.2 TCe 100 & Renaultsport 133• Mégane Renaultsport 250	<ul style="list-style-type: none">• Kangoo 1.6 16V 105 (Euro4)
12,000 miles / 2 years: <ul style="list-style-type: none">• Wind Roadster, Modus, Grand Modus & Clio 1.2 TCe 100 & 1.6 VVT 133• Clio Renaultsport 200	
<small>Service required at the mileage or time interval shown, whichever is sooner.</small>	

ENGINES WITH OIL CONTROL SYSTEM (OCS)

- PETROL 1.2 TCe 100, 1.4 TCe 130, 2.0 TCe 180, 1.6 VVT 128, 1.6 VVT 133, Renaultsport 133 & 250

- All DIESEL engines

OCS monitors driving conditions that directly affect the quality of your engine oil, protecting your engine from excessive wear and possible bearing failure. Under certain conditions; low speeds, heavy traffic, door-to-door deliveries (engine turning with little distance travelled) or in high gear for long periods; sport driving, towing a caravan/trailer over 500kg (engine turning at higher revolutions), the vehicle's service interval may be shortened and you will be alerted, via the instrument panel service indicator, that a Renault Service is required earlier (refer to driver's handbook for details).

EXTENDING YOUR WARRANTIES AND COVER

Renault Extended Warranty allows you to extend your Renault Warranty up to 5 years or 80,000 miles.

Renault Assistance Added Cover provides you with additional cover for incidents not covered by Renault Assistance: incorrect (or lack of) fuel, keys lost, stolen or locked inside the vehicle and incidents involving caravans or trailers.

For full information on these products please ask your Renault Dealer or log on to www.renault.co.uk and click on 'Owner Services', where you can also buy securely online.

SERVICE PLANS

When you buy a new car, you can also purchase a Fixed Price Service Plan. Prices start from just £199 and the plan covers your recommended manufacturer servicing up to 3 years or 30,000 miles, whichever comes first.* For more details ask your dealer or log on to www.renault.co.uk and click on 'Owner Services'.

*Plan only available at the time of vehicle purchase.

RENAULT ACCIDENT SUPPORT LINE - 0800 085 8005

The Renault Accident Support Line (RASL) is a dedicated service from Renault for all Renault drivers and their families, no matter what car they drive. This service is available at no cost to you, regardless of fault. RASL will deal with every aspect of your claim, from ensuring you are recovered to a Renault Approved Accident Repair Centre to dealing with all insurance companies giving you total convenience and peace of mind. 0800 085 8005 is the only number you need so please programme it into your phone and make sure that in the event of an accident you call us first and we will take care of everything.

RASL will:

- Arrange recovery of your vehicle from the scene of the accident to a Renault Approved Accident Repair Centre
- Organise the repairs at a Renault Approved Accident Repair Centre using only Renault Original Parts
- Deal with all insurance companies, both yours and the other parties'
- Provide a like for like replacement vehicle if the accident is not your fault
- Pursue the at fault party for all associated costs if the accident is not your fault
- Use the same paint as during manufacture
- Provide a 5 year repair guarantee on paint and repairs
- Ensure you do not have to pay a policy excess if the accident is not your fault
- Provide the same service for your family free of charge regardless if their car is a Renault or not
- Ensure that yours and your passengers' safety are guaranteed and your five star NCAP rating will not be compromised

FINANCE OPTIONS

There are a wide variety of ways in which the purchase of a new car can be financed. Renault Finance offers all of them, so whether you're a fleet buyer or a private buyer, Renault Finance is ideally placed to tell you which plan or combination of plans best suits your needs and circumstances.

RENAULT NETWORK SERVICES

No-one is better placed than Renault to maintain, fit and repair your Renault, fast. The Renault Minute (maintenance and repair with no appointment necessary) and Renault Rapide Bodycare (bumper scuffs, dings and dents, windscreen, stone chips and interior repairs...) services deliver the highest level of repair and maintenance and offer a full year's guarantee on Original Renault Parts. And don't forget to have a look at our wide range of additional equipment and accessories!

RENAULT INSURANCE

A car as well designed as your Renault deserves an insurance policy to match. Renault Insurance has been specifically created to provide superb protection for you and your car. In addition to a very competitive premium, Renault Insurance also includes: Renault Genuine parts fitted in Renault Accident Repair Centres, protecting your 12 year anti-corrosion warranty; repairs guaranteed for 3 years; a courtesy car for the duration of any repairs subject to availability when you use an approved repairer; payment by instalments - subject to status.

Lines open 8am – 8pm weekdays, 9am – 5pm Saturdays and 10am – 3pm Sundays. Calls may be recorded. All quotes are based on individual circumstance and subject to insurers underwriting criteria. Renault Insurance is arranged and administered by Equity Direct Broking Limited, which is authorised and regulated by the Financial Services Authority. Registered Office: Library House, New Road, Brentwood, Essex, CM14 4GD. Registered in England & Wales No. 6710272.

† 100,000 miles for Laguna and Espace.

CUSTOMER SERVICES

Renault knows the value of communicating with its customers and we have established effective ways to keep in touch with you. If after speaking to your local Renault dealership you are not completely satisfied, please contact the Renault UK Customer Service Department on 0800 072 3372 (Mon-Fri 9.00am to 5.30pm). You can also visit our website www.renault.co.uk Or write to us at: Renault UK Ltd, The Rivers Office Park, Denham Way, Maple Cross, Rickmansworth, Hertfordshire, WD3 9YS.

Find out more about your vehicle at www.e-guide.renault.com



WHY RENAULT? WE'RE DRIVEN BY A PASSION TO MEET AND EXCEED PEOPLE'S NEEDS, AND THAT'S WHAT DRIVES THE INDUSTRY FORWARD. IT'S BEEN THAT WAY WITH US FOR OVER A HUNDRED YEARS. BUT IN TODAY'S RAPIDLY-CHANGING ENVIRONMENT, IT'S MORE IMPORTANT THAN EVER THAT WE SOURCE NEW SOLUTIONS THAT WILL SAFEGUARD ALL OUR FUTURES.

We know that the car is at a turning point, it has to evolve whether you believe in global warming or not; to emit less in cities, to make less noise and to use increasingly scarce energy more efficiently.

At Renault we are working to create more affordable cars, with radically lower CO₂ emissions. For the widest possible audience. Today that's our collection of 'eco²' models. Eco² indicates that the vehicle produces CO₂ emissions lower than 140 g/km, it includes at least 5% recycled plastic in its plastic mass, and has been designed in such a way that 95% of the materials used could have a second life (recyclable for other use or as a source of energy). In addition, eco² means that our factories are ISO 14001 certified.

Starting this year there will be a groundbreaking range of electric vehicles, from a nippy town car to a comfortable family saloon and a small van. They will be affordable to run – you will be able to drive up to 100 miles using a battery that costs typically £3 to charge, and a lot less using cheaper tariffs. And parking and congestion charges should all be lower too.

We believe it's time to make the car a driver of progress once more. We are determined to drive that change. Soon you will be able to join us.

RENAULT. DRIVE THE CHANGE.



CLIO:
3 CARS WITH A BRAND NEW DESIGN AND FIVE STAR FEATURES.
A BENCHMARK FOR THE WAY AHEAD, WITH DIRECTIONS
BY CARMINAT TOMTOM.



Clio arrives, oozing class. A flash of sunlight outlines the elegant silhouette, the purposeful shoulders, those streamlined headlights. Clean contours cut through the air gracefully. Sporty and stylish by nature, Clio lives up to its reputation as the small car with big car attributes.



You could be on the road which brings them back from school every afternoon. It could be a trip like any other... or it could be a surprise weekend away. Whatever your journey, the sleek Clio Sport Tourer will get you there in style.

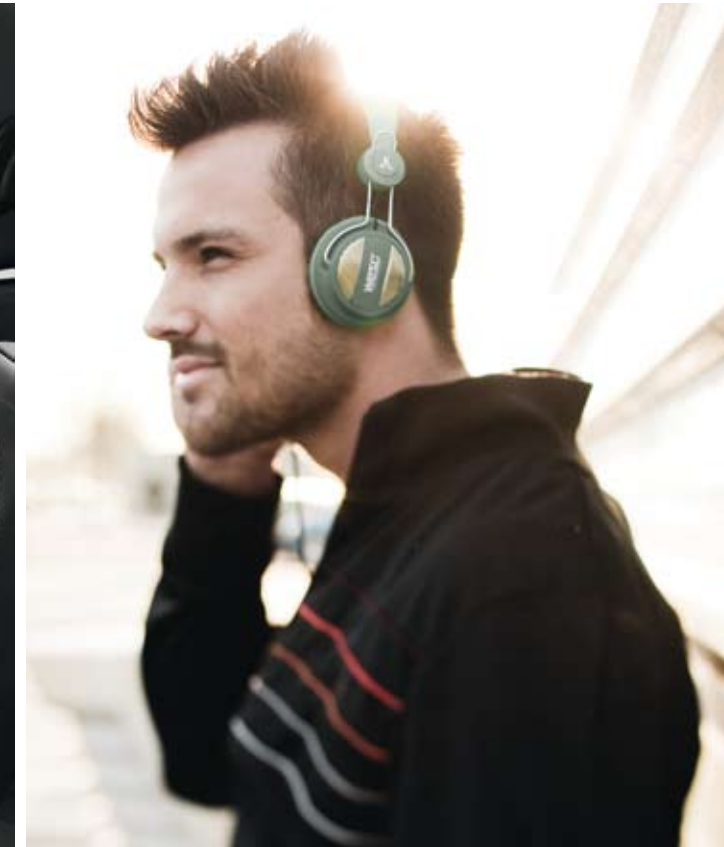
CLIO SPORT TOURER
STYLE AND SPACE

INSPIRED SPORTY DESIGN



INNER BEAUTY

COMFORT AND TECHNOLOGY.



With Clio, the interior is supremely comfortable and attractive. Everything is positioned so it's easy to reach, including the Carminat TomTom. Carminat TomTom makes navigation simple. It is Renault's latest GPS navigation system and is the fruit of an exclusive partnership between Renault and TomTom, to produce a fully integrated navigation unit at an affordable price. And now, Renault offers Carminat TomTom® LIVE. Developed with TomTom®, the globally recognised specialist, the Carminat TomTom® LIVE system brings together a complete range of high-performance and accessible functions, with its intuitive remote control. With one safe movement, you can benefit in real time from high definition traffic information or mobile speed camera warnings. It's easy to update too, with a wide range of online services.

SAFETY



1

1. FIXED CORNERING LIGHTS

These lights activate automatically (under 37mph) when cornering to give you a wider field of vision.



2

2-3. FRONT AND REAR FOG LIGHTS

See and be seen in low visibility conditions.



3

4. DEACTIVATION OF FRONT PASSENGER AIRBAGS

Enables a child seat to be fitted in the front in complete safety.

5. ISOFIX CHILD SEAT MOUNTING POINTS

The ISOFIX 3-point mounting points on the rear outer seats allow the safe and secure installation of child safety seats. (DuoPlus seat available in the accessories range).



4

6. FRONT HEADRESTS

The Renault SRP (System for Restraint and Protection) incorporates new generation headrests that offer maximum protection in the event of a rear impact.

7. EURO NCAP

Renault treats passenger safety as a priority. The Clio scores the maximum 5 stars in the adult occupant protection rating of Euro NCAP* crash tests.



5



6

*Euro NCAP (European New Car Assessment Programme) is an independent organisation.



7



6

NAVIGATION / COMFORT



1

1. LIVE SERVICES

Benefit in real time from high definition traffic information from TomTom® Live innovation and technology: mobile speed camera warnings*, searching for places of interest with Google Local Search, 5 day weather forecasts...



2

2. CARMINAT TOMTOM® LIVE

Carminat TomTom® LIVE is Renault's new onboard, connected navigation system. Still just as affordable and particularly simple, it brings together a complete range of high-performing functions. Its remote control provides intuitive, safe access to the various functions. Easy to use, the TomTom® Home application offers a large range of downloadable services.

3. NEW DYNAMIQUE FRONT SEATS

Travel in comfort and safety with the elegant and stylish new design Dynamique seats.

4. MULTI-FUNCTIONAL TUNEPPOINT

The multi-functional TunePoint allows you to connect your personal music player to the radio of your Clio. Use either the USB or jack to connect and control your personal MP3 player using the fingertip remote controls on the steering wheel.

5. BLUETOOTH CONNECTIVITY

The hands-free Bluetooth® adds to your safety and convenience by avoiding use of a hand-held mobile telephone whilst driving.



3



4



5

ACCESSORIES



1

PROTECTION AND COMFORT

Keep you and your Renault safe and sound

1. EXPRESSION MATS

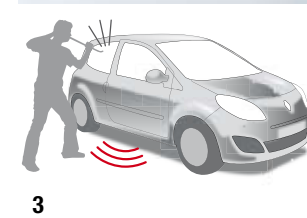
Mats are an essential accessory to protect your car from everyday dirt and debris. Designed to fit perfectly into your Renault, the inbuilt stud fixings ensure they fit safely with no slipping.



2

2. PARKING SENSORS

This clever system detects objects behind your vehicle as well as making parking in the smallest spaces so much easier. Ultrasonic sensors in the bumper emit a beep and as objects get closer, the sound becomes louder and more frequent.



3

3. ALARM

Fully compatible with the electronics in your Clio, the Thatcham-approved Renault alarm offers protection from attempted break-ins and detects any movement within the cabin.



4

4. BOOT LINER

This convenient boot liner protects your boot from day to day wear and tear. It is designed to fit perfectly into the boot of your Clio and is made from semi-rigid plastic so it can be easily washed down.



10

SPORT AND DESIGN

Make your Renault undeniably yours

5-6. SPORT STYLING PACK

Enhance the natural design of the car by adding a Sport Styling Pack which emphasises the stunning appearance. Includes front, side and rear skirts and false central exhaust.

7. LEATHER UPHOLSTERY

Transform your Clio with our range of eye-catching leather interiors. This luxurious accessory is a great way to give your new Clio a seductive blend of sporty elegance. Available in Biscotto, Rosso Red and Carbon Black.



5



6



7

TECHNOLOGY

Cutting edge technology in your Renault

8. BLUETOOTH CONNECTIVITY

The Parrot MKi9100 is a Bluetooth hands-free system with an OLED screen. A wireless remote control lets you control all functions. As well as conventional phone functions - like pick up, hang up, and dual calls - the Parrot MKi9100 boasts cutting-edge features like automatic phonebook synchronisation and multi-speaker voice recognition.

NB: Your hands-free system is only intended to make communicating easier by reducing the risk factors, but it can't remove them completely. We recommend you always pull over, even when using hands-free.

TOURING

You, your Renault and the kitchen sink!

9. QUICK RELEASE TOW BAR

Whether you need to pull a trailer, a caravan or simply mount one of our bike racks, Renault has the tow bar for you. This tow bar preserves the aesthetic lines of your Clio, thanks to a tow ball that can be removed in seconds without the use of tools.



8

10. ROOF BARS, SKI RACK, BIKE RACK

Whether you are planning a ski trip or just a day out with the bikes, we have an accessory for you. Designed to work in harmony with your car, these aluminium Touring Line roof bars are lightweight and easy to mount. Our bike racks can be mounted on the roof or on a tow bar. They are City Crash tested to ensure maximum safety and security.



9

TRIMS



EXPRESSION

Interior

- 'Soft touch' dashboard
- 'Sport' cloth upholstery
- Height adjustable driver's seat

Exterior

- 15" 'Taranis' wheel trims
- Electric and heated door mirrors



DYNAMIQUE

Dynamique TomTom

Interior

- Air conditioning
- Carminat TomTom
- 'Luxe' upholstery
- Leather steering wheel and gear stick
- Bluetooth connectivity with hands free system

Exterior

- 16" alloys
- 'Gunmetal' coloured door mirrors, handles and front bumper inserts
- Auto headlights and front windscreen wipers





GT LINE TOMTOM

Interior

As per Dynamique TomTom, plus:

- Climate control
- Multi-functional TunePoint (USB connection for MP3 players)

Exterior

- Rear spoiler (3 and 5 door only)
- Rear and tailgate tinted windows
- Rear parking sensors

EQUIPMENT

<p>COMFORT, DRIVING AND VERSATILITY</p> <ul style="list-style-type: none"> • Air recirculation • Headrests - standard driver and passenger • Multi-functional trip computer • Remote central locking key • Seats - standard driver's and front passenger • Steering wheel - height-adjustable • Variable assistance electric power steering • Windows - tinted • Windscreen wipers - front variable speed • Windscreen wipers - rear wash wipe 	<p>SAFETY AND SECURITY</p> <ul style="list-style-type: none"> • ABS with EBD (Electronic Brake Distribution) and brake assist • Airbags - anti-submerging • Airbags - driver and front passenger two stage auto-adaptive • Airbags - front lateral • Airbags - front passenger deactivation • Anti drill door locks and locking fuel cap • Deadlocking • Insurance approved engine immobiliser (Thatcham category 2) • ISOFIX child seat mounting points on front passenger seat (3 door only) and outer rear seats 	<ul style="list-style-type: none"> • R.A.I.D. (Renault Anti Intruder Device) • Seatbelts - two height adjustable 3-point front • Seatbelts - three 3-point rear • Tyre inflation kit
CORE FEATURES 3 DOOR AND 5 DOOR		
<p>EXPRESSION - ADDITIONAL STANDARD EQUIPMENT TO CORE FEATURES</p> <ul style="list-style-type: none"> • 15" 'Taranis' wheel trims (with sport front wings) • Door mirrors - body coloured • Door mirrors - electrically adjustable and heated with temperature sensor and driver's blind spot eliminating mirror • Exterior door handles - satin chrome • Front bumpers - body coloured with satin chrome lower insert 	<ul style="list-style-type: none"> • Front fog lights • Headlights - double optic with black surrounds • Headlights - See Me Home • Side protection mouldings - body-coloured with satin chrome tip • 4 x 20W RDS radio CD player with AUX input and fingertip remote control • Centre console - black with satin chrome dashboard inserts and air vent surrounds • Dashboard - soft touch 	<ul style="list-style-type: none"> • Headrests - two fixed front • Headrests - two rear height adjustable • Interior door handles - satin chrome • Seats - height adjustable driver's • Seats - rear - 60:40 split folding (single piece base) • Upholstery - 'Sport' cloth in charcoal with 3D design • Windows - electric front • Windows - manual rear (5 door only)
EXPRESSION		
<p>DYNAMIQUE TOMTOM - ADDITIONAL STANDARD EQUIPMENT TO EXPRESSION</p> <ul style="list-style-type: none"> • Alloy wheels - 16" 'Solonia' in gunmetal (with sport front wings) • Door mirrors - gunmetal • Exterior door handles - gunmetal • Front bumpers - body coloured, with gloss black central inserts and gunmetal lower insert • Side protection mouldings - body coloured with gunmetal tip 	<ul style="list-style-type: none"> • Airbags - front lateral curtain • Automatic headlights and automatic front windscreen wipers • Centre console, air vent surrounds and dashboard inserts - gloss black • Cruise control and speed limiter • Carminat TomTom® Live navigation system with remote control • Interior door handles - gloss black • Gearknob - leather • Headrests - two front height adjustable 	<ul style="list-style-type: none"> • Headrests - three rear height adjustable • Manual air conditioning • Steering wheel - leather • Upholstery - 'Luxe' upholstery in dark carbon • Windows - electric front with anti-pinch function and one touch control on driver's side • Bluetooth connectivity with hands free system
DYNAMIQUE TOMTOM		
<p>GT LINE TOMTOM - ADDITIONAL STANDARD EQUIPMENT TO DYNAMIQUE TOMTOM</p> <ul style="list-style-type: none"> • Body coloured 'GT Line' rear spoiler • Windows - extra tinted rear and tailgate • Rear parking sensors - body coloured 	<ul style="list-style-type: none"> • Automatic climate control • Door mirrors - electrically heated and folding with temperature sensor and driver's blind spot eliminating mirror • Windows - electric rear (5 door only) • Multi-functional TunePoint (USB connection for MP3 players) 	
GT LINE TOMTOM		
<p>COMFORT, DRIVING AND VERSATILITY</p> <ul style="list-style-type: none"> • Air recirculation • Headrests - standard driver and passenger • Multi-functional trip computer • Remote central locking key • Seats - standard driver's and front passenger • Seats - rear - 60:40 split folding (rear and base) • Steering wheel - height-adjustable • Variable assistance electric power steering • Windows - tinted • Windscreen wipers - front variable speed • Windscreen wipers - rear wash wipe 	<p>SAFETY AND SECURITY</p> <ul style="list-style-type: none"> • ABS with EBD (Electronic Brake Distribution) and brake assist • Airbags - anti-submerging • Airbags - driver and front passenger two stage auto-adaptive • Airbags - front lateral • Airbags - front passenger deactivation • Anti drill door locks and locking fuel cap • Deadlocking • Insurance approved engine immobiliser (Thatcham category 2) • ISOFIX child seat mounting points on outer rear seats • R.A.I.D. (Renault Anti Intruder Device) 	<ul style="list-style-type: none"> • Seatbelts - two height adjustable 3-point front • Seatbelts - three 3-point rear • Tyre inflation kit
CORE FEATURES SPORT TOURER		
<p>EXPRESSION - ADDITIONAL STANDARD EQUIPMENT TO CORE FEATURES</p> <ul style="list-style-type: none"> • 15" 'Taranis' wheel trims (with Sport front wings) • Door mirrors - body coloured • Door mirrors - electrically adjustable and heated with temperature sensor and driver's blind spot eliminating mirror • Exterior door handles - satin chrome • Front bumpers - body coloured with satin chrome lower insert 	<ul style="list-style-type: none"> • Front fog lights • Headlamps - double optic with black surrounds • Headlamps - See Me Home • Side protection mouldings - body coloured with satin chrome tip • Roof bars - satin chrome • 4 x 20W RDS radio CD player with AUX input and fingertip remote control • Centre console - black with satin chrome dashboard inserts and air vent surrounds 	<ul style="list-style-type: none"> • Dashboard - soft touch • Headrests - two fixed front • Headrests - two rear height adjustable • Interior door handles - satin chrome • Seats - height adjustable driver's • Upholstery - 'Sport' cloth in charcoal with 3D design • Windows - electric front • Windows - manual rear
EXPRESSION		
<p>DYNAMIQUE TOMTOM - ADDITIONAL STANDARD EQUIPMENT TO EXPRESSION</p> <ul style="list-style-type: none"> • Alloy wheels - 16" 'Solonia' in gunmetal (with Sport front wings) • Door mirrors - gunmetal • Exterior door handles - gunmetal • Front bumpers - body coloured, with gloss black central inserts and gunmetal lower insert • Side protection mouldings - body coloured with gunmetal tip • Airbags - front lateral curtain 	<ul style="list-style-type: none"> • Automatic headlights and automatic front windscreen wipers • Centre console, air vent surrounds and dashboard inserts - gloss black • Cruise control and speed limiter • Carminat TomTom® Live navigation system with remote control • Interior door handles - gloss black • Gearknob - leather • Headrests - two front height adjustable • Headrests - three rear height adjustable • Manual air conditioning 	<ul style="list-style-type: none"> • Steering wheel - leather • Upholstery - 'Luxe' upholstery in dark carbon with motif • Windows - electric front with anti-pinch function and one touch control on driver's side • Bluetooth connectivity with hands free system
DYNAMIQUE TOMTOM		
<p>GT LINE TOMTOM - ADDITIONAL STANDARD EQUIPMENT TO DYNAMIQUE TOMTOM</p> <ul style="list-style-type: none"> • Windows - extra tinted rear and tailgate • Rear parking sensors - body coloured 	<ul style="list-style-type: none"> • Automatic climate control • Door mirrors - electrically heated and folding with temperature sensor and driver's blind spot eliminating mirror • Windows - electric rear 	<ul style="list-style-type: none"> • Multi-functional TunePoint (USB connection for MP3 players)
GT LINE TOMTOM		

TECHNICAL SPECIFICATIONS

	RENAULT eco 1.2 16V 75	RENAULT eco 1.2 TCe 100	1.6 VVT 111 Auto	RENAULT eco dCi 88 FAP	RENAULT eco dCi 88 ECO*
Engine Type	Euro 5	Euro 5	Euro 5	Euro 5	Euro 5
ENGINE					
Induction capacity (cc)	1149	1149	1598	1461	1461
Bore x stroke	69 x 76.8	69 x 76.8	79.5 x 80.5	76 x 80.5	76 x 80.5
No of cylinders/valves	4 in line / 16	4 in line / 16	4 in line / 16	4 in line / 8	4 in line / 8
Compression ratio	9.8 : 1	9.8 : 1	9.8 : 1	17.9 : 1	17.9 : 1
Maximum power	55 (75) at 5500	76 (105) at 5500	82 (111) at 6000	65 (88) at 4000	65 (88) at 4000
Maximum torque	107 at 4250	155 at 3500	151 at 4250	200 at 1750	200 at 1750
Injection type	Multipoint Sequential	Multipoint Sequential	Multipoint Sequential	Direct Commonrail Injection	Direct Commonrail Injection
Fuel type	Unleaded Petrol	Unleaded Petrol	Unleaded Petrol	Diesel	Diesel
Catalytic converter	Standard	Standard	Standard	Standard	Standard
GEARBOX					
Type	JH3 128	JH3312	DP0 074	JR5 306	JR5 353
Number of forward gears	5	5	4	5	5
Vehicle speeds (mph) at 1000 rpm: in 1 st gear	4.17	5.13	5.32	5.55	9.92
in 2 nd gear	7.59	9.35	9.67	10.10	16.92
in 3 rd gear	11.15	14.48	14.49	15.66	26.21
in 4 th gear	15.09	19.79	20.39	22.11	37.02
in 5 th gear	18.93	25.92	-	30.03	50.28

STEERING	Variable Electric as Standard				
Power assisted					
Turning circle between kerbs/walls (m) (tyre width)	10.3/10.6 (165) - 10.7/11 (185) - 11.3/11.5 (195)				
Number of turns lock to lock (tyre width)	2.95 (185)	2.95 (185)	2.95 (185)	2.95 (185)	2.95 (185)
	2.84 (195)	2.84 (195)	2.84 (195)	2.84 (195)	2.84 (195)

SUSPENSION	MacPherson type with rectangular shaped lower arm and anti-roll bar / Renaultsport version : independent front suspension				
Front					
Rear	Torsion beam with programmed deflection - coil springs				

WHEELS / TYRES	5.5 J 15" Steel / 6 J 15" Steel or Alloy				
Wheels					
Tyres (15" wheels)	165/65 R15 81T	185/60 R15 84H	185/60 R15 88H	185/60 R15 84H	185/60 R15 84H
BRAKING SYSTEM					
ABS System Bosch 8.1	Standard	Standard	Standard	Standard	Standard
Electronic Brake Distribution (EBD)	Standard	Standard	Standard	Standard	Standard
ESP with Understeer Control	Option	Option	Option	Option	Not available
Servo: single (S) double (D) - Ø	(") S - 10"	S - 10"	S - 10"	S - 10"	S - 10"
Front: ventilated discs / width	(mm) 260 / 22	260 / 22	260 / 22	260 / 22	260 / 22
Rear: drum (T) / discs (DP) Ø - width	(mm) T-203 (standard) DP-240/8 if equipped with ESP	T-203 (standard) DP-240/8 if equipped with ESP	DP-240/8	T-203 (standard) DP-240/8 if equipped with ESP	T-203 (standard)

PERFORMANCE	(S/Cx)	0.705 to 0.735	0.705 to 0.735	0.715 to 0.745	0.720 to 0.745	0.650
Aerodynamics						
Maximum speed	mph (kph)	104 (167)	114 (184)	116 (186)	109 (176)	113 (182)
0- 62 mph (0-100 km/h)		13.4 / 13.6	11.0 / 11.2	12.2 / 12.4	11.0	11.0
400 m D.A.	(seconds)	18.7 / 18.8	17.5 / 17.6	18.2 / 18.3	18.1	18.1
1000 m D.A.	(seconds)	35.2 / 35.4	32.6 / 32.8	33.4 / 33.6	33.3	33.3

FUEL CONSUMPTION	mpg (litres/100km)	37.2 (7.6)	40.4 (7.0)	28.3 (10.0) / 26.7 (10.6)	57.7 (4.9)	65.7 (4.3)
Urban -						
Extra urban	mpg (litres/100km)	57.7 (4.9)	62.7 (4.5)	46.3 (6.1)	80.7 (3.5)	88.3 (3.2)
Combined	mpg (litres/100km)	48.7 (5.8)	52.3 (5.4)	36.2 (7.8)	70.6 (4.0)	78.5 (3.6)

EMISSIONS	(g/km)	135	125	179	106	94
CO ₂ emissions						
CO		269.1	361.2	380.0	298.1	270.7
HC		49.4	45.3	41.5	Unknown	17.9
NOx		28	24.6	28.6	155.4	171.9
HC + NOx		Unknown	Unknown	Unknown	178.6	189.8
Noise Level dB (A)		73.2	70.0	70.6	71.4	71.4
Particles		Unknown	Unknown	Unknown	0.090	0.360

FUEL TANK CAPACITY	gallons (litres)	12.1 (55)				
Fuel tank capacity						

WEIGHT	(kg)	1057 / 1064 / 1096	1062 / 1070 / 1125	1180 / 1190 / 1210	1165 / 1175 / 1195	1166 / 1175
Kerb weight (excluding driver)						
Front axle weight	(kg)	643 / 646 / 640	648 / 650 / 653	751 / 755 / 740	766 / 740 / 729	767 / 740
Rear axle weight	(kg)	414 / 418 / 456	414 / 420 / 472	429 / 435 / 470	429 / 435 / 466	430 / 435
Gross vehicle weight	(kg)	1570 / 1580 / 1598	1580 / 1588 / 1600	1665 / 1675 / 1705	1655 / 1665 / 1690	1656 / 1665
Gross train weight	(kg)	2500	2500	2600	2550 / 2600	2550
Maximum towing weight braked - driver only	(kg)	1200	1200	1200	1200	1200
Maximum towing weight unbraked - driver only	(kg)	535	535	535	535	535

Where two figures are shown divided by a /, first figure = 3 & 5 door, second figure = Sport Tourer
Where three figures are shown divided by a /, first figure = 3 door, second figure = 5 door, third figure = Sport Tourer
* Only on 3 door and 5 door Expression



Clio **eco** meets three criteria:

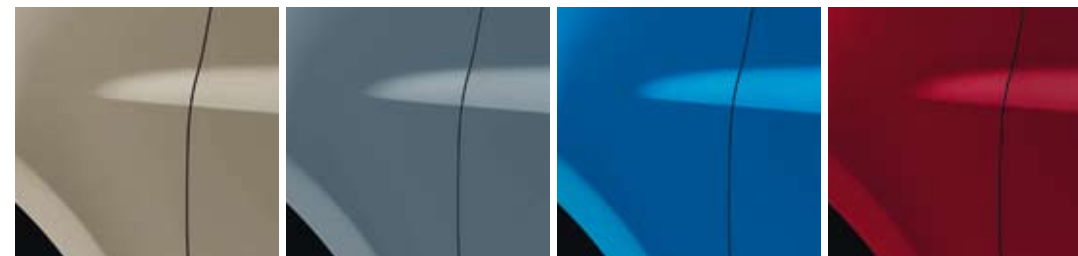
- it is manufactured in an ISO 14001 certified factory, minimising its environmental impact,
- the vehicle produces CO₂ emissions lower than 120 g/km,
- and it includes at least 7% recycled plastic in its plastic mass, and has been designed in such a way that 85% of the materials used could have a second life (recyclable for other use or as a source of energy).

With **eco**, Renault displays its environmental commitment at every stage of the vehicle's life.

COLOURS



GLACIER WHITE (NM 369) CAPSICUM RED (NM 727) PEARL BLACK (MP 676) MERCURY (MI D69) OYSTER GREY (MI KNG)



STONE (MI HNK) TEMPEST (MI J47) EXTREME BLUE (MI RNA) RUBY RED (MI NNJ)

NM = Non-Metallic Supergloss MP = Metallic Pearlescent MI = Metallic Illusion

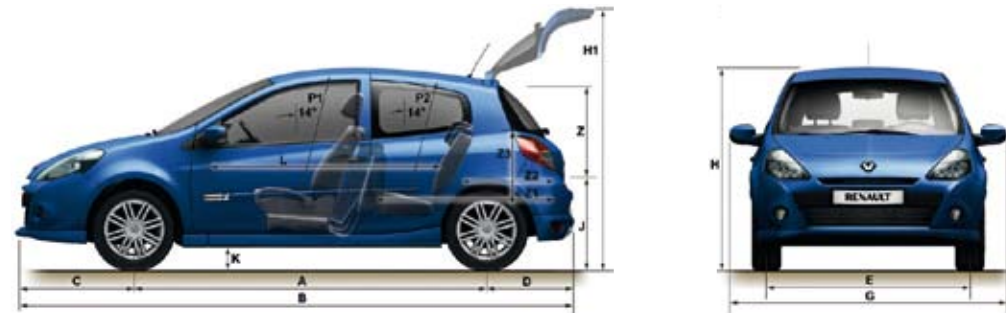
	369 Glacier White (NM)	727 Capsicum Red (NM)	676 Pearl Black (MP)	D69 Mercury (MI)	KNG Oyster Grey (MI)	HNK Stone (MI)	J47 Tempest (MI)	RNA Extreme Blue (MI)	NNJ Ruby Red (MI)
EXPRESSION	●	●	○	○	○	○	○	○	○
DYNAMIQUE TOMTOM	●	●	○	○	○	○	○	○	○
GT LINE TOMTOM	●	●	○	○	○	○	○	○	○

● = Standard ○ = Optional - = Not available

NM = Non-metallic Supergloss MP = Metallic Pearlescent MI = Metallic Illusion

It should be noted that printing limitations do not permit the subtle paintwork shades on these pages to be shown with absolute accuracy. Only personal inspection of the Clio at your Renault Dealer will reveal it in its true colours. From time to time changes are made to the colour range. Please check availability with your Renault Dealer.

DIMENSIONS 3 AND 5 DOORS



BOOT VOLUME	3 DOOR	5 DOOR	EXTERIOR DIMENSIONS (MM)	3 DOOR	5 DOOR
Volume of boot space under parcel shelf with seats up (litres)	288		K Ground clearance front unladen	108	
Maximum boot space with rear seats folded down (litres)	1038		K Ground clearance rear unladen	74	
EXTERIOR DIMENSIONS (MM)			L Maximum cabin length	1677	
A Wheelbase	2575		M Front elbow width	1400	
B Overall bodywork length	4032		M1 Rear elbow width	1412	1395
C Front overhang	835		N Front shoulder width	1382	
D Rear overhang	621		N1 Rear shoulder width	1362	1343
E Front track width - tyres 165	1472		P1 Front headroom measured at 14° with no sunroof	907	
E Front track width - tyres 185	1658		P2 Front headroom measured at 14° with sunroof	861	
F Front track width - tyres 165	1471		Y Upper boot entry width	848	
F Front track width - tyres 185	1460		Y1 Lower boot entry width	894	
G Overall width excluding door mirrors with side rubbing strips - tyres 165 / 185	1720		Y2 Interior width between wheel arches	1034	
G Overall width with door mirrors unfolded	2025		Z Rear entry height	657	
H Overall unladen height (including roof bars on Sport Tourer)	1497		Z1 Maximum load platform length from behind rear seats	Undisclosed	
H1 Overall unladen height with tailgate open	2003		Z1 Maximum load platform length with rear seats folded down	1300	
J Unladen sill height	687.5		Z2 Height under rear parcel shelf: from the boot space floor to the top of the parcel shelf	541	

DIMENSIONS SPORT TOURER



BOOT VOLUME	SPORT TOURER	EXTERIOR DIMENSIONS (MM)	SPORT TOURER	EXTERIOR DIMENSIONS (MM)	SPORT TOURER
Volume of boot space under parcel shelf with seats up (litres)	439	G Overall width excluding door mirrors with side rubbing strips - tyres 165 / 185	1707	N Front shoulder width	1380
Maximum boot space with rear seats folded down (litres)	1277	G Overall width with door mirrors unfolded	2025	N1 Rear shoulder width	1343
EXTERIOR DIMENSIONS (MM)		H Overall unladen height (including roof bars on Sport Tourer)	1513	P1 Front headroom measured at 14° with no sunroof	907
A Wheelbase	2575	H1 Overall unladen height with tailgate open	N/A	P2 Front headroom measured at 14° with sunroof	861
B Overall bodywork length	4233	J Unladen sill height	577	Y Upper boot entry width	848
C Front overhang	835	K Ground clearance front unladen	108	Y1 Lower boot entry width	894
D Rear overhang	823	K Ground clearance rear unladen	74	Y2 Interior width between wheel arches	1020
E Front track width - tyres 165	1472	L Maximum cabin length	1677	Z Rear entry height	770
E Front track width - tyres 185	1458	M Front elbow width	1402	Z1 Maximum load platform length from behind rear seats	809
F Front track width - tyres 165	1471	M1 Rear elbow width	1390	Z1 Maximum load platform length with rear seats folded down	1453
F Front track width - tyres 185	1460			Z2 Height under rear parcel shelf: from the boot space floor to the top of the parcel shelf	600

WHEELS



1

1. 15" 'TARANIS' WHEEL TRIMS



2



3

2. 15" 'DEL ARTE' ALLOY WHEELS

3. 16" 'SOLONIA' ALLOY WHEELS IN GUNMETAL

	EXPRESSION	DYNAMIQUE TOMTOM	GT LINE TOMTOM
15" 'Taranis' wheel trim	●	-	-
15" 'Del Arte' alloy wheel	○	-	-
16" 'Solonia' alloy wheels in gunmetal	-	●	●

EQUIPMENT AND OPTIONS

	EXPRESSION	DYNAMIQUE TOMTOM	GT LINE TOMTOM
EXTERIOR FEATURES			
15" 'Taranis' wheel trims	●	-	-
15" 'Del Arte' alloy wheels (not available with Expression ECO PACK)	○	-	-
16" 'Solonia' alloy wheels in gunmetal	-	●	●
Bumpers - front and rear - body coloured	●	●	●
Front bumper inserts - gloss black	-	●	●
Lower front bumper insert - satin chrome	●	-	-
Lower front bumper insert - gunmetal	-	●	●
Door mirrors - body coloured	●	-	-
Door mirrors - gunmetal	-	●	●
Exterior door handles - satin chrome	●	-	-
Exterior door handles - gunmetal	-	●	●
Metallic paint	○	○	○
Roof bars - satin chrome (Sport Tourer only)	●	●	●
Rear spoiler - body-coloured 'GT Line' (3- and 5- door only)	-	-	●
Side mouldings - body coloured, with satin chrome tip	●	-	-
Side mouldings - body coloured, with gunmetal tip	-	●	●
Windows - tinted	●	●	●
Windows - extra-tinted rear and tailgate	○	○	●
INTERIOR FEATURES			
Centre console - black with satin chrome dashboard inserts and air vent surrounds	●	-	-
Centre console - gloss black, with gloss black dashboard inserts and air vent surrounds	-	●	●
Dashboard - soft touch	●	●	●
Gearknob - leather	-	●	●
Steering wheel - leather	-	●	●
Rev counter and speedometer - white figures on black background with red needles	●	●	●
Dial surrounds - satin chrome	●	●	●
Interior door handles - satin chrome	●	-	-
Interior door grab handles - gloss black	-	●	●
SAFETY			
ABS with EBD (Electronic Brake Distribution) and brake assist	●	●	●
ESC (Electronic Stability Control) with understeer control	○	○	○
Driver and front passenger auto-adaptive airbags	●	●	●
Front lateral airbags	●	●	●
Front lateral curtain airbags	○	●	●
Anti-submarining airbags	●	●	●
Height adjustable three point front seatbelts	●	●	●
Standard fixed driver and passenger headrests	●	-	-
New generation height adjustable SRP (System for Restraint and Protection) front headrests	-	●	●
Two height adjustable rear headrests with two pre-set positions	●	-	-
Three height adjustable rear headrests with two pre-set positions	-	●	●
Additional rear brake light	●	●	●
CHILD SAFETY			
ISOFIX points on front passenger seat (3 door only) and outer rear seats	●	●	●
Deactivation of front passenger airbag	●	●	●
SECURITY			
Deadlocking and engine immobiliser	●	●	●
Remote central locking	●	●	●
R.A.I.D. (Renault Anti Intruder Device)	●	●	●
Anti drill door locks and locking fuel cap	●	●	●
DRIVING AND CONTROLS			
Variable assistance electric power steering	●	●	●
Multi-functional trip computer	●	●	●
Cruise control and speed limiter (standard on Expression automatic)	-	●	●
Exterior temperature display	●	●	●
Rear parking proximity sensors (body coloured)	-	○	●
Puncture repair spray (in lieu of emergency spare wheel)	●	●	●
Emergency spare wheel	○	○	○

	EXPRESSION	DYNAMIQUE TOMTOM	GT LINE TOMTOM
VISIBILITY AND EXTERIOR LIGHTING			
Door mirrors - electrically heated and adjustable with temperature sensor and driver's blind spot eliminating mirror	●	●	-
Door mirrors - electrically heated, adjustable and folding with temperature sensor and driver's blind spot eliminating mirror	-	-	●
Automatic headlights and automatic front windscreen wipers	-	●	●
Variable speed front windscreen wipers	●	●	●
Standard rear wiper	●	-	-
Smart rear wiper	-	●	●
Double optic headlights with black surrounds	●	●	●
Internally height adjustable headlights	●	●	●
Front fog lights	●	●	●
Fixed cornering lights with black surrounds	-	○	○
'See Me Home' headlights	●	●	●
HEATING AND VENTILATION			
Air recirculation	●	-	-
Manual air conditioning (standard on Expression 1.6 VWT 111 Auto A/C)	○	●	-
Automatic climate control	-	○	●
COMFORT AND CONVENIENCE			
Remote central locking key	●	●	●
Height adjustable steering wheel	●	●	●
Front passenger grab handle	●	●	●
Front and rear passenger grab handles (5 door and Sport Tourer only)	-	●	●
Electric front windows	●	-	-
Electric front windows with anti-pinch function and one touch control on the driver's side	-	●	●
Manual rear windows (5 door and Sport Tourer only)	●	●	-
Electric rear windows (5 door and Sport Tourer only)	-	-	●
Electronic panoramic sunroof with integrated sunblind	○	○	○
SEATS AND UPHOLSTERY			
Standard driver and front passenger seat	●	●	●
Upholstery - 'Sport' cloth upholstery in black and grey with 3D design	●	-	-
Upholstery - 'Luxe' upholstery in dark carbon with motif	-	●	●
Height adjustment of driver's seat	●	●	●
60:40 split folding rear seat (single piece base)	●	●	●
60:40 split folding rear seat (and folding base)	● (Sport Tourer only)	● (Sport Tourer only)	● (Sport Tourer only)
STORAGE			
Storage pocket behind driver's seat	-	●	●
Boot luggage net (Sport Tourer only)	○	○	○
COMMUNICATION AND CONNECTIVITY			
4 x 20W radio CD MP3 reader with fingertip remote control 4 speakers including 2 dual cone (including RCA socket in front of the gear lever)	●	●	●
Multi-functional TunePoint (USB connection for MP3 players)	-	○	●
Integrated Bluetooth hands-free system	-	●	●
Parrot MKi9100 - Bluetooth hands free system	○ (A)	○ (A)	○ (A)
Carminat TomTom Live Navigation system (large 5.8-inch [14.7 cm] colour screen integrated in the dashboard with 1 remote control and 1 SD card including United Kingdom and Republic of Ireland map coverage)	○	●	●
Carminat TomTom® Western Europe map upgrade (requires Carminat TomTom to be fitted)	○	○	○
OPTION PACKS			
EXPRESSION ECO PACK (3- and 5- DOOR ONLY)	○	-	-

● = Standard ○ = Optional - = Not available

A = Accessory

RENAULT CLIO



(Enter Renault's world at Sky Guide 883 and www.renault.tv)

Although every effort has been made to ensure that the information contained within this brochure is as accurate and up to date as possible, Renault U.K. reserves the right to modify its models without notice, including their characteristics, specifications, equipment and accessories. Brochures inevitably become out of date or inaccurate in some respects, in that such characteristics, specifications, equipment, or accessories may be changed after the publication date given below and can differ from the descriptions given. It is therefore necessary to check with your Renault Dealer before purchasing any product that the characteristics, specifications, equipment or accessories of the vehicle on order are as advertised. Publication date July 2011.