



Das Auto.

The Scirocco

Volkswagen Information Service. Telephone 0800 333 666
Internet: www.volkswagen.co.uk
© Volkswagen Group United Kingdom Limited 2011.
Issue: 1 January 2011. Printed in UK.
PVW287NSF

The Scirocco



See the world from a different perspective.

- 04 The Scirocco and Scirocco BlueMotion Technology
- 14 Design
- 16 Equipment
- 18 The Scirocco and Scirocco BlueMotion Technology
- 20 The Scirocco GT and GT BlueMotion Technology
- 22 The Scirocco R
- 26 BlueMotion Technology
- 28 Engines and gearboxes
- 30 Safety
- 32 Optional equipment
- 36 Paint
- 40 Upholstery
- 41 Combinations
- 42 Technical specification
- 44 Technology
- 46 Volkswagen service



Are you ready to fall under the Scirocco's spell?

Prepare to be captivated. Because from the minute you first see the Scirocco, this outstanding car will weave its magic. With its streamlined bodyshape, dynamic handling, sports chassis and luxurious interior, this is a true sports performer that delivers everything you could ask for, right down to the affordable price. Step inside and feel your pulse start racing, take to the road and you won't want to stop. Because when you put the Scirocco through its paces, the driving pleasure just goes on and on.

Let the journey begin.



Model shown is Scirocco GT with optional panoramic sunroof and Winter pack.

Once started, there's no stopping you.



Model shown is Scirocco GT with optional panoramic sunroof.

Run from the mundane.



Model shown is Scirocco GT 2.0 TSI 210 PS.



Exhilaration at your fingertips.

Model shown is Scirocco GT 2.0 TSI 210 PS.

Design

With its streamlined bodyshape and flowing contours, the Scirocco exudes style, while dynamic details such as the curved design of the halogen clear headlights, enhances its sporting character. Naturally, first class workmanship and high quality materials throughout go without saying.



The **chrome twin exhaust tailpipe** adds charisma and presence, hinting at the power beneath the bonnet.

GT 2.0 TSI 210 PS only.



The front of the Scirocco immediately attracts attention, with its sleek bonnet and striking **honeycomb front air intake**. Together with a **high gloss black radiator grille**, they create a stunning overall effect, reinforced by the Volkswagen roundel fitted flush to the bonnet, accentuating the flowing bodylines. Front fog lights standard on GT, GT BlueMotion Technology and optional on Scirocco and Scirocco BlueMotion Technology models. Winter pack is standard on R and optional on all other models.

Model shown is GT.
Please note, Winter pack on R models does not include heated windscreen washer jets.



The Scirocco is a pleasure to drive as it is. But with its distinctive **18 inch 'Interlagos' alloy wheels** with 235/40 R18 self-sealing tyres, it creates an even sportier and individual look. It is made exclusively as a one-piece cast aluminium wheel, which lowers the weight while ensuring greater suspension responsiveness. Standard on GT, GT BlueMotion Technology and optional on Scirocco and Scirocco BlueMotion Technology models.



Darkened rear side and rear windows reduce the amount of sunlight entering the cabin by up to 65% from the B pillar back, contributing to a pleasant interior temperature and enhancing the sports appeal of the Scirocco. Standard on GT, GT BlueMotion Technology and R and optional on Scirocco and Scirocco BlueMotion Technology models.



17 inch 'Donington' alloy wheels with 235/45 R17 self-sealing tyres create a sporty and stylish look for your Scirocco. Standard on Scirocco and Scirocco BlueMotion Technology models.



The distinctive **rear light clusters** blend perfectly with the lines of the Scirocco, complementing its striking design. Its powerful profile is further accentuated by the horizontal, flat surface of the lights, with their dynamic contours.



The sleek shaped **body-coloured door handles** complement the Scirocco's sleek profile.



Body-coloured door mirrors with integrated indicators contribute to the streamlined, sporty look.

A world of experience awaits you.



Model shown is Scirocco with optional front fog lights, panoramic sunroof and Winter pack.

The Scirocco and Scirocco BlueMotion Technology

As you'd expect with a luxury sports coupé, the Scirocco offers a high level of specification, with many advanced features fitted as standard, ensuring interior driving comfort that is second to none.



The RCD 510 touch-screen radio/dash-mounted MP3 compatible six CD autochanger features a large 6½ inch colour display, with intuitive menu navigation and touch-screen operation. It also features an AUX-in socket for connection to an external multimedia source (e.g. iPod or MP3 player) and an SD memory card slot.



'Donington' 7½ x 17 alloy wheels with 235/45 R17 self-sealing tyres and anti-theft wheel bolts enhance the look of the Scirocco leaving a lasting impression.



Adaptive Chassis Control (ACC) allows you to select Normal, Comfort or Sport settings for your journey, enabling the electrically regulated dampers and steering to adapt optimally to conditions and driving style. Optional on Scirocco 1.4 litre TSI 122 PS and standard on all other models.



The Multi Device Interface (MDI) with iPod and USB cables enables you to connect and charge a compatible device, while track selection is viewed and selected via the vehicle's radio system. Interior shown features optional 'Vienna' leather upholstery.

Some parts of leather interior contain artificial leather.



The unique BlueMotion Technology badging displays the environmental credentials of the Scirocco BlueMotion Technology and makes it instantly recognisable. For more information on BlueMotion Technologies, please see pages 26-27.



'Climatic' semi-automatic air conditioning system is extremely user-friendly, providing your required cabin temperature quickly and efficiently, while maintaining your selected temperature.



The luxurious interior combines ergonomics with visual appeal and practicality. Front sports seats provide maximum support when cornering, while the leather-trimmed three-spoke steering wheel, gear knob and handbrake grip offer optimum grip, an essential requirement for such an agile performer. Stylish matt chrome decorative inserts provide the perfect finishing touch to the distinctive interior design.

Interior shown is Scirocco 1.4 litre TSI 160 PS.



The **sporty interior** provides a dynamic environment with added comfort and convenience. **2Zone electronic climate control** allows the driver and front seat passenger to select their own individual temperature settings, while controls of the audio system and **multifunction computer (Highline)** can be selected via the **multifunction leather trimmed steering wheel**. A Black rooflining is also fitted to Scirocco GT 2.0 TSI 210 PS models, replacing the standard grey rooflining, ensuring an ever sportier feel. Interior shown is Scirocco GT 2.0 TSI 210 PS DSG with optional RNS 510 DVD touch-screen navigation/radio system.



The **chrome twin exhaust tailpipe** that features on the GT 2.0 TSI 210 PS adds charisma and presence.



Front fog lights add a striking look to the front of the vehicle, and also provide additional safety.



'**Interlagos**' 8J x 18 alloy wheels with 235/40 R18 self-sealing tyres and anti-theft wheel bolts confirm a true pedigree sports performer.

The Scirocco GT and GT BlueMotion Technology

The GT builds over the already high specification of the Scirocco and adds some additional styling to the exterior that undoubtedly makes the GT stand out from the crowd. Inside, a higher level of specification and equipment ensures that every journey is made even more enjoyable.



The **multifunction computer (Highline)** can be operated easily via the multifunction steering wheel, providing useful information such as average and current fuel consumption, journey time, outside temperature and range left in the fuel tank. Choose the manual version of the 2.0 litre TSI 210 PS or a BlueMotion Technology model, and the multifunction computer includes visual gear change recommendation for optimum fuel consumption.



Specify a DSG gearbox and the leather trimmed multifunction steering wheel features **paddle shift** as standard, to allow quick gear changes without taking your hands off the steering wheel.



The **2Zone electronic climate control with automatic air recirculation**, courtesy of an air quality sensor, provides temperature controls that can be individually adjusted by the driver and front passenger, enabling them to set their own desired temperature. The system ensures all passengers enjoy a comfortable journey and the temperature selected is displayed accurately, within half a degree Celsius.

The Scirocco R.



Model shown is Scirocco R with optional 19" 'Talladega' alloy wheels and metallic paint.

The Scirocco R

There's really only one word to describe the Scirocco R. Fast. A combination of the latest engine technology, lowered sports suspension and aerodynamic styling ensures this is the fastest ever Scirocco. If the exterior styling gives you a hint of what is to come, the unique interior adds to the anticipation. But nothing prepares you for the drive itself. That is something you have to experience.

Its glossy black grille and front air intake in the uniquely shaped bumper give the Scirocco R its distinctive appearance, and the chrome 'R' badge hints at the power lurking beneath the bonnet. The XDS electronic differential lock improves traction and helps keep the 18 inch 'Talladega' alloys firmly on the road, while the brake calipers are painted in 'Gloss Black' and are adorned with the exclusive 'R' logo. Body-coloured widened side skirts not only enhance the Scirocco's aerodynamics, but also accentuate its unique 'R' sports suspension lowered by approx. 10 mm, and chrome exhaust tailpipes are integrated either side of the 'Gloss Black' rear diffuser beneath the uniquely designed rear bumper. Darkened 'Cherry red' rear light clusters and 'Gloss Black' door mirrors convey added sporting prowess and Bi-Xenon headlights offer the a driver clearer vision of the road ahead. Separate daytime running lights, set into the front bumper, utilise LED technology to ensure your vehicle is also visible to other road users in any weather.



'Talladega' 8J x 18 alloy wheels with 235/40 R18 self-sealing tyres ensure maximum grip, while 'Gloss Black' brake calipers enhance the sporty appearance.



Neatly integrated into either side of the 'Gloss Black' rear diffuser, the **chrome exhaust tailpipes** hint at the power beneath the bonnet, visually emphasising the excellent roadholding of the Scirocco R.

Exterior shown features optional parking sensors.



Clear white instrument lighting with atmospheric illumination and **blue needles** on all dials hint at the Scirocco R's sporting intent. The multifunction computer (Highline) can be operated easily via the multifunction steering wheel, providing the driver with essential information.



LED daytime running lights give a purposeful edge to the Scirocco R, while Bi-Xenon headlights with headlight washers ensure a clear view of the road ahead.



The **Scirocco R's unique interior** features an abundance of the finest quality materials, all finished to the highest standards of craftsmanship. Contemporary 'Kyalami' upholstery in Titan Black with 'San Remo' alcantara side bolsters in Crystal Grey add a sporty, elegant look to the front heated sports seats. Other details include the 'R' logo on the front head restraints, front and rear carpet mats and a luxurious leather trimmed multifunction steering wheel featuring 'Gloss Black' inserts, 'R' logo and contrast stitching. 'R' branded aluminium-look pedals, kick plates and gear knob combine with 'Silver Lane' decorative inserts to give the passenger compartment a real sports identity, making any journey one of pure, unadulterated fun.



To help reduce the impact on our environment, not only have we come up with a solution, we've designed many.

BlueMotion Technologies is our contribution to sustainable motoring. This means we offer optimum solutions for every demand, which make driving more fuel efficient and cleaner. BlueMotion Technologies are less harmful to our environment and your wallet, without having to give up everyday practicality and comfort.

The BlueMotion Technology Sciroccos, available with a 2.0 litre TDI 140 PS engine, offer the same refinement and comfort as the standard Scirocco and Scirocco GT, but with added environmental credentials. They meet the proposed Euro 5 emissions standard, have a Diesel Particulate Filter (DPF) and are packed full of technologies to save valuable fuel and have a smaller impact on our environment. Technologies such as the Start/Stop function which saves fuel when the vehicle is stationary, just put the handbrake on, the gearbox in neutral and the engine turns itself off. Put it back into gear and the engine restarts immediately and automatically, reducing consumption and CO₂ emissions. When the multifunction computer (Highline) displays the Start/Stop symbol, you know it is active. It will also display visual gear change recommendations, advising the best time to change gear for optimum fuel consumption. All Scirocco BlueMotion Technology models are also fitted with a battery regeneration (recuperation) system, meaning that energy is recovered from the braking process and used to charge the battery, rather than using fuel for this process.



A multifunction computer (Highline) with visual gear change recommendation for optimum fuel consumption – indicates when you should change gears to drive more economically.

Interior shown is Scirocco GT 2.0 TDI DSG BlueMotion Technology.



The BlueMotion Technology badge at the rear. A short message to the people driving behind you that thrift and the finer things in life are not mutually exclusive.



Specify a DSG gearbox and the leather trimmed multifunction steering wheel features **paddle shift** as standard, to allow quick gear changes without taking your hands off the steering wheel.



The fully synchronised **six speed manual gearbox** is easy to use, giving you total control.

Interior shown is GT.



The **2.0 litre TSI 265 PS** is a perfect example of TSI technology. Direct injection, downsizing and sophisticated turbocharging technology combine to produce the most powerful TSI engine ever to power the Scirocco. This engine also benefits from TSI characteristics such as excellent torque, impressive fuel consumption and reduced emissions compared to previous range-topping Volkswagens.



Hi-tech petrol engines feature innovative **TSI technology**, which utilises a combination of downsizing, direct injection and turbocharging to produce impressive torque and power output, alongside low fuel consumption.



The **TDI diesel engines** use common rail technology and allied with BlueMotion Technologies, can help lower CO₂ emissions and offer better fuel economy. For more information on BlueMotion Technologies, please see pages 26-27.



The six or seven speed **DSG gearboxes** offer a genuine alternative to a manual gearbox because they are able to change gear faster than a manual gearbox and more smoothly than a conventional automatic.

Interior shown is GT.

Engines and gearboxes

Whichever engine or gearbox combination you select for your Scirocco, you can be sure of outstanding performance, excellent torque and efficient fuel consumption. That's because advanced Volkswagen engine technology delivers phenomenal results, whatever the length of your journey – long distance or a quick spin, whether you opt for a petrol or diesel variant. The Scirocco features a hill hold function which prevents your Scirocco from rolling back when pulling away or during a hill start, making every journey just that little bit easier.

The Scirocco R features XDS, an extension of the well-known electronic differential lock (EDL) function. This is linked to the Electronic Stabilisation Programme (ESP) hydraulics and works by applying pressure to the inner front wheel during fast cornering to prevent spinning. The one-sided, precise brake pressure helps to maximise traction, reduce understeer and improve responses, thus making cornering even more sporty, safe and accurate.



The **Adaptive Chassis Control (ACC)** adapts the damping control and shock absorption rate to the road conditions and driving style you require within milliseconds. At the touch of a button, you decide how firm or comfortable you wish to set the suspension, with a choice of three settings: Normal, Comfort or Sport. In Normal mode, the principal advantage of the system is that the dampers are constantly adjusted to the road and the driving conditions. In Sport mode, the dampers are considerably stiffer and the steering becomes more responsive. A direct contrast is Comfort mode where the suspension is adjusted to maximise passenger comfort, particularly when travelling on poor road surfaces or long motorway journeys. Optional on Scirocco 1.4 litre TSI 122 PS and standard on all other models.

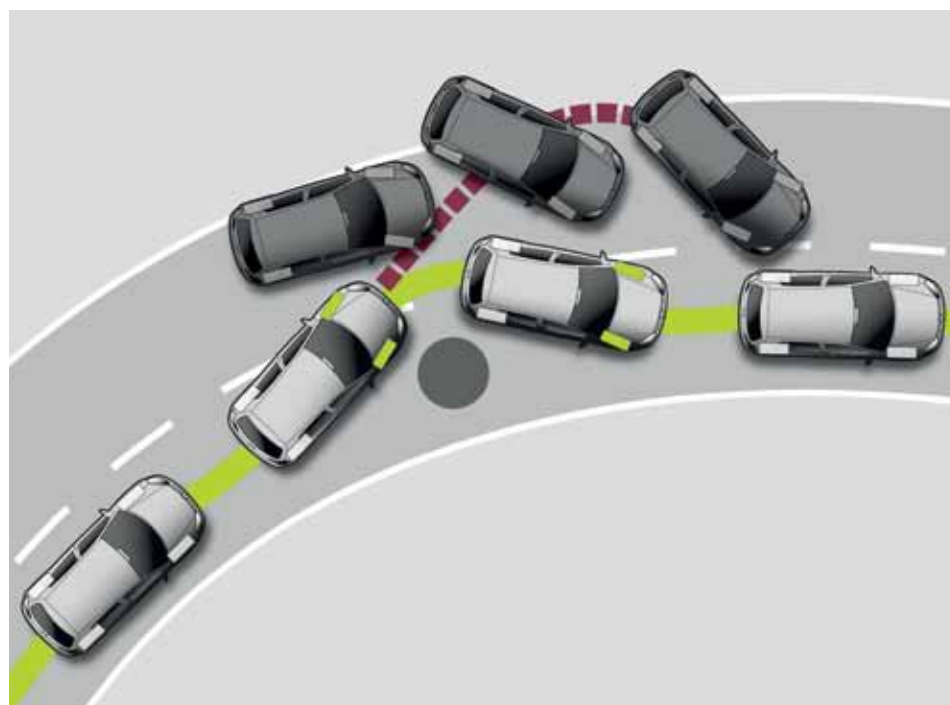
Image shown is for illustration purposes only and may not necessarily reflect UK specification.

Safety

Naturally, as a sports coupé, the Scirocco offers impressive power and performance. But it also offers intelligence too, as demonstrated by its first class safety specification, designed to help you manage such occurrences as bad weather, sharp bends and tight parking spaces.



Disc brakes front and rear, (front ventilated), ensure exceptional thermal performance, even when the temperature of the brakes rises to extreme levels.

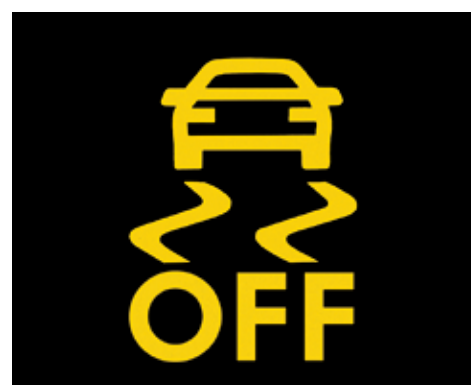


Front fog lights improve the illumination of the road ahead in bad visibility conditions, such as fog, snow, or driving rain, and are an important element of the Scirocco's safety specification. Standard on GT, GT BlueMotion Technology and optional on Scirocco and Scirocco BlueMotion Technology models.



An **extensive airbag system** offers protection to all passengers in the Scirocco in the event of an emergency situation. The system comprises airbags for front passengers, curtain airbags for front and rear passengers, with front seat side impact airbags providing additional lateral protection for the driver and front seat passenger. There is also a passenger's airbag deactivation switch on the front passenger side. Deployment of the airbags is managed via crash sensors: if an impact is registered, the gas generator ignites, which then fills the airbag within 30 to 40 milliseconds.

Image shown is for illustration purposes only and may not necessarily reflect UK specification.



The sensor-controlled **Electronic Stabilisation Programme (ESP)** recognises critical driving situations and reacts in milliseconds by controlling the speed of individual wheels, helping to bring the vehicle under control.



In the event of a change in tyre pressure, the **flat tyre indicator** symbol appears in the multifunction display, advising the driver to rectify the situation. Standard on all models.



The Scirocco's **safety systems** comply with the highest safety standards and have been extensively tested to ensure they provide maximum protection in all situations.



Rear parking sensors help you park your Scirocco with the greatest of ease, aided by an audible warning and a visual display via the RCD 510 radio system's display. Optional on all models.



The RNS 510 DVD touch-screen navigation/radio system with integrated voice control will guide you to your destination using all but the last two digits of a UK postcode and includes a 6½" colour display, perspective (bird's-eye) view and touch-screen operation. This state-of-the-art system responds to spoken voice commands for navigation, CD and radio functions. It also plays videos (when the vehicle is stationary) and music from the DVD drive, 30 GB hard drive or via the MDI (Multi Device Interface) or AUX-in socket. Optional on all models.



In addition to your RNS 510 DVD touch-screen navigation/radio system you can also specify an armrest-mounted six CD autochanger, in lieu of MDI (Multi Device Interface), allowing you hours of uninterrupted listening pleasure. Optional on all models.



Another addition to improve your journey's soundtrack is the 'Dynaudio' sound system incorporating an eight channel digital amplifier. It provides impressive acoustics and the highest levels of audio pleasure, delivering 300 watts through eight high performance speakers. Optional on all models.



The RNS 315 touch-screen navigation/radio system with MP3 compatible CD player features a 5 inch colour display with clearly arranged map navigation, which uses all but the last two digits of a UK postcode to guide you to your destination. Also featured is an SD card reader and practical AUX-in socket for connecting external audio devices such as an MP3 player. Optional on all models.



For relaxed motorway driving, **cruise control** is the perfect answer. Operational at speeds above approximately 20 mph, the system can be set to maintain a constant speed. Optional on all models.

Optional equipment

Practical extras can be an extremely useful way of creating exactly the Scirocco you desire. With this in mind, a selection of different options are available, each one ensuring your Scirocco meets your individual requirements. This reflection of your personality and lifestyle makes the Scirocco more irresistible than ever. So, why fight the temptation?



The **multifunction steering wheel**, in sumptuous leather finish, enables you to control the radio and multifunction computer (Highline) without taking your hands off the wheel, thanks to the intuitively positioned buttons. On DSG models the multifunction steering wheel also features paddle shift, allowing manual gear changes from the steering wheel. Standard on GT, GT BlueMotion Technology and R, and optional on Scirocco and Scirocco BlueMotion Technology models. Also operated via the multifunction steering wheel is the optional **telephone preparation*** for Bluetooth HFP (Hands Free Profile) enabled telephones. This allows safe and easy use of your telephone via controls on the steering wheel and the vehicle's audio system. Optional on all models. Interior shown features optional RNS 510 DVD touch-screen navigation/radio system and 2Zone electronic climate control.

* Phones must be compatible with HFP (Hands Free Profile), please contact your retailer for phone compatibility.



The **optional multifunction computer colour display** shows such information as average speed, fuel consumption, driving time, fuel range and whether the doors are open and enables you to choose the language you require. Optional on all models.



The **2Zone electronic climate control** maintains a constant preset temperature, providing separately controllable air conditioning for the driver and front passenger, practically without a draught. The automatic air recirculation mode also ensures that passengers are protected from any unpleasant odours. Standard on GT, GT BlueMotion Technology and R, and optional on Scirocco and Scirocco BlueMotion Technology models. Heated front seats form part of the **Winter pack**, which also includes headlight washers, heated windscreen washer jets and low washer fluid warning light. Standard on R and optional on all other models.

Please note, Winter pack on R models does not include heated windscreen washer jets.



Luxurious 'Vienna' leather upholstery in Black, Truffle or 'Exclusive' two-tone Cornsilk Beige/Black includes black rooflining and heated front sports seats which provide optimum lateral support on tight bends ensuring maximum driving fun. The electrically-adjustable driver's seat lumbar support will ensure the best possible seating position on every journey. Also available as an option for the R model are sumptuous and sporty 'Recaro' sports seats upholstered in 'Vienna' leather with 'San Remo' alcantara seat centre sections (not shown). Please note, Black is available on all models, Truffle is available on Scirocco and GT models and 'Exclusive' two-tone Cornsilk Beige/Black is only available on GT models.

Some parts of leather interior contain artificial leather.



Specify leather upholstery option and you will also benefit from **heated front sports seats** with three individual preset temperature settings for both the driver and front seat passenger.

Interior shown is GT.



Heat insulating rear tinted windows from the B pillar back are 65% light absorbing, and helps reduce exposure to the sun's rays whilst giving your Scirocco a sporty look. Optional on Scirocco, Scirocco BlueMotion Technology and standard on GT, GT BlueMotion Technology and R models.



The **electric panoramic glass tilt only sunroof** is just as eye-catching from the outside as it is from the inside. Adding light and space, it fills the interior with additional natural light, providing an uninterrupted view of the sky overhead. Optional on all models.

Please note, with this option the storage compartment in roof console is removed.



When ordered in conjunction with leather upholstery, the **12-way electrically-adjustable driver's seat** offers adjustments for your seating position, enabling you to enjoy the most ergonomic and beneficial support for your spine. Optional on all models.

Some parts of leather interior contain artificial leather.



'**Lugano Black**' 8J x 19 alloy wheels with 235/35 R19 tyres and anti-theft wheel bolts form part of the **Style pack**, and add even more individuality to your GT. Also forming part of the Style pack are '**Piano Black**' decorative inserts in the dash and centre console. Deep lacquer, applied by hand in several layers creates a rich three-dimensional structure and depth, providing your Scirocco GT with a touch of opulence. Optional on GT and GT BlueMotion Technology models.

Please note, 19 inch alloy wheels and tyres in lieu of self-sealing tyres and flat tyre indicator.



Electrically heated, adjustable and **foldable door mirrors** with integrated indicators can be easily operated from the comfort of the driver's seat. Optional on all models.



'**Lugano**' 8J x 19 alloy wheels with 235/35 R19 tyres and anti-theft wheel bolts provide a sporty and dynamic addition to the exterior of the GT. Optional on GT and GT BlueMotion Technology models.

Please note, 19 inch alloy wheels and tyres in lieu of self-sealing tyres and flat tyre indicator.



'**Talladega**' 8J x 19 alloy wheels with 235/35 R19 tyres and anti-theft wheel bolts add even more style and finesse to the exterior of the R. Optional on R models.

Please note, 19 inch alloy wheels and tyres in lieu of self-sealing tyres and flat tyre indicator.



Escape the ordinary.

Model shown is Scirocco GT 2.0 TDI 140 PS.

Paint



Salsa Red
Non-Metallic
4Y

SC GT



Reflex Silver
Metallic
8E

SC GT R



Candy White
Non-Metallic
B4

SC GT R



Dark Oak
Metallic
P0

SC GT



Rising Blue
Metallic
4C

SC GT R



Indium Grey
Metallic
X3

SC GT



Viper Green
Metallic
6B

SC GT R



Night Blue
Metallic
Z2

SC GT



Silver Leaf
Metallic
7B

SC GT



Deep Black
Pearl Effect
2T


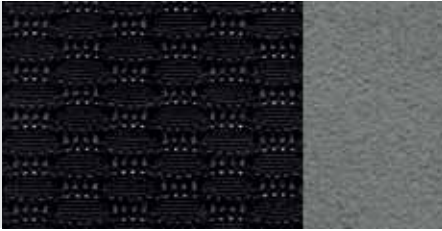



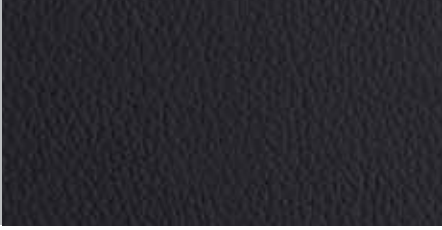

SC GT R

SC Scirocco GT GT R R

Standard Optional at extra cost

Please note: The print processes do not allow exact reproduction of the paint colours.

Upholstery

Black Sports seats in 'Merlin' cloth AZ Standard on Scirocco and GT models	
Titan Black/Crystal Grey Sports seats in 'Kyalami' cloth with 'San Remo' alcantara side bolsters IH Standard on R models	
Black Sports seats in 'Vienna' leather* QX Optional on Scirocco and GT models	
Truffle Sports seats in 'Vienna' leather* TL Optional on Scirocco and GT models	
Cornsilk Beige/Black Sports seats in 'Exclusive' two-tone 'Vienna' leather* IJ Optional on GT models	
Black Sports seats in 'Vienna' leather* QX Optional on R models	
Titan Black 'Recaro' sports seats in 'Vienna' leather* with 'San Remo' alcantara seat centre sections IC Optional on R	

Standard Optional at extra cost * Some parts of leather interior will contain artificial leather. Please note: The print processes do not allow exact reproduction of the upholstery colours.

Combinations

Seat upholstery	Carpet	Dashboard	Salsa Red 4Y	Candy White B4	Rising Blue metallic 4C*	Viper Green metallic 6B*	Silver Leaf metallic 7B*	Reflex Silver metallic 8E*	Dark Oak metallic P0*	Indium Grey metallic X3*	Night Blue metallic Z2*	Deep Black pearl effect 2T*
'Merlin' cloth Black (AZ) Standard on Scirocco and GT models	Anthracite	Anthracite/Anthracite	●	●	●	●	●	●	●	●	●	●
Sports seats in 'Kyalami' cloth with 'San Remo' alcantara side bolsters Titan Black/Crystal Grey (IH) Standard on R models	Anthracite	Anthracite/Anthracite	-	●	●	●	-	●	-	-	-	●
Sports seats in 'Vienna' leather*† Black (QX) Truffle (TL) Optional on Scirocco and GT models	Anthracite Anthracite	Anthracite/Anthracite Anthracite/Anthracite	○ -	○ ○	○ -	○ -	○ ○	○ ○	○ ○	○ ○	○ ○	○ ○
Sports seats in 'Exclusive' two-tone 'Vienna' leather*† Cornsilk Beige/Black (IJ) Optional on GT models	Anthracite	Anthracite/Anthracite	○	-	○	○	○	○	○	-	○	○
Sports seats in 'Vienna' leather*† Black (QX) Optional on R models	Anthracite	Anthracite/Anthracite	-	○	○	○	-	○	-	-	-	○
'Recaro' sports seats in 'Vienna' leather*† with 'San Remo' alcantara seat centre sections Black (IC) Optional on R models	Black	Black/Black	-	○	○	○	-	○	-	-	-	○

* Metallic and pearl effect paints and 'Vienna' leather upholstery are optional at extra cost.
† Some parts of leather interior will contain artificial leather.

Technical specification

		Scirocco 1.4 TSI 122 PS	Scirocco 1.4 litre TSI 160 PS	GT 2.0 litre TSI 210 PS	R 2.0 litre TSI 265 PS	Scirocco, GT 2.0 litre TDI 140 PS BlueMotion Technology	GT 2.0 litre TDI 170 PS
Engine	Engine type	Four cylinder petrol	Four cylinder petrol	Four cylinder petrol	Four cylinder petrol	Four cylinder diesel	Four cylinder diesel
	Cubic capacity, ltrs/cc	1.4/1390	1.4/1390	2.0/1984	2.0/1984	2.0/1968	2.0/1968
	Max. output, PS ⁽⁰¹⁾ /kW at rpm	122/90 5000	160/118 5800	210/155 5300-6200	265/195 6000	140/103 4000	170/125 4200
	Max. torque, lbs.ft/Nm at rpm	148/200 1500-4000	177/240 1500-4500	207/280 1700-5200	258/350 2500-5000	236/320 1750-2500	258/350 1750-2500
	Gearbox	Six speed manual –	Six speed manual Seven speed auto DSG	Six speed manual Six speed auto DSG	Six speed manual Six speed auto DSG	Six speed manual Six speed auto DSG	Six speed manual Six speed auto DSG
Weights, kgs	With manual gearbox: Unladen weight ⁽⁰²⁾	1319	1346	1373	1419	1379	1395
	Gross vehicle weight	1690	1720	1740	1770	1750	1770
	Payload ⁽⁰²⁾	446	449	442	426	446	450
	Axle load limit: Front	970	1000	1020	1050	1030	1050
	Rear	770	770	770	770	770	770
	With automatic DSG gearbox: Unladen weight ⁽⁰²⁾	–	1360	1393	1439	1395	1421
	Gross vehicle weight	–	1730	1760	1790	1770	1800
	Payload ⁽⁰²⁾	–	445	442	426	450	454
	Axle load limit: Front	–	1010	1040	1070	1050	1080
	Rear	–	770	770	770	770	770
Load limits, kgs ⁽⁰³⁾	Max. roof load	75	75	75	75	75	75
Performance	Top speed (where the law permits), mph (km/h) – manual gearbox	124 (200)	135 (218)	149 (240)	155 (250)	129 (207)	138 (222)
	– automatic DSG gearbox	–	135 (218)	148 (238)	155 (250)	127 (205)	136 (220)
	Acceleration, secs 0 - 62 mph – manual gearbox	9.7	8.0	6.9	6.0	9.3	8.1
	– automatic DSG gearbox	–	8.0	6.9	5.8	9.3	8.1
ABI insurance group, 1 - 50 [†]	18E	28E	32E	34E	22E	26E	
Environmental information	Fuel grade, minimum	Unleaded, 95 RON	Unleaded, 95 RON	Unleaded, 95 RON	Unleaded, 95 RON	Diesel ⁽⁰⁴⁾	Diesel ⁽⁰⁴⁾
	Fuel tank capacity, galls/ltrs	12.1/55	12.1/55	12.1/55	12.1/55	12.1/55	12.1/55
	Official fuel consumption – with manual gearbox, mpg/ltr per 100 km ⁽⁰⁵⁾						
	Urban	33.6/8.4	32.5/8.7	28.0/10.1	25.0/11.3	51.4/5.5	43.5/6.5
	Extra-urban	53.3/5.3	52.3/5.4	47.9/5.9	45.6/6.2	70.6/4.0	65.7/4.3
	Combined	44.1/6.4	42.8/6.6	38.2/7.4	34.9/8.1	62.8/4.5	55.4/5.1
	Official fuel consumption – with automatic DSG gearbox, mpg/ltr per 100 km ⁽⁰⁵⁾						
	Urban	–	35.3/8.0	28.2/10.0	25.9/10.9	47.9/5.9	39.8/7.1
	Extra-urban	–	52.3/5.4	47.1/6.0	44.8/6.3	62.8/4.5	61.4/4.6
	Combined	–	44.8/6.3	37.7/7.5	35.3/8.0	57.6/4.9	51.4/5.5
	Official CO ₂ emission, g/km – manual gearbox ⁽⁰⁶⁾	149	154	172	189	118	134
– automatic DSG gearbox ⁽⁰⁶⁾	–	147	174	187	129	144	
Emission class	EURO 5	EURO 5	EURO 5	EURO 5	EURO 5	EURO 5	
Noise, dB – manual gearbox	72.0	74.0	75.0	75.0	71.0	72.0	
– automatic DSG gearbox	–	71.0	74.0	73.0	69.0	68.0	
Maximum luggage capacity ⁽⁰⁷⁾	With rear seat upright	312	312	312	312	312	312

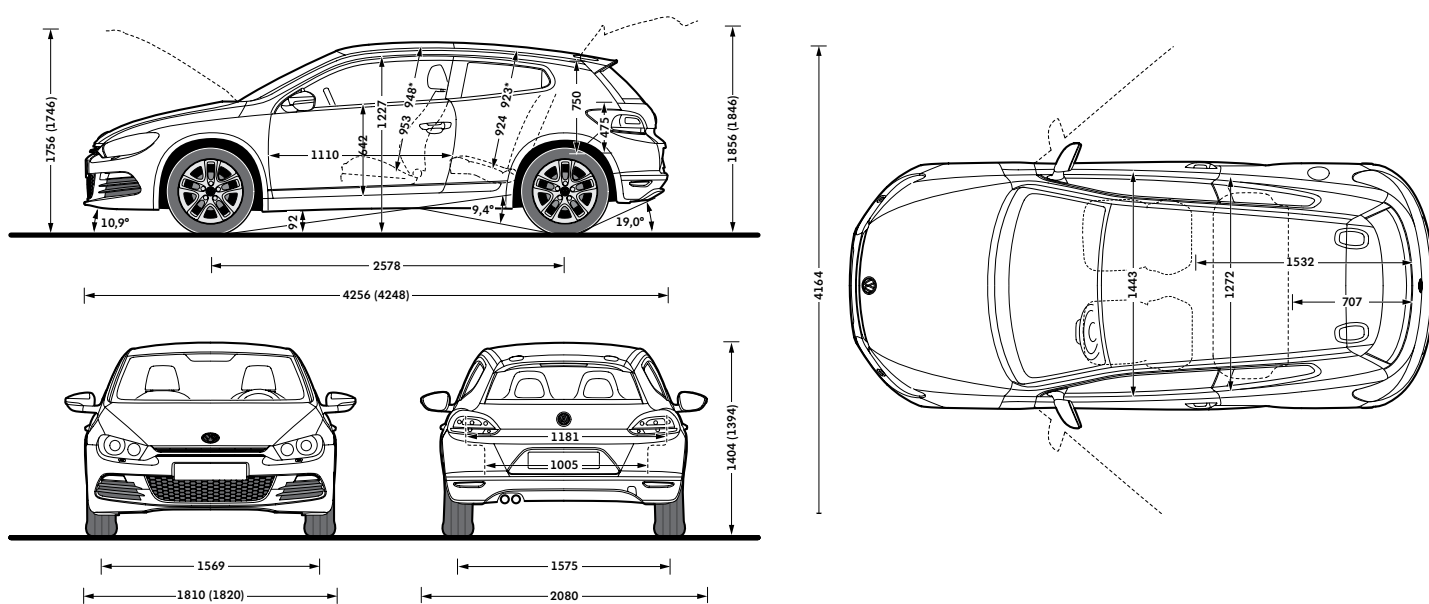
[†] Please note, as of December 2009 the insurance industry switched from the current rating system of groups 1 - 20 to a new 1 - 50 insurance scale.

Technical specification notes

- 01) The maximum power output figures are quoted in PS (or Pferdestärke, which is the metric equivalent of horsepower). To convert from metric to imperial horsepower, divide the PS figure by 1.0139.
- 02) Figures are calculated in accordance with manufacturer's criteria. The individual unladen weight depends on the specification of the vehicle, this then reduces the possible payload accordingly. The unladen weight and payload both include the fuel tank 90% full, driver (68 kg) and luggage (7 kg) in line with EU directive 95/48.
- 03) With increasing altitude the engine performance diminishes. From 1,000 m above sea level and for every 1,000 m thereafter 10% of the vehicle/trailer weight (trailer weight + gross vehicle weight) must be deducted.
- 04) The use of RME and FAME (bio diesel) is not possible.
- 05) Official fuel consumption according to EU Directive 99/94. The consumption calculation according to 1999/100/EC is based on the actual unladen weight of the vehicle. Additional specifications can lead to a higher weight class and hence to consumption figures of this higher weight class. The driving style, road and traffic conditions, environmental influences and vehicle condition can in practice lead to consumption figures, which may differ from those calculated with this standard.
- 06) The weight of a vehicle will influence the level of CO₂ emission it produces; as a result, vehicles with higher levels of specification and factory-fitted options may emit higher levels of CO₂.
- 07) VDA measuring method using 200 x 100 x 50 mm blocks.

Dimensions

	Scirocco, GT	R
Exterior dimensions		
Length, mm	4256	4248
Width – including door mirrors, mm	2080	2080
Width – excluding door mirrors, mm	1810	1820
Width – opened doors, mm	4164	4164
Height, mm	1404	1394
Height – opened bonnet/floor, mm	1756	1746
Height – opened tailgate/floor, mm	1856	1846
Wheelbase, mm	2578	2578
Turning circle, mm	11000	11000
Interior dimensions		
Effective headroom – front, mm (with sunroof)	953 (948)	953 (948)
Effective headroom – rear, mm (with sunroof)	924 (923)	924 (923)



All figures in millimetres. R figures in brackets. * Dimensions with optional sunroof fitted.

Engines

- Front transverse-installed engine
- 1.4 litre/122 PS⁽⁰¹⁾ (90 kW) petrol engine: CAXA TSI engine with homogeneous mode (Lambda 1), stratified high-pressure start, double injection catalytic converter heating, turbocharger with waste gate, air-to-liquid charge-air cooling, maintenance-free timing chain, plastic intake manifold with integrated intercooler, continuous inlet camshaft timing adjustment, grey cast iron cylinder block, steel crankshaft, duo-centric oil pump, dual-circuit cooling system. Fuel system regulated according to requirements using high-pressure fuel pump with integrated pressure limiting valve
- 1.4 litre/160 PS⁽⁰¹⁾ (118 kW) petrol engine: EU5 compliant four cylinder in-line engine with homogeneous mode (Lambda 1), stratified high-pressure start, turbocharger with waste gate, additional mechanical supercharger, intercooler and dual-circuit cooling system. Fuel system regulated according to requirements using high pressure fuel pump with integrated pressure limiting valve. Intake manifold flap change-over omitted, regulated duo-centric oil pump, metal cartridge oil filter and three way catalytic converter
- 2.0 litre/210 PS⁽⁰¹⁾ (155 kW) petrol engine: four cylinder in-line engine, aluminium cylinder head, four valves per cylinder with roller rocker finger valve drive, electronic direct injection, variable inlet valve timing, programmed ignition with cylinder-selective anti-knock control, four single spark ignition coils, longlife spark plugs, exhaust gas turbocharger, three-way close-coupled pre-catalyst and underbody catalyst, lambda control
- 2.0 litre/265 PS⁽⁰¹⁾ (195 kW) petrol engine: four cylinder in-line engine, aluminium cylinder head, four valves per cylinder with roller rocker finger valve drive, electronic direct injection, variable inlet valve timing, programmed ignition with cylinder-selective anti-knock control, four single spark ignition coils, longlife spark plugs, exhaust gas turbocharger, three-way close-coupled pre-catalyst and underbody catalyst, lambda control
- 2.0 litre/140 PS⁽⁰¹⁾ (103 kW) common rail diesel engine: EU5 emissions standard, four cylinder in-line engine, four valves per cylinder, aluminium-silicon alloy cylinder head, reduced piston crown volume (improves swirl generation in the cylinder), toothed backlash compensator, intake manifold with electric continual tumble flap control, electronically controlled common rail direct injection fuel system with Bosch high pressure pump (up to 1800 bar) and 8-hole piezo injector units, pre-supply electronic fuel pump, oil cooler, intercooler, low temperature exhaust gas recirculation, additional coolant pump, turbocharger with variable turbine geometry, catalytic converter and Diesel Particulate Filter (DPF)

Engines (continued)

- 2.0 litre/170 PS⁽⁰¹⁾ (125 kW) common rail diesel engine: EU5 emissions standard, four cylinder in-line engine, four valves per cylinder, aluminium-silicon alloy cylinder head, reduced piston crown volume (improves swirl generation in the cylinder), toothed backlash compensator, intake manifold with electric continual tumble flap control, electronically controlled common rail direct injection fuel system with Bosch high pressure pump (up to 1800 bar) and 8-hole piezo injector units, pre-supply electronic fuel pump, oil cooler, intercooler, low temperature exhaust gas recirculation, additional coolant pump, turbocharger with variable turbine geometry, catalytic converter and Diesel Particulate Filter (DPF)

Transmission

- Front wheel drive through asbestos-free single-plate dry clutch. Hydraulic clutch-mechanism. Six speed manual or six or seven speed automatic DSG gearbox with double joint half axles (wet clutch on six speed DSG models)
- Six speed manual: 1.4 litre TSI 122 PS, 1.4 litre TSI 160 PS, 2.0 litre TSI 210 PS, 2.0 litre TSI 265 PS, 2.0 litre TDI 140 PS, 2.0 litre TDI 170 PS
- Six speed automatic DSG: 2.0 litre TSI 210 PS, 2.0 litre TSI 265 PS, 2.0 litre TDI 140 PS, 2.0 litre TDI 170 PS
- Seven speed automatic DSG: 1.4 litre TSI 160 PS

Running gear

- Electronic Stabilisation Programme (ESP) including Electronic Differential Lock (EDL), Traction Control (ASR) and Countersteer Support
- Front and rear anti-roll bar
- Front suspension through coil springs with telescopic shock absorbers, all elements integrated in chassis legs
- Rear suspension with gas pressure shock absorbers and separate springs
- Wheel control: front through chassis legs and (lower) triangular wishbones (directionally stabilising steering roll radius)
- Wheel control: rear through four-link suspension with independent wheel suspension
- XDS electronic differential lock (R only)

Steering

- Electro-mechanical steering rack
- Collapsible, height and lengthways adjustable safety steering column

Brakes

- Electronically controlled Anti-lock Braking System (ABS) with Electronic Brake-pressure Distribution (EBD)
- Diagonal twin-circuit brake system with front and rear disc brakes (front ventilated)
- Asbestos-free brake pads
- Hydraulic Brake Assist (HBA)

Volkswagen service

The Volkswagen Warranty.

Three-year Warranty.

All Volkswagen Sciroccos come with a three-year/60,000 miles warranty, which protects your car against the failure of most mechanical and electrical components due to manufacturing defects. This comprises a two-year manufacturer's warranty with unlimited mileage plus a further one-year/60,000 miles (whichever is soonest) Retailer Warranty. Should the mileage exceed 60,000 miles within the first two years, the manufacturer's two-year warranty will still be valid. If an additional warranty for subsequent years or higher mileage is desired, it may be purchased from an authorised Volkswagen retailer or repairer; however, this additional warranty must be purchased before the mileage reaches 60,000*. Full details of the three-year warranty are available from your authorised Volkswagen retailer or repairer.

* All warranty work must be completed by an authorised Volkswagen retailer or repairer.

Three-year Paint Warranty.

The paintwork of the Scirocco is covered against manufacturing defects for a period of three years. Naturally, the Scirocco must be cared for in compliance with the operating instructions which will be found in your vehicle handbook. Please consult your authorised Volkswagen retailer or repairer for full warranty details.

12-year Body Protection Warranty.

The internal body sections and panels of the Scirocco are covered against rusting through from the inside for 12 years. Naturally, the Scirocco must be cared for in compliance with the operating instructions. Please consult your authorised Volkswagen retailer or repairer for full warranty details.

Service Intervals.

Volkswagen are pleased to offer you a choice on how your Scirocco is serviced. The appropriate selection is entirely dependent on how the car is likely to be driven and its general use. To help you identify which type of service would be most suitable, please refer to the following guide.

The Time and Distance Service is recommended for vehicles that will cover less than 10,000 miles in 12 months and if the vehicle is likely to be used in the following way:

- Predominantly urban driving, short journeys with frequent cold starts.
- Activities regularly producing high engine loading, e.g. frequent hill climbs, driving with vehicle fully loaded and towing.
- Uneconomical driving style using high rpms with heavy acceleration and heavy braking.

The service intervals for the Time and Distance Service are as follows:

- Oil change service Every 10,000 miles/1 year (whichever is soonest).
- Interval service Every 20,000 miles/2 years (whichever is soonest).
- Inspection service Every 40,000 miles/3 years (whichever is soonest).

The LongLife Service is recommended for vehicles with a daily mileage of more than 25 miles where the vehicle is driven regularly mainly on longer distance journeys. The vehicle is driven mainly at a constant speed with minimum vehicle and engine loading, minimal towing and driven in an economical manner.

With the LongLife Service the vehicle can cover anywhere between 10,000[†] and a maximum of 18,000[†] miles or 24 months (whichever is soonest) between oil changes. Inspection service is typically in the third year of ownership and thereafter every second year, for vehicles with an approximate annual mileage of 10,000 miles.

[†] Please note that mileages are approximate as the service indicator system uses kilometres as the distance measurement. Please consult your authorised Volkswagen retailer or repairer for advice and full details.

Approved Accessories.

A comprehensive range of accessories from alloy wheels to carpet mats is available to complement the factory-fitted option list. Volkswagen approved accessories purchased from and fitted by your authorised Volkswagen retailer at the point of vehicle sale will also benefit from the three-year vehicle warranty.

Extended Warranty.

You may purchase additional protection from your authorised Volkswagen retailer or repairer, or contact 0870 9000 115.

Volkswagen Insurance[‡].

We want you to start enjoying your new car from day one and thanks to Volkswagen Insurance complimentary seven day cover, you can. Call free on 0800 316 7892 (lines are open Monday to Friday 8 am - 9 pm and Saturday 9 am - 5 pm), provide a few details and a cover note will be sent to your retailer. They will then tax your car and you can drive it away.

Visit www.insurewithvolkswagen.co.uk for details of the full range of insurance products available. Here you can also get a quote for your annual car insurance and buy it online too. All of our insurance products are designed to ease the pain of making a claim.

[‡] Volkswagen Insurance is a trading name of Volkswagen Insurance Service (Great Britain) Limited, an appointed representative of Volkswagen Financial Services (UK) Limited, Brunswick Court, Yeomans Drive, Blakelands, Milton Keynes MK14 5LR. Registered in England number 2835230. Volkswagen Insurance is sold, underwritten and administered by Allianz Insurance plc registered in England number 84638. Registered office 57 Ladymead, Guildford, Surrey GU1 1DB. Volkswagen Financial Services (UK) Limited and Allianz Insurance plc are authorised and regulated by the Financial Services Authority. Volkswagen Financial Services (UK) Limited and Allianz Insurance plc are not part of the same corporate group.

Volkswagen Finance[±].

Volkswagen Finance specialises in providing funding solutions for Volkswagen drivers. Whether your Volkswagen is for private or business use, you can choose from a range of funding options.

- Solutions – a personal contract plan
- Hire purchase
- Lease purchase
- Finance lease
- Contract hire

With all Volkswagen Finance products you can choose a fixed-cost maintenance plan to help you budget for your servicing and maintenance costs.

No matter what finance product you choose, your local Volkswagen retailer will be able to provide you with a personalised quote that could meet your budget and vehicle needs.

[±] Volkswagen Finance is a trading name of Volkswagen Financial Services (UK) Limited. An offer of finance depends on certain conditions. Available to people over 18 in the UK only.

Volkswagen Roadside Assistance.

Every new car is registered for Volkswagen Roadside Assistance for one year. This provides vehicle home and roadside recovery in the unlikely event of a breakdown in the UK and Europe (subject to conditions). Volkswagen Roadside Assistance can also be purchased for subsequent years. For full details, please contact your authorised Volkswagen retailer or repairer.

Tax Free Sales.

For full details, please contact your authorised Volkswagen retailer.

CO₂ Emissions.

Increased weight of a vehicle, including higher trim levels and the addition of options will have a detrimental influence on the level of fuel consumption and CO₂ emissions produced.

The CO₂ and fuel consumption figures are obtained from tests on a representative vehicle of the type, conducted and approved in accordance with Council Directive 80/1268/EEC as amended by Directive 1999/100/EC (or later) on the approximation of the laws of the member states relating to the carbon dioxide emissions and the fuel consumption of motor vehicles.

Please Note:

Some illustrations in this brochure do not necessarily reflect UK specifications and may not be available. In particular, controls and some items of equipment are positioned differently for the UK.

The specifications contained in this brochure are for information purposes only and are subject to change. If you require any specific feature, you must consult your authorised Volkswagen retailer who is regularly updated with any change in specification. Please check model availability and full specification details with your authorised Volkswagen retailer prior to ordering.

Note: We would like to advise you that telephone calls to Volkswagen Customer Care may be monitored and recorded as part of our training and quality assurance processes. All our monitoring and recording processes meet Ofcom regulations.