



**VOLVO C70**





**THERE'S MORE TO LIFE THAN A VOLVO. THERE'S THE TASTE OF THE SEA THAT SAYS YOU'RE ON VACATION. THERE'S THE SIGHT OF THE PEAK THAT MAKES YOU PUSH ON. THERE'S THE SOUND OF A LAUGH THAT MAKES YOU LAUGH. THERE'S THE INCOMPLETE SENTENCE THAT'S COMPLETELY UNDERSTOOD. THERE'S THE WIND USING THE CLOUDS TO KEEP THE STARS SHINY. THERE'S THE LOOK OF LOVE. THERE'S THE SCENT OF FANTASY. THERE'S THE SLAP OF REALITY. THERE ARE FIVE SENSES THAT TRIGGER EMOTIONS. THERE ARE EMOTIONS THAT INFORM RATIONALITY. THERE'S A SIXTH SENSE THAT KNOWS THIS ALREADY. THERE'S COMMON SENSE, OF COURSE. AND THERE'S UNCOMMON BEAUTY. THAT'S WHY THERE'S A VOLVO C70.**







This is why we sing.





What this car does to inspire your travels and make real your dreams, it does with the sky as your witness. This is where the emotional and the physical intersect: where the art and power of clean Scandinavian design comes to be a spectacular convertible and a stylish coupe.





## Emotions may drive us, but you get to steer.

Where to? As you discover new roads and rediscover favourite journeys, expect a high level of comfort as well as exhilaration at every turn. Grip the supple steering wheel and settle into one of the world's most comfortable automobile seats. You'll recognise the cabin's elegance as a testament to simplicity and a model of ergonomic excellence, yet sophisticated onboard technology like Bluetooth® connectivity and GPS navigation are quietly at work and close at hand.









## The sky is not the only place to find stars.

From the wheels up you'll discover first-class comfort, world-class safety and form that beautifully serves function. At first glance you'll notice new Volvo design details such as the headlamps that sweep back gracefully, yet seek out protectively with Active Bending Lights and the redesigned rear lamps that include state-of-the-art Adaptive Brake Lights that rapidly flash to warn cars behind when you have to brake harder than normal. Ever so stellar, nothing shines brighter than legendary Volvo safety.





## A magic carpet for the modern world.

Enjoy smooth sailing with the top up or down. The stiff, reinforced car body of the Volvo C70 enables the advanced suspension system to sense and predictably cope with all types of road surfaces. What's more, the informative electro-hydraulic steering responds immediately to your commands while even the rear wheels will turn slightly to help you glide through corners. And whether you choose the petrol-fuelled T5 or the new diesel-powered D4, you'll find ample reserves of torque, smooth delivery of power and instant response at any speed. Like magic.



What makes a moment sensational?

Moments are measured, in part, by their ability to recall a sound, taste, smell, touch or sight. A journey with the top down, with all senses engaged, seems to increase a moment's chance of being sensational.

And being sensational is okay with us.







## A short cut to the centre of attention.

The well-appointed cabin of the Volvo C70 seats four travellers in total comfort. Elegant simplicity and tasteful detailing are the hallmarks of sophisticated Scandinavian design and beautifully represented here with Volvo's real aluminium inlays and Volvo's genuine chrome-free leather. Up front, the unique floating centre stack is also available in Volvo's real wood and presents simple controls for information, entertainment, comfort and more. In the back, the rear-seat passengers can wave to the crowd while enjoying plenty room and backrests with a comfortable tilt.









Put the top down. Turn the stereo up.  
Life is simple again.

Music has a friend in Volvo's modern sound systems. With talent in abundance, here you'll find a choice of three excellent systems – each calibrated especially for the interior of Volvo C70 (top-up and top-down). Each system features a CD player and RDS radio as well as an auxiliary input so you can plug in a portable music player. For those with an iPod® or mp3 player, there is a USB and iPod® Music Interface available to make your playlists appear in the centre console display. And to make things ever so simple, all systems can be controlled from buttons on the steering wheel.





## Premium Sound. Total immersion.

This is an audiophiles dream. When you choose The Premium Sound system you are taking centre stage – surrounded by gloriously accurate sound reproduction provided by world-class components. Finessed by Dolby® Pro Logic® II Surround – which utilises a special centre loudspeaker and sophisticated sound processing – The Premium Sound system ensures that every passenger enjoys a well-balanced stereo presence regardless of seating position (a remarkable achievement considering how nobody sits in the middle of the car). What's more, an extremely efficient digital Class D amplifier powers twelve perfectly matched loudspeakers with superior transient response and pure dynamics. But that's not all. Add two subwoofers (for a total of 910 Watts!) and you have a convertible with a sound system that can blow the roof off.





A marvel of engineering eclipsed only by the beauty it reveals.

The world's first three-piece retractable hardtop is a marvel of engineering. You'll soon discover this for yourself because as the roof automatically goes up, so will the corners of your mouth. In fact, it's hard not to smile. Just push a button on the centre console and the retractable top performs a synchronised metamorphosis that seems to inspire applause. And with the insulated roof hidden in the boot, there's still room in there for your tennis gear. From hardtop coupe to open-air convertible in less than thirty seconds – with a grin that lasts much longer. Having two dream cars on one set of wheels is a beautiful thing.





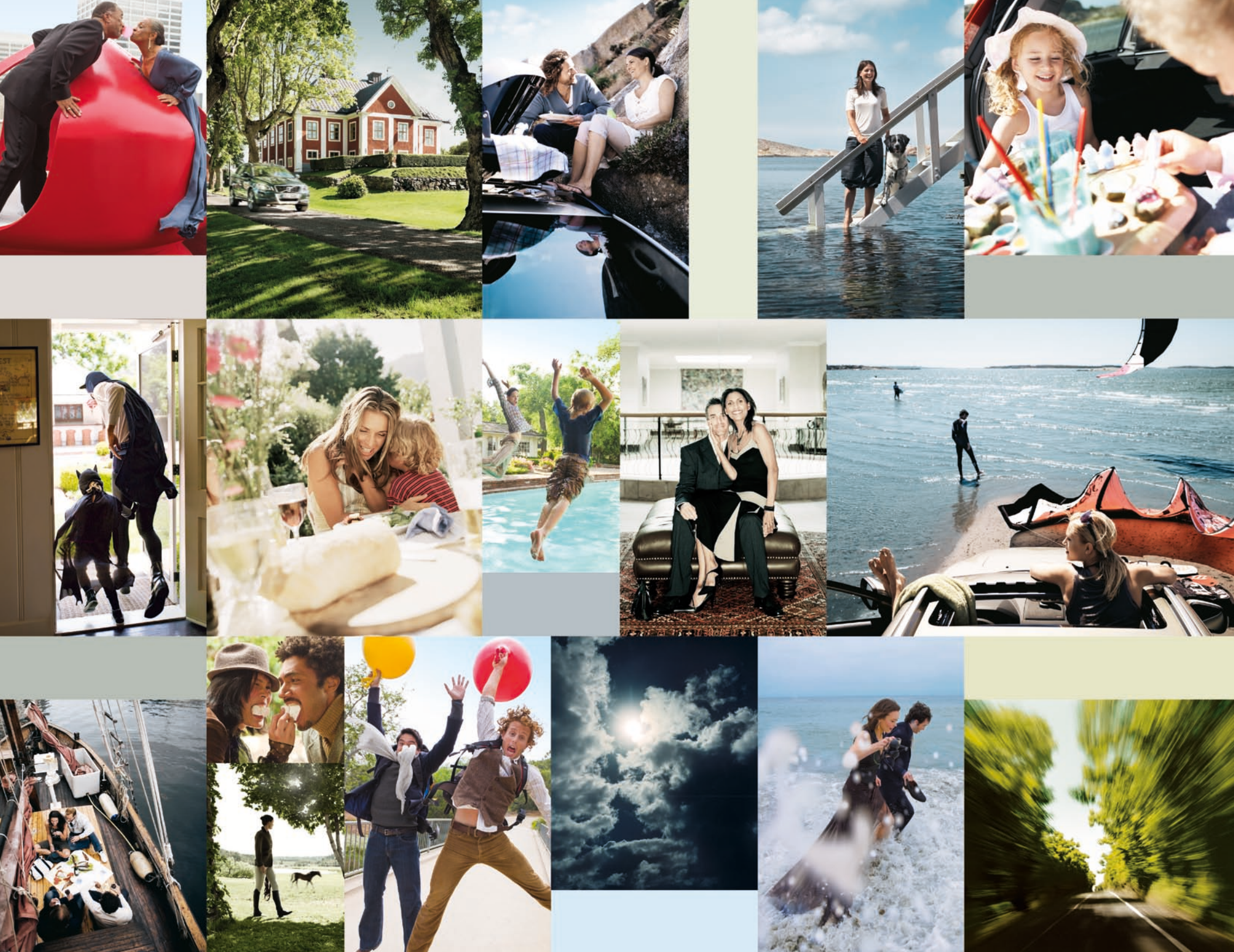




Attractive, inviting, yet very exclusive  
– especially when locked.

Perhaps because it is built in Sweden, so close to the North Pole, this beautiful Volvo C70 has a certain undeniable magnetism. But with this magnetism comes a responsibility we take seriously – because Volvo safety doesn't stop when you park your car. With the hardtop up, this car provides a much higher level of anti-theft protection than a soft-top. But even with the roof down, an advanced locking system affords secure storage of personal items. And with keyless drive, you can unlock doors as you grasp the handle and start the car with the key still in your pocket or handbag.





**THERE'S MORE TO LIFE THAN A VOLVO. THAT'S WHY WE DESIGN OUR CARS TO SUPPORT YOU IN ANY SITUATION ON THE ROAD. THAT'S WHY OUR SAFETY TECHNOLOGY HAS PUSHED AUTOMOTIVE DEVELOPMENT FOR MORE THAN EIGHTY YEARS. THAT'S WHY WE AIM FOR A FUTURE WHERE CARS DON'T CRASH. THAT'S WHY WE LEAD THE WAY TO ZERO EMISSIONS, AND OFFER ONE OF THE PREMIUM SEGMENTS STRONGEST RANGES OF LOW CO<sub>2</sub> ALTERNATIVES. AND THERE ARE ALL THE REASONS IN THE WORLD TO MOVE THE BOUNDARIES FOR WHAT'S POSSIBLE AND WHAT'S NOT. THAT'S WHY WE INNOVATE FOR LIFE.**



Innovated for your enjoyment, the Volvo safety technologies will protect more than the fun of driving.

Across the world, Volvo equals safety. And that comes with good reason, because few carmakers can match our record of safety innovations and the commitment for safety that has guided us for more than 80 years. Of course, this makes us extremely proud. But we're not satisfied. Because we know what we want to achieve: zero accidents. This huge task calls for innovative thinking and a brand new approach to the way we design cars. Good news is we've already come a long way. For starters, our cars are more fun and engaging to drive than ever (because a bored driver will never be a safe driver). Neither is the technology needed any figment of the imagination – some is already available in your Volvo. This means driving a Volvo today is like having a first peek at a very exciting automotive future – a future where passionate engineering and design do more to help you get the most out of life.

After all, there's more to life than a Volvo.



**EXHILARATING COMFORT.**

Ergonomic design in seats and driver's environment makes you relaxed and helps maintain your concentration on driving.

**PERSONAL GATEKEEPING.**

Inspired by fighter aircraft technology, Intelligent Driver Information System (IDIS) can help reduce your workload in stressful situations.

**24/7 PEACE OF MIND.**

Stay cool. Volvo On Call is Volvo's integrated emergency and roadside assistance technology.

**ON-ROAD ENLIGHTENMENT.**

Active Bending Lights (ABL) with Dual Xenon technology expands your vision range when driving in the dark and provides considerably improved illumination around bends.

**STAY ON TRACK.**

Volvo's anti-skid system Dynamic Stability and Traction Control (DSTC) improves handling and safety in a wide range of challenging situations.

**AN EYE ON THE BLIND SPOT.**

Blind Spot Information System (BLIS) helps you detect vehicles entering your blind spot.

**EYES IN THE BACK.**

Park Assist alerts you if you're too close to an obstacle behind your car when reversing.





## Designed to catch the light brilliantly, this car also reflects a promise.

Thankfully, the automotive industry is moving away from fantasyland to the real world. Our journey towards a better environment started already in the early 70's. Then we were among the first carmakers to acknowledge the environmental downside of cars and to do something about it. Since then we are constantly innovating to reduce the environmental impact of the cars and how we make them.

Today's biggest challenge is, of course, to reduce the carbon dioxide emissions that cause climate change. Today we offer one of the premium segments strongest ranges of low CO<sub>2</sub> alternatives: the Volvo DRIVe variants. Utilising innovative powertrain technology together with advanced aerodynamics, low friction technology and lightweight materials, the DRIVe range is an important step towards zero emissions.

In near future we will introduce new technology such as plug-in hybrid vehicles that will further reduce CO<sub>2</sub> emissions and can be charged from a standard wall socket. And we're heavily engaged in the development of electrical vehicles – a technology that will dramatically reduce the environmental footprint of our cars and make them even more fun to drive.

Good for you, and for the world we share.



### MAXIMISED FUEL EFFICIENCY WITH DIESEL.

Volvo's advanced common-rail turbodiesel technology ensures superior fuel economy and low CO<sub>2</sub> emissions, like the new D3 with its 5.8 l/100 km and 154 g CO<sub>2</sub> per km.

### FRESH CABIN AIR.

Continuously monitoring incoming air and shutting out carbon monoxide, ground-level ozone and nitrogen dioxide, Volvo's Interior Air Quality System helps ensure that the air you breathe in the car with the roof up is cleaner than that outside when driving in heavy city traffic.

### ALLERGY-TESTED MATERIALS.

All our upholsteries and interior textiles are tested for certain allergy-inducing or harmful substances and comply with Oeko-Tex Standard 100. And several interior metal details are tested with regard to contact allergies. Good for you, and for anyone who shares your ride.

### FUEL-SAVING DESIGN.

To reduce energy-loss from wind and roll resistance, we utilise advanced aerodynamic design, light-weight materials and low-friction technology. Together with state-of-the-art engine technology, this lowers your CO<sub>2</sub> emissions and helps you travel further on less fuel.

### BRAKE FOR ENERGY.

Driving any of the turbodiesels, the battery is fed with extra power everytime you brake. Smart and fuel-saving.

### 85% RECYCLABLE.

To help minimise its total environmental impact, every Volvo is designed to facilitate recovery and recycling at the end of its useful life.

### CLEANER EXHAUST.

Fast responding after a cold start, Volvo's advanced emission control eliminates between 95 and 99% of carbon monoxide, hydrocarbons and nitrogen oxides from petrol engine exhaust gases. The Volvo turbodiesels feature a particulate filter that removes about 95% of the particles from the diesel exhaust gases. All engines comply with stringent Euro 5 emission requirements.



**THE CREATION OF YOUR VOLVO STARTS UNDER THE HOOD.** A major part of the experience ahead of you is defined by the engine you choose. Is it maximum performance and a sporty engine character that make your heart tick? Or do you prefer relaxed cruising and the highest possible fuel mileage? Whichever engine satisfies your requirements, you will enjoy instant power and smooth running while state-of-the-art fuel management systems make the most of every micro-drop of fuel. Pick your engine, and enjoy the drive.

#### PETROL ENGINE

### T5

auto

219 CO<sub>2</sub> g/km

9.4 l/100 km

230 hp

320 Nm

#### DIESEL ENGINE

### D4

man/auto

154/169 CO<sub>2</sub> g/km

5.8/6.4 l/100 km

177 hp

400 Nm

### D3

man/auto

154/169 CO<sub>2</sub> g/km

5.8/6.4 l/100 km

150 hp

350 Nm

Technical data may be subject to change. Please talk to your Volvo dealer for the latest information.



**EQUIP YOUR OWN VOLVO C70.** As you define your own style and specify your needs, choose one of Volvo's equipment levels – Momentum or Summum. These ample packages add luxury and comfort beyond the impressive standard equipment level and reflect our core belief that functionality and beauty go everywhere together. For more information about the different equipment levels, please contact your Volvo dealer or visit [www.volvocars.com](http://www.volvocars.com)

#### STANDARD

16-inch aluminium wheels  
Anti-locking brakes with Emergency Brake Assistance (EBA) and Electronic Brake Distribution  
Adaptive brake lights  
AUX input  
Bauxite panel trim  
Borgholm textile/Flextech upholstery  
Central locking, remote controlled  
Cruise control  
Cup holders front and rear with sliding cover  
Deadlock door locks  
Door-mounted IC (Inflatable Curtain)  
Driver and passenger side airbags  
DSTC (Dynamic Stability and Traction Control)  
ECC (Electronic Climate Control) with IAQS (Interior Air Quality System)  
Fog lamps front

Frontal airbags  
IDIS (Intelligent Driver-Information System)  
Illuminated vanity mirrors  
ISOFIX rear seat  
Leather-clad gear knob  
Leather-clad hand break lever  
Leather-clad steering wheel  
Load-aid  
Performance 4x20 W audio system with RDS radio/CD and 6 speakers  
Power and heated door mirrors  
Retractable hardtop  
ROPS (Roll-Over Protection System)  
Side Impact Protection System (SIPS)  
Trip computer  
Watch dials  
WHIPS (Whiplash Protection System)

#### MOMENTUM

Includes Standard equipment with the addition of:  
  
Haverdal leather/Flextech upholstery  
Aluminium inlay  
Autodim mirror  
Retractable rear view mirrors with puddle lights  
Parking Assist rear  
Rain sensor  
Humidity sensor

#### SUMMUM

Includes Standard and Momentum equipment with the addition of:  
  
Leather upholstery  
Power seat driver with memory  
Active Bending Lights incl. cleaning  
Heated seats

**N.B.** The contents in the equipment levels may vary from country to country. Please ask your Volvo dealer for further information.





**WANT A DYNAMIC TOUCH?** If stylish and sporty looks get your pulse racing, this may be the Volvo C70 for you: Sovereign Hide Offblack upholstery in Offblack interior with Aluminium centre stack and door panel inserts, leather-clad steering wheel with aluminium inlay, leather-clad gear knob with aluminium inlay and sports pedals. Exterior colour Ice White with colour matched rear spoiler lip and Midir 18" Diamond Cut aluminium wheels.



**OR MODERN LUXURY?** Some people prefer sophisticated, timeless elegance. If that sounds like you, your new Volvo C70 can look like this: Sovereign Hide Calcite upholstery in Umbra interior with Nordic Light Oak centre stack and door panel inserts, leather-clad steering wheel and leather-clad gear knob. Exterior colour Ember Black metallic and Sirona 17" Diamond Cut aluminium wheels.



**COLOUR YOUR VOLVO.** When it comes to the appearance of your Volvo, the choice of exterior colour and wheels are probably your most important design decisions. And to add a truly exquisite touch to the paintwork of your Volvo – choose one of the unique Inscription colours. For more exterior styling options and to build your new Volvo online, please visit [www.volvocars.com](http://www.volvocars.com)

**Inscription**

Inscription is our exclusive design programme for a truly distinguished look.

**Clean colours**

To reduce usage of environmentally hazardous solvents all Volvo exterior colours are water-based. What's more, our painting facilities are among the cleanest in the world.

**Please note:** It's not possible to reproduce exact original shades in printed matter. Please ask your dealer to show you samples.



614 Ice White



491 Vanilla pearl  
**Inscription**



467 Magic Blue metallic



426 Silver metallic



612 Passion Red



702 Flamenco Red metallic



477 Electric Silver metallic  
**Inscription**



452 Black Sapphire metallic



474 Celestial Blue metallic



466 Barents Blue metallic



487 Ember Black metallic  
(shifts from deep black to copper effect depending on light)  
**Inscription**



019 Black Stone





**EXTERIOR DESIGN** Aluminium wheels



Midir 8x18"  
Diamond Cut/Light Grey



Mirzam 8x18"  
Silver Bright



Serapis C 7.5x17"  
Silver Bright



Sirona 7.5x17"  
Diamond Cut/Light Grey



Castula 7.5x16"  
Silver Stone

**ACCESSORY** Aluminium wheels

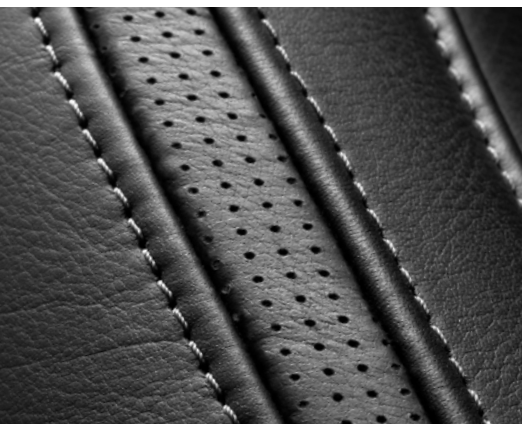


Draco 8x18"  
Split, Silver Bright

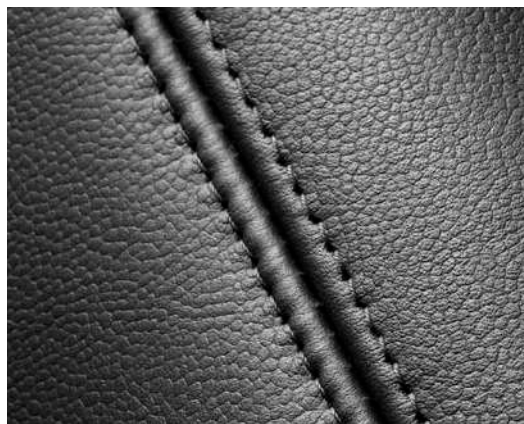


**IMAGINE YOUR NEW INTERIOR.** Crafted according to your requirements, the interior of your Volvo can take on any number of personalities. Choose between two interior colours – Offblack or Umbra – and different upholstery variants. Pick the interior that suits you and add the finishing touch with the interior trim, steering wheel, gear knob and floor mat of your choice. After all, you're probably going to spend a lot of time here.

**Ergonomic design** Developed in co-operation with ergonomic specialists to provide generous support for the body during hours of driving, the seats in the Volvo C70 are among the most comfortable in the automotive world. Multiple adjustment possibilities and adjustable lumbar support make it easy to find the perfect driving position.



**Sovereign Hide**  
This full leather upholstery is made from the finest Scottish hide. It's thick, soft to touch and has an exquisite natural grain.



**Leather**  
This is the upholstery that affords the Volvo C70 an atmosphere of luxury. It's a new hide quality that's smooth, durable and has a fine grain pattern. Like all Volvo leather, it's organically tanned and ages beautifully.



**Haverdal**  
A striking combination of durable Flextech upholstery and smooth leather, reflecting the dynamic properties of the Volvo C70.



**Borgholm**  
Contemporary textile upholstery trimmed with ultra-modern Flextech, inspired by wetsuits and durable outdoor gear.

**INTERIOR DESIGN**



Leather-clad steering wheel, Charcoal



Leather-clad sports steering wheel with aluminium inlay, Charcoal



Leather-clad gear knob, manual



Leather-clad gear knob, Geartronic



Leather-clad gear knob with aluminium inlay, manual



Leather-clad gear knob with aluminium inlay, Geartronic



Sports pedals in brushed aluminium (available for manual and Geartronic)



**INTERIOR DESIGN**



Offblack sports textile mats with reflective edging



Offblack textile mats



Cacao textile mats



Calcite textile mats



Bauxite centre stack and door panel inlays



Aluminium centre stack and door panel inlays



Oyster Burst Déco centre stack and door panel inlays



Nordic Light Oak centre stack and door panel inlays. Also available for centre stack roll-top cover

Interior design	Upholstery	Interior colour	Dashboard and door panels		Door inserts	Carpeting
			Upper part	Lower part		
Offblack	Sovereign Hide, Leather, Haverdal, Borgholm	Offblack	Offblack	Offblack	Offblack	Offblack
Cacao	Sovereign Hide, Leather	Offblack	Offblack	Offblack	Cacao	Offblack
Cranberry	Leather	Offblack	Offblack	Offblack	Cranberry	Offblack
Calcite	Sovereign Hide, Leather	Offblack	Offblack	Offblack	Calcite	Offblack
Quartz	Haverdal	Umbra	Umbra	Quartz	Quartz	Quartz
Calcite	Sovereign Hide, Leather	Umbra	Umbra	Quartz	Calcite	Quartz

**INTERIOR DESIGN**



Sovereign Hide Calcite in Umbra interior, 5E84  
Nordic Light Oak centre stack and door panel inserts.



Sovereign Hide Calcite in Offblack interior, 5E78  
Nordic Light Oak centre stack and door panel inserts.



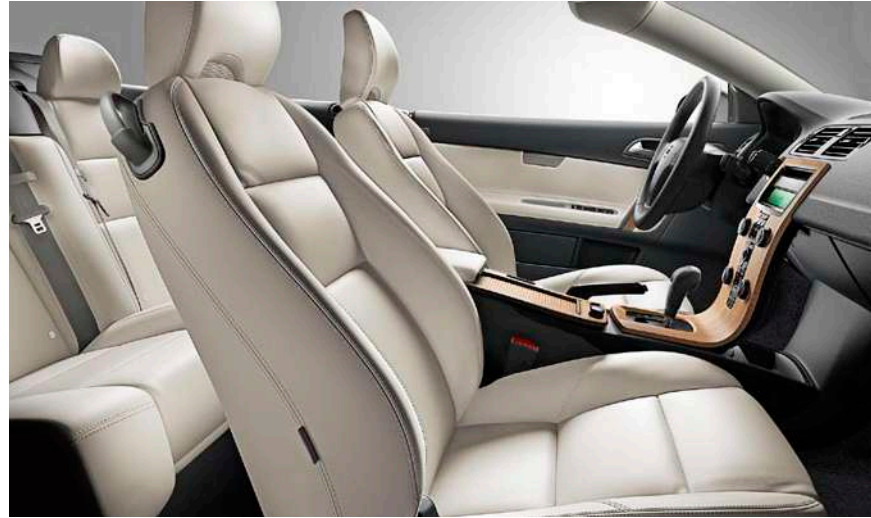
Sovereign Hide Offblack in Offblack interior, 5E77  
Aluminium centre stack and door panel inserts.



Sovereign Hide Cacao in Offblack interior, 5E79  
Aluminium centre stack and door panel inserts.



**INTERIOR DESIGN**

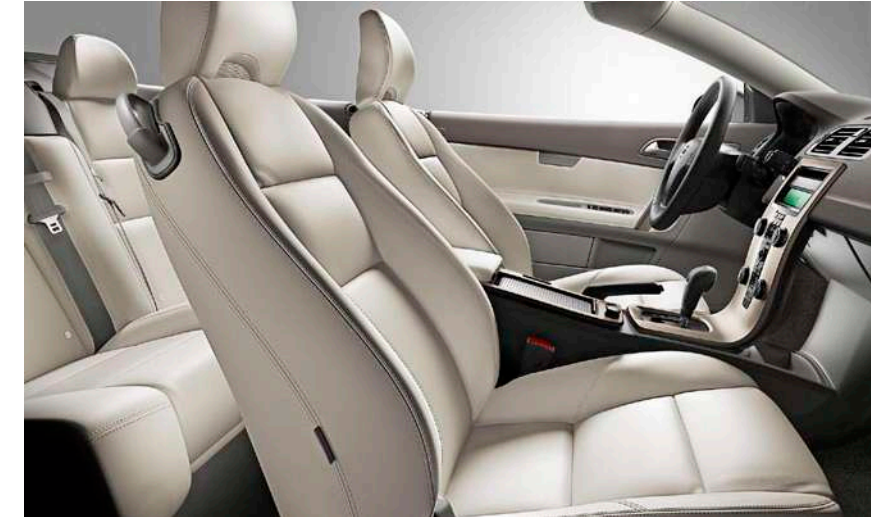


Leather Calcite in Offblack interior, 5D78  
Nordic Light Oak centre stack and door panel inserts.



Leather Cranberry in Offblack interior, 5D7M  
Aluminium centre stack and door panel inserts.

**INTERIOR DESIGN**



Leather Calcite in Umbra interior, 5D84  
Oyster Burst Déco centre stack and door panel inserts.



Borgholm, Textile/Flextech, Offblack in Offblack interior, 5577  
Bauxite centre stack and door panel inserts.



Leather Offblack in Offblack interior, 5D7H  
Aluminium centre stack and door panel inserts.



Leather Cacao in Offblack interior, 5D79  
Oyster Burst Déco centre stack and door panel inserts.



Haverdal, Flextech/Leather, Quartz in Umbra interior, 5681  
Nordic Light Oak centre stack and door panel inserts.



Haverdal, Flextech/Leather, Offblack in Offblack interior, 5677  
Aluminium centre stack and door panel inserts.

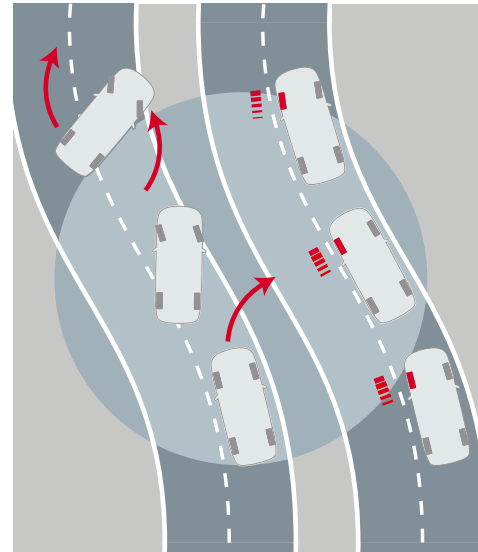


# SAFETY

At the core of every car we make, state-of-the-art technology helps support the driver and protect the occupants. And to further enhance the Volvo safety experience, there's a range of supplementary safety technology – for more performance and peace of mind.



## SAFETY Preventive



### Dynamic Stability and Traction Control (DSTC)

Dynamic Stability and Traction Control, DSTC, enhances driving stability and helps you maintain traction in a wide range of situations. At the core of DSTC, a gyroscope senses the car's direction and compares this with steering wheel movements as well as the actual rotation of the car's wheels. DSTC is able to detect a potential skid and help counteract one by reducing the engine's power output, or braking on one or more wheels.



### Adaptive brake light

Active at speeds above 50 km/h, the adaptive brake light can sense the difference between normal and panic braking. If it is a panic situation, all the brake lights will flash at a rate of four times per second. Once your speed slows to below 10 km/h, the lights stop flashing and hazard lights flash instead. Using LED technology that needs less time to light up than regular bulbs, traffic behind you can react sooner.

### Intelligent Driver Information System (IDIS)

To help avoid distractions during critical driving situations, IDIS constantly analyses your driving and will delay secondary information from the car or one of its onboard systems – such as the GSM phone – when it detects intense steering, braking or acceleration. As soon as things calm down, the phone call or the delayed information is presented. IDIS can be set up to let GSM calls through in all driving situations.

### Anti-locking brakes with Emergency Brake Assistance (EBA)

The anti-locking disc brakes are designed for optimal performance even during repetitive and intensive use. You can brake as hard as you like as you steer clear of trouble. EBA detects an attempted emergency braking and, when necessary, provides added assistance to bring the car to a standstill in the shortest possible distance. Electronic Brake Distribution (EBD) distributes the braking effect between the front and rear wheels to achieve optimal results according to load and driving conditions.

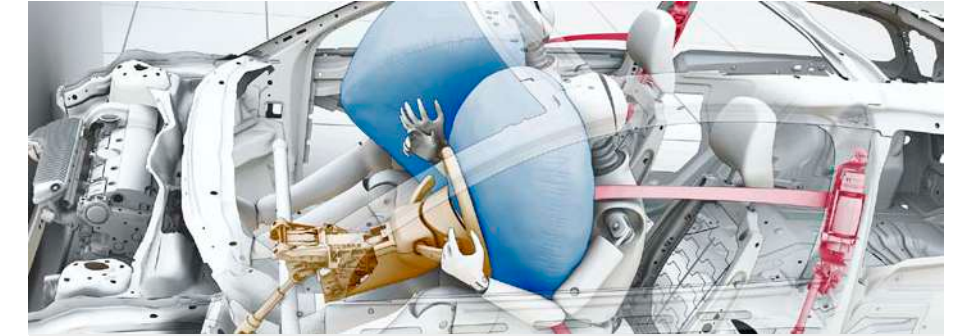
## SAFETY Preventive



### Active Bending Lights (ABL)

Compared to conventional halogen headlamps, Active Bending Lights use Dual Xenon technology to expand your vision range by about 230%. This means you'll be helped to gain 45 metres more for braking. And using motorised lamps that turn up to 15° in either direction, this technology gives a 90% boost to your vision round bends at night. You can enjoy highly effective low beam illumination on narrow, winding roads and extremely powerful full beams on the motorway. A daylight sensor disengages the adaptive function during daytime to extend its lifespan. Independent of the load, these headlights self-adjust to maintain the correct angle to the road – even during hard acceleration or braking.

## SAFETY Protective



### Restraint technologies

In a collision, Volvo's restraint technologies interact to help reduce the impact. The **safety belts with pre-tensioners** activate within a few thousandths of a second in the event of a collision or roll-over and tighten the belt to help keep the occupants securely restrained. The front seat safety belts then release a little so that the driver and passenger are cushioned by the airbags in a controlled manner. Helping to optimise protection, the **dual-stage airbags** adapt the level of inflation depending on the force of the collision. The driver's airbag also interacts with the deformation of the collapsible steering column. **Side airbags** in the front seats help reduce the risk of serious injuries in a side collision. A **door-mounted Inflatable Curtain (IC)** helps protect the head of each front seat occupant. It also stays inflated for some seconds to provide prolonged protection for subsequent impacts.



### Whiplash Protection System (WHIPS)

Integrated in the front seats, Volvo's WHIPS cradles the occupant to help reduce the risk of whiplash injury (one of the most common types of traffic injury and often the result of a low-speed rear impact collision). The function is activated by a collision of sufficient force from behind. Independent research has shown that WHIPS is one of the most effective systems in the world and can reduce the risk of long-term invalidity by 50%.





In a Volvo, safety is about interaction. Because it's not the number of safety features that determines how safe a car is. It's how well they seamlessly interact to help keep the occupants out of harm's way.

**In a rear impact** the rear deformation zones will help absorb crash energy. The fuel tank is designed to remain well protected in front of the rear axle. The head restraints help protect the neck and spine, and Volvo's unique Whiplash Protection System (WHIPS) cradles the front seat occupants in a controlled manner to help prevent whiplash injuries.

**In a side impact** Volvo's unique Side Impact Protection System (SIPS) helps distribute the crash forces across the car's body, away from the occupants. The side airbags in the front seats help protect the chest and hip, while the door-mounted Inflatable Curtain (IC) adds head protection.

**In a roll-over** the Roll-Over Protection System (ROPS) instantly deploys the retracted rear steel roll bars to form a safety cage together with the reinforced windscreen pillars. In the same instant, the door-mounted Inflatable Curtain (IC) and safety belt pre-tensioners are activated to help protect occupants.

**In a frontal collision** the patented frontal structure will yield to help absorb and disperse crash energy. The compact powertrain is designed to help optimise deformation. Inside the car, safety belts interact with the collapsible steering column and dual-stage airbags to help keep the occupants out of harm's way.

**Side Impact Protection System (SIPS)**

SIPS is a Volvo unique safety system that has been developed to help protect where occupants are most exposed to the crash forces. The steel framework of the car – including the front seats – is designed and reinforced to help displace the impact of a side-collision away from the occupants to other parts of the car body and help prevent intrusion into the cabin. The side structure is extremely strong to help withstand a severe side impact – even with a larger vehicle. The door-mounted Inflatable Curtain (IC) for the front seat occupants and the front seat side airbags interact to help provide further protection.

**Roll-Over Protection System (ROPS)**

In a rollover situation, Volvo's ROPS automatically activates. Triggered by a gyroscope that monitors the car's leaning angle, the reinforced steel roll bars behind the rear seats deploy to form a cage together with the reinforced A-pillars. In the same instant, the door-mounted inflatable curtains and safety belt pre-tensioners are activated to help provide further protection.

**Energy-absorbing frontal structure**

Volvo's patented frontal structure is built with several types of steel to allow optimal deformation – outer layers are more yielding, while steel closer to the cabin is more resilient. This structure helps absorb the impact of a collision before it reaches the occupants. The compact powertrain is designed to help optimise deformation. The unique geometry of the frontal structure and longitudinal steel struts in the doors help disperse crash energy away from the front to the rear of the car, further helping to reduce the strain on the occupants. A steel strut under the dashboard helps prevent components in the engine bay from intruding into the cabin. This also helps protect legs and feet.



**Passenger airbag cut-off switch**

This switch allows you to disengage the passenger airbag using the car key. When the airbag is switched off, you are notified via a message in the roof console display. The force of the passenger airbag is designed to help protect adults – children risk serious injury. Therefore, the airbag must first be disengaged if you intend to put a person shorter than 140 cm in the front passenger seat.



## SAFETY Child safety



### Volvo's child safety programme

To further enhance protection for children, we offer a child safety programme that is among the most comprehensive in the car world. Because infants have large heads and weak necks\*, we know that a child up to the age of 3–4 travels most safely facing the rear. Volvo's rear-facing child seats help provide maximum protection in a wide range of collisions. Children who have outgrown the child seat travel most safely seated on a booster seat, secured with the car's safety belt.

\* In a frontal collision at 50 km/h, the head of a six-month infant can be exposed to forces corresponding to a load of 100 kg!

**Please note:** If the front passenger seat airbag is switched on, children under 140 cm in height should never be seated in the front seat – not in conjunction with a child seat, a booster cushion or under any other circumstances.



### ► Infant seat (up to 13 kg)

Infants, from newborns up to about 1 year of age, travel safely backwards in this comfortable seat. It's installed using the car's safety belt. And for extra convenient installation using the car's ISOFIX attachments, an ISOFIX base can be added. Side wings help protect in a side impact, and the headrest and five-point harness are easily adjusted. The headrest is padded for a comfortable sleep and there's a canopy to block the sun. What's more, the infant seat is easy to carry and can be used as a babysitter.



### ► Convertible child seat (9–25 kg)

From the age of 9 months to about 6 years of age a child can continue to be seated backwards in this new child seat. Advanced design helps provide world-class protection and flexible seating for many years. The seat is fitted using the car's safety belt and is easily adjusted to help optimise comfort and safety. An integrated support leg helps facilitate safe backward installation. We recommend that children be seated backwards as long as possible. But when a child grows bigger (15–25 kg) and can not comfortably be seated facing to the rear, this seat can also be used as a forward-facing booster cushion that puts a child at the correct position for the car's safety belt.

## SAFETY Security



### Power retractable door mirrors with ground lighting

At the touch of a button, these door mirrors can be folded flat against the car where they are less likely to get damaged after you've parked. They also fold or unfold automatically every time you lock or unlock the car. The integrated ground lighting is activated with the remote control. Beyond enhancing security to and from your car at night, this is also convenient when getting in and out.

### Lockable storage

Add the lockable storage option so the storage compartments in the doors can be locked automatically with the car's remote-controlled central locking system.

### Approach and Home Safe Lighting

Activated with the remote control, Approach Lighting provides a warm reception on a dark night. This consists of interior and side lights – ground lighting too, if you choose it. Home Safe Lighting is activated with the headlight stalk as you leave the car and it provides a similar courtesy when exiting your car. This feature includes a dipped beam from the headlight to accompany you to your door.



### HomeLink®

With buttons integrated in the sun visor, HomeLink® allows you to operate remote controlled home appliances – such as garage door, home alarm and exterior lighting – without leaving the car.

HomeLink is a registered trademark of Johnson Controls Technology Company.

### Volvo On Call

Activating automatically if any of your car's airbags are deployed – or at the touch of a button – Volvo On Call is Volvo's roadside assistance and emergency service. Not only does it put you in direct contact with a Volvo On Call operator, a built-in GPS system allows them to pinpoint your location and get help to you as soon as possible. The system can also alert you to an attempted break-in, and if the car is stolen it can be traced via satellite.

### Automatic door locking

To further enhance your personal security, the doors can be set in the information menu to automatically lock the moment you drive away. Alternatively, lock them swiftly from the front seats using the lock button.

► = Accessory (can be fitted after you've purchased your car).



## COMFORT

A Volvo is always designed for more than one. Our technology aims to enhance the feel-good factor for everybody with the privilege of riding in a Volvo. And to further improve comfort and convenience, there's a range of clever equipment – customised for your Volvo and the people inside it.



### COMFORT Seats



#### Four individual seats

All occupants will appreciate the comfort of a separate full-size ergonomically designed seat. Rear seat passengers can simply lean back and relax on the laid-back 26 degree backrest, and there's generous space for legs and shoulders. Getting in or out of the rear seat is made simpler by the wide door opening and Easy Entry feature – a single sliding manoeuvre of the front seat – available on both manual or power seats.



#### Power front seats

Find your perfect driving position with push-button ease. The driver's seat also incorporates a memory function that stores three separate seat settings connected to a specific remote control – a feature that's appreciated when the car has several drivers.

### COMFORT Climate



#### ► Wind blocker

Effectively reduces draughts for the front-seat occupants when the top is down, improving ride comfort in all speeds. It features extra storage for luggage in the rear seat, and is easy to fit and remove.



#### Three-split retractable hardtop

The unique three-split retractable hardtop is fully automatic. While the car is stationary, simply press the button on the centre console and the three-section roof is down in less than 30 seconds. If you decide the weather's not right, another press of a button quickly puts you back under cover. Beyond turning the convertible into an elegant coupe, the steel roof provides a quiet and cosy environment in any climate – thanks to first-class upholstery, multi-layer insulation and a heated glass rear window. This also provides a higher level of security than soft-top convertibles.



#### ► Car cover

When your Volvo is parked, this soft multi-layer cover will provide weather and dirt protection and can be locked to help deter theft.

#### Electronic Climate Control (ECC)

With the roof up, ECC ensures you and your passengers always enjoy a pleasant in-car climate. It maintains the set temperature inside the car however much the temperature outside changes, or the sun shines in. The driver and front-seat passenger can set the temperature individually for each side. When the roof comes down, ECC automatically adapts to provide the most pleasant cabin climate possible.

#### Interior Air Quality System (IAQS)

Volvo's IAQS continuously monitors incoming air and will, if necessary, temporarily close external air vents to shut out carbon monoxide, ground-level ozone and nitrogen dioxide. Meanwhile, an active carbon filter protects the occupants from other harmful gases and unpleasant odours. This helps ensure that the air you breathe in the car is cleaner than that outside when driving in heavy city traffic and tunnels.

### COMFORT Storage



#### Front centre armrest, multifunctional

The multifunctional front centre armrest takes care of cups, CDs, coins, mobile phones, MP3 players and other vital goodies. Here you'll also find an AUX input and – depending on your choice of audio system – a USB port to connect your MP3 player to the car's audio system. There's even a table for the rear seat passengers. In the tunnel console between the seats, integrated cup holders are hidden under an elegant roll-top cover.

► = Accessory (can be fitted after you've purchased your car).

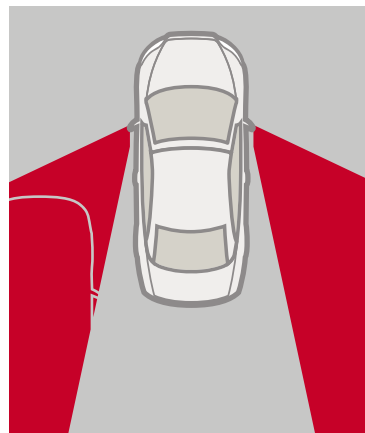


## TECH & SOUND

Employing the latest information technology, your Volvo is prepared to support and entertain you at a very high level. Surround yourself and your friends with world-class sound and enjoy the innovations that help ensure your command of the road and the pleasure of travelling.

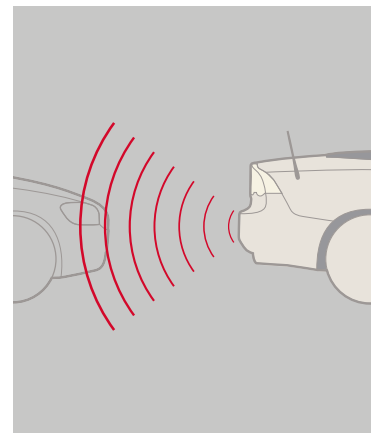


### TECH & SOUND Driver's Support



#### Blind Spot Information System (BLIS)

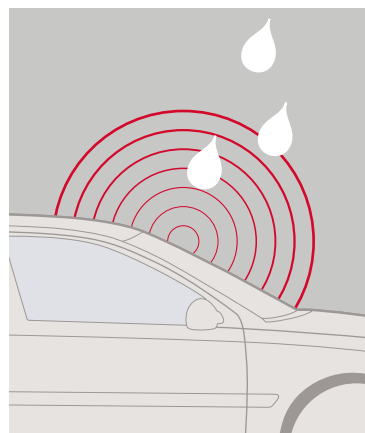
BLIS uses rear-facing cameras installed in the door mirrors to keep a lookout on either side of the car. As a vehicle enters your blind spot, this function can alert you with a lamp built in to the front door post – left or right. Together with the door mirrors, this helps you assess the feasibility of a lane change. BLIS is activated once the car exceeds 10 km/h, and reacts to almost any type of vehicle from a motorcycle upwards, day or night.



#### Park assist, rear

##### ► Park assist, front

Activated when you engage reverse gear, rear park assist helps you when reversing into tight spaces. The audio system is turned down and a pulsating sound from the rear loudspeakers becomes a continuous tone as you approach an obstacle. Front park assist performs a similar function at the front of the vehicle – alerting you via the front loudspeakers.



#### Rain sensor

Once activated, the rain sensor can start the windscreen wipers as soon as it begins to rain or if water splashes onto the windscreen. For your convenience, it can also automatically adapt the intermittent windscreen-wiper function. Its sensitivity can be adjusted via a ring on the wiper stalk.



#### Automatically dimmed inner rear-view mirror

This is a mirror that automatically adjusts itself to deflect the headlamp beams of the car behind you. When there's no light to dazzle you, it automatically readjusts to its normal setting. This can be supplemented with an integrated compass.

### TECH & SOUND Driver's support

#### Keyless drive

Keep the car key in your pocket or handbag. Using the keyless drive technology you can unlock the doors and drive away without using the car key. To start the engine, just turn the starter control in the instrument panel.

#### Personal settings

Define your Volvo's convenience and security settings according to your personal preferences using this simple computer interface. Depending on which technologies you have, this is where you configure the audio and climate settings, door mirrors, navigation, communication, central locking, Approach and Home Safe lighting and the Intelligent Driver Information System.

#### Trip computer

Monitor the current and average fuel consumption, driving range on current fuel reserves and average speed. Menu selection and resetting computer settings controlled by using the turn indicator stalk.

#### Cruise control

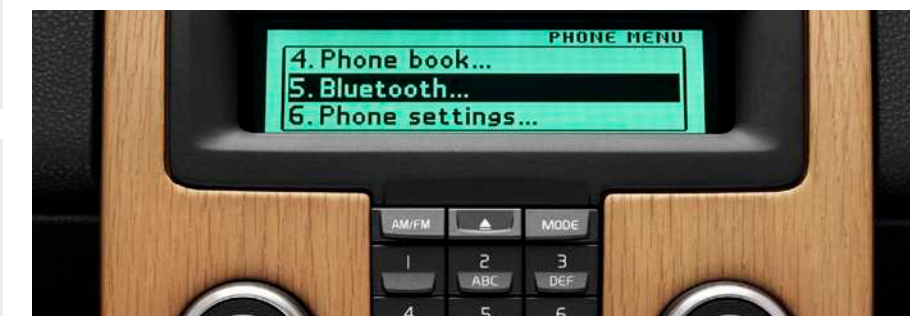
For a relaxing journey, cruise control automatically maintains your chosen speed. It is conveniently operated by controls on the steering wheel.

### TECH & SOUND Communication



#### Integrated phone

For minimum distraction, the integrated GSM phone allows you to make calls from your pre-programmed telephone book using the steering wheel integrated controls. You can also make calls using the keypad in the centre console. And when the car is stationary, you can read and send SMS text messages. For more private conversations, there's an extra handset.



#### Integrated Bluetooth® handsfree system

##### ► Bluetooth® handsfree system

Bluetooth® technology enables a mobile phone to be connected to the infotainment system in your Volvo, wirelessly. Once configured for a mobile phone, the system automatically recognises your phone as you enter the car. And as you climb in and out of the car, the system automatically allows you to switch freely from the phone to the handsfree system and back again. With Volvo's integrated Bluetooth® handsfree system you conveniently operate your phone using the buttons in the steering wheel or the centre console keypad. To further enhance your comfort and safety, you can also add Volvo On Call roadside assistance and emergency service. Available as an accessory, there's also a voice-controlled Bluetooth® handsfree system that will listen to your command and make calls for you.

The Bluetooth word mark and logos are owned by the Bluetooth SIG, Inc. and any use of such marks by Volvo Car Corporation is under license. Other trademarks and trade names are those of their respective owners.

► = Accessory (can be fitted after you've purchased your car).



**TECH & SOUND** Communication



**Road and Traffic Information (RTI)**

Volvo's GPS-based RTI navigation system offers both voice guidance and graphic navigation all the way to your destination. Via TMC (Traffic Message Channel) radio data broadcasts, RTI also lets you know if there's weather-related trouble on route and recommends an alternative. Extremely swift and precise, this new generation RTI features a hard disc drive covering maps for major parts of Europe. The system is fully integrated in your Volvo and is easily controlled from the steering wheel or optional remote, and the screen is positioned so you can keep your attention on traffic. You can choose between two operating modes – Easy and Advanced. When RTI is not needed, the screen is hidden into the dash. To help you keep track of new roads and points of interest, you can join our MapCare programme for two free map updates.



**► Volvo's Portable Navigation System**

This portable and powerful Garmin nüvi® 765 navigation unit integrates smoothly with the design of your Volvo. Just fit it into the docking unit on top of the dashboard. The wide bright touch screen is conveniently positioned in your field of vision. It allows you to navigate with ease, plan your route and find your points of interest. And beyond navigation, there are travel and entertainment functions such as MP3 player, currency converter, calculator and FM transmitter. The navigation unit is easy to carry with you and can also be used outside the car. Maps covering major parts of Europe are stored in memory.

nüvi is a trademark of Garmin Ltd.

**TECH & SOUND** Audio/Entertainment



**MP3 compatibility**

There are a number of ways to enjoy MP3 music files in your Volvo. If you'd like to connect your personal MP3 player to the audio system, there's a standard auxiliary audio input in the front centre armrest. Volume is conveniently controlled from the steering wheel or centre stack. Choosing the High Performance or Premium Sound audio system, there's also a USB port\* that allows you to fully integrate your iPod®, MP3 player or USB device with the audio system. Playlists, songs and artists are clearly displayed in the centre console, while your player will be charged at the same time. These audio systems also feature a MP3 and WMA compatible CD player.

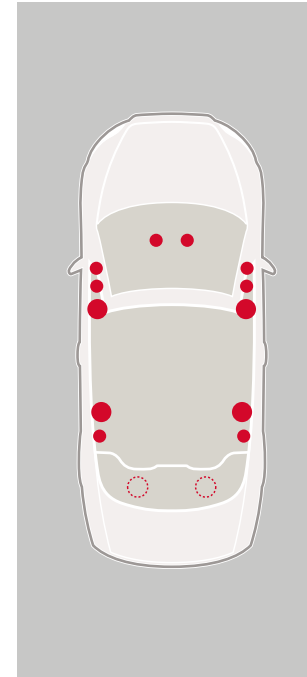
\*Not in combination with a 6-CD changer. Choosing a 6-CD changer, you can add a USB and iPod® Music Interface to connect your MP3 player to the audio system.

iPod is a trademark of Apple Computer Inc.

**2x130 W subwoofers**

The High Performance and Premium Sound system can be supplemented by two 130 W, 8-inch long-throw subwoofers for real bass punch. The loudspeakers are mounted behind the rear seat backrests and can be switched off from the menu in the centre stack.

**TECH & SOUND** Audio/Entertainment



**Premium Sound**

Our top-of-the line audio system designed for perfect sound dynamics, boasting 5x130 W and 12 high-end loudspeakers. With Dolby® Pro Logic® II Surround for an authentic audio experience in all seats. Add subwoofers, and a breathtaking 910 W sound awaits you. Premium Sound includes:

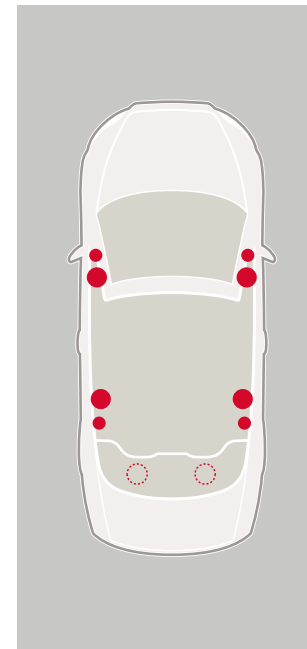
- RDS radio
- CD player with MP3 and WMA capability
- USB and AUX input in front centre armrest
- 5x130 W digital class D amplifier
- Dolby® Pro Logic® II surround sound with centre loudspeaker and digital sound processor
- 12 high-end Premium Sound loudspeakers
- Steering wheel integrated controls

Options: 2x130 W subwoofers. A 6-CD changer is available (replaces the CD player) – this option deletes the USB input, but a USB and iPod® Music Interface (accessory) can be added.

Dolby, Pro Logic, and the double-D symbol are registered trademarks of Dolby Laboratories.

**Premium Sound loudspeakers**

The twelve high-end loudspeakers in the Premium Sound system are powered by a 5x130 W digital amplifier. There are three separate drivers – woofer, midrange and tweeter – in each door, and in the side panels at the rear seats a similar set-up with woofer and tweeter. Each speaker has its own crossover filter to harmonise with the others. The latest generation Dolby® surround system with a centre loudspeaker and sound processor recreates authentic sound with a strong sense of presence for everyone in the car – a Volvo world first. The digital class D amplifier features new technology to provide extremely high efficiency, enabling it to generate the most audio power from the least amount of current. What's more, sound reproduction adapts automatically to whether the top is up or down and by using the menu in the centre stack, you can even choose between different audio settings to suit the kind of road you're driving on.

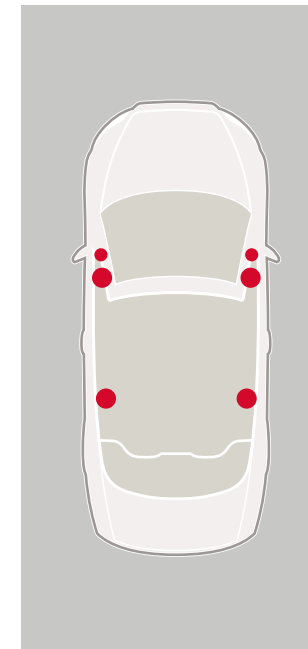


**High Performance audio system**

A versatile sound system for a more powerful audio experience. Each High Performance loudspeaker, in combination with the amplifier, promotes excellent transient reproduction and high power durability – quite simply superb sound. High Performance includes:

- RDS radio
- CD player with MP3 and WMA capability
- USB and AUX input in front centre armrest
- 4x40 W amplifier
- 8 High Performance loudspeakers
- Steering wheel integrated controls

Options: 2x130 W subwoofers. A 6-CD changer is available (replaces the CD player) – this option deletes the USB input, but a USB and iPod® Music Interface (accessory) can be added.



**Performance audio system**

A console-integrated radio and CD player. It sounds good, looks good and it's easy to use via controls integrated in the steering wheel. Performance equipment includes:

- RDS radio
- CD player
- AUX input in front centre armrest
- 6 loudspeakers
- 4x20 W amplifier
- Steering wheel integrated controls

Accessory: USB and iPod® Music Interface.

► = Accessory (can be fitted after you've purchased your car).



## PACK & LOAD

A world champion in versatility, Volvo has a proud heritage in providing smart solutions for both cargo and passengers – without compromising safety or comfort. So whatever you need to expand your world and the capabilities of your Volvo, here you'll find some practical equipment to make it happen.



### PACK & LOAD Compartment



#### ► Load hatch, rear seat

Long and awkward items, such as skis or snowboards, can be placed through the loading hatch between the rear seats. Add a ski bag and rear seat passengers are protected from soiled equipment.

#### ► Ski bag, interior

Adding a ski bag to the loading hatch between the rear seats facilitates loading of up to two pairs of skis or two snowboards, while rear seat passengers are protected from dirty equipment.



#### ► Rear seat cover

To use the rear seat space as an extra loading area, there's a durable seat cover specially designed for your Volvo. Quickly fitted, this helps protect the upholstery if you need to carry a messy load. It's also useful if you need to collect a pet or a passenger wearing dirty clothes – safety belts remain operational.



#### ► Organiser, spare wheel cavity

Designed to fit over the spare wheel, this organiser provides smart storage for small items in the boot. The organiser also creates a completely flat boot floor.

#### ► Luggage compartment mat, textile

This elegant textile mat allows you to maintain the attractive appearance of the luggage compartment even if you occasionally transport dirty loads. Reversible and waterproof, with colour-keyed textile on one side and plastic on the other. Only in combination with the spare wheel cavity organiser.

#### Load aid

The Volvo C70 offers 200 or 400 litres of luggage space, depending on whether you have the top down or up. To get to your gear more easily when the top is down, simply press the 'load aid' button in the boot. This raises the retracted hardtop to enlarge the opening. A built-in horizontal load divider helps ensure the hardtop can always be smoothly retracted.

### PACK & LOAD Carrying/Towing

#### ► Removable tow bar

The removable tow bar is easy to detach and refit when necessary. When not in use, it's completely out of the way.



#### ► Towbar-mounted bicycle holder

Take your bicycles conveniently and safely on the back of your Volvo. Loading is easy, and the holder can be tilted to allow access to the load compartment. The holder is easily mounted on the towbar and is equipped with tail lamp bar and number-plate holder. The holder takes up to three bikes and can be adapted for four bikes. And when not in use, the bicycle holder is collapsible to facilitate storage. Max load 51 kg (60 kg with adapter for four bikes). There's also a holder for up to two electrical bikes that can be supplemented with a removable ramp to facilitate loading.

## PERFORMANCE

In a Volvo, powertrain and chassis interact to strike the perfect balance between excitement and stability. And to further enhance the experience, additional technologies are available..

### PERFORMANCE Chassis

#### Five- or six-speed Geartronic automatic transmission

For the best of two worlds, there's the five- or six-speed Geartronic – a responsive automatic that's ideal for relaxed driving, tough conditions or towing. This also allows manual gear shifting so you can maintain a lower gear to bring up the revs or for the added assistance of engine braking. A special winter setting makes it easier to move off and maintain grip on slippery surfaces.

#### Six-speed manual transmission

The six-speed all-synchromesh manual gearbox offers fluid and precise gear selection. The sixth gear further improves comfort and fuel economy on the motorway. The smooth action of the clutch assures that you move off with confidence and grace.

#### Chassis

The wide wheelbase and the advanced chassis promote balanced handling and a high level of comfort. The body's unusually high torsional-rigidity enables the Multi-link rear and McPherson spring strut front suspension to cope predictably and consistently with all types of roads. The front and rear suspensions also interact to provide stable braking and smooth steering. In a curve, the rear wheels have a slight steering facility for added stability and steering response.

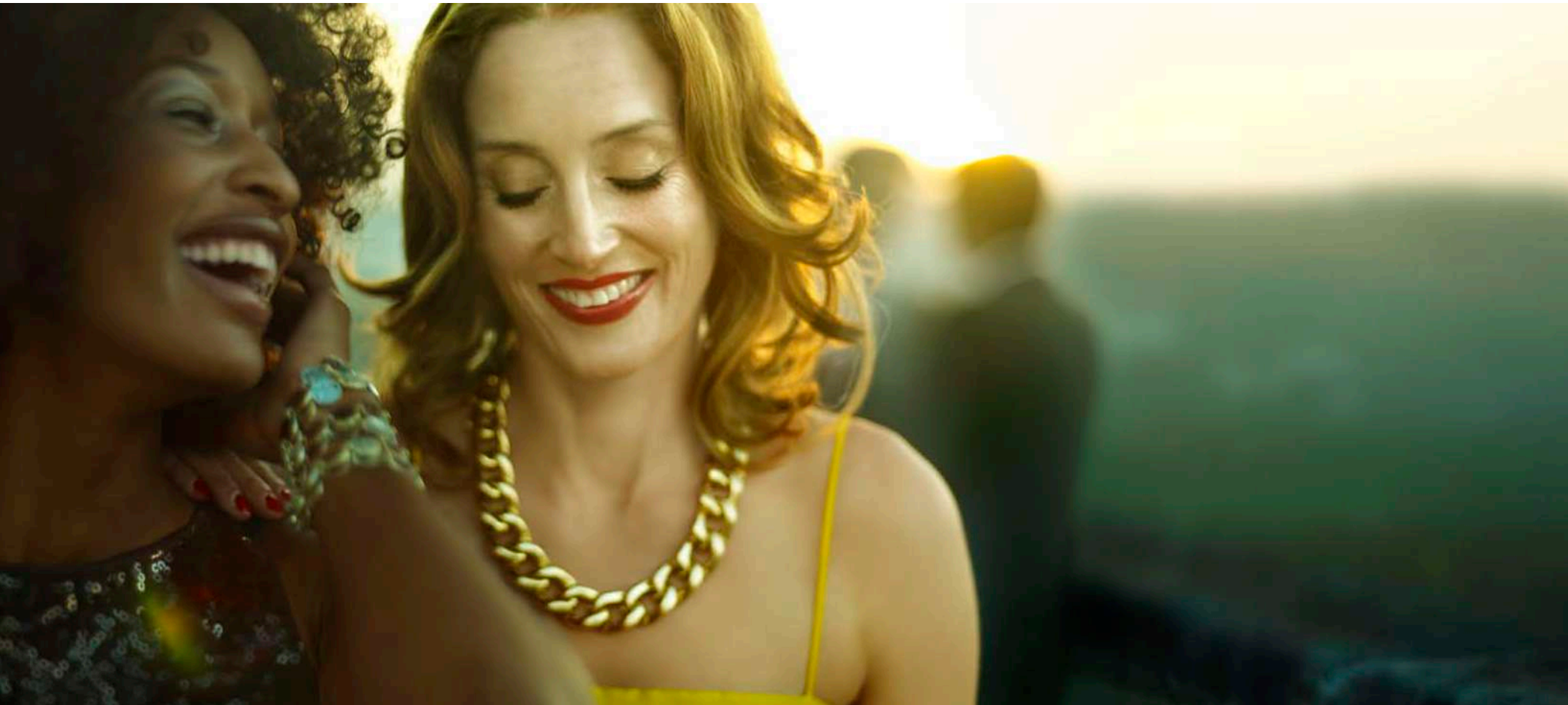






**THERE'S MORE TO LIFE THAN A VOLVO.**

Volvo. for life



**THAT'S WHY YOU DRIVE ONE.**

**VOLVO**

Volvo Car Corporation SP\_C70\_00015\_03-11. English.