



VOLVO XC60



CONTENTS

THE VOLVO XC60

City Safety	4
Supportive technology	6
Driver's environment	10
Passenger comfort	14
Versatility	18
Performance	20
In-car entertainment	26
Personal security	28
Safety & Environment	30

YOUR VOLVO XC60

Engines & Equipment	36
Style guide	38
Exterior design	40
Interior design	45
R-DESIGN	50
Features, Options & Accessories	52

www.volvocars.com



THERE'S MORE TO LIFE THAN A VOLVO. THERE'S THE ENERGY WHEN PEOPLE COME TOGETHER, THE ENERGY TO CROSS BORDERS AND CHALLENGE CONVENTIONAL WISDOM, THE ENERGY TO EXPLORE THE BEAUTY OF CONTRASTS, THE ENERGY TO GO THE EXTRA MILE BECAUSE YOU'RE CURIOUS, THE ENERGY TO FIND YOURSELF AND RELAX AMONG FRIENDS (WITHOUT BUMPING INTO THE VEHICLE THAT SUDDENLY BRAKES IN FRONT OF YOU). THAT'S WHY WE DESIGNED THE VOLVO XC60.

**From sidewalks to
switchbacks in the
blink of an eye.**

The Volvo XC60 is equally at home in all locations. Sportiness joins with ruggedness, style turns functional and luxury gets attitude. The best of two worlds come together to create a crossover of its own. Maybe just like you and your friends?



City Safety.

Probably the most important innovation for urban dwellers since take-away latte.

It can happen to anyone driving in slow city traffic. A millisecond lapse in concentration. The car in front slams on its brakes. Driving an ordinary car, you're most likely to run into the vehicle in front of you. Driving a Volvo XC60, City Safety can help spare you from this kind of urban nuisance. This laser-based technology continuously monitors the area in front of your XC60 and can brake automatically to help you avoid or mitigate a collision. City Safety comes as standard and is activated as you start the car. Good news for you, your passengers and – not least – anyone in the car in front of you.





Forward Sensing Module

Processes incoming signals from the front radar and digital camera to determine the car's position on the road and distance to other vehicles in front.

Front radar

Registers distance and speed of a vehicle in front at speeds over 30 km/h.

Laser sensor

The City Safety laser sensor spots slower or stationary vehicles in front at speeds below 30 km/h.

Digital camera

This camera helps the on-board intelligence to discern moving from stationary vehicles and register lane markings.

Blind spot cameras

Digital cameras help detect vehicles entering the blind spot.

So loaded with technology, it's almost human.

A closer look inside your Volvo XC60 will reveal some impressive on-board intelligence (in addition to yours, of course). Employing powerful microprocessors together with laser, radar and digital camera technology, this vehicle really can support if support is needed. City Safety helps you avoid low-speed collisions in urban traffic. At speeds over 30 km/h, Adaptive Cruise Control (ACC) can automatically maintain a safe distance from the car in front of you. Collision Warning with Auto Brake (CWAB) for highway driving can warn you if you're too close to the vehicle in front of you and can – if a collision can't be avoided – activate the brakes to help reduce the effects of a crash. On long trips, when it's easy to get distracted, Driver Alert Control (DAC) can remind you if you unexpectedly lose concentration. And by continuously monitoring your car's position on the road, Lane Departure Warning (LDW) will alert if you weave out of your lane without signaling. But most of the time you'll never notice these supportive technologies. The most intelligence demanding part of driving will always be your absolute privilege.

**100% fashion.
100% function.
100% Volvo.**

The Volvo XC60 is fit for any challenge along the road. Smart interior and exterior solutions combine with inherent muscular power to create capacity beyond the ordinary. It's a truly versatile character, and makes no attempts of hiding it.






Be connected.

The Volvo XC60 will elevate you in many ways. Behind the wheel there's no doubt who's in command. Everything, from the multi-adjustable driver's seat to the slightly angled centre console, is designed to empower you as the driver. Controls and instruments connect intuitively, and – when needed – there's on-board intelligence to support you.



A photograph showing the interior of a Volvo XC60, focusing on the panoramic sunroof. The sunroof is a large, dark-framed glass panel that spans across the roof of the car, providing a view of a clear blue sky. The interior is finished with light-colored, textured fabric. The sunroof is divided into two sections by a central black frame. The overall atmosphere is bright and airy.

A piece of heaven available in your Volvo XC60.

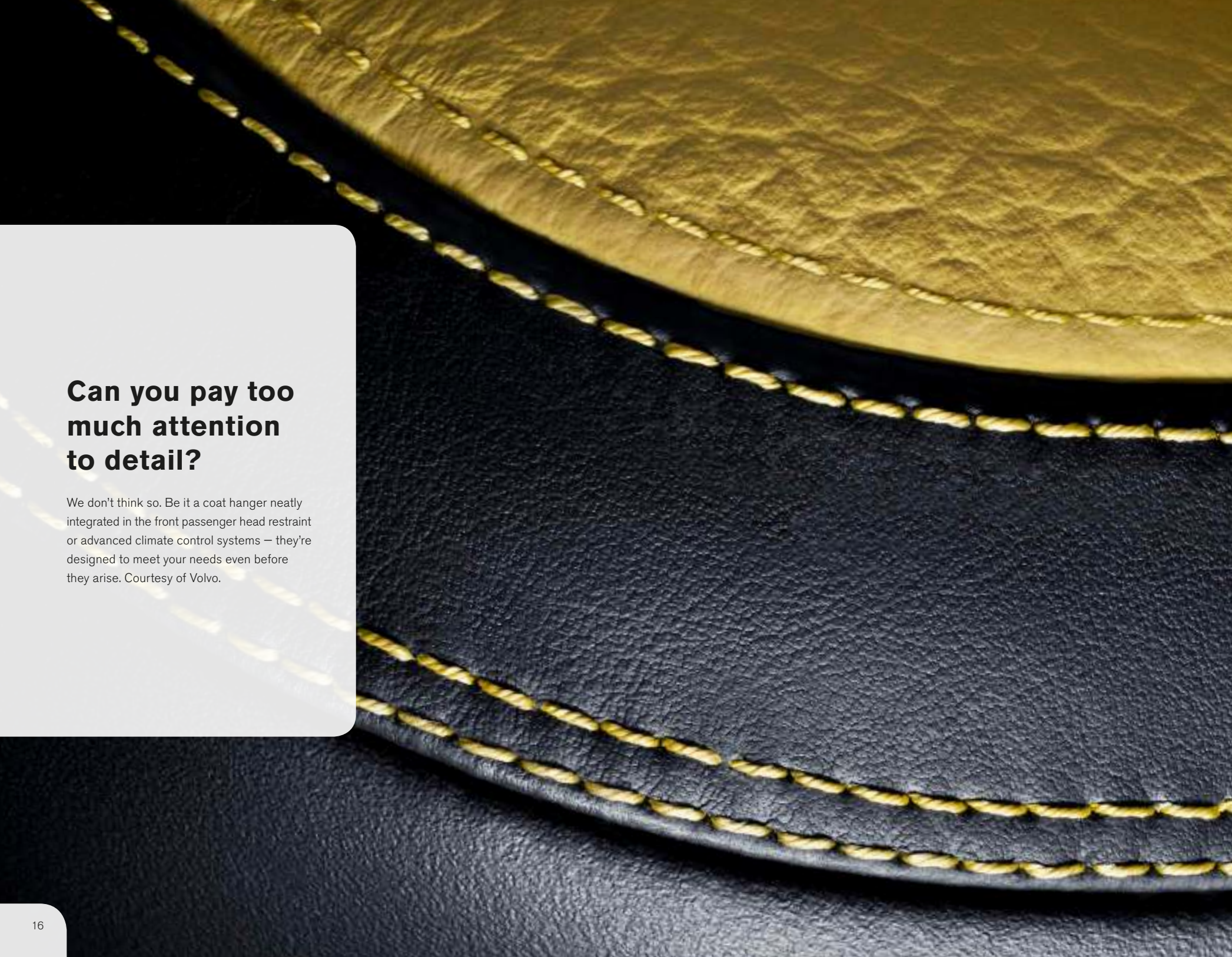
Imagine watching the clouds go by even if you're riding in the rear. The exclusive panoramic roof offers new perspectives on travelling. Part of it can be opened to let the air in. And when you've had enough sun, just activate the power curtain. The glass is dark tinted and laminated for your comfort and security. Of course, we have considered Volvo safety for you and your passengers. For safety reasons, the design of the panoramic roof is optimised and the two-piece glass is laminated.

The image shows the interior of a luxury SUV, focusing on the front and second rows. The seats are upholstered in black leather with beige leather accents on the seatbacks and seat cushions. The stitching is visible, adding to the premium feel. The center console is visible between the front seats, and the driver's side door is partially open, showing the interior door panel. The overall atmosphere is one of high-end craftsmanship and comfort.

“Happiness shared is happiness doubled”

Swedish proverb

Effortlessly, this spacious five-seater will accommodate friends and gear. Everyone travels in separate seats, surrounded by thoughtful amenities and haute couture safety. So lean back and turn on the mighty Premium Sound surround audio system. The only complaint you might hear is that you've reached the destination too soon.



Can you pay too much attention to detail?

We don't think so. Be it a coat hanger neatly integrated in the front passenger head restraint or advanced climate control systems – they're designed to meet your needs even before they arise. Courtesy of Volvo.





Test drive the power tailgate.

A highly versatile partner, the Volvo XC60 helps you deal with the challenges imposed by daily life. On the inside, there's clever storage and a spacious load compartment. To allow comfortable configurations of people and cargo, all passenger seats can be folded separately. The power tailgate can be opened using the remote control (very convenient when your hands are full). And to include small friends, integrated adjustable booster cushions will elevate children to new levels of comfort and safety.



Unleash your desire to drive.

A sporty coupe fused with a capable all-roader, the Volvo XC60 will charge into any journey with enthusiasm and poise. You can enjoy the instant power from a sporty six-cylinder petrol engine (304 hp or 238 hp) or an energetic five-cylinder turbodiesel (205 hp or 163 hp). Utilising the latest engine technology, these powerplants balance performance and care for the environment. And if you really want to cut your carbon dioxide emissions, you'll feel at ease with Volvo's new front-wheel drive 400 Nm DRIVE. No matter if you choose the boulevard, the highway, the no-way or any road in between – this Volvo crossover is ready to go.



All you need for a swing through town.

In the Volvo XC60 you don't have to choose between exhilaration and stability. The chassis is optimised to be sporty yet controlled. A low centre of gravity and 230 mm ground clearance add to the feeling of being in command. To further enhance all-road performance, there's an intelligent all-wheel drive system that continuously ensures power goes to the wheels with the best traction. Volvo's Dynamic Stability and Traction Control (DSTC), Roll Stability Control (RSC) and Trailer Stability Assist (TSA) interact with advanced chassis technology to help maximise driving confidence in all situations. Add the Four-C active chassis, and you can shift from soft comfortable cruising to serious driving dynamics at the push of a button. Press another button, and Hill Descent Control helps you down the steepest gradients.



How personal do you want to become with your car?

Do you prefer it to simply mind its own business and leave you alone? Or do you want it to guide you, to take care of incoming phone calls and even remind you to consider taking a break from driving? The Volvo XC60 can take on any personality you want. Just set your preferences using the intuitive on-board menu system. Then enjoy the ride. All navigation, audio and communication functions are conveniently operated from the steering wheel or the centre console. Nothing complicated, just liberating simplicity.

Have you heard about the new hot spot?

Because you love music, we created some of the car world's most formidable audio systems – each designed to harmonise with the acoustics of the interior. Like the Premium Sound system. With up to 910 W of uncluttered music via a digital class D amplifier, twelve high-end loudspeakers and an optional subwoofer, this is the ultimate in true-to-life sound. Dolby® Pro Logic® II surround sound ensures an equally authentic sensory sensation in all seats. And of course, connecting your iPod® is not a problem. So who will you put on the guest list?

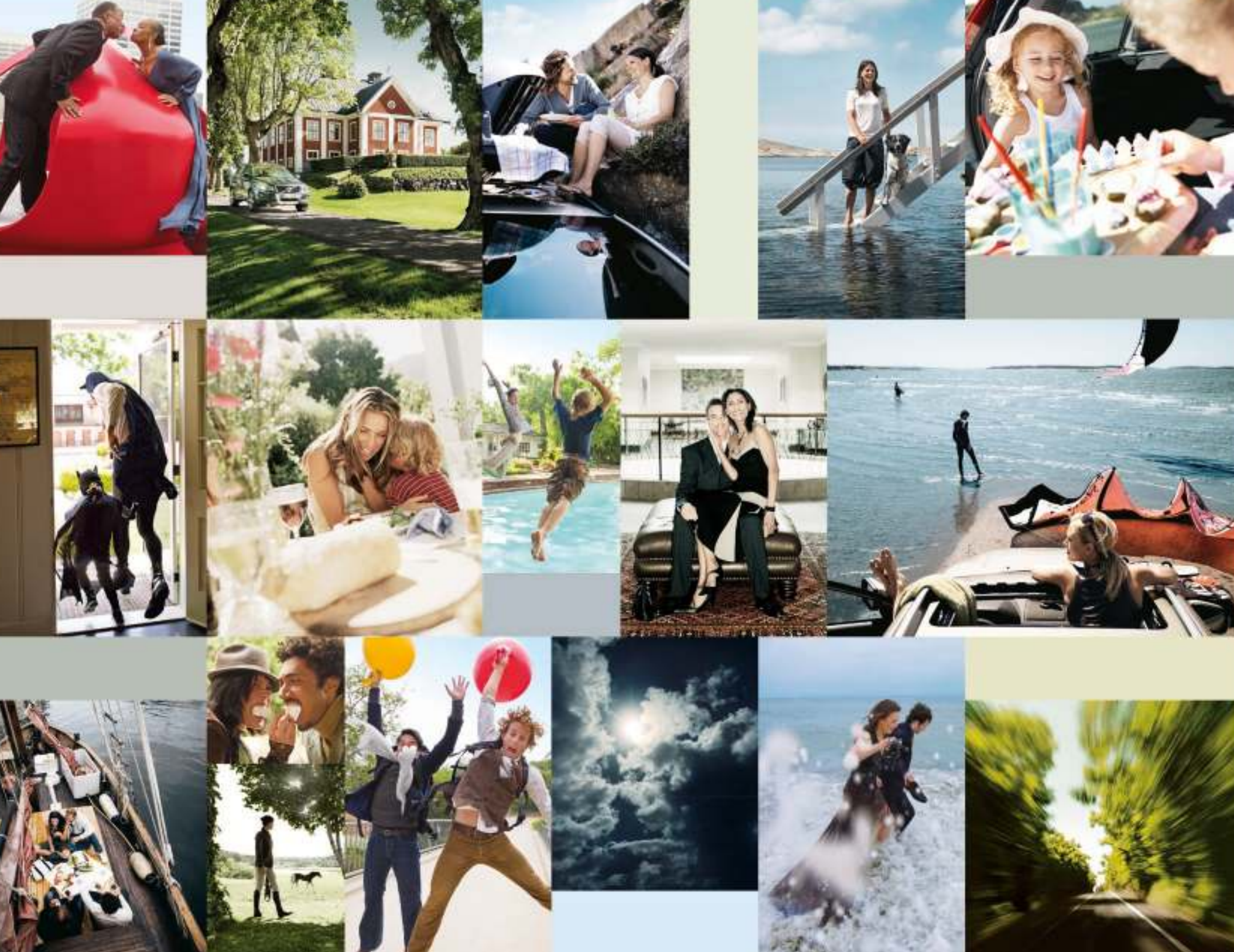
Dolby, Pro Logic, and the double-D symbol are registered trademarks of Dolby Laboratories.
iPod is a trademark of Apple Computer, Inc.





Stay cool, this beauty can look after itself.

We know, leaving a vehicle such as the Volvo XC60 isn't always easy. But be reassured there's enough theft protection technology to help deter most uninvited visits. Sturdy door locks, a lockable floor compartment and 360° laminated windows. And most important – the Volvo XC60 can help enhance your personal security on the way to and from your vehicle. For instance, Volvo's Personal Car Communicator (PCC) is a handy device that can tell if you've locked the vehicle and keep you updated on the security status.



THERE'S MORE TO LIFE THAN A VOLVO. THAT'S WHY WE DESIGN OUR CARS TO SUPPORT YOU IN ANY SITUATION ON THE ROAD. THAT'S WHY OUR SAFETY TECHNOLOGY HAS PUSHED AUTOMOTIVE DEVELOPMENT FOR MORE THAN EIGHTY YEARS. THAT'S WHY WE AIM FOR A FUTURE WHERE CARS DON'T CRASH. THAT'S WHY WE LEAD THE WAY TO ZERO EMISSIONS, AND OFFER ONE OF THE PREMIUM SEGMENTS STRONGEST RANGES OF LOW CO₂ ALTERNATIVES. AND THERE ARE ALL THE REASONS IN THE WORLD TO MOVE THE BOUNDARIES FOR WHAT'S POSSIBLE AND WHAT'S NOT. THAT'S WHY WE INNOVATE FOR LIFE.

Innovated for your enjoyment, the Volvo safety technologies will protect more than the fun of driving.

Across the world, Volvo equals safety. And that comes with good reason, because few carmakers can match our record of safety innovations and the commitment for safety that has guided us for more than 80 years. Of course, this makes us extremely proud. But we're not satisfied. Because we know what we want to achieve: zero accidents. This huge task calls for innovative thinking and a brand new approach to the way we design cars. Good news is we've already come a long way. For starters, our cars are more fun and engaging to drive than ever (because a bored driver will never be a safe driver). Neither is the technology needed any figment of the imagination – some is already available in your Volvo. This means driving a Volvo today is like having a first peek at a very exciting automotive future – a future where passionate engineering and design do more to help you get the most out of life.

After all, there's more to life than a Volvo.



TOW IN HARMONY.

When towing, Trailer Stability Assist (TSA) helps counteract snaking tendencies from a trailer.

KEEP THE BALANCE.

Roll Stability Control (RSC) senses an impending rollover and helps stabilise the vehicle if needed.

EYES IN THE BACK.

Park Assist and Park Assist Camera let you know what's going on behind your car when reversing.

PERSONAL GATEKEEPING.

Inspired by fighter aircraft technology, the Intelligent Driver Information System (IDIS) can help reduce your workload in stressful situations.

STAY ON TRACK.

Dynamic Stability and Traction Control (DSTC) improves handling, safety and fun in a wide range of challenging situations.

ALL-ROAD STABILITY.

Volvo's All-Wheel Drive (AWD) with Instant Traction™ enhances driving stability and traction in all weathers, all seasons and on all roads.

URBAN COLLISION AVOIDANCE.

City Safety – the world's first standard-fitted collision avoidance and mitigation technology – brakes your car automatically if you're about to run into a slower moving or standstill vehicle at speeds up to 30 km/h.

POSITION CONTROL.

Lane Departure Warning (LDW) warns you if you begin to drift between the lanes.

STAYING ALERT.

Driver Alert Control (DAC) alerts you if you begin to lose concentration and need a break.

AN EYE ON THE BLIND SPOT.

The Blind Spot Information System (BLIS) helps you detect vehicles entering your blind spot.

ON-ROAD ENLIGHTENMENT.

Active Bending Lights (ABL) with Dual Xenon technology expands your vision range when driving in the dark and provides considerably improved illumination around bends.

KEEPING A SAFE DISTANCE.

Collision Warning with Auto Brake (CWAB) warns if you're too close to a vehicle in front and helps brake the car automatically if a collision is imminent.

SMOOTH CRUISING.

Adaptive Cruise Control (ACC) automatically maintains your set speed and distance to the vehicle ahead of you.



Designed to catch the light brilliantly, this car also reflects a promise.

Thankfully, the automotive industry is moving away from fantasyland to the real world. Our journey towards a better environment started already in the early 70's. Then we were among the first carmakers to acknowledge the environmental downside of cars and to do something about it. Since then we are constantly innovating to reduce the environmental impact of the cars and how we make them.

Today's biggest challenge is, of course, to reduce the carbon dioxide emissions that cause climate change. Today we offer one of the premium segments strongest ranges of low CO₂ alternatives: the Volvo DRIVE variants. Utilising innovative powertrain technology together with advanced aerodynamics, low friction technology and lightweight materials, the DRIVE range is an important step towards zero emissions.

In near future we will introduce new technology such as plug-in hybrid vehicles that will further reduce CO₂ emissions and can be charged from a standard wall socket. And we're heavily engaged in the development of electrical vehicles – a technology that will dramatically reduce the environmental footprint of our cars and make them even more fun to drive.

Good for you, and for the world we share.



FUEL-SAVING DESIGN.

To reduce energy-loss from wind and roll resistance, we utilise advanced aerodynamic design, light-weight materials and low-friction technology. Together with state-of-the-art engine technology, this lowers your CO₂ emissions and helps you travel further on less fuel.

154 G CO₂ PER KM.

Our latest eco-progress, the front wheel drive Volvo XC60 DRIVE, satisfies itself with only 5.8 litres fuel per 100 km – for minimum emissions and maximum style.

RECYCLING.

To help minimise its total environmental impact, the Volvo XC60 already complies with proposed stringent European recycling directives.

FRESH CABIN AIR.

Continuously monitoring incoming air and shutting out carbon monoxide, ground-level ozone and nitrogen dioxide, Volvo's Interior Air Quality System helps ensure that the air you breathe in the car is cleaner than that outside when driving in heavy city traffic.

ALLERGY-TESTED INTERIOR MATERIALS.

All our upholsteries and interior textiles are tested for certain allergy-inducing or harmful substances and comply with Oeko-Tex Standard 100. And several interior metal details are tested with regard to contact allergies. Good for you, and for anyone who shares your ride.

MAXIMISED FUEL EFFICIENCY WITH DIESEL.

Volvo's advanced common rail turbodiesel technology ensures superior fuel economy and low CO₂ emissions – from the new CO₂ optimised front-wheel drive DRIVE variant to the all-wheel drive D5 AWD.

CLEANER EXHAUST.

Fast responding after a cold start, Volvo's advanced emission control eliminates between 95 and 99% of carbon monoxide, hydrocarbons and nitrogen oxides from petrol engine exhaust gases. The Volvo turbodiesels feature a particulate filter that removes about 95% of the particles from the diesel exhaust. All engines comply with stringent Euro 5 emission requirements.

BRAKE FOR ENERGY.

Everytime you brake, the battery is fed with extra power. Smart and fuel-saving.

ALLERGY-APPROVED INTERIOR.

Clean Zone Interior Package (CZIP) provides cabin air that is so clean it is recommended by the Swedish Asthma and Allergy Association.



THE CREATION OF YOUR VOLVO STARTS UNDER THE HOOD. A major part of the experience ahead of you is defined by the engine you choose. Is it maximum performance and a sporty engine character that make your heart tick? Or do you prefer relaxed cruising and the highest possible fuel mileage? Whichever engine satisfies your requirements, you will enjoy instant power and smooth running while state-of-the-art fuel management systems make the most of every micro-drop of fuel. Pick your engine, and enjoy the drive.

PETROL ENGINES

T6 AWD

auto
249 CO₂ g/km
10.7 l/100 km
304 hp
440 Nm

3.2 AWD

auto
234 CO₂ g/km
10.0 l/100 km
238 hp
320 Nm

2.0T

man/auto
199 CO₂ g/km
8.6 l/100 km
203 hp
300 Nm

DIESEL ENGINES

D5 AWD

man/auto
179/187 CO₂ g/km
6.8/7.1 l/100 km
205 hp
420 Nm

D3 AWD

man/auto
179/187 CO₂ g/km
6.8/7.1 l/100 km
163 hp
420 Nm

D3

auto
179 CO₂ g/km
6.8 l/100 km
163 hp
400 Nm

DRIVE

man
154 CO₂ g/km
5.8 l/100 km
163 hp
400 Nm

Technical data may be subject to change. Please talk to your Volvo dealer for the latest information. All technical data is preliminary.

EQUIP YOUR OWN VOLVO XC60. As you define your own style and specify your needs, choose one of Volvo's equipment levels – Kinetic, Momentum or Summum. These ample packages add luxury and comfort beyond the impressive standard equipment level and reflect our core belief that functionality and beauty go everywhere together. For more information about the different equipment levels, please contact your Volvo dealer or visit www.volvocars.com

STANDARD

40/20/40 split rear seat
 Adaptive brake light
 Air Condition (AC)
 Aluminium wheels 17"
 AUX input
 Belt minder, all positions
 Car setting memory in key remotes
 Charcoal decor inlays
 City Safety
 Cup holders, centre console
 Driver and passenger side airbags
 Dynamic Stability and Traction Control (DSTC)
 Electronic Parking brake
 Frontal airbags
 Front and rear seat 12V outlet
 Illuminated vanity mirror, passenger side

Inflatable Curtains (IC)
 ISOFIX child safety seat attachments, rear
 Lockable load space under load floor
 Performance audio package
 Pre-prepared restraints
 Remote control central locking
 Roll Stability Control (RSC)
 Roll Over Protection System (ROPS)
 Roof rails, black
 Side airbag
 Side Impact Protection System (SIPS)
 Temperature gauge, outer
 Three-point safety belts on all seats
 Trip computer
 Whiplash Protection System (WHIPS)

KINETIC

includes Standard equipment level plus the following:

Audio controls in steering wheel
 Cruise control
 Electronic Climate Control (ECC)
 Fog lights, front spoiler
 Illuminated vanity mirror, driver
 Interior Air Quality System (IAQS)
 Leather-clad gear knob
 Leather-clad steering wheel, Offblack
 Soft load cover

MOMENTUM

includes Kinetic equipment level plus the following:

Aluminium decor inlays
 Automatically dimmed inner rear-view mirror
 Grocery bag holder
 Hill descent control
 Power tailgate
 Puddle lights
 Rain sensor
 Retractable outer rear-view mirrors
 Textile/T-Tec upholstery

SUMMUM

includes Momentum equipment level plus the following:

Active Bending Lights (ABL)
 Aluminium wheels 18"
 Headlight washers
 Heated front seats
 Heated washer fluid nozzles
 Leather upholstery
 Park assist, rear
 Power seat, driver with memory
 Roof rails, bright
 Watch dial
 Water-repellent glass, front side windows

N.B. The contents in the equipment levels may vary from country to country. Please ask your Volvo dealer for further information.



WANT A DYNAMIC TOUCH? If stylish and sporty looks get your pulse racing, this may be the Volvo XC60 for you: Eriksberg T-Tec/textile Offblack upholstery in Anthracite Black interior with Brushed aluminium centre stack and door panel inserts, leather-clad steering wheel, Charcoal with aluminium inlay and leather-clad gear knob, Charcoal. Exterior colour Cosmic White metallic, Achilles 19" Diamond cut/Dark Grey matt aluminium wheels and exterior styling kit including front bumper bar, side-scuff plates and rear skid plate.



OR MODERN LUXURY? Some people prefer sophisticated, timeless elegance. If that sounds like you, your new Volvo XC60 can look like this: Leather Soft Beige upholstery in Sandstone Beige interior with Classic wood centre stack and door panel inserts, Leather/Classic wood steering wheel, Soft Beige and Leather/Classic wood gear knob, Soft Beige. Exterior colour Flamenco Red metallic and Merac 18" Silver Bright aluminium wheels.

COLOUR YOUR VOLVO. When it comes to the appearance of your Volvo, the choice of exterior colour, wheels and other styling items are probably your most important design decisions. For more exterior styling options and to build your new Volvo online, please visit www.volvocars.com

Clean colours

To reduce usage of environmentally hazardous solvents, all Volvo exterior colours are water-based. What's more, our painting facilities are among the cleanest in the world.



490 Chameleon Blue metallic



466 Barents Blue metallic



426 Silver metallic



614 Ice White**



481 Cosmic White metallic**



612 Passion Red*



477 Electric Silver metallic**
Inscription



484 Seashell metallic



492 Savile Grey metallic**



494 Terra Bronze metallic



495 Lime Grass Green metallic**



702 Flamenco Red metallic



452 Black Sapphire metallic**



019 Black Stone

Inscription

Inscription is our exclusive design programme for a truly distinguished look.

*Only available for XC60 R-DESIGN.

**Also available for XC60 R-DESIGN.

Please note: It's not possible to reproduce exact original shades in printed matter. Please ask your dealer to show you samples.



EXTERIOR STYLING. IT'S PERSONAL. Loaded with style and attitude, the Volvo XC60 has a true crossover character. And to make it even more distinct, we developed a selection of specially-designed wheels and styling accessories. For a strong individual statement, inside and out.

Front bumper bar

This sporty design element, integrated in the front bumper, equips the Volvo XC60 with an even more powerful elegance. Available in an exclusive matt aluminium finish to match other exterior styling extras.

Side scuff plate

The stylish matt aluminium finish side scuff plates add an extra touch of attitude to the Volvo XC60 – perfectly matching the design of the sill and other Volvo XC60 exterior styling extras.

Running boards, integrated

As an alternative to the side scuff plate, the running boards are smoothly integrated with the sills to enhance the versatile character of the Volvo XC60. You can stand on these to reach the roof and they also make it easier to step in or out of the vehicle.

Illuminated instep plates

Enter in style. Open the front door, and the Volvo logo embedded in the brushed aluminium footstep lights up together with the interior lighting to provide an illuminated welcome.

Skid plate, rear bumper

Lead the way in style. This matt aluminium finish rear skid plate is available for one or two visible tailpipes.



EXTERIOR DESIGN Aluminium wheels



Merac 7.5x18"
Silver Bright



Zephyrus 7.5x18"
Diamond cut/Anthracite matt



Segin 7.5x17"
Silver Stone

ACCESSORY Aluminium wheels



Talitha 8x20"
Diamond cut/Dark Grey matt



Talitha 8x20"
Diamond cut/Silver Stone



Erakir 8x19"
Diamond cut/Anthracite matt



Erakir 8x19"
Black Chrome



Erakir 8x19"
Diamond cut/Silver Stone



Achilles 7.5x19"
Diamond cut/Silver Stone matt



Achilles 7.5x19"
Diamond cut/Dark Grey matt



IMAGINE YOUR NEW INTERIOR. Crafted according to your requirements, the interior of your Volvo can take on any number of personalities. Choose between two interior colours (Anthracite Black and Sandstone Beige) and let your senses guide you among the upholstery variants – including contemporary textile, sporty T-Tec/textile and exclusive genuine leather. Pick the interior that suits you and add the finishing touch with the interior trim (real wood or aluminium), steering wheel, gear knob and floor mat of your choice. After all, you're probably going to spend a lot of time here.

Ergonomic design Developed in co-operation with ergonomic specialists to provide generous support for the body during hours of driving, the seats in the Volvo XC60 are among the most comfortable in the automotive world. Multiple adjustment possibilities and adjustable lumbar support make it easy to find the perfect driving position.



Leather
This upholstery affords the Volvo XC60 an atmosphere of luxury. It's a hide quality that's smooth and durable – with a fine grain pattern on the centre panels and a more coarse grain pattern on the outer panels. Like all Volvo leather, it's organically tanned and ages beautifully.



Eriksberg T-Tec/textile
This sporty looking upholstery combines two materials: finely woven textile upholstery trimmed with ultra-modern T-Tec – a synthetic skin inspired by wetsuits and durable outdoor gear.



Lomma textile
A finely woven fabric with a contemporary feel and finish. Centre panels are finely patterned while outer panels are plain.

INTERIOR DESIGN Anthracite Black



Leather-clad steering wheel,
Charcoal



Leather-clad steering wheel,
Charcoal with Silk metal inlay



Leather/Classic wood steering wheel,
Charcoal with Silk metal inlay



Brushed aluminium trim



Classic wood trim



Nordic Light Oak trim



Leather-clad gear knob
Charcoal, manual



Leather-clad gear knob
Charcoal, Geartronic



Leather/Classic wood gear knob
Charcoal, Geartronic



Leather Offblack, G100
Nordic Light Oak centre console, Charcoal leather-clad steering wheel and gear knob



Leather Offblack/Lemon Green, G107
Brushed aluminium centre console, Charcoal leather-clad steering wheel and gear knob



Eriksberg T-Tec/textile Offblack/Charcoal, G600
Brushed aluminium centre console, Charcoal leather-clad steering wheel and gear knob



Lomma textile Charcoal, G000
Brushed aluminium centre console, Charcoal leather-clad steering wheel and gear knob

Seat colour	Interior colour	Leather-clad steering wheel	Dashboard	Door inserts/door panels	Carpeting	Roof lining
Offblack	Anthracite Black	Charcoal	Offblack	Offblack	Offblack	Soft Beige
Lemon Green/Offblack	Anthracite Black	Charcoal	Offblack	Lemon Green/Offblack	Offblack	Soft Beige

INTERIOR DESIGN Sandstone Beige



Leather-clad steering wheel,
Soft Beige



Leather-clad steering wheel,
Soft Beige with Silk metal inlay



Leather/Classic wood steering wheel,
Soft Beige with Silk metal inlay



Brushed aluminium trim



Classic wood trim



Leather-clad gear knob
Soft Beige, manual



Leather-clad gear knob
Soft Beige, Geartronic



Leather/Classic wood gear knob
Soft Beige, Geartronic



Nordic Light Oak trim



Leather Soft Beige, G112
Classic wood centre console, Soft Beige leather-clad steering wheel and gear knob



Leather Soft Beige/Espresso Brown, G116
Nordic Light Oak centre console, Soft Beige leather-clad steering wheel and gear knob



Eriksberg T-Tec/textile Soft Beige, G612
Nordic Light Oak centre console, Charcoal leather-clad steering wheel and gear knob



Lomma textile Soft Beige, G012
Brushed aluminium centre console, Charcoal leather-clad steering wheel and gear knob

Seat colour	Interior colour	Leather-clad steering wheel	Dashboard Upper part/lower part	Door inserts/door panels	Carpeting	Roof lining
Soft Beige/Espresso Brown	Sandstone Beige	Soft Beige	Espresso Brown/Sandstone Beige	Espresso Brown/Soft Beige	Mocca Brown	Soft Beige
Soft Beige	Sandstone Beige	Soft Beige	Espresso Brown/Sandstone Beige	Sandstone Beige/Soft Beige	Mocca Brown	Soft Beige

Please note: Selecting a Sandstone Beige interior, you can opt for the leather-clad steering wheel and gear knob in Charcoal or Soft Beige. Talk to your Volvo dealer.

RDESIGN



Dynamically expressive. Flawlessly synchronized. Beautifully balanced. And that's just the sports chassis.

With the Volvo XC60 R-DESIGN variant, the well-equipped Volvo XC60 acquires even more confidence – inside and out. Boldly provocative yet tastefully reserved, the exclusive R-DESIGN styling elements express a definitive passion for sport. From the R-DESIGN grill badge, to the 90 mm tailpipes, the Volvo XC60 R-DESIGN exudes confidence at every turn. Yet, it's in the turns where the sports chassis really compliments the swift agility and sweeping artistry of this bold crossover.

Silk metal grille

The distinctive, silk metal finished design details include the front grille and lower air in-take surrounds, lower port flares, and side mirror caps.

Exterior accents

The grained, colour-coordinated lower body panels help accentuate the silk metal finish of the rear skid plate and side scuff plates.

Sports tailpipe

From behind, the dual 90 mm tailpipes give the XC60 R-DESIGN a powerful, no-nonsense demeanour.

Sports chassis

Perceptibly yet subtly different, the shocks, springs and anti-roll bars are adjusted and tuned to be firmer and more balanced. The result is improved control and a sportier, road-hugging drive.

Sports steering wheel

Get to grips with this exclusive leather-clad 4-spoke sports steering wheel with R-DESIGN logo.

Combi instruments

The attractive blue watch-dials of the speedometer and rev counter give the gages a profile of distinction.

Sports gearshift knob

Perforated leather gives the gearshift knob and gaiter a performance-ready look and feel.

Sports pedals

Racetrack-inspired to enhance the driving experience – enjoy the feel of these ridged sports pedals.

R-DESIGN upholstery

Unique smooth leather R-DESIGN upholstery available in three variants: Offblack/Soft Beige, Soft Beige/Offblack and Offblack/Offblack – with well-padded side bolsters and the R-DESIGN logo embossed on unique front sports seats.

R-DESIGN deco inlay

The centre stack features a contemporary aluminium inlay with radiant pattern design.

Sports floor mats

These black, ribbed and richly tufted sports floor mats set the stage, front and back.

Cratus aluminium wheels

Silver Bright matt finish five spoke 18" Cratus wheels are standard with the option to up size to 20".

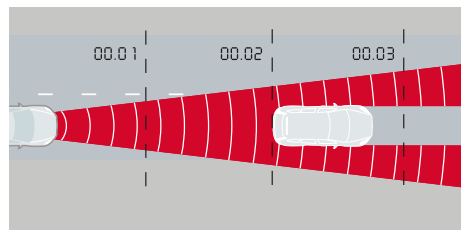
A selection of R-DESIGN items is also available in our Accessory range. Please contact your local dealer for further information.

SAFETY

At the core of every car we make, state-of-the-art technology helps support the driver and protect the occupants. And to further enhance the Volvo safety experience, there's a range of supplementary safety technology – for more performance and peace of mind.



SAFETY Preventive



Adaptive Cruise Control (ACC) with Distance Alert

Helping the driver to keep a safe distance from vehicles in front at speeds over 30 km/h, ACC is a supportive partner for a more relaxed driving experience on long journeys and motorways. Just select the desired speed and the minimum time gap to the vehicle in front. When the radar sensor detects a slower vehicle in front, the speed automatically adapts to that vehicle. And when the road is clear, the car resumes the selected speed. If ACC is disengaged and a vehicle in front comes too close, Distance Alert activates a red warning light in the lower section of the windscreen to help you keep a proper distance.

Collision Warning with Auto Brake (CWAB)

Primarily designed for highway driving, CWAB can warn you if you're too close to a vehicle in front and – if a collision can't be avoided – can activate the brakes to help mitigate the impact. Within a range of 150 metres, a radar sensor behind the grille and a digital camera behind the windscreen continuously monitor the distance to the vehicle driving in front of you. If the vehicle suddenly brakes (or is stationary) and Collision Warning senses that a collision is likely to happen, it will alert you to act with a flashing red warning light on the windscreen along with an audible alarm. Moreover, this technology supports driver-initiated braking by pre-charging the brakes to quickly prepare for panic braking and help shorten the reaction time. If you don't react to the warning and a collision is imminent, the brakes will activate automatically.



Driver Alert Control (DAC)

Up to 90% of all traffic accidents are caused by driver distraction. Driver Alert Control is a unique technology that can help alert a tired or distracted driver at speeds over 65 km/h. Using signals from a digital camera to monitor the road ahead along with data from steering wheel movements, DAC can compare erratic behaviour to your normal driving style. If DAC detects that your driving behaviour shows signs of drowsiness or distraction, you receive an audible warning. At the same time, a message is displayed in the instrument panel suggesting it might be time for a break.

Lane Departure Warning (LDW)

At speeds over 65 km/h, Lane Departure Warning can help prevent single-vehicle road departures as well as collisions caused by temporary distraction. This function uses the digital camera to register the lane markings and help monitor the car's position on the road. If you weave out of your lane, LDW will alert with an audible signal. If you intentionally cross a lane marker using the direction indicators, LDW is not activated.

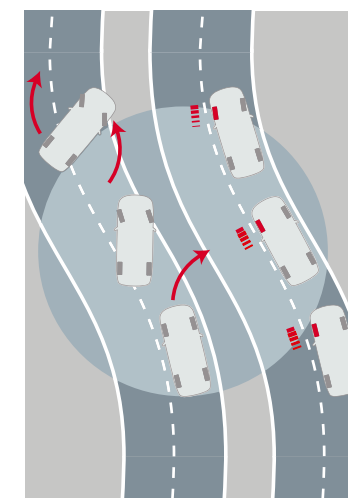


SAFETY Preventive



City Safety

City Safety collision avoidance technology is a Volvo world-first standard feature for safer urban driving. At speeds up to 30 km/h, this laser-based technology can sense if a vehicle in front within 6–8 meters is at a standstill or is moving slower. If City Safety senses an impending collision, the brakes are pre-charged to act faster on your response. And if you don't brake, City Safety automatically applies the brakes and switches off the throttle to help mitigate the effects of a collision. And if the speed difference between your car and the vehicle in front is 15 km/h or less, City Safety can even help you avoid a collision. City Safety is activated when you start the car.



Dynamic Stability and Traction Control (DSTC)

By helping prevent fishtails, spinouts, and rollovers, stability control technology like DSTC has been described as one of the most vital safety advances of the past decade. At the core of DSTC, sensors registers the car's direction and roll rate. The system compares this with steering wheel movements as well as the actual rotation of the car's wheels. DSTC is able to detect a potential skid and help counteract this by reducing the engine's power output, or braking on one or more wheels. Further developed in the XC60, this technology also adds to stability in dynamic driving where the vehicle is exposed to high lateral forces.

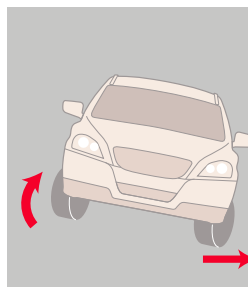


Water-repellent front side windows

To help offer far better visibility in the rain, these front side windows help repel water as you drive. The hydrophobic surface treatment turns water into small drops that will be blown away by the force of the wind. This also gives you the benefit of less ice or frost in winter conditions.

Intelligent Driver Information System (IDIS)

To help avoid distractions during critical driving situations, IDIS constantly analyses your driving and will delay secondary information from the car or one of its onboard systems – such as the GSM phone – when it detects intense steering, braking or acceleration. As soon as things calm down, the phone call or the delayed information is presented. IDIS can be set up to let GSM calls through in all driving situations.



Roll Stability Control (RSC)

In the event of an emergency manoeuvre, Volvo's Roll Stability Control (RSC) can step in to help prevent the vehicle from rolling over. It features a gyroscopic sensor that registers the vehicle's lean angle and rollover risk. If required, RSC will cut engine power or brake one or more of the wheels just enough to reduce the centrifugal force and help regain balance.



Adaptive brake light

Active at speeds above 50 km/h, the adaptive brake light can sense the difference between normal and panic braking. If it is a panic situation, all the brake lights will flash at a rate of four times per second. Once your speed slows to below 10 km/h, the lights stop flashing and hazard lights flash instead.



Active Bending Lights (ABL)

Compared to conventional halogen headlamps, Active Bending headlights with Dual Xenon technology expand your vision range by about 230%. This means you'll be helped to gain 45 metres more for braking. And using motorised lamps that turn up to 15° in either direction, this technology gives a 90% boost to your vision round bends at night. You can enjoy highly effective low beam illumination on narrow, winding roads and extremely powerful full beams on the motorway. A daylight sensor disengages the adaptive function during daytime to extend its lifespan. Independent of the load, these headlights self-adjust to maintain the correct angle to the road – even during hard acceleration or braking.



In a Volvo, safety is about interaction. Because it's not the number of safety features that determines how safe a car is. It's how well they seamlessly interact to help keep the occupants out of harm's way.

In a rear impact the rear deformation zones will help absorb crash energy. The fuel tank is designed to remain well protected in front of the rear axle. The head restraints help protect the neck and spine, and Volvo's unique Whiplash Protection System (WHIPS) cradles the front seat occupants in a controlled manner to help prevent whiplash injuries.

In a side impact Volvo's unique Side Impact Protection System (SIPS) helps distribute the crash forces across the car's body, away from the occupants. The side airbags in the front seats help protect the chest and hip, while the Inflatable Curtain (IC) adds head protection.

In a rollover a gyroscope activates Volvo's Roll Over Protection System (ROPS). The safety belt pre-tensioners deploy to help keep occupants more securely restrained, and the Inflatable Curtain (IC) helps provide head protection. Additionally, the safety cage is reinforced to help keep the passenger compartment intact.

In a frontal collision the patented frontal structure will yield to help absorb and disperse crash energy. The compact powertrain is designed to help optimise deformation. Inside the car, safety belts interact with the collapsible steering column and dual-stage airbags to help keep the occupants out of harm's way. Pre-prepared restraints – a unique Volvo technology – helps optimise the various restraint systems for expected crash force. A lower crossmember helps protect occupants in an oncoming car with lower positioned bumpers.



Restraint technologies

In a collision, Volvo's restraint technologies interact to help reduce the impact. The **safety belts with pre-tensioners** activate within a few thousandths of a second in the event of a collision or rollover and tighten the belt to help keep the occupants securely restrained. The front seat safety belts then release a little so that the driver and passenger are cushioned by the airbags in a controlled manner. Helping to optimise protection, the **dual-stage airbags** adapt the level of inflation depending on the force of the collision. The driver's airbag also interacts with the deformation of the collapsible steering column. **Side airbags** in the front seats help reduce the risk of serious injuries in a side collision. In a collision or rollover, the **Inflatable Curtain (IC)** helps protect the heads of both front and rear outboard occupants. It also stays inflated for some seconds to provide prolonged protection in multiple accidents. And to help protect children in the rear seat, IC interacts with the two-stage integrated booster cushions and the belt load limiters.



Passenger airbag cut-off switch

This switch allows you to disengage the passenger airbag using the car key. When the airbag is switched off, you are notified via a message in the roof console display. The force of the passenger airbag is designed to help protect adults – children risk serious injury. Therefore, the airbag must first be disengaged if you intend to put a person shorter than 140 cm in the front passenger seat.

Energy-absorbing frontal structure

In developing this Volvo's protective qualities, we have focused on frontal collisions at both higher speeds and with heavier vehicles. The patented frontal structure with its sizeable deformation zones in different kinds of steel will yield to help absorb crash energy. The compact powertrain is designed to help optimise deformation. The unique geometry of the frontal structure and longitudinal steel struts in the doors help disperse crash energy away from the front to the rear of the car, further helping to reduce the strain on the occupants. A steel crossmember under the dashboard further helps keep the cabin intact.

Side Impact Protection System (SIPS)

SIPS is a Volvo unique safety system that has been developed to help protect where occupants are most exposed to the crash forces. The steel framework of the car – including the front seats – is designed and reinforced to help displace the impact of a side-collision away from the occupants to other parts of the car body and help prevent intrusion into the cabin. The extremely strong side structure contains ultra-high strength steel and softer grades of steel to help withstand a severe side impact – even with a larger vehicle. The Inflatable Curtain (IC) for all the outboard occupants and the front seat side airbags interact with the SIPS to help provide further protection. In the rear seat, the combination of extended IC and Volvo's integrated two-stage booster cushion with progressive safety belt load limiters helps protect children who have grown out of their rearward facing child seat.



Whiplash Protection System (WHIPS)

Integrated in the front seats, Volvo's WHIPS cradles the occupant to help reduce the risk of whiplash injury (one of the most common types of traffic injury and often the result of a low-speed rear impact collision). The function is activated by a collision of sufficient force from behind. Independent research has shown that WHIPS is one of the most effective systems in the world and can reduce the risk of long-term invalidity by 50%.

SAFETY Child safety

Roll Over Protection System (ROPS)

A robust roof structure together with Volvo's unique Roll Over Protection System (ROPS) help protect the occupants in a rollover situation. ROPS is activated by a gyroscope that monitors the vehicle's leaning angle. The safety belt pre-tensioners are activated at every seat to help keep occupants more securely restrained. At the same time, the Inflatable Curtain (IC) deploys and remains inflated for several seconds to help provide extended protection.

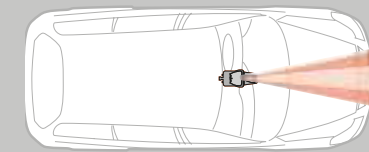


Volvo's child safety programme

To further enhance protection for children, we offer a child safety programme that is among the most comprehensive in the car world. Because infants have large heads and weak necks*, we know that a child up to the age of 3-4 travels most safely facing the rear. Volvo's rear-facing child seats help provide maximum protection in a wide range of collisions. Children who have outgrown the child seat travel most safely seated on a booster seat, secured with the car's safety belt.

* In a frontal collision at 50 km/h, the head of a six-month infant can be exposed to forces corresponding to a load of 100 kg!

Please note: If the front passenger seat airbag is switched on, children under 140 cm in height should never be seated in the front seat – not in conjunction with a child seat, a booster cushion or under any other circumstances.



Pre-prepared restraints

The restraint technologies of your Volvo are designed to help provide maximum protection while minimising strain on the occupants. Using new technology including a windscreen laser-sensor, this standard safety feature continuously monitors objects in front of the car at all speeds. This makes it possible to prepare and adapt the safety belts and airbags for expected crash force and thus help optimise protection in a low or mid-severe frontal collision.



► Infant seat (up to 13 kg)

Infants, from newborns up to about 1 year of age, travel safely backwards in this comfortable seat. It's installed using the car's safety belt. And for extra convenient installation using the car's ISOFIX attachments, an ISOFIX base can be added. Side wings help protect in a side impact, and the headrest and five-point harness are easily adjusted. The headrest is padded for a comfortable sleep and there's a canopy to block the sun. What's more, the infant seat is easy to carry and can be used as a babysitter.



► Convertible child seat (9–25 kg)

From the age of 9 months to about 6 years of age a child can continue to be seated backwards in this new child seat. Advanced design helps provide world-class protection and flexible seating for many years. The seat is fitted using the car's safety belt and is easily adjusted to help optimise comfort and safety. An integrated support leg helps facilitate safe backward installation. We recommend that children be seated backwards as long as possible. But when a child grows bigger (15–25 kg) and can not comfortably be seated facing to the rear, this seat can also be used as a forward-facing booster cushion that puts a child at the correct position for the car's safety belt.



► Booster seat (15–36 kg)

Volvo's new booster seat helps position a child at the correct height for the safety belt and is designed to optimise side impact protection. The headrest and width adjust easily to enhance comfort, and the backrest can be reclined when the child wants to rest.



Two-stage integrated booster cushions (15–36 kg)

These integrated booster cushions help ensure that children sit comfortably and safely. They position children at the correct height for the safety belt adjust to two heights to accommodate children of different sizes, so smaller children can be seated higher to enjoy a more comfortable ride. And as the children grow, seat height can be adjusted accordingly. This optimises safety belt geometry, and will – together with the built-in progressive safety belt load limiter – help reduce the strain on the child's neck and chest in an impact. In a side impact, the booster cushions will interact with the Inflatable Curtain (IC) to help protect children. The booster cushions conveniently fold up from the outboard rear seats and are easily folded into the rear seat cushion when they're not needed.

Power child safety lock

The power child lock enables you to conveniently lock the rear doors and rear power windows from the driver's seat and prevent them from being opened from the inside.

SAFETY Security

HomeLink®

With buttons integrated in the sun visor, HomeLink® allows you to operate remote controlled home appliances – such as garage door, home alarm and exterior lighting – without leaving the car.

HomeLink is a registered trademark of Johnson Controls Technology Company.

360° laminated windows

Laminated glass in all windows (including the optional panoramic roof) turn an attempted smash-and-grab into a time consuming ordeal. They also enhance sound comfort in the cabin and contribute to UV protection. Additionally, this option also includes water-repellent glass in the front side windows for improved visibility in wet weather.

► = Accessory (can be fitted after you've purchased your car).

SAFETY Security



Personal Car Communicator (PCC)

PCC is an advanced remote control that combines keyless drive with two-way communication with your Volvo. Keep the PCC with you and the car unlocks automatically as you pull the door handle. Start the engine by pressing a button on the dash, lock the car by pressing a button in the door handle. Later in the day, if you're wondering whether you've locked the car, PCC can tell; no matter where you are. On your return to the car – within a radius of 60 to 100 metres – pressing the PCC information button will give you a current report on its lock and alarm status.



Volvo On Call

Activating automatically if any of your car's airbags are deployed – or at the touch of a button – Volvo On Call is Volvo's roadside assistance and emergency service. Not only does it put you in direct contact with a Volvo On Call operator, a built-in GPS system allows them to pinpoint your location and get help to you as soon as possible. The system can also alert you to an attempted break-in, and if the car is stolen it can be traced via satellite.

Approach and Home Safe Lighting

Activated with the remote control or Personal Car Communicator, Approach Lighting provides a warm reception on a dark night. This consists of interior and side lights – ground lighting too, if you choose it. Home Safe Lighting is activated with the headlight stalk as you leave the car and it provides a similar courtesy when exiting your car. This feature includes a dipped beam from the headlight to accompany you to your door.



COMFORT

A Volvo is always designed for more than one. Our technology aims to enhance the feel-good factor for everybody with the privilege of riding in a Volvo. And to further improve comfort and convenience, there's a range of clever equipment – customised for your Volvo and the people inside it.



COMFORT Seats



Heated seats, front and rear

Adjustable in three settings, heated seats for the driver and front seat passenger add to comfort on those cold mornings. And to enhance comfort for friends in the rear seat, this convenience is also available for the outer rear seat positions.

COMFORT Climate



Panoramic roof

This exclusive panoramic roof will further enhance the experience of air and light for everyone inside the Volvo XC60. The front section can be opened at the push of a button, either by sliding it over the rear part, or by tilting it in the rear end. To help maintain climate comfort on sunny days, there's a power operated roller curtain. Dark tinted laminated glass increases comfort and security. It also helps protect from UV radiation. For safety reasons, the design of the panoramic roof is optimised and the two-piece glass is laminated.

Electronic Climate Control (ECC)

Electronic Climate Control (ECC) maintains the cabin temperature you choose and can be set independently for the driver and front passenger. Further contributing to your health and comfort, Volvo's unique humidity sensor helps ensure cabin air has an appropriate level of humidity according to the outside climate.

Interior Air Quality System (IAQS)

Volvo's IAQS continuously monitors incoming air and will, if necessary, temporarily close external air vents to shut out carbon monoxide, ground-level ozone and nitrogen dioxide. Meanwhile, an active carbon filter protects the occupants from other harmful gases and unpleasant odours. This helps ensure that the air you breathe in the car is cleaner than that outside when driving in heavy city traffic and tunnels.

Clean Zone Interior Package (CZIP)

CZIP comprises a series of modifications to further improve the interior atmosphere. Materials are chosen carefully to avoid harmful fumes, and surfaces are smooth so they're easy to clean. On days when it's at least 10°C outside, opening the car by remote triggers a 60-second ventilation cycle. This results in cabin air approved by the Swedish Asthma and Allergy Association.

► Sunshades

Easily attached to the rear door and load compartment windows, these help reduce the heat and glare of direct sunlight. Simple to remove when they're not needed.

Engine and cabin heater, fuel driven

A fuel-driven heater will make your car easier to start, help reduce environmental impact and warm up the cabin. Start the heater directly, or set the time you'd like to enter your warm and defrosted car. With a remote starter you can activate the heater without going out to the car. And if your car is equipped with Volvo On Call, you can send an SMS to your car from your mobile phone to start the heater.

COMFORT Storage



Front centre armrest, multifunctional

The central aisle of the cabin incorporates several facilities. Two cup holders are concealed by a roll-top cover. There's a handy storage space beneath the armrest, and special recesses for small items. Folding back the upper part of the armrest will provide a convenient table for the rear seat passengers. The armrest also features an AUX input and – depending on your choice of audio system – a USB port to connect your MP3 player to the car's audio system.

► Front storage pack

This is a smart way to keep small items in order. Consists of two removable storage boxes with lid (for the left and right door respectively) and an elastic net pocket located on the front passenger side of the tunnel console.



Sunglass holder

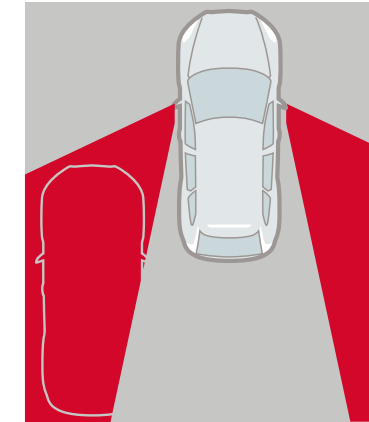
Fitted in place of any of the entry handles in the front, this holder keeps your glasses or sunglasses within reach.

TECH & SOUND

Employing the latest information technology, your Volvo is prepared to support and entertain you at a very high level. Surround yourself and your friends with world-class sound and enjoy the innovations that help ensure your command of the road and the pleasure of travelling.

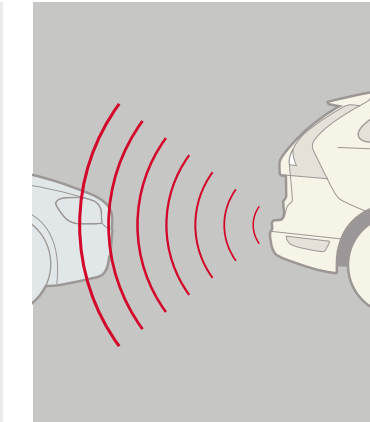


TECH & SOUND Driver's support



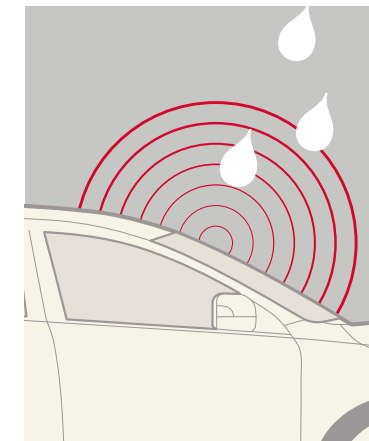
Blind Spot Information System (BLIS)

BLIS uses rear-facing cameras installed in the door mirrors to keep a lookout on either side of the car. As a vehicle enters your blind spot, this function can alert you with a lamp built in to the front door post – left or right. Together with the door mirrors, BLIS helps you assess the feasibility of a lane change. BLIS is activated once the car exceeds 10 km/h, and reacts to almost any type of vehicle from a motorcycle upwards, day or night.



Park assist, rear and front

Activated when you engage reverse gear, rear park assist helps you when reversing into tight spaces. The audio system is turned down and a pulsating sound from the rear loudspeakers becomes a continuous tone as you approach an obstacle. Front park assist performs a similar function at the front of the vehicle – alerting you via the front loudspeakers. The remaining distance is also shown on the audio display.



Rain sensor

Once activated, the rain sensor can start the windscreen wipers as soon as it begins to rain or if water splashes onto the windscreen. For your convenience, it can also automatically adapt the intermittent windscreen-wiper function. Its sensitivity can be adjusted via a ring on the wiper stalk.



Park Assist Camera

If the car is equipped with RTI navigation and park assist camera, this helps display what's going on behind your car when reversing. The system uses the RTI screen and a camera discretely located over the license plate. On-screen guiding lines provide extra assistance for smooth parking.

► = Accessory (can be fitted after you've purchased your car).

TECH & SOUND Driver's support



Automatically dimmed inner rear-view mirror

This is a mirror that automatically adjusts itself to deflect the headlamp beams of the car behind you. When there's no light to dazzle you, it automatically readjusts to its normal setting. This can be supplemented with an integrated compass.

Power Parking Brake

The Power Parking Brake (PPB) makes moving off from steep gradients easier. Once depressed, the PPB control lever automatically releases as the car pulls away.

TECH & SOUND Communication



Integrated Bluetooth® handsfree system

► Bluetooth® handsfree system

Bluetooth® technology enables a mobile phone to be connected to the infotainment system in your Volvo, wirelessly. Once configured for a mobile phone, the system automatically recognises your phone as you enter the car. And as you climb in and out of the car, the system automatically allows you to switch freely from the phone to the handsfree system and back again. With Volvo's integrated Bluetooth® handsfree system you conveniently operate your phone using the buttons in the steering wheel or the centre console keypad. To further enhance your comfort and safety, you can also add Volvo On Call roadside assistance and emergency service. Available as an accessory, there's also a voice-controlled Bluetooth® handsfree system that will listen to your command and make calls for you.

The Bluetooth word mark and logos are owned by the Bluetooth SIG, Inc. and any use of such marks by Volvo Car Corporation is under license. Other trademarks and trade names are those of their respective owners.

TECH & SOUND Communication



► Volvo's Portable Navigation System

This portable and powerful Garmin nüvi® 765 navigation unit integrates smoothly with the design of your Volvo. Just fit it into the docking unit integrated in the dashboard. The wide bright touch screen is conveniently positioned in your field of vision. The system also features an MP3 player, currency converter, calculator and FM transmitter. The navigation unit is easy to carry with you and can also be used outside the car. Maps covering major parts of Europe are stored in memory.

nüvi is a trademark of Garmin Ltd.



Road and Traffic Information (RTI)

Volvo's GPS-based RTI navigation system is totally integrated with your car. It offers both voice guidance and graphic navigation all the way to your destination. Via TMC (Traffic Message Channel) radio data broadcasts RTI also lets you know if there's weather-related trouble on route and recommends an alternative. The RTI system is easily controlled from the steering wheel or a remote, and the screen is positioned so you can keep your attention on traffic.

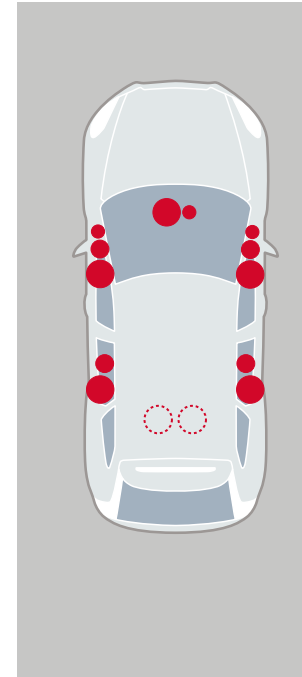
The maps are on one DVD and cover major parts of Europe. To help you keep track of new roads and points of interest, you can join our MapCare programme for two free map updates.



Integrated phone

For minimum distraction, the integrated GSM phone allows you to make calls from your pre-programmed telephone book using the steering wheel integrated controls and the car's generous information display. You can also make calls using the keypad in the centre console. When the car is stationary, you can read and send SMS text messages. Communication and convenience are further enhanced by an integrated microphone and the audio system, while the SIM-card reader is easily reached inside the glove compartment. For more private conversations, there's an extra handset.

TECH & SOUND Audio/Entertainment



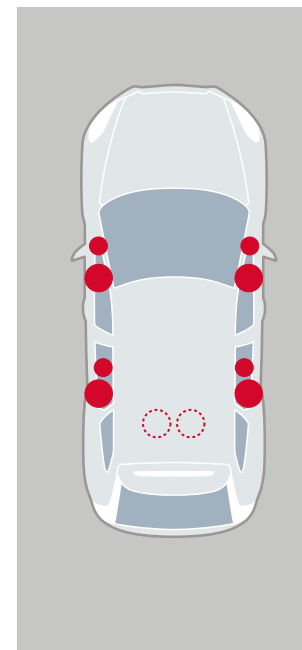
Premium Sound audio system

This is our top-of-the-line audio system designed for dynamic clarity with the entire sound spectrum. This 5x130 W system features twelve high-end loudspeakers. In addition, Dolby® Pro Logic® II surround sound helps tailor a well-balanced audio experience for each occupant. Premium Sound includes:

- RDS radio
- MP3 and WMA compatible CD player
- AUX input and USB port in front centre armrest
- 5x130 W digital class D amplifier
- Dolby® Pro Logic® II surround sound with centre loudspeaker and digital sound processor
- 12 high-end Premium Sound loudspeakers

Options: steering wheel integrated controls, an integrated 6-CD changer, a rear seat audio console, Digital Audio Broadcasting (DAB) and 260-Watt subwoofer.

Dolby, Pro Logic, and the double-D symbol are registered trademarks of Dolby Laboratories.



High Performance audio system

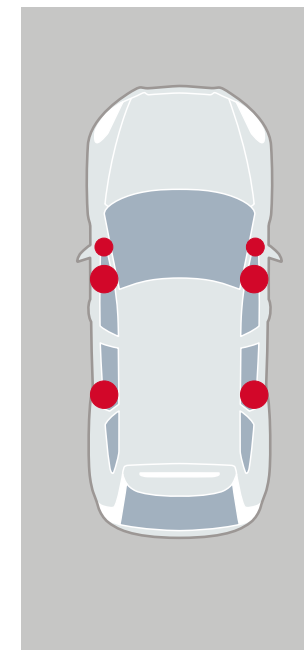
This is a powerfully versatile system. Each loudspeaker is fitted with a more powerful magnet and a larger coil. In combination with the amplifier, this system promotes excellent transient reproduction and high power – quite simply superb sound. This High Performance system includes:

- RDS radio
- MP3 and WMA compatible CD player
- AUX input and USB port in front centre armrest
- 4x40 W amplifier
- 8 High Performance loudspeakers

Options: steering wheel integrated controls, integrated 6-CD changer, rear seat audio console, Digital Audio Broadcasting (DAB) and 260 W subwoofer.

Premium Sound loudspeakers

The twelve high-end loudspeakers in the Premium Sound system are powered by a 5x130 W digital amplifier. There are three separate drivers – woofer, midrange and tweeter – in each front door. In the rear doors there is a similar set-up with a woofer and tweeter and there's an available 260-watt subwoofer you can feel. Each speaker has its own crossover filter to harmonise with the others. The latest generation Dolby® Pro Logic® II surround sound uses the centre loudspeakers (woofer and tweeter) and a sound processor to recreate authentic sound with a strong sense of presence for everyone in the car. The digital class D amplifier features new technology to provide extremely high efficiency, enabling it to generate the most audio power from the least amount of current.



Performance audio system

A console-integrated radio and CD player. It sounds good, looks good and it's easy to use. Performance equipment includes:

- RDS radio
- CD player
- AUX input in front centre armrest
- 4x20 W amplifier
- 6 loudspeakers

Option: steering wheel integrated controls. USB and iPod® Music Interface is available as an accessory.



Rear Seat Entertainment (RSE) with dual DVD players

For more fun on long journeys, this easy-to-use system will entertain for hours. There are dual DVD players and dual 7-inch screens smartly integrated in the front head restraints. Each DVD player is conveniently operated by a rear seat passenger. The passengers can see the same movie or play the same game on both screens, or choose to view a film on one screen and play games on the other. Sound is provided via the car's audio system or wireless headphones.



Rear seat audio console

Sharing the experience doesn't necessarily mean everybody wants to listen to the same music. Incorporating sockets for personal headphones, the rear seat audio console allows passengers to adjust their own volume and choose between musical sources, songs or playlists.



MP3 compatibility

There are a number of ways to enjoy MP3 music files in your Volvo. If you'd like to connect your personal MP3 player to the audio system, there's a standard auxiliary audio input in the front centre armrest. Volume is conveniently controlled from the steering wheel, centre console or rear seat audio console. Choosing the High Performance or Premium Sound audio system, there's also a USB port that allows you to fully integrate your iPod®, MP3 player or USB device with the audio system. Playlists, songs and artists are clearly displayed in the centre console, while your player will be charged at the same time. These audio systems also feature an MP3 and WMA compatible CD player. For the Performance audio system, you can add a separate USB and iPod® Music Interface (accessory) to connect your MP3 player.

iPod is a trademark of Apple Computer Inc.

260 W subwoofer

Take full advantage of the natural acoustics in this spacious Volvo with the additional subwoofer. Two 6.5" bass speakers in a ported enclosure provide distinctive bass reproduction at all volumes. The subwoofer system is mounted under the load compartment floor. It's out of sight, but you'll know it's there (260 watts of extra bass is hard to miss).

Digital Audio Broadcasting (DAB)

Available for High Performance and Premium Sound, a digital radio allows you to share the benefits of Digital Audio Broadcasting (DAB) – the standard for digital radio in Europe. In countries with DAB broadcasts, you'll have access to more radio channels, improved radio reception and near CD-quality sound.

PACK & LOAD

A world champion in versatility, Volvo has a proud heritage in providing smart solutions for both cargo and passengers – without compromising safety or comfort. So whatever you need to expand your world and the capabilities of your Volvo, here you'll find some practical equipment to make it happen.

PACK & LOAD Compartment



Three-split 40/20/40 rear seat

Ergonomically designed three-split rear seat provide generous support for the body during long journeys and flexibility when required. Lowering the entire centre section provides ample space for loading long items. To provide multiple load configurations with a flat load floor, each of the three seats can be folded separately or together. What's more, the rear seats only take one step to manoeuvre.



Foldable front seat backrest

To help you carry long objects inside your Volvo, the front passenger seat backrest can be conveniently folded flat.



► Load organiser, cargo compartment

This easily installed telescopic frame with floor rails and load holder makes it simple to secure and organise bags, gear and loose items. Fragile objects can be separated from other cargo, and the cargo area can be divided in two if required. And if the organiser isn't needed, it's easy to remove and store.

Power tailgate

The tailgate can be opened automatically three ways: with the remote control, using the switch on the dashboard, or by pulling the handle. To help minimise risk of injury, only a switch in the tailgate can be used to trigger automatic closing. Also, an anti-pinch strip around the tailgate opening can detect obstructions to help avoid pinching fingers and things.



Grocery bag holder

This integrated holder unfolds from the load compartment floor and keeps your shopping bags and other similar items in place.

► Load compartment mat, reversible and foldable

Allows you to maintain the elegant appearance of the load compartment even if you occasionally transport dirty loads. With folded rear seat backrests, just fold out the mat to cover the entire load compartment floor. The mat is reversible and waterproof, with colour-keyed textile on one side and plastic on the other.



► Protective grille and load compartment divider

This steel protective grille helps protect the occupants from unsecured cargo during hard braking. When it's not needed, just raise it parallel to the roof panel. Complement with a load compartment divider, and you conveniently separates dirty or fragile cargo from other cargo.

PACK & LOAD Carrying/Towing



Roof load carrying system

To help you fully utilise the roof of your Volvo, we've developed a range of versatile load carrying accessories. This system is dimensioned to carry up to 100 kg. The roof rails make the load carriers easy to fit. Various load accessories – such as roof boxes and different holders for bikes, skis, surfboards and kayaks – can be attached to the load carriers to meet your needs. These accessories can be freely combined for flexibility and many are aerodynamically designed to help reduce fuel consumption and wind noise. And most of them can be locked with the same key, using Volvo's One-Key System.



Towing equipment

A Volvo tow bar – fixed or removable – is the ultimate load accessory. The removable tow bar is easy to detach and refit when necessary. When not in use, it's completely out of the way. A range of tow bar mounted bicycle holders is available – you can take up to four bikes (or two e-bikes) conveniently and safely on the back of your Volvo. Loading is easy, and the holder can be tilted to allow access to the load compartment.

Automatic levelling

When you tow or carry a heavy load, automatic levelling adjusts the rear shock absorbers so the vehicle will maintain road holding, ground clearance and headlight angle.

Trailer Stability Assist (TSA)

When towing a trailer or caravan, the Trailer Stability Assist can counteract so called snaking to help maintain stability. TSA continuously monitors oscillation tendencies and can help prevent these by braking one or more wheels to compensate. If this is not sufficient, or the driver ignores it, the braking will be on all four wheels and the engine torque will be reduced. TSA is active at speeds from 50 km/h.

PERFORMANCE

In a Volvo, powertrain and chassis interact to strike the perfect balance between excitement and stability. And to further enhance the experience, additional technologies are available.

PERFORMANCE Chassis/Steering



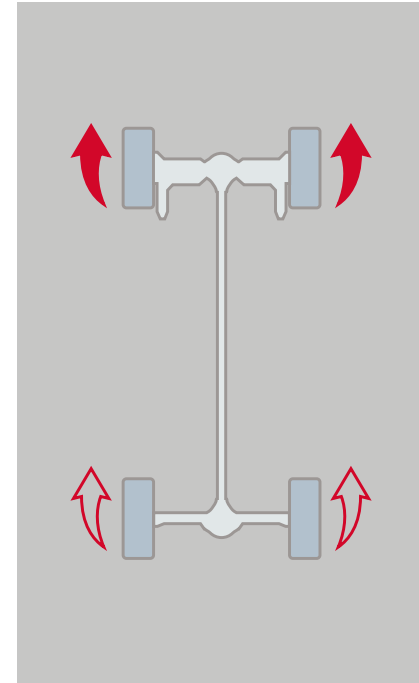
Continuously Controlled Chassis Concept (Four-C)

The Four-C active chassis provides a choice of three distinctive driving modes – Comfort, Sport or Advanced. Whichever you choose, this technology monitors the car, road and driver 500 times per second, simultaneously adjusting each shock absorber to maintain optimal handling. At the heart of Four-C is Volvo's semi-active suspension with continuously controlled Monroe-Öhlins shock absorbers. Furthermore, Four-C interacts with the DSTC system, engine, brakes and steering to promote your chosen handling style.

Comfort This chassis mode isolates the car's occupants from irregularities in the road surface. This setting prioritises flexible dampening for smooth and gentle body movement and exceptional comfort. It's ideal for slippery or uneven roads.

Sport For a sportier experience, this setting prioritises slightly stiffer dampening and acts faster. This results in more decisive body movement, precise handling and good ride comfort. Perfect for active driving.

Advanced This is the high performance mode. This setting stiffens the dampeners for maximum road contact – directly communicating the road surface to the driver. Prioritising immediate feedback rather than comfort, the advanced setting increases the range of driving dynamics.



All-wheel drive with Instant Traction™

The advanced Haldex AWD technology with Instant Traction™ helps increase driving stability and traction on all road surfaces. It has an electronic management system that constantly monitors the speed of the wheels, the throttle, engine torque, engine speed and the brakes. As driving conditions change, wheels with the best grip get the most power. When a tyre loses traction, power is reduced to that wheel and instantly transferred to the more sure-footed wheels.

Chassis

The chassis is optimised for sporty and well-balanced handling with a high level of comfort. For you as driver, advanced multi-link rear and McPherson spring strut front suspension mounted on a rigid body with a low centre of gravity translate into a feeling of being in command and in safe control. Generous ground clearance (230 mm) and short overhangs contribute to driveability on rough roads and even off-road.



Six-speed Geartronic automatic transmission

For the best of two worlds, there's the six-speed Geartronic – a responsive automatic that's ideal for relaxed driving, tough conditions or towing. This also allows manual gear shifting so you can maintain a lower gear to bring up the revs or for the added assistance of engine braking. A special winter setting makes it easier to move off and maintain grip on slippery surfaces. In the T6 AWD, this automatic also feature a sports mode for more active driving.

Six-speed manual transmission

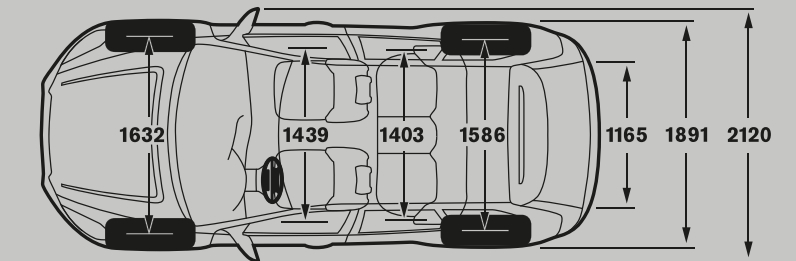
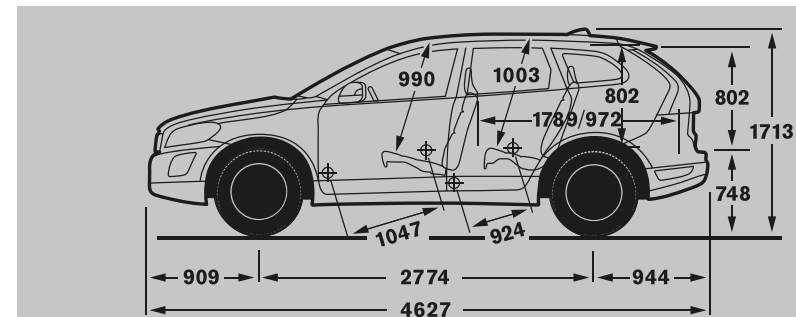
The six-speed all-synchromesh manual gearbox offers fluid and precise gear selection. The sixth gear improves comfort and fuel economy on the motorway. The smooth action of the clutch assures that you move off with confidence and grace.

Six-speed Powershift transmission

Featuring Powershift dual-clutch technology, this six-speed automatic can reduce fuel consumption by 8% compared to a conventional automatic. Gears are shifted instantaneously and torque is delivered without disruption. And if you want, you can also shift gears manually.

Hill Descent Control

Hill descent control offers a smooth and controlled hill descent on steep, rough roads. Simply push the hill descent control button and the vehicle will descend using the brake system to control each wheel's speed, so that you can concentrate fully on steering. Hill descent control also makes it easier to move off when towing a heavy trailer.



► = Accessory (can be fitted after you've purchased your car).

THERE'S MORE TO LIFE THAN A VOLVO.

Volvo. for life



THAT'S WHY YOU DRIVE ONE.

VOLVO

Volvo Car Corporation SP_XC60_00012_03-11. English.