

RENAULT SCÉNIC & GRAND SCÉNIC



DRIVE THE CHANGE



WHO BETTER THAN RENAULT TO SERVICE YOUR RENAULT?

4 **FOUR YEARS WARRANTY ROADSIDE COVER INCLUDED SERVICING FINANCE PACKAGE**

The 4+ package comes as standard with your new Renault car, van or Z.E. vehicle.*

4 - Warranty

Your vehicle is covered by a warranty package for up to 48 months. The first 2 years are unlimited mileage, followed by a further 2 years up to 100,000 miles. Your Dealer is able to repair or replace, without charge, parts that are found to have a material or assembly defect that is recognised by Renault.

4 - Roadside Cover

Any problems and we'll provide emergency roadside repairs or tow you to the nearest Renault dealer. This service is provided in partnership with the Automobile Association (AA) and is available 24 hours a day, every day of the year. We'll provide home start and roadside for 48 months, with additional recovery, onward travel and European assistance for the first three years.

4 - Servicing

Your vehicle is covered for free servicing during your first four years of ownership, or your first 48,000 miles (80,000 miles for vans), whichever comes first. That covers everything required in the manufacturer's minimum maintenance programme including parts, labour and VAT, but excluding normal wear-and-tear items, such as brake pads, windscreen wipers or tyres.

4 - Finance Package

The 4+ package is available with or without a finance package, it's your choice. Simplify your cash flow with fixed monthly payments with Renault Selections* or Hire Purchase finance packages. (* Cars only). Cash offers also available.

SERVICE INTERVALS

18,000 miles / 1 year: <ul style="list-style-type: none"> • Twingo 1.2 16V 75 • Mégane all engines except Renaultsport 265 • Scénic all engines • Fluence Z.E. • Twizy 	18,000 miles / 2 years*: <ul style="list-style-type: none"> • Clio all engines except 1.2 TCe 100 & Renaultsport 200
12,500 miles / 2 years*: <ul style="list-style-type: none"> • Mégane Renaultsport 265 • Twingo Renaultsport 133 	12,000 miles / 2 years*: <ul style="list-style-type: none"> • Clio 1.2 TCe 100 & Renaultsport 200
25,000 miles / 2 years*: <ul style="list-style-type: none"> • Traffic all engines • Master all engines 	

* Service required at the mileage or time interval shown, whichever is sooner.

ENGINES WITH OIL CONTROL SYSTEM (OCS)

- PETROL 1.2 TCe 100 & 115, Renaultsport 133 & 265
- All DIESEL engines

OCS monitors driving conditions that directly affect the quality of your engine oil, protecting your engine from excessive wear and possible bearing failure. Under certain conditions; low speeds, heavy traffic, door-to-door deliveries (engine turning with little distance travelled) or in high gear for long periods; sport driving, towing a caravan/trailer over 500kg (engine turning at higher revolutions), the vehicle's service interval may be shortened and you will be alerted, via the instrument panel service indicator, that a Renault Service is required earlier (refer to Driver's Handbook for details).

RENAULT ACCIDENT SUPPORT LINE - 0800 085 8005

The Renault Accident Support Line (RASL) is a dedicated service from Renault for all Renault drivers and their families, no matter what car they drive. This service is available at no cost to you, regardless of fault. RASL will deal with every aspect of your claim, from ensuring you are recovered to a Renault Approved Accident Repair Centre to dealing with all insurance companies giving you total convenience and peace of mind. 0800 085 8005 is the only number you need so please programme it into your phone and make sure that in the event of an accident you call us first and we will take care of everything.

RASL WILL:

- Collection of your car from the scene of an accident if unroadworthy
- Provide a like for like replacement car or courtesy car
- Repair your car using only Renault Approved Accident Repair Centres
- A 5 year repair guarantee
- Use only Renault Original Parts
- Ensure you do not have to pay a policy excess if the accident is not your fault

Or for more information on the Renault Accident Support Line Service just visit www.renault.co.uk/rasl

RENAULT INSURANCE

A car as well designed as your Renault deserves an insurance policy to match. Renault Insurance has been specifically created to provide superb protection for you and your car. In addition to a very competitive premium, Renault Insurance also includes: Renault Genuine parts fitted in Renault Accident Repair Centres, protecting your 12 year anti-corrosion warranty; repairs guaranteed for 3 years; a courtesy car for the duration of any repairs – subject to availability when you use an approved repairer; payment by instalments – subject to status.

Renault Car Insurance:

0845 603 8256

www.renaultinsurance.co.uk

Renault Van Insurance:

0845 603 8258

www.renaultvaninsurance.co.uk

Renault Z.E. Insurance:

0800 500 3108

www.renault-ze.com

Lines open 8am – 8pm weekdays, 9am – 5pm Saturdays and 10am – 3pm Sundays. Calls may be recorded. All quotes are based on individual circumstance and subject to insurers underwriting criteria. Renault Insurance is arranged and administered by Equity Direct Broking Limited, which is authorised and regulated by the Financial Services Authority. Registered Office: Library House, New Road, Brentwood, Essex, CM14 4GD. Registered in England & Wales No. 6710272

CUSTOMER RELATIONS

Renault knows the value of communicating with its customers and we have established effective ways to keep in touch with you. If after speaking to your local Renault dealership you are not completely satisfied, please contact the Renault UK Customer Relations Department on **08000 72 33 72** (Mon-Fri 9.00am to 5.30pm, except Weds 10.00am to 5.30pm. Closed on Bank Holidays).

You can also visit our website www.renault.co.uk

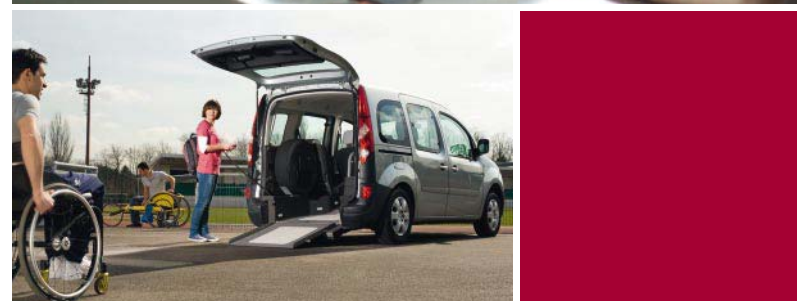
Or write to us at: **Renault UK Ltd, The Rivers Office Park, Denham Way, Maple Cross, Rickmansworth, Hertfordshire, WD3 9YS.**

Find out more about your vehicle at www.e-guide.renault.com

RENAULT NETWORK SERVICES

No-one is better placed than Renault to maintain, fit and repair your Renault, fast. The Renault Minute (maintenance and repair with no appointment necessary) and Renault Rapide Bodycare (bumper scuffs, dings and dents, windscreen, stone chips and interior repairs...) services deliver the highest level of repair and maintenance and offer a full year's guarantee on Original Renault Parts. And don't forget to have a look at our wide range of additional equipment and accessories!

*Vehicles are covered by a warranty package for up to 48 months. The first 2 years are unlimited mileage, followed by a further 2 years up to 100,000 miles. Please see the warranty terms and conditions (www.renault.co.uk/warranty) for further details. Servicing offer covers cars for 4 years or 48,000 miles, whichever comes first. Services must be carried out in line with the manufacturer's minimum maintenance programme requirements and servicing intervals, and can only be carried out at a Renault Approved outlet. Renault Assistance Roadside Cover is provided in association with the AA. Cover from month 0 to 36 includes assistance at the roadside and home, national recovery, onward travel and European cover. Cover from month 37 to 48 includes Roadside and Homestart (including a local tow to an authorised Renault dealer). The provider of this cover is the Automobile Association Limited. For Finance, guarantees and indemnities may be required. You must be at least 18 and a UK resident (excluding the Isle of Man and Channel Islands) to apply. Finance provided by RCI Financial Services Limited, PO Box 149, Watford WD17 1FJ. Available at participating dealers only. Not available in conjunction with any other schemes or finance offers, please check with your local dealer for information. Offers are available to retail and business customers (but exclude fleet customers with own terms), and are valid on new vehicles, at point of new vehicle registration, when ordered from 1st February 2012 until further notice. Visit www.renault.co.uk/4plus



WHY RENAULT? WE'RE DRIVEN BY A PASSION TO MEET AND EXCEED PEOPLE'S NEEDS, AND THAT'S WHAT DRIVES THE INDUSTRY FORWARD. IT'S BEEN THAT WAY WITH US FOR OVER A HUNDRED YEARS. BUT IN TODAY'S RAPIDLY-CHANGING ENVIRONMENT, IT'S MORE IMPORTANT THAN EVER THAT WE SOURCE NEW SOLUTIONS THAT WILL SAFEGUARD ALL OUR FUTURES.

We know that the car is at a turning point, it has to evolve whether you believe in global warming or not; to emit less in cities, to make less noise and to use increasingly scarce energy more efficiently. At Renault we are working to create more affordable cars, with radically lower CO₂ emissions. For the widest possible audience. Today that's our collection of 'eco²' models. Eco² indicates that the vehicle produces CO₂ emissions lower than 120 g/km, it includes at least 7% recycled plastic in its plastic mass, and has been designed in such a way that 95% of the materials used could have a second life (recyclable for other use or as a source of energy). In addition, eco² means that our factories are ISO 14001 certified. Starting this year there will be a groundbreaking range of electric vehicles, from a nippy town car to a comfortable family saloon and a small van. They will be affordable to run – you will be able to drive up to 100 miles using a battery that costs typically £3 to charge, and a lot less using cheaper tariffs. And parking and congestion charges should all be lower too. We believe it's time to make the car a driver of progress once more. We are determined to drive that change. Soon you will be able to join us.

RENAULT. DRIVE THE CHANGE.



SCÉNIC AND GRAND SCÉNIC 2012
BECAUSE BOYS WILL BE BOYS –
EVEN WHEN THEY'RE DADS.





INTUITIVE STYLE

LIKE FRIENDSHIP, IT GROWS ON YOU.

You don't know it yet, but you already have a lot in common with the latest Scénic and Grand Scénic range. You understand style? They have it, right down to the last detail. All-new front ends, accentuated with chrome and gloss black to highlight their dynamic looks, are enhanced by longitudinal roof bars. Even the front bumper creates more eye-catching optical effects than before, while new LED lights add a finishing touch that whispers exclusive, ultra-modern and highly attractive. In profile, there's yet more elegance, set off by chromed side strips and a new range of meticulously crafted alloy wheels. All that's left for you to choose is the colour that suits your personality best – like Azzurro Blue or Damask Red – to make their character come alive. With Scénic and Grand Scénic, great design always comes along for the ride.



INTELLIGENT TECHNOLOGY

HOW COULD WE LIVE WITHOUT IT?



With the latest Scenic and Grand Scenic, technology has advanced by leaps and bounds to make travel synonymous with yet more pleasure and calm. Everything's there to make driving easier and less stressful. All the information you need is grouped together on a multifunction colour TFT screen and is instantly available.

What's more, the Scenic and Grand Scenic now has the Visio System. With its high-res camera, it detects lane markings and warns you (visually and audibly) when your vehicle crosses (without using indicators) the white lines in the road, helping to prevent accidents due to lapses in concentration. At night, too, Visio System is on your side. It controls headlight settings and automatically adjusts between high and low beam, so when it detects an oncoming vehicle, or you're entering a town, lights are automatically dipped – so one less thing to worry about.

Along with all this, the Scenic range also has hill-start assistance as standard, which saves you having to use the handbrake. With all this innovative technology aboard, there's one very simple objective: to make driving these vehicles as pleasurable as possible.





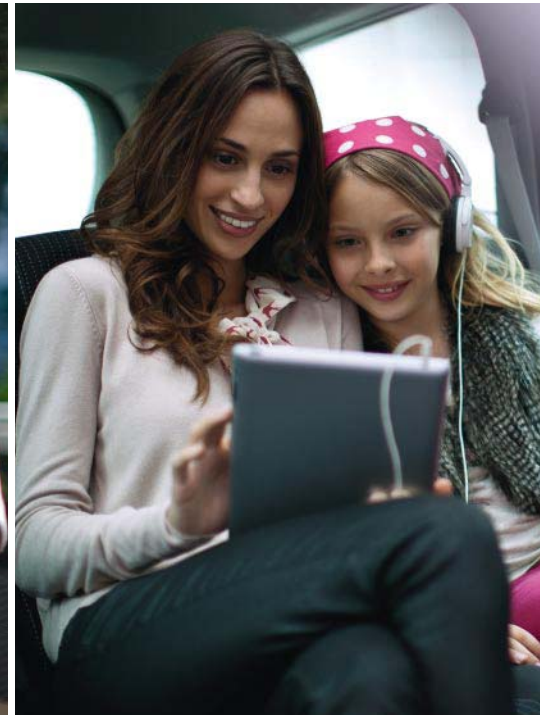
ULTRAMODERN LIVING

SEARCHING FOR INNOVATION, SEEKING NEW SENSATIONS.

When every journey involves all your senses, innovation plays a vital part in making it more enjoyable. The Scénic and Grand Scénic deliver, with a wealth of new sensations. First off, there's Carminat TomTom® LIVE – satellite navigation that includes speed camera alerts, speed limits and points of interest, all as standard. You want to go further? Opt for a LIVE Services subscription, and get real-time, high-definition traffic information, mobile camera alerts, local Google searches and weather forecasts on top.

Next, there's the incredible Bose® sound system, custom-designed for the Scénic. It delivers a unique acoustic experience, close to a live performance, to every seat in the house, with deep, resonant bass, crystal clear tones and sparkling trebles. Thanks to ever more compact, lighter components, the Bose® Energy Efficient Series uses less power to create its top-end sounds, no matter what volume you're listening at.

Finally there's the reversing camera to help with manoeuvring. As the perfect complement to front and rear sensors, it turns parking into child's play. All this means travel by Scénic or Grand Scénic has never before been so technologically together or more totally entertaining.



SPACE TRAVEL

WELCOMING ROOM ARRANGEMENTS, WITH PRACTICALITY BUILT IN.

Living well and sharing good things together always means you'll need enough space to do it. That's why the Scénic and Grand Scénic range share one key phrase: freedom of movement. Always top of their now well-established class, they offer outstanding leg and headroom in each row of seats. The flexible seating system makes them hugely practical, as does the clever upholstery coating, using Dupont™ Teflon® anti-stain and anti-dirt treatment.

So, whether you're using one, two, five, or (with Grand Scénic) seven seats, you'll find the interior is carefully thought out with personal space and comfort as priorities – no matter what your height or age. Because to drive in the Scénic or Grand Scénic will always be to travel in XXL style.





FEEL-GOOD FACTOR GUARANTEED

THE SCIENCE OF UNLOCKING SPACE, THEN ORGANISING IT.

We all need a sense of well-being in everyday life, whether it's with the family or while working. With their infinitely versatile character, the Scenic and Grand Scenic are perfectly placed to meet that need. From first sight, you feel as if you're being royally welcomed on a relaxing trip. Comfortable, multi-adjustable seats and seat backs offer a calming space for enjoying the good life, and a clear view of the sky through the opening panoramic sunroof. It's an open invitation to real comfort in safety, too, with adjustable headrests on the first two rows of seats. And there's loads of room for all your kit, with a record amount of storage space (up to 92 litres), and 40 practical and accessible solutions for everyone on board. That's what makes every journey bring with it the promise of living life to the full, all together, in surroundings that you'll always find really family friendly.

DYNAMISM IN ITS PUREST FORM

THE ENGINES AT THE HEART OF YOUR ADVENTURES.

EDC
EFFICIENT DUAL CLUTCH

RENAULT
ENERGY



WITH ENERGY, A NEW AGE OF MOTORING ARRIVES.

Energy is a new range of ecological and economical engines, built on Renault's F1 know-how. They use a whole team of technologies – like Stop & Start and regenerative braking – that's unprecedented at this level. Their forward-looking achievement is to combine lowest possible CO₂ emissions with reduced fuel consumption. Best of all, it's not at the expense of pure enjoyment either: torque's improved, and acceleration is livelier than ever. With best-of-both-worlds performance like that, Energy powerplants make going greener a real pleasure, as you'll discover.

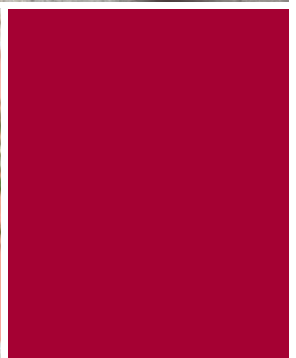
SCÉNIC AND GRAND SCÉNIC ENERGY dCi 110: THE MOST FRUGAL IN THEIR FAMILY.

When you want to balance the great pleasures of driving with the responsibility of handing down a sustainable environment for your youngest passengers to grow up in, the Scénic engines can honestly help. By contributing a significant drop in both CO₂ emissions and fuel consumption. The Energy* TGe 115 petrol engine, and the dCi 110 and 130 show just how much – with fuel consumption from 68.9 mpg, and CO₂ emissions from 105 g/km – but at the same time, retaining generous torque levels for strong acceleration and pulling power.

When it comes to roadholding, Scénic and Grand Scénic stay true to their DNA of legendary stability, with impeccable balance and directional control, surefooted comfort and precision through corners and in the wet. On the transmission front, the dual-clutch EDC box is coupled to a dCi 110 engine which exhibits a particularly winning combination of responsiveness and fuel economy.

All in all, to drive Scénic or Grand Scénic is to be responsible, as well as fun-loving. Which is why, from any point of view, the latest range has to be the natural family favourite.

* These engines are identifiable by the suffix 'Stop & Start' in the Price Guide.



COMFORT



1. ADAPTABLE HEADRESTS

With height, tilt and even side adjustment, they provide a first class level of comfort.



2. DUAL-ZONE CLIMATE CONTROL

Provides a truly personalised level of temperature control, so each front passenger can select the temperature that suits them best. The three modes (Auto, Fast or Soft) adapt to the specific needs of each individual and provide a balanced level of warm or cool air. And, thanks to the Air Quality Sensor, air recirculation is automatically activated as soon as the vehicle enters a dusty or polluted environment.



3. DUPONT™ TEFLON® COATING*

Long-term cleanliness and peace of mind are the two benefits offered by this exclusive new upholstery. Its anti-stain and anti-dirt coating, developed together with DuPont™, allows for easy cleaning so the upholstery looks new for much longer.

4. HANDS-FREE KEYCARD

All you need do is carry the card with you. You can open the doors and start the ignition without having to insert the card into the reader. Move away from your vehicle and the doors lock automatically.

*Teflon® is a registered trademark of DuPont™ used under license by Renault.

**Subject to the compatibility of your mobile phone. Please park safely before using mobiles.



4

1. BI-XENON DIRECTIONAL HEADLIGHTS

They follow every turn or bend in the road, giving you the best possible anticipation and control thanks to their intense brightness.

2. TYRE PRESSURE MONITOR

The system immediately alerts you in case of a puncture or drop in pressure, to prevent any risk of loss of control.

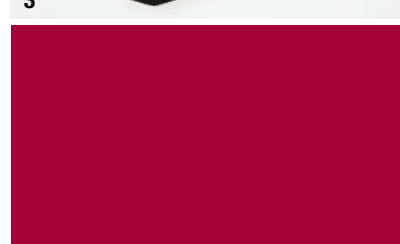
3. VISIO SYSTEM

Thanks to its high resolution camera, this system detects road markings and visually or audibly warns you when you cross over a continuous or broken line while the indicators are switched off.

The "automatic headlights" function adjusts their brightness to fit the prevailing conditions.

4. PASSENGER PROTECTION

The programmed safety system includes a full range of airbags and side impact sensors. The Fix4sure technology, a Renault innovation, is designed to prevent submarining (where, in a frontal impact, a passenger could slip underneath the seatbelt) and effectively protects everyone on board.



4

SAFETY

ACCESSORIES



1. KIDFIX CHILD SEAT

Designed for children aged 4 to 10, this forward facing seat works with or without ISOFIX fittings.

2. NEXTBASE VIDEO CLICK & GO

With this high-end seat back video system you can watch two different movies on two extra-large screens, so the inside of your Scenic is transformed into a genuine mini home cinema. Includes two infrared headphones, mains charger, carry case and 12V plug-in power cable.



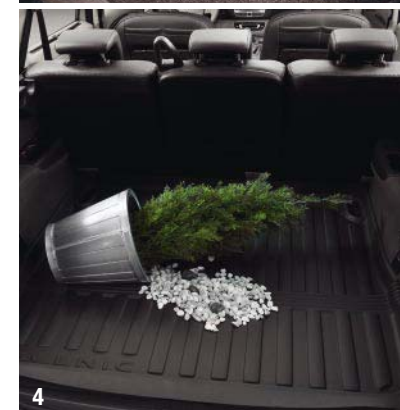
3. INTERIOR MATS

Custom-designed and 100% compatible with the vehicle, they seamlessly integrate with the interior. Rubber or fabric, choose the Renault mat that suits you best. Mats are also available to match brown colourways.



4. BOOT LINER

Perfect protection, matched to the size of your Scenic, the boot liner is slip-resistant and washable.



4

5. REVERSIBLE BOOT MAT

This versatile mat helps protect your boot from dirt and everyday wear and tear.

6. ALUMINIUM ROOF BARS

Strong and perfectly suited to the Scenic's design, the aluminium Touring Line roof bars are easy to fit and can be added to with various accessories.

7. TOWBAR

Keeps the look of your Scenic, and is ready to go where you want to tow, because it can be fitted or removed without tools in just a few seconds.

8. TOWBAR BIKE RACK AND ROOF BOX

Perfect for your leisure lifestyle, this Touring Line roof box is mounted on the aluminium roof bars, while the tow bar bike rack, with its tilting function, still gives easy access to the boot.



7



8




FIX4SURE



TRIMS



DYNAMIQUE TOMTOM
Sportiness plus practicality.
The Dark Carbon 'Estrella' upholstery features a modern mix of synthetic leather and fabric. The TEFLON® treatment to the seats allows spills to be cleaned up easily.



LEATHER PACK - OPTIONAL
A luxurious mix of Dark Carbon leather and Alcantara.

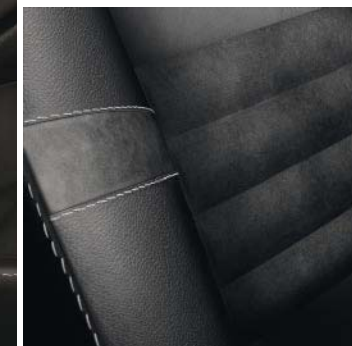
TRIMS



**LUXE PACK - OPTIONAL
'Natère' Dark Carbon**
A beautiful and luxurious
combination of synthetic
leather and fabric in a Dark
Carbon colour.



**LEATHER PACK - LUXE
DARK CARBON**
A stunning combination
of leather and Alcantara
in Dark Carbon.



**LUXE PACK - OPTIONAL
'Natère' Alpaca Beige**
A beautiful and luxurious
combination of synthetic
leather and fabric in a distinctive
Alpaca Beige colour. This is
complemented with a Dark
Brown dash and detailing.



**LEATHER PACK - LUXE
ALPACA BEIGE**
A stunning combination of
leather and Alcantara in a
distinctive Alpaca Beige colour.
This is complemented with a
Dark Brown dash and detailing.



EQUIPMENT

<p>SAFETY AND SECURITY</p> <ul style="list-style-type: none"> • ABS with EBD (Electronic Brake Distribution) and Brake Assist • Airbags x 8 - driver and front passenger two stage auto-adaptive, front and rear curtain and front side impact • Airbag - front passenger deactivation facility • ASR (traction control) • Automatic parking brake • Cruise control • CSV (understeer control) • Deadlocking • ESC (Electronic Stability Control) • Headrests - height adjustable front and rear 	<ul style="list-style-type: none"> • Hill Start Assist • Insurance approved alarm (Thatcham category 1) • Insurance approved engine immobiliser (Thatcham category 2) • ISOFIX child seat fixing points - on three second row seats • R.A.I.D. (Renault Anti Intruder Device) automatic door locking • Speed limiter <p>COMFORT AND DRIVING</p> <ul style="list-style-type: none"> • Aviation tables on rear of front seats • Central locking - remote control • Door mirrors - body coloured, electrically adjustable and heated • Headlamps - double optic with 'See me Home' function 	<ul style="list-style-type: none"> • Indicators with lane change function • Pockets on rear of front seats • Renault keyless entry with push button start • Seats - driver with height and lumbar adjustment, passenger with height adjustment and folding facility • Steering wheel - leather with height and reach adjustment • TFT screen dashboard display with Ecodrive information and a choice of display colours • Trip Computer • Tyre inflation kit • Windows - electric front and rear 	<p>CORE FEATURES</p>
<p>Dynamique TomTom additional equipment to core features</p> <ul style="list-style-type: none"> • 4 x 20W radio CD with fingertip remote control • Air conditioning - manual • Alloy wheels - 16" 'Kaleido' • Automatic headlights • Automatic rain sensitive windscreen wipers • AUX and USB connection on radio fascia 	<ul style="list-style-type: none"> • Bluetooth connectivity • Body coloured side protection mouldings • Carminat TomTom® Live satellite navigation system with remote control • Child minder mirror* • Dashboard trims in high gloss piano black • Footwell lights - front and rear • LED daytime running lights 	<ul style="list-style-type: none"> • Parking sensors - rear • Reading spotlights - front and rear • Sunblinds - on 2nd row rear windows • Upholstery - Dark Carbon "ESTRELLA" synthetic leather and fabric with TEFLON protection • Windows - extra tinted rear and tailgate 	

<p>LUXE PACK (OPTIONAL) not available with 1.6 VVT 110 engine</p> <ul style="list-style-type: none"> • Alloy wheels - 17" 'Sari' • Automatic Dual-Zone climate control • BOSE Energy Efficient Sound System: 9 speakers: single CD and digital amplifier • Door mirrors - electrically adjustable, heated and folding 	<ul style="list-style-type: none"> • Driver's sunglasses holder • Sliding centre console / storage unit • Sunvisors with illuminated vanity mirrors • Upholstery - luxury mix of synthetic leather and fabric with detail stitching - choice of Dark Carbon or Alpaca Beige 	<ul style="list-style-type: none"> • Visio System by Renault - lane departure warning and automatic high/low beam 	<p>LUXE PACK</p>
--	---	--	-------------------------

* This equipment is not fitted if the electric panoramic sunroof option is chosen

For full details of the extensive range of options available for your Scénic or Grand Scénic, please see the back pages of this brochure.

COLOURS



	Glacier White NM 369	Pacific Blue NM 460	Arctic White I.D. QNC	Azzurro Blue MP RPB	Damask Red MP NNM	Diamond Black MP GNE	Mercury MP D69	Mocha MP CNB	Oyster Grey MP KNG	Ruby Red MP NNJ	Stone MP HNK
Dynamique TomTom	•	•	○	○	○	○	○	○	○	○	○
Luxe Pack	•	•	○	○	○	○	○	○	○	○	○

• : Standard ○ : Optional NM = Non-metallic paint MP = Metallic Paint I.D = I.D Metallic Paint
It should be noted that printing limitations do not permit these subtle paintwork shades to be shown with absolute accuracy. Only personal inspection of the Scénic at your Renault dealer will reveal it in its true colours. From time to time changes are made to the colour range. Please check availability with your Renault dealer.

WHEELS



1. 16" 'KALEIDO' ALLOY WHEELS



2



3



4

2. 17" 'PLENUM' ALLOY WHEELS

3. 17" 'SARI' ALLOY WHEELS

4. 18" 'KANJARA' ALLOY WHEELS

EQUIPMENT AND OPTIONS

	Dynamique TomTom
SAFETY	
Active and Passive Safety Features	
5 adaptable headrests for front and second row seats	○* / P2
ABS with EBD (Electronic Brake Distribution) and Brake Assist	●
ASR traction control	●
CSV understeer control	●
Deactivation of front passenger airbag	●
Driver and front passenger two stage auto-adaptive airbags	●
Electric child safety locks on rear doors activated via a switch on the driver's door panel	●
ESC (Electronic Stability Control)	●
Front and rear curtain airbags	●
Front and rear headrests with height adjustment	●
Front lateral airbags	●
Height adjustable front seatbelts	●
Hill Start Assist	●
ISOFIX child seat mounting points on 3 second row seats	●
R.A.I.D. (Renault Anti Intruder Device) with automatic door locking	●
Three point seatbelts fitted to all front and rear seats	●
See and Be Seen Visibility Features	
Automatic headlights	●
Automatic rain sensitive windscreen wipers	●
Bi-Xenon directional headlights with headlamp washers	○
Double optic headlights	●
Electrically adjustable and heated door mirrors (wide angle on driver's side)	●
Electrically adjustable, heated & folding door mirrors (wide angle on driver's side)	○ / P1
Front fog lights	●
Heated rear windscreen	●
LED daytime running lights	●
See Me Home headlights	●
Vehicle Security	
Deadlocking	●
Insurance approved alarm system (Thatcham category 1)	●
Insurance approved engine immobiliser (Thatcham category 2)	●
Remote control central locking	●
Renault hands free keycard	●
EXTERIOR FEATURES	
Exterior Styling	
16" 'Kaleido' alloy wheels	●
17" 'Plenum' alloy wheels	○
17" 'Sari' alloy wheels	P1
18" 'Kanjara' alloy wheels with tyre pressure monitors – dCi 130 Stop & Start engine only	○
Body coloured door mirrors	●
Body coloured exterior door handles	●
Body coloured side protection mouldings	●
Body coloured side protection mouldings with chrome strip	P1 / **
Metallic paint	○
Renault i.d. metallic paint	○
COMFORT AND CONVENIENCE	
Driving Technology	
Cruise control	●
Electronic automatic parking brake	●
Emergency spare wheel	○
Front parking sensors	P2
Height and reach adjustable steering wheel	●
Indicators with lane change function	●
Leather gearknob	●
Leather steering wheel	●
Rear parking camera incorporating front parking sensors	○*
Rear parking sensors	○
Speed limiter	●
Trip computer	●
Tyre inflation kit	●
Visio System by Renault – lane departure warning and automatic high / low beam	○ / P1
Dashboard	
Digital fuel gauge with low fuel level warning light	●
Digital rev counter	●

	Dynamique TomTom
Digital speedometer in the centre of the dashboard	●
Driver and front passenger 'seatbelt not fastened' audible alert	●
Exterior temperature indicator	●
Rear 'seatbelt unfastened' audible alert	●
TFT screen dashboard display with Ecodrive information and a choice of display colours and layout	●
Windows and Blinds	
Electric front windows – with 'one-touch' facility and anti-pinch	●
Electric panoramic sunroof with sunblind	○
Electric rear windows with anti-pinch	●
Extra tinted rear windows and tailgate	●
Sunblinds on second row rear windows	●
Ventilation	
Air conditioning	●
Automatic Dual Zone climate control (left and right front controls) with toxicity sensor and rear lateral air vents	○ / P1
Pollen filter	●
Seating, Carpet Mats and Interior Styling	
2 nd row – 3 individual seats which slide forwards / backwards, fold in half, tilt forward and can be removed completely	●
3 rd row – 2 seats which fold flat into the floor (Grand versions only)	●
Alpaca Beige leather and Alcantara upholstery	P4
Alpaca Beige 'Natère' luxurious synthetic leather and fabric upholstery	P1
Dark Carbon 'Estrella' synthetic leather and fabric upholstery with contrast stitching	●
Dark Carbon leather and Alcantara upholstery	P3 / P4
Dark Carbon 'Natère' luxurious synthetic leather and fabric upholstery	P1
Driver's seat with lumbar adjustment	●
Electrically adjustable driver's seat with memory function	P3 / P4
Folding passenger seat	●
Heated front seats	P3 / P4
Height adjustable driver's seat	●
Height adjustable passenger's seat	●
Upholstery with TEFLON protection ⁽¹⁾	●
Storage and Functional Features	
12 volt power point located in boot	●
12 volt power point located in row 2	●
Aviation tables on rear of front seats	●
Driver's sunglasses holder	P1
Front and rear underfloor storage	●
Sliding centre console / storage unit	○ / P1 / P2
Storage pockets on rear of front seats	●
Storage trays under front seats ⁽³⁾	●
Interior Convenience and Lighting	
Child minder mirror ⁽²⁾	●
Driver and passenger reading spotlights	●
Footwell lighting	●
Front and rear centre lighting	●
Glovebox and boot courtesy lights	●
Rear passenger reading spotlights	●
Sun visors – driver and passenger with illuminated vanity mirrors	P1
Sun visors – driver and passenger with vanity mirrors	●
In-car Entertainment and Communication	
4 x 20W radio CD MP3 player	●
AUX input in radio fascia	●
Bluetooth connectivity	●
BOSE® Energy Efficient Sound System: 9 speakers: radio, single CD and MP3 with a digital amplifier	○ / P1
Carminat TomTom Live satellite navigation system (UK map) ⁽⁴⁾	●
Carminat TomTom Western European mapping upgrade	○
Fingertip control audio system	●
USB connection in radio fascia	●
Option packs	
P1 - LUXE PACK: 17" 'Sari' alloy wheels, automatic dual-zone climate control, BOSE Energy Efficient sound system, driver's sunglasses holder, electric folding door mirrors, illuminated mirrors on sunvisors, sliding centre console, Visio System by Renault and a choice of Alpaca Beige OR Dark Carbon Natère luxurious synthetic leather / fabric upholstery	○***
P2 - CONVENIENCE PACK: Adaptable headrests for front and 2 nd row seats, front parking sensors, sliding centre console	○
P3 - LEATHER PACK: Dark Carbon leather / Alcantara upholstery, electrically adjustable driver's seat with memory function, front heated seats	○
P4 - LEATHER PACK LUXE: Alpaca Beige OR Dark Carbon leather / Alcantara upholstery, electrically adjustable driver's seat with memory function, front heated seats	○*
● Standard ○ Optional (stand-alone) - Not available P Available as part of a Pack (number denotes pack) * Must be ordered with LUXE PACK ** Standard on all Grand versions *** Not available with 1.6 WT 110 engine	

⁽¹⁾ Not with leather packs

⁽²⁾ Not fitted if the 'electric panoramic sunroof' option is chosen

⁽³⁾ Tray under driver's seat not available when BOSE stereo or electric seat is fitted

⁽⁴⁾ With remote control operation. Joystick control operation when vehicle is fitted with 'sliding centre console / storage unit'

NOTES

Lined area for notes on the left side of the page.

Lined area for notes on the right side of the page.

RENAULT SCÉNIC & GRAND SCÉNIC



(Enter Renault's world at Sky Guide 883 and www.renault.tv)

4 FOUR YEARS
WARRANTY
ROADSIDE COVER
INCLUDED
SERVICING
FINANCE PACKAGE

RENAULT
recommends **elf**

Although every effort has been made to ensure that the information contained within this brochure is as accurate and up to date as possible, Renault U.K. reserves the right to modify its models without notice, including their characteristics, specifications, equipment and accessories. Brochures inevitably become out of date or inaccurate in some respects, in that such characteristics, specifications, equipment, or accessories may be changed after the publication date given below and can differ from the descriptions given. It is therefore necessary to check with your Renault Dealer before purchasing any product that the characteristics, specifications, equipment or accessories of the vehicle on order are as advertised.

Publication date August 2012.

