

RENAULT *SPORT*



(Enter Renaultsport's World at www.renaultsport.co.uk
www.facebook.com/renaultsportuk
www.twitter.com/renault-uk)

CHARTERHOUSE. APRIL 2012. PART NUMBER 7701 380 594
Renault U.K. Limited Customer Relations, The Rivers Office Park, Denham Way, Maple Cross, Rickmansworth, Hertfordshire WD3 9YS - Tel: 08000 72 33 72.

RENAULT *SPORT*



Although every effort has been made to ensure that the information contained within this brochure is as accurate and up to date as possible, Renault U.K. reserves the right to modify its models without notice including their characteristics, specifications, equipment and accessories. Brochures inevitably become out of date or inaccurate in some respects, in that such characteristics, equipment, specifications or accessories may be changed after the publication date given below and can differ from the descriptions given. It is therefore necessary to check with your Renault dealer before purchasing any product that the characteristics, specifications, equipment or accessories of the vehicle on order are as advertised. Publication date April 2012.



DRIVE THE CHANGE



THE RENAULTSPORT HALL OF FAME

Buying a Renaultsport today is to buy more than just a car. It is to drive the latest in a long line of class-defining products, each pushing the boundaries of engineering expertise and driving dynamics in their respective eras. It is this knowledge, developed and honed over time, which keeps Renaultsport at the forefront of today's performance car market.

Here's a selection of some of our finest achievements:



ALPINE A110 (1962)

Unveiled at the Paris Motor Show, in 1962, the Alpine A110 featured several innovative features: a steel backbone chassis, fibreglass polyester body and an offset rear-mounted engine. The car's elongated rear was actually a triumph of both form and function: it was needed to house Renault's first 4-cylinder engine with five bearings. Like the R8 Gordini before it, the A110 also proved to be a successful rally car, dominating the 1973 World Rally Championship with eight wins out of 13, including two one-two-three victories at the Monte Carlo rally and the Tour de Corse. Continuous development of the car's engine and performance life were the key to maintaining its competitive edge.



RENAULT 8 GORDINI (1964)

The R8 Gordini showed how, with a little magic from Amadée Gordini, an ordinary Renault 8 could be transformed into a genuine performance car. With a tuned 90 bhp engine and close ratio 5 speed manual gearbox, the R8 Gordini could reach a top speed of 105mph. In its unmistakable blue paintwork with twin white stripes, it enjoyed considerable success in rallying, finishing first in the 1964 Tour de Corse rally.



RENAULT 5 GT TURBO (1985)

The Renault 5 GT Turbo is the original 'pocket rocket', marking the start of Renault's considerable success in making hot hatchbacks. With a 1.4 litre turbocharged engine producing 120 bhp and weighing just 830kg, its exceptional power-to-weight ratio enabled it to reach 62 mph in 7.1 seconds. After the rallying successes enjoyed by the wide-bodied, rear-engine Renault 5 Turbo cars of the early 80s, the R5 GT Turbo brought performance motoring to the masses as the hot hatch era began to enter full swing.



CLIO WILLIAMS (1992)

Named after the Renault-powered Williams F1 team of the era, the Clio Williams has become one of the most iconic hot hatchbacks of all time. All three phases of the Clio Williams featured trademark dark metallic blue paintwork with 15" gold alloy wheels and gold Williams logos, as well as a purposeful bonnet bulge and air intake. With 150 bhp from its rev-hungry 2.0 F7R engine, the Williams reached 60 mph in 7.7 seconds - impressive performance, even by today's standards. The Williams will continue to be a benchmark for hot hatches for years to come.



RENAULTSPORT SPIDER (1995)

The Renaultsport Spider is arguably Dieppe's most uncompromising production car to date. The combination of a lightweight aluminium chassis and the absence of a roof meant the Spider weighed just 930kg, making for a purist's driving experience. Coupled with the 2-litre 150 bhp engine from the Clio Williams, the Spider's power-to-weight ratio made for race-car-like handling and performance. The Spider also formed the basis for a one-car racing series, often supporting the popular British Touring Car Championships during the 1990s. Only 1,726 Sport Spiders were produced worldwide, making it a sought-after collector's car.



CLIO RENAULTSPORT V6 255 (2003)

The Clio Renaultsport V6 255 was a Clio with attitude. From its extended wheelarches housing 18-inch alloy wheels to its side air intakes, the Clio V6 oozed on-road presence. Its mid-mounted 3-litre 24-valve V6 engine producing 255bhp provided a suitably spine-tingling soundtrack to match its exotic exterior and performance to humble more expensive machinery. It is little wonder that the Clio V6 proved a hit with UK journalists, including Jeremy Clarkson, who stated, "in my perfect 10 car garage I would definitely have one of these – no question".



CLIO RENAULTSPORT 182 TROPHY (2005)

As a final farewell to the acclaimed Clio Renaultsport 182, the Trophy limited edition became the pinnacle of Renaultsport's achievements with Clio II. Designed and conceived solely for the British enthusiast market, with input from the legendary Jean Ragnotti, the Trophy offered exceptional road-holding thanks to its bespoke Sachs Racing dampers. The Trophy wooed the British motoring press, with Autocar magazine pronouncing it the "World's Greatest Hot Hatch", whilst Evo Magazine awarded it with its "Car of the Decade" award in 2005. With its signature Capsicum Red paintwork with contrasting gold 'Trophy' logos, this limited edition of just 500 units is destined to be a future classic.



MÉGANE R26.R (2008)

At 123kg lighter the Renaultsport Mégane 230 F1 Team R26 on which it was based, the Mégane R26.R set new standards for modern day hot hatches. Bringing race car features to the road, including a carbon bonnet, polycarbonate windows, Sabelt carbon-shelled race seats and six-point harnesses, the R26.R proved its mettle by breaking the lap record for the fastest front-wheel-drive production car around the Nürburgring Nordschleife circuit, at 8 minutes 17 seconds. Such performance earned the R26.R fifth place in Evo magazine's "100 Greatest Driver's Cars" ahead of all Ferrari and Lamborghini models.



MÉGANE RENAULTSPORT 265 TROPHY (2011)

Following hot in the tyre tracks of the Mégane Renaultsport R26.R, the Mégane Renaultsport 265 Trophy entered Renaultsport folklore, and shot into the record books in June 2011. It set a new benchmark lap time for the fastest front-wheel drive production car around the legendary Nürburgring Nordschleife in Germany. Beating the stripped out R26.R's lap time by 9 seconds, the 265 Trophy lapped the circuit in a scarcely believable 8 minutes 8 seconds. The key to this amazing performance was an increase of 15hp and 20Nm of torque over the Mégane Renaultsport 250, and the extra grip generated by the high-performance Bridgestone Potenza RE050A tyres. With just 50 Mégane Renaultsport 265 Trophy vehicles built for the UK, this record-breaking Mégane is sure to become a sought-after collector's item.



CONTENTS

The Renaultsport hall of fame	02
The Renaultsport range and awards	05
New Twingo Renaultsport 133	06
Clio Renaultsport range	14
Clio Renaultsport 200 Cup	16
Clio Renaultsport 200	22
Mégane Renaultsport range	28
Mégane Renaultsport 265 Cup	30
Mégane Renaultsport 265	36
Renaultsport Technology	42
Accessories	46
Trackdays and events	50
From motorsport to road cars	52
Services	53

THE RENAULTSPORT RANGE AND AWARDS

The continued awards success of our Renaultsport range emphasises our industry rating. With sporty looks, style and performance as standard, you can't deny that these cars are all worthy winners!

NEW TWINGO RENAULTSPORT

- Twingo Renaultsport 133 Cup: What Car? Car of the Year 2011 – Best Hot Hatch under £15,000 cars winner
- Twingo Renaultsport 133 Cup: What Car? Car of the Year 2010 – Best Hot Hatch under £15,000 cars winner



CLIO RENAULTSPORT

- Clio Renaultsport 200 Cup: What Car? Car of the Year 2012 – Best Hot Hatch £15,000 to £20,000 cars winner
- Clio Renaultsport 200 Cup: What Car? Car of the Year 2011 – Best Hot Hatch £15,000 to £20,000 cars winner
- Clio Renaultsport 200 Cup: What Car? Car of the Year 2010 – Best Hot Hatch £15,000 to £20,000 cars winner
- Clio Renaultsport 200 Cup: What Car? – Top 50 Fun Cars less than £17,500 winner 2011
- Clio Renaultsport 200 Cup: Autocar's Hot Hatch of the Year 2011
- Clio Renaultsport 200 Cup: Autocar's Hot Hatch of the Year 2010



MÉGANE RENAULTSPORT

- Mégane Renaultsport 250 Cup: What Car? Car of the Year 2012 – Best Hot Hatch overall winner
- Mégane Renaultsport: What Car? Car of the Year 2011 – Best Hot Hatch overall winner
- Mégane Renaultsport: What Car? Car of the Year 2010 – Best Hot Hatch overall winner
- Mégane Renaultsport 250 Cup: What Car? – Top 50 Fun Cars 2011 overall winner



But don't just take their word for it! Explore the Renaultsport range by taking a look at the rest of this brochure...



NEW TWINGO RENAULTSPORT 133

STYLE AND PERFORMANCE AS STANDARD

Serious fun. The New Renault Twingo Renaultsport 133 is an affordable entry into the world of Renaultsport. The incisive, distinctive profile with F1-style front blade, wider stance and four-into-one exhaust all speak of sporting character – as does the central rev counter gear change alert.

Behind the looks, there's a punchy 133hp 1.6 litre engine to combine sports performance with everyday driveability. A choice of five colours is available, including - for the first time - Renaultsport Liquid Yellow. Everything about it is special, but for the ultimate, you can also opt for the optional Cup chassis – perfect for track days as well as day-to-day.

“One of the most entertaining real-world cars on sale, it provides more fun-per-£ than any supercar.” (Stephen Dobie, EVO)





NEW TWINGO RENAULTSPORT 133

1.6 VVT 133

The New Twingo Renaultsport 133 comes equipped with F1-style front blade, extended wheel arches and sills as standard. It comes with specific Renaultsport chassis and steering tuning as standard, ensuring it offers optimum performance and handling. New Twingo Renaultsport 133 has an impressive list of other standard equipment, including ESC (which can be deactivated), 16-inch alloy wheels, rear spoiler, leather steering wheel and Renaultsport front seats.



Vehicle shown features some optional equipment



NEW TWINGO RENAULTSPORT 133

1.6 VVT 133

New Twingo Renaultsport 133 features Liquid Yellow special metallic paint for the first time. Combined with exciting 17" 'Renaultsport' alloy wheels, now available as a standalone option, it gives New Twingo Renaultsport 133 an even more sporty look.



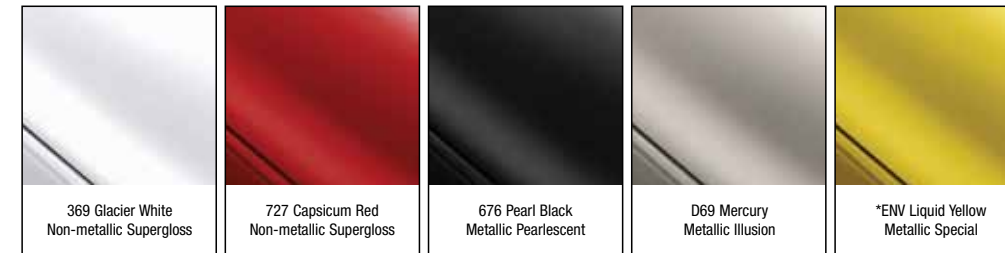
- 1. Renaultsport rear spoiler
- 2. Renaultsport front seats
- 3. Extended sills and wheel arches (optional 17" 'Renaultsport' alloy wheels in black)

WHEELS



- 4. 16" 'Emotion' alloy wheels
- 5. 17" 'Renaultsport' alloy wheels in Anthracite (optional)
- 5. 17" 'Renaultsport' alloy wheels in black (optional)

COLOURS



It should be noted that printing limitations do not permit these subtle paintwork shades to be shown with absolute accuracy. Only personal inspection of the Twingo at your Renault Dealer will reveal it in its true colours. From time to time changes are made to the colour range. Please check availability with your Renault Dealer.
*Available later in model year

DIMENSIONS



A	2,368	F	1,439	K	120	N1	1,338	Y2	1137
B	3,699	G	1,688 / 1,949	L	1,581	P	897 / 868	Z	648
C	762	H	1,460	M	1,400	Q	868	Z1	1,020
D	569	H1	1,970	M1	1,348	Y	1,187	Z2	560
E	1,460	J	683	N	1,350	Y1	883	Z3	583

Measurements are in mm

NEW TWINGO RENAULTSPORT 133

1.6 VVT 133

New Twingo Renaultsport 133 is extremely well equipped. But there are also options and personalisation available to make the car your own.



INTERIOR

1. Renaultsport gearshift lever with synthetic leather gaiter
2. Renaultsport front seats with Renaultsport logo
3. Renaultsport leather steering wheel with black centre band



PERSONALISATION

Side chequered flag decals - available in white, anthracite grey and black



Grey shadows decals

EQUIPMENT

New Twingo Renaultsport 133 Core Features

DRIVER AND DRIVER AIDS

- Cruise control and speed limiter
- Electrically variable power assisted steering
- Gear change reminder light
- Renaultsport rev counter
- Renaultsport chassis
- Specifically calibrated sports power steering

EXTERIOR STYLING

- 16" 'Emotion' alloy wheels
- Body coloured side rubbing strips
- Extended sills and wheel arches
- Front fog lights black surround
- Gloss black door mirror caps
- Renaultsport rear spoiler

COMFORT AND CONVENIENCE

- 4 x 20W RDS radio CD player with USB input and Bluetooth
- Brushed aluminium pedals
- Dashboard tray on driver's side
- Electric front windows
- Glove box with integrated sunglasses holder
- Height adjustable driver's seat
- Height adjustable steering wheel
- Independent sliding and folding rear seats
- Manual air conditioning
- Map pockets on front seats
- Parking ticket holder and covered mirror on driver's sun visor
- Renaultsport front seats with Renaultsport logo
- Renaultsport leather steering wheel
- Time delay interior courtesy lighting
- Two cup holders on centre console

LIGHTING AND VISIBILITY

- Electrically operated door mirrors (Gloss Black)
- Extra tinted glass in rear windows and tailgate
- Front fog lights
- Variable speed intermittent windscreen wipers

ACCESSORIES

Please see the accessories information pages starting on page 46.

SAFETY AND SECURITY

- 2 3-point rear seatbelts with pretensioners
- 3-point front seatbelts with pretensioners
- ABS (anti-lock braking system)
- Deadlocking
- Driver's seatbelt warning
- EBA (Electronic Brake Assist)
- EBD (Electronic Brake Distribution)
- Electronic immobiliser
- ESC (Electronic Stability Control) with disconnection function
- Front driver and passenger airbags
- Front lateral airbags
- Front passenger airbag switch
- Full size spare wheel
- Integrated passive anti-submarining system
- New generation front height adjustable headrests
- R.A.I.D. (Renault Anti Intruder Device)
- Rear headrests
- Remote central locking
- Thatcham category 1 alarm
- Two point ISOFIX mounting on rear left seat only

OPTIONS

- 17" Anthracite coloured alloy wheels
- 17" Black alloy wheels
- Anthracite Pack:
 - front blade, door mirrors and rear spoiler - anthracite colour
 - front fog lights chrome surrounds
- Automatic climate control
- Curtain airbags
- Electric panoramic sunroof
- Metallic paint
- Renaultsport Cup chassis - lower ride height and stiffened springs and dampers (vs Renaultsport chassis) and 17" anthracite/gloss black Renaultsport alloy wheels
- Renaultsport Monitor - on-board performance tracking system

TECHNICAL SPECIFICATIONS

VERSION	Renaultsport Chassis		Cup Chassis
ENGINE			
Capacity	(cc)	1598	
Bore x stroke	(mm)	79.5 x 80.5	
Cylinders		4	
Valves		16	
Compression ratio		11 : 1	
Maximum power	(kW ISO)	98	
	(hp DIN)	133	
	(rpm)	6750	
Maximum torque	(Nm ISO)	160	
	(rpm)	4400	
Injection type		Multipoint	
Fuel type		Petrol	
WEIGHT			
Kerb weight	(kg)	1050	
	(lbs)	2315	
Front kerb weight	(kg)	682	
	(lbs)	1053	
Rear kerb weight	(kg)	368	
	(lbs)	811	
GEARBOX			
Number of forward gears		5	
Vehicle speeds (mph) at 1000 rpm:	in 1st gear	4.9	
	2nd	8.15	
	3rd	11.5	
	4th	14.75	
	5th	18.5	
SUSPENSION			
Roll centre height front/rear	(mm)	90/160	
Flexibility front/rear	(N/mm)	32/51	36/58
Natural frequency	(Hz)	1.47/1.68	1.54/1.78
BRAKING SYSTEM			
ABS with EBD		Yes (with disconnectable ESC)	
Brake servo diameter	(inches)	9	
Front discs (ventilated) diameter	(mm)	280	
Rear discs diameter	(mm)	240	
STEERING			
Power assisted		Variable electric	
Number of turns (lock to lock)		1.345	
Turning circle between kerbs / walls	(m)	10.39 / 10.76	
WHEELS / TYRES			
Wheels		7" J16	7" J17
Tyres		195/45 R16	195/40 R17
CAPACITIES			
Fuel tank	(litres)	40	
PERFORMANCE			
0-100 kph / 0-62 mph	(secs)	8.7	
Maximum speed	(mph)	125	
	(kph)	201	
Drag coefficient	(Sx)	0.745	
FUEL ECONOMY			
Urban cycle	(mpg)	32.5	
	(litres/100km)	8.7	
Extra urban cycle	(mpg)	52.3	
	(litres/100km)	5.4	
Combined cycle	(mpg)	43.5	
	(litres/100km)	6.5	
CO ₂ emissions	(g/km)	150	
SERVICING INTERVALS			
Service interval (whichever is the sooner)		12,500 miles / 1 year	



CLIO RENAULTSPORT RANGE

FUN AND PERFORMANCE GUARANTEED

Welcome to the famous, award winning Clio Renaultsport 200. It features a more powerful engine than its predecessor (the Clio Renaultsport 197), with improved low-down torque, economy and emissions, coupled with a new, more aggressive design due to the F1-styled front blade. With superb alloy wheels and rear diffuser, the Clio Renaultsport 200 is the epitome of performance, style and ultimately fun.

“Simply the most accomplished, dynamically proficient hot hatch this side of 20 grand. It’s that good.” (John McIlroy, AUTOCAR)





CLIO RENAULTSPORT 200 CUP 2.0 VVT 200

Clio Renaultsport 200 Cup is the most track-focussed member of the Clio Renaultsport family. The Clio Renaultsport 200 Cup comes with Cup chassis as standard. It offers a lower ride height and stiffer springs and dampers for performance that will blow you away, along with the best power-to-weight ratio in its class (166hp per tonne).

Ride height is 7mm lower than that of the standard chassis. Last but not least, the Cup comes with a higher ratio steering rack (7.5% quicker than the standard chassis) which enhances feedback to the driver in conditions of varying grip. Optional Renaultsport Recaro seats and eye-catching Renault i.d. 17" 'Speedline' alloy wheels in satin black give the Clio Renaultsport 200 Cup a look that's every bit as thrilling as the ride.



Image shows Cup spoiler (accessory)

CLIO RENAULTSPORT 200 CUP

2.0 VVT 200

Experience the thrill of the Renaultsport ride with Renault brand levels of comfort and cool. The highly developed Cup chassis pushes you to achieve driving experiences you never thought possible. The choice of four striking paint colours, including sleek Renault i.d. Glacier White, give the Clio Renaultsport 200 Cup a profile that's as remarkable as its performance.



1. Engine air extraction vents
2. GT rear spoiler (optional)
3. Drilled aluminium pedals
4. Black gloss 'Renaultsport' rear air diffuser with twin exhausts

WHEELS



5. 17" 5-spoke 'Renaultsport' alloy wheels in anthracite
6. Renault i.d. 17" 5-spoke 'Speedline' alloy wheels in satin black (optional)

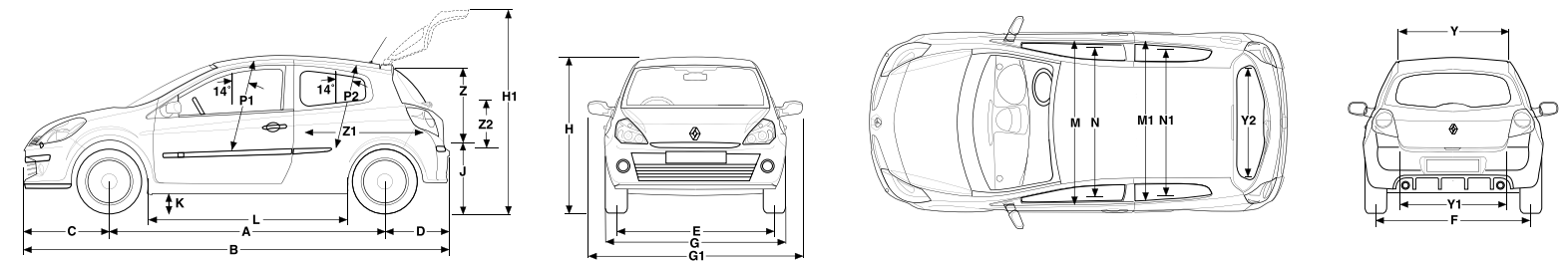
COLOURS



It should be noted that printing limitations do not permit these subtle paintwork shades to be shown with absolute accuracy. Only personal inspection of the Clio at your Renault Dealer will reveal it in its true colours. From time to time changes are made to the colour range. Please check availability with your Renault Dealer.

NM = Non-metallic Supergloss
MP = Metallic Pearlescent
MI = Metallic Illusion

DIMENSIONS



Boot volume									
Volume of boot space (litres)							288		
Maximum boot space with rear seats folded (litres)							1,038		
A	2,585	F	1,520	L	1,677	P1	907	Z1	1,300
B	4,017	G	2,025	M	1,400	Y	848	Z2	541
C	826	H	1,484	M1	1,412	Y1	894		
D	606	H1	1,994	N	1,382	Y2	1,034		
E	1,520	J	678	N1	1,362	Z	652		

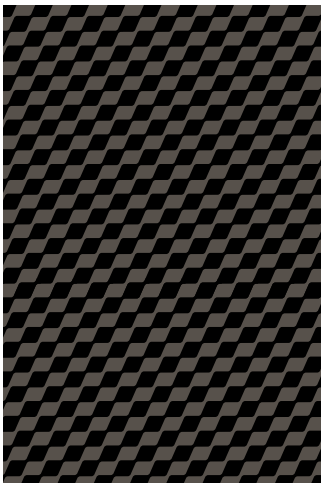
Measurements are in mm

CLIO RENAULTSPORT 200 CUP

2.0 VVT 200

The Clio Renaultsport 200 Cup is a true track animal due to the standard Cup chassis that offers a lower ride height and stiffer springs and dampers. Combined with a higher ratio steering rack that enhances feedback to the driver in conditions of varying grip, it gives a level of performance that will put Ferraris and Porsches to shame through the corners and put a big smile on your face at the same time.

The Cup chassis offers enhanced handling, response and style to truly dedicated drivers. Stiffer springs and dampers and a lower ride height (-7mm) reduces body roll and allows greater stability through corners. The steering rack is 7.5% quicker than the standard Clio Renaultsport 200 meaning immediate response to driver input. For added sports styling, the cup chassis also comes with 17" anthracite alloy wheels and red painted Brembo front brake callipers.



1. Black centre console with satin chrome dashboard inserts and black air vent surrounds (image shows optional air conditioning)
2. 'Renaultsport' cloth upholstery in black and grey
3. 'Renaultsport' monitor (optional)

EQUIPMENT

Clio Renaultsport 200 Cup Core Features

DRIVER AND DRIVER AIDS

- 215 / 45 R17 Continental Sport Contact 3 tyres
- Cup Chassis (lower ride height, stiffer springs and dampers and 7.5% quicker steering ratio vs standard Clio 200)
- Gearshift indicator warning light and sound
- Red painted Brembo brake callipers
- White Renaultsport rev counter

EXTERIOR STYLING

- Alloy wheels - 17" 5-spoke 'Renaultsport' anthracite wheels
- Black gloss front bumper
- Black gloss 'Renaultsport' rear air diffuser with twin exhausts
- Door mirrors - black
- F1 style front blade
- 'Renaultsport' extended front wings with integrated side air extractors and extended rear wings and sills
- Side protection mouldings - black
- Windows - tinted

COMFORT AND INTERIOR FEATURES

- 4 x 20W radio CD MP3 reader with fingertip remote controls and 2 tweeters (including RCA socket in front of gear lever)
- Air recirculation
- Black centre console with black dashboard inserts and air vent surrounds
- Door mirrors - manual internally adjustable with driver's blind spot eliminating mirror
- Drilled aluminium pedals
- Gearknob - leather
- Multi-functional trip computer
- Seats - driver's height and lumbar adjustment (not with Renaultsport Recaro front seats)
- Seats - rear one piece folding
- Steering wheel - height adjustable
- Steering wheel - leather
- Upholstery - 'Renaultsport' cloth in black and grey

LIGHTING AND VISIBILITY

- Headlights - double optic with chrome surrounds
- Headlights - 'See Me Home'
- Windscreen wipers - front variable speed
- Windscreen wipers - rear wash wipe

ACCESSORIES

Please see the accessories information pages starting on page 46.

SAFETY AND SECURITY

- ABS with EBD (Electronic Brake Distribution)
- Airbags - anti-submarining (not with Renaultsport Recaro front seats)
- Airbags - driver and front passenger two stage auto-adaptive
- Airbags - front lateral
- Airbags - front passenger deactivation (not with Renaultsport Recaro front seats)
- Anti-drill door locks and locking fuel cap
- Deadlocking
- ESC (Electronic Stability Control) with understeer control and 100% disconnection function
- Headrests - front new generation height adjustable SRP (System for Restraint and Protection)
- Insurance approved alarm (Thatcham category 1)
- Insurance approved engine immobiliser (Thatcham category 2)
- R.A.I.D. (Renault Anti Intruder Device)
- Remote central locking key
- Seatbelts - height adjustable 3-point with integrated pretensioners and load limiters
- Seatbelts - two 3-point rear
- Tyre inflation kit (in lieu of spare wheel)

OPTIONS

- 4 x 20W radio CD MP3 reader and Bluetooth hands free system with fingertip remote controls, 4 speakers and multi-functional TunePoint (must be ordered with manual air conditioning)
- Metallic paint
- Renault i.d. Glacier White paint
- Metallic Pearlescent Deep Black paint
- Renault i.d. 17" 'Speedline' alloy wheels - satin black
- Renaultsport Recaro front seats
- GT rear spoiler
- Manual air conditioning
- Renaultsport monitor

OPTION PACKS

- Renaultsport 200 Cup Protection Pack - includes curtain airbags, two 3-point rear seatbelts with pretensioners on the outer rear seats and two height-adjustable rear headrests with two pre-set positions

TECHNICAL SPECIFICATIONS

VERSION	2.0 VVT 200 with Cup Chassis	
ENGINE		
Induction capacity	(cc)	1998
Bore x stroke	(mm)	82.7 x 93
Cylinders		4 in line
Valves		16
Compression ratio		11.5 : 1
Maximum power	kw ISO (hp DIN)	147.5 (200) to 1100
Maximum torque	(Nm ISO) (mkg DIN)	215 at 5400
Injection type		Multipoint injection
Fuel type		Unleaded petrol
Catalytic converter		Standard
WEIGHT		
Kerb vehicle weight (unladen)	(kgs)	1204
	(lbs)	2654
Gross vehicle weight	(kgs)	1690
	(lbs)	3726
Front axle weight	(kgs)	763
	(lbs)	1682
Rear axle weight	(kgs)	441
	(lbs)	972
GEARBOX		
Number of forward gears		6
Vehicle speeds (mph) at 1000 rpm	in 1st gear	4.91
	2nd gear	7.84
	3rd gear	10.87
	4th gear	13.70
	5th gear	17.00
	6th gear	20.36
BRAKING SYSTEM		
ABS with EBD		Yes (ABS = Bosch 8.0)
ESC		Standard - with understeer control
Brake servo diameter	(inches)	10
Front	(mm)	312 / 28
Rear	(mm)	DP - 300 / 11
SUSPENSION		
Front		Renaultsport PerfoHub independent steering axis front suspension
Rear		Torsion beam with programmed deflection - coil springs
Diameter anti-roll bar	(mm)	21
Flexibility front	(N/mm)	54.6
Flexibility rear	(N/mm)	65
STEERING		
Power assisted		Variable electric as standard
Number of turns (lock to lock)		2.83
Turning circle between kerbs / walls	(m)	11 / 11.4
Wheels		7.5 J 17"
Tyres		215 / 45 R17 Continental Sport Contact 3
CAPACITIES		
Fuel tank capacity	gallons (litres)	12.1 (55)
Luggage capacity	(litres)	288
PERFORMANCE		
0-62 mph (0-100 km/h)	(secs)	6.9
Maximum speed	(mph)	141
	(kph)	225
FUEL CONSUMPTION		
CO ₂ emissions	(g/km)	190
Urban cycle	(mpg)	25.0
	(litres/100km)	11.3
Extra urban cycle	(mpg)	44.1
	(litres/100km)	6.4
Combined cycle	(mpg)	34.4
	(litres/100km)	8.2
SERVICING INTERVALS		
Service interval (whichever is the sooner)		12,000 miles / 2 years

CLIO RENAULTSPORT 200

2.0 VVT 200

The Clio Renaultsport 200 combines performance, style and luxury into an all-round class-leading package. With standard features such as climate control, cruise control, Renault keyless entry with push button start, and automatic headlights and front windscreen wipers, the Clio Renaultsport 200 provides the ultimate blend of luxury with functionality. The package is completed with 17" Renaultsport alloy wheels, front fog lights and side air extractors that give the car a very aggressive and sports-orientated style to further enhance its performance pedigree.



CLIO RENAULTSPORT 200

2.0 VVT 200

Comfort and style are Renault hallmarks, and the Clio Renaultsport 200 is no exception - with levels of equipment that would put many luxury saloons in the shade.



1. Black gloss 'Renaultsport' rear air diffuser with twin exhausts
2. 'Renaultsport' cloth upholstery in black and grey
3. Carminat TomTom® satellite navigation system (optional)
4. Renaultsport badge on tailgate

WHEELS

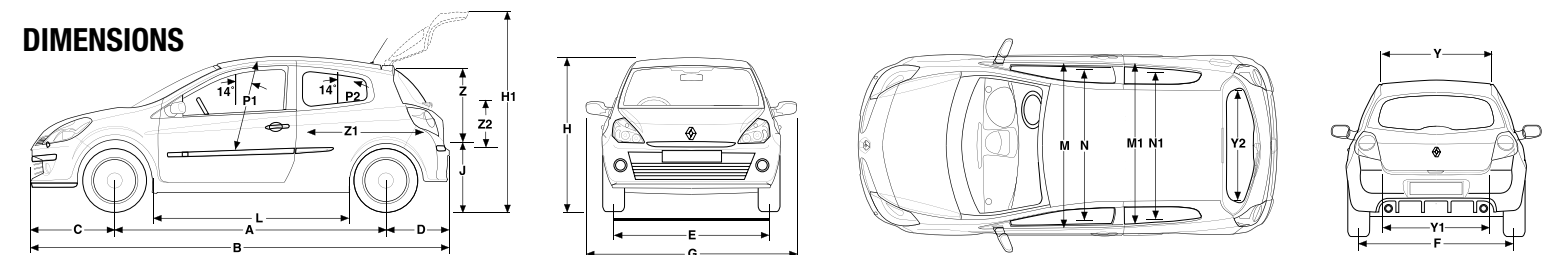


5. 17" 5-Spoke 'Renaultsport' alloy wheels
6. 17" 5-Spoke 'Renaultsport' alloy wheels in anthracite (optional - only with Cup Chassis)
7. 17" 'Speedline' alloy wheels in black

COLOURS



DIMENSIONS



Boot volume									
Volume of boot space (litres)							288		
Maximum boot space with rear seats folded (litres)							1,038		
A	2,585	F	1,520	L	1,677	P1	907	Z1	1,300
B	4,017	G	2,025	M	1,400	Y	848	Z2	541
C	826	H	1,484	M1	1,412	Y1	894		
D	606	H1	1,994	N	1,382	Y2	1,034		
E	1,520	J	678	N1	1,362	Z	652		

Measurements are in mm

CLIO RENAULTSPORT 200

2.0 VVT 200



1a



2a



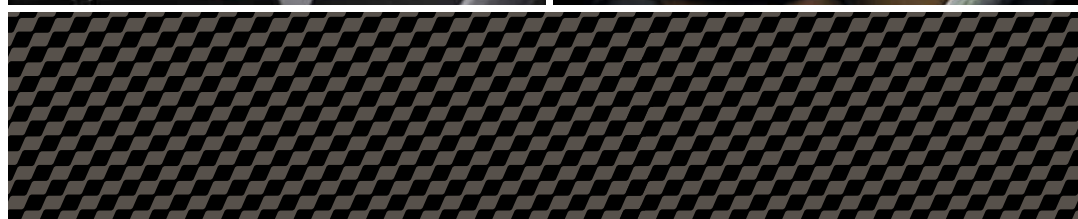
3



1b



2b



1a. Zinc grey centre console with zinc grey chrome dashboard inserts and air vents

1b. 'Renaultsport' cloth upholstery in black and grey

2a. 'Renaultsport' leather upholstery (optional)

2b. 'Renaultsport' Recaro front seats in black and yellow (optional)

3. Carbon centre console with carbon dashboard inserts (optional)

EQUIPMENT

Clío Renaultsport 200 Core Features

DRIVER AND DRIVER AIDS

- 215 / 45 R17 Continental Sport Contact 3 tyres
- Cruise control and speed limiter
- Gearshift indicator warning light and sound
- White Renaultsport rev counter

EXTERIOR STYLING

- Alloy wheels - 17" 5-spoke 'Renaultsport'
- Black gloss front bumper
- Black gloss 'Renaultsport' rear air diffuser with twin exhausts
- Door handles - exterior satin chrome
- Door mirrors - black gloss finish
- F1 style front blade
- 'Renaultsport' extended front wings with integrated side air extractors and extended rear wings and sills
- Side protection mouldings - black
- Windows - tinted

COMFORT AND INTERIOR FEATURES

- 4 x 20W radio CD MP3 reader with fingertip remote controls and 2 tweeters (including RCA socket in front of gear lever)
- Automatic climate control
- Air recirculation
- Door mirrors - electric heated with temperature sensor and driver's blind spot eliminating mirror
- Drilled aluminium pedals
- Gearknob - leather
- Keycard - hands free, with reach adjustable steering column
- Multi-functional trip computer
- Seats - driver's height and lumbar adjustment (not with Renaultsport Recaro front seats)
- Seats - rear 60:40 split folding (rear only)
- Steering wheel - height adjustable
- Steering wheel - Renaultsport leather with stitched red centreband
- Upholstery - 'Renaultsport' cloth in black and grey
- Windows - electric front with anti-pinch function and one touch control on driver's side
- Zinc grey centre console with zinc grey dashboard inserts and air vent surrounds

LIGHTING AND VISIBILITY

- Automatic headlights and windscreen wipers
- Front fog lights
- Headlights - double optic with black surrounds
- Headlights - 'See Me Home'
- Windscreen wipers - front variable speed
- Windscreen wipers - rear wash wipe door mirrors

SAFETY AND SECURITY

- ABS with EBD (Electronic Brake Distribution)
- Airbags - anti-submarining (not with Renaultsport Recaro front seats)
- Airbags - driver and front passenger two stage auto-adaptive
- Airbags - front lateral curtain
- Airbags - front passenger deactivation (not with Renaultsport Recaro front seats)
- Anti-drill door locks and locking fuel cap
- Deadlocking
- ESC (Electronic Stability Control) with understeer control and 100% disconnection function
- Headrests - front new generation height adjustable SRP (System for Restraint and Protection)
- Headrests - rear two height adjustable
- Insurance approved alarm (Thatcham category 1)

- Insurance approved engine immobiliser (Thatcham category 2)
- ISOFIX child seat mounting points on outer rear seats
- R.A.I.D. (Renault Anti Intruder Device)
- Remote central locking key
- Seatbelts - height adjustable 3-point with integrated pretensioners and load limiters
- Seatbelts - two x 3 point rear
- Tyre inflation kit (in lieu of spare wheel)

OPTIONS

- 4 x 20W radio CD MP3 reader and Bluetooth hands free system with fingertip remote controls, 4 speakers and multi-functional TunePoint
- Cup Chassis (lower ride height, stiffer springs and dampers and 7.5% quicker steering ratio vs standard Clío 200; red-painted Brembo brake callipers)
- Privacy glass on rear windows and tailgate
- Electrically heated and folding door mirrors with temperature sensor and driver's blind spot eliminating mirror
- Carminat TomTom Live® Navigation system (not compatible with Renaultsport Monitor Pack)
- Carminat TomTom additional mapping - Western Europe (not compatible with Renaultsport Monitor Pack)
- Double optic fixed cornering lights with black surrounds
- Electronic panoramic sunroof with integrated sunblind (not available with Cup Chassis)
- Metallic paint
- Renault i.d. Glacier White paint
- Renault i.d. Liquid Yellow paint
- Renault i.d. Pearl White paint
- Renault i.d. Deep Black roof (available with any paint)
- Renault i.d. 17" 'Speedline' alloy wheels - satin black
- Renaultsport Recaro front seats
- Front and rear Renault i.d. leather seats
- GT rear spoiler
- Rear parking sensors - body coloured

OPTION PACKS

- Renault i.d. 'Carbon Trim' – Interior Pack (including carbon centre console with carbon dashboard inserts)
- Renault i.d. 'Carbon Trim' – Renaultsport Recaro Interior Pack (including carbon centre console with carbon dashboard inserts)
- Renault i.d. 'Carbon Trim' – Renault i.d. Leather Interior Pack (including carbon centre console with carbon dashboard inserts)
- Renaultsport Monitor Pack – includes Renaultsport Monitor onboard performance tracking system; 4 x 20W RDS radio CD MP3 reader and Bluetooth hands free system with fingertip remote controls, 4 speakers and multi-functional TunePoint (not available with Carminat TomTom Live® navigation system)
- Cup Chassis – lower ride height and stiffer springs and dampers, also includes 17" 5-spoke Renaultsport anthracite alloy wheels and Brembo red painted brake callipers

ACCESSORIES

Please see the accessories information pages starting on page 46.

TECHNICAL SPECIFICATIONS

VERSION	2.0 VVT 200 with Cup Chassis	2.0 VVT 200 with Sport Chassis
ENGINE		
Induction capacity	(cc)	1998
Bore x stroke	(mm)	82.7 x 93
Cylinders		4 in line
Valves		16
Compression ratio		11.5 : 1
Maximum power	kw ISO (hp DIN)	147.5 (200) to 7100
Maximum torque	(Nm ISO)	215 at 5400
Injection type		Multipoint injection
Fuel type		Unleaded petrol
Catalytic converter		Standard
WEIGHT		
Kerb vehicle weight (unladen)	(kgs)	1240
	(lbs)	2734
Gross vehicle weight	(kgs)	1690
	(lbs)	3726
Front axle weight	(kgs)	786
	(lbs)	1733
Rear axle weight	(kgs)	454
	(lbs)	1001
GEARBOX		
Number of forward gears		6
Vehicle speeds (mph) at 1000 rpm	in 1st gear	4.91
	2nd gear	7.84
	3rd gear	10.87
	4th gear	13.70
	5th gear	17.00
	6th gear	20.36
BRAKING SYSTEM		
ABS with EBD		Yes (ABS = Bosch 8.0)
ESC		Standard - with understeer control
Brake servo diameter	(inches)	10
Front	(mm)	312 / 28
Rear	(mm)	DP - 300 / 11
SUSPENSION		
Front		Renaultsport PerfoHub independent steering axis front suspension
Rear		Torsion beam with programmed deflection - coil springs
Diameter anti-roll bar	(mm)	21
FLEXIBILITY		
Front	(N/mm)	54.6
Rear	(N/mm)	65
STEERING		
Power assisted		Variable electric as standard
Number of turns (lock to lock)	(m)	2.83
WHEELS / TYRES		
Wheels		7.5 J 17"
Tyres		215 / 45 R17 Continental Sport Contact 3
CAPACITIES		
Fuel tank capacity	gallons (litres)	12.1 (55)
Luggage capacity	(litres)	288
PERFORMANCE		
0-62 mph (0-100 km/h)	(secs)	6.9
Maximum speed	(mph)	141
	(kph)	225
FUEL CONSUMPTION		
CO ₂ emissions	(g/km)	190
Urban cycle	(mpg)	25.0
	(litres/100km)	11.3
Extra urban cycle	(mpg)	44.1
	(litres/100km)	6.4
Combined cycle	(mpg)	34.4
	(litres/100km)	8.2
SERVICING INTERVALS		
Service interval (whichever is the sooner)		12,000 miles / 2 years



MÉGANE RENAULTSPORT RANGE

AN UNRIVALLED COMBINATION OF STYLE, PERFORMANCE AND HANDLING

Following on from the successful and critically acclaimed Mégane Renaultsport 250 range, comes the latest Mégane Renaultsport 265 range. The two-litre 16-valve turbocharged petrol engine that powers the Mégane Renaultsport 265 boasts maximum power of 265hp and peak torque of 360Nm. Selecting the 'Sport Mode' releases the full 265hp, the default setting produces 250hp for improved fuel economy.

Both the Cup and 265 boast two specific features aimed at heightening the enjoyment delivered by the vehicle's performance. Renaultsport Dynamic Management enables one of three modes for the ESC to be selected - 'On' the default mode, 'Sport' for less intrusive ESC action and the full 265hp, and 'Off' (complete disengagement).

Secondly, the optional Renaultsport Monitor. This technology takes its inspiration from the world of motor sport, with a central dashboard display that provides information about, among other things, real-time engine performance, gearchange warning, and 0-60 acceleration.

Finally, with the new Stop & Start engines which benefit from Formula 1 technology, fuel consumption and CO₂ emissions are reduced without affecting the performance of the car.

The Mégane Renaultsport 265 range comes with a fantastic level of standard equipment, but still offering plenty of choice for those who like to personalise their car.

**"There is no hot hatch I'd rather be driving."
(Richard Meaden, EVO)**



MÉGANE RENAULTSPORT 265 CUP

2.0 VVT 265 Stop & Start

The Mégane Renaultsport 265 Cup has the awesome power of the 265hp engine and in addition, benefits from the performance focussed Cup chassis. This high performance chassis features a number of features to give the ultimate driving experience.

The mechanical limited slip differential ensures that all 265 horses are transmitted to the road, whilst the stiffer springs, dampers and anti-roll bars take the handling to a whole new level. It also features grooved brake discs, red brake callipers and the stunning new 18" matt black 'Tibor' alloy wheels shod with 235/40 R18 Michelin Pilot Sport 2 tyres.



MÉGANE RENAULTSPORT 265 CUP

2.0 VVT 265 Stop & Start

The Mégane Renaultsport 265 Cup is not just an engineering masterpiece, it's also beautifully designed. The styling is sleek and purposeful and the interior is uncompromisingly sporty, yet comfortable. From the snarl of its central exhaust pipe to the 18" alloy wheels and alloy pedals - perfectly positioned for high performance heel and toe throttle control, this is a driver's car through and through.

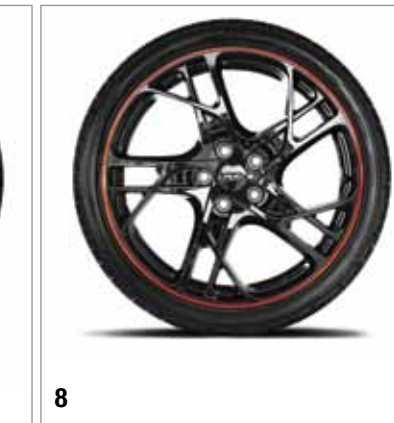


TomTom pictured is optional



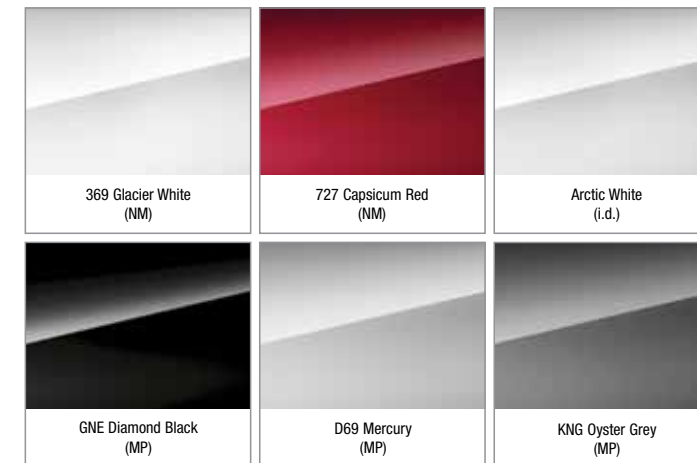
1. Drilled aluminium pedals
2. Red Brembo® brake callipers and grooved discs (features optional 19" 'Steev' Speedline gloss black alloy wheels and Renaultsport 'Red' design pack)
3. Striking and sporty interior (features optional Recaro seats)
4. Leather gear knob with contrasting stitching
5. Renaultsport monitor (optional)

WHEELS



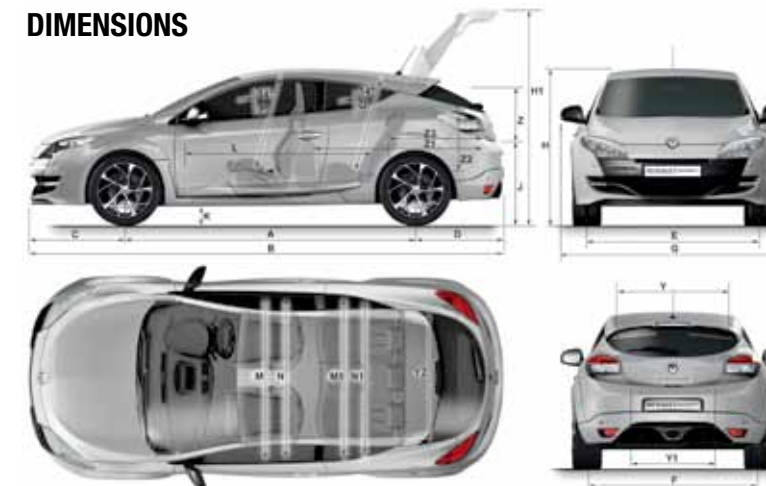
6. 18" 'Tibor' matt black alloy wheels
7. 19" 'Steev' Speedline diamond cut alloy wheels (optional)
8. 19" 'Steev' Speedline gloss black alloy wheels (optional)

COLOURS



It should be noted that printing limitations do not permit these subtle paintwork shades to be shown with absolute accuracy. Only personal inspection of the Mégane at your Renault Dealer will reveal it in its true colours. From time to time changes are made to the colour range. Please check availability with your Renault Dealer.
 NM = Non-metallic Paint
 MP = Metallic Paint
 i.d. = i.d. Metallic Paint

DIMENSIONS



A	Wheelbase	2,636	M1	Rear elbow room	1,400
B	Overall length	4,299	N1	Front shoulder room	1,420
C	Front overhang	860	N1	Rear shoulder room	1,266
D	Rear overhang	803	P	Front headroom measured at 14°	873
E	Front track	1,588	Q	Rear headroom measured at 14°	832
F	Rear track	1,545	Y	Upper boot aperture width / maxi	940 / 980
G	Overall width without interior mirrors / with interior mirrors	1,848 / 2,037	Y1	Lower boot aperture width	760
H	Overall height	1,435	Y2	Inside width between wheel arches	1,152
H1	Unladen height with hatch open	1,990	Z	Height of rear opening	463
J	Unladen sill height	830	Z1	Maximum loading length	1,550
K	Ground clearance	120	Z2	Height up to the parcel shelf	510
L	Cabin length	1,702	Z3	Load length behind rear bench seat	854
M1	Front elbow room	1,480			

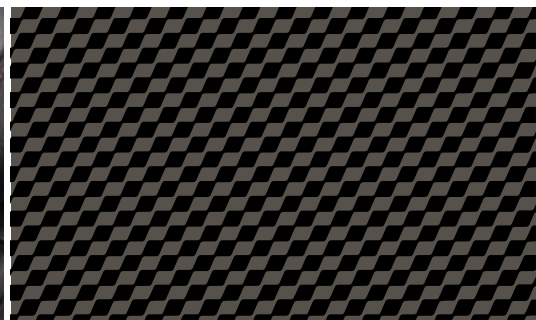
Measurements are in mm

MÉGANE RENAULTSPORT 265 CUP

2.0 VVT 265 Stop & Start



1a



1b



2a



2b

1a. Carbon grey dashboard with carbon grey Renaultsport cloth with red stitching upholstery

1b. Carbon grey Renaultsport cloth with red stitching upholstery

2a. Carbon grey dashboard with yellow seatbelts and yellow detailing (optional)

2b. Recaro seats, carbon grey cloth and synthetic leather with yellow detailing and stitching (optional)

EQUIPMENT

Mégane Renaultsport 265 Cup

Core Features

DRIVER AND DRIVER AIDS

- Cruise control
- Cup Chassis - stiffer springs / dampers / anti-roll bar
- Grooved brake discs
- Height and reach adjustable steering wheel
- Limited Slip Differential (LSD)
- Red brake callipers
- Renaultsport analogue speedometer
- Renaultsport analogue rev counter (grey)
- Renaultsport door sill kick plates
- Renaultsport drilled aluminium pedals
- Renaultsport Dynamic Management (three-mode ESC) with Sport function
- Renaultsport leather steering wheel with stitched centreband
- Renaultsport PerfoHub double-axis front suspension
- Speed limiter
- Tyre inflation kit

EXTERIOR STYLING

- 18" 8.25J 'Tibor' alloy wheels in matte black with 235/40 R18 95Y Michelin Pilot Sport 2 tyres
- Body coloured door handles (Gloss black on Capsicum Red vehicles)
- Door mirrors in gloss black
- Renaultsport extended rear spoiler
- Renaultsport extended wheel arches and side protection mouldings
- Renault sport F1-style front blade and centre section of front bumper in gloss black
- Renaultsport F1-style rear diffuser in gloss black
- Wheel centres with R.S. logo

COMFORT AND CONVENIENCE

- 12 volt sockets in front and rear compartments
- 4 x 20W RDS CD MP3 with AUX and USB inputs on the fascia
- Adjustable lumbar support on driver's seat*
- Air conditioning
- Bluetooth connectivity
- Carbon grey Renaultsport cloth upholstery with red stitching, red seatbelts and grey stitched centreband on steering wheel
- Electric front windows - with 'one-touch' facility and anti-pinch
- Electrically operated and heated door mirrors
- Exterior temperature indicator
- Front centre storage console with armrest
- Front under floor storage in driver and front passenger footwells
- Height adjustable driver's seat
- Height adjustable front passenger seat
- Leather gearknob
- Push button start
- Rear parking sensors
- Remote control central locking
- Renaultsport seats with R.S. logo
- Split folding rear seats 60:40
- Synthetic leather door panel inserts with a carbon fibre effect finish

LIGHTING AND VISIBILITY

- Footwell lighting
- Front courtesy lights
- Halogen headlights
- Headlight washers

- Illuminated luggage compartment
- LED daytime running lights (6 x LEDs per side)
- "See me home" headlights

SAFETY AND SECURITY

- 3 rear headrests
- 3 x lap and diagonal rear seatbelts
- ABS
- Deactivation of front passenger airbags*
- Deadlocking
- Driver and front passenger curtain airbags
- Driver and front passenger two stage auto-adaptive airbags
- Front side impact airbags (thorax / pelvis)
- Insurance approved alarm system (Thatcham category 1)
- Insurance approved engine immobiliser (Thatcham category 2)
- ISOFIX child seat fixing points on outer rear seats
- R.A.I.D. (Renault Anti Intruder Device) automatic door locking above 6mph

OPTIONS

- 19" 8.25J 'Steev' Speedline alloy wheels in a diamond cut finish with 235/35 R19 95Y Continental Sport Contact 5 tyres
- 19" 8.25J 'Steev' Speedline alloy wheels in gloss black with a red rim with 235/35 R19 95Y Bridgestone Potenza RE050A tyres
- Arkamys 4 x 35W RDS radio CD MP3 with AUX and USB inputs on the fascia
- Bi-xenon directional headlights with automatic height adjustment (3)
- Carminat TomTom Live satellite navigation system with joystick control and UK mapping (not available with Renaultsport Monitor)
- Carminat TomTom Western European mapping upgrade
- Electrically operated, heated and folding door mirrors
- Emergency spare wheel ilo inflation kit
- Extra tinted rear windows and tailgate
- Metallic paint
- Recaro front seats - Carbon grey cloth and synthetic leather with yellow detailing, yellow seatbelts (front / rear), yellow stitched centreband on steering wheel
- Renault i.d. metallic paint - Arctic White
- Renault keyless entry
- Renaultsport Monitor - on board performance tracking system (not available with Carminat TomTom Live navigation system)
- Renaultsport 'Red' design pack - red striping on front blade, rear diffuser and side protection mouldings
- Tyre pressure monitor (1)

OPTIONS PACK

- Renaultsport Climate Pack: Automatic dual-zone climate control, automatic headlights, automatic rain sensitive windscreen wipers

(1) Must be ordered with Renault keyless entry

(2) Must be ordered with Carminat TomTom Live satellite navigation

(3) Must be ordered with Renaultsport Climate Pack (on 265 Cup)

* Not available with Recaro seats

ACCESSORIES

Please see the accessories information pages starting on page 46.

TECHNICAL SPECIFICATIONS

		Renaultsport 265 Cup Stop & Start
Type number		DZ1802
ENGINE		
Type		F4R*874
Emissions		EURO 5
Type		4 cylinders in line
Valves		16
Material		Iron block / Aluminium head
CC		1998
Bore x stroke	(mm)	82.7 x 93
Compression ratio		8.6:1
Maximum power	(hp)	265 @ 5500 rpm
Maximum torque		360Nm @ 3000 rpm
Injection type		Multipoint
Fuel		Unleaded 95 or 98 RON
TRANSMISSION		
Type		PK4*018
Gears		6 speed manual
Traction control		Yes
Limited slip differential		Yes
Drive ratio		16 / 67
Gear ratios	@ 1000 rpm	
1st		13 / 40 5.69 mph
2nd		19 / 37 9.00 mph
3rd		31 / 43 12.63 mph
4th		38 / 39 17.08 mph
5th		38 / 31 21.48 mph
6th		46 / 31 26.00 mph
SUSPENSION - FRONT		
Type		Renaultsport PerfoHub independent steering axis
Anti-roll bar diameter mm		24.2
Anti-roll bar stiffness	(Da.Nm/deg)	100
Flexibility at point of contact between tyre and the ground	(mm/100kg)	15.2
Natural frequency	(Hz)	1.35
Roll centre height	(mm)	106
Unsprung weight	(kg)	125
SUSPENSION - REAR		
Type		H Frame
Anti-roll bar stiffness	(Da.Nm/deg)	103
Flexibility at point of contact between tyre and the ground	(mm/100kg)	23.9
Natural frequency	(Hz)	1.55
Roll centre height	(mm)	180
Unsprung weight	(kg)	92
BRAKES		
Type of brake		Double x-circuit split
Front discs	(diameter and width in mm)	340 / 28 - ventilated and grooved
Calliper - front		BREMBO 4 pistons (red)
Rear discs	(diameter and width in mm)	290 / 11 - ventilated and grooved
Calliper - rear		Floating single piston
Braking distance - AMS	(metres)	36
ABS		TEVES MK60 ESP
ESC		Renaultsport Dynamic Management 3-stage system (normal / sport / off)
STEERING		
Assistance		Electric
Number of turns lock to lock		2.66
Turning circle between kerbs/walls	(m)	11.35
WHEELS		
Tyres - standard		Michelin Pilot Sport 2 - 235/40 R18 95 Y
Alloy wheels - standard		8.25 J 18
Tyres - optional		-
Alloy wheels - optional		-
Emergency spare wheel		135/80 R17 103M
DIMENSIONS AND WEIGHT		
Length / width / height	(mm)	4299 / 1848 / 1435
Wheelbase	(mm)	2636
Track front / rear	(mm)	1588 / 1545
Kerb weight	(kg)	1379
Distribution front / rear	(%)	65 / 35
Gross train weight	(kg)	1835
Payload	(kg)	456
Towing weight		0
Fuel capacity	(litres)	60
PERFORMANCE		
Aerodynamics	(Cx/SCx)	0.34 / 0.75
Top speed	(km/h) mph	(255) 158
Acceleration		
0 to 62mph		6.0
Standing 400m		14.0
Standing 1000m		25.4
FUEL CONSUMPTION		
Urban Cycle	(mpg)	28.8
	(litres / 100km)	9.8
Extra Urban Cycle	(mpg)	45.6
	(litres / 100km)	6.2
Combined Cycle	(mpg)	37.7
	(litres / 100km)	7.5
CO ₂ emissions	(g/km)	174
SERVICING INTERVALS		
Service interval (whichever is the sooner)		12,500 miles / 2 years

MÉGANE RENAULTSPORT 265

2.0 VVT 265 Stop & Start

From its LED daytime running lights at the front, through to the gloss black diffuser at the rear, the Mégane Renaultsport 265 is the ultimate combination of driving pleasure and luxury. The luxurious Carbon and grey Renaultsport leather upholstery and heated sports seats are comfortable and very supportive. Whilst the automatic dual-zone climate control, quality stereo system and Bluetooth connectivity create the ultimate cabin ambiance.



MÉGANE RENAULTSPORT 265

2.0 VVT 265 Stop & Start

The luxurious Carbon grey Renaultsport leather seats contrast perfectly with the red stitching on the steering wheel and red seatbelts. Choose the optional Recaro seats and the red becomes yellow, giving a whole new interior ambiance.



1. Automatic dual zone climate control
2. Carminat TomTom® Live - joystick control (optional)
3. Rear parking camera (optional)
4. Central rear exhaust
5. Recaro seats (optional)

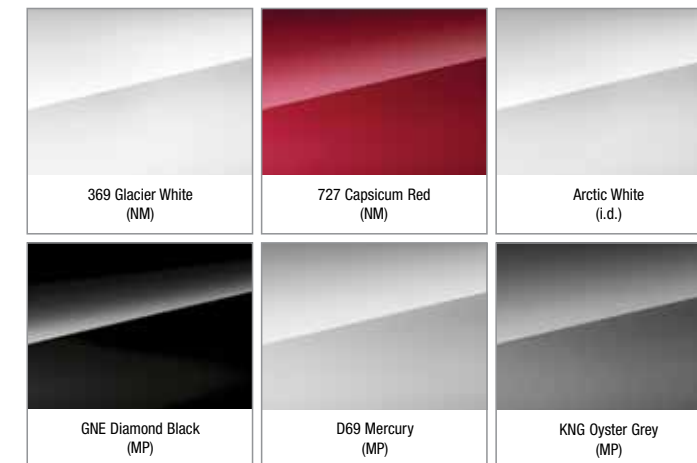
WHEELS



6. 18" 'Tibor' Satin anthracite alloy wheels
7. 18" 'Tibor' matt black alloy wheels*
8. 19" 'Steev' Speedline diamond cut alloy wheels
9. 19" 'Steev' Speedline gloss black alloy wheels

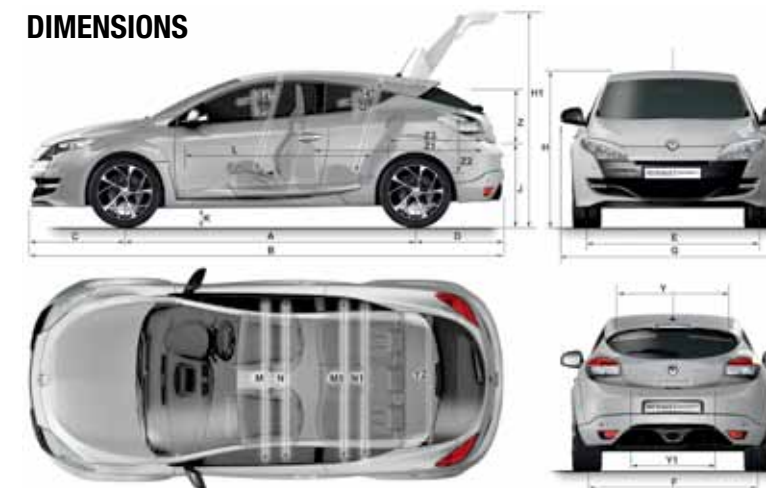
* Only available as part of the Renaultsport Cup Chassis Pack

COLOURS



It should be noted that printing limitations do not permit these subtle paintwork shades to be shown with absolute accuracy. Only personal inspection of the Mégane at your Renault Dealer will reveal it in its true colours. From time to time changes are made to the colour range. Please check availability with your Renault Dealer.
 NM = Non-metallic Paint
 MP = Metallic Paint
 i.d. = i.d. Metallic Paint

DIMENSIONS

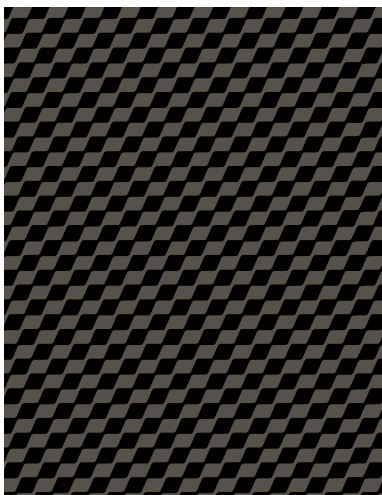


A	Wheelbase	2,636	M1	Rear elbow room	1,400
B	Overall length	4,299	N1	Front shoulder room	1,420
C	Front overhang	860	N1	Rear shoulder room	1,266
D	Rear overhang	803	P	Front headroom measured at 14"	873
E	Front track	1,588	Q	Rear headroom measured at 14"	832
F	Rear track	1,545	Y	Upper boot aperture width / maxi	940 / 980
G	Overall width without interior mirrors / with interior mirrors	1,848 / 2,037	Y1	Lower boot aperture width	760
H	Overall height	1,435	Y2	Inside width between wheel arches	1,152
H1	Unladen height with hatch open	1,990	Z	Height of rear opening	463
J	Unladen sill height	830	Z1	Maximum loading length	1,550
K	Ground clearance	120	Z2	Height up to the parcel shelf	510
L	Cabin length	1,702	Z3	Load length behind rear bench seat	854
M1	Front elbow room	1,480			

Measurements are in mm

MÉGANE RENAULTSPORT 265

2.0 VVT 265 Stop & Start



1. Carbon grey dashboard with Carbon grey Renaultsport leather upholstery
2. Carminat TomTom® Live satellite navigation system (optional)
3. Recaro seats with Carbon grey leather upholstery (optional)
4. Carbon grey dashboard with Carbon and Silver grey two tone leather upholstery

EQUIPMENT

Mégane Renaultsport 265 Core Features DRIVER AND DRIVER AIDS

- Cruise control
- Height and reach adjustable steering wheel
- Renaultsport analogue speedometer
- Renaultsport analogue rev counter (grey)
- Renaultsport door sill kick plates
- Renaultsport drilled aluminium pedals
- Renaultsport Dynamic Management (three-mode ESC) with Sport function
- Renaultsport leather steering wheel with stitched centreband
- Renaultsport PerfoHub double-axis front suspension
- Speed limiter
- Tyre inflation kit

EXTERIOR STYLING

- 18" 8.25J 'Tibor' alloy wheels in satin anthracite with 225/40 R18 92Y Dunlop SP Sport Maxx TT tyres
- Body coloured door handles (Gloss black on Capsicum Red vehicles)
- Door mirrors in gloss black
- Renaultsport extended rear spoiler
- Renaultsport extended wheel arches and side protection mouldings
- Renault sport F1-style front blade and centre section of front bumper in gloss black
- Renaultsport F1-style rear diffuser in gloss black
- Wheel centre caps with R.S. logo

COMFORT AND CONVENIENCE

- 12 volt sockets in front and rear compartments
- 4 x 20W RDS CD MP3 with AUX and USB inputs on the fascia
- Adjustable lumbar support on driver's seat*
- Automatic Dual Zone climate control
- Bluetooth connectivity
- Carbon Grey Renaultsport leather upholstery with red seatbelts and grey stitched centreband on steering wheel
- Electric front windows - with 'one-touch' facility and anti-pinch
- Electrically adjustable driver's seat with memory function*
- Electrically operated and heated door mirrors
- Electrochromic rear view mirror
- Exterior temperature indicator
- Extra tinted rear windows and tailgate
- Front centre storage console with armrest
- Front under floor storage in driver and front passenger footwells
- Heated front seats*
- Height adjustable driver's seat
- Height adjustable front passenger seat
- Leather gearknob
- Push button start
- Rear parking sensors
- Remote control central locking
- Renault keyless entry
- Renaultsport seats with R.S. logo
- Split folding rear seats 60:40 effect finish
- Synthetic leather door panel inserts with a carbon fibre effect finish

LIGHTING AND VISIBILITY

- Automatic headlights
- Automatic rain sensitive windscreen wipers
- Footwell lighting
- Front courtesy lights
- Front driver and passenger sun visors with illuminated vanity mirrors
- Halogen headlights
- Headlight washers
- Illuminated luggage compartment
- LED daytime running lights (6 x LEDs per side)

- Rear courtesy lights
- "See me home" headlights

SAFETY AND SECURITY

- 3 rear headrests
- 3 x lap and diagonal rear seatbelts
- ABS
- Deactivation of front passenger airbags*
- Deadlocking
- Driver and front passenger curtain airbags
- Driver and front passenger two stage auto-adaptive airbags
- Front side impact airbags, (thorax / pelvis)
- Insurance approved alarm system (Thatcham category 1)
- Insurance approved engine immobiliser (Thatcham category 2)
- ISOFIX child seat fixing points on outer rear seats
- R.A.I.D. (Renault Anti Intruder Device) automatic door locking above 6mph
- Tyre pressure monitor

OPTIONS

- 19" 8.25J 'STEEV' Speedline alloy wheels in a diamond cut finish with 235/35 R19 95Y Continental Sport Contact 5 tyres
- 19" 8.25J 'STEEV' Speedline alloy wheels in gloss black with a red rim with 235/35 R19 95 Y Bridgestone Potenza RE050A tyres
- Arkamys 4 x 35W RDS radio CD MP3 with AUX and USB inputs on the fascia
- Bi-Xenon directional headlights with automatic height adjustment
- Carbon and silver grey two tone leather upholstery with grey seatbelts and two tone steering wheel*
- Carminat TomTom® Live satellite navigation system with joystick control and UK mapping (not available with Renaultsport Monitor)
- Carminat TomTom® Western European mapping upgrade
- Electrically operated, heated and folding door mirrors
- Emergency spare wheel ilo inflation kit
- Fixed glass sunroof
- Front parking sensors
- Metallic paint
- Rear parking camera (with front parking sensors) **
- Recaro front seats - Carbon grey leather with yellow seatbelts (front / rear), yellow stitched centreband on steering wheel
- Renault i.d. metallic paint - Arctic White
- Renaultsport Monitor - on board performance tracking system (not available with Carminat TomTom® Live navigation system)
- Renaultsport 'Red' design pack - red striping on front blade, rear diffuser and side protection mouldings
- Visio System by Renault - lane departure warning a and automatic high / low beam system

OPTION PACK

- CUP CHASSIS Pack: 18" 'Tibor' matt black alloys, Michelin Pilot Sport 2 tyres, limited slip differential, stiffer springs / dampers / anti-roll bars, red brake callipers, grooved brake discs

* Not available with Recaro seats

** Must be ordered with Carminat TomTom® Live satellite navigation

ACCESSORIES

Please see the accessories information pages starting on page 46.

TECHNICAL SPECIFICATIONS

	Renaultsport 265 Stop & Start	Renaultsport 265 with Cup Chassis Stop & Start
Type number		DZ1802
ENGINE		
Type		F4R*874
Emissions		EURO 5
Type		4 cylinders in line
Valves		16
Material		Iron block / Aluminium head
CC		1998
Bore x stroke (mm)		82.7 x 93
Compression ratio		8.6:1
Maximum power (hp)		265 @ 5500 rpm
Maximum torque		360Nm @ 3000 rpm
Injection type		Multiport
Fuel		Unleaded 95 or 98 RON
TRANSMISSION		
Type	PK4*019	PK4*018
Gears		6 speed manual
Traction control		Yes
Limited slip differential		Yes
Drive ratio		16 / 67
Gear ratios @ 1000 rpm		
1st	13 / 40	5.62 mph
2nd	19 / 37	8.89 mph
3rd	31 / 43	12.47 mph
4th	38 / 39	16.86 mph
5th	38 / 31	21.21 mph
6th	46 / 31	25.67 mph
SUSPENSION - FRONT		
Type		Renaultsport PerfoHub independent steering axis
Anti-roll bar diameter (mm)		23.4
Anti-roll bar stiffness (Da.Nm/deg)		100.0
Flexibility at point of contact between tyre and the ground (mm/100kg)		22.4
Natural frequency (Hz)		1.18
Roll centre height (mm)		106
Unsprung weight (kg)		125
SUSPENSION - REAR		
Type		H Frame
Anti-roll bar stiffness (Da.Nm/deg)		97
Flexibility at point of contact between tyre and the ground (mm/100kg)		32.9
Natural frequency (Hz)		1.31
Roll centre height (mm)		180
Unsprung weight (kg)		92
BRAKES		
Type of brake		Double x-circuit split
Front discs (diameter and width in mm)		340 / 28 - ventilated
Calliper - front		BREMBO 4 pistons
Rear discs (diameter and width in mm)		290 / 11 - ventilated
Calliper - rear		Floating single piston
Braking distance - AMS (metres)		36
ABS		TEVES MK60 ESP
ESC		Renaultsport Dynamic Management 3-stage system (normal / sport / off)
STEERING		
Assistance		Electric
Number of turns lock to lock		2.66
Turning circle between kerbs/walls (m)		11.35
WHEELS		
Tyres - standard	Dunlop Sport Maxx TT - 225/40 R18 92 Y	Michelin Pilot Sport 2 - 235/40 R18 95 Y
Alloy wheels - standard	8.25 J 18	8.25 J 18
Tyres - optional	-	-
Alloy wheels - optional	-	-
Emergency spare wheel		135/80 R17 103M
DIMENSIONS AND WEIGHT		
Length / width / height (mm)		4299 / 1848 / 1435
Wheelbase (mm)		2636
Track front / rear (mm)		1588 / 1545
Kerb weight (kg)		1379
Distribution front / rear (%)		65 / 35
Gross train weight (kg)		1835
Payload (kg)		456
Towing weight (kg)		0
Fuel capacity (litres)		60
PERFORMANCE		
Aerodynamics (Cx/SCx)		0.34 / 0.75
Top speed (km/h) mph		(255) 158
Acceleration		
0 to 62mph		6.0
standing 400m		14
standing 1000m		25.4
FUEL CONSUMPTION		
Urban Cycle (mpg)		28.8
(litres / 100km)		9.8
Extra Urban Cycle (mpg)		45.6
(litres / 100km)		6.2
Combined Cycle (mpg)		37.7
(litres / 100km)		7.5
CO2 emissions (g/km)		174
SERVICING INTERVALS		
Service interval (whichever is the sooner)		12,500 miles / 2 years

RENAULTSPORT TECHNOLOGY

RENAULTSPORT MONITOR



The Renaultsport Monitor is a unique performance tracking system providing the driver with real-time data. Available across the Renaultsport range, the system takes its inspiration directly from technology employed in motor sport and, until now, seen only on a small number of prestige road cars.

The Renaultsport Monitor collects data through a series of sensors and drivers can scroll through the system's different functions using the steering wheel mounted controls. Information shown on the main dashboard display covers:

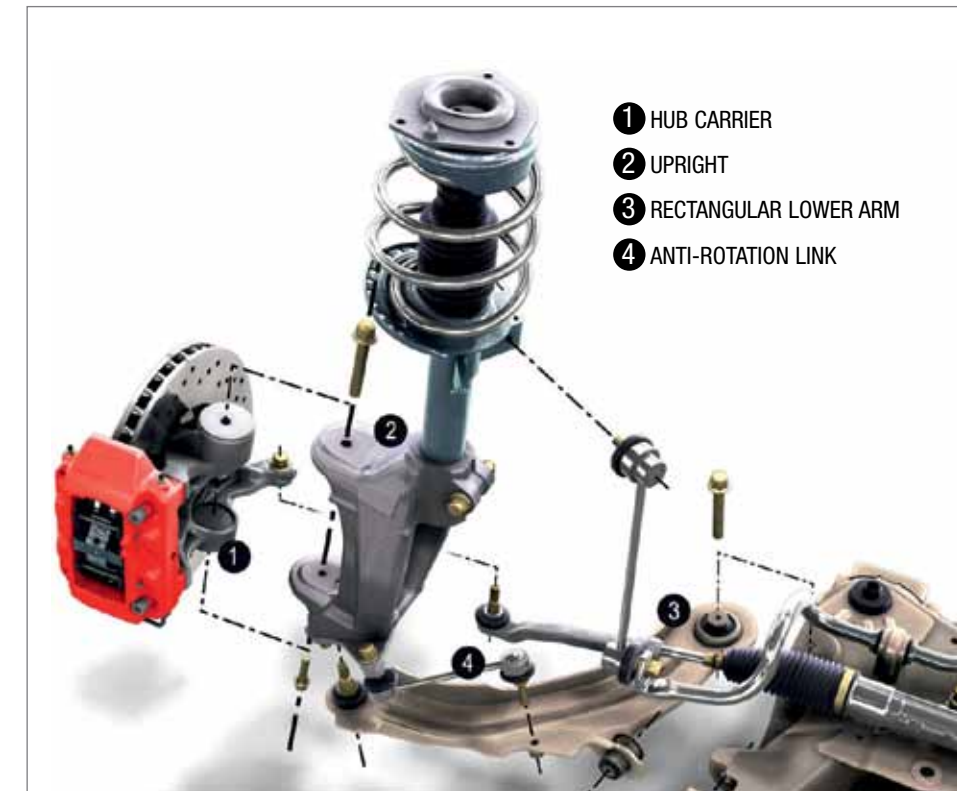
- data for the main engine functions including oil temperature and brakes plus real-time engine performance data (torque, power)
- transverse and longitudinal g-force
- lap timer, with memory function
- performance data, such as acceleration times



On Mégane, the Renaultsport Monitor also enables the driver to modify the throttle pedal mapping. With the 'Sport' mode selected in the Renaultsport Dynamic Management system there is a choice of five throttle settings (linear, normal, snow, sport and extreme). These will adapt the car's acceleration characteristics to the conditions or to the driver's demands. In addition, the gap between the up-shift warning bleep and the rev-limiter can be adjusted in 50rpm increments from zero to 2000rpm.

RENAULTSPORT TECHNOLOGY

PERFOHUB SUSPENSION



Clio Renaultsport 200 and Mégane Renaultsport 265 benefit from the 'PerfoHub' independent steering axis front suspension.

This arrangement ensures stable front suspension geometry under hard acceleration or when applying a significant amount of steering lock, cutting torque-steer.

Renault Sport Technologies' innovative independent steering axis front suspension was first introduced in 2004 and is engineered to overcome the drawbacks commonly associated with powerful front-wheel-drive cars subjected to high forces, such as self-steering input through tight corners and poor straight-line stability induced by torque steer.

The steering axis of the front suspension has been completely separated from the damper, unlike on a MacPherson-type arrangement where the steering axis is attached to the ball-joint of the lower arm and the upper damper mounting. The axis around which the wheel rotates is defined by the pivoting link between the hub carrier and pivot carrier.

The front suspension geometry is consequently less sensitive to forces and torque applied to the driven wheels around their steering axis under hard accelerating and under heavy braking.

RENAULTSPORT TECHNOLOGY

LIMITED SLIP DIFFERENTIAL ON MÉGANE RENAULTSPORT 265

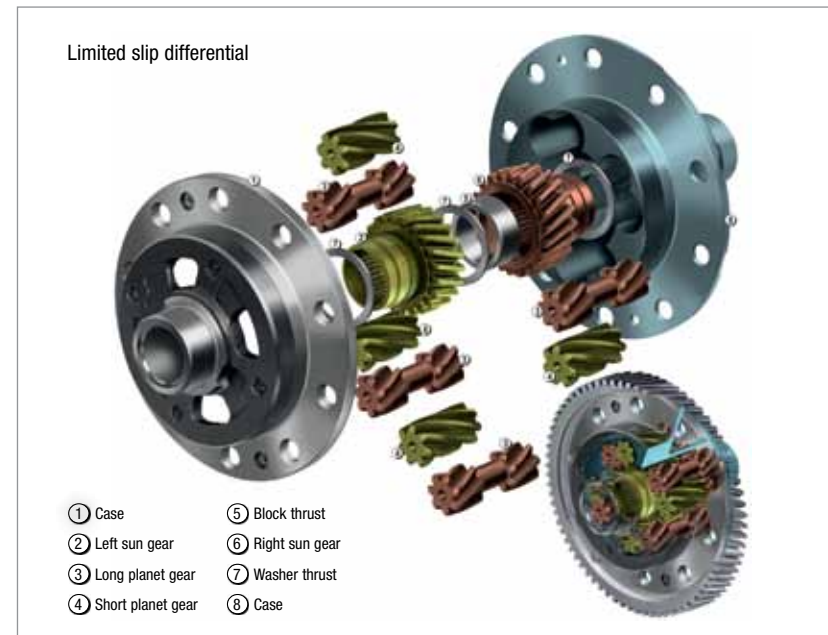
Mégane Renaultsport 265 is available with a choice of two chassis:

- the standard chassis, which delivers the ideal balance between sports performance and everyday driving comfort,
- the Cup chassis which, combined with a limited slip differential, delivers outstanding traction, particularly appealing to owners looking to enjoy themselves on a circuit.

The limited slip differential ensures greater stability under braking. By kicking in immediately, it pushes back the threshold when the ASR traction control intervenes under hard acceleration or when the ESC cuts in when turning into corners, thereby freeing the car's full braking potential. Improved turn-in performance also means that the driver is able to reaccelerate harder and sooner.

In short, in addition to improving the efficient transmission of power to the road, and enhancing performance, the limited slip differential delivers progressive, reassuring handling whatever the driving style.

The limited slip differential is mechanical and comprises a knurled helical gear, and satellite and sun gears with parallel axes. The limited slip function is obtained by the system's mechanical efficiency. When wheelspin occurs, the differential's internal architecture generates friction on the surfaces of the sun gears. This results in a proportion of engine torque being transmitted to the wheel which benefits from the most grip.



RENAULTSPORT TECHNOLOGY

RENAULTSPORT DYNAMIC MANAGEMENT ON MÉGANE RENAULTSPORT 265

A new feature on Mégane Renaultsport 265 is the Renaultsport Dynamic Management system. It optimises the engine sound and allows the driver to choose the degree of electronic aid he or she wants in different situations:

- 'Normal' mode: the default mode when the engine is first started. The Mégane Renaultsport 265 exhaust is designed with specific perforations and baffles to maximise the sound at tick-over and low revs (less than 3,000 rpm). It directs and amplifies the sporty engine mode towards the driver. The ESC, ASR traction control and emergency brake assist are all activated. The system intervenes as soon as it senses that the car is on the verge of sliding. The pedal mapping ensures smooth acceleration, making this mode ideally suited to everyday use.

- 'Sport' mode, for less intrusive ESC action.

Selecting 'Sport' mode releases the 265hp and 360Nm torque for the ultimate Renaultsport experience. It changes the engine and exhaust characteristics to create a more aural experience – especially when you lift off the throttle.

This mode is selected by a short press on the ESC button. Although the ESC and ASR are still active, they intervene at a later point and allow the car to slide to a certain extent, so long as the skid doesn't exceed a given threshold. The pedal mapping is modified to permit swifter engine response and provide extra torque at low revs.

- 'Off' mode, for unfettered enjoyment, principally on a circuit. This mode is activated by a longer push on the ESC button. The electronic stability programme is fully disconnected, while the pedal mapping ensures instant response from the engine and delivers all available torque and over-torque at low revs.

Mode	Exhaust	Pedal Law (if Renaultsport Monitor fitted)	Engine performance	ESC	Emergency brake assist
Normal (at start / by default)	Normal	Normal	250 hp 340 Nm	Safest mode	Yes
Sport (Short press on ESC button)	Sport	Sport (settings available)	265 hp 360 Nm	Sport ESC	Off
Off (Long press on ESC button)				Off	



ACCESSORIES ACROSS THE RENAULTSPORT RANGE



1. Renaultsport rubber mats

This high quality rubber mat with Renaultsport branding will give your vehicle a sporty touch and complete your Renaultsport. Comes with stud fixings to prevent slipping and ensure safety.

2. NextBase Dual 9" screen DVD system

For the ultimate in vehicle entertainment, look no further than the NextBase dual 9" screen DVD system.

3. Renaultsport gear knob

Renaultsport gear lever in satin finish zamac chrome with Renaultsport logo.

4. Chrome mirror cover

Give the outside of your car a luxurious touch with these chrome effect wing mirror covers.

5. G-3 Glasscoat paint protection

Protect your car's paintwork and upholstery - and your investment - for 5 years with our innovative paint protection range.

6. Renaultsport valeting pack

Renaultsport branded valeting bag containing selection of products for all your valeting needs.

ACCESSORIES TWINGO RENAULTSPORT



1. Renaultsport black and white carpet mats

These high quality carpet mats are in keeping with the original trim and help complete your New Twingo Renaultsport.

2. Pedal covers

Inspired by the Twingo Concept Car, these brushed aluminium pedal pad covers reinforce the sportiness of the interior design whilst providing an original touch.

3. O'Car iPhone / iPod radio

Specially designed for the New Twingo Renaultsport, the O'Car radio will enable you to connect directly your iPhone or iPod to your New Twingo Renaultsport.

4. Renaultsport stainless steel exhaust

Give your New Twingo Renaultsport some extra Va Va Voom with our Inox exhaust, specially developed by Renault Sport Technologies.

ACCESSORIES CLIO RENAULTSPORT



1. Renaultsport carpet mats

These high quality carpet mats are in keeping with the original trim and help complete your Clio Renaultsport. Come with stud fixings to prevent slipping and ensure safety. Black with yellow embroidery.

2. Renaultsport steering wheel insert

Renaultsport branded plaque for your Clio Renaultsport.

3. Renaultsport Cup Spoiler

As featured on the Clio Cup race car. The spoiler complements the dynamic and aggressive look of your car. Carbon-fibre effect end plates.

4. Renaultsport 'Carbon effect' side skirts

Aerodynamically designed, the side skirts give a sporty finishing touch to your vehicle. Carbon-fibre effect with Renaultsport logo branding.

ACCESSORIES MÉGANE RENAULTSPORT



1. Renaultsport carpet mats

These high quality carpet mats are in keeping with the original trim and help complete your Mégane Renaultsport. Come with stud fixings to prevent slipping and ensure safety. Black with yellow embroidery.

2. Leather Kit

Black with yellow detailing and Renaultsport embroidery. Made from 100% finest hides for durability and comfort, this interior will age beautifully, shrug off the wear and tear of constant use, and prove very easy to maintain.

3. Renaultsport Diamond Black roof

Make it yours. Customise your Mégane Renaultsport with a stunning rooftop paint job in Diamond Black.

4. Renaultsport chess decal

These chequered stripes will give your Mégane Renaultsport a dynamic and sporty look. Available in Grey Anthracite or Blood Orange.

TRACKDAYS AND EVENTS

RENAULTSPORT OWNERS CAN SHARE THEIR PASSION FOR THEIR CARS THROUGH OUR EVENTS PROGRAMME.

Trackdays

Reserved exclusively for Renaultsport customers, Renaultsport trackdays allow you the opportunity to see what your car is capable of under controlled conditions and improve your driving abilities.

You'll meet the team from Renaultsport and be able to share your experiences with like-minded Renaultsport fans.

At the trackday, as well as driving your own car, you'll be able to try one of the latest Renaultsport models. You will be able to benefit from tuition from professional instructors so that you'll improve your car control skills as well as having great fun!

Renaultsport also offers the enthusiast international trackdays. UK customers can participate alongside European Renaultsport fans either here or on the continent at well-known venues, such as the F1 circuit of Spa-Francorchamps.

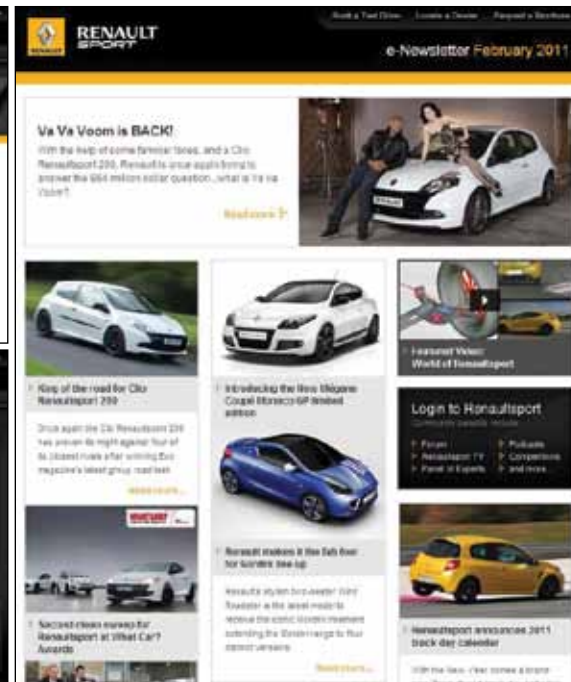


Renaultsport.co.uk and World Series by Renault

Renaultsport.co.uk is where you need to be for all the latest information on the Renaultsport world of award-winning road and race cars. You'll also find a lively Community section where you'll find owners exchanging advice and sharing their passion for their cars. You can sign up for a monthly e-newsletter where you'll be the first to receive news on Renaultsport.

There are regular owner meetings and visits to the factory and don't miss out on the World Series by Renault. Offering free admission for everyone, adrenalin-pumping motorsport action, demonstration runs in the Renault F1 car to fun and games for the kids, it's a fabulous day out for all the family.

For further information on all our activities and to receive the monthly Renaultsport e-newsletter, go to www.renaultsport.co.uk.



OUR KNOWLEDGE FROM FORMULA 1 TO ROAD CARS



Renowned for its thrilling wheel-to-wheel racing, the AirAsia Renaultsport Clio Cup Championship is the UK's premier one-make saloon-car championship. Using cars based on the road-going Clio Renaultsport 200, the Championship remains the most direct link to the nation's most prestigious saloon car race, the British Touring Car Championship (BTCC). Almost one third of the current BTCC grid graduated from the ranks of Renault Clio Cup. Not only do Renaultsport Championships follow the BTCC package to each of the best circuits in the UK, but this also translates to a national roadshow visiting seven different counties across England from early April until mid October - Brands Hatch, Rockingham, Silverstone, Snetterton, Oulton Park Island, Thruxton and Donington Park National.



Renault's commitment to F1 since 1977 has been rewarded many times including 9 Driver's World Champion titles and 10 Manufacturer World Champion titles.

2011 was again an outstanding year; the Renaultsport F1 team was awarded a double World Champion title, 12 victories and 18 pole positions. In 2012, again Renault provides engines for four F1 teams, among them the winning Red Bull team led by Sebastian Vettel. Renaultsport F1's success stems from Renault's ability to develop innovating, powerful and reliable engines.



Renault Sport Technologies intensified its presence in UK rallying by creating a Trophy for Twingo in R1 and R2 categories. The Twingo Renaultsport R1 and R2 Trophies UK are one-make championships, new to the British Rally Championship in 2012. Based on similar successful series in France, Italy, Switzerland, Poland and Spain, the UK series is the first to include gravel events in its calendar.

WHO BETTER THAN RENAULT TO SERVICE YOUR RENAULT?



The 4+ package comes as standard with every purchase of a Renault car, van or Z.E. vehicle.*

4 - Warranty

Your vehicle is covered by a warranty package for up to 48 months. The first 2 years are unlimited mileage, followed by a further 2 years up to 100,000 miles. Your Dealer is able to repair or replace, without charge, parts that are found to have a material or assembly defect that is recognised by Renault.

4 - Roadside Cover

Any problems and we'll provide emergency roadside repairs or tow you to the nearest Renault dealer. This service is provided in partnership with the Automobile Association (AA) and is available 24 hours a day, every day of the year. We'll provide home start and roadside for 48 months, with additional recovery, onward travel and European assistance for the first three years.

4 - Servicing

Your vehicle is covered for free servicing during your first four years of ownership, or your first 48,000 miles (80,000 miles for vans), whichever comes first. That covers everything required in the manufacturer's minimum maintenance programme including parts, labour and VAT, but excluding normal wear-and-tear items, such as brake pads, windscreen wipers or tyres.

4 - Finance Package

The 4+ package is available with or without a finance package, it's your choice. Simplify your cash flow with fixed monthly payments with Renault Selections* or Hire Purchase finance packages. (* Cars only). Cash offers also available.

SERVICE INTERVALS

Service required at the mileage or time interval shown, whichever is sooner.

18,000 miles / 1 year:

- Twingo 1.2 16v 75
- Mégane all engines except Renaultsport 265
- Scénic all engines
- Fluence Z.E.
- Twizy

18,000 miles / 2 years:

- Clio all engines except 1.2 Tce 100 & Renaultsport 200

12,500 miles / 2 years:

- Mégane Renaultsport 265
- Twingo Renaultsport 133

12,000 miles / 2 years:

- Clio 1.2 Tce 100 & Renaultsport 200

25,000 miles / 2 years:

- Traffic all engines
- Master all engines

ENGINES WITH OIL CONTROL SYSTEM (OCS)

- PETROL 1.2 Tce 100 & 115, Renaultsport 133 & 265
- All DIESEL engines

OCS monitors driving conditions that directly affect the quality of your engine oil, protecting your engine from excessive wear and possible bearing failure. Under certain conditions; low speeds, heavy traffic, door-to-door deliveries (engine turning with little distance travelled) or in high gear for long periods; sport driving, towing a caravan/trailer over 500kg (engine turning at higher revolutions), the vehicle's service interval may be shortened and you will be alerted, via the instrument panel service indicator, that a Renault Service is required earlier (refer to Driver's Handbook for details).

RENAULT ACCIDENT SUPPORT LINE - 0800 085 8005

The Renault Accident Support Line (RASL) is a dedicated service from Renault for all Renault drivers and their families, no matter what car they drive. This service is available at no cost to you, regardless of fault. RASL will deal with every aspect of your claim, from ensuring you are recovered to a Renault Approved Accident Repair Centre to dealing with all insurance companies giving you total convenience and peace of mind. 0800 085 8005 is the only number you need so please programme it into your phone and make sure that in the event of an accident you call us first and we will take care of everything.

RASL will:

- Collect your car from the scene of an accident if unroadworthy
- Provide a like for like replacement car or courtesy car
- Repair your car using only Renault Approved Accident Repair Centres
- Provide a 5 year repair guarantee
- Use only Renault Original Parts
- Ensure you do not have to pay a policy excess if the accident is not your fault

Or for more information on the Renault Accident Support Line Service just visit www.renault.co.uk/rasl

RENAULT INSURANCE

A car as well designed as your Renault deserves an insurance policy to match. Renault Insurance has been specifically created to provide superb protection for you and your car. In addition to a very competitive premium, Renault Insurance also includes: Renault Genuine parts fitted in Renault Accident Repair Centres, protecting your 12 year anti-corrosion warranty; repairs guaranteed for 3 years; a courtesy car for the duration of any repairs - subject to availability when you use an approved repairer; payment by instalments - subject to status.

Renault Car Insurance:

0845 603 8256

www.renaultinsurance.co.uk

Renault Van Insurance:

0845 603 8258

www.renaultvaninsurance.co.uk

Renault Z.E. Insurance:

0800 500 3108

www.renault-ze.com

Lines open 8am - 8pm weekdays, 9am - 5pm Saturdays and 10am - 3pm Sundays. Calls may be recorded. All quotes are based on individual circumstance and subject to insurers underwriting criteria. Renault Insurance is arranged and administered by Equity Direct Broking Limited, which is authorised and regulated by the Financial Services Authority. Registered Office: Library House, New Road, Brentwood, Essex, CM14 4GD. Registered in England & Wales No. 6710272

CUSTOMER RELATIONS

Renault knows the value of communicating with its customers and we have established effective ways to keep in touch with you. If after speaking to your local Renault dealership you are not completely satisfied, please contact the Renault UK Customer Relations Department on 08000 72 33 72 (Mon-Fri 9.00am to 5.30pm, except Weds 10.00am to 5.30pm. Closed on Bank Holidays).

You can also visit our website www.renault.co.uk

Or write to us at: **Renault UK Ltd, The Rivers Office Park, Denham Way, Maple Cross, Rickmansworth, Hertfordshire, WD3 9YS.**

Find out more about your vehicle at www.e-guide.renault.com

RENAULT NETWORK SERVICES

No-one is better placed than Renault to maintain, fit and repair your Renault, fast. The Renault Minute (maintenance and repair with no appointment necessary) and Renault Rapide Bodycare (bumper scuffs, dings and dents, windscreen, stone chips and interior repairs...) services deliver the highest level of repair and maintenance and offer a full year's guarantee on Original Renault Parts. And don't forget to have a look at our wide range of additional equipment and accessories!

* Vehicles are covered by a warranty package for up to 48 months. The first 2 years are unlimited mileage, followed by a further 2 years up to 100,000 miles. Please see the warranty terms and conditions (www.renault.co.uk/warranty) for further details. Servicing offer covers cars for 4 years or 48,000 miles, whichever comes first. Services must be carried out in line with the manufacturer's minimum maintenance programme requirements and servicing intervals, and can only be carried out at a Renault Approved outlet. Renault Assistance Roadside Cover is provided in association with the AA. Cover from month 0 to 36 includes assistance at the roadside and home, national recovery, onward travel and European cover. Cover from month 37 to 48 includes Roadside and Homestart (including a local tow to an authorised Renault dealer). The provider of this cover is the Automobile Association Limited. For Finance, guarantees and indemnities may be required. You must be at least 18 and a UK resident (excluding the Isle of Man and Channel Islands) to apply. Finance provided by RCI Financial Services Limited, PO Box 149, Watford WD17 1FJ. Available at participating dealers only. Not available in conjunction with any other schemes or finance offers, please check with your local dealer for information. Offers are available to retail and business customers (but exclude fleet customers with own terms), and are valid on new vehicles, at point of new vehicle registration, when ordered from 1st February 2012 until further notice. Visit www.renault.co.uk/4plus

CUSTOMER RELATIONS

Renault knows the value of communicating with its customers and we have established effective ways to keep in touch with you. If after speaking to your local Renault dealership you are not completely satisfied, please contact the Renault UK Customer Relations Department on **08000 72 33 72** (Mon-Fri 9.00am to 5.30pm, except Weds 10.00am to 5.30pm. Closed on Bank Holidays).

You can also visit our website www.renault.co.uk Or write to us at: **Renault UK Ltd, The Rivers Office Park, Denham Way, Maple Cross, Rickmansworth, Hertfordshire, WD3 9YS.**

