



Das Auto.

The Jetta





**TAKES EVERY CHALLENGE
IN ITS STRIDE.**

4 DESIGN

- 8 Exterior
- 10 Wheels

12 INTERIOR

- 14 Space
- 16 Equipment

22 COMFORT

- 24 Multimedia
- 26 Air conditioning
- 28 Function
- 30 Equipment packs

32 SAFETY

- 34 Protection

36 ENGINES

- 38 Engines and gearboxes
- 40 BlueMotion Technologies

44 MY JETTA

- 46 Paint, upholstery and combinations
- 50 Technical specification
- 53 Technology

**VOLKSWAGEN
SERVICE**

54

**THE JETTA.
LET THE JOURNEY BEGIN.**



Model shown is Jetta Sport with optional 17" 'Porto' alloy wheels, 'Vienna' leather upholstery and metallic paint.



**FIRST THING IN
THE MORNING.
A SIGHT TO BEHOLD.**

Model shown is Jetta Sport with optional metallic paint.

GOOD DESIGN REFLECTS FUNCTIONALITY AND BEAUTY. AS THE JETTA CLEARLY DEMONSTRATES.

Halogen clear headlights, range adjustable with daytime running lights, offer optimum illumination giving you better visibility in poor weather, ensuring your vehicle can be seen more clearly during the day and adding a stylish detail to the exterior.

Standard | **S** | **SE** | **SP**



Two-piece rear lights with integrated indicators enhance the rear styling, adding contemporary style to the Jetta's distinctive identity.

Standard | **S** | **SE** | **SP**



Electrically heated and adjustable body-coloured door mirrors with integrated indicators incorporating LED technology blend perfectly with the sculpted bodylines, enhancing the overall design.

Standard | **S** | **SE** | **SP**



The **electric slide/tilt glass sunroof** provides an extra dimension of light and space, filling the interior with natural light. Easily operated at the touch of a button, the tilted position enables you to enjoy light and fresh air whatever the weather conditions, while the tinted glass offers protection against strong sunlight, ensuring a pleasant interior temperature.

Optional | **S** | **SE** | **SP**

Includes tyre mobility kit in lieu of full size steel spare wheel on BlueMotion Technology models.



Heat insulating tinted glass from the B pillar backwards reduces sunlight by up to 65%, helping to ensure a pleasant temperature in the passenger compartment and also providing additional privacy.

Standard | **SP**

Optional | **S** | **SE**



The **radiator grille surround in black finish with chrome trimmed louvres** adds elegance and style, while the Volkswagen roundel proudly completes the look.

Standard | **S** | **SE** | **SP**





WHEELS DESIGN

6½J x 16 steel wheels with full size wheel trims are eye-catching and stylish, with 205/55 R16 tyres. BlueMotion Technology models are fitted with 205/55 R16 low rolling resistance tyres.

Standard | **S**

'Navarra' 6½J x 16 alloy wheels are visually stunning, with 205/55 R16 tyres and anti-theft wheel bolts. BlueMotion Technology models are fitted with 205/55 R16 with low rolling resistance tyres.

Standard | **SE**

Optional | **S**

'Atlanta' 6½J x 16 alloy wheels are elegant and contemporary, with 205/55 R16 low rolling resistance tyres and anti-theft wheel bolts.

Standard | **SP**

Standard on Sport BlueMotion Technology models only.

'Queensland' 7J x 17 alloy wheels are sophisticated and distinctive, with 225/45 R17 tyres and anti-theft wheel bolts.

Standard | **SP**

Optional | **SE**

Not available on BlueMotion Technology models. SE models include lowered sports suspension and temporary steel space saver spare wheel in lieu of full size steel spare wheel.



'Perth' 6J x 16 alloy wheels give a sporty look, with 205/55 R16 tyres and anti-theft wheel bolts. BlueMotion Technology models are fitted with 205/55 R16 low rolling resistance tyres.

Optional | **S** | **SE**



'Porto' 7J x 17 alloy wheels provide secure handling and roadholding, with 225/45 R17 tyres and anti-theft wheel bolts.

Optional | **SE** | **SP**

Not available on BlueMotion Technology models. SE models include lowered sports suspension and temporary steel space saver spare wheel in lieu of full size steel spare wheel.



**TRAVEL IN STYLE,
COMFORT AND SPACE.**

Model shown is Jetta Sport BlueMotion Technology with optional metallic paint.

INTERIOR SPACE

THE PEAK OF SPACIOUSNESS, COMFORT AND STYLE.

When the rear centre armrest is folded down, it provides a useful **load-through provision**, enabling you to transport bulky objects, such as skis or snowboards, with the greatest of ease. The rear centre armrest also features two cup holders which are a handy addition on long journeys.

Standard | **SE** | **SP**

Interior shown features optional 'Vienna' leather upholstery. Some parts of leather interior will contain artificial leather.



The **front centre armrest** with spacious storage compartment allows you to keep your essentials close to hand and within easy reach, while the cover keeps items out of sight of prying eyes.

Standard | **SE** | **SP**

Optional | **S**

Interior shown features optional 'Vienna' leather upholstery. Some parts of leather interior will contain artificial leather.

With the rear seat upright, the **redesigned boot** has a load volume of 510 litres* and provides plenty of space for all your luggage and more, increasing flexibility and convenience.

Standard | **S** | **SE** | **SP**

* Maximum luggage capacity, litres VDA measuring method using 200 x 100 x 50 mm blocks.

The rear passenger compartment offers an impressive level of spaciousness, as well as high levels of comfort. With the **rear seat backrest split folding 60:40** to provide additional luggage space, you can carry a combination of both passengers and bulky luggage at the same time.

Standard | **SE** | **SP**



Interior shown is Jetta Sport with optional 'Vienna' leather upholstery.

INTERIOR EQUIPMENT

THREE DIFFERENT TRIM LEVELS, OFFERING SOPHISTICATION, LUXURY AND COMFORT.

JETTA S AND S BLUEMOTION TECHNOLOGY.

The Jetta S offers a unique design, impressive quality and superb value for money, with an extensive list of equipment all fitted as standard. The stylish exterior is equipped with range adjustable halogen clear headlights and daytime running lights, body-coloured bumpers, door handles and door mirrors with integrated indicators incorporating LED technology and a black radiator grille surround and chrome trimmed louvres to complete the look. Inside, such features as a stylish 'Climatic' semi-automatic air conditioning system, an RCD 210 radio/MP3 compatible CD player with four front speakers, multifunction computer (Midline), electric front and rear windows, and electrically heated and adjustable door mirrors all ensure the highest levels of comfort and convenience. Durable 'Cardeol' cloth upholstery is both stylish and hard-wearing. Further comfort is assured with speed-sensitive power assisted steering, a steering wheel with height and reach adjustable steering column, and driver's and front passenger's seat height adjustment.

Safety in the Jetta is paramount and this is highlighted with the inclusion, as standard, of driver's and front passenger's airbags with a front passenger's airbag deactivation switch, curtain airbags, front seat side impact airbags and whiplash-optimised front head restraints. The ESP (Electronic Stabilisation Programme) provides optimum traction and cornering stability, while an electronic engine immobiliser and alarm with interior protection completes the safety specification.



The **'Climatic' semi-automatic air conditioning** system is extremely user-friendly, providing your required cabin temperature quickly and efficiently, while maintaining your selected temperature.

The **Jetta S BlueMotion Technology** utilises energy efficient TDI engines allied with an automatic Start/Stop function and battery regeneration (recuperation – energy recovery during braking), this means you can enjoy cleaner, economical, greener driving with a clearer conscience.





Interior shown is Jetta SE.

JETTA SE AND SE BLUEMOTION TECHNOLOGY.



Elegant and stylish, the exterior of the Jetta SE is enhanced by distinctive 16 inch 'Navarra' alloy wheels, while inside, subtle trim elements and 'Sienna' cloth upholstery combine elegance and flair with comfort and luxury. Front comfort seats provide height and lumbar adjustment, and there is also a front centre armrest with storage compartment, two rear air vents and cup holders, leather trimmed three-spoke multifunction steering wheel, gear knob and handbrake grip, multifunction computer (Highline) and rear centre armrest with two cup holders, ensuring total comfort for both the driver and passengers.



A load-through provision and 60:40 split folding rear seat backrest enable you to transport long items, such as skis or snowboards, and you'll also find a useful storage compartment in the roof console for sunglasses and front seat back storage pockets. Bluetooth telephone preparation for HFP (Hands Free Profile) enabled telephones allow you to make and receive phone calls via the multifunction steering wheel or the RCD 310 radio/MP3 compatible CD player. The radio system includes eight speakers to enhance your all round in-car entertainment, along with an AUX-in socket and Multi Device Interface (MDI) providing USB and iPod connectivity. Finally, cruise control ensures you arrive at your destination feeling calm and relaxed.

Opting for BlueMotion Technology on the Jetta SE helps improve fuel consumption and CO₂ emissions, with the 1.6 litre TDI 105 PS manual engine achieving up to 67.3 mpg over the Combined fuel cycle* with CO₂ emissions* at an impressively low 109 g/km.

Phones must be Bluetooth HFP (Hands Free Profile) compatible, please contact your Volkswagen retailer for specific phone compatibility.
* Please see pages 50-51 for fuel consumption and CO₂ emissions figures.

A rear centre armrest with **load-through provision** provides an easy and convenient method of transporting bulky items. Interior shown features optional 'Vienna' leather† upholstery.

The **RCD 310 radio/MP3 compatible CD player** provides excellent acoustics via eight speakers with an output of 4 x 20 watts. It also features an AUX-in socket for connection to an external multimedia source, such as iPod or MP3 player.

† Some parts of leather interior will contain artificial leather.



JETTA SPORT AND SPORT BLUEMOTION TECHNOLOGY.

An exceptional level of driving comfort combined with impressive power and agility ensures the Jetta Sport and Sport BlueMotion Technology deliver pure driving fun, whichever engine you choose. It looks particularly sporty with 17 inch 'Queensland' alloy wheels* complete with 225/45 R17 tyres and sports suspension which is lowered by approximately 15 mm on Sport models, or 16 inch 'Atlanta' alloy wheels with low rolling resistance tyres standard on Sport BlueMotion Technology models. For added safety in poor driving conditions, the front fog lights with static cornering function mounted within the front bumper illuminate the road ahead making your journey just that little bit easier. The rain sensor will automatically activate the windscreen wipers if it detects moisture, while the automatic dimming interior rear-view mirror will ensure you are not distracted if a following car's headlights are too high.

Building over the impressively equipped Jetta SE, both Jetta Sport models are upholstered in vibrant 'Gloss' seat centre sections with 'Microfibre' side bolsters ensuring pure luxury, enhanced by 'Iridium' decorative inserts in the dash and centre console and front and rear carpet mats. Front sport seats with height and lumbar adjustment are fitted as standard, ensuring optimum lateral support at all times, especially important when cornering.

* Temporary steel spare wheel in conjunction with 17 inch 'Queensland' alloy wheels.



16 inch 'Atlanta' alloy wheels complete with 205/55 R16 low rolling resistance tyres, are an integral part of helping to reduce fuel consumption on Sport BlueMotion Technology models.

17 inch 'Queensland' alloy wheels, with sports suspension lowered by approximately 15 mm, help give a sporty and dynamic presence to the exterior of the Jetta Sport.

Heat insulating rear tinted windows from B pillar back are 65% light absorbing and help reduce exposure to the sun's rays whilst giving your Jetta a sporty look.



Interior shown is Jetta Sport DSG with optional 'Vienna' leather upholstery and metallic paint.



**SO COMFORTABLE,
YOU WON'T WANT TO STOP.
EVEN TO ADMIRE THE VIEW.**

Model shown is Jetta Sport with optional 17" 'Porto' alloy wheels, 'Vienna' leather upholstery and metallic paint.

SCALING THE HEIGHTS OF AUDIO ENJOYMENT AND APPRECIATION.

The **RNS 510 touch-screen navigation/DVD radio system with integrated voice control** features a 30 GB hard drive with preloaded navigation data, DVD drive, 6½ inch colour display showing clear navigational directions, an SD card reader and full compatibility with MP3 and WMA files. The AUX-in socket and Multi Device Interface (MDI) enables you to connect to an external multimedia source, such as an iPod or MP3 player.

Optional | **SE** | **SP**

DAB digital radio receiver, RNS 310 and RNS 510 navigation/DVD radio system cannot be specified in conjunction with each other. Please note, DVD playback on the RNS 510 will not function whilst the navigation system is in use, or the vehicle is in motion.

The **Multi Device Interface (MDI)** with USB and iPod cables enables you to connect and charge a compatible device, while track selection is viewed and selected via the vehicle's radio system.

Standard | **SE** | **SP**

Optional | **S**

Please note, on all S models this must be ordered in conjunction with RCD 310 or RCD 510 radio systems, and RNS 310 or RNS 510 navigation/DVD radio systems.



The **RCD 310 radio/MP3 compatible CD player** features eight speakers with an output of 4 x 20 watts. It also features an AUX-in socket for connection to an external multimedia source such as iPod or MP3 player.

Standard | **SE** | **SP**

Optional | **S**

Also available as an upgrade to your RCD 310 and RCD 510 is a **DAB digital radio receiver**, allowing you to listen to all digital stations available in crystal clear sound.

Optional | **S** | **SE** | **SP**

The **RNS 310 touch-screen navigation/radio system** features a 5 inch colour display for clear map navigation to help guide you to your destination. The MP3 compatible CD player will play music CDs even when the navigation system is being used, while music can also be played via the SD card slot.

Optional | **S** | **SE** | **SP**



RCD 310 radio system, RCD 510 radio system, RNS 310 navigation/radio system and RNS 510 navigation/DVD radio system cannot be specified in conjunction with each other.

The **RCD 510 touch-screen radio/dash-mounted MP3 compatible six CD autochanger** features a large 6½ inch colour display, with intuitive menu navigation and touch-screen operation. It also features an AUX-in socket for connection to an external multimedia source such as iPod or MP3 player and an SD card slot.

Optional | **S** | **SE** | **SP**

Image shown features optional DAB digital radio receiver.

Bluetooth telephone preparation for HFP (Hands Free Profile) enabled telephones allows you to use your phone safely and easily whilst driving.

Standard | **SE** | **SP**

Optional | **S**

On S models, optional Bluetooth telephone preparation includes a multifunction computer (Highline), leather trimmed multifunction steering wheel, gear knob and handbrake grip.

Phones must be Bluetooth HFP (Hands Free Profile) compatible, please contact your Volkswagen retailer for specific phone compatibility. Image shown features optional RCD 510 touch-screen radio system.

COMFORT AIR CONDITIONING

WHATEVER THE WEATHER OUTSIDE,
2ZONE ELECTRONIC CLIMATE CONTROL WILL
ENSURE A PLEASANT TEMPERATURE WITHIN.



Heated front seats are included in the **Winter pack**, along with headlight washers, heated windscreen washer jets and low washer fluid warning light, which greatly increase comfort levels especially on cold winter days, providing heat faster than the vehicle's heating system.

Optional | **S** | **SE** | **SP**



2Zone electronic climate control with automatic air recirculation, controls the temperature electronically and divides the interior into two different climate zones, enabling the driver and front passenger to adjust the temperature, air supply and distribution to suit their individual preference.

Optional | **S** | **SE** | **SP**

Image shown features optional RNS 510 navigation/DVD radio system.

S model | **S** SE model | **SE** Sport model | **SP**

EXHILARATING, DRAMATIC, UNFORGETTABLE. EXPERIENCE THE ULTIMATE IN THE JETTA.

COMFORT FUNCTION

A WEALTH OF FEATURES MAKES SHORT WORK OF LONG JOURNEYS, ENSURING YOUR TOTAL COMFORT, CONVENIENCE AND RELAXATION.

White instrument lighting and red needles create a distinctive visual appearance, while the multifunction computer provides important information as you travel, such as average and current fuel consumption, range in tank and exterior temperature.

Standard | **S** | **SE** | **SP**



The **cruise control** system works electronically to help regulate your car's speed. It reduces the stress on drivers and offers you more comfort on long journeys by keeping a constant speed.

Standard | **SE** | **SP**



The **leather trimmed multifunction steering wheel** is fitted with ergonomically designed switches, making it easy to use the Bluetooth telephone preparation, radio, in-car entertainment system and multifunction computer (Highline). Thanks to the height and reach adjustment of the steering column, the position of the steering wheel can also be set to your exact preferred driving position.

Standard | **SE** | **SP**

Optional | **S**

Phones must be Bluetooth HFP (Hands Free Profile) compatible, please contact your Volkswagen retailer for specific phone compatibility.

LATEST TECHNOLOGY FOR TOTAL CONVENIENCE.



The **Convenience pack** comprises an **automatically dimming interior rear-view mirror** which darkens when a following car's headlights are too high, and rain sensor, which automatically activates and controls the windscreen wipers when it detects moisture on the windscreen. **Electrically foldable door mirrors**, daytime running lights with low beam assist, automatic headlights on with coming/leaving home function and door mirror puddle lights all add to a more relaxed driving environment.

Optional | **S** | **SE** | **SP**

MAKE YOUR JETTA AS INDIVIDUAL AS YOU WISH.
HIGH LEVEL TECHNOLOGY TO MEET YOUR EXACT NEEDS.



The **headlight washer system** forms part of the **Winter pack**, along with **heated front seats**, heated windscreen washer jets and low washer fluid warning light. This clever system will ensure that your headlights are kept clean of dirt and grime.

Optional | **S** | **SE** | **SP**

S model | **S** SE model | **SE** Sport model | **SP**



The **Sports pack** includes front fog lights, **heat insulating tinted glass** from the B pillar backwards, flat tyre indicator and sports suspension lowered by approximately 15 mm.

Optional | **SE**

Not available on BlueMotion Technology models.



Building upon the impressive equipment of the Sports pack, you can also include either **17 inch 'Queensland'** or **17 inch 'Porto'** alloy wheels to further enhance the appearance of your Jetta even further.

Optional | **SE**

Includes temporary steel space saver spare wheel in lieu of full size steel spare wheel.
Not available on BlueMotion Technology models.

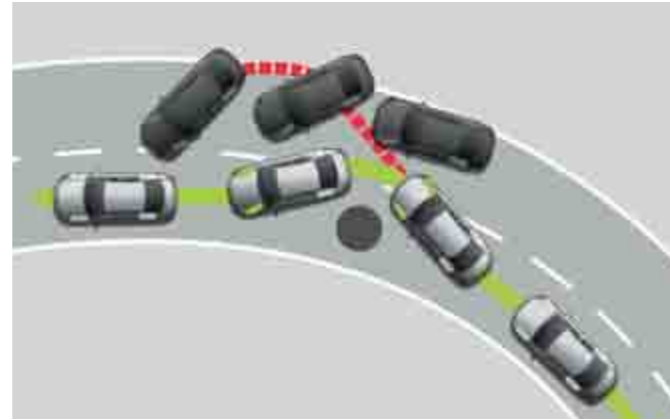
THE JETTA. THE PEAK OF CONTEMPORARY STYLING AND AESTHETIC DESIGN.



**SAFETY IS FUNDAMENTAL IN THE JETTA.
DRIVE IN CONFIDENCE KNOWING YOU'RE TOTALLY PROTECTED.**



Image shown is for illustration purposes only and may not necessarily reflect UK specification.



The **ESP (Electronic Stabilisation Programme)** recognises critical driving situations and reacts in milliseconds by targeting brake and management systems, controlling the speed of individual wheels and helping to bring the vehicle under control. As a result, the vehicle achieves maximum directional stability. A careful driving style is still essential, however, as even the Electronic Stabilisation Programme cannot defy the law of physics.

Standard | **S** | **SE** | **SP**

The **comprehensive airbag system** includes curtain airbags for front and rear passengers, front seat side impact airbags, and driver's and front passenger's airbags with passenger's airbag deactivation switch. When an impact is registered, the airbag control unit ignites the gas generator, which then inflates the airbags in less than 40 milliseconds, helping to significantly reduce the risk of injury for occupants.

Standard | **S** | **SE** | **SP**

Also available as an option is a **side airbag system, for rear seat passengers** should you require it.

Optional | **S** | **SE** | **SP**



The **driver's and front passenger's whiplash-optimised head restraints** not only ensure additional comfort, but also provide particularly effective support for the head and spine in the event of a collision.

Active safety features, such as the **brake pad wear indicator** informs the driver via the instrument cluster, when the brake pads need replacing.

Standard | **S** | **SE** | **SP**



The optional **Parking sensor pack** comprise front and rear parking sensors and reverse activated kerb-view adjustment on the passenger's door mirror. The parking sensors assist in parking manoeuvres by emitting ultrasonic, audible and visual signals, alerting the driver to any obstacles in the way: the closer you are to an obstacle the faster the sound frequency. In addition, an optical parking display extends the functions of the parking sensors by indicating your position, either in monochrome on RCD 310 radio system or colour on the optional RCD 510 radio system and RNS 310 or RNS 510 navigation systems, on the vehicle's audio display during parking.

Optional | **S** | **SE** | **SP**

The optical parking display feature will not function with RCD 210 radio system. Image shown features RCD 310 radio system.



**HANDLES THE LONG AND
WINDING ROAD WITH AGILITY
AND POWER.**



POWERFUL TSI AND TDI ENGINES HANDLE LONG OR SHORT JOURNEYS WITH EASE, CONSISTENTLY DELIVERING HIGH PERFORMANCE AND LOW CONSUMPTION.

The Jetta has a range of powerful and efficient engines at its disposal with two petrol **TSI engines**, the 1.4 litre 122 PS or 1.4 litre 160 PS, both benefiting from innovative direct injection technology. TSI is the name given to Volkswagen's twincharged or singlecharged petrol engines with direct petrol injection. The basic features common to all TSI engines are the downsizing concept, direct injection and turbocharging. This innovative engineering results in high tech engines with excellent torque and power output combined with low fuel consumption. Incorporated into the TSI engines is FSI technology, whereby fuel is injected directly into the combustion chamber under high pressure. The benefit of this method – is that it only burns the exact amount of fuel required helping to reduce fuel consumption and boost performance even at low revs.

The **TDI engines** available for the Jetta eliminate any compromises – you can have performance as well as exceptional economy. These diesel engines all benefit from the latest common rail technology, resulting in exceptional pulling power throughout the rev range alongside low fuel consumption. This technology not only ensures excellent performance and fuel consumption but also makes it incredibly quiet. When utilised with BlueMotion Technologies such as the Start/Stop function and battery regeneration – both fuel consumption and CO₂ emissions are further reduced dramatically.

The first diesel engine available for the Jetta, is a 1.6 litre TDI 105 PS BlueMotion Technology with a five speed manual or seven speed auto DSG gearbox. The manual engine achieves an exceptional 67.3 mpg on the Combined fuel cycle*. For a more sporty option, the 2.0 litre TDI generating 140 PS with either a six speed manual or six speed auto DSG gearbox is available. The manual engine boasts impressive economy achieving 58.9 mpg on the Combined fuel cycle* and a CO₂ emission figure* of 126 g/km, yet can accelerate the Jetta to 62 mph in an impressive 9.5 seconds.

* Please see pages 50-51 for fuel consumption and CO₂ emissions figures.





**WITH MILES AND MILES TO
THE NEXT PETROL STATION,
THANK GOODNESS FOR
ENERGY-EFFICIENT ENGINES
THAT MAKE YOUR FUEL
GO FURTHER.**

For example, the 1.6 litre TDI 105 PS BlueMotion Technology engine uses an average of 67.3 miles per gallon, based on the Combined fuel cycle. For full details about fuel consumption and CO₂ emissions see pages 50-51.

Model shown is Jetta Sport BlueMotion Technology with optional metallic paint.

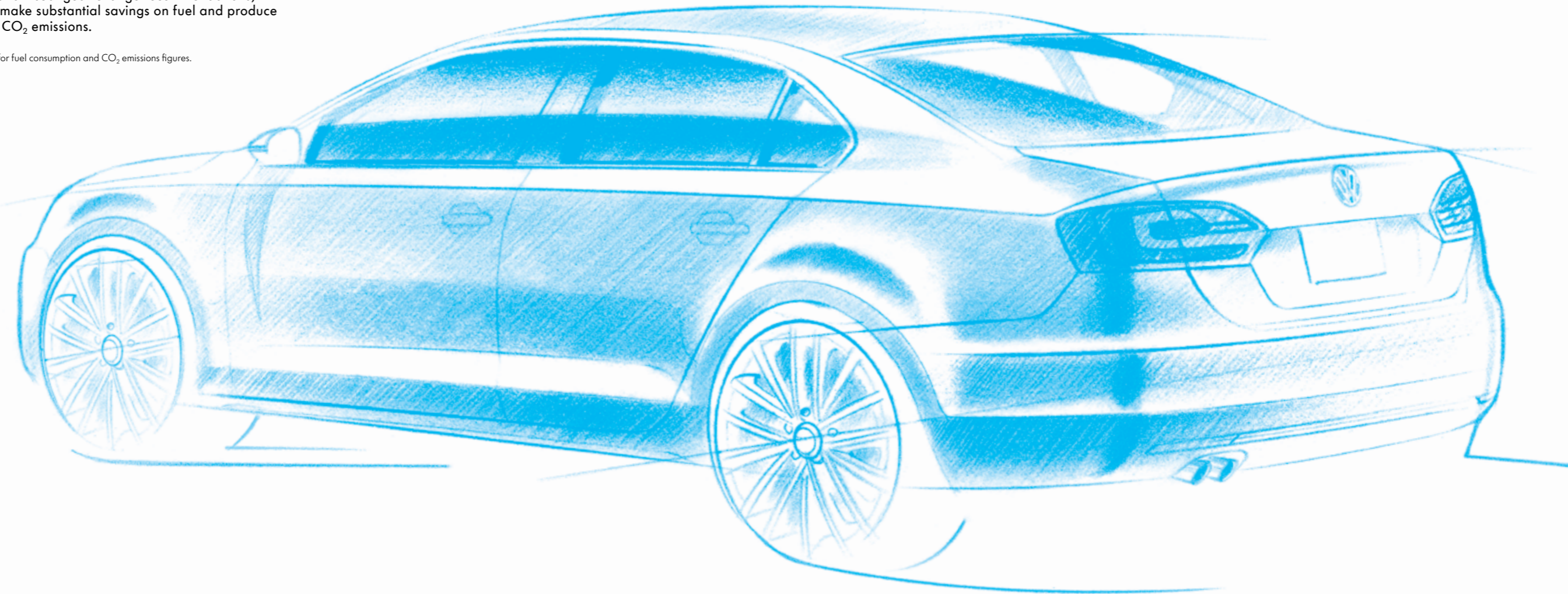
Think Blue.

BlueMotion Technologies represents our contribution to sustainable motoring, ensuring we offer optimum solutions for every demand, all designed to make driving as fuel efficient as possible. Economical consumption along with lower emission petrol and diesel engines and BlueMotion Technologies combine to ensure your Jetta is kind to the environment and your wallet, without sacrificing comfort and every-day practicalities.

Externally, Volkswagen's 'BlueMotion Technology' badging identifies the cleanest, most energy-efficient diesel cars in our range. So when you see these badges you'll know we're talking about ways to cut emissions and the cost of your motoring. Environmental technologies of today are meeting the driving challenges of tomorrow with one very important aim: to reduce the impact of our cars on the environment for future generations.

The Jetta not only offers exceptional space and the highest levels of luxury and comfort, but also economical fuel consumption and low emissions. A range of advanced engines and gearbox technology, including TDI and DSG, make this possible, forming the basis for sustainable BlueMotion Technologies. Together with innovations such as the Start/Stop function, battery regeneration (recuperation – energy recovery during braking), low rolling resistance tyres and visual gear change recommendations, they ensure you make substantial savings on fuel and produce significantly less CO₂ emissions.

Please see pages 50-51 for fuel consumption and CO₂ emissions figures.



The '**BlueMotion Technology**' badge at the rear identifies your car as being one of the most energy-efficient cars in the Volkswagen range, equipped with technologies designed to protect the environment, as well as your wallet.



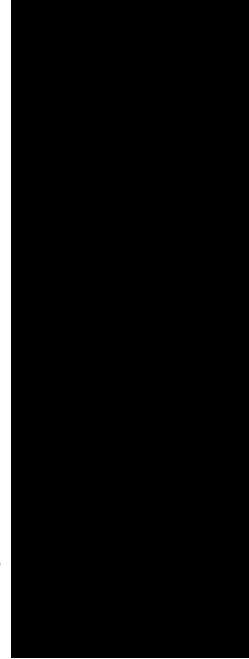
The **Start/Stop function** turns off the engine when the vehicle is stationary, in neutral and the clutch disengaged, and this is notified via a symbol on the multifunction computer display. This occurs when the engine is idle, such as at traffic lights, then restarts when you put the vehicle back in gear, thereby saving fuel.

**MY JETTA.
A BREATH OF FRESH AIR.**

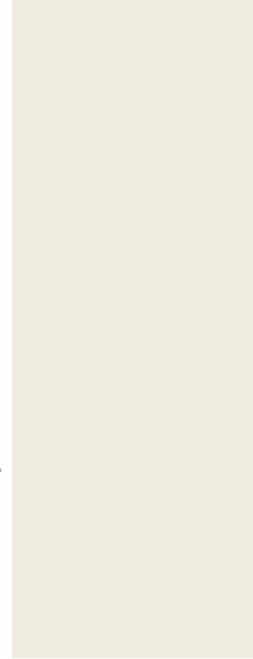


Model shown is Jetta Sport with optional 17" 'Porto' alloy wheels and metallic paint.

BLACK | A1 | Non-Metallic



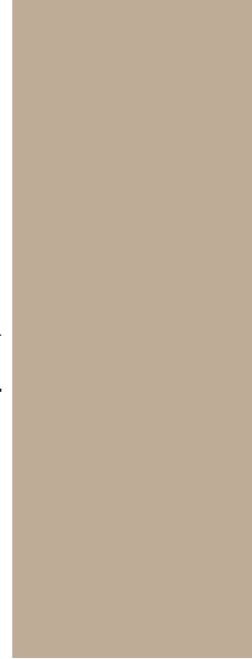
CANDY WHITE | B4 | Non-Metallic



TORNADO RED | G2 | Non-Metallic



MOON ROCK SILVER | 0B | Metallic*



FROST SILVER | 0V | Metallic*



PAINT

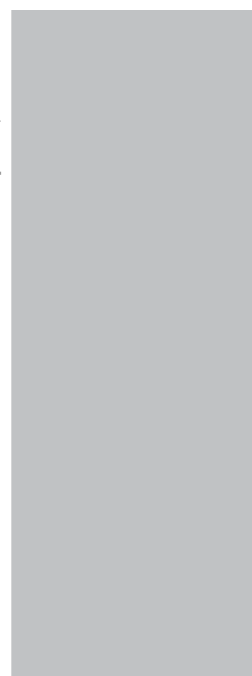
PLATINUM GREY | 2R | Metallic*



JAVA | 4Q | Metallic*



REFLEX SILVER | 8E | Metallic*



DEEP BLACK | 2T | Pearl Effect*



TEMPEST BLUE | CT | Metallic*

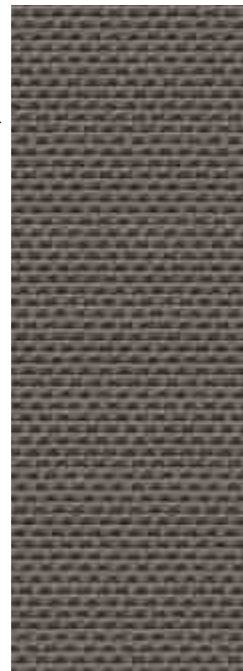


* Metallic and pearl effect paints are optional at extra cost. Please note: The print process does not allow for exact reproduction of the paint colours. For further details, please contact your Volkswagen retailer.

‘GLOSS’ SEAT CENTRE SECTION AND ‘MICROFIBRE’ SIDE BOLSTERS
| TITANIUM BLACK | JM
Cloth | Standard on all Sport models



‘GLOSS’ SEAT CENTRE SECTION AND ‘MICROFIBRE’ SIDE BOLSTERS
| LATTE | JN
Cloth | Standard on all Sport models



‘GLOSS’ SEAT CENTRE SECTION AND ‘MICROFIBRE’ SIDE BOLSTERS
| CORN SILK BEIGE | JP
Cloth | Standard on all Sport models



‘VIENNA’ | BLACK | TW*
Leather† | Optional on all SE and Sport models



‘VIENNA’ | CORN SILK BEIGE | YY*
Leather† | Optional on all SE and Sport models



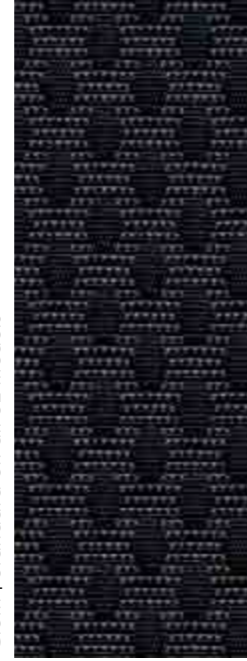
‘CARDEOL’ | TITANIUM BLACK | JM
Cloth | Standard on all S models



‘CARDEOL’ | LATTE | JN
Cloth | Standard on all S models



‘SIENNA’ | TITANIUM BLACK | JM
Cloth | Standard on all SE models



‘SIENNA’ | LATTE | JN
Cloth | Standard on all SE models



UPHOLSTERY

SEAT UPHOLSTERY	CARPET	DASHBOARD	BLACK A1 NON-METALLIC	CANDY WHITE B4 NON-METALLIC	TORNADO RED G2 NON-METALLIC	MOON ROCK SILVER 0B METALLIC*	FROST SILVER 0V METALLIC*	PLATINUM GREY 2R METALLIC*	JAVA 4Q METALLIC*	REFLEX SILVER 8E METALLIC*	TEMPEST BLUE C1 METALLIC*	DEEP BLACK 2T PEARL EFFECT*
‘CARDEOL’ Cloth Standard on all S models												
TITANIUM BLACK (JM)	BLACK	BLACK	●	●	●	●	●	●	●	●	●	●
LATTE (JN)	BLACK	BLACK	●	●	●	●	-	●	●	●	●	●
‘SIENNA’ Cloth Standard on all SE models												
TITANIUM BLACK (JM)	BLACK	BLACK	●	●	●	●	●	●	●	●	●	●
LATTE (JN)	BLACK	BLACK	●	●	●	●	-	●	●	●	●	●
‘GLOSS’ seat centre section and ‘MICROFIBRE’ side bolsters Cloth Standard on all Sport models												
TITANIUM BLACK (JM)	BLACK	BLACK	●	●	●	●	●	●	●	●	●	●
LATTE (JN)	BLACK	BLACK	●	●	●	●	-	●	●	●	●	●
CORN SILK BEIGE (JP)	BLACK	BLACK	●	●	●	●	●	●	●	●	●	●
‘VIENNA’ * Leather† Optional on all SE and Sport models												
BLACK (TW)	BLACK	BLACK	○	○	○	○	○	○	○	○	○	○
CORN SILK BEIGE (YY)	BLACK	BLACK	○	○	○	○	○	○	○	○	○	○

* Metallic and pearl effect paints, and leather upholstery are optional at extra cost.
† Some parts of leather interior will contain artificial leather.

● Standard ○ Optional at extra cost - Not available

Please note: The print process does not allow for exact reproduction of the upholstery colours.
For further details, please contact your Volkswagen retailer.

	S, SE 1.4 litre TSI 122 PS	SE, Sport 1.4 litre TSI 160 PS	S, SE, Sport 1.6 litre TDI 105 PS BlueMotion Technology	SE, Sport 2.0 litre TDI 140 PS
ENGINE				
Engine type	Four cylinder petrol	Four cylinder petrol	Four cylinder diesel	Four cylinder diesel
Cubic capacity, ltrs/cc	1.4/1390	1.4/1390	1.6/1598	2.0/1968
Max. output, PS ⁽⁰¹⁾ /kW at rpm	122/90 5000	160/118 5800	105/77 4400	140/103 4200
Max. torque, lbs.ft/Nm at rpm	148/200 4000	177/240 1500-4500	185/250 1500-2500	236/320 1750-2500
Gearbox	Six speed manual –	Six speed manual Seven speed auto DSG	Five speed manual Seven speed auto DSG	Six speed manual Six speed auto DSG
WEIGHTS, kgs				
Manual gearbox:				
Unladen weight ⁽⁰²⁾	1400	1411	1395	1411
Gross vehicle weight	1850	1910	1900	1940
Payload ⁽⁰²⁾	525	574	580	604
Axle load limit: Front	950	990	1000	1030
Rear	950	970	950	960
Automatic DSG gearbox:				
Unladen weight ⁽⁰²⁾	–	1417	1415	1441
Gross vehicle weight	–	1920	1920	1970
Payload ⁽⁰²⁾	–	578	580	604
Axle load limit: Front	–	1000	1020	1060
Rear	–	970	950	960
TRAILER LOAD LIMITS, kgs ⁽⁰³⁾				
Braked 12% incline:				
Manual gearbox	1300	1400	1400	1500
Automatic DSG gearbox	–	1400	1400	1500
Unbraked:				
Manual gearbox	670	680	690	700
Automatic DSG gearbox	–	690	700	720
Towbar load limit	75	75	75	75
Max. roof load	75	75	75	75

	S, SE 1.4 litre TSI 122 PS	SE, Sport 1.4 litre TSI 160 PS	S, SE, Sport 1.6 litre TDI 105 PS BlueMotion Technology	SE, Sport 2.0 litre TDI 140 PS
PERFORMANCE				
Top speed, mph (km/h), where the law permits				
Manual gearbox	125 (202)	137 (221)	118 (190)	130 (210)
Auto DSG gearbox	–	TBA	118 (190)	129 (208)
Acceleration, secs 0 - 62 mph				
Manual gearbox	9.8	8.3	11.7	9.5
Auto DSG gearbox	–	8.3	11.7	9.5
ABI insurance group, 1 - 50	10E	18E	12E	17E
ENVIRONMENTAL INFORMATION				
Fuel grade, minimum	Unleaded, 95 RON ⁽⁰⁴⁾	Unleaded, 95 RON ⁽⁰⁴⁾	Diesel ⁽⁰⁵⁾	Diesel ⁽⁰⁵⁾
Fuel tank capacity, galls/ltrs	15/68	15/68	15/68	15/68
Official fuel consumption, manual gearbox, mpg/ltr per 100 km ⁽⁰⁶⁾				
Urban	34.4/8.2	34.9/8.1	54.3/5.2	46.3/6.1
Extra-urban	55.4/5.1	54.3/5.2	78.5/3.6	68.9/4.1
Combined	45.6/6.2	44.8/6.3	67.3/4.2	58.9/4.8
Official fuel consumption, automatic DSG gearbox, mpg/ltr per 100 km ⁽⁰⁶⁾				
Urban	–	37.7/7.5	57.6/4.9	42.2/6.7
Extra-urban	–	54.3/5.2	70.6/4.0	62.8/4.5
Combined	–	47.1/6.0	65.7/4.3	53.3/5.3
Official CO ₂ emission, g/km				
Manual gearbox ⁽⁰⁷⁾	144	145	109	126
Automatic DSG gearbox ⁽⁰⁷⁾	–	139	113	138
Emission class	EURO 5	EURO 5	EURO 5	EURO 5
Noise, dB				
Manual gearbox	TBA	72.0	69.0	73.0
Automatic DSG gearbox	–	70.0	69.0	71.0

TECHNICAL SPECIFICATION NOTES

- (01) The maximum power output figures are quoted in PS (or Pferdestärke, which is the metric equivalent of horsepower). To convert from metric to imperial horsepower, divide the PS figure by 1.0139.
- (02) Figures are calculated in accordance with manufacturer's criteria. The individual unladen weight depends on the specification of the vehicle, this then reduces the possible payload accordingly. The unladen weight and payload both include the fuel tank 90% full, driver (68 kg) and luggage (7 kg) in line with EU directive 95/48.
- (03) With increasing altitude the engine performance diminishes. From 1,000 m above sea level and for every 1,000 m thereafter 10% of the vehicle/trailer weight (trailer weight + gross vehicle weight) must be deducted.
- (04) Thanks to the knock control, unleaded four star (at least 95 RON) can be used instead of unleaded Super plus. In order to achieve maximum fuel consumption benefits on the TSI engine, Ultra Low Sulphur Petrol (ULSP) must be used.
- (05) The use of RME and FAME (Biodiesel) is not possible.
- (06) Official fuel consumption according to EU Directive 99/94. The consumption calculation according to 1999/100/EC is based on the actual unladen weight of the vehicle. Additional specifications can lead to a higher weight class and hence to consumption figures of this higher weight class. The driving style, road and traffic conditions, environmental influences and vehicle condition can in practice lead to consumption figures, which may differ from those calculated with this standard.
- (07) The weight of a vehicle will influence the level of CO₂ emission it produces; as a result, vehicles with higher levels of specification and factory-fitted options may emit higher levels of CO₂.

MAXIMUM LUGGAGE CAPACITY, LITRES

VDA measuring method using 200 x 100 x 50 mm blocks

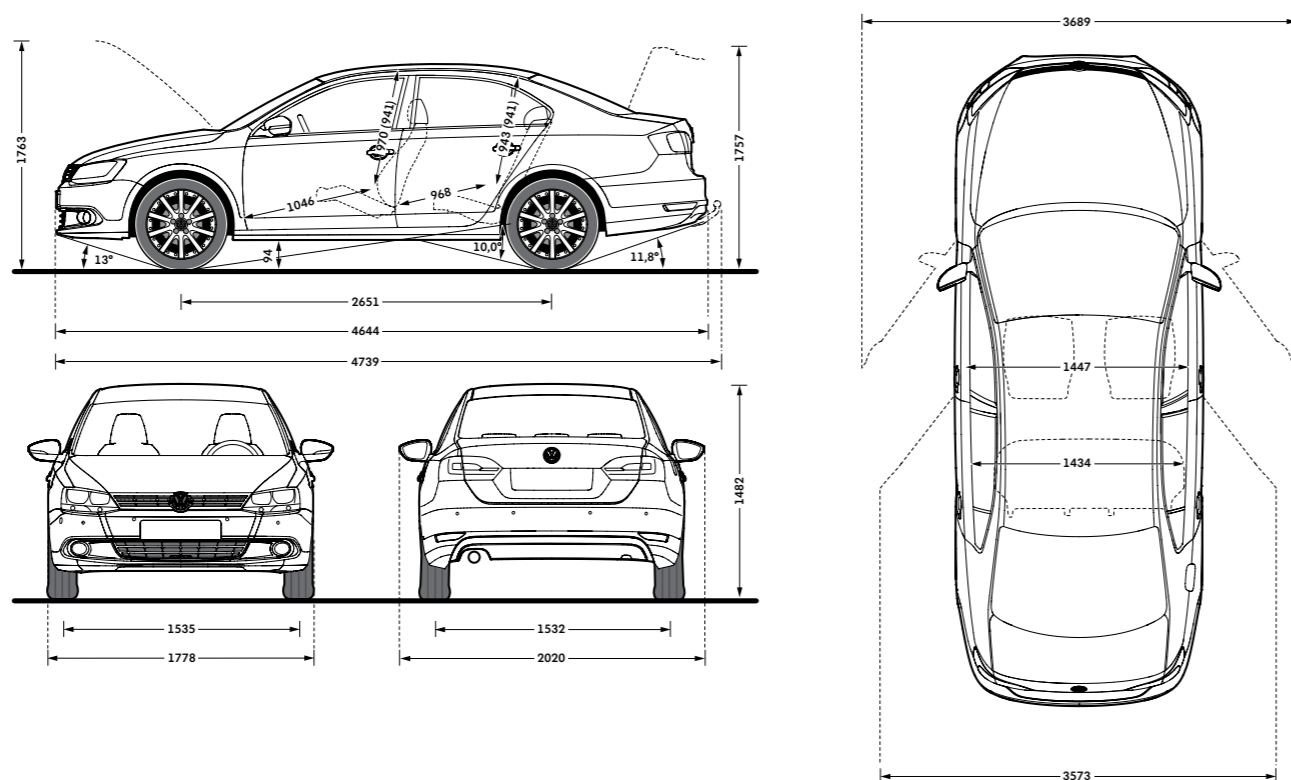
With rear seat upright	510
------------------------	-----

EXTERIOR DIMENSIONS

Length, mm	4644
Width – excluding door mirrors, mm	1778
Width – opened front/rear doors, mm	3689/3573
Height, mm	1482
Height – opened bonnet/floor, mm	1763
Height – opened boot lid/floor, mm	1757
Wheelbase, mm	2651
Turning circle, m	11.1

INTERIOR DIMENSIONS

Effective headroom – front (with sunroof), mm	970 (941)
Effective headroom – rear (with sunroof), mm	943 (941)
Elbow width – front, mm	1447
Elbow width – rear, mm	1434
Legroom – front, mm	1046
Legroom – rear, mm	968



ENGINES

1.4 litre/122 PS ⁽⁰¹⁾ (90 kW) petrol engine: CAXA TSI engine with homogeneous mode (Lambda 1), stratified high-pressure start, double injection catalytic converter heating, turbocharger with waste gate, air-to-liquid charge-air cooling, maintenance-free timing chain, plastic intake manifold with integrated intercooler, continuous inlet camshaft timing adjustment, grey cast iron cylinder block, steel crankshaft, duo-centric oil pump, dual-circuit cooling system. Fuel system regulated according to requirements using high pressure fuel pump with integrated pressure limiting valve

1.4 litre/160 PS ⁽⁰¹⁾ (118 kW) petrol engine: EU5 compliant four cylinder in-line engine with homogeneous mode (Lambda 1), stratified high-pressure start, turbocharger with waste gate, additional mechanical supercharger, intercooler and dual-circuit cooling system. Fuel system regulated according to requirements using high pressure fuel pump with integrated pressure limiting valve. Intake manifold flap change-over omitted, regulated duo-centric oil pump, metal cartridge oil filter and three way catalytic converter

1.6 litre/105 PS ⁽⁰¹⁾ (77 kW) common rail diesel engine: EU5 emissions standard, four cylinder in-line engine, four valves per cylinder, aluminium-silicon alloy cylinder head, reduced piston crown volume (improves swirl generation in the cylinder), toothed backlash compensator, intake manifold with electric continual tumble flap control, electronically controlled common rail direct injection fuel system with Bosch high pressure pump (up to 1800 bar) and 8-hole piezo injector units, pre-supply electronic fuel pump, oil cooler, intercooler, low temperature exhaust gas recirculation, additional coolant pump, turbocharger with variable turbine geometry, catalytic converter and Diesel Particulate Filter (DPF)

2.0 litre/140 PS ⁽⁰¹⁾ (103 kW) common rail diesel engine: EU5 emissions standard, four cylinder in-line engine, four valves per cylinder, aluminium-silicon alloy cylinder head, reduced piston crown volume (improves swirl generation in the cylinder), toothed backlash compensator, intake manifold with electric continual tumble flap control, electronically controlled common rail direct injection fuel system with Bosch high pressure pump (up to 1800 bar) and 8-hole piezo injector units, pre-supply electronic fuel pump, oil cooler, intercooler, low temperature exhaust gas recirculation, additional coolant pump, turbocharger with variable turbine geometry, catalytic converter and Diesel Particulate Filter (DPF)

TRANSMISSION

- Front wheel drive through asbestos-free single-plate dry clutch. Hydraulic clutch mechanism. Five/six speed manual or six/seven speed auto DSG gearbox with double joint half axles
- Electronic differential lock, combined with a hydraulically operated single-plate dry clutch with asbestos-free lining via a six speed auto DSG gearbox
- Five speed manual: 1.6 litre TDI 105 PS
- Six speed manual: 1.4 litre TSI 122 PS, 1.4 litre TSI 160 PS, 2.0 litre TDI 140 PS
- Six speed auto DSG: 2.0 litre TDI 140 PS
- Seven speed auto DSG: 1.4 litre TSI 160 PS, 1.6 litre TDI 105 PS

RUNNING GEAR

- Electronic Stabilisation Programme (ESP) including Electronic Differential Lock (EDL), Traction Control (ASR) and Countersteer Support
- Front suspension through coil springs with telescopic shock absorbers, all elements integrated in chassis legs
- Rear suspension with gas pressure shock absorbers and separate springs
- Wheel control: front through chassis legs and (lower) triangular wishbones (directionally stabilising steering roll radius)
- Wheel control: rear through four-link suspension with independent wheel suspension
- Front and rear anti-roll bar

STEERING

- Electro-mechanical steering rack
- Collapsible, height and lengthways adjustable safety steering column

BRAKES

- Electronically controlled Anti-lock Braking System (ABS) – includes BAS (Brake Assist System) and Electronic Brake-pressure Distribution (EBD)
- Diagonal twin-circuit brake system with inner-ventilated front disc brakes and rear disc brakes
- Asbestos-free brake pads
- Brake energy recuperation

THE VOLKSWAGEN WARRANTY

THREE-YEAR WARRANTY

All Volkswagen Jettas come with a three-year/60,000 miles warranty, which protects your car against the failure of most mechanical and electrical components due to manufacturing defects. This comprises a two-year manufacturer's warranty with unlimited mileage plus a further one-year/60,000 miles (whichever is soonest) Retailer Warranty. Should the mileage exceed 60,000 miles within the first two years, the manufacturer's two-year warranty will still be valid. If an additional warranty for subsequent years or higher mileage is desired, it may be purchased from an authorised Volkswagen retailer or repairer; however, this additional warranty must be purchased before the mileage reaches 60,000*. Full details of the three-year warranty are available from your authorised Volkswagen retailer or repairer.

* All warranty work must be completed by an authorised Volkswagen retailer or repairer.

THREE-YEAR PAINT WARRANTY

The paintwork of the Jetta is covered against manufacturing defects for a period of three years. Naturally, the Jetta must be cared for in compliance with the operating instructions which will be found in your vehicle handbook. Please consult your authorised Volkswagen retailer or repairer for full warranty details.

12-YEAR BODY PROTECTION WARRANTY

The internal body sections and panels of the Jetta are covered against rusting through from the inside for 12 years. Naturally, the Jetta must be cared for in compliance with the operating instructions. Please consult your authorised Volkswagen retailer or repairer for full warranty details.

APPROVED ACCESSORIES

A comprehensive range of accessories from alloy wheels to carpet mats is available to complement the factory-fitted option list. Volkswagen approved accessories purchased from and fitted by your authorised Volkswagen retailer at the point of vehicle sale will also benefit from the three-year vehicle warranty.

TAX FREE SALES

For full details, please contact your authorised Volkswagen retailer.

EXTENDED WARRANTY

You may purchase additional protection from your authorised Volkswagen retailer or repairer, or contact 0870 9000 115.

SERVICE INTERVALS

Volkswagen are pleased to offer you a choice on how your Jetta is serviced. The appropriate selection is entirely dependent on how the car is likely to be driven and its general use. To help you identify which type of service would be most suitable, please refer to the following guide.

The Time and Distance Service is recommended for vehicles that will cover less than 10,000 miles in 12 months and if the vehicle is likely to be used in the following way:

- Predominantly urban driving, short journeys with frequent cold starts.
- Activities regularly producing high engine loading, e.g. frequent hill climbs, driving with vehicle fully loaded and towing.
- Uneconomical driving style using high rpms with heavy acceleration and heavy braking.

The service intervals for the Time and Distance Service are as follows:

- Oil change service
Every 10,000 miles/1 year (whichever is soonest).
- Interval service
Every 20,000 miles/2 years (whichever is soonest).
- Inspection service
Every 40,000 miles/3 years (whichever is soonest).

The LongLife Service is recommended for vehicles with a daily mileage of more than 25 miles where the vehicle is driven regularly mainly on longer distance journeys. The vehicle is driven mainly at a constant speed with minimum vehicle and engine loading, minimal towing and driven in an economical manner.

With the LongLife Service the vehicle can cover anywhere between 10,000† and a maximum of 18,000† miles or 24 months (whichever is soonest) between oil changes. Inspection service is typically in the third year of ownership and thereafter every second year, for vehicles with an approximate annual mileage of 10,000 miles.

† Please note that mileages are approximate as the service indicator system uses kilometres as the distance measurement. Please consult your authorised Volkswagen retailer or repairer for advice and full details.

VOLKSWAGEN INSURANCE‡

We want you to start enjoying your new car from day one and thanks to Volkswagen Insurance complimentary seven day cover, you can. Call free on 0800 316 7892 (lines are open Monday to Friday 8 am - 9 pm and Saturday 9 am - 5 pm), provide a few details and a cover note will be sent to your retailer. They will then tax your car and you can drive it away. Visit www.insurewithvolkswagen.co.uk for details of the full range of insurance products available. Here you can also get a quote for your annual car insurance and buy it online too. All of our insurance products are designed to ease the pain of making a claim.

‡ Volkswagen Insurance is a trading name of Volkswagen Insurance Service (Great Britain) Limited, an appointed representative of Volkswagen Financial Services (UK) Limited, Brunswick Court, Yeomans Drive, Blakelands, Milton Keynes MK14 5LR. Registered in England number 2835230. Volkswagen Insurance is sold, underwritten and administered by Allianz Insurance plc registered in England number 84638. Registered office 57 Ladymead, Guildford, Surrey GU1 1DB. Volkswagen Financial Services (UK) Limited and Allianz Insurance plc are authorised and regulated by the Financial Services Authority. Volkswagen Financial Services (UK) Limited and Allianz Insurance plc are not part of the same corporate group.

VOLKSWAGEN FINANCE‡

Volkswagen Finance specialises in providing funding solutions for Volkswagen drivers. Whether your Volkswagen is for private or business use, you can choose from a range of funding options.

- Solutions – a personal contract plan
- Hire purchase
- Lease purchase
- Finance lease
- Contract hire

With all Volkswagen Finance products you can choose a fixed-cost maintenance plan to help you budget for your servicing and maintenance costs.

No matter what finance product you choose, your local Volkswagen retailer will be able to provide you with a personalised quote that could meet your budget and vehicle needs.

‡ Volkswagen Finance is a trading name of Volkswagen Financial Services (UK) Limited. An offer of finance depends on certain conditions. Available to people over 18 in the UK only.

VOLKSWAGEN ROADSIDE ASSISTANCE

Every new car is registered for Volkswagen Roadside Assistance for one year. This provides vehicle home and roadside recovery in the unlikely event of a breakdown in the UK and Europe (subject to conditions). Volkswagen Roadside Assistance can also be purchased for subsequent years. For full details, please contact your authorised Volkswagen retailer or repairer.

CO₂ EMISSIONS

Increased weight of a vehicle, including higher trim levels and the addition of options will have a detrimental influence on the level of fuel consumption and CO₂ emissions produced.

The CO₂ and fuel consumption figures are obtained from tests on a representative vehicle of the type, conducted and approved in accordance with Council Directive 80/1268/EEC as amended by Directive 1999/100/EC (or later) on the approximation of the laws of the member states relating to the carbon dioxide emissions and the fuel consumption of motor vehicles.

PLEASE NOTE:

Some illustrations in this brochure do not necessarily reflect UK specifications and may not be available. In particular, controls and some items of equipment are positioned differently for the UK.

The specifications contained in this brochure are for information purposes only and are subject to change. If you require any specific feature, you must consult your authorised Volkswagen retailer who is regularly updated with any change in specification. Please check model availability and full specification details with your authorised Volkswagen retailer prior to ordering.

Note: We would like to advise you that telephone calls to Volkswagen Customer Care may be monitored and recorded as part of our training and quality assurance processes. All our monitoring and recording processes meet OfTel regulations.



Model shown is Jetta Sport with optional metallic paint.

The Jetta

Volkswagen Information Service. Telephone 0800 333 666

Internet: www.volkswagen.co.uk

© Volkswagen Group United Kingdom Limited 2012.

Issue: 1 April 2012. Printed in UK.

PVV703JET