

The new Passat Alltrack

Volkswagen Information Service. Telephone 0800 333 666
Internet: www.volkswagen.co.uk
© Volkswagen Group United Kingdom Limited 2012.
Issue: 1 March 2012.



Das Auto.

The new Passat Alltrack



The Passat Alltrack. Leaves tracks.

We traversed Europe in the new Passat Alltrack using nothing but a sat nav, covering 4,985 miles and crossing six countries. We travelled through beautiful forests and fields, down gravel tracks and on stunning mountain passes and rediscovered not only the beauty of tarmac, but also that of conquering dust and dirt.



Combined fuel consumption for 140 PS and 170 PS: 49.6 mpg and 47.9 mpg with a CO₂ emission of 150 g/km and 155 g/km respectively. Model shown is Passat Alltrack with optional Bi-Xenon headlights and metallic paint.

Exterior.



18" 'Canyon' alloy wheels with anthracite wheel arch protection. | S



The Bi-Xenon headlights with dynamic curve and static corner lighting follow your steering movements and optimise the lighting of the road, as well as when turning. The new, integrated LED daytime running lights ensure that your vehicle is more visible in the day. | O



The robust matt chrome effect underbody protection gives the front and rear its distinctive, purist off-road design. | S

Model shown is Passat Alltrack 2.0 litre TDI 170 PS DSG 4MOTION.

Standard | S Optional | O

Less everyday life – more Alltrack.

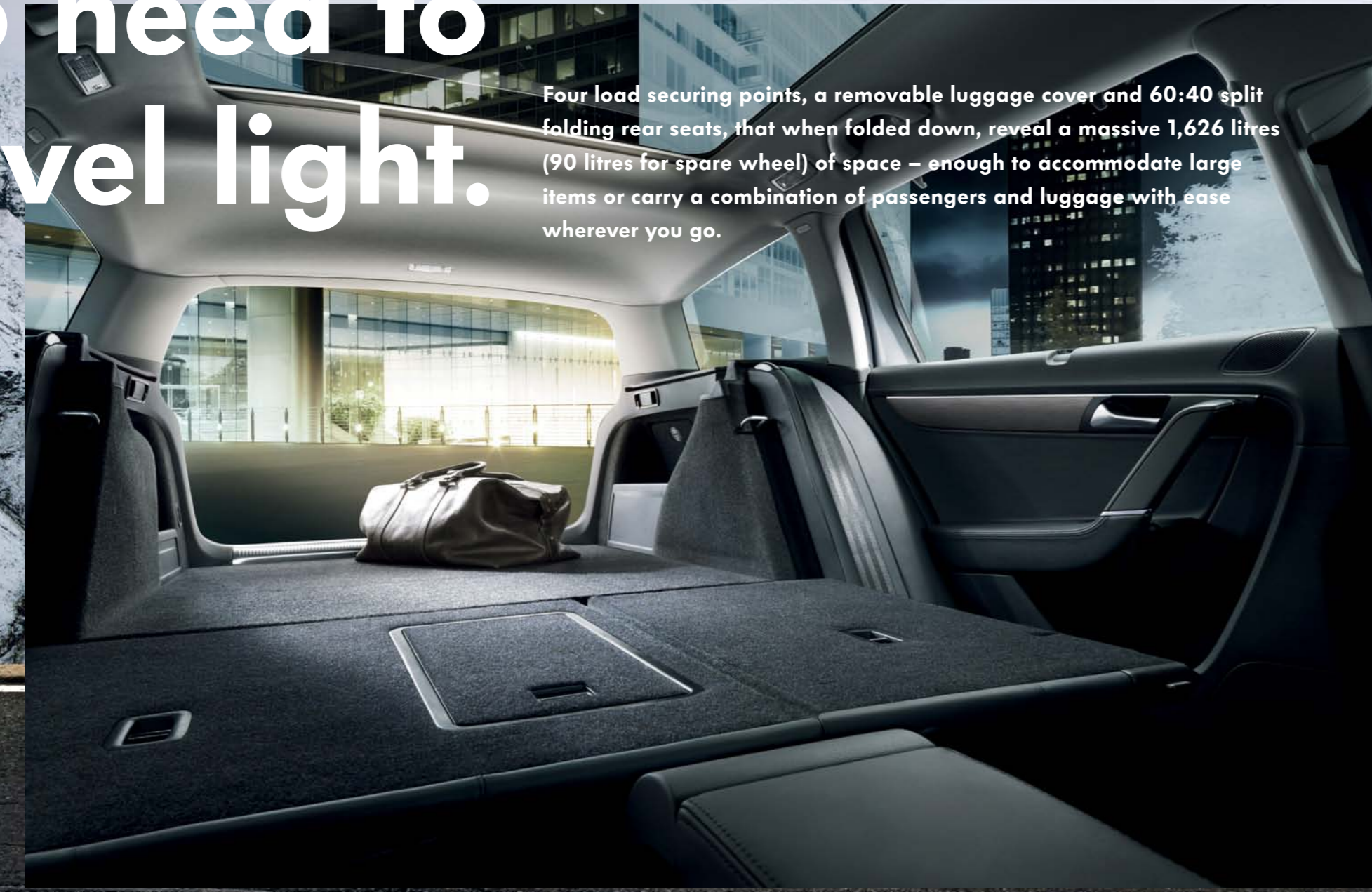
Underbody protection on the front and rear, anthracite and matt chrome effect side trim and 18" 'Canyon' alloy wheels make each and every one of your trips even more stylish.



Model shown is Passat Alltrack with optional Bi-Xenon headlights and metallic paint.

No need to travel light.

Four load securing points, a removable luggage cover and 60:40 split folding rear seats, that when folded down, reveal a massive 1,626 litres (90 litres for spare wheel) of space – enough to accommodate large items or carry a combination of passengers and luggage with ease wherever you go.



Measurement according to ISO 3832 using 200 x 100 x 50 mm blocks, with rear bench folded down and loading to roof. Interior shown is Passat Alltrack with optional panoramic sunroof.

Interior.



Cruise control also includes a Driver Alert system, which detects when the driver is becoming tired and recommends taking a break, this is achieved by monitoring driving behaviour and alerting the driver via a visual and audible warning. | S

The leather trimmed multifunction steering wheel is fitted with ergonomically designed switches, making it easy to use the radio and multifunction computer. Thanks to the height and reach adjustment of the steering column, the position of the steering wheel can also be individually adapted to your requirements. | S

Bluetooth telephone preparation allows you to use your mobile phone without taking it out of your pocket. The phone book and call information is displayed on the multifunction computer and the system can be easily operated using the standard multifunction steering wheel. | S

Phones must be compatible with HFP (Hands Free Profile), please contact your authorised Volkswagen retailer for phone compatibility.

Standard | S Optional | O



The RNS 315 touch-screen navigation/radio system with MP3 compatible CD player features a 5 inch colour display with clearly arranged map navigation, as well as an SD card reader and practical AUX-in socket for connecting external audio devices such as an iPod or MP3 player. | S

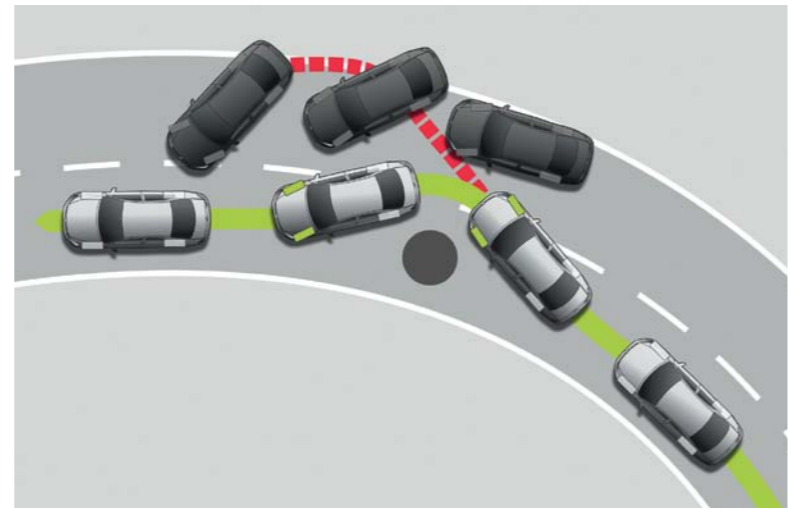


The 2Zone electronic climate control with automatic air recirculation can be individually adjusted by the driver and front passenger, enabling them to set their own desired temperature. | S

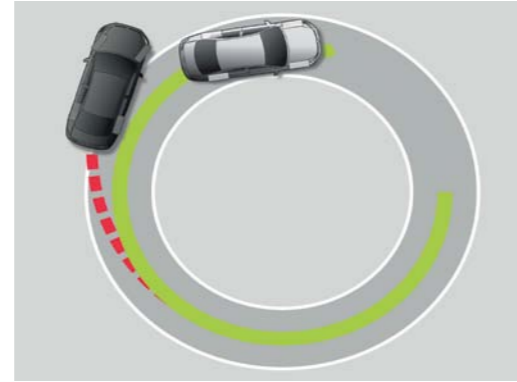
Technology.



TDI are three letters that have acquired legendary significance, symbolising high torque, low consumption and quiet performance. Two highly acclaimed TDI diesel engines generate an impressive 140 PS and 170 PS. Both utilise common rail technology and are fitted with a Diesel Particulate Filter (DPF) which filters out exhaust elements that are harmful to the environment, significantly reducing diesel emissions as a result.



The Electronic Stabilisation Programme (ESP) recognises critical driving situations and reacts in milliseconds by targeting brake and management systems, controlling the speed of individual wheels and helping to bring the vehicle under control. As a result the vehicle achieves maximum directional stability. | S



The 2.0 litre TDI 170 PS engine feature XDS, an extension of the well-known Electronic Differential Lock (EDL) function. This is linked to the Electronic Stabilisation Programme (ESP) hydraulics and works by applying pressure to the inner front wheel during fast cornering to prevent wheel-spin. | S | O – 2.0 litre TDI 140 PS



The standard airbag system consists of driver's and front passenger's airbags with front passenger's airbag deactivation switch, curtain airbags for front and rear occupants, and seat side impact airbags in the front. | S

Power with control.

Powerful diesel engines deliver optimum performance, while peace of mind is reassured with the highest levels of safety possible, ensuring optimum protection wherever you venture.

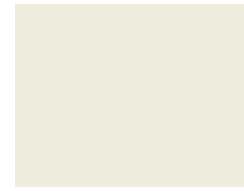


Model shown is Passat Alltrack 2.0 litre TDI 170 PS 4MOTION with optional metallic paint.

Paint.



Urano Grey
Standard
Non-metallic
5K



Candy White
Standard
Non-metallic
B4



Tornado Red
Standard
Non-metallic
G2



Light Brown*
Optional
Metallic
7S



Reflex Silver*
Optional
Metallic
8E



Iron Grey*
Optional
Metallic
9H



Tungsten Silver*
Optional
Metallic
K5



Dark Oak*
Optional
Metallic
P0



Night Blue*
Optional
Metallic
Z2



Deep Black*
Optional
Pearl Effect
2T



Island Grey*
Optional
Pearl Effect
C9

Inserts.



Titanium silver
Standard
5MN



Brushed aluminium**
Optional
5MD

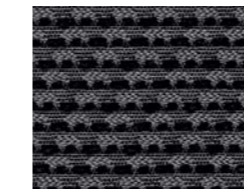


'Burr Walnut'*
Optional
5MG



'Zebrano'*
Optional
7TP

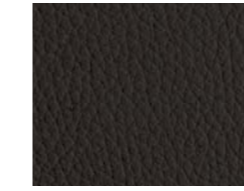
Upholstery.



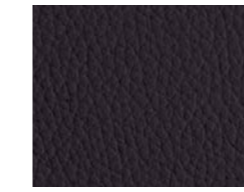
'Zabriskie' fabric
centre with Alcantara
side bolsters
Standard
Black/Grey
RO



'Vienna' leather* †
Optional
Desert Beige
NE/NV



'Vienna' leather* †
Optional
Espresso
KN



'Vienna' leather* †
Optional
Black
QQ



Perforated 'Vienna' leather* †
with climate and massage function
Optional
Espresso
KN



Perforated 'Vienna' leather* †
with climate and massage function
Optional
Black
QQ



**Sports seats in
'Nappa' leather* †**
Optional
Desert Beige
NE/NV



**Sports seats in
'Nappa' leather* †**
Optional
Espresso
KN



**Sports seats in
'Nappa' leather* †**
Optional
Black
QQ



**Sports seats in
'Nappa' leather* †**
Optional
Truffle/Black
WJ

* Optional at extra cost.

† Some parts of leather interior will contain artificial leather.

Please note: The print processes do not allow exact reproduction of the paint and upholstery colours.

Combinations.

Seat upholstery	Dashboard	Carpet	Roof lining	Urano Grey 5K	Candy White B4	Tornado Red G2	Light Brown* 7S	Reflex Silver Metallic* 8E	Iron Grey Metallic* 9H	Tungsten Silver Metallic* K5	Dark Oak Metallic* P0	Night Blue Metallic* Z2	Deep Black Pearl Effect* 2T	Island Grey Pearl Effect* C9
'Zabriskie' fabric centre with Alcantara side bolsters Standard														
Black/Grey RO	Black	Black	Pearl Grey	●	●	●	●	●	●	●	●	●	●	●
'Vienna' leather*† Optional														
Espresso KN	Espresso	Black	St Tropez	Black*	○	○	○	○	○	○	○	○	○	○
Desert Beige NE	Espresso	Desert Beige	St Tropez	Black*	○	○	○	○	○	○	○	○	○	○
Desert Beige NV	Espresso	Black	St Tropez	Black*	○	○	○	○	○	○	○	○	○	○
Black QQ	Black	Black	Pearl Grey	○	○	○	○	○	○	○	○	○	○	○
Perforated 'Vienna' leather*† with climate and massage function Optional														
Espresso KN	Espresso	Black	St Tropez	Black*	○	○	○	○	○	○	○	○	○	○
Black QQ	Black	Black	St Tropez	Black*	○	○	○	○	○	○	○	○	○	○
Sport seats in 'Nappa' leather*† Optional														
Espresso KN	Espresso	Black	St Tropez	Black*	○	○	○	○	○	○	○	○	○	○
Desert Beige NE	Espresso	Desert Beige	St Tropez	Black*	○	○	○	○	○	○	○	○	○	○
Desert Beige NV	Espresso	Black	St Tropez	Black*	○	○	○	○	○	○	○	○	○	○
Black QQ	Black	Black	Pearl Grey	○	○	○	○	○	○	○	○	○	○	○
Truffle/Black WJ	Black	Black	Pearl Grey	○	○	○	○	○	○	○	○	○	○	○

● Standard ○ Optional at extra cost – Not available

* Optional at extra cost.

† Some parts of leather interior will contain artificial leather.

Technical specification.

Diesel engines		2.0 litre TDI 140 PS 4MOTION BlueMotion Technology	2.0 litre TDI 170 PS 4MOTION BlueMotion Technology
Engines	engine type	Four cylinder	Four cylinder
	capacity, ltrs/cc	2.0/1968	2.0/1968
	max. output, PS ⁽⁰¹⁾ /kW at rpm	140/103 @ 4200	170/125 @ 4200
	max. torque, lbs.ft/Nm at rpm	236/320 @ 1750	258/350 @ 1750
	gearbox:	6 speed manual	6 speed auto DSG
Weights, kgs	unladen weight ⁽⁰²⁾	1706	1725
	gross vehicle weight	2280	2300
	payload ⁽⁰²⁾	649	650
	axle load limit: front/rear	1140/1190	1160/1190
Trailer load limits, kgs ⁽⁰³⁾	Braked 12% incline	2000	2000
	unbraked	750	750
	max. roof load	100	100
Performance	top speed, mph (km/h), where the law permits	123 (198)	131 (211)
	acceleration, secs 0 - 62 mph	10.3	8.9
	ABl insurance group, 1 - 50	21E	24E
Environmental information	fuel grade, minimum ⁽⁰⁴⁾	Diesel	Diesel
	fuel tank capacity, galls/ltrs	15.4/70	15.4/70
	official fuel consumption, mpg/ltr per 100 km ⁽⁰⁵⁾		
	urban	40.4/7.0	40.4/7.0
	extra-urban	56.5/5.0	53.3/5.3
	combined	49.6/5.7	47.9/5.9
	official CO ₂ emission, g/km ⁽⁰⁶⁾	150	155
	emission class	EURO 5	EURO 5
noise, dB	73.0	69.0	

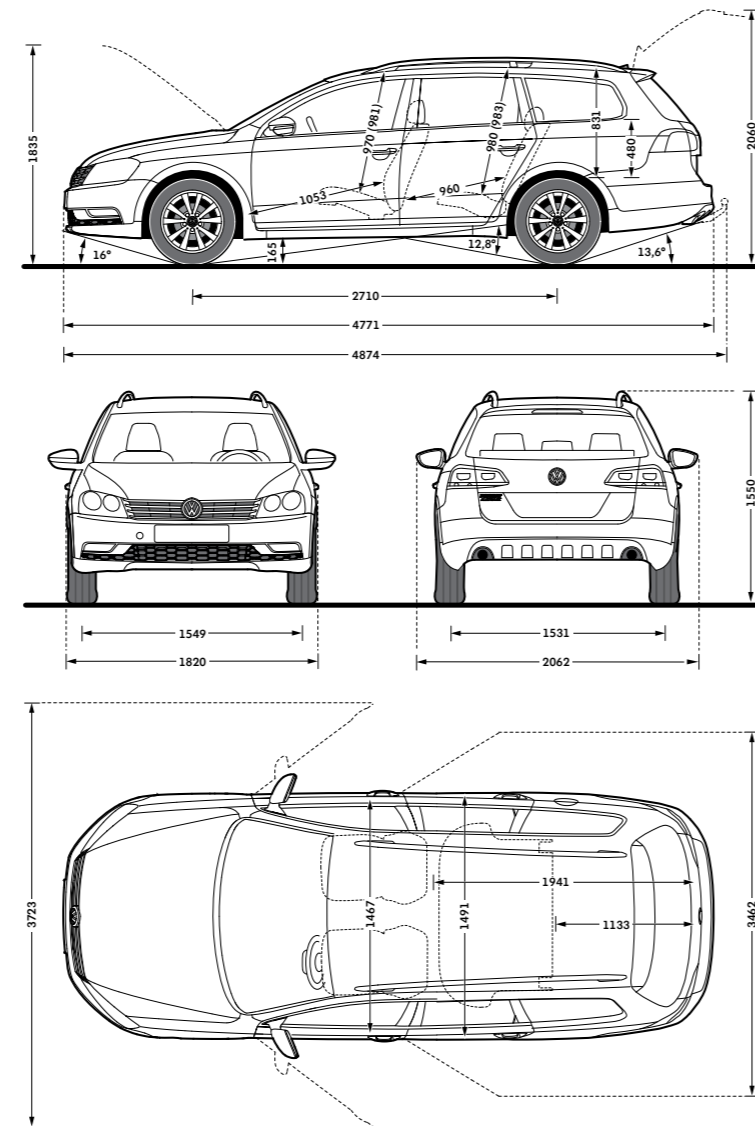
Technical specification (continued).

Technical specification notes

- 01) The maximum power output figures are quoted in PS (or Pferdestärke, which is the metric equivalent of horsepower). To convert from metric to imperial horsepower, divide the PS figure by 1.0139.
- 02) Figures are calculated in accordance with manufacturer's criteria. The individual unladen weight depends on the specification of the vehicle, this then reduces the possible payload accordingly. The unladen weight and payload both include the fuel tank 90% full, driver (68 kg) and luggage (7 kg) in line with EU directive 95/48.
- 03) With increasing altitude the engine performance diminishes. From 1,000 m above sea level and for every 1,000 m thereafter 10% of the vehicle/trailer weight (trailer weight + gross vehicle weight) must be deducted.
- 04) The use of 100% Biodiesel (RME or FAME) is not possible. Forecourt diesel with up to 7% biodiesel content, adhering to standard BS EN 590, can be used in diesel engines. The use of ethanol in forecourt petrol meeting BS EN 228 is allowable.
- 05) Official fuel consumption according to EU Directive 99/94. The consumption calculation according to 1999/100/EC is based on the actual unladen weight of the vehicle. Additional specifications can lead to a higher weight class and hence to consumption figures of this higher weight class. The driving style, road and traffic conditions, environmental influences and vehicle condition can in practice lead to consumption figures, which may differ from those calculated with this standard.
- 06) The weight of a vehicle will influence the level of CO₂ emission it produces; as a result, vehicles with higher levels of specification and factory-fitted options may emit higher levels of CO₂.

Exterior dimensions	Passat Alltrack
Length, mm	4771
Width – including door mirrors, mm	2062
Width – excluding door mirrors, mm	1820
Width – opened front doors, mm	3723
Width – opened rear doors, mm	3462
Height, mm	1550
Height – opened bonnet/floor, mm	1835
Height – opened tailgate/floor, mm	2060
Wheelbase, mm	2710
Turning circle, m	11.4

Interior dimensions	Passat Alltrack
Effective headroom – front (with sunroof), mm	970 (981)
Effective headroom – rear (with sunroof), mm	980 (983)



Technology.

Engines

- Front transverse-installed engine
- 2.0 litre/140 PS ⁽⁰¹⁾ (103 kW) common rail diesel engine: EU5 emissions standard, four cylinder in-line engine, four valves per cylinder, aluminium-silicon alloy cylinder head, reduced piston crown volume (improves swirl generation in the cylinder), toothed backlash compensator, intake manifold with electric continual tumble flap control, electronically controlled common rail direct injection fuel system with Bosch high pressure pump (up to 1800 bar) and 8-hole piezo injector units, pre-supply electronic fuel pump, oil cooler, intercooler, low temperature exhaust gas recirculation, additional coolant pump, turbocharger with variable turbine geometry, catalytic converter and Diesel Particulate Filter (DPF)
- 2.0 litre/170 PS ⁽⁰¹⁾ (125 kW) common rail diesel engine: EU5 emissions standard, four cylinder in-line engine, four valves per cylinder, aluminium-silicon alloy cylinder head, reduced piston crown volume (improves swirl generation in the cylinder), toothed backlash compensator, intake manifold with electric continual tumble flap control, electronically controlled common rail direct injection fuel system with Bosch high pressure pump (up to 1800 bar) and 8-hole piezo injector units, pre-supply electronic fuel pump, oil cooler, intercooler, low temperature exhaust gas recirculation, additional coolant pump, turbocharger with variable turbine geometry, catalytic converter and Diesel Particulate Filter (DPF)

Transmission

- Four wheel drive
- Six speed manual or six speed automatic DSG gearbox with double joint half axles
 - Six speed manual: 2.0 litre TDI 140 PS
 - Six speed automatic DSG: 2.0 litre TDI 170 PS

Running gear

- Electronic Stabilisation Programme (ESP) including Electronic Differential Lock (EDL), Traction Control (ASR) and Countersteer Support
- Front suspension through coil springs with telescopic shock absorbers, all elements integrated in chassis legs
- Rear suspension with gas pressure shock absorbers and separate springs
- Wheel control: front through chassis legs and (lower) triangular wishbones (directionally stabilising steering roll radius)
- Wheel control: rear through four-link suspension with independent wheel suspension
- Front and rear anti-roll bar

Steering

- Electro-mechanical steering rack
- Collapsible, height and lengthways adjustable safety steering column

Brakes

- Asbestos-free brake pads
- Battery regeneration (recuperation – energy recovery during braking)
- Diagonal twin-circuit brake system with inner-ventilated front disc brakes and rear disc brakes
- Electronic parking brake – with auto hold function
- Electronically controlled Anti-lock Braking System (ABS) with Electronic Brake-pressure Distribution (EBD)
- XDS electronic differential lock (optional on 140 PS)

Volkswagen service for your peace of mind.

The Volkswagen Warranty.

Three-year Warranty.

All Volkswagen Passat Alltracks come with a three-year/60,000 miles warranty, which protects your car against the failure of most mechanical and electrical components due to manufacturing defects. This comprises a two-year manufacturer's warranty with unlimited mileage plus a further one-year/60,000 miles (whichever is soonest) Retailer Warranty. Should the mileage exceed 60,000 miles within the first two years, the manufacturer's two-year warranty will still be valid. If an additional warranty for subsequent years or higher mileage is desired, it may be purchased from an authorised Volkswagen retailer or repairer; however, this additional warranty must be purchased before the mileage reaches 60,000*. Full details of the three-year warranty are available from your authorised Volkswagen retailer or repairer.

* All warranty work must be completed by an authorised Volkswagen retailer or repairer.

Three-year Paint Warranty.

The paintwork of the Passat Alltrack is covered against manufacturing defects for a period of three years. Naturally, the Passat Alltrack must be cared for in compliance with the operating instructions which will be found in your vehicle handbook. Please consult your authorised Volkswagen retailer or repairer for full warranty details.

12-year Body Protection Warranty.

The internal body sections and panels of the Passat Alltrack are covered against rusting through from the inside for 12 years. Naturally, the Passat Alltrack must be cared for in compliance with the operating instructions. Please consult your authorised Volkswagen retailer or repairer for full warranty details.

Approved Accessories.

A comprehensive range of accessories from alloy wheels to carpet mats is available to complement the factory-fitted option list. Volkswagen approved accessories purchased from and fitted by your authorised Volkswagen retailer at the point of vehicle sale will also benefit from the three-year vehicle warranty.

Extended Warranty.

You may purchase additional protection from your authorised Volkswagen retailer or repairer, or contact 0870 9000 115.

Tax Free Sales.

For full details, please contact your authorised Volkswagen retailer.

Service Intervals.

Volkswagen are pleased to offer you a choice on how your Passat Alltrack is serviced. The appropriate selection is entirely dependent on how the car is likely to be driven and its general use. To help you identify which type of service would be most suitable, please refer to the following guide.

The Time and Distance Service is recommended for vehicles that will cover less than 10,000 miles in 12 months and if the vehicle is likely to be used in the following way:

- Predominantly urban driving, short journeys with frequent cold starts.
- Activities regularly producing high engine loading, e.g. frequent hill climbs, driving with vehicle fully loaded and towing.
- Uneconomical driving style using high rpms with heavy acceleration and heavy braking.

The service intervals for the Time and Distance Service are as follows:

- Oil change service
Every 10,000 miles/1 year (whichever is soonest).
- Interval service
Every 20,000 miles/2 years (whichever is soonest).
- Inspection service
Every 40,000 miles/3 years (whichever is soonest).

The LongLife Service is recommended for vehicles with a daily mileage of more than 25 miles where the vehicle is driven regularly mainly on longer distance journeys. The vehicle is driven mainly at a constant speed with minimum vehicle and engine loading, minimal towing and driven in an economical manner.

With the LongLife Service the vehicle can cover anywhere between 10,000[†] and a maximum of 18,000[†] miles or 24 months (whichever is soonest) between oil changes. Inspection service is typically in the third year of ownership and thereafter every second year, for vehicles with an approximate annual mileage of 10,000 miles.

[†] Please note that mileages are approximate as the service indicator system uses kilometres as the distance measurement.

Please consult your authorised Volkswagen retailer or repairer for advice and full details.

Volkswagen Insurance[‡].

We want you to start enjoying your new car from day one and thanks to Volkswagen Insurance complimentary seven day cover, you can. Call free on 0800 316 7892 (lines are open Monday to Friday 8 am – 9 pm and Saturday 9 am – 5 pm), provide a few details and a cover note will be sent to your retailer. They will then tax your car and you can drive it away.

Visit www.insurewithvolkswagen.co.uk for details of the full range of insurance products available.

Here you can also get a quote for your annual car insurance and buy it online too. All of our insurance products are designed to ease the pain of making a claim.

[‡] Volkswagen Insurance is a trading name of Volkswagen Insurance Service (Great Britain) Limited, an appointed representative of Volkswagen Financial Services (UK) Limited, Brunswick Court, Yeomans Drive, Blakelands, Milton Keynes MK14 5LR. Registered in England number 2835230. Volkswagen Insurance is sold, underwritten and administered by Allianz Insurance plc registered in England number 84638. Registered office 57 Ladymead, Guildford, Surrey GU1 1DB. Volkswagen Financial Services (UK) Limited and Allianz Insurance plc are authorised and regulated by the Financial Services Authority. Volkswagen Financial Services (UK) Limited and Allianz Insurance plc are not part of the same corporate group.

Volkswagen Finance[±].

Volkswagen Finance specialises in providing funding solutions for Volkswagen drivers. Whether your Volkswagen is for private or business use, you can choose from a range of funding options.

- Solutions – a personal contract plan
- Hire purchase
- Lease purchase
- Finance lease
- Contract hire

With all Volkswagen Finance products you can choose a fixed-cost maintenance plan to help you budget for your servicing and maintenance costs.

No matter what finance product you choose, your local Volkswagen retailer will be able to provide you with a personalised quote that could meet your budget and vehicle needs.

[±] Volkswagen Finance is a trading name of Volkswagen Financial Services (UK) Limited.

An offer of finance depends on certain conditions. Available to people over 18 in the UK only.

Volkswagen Roadside Assistance.

Every new car is registered for Volkswagen Roadside Assistance for one year. This provides vehicle home and roadside recovery in the unlikely event of a breakdown in the UK and Europe (subject to conditions).

Volkswagen Roadside Assistance can also be purchased for subsequent years. For full details, please contact your authorised Volkswagen retailer or repairer.

CO₂ Emissions.

Increased weight of a vehicle, including higher trim levels and the addition of options will have a detrimental influence on the level of fuel consumption and CO₂ emissions produced.

The CO₂ and fuel consumption figures are obtained from tests on a representative vehicle of the type, conducted and approved in accordance with Council Directive 80/1268/EEC as amended by Directive 1999/100/EC (or later) on the approximation of the laws of the member states relating to the carbon dioxide emissions and the fuel consumption of motor vehicles.

Please Note:

Some illustrations in this brochure do not necessarily reflect UK specifications and may not be available. In particular, controls and some items of equipment are positioned differently for the UK.

The specifications contained in this brochure are for information purposes only and are subject to change.

If you require any specific feature, you must consult your authorised Volkswagen retailer who is regularly updated with any change in specification. Please check model availability and full specification details with your authorised Volkswagen retailer prior to ordering.

Note: We would like to advise you that telephone calls to Volkswagen Customer Care may be monitored and recorded as part of our training and quality assurance processes. All our monitoring and recording processes meet Ofcom regulations.