



PEUGEOT 107



PEUGEOT

## 107 EDITORIAL

If you think about what the perfect urban car might be like, chances are daring, modern, compact and fantastically manoeuvrable would be right at the top of your list. That's what the new 107's all about. It's a little beauty too, with a new front end and even better features.

Designed to get you safely around town, this cute car will zip you through traffic in no time. So why not get to know it a little bit better.







# CITY COOL

CHARMING, MODERN,  
UNCONVENTIONAL: THE 107'S ORIGINAL  
STYLING HAS A NEW TWIST

THERE'S A NEW FRONT BUMPER WITH A CHROME STRIP, A REDESIGNED DEEPER LOWER FRONT PANEL PLUS MODERN DECORATIVE TOUCHES FROM SUBTLE TO CHEEKY. IT COMES IN BRIGHT AND LIVELY COLOURS TOO. SO WHY NOT PAINT THE TOWN PLUM?



## *TURNING*

IT'S JUST AS A CITY CAR SHOULD BE - AGILE AND COMPACT, WITH A TIGHT TURNING CIRCLE. SO YOUR MOST COMPLICATED MANOEUVRES WON'T PHASE YOU IN THE SLIGHTEST - THE 107'S AGILE ENOUGH TO NIP AROUND HERE, THERE... PRETTY MUCH ANYWHERE.







INTERIOR  
SPACE  
A LA CARTE!

107

*FOUR  
FULL  
SEATS*  
*FEEL CALM  
AND COMFY  
WHEREVER  
YOU'RE  
SITTING*

THERE'S LOTS OF SPACE  
INSIDE, BUT IT'S STILL  
COMPACT AND USER-  
FRIENDLY FOR EASY  
DRIVING AND EVEN  
EASIER PARKING!



*SIX  
CHOICES*  
*THREE  
DISTINCT  
LEVELS OF  
SPECIFICATION*

3 OR 5 DOORS?  
SIMPLE OR SWISH?  
HAVE IT YOUR WAY.





# STYLE

*ELEGANT LINES AND CAREFULLY CRAFTED FINISHES. THE 107 IS A CAR OF CULTIVATED **REFINEMENT***

## MODERN DETAILS

It was always nice to look at, but now the 107 is even more tempting, with a new, modern front end. New LED fog light surrounds\* subtly show off the bumper styling. Smart black lining on its rear lights plus new fog lights\* are a few of the other thoughtful details.

## AN EXTERIOR MAKEOVER

With new lower front panels and a front bumper with chrome-plated surrounds\*, the car has a refined, sharp look about it. The new grille,

the new look Lion badge and a repositioning of the registration plate dead centre in the lower front panel give the 107 an unmistakably modern edge.

## THE STORY CONTINUES INSIDE

The passenger compartment is comfortable and attractively designed. The off-centre rev counter\* adds another dial to the instrument panel.

\* Take a look at the pricing and specification guide for more information







# INTERIOR *LIFE* IT'S WHAT'S *INSIDE THAT* COUNTS

So, about the new interior. The new cabin boasts Manhattan trim and a stylish fascia panel. Equipment feels contemporary and includes a leather steering wheel with paddle shift gearbox and an audio system with a CD player, USB port and bluetooth connection.\*

\* Take a look at the pricing and specification guide for more information







# A 107 FOR ALL

IT'S NIPPY AND COMPACT,  
BUT REFRESHINGLY  
PRACTICAL, PROVIDING  
PLENTY OF PASSENGER  
SPACE FOR EVERYONE.

Inside it's a design delight.  
The 107's been designed ergonomically  
so everyone's got a comfortable place to sit  
and the largest amount of space possible.

There's also lots of clever  
little storage solutions  
and practical details.

# 107





# ENGINE

SAY YES TO PERFORMANCE, REDUCED CO<sub>2</sub> EMISSIONS AND FUEL ECONOMY. THE 107 USES AN ENGINE THAT EASILY MEETS EURO 5 EMISSIONS STANDARDS.

## THE 107 AND THE ENVIRONMENT

It's good to know that the 107's already low CO<sub>2</sub> emissions have been cut even more. Now it's 99g/km CO<sub>2</sub> compared to the previous 103g/km for 1.0 petrol manual gearbox models. And 104g/km CO<sub>2</sub> instead of 106g/km for 1.0 petrol 2-Tronic gearbox models.

## PETROL ENGINE

The 3-cylinder 12-valve engine has a maximum power of 68 bhp. It's really economical too, giving you 63 miles per gallon on a combined cycle.

## 2-TRONIC GEARBOX

If you want to make driving easier, you can. Choose a 2-Tronic piloted gearbox (model fitted with steering wheel paddles). It means that in fully automated mode, the gears are changed automatically and you don't have to do a thing. Switching back to manual is easy - all you have to do is flick the switch back to manual sequential mode.

## CONSUMPTION AND EMISSIONS (CO<sub>2</sub>)

	Engines	
	1.0 Litre Petrol 12v 68 bhp	1.0 Litre Petrol 12v 68 bhp
	Manual	2-Tronic
Urban Drive Cycle (mpg)	55.38	52.31
Extra Urban Drive Cycle (mpg)	74.33	70.62
Combined Drive Cycle (mpg)	65.69	62.77
CO <sub>2</sub> emissions (g/km)	99	104







**IT'S FUNNY  
HOW  
WE FEEL  
SAFER  
IN CERTAIN  
VEHICLES?**

**BEHIND ITS REFRESHED DESIGN, THERE'S REAL  
STRENGTH AND HEIGHTENED PROTECTION IN THE 107:  
UP TO 6 AIRBAGS PLUS ADDITIONAL SAFETY EQUIPMENT.  
HERE'S A REASSURING OVERVIEW.**

#### **AIRBAGS**

There are up to 6 airbags to protect passengers if there's a collision:

- 2 front airbags, driver and passenger
- 2 front side airbags\*
- 2 curtain airbags\*

#### **REINFORCED STRUCTURE**

The body framework and structure of the 107 incorporate 'crumple' zones so that energy is absorbed if there's an impact to protect the occupants. There's also a bar fitted on the absorbers to give the front bumper a high absorption capacity.

#### **ESP®\***

On the 107, ESP\* (Electronic Stability Programme) combines dynamic stability control with a traction control system (ASR) to allow you to maintain the grip and control of the 107 in emergency situations.

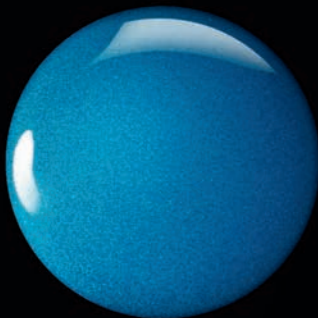
#### **HEAD RESTRAINTS AND SEAT BELTS**

The front seats have head restraints to limit 'whiplash'. The front seats are fitted with pretensioning seat belts and force limiters but, don't worry, we haven't forgotten our younger passengers: the rear seats are fitted with mountings to accommodate Isofix compatible child seats.

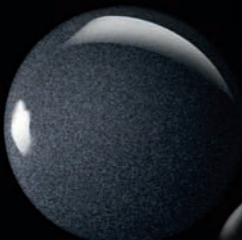
\* Take a look at the pricing and specification guide for more information



▶ ELECTRA BLUE



▶ CARBON GREY



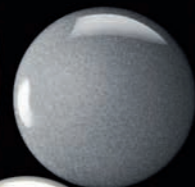
▶ RAVEN BLACK



▶ LASER RED



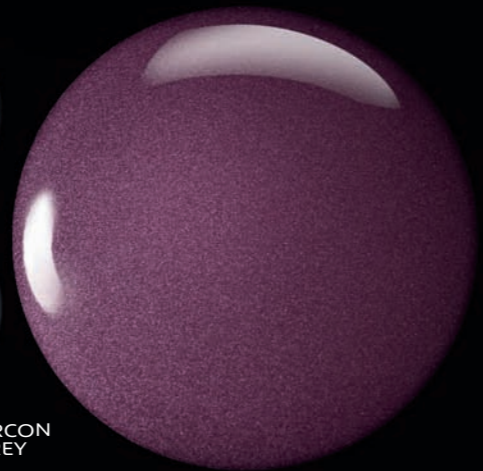
▶ ZIRCON GREY



▶ DIAMOND WHITE



▶ PLUM



# COLOURS

GET VIVID! THE 107 COMES IN LIVELY SOLID AND METALLIC PAINT CHOICES.

# INTERIOR TRIM

CHOOSE THE TRIM THAT'S RIGHT FOR YOU AND YOUR NEW 107.

▶ ALCANTARA

▶ MANHATTAN GREY

▶ CITY





# ACCESSOIRES & WHEELS

WHAT DO YOU FANCY FOR YOUR 107?



- ▶ Aluminium effect door mirror covers
- Envy personalisation kit
- Aluminium effect side mouldings
- 14" City Alloys



▲ Roof bar mounted cycle attachment



▲ Glove Box



- ▶ Tailgate spoiler
- Sports rear lights
- Aluminium effect rear diffuser
- 15" LS Alloys



▲ iPod docking station

## PEUGEOT AND YOU

When you choose Peugeot, you have the reassurance of knowing that your vehicle has been designed and manufactured to give you years of worry-free motoring. What's more, as a Peugeot owner, you can rely on a comprehensive range of customer care services from your Dealer. So you can be sure that you're talking to a specialist who'll listen to you, understand your problems and respond efficiently – someone who also has the expertise to maintain your Peugeot correctly, using trained technicians, Peugeot Diagnostic Equipment and Peugeot Original Equipment Parts.

### FOR YOUR PEACE OF MIND (1)

#### PEUGEOT WARRANTIES

As well as the 2 year unlimited mileage manufacturer's Warranty, all vehicles first registered in the UK and purchased from a UK Peugeot Dealer come with a free, optional additional year of Warranty through the Peugeot UK Dealer network. The mileage limit on this additional Warranty is 60,000 miles (100,000 miles for Boxer vans excluding Motorhomes and other converted vehicles) from first registration. At the end of the 3 year Warranty period (or after 60,000 miles) you have the option to purchase a Peugeot Platinum Extended Warranty. Our cars also come with a 12 Year

Anti-Perforation and 3 Year Point Warranty (6 and 2 years on vans). For full terms and conditions on all of these, please contact your Peugeot Dealer.

#### PEUGEOT ASSISTANCE

All new Peugeots come with 12 months Peugeot Assistance – our breakdown assistance service. This covers all

incidents involving vehicle-based faults for you and anyone else driving your car with your permission. It is available 24/7, 365 days a year. Peugeot Assistance includes European cover, homestart, roadside assistance, vehicle recovery and a free replacement car or hotel accommodation if required. It can be extended for a further 12 months, or 24 months, and to protect you against non-vehicle faults (such as punctures) at specially discounted rates, by calling 0870 752 7050.

#### PEUGEOT SERVICE CARE

Peugeot vehicles benefit from extended service intervals of up to 20,000 miles or 2 years (12,000 miles for 1.6 HDi diesel ; 24,000 miles or 2 years on Boxer, 10,000 miles or 1 year on 107). Please refer to the maintenance book for details of the service intervals for specific models and vehicles operating in arduous conditions. **FINANCE - LET THE SPECIALISTS HELP** Peugeot Financial Services offer a number of flexible finance plans that make owning

a new Peugeot easy. We specialise in car finance and can provide you with choice, convenience and flexibility directly through your local dealer. Written quotations are available on request from: Peugeot Financial Services, Quadrant House, Princess Way, Redhill, RH1 1QA. Over 18's only, a guarantee may be required.

#### PEUGEOT INSURANCE

Peugeot Insurance has been designed specifically for Peugeots and offers tailored cover at a competitive price. If you are unfortunate enough to have an accident, one of our Peugeot Approved Accident Repair Centres will repair your car, using only Peugeot original parts. Plus we'll give you a courtesy car while yours is being repaired (subject to availability when you use an approved repairer). When the time comes to renew your insurance cover, why not try Peugeot Insurance? You can call Peugeot Insurance for a quote on 0870 0240 206.

Lines open 8am-8pm weekdays, 9am- 5pm Saturdays. Max call charge from a BT landline is 8p per minute. Calls from other networks may vary. Calls may be recorded. Peugeot Insurance is underwritten by UK Insurance Limited. Conditions apply.

**PEUGEOT AND THE ENVIRONMENT** Our website has full details on all Peugeot products, and offers available in the UK. You'll also find information about our environmental and recycling policies.

#### PEUGEOT ACCESSORIES

Peugeot Accessories are designed specifically for each model which means there are no compromises on fit or function. In addition they are rigorously tested to our own high standards giving you complete confidence and peace of mind.

The information contained in this brochure is based on the data and images available at the time of printing. Some feature combinations may not be available in the UK. Also, some photography may feature vehicles which are left hand drive. As part of our policy of continuous specification improvement, Peugeot reserve the right to modify technical equipment, the options available, and colours at any time. For full specification ask your Peugeot Dealer, or click on [www.peugeot.co.uk](http://www.peugeot.co.uk). Please note that print and photographic processes used in the creation of this brochure may alter the depth and tone of the colours shown. This brochure is not a contractual document or offer of sale. The details in this brochure cannot be reproduced without the expressed authorisation of Peugeot.

Issued by: Sales and Marketing, Peugeot Motor Company, Pinley House, 2 Sunbeam Way, Coventry, CV3 1ND  
For details of HM Forces tax-free military sales contact: Peugeot Export, 615 Penistone Road, Sheffield, S6 2GA

Telephone: 0114 285 6181

Email: [peugeot.export@peugeotmail.co.uk](mailto:peugeot.export@peugeotmail.co.uk)

[www.export.peugeot.co.uk](http://www.export.peugeot.co.uk)

Customers seeking End of Vehicle Life information should call 0845 257 3233

For all other enquiries please call 0845 200 1234 (Calls will be charged at local rate and may be recorded for training or quality purposes.)





Created by: bd-ntwk - Realized by: Altavia Paris - Edited by: Gutenberg Networks -  
Peugeot Motor Company PLC - B 552 144 503 - Printed in the EU. - MCP3673

Dealer Stamp

PEUGEOT RECOMMENDS TOTAL

[www.peugeot.co.uk](http://www.peugeot.co.uk)