

GOLF. DAS AUTO.



Das Auto.



03	THE NEW GOLF.
08	DESIGN.
18	THE NEW GOLF S.
20	THE NEW GOLF SE.
22	THE NEW GOLF GT.
24	THINK BLUE.
26	ENGINES AND GEARBOXES.
32	SAFETY.
40	EQUIPMENT.
48	PAINT.
52	UPHOLSTERY.
53	COMBINATIONS.
54	TECHNICAL SPECIFICATION.
56	TECHNOLOGY.
57	DIMENSIONS.
58	VOLKSWAGEN SERVICE.



Model shown is new Golf GT with optional Bi-xenon headlights, 18" 'Serron' alloy wheels and metallic paint.



IN ONE SECOND A PERSON CAN
PROCESS JUST **SIX WORDS.**
OR, AN ENTIRE IMAGE.

MORE AERODYNAMIC, MORE ATHLETIC AND
MORE ELEGANT. BUT STILL UNMISTAKABLY A GOLF.

Model shown is new Golf GT with optional Bi-xenon headlights and metallic paint.

WHEN SOMEONE SEES
SOMETHING BEAUTIFUL,
THEIR PUPILS DILATE BY UP TO 20%.



Model shown is new Golf GT with optional metallic paint.



Iconic down to the last detail: the body-coloured door mirrors are now mounted stylishly on the lower window line, allowing an extra triangular window to improve all-round vision. Integrated rear lights blend harmoniously with the bodywork, creating a powerful presence.



Model shown is new Golf GT with optional Bi-xenon headlights and metallic paint.



OVER A LIFETIME,
THE AVERAGE PERSON WILL
TAKE DETOURS OF NEARLY
15,000 MILES.

YOU CAN ENJOY EVERY ONE – THANKS TO THE
EXCEPTIONAL LEVELS OF COMFORT, QUALITY,
FUNCTIONALITY AND SPACIOUSNESS IN THE NEW GOLF.

Interior shown is new Golf GT DSG with optional Discover Navigation Pro touch-screen navigation/DVD radio system,
2Zone electronic climate control, 'Vienna' leather upholstery and metallic paint.



When it comes to functionality and ergonomics, the new Golf excels. For a more controlled, intense driving experience, the newly designed centre console is angled slightly towards the driver. This ensures both the touch-screen of the new infotainment system and the controls for the air conditioning and heating are easy to reach, with every switch and display intuitively to hand, exactly where you would expect it to be. And yet again, we're raising the benchmark in workmanship and finish, with chrome-plated surrounds on controls and switches, depending which model you select. All of which ensures the new Golf not only looks good, but feels good too – the true test of quality.

Image shown is for illustrative purposes only and does not show the actual field of vision.

A PERSON'S CENTRAL FIELD OF VISION COVERS JUST 30 DEGREES.

IN THE NEW GOLF, THE DASHBOARD AND CENTRE CONSOLE ARE ANGLED TOWARDS THE DRIVER, ENSURING ALL CONTROLS ARE OPTIMALLY POSITIONED AND INFORMATION IS CLEARLY IN VIEW.



Interior shown is new Golf GT DSG with optional Discover Navigation Pro touch-screen navigation/DVD radio system, 'Vienna' leather upholstery, 2Zone electronic climate control and metallic paint.



Closed, half open or fully open, the optional electric panoramic sliding/tilting glass sunroof opens up a world of possibilities. The long glass roof merges into the windscreen, so that you are almost completely surrounded by sky and the sweep of the horizon. When open, you can enjoy fresh air even at high speeds without the worry of turbulence; and when closed, the sunroof reflects 99% of UV radiation, 92% of heat and 90% of light thanks to the optimised insulation. Should the sun get too hot or the sky too grey, simply close the integrated roller blind, even if the sunroof is open, allowing in draught-free ventilation. Optional on SE and GT models.

DIRECT **SUNLIGHT** INCREASES HUMAN ENDORPHIN PRODUCTION 8-FOLD.

MORE LIGHT, MORE AIR, MORE ATMOSPHERE: THE OPTIONAL PANORAMIC ELECTRIC SLIDING/TILTING GLASS SUNROOF INCREASES DRIVING FUN THREE TIMES OVER.

Model shown is new Golf GT with optional 18" 'Serron' alloy wheels, panoramic sunroof and metallic paint.



Model shown is new Golf GT with optional 'Vienna' leather upholstery and metallic paint.

Whether you're moving house, visiting a car boot sale or going on a major shopping trip, thanks to the spacious boot, low loading sill and folding rear seats, even the most awkward of objects can easily be tucked away in the new Golf. Just as flexible as the interior, the variable boot space is capable of meeting many challenges, and can easily be adapted to provide extra capacity. A height adjustable and removable boot floor increases the capacity significantly and can create an almost level load area with the folded rear seats – very useful if you're transporting a lot of small objects. And to accommodate larger objects, the stowable luggage compartment cover can be removed easily, providing even greater space.

ON AVERAGE,
A PERSON OWNS AROUND
10,000 POSSESSIONS.

IN THE NEW GOLF, THERE IS ROOM FOR EVERYTHING: THANKS TO A BIGGER BOOT AND GREATER FUNCTIONALITY, PROVIDING MORE SPACE AND MORE FLEXIBILITY.

THE NEW GOLF S

EQUIPMENT

The new Golf S offers better performance, greater safety and a higher level specification than ever before. Key features include the new Composition Media system with 5.8 inch colour touch-screen, DAB digital radio receiver, Bluetooth telephone connection*, multifunction computer and manual air conditioning fitted as standard, ensuring an exceptional driving experience. Inside, 'Dark Rhodium Fine' decorative inserts in the dash and door panels complement the stylish and durable 'Salt' cloth upholstery. Safety features such as Automatic Post-Collision Braking System, electronic tyre pressure monitoring system and XDS electronic differential lock for improved traction and handling make your journey even safer and more enjoyable, while remote central locking, electric front windows and an electronic parking brake make for a more convenient journey. The distinctive black radiator grille and front air intake, halogen clear headlights with daytime running lights, and heat insulating tinted green glass exude style and charisma, epitomised by the sleek tornado line running down the side of the new Golf. Full size 15 inch wheel trims and twin exhaust tailpipe (not 85 PS or 105 PS engines) complete the look. However, the new Golf doesn't just have great looks and lots of specification, it also packs in some great technology to help you save fuel. Already more fuel efficient than its predecessor it features a Start/Stop function, visual gear change recommendation and battery regeneration (recuperation – energy recovery during braking), so it's kinder to your wallet.

01 Manual **air conditioning** ensures a pleasant cabin temperature throughout, with the selected temperature reached quickly and efficiently and then regulated.

02 The **Composition Media system** is equipped with a 5.8 inch colour touch-screen, DAB digital radio receiver, glovebox-mounted single CD player, MDI (Multi Device Interface) with iPod connection cable, SD card reader and also features title and cover art display.

03 Distinctive **halogen clear headlights** set into the stylish black radiator grille, along with the new design air intake and body-coloured bumpers create a character that's unmistakably Golf.

* Phones must be Bluetooth compatible, please contact your authorised Volkswagen retailer for specific phone compatibility.



Interior shown is new Golf S with optional metallic paint.



THE NEW GOLF SE

EQUIPMENT

More elegant, luxurious and flexible than ever, the new Golf SE offers the highest levels of comfort and convenience you could ask for. Outside is characterised by stylish 16 inch 'Toronto' alloy wheels, with the chrome detailing on the front radiator grille and air intake continuing inside with the chrome-plated light switch surround. The interior is upholstered in 'Zoom/Micro' cloth and 'Brushed Dark Silver' decorative inserts adorn the dash and door panels. Standard features include front comfort seats with height and lumbar adjustment, a leather-trimmed three spoke multifunction steering wheel and gear knob, and an alarm with interior protection. Safety and security is enhanced with PreCrash preventive occupant protection and a Driver Alert system to advise you when to take a break. Also fitted as standard is ADC (Automatic Distance Control), which under certain conditions will maintain a distance to a car in front. ADC also includes Font Assist which uses radar sensors to monitor the traffic situation in front of your car and warn of a potential rear-end collision and City emergency braking system will boost brake pressure should it be required. Driver profile selection allows you to choose the driving style you prefer and cruise control and speed limiter help take the strain out of your journey. A rain sensor and automatic dimming interior rear-view mirror, automatic coming/leaving home lighting function and, on 5-door models, rear electric windows are convenient additions. Finally, a 3.5 inch TFT multifunction computer will tell you everything you need to know about your trip, leaving you to enjoy your journey in the greatest of comfort.

01 The 16 inch 'Toronto' alloy wheels give the exterior a dynamic look.

02 ADC (**Automatic Distance Control**) including Front Assist, radar sensor controlled distance monitoring system with City emergency braking system and cruise control offers you intelligent control of your driving speed by automatically adjusting acceleration and braking.

03 The **Driver Alert system** monitors your driving behaviour and if it detects the vehicle deviating from its lane, or if you've been driving too long, it will advise you to take a break both acoustically and visually.

01



02



03



Interior shown is new Golf SE with optional metallic paint.

THE NEW GOLF GT

EQUIPMENT

Sporty, charismatic and refined, the new Golf GT combines exclusivity with elegance, offering a driving experience that is second to none. Its exterior features stylish 17 inch 'Dijon' alloy wheels and sports suspension lowered by approximately 10mm, giving it more poise and sports appeal. Front fog lights with static cornering function add further style and safety, while the black front air intake, radiator grille with chrome trimmed inserts and roundel surround, and 65% light absorbing tinted glass from the B pillar backwards, are perfectly complemented by 'Cherry red' rear light clusters. Inside, front sports seats with height and lumbar adjustment upholstered with Alcantara seat centre sections and 'Global' cloth side bolsters perfectly complement the Cyclone' decorative inserts in the dash and door panels and 'Gloss Black' decorative inserts in the centre console. Standard equipment includes the Discover Navigation system with a 5.8 inch colour touch-screen which features preloaded European navigation data, Traffic Sign display, branded points of interest, the choice of 2D or 2.5D view, plus all the functionality of the Composition Media system. Ambient lighting is created by lights in front centre armrest and light strips set below the trim in the front doors, and along with front and rear carpet mats and chrome detailing on the electric window and mirror switch surrounds, they enhance the already luxurious feel. Finally, front and rear parking sensors with optical parking display via the vehicle's audio system and electrically foldable door mirrors with reverse activated kerb-view adjustment on the passenger's door mirror provide extra convenience when parking.

01 The **leather trimmed three-spoke multifunction steering wheel** enables you to change gears on DSG models using the paddle shift, and control such functions as ADC (Automatic Distance Control), cruise control, radio, phone and the multifunction display without taking your hands off the wheel.

02 The 17 inch '**Dijon**' alloy wheels complete with sports suspension, lowered by approximately 10mm, give the exterior a stylish and sporty look.

03 The **front fog lights** including static cornering function improve visibility in poor driving conditions and are a stylish addition to the front of the new Golf GT.



Interior shown is new Golf GT DSG with optional Discover Navigation Pro touch-screen navigation/DVD radio system, 2Zone electronic climate control, 'Vienna' leather upholstery and metallic paint.

Think Blue.



EACH MONTH THE AVERAGE HUMAN
BREATHES THE
EQUIVALENT VOLUME OF
150,000 BALLOONS.

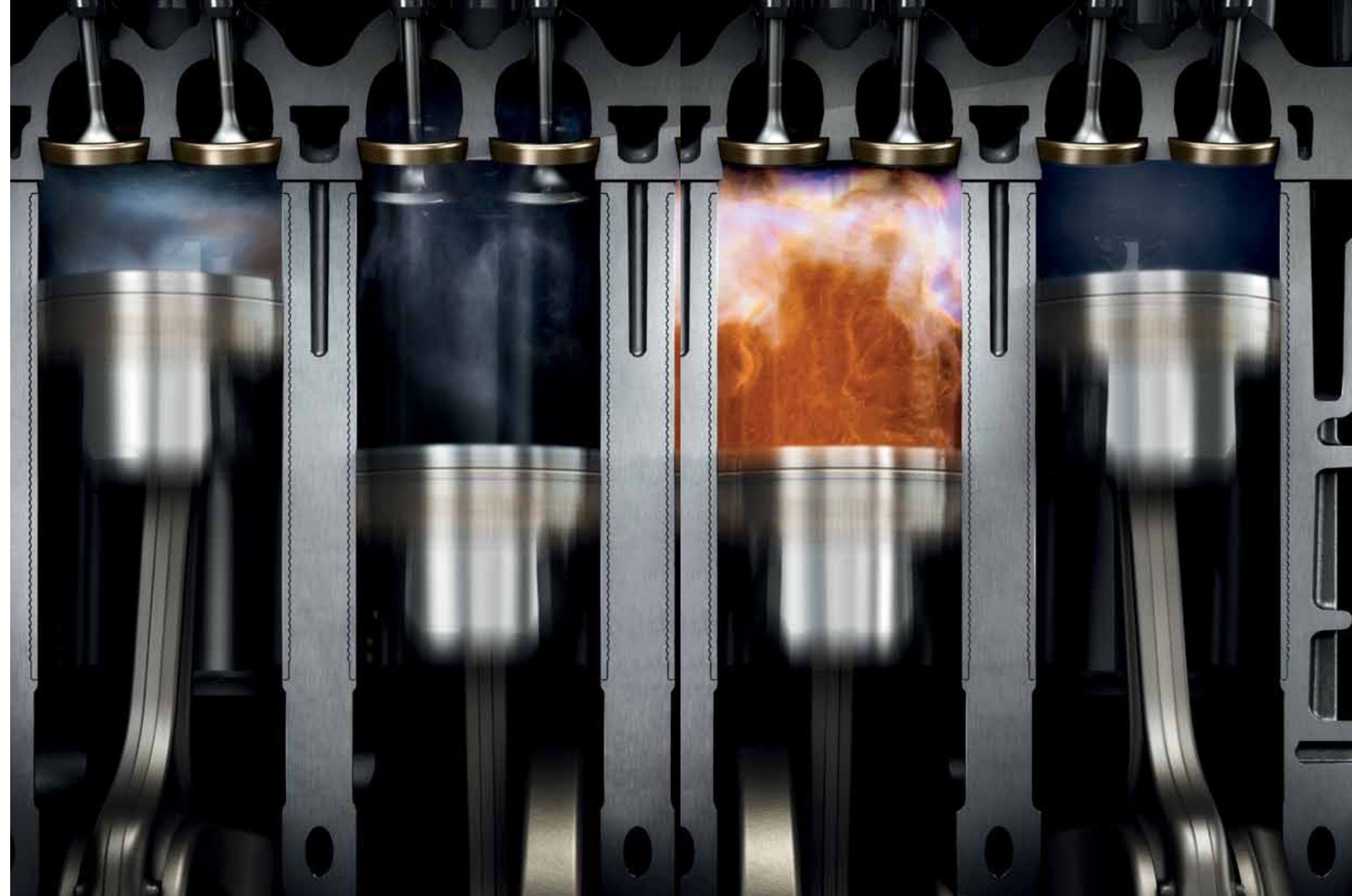
THANKS TO BLUEMOTION TECHNOLOGY IN EVERY
NEW GOLF, THE AIR IS A LITTLE CLEANER.

Think Blue. That is the Volkswagen approach to ecological sustainability. Essentially, Think Blue means making fuel-saving ideas and innovations accessible to as many people as possible. But what does it mean in concrete terms? It means setting new standards for fuel consumption and emissions, as demonstrated by the new Golf. An intelligent choice of materials enables a weight reduction of up to 100kg over its predecessor, considerably reducing fuel consumption. In addition, every engine is equipped with the efficient Start/Stop function, battery regeneration (recuperation – energy recovery during braking) and visual gear change recommendation for improved fuel consumption all as standard. With the new Golf, economical, environmentally conscious driving is a matter of course.

Model shown is new Golf GT with optional 18" 'Serron' alloy wheels, Bi-xenon headlights and metallic paint.

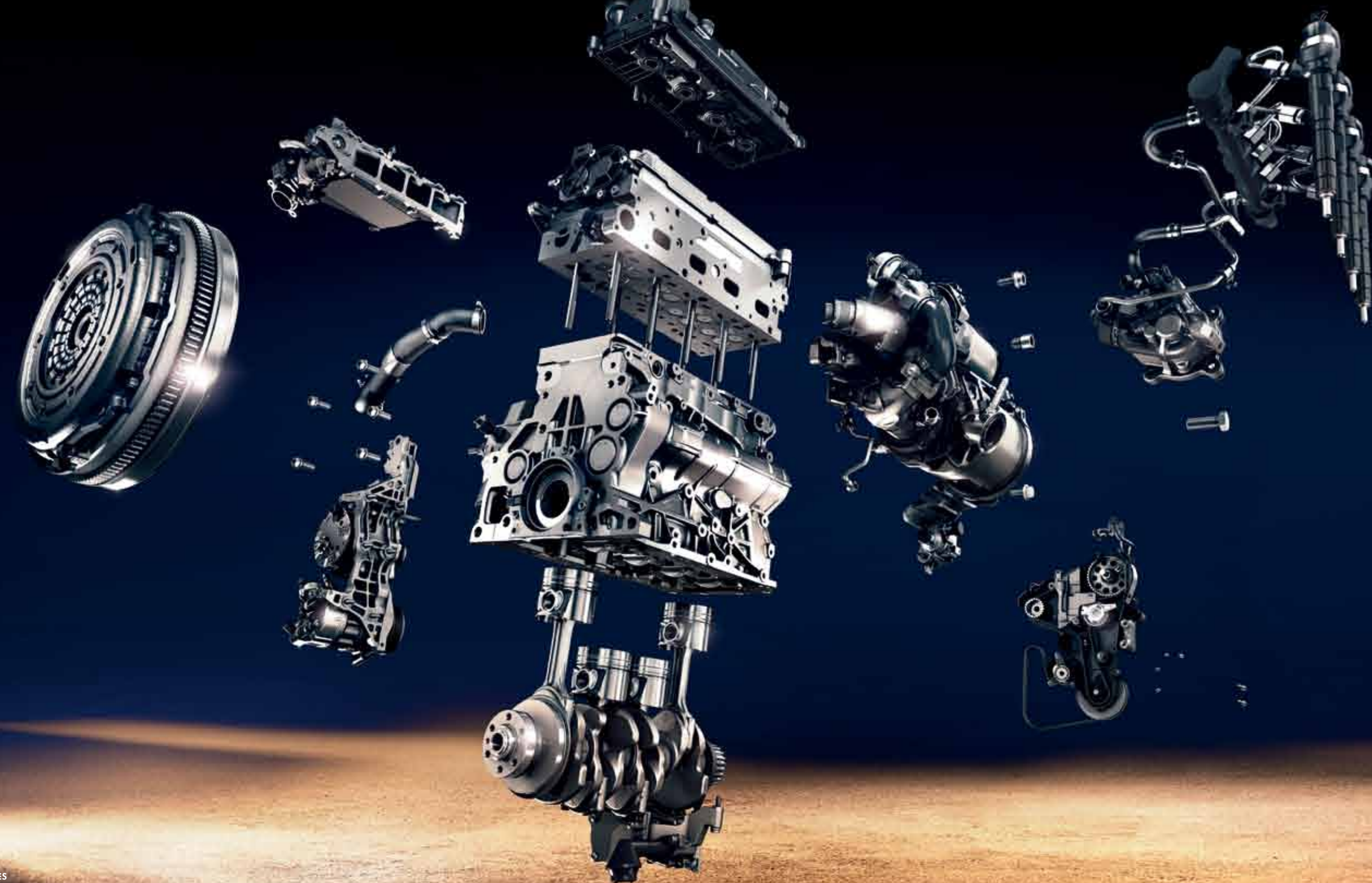
80% OF **PEOPLE** PREDOMINANTLY
BREATHE THROUGH JUST ONE
NOSTRIL IN ORDER TO SAVE ENERGY.

STATE-OF-THE-ART ROLE MODEL: THE ACT (ACTIVE CYLINDER TECHNOLOGY) CAN TEMPORARILY DEACTIVATE TWO CYLINDERS, SO THAT ONLY THE ENERGY TRULY NEEDED IS CONSUMED.



TSI
BLUEMOTION
TECHNOLOGY

The introduction of ACT (Active Cylinder Technology) is a completely new feature in the new Golf. When driving with an engine speed of between 1,000 and 4,000rpm and at speeds of up to approximately 80mph, where the law permits, two of the four cylinders can be completely, and imperceptibly deactivated, regardless of the gear you are in. This optimises the engine's efficiency and can ultimately reduce fuel consumption and CO₂ emissions by up to 9g/km, depending on the driving situation. ACT (Active Cylinder Technology) is only available with the 1.4 litre TSI ACT 140 PS engine.



A HUMAN **HEART** WEIGHS
APPROXIMATELY 0.5% OF THE AVERAGE
BODY WEIGHT. BY AGE 80 IT WILL
HAVE BEAT AROUND 3 BILLION TIMES.

LIGHTER, MORE COMPACT, MORE EFFICIENT: THE NEW
GENERATION OF TDI DIESEL AND TSI PETROL ENGINES.

The engines in the new Golf provide the driving force behind 'Think Blue'. Thanks to their sophisticated, lightweight construction and BlueMotion Technology, each of these highly efficient, economical, low emission engines sets a benchmark in sustainable motoring.

02



01 TDI diesel engines: turbocharging combined with common rail direct injection technology ensures diesel engines are economical, powerful and surprisingly smooth. Choose from two diesel variants: the economical 1.6 litre 105 PS returning 74.3mpg on the Combined fuel cycle* with 99g/km CO₂ emissions and VED band A; or the powerful 2.0 litre 150 PS returning 68.9mpg on the Combined fuel cycle* with 106g/km CO₂ emissions and VED band B.

02 TSI petrol engines: a combination of downsizing, turbocharging and direct injection technology delivers maximum torque at low engine speeds, reducing fuel consumption and noise levels, while ensuring consistent power. Choose from two 1.2 litre or two 1.4 litre TSI variants. The 1.2 litre units: the 1.2 litre 85 PS returning 57.6mpg on the Combined fuel cycle* with 113g/km CO₂ emissions and VED band C; or the 1.2 litre 105 PS returning 57.6mpg on the Combined fuel cycle* with 114g/km CO₂ emissions and VED band C. The 1.4 litre units: the 1.4 litre 122 PS returning 54.3mpg on the Combined fuel cycle* with 120g/km CO₂ emissions and VED band C; or the 1.4 litre 140 PS returning 60.1mpg on the Combined fuel cycle* with 109g/km CO₂ emissions and VED band B.

* Please see pages 54-55 for CO₂ emissions and fuel consumption figures.

The **dual-clutch direct shift gearbox (DSG)** shifts smoothly and imperceptibly into the pre-selected next gear within a few hundredths of a second, without disrupting traction. When used in conjunction with a diesel engine, the freewheel function temporarily declutches the engine when the driver takes his or her foot off the accelerator, saving up to 0.5 litres of fuel over 62 miles. To adjust the gearbox to your personal driving style, choose from Sport, Comfort or Normal settings. Eco mode allows you to drive more economically, while Sport mode ensures a more dynamic drive. When used in conjunction with the optional Adaptive Chassis Control (ACC), damping control is also adjusted automatically, enabling you to select Comfort for a smoother driving experience. The Individual mode allows you to set your own parameters such as drive, steering, ADC (Automatic Distance Control), dynamic corner lighting and more.



Model shown is new Golf GT with optional metallic paint.



PRECRASH PREVENTIVE OCCUPANT PROTECTION

This is a proactive passenger safety system that identifies a critical driving situation and automatically closes the electric windows and optional panoramic sunroof, as well as tensioning the front seat belts as a precautionary measure. Standard on SE and GT and optional on S models.

TRAFFIC SIGN DISPLAY

Traffic Sign display uses a camera to detect speed restrictions and warning signs on the road ahead, which are then displayed to the driver. Standard on GT and optional on SE models. Traffic Sign display is included in navigation systems and part of the Lane Assist option.

LANE ASSIST

Lane Assist is a camera controlled warning system that warns the driver via an audible warning and steering wheel vibration if the vehicle is about to leave its chosen lane unintentionally. This also includes High Beam Assist and Traffic Sign display. Optional on SE and GT models.

ADC (AUTOMATIC DISTANCE CONTROL)

ADC (Automatic Distance Control), including Front Assist radar sensor controlled distance monitoring system, City emergency braking system, cruise control and speed limiter offers you intelligent control of your driving speed by automatically adjusting acceleration and braking. Whether around town or on the motorway, the system will adjust your speed to that of the vehicle in front, keep your specified distance, warn if you are approaching too fast and, in an emergency situation, generate enough braking force to reduce the severity of a collision or even prevent the collision entirely. Standard on SE and GT models.

AUTOMATIC POST-COLLISION BRAKING SYSTEM

Supported by the airbag sensors, the Automatic Post-Collision Braking System automatically initiates braking after the vehicle suffers a collision, and brakes for as long as necessary to reduce the speed of the vehicle to 6mph in order to prevent or minimise the severity of subsequent collisions. Standard on all models.

Model shown is new Golf GT with optional 18" 'Serron' alloy wheels, panoramic sunroof and metallic paint.



THE HUMAN EYE TAKES ABOUT 35 MINUTES TO ADJUST FULLY TO THE **DARK.**

THE NEW GOLF'S INNOVATIVE LIGHTING SYSTEMS ADJUST TO THE AMBIENT CONDITIONS AND THE ROAD SITUATION WITHIN A FRACTION OF A SECOND, ENSURING OPTIMUM ROAD ILLUMINATION.



One of the new technologies available on the new Golf is the optional **High Beam Assist** ingeniously senses the lights from oncoming vehicles and automatically switches between dipped and main beam accordingly. It also senses vehicles you are approaching from the rear and ensures your main beam is dipped in order to avoid dazzling the vehicle in front. Along with optional **Bi-xenon headlights***, a defining characteristic of the new Golf, optimum visibility is ensured. Optional on SE and GT models.

* Please note, this option does not include LED daytime running lights.

01 The **rear-view camera**, integrated behind the Volkswagen badge on the rear tailgate, displays the area behind your vehicle on the screen of the vehicle's audio system, helping you to manoeuvre into tight spaces quickly and easily. Auxiliary lines help you navigate safely into parking spaces, and thanks to the high resolution display, even small obstacles such as kerbs are clearly visible. Optional on all models.

02 **Front and rear parking sensors** assist parking manoeuvres by emitting both audible and visual signals, alerting the driver to any obstacles in the way. The closer you are to an obstacle the faster the sound frequency, while an optical parking display indicates your position in relation to obstacles on the screen of the vehicle's audio system. Standard on GT and optional on S and SE models.

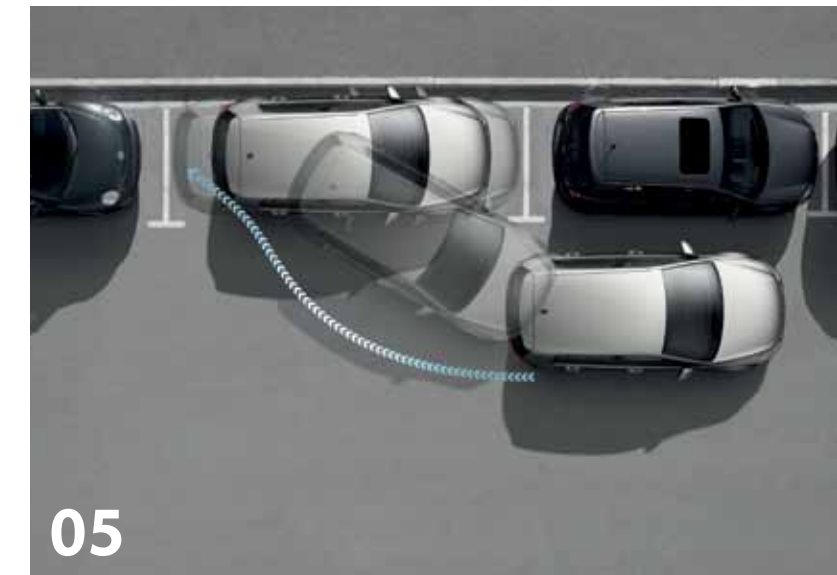
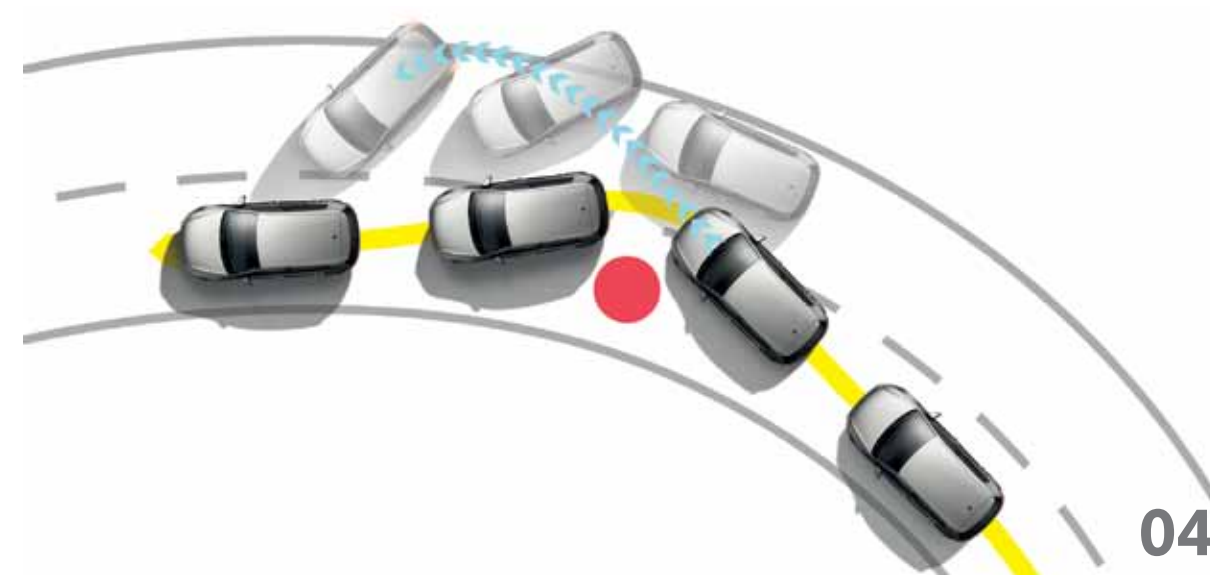
03 **Cruise control** with speed limiter, can be set at speeds of over 19mph to maintain a constant speed. Once set to your desired speed, you can focus on the road ahead, creating a more relaxed drive. Standard on SE and GT and optional on S.

04 The **Electronic Stabilisation Programme (ESP)** utilises sensors to detect critical situations at an early stage, reacting within milliseconds by controlling the speed of individual wheels, helping to bring the vehicle under control. Standard on all models.

05 The **Park Assist** system not only makes parallel parking easier, but also helps you reverse park into a space at 90 degrees to the kerb. Using ultrasonic parking sensors, Park Assist will detect a parking space large enough for either bay or parallel parking. Once the vehicle is in reverse, all the driver has to do is operate the accelerator and brake, and keep a lookout, while the new Golf steers itself into its chosen space. Optional on all models.

06 **Front fog lights** include static cornering function, which illuminates when indicating or turning at low speeds. It adds a great look to the front of the car and provides additional safety in poor driving conditions. Standard on GT and optional on S and SE models.

07 The **comprehensive airbag system** includes curtain airbags for front and rear passengers, front seat side impact airbags, driver's and front passenger's airbags with passenger's airbag deactivation switch and a driver's knee airbag. Standard on all models. Side airbags and seat belt tensioners for rear passengers are available as an option on all 5-door models.



A PERSON CAN FOCUS ON
SOMETHING FOR AROUND 20 MINUTES
BEFORE LOSING
CONCENTRATION.



A tightly held steering wheel and erratic steering movements are the first signs of driver fatigue. If several of these signs appear one after the other, the **Driver Alert system** recommends taking a break via visual and acoustic signals, helping to keep you safe on long journeys. Standard on SE and GT and optional on S models.

**ON AVERAGE, DRIVERS GET DISTRACTED
10 TIMES PER HOUR
IN TRAFFIC.**

WHETHER IT'S A BRIEF MOMENT OF INATTENTION OR ON A LONG JOURNEY WITH POOR VISIBILITY, IT'S EASY TO GET DISTRACTED WHILE DRIVING. TO HELP KEEP YOU SAFE AND PROVIDE SUPPORT IN CRITICAL SITUATIONS, A NUMBER OF DRIVER ASSISTANCE SYSTEMS CONTINUALLY ANALYSE YOUR JOURNEY AND INTERVENE WHERE NECESSARY.



Model shown is new Golf GT with optional Bi-xenon headlights and metallic paint.



01

Interior shown is S.



01

Interior shown is SE.

01 The **Composition Media system** is equipped with a 5.8 inch colour touch-screen, DAB digital radio receiver, glovebox-mounted single CD player, MDI (Multi Device Interface) with iPod connection cable and SD card reader. It facilitates music playback from MP3, WMA and AAC files and features title and compatible cover art display, 8 speakers front and rear, 4 x 20 watt output, a car menu and Eco HMI. Standard on S and SE models.

02 The **Discover Navigation touch-screen navigation/radio system** builds upon the impressive Composition Media system, but with additional features enabling you to easily manage not only your music, but also navigation data, and a broad range of vehicle information. The system offers preloaded European navigation data, 2D/2.5D map view, three calculated route choices (Fast, Short and Eco), dynamic navigation based on TMC+, branded points of interest and Traffic Sign display. It is also equipped with a proximity sensor that recognises in advance your intention to touch the screen and automatically adjusts the display mode. Standard on GT and optional on SE models.



02



02

Interiors shown are GT.

03 Leading the way to the future: The **Discover Navigation Pro touch-screen navigation/DVD radio system with voice control** represents the latest generation of infotainment systems and is as intuitive and simple to use as a smartphone or tablet. It features a large 8 inch colour touch-screen for navigation, DVD, CD and radio functions; DAB digital radio, 64 GB SSD hard drive, preloaded European navigation data, 3D map view, three calculated route choices (Fast, Short and Eco), dynamic navigation based on TMC+, branded points of interest, Traffic Sign display, photo display from JPEG and PNG files and two SD card readers. As well as responding to spoken voice commands, it is also equipped with a proximity sensor that recognises in advance your intention to touch the screen and automatically adjusts the display mode to make it easier to use. Optional on SE and GT models. Interior shown is GT featuring optional climate control 2Zone electronic air conditioning.



03

01 The manual **air conditioning system** ensures a pleasant cabin temperature throughout, with the set temperature reached quickly and efficiently and automatically regulated. Standard on all models.

02 Climate control **2Zone electronic air conditioning** with automatic air recirculation features dual zone temperature control for the driver and front passenger, allowing each to select their individual preferred temperature. A sensor monitors the outside air quality and if necessary automatically activates the air recirculation function. The air conditioning also cools the glovebox. Optional on SE and GT models.

03 The **headlight cleaning system** is part of the Winter pack, which also includes heated front seats, heated windscreen washer jets and a low washer fluid warning light. Optional on all models.

04 **Heat insulating rear tinted glass** from the B pillar backwards absorbs 65% of light, helping to reduce exposure to the sun's rays whilst giving your new Golf a sporty look. Standard on GT and optional on SE models. Model shown is SE with optional 17" 'Madrid' alloy wheels, heat insulating rear tinted glass and metallic paint.



04

01 ACC (Adaptive Chassis Control) offers you a choice of three settings: Sport, Comfort or Normal. At the touch of a button, depending on your choice, the system adjusts the damping, enabling you to adapt your new Golf to suit the road and your driving style. Optional on SE and GT models.

02 Ambient lighting creates a pleasant interior atmosphere and enhances the sense of spaciousness. Lights in the front centre armrest, light strips below the trim in front doors and warning lights in the front doors form the luxurious feel. Standard on GT models.

03 The Convenience pack includes an automatic dimming interior rear-view mirror, automatic headlights on with coming/leaving home lighting function, front footwell illumination and rain sensor. Optional on S and standard on SE and GT models.

04 The leather trimmed three-spoke multifunction steering wheel enables you to change gears via the paddle shift (DSG only) and control such functions as ADC (Automatic Distance Control), cruise control, radio, phone and the multifunction display without taking your hands off the wheel. Optional on S and standard on SE and GT models. Paddle shift is standard on GT and optional on SE models.

05 The Mirror pack includes electrically foldable door mirrors with puddle lights, and reverse activated kerb-view adjustment on the passenger's door mirror. Optional on S and SE and standard on GT models.

06 Newly designed remote folding keys for the central locking enable you to open the doors at the touch of a button. Standard on all models.

01



02



03



04



05



06

Interior shown is new Golf GT DSG with optional Discover Navigation Pro touch-screen navigation/DVD radio system, 2Zone electronic climate control, 'Vienna' leather upholstery and metallic paint.

PEOPLE PERCEIVE COLOURS
NOT JUST WITH THEIR EYES,
BUT ALSO WITH THEIR **SKIN.**



Model shown is new Golf SE with optional 17" 'Madrid' alloy wheels and metallic paint.



Non-Metallic*
Pure White
0Q



Non-Metallic
Urano Grey
5K



Non-Metallic
Black
A1



Metallic*
Pacific Blue
D5



Metallic*
Tungsten Silver
K5



Metallic*
Limestone Grey
Z1



Non-Metallic
Tornado Red
G2



Metallic*
Sunset Red
6K



Metallic*
Reflex Silver
8E



Metallic*
Night Blue
Z2



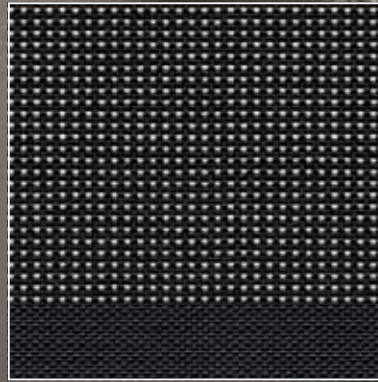
Pearl Effect*
Deep Black
2T



Premium Paint*
Oryx White
0R

* Optional at extra cost. Please note: The print processes do not allow exact reproduction of the paint colours.

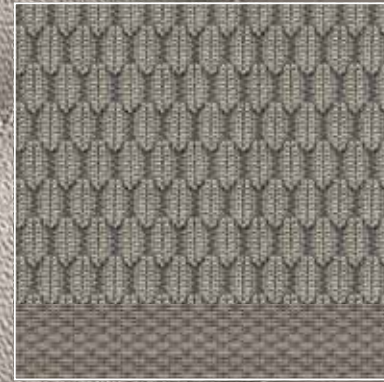
01



02



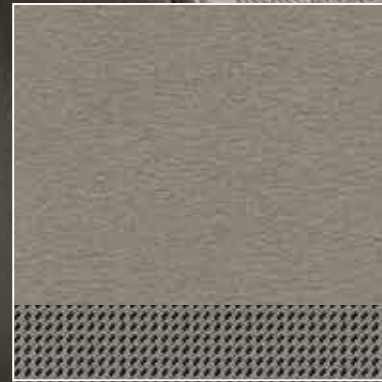
03



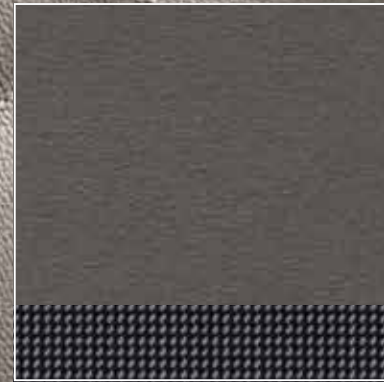
04



05



06



07



08



09



HUMAN EMBRYOS DEVELOP A SENSE OF TOUCH IN THE SEVENTH WEEK.

ANTICIPATING THE NEW GOLF ALREADY? THE INTERIOR IS DISTINGUISHED BY FINE MATERIALS AND OUTSTANDING WORKMANSHIP.

Standard on S models.

01 'Salt' cloth. **Titan Black, TW**

Standard on SE models.

02 'Zoom/Micro' cloth. **Titan Black, TW**

03 'Zoom/Micro' cloth. **Shetland, XW**

Standard on GT models.

04 Alcantara seat centre section and 'Global' cloth side bolsters. **Titan Black/Quartz, TW**

05 Alcantara seat centre section and 'Global' cloth side bolsters. **Shetland/Shetland, XW**

06 Alcantara seat centre section and 'Global' cloth side bolsters. **Quartz/Quartz, JW**

Optional leather upholstery on SE and GT models.

07 'Vienna' leather*. **Black, TW**

08 'Vienna' leather*. **Shetland, XW**

09 'Vienna' leather*. **Marrakesh, YW**

* Optional at extra cost. Some parts of leather interior will contain artificial leather.
Please note: The print processes do not allow exact reproduction of the upholstery colours.

COMBINATIONS.

	Carpet	Dashboard	Pure White 0Q Non-Metallic*	Urano Grey 5K Non-Metallic	Black A1 Non-Metallic	Tornado Red G2 Non-Metallic	Sunset Red 6K Metallic*	Reflex Silver 8E Metallic*	Pacific Blue D5 Metallic*	Tungsten Silver K5 Metallic*	Limestone Grey Z1 Metallic*	Night Blue Z2 Metallic*	Deep Black 2T Pearl Effect*	Oryx White 0R Premium Paint*
'Salt' cloth														
Standard on S models														
Titan Black (TW)	Black	Titan Black/Titan Black	●	●	●	●	●	●	●	●	●	●	●	-
'Zoom/Micro' cloth														
Standard on SE models														
Titan Black (TW)	Black	Titan Black/Titan Black	●	●	●	●	●	●	●	●	●	●	●	-
Shetland (XW)	Black	Titan Black/Shetland	●	●	●	●	●	●	●	●	●	●	●	-
Alcantara seat centre section and 'Global' cloth side bolsters														
Standard on GT models														
Titan Black/Quartz (TW)	Black	Titan Black/Titan Black	●	●	●	●	●	●	●	●	●	●	●	●
Shetland/Shetland (XW)	Black	Titan Black/Shetland	●	●	●	●	●	●	●	●	●	●	●	●
Quartz/Quartz (JW)	Black	Titan Black/Quartz	●	●	●	●	●	●	●	●	●	●	●	●
'Vienna' leather*†														
Optional on SE models														
Black (TW)	Black	Titan Black/Titan Black	○	○	○	○	○	○	○	○	○	○	○	-
Shetland (XW)	Black	Titan Black/Shetland	○	○	○	○	○	○	○	○	○	○	○	-
Marrakesh (YW)	Black	Titan Black/Titan Black	○	○	○	-	○	○	○	○	○	○	○	-
'Vienna' leather*†														
Optional on GT models														
Black (TW)	Black	Titan Black/Titan Black	○	○	○	○	○	○	○	○	○	○	○	○
Shetland (XW)	Black	Titan Black/Shetland	○	○	○	○	○	○	○	○	○	○	○	○
Marrakesh (YW)	Black	Titan Black/Titan Black	○	○	○	-	○	○	○	○	○	○	○	○

* Pure White non-metallic, metallic, pearl effect and premium paints, and leather upholstery are optional at extra cost.

† Some parts of leather interior will contain artificial leather.

● Standard. ○ Optional at extra cost. - Not available.

TECHNICAL SPECIFICATIONS.

	S	S	S, SE	GT	S, SE[†]	SE, GT
Engine	1.2 ltr TSI 85 PS	1.2 ltr TSI 105 PS	1.4 ltr TSI 122 PS	1.4 ltr TSI ACT 140 PS	1.6 ltr TDI 105 PS	2.0 ltr TDI 150 PS
Engine type	4 cylinder petrol	4 cylinder petrol	4 cylinder petrol	4 cylinder petrol	4 cylinder diesel	4 cylinder diesel
Cubic capacity, ltrs/cc	1.2/1197	1.2/1197	1.4/1390	1.4/1395	1.6/1598	2.0/1968
Max. output, PS ⁽⁰¹⁾ /kW	85/63	105/77	122/90	140/103	105/77	150/110
at rpm	4300-5300	5000	5000	4500-6000	3000-4000	3500-4000
Max. torque, lbs.ft/Nm	118/160	129/175	148/200	184/250	184/250	236/320
at rpm	1400-3500	1550-4100	1800-4000	1500-3500	1500-2750	1750-3000
Gearbox	5-spd manual	6-spd manual	6-spd manual	6-spd manual	5-spd manual	6-spd manual
	–	7-spd auto DSG	7-spd auto DSG	7-spd auto DSG	7-spd auto DSG [†]	6-spd auto DSG

Weights, kgs

Manual gearbox:						
Unladen weight ⁽⁰²⁾	1205	1210	1225	1270	1295	1354
Gross vehicle weight	1720	1720	1720	1780	1800	1860
Payload ⁽⁰²⁾	590	585	570	585	580	581
Axle load limit: Front	910	920	920	940	1010	1030
Rear	860	850	850	890	840	880
Automatic DSG gearbox:						
Unladen weight ⁽⁰²⁾	–	1229	1249	1290	1313	1375
Gross vehicle weight	–	1730	1750	1800	1810	1880
Payload ⁽⁰²⁾	–	576	576	585	572	580
Axle load limit: Front	–	930	950	960	1020	1050
Rear	–	850	850	890	840	880

Trailer load limits, kgs ⁽⁰³⁾

Braked 12% incline:						
Manual gearbox	1100	1300	1400	1500	1500	1600
Automatic DSG gearbox	–	1300	1700	1500	1500	1600
Unbraked:						
Manual gearbox	600	600	610	630	640	670
Automatic DSG gearbox	–	610	620	640	650	680
Towbar load limit	80	TBA	80	80	80	80
Max. roof load	75	TBA	75	75	75	75

[†] Seven speed automatic gearbox only available on SE models.

	S	S	S, SE	GT	S, SE[†]	SE, GT
Performance	1.2 ltr TSI 85 PS	1.2 ltr TSI 105 PS	1.4 ltr TSI 122 PS	1.4 ltr TSI ACT 140 PS	1.6 ltr TDI 105 PS	2.0 ltr TDI 150 PS
Top speed, mph (km/h), where the law permits						
Manual gearbox	111 (179)	119 (192)	126 (203)	131 (212)	119 (192)	134 (216)
Automatic DSG gearbox	–	119 (192)	126 (203)	131 (212)	119 (192)	131 (212)
Acceleration, secs 0 – 62mph						
Manual gearbox	11.9	10.2	9.3	8.4	10.7	8.6
Automatic DSG gearbox	–	10.2	9.3	8.4	10.7	8.6
ABI insurance group, 1 - 50	7E	11E	14E, 14E	17E	12E, 13E	18E, 19E

Environmental information

Fuel grade, minimum	Unleaded, 95 RON	Unleaded, 95 RON	Unleaded, 95 RON	Unleaded, 95 RON	Diesel ⁽⁰⁴⁾	Diesel ⁽⁰⁴⁾
Fuel tank capacity, galls/ltrs ⁽⁰⁵⁾	11/50	11/50	11/50	11/50	11/50	11/50
Official fuel consumption						
manual gearbox,						
mpg/ltr per 100km ⁽⁰⁶⁾						
Urban	47.9/5.9	47.9/5.9	42.8/6.6 [41.5/6.8]	48.7/5.8 [47.9/5.9]	61.4/4.6	56.5/5.0
Extra-urban	67.3/4.2	65.7/4.3	65.7/4.3 [64.2/4.4]	67.3/4.2 [65.7/4.3]	85.6/3.3	78.5/3.6
Combined	57.6/4.9	57.6/4.9	54.3/5.2 [53.3/5.3]	60.1/4.7 [58.9/4.8]	74.3/3.8	68.9/4.1
Official fuel consumption						
automatic DSG gearbox,						
mpg/ltr per 100km ⁽⁰⁶⁾						
Urban	–	[48.7/5.8]	[45.6/6.2]	[48.7/5.8]	[61.4/4.6]	[52.3/5.4]
Extra-urban	–	[62.8/4.5]	[65.7/4.3]	[68.9/4.1]	[80.7/3.5]	[68.9/4.1]
Combined	–	[56.5/5.0]	[56.5/5.0]	[60.1/4.7]	[72.4/3.9]	[62.8/4.5]
Official CO ₂ emission, g/km						
Manual gearbox ⁽⁰⁷⁾	113	114	120 [123]	109 [112]	99	106
Automatic DSG gearbox ⁽⁰⁷⁾	–	[115]	[116]	[110]	[102]	[119]
Emission class	EURO 5	EURO 5	EURO 5	EURO 5	EURO 5	EURO 5
Noise, dB						
Manual gearbox	TBA	TBA	TBA	TBA	TBA	TBA
Automatic DSG gearbox	–	[TBA]	[TBA]	[TBA]	[TBA]	[TBA]

Figures in [] are for 5-door models only.

TECHNOLOGY.

Technical specification notes

- 01) The maximum power output figures are quoted in PS (or Pferdestärke, which is the metric equivalent of horsepower). To convert from metric to imperial horsepower, divide the PS figure by 1.0139.
- 02) Figures are calculated in accordance with manufacturer's criteria. The individual unladen weight depends on the specification of the vehicle, this then reduces the possible payload accordingly. The unladen weight and payload both include the fuel tank 90% full, driver (68kg) and luggage (7kg) in line with EU directive 95/48. Unladen weight shown refers to 3-door models. The unladen weight of 5-door models will increase by 30kg.
- 03) With increasing altitude the engine performance diminishes. From 1,000m above sea level and for every 1,000m thereafter 10% of the vehicle/trailer weight (trailer weight + gross vehicle weight) must be deducted.
- 04) The use of 100% RME and FAME (bio diesel) is not possible. Forecourt diesel with up to 7% bio diesel content, adhering to standard BS EN 590, can be used in diesel engines. The use of ethanol in forecourt petrol meeting BS EN 228 is allowable.
- 05) The size of the fuel tank is approximate and therefore it may be possible to add a greater amount of fuel than the size of the tank specified, due to the space in the filler neck.
- 06) Official fuel consumption according to EU Directive 99/94. The consumption calculation according to 1999/100/EC is based on the actual unladen weight of the vehicle. Additional specifications can lead to a higher weight class and hence to consumption figures of this higher weight class. The driving style, road and traffic conditions, environmental influences and vehicle condition can in practice lead to consumption figures, which may differ from those calculated with this standard.
- 07) The weight of a vehicle will influence the level of CO₂ emission it produces; as a result, vehicles with higher levels of specification and factory-fitted options may emit higher levels of CO₂.

Transmission

- Electronic differential lock, combined with a hydraulically operated single-plate dry clutch with asbestos-free lining via a six or seven speed automatic DSG gearbox
- Front wheel drive through asbestos-free single-plate dry clutch. Hydraulic clutch-mechanism. Five or six speed manual, six or seven speed automatic DSG gearbox with double joint half axles (wet clutch on six speed DSG models)

Running gear

- ESP (Electronic Stabilisation Programme) including EDL (Electronic Differential Lock), ASR (Traction Control) and Countersteer Support
- Front suspension through coil springs with telescopic shock absorbers, all elements integrated in chassis legs
- Rear suspension with gas pressure shock absorbers and separate springs
- Twist beam rear axle (1.2 litre TSI 85 PS, 1.2 litre TSI 105 PS, 1.6 litre TDI 105 PS)
- Multilink rear axle (1.4 litre TSI 122 PS, 1.4 litre TSI ACT 140PS, 2.0 litre TDI 150 PS)
- Wheel control: front through chassis legs and (lower) triangular wishbones (directionally stabilising steering roll radius)
- Wheel control: rear through four-link suspension with independent wheel suspension
- Front and rear anti-roll bar

Steering

- Electro-mechanical steering rack
- Collapsible, height and lengthways adjustable safety steering column

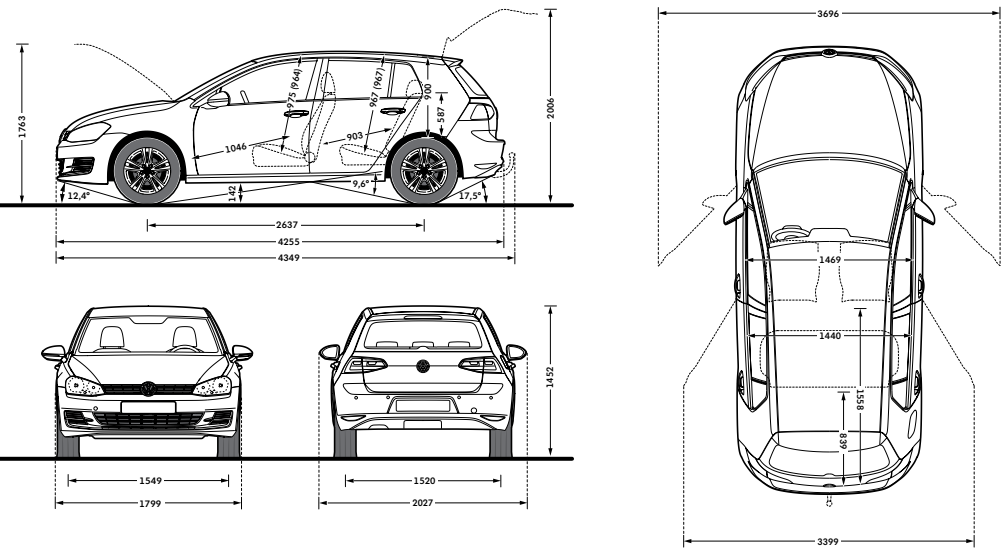
Brakes

- Electronically controlled Anti-lock Braking System (ABS) with Electronic Brake-pressure Distribution (EBD)
- Diagonal twin-circuit brake system with ventilated front disc brakes and rear disc brakes
- Asbestos-free brake pad
- HBA (Hydraulic Brake Assist)

Engines

- Front transverse-installed engine
- 1.2 litre/85 PS⁽⁰¹⁾ (63 kW) petrol engine: EU5 emissions standard, four cylinder in-line direct injection engine, with two valves per cylinder. Fitted with a turbocharger module with electric boost pressure regulation. Available with a five speed manual transmission
- 1.2 litre/105 PS⁽⁰¹⁾ (77 kW) petrol engine: EU5 emissions standard, four cylinder in-line direct injection engine, two valves per cylinder and turbocharger module with electric boost pressure regulation. Available with a six speed manual or a seven speed automatic DSG transmission
- 1.4 litre/122 PS⁽⁰¹⁾ (90 kW) petrol engine: EU5 emissions standard, four cylinder in-line direct injection turbocharged engine, with four valves per cylinder. Fitted with a turbocharger. Available with a six speed manual or a seven speed automatic DSG transmission
- 1.4 litre/140 PS⁽⁰¹⁾ (103 kW) petrol engine: Available with a six speed manual or a seven speed automatic DSG transmission
- 1.6 litre/105 PS⁽⁰¹⁾ (77 kW) common rail diesel engine: EU5 emissions standard, four cylinder in-line common rail diesel engine, with four valves per cylinder. Fitted with a turbocharger and a DPF (diesel particulate filter). Available with a five speed manual or a seven speed automatic DSG transmission
- 2.0 litre/150 PS⁽⁰¹⁾ (110 kW) common rail diesel engine: EU5 emissions standard, four cylinder in-line common rail diesel engine, with four valves per cylinder. Fitted with a turbocharger and a DPF (diesel particulate filter). Available with a six speed manual or a six speed automatic DSG transmission

DIMENSIONS.



On illustrations, where arrows and figures are shown inside of the vehicle, the measurements are for interior dimensions. Where arrows and figures are shown outside of the vehicle, the measurements are for exterior dimensions.

Exterior dimensions

Length, mm	4255
Width – excl. door mirrors – 3-door/5-door, mm	TBA/1799
Width – opened front doors – 3-door/5-door, mm	TBA/3696
Height – mm	1452
Height – opened bonnet/floor, mm	1763
Height – opened tailgate/floor, mm	2006
Wheelbase, mm	2637
Turning circle, mm	10900

Interior dimensions

Effective headroom – front, mm (with sunroof)	975 (964)
Effective headroom – rear, mm (with sunroof)	967 (967)
Elbow width, front – 3-door/5-door, mm	TBA/1469
Elbow width, rear – 3-door/5-door, mm	TBA/1440

Maximum luggage capacity, litres VDA measuring method using

200 x 100 x 50mm blocks	
With rear seats upright	380
With rear seats folded	1270

VOLKSWAGEN SERVICE.

The Volkswagen Warranty

Three-year Warranty

All Volkswagen passenger cars come with a three-year/60,000 miles warranty, which protects your car against the failure of most technical and electrical components due to manufacturing defects. This comprises a two-year manufacturer's warranty with unlimited mileage plus a further one-year/60,000 miles (whichever is soonest) Retailer Warranty*. Should the mileage exceed 60,000 miles within the first two years, the manufacturer's two-year warranty will still be valid. Full details of the three-year warranty are available from your authorised Volkswagen retailer or repairer.

* All warranty work must be completed by an authorised Volkswagen retailer or repairer.

Three-year Paint Warranty

The paintwork of the Golf is covered against manufacturing defects for a period of three years. Naturally, the Golf must be cared for in compliance with the operating instructions which will be found in your vehicle handbook. Please consult your authorised Volkswagen retailer or repairer for full warranty details.

12-year Body Protection Warranty

The internal body sections and panels of the Golf are covered against rusting through from the inside for 12 years. Naturally, the Golf must be cared for in compliance with the operating instructions. Please consult your authorised Volkswagen retailer or repairer for full warranty details.

Approved Accessories

A comprehensive range of accessories from alloy wheels to carpet mats is available to complement the factory-fitted option list. Volkswagen approved accessories purchased from and fitted by your authorised Volkswagen retailer at the point of vehicle sale will also benefit from the three-year vehicle warranty.

Extended Warranty

If you order the Volkswagen Extended Warranty as an option when buying your new Golf, then you get the 100% Volkswagen Warranty and you can continue to enjoy comprehensive Volkswagen protection against many unforeseeable repair costs. Designed to your needs, you can purchase an extra one or two year's warranty up to a maximum of five years or 90,000 miles.

Service Intervals

Volkswagen are pleased to offer you a choice on how your Golf is serviced. The appropriate selection is entirely dependent on how the car is likely to be driven and its general use. To help you identify which type of service would be most suitable, please refer to the following guide.

The Fixed Service is recommended for vehicles that will cover less than 10,000 miles in 12 months and if the vehicle is likely to be used in the following way:

- Predominantly urban driving, short journeys with frequent cold starts
- Activities regularly producing high engine loading, e.g. frequent hill climbs, driving with vehicle fully loaded and towing
- Uneconomical driving style using high rpms with heavy acceleration and heavy braking

The service intervals for the Fixed Service are as follows:

- Oil change service Every 10,000 miles/1 year (whichever is soonest)
- Interval service Every 20,000 miles/2 years (whichever is soonest)
- Inspection service Every 40,000 miles/3 years (whichever is soonest)

The Flexible Service is recommended for vehicles with a daily mileage of more than 25 miles where the vehicle is driven regularly mainly on longer distance journeys. The vehicle is driven mainly at a constant speed with minimum vehicle and engine loading, minimal towing and driven in an economical manner.

With the Flexible Service the vehicle can cover anywhere between 10,000[†] and a maximum of 18,000[†] miles or 24 months (whichever is soonest) between oil changes. Inspection service is typically in the third year of ownership and thereafter every second year, for vehicles with an approximate annual mileage of 10,000 miles.

[†] Please note that mileages are approximate as the service indicator system uses kilometres as the distance measurement. Please consult your authorised Volkswagen retailer or repairer for advice and full details.

Volkswagen Insurance[‡]

We want you to start enjoying your new car from day one and thanks to Volkswagen Insurance complimentary seven day cover, you can. Call free on 0800 316 7892 (lines are open Monday to Friday 8am – 9pm and Saturday 9am – 5pm), provide a few details and a cover note will be sent to your retailer. They will then tax your car and you can drive it away.

Visit www.insurewithvolkswagen.co.uk for details of the full range of insurance products available.

Here you can also get a quote for your annual car insurance and buy it online too. All of our insurance products are designed to ease the pain of making a claim.

[‡] Volkswagen Insurance is a trading name of Volkswagen Insurance Service (Great Britain) Limited, an appointed representative of Volkswagen Financial Services (UK) Limited, Brunswick Court, Yeomans Drive, Blakelands, Milton Keynes MK14 5LR. Registered in England number 2835230. Volkswagen Insurance is sold, underwritten and administered by Allianz Insurance plc registered in England number 84638. Registered office 57 Ladymead, Guildford, Surrey GU1 1DB. Volkswagen Financial Services (UK) Limited and Allianz Insurance plc are authorised and regulated by the Financial Services Authority. Volkswagen Financial Services (UK) Limited and Allianz Insurance plc are not part of the same corporate group.

Volkswagen Finance[±]

Volkswagen Finance specialises in providing funding solutions for Volkswagen drivers. Whether your Volkswagen is for private or business use, you can choose from a range of funding options.

- Solutions – a personal contract plan
- Hire purchase
- Lease purchase
- Finance lease
- Contract hire

With all Volkswagen Finance products you can choose a fixed-cost maintenance plan to help you budget for your servicing and maintenance costs.

No matter what finance product you choose, your local Volkswagen retailer will be able to provide you with a personalised quote that could meet your budget and vehicle needs.

[±] Volkswagen Finance is a trading name of Volkswagen Financial Services (UK) Limited. An offer of finance depends on certain conditions. Available to people over 18 in the UK only.

Volkswagen Roadside Assistance

Every new car is registered for Volkswagen Roadside Assistance for one year. This provides vehicle home and roadside recovery in the unlikely event of a breakdown in the UK and Europe (subject to conditions). Volkswagen Roadside Assistance can also be purchased for subsequent years. For full details, please contact your authorised Volkswagen retailer or repairer.

Tax Free Sales

For full details, please contact your authorised Volkswagen retailer.

CO₂ Emissions

Increased weight of a vehicle, including higher trim levels and the addition of options will have a detrimental influence on the level of fuel consumption and CO₂ emissions produced.

The CO₂ and fuel consumption figures are obtained from tests on a representative vehicle of the type, conducted and approved in accordance with Council Directive 80/1268/EEC as amended by Directive 1999/100/EC (or later) on the approximation of the laws of the member states relating to the carbon dioxide emissions and the fuel consumption of motor vehicles.

Please Note:

Some illustrations in this brochure do not necessarily reflect UK specifications and may not be available. In particular, controls and some items of equipment are positioned differently for the UK.

The specifications contained in this brochure are for information purposes only and are subject to change. If you require any specific feature, you must consult your authorised Volkswagen retailer who is regularly updated with any change in specification. Please check model availability and full specification details with your authorised Volkswagen retailer prior to ordering.

Note: we would like to advise you that telephone calls to Volkswagen Customer Care may be monitored and recorded as part of our training and quality assurance processes. All our monitoring and recording processes meet Ofcom regulations.

GOLF. DAS AUTO.

Volkswagen Information Service. Telephone 0800 333 666

Internet: www.volkswagen.co.uk

© Volkswagen Group United Kingdom Limited 2013.

Issue: 1 March 2013. Printed in UK.

PVW291NEWGF



facebook.com/VolkswagenUK



[@UKVolkswagen](https://twitter.com/@UKVolkswagen)



youtube.com/UKVolkswagen