



Das Auto.

The Golf Cabriolet



OUTSHINES EVEN THE MOST GLORIOUS SUNRISE.

CONTENTS

EXTERIOR | 04

INTERIOR | 08

GOLF CABRIOLET GTI | 12

NEW GOLF CABRIOLET R | 14

EQUIPMENT | 16

ALLOY WHEELS | 18

ENGINES AND GEARBOXES | 19

THINK BLUE | 22

SAFETY | 24

PAINT | 28

UPHOLSTERY | 30

COMBINATIONS | 31

TECHNICAL SPECIFICATION | 34

TECHNOLOGY | 36

VOLKSWAGEN SERVICE | 38



Model shown is Golf Cabriolet GT with optional Bi-xenon headlights and metallic paint.

FROM BEAUTIFUL TO BREATHTAKING IN JUST 9.5 SECONDS.

EXTERIOR

01 STANDARD | S | SE | GT | GTI | R



Model shown is Golf Cabriolet GT with optional leather upholstery and metallic paint.

- 01** The **fully automatic electric power hood** with integrated rear glass windscreen opens in just 9.5 seconds when stationary, or even at speeds of up to 18mph, for added convenience.
- 02** Optional **Bi-xenon headlights**, for dipped and main beam, include daytime running lights, automatic range adjustment and dynamic curve lighting which compensates for any change in the incline of the body, due to loading, braking or accelerating, ensuring optimum illumination of the road ahead. Headlight washers keep them free from dirt and grime, while a low washer fluid warning light reminds you when you need to add washer fluid. Image shown is Golf Cabriolet GT.
- 03** **Rear light clusters** incorporating LED technology, complement its striking rear design. LEDs not only provide a clear, bright light, but also give a more stylish look to the rear lights.
- 04** The **twin exhaust tailpipe** add charisma and presence, hinting at the sporting prowess and power beneath the bonnet.

Images shown feature optional metallic paint.



02 STANDARD | R | OPTIONAL | SE | GT | GTI



03 STANDARD | S | SE | GT | GTI | R



04 STANDARD | GT



THE SKY AT YOUR FINGERTIPS.

ENJOY THE MOST STUNNING PLACES IN THE WORLD...

In the **luxurious interior of the GT**, front sports seats with height and lumbar adjustment provide maximum support for the driver and front passenger, while optional 'Vienna' leather* upholstery, aluminium-look pedals, 'Edge' decorative inserts in the dash and door panels, and chrome-plated detailing create a sumptuous interior. Easy entry sliding seats provide access to the rear, while climate control – 2Zone electronic air conditioning with automatic air recirculation ensures a pleasant interior temperature. Thoughtful details such as storage pockets on the rear of front seats, front and rear parking sensors, a rain sensor and automatic dimming interior rear-view mirror enhance comfort and convenience.

* Some parts of leather interior will contain artificial leather.



Interior shown is Golf Cabriolet GT DSG with optional leather upholstery and metallic paint.

...IN TOTAL LUXURY AND STYLE.



01 STANDARD | SE | GT | GTI | R OPTIONAL | S

INTERIOR

- 01 The **wind deflector** protects you against air turbulence when the electric power hood is down, enhancing comfort and safety, particularly when driving on the open road.
- 02 The **50:50 split folding rear seat backrest** adds flexibility, creating space if you need to transport bulky items.
- 03 The **front centre armrest** has an integrated storage compartment ensuring important items are easily to hand and also features a useful 12V socket.
- 04 Practical **drawers under the front seats** offer additional useful storage space.
- 05 Heated front sports seats upholstered in **'Vienna' leather***, with heated side bolsters and height and lumbar adjustment, create a luxurious interior, with improved sun reflective qualities preventing the seats from heating up in high temperatures.

Images shown feature optional 'Vienna' leather upholstery and metallic paint.
* Some parts of leather interior will contain artificial leather.



02 STANDARD | S | SE | GT | GTI | R



03 STANDARD | SE | GT | GTI | R OPTIONAL | S



04 OPTIONAL | S | SE | GT | GTI | R



Interior shown is Golf Cabriolet GT with optional 'Vienna' leather upholstery.

05 STANDARD | R OPTIONAL | SE | GT | GTI

ICONIC GTI, WITH AIR TO BREATHE.



Model shown is Golf Cabriolet GTI.



Interior shown is Golf Cabriolet GTI DSG.



The **Golf Cabriolet GTI** features the iconic black honeycomb grille with red louvres and gleaming chrome 'GTI' badge. Uniquely shaped front and rear bumpers with integrated front fog lights and honeycomb front air intake complete the 'GTI' styling pack. This sporting pedigree continues with **18 inch 'Monza Shadow' alloy wheels** with a distinctive five spoke design revealing red brake calipers beneath, sports suspension lowered by approximately 22mm front and 15mm at the rear and chrome exhaust tailpipes either side of the black rear diffuser. Safe open-air motoring is paramount in the Golf Cabriolet GTI with the inclusion of XDS electronic differential lock for improved traction and handling. Classic design in combination with dynamic performance are here in the Golf Cabriolet GTI.

Inside, the Golf Cabriolet GTI builds over the well equipped GT, but with the styling that marks it out as an iconic GTI. Beneath the fully automatic electric power hood are sport seats upholstered in classic tartan 'Jacara' cloth, contrast red stitching on the distinctive leather trimmed three-spoke multifunction steering wheel with 'GTI' logo, handbrake and gear knob gaiter. Stylish chrome detailing, 'Edge' decorative inserts and carpet mats, front and rear confirms the GTI credentials.

THE NEW GOLF CABRIOLET R, AN EXHILARATING FRESH AIR DRIVE.



There's really only one word to describe **the new Golf Cabriolet R**. Fast. A combination of the latest engine technology, lowered sports suspension and aerodynamic styling ensures this is the fastest ever Golf Cabriolet. If the exterior styling gives you a hint of what is to come, the unique interior adds to the anticipation. But nothing prepares you for the drive itself. That is something you have to experience.

Its 'Gloss Black' grille and front air intake in the uniquely shaped bumper give the new Golf Cabriolet R its distinctive appearance, and the chrome 'R' badge hints at the power lurking beneath the bonnet. The XDS electronic differential lock improves traction and helps keep the **19 inch 'Talladega' alloys*** firmly on the road, while the brake calipers are painted in 'Gloss Black' and are adorned with the exclusive 'R' logo. Body-coloured widened side skirts not only enhance the new Golf Cabriolet R's aerodynamics, but also accentuate its unique 'R' sports suspension lowered by approx. 25mm, and chrome exhaust tailpipes are integrated either side of the 'Gloss Black' rear diffuser beneath the uniquely designed rear bumper.

Inside, luxurious black **'Vienna' leather† heated front sports seats with the 'R' logo** embroidered on the front head restraints add a sporty yet elegant look to the interior. Other details include the front and rear carpet mats and a luxurious leather trimmed three-spoke multifunction steering wheel with 'R' logo and contrast grey stitching, making any journey one of pure, unadulterated fun.

* Please note: 19 inch alloy wheels and tyres in lieu of tyre pressure loss indicator. † Some parts of leather interior contain artificial leather.

Model shown is new Golf Cabriolet R with optional metallic paint.

EQUIPMENT.



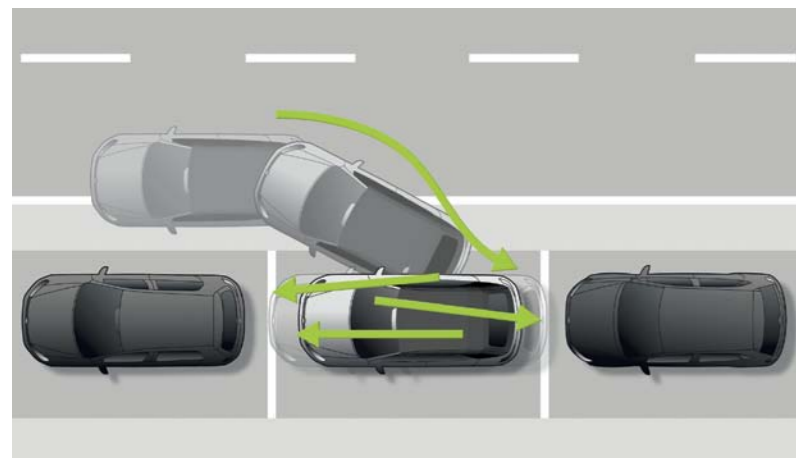
01 STANDARD | SE | GT | GTI | R



02 STANDARD | S | SE | GT | GTI | R



03 OPTIONAL | SE | GT | GTI | R



04 OPTIONAL | S | SE | GT | GTI

01 The **climate control – 2Zone electronic air conditioning system** with automatic air recirculation features separate temperature controls for both the driver and front passenger, enabling both to adjust the temperature setting according to their individual preference.

02 The **RCD 310 DAB radio/MP3 compatible CD player** features eight speakers with an output of 4 x 20 watt. It also features an AUX-in socket for connection to an external multimedia source (e.g. iPod or MP3 player).

03 A **rear-view camera**, integrated behind the Volkswagen badge on the rear boot lid of the Golf Cabriolet, provides a clear view to the rear of your vehicle, transmitting an undistorted live image to your radio or navigation system's display, enabling you to manoeuvre quickly and easily into the most difficult parking space. Available in conjunction with the optional RNS 315 touch-screen navigation/DAB radio system or RNS 510 touch-screen DVD navigation/DAB radio system. Also available as a no cost option when ordered in conjunction with the optional RCD 510 touch-screen DAB radio system*.

04 **Park Assist with front and rear parking sensors** helps you with bay parking and also parallel parking, into spaces only 1.1m longer than the vehicle, using ultrasonic and audible sensors and an optical display via the vehicle's audio system. All the driver has to do is operate the clutch, accelerator and brake pedals.

05 The stylish **multifunction leather trimmed three-spoke steering wheel** is fitted with ergonomically designed buttons, making it easy to use your vehicle's audio system and your mobile phone. When paddle shift is specified in conjunction with the DSG gearbox, it allows quick and easy gear changes without taking your hands off the steering wheel. Paddle shift is optional on GT models and standard on GTI and R models. Interior shown is Golf Cabriolet GT.

* Rear-view camera will be fitted in lieu of DAB digital radio receiver on RCD 510 touch-screen DAB radio system.



ALLOY WHEELS



01 STANDARD | S



02 STANDARD | SE



03 STANDARD | GT



04 STANDARD | GTI



05 STANDARD | R



06 OPTIONAL | R

- 01 'Atlanta'** 6½J x 16 alloy wheels with 205/55 R16 tyres add a contemporary look to the exterior of the Golf Cabriolet S. Please note, S BlueMotion Technology models feature 205/55 R16 low rolling resistance tyres as standard.
- 02 'Porto'** 7J x 17 alloy wheels with 225/45 R17 tyres emphasise the already stylish Golf Cabriolet SE model even further.
- 03 'Charleston'** 7½J x 18 alloy wheels with 225/40 R18 tyres give an individual and sporty look to the exterior of the Golf Cabriolet GT.
- 04 'Monza Shadow'** 7½J x 18 alloy wheels with 225/40 R18 tyres enhances the appearance of the sure-footed Golf Cabriolet GTI.
- 05 'Talladega'** 8J x 19 alloy wheels with 235/35 R19 tyres ensure maximum grip, while 'Gloss Black' brake calipers with 'R' logo enhance the sporty appearance of the Golf Cabriolet R.
- 06 'Talladega Black'** 8J x 19 alloy wheels with 235/35 R19 tyres add even more style and finesse to the exterior of the Golf Cabriolet R. Available as a no cost option on R models.

Please note: 19 inch alloy wheels and tyres in lieu of tyre pressure loss indicator.



ENGINES AND GEARBOXES



01 STANDARD | S | SE | GT



02 STANDARD | S | SE | GT



03 STANDARD | GTI



04 STANDARD | R



05 STANDARD | S | SE | GT | GTI



06 STANDARD | S | SE | GT | GTI | R

- 01** A combination of direct fuel injection and intelligent turbocharging technology ensures **TSI petrol engines** offer high performance, high torque and reduced fuel consumption.
- 02** **TDI diesel engines**, equipped with common rail technology, combine the advantages of high torque and pulling power with low consumption, minimal emissions and quiet performance, thanks to direct diesel injection.
- 03** A combination of direct fuel injection and intelligent turbocharging technology ensures the **2.0 litre TSI 210 PS petrol engine**, standard on GTI, delivers high performance and torque, alongside impressive fuel consumption.
- 04** Standard on R, the **2.0 litre TSI 265 PS engine** is a perfect example of TSI technology. Direct injection, downsizing and sophisticated turbocharging technology combine to produce the most powerful TSI engine ever to power a Golf Cabriolet. This engine also benefits from TSI characteristics such as excellent torque, impressive fuel consumption and reduced emissions compared to previous range-topping Volkswagens.

- 05** The five or six speed **manual gearbox** transmits engine power smoothly, with short shift distances enabling you to change gear easily and remain comfortably within the correct rev range.
- 06** The six or seven speed **dual-clutch direct shift gearbox (DSG)** shifts smoothly and imperceptibly into the next pre-selected gear within a few hundredths of a second, without disrupting traction. This enables you to change gear faster than a manual and more smoothly than a conventional automatic – making dynamic acceleration twice as much fun.



SOAKING UP THE SUN IS EASY.

Think Blue.

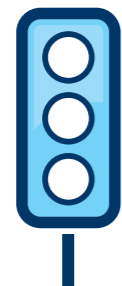
Sustainability + Ingenuity.

'Think Blue' is Volkswagen's promise to create progressive, environmentally friendly products and processes. So from our concepts to our designs, from our fabrics to our machines, from our buildings to our water supply, from our engines to the open road we can help shape a more sustainable future. We have already started by creating BlueMotion cars and efficient BlueMotion Technologies that save you money and reduce emissions.



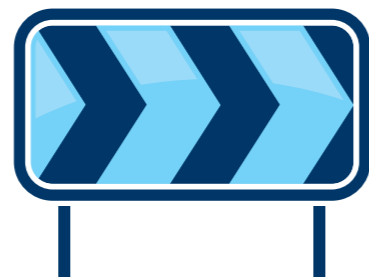
Think Blue.
Smart ideas for sustainable driving.

=



Start/Stop technology saves fuel and therefore cuts emissions by automatically switching off the engine when the car isn't in motion.

+



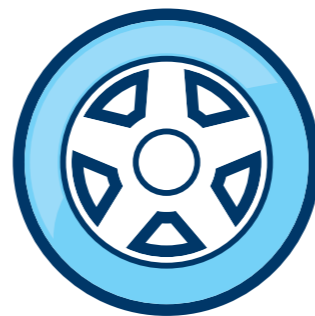
Brake energy recuperation system saves fuel by making the most of energy that's usually lost when you brake.

+



Turbocharged engines deliver more power when you need it and use less fuel when you don't.

+



Low rolling resistance tyres save you fuel by reducing the friction between the tyre and the road, meaning it takes less energy – and less fuel – to go further.



+



Purpose built BlueMotion cars. BlueMotion cars include the full range of BlueMotion Technologies as well as an aerodynamically optimised design to reduce wind resistance and increase efficiency. The ultimate way to Think Blue.



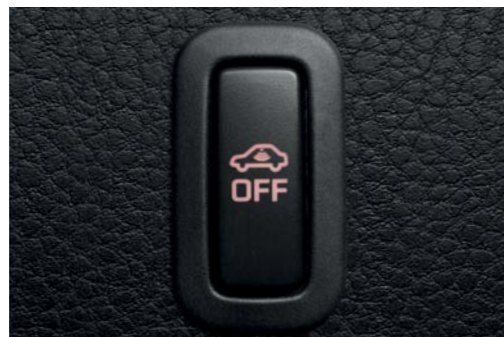
BlueMotion Technologies*

BlueMotion

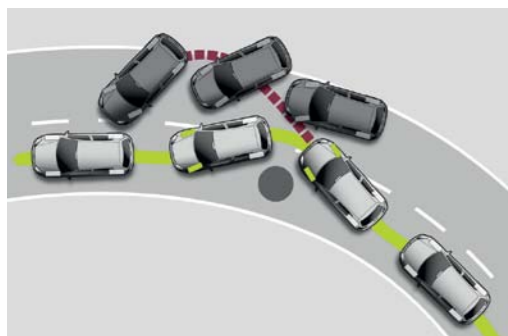
*BlueMotion Technologies are available on all Volkswagens, excluding Phaeton, and vary between models.



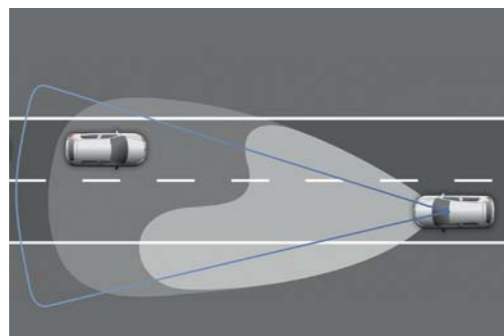
01 STANDARD | SE | GT | GTI | R OPTIONAL | S



02 STANDARD | S | SE | GT | GTI | R



03 STANDARD | S | SE | GT | GTI | R



04 STANDARD | SE | GT | GTI | R

01 Front and rear parking sensors help you park with the greatest of ease. For added convenience the process is aided by an audible warning, visual display via the radio system's screen and reverse activated kerb-view adjustment on the passenger's door mirror.

02 An alarm with interior protection uses sensors to respond to tampering on the bonnet, doors and boot lid whether the soft top is open or closed.

03 The ESC (Electronic Stability Control) recognises critical driving situations and reacts in milliseconds by targeting brake and management systems, controlling the speed of individual wheels and helping to bring the vehicle under control.

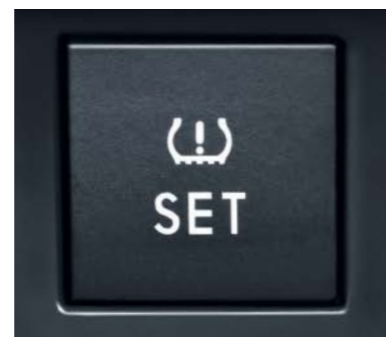
04 High Beam Assist ingeniously senses the lights from oncoming vehicles and switches between main and dipped beam accordingly. It also senses vehicles you are approaching from the rear and ensures dipped beam is selected in order not to dazzle vehicles in front.

05 The fully integrated rollover protection system is active whether the soft top roof is open or closed and operates at the slightest hint of a roll or impact. The supporting profiles extend automatically within 0.25 seconds, giving additional protection to occupants.

SAFETY



05 STANDARD | S | SE | GT | GTI | R



06 STANDARD | S | SE | GT | GTI

06 The tyre pressure loss indicator will alert you to any change in tyre pressure via a warning in the multifunction display, advising you to rectify the situation.

07 A comprehensive airbag system comprising driver's and front passenger's airbags, with a front passenger's airbag deactivation switch, front seat side impact airbags and also a driver's knee airbag for added protection particularly in the event of a head-on collision.





ABLAZE WITH COLOUR.

PAINT

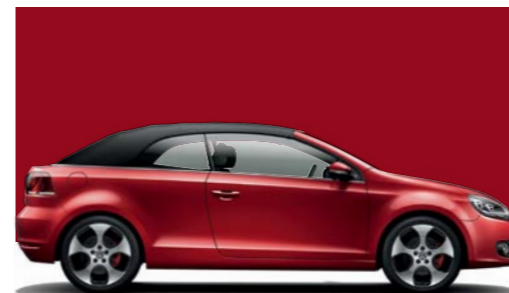


PURE WHITE | NON-METALLIC* | **0Q**
STANDARD | **R**
OPTIONAL | **S | SE | GT | GTI**

* Optional at extra cost.



URANO GREY | NON-METALLIC | **5K**
STANDARD | **S | SE | GT | GTI**



TORNADO RED | NON-METALLIC | **G2**
STANDARD | **GTI**



DARK PURPLE | METALLIC* | **0K**
OPTIONAL | **S | SE | GT**



CARBON STEEL GREY | METALLIC* | **1K**
OPTIONAL | **GTI**



RIISING BLUE | METALLIC* | **4C**
OPTIONAL | **R**



GEORGIA BLUE | METALLIC* | **5R**
OPTIONAL | **S | SE | GT**



SUNSET RED | METALLIC* | **6K**
OPTIONAL | **S | SE | GT**



REFLEX SILVER | METALLIC* | **8E**
OPTIONAL | **S | SE | GT | GTI | R**



TUNGSTEN SILVER | METALLIC* | **K5**
OPTIONAL | **S | SE | GT | GTI**



STEEL GREY | METALLIC* | **X6**
OPTIONAL | **S | SE | GT | GTI**



NIGHT BLUE | METALLIC* | **Z2**
OPTIONAL | **S | SE | GT | GTI**



DEEP BLACK | PEARL EFFECT* | **2T**
OPTIONAL | **S | SE | GT | GTI | R**

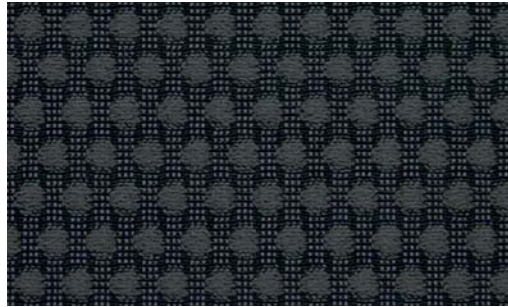


ORYX WHITE | PREMIUM PAINT* | **0R**
OPTIONAL | **S | SE | GT | GTI**

Please note: the print processes do not allow exact reproduction of the paint colours.
* Optional at extra cost.



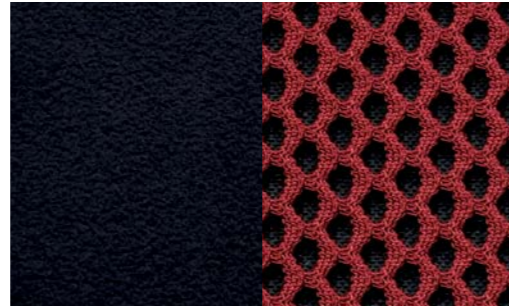
UPHOLSTERY



'MERLIN' CLOTH | TITAN BLACK | **UH**
STANDARD | **S** | **SE**



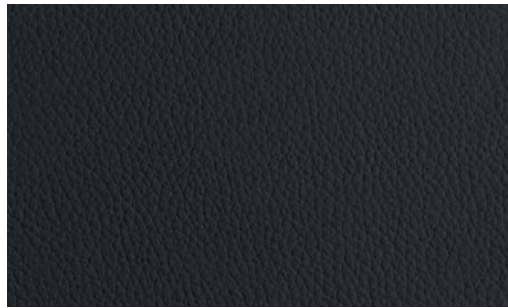
ALCANTARA | TITAN BLACK | **UH**
STANDARD | **GT**



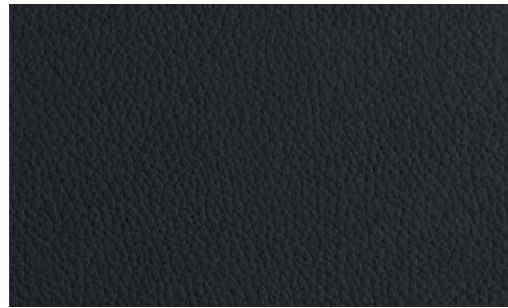
ALCANTARA | TITAN BLACK/RED | **UK**
STANDARD | **GT**



'JACARA' CLOTH | BLACK/RED | **XP**
STANDARD | **GTI**



'VIENNA' LEATHER† | BLACK | **OU**
STANDARD | **R**



'VIENNA' LEATHER**† | BLACK | **LE**
OPTIONAL | **SE** | **GT** | **GTI**



'VIENNA' LEATHER**† | TRUFFLE | **LF**
OPTIONAL | **SE** | **GT**



'VIENNA' LEATHER**† | CERAMIC | **LJ**
OPTIONAL | **SE** | **GT**



'VIENNA' LEATHER**† | RED | **LR**
OPTIONAL | **SE** | **GT**

Please note: the print processes do not allow exact reproduction of the upholstery colours.
* Optional at extra cost. † Some parts of leather interior will contain artificial leather.

COMBINATIONS

Seat upholstery	Carpet	Dashboard	Non-Metallic* – Pure White 0Q†	Non-Metallic* – Urano Grey 5K	Non-Metallic – Tornado Red G2	Metallic* – Dark Purple 0K	Metallic* – Carbon Steel Grey 1K	Metallic* – Rising Blue 4C	Metallic* – Georgia Blue 5R	Metallic* – Sunset Red 6K	Metallic* – Reflex Silver 8E	Metallic* – Tungsten Silver K5	Metallic* – Steel Grey X6	Metallic* – Night Blue Z2	Pearl Effect* – Deep Black 2T	Premium paint* – Oryx White 0R
'Merlin' cloth																
Standard on S, SE models																
Titan Black (UH)	Black	Black	●	●	–	●	–	–	●	●	●	●	●	●	●	●
Alcantara seat centre section and 'Microfibre' side bolsters																
Standard on GT models																
Titan Black (UH)	Black	Black	●	●	–	●	–	–	●	●	●	●	●	●	●	●
Titan Black/Red (UK)	Black	Black	●	●	–	–	–	–	–	●	●	●	●	●	●	●
'Jacara' cloth																
Standard on GTI models																
Black/Red (XP)	Black	Black	●	●	●	–	●	–	–	–	●	●	●	●	●	●
'Vienna' leather†																
Standard on R models																
Black (OU)	Black	Black	●	–	–	–	–	●	–	–	●	–	–	–	●	–
'Vienna' leather**																
Optional on SE, GT models																
Black (LE)	Black	Black	○	○	–	○	–	–	○	○	○	○	○	○	○	○
Truffle (LF)	Black	Black	○	○	–	○	–	–	○	–	○	○	○	○	○	○
Ceramic (LJ)	Black	Black	○	○	–	○	–	–	○	○	○	○	○	○	○	○
Red (LR)	Black	Black	○	○	–	–	–	–	–	○	○	○	○	○	○	○
'Vienna' leather**																
Optional on GTI models																
Black (LE)	Black	Black	○	○	○	–	○	–	–	–	○	○	○	○	○	○

* Pure White non-metallic, metallic, pearl effect and premium paints, and leather upholstery are optional at extra cost.

† Pure White non-metallic is standard on R models.

‡ Some parts of leather interior will contain artificial leather.

● Standard ○ Optional at extra cost – Not available

There's a Volkswagen for all of us.

Nippy city run around? Luxurious executive saloon? Open-top cruiser? Whatever it is you're looking for, we probably have it. From the iconic Beetle and Golf GTI to the up! and ultra-efficient BlueMotion Polo, there's a Volkswagen for everyone.

If you're thinking you might like to try a different Volkswagen, take a look at the selection below to see what else we have. There are 21 models in our range, so there's bound to be at least one that catches your eye.



Efficient

Our BlueMotion models benefit from innovative energy-saving technology that helps you optimise fuel consumption and reduce harmful emissions. This includes low rolling resistance tyres and improved aerodynamics, accompanied with advanced engines and gearboxes. Choose from the BlueMotion Polo, Golf or Passat.

However, BlueMotion Technology can be found across our range where automatic Start/Stop technology and brake energy recuperation is standard on the majority of our engines, helping you to save more money by being more efficient.



Spacious family cars

Sharan: The ultimate in convenience with sliding rear doors, and enough space for the whole family. And their luggage. And the dogs.

If it's space you're after, then you might also like to consider the Tiguan, Golf Plus, Golf Estate, Touran and Passat Estate.



Style

Beetle: The original icon. And still the most unique way to make a fashion statement.

For more fun with the top down, why not consider Beetle Cabriolet, Golf Cabriolet or Eos.



City run around

up!: The ideal city car. Efficient, fun and surprisingly spacious, with that trademark Volkswagen solidity.

If you're looking for something slightly more spacious, then why not consider the up!'s bigger sibling, the Polo. City run around efficiency with more versatility and even more space can be found on the iconic Golf – winner of 'World Car of the Year 2013'.



Executive

Volkswagen CC: Perfectly turned out high-tech, executive luxury. A contemporary, stylish and innovative coupé.

All the luxury you need can also be found in the top of the range Phaeton, and executive comfort in the Passat Saloon and Jetta.



4x4

Touareg: The SUV just got smarter. True four by four capability off-road, and smooth, luxurious and powerful when on it. Features four wheel drive technology, '4MOTION', as standard for optimum road grip, stability and control.

Go anywhere, do anything in our four wheel drive alternatives: Tiguan and Passat Alltrack.



Sporty

Scirocco: As exciting to drive as it is to look at. Style, performance and power.

You will also find our sporty gene in the iconic Golf GTI and Golf GTD. Or for something more refined and elegant, there's the Eos too.

TECHNICAL SPECIFICATION

	S 1.2 litre TSI 105 PS	S, SE 1.4 litre TSI 122 PS	GT 1.4 litre TSI 160 PS	GTI 2.0 litre TSI 210 PS	R 2.0 litre TSI 265 PS	S, SE 1.6 litre TDI 105 PS BlueMotion Technology	SE, GT 2.0 litre TDI 140 PS BlueMotion Technology
Engine							
Engine type	Four cylinder petrol	Four cylinder petrol	Four cylinder petrol	Four cylinder petrol	Four cylinder petrol	Four cylinder diesel	Four cylinder diesel
Cubic capacity, ltrs/cc	1.2/1197	1.4/1390	1.4/1390	2.0/1984	2.0/1984	1.6/1598	2.0/1968
Max. output, PS ⁽⁰¹⁾ /kW	105/77	122/90	160/118	210/155	265/195	105/77	140/103
at rpm	5000	5000	5800	5300-6200	6000	4400	4200
Max. torque, lbs.ft/Nm	129/175	148/200	177/240	206/280	258/350	184/250	236/320
at rpm	1550-4100	1500-4000	1500-4500	1700-5200	2500-5000	1500-2500	1750-2500
Gearbox	Six speed manual	Six speed manual	Six speed manual	Six speed manual	–	Five speed manual	Six speed manual
	–	Seven speed auto DSG	Seven speed auto DSG	Six speed auto DSG	Six speed auto DSG	–	Six speed auto DSG

Weights, kgs

Manual gearbox:							
Unladen weight ⁽⁰²⁾	1416	1456	1484	1533	–	1501	1521
Gross vehicle weight	1850	1890	1920	1960	–	1920	1960
Payload ⁽⁰²⁾	509	509	511	502	–	494	514
Axle load limit: Front	960	1000	1030	1070	–	1050	1070
Rear	940	940	940	940	–	920	940
Automatic DSG gearbox:							
Unladen weight ⁽⁰²⁾	–	1479	1503	1555	1614	–	1545
Gross vehicle weight	–	1920	1940	1980	2000	–	1980
Payload ⁽⁰²⁾	–	516	512	500	461	–	510
Axle load limit: Front	–	1030	1050	1090	1110	–	1090
Rear	–	940	940	940	940	–	940

Trailer load limits, kgs ⁽⁰³⁾

Braked 12% incline:							
Manual gearbox	1200	1300	1400	1400	–	1400	1500
Automatic DSG gearbox	–	1300	1400	1400	–	–	1500
Unbraked:							
Manual gearbox	700	720	740	750	–	750	750
Automatic DSG gearbox	–	730	750	750	–	–	750
Towbar load limit	75	75	75	75	–	75	75

	S 1.2 litre TSI 105 PS	S, SE 1.4 litre TSI 122 PS	GT 1.4 litre TSI 160 PS	GTI 2.0 litre TSI 210 PS	R 2.0 litre TSI 265 PS	S, SE 1.6 litre TDI 105 PS BlueMotion Technology	SE, GT 2.0 litre TDI 140 PS BlueMotion Technology
Performance							
Top speed, mph (km/h), where the law permits							
Manual gearbox	117 (188)	122 (197)	134 (216)	147 (237)	–	117 (188)	129 (207)
Automatic DSG gearbox	–	122 (197)	134 (216)	146 (235)	155 (250)	–	127 (205)
Acceleration, secs 0 - 62mph							
Manual gearbox	11.7	10.5	8.4	7.3	–	12.1	9.9
Automatic DSG gearbox	–	10.5	8.4	7.3	6.4	–	9.9
ABI insurance group, 1 - 50	15E	19E	29E	35E	39E	17E	23E

Environmental information

Fuel grade, minimum	Unleaded, 95 RON	Unleaded, 95 RON	Unleaded, 95 RON	Unleaded, 95 RON	Unleaded, 95 RON	Diesel ⁽⁰⁴⁾	Diesel ⁽⁰⁴⁾
Fuel tank capacity, galls/ltrs ⁽⁰⁵⁾	12.1/55	12.1/55	12.1/55	12.1/55	12.1/55	12.1/55	12.1/55
Official fuel consumption, manual gearbox, mpg/ltr per 100km ⁽⁰⁶⁾							
Urban	38.7/7.3	33.6/8.4	34.0/8.3	27.2/10.4	–	54.3/5.2	52.3/5.4
Extra-urban	55.4/5.1	53.3/5.3	52.3/5.4	47.1/6.0	–	68.9/4.1	68.9/4.1
Combined	47.9/5.9	44.1/6.4	44.1/6.4	37.2/7.6	–	64.2/4.4	62.8/4.5
Official fuel consumption, automatic DSG gearbox, mpg/ltr per 100km ⁽⁰⁶⁾							
Urban	–	35.3/8.0	36.2/7.8	27.2/10.4	25.7/11.0	–	46.3/6.1
Extra-urban	–	52.3/5.4	52.3/5.4	45.6/6.2	43.5/6.5	–	62.8/4.5
Combined	–	44.8/6.3	44.8/6.3	36.7/7.7	34.4/8.2	–	55.4/5.1
Official CO₂ emission, g/km							
Manual gearbox ⁽⁰⁷⁾	139	149	150	177	–	117	119
Automatic DSG gearbox ⁽⁰⁷⁾	–	147	148	180	190	–	134
Emission class	EURO 5	EURO 5	EURO 5	EURO 5	EURO 5	EURO 5	EURO 5
Noise, dB							
Manual gearbox	69.0	TBA	71.0	72.0	–	70.0	TBA
Automatic DSG gearbox	–	TBA	68.0	73.0	TBA	–	TBA

TECHNOLOGY

Technical specification notes

- 01) The maximum power output figures are quoted in PS (or Pferdestärke, which is the metric equivalent of horsepower). To convert from metric to imperial horsepower, divide the PS figure by 1.0139.
- 02) Figures are calculated in accordance with manufacturer's criteria. The individual unladen weight depends on the specification of the vehicle, this then reduces the possible payload accordingly. The unladen weight and payload both include the fuel tank 90% full, driver (68kg) and luggage (7kg) in line with EU directive 95/48.
- 03) With increasing altitude the engine performance diminishes. From 1,000m above sea level and for every 1,000m thereafter 10% of the vehicle/trailer weight (trailer weight + gross vehicle weight) must be deducted.
- 04) The use of 100% RME and FAME (bio diesel) is not possible. Forecourt diesel with up to 7% bio diesel content, adhering to standard BS EN 590, can be used in diesel engines. The use of ethanol in forecourt petrol meeting BS EN 228 is allowable.
- 05) The size of the fuel tank is approximate and therefore it may be possible to add a greater amount of fuel than the size of the tank specified, due to the space in the filler neck.
- 06) Fuel consumption and CO₂ figures are obtained under standardised EU test conditions (Directive 93/116/EEC). This allows a direct comparison between different manufacturer models but may not represent the actual fuel consumption achieved in 'real world' driving conditions. More information is available on the Volkswagen website at www.volkswagen.co.uk and at www.vca.gov.org.
- 07) The weight of a vehicle will influence the level of CO₂ emission it produces; as a result, vehicles with higher levels of specification and factory-fitted options may emit higher levels of CO₂.

Maximum luggage capacity, litres VDA measuring method using 200 x 100 x 50mm blocks

	S, SE, GT	GTI, R
With rear seat upright	250	250

Exterior dimensions

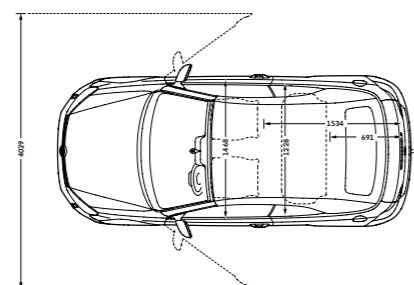
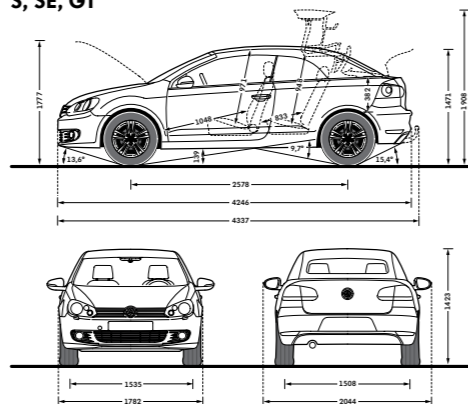
Length, mm	4246	4258 (4266)
Width – including door mirrors, mm	2044	2044
Width – excluding door mirrors, mm	1782	1782
Height, mm	1423	1414 (1405)
Height – opened bonnet/floor, mm	1777	1767 (1758)
Height – roof opening/floor, mm	1908	1898 (1890)
Height – opened boot/floor, mm	1471	1462 (1453)
Wheelbase, mm	2578	2578
Turning circle, m	10.9	10.9

Interior dimensions

Effective headroom, front, mm	971	971
Effective headroom, rear, mm	948	948
Legroom, front, mm	1048	1048
Legroom, rear, mm	833	833
Elbow width, front, mm	1468	1468
Elbow width, rear, mm	1228	1228

R figures in brackets.

S, SE, GT



GTI, R

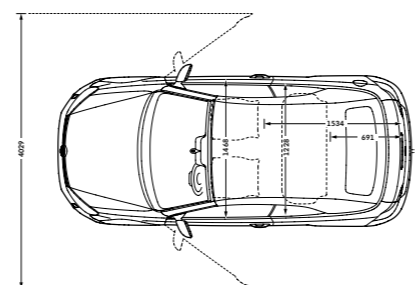
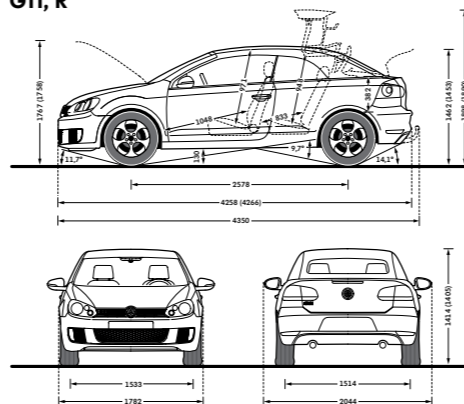


Image shown is Golf Cabriolet GTI.

On illustrations, where arrows and figures are shown inside of the vehicle, the measurements are for interior dimensions. Where arrows and figures are shown outside of the vehicle, the measurements are for exterior dimensions.

Engines

Front transverse-installed engine

1.2 litre/105 PS⁽⁰¹⁾ (77 kW) petrol engine: EU5 emissions standard, four cylinder in-line direct injection engine, two valves per cylinder and turbocharger module with electric boost pressure regulation. Available with a six speed manual transmission

1.4 litre/122 PS⁽⁰¹⁾ (90 kW) petrol engine: EU5 emissions standard, four cylinder in-line direct injection turbocharged engine, with four valves per cylinder. Fitted with a turbocharger. Available with a six speed manual or a seven speed automatic DSG transmission

1.4 litre/160 PS⁽⁰¹⁾ (118 kW) petrol engine: EU5 emissions standard, four cylinder in-line direct injection twin-charged engine with four valves per cylinder, a supercharger and a turbocharger. Available with a six speed manual or a seven speed automatic DSG transmission

2.0 litre/210 PS⁽⁰¹⁾ (155 kW) petrol engine: EU5 emissions standard, four cylinder in-line direct injection turbocharged engine. Fitted with four valves per cylinder and a turbocharger. Available with a six speed manual or a six speed automatic DSG transmission

2.0 litre/265 PS⁽⁰¹⁾ (195 kW) petrol engine: EU5 emissions standard, four cylinder in-line direct injection turbocharged engine. Fitted with four valves per cylinder and a turbocharger. Available with a six speed automatic DSG transmission

1.6 litre/105 PS⁽⁰¹⁾ (77 kW) common rail diesel engine: EU5 emissions standard, four cylinder in-line common rail diesel engine, with four valves per cylinder. Fitted with a turbocharger and a DPF (diesel particulate filter). Available with a five speed manual transmission

2.0 litre/140 PS⁽⁰¹⁾ (103 kW) common rail diesel engine: EU5 emissions standard, four cylinder in-line common rail diesel engine, with four valves per cylinder. Fitted with a turbocharger and a DPF (diesel particulate filter). Available with a six speed manual or a six speed automatic DSG transmission

Transmission

- Front wheel drive through asbestos-free single-plate dry clutch. Hydraulic clutch-mechanism. Five or six speed manual, six or seven speed automatic DSG gearbox with double joint half axles
- Five speed manual: 1.6 litre TDI 105 PS
- Six speed manual: 1.2 litre TSI 105 PS, 1.4 litre TSI 122 PS, 1.4 litre TSI 160 PS, 2.0 litre TSI 210 PS, 2.0 litre TDI 140 PS
- Six speed automatic DSG: 2.0 litre TSI 210 PS, 2.0 litre TSI 265 PS, 2.0 litre TDI 140 PS
- Seven speed automatic DSG: 1.4 litre TSI 122 PS, 1.4 litre TSI 160 PS

Running gear

- ESC (Electronic Stability Control) including EDL (Electronic Differential Lock), ASR (Traction Control) and Countersteer Support
- Front and rear anti-roll bar
- Front suspension through coil springs with telescopic shock absorbers, all elements integrated in chassis legs
- Rear suspension with gas pressure shock absorbers and separate springs
- Wheel control: front through chassis legs and (lower) triangular wishbones (directionally stabilising steering roll radius)
- Wheel control: rear through four-link suspension with independent wheel suspension
- XDS electronic differential lock (GTI and R models)

Steering

- Electro-mechanical steering rack
- Collapsible, height and lengthways adjustable safety steering column

Brakes

- ABS (Electronically controlled Anti-lock Braking System) with EBD (Electronic Brake-pressure Distribution)
- Diagonal twin-circuit brake system with ventilated front disc brakes and rear disc brakes
- Asbestos-free brake pads
- HBA (Hydraulic Brake Assist)

VOLKSWAGEN SERVICE

The Volkswagen Warranty.

Three-year Warranty.

All Volkswagen passenger cars come with a three-year/60,000 miles warranty, which protects your car against the failure of most technical and electrical components due to manufacturing defects. This comprises a two-year manufacturer's warranty with unlimited mileage plus a further one-year/60,000 miles (whichever is soonest) Retailer Warranty*. Should the mileage exceed 60,000 miles within the first two years, the manufacturer's two-year warranty will still be valid. Full details of the three-year warranty are available from your authorised Volkswagen retailer or repairer.

* All warranty work must be completed by an authorised Volkswagen retailer or repairer.

Three-year Paint Warranty.

The paintwork of the Golf Cabriolet is covered against manufacturing defects for a period of three years. Naturally, the Golf Cabriolet must be cared for in compliance with the operating instructions which will be found in your vehicle handbook. Please consult your authorised Volkswagen retailer or repairer for full warranty details.

12-year Body Protection Warranty.

The internal body sections and panels of the Golf Cabriolet are covered against rusting through from the inside for 12 years. Naturally, the Golf Cabriolet must be cared for in compliance with the operating instructions. Please consult your authorised Volkswagen retailer or repairer for full warranty details.

Approved Accessories.

A comprehensive range of accessories from alloy wheels to carpet mats is available to complement the factory-fitted option list. Volkswagen approved accessories purchased from and fitted by your authorised Volkswagen retailer at the point of vehicle sale will also benefit from the three-year vehicle warranty.

Extended Warranty.

If you order the Volkswagen Extended Warranty as an option when buying your new Golf Cabriolet then you get the 100% Volkswagen Warranty and you can continue to enjoy comprehensive Volkswagen protection against many unforeseeable repair costs. Designed to your needs, you can purchase an extra one or two year's warranty up to a maximum of five years or 90,000 miles.

Tax Free Sales.

For full details, please contact your authorised Volkswagen retailer.

Service Intervals.

Volkswagen are pleased to offer you a choice on how your Golf Cabriolet is serviced. The appropriate selection is entirely dependent on how the car is likely to be driven and its general use. To help you identify which type of service would be most suitable, please refer to the following guide.

The Fixed Service is recommended for vehicles that will cover less than 10,000 miles in 12 months and if the vehicle is likely to be used in the following way:

- Predominantly urban driving, short journeys with frequent cold starts.
- Activities regularly producing high engine loading, e.g. frequent hill climbs, driving with vehicle fully loaded and towing.
- Uneconomical driving style using high rpms with heavy acceleration and heavy braking.

The service intervals for the Fixed Service are as follows:

- Oil change service
Every 10,000 miles/1 year (whichever is soonest).
- Interval service
Every 20,000 miles/2 years (whichever is soonest).
- Inspection service
Every 40,000 miles/3 years (whichever is soonest).

The Flexible Service is recommended for vehicles with a daily mileage of more than 25 miles where the vehicle is driven regularly mainly on longer distance journeys. The vehicle is driven mainly at a constant speed with minimum vehicle and engine loading, minimal towing and driven in an economical manner.

With the Flexible Service the vehicle can cover anywhere between 10,000[†] and a maximum of 18,000[†] miles or 24 months (whichever is soonest) between oil changes. Inspection service is typically in the third year of ownership and thereafter every second year, for vehicles with an approximate annual mileage of 10,000 miles.

[†] Please note that mileages are approximate as the service indicator system uses kilometres as the distance measurement.

Please consult your authorised Volkswagen retailer or repairer for advice and full details.

Volkswagen Roadside Assistance.

Every new car is registered for Volkswagen Roadside Assistance for one year. This provides vehicle home and roadside recovery in the unlikely event of a breakdown in the UK and Europe (subject to conditions). Volkswagen Roadside Assistance can also be purchased for subsequent years. For full details, please contact your authorised Volkswagen retailer or repairer.

Volkswagen Insurance[‡].

We want you to start enjoying your new car from day one and thanks to Volkswagen Insurance complimentary seven day cover, you can. Call free on 0800 316 7892 (lines are open Monday to Friday 8am – 9pm and Saturday 9am – 5pm), provide a few details and a cover note will be sent to your retailer. They will then tax your car and you can drive it away.

[‡] Volkswagen Insurance is a trading name of Volkswagen Insurance Service (Great Britain) Limited, an appointed representative of Volkswagen Financial Services (UK) Limited, Brunswick Court, Yeomans Drive, Blakelands, Milton Keynes MK14 5LR. Registered in England number 2835230. Volkswagen Insurance is sold, underwritten and administered by Allianz Insurance plc registered in England number 84638. Registered office 57 Ladymead, Guildford, Surrey GU1 1DB. Volkswagen Financial Services (UK) Limited and Allianz Insurance plc are authorised and regulated by the Financial Services Authority. Volkswagen Financial Services (UK) Limited and Allianz Insurance plc are not part of the same corporate group.

Volkswagen Ensurance.

Get three years' Volkswagen Ensurance cover for free. Another great benefit of being a Volkswagen driver. If your Volkswagen was damaged in an accident, wouldn't you want it fixed by a Volkswagen trained technician using only genuine Volkswagen parts? Ensurance is Volkswagen's accident and repair cover which does exactly that. It works alongside your main comprehensive motor insurance policy no matter who you are insured with, to make sure you get the quality repair and service you would want. If you're involved in an accident or your car is stolen, just one call to us and we'll look after your claim from start to finish ensuring your Volkswagen is restored to the highest standard.

Activate your cover and benefit from:

- A guarantee that your Volkswagen will be repaired in a Volkswagen Insurance approved repairer, by Volkswagen trained technicians, using only genuine Volkswagen parts and paints.
- A dedicated Claims Manager available 24-hours a day to manage your claim, liaising with your insurer and the repairer, so you don't have to.
- Help to recover any uninsured losses using our Legal Expenses Cover.
- Online claims tracking so you can keep up to date with the status of any claim.

Volkswagen Ensurance is free to all Volkswagen customers for three years and it only takes a minute to get cover. To find out more and to activate your cover, visit volkswagen-ensurance.co.uk

Volkswagen Finance[‡].

Volkswagen Finance specialises in providing funding solutions for Volkswagen drivers. Whether your Volkswagen is for private or business use, you can choose from a range of funding options.

- Solutions – a personal contract plan
- Hire purchase
- Lease purchase
- Finance lease
- Contract hire

With all Volkswagen Finance products you can choose a fixed-cost maintenance plan to help you budget for your servicing and maintenance costs.

No matter what finance product you choose, your local Volkswagen retailer will be able to provide you with a personalised quote that could meet your budget and vehicle needs.

[‡] Volkswagen Finance is a trading name of Volkswagen Financial Services (UK) Limited.

An offer of finance depends on certain conditions. Available to people over 18 in the UK only.

CO₂ Emissions.

Increased weight of a vehicle, including higher trim levels and the addition of options will have a detrimental influence on the level of fuel consumption and CO₂ emissions produced.

The CO₂ and fuel consumption figures are obtained from tests on a representative vehicle of the type, conducted and approved in accordance with Council Directive 80/1268/EEC as amended by Directive 1999/100/EC (or later) on the approximation of the laws of the member states relating to the carbon dioxide emissions and the fuel consumption of motor vehicles.

Please Note.

Some illustrations in this brochure do not necessarily reflect UK specifications and may not be available. In particular, controls and some items of equipment are positioned differently for the UK.

The specifications contained in this brochure are for information purposes only and are subject to change. If you require any specific feature, you must consult your authorised Volkswagen retailer who is regularly updated with any change in specification. Please check model availability and full specification details with your authorised Volkswagen retailer prior to ordering.

Note: we would like to advise you that telephone calls to Volkswagen Customer Care may be monitored and recorded as part of our training and quality assurance processes. All our monitoring and recording processes meet OfTel regulations.

The Golf Cabriolet

Volkswagen Information Service. Telephone: 0800 333 666

Internet: www.volkswagen.co.uk

© Volkswagen Group United Kingdom Limited 2013.

Issue: 1 September 2013. Printed in UK.

PVW700CABGOL



facebook.com/VolkswagenUK



[@UKVolkswagen](https://twitter.com/@UKVolkswagen)



youtube.com/UKVolkswagen