

EFFECTIVE FROM 4.11.2013



Das Auto.

GOLF. DAS AUTO.

PRICE AND SPECIFICATION GUIDE





Model shown is Golf GTD.

CONTENTS

PAGE 03	MODEL PRICES
PAGE 06	STANDARD EQUIPMENT
PAGE 14	FACTORY-FITTED OPTIONS
PAGE 20	ACCESSORIES
PAGE 21	VOLKSWAGEN WARRANTY AND SERVICE PLANS
PAGE 24	ENVIRONMENTAL INFORMATION
PAGE 24	VEHICLE EXCISE DUTY (VED)
PAGE 26	VOLKSWAGEN SERVICE

This recommended retail price list supersedes all previous recommended retail price lists and is effective from 4.11.2013. All recommended retail prices and specifications are correct at the time of going to press. These prices and specifications may be subject to change without notice.

MODEL PRICES

3 AND 5-DOOR HATCHBACK RANGE.

				Output, PS	CO ₂ emission, g/km	Maximum VED band*	Basic Recommended Retail £	VAT £	Total Recommended Retail £	Manufacturer's Recommended 'On the road' Retail £
S	1.2 ltr TSI	3-door	5 speed manual	85	113	C	13,475.00	2,695.00	16,170.00	16,775.00
	1.2 ltr TSI	5-door	5 speed manual	85	113	C	14,020.83	2,804.17	16,825.00	17,430.00
	1.2 ltr TSI	3-door	6 speed manual	105	114	C	14,316.67	2,863.33	17,180.00	17,785.00
	1.2 ltr TSI	5-door	6 speed manual	105	114	C	14,862.50	2,972.50	17,835.00	18,440.00
	1.2 ltr TSI	5-door	7 speed auto DSG	105	115	C	16,041.67	3,208.33	19,250.00	19,855.00
	1.4 ltr TSI	3-door	6 speed manual	122	120	C	14,950.00	2,990.00	17,940.00	18,545.00
	1.4 ltr TSI	5-door	6 speed manual	122	123	D	15,495.83	3,099.17	18,595.00	19,200.00
	1.4 ltr TSI	5-door	7 speed auto DSG	122	116	C	16,675.00	3,335.00	20,010.00	20,615.00
	1.6 ltr TDI	3-door	5 speed manual	90	98	A	14,991.67	2,998.33	17,990.00	18,595.00
	1.6 ltr TDI	5-door	5 speed manual	90	98	A	15,537.50	3,107.50	18,645.00	19,250.00
	1.6 ltr TDI	3-door	5 speed manual	105	99	A	15,662.50	3,132.50	18,795.00	19,400.00
	1.6 ltr TDI	5-door	5 speed manual	105	99	A	16,208.33	3,241.67	19,450.00	20,055.00
BLUEMOTION	1.6 ltr TDI	3-door	6 speed manual	110	85	A	16,675.00	3,335.00	20,010.00	20,615.00
	1.6 ltr TDI	5-door	6 speed manual	110	85	A	17,220.83	3,444.17	20,665.00	21,270.00
SE	1.4 ltr TSI	3-door	6 speed manual	122	120	C	15,729.17	3,145.83	18,875.00	19,480.00
	1.4 ltr TSI	5-door	6 speed manual	122	123	D	16,275.00	3,255.00	19,530.00	20,135.00
	1.4 ltr TSI	5-door	7 speed auto DSG	122	116	C	17,454.17	3,490.83	20,945.00	21,550.00
	1.6 ltr TDI	3-door	5 speed manual	105	99	A	16,441.67	3,288.33	19,730.00	20,335.00
	1.6 ltr TDI	5-door	5 speed manual	105	99	A	16,987.50	3,397.50	20,385.00	20,990.00
	1.6 ltr TDI	5-door	7 speed auto DSG	105	102	B	18,166.67	3,633.33	21,800.00	22,405.00
	2.0 ltr TDI	3-door	6 speed manual	150	106	B	17,704.17	3,540.83	21,245.00	21,850.00
	2.0 ltr TDI	5-door	6 speed manual	150	106	B	18,250.00	3,650.00	21,900.00	22,505.00
	2.0 ltr TDI	5-door	6 speed auto DSG	150	119	C	19,429.17	3,885.83	23,315.00	23,920.00
GT	1.4 ltr TSI ACT	3-door	6 speed manual	140	109	B	18,491.67	3,698.33	22,190.00	22,795.00
	1.4 ltr TSI ACT	5-door	6 speed manual	140	112	C	19,037.50	3,807.50	22,845.00	23,450.00
	1.4 ltr TSI ACT	5-door	7 speed auto DSG	140	110	B	20,216.67	4,043.33	24,260.00	24,865.00
	2.0 ltr TDI	3-door	6 speed manual	150	106	B	18,912.50	3,782.50	22,695.00	23,300.00
	2.0 ltr TDI	5-door	6 speed manual	150	106	B	19,458.33	3,891.67	23,350.00	23,955.00
	2.0 ltr TDI	5-door	6 speed auto DSG	150	119	C	20,637.50	4,127.50	24,765.00	25,370.00

* For full details of VED (Vehicle Excise Duty) bands and other costs included in the 'On the road' recommended retail price, please see page 24.

MODEL PRICES (CONTINUED)

3 AND 5-DOOR HATCHBACK RANGE.

				Output, PS	CO ₂ emission, g/km	Maximum VED band*	Basic Recommended Retail £	VAT £	Total Recommended Retail £	Manufacturer's Recommended 'On the road' Retail £†
GTD	2.0 ltr TDI	3-door	6 speed manual	184	109	B	20,800.00	4,160.00	24,960.00	25,565.00
	2.0 ltr TDI	5-door	6 speed manual	184	109	B	21,345.83	4,269.17	25,615.00	26,220.00
	2.0 ltr TDI	3-door	6 speed auto DSG	184	119	C	21,979.17	4,395.83	26,375.00	26,980.00
	2.0 ltr TDI	5-door	6 speed auto DSG	184	122	D	22,525.00	4,505.00	27,030.00	27,635.00
GTI	2.0 ltr TSI	3-door	6 speed manual	220	139	E	21,162.50	4,232.50	25,395.00	26,125.00
	2.0 ltr TSI	5-door	6 speed manual	220	139	E	21,708.33	4,341.67	26,050.00	26,780.00
	2.0 ltr TSI	3-door	6 speed auto DSG	220	148	F	22,329.17	4,465.83	26,795.00	27,540.00
	2.0 ltr TSI	5-door	6 speed auto DSG	220	148	F	22,875.00	4,575.00	27,450.00	28,195.00
R	2.0 ltr TSI	3-door	6 speed manual	300	165†	G	24,266.67	4,853.33	29,120.00	29,900.00
	2.0 ltr TSI	5-door	6 speed manual	300	165†	G	24,812.50	4,962.50	29,775.00	30,555.00
	2.0 ltr TSI	3-door	6 speed auto DSG	300	159†	G	25,445.83	5,089.17	30,535.00	31,315.00
	2.0 ltr TSI	5-door	6 speed auto DSG	300	159†	G	25,991.67	5,198.33	31,190.00	31,970.00

* For full details of VED (Vehicle Excise Duty) bands and other costs included in the 'On the road' recommended retail price, please see page 24. † The CO₂ figure quoted is a provisional figure which has yet to be confirmed. A change to this figure may result in a change to the Manufacturer's Recommended 'On the road' Retail price. Please consult your Volkswagen retailer for full details.

FIXED PRICE SERVICE PLAN

3-year/30,000 miles (whichever is soonest) service plan comprising:

12 months/10,000 miles: Oil change service

24 months/20,000 miles: Interval service (including oil change)

36 months/30,000 miles: Inspection service (including oil change)
Brake fluid change

For pricing and further details, please consult your authorised Volkswagen retailer.



Interior shown is Golf GTI DSG with optional Discover Navigation Pro touch-screen navigation/DVD radio system, 2Zone electronic climate control, 'Vienna' leather upholstery and metallic paint.

MAIN ITEMS OF STANDARD SPECIFICATION

STANDARD ITEMS OF EQUIPMENT: S

VOLKSWAGEN SERVICE

3-year/60,000 miles warranty (whichever is soonest)

3-year paintwork warranty

12-year body protection warranty

Volkswagen Roadside Assistance

Please see page 26 for more details

WHEELS AND SUSPENSION

Full size wheel trims

Steel space saver spare wheel

6J x 15" steel wheels with 195/65 R15 tyres

EXTERIOR

Black front air intake and radiator grille

Body-coloured bumpers

Body-coloured door handles

Body-coloured door mirrors with integrated indicators

Galvanised body

Halogen clear headlights, range adjustable with daytime running lights

Heat insulating green tinted glass

Rear diffuser, black

Rear number plate lights incorporating LED technology

Rear screen wash/wipe with intermittent wipe

Rear window aerial

Tailgate with integrated rear roof spoiler

Twin exhaust tailpipe (122 PS engine only)

Windscreen wiper with intermittent wipe and 4 position delay

INTERIOR

Bag hook in luggage compartment

Chrome-plated air vent surrounds

Cover for storage compartment in centre console

Cup holders, front x 2

'Dark Rhodium Fine' decorative inserts in dash and door panels

Driver's and front passenger's seat height adjustment

Easy entry sliding seats (for access to rear seats – 3-door only)

Front centre armrest, with storage compartment and two rear air vents

Glovebox, illuminated, cooled and lockable

Grab handles, front x 2, rear x 2 with integrated coat hooks

Height and reach adjustable steering wheel

Instrument lighting, white adjustable panel illumination

Interior light delay

Load lashing points in luggage compartment x 4

Luggage compartment cover, stowable

Luggage compartment light

Reading lights, front x 2

Split folding rear seat backrest 60:40

Storage compartment in centre console

Storage compartment in rear doors

Storage compartment in roof console

Storage compartments in front doors

INTERIOR (CONTINUED)

Three-spoke steering wheel

Upholstery – 'Salt' cloth

Vanity mirrors, illuminated

Variable boot floor, height adjustable and removable

IN-CAR ENTERTAINMENT AND COMMUNICATIONS

Bluetooth telephone connection for compatible telephones¹

Composition Media system

– 5.8" colour touch-screen

– DAB digital radio receiver

– Glovebox-mounted single CD player

– MDI (Multi Device Interface), includes iPod cable and latest generation Lightning to 30-pin adaptor

– SD card reader

– Music playback from MP3, WMA and AAC files

– Title and cover art display

– 8 speakers, front and rear

– 4 x 20 watt output

– Car menu

– Eco HMI



SAFETY AND SECURITY

ABS (Anti-lock Braking System) with HBA (Hydraulic Brake Assist)

Automatic Post-Collision Braking System

Brake pad wear indicator

Curtain airbag system, for front and rear passengers

Child security locks in the rear doors

Disc brakes, front and rear (front ventilated)

Driver's and front passenger's airbags with passenger's airbag deactivation switch

Driver's and front passenger's safety-optimised head restraints

Driver's knee airbag

Electronic engine immobiliser

ESC (Electronic Stability Control) including EDL (Electronic Differential Lock) and ASR (Traction Control)

Front seat side impact airbags

Height-adjustable front three-point seat belts with tensioners

High level 3rd brake light incorporating LED technology

Holder for first aid box and warning triangle

Isofix child seat preparation (for 2 rear child seats)

Misfuel prevention device for diesel engines

STANDARD ITEMS OF EQUIPMENT: S (CONTINUED)

SAFETY AND SECURITY (CONTINUED)

Reflectors in all doors

Remote central locking with 2 remote folding keys

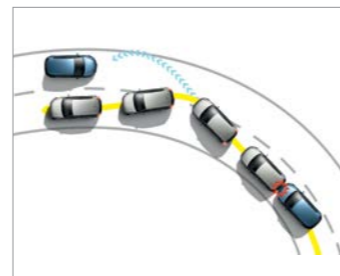
Tyre pressure loss indicator

Warning buzzer and light for front seat belts if unfastened

XDS electronic differential lock for improved traction and handling

3 rear head restraints

3 rear three-point seat belts



¹ Phones must be Bluetooth compatible, please contact your authorised Volkswagen retailer for specific phone compatibility.

The specifications listed are for information purposes only as our products are continually updated and changes may be made to the specifications at any time. If you require any specific feature, please consult your authorised Volkswagen retailer who is regularly updated with any change in specification. Specifications are subject to change without notice.

ADDITIONAL ITEMS OF EQUIPMENT: BLUEMOTION (OVER S)

WHEELS AND SUSPENSION

Alloy wheels, four 6J x 15" 'Lyon' with 195/65 R15 tyres and anti-theft wheel bolts

Sports suspension, lowered by approx. 10mm

Tyre repair kit (in lieu of steel space saver spare wheel)

EXTERIOR

Aerodynamic black front air intake and radiator grille

Black radiator grille with blue stripe

Unique 'BlueMotion' badging

Uniquely shaped C-pillar spoiler

Uniquely shaped roof spoiler, rear



ADDITIONAL ITEMS OF STANDARD EQUIPMENT: SE (OVER S)

WHEELS AND SUSPENSION

Alloy wheels, four 6½J x 16" 'Toronto' with 205/55 R16 tyres and anti-theft wheel bolts

EXTERIOR

Black front air intake and radiator grille with chrome trimmed inserts

Twin exhaust tailpipe (not 105 PS engine)

INTERIOR

'Brushed Dark Silver' decorative inserts in dash and door panels

Chrome-plated light switch surround

Cover for storage area in roof console

Driver's and front passenger's under seat drawer

Front comfort seats with height and lumbar adjustment

Front seat back storage pockets

Load-through provision

Luggage compartment storage area on right

Leather trimmed three-spoke multifunction steering wheel and gear knob

Rear centre armrest, with 2 cup holders, forms a table when folded down

Reading lights, front and rear x 2

Upholstery – 'Zoom/Micro' cloth

12V socket in luggage compartment



SAFETY AND SECURITY

Alarm with interior protection

Automatic coming/leaving home lighting function

PreCrash preventive occupant protection

COMFORT AND CONVENIENCE

Electric windows, rear (5-door only)

Rain sensor and automatic dimming interior rear-view mirror

DRIVER'S ASSISTANCE

Adaptive Cruise Control (ACC), including Front Assist, radar sensor controlled distance monitoring system, City emergency braking system, cruise control and speed limiter

Driver Alert system

Driver profile selection

Dusk sensor, automatic driving lights

Multifunction computer with 3.5" TFT screen



ADDITIONAL ITEMS OF STANDARD EQUIPMENT: GT (OVER SE)

WHEELS AND SUSPENSION

Alloy wheels, four 7J x 17" 'Dijon' with 225/45 R17 tyres and anti-theft wheel bolts
Sports suspension, lowered by approx. 10mm

EXTERIOR

Black front air intake and radiator grille with chrome trimmed inserts and roundel surround

'Cherry red' rear light clusters

Chrome trimmed front air intake surround

Front fog lights, including static cornering function (not R models)

Heat insulating rear tinted glass 65% light absorbing from B pillar backwards



INTERIOR

Carpet mats, front and rear

Chrome-plated electric mirror adjustment switch surround

Chrome-plated electric window button surround

'Cyclone' decorative inserts in dash and door panels

Front sport seats with height and lumbar adjustment

'Gloss Black' decorative inserts in centre console

Reading lights, front and rear x 2 incorporating LED technology

Steering wheel including paddle shift (auto DSG only)

Upholstery – Alcantara seat centre section and 'Global' cloth side bolsters

IN-CAR ENTERTAINMENT AND COMMUNICATIONS

Discover Navigation system (in addition to Composition Media system) (GT only)

– Preloaded European navigation data

– 2D/2.5D map view

– Three route options (Fast, Short, Eco)

– Dynamic navigation based on TMC+

– Branded points of interest

– Traffic Sign Display with speed limits and no overtaking zones

COMFORT AND CONVENIENCE

Ambient lighting, lights in front door armrests, light strips below trim in front doors and reflectors in front and rear doors

Front footwell illumination

Remote electrically foldable door mirrors, door mirror puddle lights and reverse activated kerb-view adjustment on passenger's door mirror

DRIVER'S ASSISTANCE

Parking sensors, front and rear – ultrasonic, audible with audio volume reduction when activated and optical parking display via vehicle's audio system

EFFICIENCY

ACT (Active Cylinder Technology)
1.4 TSI ACT 140 PS engine only

The specifications listed are for information purposes only as our products are continually updated and changes may be made to the specifications at any time. If you require any specific feature, please consult your authorised Volkswagen retailer who is regularly updated with any change in specification. Specifications are subject to change without notice.

ADDITIONAL ITEMS OF STANDARD EQUIPMENT: GTD (OVER GT)

WHEELS AND SUSPENSION

Alloy wheels, four 7½ x 18" 'Nogaro' with 225/40 R18 tyres and anti-theft wheel bolts

'GTD' sports suspension, lowered by approx. 15mm

EXTERIOR

Bi-xenon headlights for dipped and main beam with static cornering function, automatic range adjustment and LED daytime running lights

Extended sill strips, flared

Front fog lights incorporating LED technology

'Grey' brake calipers

'GTD' styling pack – uniquely shaped front and rear bumpers and 'Black' honeycomb front air intake

Headlight washers

Honeycomb radiator grille with chrome strip

Rear diffuser in 'Black' with chrome twin exhaust tailpipe

Rear lights incorporating LED technology

Rear number plate lights incorporating LED technology

'Smoked' rear light clusters

Unique 'GTD' badging

Uniquely shaped roof spoiler, rear

INTERIOR

Black rooflining

'Cyclone' decorative inserts in dash, centre console and door panels

Grey stitching on leather trimmed three-spoke multifunction steering wheel with 'GTD' logo and gear knob gaiter

Illuminated door sill protectors

Stainless steel pedals – clutch, brake and accelerator

Upholstery – 'Jacara Grey' cloth

Unique 'GTD' instrument cluster

IN-CAR ENTERTAINMENT AND COMMUNICATIONS

Composition Media system

– 5.8" colour touch-screen

– DAB digital radio receiver

– Glovebox-mounted single CD player

– MDI (Multi Device Interface), includes iPod cable and latest generation Lightning to 30-pin adaptor

– SD card reader

– Music playback from MP3, WMA and AAC files

– Title and cover art display

– 8 speakers, front and rear

– 4 x 20 watt output

– Car menu

– Eco HMI

SAFETY AND SECURITY

Anti-tramp function

XDSPlus electronic differential lock for improved traction and handling

COMFORT AND CONVENIENCE

Climate control – 2Zone electronic air conditioning with automatic air recirculation

DRIVER'S ASSISTANCE

Low washer fluid warning light

Multifunction colour display

Progressive steering



Model shown is Golf GTD.

ADDITIONAL ITEMS OF STANDARD EQUIPMENT: GTI (OVER GTD)

WHEELS AND SUSPENSION

Alloy wheels, four 7½ x 18" 'Austin' with 225/40 R18 tyres and anti-theft wheel bolts

'GTI' sports suspension, lowered by approx. 15mm

EXTERIOR

'GTI' styling pack – uniquely shaped front and rear bumpers and 'Black' honeycomb front air intake

Honeycomb radiator grille with red stripe

Rear diffuser in 'Black' with chrome exhaust tailpipes, left and right

'Red' brake calipers

Unique 'GTI' badging

INTERIOR

Red stitching on leather trimmed three-spoke multifunction steering wheel with 'GTI' logo and gear knob gaiter

Unique 'GTI' badging

Unique 'GTI' instrument cluster

Upholstery – 'Jacara Red' cloth

COMFORT AND CONVENIENCE

Red ambient lighting (GTI only)



Images shown are Golf GTI with optional GTI Performance pack and premium paint.

ADDITIONAL ITEMS OF STANDARD EQUIPMENT: R (OVER GTI)

WHEELS AND SUSPENSION

Alloy wheels, four 7½J x 18" 'Cadiz' with 225/40 R18 tyres and anti-theft wheel bolts

'R' sports suspension, lowered by approx. 15mm

EXTERIOR

Bi-xenon headlights for dipped and main beam with static cornering function, automatic range adjustment and unique double 'U-shaped' LED daytime running lights

'Black' brake calipers

Chrome effect door mirrors

'R' styling pack – uniquely shaped front and rear bumpers and side sills

Rear diffuser in 'Black' with twin oval chrome exhaust tailpipes, left and right

Unique 'R' badging

Unique 'R' radiator grille with chrome strip

INTERIOR

'Carbon-touch' decorative inserts in dash and door panels

Front sports seats with embroidered 'R' logo on head restraints

'Gloss Black' decorative inserts in centre console

Leather trimmed three-spoke multifunction steering wheel with 'R' logo and gear knob gaiter

Unique 'R' gear lever knob

Unique 'R' instrument cluster

Upholstery – 'Race' cloth

SAFETY AND SECURITY

Unique 'R' design key



Model shown is new Golf R with optional metallic paint.

EFFECTIVE FROM 4 NOVEMBER 2013.

FACTORY-FITTED OPTIONS

At Volkswagen, we work towards making sure that our cars are as close to perfection as possible, and we understand that every detail needs to be 100% right for you and your needs.

Introducing our exceptional range of factory-fitted options which allow you to express your individuality, help with the practical things in life, and add a touch of luxury at the same time. Whether you're looking for things to help you relax and take the stress out of driving, feel safe and protected, or simply look fantastic, just take your pick.

From cruise control to a panoramic sunroof, from tinted glass to adaptive chassis control, you'll find everything you need on the following pages to make your Golf **your** Golf, and perfect in every detail.



WHEELS AND SUSPENSION

		S	BlueMotion	SE	GT	GTD	GTI	R	Basic RRP £ Excluding VAT	Total RRP £ Including VAT
15" 'Lyon'	Four 6J x 15" 'Lyon' with 195/65 R15 tyres and anti-theft wheel bolts	○	●	-	-	-	-	-	354.17	425.00
16" 'Perth'	Four 6½J x 16" 'Perth' with 205/55 R16 tyres and anti-theft wheel bolts	○	-	-	-	-	-	-	695.83	835.00
	Four 6½J x 16" 'Perth' with 205/55 R16 tyres and anti-theft wheel bolts	-	○	-	-	-	-	-	354.17	425.00
	Four 6½J x 16" 'Perth' with 205/55 R16 tyres and anti-theft wheel bolts	-	-	○	-	-	-	-	No cost option	
17" 'Geneva'	Four 7J x 17" 'Geneva' with 225/45 R17 tyres and anti-theft wheel bolts	-	-	-	○	-	-	-	233.33	280.00
17" 'Madrid'	Four 7J x 17" 'Madrid' with 225/45 R17 tyres, anti-theft wheel bolts and sports suspension (lowered by approx. 10mm)	-	-	○	-	-	-	-	495.83	595.00
17" 'Singapore'	Four 7J x 17" 'Singapore' with 225/45 R17 tyres, anti-theft wheel bolts and sports suspension (lowered by approx. 10mm)	-	-	○	-	-	-	-	570.83	685.00
	Four 7J x 17" 'Singapore' with 225/45 R17 tyres and anti-theft wheel bolts	-	-	-	○	-	-	-	237.50	285.00
18" 'Serron'	Four 8J x 18" 'Serron' with 225/40 R18 tyres and anti-theft wheel bolts	-	-	-	○ ¹	-	-	-	604.17	725.00
18" 'Durban'	Four 7½J x 18" 'Durban' with 225/40 R18 tyres and anti-theft wheel bolts	-	-	-	○ ²	-	-	-	654.17	785.00
19" 'Santiago' ³	Four 8J x 19" 'Santiago' with 235/35 R19 tyres and anti-theft wheel bolts	-	-	-	-	○	○	-	820.83	985.00
19" 'Pretoria'	Four 8J x 19" 'Pretoria' with 235/35 R19 tyres with anti-theft wheel bolts	-	-	-	-	-	-	○	745.83	895.00

¹ Not available in conjunction with 1.4 ltr TSI ACT engines. ² Only available in conjunction with 1.4 ltr TSI ACT engines. ³ Not available in conjunction with panoramic sunroof.

PERFORMANCE

GTI Performance pack	Additional 10 PS engine output, mechanical limited slip differential, 'Red' brake calipers with 'GTI' logo and larger diameter brake discs	-	-	-	-	-	○	-	829.17	995.00
Sport and Sound pack	Exhaust sound actuator for selected driver profile. Comfort sound – Normal and Eco mode, 'Deep Sporty sound' – Sport mode.	-	-	-	-	○	-	-	212.50	255.00

● Standard equipment ○ Optional equipment - Not available. Factory-fitted options are subject to availability and extended delivery.

EFFECTIVE FROM 4 NOVEMBER 2013. VAT IS CALCULATED AT 20%.

EXTERIOR

		S	BlueMotion	SE	GT	GTD	GTI	R	Basic RRP £ Excluding VAT	Total RRP £ Including VAT
Exterior badge deletion	Model and engine badging	0	-	0	0	-	-	-	No cost option	
	Engine badging only	0	-	0	0	-	-	-	No cost option	
Front fog lights	Including static cornering function	0	0	0	●	● ¹	● ¹	-	200.00	240.00
Gas discharge (Bi-xenon) dipped and main beam headlights	Including static cornering function, automatic range adjustment, dynamic curve lighting, headlight washers and low washer fluid warning light	-	-	0	0	-	-	-	666.67	800.00
	Including static cornering function, automatic range adjustment, dynamic curve lighting, headlight washers, low washer fluid warning light and LED daytime running lights. <i>Double 'U-shaped' LED daytime running lights on R models</i>	-	-	-	0	●	●	●	995.83	1,195.00
Special paint	Pure White	0	0	0	0	0	0	0	212.50	255.00
	Metallic/Pearl Effect	0	0	0	0	0	0	0	445.83	535.00
Premium paint	Oryx White	-	-	-	0	0	0	0	791.67	950.00
Tinted glass	Heat insulating rear tinted glass 65% light absorbing from B pillar backwards	-	-	0	●	●	●	●	179.17	215.00

¹ Front fog lights on GTD and GTI models incorporate LED technology, but do not feature static cornering function.

INTERIOR

Carpet mats	Front and rear	0	-	0	●	●	●	●	66.67	80.00
Load-through provision	Including rear centre armrest with 2 cup holders, forms a table when folded down	0	0	●	●	●	●	●	133.33	160.00
Folding front seat backrest	Backrest release on front passenger seat. <i>5-door models only</i>	0	0	0	0	0	0	-	129.17	155.00
Lumbar support for driver's and front passenger's seat		0	0	●	●	●	●	●	50.00	60.00
Steering wheel – multifunction leather trimmed	Multifunction steering wheel including leather trimmed gear knob and multifunction computer	0	0	●	●	●	●	●	337.50	405.00
	Including paddle shift for DSG gearbox only. <i>Only with DSG gearbox</i>	-	-	0	●	●	●	●	145.83	175.00
Upholstery – 'Vienna' leather¹	'Vienna' leather upholstery including heated front sports seats with manually adjustable lumbar support	-	-	0	-	-	-	-	1,737.50	2,085.00
	'Vienna' leather upholstery including heated front sports seats with manually adjustable lumbar support	-	-	-	0	-	-	-	1,554.17	1,865.00
	'Vienna' leather upholstery including heated front sports seats with manually adjustable lumbar support	-	-	-	-	0	0	0	1,416.67	1,700.00

¹ Some parts of leather interior will contain artificial leather.

INTERIOR (CONTINUED)

		S	BlueMotion	SE	GT	GTD	GTI	R	Basic RRP £ Excluding VAT	Total RRP £ Including VAT
Upholstery – 'Vienna' leather¹ featuring driver's front seat with electric 12-way adjustment	'Vienna' leather upholstery including heated front sports seats with adjustable lumbar support. <i>In lieu of under seat drawers. 5-door models only</i>	-	-	0	-	-	-	-	2,179.17	2,615.00
	'Vienna' leather upholstery including heated front sports seats with adjustable lumbar support. <i>In lieu of under seat drawers. 5-door models only</i>	-	-	-	0	-	-	-	1,987.50	2,385.00
Upholstery – 'Carbon'/'Nappa' leather¹	'Carbon/'Nappa' leather upholstery including heated front sports seats with embroidered 'R' logo and manually adjustable lumbar support	-	-	-	-	-	-	0	2,179.17	2,615.00
Winter pack	Headlight washers, heated front seats, heated windscreen washer jets and low washer fluid warning light	0	0	0	0	-	-	-	312.50	375.00
Winter pack in conjunction with leather upholstery	Headlight washers, heated windscreen washer jets and low washer fluid warning light	-	-	0	0	-	-	-	220.83	265.00
Winter pack in conjunction with Bi-xenon headlights	Heated front seats and heated windscreen washer jets	-	-	0	0	0	0	0	295.83	355.00
Winter pack in conjunction with leather upholstery and Bi-xenon headlights	Heated windscreen washer jets	-	-	0	0	0	0	0	204.17	245.00

¹ Some parts of leather interior will contain artificial leather.

IN-CAR ENTERTAINMENT AND COMMUNICATIONS

Advanced telephone connection	Storage compartment in front centre armrest with integrated USB socket for telephone charging. Connection to the vehicle's external aerial for improved reception	-	-	0	0	0	0	0	262.50	315.00
Discover Navigation touch-screen navigation/radio system	5.8" colour touch-screen control system for navigation, CD and radio functions. Preloaded European navigation data, 2D/2.5D map view, three calculated routes (Fast, Short, Eco), dynamic navigation based on TMC+, branded points of interest and Traffic Sign Display. <i>Includes navigation software updates for a period of three years, please contact your authorised Volkswagen retailer for full details</i>	-	-	0	●	0	0	0	625.00	750.00
Discover Navigation Pro touch-screen navigation/DVD radio system with integrated voice activation	Voice activated control system – responds to spoken voice commands for navigation functions. 8.0" colour touch-screen control system for navigation, DVD, CD and radio functions. 64 GB SSD hard drive. Preloaded European navigation data, 3D map view, three calculated routes (Fast, Short, Eco), dynamic navigation based on TMC+, branded points of interest, Traffic Sign Display, photo display from JPEG and PNG files and SD card reader x 2. <i>Includes navigation software updates for a period of three years, please contact your authorised Volkswagen retailer for full details.</i>	-	-	0	-	0	0	0	1,470.83	1,765.00
		-	-	-	0	-	-	-	970.83	1,165.00

IN-CAR ENTERTAINMENT AND COMMUNICATIONS (CONTINUED)

		S	BlueMotion	SE	GT	GTD	GTI	R	Basic RRP £ Excluding VAT	Total RRP £ Including VAT
'Dynaudio' soundpack	Including 10 channel digital amplifier, 400 watt output and 8 speakers	-	-	o	o	o	o	-	441.67	530.00
Voice activation	Spoken voice commands for telephone and navigation (when fitted) functions. <i>Standard on Discover Navigation Pro</i>	-	-	o	o	o	o	o	154.17	185.00

SAFETY AND SECURITY

Alarm	With interior protection	o	o	●	●	●	●	●	195.83	235.00
PreCrash preventive occupant protection	Tensioning of the front seat belts, closing of electric windows, closing of optional panoramic sunroof and preconditioning of brake systems should a critical driving situations be detected	o	o	●	●	●	●	●	112.50	135.00
Side airbag system, rear and rear seat belt warning	For rear occupants. Including seat belts with tensioners (for 2 rear outer seats) and optical warning for rear seat belts if unfastened, 5-door only	o	o	o	o	o	o	o	225.00	270.00

COMFORT AND CONVENIENCE

Climate control	2Zone electronic air conditioning with automatic air recirculation	-	-	o	o	●	●	●	341.67	410.00
Convenience pack	Automatic dimming interior rear-view mirror, automatic headlights on with coming/leaving home lighting function and rain sensor	o	o	●	●	●	●	●	79.17	95.00
Electric rear windows	5-door only	o	o	●	●	●	●	●	141.67	170.00
Keyless entry	Including Start/Stop button on centre console	o ¹	-	o	o	o	o	o	295.83	355.00
Mirror pack	Remote electrically foldable door mirrors, door mirror puddle lights and reverse activated kerb-view adjustment on passenger's door mirror	o	o	o	●	●	●	●	79.17	95.00
Panoramic sunroof	Electric, glass sliding/tilting including integrated roller blind. <i>Not with 19" 'Santiago' alloy wheels</i>	-	-	o	o	o	o	o	762.50	915.00
Removal of manual air conditioning		o	o	o	o	-	-	-	No cost option	
Smoking pack	Removable ashtray and cigarette lighter. <i>In lieu of 1 front cup holder</i>	o	o	o	o	o	o	o	12.50	15.00

1. Must be ordered in conjunction with electric rear windows.

● Standard equipment ○ Optional equipment - Not available. Factory-fitted options are subject to availability and extended delivery.

DRIVER'S ASSISTANCE

		S	BlueMotion	SE	GT	GTD	GTI	R	Basic RRP £ Excluding VAT	Total RRP £ Including VAT
Adaptive Chassis Control (DCC)	Variable suspension settings – choice of three settings: Sport, Comfort and Normal. <i>Not 105 PS and 122 PS engines</i>	-	-	o	o	o	o	o	679.17	815.00
Climate windscreen	Wireless electrically conductive layer in glass laminate. In Winter, accelerates defrosting and prevents fogging. In Summer, reflects solar radiation to reduce interior temperature. <i>Only in conjunction with advanced telephone connection</i>	-	-	o	o	o	o	o	245.83	295.00
Cruise control	With speed limiter	o	o	●	●	●	●	●	204.17	245.00
Driver Alert system	Audible and visual fatigue detection system. Monitors driving behaviour and journey time to recommend when to take a break	o	o	●	●	●	●	●	54.17	65.00
High Beam Assist	Automatic sensing for switching between dipped and main beam	-	-	o	o	o	o	o	116.67	140.00
Lane Assist¹	Camera controlled warning system should the vehicle drift out of its lane. Includes High Beam Assist	-	-	o	o	-	-	-	437.50	525.00
Lane Assist¹ in conjunction with Bi-xenon headlights with LED daytime running lights	Camera controlled warning system should the vehicle drift out of its lane. Includes Dynamic High Beam Assist	-	-	-	o ²	o	o	o ³	520.83	625.00
Multifunction computer⁴	With 3.5" TFT screen	o	o	●	●	-	-	-	41.67	50.00
Multifunction colour display	Colour display for multifunction computer	-	-	o	o	●	●	●	112.50	135.00
Parking sensors, front and rear	Ultrasonic, audible with optical parking display via vehicle's audio system	o	o	o	●	●	●	●	379.17	455.00
Park Assist	Sensor controlled steering aid to assist parallel or bay parking. Features optical parking display via vehicle's audio system	-	-	-	o	o	o	-	125.00	150.00
Park Assist including parking sensors, front and rear	Sensor controlled steering aid to assist parallel or bay parking and ultrasonic, audible parking sensors front and rear with optical parking display via vehicle's audio system	o	o	o	-	-	-	-	500.00	600.00
Rear-view camera	Displayed via the vehicle's audio system display	o	o	o	o	o	o	o	137.50	165.00

1. Includes Traffic Sign Recognition when ordered in conjunction with Discover Navigation Pro touch-screen navigation/DVD radio system. 2. Only available in conjunction with gas discharge (Bi-xenon) dipped and main beam headlights. 3. Must be ordered in conjunction with Discover Navigation Pro touch-screen navigation/DVD radio system. 4. Not available in conjunction with Multifunction steering wheel.

● Standard equipment ○ Optional equipment - Not available. Factory-fitted options are subject to availability and extended delivery.

ACCESSORIES

This is only a selection of the accessories available. For information on our complete range of accessories, please refer to the Volkswagen accessories brochure or visit www.volkswagenaccessories.co.uk

	Part number	Total RRP £ Including VAT	Total fitted RRP £ Including VAT
SPORT & STYLING			
Front spoiler ¹	5G0 071 606 GRU	270.00	-
Side skirt set ¹	5G0 071 685 GRU	355.00	-
Door sill trim – steel (3-door), 2 treadplates	5G0 071 303	-	114.00
Door sill trim – steel (5-door), 4 treadplates	5G0 071 303 A	-	134.00
Rear roof spoiler	5G0 071 644 GRU	315.00	-
ALLOYS			
Rotary alloy wheel (18") – anthracite ²	5G0 071 498 16Z	260.00	-
Blade alloy wheel (17") – black gloss ²	5G0 071 497 FZZ	220.00	-
TECHNOLOGY			
Plug & Play sound system	5G0 051 419	-	500.00
Nextbase DVD player	ZGB 000 035 404	315.00	-
TOURING			
Roof bars (3-door)	5G3 071 126	240.00	265.50
Roof bars (5-door)	5G4 071 126	240.00	265.50
Bicycle holder	6Q0 071 128 A	82.50	100.50
Volkswagen roof box – 340 litres – black	000 071 200	210.00	-
Surfboard holder	000 071 120 HA	98.50	116.50
Micro II bicycle carrier for the spare wheel well	5G2 071 105	545.00	-

	Part number	Total RRP £ Including VAT	Total fitted RRP £ Including VAT
CHILD SEATS			
Volkswagen G1 ISOFIX DUO Plus	5G0 019 909 A	255.00	-
COMFORT & PROTECTION			
Luggage compartment liner	5G0 061 160	45.00	-
Luggage net	5N0 065 111	50.00	-
Cargonizer	5G0 061 103	55.00	-
Rubber floor mats – front – black	5G2 061 502 82V	35.00	-
Rubber floor mats – rear – black	5G0 061 512 82V	30.00	-
Rear bumper protection – transparent	5G0 061 197	-	91.00
Mudflaps – front	5G0 075 101	-	74.00
Mudflaps – rear	5G0 075 111	-	74.00
Cobra vehicle tracking systems – CobraTrak Plus with 1 year subscription	ZGB 000 054 200 A	-	540.00
SERVICE & CARE			
Safety kit	000 093 059	18.00	-
Complete car care kit	000 096 355 B	35.00	-
Winter car care kit	000 096 352 E	12.50	-

All prices exclude customer and retailer installation unless otherwise stated and are valid until 14 January 2014 – for full details, please contact your authorised Volkswagen retailer. Choosing larger alloy wheels than standard size will require the purchase of tyres. Prices shown do not include the transfer of tyres. ¹ Price excludes painting and fitting. ² Price per wheel, excludes tyre and fitting.



VOLKSWAGEN WARRANTY AND SERVICE PLANS

ADDITIONAL WAYS TO KEEP YOUR PERFECT CAR, PERFECT... FOR LONGER

THE VOLKSWAGEN EXTENDED WARRANTY

If you order the Volkswagen Extended Warranty as an option when buying your new Golf, then you get the 100% Volkswagen Warranty and you can continue to enjoy comprehensive Volkswagen protection against many unforeseeable repair costs. Designed to your needs, you can purchase an extra one or two year's warranty up to a maximum of five years or 90,000 miles.

CHOOSE ONE OF THE FOLLOWING TWO OPTIONS:

	Basic Recommended Retail £	VAT £	Total Recommended Retail £
Four years	170.83	34.17	205.00
Five years	408.33	81.67	490.00

This covers up to four years or 75,000 miles, whichever comes soonest. The cover includes a two-year unlimited mileage warranty and up to 75,000 miles in the third and fourth years.

This covers up to five years or 90,000 miles, whichever comes soonest. The cover includes a two-year unlimited mileage warranty and up to 90,000 miles in the third, fourth and fifth years.

For further details please visit www.volkswagen.co.uk or speak to your authorised Volkswagen retailer.

FIXED PRICE SERVICE PLAN

We offer Fixed Price Service Plans to cover all new models for up to three years or 30,000 miles. Your car will be in the hands of Volkswagen trained technicians who use specialist Volkswagen tools, technology and Volkswagen original parts, and all parts and labour are guaranteed for two years. What's more, if you decide to sell your car, it'll take the plan with it to its new owner who will know, from Volkswagen stamps in the service book, that it was valued for more than its looks alone.

3-year/30,000 miles (whichever is soonest) service plan comprising:

12 months/10,000 miles: Oil change service
24 months/20,000 miles: Interval service (including oil change)
36 months/30,000 miles: Inspection service (including oil change) Brake fluid change

For pricing and further details, please consult your authorised Volkswagen retailer.

THE MAGIC OF MORE CAR FOR YOUR MONEY

(and we're allowed to tell you about it)



Model shown is Golf S 122 PS with optional metallic paint.

Finance



Cost of car

Deposit
as little as one
repayment

Amount to finance
18 to 42 fixed
monthly repayments

Optional final payment
You have three options at the
end of your agreement



Solutions from Volkswagen Finance offers you flexible competitive rates and a finance plan that's completely built around you. Because it allows you to leave paying for some of the car's value to the very end, you can lower your monthly repayments... allowing you to get more car for your money. At the end of the agreement you also get three options to suit you. Solutions. Not smoke and mirrors, just brilliant, flexible finance. **(There, the secret's out!)**

Test drive some numbers with our finance calculator by scanning this QR code with your mobile device.



ENVIRONMENTAL INFORMATION

PETROL ENGINES	Output, PS	CO ₂ emission, g/km	Trim level(s)	Urban*	Extra-urban*	Combined†
1.2 ltr TSI	85	113	S	47.9/5.9	67.3/4.2	57.6/4.9
1.2 ltr TSI	105	114	S	47.9/5.9	65.7/4.3	57.6/4.9
1.2 ltr TSI DSG (7-spd)	105	115	S	48.7/5.8	62.8/4.5	56.5/5.0
1.4 ltr TSI (3-door)	122	120	S, SE	42.8/6.6	65.7/4.3	54.3/5.2
1.4 ltr TSI (5-door)	122	123	S, SE	41.5/6.8	64.2/4.4	53.3/5.3
1.4 ltr TSI DSG (7-spd)	122	116	S, SE	45.6/6.2	65.7/4.3	56.5/5.0
1.4 ltr TSI ACT (3-door)	140	109	GT	48.7/5.8	67.3/4.2	60.1/4.7
1.4 ltr TSI ACT (5-door)	140	112	GT	47.9/5.9	65.7/4.3	58.9/4.8
1.4 ltr TSI ACT DSG (7-spd)	140	110	GT	48.7/5.8	68.9/4.1	60.1/4.7
2.0 ltr TSI	220	139	GTI	37.7/7.5	55.4/5.1	47.1/6.0
2.0 ltr TSI DSG	220	148	GTI	34.9/8.1	53.3/5.3	44.1/6.4
2.0 ltr TSI	230	139	GTI with optional Performance pack	37.7/7.5	55.4/5.1	47.1/6.0
2.0 ltr TSI DSG	230	149	GTI with optional Performance pack	34.9/8.1	52.3/5.4	44.1/6.4
2.0 ltr TSI	300	165†	R	30.1/9.4†	47.9/5.9†	39.8/7.1†
2.0 ltr TSI DSG	300	159†	R	32.1/8.8†	47.9/5.9†	40.9/6.9†

DIESEL ENGINES

1.6 ltr TDI	90	98	S	61.4/4.6	85.6/3.3	74.3/3.8
1.6 ltr TDI	105	99	S, SE	61.4/4.6	85.6/3.3	74.3/3.8
1.6 ltr TDI DSG (7-spd)	105	102	SE	61.4/4.6	80.7/3.5	72.4/3.9
1.6 ltr TDI	110	85	BlueMotion	74.3/3.8	94.2/3.0	88.3/3.2
2.0 ltr TDI	150	106	SE, GT	56.5/5.0	78.5/3.6	68.9/4.1
2.0 ltr TDI DSG	150	119	SE, GT	52.3/5.4	68.9/4.1	62.8/4.5
2.0 ltr TDI	184	109	GTD	55.4/5.1	76.3/3.7	67.3/4.2
2.0 ltr TDI DSG (3-door)	184	119	GTD	51.4/5.5	70.6/4.0	62.8/4.5
2.0 ltr TDI DSG (5-door)	184	122	GTD	49.6/5.7	68.9/4.1	60.1/4.7

A guide on fuel economy and CO₂ emissions which contains data for all new passenger car models is available at any point of sale free of charge. Fuel consumption and CO₂ figures are obtained under standardised EU test conditions (Directive 93/116/EEC). This allows a direct comparison between different manufacturer models but may not represent the actual fuel consumption achieved in 'real world' driving conditions. More information is available on the Volkswagen website at www.volkswagen.co.uk and at www.vco.gov.org. CO₂ is the main greenhouse gas responsible for global warming. * Fuel consumption figures shown are mpg/ltr per 100km for the Urban, Extra-urban and Combined fuel cycles in accordance with EU Directive 93/116/EEC. † The fuel consumption and CO₂ figures quoted are provisional figures which have yet to be confirmed. A change to the CO₂ figure may result in a change to the Manufacturer's Recommended 'On the road' Retail price. Please consult your Volkswagen retailer for full details.

VEHICLE EXCISE DUTY (VED)

On 1 May 2009, there was a change to the Vehicle Excise Duty (VED) tax bands. Cars are taxed according to their CO₂ emissions, in bands A to M.

All vehicles first registered on, or after, 1 March 2001 are subject to a new form of VED (Road Fund Licence). This new duty is based upon the type of fuel the vehicle uses and its carbon dioxide (CO₂) emissions level, measured in grams per kilometre (g/km). To help you identify the duty you will pay, the DVLA has created thirteen categories for petrol and diesel engines. Increased weight of a vehicle, including higher trim levels and the addition of options will have a detrimental influence on the level of fuel consumption and CO₂ emissions produced.

The CO₂ and fuel consumption figures are obtained from tests on a representative vehicle of the type, conducted and approved in accordance with Council Directive 80/1268/EEC as amended by Directive 1999/100/EC (or later) on the approximation of the laws of the member states relating to the carbon dioxide emissions and the fuel consumption of motor vehicles.

VED band 'First year rate'

As of 1 April 2010, anyone buying a new car will pay a 'First year rate' of VED for the first Road Fund Licence. The chart below shows the VED bands and the charges which are levied:

VED band	CO ₂ emissions (g/km)	Petrol/Diesel VED £	Petrol/Diesel total 'On the road' costs £
A	Up to 100	0.00	605.00
B	101-110	0.00	605.00
C	111-120	0.00	605.00
D	121-130	0.00	605.00
E	131-140	125.00	730.00
F	141-150	140.00	745.00
G	151-165	175.00	780.00
H	166-175	285.00	890.00
I	176-185	335.00	940.00
J	186-200	475.00	1,080.00
K	201-225	620.00	1,225.00
L	226-255	840.00	1,445.00
M	Over 255	1,065.00	1,670.00

The total 'On the road' costs above include the applicable 'First year rate' VED charge plus the 'On the road' costs as detailed below:

Additional 'On the road' costs

	Costs £
Delivery to retailer	438.33
Number plates	20.00
VAT	91.67
Vehicle first registration fee	55.00
Total	605.00

VED band 'Standard rate'

For the subsequent year's VED (Road Fund Licence), vehicle owners will then pay the 'Standard rate' of VED as shown in the table below:

VED band	CO ₂ emissions (g/km)	Petrol/Diesel VED £
A	Up to 100	0.00
B	101-110	20.00
C	111-120	30.00
D	121-130	105.00
E	131-140	125.00
F	141-150	140.00
G	151-165	175.00
H	166-175	200.00
I	176-185	220.00
J	186-200	260.00
K*	201-225	280.00
L	226-255	475.00
M	Over 255	490.00

* Band K includes cars that have a CO₂ figure over 225g/km, but were registered before 23 March 2006.

Six months' VED (Road Fund Licence)

As of 1 April 2010, six months' Road Fund Licence will not be available for some vehicles at first registration. VED rate for bands A-D is zero and will not be eligible for a six-month Road Fund Licence at first registration. VED rate for bands E-G will be eligible for a six-month Road Fund Licence at first registration. VED rate for bands H-M will not be eligible for a six-month Road Fund Licence at first registration.

Subsequent year's VED (Road Fund Licence)

Vehicles with a VED rate of £55 or above will be eligible for a six-month Road Fund Licence.

VED 'First year rate' refund

Refunds on a vehicle's Road Fund Licence in bands H-M will only be calculated on the basis of the 'First year rate' if the vehicle has been stolen, scrapped or moved into a tax class where no VED is payable (e.g. cars for the registered disabled).

If the refund is being applied for because the vehicle has been sold, exported or taken off the road, it will be calculated according to the 'Standard rate' of VED applicable to that vehicle.

THE VOLKSWAGEN SERVICE, FOR YOUR PEACE OF MIND

THE VOLKSWAGEN WARRANTY

THREE-YEAR WARRANTY

All Volkswagen passenger cars come with a three-year/60,000 miles warranty, which protects your car against the failure of most technical and electrical components due to manufacturing defects. This comprises a two-year manufacturer's warranty with unlimited mileage plus a further one-year/60,000 miles (whichever is soonest) Retailer Warranty*. Should the mileage exceed 60,000 miles within the first two years, the manufacturer's two-year warranty will still be valid. Full details of the three-year warranty are available from your authorised Volkswagen retailer or repairer.

BODY PROTECTION WARRANTY

The internal body sections and panels of the Golf are covered against rusting through from the inside for 12 years. Naturally, the vehicle must be cared for in compliance with the operating instructions. Please consult your authorised Volkswagen retailer or repairer for full warranty details.

THREE-YEAR PAINTWORK WARRANTY

This latest warranty, pioneered by Volkswagen, really provides you with the widest possible cover on a new car.

There are no special conditions attached and paintwork manufacturing defects will be rectified without charge. Naturally, during the warranty period the car must be cared for in compliance with the operating instructions.

EXTENDED WARRANTY

If you order the Volkswagen Extended Warranty as an option when buying your new Golf then you get the 100% Volkswagen Warranty and you can continue to enjoy comprehensive Volkswagen protection against many unforeseeable repair costs. Designed to your needs, you can purchase an extra one or two year's warranty up to a maximum of five years or 90,000 miles.

SERVICE INTERVALS

Volkswagen are pleased to offer you a choice on how your Golf is serviced. The appropriate selection is entirely dependent on how the car is likely to be driven and its general use. To help you identify which type of service would be most suitable, please refer to the following guide. The Fixed Service is recommended for vehicles that will cover less than 10,000 miles in 12 months and if the vehicle is likely to be used in the following way:

- Predominantly urban driving, short journeys with frequent cold starts.
- Activities regularly producing high engine loading, e.g. frequent hill climbs, driving with vehicle fully loaded and towing.
- Uneconomical driving style using high rpms with heavy acceleration and heavy braking.

SERVICE INTERVALS (CONTINUED)

The service intervals for the Fixed Service are as follows:

- Oil change service – Every 10,000 miles/1 year (whichever is soonest).
- Interval service – Every 20,000 miles/2 years (whichever is soonest).
- Inspection service – Every 40,000 miles/3 years (whichever is soonest).

The Flexible Service is recommended for vehicles with a daily mileage of more than 25 miles where the vehicle is driven regularly mainly on longer distance journeys. The vehicle is driven mainly at a constant speed with minimum vehicle and engine loading, minimal towing and driven in an economical manner. With the Flexible Service the vehicle can cover anywhere between 10,000[†] and a maximum of 18,000[†] miles or 24 months (whichever is soonest) between oil changes. Inspection service is typically in the third year of ownership and thereafter every second year, for vehicles with an approximate annual mileage of 10,000 miles. Please consult your authorised Volkswagen retailer or repairer for advice and full details.

VOLKSWAGEN INSURANCE[‡]

We want you to start enjoying your new car from day one and thanks to Volkswagen Insurance complimentary seven day cover, you can. Call free on 0800 316 7892 (lines are open Monday to Friday 8am – 9pm and Saturday 9am – 5pm), provide a few details and a cover note will be sent to your retailer. They will then tax your car and you can drive it away.

VOLKSWAGEN ENSURANCE

Get three years' Volkswagen Ensurance cover for free.

Another great benefit of being a Volkswagen driver. If your Volkswagen was damaged in an accident, wouldn't you want it fixed by a Volkswagen trained technician using only genuine Volkswagen parts? Ensurance is Volkswagen's accident and repair cover which does exactly that. It works alongside your main comprehensive motor insurance policy no matter who you are insured with, to make sure you get the quality repair and service you would want. If you're involved in an accident or your car is stolen, just one call to us and we'll look after your claim from start to finish ensuring your Volkswagen is restored to the highest standard.

VOLKSWAGEN ENSURANCE (CONTINUED)

Activate your cover and benefit from:

- A guarantee that your Volkswagen will be repaired in a Volkswagen Insurance approved repairer, by Volkswagen trained technicians, using only genuine Volkswagen parts and paints.
- A dedicated Claims Manager available 24-hours a day to manage your claim, liaising with your insurer and the repairer, so you don't have to.
- Help to recover any uninsured losses using our Legal Expenses Cover.
- Online claims tracking so you can keep up to date with the status of any claim.

Volkswagen Ensurance is free to all Volkswagen customers for three years and it only takes a minute to get cover.

To find out more and to activate your cover, visit volkswagen-ensurance.co.uk

VOLKSWAGEN FINANCE[‡]

Volkswagen Finance specialises in providing funding solutions for Volkswagen drivers. Whether your Volkswagen is for private or business use, you can choose from a range of funding options.

- Solutions – a personal contract plan
- Hire purchase
- Lease purchase
- Finance lease
- Contract hire

With all Volkswagen Finance products you can choose a fixed-cost maintenance plan to help you budget for your servicing and maintenance costs. No matter what finance product you choose, your local Volkswagen retailer will be able to provide you with a personalised quote that could meet your budget and vehicle needs.

VOLKSWAGEN ROADSIDE ASSISTANCE

Every new car is registered for Volkswagen Roadside Assistance for one year except the Touareg and Phaeton which are registered for three years. This provides vehicle roadside and home recovery in the unlikely event of a breakdown in the UK and Europe (subject to conditions). Volkswagen Roadside Assistance can also be purchased for subsequent years. For full details, please contact your authorised Volkswagen retailer.

PRICES AND SPECIFICATIONS

The prices and specifications contained in this price list are for information purposes only as our products are continually updated and changes may be made to the prices and specifications at any time. If you require any specific feature, please consult your authorised Volkswagen retailer who is regularly updated with any change in specification. Prices and specifications are subject to change without notice.

Following the announcement of a price increase, any vehicle order which can be accepted into the factory production system before the effective date of the price increase will be supplied at the current price, even if built and delivered after the date on which the increase became effective.

Note: We would like to advise you that telephone calls to Volkswagen Customer Care may be monitored and recorded as part of our training and quality assurance processes. All our monitoring and recording processes meet Ofcom regulations.

* All warranty work must be completed by an authorised Volkswagen retailer or repairer.

† Please note that mileages are approximate as the service indicator system uses kilometres as the distance measurement.

‡ Volkswagen Insurance is a trading name of Volkswagen Insurance Service (Great Britain) Limited, an appointed representative of Volkswagen Financial Services (UK) Limited, Brunswick Court, Yeomans Drive, Blakelands, Milton Keynes MK14 5LR. Registered in England number 2835230. Volkswagen Insurance is sold, underwritten and administered by Allianz Insurance plc registered in England number 84638. Registered office 57 Ladymead, Guildford, Surrey GU1 1DB. Volkswagen Financial Services (UK) Limited and Allianz Insurance plc are authorised and regulated by the Financial Services Authority. Volkswagen Financial Services (UK) Limited and Allianz Insurance plc are not part of the same corporate group.

‡ Volkswagen Finance is a trading name of Volkswagen Financial Services (UK) Limited. An offer of finance depends on certain conditions. Available to people over 18 in the UK only.

GOLF. DAS AUTO.

**Issued by Volkswagen Marketing, Volkswagen (UK)
Volkswagen Information Service
Freephone: 0800 333 666
PVW722GPLNEW**

This price list can be viewed or downloaded in pdf format at:
volkswagen.co.uk



facebook.com/VolkswagenUK



[@UKVolkswagen](https://twitter.com/UKVolkswagen)



youtube.com/UKVolkswagen