



Das Auto.

The Polo



Designed to impress. Built to last.

Striking design, uncompromising quality and exciting engines. That's what you can expect in the fabulous Polo, the tough little performer that's packed with big car credentials. Stylish, elegant and understated, the Polo is designed to stand the test of time, beautifully crafted inside and out, and testament to Volkswagen's lasting quality standards. Built for the long haul and designed to endure, the Polo is not just for now. It's for keeps.



Model shown is Polo Match Edition.

Take time to admire your Polo. From every angle.

The Polo will certainly turn heads wherever it goes. But it's not just about looks. It's about performance, too. And with a choice of powerful engines, delivering impressive economy with high pulling power, there's one thing to look forward to above all else. The ultimate in driving fun.

* Please see the Engines section for CO₂ emissions and fuel consumption figures.



Model shown is Polo SEL with optional 17" 'Boavista' alloy wheels and metallic paint.

Explore the city.



Model shown is Polo SEL with optional 17" 'Boavista' alloy wheels, Convenience pack and metallic paint.



**Or discover
the great outdoors.**

Model shown is Polo SEL with optional 17" 'Boavista' alloy wheels.

**Either way,
you'll always
feel at home.**



Models shown are Polo SEL with optional 17" 'Boavista' alloy wheels and rear tinted windows;
Polo Match Edition with optional 16" 'Knight' alloy wheels and metallic paint.

Model shown is Polo SEL with optional
17" 'Boavista' alloy wheels and metallic paint.

Exterior.

Dynamic, self-assured, confident, the Polo exudes a sporty elegance designed to stand the test of time, rather than bow to fashion fads. Powerful lines accentuate its athletic character, while specific details, such as the stylish rear lights, define its classic style. A selection of individually designed alloy wheels gives you the opportunity to enhance the sporty feel, and contributes to the overall precision handling. This is a car you cannot help but notice, for all the right reasons.



Stylish **halogen headlights** blend seamlessly with the chrome trimmed radiator grille louvre, indicative of the Polo's uncompromising attention to detail. Providing better vision in all weather, they also include permanent running lights (not BlueMotion models) so that you can be seen easily during the day. Model shown is Match Edition with optional Winter pack.



The **electrically heated and adjustable body-coloured door mirrors with integrated indicators** enhance the streamlined bodyshape and help improve the aerodynamics. Standard on all models except S and R-Line Style. 'Gloss Black' door mirrors are standard on BlueGT models.



The striking **rear lights** blend perfectly with the rear design, highlighting its stylish contours.



Curved **body-coloured door handles** are not only easy-to-use, but flow seamlessly into the overall design, exuding quality and solidity. Standard on all models except S.



The **front grille** with attractive chrome trimmed radiator grille louvre is a distinctive characteristic of the Polo, contributing to its sporty elegance and adding a touch of quality and charisma. Standard on Match Edition, SEL, R-Line Style, R-Line and BlueGT models.



Rear tinted windows from the B pillar back reduce sunlight by up to 65%, helping to ensure a pleasant temperature for rear passengers, and enhancing the exterior's sporty appeal. Standard on Match Edition and R-Line and optional on SEL, R-Line Style, BlueGT and GTI models.



The **electric glass sunroof**, is just as eye-catching from the outside as it is from the inside. It fills the interior with additional natural light, providing an uninterrupted view of the sky overhead. Optional on all models except S, BlueMotion, R-Line Style and BlueGT.

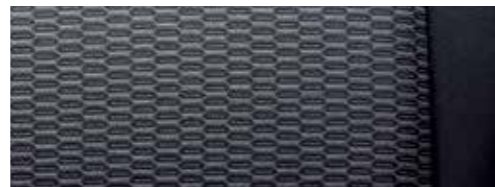
**Enduring quality,
leading performance.**



Model shown is Polo SEL with optional 17" 'Boavista' alloy wheels and rear tinted windows.

The Polo S.

The entry level Polo S is packed with equipment and provides a truly impressive package. For a start, body-coloured bumpers and side sills, halogen headlights and heat insulating green tinted glass provides an impressive exterior. Inside, 'Cirrus' upholstery and 'High Gloss Black' decorative inserts give an exclusive look, and features include electric front windows, central locking and speed-sensitive power-assisted steering. White instrument lighting, a three-spoke steering wheel and vanity mirrors complement the interior aesthetics, while the driver's seat with height adjustment and RCD 310 DAB radio/MP3 compatible CD player with six speakers and AUX-in socket for connection to an external multimedia source (e.g. iPod or MP3 player) enhance your driving enjoyment. Other features include a folding rear seat backrest, heated rear windscreen, luggage compartment cover and lighting, providing practical extras to keep you comfortable. Finally, a tyre pressure loss indicator alerts the driver via a warning in the dashboard of any change in tyre pressure, providing additional peace of mind on every journey. Specify the Polo S A/C and you get all the standard equipment of the S complete with manual air conditioning for year round comfort.



'Cirrus' upholstery features a sporty honeycomb design and is both robust and hard-wearing, its dark, easy-to-clean surface ensuring the fabric stays as new for a long time to come.



The height-adjustable driver's seat can easily be adjusted to suit your optimum driving position, ensuring you reach your destination relaxed and in comfort.



The RCD 310 DAB radio/MP3 compatible CD player features six speakers with an output of 6 x 20 watts. The DAB digital radio receiver delivers a much wider listening choice, with an ever increasing number of digital radio stations ensuring that you can always find something that suits your taste. The sound quality of DAB radio is excellent and it also displays additional information transmitted by the radio station, e.g. song title and artist.



14 inch steel wheels with 175/70 R14 tyres and full size wheel trims, feature a robust seven spoke design, adding a sporty touch.



Choose the Polo S A/C and easy-to-use manual air conditioning comes as standard, ensuring a pleasant temperature throughout the vehicle.



Understated elegance and classic styling is present both inside and out in the Polo S, with high quality materials and attention to detail providing the perfect mix of style and comfort. Interior shown is Polo S A/C.

The Polo Match Edition.



Model shown is Polo Match Edition 1.4 litre with optional multifunction steering wheel.

The Polo Match Edition.

Following on from the impressive specification of the S, the Match Edition offers an even higher level of equipment ensuring total style and comfort. Sporty 15 inch seven spoke 'Castille' alloy wheels, 'Gloss Black' radiator grille with chrome trimmed louvre, body-coloured door mirrors and door handles, rear tinted windows and front fog lights give a contemporary look to the exterior. This is echoed inside by attractive and extremely durable 'Strata' upholstery and 'Matt chrome' detailing on the air vents, gear lever gaiter surround, internal door handles and handbrake button. A whole range of features helps ensure maximum driving pleasure, including manual air conditioning which provides your desired interior temperature, an RCD 310 DAB radio/MP3 compatible CD player with six speakers provides exceptional acoustics, an MDI (Multi Device Interface) offers USB and iPod connectivity, while hands-free calls can be made and received via the Bluetooth connection touch phone-kit*. And if that's not enough to ensure total driving enjoyment, there are also front and rear electric windows (rear on five-door models only), an alarm with interior protection, height-adjustable driver and front passenger seats, a tyre pressure loss indicator, easy entry sliding front seats (three-door models only), a split folding rear seat backrest providing practical space, electrically heated and adjustable door mirrors, not to mention remote central locking, illuminated vanity mirrors and front and rear reading lights. Cruise control and rear parking sensors complete the impressive specification of the Polo Match Edition – traditionally a feature of executive vehicles, cruise control keeps your selected speed constant at speeds of over 19mph, enabling you to relax on longer journeys, without having to keep an eye on your speedometer, while rear parking sensors emit acoustic signals, alerting you to obstacles in your way when parking. The closer you are to an object, the faster the sound frequency. They also offer a visual display of the vehicle's proximity to obstacles on the screen of the vehicle's radio system.

* Phones must be Bluetooth HFP (Hands Free Profile) compatible, please contact your authorised Volkswagen retailer for specific phone compatibility.



Rear parking sensors assist in parking manoeuvres by emitting an audible warning alerting the driver to any obstacles in the way: the closer you are to an obstacle the faster the sound frequency. An optical parking display via the vehicle's audio display is also a handy addition.



Cruise control maintains your chosen speed over 19mph, enabling you to relax on longer journeys without having to keep an eye on your speedometer.



The Bluetooth touch phone-kit* allows connection for HFP (Hands Free Profile) phones, enabling you to make and receive phone calls safely, with phone book and call information† displayed on the 2.8 inch colour display. It also allows connection of two mobile phones at once, as well as voice control and a speech-to-text facility for receipt, display and listening to text messages and e-mails.

* Functionality is dependent on phone capability. Please note, the Bluetooth touch phone-kit displays a music icon that does not have any functionality. Connection to an external multimedia source (e.g. iPod and MP3 player) is possible via the AUX-in socket or MDI (Multi Device Interface). Interior shown is Match Edition with optional multifunction leather trimmed steering wheel.



'Castille' 6J x 15 inch alloy wheels with 185/60 R15 tyres and anti-theft wheel bolts add a contemporary finishing touch to the exterior.



The MDI (Multi Device Interface), located conveniently in the glovebox, allows you to connect to an external multimedia source, such as USB or iPod, which you can operate via the vehicle's radio or optional navigation/radio system.



Front fog lights integrated into the front bumper are both attractive and stylish. They also provide better visibility in poor weather conditions.



Subtle details such as the air vent surrounds, internal door handles, gear lever gaiter surround and handbrake button are highlighted in 'Matt chrome' to create unique interior styling. Interior shown is Polo Match Edition in Titan Black 'Strata' cloth upholstery (also available in Seashell Beige) with optional front centre armrest, electronic climate control air conditioning, convenience pack and metallic paint.

The Polo SEL.

If you want a car that goes one step further then the Polo SEL is the one for you. To start with, 16 inch 'Navarre' alloy wheels add a truly individual look to the exterior, enhanced by body-coloured door handles and door mirrors, front fog lights and a 'Gloss Black' radiator grille with chrome trimmed louvre and chrome trimmed front air intake surround. Inside the Polo SEL, the luxury continues with a three-spoke split-grain leather trimmed steering wheel featuring a chrome insert, leather trimmed gear knob and handbrake grip and front footwell illumination. The RCD 310 DAB radio/MP3 compatible CD player with six speakers offers great acoustics and crystal clear digital audio broadcasts, plus there's also an MDI (Multi Device Interface) in the glovebox providing USB and iPod connectivity and a hands-free touch phone-kit* for Bluetooth connectivity to make and receive calls. The height-adjustable driver and front passenger seats ensure comfort on long journeys with three-door models benefiting from easy entry seats, while the multifunction computer is a particularly useful addition, providing essential information as you drive, such as instant and average fuel consumption, fuel range, exterior temperature and clock. Manual air conditioning ensures an ambient temperature throughout and a handy tyre pressure loss indicator displays any loss in tyre pressure. Completing the picture is a front centre armrest with storage compartment, drawers under the front seats and high quality carpet mats in the front and rear.

* Phones must be Bluetooth HFP (Hands Free Profile) compatible, please contact your authorised Volkswagen retailer for specific phone compatibility. Please note, the Bluetooth touch phone-kit displays a music icon that does not have any functionality. Connection to an external multimedia source (e.g. iPod and MP3 player) is possible via the AUX-in socket or MDI (Multi Device Interface).



Alarm with remote central locking and interior protection provides the Polo SEL with additional security when unattended. Should an unauthorised attempt be made to gain access to the vehicle, intelligent sensors activate the alarm. In addition, the system provides an engine immobiliser, tow-away protection and a back-up horn for additional peace-of-mind.

The **MDI (Multi Device Interface)** connects you to external audio sources, such as USB or iPod, which you can operate via the radio or optional navigation/radio system.



The **multifunction computer** displays essential information as you drive, such as instant and average fuel consumption, fuel range, exterior temperature and clock.

'Navarre' 7J x 16 inch alloy wheels with 215/45 R16 tyres and anti-theft wheel bolts complements the overall design of the Polo SEL perfectly, adding a truly individual touch.

In the event of a change in tyre pressure, the **tyre pressure loss indicator** alerts the driver via a warning in the dashboard. Not only does correct tyre pressure ensure a high degree of safety, but it also helps extend the life of the tyres and reduces fuel consumption.



Equipment and styling combine in harmony to produce an interior which exudes comfort and practicality, ensuring that every journey is a pleasurable experience. Interior shown is **Polo SEL** in Seashell Beige 'Strata' cloth upholstery (also available in Titan Black) with optional electronic climate control air conditioning and metallic paint.

The Polo BlueMotion. Cleaner, greener and kinder to your wallet.



Model shown is Polo BlueMotion with optional metallic paint.

The Polo BlueMotion.

The Polo BlueMotion is a car that offers the highest levels of economy, exemplary environmental credentials and an aerodynamic body which is styled to turn heads. It has intelligently refined existing technology, and uses a 'BlueMotion' styling pack, as well as dynamic lines and enhanced aerodynamics to reduce the vehicle's air resistance. When combined with engineering refinements such as low rolling resistance tyres, this helps produce exceptional economy without compromising on comfort, safety or looks. Innovative technology such as the Start/Stop function momentarily switches off the engine when the vehicle is stationary, in neutral and the clutch disengaged. This is notified to the driver via the multifunction computer which also displays a visual gear change recommendation for improved fuel consumption. Battery regeneration is achieved by recuperating energy created during braking and deceleration, boosting the alternator voltage which in turn recharges the battery. During the acceleration phase it is possible to reduce the alternator load which improves economy. A combination of all these refinements delivers a package that offers outstanding economy up to 80.7mpg over the Combined fuel cycle*. The 1.2 litre TDI 75 PS engine with DPF (Diesel Particulate Filter) also ensures CO₂ emissions are an impressively low 91g/km. This places it in Vehicle Excise Duty band A, making the Polo BlueMotion exempt from the annual Road Fund Licence.

However, despite all the refinements to make the BlueMotion such an economical car, there really hasn't been any compromise on standard equipment. The BlueMotion builds over the already well equipped Polo S, yet is enhanced further with the choice of unique 'Blue Merlin' or 'Cirrus' cloth upholstery and 'Matt chrome' touches throughout the cabin. There is also an array of extra functionality to ensure your total comfort, such as manual air conditioning, cruise control, electrically heated and adjustable door mirrors, front centre armrest and a leather trimmed three-spoke steering wheel. In-car entertainment and communications are provided by the RCD 310 DAB radio/MP3 compatible CD player with AUX-in socket for connection to an external multimedia source, while calls can be safely made with Bluetooth connection using the hands-free touch phone-kit†. We've not forgotten about your safety either, fitting remote central locking, an alarm with interior protection, rear parking sensors, a tyre pressure loss indicator and a tyre repair kit (in lieu of steel spare wheel) as standard. Externally the BlueMotion is distinguished by 15 inch 'Greenland' alloy wheels with 185/60 R15 low rolling resistance tyres, front fog lights, uniquely shaped bumpers, side skirts and spoiler and a unique front grille immediately distinguishable as a BlueMotion.

* Please see the Engines section for CO₂ emissions and fuel consumption figures.

† Phones must be Bluetooth HFP (Hands Free Profile) compatible, please contact your authorised Volkswagen retailer for specific phone compatibility.

Please note, the Bluetooth touch phone-kit displays a music icon that does not have any functionality. Connection to an external multimedia source (e.g. iPod and MP3 player) is possible via the AUX-in socket.



The multifunction computer provides useful statistics about your journey, such as exterior temperature, average and current fuel consumption, average speed and estimated distance to refuelling. It also includes a visual gear change recommendation for improved fuel consumption.



The rear roof spoiler not only enhances the BlueMotion's dynamic lines but also helps to reduce the vehicle's air resistance, and in turn reduces fuel consumption.



The unique 'BlueMotion' badge at the rear symbolises its environmental credentials. For more information on BlueMotion Technologies, please see the Environment section.



'Greenland' 5 1/2 x 15 inch light alloy wheels with 185/60 R15 low rolling resistance tyres help to reduce the BlueMotion's fuel consumption.

The stylish interior of the Polo BlueMotion in Blue/Titan Black 'Blue Merlin' cloth upholstery features 'Matt chrome' touches to the air vents and gear lever gaiter surround, handbrake button and the internal door handles. There is also a choice of 'Cirrus' cloth upholstery for that extra touch of individuality. Interior shown is Polo BlueMotion with optional electronic climate control air conditioning, Convenience pack, smoking pack and metallic paint.

The Polo R-Line Style.

Stylish, sporty and economical, the Polo R-Line Style packs great looks, but with a level of equipment and engines that makes it even more affordable and especially accessible to younger drivers.

As you'd expect, the sporty exterior features dynamic R-Line styling, with distinctive front and rear bumpers, side skirts and a bespoke radiator grille with the unique 'R-Line' badging creating a strong visual appeal. 16 inch 'Rivazza' alloy wheels, front fog lights with static cornering function and body-coloured door handles and mirrors with integrated indicators add character and style. Inside, the impressive range of features includes a Bluetooth touch phone-kit*, multifunction computer and RCD 310 DAB radio/MP3 compatible CD player with six speakers and AUX-in socket for connection to an external multimedia source, such as iPod or MP3 player, enabling you to play your favourite sounds.



The Bluetooth touch phone-kit* allows connection for HFP (Hands Free Profile) phones, enabling you to make and receive phone calls safely, with phone book and call information† displayed on the 2.8 inch colour display. It also allows connection of two mobile phones at once, as well as voice control and a speech-to-text facility for receipt, display and listening to text messages and e-mails.

* Phones must be Bluetooth HFP (Hands Free Profile) compatible, please contact your authorised Volkswagen retailer for specific phone compatibility.
† Functionality is dependent on phone capability.

Please note, the Bluetooth touch phone-kit displays a music icon that does not have any functionality. Connection to an external multimedia source (e.g. iPod and MP3 player) is possible via the AUX-in socket or optional MDI (Multi Device Interface).



The specially designed front and rear bumpers, side skirts and spoiler exude sporting appeal, creating the dynamic look of the Polo R-Line Style. The unique 'R-Line' badge on the front radiator grille announces the distinctive character of the Polo R-Line Style, while front fog lights with static cornering function ensure better illumination and visibility in bad weather, and sit seamlessly either side of the front air intake. Model shown is Polo R-Line Style with optional Candy White non-metallic paint.



Attractive 'Cirrus' upholstery is durable and hard-wearing, adding contemporary style to the interior.



The body-coloured door mirrors with integrated indicators enhance the clean lines of the Polo R-Line Style.



Eye-catching 16 inch 'Rivazza' alloy wheels with 215/45 R16 tyres and anti-theft wheel bolts add a real touch of style.



'High Gloss Black' decorative inserts, 'Cirrus' cloth upholstery and a three-spoke steering wheel continue the sporty theme, with central locking and front electric windows fitted as standard. Choose the Polo R-Line A/C and easy-to-use manual air conditioning comes as standard, ensuring a pleasant temperature throughout the vehicle. Interior shown is Polo R-Line Style A/C.



**The Polo R-Line.
Styled, sculpted
and as individual
as you are.**

Model shown is Polo R-Line with optional Candy White non-metallic paint.

The Polo R-Line.

Whenever you are on the road, you can cut a dashing figure on every trip with the eye-catching exterior of the Polo R-Line, distinguished by its unique styling, and an interior full of sports inspired touches to help you arrive in impressive style.

The exterior of the Polo R-Line is immediately recognisable with its 'R-Line' styling pack setting your pulse racing. Uniquely shaped body-coloured front and rear bumpers and distinctive side skirts set the tone, while an impressive rear roof spoiler and 'Gloss Black' radiator grille complete with 'R-Line' badging form its unmistakable appearance. This design is completed perfectly by the addition of rear tinted windows, front fog lights with static cornering function and distinctive 16 inch 'Mallory' alloy wheels.

Performance is not compromised at the cost of styling on the Polo R-Line. The TSI engine accelerates from standstill to 62mph in 9.7 seconds with a torque of 175 Nm at 1550-4100rpm, making the Polo R-Line a nippy hot hatch. Models shown are Polo R-Line with optional Candy White non-metallic paint.



Uniquely shaped body-coloured front and rear bumpers, distinctive side skirts, roof spoiler and distinctive 16 inch 'Mallory' alloy wheels combine to give the R-Line a strong visual presence.



The 'R-Line' badging on the 'Gloss Black' radiator grille is an unmistakable hallmark of the R-Line.



'Mallory' 7J x 16 inch alloy wheels with 215/45 R16 tyres and anti-theft wheel bolts add a particularly dynamic look, emphasising the sporty appeal of the R-Line.



The front sports seats are upholstered in Titan Black 'Kyalami' cloth with Crystal Grey 'San Remo' microfibre on the side bolsters. The 'R-Line' logo is embroidered into the head restraints giving the interior an exclusive, sporty flair and provide comfortable support on each and every trip. Interior shown is Polo R-Line with optional front centre armrest.



The front entry 'R-Line' door sill protectors are an eye-catching feature when entering the R-Line.



Inside the R-Line is just as stylish, so you might find yourself going for a drive, just because you can. The unique 'R-Line' door sill protectors and black rooflining create an instantly sporty feel from the moment you climb inside, while the front sport seats in 'Kyalami' cloth instantly make you feel at home and the 'R-Line' logo embroidered into the front head restraints adds an extra touch of class. Aluminium-look pedals and a leather trimmed steering wheel with aluminium inserts and 'R-Line' logo complete your sensory experience and confirm that you won't ever want to get out. Interior shown is Polo R-Line with optional electronic climate control air conditioning and Candy White non-metallic paint.

Fast, fun and very frugal: Meet the Polo BlueGT.



Model shown is Polo BlueGT with optional Bi-xenon headlights and metallic paint.

The Polo BlueGT.

If it's stylish looks combined with impressive performance, without compromising on fuel efficiency that you are looking for, then the Polo BlueGT may well be just the car for you. The technologically advanced 1.4 litre four cylinder TSI engine boasts a powerful 140 PS output and features ACT (Active Cylinder Technology). ACT provides the technology to shut down the second and third cylinders when the engine load is suitable, then virtually imperceptibly reactivate them when you require increased performance. This enables the ACT powered Polo BlueGT to be incredibly efficient, yet kinder to your wallet.

The Polo BlueGT boasts its own unique 'BlueSpeed' cloth seat centre sections with alcantara side bolsters to set the interior apart from the others, while black rooflining, front sports seats with height adjustment and leather trimmed three-spoke steering wheel with chrome inserts and grey stitching create a sporty atmosphere. Air conditioning maintains a comfortable cabin temperature, creating the perfect environment to enjoy comforts such as the hands-free touch phone-kit* for Bluetooth connectivity and MDI (Multi Device Interface), which enables you to play your favourite music through a compatible iPod or MP3 player.

The Polo BlueGT also has a number of features to make your life easier, like remote central locking, rear parking sensors, cruise control, electrically heated and adjustable 'Gloss Black' door mirrors and electric windows. A split folding rear seat backrest helps to make light work of transporting bulky items, while a variable boot floor enables easier loading of the luggage compartment. The multifunction computer shows journey information, and with BlueGT models also indicates when the engine is utilising ACT to run on only two of the engine's four cylinders.

Externally, the Polo BlueGT is loaded with style and character. Available in four stylish colours and with the addition of a body-coloured styling pack, it is sure to turn heads wherever you are. Uniquely shaped bumpers at the front and rear, are complemented by side skirts and a rear roof spoiler for maximum visual impact. The sports suspension, lowered by approx. 15mm gives the BlueGT a lower, wider stance and 17 inch 'Montani' alloy wheels are a perfect addition to complete the look.

The Polo BlueGT has safety in mind too, with front fog lights not only looking stylish, but also increasing visibility in poor road conditions. XDS electronic differential lock improves traction and handling while disc brakes all round provide the confidence to stop safely. The tyre pressure loss indicator will make you aware of any loss in tyre pressure, and an alarm with interior protection will help keep your Polo BlueGT safe, if you ever want to get out of it, that is.

* Phones must be Bluetooth HFP (Hands Free Profile) compatible, please contact your authorised Volkswagen retailer for specific phone compatibility.



Each Polo BlueGT is fitted with a styling pack, comprising of uniquely shaped front and rear bumpers, side skirts and radiator grille.



Unique 'BlueGT' badging at the front and rear symbolise the BlueGT's no compromise driving experience.



'Montani' 7J x 17 inch alloy wheels with 215/40 R17 tyres are a real design feature of the BlueGT, leaving a lasting impression.



The interior of the Polo BlueGT is upholstered in blue and grey 'BlueSpeed' cloth seat centre sections with contrasting blue alcantara side bolsters, giving the interior its unique character. Interior shown is Polo BlueGT with optional front centre armrest.

**The Polo GTI.
Dynamic, stylish
and exhilarating.**



Model shown is Polo GTI with optional Convenience pack, rear tinted windows and Candy White non-metallic paint.

The Polo GTI.

The Polo GTI is a real, heart thumping experience, with its sleek lines, aggressive look and phenomenal performance it really is the ultimate Polo. It commands many an envious glance with its iconic GTI honeycomb grille and red radiator grille louvres, which are instantly recognisable wherever you go. Uniquely shaped front and rear bumpers and extended black sill strips combine with the 15mm lowered sports suspension to give the GTI its sporty stance, with 17 inch 'Monza Shadow' alloy wheels and red brake calipers continuing the distinctly GTI look. At the rear the distinctive chrome exhaust twin tailpipe announce the impressive performance under the bonnet, with a body-coloured rear spoiler enhancing its dynamic silhouette. Lastly, front fog lights offer better visibility, while the GTI badging at the front and rear are the final touch, all making the Polo GTI the most stylish and dynamic Polo we've ever built.

The highlight of the Polo GTI has got to be its phenomenal performance. The 1.4 litre TSI twincharged engine produces an incredible 180 PS via direct injection and the dual charging of a turbocharger and a supercharger. Coupled with a seven speed DSG dual clutch gearbox, it allows you to change gear into the next pre-selected gear almost imperceptibly, without losing power or traction. Producing 250 Nm of torque and using XDS electronic differential lock to improve traction and handling, it really does produce a thrilling and engaging drive worthy of the iconic GTI name.

Please note, the Bluetooth touch phone-kit displays a music icon that does not have any functionality. Connection to an external multimedia source (e.g. iPod and MP3 player) is possible via the AUX-in socket or MDI (Multi Device Interface).



The front of the Polo GTI is more stylish than ever, featuring its renowned **black honeycomb grille**, traditional red louvres and gleaming chrome look 'GTI' badge. The honeycomb structure is echoed in the front air intake, while the body-coloured front spoiler completes the impressive front design.



Standard 7J x 17 inch 'Monza Shadow' alloy wheels with 215/40 R17 low profile tyres give the Polo GTI its purposeful image, the distinctive five spoke design revealing the red brake calipers behind.



The unique **leather trimmed three-spoke steering wheel**, gear knob gaiter and handbrake grip features distinctive red stitching, adding an air of exclusivity to the interior.



The **front fog lights** of the Polo GTI are neatly integrated into the lower front bumper. Not only do they improve safety in the event of poor visibility, but they also provide a sporty finish.

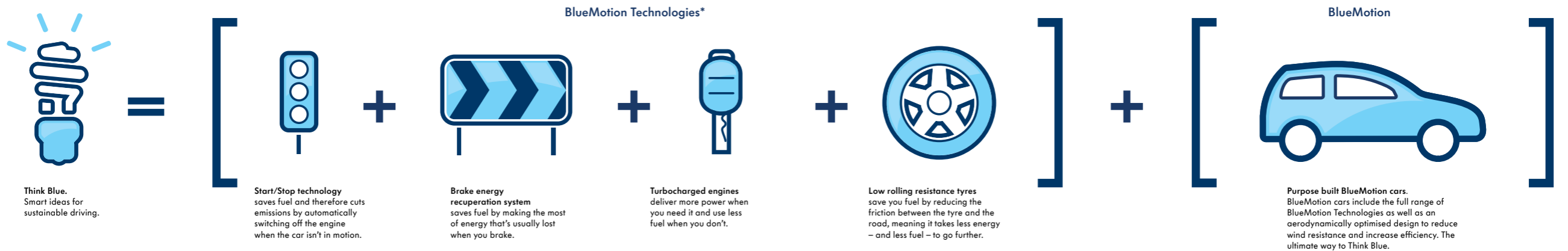


Step inside and you'll notice that the interior of the Polo GTI makes no compromises either. The height-adjustable front sports seats are upholstered in classic GTI 'Jacara' cloth with the GTI logo proudly embroidered into the backrest, while the pronounced side bolsters offer optimum lateral support. The flat bottomed sports steering wheel includes paddle shift for quick and easy gear changes, while the red stitching and a 'GTI' logo insert add an extra sporty feel. This is complemented perfectly by 'GTI' style decorative inserts in the dash and centre console, front and rear carpet mats with red stitching, door sill protectors with GTI logo, black roof lining and aluminium-look pedals. Even the gear knob gaiter has red stitching and a unique design, so as soon as you get in, you know you're in a GTI. Interior shown is Polo GTI featuring optional electronic climate control air conditioning, Convenience pack and Candy White non-metallic paint.

Think Blue.

Sustainability + Ingenuity.

'Think Blue' is Volkswagen's promise to create progressive, environmentally friendly products and processes. So from our concepts to our designs, from our fabrics to our machines, from our buildings to our water supply, from our engines to the open road we can help shape a more sustainable future. We have already started by creating BlueMotion cars and efficient BlueMotion Technologies that save you money and reduce emissions.



*BlueMotion Technologies are available on all Volkswagens, excluding Phaeton, and vary between models.



**Sometimes you just
have to stop and
admire the view.**

Model shown is Polo SEL with optional 17" 'Boavista' alloy wheels.

Safety.

The Polo not only delivers new levels of driving fun, but also, a wealth of advanced safety equipment, helping to make every journey as safe as possible. Features include a sophisticated airbag system, comprising of driver's and front passenger's airbags and side head/thorax airbag system which provide occupant protection. Add to that ABS (Anti-lock Braking System) with HBA (Hydraulic Brake Assist) and ESC (Electronic Stability Control) which recognises critical driving situations and reacts in milliseconds by braking individual wheels and reducing the engine's output to bring the vehicle under control. Also, the Polo BlueGT and GTI both feature XDS, an extension of the well-known EDL (Electronic Differential Lock) function. This is linked to the ESC (Electronic Stability Control) hydraulics and works by applying pressure to the inner front wheel during fast cornering to prevent wheel-spin. The one-sided, precise brake pressure helps to maximise traction, reduce understeer and improve responses, thus making cornering even more sporty, safe and accurate. Front safety-optimised head restraints, three rear head restraints, warning buzzer and light for front seat belts if unfastened and Isofix child seat preparation provide additional all-round safety. Such a high level of protection means you've nothing else to think about except sitting back, relaxing and enjoying the drive.



The two safety-optimised front head restraints not only ensure additional comfort, but also provide particularly effective support for the head and spine in the event of a collision.



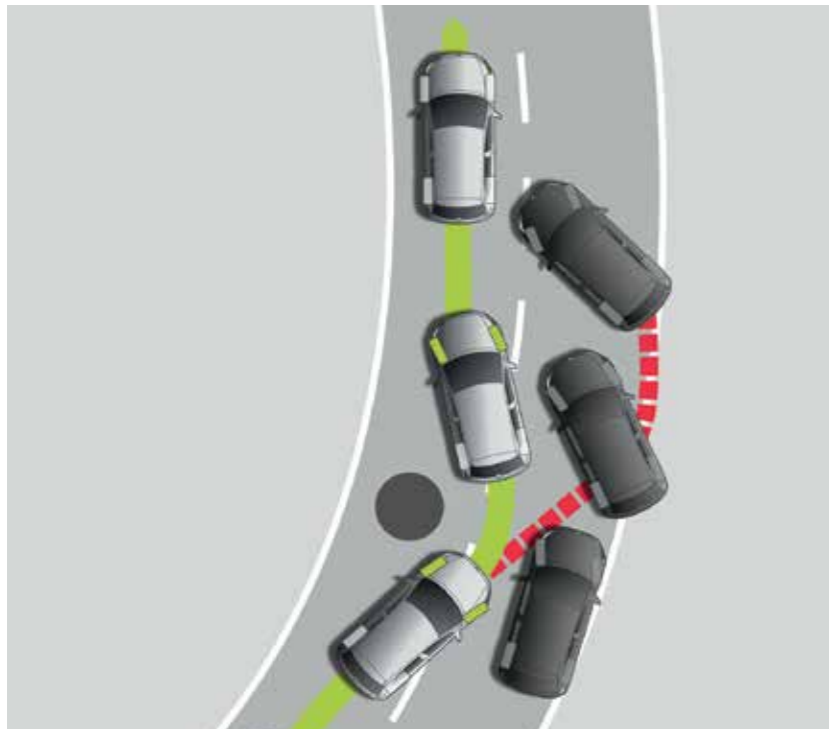
Rear parking sensors emit acoustic signals, alerting you to obstacles in your way when parking: the closer you are to an object, the faster the sound frequency. They also offer a visual display of the vehicle's proximity to obstacles on your radio display.

Standard on all models except S and R-Line Style.



In an emergency situation, all passengers can rely on the safety of the Polo, which includes driver's and front passenger's airbags as well as a side head/thorax airbag system. Deployment of the airbags is activated by crash sensors. When an impact is registered, the airbag control unit ignites the gas generator, which then inflates the airbag within less than 40 milliseconds, helping to reduce injuries significantly. Also available as an option is a curtain airbag system for front and rear seat passengers and front passenger's airbag deactivation, should you require it.

Curtain airbag system and front passenger's airbag deactivation are optional on all models. Specify the curtain airbag system, and conventional side impact airbags are fitted in the driver's and front passenger's seats, in lieu of the side head/thorax airbag system. Image shown is for illustration purposes only and may not necessarily reflect UK specification.



The ESC (Electronic Stability Control) recognises critical driving situations and reacts in milliseconds by targeting brake and engine management systems, controlling the speed of individual wheels and helping to bring the vehicle under control. As a result the vehicle achieves maximum directional stability.



The tyre pressure loss indicator will alert you to any change in tyre pressure via a warning in the dashboard, advising you to rectify the situation.



A high level third brake light integrated into the rear spoiler enhances aesthetics and improves vehicle safety.



Front fog lights add a striking look to the front of the vehicle and provide safety in bad weather or where there is poor visibility. Available in conjunction with front fog lights, is the static cornering function, which illuminates when indicating or turning at low speed, providing additional safety.

Front fog lights are standard on all models except S. Static cornering function is standard on R-Line Style and R-Line models and optional on Match Edition, SEL, BlueMotion and GTI models. Gas discharge (Bi-xenon) dipped and main beam headlights and static cornering function for front fog lights cannot be specified in conjunction with each other.

Let the adventure begin.



Model shown is Polo SEL with optional rear tinted windows and metallic paint.



Model shown is Polo SEL with optional 17" 'Boavista' alloy wheels and Convenience pack.

Optional equipment.

Once you're on the road, you'll find it's the extra details that add a new dimension to your journey. Whether you're looking for a state-of-the-art music system or perfect air conditioning for your passengers, a number of options are available, enabling you to equip your Polo to your individual needs.



The **multifunction leather trimmed steering wheel** is exceptionally user friendly and enables you to operate the radio without taking your hands off the wheel. The handbrake grip and gear knob are also leather trimmed, adding a touch of elegance and refinement to the interior, and providing particularly good grip when driving. Optional on all models except S and R-Line.

Interior shown is Match Edition with optional multifunction leather trimmed steering wheel.



Optional **alcantara sports seats** add a luxurious, sporty look to the interior. Soft and supple, yet hard-wearing and durable, its finish provides the ultimate in comfort and practicality, combining with the seat design to give exceptional lateral support, while ensuring total relaxation on long journeys. Optional on SEL and BlueGT models.

Not in conjunction with Bi-xenon headlights or Winter pack on BlueGT models. Interior shown is SEL.



Luxurious and durable **carpet mats for the front and rear** are a welcome addition to the Polo, helping to keep the interior looking its best. Optional on all models and standard on SEL and GTI models. On GTI models the carpet mats feature distinctive red stitching.



The **Convenience pack** comprises an automatic dimming interior rear-view mirror which darkens when a following car's headlights are too bright, and rain sensor, which automatically activates and controls the windscreen wipers when it detects moisture on the windscreen. Optional on all models except S.

Only available in conjunction with electronic climate control on BlueGT models.



The RCD 510 DAB touch-screen radio/dash-mounted MP3 compatible six CD autochanger features a large 6½ inch colour display, with intuitive menu navigation and touch-screen operation. It also features an AUX-in socket for connection to an external multimedia source (e.g. iPod or MP3 player) and an SD card reader. Optional on all models.

RCD 510 DAB radio system and RNS 315 navigation/DAB radio system cannot be specified in conjunction with each other.



The RNS 315 touch-screen navigation/DAB radio system features a 5 inch colour display for clear map navigation, guiding you to your destination using preloaded navigational data. The MP3 compatible single CD player will play music CDs even when the navigation system is being used, while music can also be played via the SD card reader. Optional on all models.

RCD 510 DAB radio system and RNS 315 navigation/DAB radio system cannot be specified in conjunction with each other.



The glovebox-mounted Multi Device Interface (MDI) with iPod and USB cables enables you to connect and charge a compatible device, while track selection is viewed and selected via the vehicle's radio system. Optional on all S, BlueMotion and R-Line Style, and standard on Match Edition, SEL, R-Line, BlueGT and GTI models.



The electronic climate control air conditioning system is extremely user-friendly, providing your required cabin temperature quickly and efficiently, while maintaining your selected temperature. Optional on S A/C, Match Edition, SEL, BlueMotion, R-Line, BlueGT and GTI models.

Electronic climate control must be specified in conjunction with Convenience pack on BlueMotion and BlueGT models.



Bi-xenon headlights with dynamic curve lighting and automatic range adjustment, offer the driver clearer vision of the road ahead, and with separate daytime running lights and rear number plate lights utilising LED technology, your vehicle is also visible to other road users in any weather. Headlight washers and a low washer fluid warning light help maintain clarity of vision. Optional on SEL, R-Line, BlueGT and GTI models.

Please note, standard front fog lights will be removed from BlueGT models with this option. Not in conjunction with alcantara sports seats on BlueGT models.



Headlight washers form part of the **Winter pack**, helping to improve safety in rain, snow and poor road conditions. Heated front seats provide comfort during cold weather, while heated windscreen washer jets help ensure visibility is maintained in the winter months. A low washer fluid warning light is also included. Optional on all models.

Not in conjunction with alcantara sports seats on BlueGT models.



Rear tinted windows from the B pillar back help reduce exposure to the sun's rays, to ensure a pleasant temperature for rear passengers, and also enhance the exterior's sporty appeal. Optional on SEL, R-Line Style, BlueGT and GTI and standard on Match Edition and R-Line models.



Heated front seats, which form part of the **Winter pack**, greatly increase comfort levels, especially in winter, providing heat faster than the car's heating system. Optional on all models.

Wheels.

Add a touch of style and personality with this great choice of wheels and tyres. Alloys add a distinctively sporty look to your car, carefully chosen to enhance the exterior styling of every model. These alloy wheel options give you plenty of opportunity to express your individuality and transform the appearance of your Polo. As well as the styling, they also offer sporting performance which is all about feeling the road beneath the wheels while staying in control, enabling you to maintain the perfect balance between power and dynamics in any situation.



14 inch steel wheels with 175/70 R14 tyres and **full size wheel trims** feature a robust seven spoke design, adding a sporty touch. Standard on S models.



'Castille' 6J x 15 inch alloy wheels with 185/60 R15 tyres and anti-theft wheel bolts add a contemporary finishing touch to the exterior. Standard on Match Edition models.



'Navarre' 7J x 16 inch alloy wheels with 215/45 R16 tyres and anti-theft wheel bolts complements the overall design of the Polo perfectly, adding a truly individual touch. Standard on SEL and optional on Match Edition models.



'Greenland' 5½J x 15 inch light alloy wheels with 185/60 R15 low rolling resistance tyres help to reduce the BlueMotion's fuel consumption. Standard on BlueMotion models.



'Rivazza' 7J x 16 inch alloy wheels with 215/45 R16 tyres and anti-theft wheel bolts add a twist to the classic 5 spoke alloy wheel. Standard on R-Line Style models.



'Mallory' 7J x 16 inch alloy wheels with 215/45 R16 tyres and anti-theft wheel bolts emphasise the sporty appeal of the Polo R-Line. Standard on R-Line models.



'Montani' 7J x 17 inch alloy wheels with 215/40 R17 low rolling resistance tyres and anti-theft wheel bolts hint at the sporty dynamics of the Polo BlueGT. Standard on BlueGT models.



'Monza Shadow' 7J x 17 inch alloy wheels with 215/40 R17 tyres and anti-theft wheel bolts give the GTI a sporty intent, while the red brake calipers help to create an even more stylish exterior. Standard on GTI models.



'Cadiz' 6J x 15 inch alloy wheels with 195/55 R15 tyres and anti-theft wheel bolts add a particularly dynamic look, emphasising the Polo's sporty aesthetics. Optional on S models.



'Knight' 7J x 16 inch alloy wheels with 215/45 R16 tyres and anti-theft wheel bolts create a dynamic look. Optional on Match Edition models.

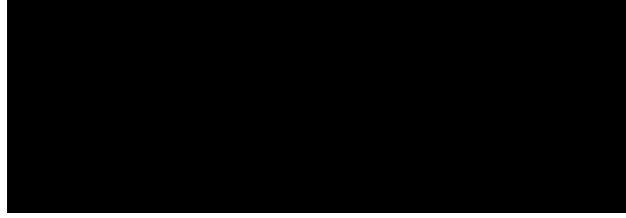


'Boavista' 7J x 17 inch alloy wheels with 215/40 R17 tyres are eye-catching and stylish, and are fitted with anti-theft wheel bolts. Optional on SEL models.



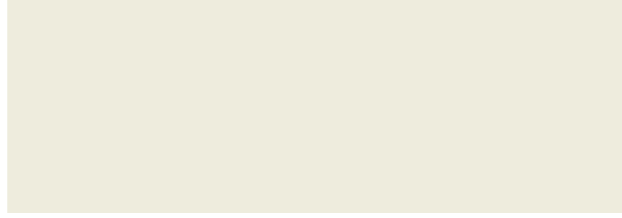
'Montani Anthracite' 7J x 17 inch alloy wheels with 215/40 R17 low rolling resistance tyres and anti-theft wheel bolts offer an alternative look to the Polo BlueGT. Available as a no cost option on BlueGT models.

Paint.



Black*
Non-Metallic · A1

P **BM** **GTI**



Candy White*
Non-Metallic · B4

P **BM** **RL** **BGT†** **GTI**



Flash Red
Non-Metallic · D8

P **BM** **RL** **GTI**



Blue Silk*
Metallic · 2B

BGT



Glacier Blue*
Metallic · 3N

BM



Java*
Metallic · 4Q

P



Reflex Silver*
Metallic · 8E

P **BM** **RL** **BGT** **GTI**



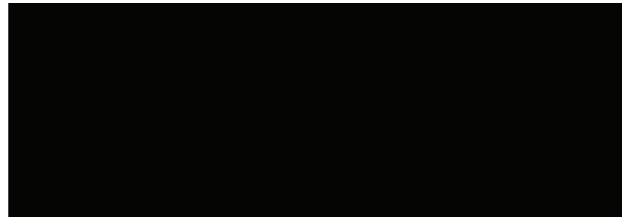
Shadow Blue*
Metallic · P6

P **BM** **RL** **GTI**



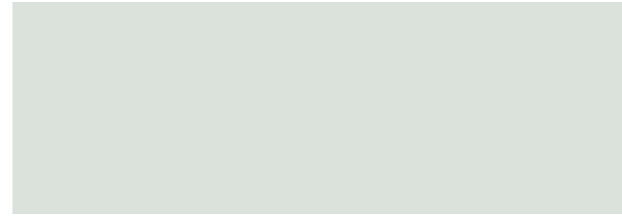
Nimbus Grey*
Metallic · U5

P **RL**



Deep Black*
Pearl Effect · 2T

P **RL** **BGT** **GTI**



Oryx White*
Premium paint · 0R

P **GTI**

P S, Match Edition, SEL **BM** BlueMotion **RL** R-Line Style, R-Line **BGT** BlueGT **GTI** GTI

* Optional at extra cost. Please note, screen technology does not allow for exact reproduction of the paint colours.

† Candy White (B4) paint is a no cost option on BlueGT models.

Upholstery.



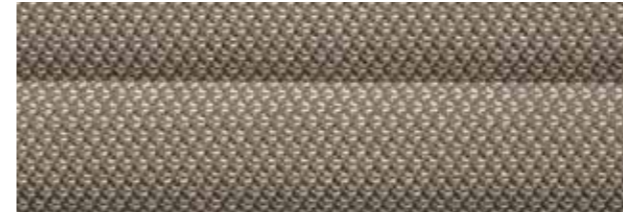
'Cirrus' cloth
Titan Black BY

Standard on S and S A/C



'Strata' cloth
Titan Black HX

Standard on Match Edition and SEL



'Strata' cloth
Seashell Beige HY

Standard on Match Edition and SEL



'Cirrus' cloth†
Titan Black BY

Standard on BlueMotion



'Blue Merlin' cloth†
Blue/Titan Black RY

Standard on BlueMotion



'Cirrus' cloth
Titan Black BY

Standard on R-Line Style and R-Line Style A/C



'Kyalami' cloth with 'San Remo' side bolsters
Titan Black/Crystal Grey IH

Standard on R-Line



'BlueSpeed' cloth with alcantara side bolsters
Titan Black/Olympia Blue/Crystal Grey RU

Standard on BlueGT



'Jacara' cloth
Black/Red XE

Standard on GTI



Alcantara sports seats with 'Microfibre' side bolsters*
Titan Black DM

Optional on SEL



Alcantara sports seats with 'Microfibre' side bolsters*
Titan Black EM

Optional on BlueGT

* Optional at extra cost.

† Please note, a choice of either 'Cirrus' or 'Blue Merlin' cloth is available on BlueMotion models.
Please note, screen technology does not allow for exact reproduction of the upholstery colours.

Combinations.

Seat upholstery	Carpet	Dashboard	Black A1*	Candy White† B4	Flash Red D8	Blue Silk Metallic* 2B	Glacier Blue Metallic* 3N	Java Metallic* 4Q	Reflex Silver Metallic* 8E	Shadow Blue Metallic* P6	Nimbus Grey Metallic* U5	Deep Black Pearl Effect* 2T	Oryx White Premium paint* 0R
'Cirrus' cloth – Standard on S and S A/C Titan Black (BY)	Black	Black/Black	●	●	●	-	-	●	●	●	●	●	●
'Strata' cloth – Standard on Match Edition and SEL Titan Black (HX) Seashell Beige (HY)	Black Black	Black/Black Black/Seashell Beige	● ●	● ●	● ●	- -	- -	● ●	● ●	● ●	● ●	● ●	● ●
'Cirrus' cloth‡ – Standard on BlueMotion Titan Black (BY)	Black	Black/Black	●	●	●	-	●	-	●	●	-	-	-
'Blue Merlin' cloth‡ – Standard on BlueMotion Blue/Titan Black (RY)	Black	Black/Black	●	●	●	-	●	-	●	●	-	-	-
'Cirrus' cloth – Standard on R-Line Style and R-Line Style A/C Titan Black (BY)	Black	Black/Black	-	●	●	-	-	-	●	●	●	●	-
'Kyalami' cloth with 'San Remo' side bolsters – Standard on R-Line Titan Black/Crystal Grey (IH)	Black	Black/Black	-	●	●	-	-	-	●	●	●	●	-
'BlueSpeed' cloth with alcantara side bolsters – Standard on BlueGT Titan Black/Olympia Blue/Crystal Grey (RU)	Black	Black/Black	-	●	-	●	-	-	●	-	-	●	-
'Jacara' cloth – Standard on GTI Black/Red (XE)	Black	Black/Black	●	●	●	-	-	-	●	●	-	●	●
Alcantara sports seats with 'Microfibre' side bolsters* – Optional on SEL Titan Black (DM)	Black	Black/Black	○	○	○	-	-	○	○	○	○	○	○
Alcantara sports seats with 'Microfibre' side bolsters* – Optional on BlueGT Titan Black (EM)	Black	Black/Black	-	○	-	○	-	-	○	-	-	○	-

* Black (A1), Candy White (B4), metallic, pearl effect and premium paints, and alcantara upholstery are optional at extra cost.
† Candy White (B4) paint is a no cost option on BlueGT models.
‡ Please note, a choice of either 'Cirrus' or 'Blue Merlin' cloth is available on BlueMotion models.
● Standard. ○ Optional at extra cost. - Not available.

Engines and gearboxes.

A selection of powerful engine variants means you can enjoy exceptional performance, impressive pulling power and smooth handling alongside frugal fuel consumption. The Polo offers a choice of petrol and diesel engines, all designed to deliver dynamic performance, impressive fuel economy and lower emissions. The range starts with three 1.2 litre petrol units which develop 60 PS, 70 PS and 105 PS. The 60 PS and 70 PS engines are both capable of achieving 51.4mpg over the Combined fuel cycle*. The 105 PS version accelerates from standstill to 62mph in just 9.7 seconds, whilst still returning 53.3mpg on the Combined fuel cycle*. A 1.4 litre unit is also available, developing 85 PS and capable of 47.9mpg over the Combined fuel cycle*. The technologically advanced 1.4 litre TSI ACT engine combines dynamic performance with excellent fuel efficiency, boasting 140 PS and featuring ACT (Active Cylinder Technology). This highly innovative petrol engine can automatically shut down the second and third cylinders under light and medium engine loads. When the driver presses the accelerator pedal, the two cylinders are imperceptibly reactivated all within 13 to 36 milliseconds, depending on the engine speed, with the driver notified of the cylinder deactivation via the multifunction computer. This technology offers the perfect balance of economy and performance – 61.4mpg on the Combined fuel cycle*, a CO₂ of just 107g/km, yet not at the expense of performance, as highlighted by a 0 - 62mph time of 7.9 seconds. ACT (Active Cylinder Technology) is only available on BlueGT models. And finally, if it's a real sports performer you're after, then look no further than the 1.4 litre 180 PS which powers the Polo GTI. Delivering excellent performance and torque, it accelerates the GTI to 62mph in just 6.9 seconds on its way to a top speed of 142mph, where the law permits, while still returning 47.9mpg on the Combined fuel cycle*. If it's a diesel you desire, two diesel engines featuring common rail technology are sure to be to your liking. The 1.2 litre 75 PS is sure to please with a CO₂ figure of 102g/km, and an impressive 72.4mpg on the Combined fuel cycle*, while the 1.6 litre unit which develops 90 PS, has a CO₂ of 112g/km with an equally impressive 65.7mpg on the Combined fuel cycle*. Finally, the same 1.2 litre 75 PS diesel engine is also available on BlueMotion models, offering CO₂ emissions of just 91g/km while achieving up to 80.7mpg on the Combined fuel cycle*, making it the most economical Polo engine available. Kinder to your pocket and the environment, what better way to enjoy your Polo?

* Please see the Engines section for CO₂ emissions and fuel consumption figures.



Featuring Volkswagen's latest **common rail** technology, the Polo's diesel engines ensure excellent overall performance, fuel consumption and CO₂ emissions. As part of Volkswagen's continued desire to satisfy European emissions legislation, the Polo's diesel engines are also fitted with a **Diesel Particulate Filter (DPF)** as standard. This is part of the exhaust system responsible for cleaning the exhaust gases before they enter the atmosphere. In addition to converting the harmful exhaust gases in the same way as a conventional catalytic converter, the DPF uses advanced technology to reduce the emission of black smoke and soot. It filters the exhaust gases and particles before they leave the vehicle exhaust system, resulting in a cleaner environment and less pollution entering the atmosphere.



The **dual-clutch Direct Shift Gearbox (DSG)** represents a milestone in the development of the latest gearbox technology. This innovative automatic gearbox from Volkswagen shifts smoothly and imperceptibly, within a hundredth of a second, into the pre-selected next gear, without disrupting the power. Such extremely short reaction times and direct response behaviour make sporty acceleration even more fun. The seven speed gearbox is not only highly dynamic, but also extremely fuel-efficient. Standard on GTI and can be specified on Match Edition and BlueGT models.



The **manual gearbox** transmits power with short, accurate shifts and very smooth handling, making it easy-to-use at the right engine speed.

Technical specification – petrol.

S, S A/C, Match Edition, R-Line Style, R-Line Style A/C – 1.2 litre 60 PS

	Manual
Engine	
Engine type	Three cylinder petrol
Cubic capacity, ltrs/cc	1.2/1198
Max. output, PS ⁽⁰¹⁾ /kW	60/44
at rpm	5200
Max. torque, lbs.ft/Nm	80/108
at rpm	3000
Gearbox	Five speed manual
Weights, kgs	
Unladen weight ⁽⁰²⁾	1067
Gross vehicle weight	1550
Payload ⁽⁰²⁾	558
Axle load limit: Front	830
Rear	770
Trailer load limits, kgs ⁽⁰³⁾	
Braked 12% incline	800
Unbraked	520
Towbar load limit	50
Max. roof load	75
Performance	
Top speed (where the law permits), mph (km/h)	98 (157)
Acceleration, secs 0 - 62 mph	16.1
ABI insurance group, 1 - 50	4E, 4E, 5E, 5E, 5E
Environmental information	
Fuel grade, minimum ⁽⁰⁵⁾	Unleaded, 95 RON
Fuel tank capacity, galls/ltrs	10.0/45
Official fuel consumption, mpg/ltr per 100 km ⁽⁰⁶⁾	
Urban	38.7/7.3
Extra-urban	62.8/4.5
Combined	51.4/5.5
Official CO ₂ emission, g/km ⁽⁰⁷⁾	128
Emission class	EURO 5
Noise, dB	73.0

Technical specification notes

- 01) The maximum power output figures are quoted in PS (or Pferdestärke, which is the metric equivalent of horsepower). To convert from metric to imperial horsepower, divide the PS figure by 1.0139.
- 02) Figures are calculated in accordance with manufacturer's criteria. The individual unladen weight depends on the specification of the vehicle, this then reduces the possible payload accordingly. The unladen weight and payload both include the fuel tank 90% full, driver (68kg) and luggage (7kg) in line with EU directive 95/48. Unladen weight shown refers to 3-door models. The unladen weight of 5-door models will increase by 25kg.
- 03) With increasing altitude the engine performance diminishes. From 1,000m above sea level and for every 1,000m thereafter 10% of the vehicle/trailer weight (trailer weight + gross vehicle weight) must be deducted.
- 04) The use of 100% RME and FAME (bio diesel) is not possible. Forecourt diesel with up to 7% bio diesel content, adhering to standard BS EN 590, can be used in diesel engines. The use of ethanol in forecourt petrol meeting BS EN 228 is allowable.
- 05) The size of the fuel tank is approximate and therefore it may be possible to add a greater amount of fuel than the size of the tank specified, due to the space in the filler neck.
- 06) Fuel consumption and CO₂ figures are obtained under standardised EU test conditions (Directive 93/116/EEC). This allows a direct comparison between different manufacturer models but may not represent the actual fuel consumption achieved in 'real world' driving conditions. More information is available on the Volkswagen web site at www.volkswagen.co.uk and at www.vca.gov.org.
- 07) The weight of a vehicle will influence the level of CO₂ emission it produces; as a result, vehicles with higher levels of specification and factory-fitted options may emit higher levels of CO₂.

Technical specification – petrol.

S, S A/C, Match Edition, R-Line Style, R-Line Style A/C – 1.2 litre 70 PS

Manual

Engine	
Engine type	Three cylinder petrol
Cubic capacity, ltrs/cc	1.2/1198
Max. output, PS ⁽⁰¹⁾ /kW	70/51
at rpm	5400
Max. torque, lbs.ft/Nm	83/112
at rpm	3000
Gearbox	Five speed manual
Weights, kgs	
Unladen weight ⁽⁰²⁾	1067
Gross vehicle weight	1550
Payload ⁽⁰²⁾	558
Axle load limit: Front	830
Rear	770
Trailer load limits, kgs ⁽⁰³⁾	
Braked 12% incline	800
Unbraked	530
Towbar load limit	50
Max. roof load	75
Performance	
Top speed (where the law permits), mph (km/h)	103 (165)
Acceleration, secs 0 - 62 mph	14.1
ABI insurance group, 1 - 50	5E, 5E, 8E, 8E, 8E
Environmental information	
Fuel grade, minimum ⁽⁰⁵⁾	Unleaded, 95 RON
Fuel tank capacity, galls/ltrs	10.0/45
Official fuel consumption, mpg/ltr per 100 km ⁽⁰⁶⁾	
Urban	38.7/7.3
Extra-urban	62.8/4.5
Combined	51.4/5.5
Official CO ₂ emission, g/km ⁽⁰⁷⁾	128
Emission class	EURO 5
Noise, dB	73.0

Technical specification notes

- 01) The maximum power output figures are quoted in PS (or Pferdestärke, which is the metric equivalent of horsepower). To convert from metric to imperial horsepower, divide the PS figure by 1.0139.
- 02) Figures are calculated in accordance with manufacturer's criteria. The individual unladen weight depends on the specification of the vehicle, this then reduces the possible payload accordingly. The unladen weight and payload both include the fuel tank 90% full, driver (68kg) and luggage (7kg) in line with EU directive 95/48. Unladen weight shown refers to 3-door models. The unladen weight of 5-door models will increase by 25kg.
- 03) With increasing altitude the engine performance diminishes. From 1,000m above sea level and for every 1,000m thereafter 10% of the vehicle/trailer weight (trailer weight + gross vehicle weight) must be deducted.
- 04) The use of 100% RME and FAME (bio diesel) is not possible. Forecourt diesel with up to 7% bio diesel content, adhering to standard BS EN 590, can be used in diesel engines. The use of ethanol in forecourt petrol meeting BS EN 228 is allowable.
- 05) The size of the fuel tank is approximate and therefore it may be possible to add a greater amount of fuel than the size of the tank specified, due to the space in the filler neck.
- 06) Fuel consumption and CO₂ figures are obtained under standardised EU test conditions (Directive 93/116/EEC). This allows a direct comparison between different manufacturer models but may not represent the actual fuel consumption achieved in 'real world' driving conditions. More information is available on the Volkswagen web site at www.volkswagen.co.uk and at www.vca.gov.org.
- 07) The weight of a vehicle will influence the level of CO₂ emission it produces; as a result, vehicles with higher levels of specification and factory-fitted options may emit higher levels of CO₂.

Technical specification – petrol.

Match Edition – 1.4 litre 85 PS

	Manual	Automatic DSG
Engine		
Engine type	Four cylinder petrol	Four cylinder petrol
Cubic capacity, ltrs/cc	1.4/1390	1.4/1390
Max. output, PS ⁽⁰¹⁾ /kW	85/63	85/63
at rpm	5000	5000
Max. torque, lbs.ft/Nm	97/132	97/132
at rpm	3800	3800
Gearbox	Five speed manual	Seven speed auto DSG
Weights, kgs		
Unladen weight ⁽⁰²⁾	1070	1104
Gross vehicle weight	1550	1580
Payload ⁽⁰²⁾	555	551
Axle load limit: Front	830	860
Rear	770	770
Trailer load limits, kgs ⁽⁰³⁾		
Braked 12% incline	1000	1000
Unbraked	530	550
Towbar load limit	50	50
Max. roof load	75	75
Performance		
Top speed (where the law permits), mph (km/h)	110 (177)	110 (177)
Acceleration, secs 0 - 62 mph	11.9	11.9
ABI insurance group, 1 - 50	11E	11E
Environmental information		
Fuel grade, minimum ⁽⁰⁵⁾	Unleaded, 95 RON	Unleaded, 95 RON
Fuel tank capacity, galls/ltrs	10.0/45	10.0/45
Official fuel consumption, mpg/ltr per 100 km ⁽⁰⁶⁾		
Urban	35.3/8.0	36.7/7.7
Extra-urban	60.1/4.7	60.1/4.7
Combined	47.9/5.9	48.7/5.8
Official CO ₂ emission, g/km ⁽⁰⁷⁾	139	134
Emission class	EURO 5	EURO 5
Noise, dB	73.0	73.0

Technical specification notes

- 01) The maximum power output figures are quoted in PS (or Pferdestärke, which is the metric equivalent of horsepower). To convert from metric to imperial horsepower, divide the PS figure by 1.0139.
- 02) Figures are calculated in accordance with manufacturer's criteria. The individual unladen weight depends on the specification of the vehicle, this then reduces the possible payload accordingly. The unladen weight and payload both include the fuel tank 90% full, driver (68kg) and luggage (7kg) in line with EU directive 95/48. Unladen weight shown refers to 3-door models. The unladen weight of 5-door models will increase by 25kg.
- 03) With increasing altitude the engine performance diminishes. From 1,000m above sea level and for every 1,000m thereafter 10% of the vehicle/trailer weight (trailer weight + gross vehicle weight) must be deducted.
- 04) The use of 100% RME and FAME (bio diesel) is not possible. Forecourt diesel with up to 7% bio diesel content, adhering to standard BS EN 590, can be used in diesel engines. The use of ethanol in forecourt petrol meeting BS EN 228 is allowable.
- 05) The size of the fuel tank is approximate and therefore it may be possible to add a greater amount of fuel than the size of the tank specified, due to the space in the filler neck.
- 06) Fuel consumption and CO₂ figures are obtained under standardised EU test conditions (Directive 93/116/EEC). This allows a direct comparison between different manufacturer models but may not represent the actual fuel consumption achieved in 'real world' driving conditions. More information is available on the Volkswagen web site at www.volkswagen.co.uk and at www.vca.gov.org.
- 07) The weight of a vehicle will influence the level of CO₂ emission it produces; as a result, vehicles with higher levels of specification and factory-fitted options may emit higher levels of CO₂.

Technical specification – petrol.

SEL, R-Line – 1.2 litre TSI 105 PS

	Manual
Engine	
Engine type	Four cylinder petrol
Cubic capacity, ltrs/cc	1.2/1197
Max. output, PS ⁽⁰¹⁾ /kW	105/77
at rpm	5000
Max. torque, lbs.ft/Nm	129/175
at rpm	1550-4100
Gearbox	Six speed manual
Weights, kgs	
Unladen weight ⁽⁰²⁾	1088
Gross vehicle weight	1570
Payload ⁽⁰²⁾	557
Axle load limit: Front	850
Rear	770
Trailer load limits, kgs ⁽⁰³⁾	
Braked 12% incline	1200
Unbraked	540
Towbar load limit	50
Max. roof load	75
Performance	
Top speed (where the law permits), mph (km/h)	118 (190)
Acceleration, secs 0 - 62 mph	9.7
ABI insurance group, 1 - 50	13E, 14E
Environmental information	
Fuel grade, minimum ⁽⁰⁵⁾	Unleaded, 95 RON
Fuel tank capacity, galls/ltrs	10.0/45
Official fuel consumption, mpg/ltr per 100 km ⁽⁰⁶⁾	
Urban	41.5/6.8
Extra-urban	62.8/4.5
Combined	53.3/5.3
Official CO ₂ emission, g/km ⁽⁰⁷⁾	124
Emission class	EURO 5
Noise, dB	71.0

Technical specification notes

- 01) The maximum power output figures are quoted in PS (or Pferdestärke, which is the metric equivalent of horsepower). To convert from metric to imperial horsepower, divide the PS figure by 1.0139.
- 02) Figures are calculated in accordance with manufacturer's criteria. The individual unladen weight depends on the specification of the vehicle, this then reduces the possible payload accordingly. The unladen weight and payload both include the fuel tank 90% full, driver (68kg) and luggage (7kg) in line with EU directive 95/48. Unladen weight shown refers to 3-door models. The unladen weight of 5-door models will increase by 25kg.
- 03) With increasing altitude the engine performance diminishes. From 1,000m above sea level and for every 1,000m thereafter 10% of the vehicle/trailer weight (trailer weight + gross vehicle weight) must be deducted.
- 04) The use of 100% RME and FAME (bio diesel) is not possible. Forecourt diesel with up to 7% bio diesel content, adhering to standard BS EN 590, can be used in diesel engines. The use of ethanol in forecourt petrol meeting BS EN 228 is allowable.
- 05) The size of the fuel tank is approximate and therefore it may be possible to add a greater amount of fuel than the size of the tank specified, due to the space in the filler neck.
- 06) Fuel consumption and CO₂ figures are obtained under standardised EU test conditions (Directive 93/116/EEC). This allows a direct comparison between different manufacturer models but may not represent the actual fuel consumption achieved in 'real world' driving conditions. More information is available on the Volkswagen web site at www.volkswagen.co.uk and at www.vca.gov.org.
- 07) The weight of a vehicle will influence the level of CO₂ emission it produces; as a result, vehicles with higher levels of specification and factory-fitted options may emit higher levels of CO₂.

Technical specification – petrol.

BlueGT – 1.4 litre TSI ACT 140 PS

	Manual	Automatic DSG
Engine		
Engine type	Four cylinder petrol	Four cylinder petrol
Cubic capacity, ltrs/cc	1.4/1395	1.4/1395
Max. output, PS ⁽⁰¹⁾ /kW	140/103	140/103
at rpm	4500-6000	4500-6000
Max. torque, lbs.ft/Nm	184/250	184/250
at rpm	1500-3500	1500-3500
Gearbox	Six speed manual	Seven speed auto DSG
Weights, kgs		
Unladen weight ⁽⁰²⁾	1212	1216
Gross vehicle weight	1630	1640
Payload ⁽⁰²⁾	493	499
Axle load limit: Front	910	920
Rear	770	770
Trailer load limits, kgs ⁽⁰³⁾		
Braked 12% incline	1200	1200
Unbraked	600	600
Towbar load limit	50	50
Max. roof load	75	75
Performance		
Top speed (where the law permits), mph (km/h)	130 (210)	130 (210)
Acceleration, secs 0 - 62 mph	7.9	7.9
ABI insurance group, 1 - 50	23E	23E
Environmental information		
Fuel grade, minimum ⁽⁰⁵⁾	Unleaded, 95 RON	Unleaded, 95 RON
Fuel tank capacity, galls/ltrs	10.0/45	10.0/45
Official fuel consumption, mpg/ltr per 100 km ⁽⁰⁶⁾		
Urban	48.7/5.8	48.7/5.8
Extra-urban	72.4/3.9	72.4/3.9
Combined	61.4/4.6	61.4/4.6
Official CO ₂ emission, g/km ⁽⁰⁷⁾	107	107
Emission class	EURO 5	EURO 5
Noise, dB	72.0	74.0

Technical specification notes

- 01) The maximum power output figures are quoted in PS (or Pferdestärke, which is the metric equivalent of horsepower). To convert from metric to imperial horsepower, divide the PS figure by 1.0139.
- 02) Figures are calculated in accordance with manufacturer's criteria. The individual unladen weight depends on the specification of the vehicle, this then reduces the possible payload accordingly. The unladen weight and payload both include the fuel tank 90% full, driver (68kg) and luggage (7kg) in line with EU directive 95/48. Unladen weight shown refers to 3-door models. The unladen weight of 5-door models will increase by 25kg.
- 03) With increasing altitude the engine performance diminishes. From 1,000m above sea level and for every 1,000m thereafter 10% of the vehicle/trailer weight (trailer weight + gross vehicle weight) must be deducted.
- 04) The use of 100% RME and FAME (bio diesel) is not possible. Forecourt diesel with up to 7% bio diesel content, adhering to standard BS EN 590, can be used in diesel engines. The use of ethanol in forecourt petrol meeting BS EN 228 is allowable.
- 05) The size of the fuel tank is approximate and therefore it may be possible to add a greater amount of fuel than the size of the tank specified, due to the space in the filler neck.
- 06) Fuel consumption and CO₂ figures are obtained under standardised EU test conditions (Directive 93/116/EEC). This allows a direct comparison between different manufacturer models but may not represent the actual fuel consumption achieved in 'real world' driving conditions. More information is available on the Volkswagen web site at www.volkswagen.co.uk and at www.vca.gov.org.
- 07) The weight of a vehicle will influence the level of CO₂ emission it produces; as a result, vehicles with higher levels of specification and factory-fitted options may emit higher levels of CO₂.

Technical specification – petrol.

GTI – 1.4 litre TSI 180 PS

	Automatic DSG
Engine	
Engine type	Four cylinder petrol
Cubic capacity, ltrs/cc	1.4/1390
Max. output, PS ⁽⁰¹⁾ /kW	180/132
at rpm	6200
Max. torque, lbs.ft/Nm	184/250
at rpm	2000-4500
Gearbox	Seven speed auto DSG
Weights, kgs	
Unladen weight ⁽⁰²⁾	1269
Gross vehicle weight	1680
Payload ⁽⁰²⁾	486
Axle load limit: Front	930
Rear	800
Trailer load limits, kgs ⁽⁰³⁾	
Braked 12% incline	1200
Unbraked	630
Towbar load limit	50
Max. roof load	75
Performance	
Top speed (where the law permits), mph (km/h)	142 (229)
Acceleration, secs 0 - 62 mph	6.9
ABI insurance group, 1 - 50	30E
Environmental information	
Fuel grade, minimum ⁽⁰⁵⁾	Unleaded, 95 RON
Fuel tank capacity, galls/ltrs	10.0/45
Official fuel consumption, mpg/ltr per 100 km ⁽⁰⁶⁾	
Urban	37.7/7.5
Extra-urban	55.4/5.1
Combined	47.9/5.9
Official CO ₂ emission, g/km ⁽⁰⁷⁾	139
Emission class	EURO 5
Noise, dB	73.0

Technical specification notes

- 01) The maximum power output figures are quoted in PS (or Pferdestärke, which is the metric equivalent of horsepower). To convert from metric to imperial horsepower, divide the PS figure by 1.0139.
- 02) Figures are calculated in accordance with manufacturer's criteria. The individual unladen weight depends on the specification of the vehicle, this then reduces the possible payload accordingly. The unladen weight and payload both include the fuel tank 90% full, driver (68kg) and luggage (7kg) in line with EU directive 95/48. Unladen weight shown refers to 3-door models. The unladen weight of 5-door models will increase by 25kg.
- 03) With increasing altitude the engine performance diminishes. From 1,000m above sea level and for every 1,000m thereafter 10% of the vehicle/trailer weight (trailer weight + gross vehicle weight) must be deducted.
- 04) The use of 100% RME and FAME (bio diesel) is not possible. Forecourt diesel with up to 7% bio diesel content, adhering to standard BS EN 590, can be used in diesel engines. The use of ethanol in forecourt petrol meeting BS EN 228 is allowable.
- 05) The size of the fuel tank is approximate and therefore it may be possible to add a greater amount of fuel than the size of the tank specified, due to the space in the filler neck.
- 06) Fuel consumption and CO₂ figures are obtained under standardised EU test conditions (Directive 93/116/EEC). This allows a direct comparison between different manufacturer models but may not represent the actual fuel consumption achieved in 'real world' driving conditions. More information is available on the Volkswagen web site at www.volkswagen.co.uk and at www.vca.gov.org.
- 07) The weight of a vehicle will influence the level of CO₂ emission it produces; as a result, vehicles with higher levels of specification and factory-fitted options may emit higher levels of CO₂.

Technical specification – diesel.

Match Edition – 1.2 litre TDI 75 PS

	Manual
Engine	
Engine type	Three cylinder diesel
Cubic capacity, ltrs/cc	1.2/1199
Max. output, PS ⁽⁰¹⁾ /kW	75/55
at rpm	4200
Max. torque, lbs.ft/Nm	133/180
at rpm	2000
Gearbox	Five speed manual
Weights, kgs	
Unladen weight ⁽⁰²⁾	1132
Gross vehicle weight	1620
Payload ⁽⁰²⁾	563
Axle load limit: Front	900
Rear	770
Trailer load limits, kgs ⁽⁰³⁾	
Braked 12% incline	1000
Unbraked	560
Towbar load limit	50
Max. roof load	75
Performance	
Top speed (where the law permits), mph (km/h)	105 (170)
Acceleration, secs 0 - 62 mph	13.9
ABI insurance group, 1 - 50	9E
Environmental information	
Fuel grade, minimum ⁽⁰⁴⁾	Diesel ⁽⁰⁴⁾
Fuel tank capacity, galls/ltrs	10.0/45
Official fuel consumption, mpg/ltr per 100 km ⁽⁰⁶⁾	
Urban	58.9/4.8
Extra-urban	83.1/3.4
Combined	72.4/3.9
Official CO ₂ emission, g/km ⁽⁰⁷⁾	102
Emission class	EURO 5
Noise, dB	69.0

Technical specification notes

- 01) The maximum power output figures are quoted in PS (or Pferdestärke, which is the metric equivalent of horsepower). To convert from metric to imperial horsepower, divide the PS figure by 1.0139.
- 02) Figures are calculated in accordance with manufacturer's criteria. The individual unladen weight depends on the specification of the vehicle, this then reduces the possible payload accordingly. The unladen weight and payload both include the fuel tank 90% full, driver (68kg) and luggage (7kg) in line with EU directive 95/48. Unladen weight shown refers to 3-door models. The unladen weight of 5-door models will increase by 25kg.
- 03) With increasing altitude the engine performance diminishes. From 1,000m above sea level and for every 1,000m thereafter 10% of the vehicle/trailer weight (trailer weight + gross vehicle weight) must be deducted.
- 04) The use of 100% RME and FAME (bio diesel) is not possible. Forecourt diesel with up to 7% bio diesel content, adhering to standard BS EN 590, can be used in diesel engines. The use of ethanol in forecourt petrol meeting BS EN 228 is allowable.
- 05) The size of the fuel tank is approximate and therefore it may be possible to add a greater amount of fuel than the size of the tank specified, due to the space in the filler neck.
- 06) Fuel consumption and CO₂ figures are obtained under standardised EU test conditions (Directive 93/116/EEC). This allows a direct comparison between different manufacturer models but may not represent the actual fuel consumption achieved in 'real world' driving conditions. More information is available on the Volkswagen web site at www.volkswagen.co.uk and at www.vca.gov.org.
- 07) The weight of a vehicle will influence the level of CO₂ emission it produces; as a result, vehicles with higher levels of specification and factory-fitted options may emit higher levels of CO₂.

Technical specification – diesel.

BlueMotion – 1.2 litre TDI 75 PS

	Manual
Engine	
Engine type	Three cylinder diesel
Cubic capacity, ltrs/cc	1.2/1199
Max. output, PS ⁽⁰¹⁾ /kW	75/55
at rpm	4200
Max. torque, lbs.ft/Nm	133/180
at rpm	2000
Gearbox	Five speed manual
Weights, kgs	
Unladen weight ⁽⁰²⁾	1150
Gross vehicle weight	1590
Payload ⁽⁰²⁾	515
Axle load limit: Front	900
Rear	740
Trailer load limits, kgs ⁽⁰³⁾	
Braked 12% incline	800
Unbraked	570
Towbar load limit	50
Max. roof load	75
Performance	
Top speed (where the law permits), mph (km/h)	107 (173)
Acceleration, secs 0 - 62 mph	13.9
ABI insurance group, 1 - 50	9E
Environmental information	
Fuel grade, minimum ⁽⁰⁴⁾	Diesel ⁽⁰⁴⁾
Fuel tank capacity, galls/ltrs	10.0/45
Official fuel consumption, mpg/ltr per 100 km ⁽⁰⁶⁾	
Urban	67.3/4.2
Extra-urban	91.1/3.1
Combined	80.7/3.5
Official CO ₂ emission, g/km ⁽⁰⁷⁾	91
Emission class	EURO 5
Noise, dB	69.0

Technical specification notes

- 01) The maximum power output figures are quoted in PS (or Pferdestärke, which is the metric equivalent of horsepower). To convert from metric to imperial horsepower, divide the PS figure by 1.0139.
- 02) Figures are calculated in accordance with manufacturer's criteria. The individual unladen weight depends on the specification of the vehicle, this then reduces the possible payload accordingly. The unladen weight and payload both include the fuel tank 90% full, driver (68kg) and luggage (7kg) in line with EU directive 95/48. Unladen weight shown refers to 3-door models. The unladen weight of 5-door models will increase by 25kg.
- 03) With increasing altitude the engine performance diminishes. From 1,000m above sea level and for every 1,000m thereafter 10% of the vehicle/trailer weight (trailer weight + gross vehicle weight) must be deducted.
- 04) The use of 100% RME and FAME (bio diesel) is not possible. Forecourt diesel with up to 7% bio diesel content, adhering to standard BS EN 590, can be used in diesel engines. The use of ethanol in forecourt petrol meeting BS EN 228 is allowable.
- 05) The size of the fuel tank is approximate and therefore it may be possible to add a greater amount of fuel than the size of the tank specified, due to the space in the filler neck.
- 06) Fuel consumption and CO₂ figures are obtained under standardised EU test conditions (Directive 93/116/EEC). This allows a direct comparison between different manufacturer models but may not represent the actual fuel consumption achieved in 'real world' driving conditions. More information is available on the Volkswagen web site at www.volkswagen.co.uk and at www.vca.gov.org.
- 07) The weight of a vehicle will influence the level of CO₂ emission it produces; as a result, vehicles with higher levels of specification and factory-fitted options may emit higher levels of CO₂.

Technical specification – diesel.

SEL – 1.6 litre TDI 90 PS

	Manual
Engine	
Engine type	Four cylinder diesel
Cubic capacity, ltrs/cc	1.6/1598
Max. output, PS ⁽⁰¹⁾ /kW	90/66
at rpm	4200
Max. torque, lbs.ft/Nm	170/230
at rpm	1500-2500
Gearbox	Five speed manual
Weights, kgs	
Unladen weight ⁽⁰²⁾	1157
Gross vehicle weight	1650
Payload ⁽⁰²⁾	568
Axle load limit: Front	930
Rear	770
Trailer load limits, kgs ⁽⁰³⁾	
Braked 12% incline	1200
Unbraked	570
Towbar load limit	50
Max. roof load	75
Performance	
Top speed (where the law permits), mph (km/h)	112 (180)
Acceleration, secs 0 - 62 mph	11.5
ABI insurance group, 1 - 50	13E
Environmental information	
Fuel grade, minimum ⁽⁰⁵⁾	Diesel ⁽⁰⁴⁾
Fuel tank capacity, galls/ltrs	10.0/45
Official fuel consumption, mpg/ltr per 100 km ⁽⁰⁶⁾	
Urban	52.3/5.4
Extra-urban	78.5/3.6
Combined	65.7/4.3
Official CO ₂ emission, g/km ⁽⁰⁷⁾	112
Emission class	EURO 5
Noise, dB	70.0

Technical specification notes

- 01) The maximum power output figures are quoted in PS (or Pferdestärke, which is the metric equivalent of horsepower). To convert from metric to imperial horsepower, divide the PS figure by 1.0139.
- 02) Figures are calculated in accordance with manufacturer's criteria. The individual unladen weight depends on the specification of the vehicle, this then reduces the possible payload accordingly. The unladen weight and payload both include the fuel tank 90% full, driver (68kg) and luggage (7kg) in line with EU directive 95/48. Unladen weight shown refers to 3-door models. The unladen weight of 5-door models will increase by 25kg.
- 03) With increasing altitude the engine performance diminishes. From 1,000m above sea level and for every 1,000m thereafter 10% of the vehicle/trailer weight (trailer weight + gross vehicle weight) must be deducted.
- 04) The use of 100% RME and FAME (bio diesel) is not possible. Forecourt diesel with up to 7% bio diesel content, adhering to standard BS EN 590, can be used in diesel engines. The use of ethanol in forecourt petrol meeting BS EN 228 is allowable.
- 05) The size of the fuel tank is approximate and therefore it may be possible to add a greater amount of fuel than the size of the tank specified, due to the space in the filler neck.
- 06) Fuel consumption and CO₂ figures are obtained under standardised EU test conditions (Directive 93/116/EEC). This allows a direct comparison between different manufacturer models but may not represent the actual fuel consumption achieved in 'real world' driving conditions. More information is available on the Volkswagen web site at www.volkswagen.co.uk and at www.vca.gov.org.
- 07) The weight of a vehicle will influence the level of CO₂ emission it produces; as a result, vehicles with higher levels of specification and factory-fitted options may emit higher levels of CO₂.

Technology.

Engines

- Front transverse-installed engine
- 1.2 litre/60 PS ⁽⁰¹⁾ (44 kW) petrol engine: EU5 emissions standard three cylinder in-line MPI (Multi Point Injection) engine, with four valves per cylinder. Available with five speed manual transmission
- 1.2 litre/70 PS ⁽⁰¹⁾ (51 kW) petrol engine: EU5 emissions standard three cylinder in-line MPI (Multi Point Injection) engine, with four valves per cylinder. Available with five speed manual transmission
- 1.4 litre/85 PS ⁽⁰¹⁾ (63 kW) petrol engine: EU5 emissions standard four cylinder in-line MPI (Multi Point Injection) engine, with four valves per cylinder. Available with five speed manual and a seven speed automatic DSG transmission
- 1.2 litre/105 PS ⁽⁰¹⁾ (77 kW) petrol engine: EU5 emissions standard four cylinder in-line direct injection engine. Fitted with two valves per cylinder and a turbocharger. Available with six speed manual transmission
- 1.4 litre/140 PS ⁽⁰¹⁾ (103 kW) petrol engine: EU5 emissions standard four cylinder in-line MPI (Multi Point Injection) engine, with four valves per cylinder. Includes ACT (Active Cylinder Technology) which shuts off 2 cylinders under certain driving conditions to reduce fuel consumption and emissions. Available with six speed manual and a seven speed automatic DSG transmission
- 1.4 litre/180 PS ⁽⁰¹⁾ (132 kW) petrol engine: EU5 emissions standard four cylinder in-line direct injection engine. Fitted with four valves per cylinder, a supercharger and a turbocharger. Available with seven speed automatic DSG transmission
- 1.2 litre/75 PS ⁽⁰¹⁾ (55 kW) common rail diesel engine: EU5 emissions standard, three cylinder in-line turbocharged common rail diesel engine, four valves per cylinder. Fitted with a turbocharger and a DPF (diesel particulate filter). Available with a five speed manual transmission
- 1.6 litre/90 PS ⁽⁰¹⁾ (66 kW) common rail diesel engine: EU5 emissions standard, four cylinder in-line turbocharged engine, with four valves per cylinder. Fitted with a turbocharger and a DPF (diesel particulate filter). Available with a five speed manual transmission

Exterior dimensions

S, Match Edition, SEL, BlueMotion, R-Line Style, R-Line, BlueGT	GTI	
Length, mm	3970 [4007]	3976
Width – including door mirrors, mm	1901	1901
Width – excluding door mirrors, mm	1682	1682
Width – opened front doors – 3-door, mm	3933	3933
Width – opened front doors – 5-door, mm	3456	3456
Width – opened rear doors – 5-door, mm	3207	3207
Height, mm	1462 1465	1452
Height – opened bonnet/floor, mm	1753 1756	1744
Height – opened tailgate/floor, mm	2000 2003	1990
Wheelbase, mm	2470 2468	2468
Turning circle, m	10.6	10.6

Interior dimensions

Effective headroom – front, mm	974	974
Effective headroom – rear, mm	943	943

[] R-Line Style and R-Line figures. BlueMotion figures. GTI figures.

Max. luggage capacity, ltrs. VDA measuring method using 200 x 100 x 50mm blocks

With rear seats upright	280	204
With rear seats folded	952	882

Transmission

- Front wheel drive through asbestos-free single-plate dry clutch. Hydraulic clutch-mechanism. Five or six speed manual transmissions with double joint half axles. Seven speed automatic DSG gearbox with a dry multi-plate clutch and double joint half axles

Running gear

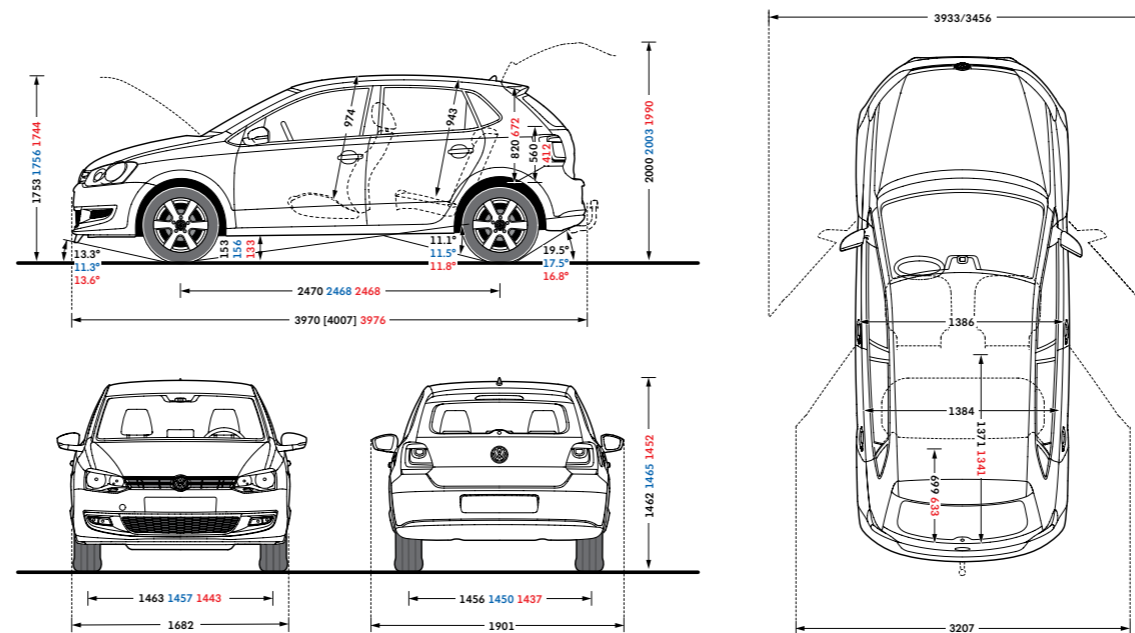
- Electronic Stability Control (ESC) including Electronic Differential Lock (EDL), Traction Control (ASR) and Countersteer Support
- Front suspension through coil springs with telescopic shock absorbers, all elements integrated in chassis legs
- Rear suspension with gas pressure shock absorbers and separate springs
- Wheel control: front through chassis legs and (lower) triangular wishbones (directionally stabilising steering roll radius)
- Wheel control: rear through four-link suspension with independent wheel suspension
- Front and rear anti-roll bar
- XDS electronic differential lock (BlueGT and GTI only)

Steering

- Electro-mechanical steering rack
- Collapsible, height and lengthways adjustable safety steering column

Brakes

- Electronically controlled Anti-lock Braking System (ABS) with Electronic Brake-pressure Distribution (EBD)
- Diagonal twin-circuit brake system with front and rear disc brakes (front ventilated)
- Rear drum brakes (1.2 litre 60 PS, 1.2 litre 70 PS and 1.2 litre TDI 75 PS)
- Asbestos-free brake pads
- Hydraulic Brake Assist (HBA)



On illustrations, where arrows and figures are shown inside of the vehicle, the measurements are for interior dimensions. Where arrows and figures are shown outside of the vehicle, the measurements are for exterior dimensions.

Volkswagen service.

The Volkswagen Warranty Three-year Warranty

All Volkswagen passenger cars come with a three-year/60,000 miles warranty, which protects your car against the failure of most technical and electrical components due to manufacturing defects. This comprises a two-year manufacturer's warranty with unlimited mileage plus a further one-year/60,000 miles (whichever is soonest) Retailer Warranty*. Should the mileage exceed 60,000 miles within the first two years, the manufacturer's two-year warranty will still be valid. Full details of the three-year warranty are available from your authorised Volkswagen retailer or repairer.

* All warranty work must be completed by an authorised Volkswagen retailer or repairer.

Three-year Paint Warranty

The paintwork of the Polo is covered against manufacturing defects for a period of three years. Naturally, the Polo must be cared for in compliance with the operating instructions which will be found in your vehicle handbook. Please consult your authorised Volkswagen retailer or repairer for full warranty details.

12-year Body Protection Warranty

The internal body sections and panels of the Polo are covered against rusting through from the inside for 12 years. Naturally, the Polo must be cared for in compliance with the operating instructions. Please consult your authorised Volkswagen retailer or repairer for full warranty details.

Approved Accessories

A comprehensive range of accessories from alloy wheels to carpet mats is available to complement the factory-fitted option list. Volkswagen approved accessories purchased from and fitted by your authorised Volkswagen retailer at the point of vehicle sale will also benefit from the three-year vehicle warranty.

Extended Warranty

If you order the Volkswagen Extended Warranty as an option when buying your new Polo then you get the 100% Volkswagen Warranty and you can continue to enjoy comprehensive Volkswagen protection against many unforeseeable repair costs. Designed to your needs, you can purchase an extra one or two year's warranty up to a maximum of five years or 90,000 miles.

Volkswagen Roadside Assistance

Every new car is registered for Volkswagen Roadside Assistance for one year. This provides vehicle home and roadside recovery in the unlikely event of a breakdown in the UK and Europe (subject to conditions). Volkswagen Roadside Assistance can also be purchased for subsequent years. For full details, please contact your authorised Volkswagen retailer or repairer.

Tax Free Sales

For full details, please contact your authorised Volkswagen retailer.

Service Intervals

Volkswagen are pleased to offer you a choice on how your Polo is serviced. The appropriate selection is entirely dependent on how the car is likely to be driven and its general use. To help you identify which type of service would be most suitable, please refer to the following guide.

The Fixed Service is recommended for vehicles that will cover less than 10,000 miles in 12 months

and if the vehicle is likely to be used in the following way:

- Predominantly urban driving, short journeys with frequent cold starts
- Activities regularly producing high engine loading, e.g. frequent hill climbs, driving with vehicle fully loaded and towing
- Uneconomical driving style using high rpms with heavy acceleration and heavy braking

The service intervals for the Fixed Service are as follows:

- Oil change service Every 10,000 miles/1 year (whichever is soonest)
- Interval service Every 20,000 miles/2 years (whichever is soonest)
- Inspection service Every 40,000 miles/3 years (whichever is soonest)

The Flexible Service is recommended for vehicles with a daily mileage of more than 25 miles where the vehicle is driven regularly mainly on longer distance journeys. The vehicle is driven mainly at a constant speed with minimum vehicle and engine loading, minimal towing and driven in an economical manner.

With the Flexible Service the vehicle can cover anywhere between 10,000[†] and a maximum of 18,000[†] miles or 24 months (whichever is soonest) between oil changes. Inspection service is typically in the third year of ownership and thereafter every second year, for vehicles with an approximate annual mileage of 10,000 miles.

[†] Please note that mileages are approximate as the service indicator system uses kilometres as the distance measurement. Please consult your authorised Volkswagen retailer or repairer for advice and full details.

Volkswagen Insurance[‡]

We want you to start enjoying your new car from day one and thanks to Volkswagen Insurance complimentary seven day cover, you can. Call free on 0800 316 7892 (lines are open Monday to Friday 8am – 9pm and Saturday 9am – 5pm), provide a few details and a cover note will be sent to your retailer. They will then tax your car and you can drive it away.

‡ Insurance is a trading name of Volkswagen Insurance Service (Great Britain) Limited, an appointed representative of Volkswagen Financial Services (UK) Limited, Brunswick Court, Yeomans Drive, Blakelands, Milton Keynes MK14 5LR. Registered in England number 2835230. Volkswagen Insurance is sold, underwritten and administered by Allianz Insurance plc registered in England number 84638. Registered office 57 Ladymead, Guildford, Surrey GU1 1DB. Volkswagen Financial Services (UK) Limited and Allianz Insurance plc are authorised and regulated by the Financial Services Authority. Volkswagen Financial Services (UK) Limited and Allianz Insurance plc are not part of the same corporate group.

Volkswagen Insurance

Get three years' Volkswagen Insurance cover for free.

Another great benefit of being a Volkswagen driver. If your Volkswagen was damaged in an accident, wouldn't you want it fixed by a Volkswagen trained technician using only genuine Volkswagen parts? Insurance is Volkswagen's accident and repair cover which does exactly that. It works alongside your main comprehensive motor insurance policy no matter who you are insured with, to make sure you get the quality repair and service you would want. If you're involved in an accident or your car is stolen, just one call to us and we'll look after your claim from start to finish ensuring your Volkswagen is restored to the highest standard.

Activate your cover and benefit from:

- A guarantee that your Volkswagen will be repaired in a Volkswagen Insurance approved repairer, by Volkswagen trained technicians, using only genuine Volkswagen parts and paints.
- A dedicated Claims Manager available 24-hours a day to manage your claim, liaising with your insurer and the repairer, so you don't have to.
- Help to recover any uninsured losses using our Legal Expenses Cover.
- Online claims tracking so you can keep up to date with the status of any claim.

Volkswagen Insurance is free to all Volkswagen customers for three years and it only takes a minute to get cover.

To find out more and to activate your cover, visit volkswagen-ensurance.co.uk

Volkswagen Finance[±]

Volkswagen Finance specialises in providing funding solutions for Volkswagen drivers. Whether your Volkswagen is for private or business use, you can choose from a range of funding options.

- Solutions – a personal contract plan
- Hire purchase
- Lease purchase
- Finance lease
- Contract hire

With all Volkswagen Finance products you can choose a fixed-cost maintenance plan to help you budget for your servicing and maintenance costs.

No matter what finance product you choose, your local Volkswagen retailer will be able to provide you with a personalised quote that could meet your budget and vehicle needs.

± Volkswagen Finance is a trading name of Volkswagen Financial Services (UK) Limited. An offer of finance depends on certain conditions. Available to people over 18 in the UK only.

CO₂ Emissions

Increased weight of a vehicle, including higher trim levels and the addition of options will have a detrimental influence on the level of fuel consumption and CO₂ emissions produced.

The CO₂ and fuel consumption figures are obtained from tests on a representative vehicle of the type, conducted and approved in accordance with Council Directive 80/1268/EEC as amended by Directive 1999/100/EC (or later) on the approximation of the laws of the member states relating to the carbon dioxide emissions and the fuel consumption of motor vehicles.

Please Note

Some illustrations in this brochure do not necessarily reflect UK specifications and may not be available. In particular, controls and some items of equipment are positioned differently for the UK.

The specifications contained in this brochure are for information purposes only and are subject to change. If you require any specific feature, you must consult your authorised Volkswagen retailer who is regularly updated with any change in specification. Please check model availability and full specification details with your authorised Volkswagen retailer prior to ordering.

Note: we would like to advise you that telephone calls to Volkswagen Customer Care may be monitored and recorded as part of our training and quality assurance processes. All our monitoring and recording processes meet Ofcom regulations.



facebook.com/VolkswagenUK



[@UKVolkswagen](https://twitter.com/UKVolkswagen)



youtube.com/UKVolkswagen