

The Actros SLT. The Arocs SLT.

Heavy Haulage. Up to 250 tonnes.



Mercedes-Benz
Trucks you can trust





The Actros SLT. The Arocs SLT.

The new force in heavy haulage.

The Actros SLT and Arocs SLT models are a range of tractive units, designed and built for operation up to 250 tonnes.

From first sight and for a very long time to come, the new cabs offer the living and working comfort required in heavy haulage. The powerful, reliable Euro VI engines, Mercedes PowerShift 3 automated transmission and Turbo Retarder Clutch provide a drive system that is extremely resilient and give the exceptionally fine

control of the power you need. For outstanding strength, the chassis is especially robust, and a wide choice of suspension and axles transfer the power to the road with total precision, under all conditions. The huge and varied range of equipment and models ensures the flexibility to perfectly configure a vehicle for any application.

Climb aboard and experience the new force in heavy haulage.

The new force in comfort.

Whichever one of the cabs you choose, the Actros SLT and Arocs SLT offer everything you could wish for as a heavy haulage driver – space, equipment, and living and working comfort.

In short: a workplace that will be envied.

The newly designed cabs for the Actros and Arocs meet this standard in every respect. This is especially true of the GigaSpace¹⁾ and BigSpace cabs, offering a completely flat floor and impressive headroom²⁾ of 2.13 m and 1.99 m respectively. What's more, a huge variety of storage space is on offer – lockers above the windscreen, lockers and drawers under the bed, drawers under the dashboard – all designed to fit the items needed every day in heavy haulage.

Better ergonomic performance with practical design comes from the new cockpit, the new wider seats and the new multifunction steering wheel.



Multifunction key. The optionally-available multifunction key provides all the functions of extended central locking and makes it possible to carry out many checks remotely. It also serves as a remote control for radio and heating systems.

Everything is in easy reach to be operated intuitively and is precisely tuned to the driver's needs. Over and above the design of the cab being in tune with the needs of the driver, standard equipment includes Bluetooth® and USB connectivity, power sockets and air conditioning. Adding a personal touch to the cab is made easy, with choices including heated or air-conditioned seats, real leather or man-made suede trim and even a massage function in the seats. Climate control and even a heating system that uses residual heat from the engine when parked are available, as is electrical pre-wiring to suit your choice of power consumers.



BigSpace cockpit. With a width of 2500 mm and a completely flat floor, the BigSpace cabin (shown here in Arocs trim) provides an impressive working atmosphere with living, working, and storage space in abundance.

To aid relaxation, the beds are wider and longer than before, and are available with a choice of thick one-piece mattresses to suit your preference. The lockers over the windscreen can be specified as lockable with reinforcement to provide peace of mind when away from the cab. A fold out table, climate control and a large capacity fridge are also available, as is the new multifunction key – providing remote control of many functions and making daily checks even easier.



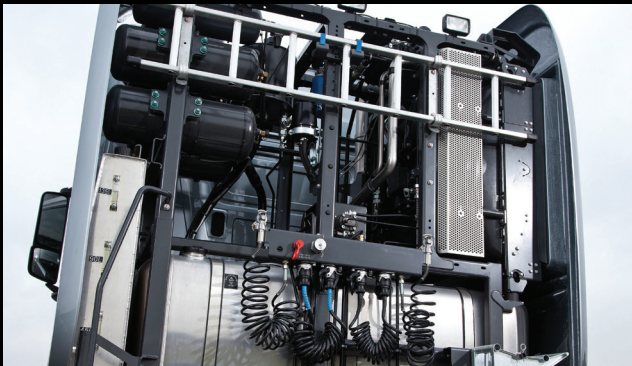
BigSpace living. Fitted as standard with a 2200 mm long, 750 mm wide bed, with the option of a memory foam mattress. Add two sliding drawers with the option of a large fridge, plus huge amounts of underbunk locker space which is also accessible from outside, and life on the road just got easier.

¹⁾ Only available for the Actros SLT

²⁾ Headroom between the seats

The new force in flexibility.

Special transport calls for special vehicles. That's why the Actros SLT and Arocs SLT not only have a particularly robust and strong load-bearing standard specification, but can also be tailored to your application precisely. Some of the options available are highlighted below.



- Front 250 t height adjustable drawbar coupling with air couplings
- Rear 250 t height adjustable drawbar coupling with air and electrical couplings
- Heavy duty 3.5" fifth wheel couplings, standard or cardanic versions with various coupling heights
- Heavy duty fixed or adjustable fifth wheel mounting
- Stinger plate for knock-out neck trailers
- Removable ballast platform
- Plastic or aluminium mudwings
- Heavy duty steps and catwalk, with chassis infill plate
- Rotating beacons or pre-wiring for beacon bars
- Additional work lights, front or rear
- Trailer hydraulic power pack with front or rear of chassis or behind cab connection points
- Rear mounted additional cooling system



The new force in vehicle performance.

With the Actros SLT or Arocs SLT you have a vehicle for heavy haulage that is impressive on every count. It delivers the reliable, outstanding performance you need for your job. Day after day.

From the engines and the cooling system through to the Turbo Retarder Clutch and the Mercedes PowerShift 3 16-speed automated transmission system – all of the components for the Actros SLT and Arocs SLT have been developed to give the ultimate in vehicle performance – characterised by their particularly sturdy, durable construction and excellent reliability.

Euro VI engines are a good place to start. With outputs of up to 460 kW (625 hp) and impressive maximum torque of 3000 Nm, along with an optional second cooling system to allow for 250 t operation, these 6-cylinder in-line engines provide a sound, fuel-efficient base for meeting all the requirements of a heavy haulage truck.

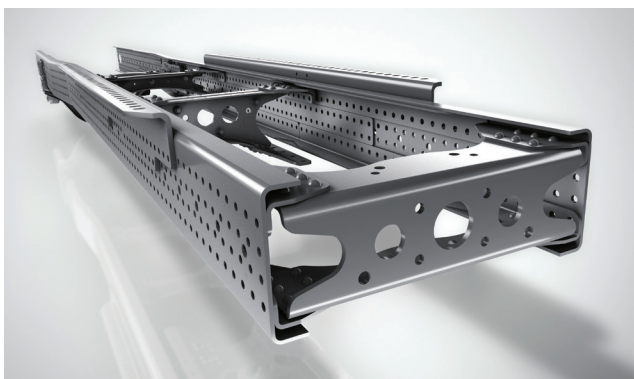
The Actros SLT and Arocs SLT are fitted as standard with Mercedes PowerShift 3 automated transmissions to get this power to the road in every situation. In conjunction with the “heavy” drive program, specially configured for this application, and the finely stepped 16-speed constant mesh transmission, the short shift times and a precise gear selection are truly impressive in any situation.

A further, and important, benefit of the Actros SLT and Arocs SLT is the wear-free Turbo Retarder Clutch. This ensures maximum performance when moving off or manoeuvring at high gross combination weights and with high torque. It serves at the same time as a primary retarder, thereby providing extra safety.

To get the power to the road, a wide choice of steel and air sprung axles are available, all with a proven pedigree, and configurable with different load capacities, drive configurations, braking systems, and drive ratios to match your application to perfection.

All of these are mounted to the high strength reinforced frame with no joints or welds, ensuring a long life and great strength, and also providing the ideal mount for the heavy duty coupling points.

In short: the precisely matched combination of engine, transmission, automated gearshift, and Turbo Retarder Clutch ensures that the power can be deployed reliably with precision in any driving situation, and the robust axles, suspension, and frame make sure it gets there for many years to come.



The Actros SLT and Arocs SLT – Model overview.

The table below outlines the range of 250 t tractor units. Other models, engines, weight variants and options are available. Please contact your local Mercedes-Benz Commercial Vehicle Dealer for details.

		Actros	Actros	Arocs	Arocs	Arocs	Arocs	Arocs
Model designation		33.. LS	41.. LS	33.. S	41.. S	33.. AS	41.. AS	41.. AK
Drive configuration		6x4	8x4/4	6x4	8x4/4	6x6	8x6/4	8x8/4
Engine designation		OM 473	OM 473	OM 473	OM 473	OM 473	OM 473	OM 473
Euro VI		x	x	x	x	x	x	x
Engine availability	380 kW (517 hp) – ..52	x	x	x	x	x	x	x
	425 kW (578 hp) – ..58	x	x	x	x	x	x	x
	460 kW (625 hp) – ..63	x	x	x	x	x	x	x
L-cab	StreamSpace 2300 mm wide with 320 mm engine tunnel	–	–	–	–	x	x	x
	BigSpace 2500 mm wide with flat floor	x	x	x	x	–	–	–
	GigaSpace 2500 mm wide with flat floor	x	x	–	–	–	–	–
Wheelbase in mm	3400	x	–	–	–	–	–	–
	3600	–	–	x	–	–	–	–
	3900	–	–	x	x	–	–	–
	4000	x	x	–	–	–	–	–
	4200	–	–	–	–	x	x	–
	4850	–	–	–	–	–	–	x
Permissible axle load (t)	Steel suspended front axles	8.0 / 9.0	8.0 / 9.0	8.0 / 9.0	8.0 / 9.0	8.0 / 9.0	8.0 / 9.0	2x8.0 / 2x9.0
	Air suspended leading axle	–	8.0	–	8.0	–	8.0	–
	Air suspended rear axles	2x13.0	2x13.0	–	–	–	–	–
	Steel suspended rear axles	–	–	2x13.0 / 2x16.0	2x13.0 / 2x16.0	2x13.0 / 2x16.0	2x13.0 / 2x16.0	2x13.0 / 2x16.0
Permissible weights (t)	Gross vehicle weight (standard)	33	41	33	41	33	41	41
	Gross combination weight	250	250	250	250	250	250	250

x Available – Not available

Issued by Mercedes-Benz Truck Marketing, Tongwell, Milton Keynes, MK15 8BA. Telephone 0800 090 090 or visit www.mbtrucks.co.uk/slt

The contents of this brochure are not binding and the right is reserved to make modifications without notice.
Please consult your local Mercedes-Benz Commercial Vehicle Dealer for further information.

March 2014 CV1224