

*THE*  
**PHAETON**  
HANDCRAFTED



Das Auto.





Outstanding quality down to the smallest detail.

THE PHAETON.  
NOW YOU'VE ARRIVED.



Model shown is 3.0 litre V6 TDI 245 PS 4MOTION LWB with optional 18" 'Experience' alloy wheels.



Even before it is taken on its first drive, the Phaeton has already experienced an eventful journey. The Phaeton is one of the few cars in the world that is predominantly assembled by hand, with only three robots involved in its production. Other than that, it is purely in the hands of highly trained experts. Another unique feature of this unusual environment is the way in which the Phaeton moves silently through the production process. The Canadian maple and cured oak floor ensures both minimum noise and absolute concentration. Combined with the unique levels of light that only the Glass Factory can afford, it is certainly more of an artist's studio, than a production line.

## *AN OASIS IN THE WORLD OF THE AUTOMOBILE.*



TRADITION  
AMBITION  
PRECISION

*BEAUTIFULLY  
FROM*

*CRAFTED  
THE FINEST MATERIALS.*





## THE DIFFERENCE IS IN THE DETAIL.

Uncompromising build quality transforms everyday items into works of art throughout the Phaeton. Take the analogue clock, for example. Centrally located in the dashboard and beautifully finished in polished chrome, its contemporary styling creates a classic, timeless design.



As soon as you sit in the Phaeton, you'll appreciate its luxurious interior and attention to the smallest details. Elegant and stylish, the sumptuous leather upholstery in the Phaeton's interior ensures you feel totally at home.

# FINALLY: SILENCE.

*EVERY JOURNEY, ONE OF  
PURE PEACE AND ENJOYMENT.*



Such is the supreme ride comfort of the Phaeton that every journey becomes an experience of pure driving enjoyment rather than simply travelling to your destination. If required, a range of optional driver assistance systems are available to make driving even easier, such as Side Scan to help you change lanes safely by monitoring the road around you, or Adaptive Cruise Control (ACC) maintaining a constant distance from the car in front. In addition, the Continuous Damping Control (CDC) air suspension fitted as standard, enables the vehicle to deliver the ultimate in smoothness of ride, reducing to a bare minimum pitch and roll movements, which occur when accelerating, braking suddenly or cornering. You can manually raise the chassis if you wish for an even smoother ride, and at high speeds it automatically lowers again to reduce the air resistance. Every Phaeton is equipped with the sophisticated 4MOTION four-wheel drive system, which adjusts the distribution of the drive power according to the road conditions within fractions of a second. Even in critical situations, this provides excellent traction, ensuring the vehicle remains safe, secure and calm.

Luxury redefined.

Nothing is quite as important to the driving experience as comfortable seating, and practically nowhere will you see and feel seats of the very finest quality than in the Phaeton. Supple, handcrafted leather is soft and luxurious, and the contoured front seats are 12-way electrically adjustable, enabling you to find your optimum driving position, significantly increasing driving safety.



Only the very best materials are used in the passenger compartment of the Phaeton. A combination of classic woods, luxurious leathers and polished chrome, all perfectly matched to one another, create an interior that is stylish, innovative and inviting. And while the latest technology ensures the ultimate in functionality, the abundance of natural materials maintains a heritage of handcrafted, precision detailing. This is luxury on the highest scale.

Perforated Corn Silk Beige 'Vienna' leather\* on 'Classic' seats with electric 12-way adjustment come as standard.

\* Some parts of leather interior will contain artificial leather.





Interior shown is 3.0 litre V6 TDI 4MOTION LWB with optional Corn Silk Beige 'Sensitive' leather upholstery, 'Eucalyptus' extended wood pack and keyless entry and keyless start.

## INTERIOR.

Behind the wheel of the Phaeton, the many functions and systems are all ergonomically positioned so that handling becomes intuitive, ensuring a relaxed, enjoyable driving experience. The centre console is stylishly yet sensibly designed, the round instrument panels are clearly arranged, and the multifunction leather trimmed steering wheel enables you to perform many different functions without taking your hands off the wheel. The full colour multifunction display provides a wealth of navigational details and information about your journey, such as average speed or your current and average fuel consumption, while the 8 inch touch-screen of the RNS 810 DVD satellite navigation/radio system allows easy access to the infotainment system, allowing you to select music and even play DVDs when stationary. As you can see, every function or piece of information you may need is all close to hand, every control located where you would intuitively expect it to be, and, flowing seamlessly around the centre console, the wood, leather and chrome creates a feeling of space, style and calm – providing the perfect backdrop for the dashboard's most-loved detail, the beautiful analogue clock.

The **extended wood pack** offers a choice of standard or optional wood finishes, adding an extra touch of style and refinement to the interior. This includes wooden inserts in the door grab handles, as well as a second wooden inlay in the armrests of the doors. Optional on all models.



The **heated multifunction leather steering wheel\*** not only has integrated operating buttons for the multifunction computer, cruise control and stereo options, it also warms your hands on cold days.

\* Optional on all models and only with optional Memory pack or front comfort seats.



The **electric sunblind** on the rear windscreen transforms dazzling sunshine into soft light without limiting vision and is available individually or as part of a package that includes manual sunblinds on the rear side windows. Standard on LWB model and optional on SWB model.

**Manually operated sunblinds** integrated in the rear side windows protect rear seat passengers from direct sunlight. Standard on LWB model and optional in conjunction with the electric sunblind option on SWB model.



The **electric glass sunroof** features an integrated deflector that adjusts automatically depending on the size of the roof opening and road speed, helping to reduce wind noise and draughts. Standard on LWB model and optional on SWB model.



The **perforated 'Vienna' leather\* 'Classic' front seats with electric 12-way adjustment** allow you to alter the seat height, seat and backrest incline, lumbar support and distance to the dashboard, easily and conveniently, using the control panel on the outer side of the seat. The optional Memory pack also retains driver's and front passenger's seating positions, as well as storing adjustments for the steering column, interior rear-view mirror, door mirrors and seat belts, adjusting them automatically at the touch of a button.

The optional **perforated 'Sensitive' leather\* upholstery with 18-way electrically-adjustable front comfort seats with Memory pack**, includes leather trim on the rear sides of the front seats and trim on the doors, armrests, handles, storage boxes and below the window. These seats are equipped with active lumbar support and an electronic massage function, enabling your lower back muscles to be gently massaged whenever you wish. The climate control function for front comfort seats emit warm or cool air conditioning as you require, and you can also adjust the front head restraints and seat depth, ensuring the optimum seating position, which can then be stored in the memory function.



'Vienna' and 'Sensitive' leather\* front comfort seats with 18-way adjustment and Memory pack are optional on all models.

'Sensitive' leather\* front comfort seats with 18-way adjustment, Memory pack, massage function and air conditioning are optional on all models.

\* Some parts of leather interior will contain artificial leather.

# A MASTERPIECE OF ADVANCED ENGINEERING. HAND CRAFTED

Charismatic, powerful, stylish, the Phaeton delivers from every perspective. In the elegant front design, the front headlights flow seamlessly into the radiator grille, creating a strong visual presence and giving the Phaeton its characteristic look. The Bi-xenon headlights are housed in matt black surrounds, complementing the chrome trimmed radiator grille, while the front fog lights, daytime running lights, integrated indicators and rear number plate lights all utilise LED technology, enhancing the Phaeton's contemporary styling as well as providing better illumination when driving.



# CRAFTED



Model shown is 3.0 litre V6 TDI 245 PS 4MOTION LWB with optional 18" 'Experience' alloy wheels.

## EXTERIOR.

The true test of a classic design is its timeless appeal and the Phaeton passes this test with flying colours. It takes the legendary silhouette of the large saloon and adds an elegance and panache all of its own that will remain as fresh tomorrow as it is today. Of course, styling and aesthetics are only half the story, and the Phaeton also displays exceptional build quality.

The **coming/leaving home lighting function** ensures you not only arrive home safely, but also get straight to your front door. For up to four minutes after locking or unlocking your vehicle, the headlights, rear lights and door mirror lights brighten the surrounding area, which makes getting in and out of the car a great deal safer and easier.



Optional **keyless entry and keyless start** allows the vehicle's electronics to communicate with the key. Unlocking the doors is achieved by touching the door handle and it also controls the optional Memory pack, as well as enabling you to start the engine using the Start/Stop button in the centre console, all without taking the key out of your pocket. Optional on all models.



**LED daytime running lights** come on automatically when switching on the ignition, and **Bi-xenon headlights** for dipped and main beam with automatic range adjustment and dynamic curve lighting, continually direct the headlights in the driving direction for greatly improved illumination, particularly when cornering. Headlight washers provide a welcome addition, allowing the headlights to remain free from dirt. When turning, the **LED static cornering lights** situated beneath the front fog lights are activated to provide a better vision at close range.



The **electrically heated, adjustable and foldable door mirrors** can be heated separately and each features LED indicators as well as integrated surrounding area lighting.



Powerful proportions combine with classic styling to give the Phaeton its unique rear design. **Tinted rear light clusters incorporating LED technology** create a strong image, especially at night, with a look that's dynamic, contemporary and exciting.



The front design of the Phaeton reveals the craftsmanship and passion with which it was designed and built. The front headlights flow seamlessly into the bodywork, creating a strong visual presence, while the **Bi-xenon headlights** are housed in matt black, highlighting the polished chrome trimmed radiator grille and giving the Phaeton its characteristic look.



In **auto mode**, the vents of the climate control – 4Zone electronic air conditioning system open and close automatically, to help maintain your chosen temperature.



**Cruise control** maintains a set speed from 19mph upwards, ensuring a more relaxing drive, especially on long journeys.

The climate control – 4Zone electronic air conditioning system including air quality/anti-misting sensor with automatic air recirculation and indirect ventilation, allows each occupant to select their preferred choice of temperature. The system is sensitive to all external influences, such as the position of the sun, amount of sunlight and outside temperature, and makes adjustments to ensure the correct temperature is maintained. A sensor also measures air humidity within the passenger compartment constantly, automatically correcting it if necessary. On the long wheelbase model, climate control – 4Zone electronic air conditioning also includes an additional touch-screen control panel in the rear, providing individual controls for every seat. Rear control panel is also available as an option on SWB models.

The rear control panel is in lieu of CD autochanger mounted in glove compartment.



**Bluetooth telephone connection\*** for HFP (Hands Free Profile) enabled telephones allows you to use your compatible mobile phone without taking it out of your pocket. Operation can take place using either the leather trimmed multifunction steering wheel, the RNS 810 DVD satellite navigation/radio system display or via voice control with settings and functions easily read on the multifunction display.

\* Phones must be Bluetooth HFP (Hands Free Profile) and rSAP (remote SIM Access Profile) compatible, please contact your authorised Volkswagen retailer for specific phone compatibility.





**Multifunction heated leather trimmed steering wheel\*** offers excellent grip, looks extremely stylish and enables easy operation of the audio functions, cruise control, Bluetooth telephone connection and multifunction computer. Optional on all models.

\* Only with optional Memory pack or 18-way electrically-adjustable front comfort seats.

The **auxiliary parking heater** can be activated via remote control from up to 600 metres away, ensuring warm seats, clear vision and no steamed-up windows before you get in the car, providing greater comfort and safety on cold winter days. Optional on all models.



The **multifunction computer with five inch colour screen** provides a wealth of navigational details and information about your journey, such as average speed or your current and average fuel consumption. It also displays information on some options available for your Phaeton. The optional Adaptive Cruise Control (ACC) function helps to avoid accidents by always keeping your car at a safe distance from the vehicle in front, making driving much easier in stop-start traffic. It builds on the cruise control system by including Front Assist, a radar sensor that detects traffic slowing ahead and reduces your speed accordingly.

The **RNS 810 DVD satellite navigation/radio system** is our most powerful navigation system with the latest multimedia technology to guide you to your destination safely and easily using preloaded navigation data on the 30 GB hard drive. With a clear eight inch touch-screen colour display and integrated voice control, it's designed to make your journey effortless. The integrated DVD drive allows you to play videos, or music via the six CD autochanger on SWB models, SD card reader or the 30 GB hard drive, using audio files, MP3 or WMA formats. Stay in touch safely while you're on the move, thanks to our standard telephone connection, a state-of-the-art communications unit with Bluetooth\* wireless technology rSAP (remote SIM Access Profile) and HFP (Hands Free Profile). Each element is activated by voice recognition or via the infotainment system. Please contact your authorised Volkswagen retailer for specific phone compatibility.

\* Phones must be Bluetooth HFP (Hands Free Profile) and rSAP (remote SIM Access Profile) compatible, please contact your authorised Volkswagen retailer for specific phone compatibility. Note, the DVD playback will not function whilst the navigation system is in use, or the vehicle is in motion.



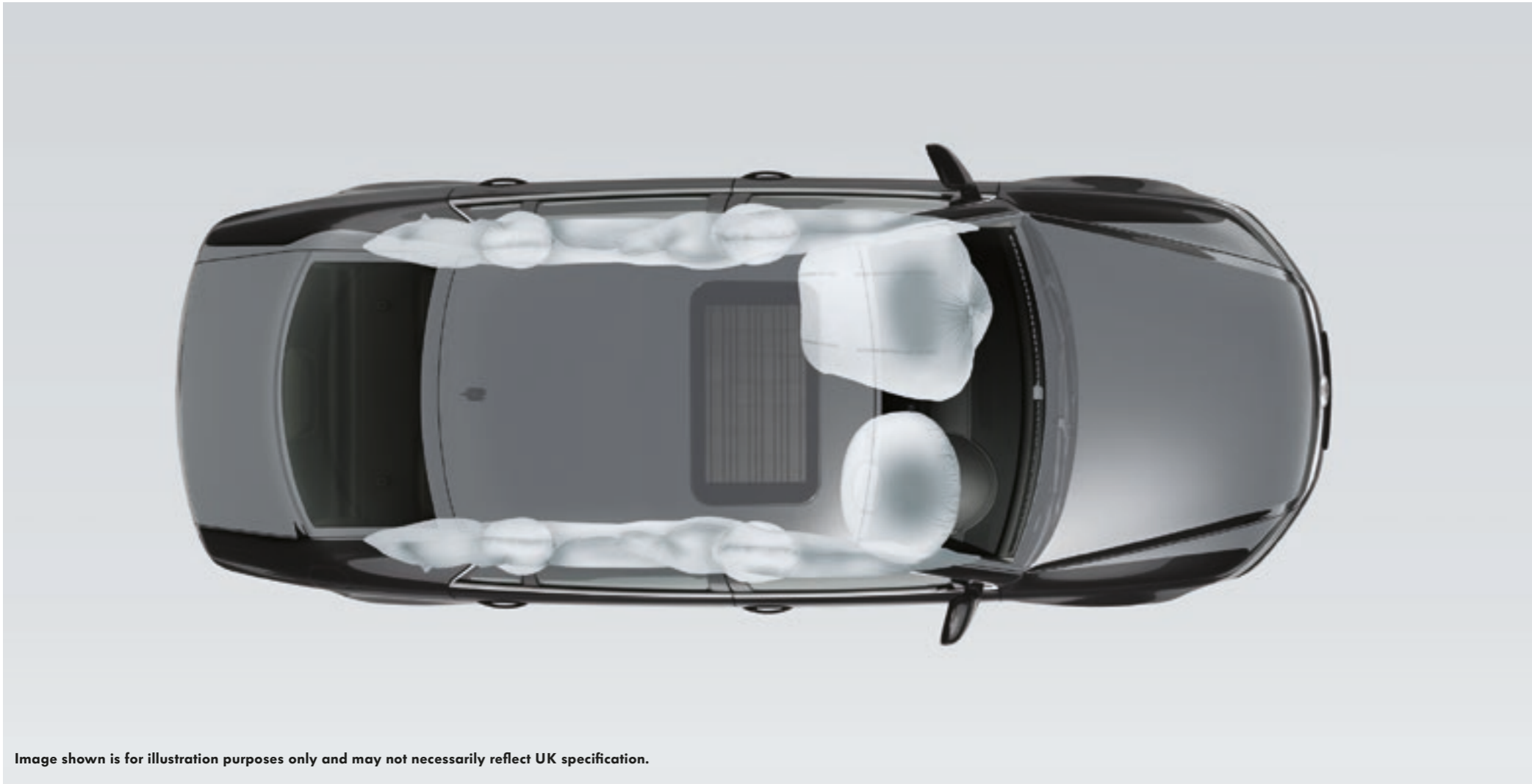


Image shown is for illustration purposes only and may not necessarily reflect UK specification.

As you would expect with such a luxurious saloon, the Phaeton is equipped with some of the most efficient safety technologies available today, providing maximum protection for each and every occupant. This includes a host of passive safety systems to minimise the risk of injury both to passengers and other road users, and a range of active safety features to help you avoid accidents in the first place.

Occupants of the Phaeton are protected by a total of eight airbags, comprising two front airbags, four side airbags and two curtain airbags. All are controlled by innovative early crash sensors, which are positioned on different points of the bodywork and, in the event of an accident, supply exact information about the severity and angle of the crash. As a result, individual airbags can respond independently of each other and to within a thousandth of a second.

The **ESC (Electronic Stability Control)** utilises sensors to detect critical situations at an early stage, reacting within milliseconds by controlling the speed of individual wheels, helping to bring the vehicle under control.



The Phaeton is equipped with an elaborate 'pre-crash concept', designed to support the driver in critical situations and making the idea of an intelligent safety system a reality. This includes a number of proven technologies all fitted as standard, for example ABS (Anti-Lock Braking System), ESC (Electronic Stability Control), ASR (Anti-Slip Regulation) and a dusk sensor that automatically switches on the dipped beam headlight when it detects diminishing light or when travelling at higher speeds.

An **optical and audible warning** is displayed to the driver if the front or rear seat occupants have not fastened their seat belts or have not fastened them correctly.



**Front fog lights** with static light cornering function on the Phaeton utilise LED technology, offering better illumination than conventional lights and enhancing the stylish front design.





At Volkswagen we take your safety very seriously, that's why we build our cars to offer maximum protection in the event of an accident. Deployment of the **driver's and front passenger's airbags** is activated by crash sensors. When an impact is registered, the airbag control unit ignites the gas generator, which then inflates the airbag within less than 40 milliseconds, helping to reduce injuries significantly.

The standard **tyre pressure monitoring system** informs you, audibly and also via the multifunction display, of any loss in tyre pressure. Not only does permanent monitoring ensure a high degree of safety, but correct tyre pressure also extends the life of the tyres and reduces fuel consumption.



Safety for pedestrians is also taken into consideration. In the event of an accident, **windscreen wipers retract automatically** beneath the bonnet, further reducing the risk of injury.



When manoeuvring into a parking space, the **parking sensors** notify the driver via acoustic and optical signals how much space remains between other vehicles or obstacles in front and behind, ensuring easy and safe parking.



In the unfortunate event of a rear impact the **safety-optimised front head restraints** move forward automatically to help reduce the risk of whiplash injury.

For safer driving in wet weather, the **rain sensor** automatically regulates the frequency of your windscreen wipers according to how heavily it is raining. The sensor incorporated into the interior rear-view mirror housing detects the amount of rainfall on your windscreen and adjusts the wipers accordingly.





POWER AND CONTROL. **AUTOMOTIVE**



Model shown is 3.0 litre V6 TDI 245 PS 4MOTION LWB with optional 18" 'Experience' alloy wheels.

Smooth, safe, secure.  
Nothing compares to the  
ride comfort of the Phaeton.



## ENGINE.



Sophisticated, powerful and advanced, the Phaeton's engine offers unprecedented levels of performance and efficiency. The smooth running 3.0 litre V6 TDI diesel engine is a technological masterpiece transmitting its power via an automatic tiptronic gearbox fitted as standard, which adapts to your driving style, ensuring smooth and barely perceptible gear changes.

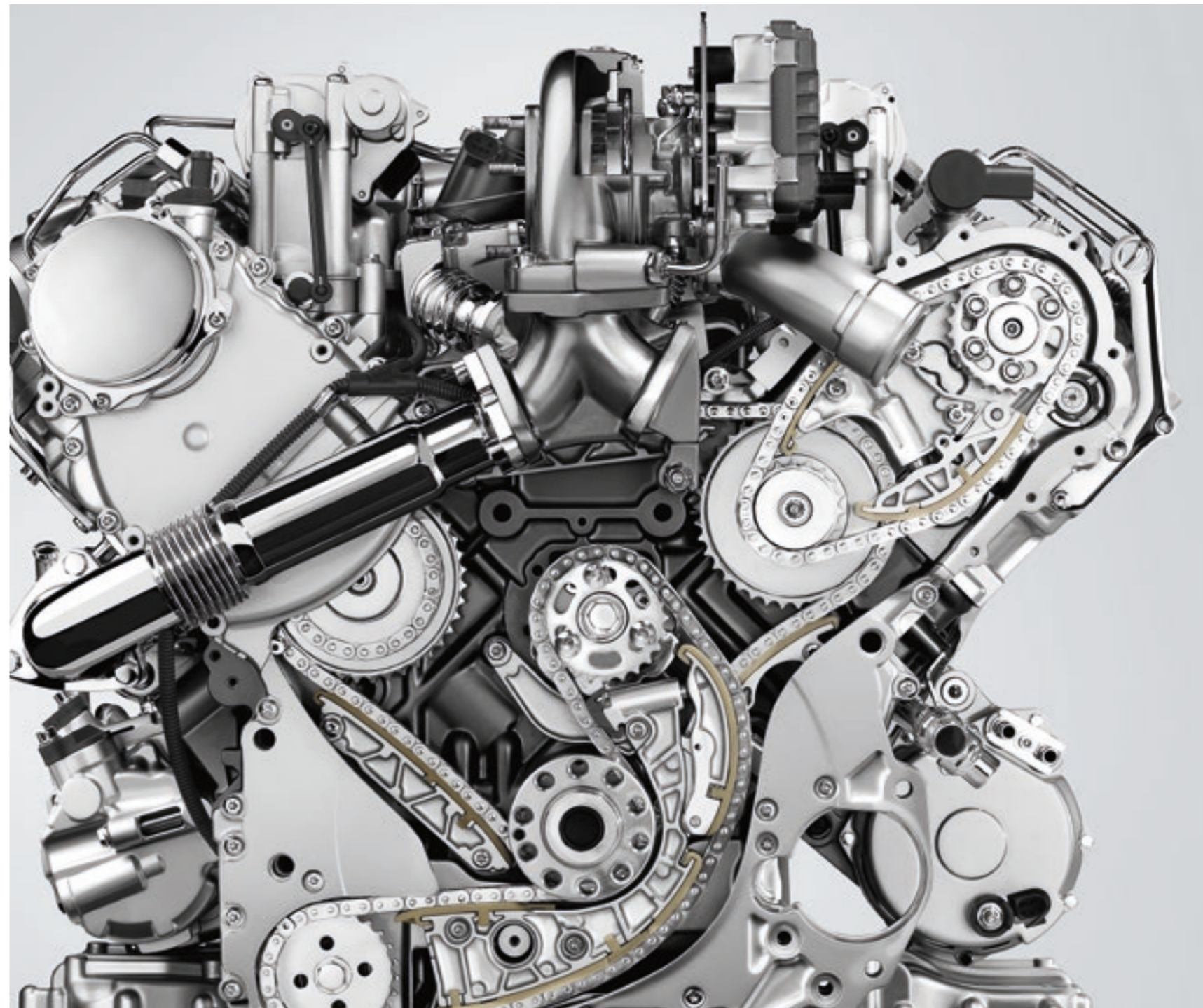




Image shown is for illustration purposes only and may not necessarily reflect UK specification.

## CHASSIS AND GEARBOX.

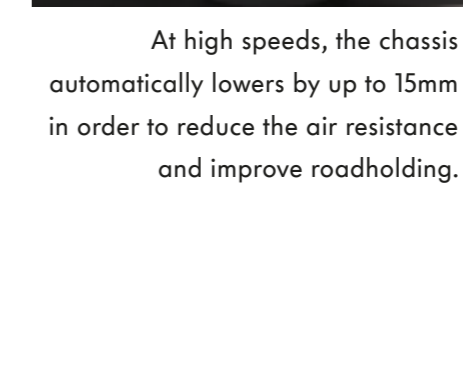
An automatic tiptronic gearbox is fitted as standard within every Phaeton and provides the convenience of an automatic with the driving enjoyment and sportiness of a manual gearbox.

Impressive engine performance requires perfectly matched power transmission to ensure the ultimate in ride comfort and enjoyment. To ensure this, the Phaeton is equipped with two sophisticated drive systems. Firstly, an electronically controlled air suspension system, Continuous Damping Control (CDC), adapts automatically to road conditions, delivering the ultimate in smoothness of ride. At high speeds, the chassis is lowered, on uneven surfaces the chassis is raised, and in comfort mode, soft damping ensures a more comfortable ride. When cornering, the damping automatically adjusts to improve roadholding, and automatic self-levelling control recognises and balances any weight differences within the car.

Secondly, the intelligent 4MOTION four-wheel drive system redistributes drive power between the axles, adapting each individual wheel to the road conditions within fractions of a second, providing excellent traction, even in bad weather. With better roadholding, greater drive and improved levels of safety all round, it means you can look forward to pure driving enjoyment, rather than simply travelling to your destination.



If necessary, the electronically controlled air suspension system raises the chassis automatically by up to 25mm, ensuring the highest level of ride comfort even on bumpy routes.



At high speeds, the chassis automatically lowers by up to 15mm in order to reduce the air resistance and improve roadholding.

## INTELLIGENT SYSTEMS TO ASSIST AND PROTECT.

You can only relax totally when you feel completely safe, and for that reason the Phaeton now comes with a range of optional driver assistance systems, which give new meaning to the phrase 'intelligent driving'. Adaptive Cruise Control\* (ACC), for example, in conjunction with Front Assist, a radar sensor controlled distance monitoring system, helps you avoid collisions. The system detects if the vehicle ahead is slowing down and automatically decelerates your vehicle. Should you get too close to the car in front, your vehicle will automatically brake to maintain a safe distance and if necessary, bring the Phaeton to a complete stop. Another optional safety system is the enhanced, radar sensor controlled Side Scan that monitors blind spots either side of the vehicle, helping you to change lane safely. This intelligent safety system is automatically activated from 37mph. If you wish to park your Phaeton after your journey, the standard parking sensors give visual and acoustic signals, advising you how much space is available when parking. Additionally, the optional rear-view camera relays images to the infotainment system enabling you to park easily and safely, even under difficult conditions.



\* Please note: when the ACC system is switched on, the driver is still fully responsible for watching their speed and distance to the vehicle in front. This assistance system should not be used on winding roads and in adverse weather conditions or heavy rain.



**Side Scan\*** assists you if you want to change lane safely at speeds over 37mph. The system warns you of any road users in your blind spot via a warning light within the door mirrors and an audible warning within the vehicle. Optional on all models.

\* Only with optional Memory pack or 'Vienna'/'Sensitive' leather comfort seats.

**Adaptive Cruise Control (ACC)** adapts your speed to that of the vehicle ahead and maintains a constant distance set by the driver. If the Front Assist system detects you are getting too close to the vehicle in front, it will warn you of the danger with visual and acoustic signals, and then will automatically start braking, to a standstill if necessary. Optional on all models.



The **rear-view camera** gives you a view of the area behind your Phaeton. Camera images are transmitted to the infotainment display, where superimposed lines indicate the path you should take when reversing. Optional on all models.



## THE ULTIMATE IN HIGH-END ENTERTAINMENT.

A state-of-the-art audio system transforms the interior of the Phaeton into a concert room, with the latest speaker technology ensuring every occupant enjoys an unparalleled acoustic experience.

One audio system is available, tailored specifically to the interior of the Phaeton. The standard 'Dynaudio' soundpack provides an incomparable sound experience, with the latest speaker technology delivering exceptional acoustics. Precision bass tones, natural middle tones and crystal-clear high tones provide phenomenal detail and together with a twelve channel digital amplifier supplying 1,000 watts through twelve speakers, it makes for a system any music lover would find irresistible.



The **Multi Device Interface (MDI)** with iPod connection cables including the latest generation Lightning to 30-pin adaptor, lets you play your choice of music from your own external audio device, via your car's sound system, offering you a fast and easy link to files on your MP3 player, iPod or USB device. You can navigate folders or menus simply via the Phaeton's touch-screen navigation/radio system, with the track playing shown on the audio display. Optional on all models.



As you would expect from such a luxury saloon, the Phaeton is equipped with the very latest **multimedia system**, giving you satellite navigation or optional TV reception\*. Along with the fine quality wood and leather, the soundproofed interior and the exceptional acoustics, it all goes to make a driving experience that is truly second to none.

When your vehicle is stationary, the optional TV reception receives both analogue and digital television (DVB-T), providing excellent picture and sound quality. If the digital signal is missing or too weak, the tuner automatically switches to analogue reception.

\* The TV will only operate when the vehicle is stationary and the handbrake has been applied. TV sound reception is available at all times.

The Phaeton 3.0 litre V6 TDI engine delivers a high level of performance alongside lower fuel consumption and improved CO<sub>2</sub> emissions. The short and long wheelbase models on average, consume just 33.2mpg on the Combined fuel cycle\* with a CO<sub>2</sub> of 224g/km, and accelerates from 0 to 62mph in 8.3 and 8.6 seconds respectively. This extremely smooth running diesel engine achieves 245 PS and provides an impressive 500 Nm of torque, giving immense pulling power in the low-speed rev range, which additionally lowers fuel consumption and driving noise.

\* Please see pages 58-59 for CO<sub>2</sub> emissions and fuel consumption figures.



Model shown is 3.0 litre V6 TDI 245 PS 4MOTION LWB with optional 18" 'Experience' alloy wheels.

STYLISH ALLOYS.  
THE PERFECT  
FINISHING TOUCH.



'Spirit' 8½J x 18 inch alloy wheels with 255/45 R18 tyres and anti-theft wheel bolts. Standard on all models.



'Dynamic' 7½J x 18 inch alloy wheels with 235/50 R18 tyres and anti-theft wheel bolts. Available as a no cost option on all models.



'Experience' 8½J x 18 inch alloy wheels with 235/50 R18 tyres and anti-theft wheel bolts. Available as a no cost option on all models.



'Innovation' 8½J x 18 inch alloy wheels with 255/45 R18 tyres and anti-theft wheel bolts. Available as a no cost option on the LWB model.



Model shown features optional 18" 'Experience' alloy wheels.



'Aristoteles' 8½J x 18 inch alloy wheels with 255/45 R18 tyres and anti-theft wheel bolts. Optional on all models.



'Serres' 8½J x 19 inch alloy wheels\* with 245/45 R19 tyres and anti-theft wheel bolts. Optional on all models.



'Helios' 8½J x 19 inch alloy wheels\* with 255/40 R19 tyres and anti-theft wheel bolts. Optional on all models.



'Omanyt' 9J x 19 inch alloy wheels\* with 255/40 R19 tyres and anti-theft wheel bolts. Optional on all models.

\* Full size spare alloy wheel replaced with TyreFit emergency repair kit.

## Paint.

The Phaeton comprises approximately 8,100 individual parts, each and every one precision-manufactured to meet your expectations. A wide choice of exterior colours add the finishing touches to your Phaeton.



Please note: the print processes do not allow exact reproduction of the paint colours.

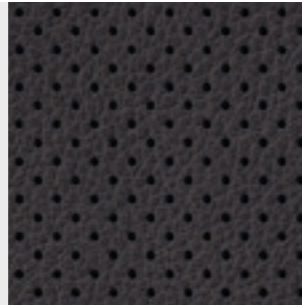


## Upholstery.

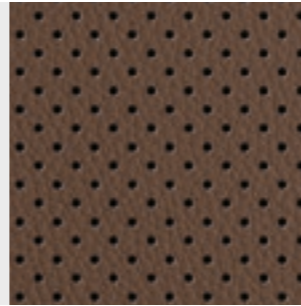
Sit inside the Phaeton, and you'll find an interior that satisfies your every desire. Supple leather has been treated in forty different stages and is especially durable, with over a hundred hand-finished seams. Everywhere it is a story of meticulous craftsmanship and exceptional attention to detail.

**Standard perforated 'Vienna' leather\* on 'Classic' seats with electric 12-way adjustment**

Anthracite  
LA



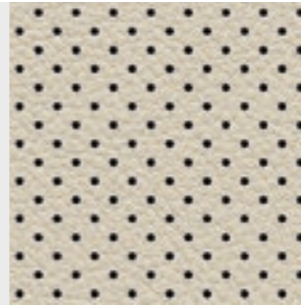
Seville  
PL



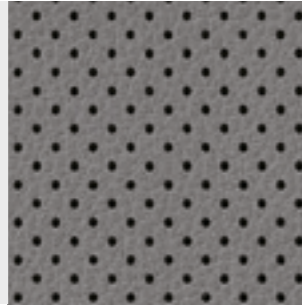
Corn Silk Beige  
PN/WG



St. Tropez  
PK/PC



Crystal Grey  
LB



\* Some parts of leather interior will contain artificial leather.  
Please note: the print processes do not allow exact reproduction of the upholstery colours.



Interior shown features sumptuous and durable perforated Corn Silk Beige 'Vienna' leather\* upholstery.

**Upholstery (continued).**

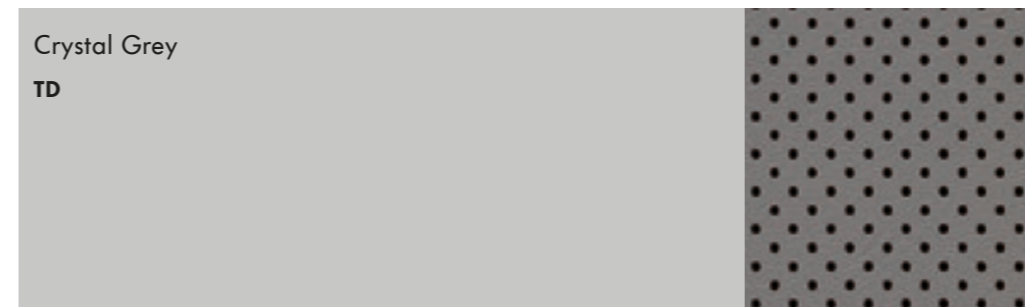
**Optional perforated 'Vienna' leather\*\*  
Front comfort seats with electric 18-way adjustment including Memory pack**



\* Optional at extra cost.  
† Some parts of leather interior will contain artificial leather.

Please note: the print processes do not allow exact reproduction of the upholstery colours.

**Optional perforated 'Sensitive' leather\*\*  
Front comfort seats with electric 18-way adjustment including Memory pack,  
massage function and air conditioned front seats**



## Decorative inserts.

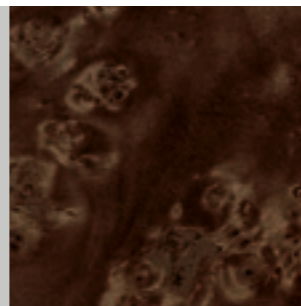
The Phaeton's polished wood inserts are produced from trees that have matured to seventy years of age in a mild Pacific climate.

'Eucalyptus'  
Decorative insert  
7TE



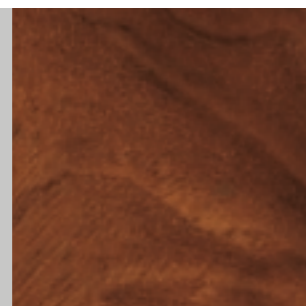
Standard on all models

'Poplar'  
Decorative insert  
5MC



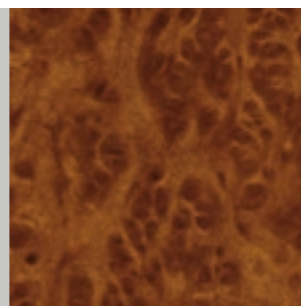
Optional on all models

'Burr Walnut'  
Decorative insert  
5MG



Optional on all models

'Vavona'  
Decorative insert  
5TW



Optional on all models

Standard Optional at extra cost

Please note: the print processes do not allow exact reproduction of the decorative insert colours.



## Combinations.

Seat upholstery  
↓

### Perforated 'Vienna' leather\* on 'Classic' seats with electric 12-way adjustment on front seats

	Roof lining ↓	Optional roof lining ↓
Anthracite (LA)	Crystal Grey	Anthracite
Corn Silk Beige (PN)	Corn Silk Beige	
Corn Silk Beige (WG)	Corn Silk Beige	
Crystal Grey (LB)	Crystal Grey	Anthracite
Seville (PL)	Corn Silk Beige	
St. Tropez (PK)	St. Tropez	
St. Tropez (PC)	St. Tropez	

### Perforated 'Vienna' leather\* on comfort seats with electric 18-way adjustment on front seats including Memory pack

	Roof lining ↓
Anthracite (LA)	Crystal Grey
Corn Silk Beige (PN)	Corn Silk Beige
Corn Silk Beige (WG)	Corn Silk Beige
Crystal Grey (LB)	Crystal Grey
Seville (PL)	Corn Silk Beige
St. Tropez (PK)	St. Tropez
St. Tropez (PC)	St. Tropez

### Perforated 'Sensitive' leather\* on comfort seats with electric 18-way adjustment on front seats including Memory pack, massage function and air conditioned front seats

	Roof lining ↓	Optional roof lining ↓
Anthracite (TC)	Crystal Grey	Anthracite
Corn Silk Beige (PP)	Corn Silk Beige	
Corn Silk Beige (UZ)	Corn Silk Beige	
Crystal Grey (TD)	Crystal Grey	Anthracite
Seville (PM)	Corn Silk Beige	
St. Tropez (PI)	St. Tropez	
St. Tropez (PD)	St. Tropez	

Carpets  
↓

	Dashboard ↓	Black Non-Metallic A1 ↓	Campanella White Non-Metallic R6 ↓	Serpentine Grey Metallic TV ↓	Cairo Metallic 2N ↓	Silver Leaf Metallic 7B ↓	Reflex Silver Metallic 8E ↓	Blackberry Metallic C0 ↓	Pewter Grey Metallic M8 ↓	Mazeppa Grey Metallic N8 ↓	Deep Black Pearl Effect 2T ↓	Mocca Anthracite Pearl Effect 3Q ↓	Luna Blue Pearl Effect S5 ↓
Anthracite	Anthracite/Anthracite	●	●	●	●	●	●	●	●	●	●	●	●
Espresso	Dark Brown/Corn Silk Beige	●	●	●	●	●	●	●	●	●	●	●	●
Corn Silk Beige	Dark Brown/Corn Silk Beige	●	●	●	●	●	●	●	●	●	●	●	●
Crystal Grey	Anthracite/Crystal Grey	●	●	●	–	●	–	●	●	●	●	●	●
Espresso	Dark Brown/Seville	●	●	●	●	●	●	●	●	●	●	●	●
St. Tropez	Anthracite/Anthracite	●	●	●	●	●	●	●	●	●	●	●	●
Anthracite	Anthracite/Anthracite	●	●	●	●	●	●	●	●	●	●	●	●

	Dashboard ↓	Black Non-Metallic A1 ↓	Campanella White Non-Metallic R6 ↓	Serpentine Grey Metallic TV ↓	Cairo Metallic 2N ↓	Silver Leaf Metallic 7B ↓	Reflex Silver Metallic 8E ↓	Blackberry Metallic C0 ↓	Pewter Grey Metallic M8 ↓	Mazeppa Grey Metallic N8 ↓	Deep Black Pearl Effect 2T ↓	Mocca Anthracite Pearl Effect 3Q ↓	Luna Blue Pearl Effect S5 ↓
Anthracite	Anthracite/Anthracite	●	●	●	●	●	●	●	●	●	●	●	●
Espresso	Dark Brown/Corn Silk Beige	●	●	●	●	●	●	●	●	●	●	●	●
Corn Silk Beige	Dark Brown/Corn Silk Beige	●	●	●	●	●	●	●	●	●	●	●	●
Crystal Grey	Anthracite/Crystal Grey	●	●	●	–	●	–	●	●	●	●	●	●
Espresso	Dark Brown/Seville	●	●	●	●	●	●	●	●	●	●	●	●
St. Tropez	Anthracite/Anthracite	●	●	●	●	●	●	●	●	●	●	●	●
Anthracite	Anthracite/Anthracite	●	●	●	●	●	●	●	●	●	●	●	●

	Dashboard ↓	Black Non-Metallic A1 ↓	Campanella White Non-Metallic R6 ↓	Serpentine Grey Metallic TV ↓	Cairo Metallic 2N ↓	Silver Leaf Metallic 7B ↓	Reflex Silver Metallic 8E ↓	Blackberry Metallic C0 ↓	Pewter Grey Metallic M8 ↓	Mazeppa Grey Metallic N8 ↓	Deep Black Pearl Effect 2T ↓	Mocca Anthracite Pearl Effect 3Q ↓	Luna Blue Pearl Effect S5 ↓
Anthracite	Anthracite/Anthracite	●	●	●	●	●	●	●	●	●	●	●	●
Espresso	Dark Brown/Corn Silk Beige	●	●	●	●	●	●	●	●	●	●	●	●
Corn Silk Beige	Dark Brown/Corn Silk Beige	●	●	●	●	●	●	●	●	●	●	●	●
Crystal Grey	Anthracite/Crystal Grey	●	●	●	–	●	–	●	●	●	●	●	●
Espresso	Dark Brown/Seville	●	●	●	●	●	●	●	●	●	●	●	●
St. Tropez	Anthracite/Anthracite	●	●	●	●	●	●	●	●	●	●	●	●
Anthracite	Anthracite/Anthracite	●	●	●	●	●	●	●	●	●	●	●	●

Standard    Optional at extra cost    ● Standard    – Not available

\* Some parts of leather interior will contain artificial leather.

# There's a Volkswagen for all of us.

Nippy city run around? Luxurious executive saloon? Open-top cruiser? Whatever it is you're looking for, we probably have it. From the iconic Beetle and Golf GTI to the up! and fuel-efficient BlueMotion Golf, there's a Volkswagen for everyone.

If you're thinking you might like to try a different Volkswagen, take a look at the selection below to see what else we have. There are 21 models in our range, so there's bound to be at least one that catches your eye.

To see these models and configure your ideal Volkswagen, visit: [www.volkswagen.co.uk](http://www.volkswagen.co.uk)



## Efficient

Our BlueMotion models benefit from innovative energy-saving technology that helps you optimise fuel consumption and reduce harmful emissions. This includes low rolling resistance tyres and improved aerodynamics, accompanied with advanced engines and gearboxes. Choose from the BlueMotion Polo, Golf, Golf Estate and Golf SV.

However, BlueMotion Technology can be found across our range where automatic Start/Stop technology and brake energy recuperation is standard on the majority of our engines, helping you to save more money by being more efficient.



## Spacious family cars

**Sharan:** The ultimate in convenience with sliding rear doors, and enough space for the whole family. And their luggage. And the dogs.

If it's space you're after, then you might also like to consider the Tiguan, Golf SV, Golf Estate, Touran and new Passat Estate.



## Style

**Beetle:** The original icon. And still the most unique way to make a fashion statement.

For more fun with the top down, why not consider Beetle Cabriolet, Golf Cabriolet or Eos.



## Executive

**Volkswagen CC:** Perfectly turned out high-tech, executive luxury. A contemporary, stylish and innovative coupé.

All the luxury you need can also be found in the top of the range Phaeton, and executive comfort in the new Passat, new Passat Estate and Jetta.



## 4x4

**New Touareg:** The SUV just got smarter. True four by four capability off-road, and smooth, luxurious and powerful when on it. Features four wheel drive technology, '4MOTION', as standard for optimum road grip, stability and control.

Go anywhere, do anything in our four wheel drive alternatives: Tiguan and new Passat and Estate 4MOTION models.



## Sporty

**Golf:** As exciting to drive as it is to look at. Style, performance and power.

You will also find our sporty gene in the iconic Golf GTD and R. Or for something more refined and elegant, there's the Eos too.



## City run around

**up!:** The ideal city car. Efficient, fun and surprisingly spacious, with that trademark Volkswagen solidity.

If you're looking for something slightly more spacious, then why not consider the up!'s bigger sibling, the Polo. City run around efficiency with more versatility and even more space can be found on the iconic Golf – winner of 'World Car of the Year 2013'.

## Technical specification.

	3.0 litre V6 TDI 245 PS SWB	3.0 litre V6 TDI 245 PS LWB
<b>ENGINE</b>		
Engine type	Six cylinder diesel	Six cylinder diesel
Cubic capacity, ltrs/cc	3.0/2967	3.0/2967
Max. output, PS <sup>(01)</sup> /kW	245/180	245/180
at rpm	4000	4000
Max. torque, lbs.ft/Nm	369/500	369/500
at rpm	1500-3000	1500-3000
Gearbox	6 speed auto tiptronic	6 speed auto tiptronic
<b>WEIGHTS, KGS</b>		
Unladen weight <sup>(02)</sup>	2261	2313
Gross vehicle weight	2780	2850
Payload <sup>(02)</sup>	594	612
Axle load limit: Front	1500	1510
Rear	1310	1370
<b>TRAILER LOAD LIMITS, KGS <sup>(03)</sup></b>		
Braked 12% incline	2500	2500
Unbraked	750	750
Towbar load limit	100	100
Roof weight	100	100

## NOTES

- 01) The maximum power output figures are quoted in PS (or Pferdestärke, which is the metric equivalent of horsepower). To convert from metric to imperial horsepower, divide the PS figure by 1.0139.
- 02) Figures are calculated in accordance with manufacturer's criteria. The individual unladen weight depends on the specification of the vehicle, this then reduces the possible payload accordingly. The unladen weight and payload both include the fuel tank 90% full, driver (68kg) and luggage (7kg) in line with EU directive 95/48.
- 03) With increasing altitude the engine performance diminishes. From 1,000m above sea level and for every 1,000m thereafter 10% of the vehicle/trailer weight (trailer weight + gross vehicle weight) must be deducted.
- 04) The use of 100% RME and FAME (bio diesel) is not possible. Forecourt diesel with up to 7% bio diesel content, adhering to standard BS EN 590, can be used in diesel engines. The use of ethanol in forecourt petrol meeting BS EN 228 is allowable.

- 05) The size of the fuel tank is approximate and therefore it may be possible to add a greater amount of fuel than the size of the tank specified, due to the space in the filler neck.
- 06) Fuel consumption and CO<sub>2</sub> figures are obtained under standardised EU test conditions (Directive 93/116/EEC). This allows a direct comparison between different manufacturer models but may not represent the actual fuel consumption achieved in 'real world' driving conditions. More information is available on the Volkswagen web site at [www.volkswagen.co.uk](http://www.volkswagen.co.uk) and at [www.vca.gov.org](http://www.vca.gov.org).
- 07) The weight of a vehicle will influence the level of CO<sub>2</sub> emission it produces; as a result, vehicles with higher levels of specification and factory-fitted options may emit higher levels of CO<sub>2</sub>.

	3.0 litre V6 TDI 245 PS SWB	3.0 litre V6 TDI 245 PS LWB
<b>PERFORMANCE</b>		
Top speed, mph (km/h), where law permits	147 (238)	147 (238)
Acceleration, seconds 0 - 62mph	8.3	8.6
ABI Insurance group, 1 - 50	45E	45E
<b>ENVIRONMENTAL INFORMATION</b>		
Fuel grade, minimum	Diesel 51 CN <sup>(04)</sup>	Diesel 51 CN <sup>(04)</sup>
Fuel tank capacity, galls/ltrs <sup>(05)</sup>	19.7/90	19.7/90
Official fuel consumption, mpg/ltr per 100km <sup>(06)</sup>		
Urban	24.4/11.6	24.4/11.6
Extra-urban	42.2/6.7	42.2/6.7
Combined	33.2/8.5	33.2/8.5
Official CO <sub>2</sub> emission, g/km <sup>(07)</sup>	224	224
Emission class	EURO 5	EURO 5
Noise, dB	70	70



## Technology.

### Engine

**3.0 litre V6 TDI 245 PS<sup>(01)</sup> (180 kW) diesel engine:** six cylinder 'V' engine, four valves per cylinder, two overhead camshafts per cylinder bank, turbocharger with variable turbine geometry, valve drive via roller valve levers, injection system of the third generation with Piezo inline injectors and 1,600 bar injection pressure.

01) The maximum power output figures are quoted in PS (or Pferdestärke, which is the metric equivalent of horsepower). To convert from metric to imperial horsepower, divide the PS figure by 1.0139.



### Running gear

- Front and rear independent suspension on double wishbones with acoustically insulated subframes
- Front and rear anti-roll bar

### Transmission

- 3.0 litre V6 TDI 245 PS: six speed automatic tiptronic gearbox
- 4MOTION permanent four wheel drive with Torsen gearbox as standard; self locking central differential with asymmetrical-dynamic drive distribution

## Dimensions.

	SWB	LWB
<b>EXTERIOR DIMENSIONS</b>		
Length, mm	5059	5179
Width, mm	1908	1908
Height, mm	1450	1450
Wheelbase, mm	2881	3001
Front/rear track width, mm	1630/1617	1630/1617
Turning circle, m	12.0 approx.	12.5 approx.
<b>INTERIOR DIMENSIONS</b>		
Effective front headroom, mm (sunroof)	974 (945)	(945)
Effective rear headroom, mm (sunroof)	970 (960)	(969)
Front elbow width, mm	1562	1562
Rear elbow width, mm	1528	1524
<b>MAXIMUM LUGGAGE CAPACITY, LITRES</b>		
(VDA measuring method using 200 x 100 x 50mm blocks)		
Capacity – rear seats upright including spare wheel well	500	500



## The ownership experience.

Owning and driving a Phaeton is an extremely rewarding experience. It's not just the performance, build quality, comfort and practicality that satisfies, the level of after-sales support is exemplary. To deliver such high levels of service, we've introduced a network of specialist service outlets, all having the necessary specialist equipment and high levels of skills required to look after your car. Within each specialist service outlet we have introduced a new team member. Licensed Technicians meet the highest standards within their field for professionalism, skill and knowledge. Our aim is to make buying and looking after your car more enjoyable.

When it comes to servicing, we appreciate that it may be more convenient for us to visit you. So, whether you're at home or the office, one quick and easy phone call is all it takes to arrange for a convenient collection and delivery. Naturally, we'll provide you with a replacement Volkswagen and we have also set up a dedicated telephone line for Phaeton owners. Our Luxury Car Support Centre is open six days a week, and is a single point of contact for Phaeton owners.

## Comprehensive cover from Volkswagen Roadside Assistance.

Your Phaeton is covered by the excellent support service of Volkswagen Roadside Assistance for the first three years after registration. This is a 24 hour, 365 days a year pan-European emergency home and roadside recovery service manned by professional multilingual staff. It's not just there for the unlikely event of a breakdown, Volkswagen Roadside Assistance can ease the uncertainty following an accident or the inconvenience should you run out of fuel or lose your keys. You will benefit from a priority response following your call to our dedicated team of support staff.

Volkswagen Roadside Assistance provides many benefits and complete peace of mind. For example, should you be in the unfortunate situation of a breakdown, we'll arrange overnight accommodation or onward travel for you and your passengers. In addition, there's an Accident and Legal Helpline.

Terms and conditions apply. Please see your authorised Volkswagen retailer for details and brochure.





The Phaeton.  
Ageless, timeless classic.



Model shown is 3.0 litre V6 TDI 245 PS 4MOTION LWB with optional Adaptive Cruise Control (ACC) and 18" 'Experience' alloy wheels.

# VOLKSWAGEN SERVICE.

**The Volkswagen Warranty. Three-year Warranty.** All Volkswagen passenger cars come with a three-year/60,000 miles warranty, which protects your car against the failure of most technical and electrical components due to manufacturing defects. This comprises a two-year manufacturer's warranty with unlimited mileage plus a further one-year/60,000 miles (whichever is soonest) Retailer Warranty<sup>1</sup>. Should the mileage exceed 60,000 miles within the first two years, the manufacturer's two-year warranty will still be valid. Full details of the three-year warranty are available from your authorised Volkswagen retailer or repairer.

**Body Protection Warranty.** The internal body sections and panels of the Phaeton are covered against rusting through from the inside for 12 years. Naturally, the vehicle must be cared for in compliance with the operating instructions. Please consult your authorised Volkswagen retailer or repairer for full warranty details.

**Three-year Paintwork Warranty.** This latest warranty, pioneered by Volkswagen, really provides you with the widest possible cover on a new car. There are no special conditions attached and paintwork manufacturing defects will be rectified without charge. Naturally, during the warranty period the car must be cared for in compliance with the operating instructions.

**Approved Accessories.** A comprehensive range of accessories from alloy wheels to carpet mats is available to complement the factory-fitted option list. Volkswagen approved accessories purchased from and fitted by your authorised Volkswagen retailer at the point of vehicle sale will also benefit from the three-year vehicle warranty.

**Extended Warranty.** If you order the Volkswagen Extended Warranty as an option when buying your new Phaeton then you get the 100% Volkswagen Warranty and you can continue to enjoy comprehensive Volkswagen protection against many unforeseeable repair costs. Designed to your needs, you can purchase an extra one or two year's warranty up to a maximum of five years or 90,000 miles.

**Service Intervals.** Volkswagen is pleased to offer you a choice on how your Volkswagen is serviced. The appropriate selection is entirely dependent on how the car is likely to be driven and its general use. To help you identify which type of service would be most suitable, please refer to the following guide.

The Fixed Service is recommended for vehicles that will cover less than 10,000 miles in 12 months and if the vehicle is likely to be used in the following way:

- Predominantly urban driving, short journeys with frequent cold starts.
- Activities regularly producing high engine loading, e.g. frequent hill climbs, driving with vehicle fully loaded and towing.
- Uneconomical driving style using high rpms with heavy acceleration and heavy braking.

The service intervals for the Fixed Service are as follows:

- Oil change service – After 1 year or 10,000 miles (15,000km), whichever is soonest.
- Inspection service<sup>2</sup> – First after 2 years or 20,000 miles (30,000km), then every one year or 20,000 miles (30,000km), whichever is soonest.

The Flexible Service is recommended for vehicles with daily mileage of more than 25 miles where the vehicle is driven regularly mainly on longer distance journeys. The vehicle is driven mainly at a constant speed with minimum vehicle and engine loading, minimal towing and driven in an economical manner. With the Flexible Service the vehicle can cover anywhere between 10,000<sup>3</sup> and a maximum of 20,000<sup>3</sup> miles or 24 months (whichever is soonest) between oil changes.

The service intervals for the Flexible Service are as follows:

- Oil change service – According to flexible service interval display (after 2 years at the latest).
- Inspection service<sup>2</sup> – First after 2 years or 20,000 miles (30,000km), then every one year or 20,000 miles (30,000km), whichever is soonest.

The up! model is only available with the Fixed Service schedule. Please consult your authorised Volkswagen retailer or repairer for advice and full details.

Please note: If you purchase a Volkswagen Fixed Price Service Plan your vehicle will follow the Fixed Service schedule.

**Volkswagen Insurance<sup>4</sup>.** We want you to start enjoying your new car from day one and thanks to Volkswagen Insurance complimentary seven day cover, you can. Call free on 0800 316 7892 (lines are open Monday to Friday 8am – 9pm and Saturday 9am – 5pm), provide a few details and a cover note will be sent to your retailer. They will then tax your car and you can drive it away.

**Volkswagen Insurance<sup>5</sup>.** Get three years' Volkswagen Insurance cover for free.

Another great benefit of being a Volkswagen driver. If your Volkswagen was damaged in an accident, wouldn't you want it fixed by a Volkswagen trained technician using only genuine Volkswagen parts? Insurance is Volkswagen's accident and repair cover which does exactly that. It works alongside your main comprehensive motor insurance policy no matter who you are insured with, to make sure you get the quality repair and service you would want. If you're involved in an accident or your car is stolen, just one call to us and we'll look after your claim from start to finish ensuring your Volkswagen is restored to the highest standard.

Activate your cover and benefit from:

- A guarantee that your Volkswagen will be repaired in a Volkswagen Insurance approved repairer, by Volkswagen trained technicians, using only genuine Volkswagen parts and paints.
- A dedicated Claims Manager will manage your claim from start to finish, liaising with your insurer and the repairer so you don't have to.
- Help to recover any uninsured losses using our Legal Expenses Cover.
- Online claims tracking so you can keep up to date with the status of any claim.

Volkswagen Insurance is free to all Volkswagen customers for three years and it only takes a minute to get cover. To find out more and to activate your cover, visit [volkswagen-insurance.co.uk](http://volkswagen-insurance.co.uk)

**Volkswagen Finance<sup>6</sup>.** Volkswagen Finance specialises in providing funding solutions for Volkswagen drivers. Whether your Volkswagen is for private or business use, you can choose from a range of funding options.

- Solutions – a personal contract plan
- Hire purchase
- Lease purchase
- Finance lease
- Contract hire

With all Volkswagen Finance products you can choose a fixed-cost maintenance plan to help you budget for your servicing and maintenance costs. No matter what finance product you choose, your local Volkswagen retailer will be able to provide you with a personalised quote that could meet your budget and vehicle needs.

**CO<sub>2</sub> Emissions.** Increased weight of a vehicle, including higher trim levels and the addition of options will have a detrimental influence on the level of fuel consumption and CO<sub>2</sub> emissions produced.

The CO<sub>2</sub> and fuel consumption figures are obtained from tests on a representative vehicle of the type, conducted and approved in accordance with Council Directive 80/1268/EEC as amended by Directive 1999/100/EC (or later) on the approximation of the laws of the member states relating to the carbon dioxide emissions and the fuel consumption of motor vehicles.

**Volkswagen Roadside Assistance.** Every new car is registered for Volkswagen Roadside Assistance for one year except the Touareg and Phaeton which are registered for three years. This provides vehicle roadside and home recovery in the unlikely event of a breakdown in the UK and Europe (subject to conditions). Volkswagen Roadside Assistance can also be purchased for subsequent years. For full details, please contact your authorised Volkswagen retailer.

**Tax Free Sales.** For full details, please contact your authorised Volkswagen retailer.

**Please Note.** Some illustrations in this brochure do not necessarily reflect UK specifications and may not be available. In particular, controls and some items of equipment are positioned differently for the UK.

The specifications contained in this brochure are for information purposes only and are subject to change. If you require any specific feature, you must consult your authorised Volkswagen retailer who is regularly updated with any change in specification. Please check model availability and full specification details with your authorised Volkswagen retailer prior to ordering.

Note: we would like to advise you that telephone calls to the Luxury Car Support Centre may be monitored and recorded as part of our training and quality assurance processes. All our monitoring and recording processes meet Ofcom regulations.

<sup>1</sup> All warranty work must be completed by an authorised Volkswagen retailer or repairer.

<sup>2</sup> The inspection service first at 3 years (or 40,000 miles) and then every second year (or 40,000 miles) has additional workscope.

<sup>3</sup> The quoted mileage is based on a conversion from kilometres and is therefore unlikely to exceed circa 18,000 miles between oil changes.

<sup>4</sup> Volkswagen Insurance is a trading name of Volkswagen Insurance Service (Great Britain) Limited, an appointed representative of Volkswagen Financial Services (UK) Limited, Brunswick Court, Yeomans Drive, Blakelands, Milton Keynes MK14 5LR. Registered in England number 2835230. Volkswagen Insurance is sold, underwritten and administered by Allianz Insurance plc registered in England number 84638. Registered office 57 Ladymead, Guildford, Surrey GU1 1DB. Volkswagen Financial Services (UK) Limited and Allianz Insurance plc are authorised and regulated by the Financial Services Authority. Volkswagen Financial Services (UK) Limited and Allianz Insurance plc are not part of the same corporate group.

<sup>5</sup> Insurance from Volkswagen Insurance is sold and administered by Lawshield UK Limited, registered in England number: 3360532 (registered office: Lawshield House, 850 Ibis Court, Lakeside Drive, Centre Park, Warrington, Cheshire WA1 1RL) and underwritten by UK General Insurance Limited on behalf of Ageas Insurance Limited, registered in England number: 354568 (registered office: Ageas House, Tollgate, Eastleigh, Hampshire SO53 3YA).

<sup>6</sup> Finance is available to 18s and over, subject to status. Terms and conditions apply. Volkswagen Finance.

PVW52PHAA. Printed in England

Issue: 1 December 2014

Telephone: 0800 032 2278

Internet: [www.volkswagen.co.uk](http://www.volkswagen.co.uk)

The illustrations in this brochure do not necessarily reflect UK specifications and some items of equipment may not be available for the UK. The specifications contained in this brochure are for information purposes only as we cannot confirm the exact specifications of the vehicles. 4MOTION is a registered trademark of Volkswagen AG.



[facebook.com/VolkswagenUK](https://facebook.com/VolkswagenUK)



[@UKVolkswagen](https://twitter.com/@UKVolkswagen)



[youtube.com/UKVolkswagen](https://youtube.com/UKVolkswagen)