

Genuine Accessories

for CLA-Class Shooting Brake and Coupé.



Mercedes-Benz





TELEMATICS	04-11
EXTERIOR	12-21
MERCEDES-BENZ SPORT EQUIPMENT	22-27
INTERIOR	28-35
CARGO & CARE	36-43
AMG	44-47
INDEX	52-55





02

01	Garmin® MAP PILOT	06
02	COMAND Online	07

Excellent networking.

Audio 20 CD | not pictured

Twin-tuner radio with colour TFT display. Bluetooth® interface with hands-free function and audio streaming. CD changer is MP3-compatible. Available with 14.7 cm display¹⁾ and 17.8 cm display.²⁾

01 Garmin® MAP PILOT

Transforms your Audio 20 radio into a high-performance navigation system with 3D map views. Garmin® MAP PILOT uses the standard-fit 17.8 cm colour TFT display and can be conveniently operated via the vehicle's Controller and the Audio 20 keypad. Available for a whole range of countries. For details and the latest updates, visit the Mercedes-Benz Shop at shop.mercedes-benz.com.

02 Becker® MAP PILOT

Transforms your Audio 20 radio into a high-performance navigation system with 3D map views. Becker® MAP PILOT uses the standard-fit 14.7 cm colour TFT display and is conveniently operated via the Audio 20 keypad. The plug-in navigation module can be connected to your PC via USB to download the latest updates and additional services from the Becker® MAP PILOT website. Available in Europe, the USA, China, Australia/New Zealand and Russia.

Only available for the Coupé.

03 Europe navigation update for

COMAND Online and Garmin® MAP PILOT

Did you know that we update 20% of the information on our navigation media every year? Changes include new roads and junctions, altered priorities, new points of interest such as filling stations and restaurants and additional countries, above all in Eastern Europe.

04 SD memory card

The COMAND Online system in your vehicle features a slot for SD memory cards. Play music directly from the SD memory card or upload it to your COMAND system's hard drive.





For further information about Mercedes-Benz Apps, go to apps.mercedes-benz.com

05 COMAND Online with 6-disc DVD changer

Fully integrated high-end multimedia system with 6-disc DVD changer, hard-drive navigation system, internet browser, telephony plus DVD video and Music Register, shown on high-resolution colour TFT display. Can be operated conveniently and safely via your vehicle's control instruments.

- Fast hard-disc navigation with 3D map views, Speed Limit Assist and automatic congestion avoidance (TMC Pro).
- High-speed internet access via your vehicle's aerial or your mobile phone's WLAN hotspot function²⁾ with free use of Mercedes-Benz internet services such as Weather, Google™ route download, etc.
- Write and read-aloud function for text messages and email.
- 10 GB Music Register for a range of audio and video formats (MP3, WMA, AAC, MPEG, AVI up to 720p) plus USB interface.
- Bluetooth® interface with hands-free function and audio streaming for music. Slot for SD memory cards.
- DVD video with Cover Flow display.
- LINGUATRONIC voice control system for audio, telephone, navigation and music search.
- Digital, animated Owner's Manual.
- Supports Mercedes-Benz Apps.
- Navitainment functions.

Available with 17.8 cm display¹⁾ and 20.3 cm display²⁾. Available with or without DVD changer.

06 Mercedes-Benz Apps

Take advantage of Mercedes-Benz Apps for COMAND Online and Audio 20 CD³⁾:



News: access to news from around the world, in categories such as finance, politics and technology.



Parking Finder: search for parking options near your current position or destination, with details of free parking, parking charges and opening hours.



Morningstar Finance: receive details of indexes and share prices from funds rating agency Morningstar. Please note that market details are not delivered in real time.



Fuel Prices: shows the current fuel prices at filling stations in your vicinity and transfers the selected address to your navigation system.

For details of Mercedes-Benz Apps and their availability in your country, go to <http://apps.mercedes-benz.com>

Please ask your Mercedes-Benz partner whether your mobile phone is suitable for use with COMAND Online. The Mercedes-Benz Bluetooth® (SAP) telephone module with integral UMTS module and a direct connection to the vehicle aerial ensures that COMAND Online has a fast, stable and secure internet connection.

1) Available for the Coupé up to model year 12/2014. Please ask your authorised Mercedes-Benz partner about installability.

2) Available for the Shooting Brake and the Coupé from model year 01/2015. Please ask your authorised Mercedes-Benz partner about installability.

3) Audio 20 only supported from model year 12/2014. Not available for Audio 20 USB.



For further information, go to <http://drive-kit-plus.com>



Social: feeds and tweets from your friends can be read aloud while you're on the move.⁴⁾



Media: select your favourite music from your smartphone via Cover Flow.



Places: search for points of interest via Google™ and transfer them directly to your navigation system.

01 Mercedes-Benz Drive Kit Plus for the iPhone®

The “Drive Kit Plus for the iPhone®” comprehensively integrates your iPhone® 6/6 plus/5/5s/5c/4/4s on board. Integration is based on the combination of the Mercedes-Benz “Digital DriveStyle” app and the “Drive Kit Plus for the iPhone®” – the on-board interface to which the iPhone® is connected and via which it is charged. The “Digital DriveStyle” app is available free of charge from the iTunes® App Store¹⁾. The app features an extensive range of functions, seamlessly integrated into the new, revolutionary user interface which appears on the vehicle display²⁾. When an iPhone® is connected, the “Digital DriveStyle” app can be operated safely and conveniently using the ergonomic Controller.

Some functions of the “Digital DriveStyle” app:

- Advanced navigation solution from Garmin®, with internet-based real-time traffic information, point of interest search and 3D map views.
- Local search for points of interest powered by Google™ – with Street View™ and transfer of destination to the navigation system.
- Google Places™: search for points of interest (POIs) is internet-based, which means the latest information is available.
- Google™ Traffic: overview of current traffic situation via Google Maps™.
- Siri™³⁾ can act as a personal assistant, providing answers to questions or carrying out commands which would otherwise require manual input.
- AUPEO! Personal Radio for an individual music programme.
- Internet radio from national and international broadcasters.

- Access to songs saved on your iPhone®.
- Facebook® feeds and Twitter® tweets from friends are read aloud⁴⁾.
- Socially interactive experience with option, for example, of sharing and posting current song choice or navigation destination on Facebook® and Twitter®.
- Glympse™: share your location, vehicle speed and estimated time of arrival with your friends in real time.
- Intuitive CarFinder – automatically stores vehicle’s location in iPhone®. Integral pedestrian navigation on the iPhone® makes it easy to find your vehicle again.

Available for the Coupé up to model year 12/2014. Please ask your authorised Mercedes-Benz partner about installability.

1) “Digital DriveStyle” app available in iTunes® App Store in Germany, France, Italy, Switzerland, Austria, the UK, Luxembourg, the Netherlands, Belgium, Spain, Portugal, Denmark, Norway, Sweden, Finland, the Czech Republic, Slovenia, the Slovak Republic, Hungary, Greece, Serbia and Montenegro. Other countries to follow.

2) Only in conjunction with Audio 20 CD.

3) Audio support only. You can find a list of Siri™ commands at <http://drive-kit-plus.com>

4) Languages: German, English, Italian, French, Spanish, Dutch, Danish, Swedish, Norwegian, Finnish, Portuguese.



01 Reversing camera

The reversing camera is automatically activated when reverse gear is engaged. It assists the driver when reversing into a parking space. Static and dynamic guide lines show the driver the steering angle and the available clearance.

Only available for the Coupé.



02 Mercedes-Benz Bluetooth® (SAP¹⁾) telephone module²⁾

Experience a new dimension of web access, telephony and navigation support with the combination of the Mercedes-Benz Bluetooth® (SAP¹⁾)²⁾ telephone module and your COMAND Online multimedia system. You can simultaneously talk on the phone, use Mercedes-Benz Apps and have your text messages read aloud. The telephone module ensures that COMAND Online has a fast, stable and reliable internet connection via the integral UMTS module and the direct link to the vehicle's external aerial. The module is compatible with all COMAND systems from NTG4.5. From NTG5 you even have access to high-speed internet: the data transfer speed via the USB cable is up to 7x faster than a Bluetooth® connection! The telephone module can be used as a permanently installed telephone and as a data modem. The module's gateway functionality allows parallel phone use – with all the functions of Convenience Telephony (Code 386): convenient operation via your multimedia system, hands-free functionality using the personal contact details on your mobile's SIM card and much more besides. If required, your mobile is also charged via the USB port. The Bluetooth® (SAP) telephone module can either use your mobile's SIM card or a SIM card can be inserted directly into the module, for a connection that is independent of your mobile phone. Many mobile phone providers offer multi SIM cards for your existing contract.



03



04

03 Mobile-phone holders

When it comes to selecting a mobile phone for your Mercedes-Benz, you've never had so much choice. One "click" is all it takes to replace the mobile-phone holder. It takes a matter of seconds and is as straightforward as inserting the mobile into the holder itself. Changing your mobile and even alternating between different models of mobile no longer presents a problem. Enjoy the benefits of Convenience Telephony to the full.

Other advantages:

- Optimum reception quality as a result of using vehicle's external aerial.
- Mobile's battery is charged.
- Access to internal phone memory.
- Convenient operation using multifunction steering wheel.

Only in conjunction with Convenience Telephony (Code 386).

Holders are available for a range of popular mobiles, for example:

Nokia:	6303, 6303i classic
Apple®:	iPhone® 4s, iPhone® 4
Samsung:	Galaxy S3
BlackBerry:	9790 Bold, 9900 Bold, 9780 Bold, 9700 Bold

1) SAP (SIM Access Profile) allows the module to read your mobile phone's SIM card.

2) Only in conjunction with Convenience Telephony (Code 386).

04 Media Interface Performance Cable

Control your iPod®, your iPhone® or other devices with a micro USB connection via the multifunction steering wheel or your audio system. Display the song, artist or album/playlist of your choice in the instrument cluster or on the monitor of your audio system. And charge your device's battery – via the universal interface in the centre console.



For further information about using the phone while in your vehicle, go to www.mercedes-benz.com/connect or contact your Mercedes-Benz partner.





01 45.7 cm (18")
5-twin-spoke wheel



Highly effective.

- 01 5-twin-spoke wheel**
Finish: black, red rim flange
Wheel: 7.5 J x 18 ET 52 | Tyre: 225/40 R 18 XL
A246 401 0600 9Y23
- 02 5-twin-spoke wheel**
Finish: black, high-sheen rim flange
Wheel: 7.5 J x 18 ET 52 | Tyre: 225/40 R 18 XL
A246 401 0600 7X72
- 03 5-twin-spoke wheel**
Finish: black, high-sheen
Wheel: 7.5 J x 18 ET 52 | Tyre: 225/40 R 18 XL
A246 401 0600 7X23
- Option for rear axle:
Wheel: 8 J x 18 ET 50.5 | Tyre: 245/35 R 18 XL
A246 401 1000 7X23
- 04 5-triple-spoke wheel**
Finish: tremolite metallic, high-sheen
Wheel: 7.5 J x 18 ET 52 | Tyre: 225/40 R 18 XL
A246 401 2202 7X44
- 05 5-triple-spoke wheel**
Finish: black, high-sheen
Wheel: 7.5 J x 18 ET 52 | Tyre: 225/40 R 18 XL
A246 401 2202 7X23

Light-alloy wheels are supplied without tyres, wheel bolts, valve caps or hub caps.



02 | 45.7 cm | 18"



03 | 45.7 cm | 18"



04 | 45.7 cm | 18"



05 | 45.7 cm | 18"



01 | 45.7 cm | 18"



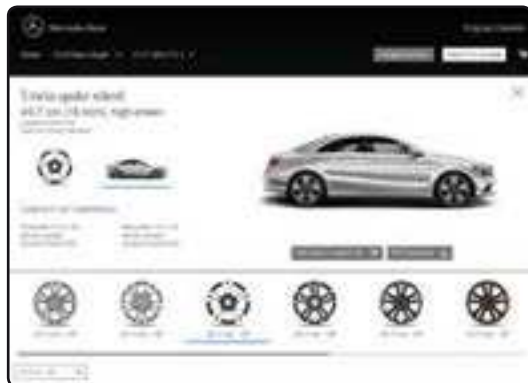
03 | 45.7 cm | 18"



02 | 45.7 cm | 18"



04 | 45.7 cm | 18"



Choose your favourite wheels online. Our Accessories Configurator shows you at a click of the mouse how the various Mercedes-Benz light-alloy wheels will look on your vehicle. Visit our website at mercedes-benz-accessories.com

01 5-triple-spoke wheel

Finish: tremolite metallic

Wheel: 7.5 J x 18 ET 52 | Tyre: 225/40 R 18 XL

A246 401 2002 7X28

02 5-twin-spoke wheel

Finish: black, high-sheen

Wheel: 7.5 J x 18 ET 52 | Tyre: 225/40 R 18 XL

A246 401 0402 7X23

03 5-twin-spoke wheel

Finish: himalaya grey, high-sheen

Wheel: 7.5 J x 18 ET 52 | Tyre: 225/40 R 18 XL

A246 401 0400 7X21

04 5-twin-spoke wheel

Finish: himalaya grey

Wheel: 7.5 J x 18 ET 52 | Tyre: 225/40 R 18 XL

A246 401 0400 7756

05 5-spoke wheel

Finish: titanium silver

Wheel: 7.5 J x 17 ET 52.5 | Tyre: 225/45 R 17

A246 401 0502 9765

06 5-twin-spoke wheel

Finish: titanium silver

Wheel: 7.5 J x 17 ET 52.5 | Tyre: 225/45 R 17

A246 401 0002 9765

Wheel: 6.5 J x 17 ET 49 | Tyre: 205/50 R 17

A246 401 0102 9765

07 5-Y-spoke wheel

Finish: titanium silver

Wheel: 7.5 J x 17 ET 52.5 | Tyre: 225/45 R 17

A246 401 1402 9765



05 | 43.2 cm | 17"



06 | 43.2 cm | 17"



07 | 43.2 cm | 17"

QUALITY



The long road to perfection.

Mercedes-Benz light-alloy wheels not only boost your vehicle's looks, they also offer the ultimate in safety.

All wheels are precision-tailored to your vehicle in terms of load profile and dimensions. Before your light-alloy wheels are allowed to accompany you safely on your travels, they are subjected to an extensive development and testing programme. Each wheel design has to pass a variety of endurance tests, based on exacting Mercedes-Benz guidelines, all of which exceed statutory requirements. These include special test routines which simulate real challenges on the road and material tests in cutting-edge x-ray facilities.

High-sheen wheels undergo additional tests such as exposure to highly corrosive salt spray or a 28-day variable climate programme. Only once all of the tests have been passed may the wheels be included in the range of genuine Mercedes-Benz light-alloy wheels. Add an individual touch to your vehicle with tested and approved genuine Mercedes-Benz light-alloy wheels and head for the open road.



01 | 43.2 cm | 17"



02 | 43.2 cm | 17"

01 5-spoke wheel

Finish: tremolite metallic, high-sheen

Wheel: 7.5 J x 17 ET 52.5 | Tyre: 225/45 R 17

A246 401 1902 7X44

02 5-twin-spoke wheel

Finish: titanium silver

Wheel: 7.5 J x 17 ET 52.5 | Tyre: 225/45 R 17

A246 401 0100 9765



03 | 43.2 cm | 17"



05 | 43.2 cm | 17"



07 | 43.2 cm | 17"



04 | 43.2 cm | 17"



06 | 43.2 cm | 17"



08 | 43.2 cm | 17"

03 7-twin-spoke wheel

Finish: titanium silver

Wheel: 7.5 J x 17 ET 52.5 | Tyre: 225/45 R 17

A246 401 0602 9765

05 5-spoke wheel

Finish: titanium silver

Wheel: 7.5 J x 17 ET 52.5 | Tyre: 225/45 R 17

A246 401 0300 9765

07 5-twin-spoke wheel

Finish: himalaya grey, high-sheen

Wheel: 7.5 J x 17 ET 52.5 | Tyre: 225/45 R 17

A246 401 0302 7X21

04 5-twin-spoke wheel

Finish: tremolite metallic

Wheel: 7.5 J x 17 ET 52.5 | Tyre: 225/45 R 17

A246 401 1002 7X28

06 5-twin-spoke wheel

Finish: himalaya grey, high-sheen

Wheel: 7.5 J x 17 ET 52.5 | Tyre: 225/45 R 17

A246 401 1502 7X21

08 5-twin-spoke wheel

Finish: vanadium silver

Wheel: 7.5 J x 17 ET 52.5 | Tyre: 225/45 R 17

A246 401 0800 7X45



01 5-twin-spoke wheel

Finish: black

Wheel: 6.5 J x 16 ET 49 | Tyre: 205/55 R 16

A246 401 0000 7X43

02 5-twin-spoke wheel

Finish: matt black, high-sheen

Wheel: 6.5 J x 16 ET 49 | Tyre: 205/55 R 16

A246 401 0000 7X36

03 10-spoke wheel

Finish: titanium silver

Wheel: 6.5 J x 16 ET 49 | Tyre: 205/55 R 16

A246 401 0500 9765

04 7-spoke wheel

Finish: matt black, high-sheen

Wheel: 6.5 J x 16 ET 49 | Tyre: 205/55 R 16

A246 401 1702 7X36

05 5-twin-spoke wheel

Finish: champion silver

Wheel: 6.5 J x 16 ET 49 | Tyre: 205/55 R 16

A246 401 1302 9782

Hub caps

Protect the hub from dirt. Available in the following versions:

06 classic roadster design in black

07 classic roadster design in blue

08 himalaya grey with chrome star

09 titanium silver with chrome star

10 black with chrome star

11 matt black with chrome star

12 Mud flaps

Protect the underbody and the sides of the vehicle from loose chippings and dirt.

Available in pairs for front or rear axle. Black.



06



08



10



07



09



11



12 13

13 Snow chains

High-performance chain for the toughest of conditions and excellent traction on snow and ice. Easy to fit – fastens on outside.

14 Valve caps, black

Stylish highlights in a new design. Protect the valves from dirt. Set of 4.

15 Tyre pressure gauge

Allows you to carry out a quick tyre pressure check on the road or at home. Keeping tyres at the optimum pressure saves fuel and reduces tyre wear. Suitable for all motor vehicle tyre valves and for cycle valves. Supplied with leather pouch.

16 Rim locks, silver

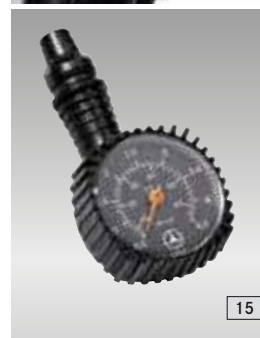
Protect your valuable light-alloy wheels from theft. Set consisting of coded key and one lock per wheel.

17 Rim locks, black

Protect your valuable light-alloy wheels from theft. Set consisting of coded key and one lock per wheel.



14



15



16



17



01

03

02

04



01	High-gloss black exterior mirror housing	24
02	SPORT badge	26
03	Night styling package	24
04	45.7 cm (18") 5-twin-spoke wheel	27
05	Rear spoiler	24



Electrifying looks.

01 Night styling package

Adds a charismatic touch to your CLA.

Consisting of black side trim strips and black window surrounds.

Only available for the Coupé.

02 High-gloss black exterior mirror housings

For an individual, sporty and dynamic look. Set of 2.

Exterior mirror cover, Carbon-Style

| pictured on p. 26

For an individual, sporty and dynamic look. Set of 2.

Only available for the Coupé.

Front apron spoiler lip, Carbon-Style

| pictured on p. 26

Underlines the car's individual looks.

In realistic Carbon-Style with dynamic 3D effect. No entry in vehicle documents required.

Only available for the Coupé.

03 Rear spoiler

Discreet spoiler, fitted to the boot lid, subtly accentuating the rear contours of the Coupé.

A high-quality primed finish allows the product to be painted in the required colour. Highly durable thanks to precision-fit, dimensionally stable polyurethane. Straightforward fitting – no need for additional drilling. No entry in vehicle documents required.

Only available for the Coupé.

04 Illuminated Mercedes star

Let your star shine. Thanks to fibre-optic cables and LED technology, the central star emblem in your Mercedes' radiator grille lights up when you remotely lock/unlock the vehicle or open the door or tailgate. Only functions when engine is switched off. Not in conjunction with DISTRONIC (Code 239). For models with central star emblem.





01 Sport badge

High-quality high-shine badge for the wing.

02 Brake system kit, red

Eye-catching looks and impressive performance to further emphasise your sporty appearance. The single-piston brake calliper is painted red and branded with a Mercedes-Benz badge. Available in conjunction with perforated, internally ventilated brake discs (to be ordered separately if necessary), the kit optimises system cooling and improves response in the wet.

Only available for the Coupé. Please ask your authorised Mercedes-Benz partner about installability.



03 "Road" & "Track" decal kits

Both decal kits (Road & Track) lend your CLA-Class a sporty look and underline its expressive design. The multi-piece "Road" decal kit for bonnet, roof and sides of vehicle with "chequered flag" design is motorsport-themed and can be combined with the "Track" decal kit with start number 1 and sun visor strip for racing use.

Only available for the Coupé. Not available for CLA 45 AMG and models with panoramic sliding sunroof (Code 413).



04 | 45.7 cm | 18"

04 5-twin-spoke wheel

Finish: matt black, high-sheen

Wheel: 7,5 J x 18 ET 52

Tyre: 225/40 R 18 XL

A246 401 2102 7X36



05

06

05 Sports pedals in stainless steel

High-sheen stainless steel pedals with non-slip stud panel. Available for vehicles with automatic transmission and manual transmission.

06 SPORTY velour floor mat

A high-quality, sporty look. Black with red topstitching and Sport badge at front edge.

07 Door sill panel

A genuine highlight: these high-quality stainless steel door sill panels feature lettering which lights up when you get in or out of the vehicle.

07

01

Mercedes-Benz

A close-up photograph of a car's interior floor area. The main focus is a dark, textured velour floor mat with a circular Mercedes-Benz logo embossed in the center. To the left, a portion of a door sill panel is visible, featuring the word "Mercedes" in a light-colored font. A small white box with the number "02" is positioned on the floor mat. The lighting is dramatic, highlighting the textures of the materials.

Mercedes

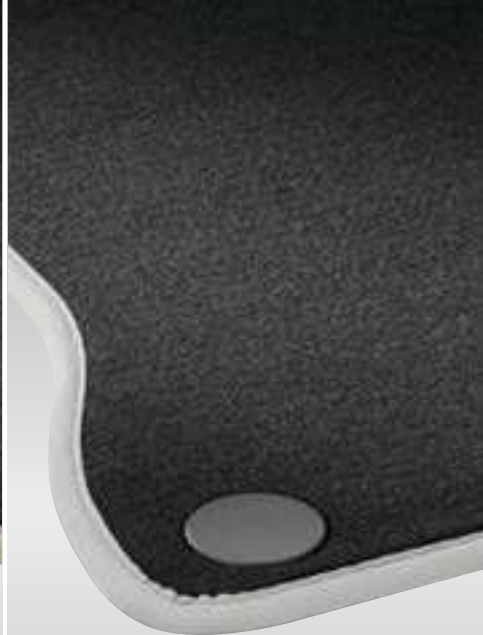
02

01 Illuminated door sill panel
02 CLASSIC velour floor mat

32
31



sahara beige 01



crystal grey 01



black 01



black 02



black 03

Strong resistance.

Mercedes-Benz floor mats

Floor mats have to undergo rigorous testing before they are deemed worthy of the star logo: durability, fade-resistant colour and a neutral odour, even after three winters of use, are all specifications which must be met without compromise. The mats are precision-tailored to your Mercedes-Benz using the vehicle's original CAD data. Can be clip-fastened to the floor to prevent slipping.

01 CLASSIC velour floor mat (set of 4)

Elegant, high-quality tufted velour mats, with embroidered Mercedes-Benz lettering. Available in various colours to match your interior.

02 CLASSIC rep floor mat (set of 2)

Durable, extremely hardwearing needle felt mats, with embroidered Mercedes-Benz lettering. Available in black.

03 CLASSIC all-season floor mat (set of 2)

Made from robust, washable synthetic material for heavy use. Contemporary design with recessed areas and raised edge. With distinctive Mercedes star logo. Available in black.

QUALITY



Made to last.

Floor mats from Mercedes-Benz offer quality you can rely on. Every floor mat has to earn its star logo before it is allowed to keep your vehicle clean and dry. The mats undergo the toughest endurance and scuffing tests and have to demonstrate their resistance to sunlight, dirt and weight loading, emerging with their outstanding quality undiminished.

Inside your vehicle you can check the quality of Mercedes-Benz floor mats for yourself. They are precision-tailored to the dimensions of the footwell, clip-fastened to the floor of the vehicle to prevent slipping and absolutely dimensionally stable, thanks to their special layered format. Your floor mats are made to cope with any demand you place on them.



01 Multipurpose holder

Divides the open stowage compartment in your centre console into two equal sections. Provides a safe hold for cans or other drinks containers. Also ideal for parking tickets, plastic cards and coins. In high-quality plastic with chrome trim.

Drinks holder | not pictured

Holds cans, cups and small bottles within easy reach. Flexible arms provide a secure hold. Two compartments for different-sized containers. The high-quality plastic wipes clean and is dishwasher safe.



02 Illuminated door sill panels

A distinctive, eye-catching accessory, whether in daylight or at night – thanks to brightly illuminated Mercedes-Benz lettering, set in an elegant ground stainless steel panel.

03-06 Style & Travel Equipment

These head restraint elements are simple to fit and remove. The modular system centres around a base support [03] which can be combined with the product of your choice - universal hook [04], folding table [05] or coat hanger [06].

Only for models with head restraint posts. Not for models with Code 864 (Rear Seat Entertainment System).



03



04



05



06



01

Mercedes-Benz child safety

Your vehicle features automatic front passenger airbag deactivation with seat occupancy recognition (optional extra Code U10). The front passenger airbag is automatically deactivated when a child seat is fitted to the front passenger seat. All child seats can also be used without the ISOFIX attachment system. Mercedes-Benz child seats are available in the “Limited Black” design.

The covers are washable and very hardwearing. Optional replacement headrest covers are available for the “BABY-SAFE plus II”, “DUO plus” and “KIDFIX” child seats in flannel grey and chilli red [pictures 06 and 07].

01 Lateral support headrest for integral child seat

Supports your child’s head and shoulders and enhances comfort, particularly for a sleeping child. Ensures optimum seat belt routing in conjunction with the integral child seat. For children between the ages of around 2 and 12 (12.5 to 36 kg). Cannot be used in conjunction with integral child seat covering.

Only available for the Shooting Brake.

02 Integral child seat padded play table

Padded play table which transforms the integral child seat into a secure restraint system. For children between the ages of around two to four years (body weight 12.5 to 18 kg).

Integral child seat protective covering | not pictured
Hardwearing protective covering. Padded sides transform the integral child seat into a fully fledged child seat. For children up to the age of 12 (36 kg). Colour: side sections anthracite, centre sections grey with DaimlerSquare pattern.

03 “BABY-SAFE plus II” child seat

Deep, moulded seat design offers extra side-impact protection for optimum safety. Special padding, designed to protect particularly vulnerable body areas of children up to around 15 months (up to 13 kg).

04 “DUO plus” child seat

Optimum safety for children between the ages of around 8 months and 4 years (9 to 18 kg). Fitted as standard with top tether, an additional belt for securing the head section, a height-adjustable harness, ventilation channels and ISOFIX attachment points. Adjustable tilt.

05 “KIDFIX” child seat

Booster seat for optimum side-impact protection, with height-adjustable backrest. The “KIDFIX” seat is secured using the 3-point seat belt and ISOFIX attachment points. For children between the ages of around 3.5 and 12 (15 to 36 kg).

06–07 Headrest covers

Available for the “BABY-SAFE plus II”, “DUO plus” and “KIDFIX” child seats in flannel grey [06] and chilli red [07].



02



 up to
15 months

 up to 13 kg

03



 8 months to
4 years

 9 to 18 kg

04



 3½ to
12 years

 15 to 36 kg

05



06



07



01

02



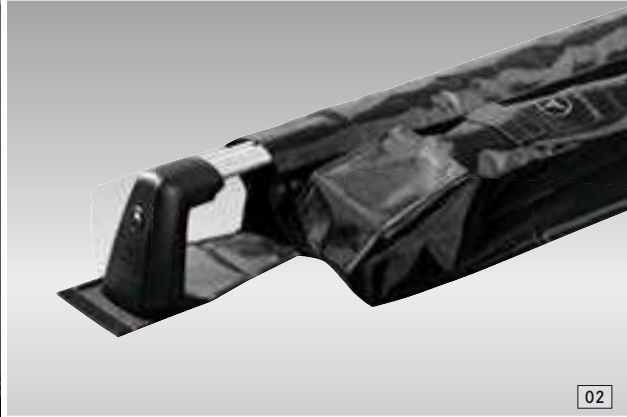
01 Mercedes-Benz roof box 400	39
02 Alustyle Quickfix basic carrier bars	39



01



01



02



50 kg¹⁾

75 kg¹⁾

75 kg¹⁾



Boxes open on both sides for convenient loading and unloading.

03 04 05



black metallic



matt silver



06

Efficient transporter.

01 Alustyle Quickfix basic carrier bars

Aluminium carrier bars, precision-tailored to the body of your Mercedes-Benz – the perfect basis for a range of Mercedes-Benz transport solutions: ski and snowboard rack, bicycle rack or roof boxes. Fitted in next to no time without the use of tools, thanks to new, innovative quick-release fasteners. Aerodynamic Mercedes-Benz design with optimised noise level. Crash-tested. Lockable.

02 Transport and stowage bag

Robust bag, made from high-quality nylon fabric. Protects your basic carrier bars when stowing or transporting them.

Mercedes-Benz roof boxes

Aerodynamic design, tailored to your Mercedes-Benz. Extremely durable material. Designed for quick, optimised fitting to your basic carrier bars or basic carrier bars for roof rails. Boxes open on both sides for particularly easy loading and unloading. Lockable on both sides.

03 Mercedes-Benz roof box 330

Capacity approx. 330 litres. Available in matt silver. Maximum payload 50 kg¹⁾.

04 Mercedes-Benz roof box 400

Capacity approx. 400 litres. Available in matt silver and black metallic. Maximum payload 75 kg¹⁾. Handle strip for easier opening and closing.

05 Mercedes-Benz roof box 450

Capacity approx. 450 litres. Available in matt silver and black metallic. Maximum payload 75 kg¹⁾. Handle strip for easier opening and closing.

06 Ski rack insert for Mercedes-Benz roof boxes

Insert for securing your skis – precision-tailored to the internal dimensions of the roof box.

Ski rack insert for roof box 330:

A secure hold for up to three pairs of skis²⁾.

Ski rack insert for roof box 400:

A secure hold for up to four pairs of skis²⁾.

Ski rack insert for roof box 450:

A secure hold for up to five pairs of skis²⁾.

1) Please bear in mind your vehicle's permissible roof load.

2) Subject to geometry of skis.



01 New Alustyle ski and snowboard rack "Comfort"

For up to 6 pairs of skis* or 4 snowboards. Lockable. Practical pull-out function [A] makes loading and unloading easier.

02 New Alustyle ski and snowboard rack "Standard"

For up to 4 pairs of skis* or 2 snowboards. Lockable.

* Subject to geometry of skis.

03 New Alustyle bicycle rack

Extremely lightweight bicycle rack, designed to be attached to the basic carrier bars. Cycles can either be attached to the rack once it has been fitted to the roof or before it is fitted. Support frame folds down when not in use to reduce drag when travelling without cycles. Suitable for cycles with a max. frame diameter of 98 mm (circular frame tubes) or 110 x 70 mm (oval frame tubes). Please bear in mind your vehicle's permissible roof load.



04

04 Rear-mounted bicycle rack for trailer coupling, folding

Easy-to use, lockable rear-mounted bicycle rack, designed to provide secure transport for 2 or 3 cycles. Rack is easy to attach to trailer coupling, and cycles are equally easy to fit to rack. Maximum payload of up to 30 kg per rail, making rack suitable for most ebikes. An ingenious roller mechanism means that the load compartment can still be opened. The rack is easy to fold for space-saving stowage in the load compartment, at your holiday accommodation or at home.



04



05



04

05 Trailer coupling

Mechanically folding trailer coupling, specially for Mercedes-Benz vehicles. High corrosion protection. Supplied with electrical kit and control unit. Max. drawbar load 75 kg.

06 Adapter for trailer

For trailer with 7-pin plug.



06



01 02



05



06



03



07



04



08 09

01 Shallow boot tub

Made from impact-resistant, non-slip polypropylene. Suitable for transporting food-stuffs. Structured surface holds separately available stowage crate in place. Vehicle's load-securing rings remain accessible.

02 Stowage crate

Secure hold for objects at risk of falling over or slipping, e.g. shopping bags. Adjustable partitioning elements allow crate to be divided into max. 4 sections. Optimum functionality only in conjunction with shallow boot tub.

03 Snap-in module for load compartment¹⁾

Partition your load compartment to suit your requirements and prevent the contents from sliding around. The brackets can be freely positioned along the outer edges of the load compartment floor. The system's telescopic frame provides a secure hold.

Factory-fitted pre-installation (Code 942) is not required.

04 Concertina load sill protector

Protects the rear of the vehicle from scratches when you're loading up – and prevents dirt from the vehicle from getting onto your clothes. Practical design allows product to be connected to reversible mat and load-securing rings.

05 Reversible mat

With one high-quality velour side and one non-slip side. Can be connected to concertina load sill protector.

06 Luggage net

Available for the floor of the boot and the load sill. Prevent lightweight objects from sliding around during your journey. The nets are in pocket format.

07 Tie-down strap

Adjustable strap with fastener – deal for securing items to the load-securing rings.

08 Shopping crate

Anthracite. Collapsible.

09 Luggage-securing feature

Ingenious solution to the problem of luggage sliding around in the load compartment. Attaches securely around the object in question thanks to Velcro fastening.

10 Coolbox

Not only cools but warms too. Cools to up to 20 °C below ambient temperature – to max. -2 °C. Can be switched to warming function. Robust, highly insulated hard case with fabric cover, outside pockets and padded shoulder strap. Capacity 24 litres. Can be connected to 12 V socket in vehicle or to 230 V power source via separately available rectifier.

11 Rectifier

Allows the coolbox to be connected to a 230 V socket at home.

12 Emergency spare wheel

The emergency spare wheel must be secured in place in the load compartment in an emergency spare wheel bag. Emergency spare wheel to comply with statutory requirements.

13 Emergency spare wheel bag

Emergency spare wheel bag, designed to secure the emergency spare wheel in place on the floor of the load compartment.

Vehicle tool kit | not pictured

Everything you need to change a wheel – from the wheel wrench to a pair of gloves. All handily stored in a compact bag.

14 Charger with trickle charge function

New life for your vehicle's battery: checks, charges and revives your battery – even if it's totally flat. Tailored to your vehicle's complex electronic systems. Available in a combination 5 A version for all types of lead-acid or lithium battery. Also available in a 25 A version for all types of lead-acid battery.

15 Compact fluorescent jacket

Optimum safety in every situation: this fluorescent yellow jacket with reflective stripes makes you more visible to others. Now rolled for compact stowage and supplied in an individual fabric bag. Suitable for the stowage compartments in the vehicle doors.



10 11



12 13



14



15

1) This item is available for the Shooting Brake only.





01

01

02

01	AMG bodystyling	47
02	AMG 5-twin-spoke wheel	47



02 | 45.7 cm | 18"



03 | 45.7 cm | 18"



05 | 45.7 cm | 18"



06 | 45.7 cm | 18"



08 | 09 | 10



11

01

New best performance.



04 | 45,7 cm | 18"



07 | 45,7 cm | 18"



12

01 AMG bodystyling

A sporty exterior for your CLA-Class. The AMG bodystyling package comprises a front apron, side skirts and a rear apron.

| Pictured on previous page.

02 AMG 5-spoke wheel

Finish: black, high-sheen

Wheel: 7.5 J x 18 ET 52 | Tyre: 225/40 R 18

A176 401 0602 7X23

AMG 5-twin-spoke wheel

03 Finish: titanium grey, high-sheen

Wheel: 7.5 J x 18 ET 52 | Tyre: 225/40 R 18

A176 401 0302 7X21

04 Finish: black, high-sheen

Wheel: 7.5 J x 18 ET 52 | Tyre: 225/40 R 18

A176 401 0302 7X23

AMG multi-spoke wheel

05 Finish: titanium grey, high-sheen

Wheel: 7.5 J x 18 ET 52 | Tyre: 225/40 R 18

A176 401 0200 7X21

06 Finish: black, high-sheen

Wheel: 7.5 J x 18 ET 52 | Tyre: 225/40 R 18

A176 401 0200 7X23

07 Finish: titanium grey, ceramic, high-gloss polished

Wheel: 7.5 J x 18 ET 52 | Tyre: 225/40 R 18

A176 401 0200 7X15

08–10 AMG hub caps

The AMG hub cap's centre lock look adds a further sporty touch to your light-alloy wheel. Available in red, black matt and dark chrome shadow metallic. Simple to fit without the use of tools.

11 AMG door pin

In high-quality stainless steel.

12 AMG floor mat

With embroidered AMG lettering.

AMG Indoor Car Cover | not pictured

Silver-coloured with black AMG logo.

Light-alloy wheels are supplied without tyres, wheel bolts, valve caps or hub caps.



Mercedes through and through.

DESIGN & DEVELOPMENT

Mercedes-Benz Genuine Accessories make your dream car a reality – while ensuring that it remains a Mercedes-Benz through and through:

- ▶ Individualisation options are developed in accordance with the Mercedes-Benz car design philosophy.
- ▶ The use of CAD data from Mercedes-Benz Vehicle Development ensures precision-fit accessories.



QUALITY & SAFETY

When it comes to Mercedes-Benz vehicles, quality and safety are paramount. You can feel equally safe with Mercedes-Benz Genuine Accessories as a result of:

- ▶ Stringent safety measures and extensive load testing, including the use of crash test facilities and the wind tunnel.
- ▶ Harmonised development of both vehicle and Mercedes-Benz Genuine Accessories.
- ▶ The highest standards, frequently far in excess of those prescribed by law.

FUNCTION & OPERATION

Mercedes-Benz Genuine Accessories form part of the vehicle concept from the outset. This results in impressive functional solutions:

- ▶ Fully integrated telematics products can be operated safely and conveniently using the multifunction steering wheel.
- ▶ Roof-mounted carrier systems can be fitted quickly and without the use of additional tools.
- ▶ Instructions and manuals are in standard format and easy to understand.

ADVICE & FITTING

No one is as familiar with the ins and outs of your vehicle as our employees. And the same goes for Mercedes-Benz Genuine Accessories:

- ▶ Contact your Mercedes-Benz partner for expert advice in matters relating to service and sales.
- ▶ Trust our trained specialists when it comes to fitting Mercedes-Benz Genuine Accessories.

There are many ways to explore the range of Genuine Accessories for your CLA-Class. The choice is yours.



MERCEDES-BENZ ACCESSORIES WEBSITE

Visit Mercedes-Benz Accessories online. The website provides regularly updated information about Mercedes-Benz Genuine Accessories & the Mercedes-Benz Collection.



Visit our website at
www.mercedes-benz-accessories.com



ACCESSORIES CONFIGURATOR

Here you will find the latest Genuine Accessories for over 50 Mercedes-Benz vehicles – including your model. Choose new light-alloy wheels to complement your vehicle colour, for example, or discover which roof box best fits your needs.



For further information, go to
www.mercedes-benz-accessories.com/configurator

Genuine Accessories for the CLA-Class.

Description	p.	Item no.
Adapter for trailer	41	A000 821 1856
Alustyle Quickfix basic carrier bars¹⁾	39	A117 890 0093
Alustyle Quickfix basic carrier bars²⁾	39	A117 890 0193
AMG door pin, round	47	A000 766 0228
AMG floor mat		
LHD, driver's floor mat, black	47	A246 680 3048 9A84
LHD, complete set, black	47	A246 680 2848 9A84
AMG front apron		
with Active Parking Assist including PARKTRONIC	47	A117 880 5840
with Active Parking Assist without PARKTRONIC	47	A117 880 5740
AMG hub cap, red	47	A000 400 0900 3594
AMG hub cap, matt black	47	A000 400 0900 9283
AMG hub cap, chrome shadow dark metallic	47	A000 400 0900 9790
AMG Indoor Car Cover¹⁾	47	A117 899 0086
AMG Indoor Car Cover²⁾	47	A117 899 0000
AMG light-alloy wheels³⁾	47	from page 47
AMG rear apron		
with Active Parking Assist including PARKTRONIC	47	A117 880 5640
with Active Parking Assist without PARKTRONIC	47	A117 880 5540
AMG side skirts	47	A176 690 0740
Apps for COMAND Online	07	on request
Audio 20 CD with 6-disc CD changer	06	on request
"BABY-SAFE plus II" child seat, Limited Black, with automatic child seat recognition	34	A000 970 3600 9H95
Becker® MAP PILOT (in conjunction with Code 508)	06	A166 900 8712
Bluetooth® (SAP) telephone module, V4	10	A212 906 6303
Boot tub, shallow	42	A117 814 0041

Usability in conjunction with the listed vehicle models may be limited due to restrictions regarding model year, engine or standard equipment/optional extras. Please contact your Mercedes-Benz partner for further details.

Description	p.	Item no.
Charger with trickle charge function (ECE version, 5 A)	43	A000 982 3021
Charger with trickle charge function (ECE version, 25 A)	43	A000 982 0321
CLASSIC floor mats		
CLASSIC all-season floor mat		
LHD, driver and front passenger mats, black	31	A176 680 2200 9G33
Rear mats	31	A176 680 2800 9G33
CLASSIC rep floor mat		
LHD, driver and front passenger mats, black	31	A176 680 7500 9G32
Rear mats	31	A176 680 3700 9G32
CLASSIC velour floor mat		
LHD, complete set, black/black	31	A117 680 4400 9J57
LHD, complete set, black/crystal grey	31	A117 680 4400 7N88
LHD, complete set, black/sahara beige	31	A117 680 4400 8S68
COMAND Online with 6-disc DVD changer	07	on request
COMAND Online without DVD changer	07	on request
Concertina load sill protector	42	A176 680 2100
Coolbox	10	A000 820 4206
Drinks holder	32	A176 680 0591 9051
Drive Kit Plus for the iPhone®¹⁾	09	on request
"DUO plus" child seat, Limited Black, with automatic child seat recognition	34	A000 970 3700 9H95
Emergency spare wheel (3.5 J x 17 ET 19.5)	43	A246 400 2600 2000
Emergency spare wheel bag	43	A000 585 1195
Europe navigation update for COMAND Online and Garmin® MAP PILOT	06	on request
Fluorescent jacket, compact, yellow	43	A000 583 3500
Garmin® MAP PILOT	06	A218 906 8901

1) Only available for the Coupé.

2) Only available for the Shooting Brake.

3) Light-alloy wheels are supplied without tyres, wheel bolts, valve caps or hub caps.

Description	p.	Item no.
Headrest cover for "BABY-SAFE plus II", chilli red	34	A000 970 0156 3E16
Headrest cover for "BABY-SAFE plus II", flannel grey	34	A000 970 0156 7N37
Headrest cover for "DUO plus", chilli red	34	A000 970 0356 3E16
Headrest cover for "DUO plus", flannel grey	34	A000 970 0356 7N37
Headrest cover for "KIDFIX", chilli red	34	A000 970 0256 3E16
Headrest cover for "KIDFIX", flannel grey	34	A000 970 0256 7N37
Hub caps, black with chrome star	20	B6 647 0200
Hub caps, himalaya grey with chrome star	20	A220 400 0125 7756
Hub caps, matt black with chrome star	20	A220 400 0125 9283
Hub caps, roadster design, black	20	B6 647 0201
Hub caps, roadster design, blue	20	A171 400 0125 5337
Hub caps, titanium silver with chrome star	20	B6 647 0202
Illuminated door sill panels (set of 2)	32	A246 680 8000
Integral child seat padded play table	34	A205 970 0000 9H95
Integral child seat protective covering	34	B6 687 0099
"KIDFIX" child seat, Limited Black, with automatic child seat recognition	34	A000 970 3800 9H95
Lateral support headrest for integral child seat ²⁾		
black	34	A205 970 7050
grey	34	A204 970 4850
Light-alloy wheels ³⁾	14	from page 14
Luggage fastener	43	A001 987 1414
Luggage net, boot floor ¹⁾	43	A204 868 0774
Luggage net, boot floor ²⁾	43	A166 868 0174
Luggage net, load sill	43	A117 868 0174

Description	p.	Item no.
Media Interface Performance Cable, AUX, NTG4.5	11	A003 827 0304
Media Interface Performance Cable, iPod®/AUX, NTG4.5	11	A003 827 0404
Media Interface Performance Cable, iPod®, NTG4.5	11	A003 827 0204
Media Interface Performance Cable, iPod®, NTG5	11	A222 820 4315
Media Interface Performance Cable, micro USB, NTG5	11	A222 820 4415
Media Interface Performance Cable, Lightning, NTG4.5	11	A000 827 1200
Media Interface Performance Cable, Lightning, NTG5	11	A222 820 8700
Media Interface Performance Cable, USB, NTG4.5	11	A002 827 2304
Mercedes-Benz Sport Equipment		
5-twin-spoke wheel	27	A246 401 2102 7X36
Brake system kit, red	26	A176 421 1798
Door sill	27	A176 680 5000
Exterior mirror covers, Carbon-Style ¹⁾	24	A117 811 0000
Exterior mirror housings, high-gloss black	24	A212 810 0079
Front apron spoiler lip, Carbon-Style ¹⁾	24	A117 880 3700
Illuminated Mercedes star, control unit	24	A166 900 2808
Illuminated Mercedes star, trim part	24	A166 817 0316
Illuminated Mercedes star, wiring harness	24	A117 820 0100
Night styling package ¹⁾	24	A117 673 0500
Rear spoiler ¹⁾	24	A117 793 0188
"Road" decal kit	26	A117 989 0185
Sport badge	26	A176 817 0420
Stainless steel sports pedals		
for models with automatic transmission	27	A246 290 5501
for models with manual transmission	27	A246 290 5401
"Track" decal kit	26	A117 989 0285
Velour floor mat, set of 4, black	27	A117 680 3200 3D16

Genuine Accessories for the CLA-Class.

Description	p.	Item no.
Mobile-phone holders The range is being extended all the time. Please contact your Mercedes-Benz partner for details.	11	on request
Mud flaps, front set	20	A246 890 0078
Mud flaps, rear set	20	A117 890 0078
Multipurpose holder	32	A176 680 0491 9051
New Alustyle bicycle rack	40	A000 890 0293
New Alustyle ski and snowboard rack "Comfort"	40	A000 890 0393
New Alustyle ski and snowboard rack "Standard"	40	A000 890 0493
Rear-mounted bicycle rack for trailer coupling, folding (ECE) for max. 2 cycles	41	A000 890 0300
Rear-mounted bicycle rack for trailer coupling, folding (ECE) for max. 3 cycles	41	A000 890 0400
Rectifier	43	A000 982 0021
Reversible mat¹⁾	43	A117 680 0046
Reversing camera¹⁾	10	A117 905 6801
Rim locks, black	21	A001 990 1607
Rim locks, silver	21	B6 647 0155
Roof box 330, matt silver	39	A000 840 0400
Roof box 400, black metallic	39	A000 840 0000
Roof box 400, matt silver	39	A000 840 0100
Roof box 450, black metallic	39	A000 840 0300
Roof box 450, matt silver	39	A000 840 0200

Usability in conjunction with the listed vehicle models may be limited due to restrictions regarding model year, engine or standard equipment/optional extras. Please contact your Mercedes-Benz partner for further details.

Description	p.	Item no.
SD memory card	06	B6 782 3973
Shopping crate	43	B6 647 0995
Ski rack insert for roof box 330	39	A000 840 4718
Ski rack insert for roof box 400	39	A000 890 2193
Ski rack insert for roof box 450	39	A000 840 4818
Snap-in module for load compartment²⁾	42	A166 860 0034
Extension kit for snap-in module for load compartment²⁾	42	A166 860 0751
Snow chain RUD-compact easy2go	21	B6 755 0032
205/55 R 16		
205/50 R 17		
Snow chain RUDmatic Hybrid	21	B6 755 0038
225/40 R 18		
225/45 R 17		
Stowage crate	42	A000 814 0041
Style & Travel Equipment		
Base support	33	A000 810 3300
Coat hanger	33	A000 810 3400
Folding table	33	A000 816 0000
Universal hook	33	A000 814 0000
Tie-down strap	43	A000 890 0294
Trailer coupling	41	on request
Transport and stowage bag for Alustyle Quickfix basic carrier bars	39	A000 890 0111
Tyre pressure gauge	10	A 117 905 68 01
Valve caps, black	21	B6 647 2002
Vehicle tool kit	43	B6 685 0791

1) Only available for the Coupé.

2) Only available for the Shooting Brake.

3) Light-alloy wheels are supplied without tyres, wheel bolts, valve caps or hub caps.

March 2015.

Please note: changes may have been made to the products since this publication went to print (03/2015). The manufacturer reserves the right to make changes to the design, form, colour and specification during the delivery period, provided these changes, while taking into account the interests of the vendor, can be deemed reasonable with respect to the purchaser. Where the vendor or the manufacturer uses symbols or numbers to describe an order or the subject of an order, no rights may be derived solely from these. The illustrations may show accessories and items of optional equipment which are not part of standard specification. Colours may differ slightly from those shown, owing to the limitations of the printing process. This publication is distributed internationally. Information given regarding statutory regulations, legal requirements and taxation and the consequences thereof applies to the Federal Republic of Germany only and is correct at the time of going to press. Please consult your Mercedes-Benz sales representative for final details.

Provider: Daimler AG, Mercedesstr. 137, 70327 Stuttgart, Germany
Mercedes-Benz Accessories GmbH · A Daimler Company

3230 · 2080 · 02-01/0315 · Printed in the Federal Republic of Germany
© Copyright 2015 Mercedes-Benz Accessories GmbH. All rights reserved.