

Genuine Accessories

GLE and M-Class



Mercedes-Benz
The best or nothing.





Exterior



Interior

Safety and Quality.

At Mercedes-Benz the vision of accident-free driving is paramount. Because where Mercedes-Benz vehicles are concerned, we take the same uncompromising approach to safety as we do to driving pleasure. There are no compromises when it comes to developing the range of Genuine Accessories either. Perfectly tailored to your vehicle and extensively tested by our engineers, the products not only make an active contribution to your safety but also protect other road users.

The star logo has always signified allure, perfection and responsibility – attributes which are also reflected in the quality of our accessories, all of which further enhance our vehicles' style or sportiness – not to mention their already outstanding comfort. That special sense of design, zeitgeist and attention to detail make a vehicle a true Mercedes-Benz. From that first outward impression to the inner attributes. Quality you can sense just by looking, listening, touching – and of course driving.



Cargo & Care AMG

Contents.

- 4 | Exterior**
- 6 | Light-alloy wheels
- 10 | Wheel accessories
- 12 | Add-on parts
- 14 | Interior**
- 16 | Telematics
- 20 | Interior
- 22 | Child safety
- 24 | Cargo & Care**
- 26 | Carrier solutions
- 30 | Interior stowage
- 34 | AMG**
- 34 | AMG accessories

Please note: some of the products shown here are only available for the M-Class, manufactured up until 08/15, while others are only available for the GLE, manufactured from 09/15. Any such restrictions will be indicated where applicable.

Exterior.

Discover your inner adventurer. Explore the joys of the open road – and beyond. Genuine Accessories allow you to add refined highlights and make your premium Mercedes-Benz SUV the star of your own adventure. Whatever the terrain.

01 5-twin-spoke wheels.	06
02 Mud flaps.	11
03 Door handle recesses.	12
04 Running boards.	12





03

04

02

01

Accentuating the appeal. Making a mark. Genuine wheels.

			Item no.	
01	10-spoke wheel.	Finish: black, high-sheen	Wheel: 9 J x 21 ET 53 Tyre: 265/40 R21 ¹	A166 401 1700 7X23
02	10-spoke wheel.	Finish: matt black, high-sheen	Wheel: 9 J x 20 ET 57 Tyre: 265/45 R20 ¹	A166 401 1600 7X36
03	5-twin-spoke wheel.	Finish: himalaya grey, high-sheen	Wheel: 9 J x 21 ET 53 Tyre: 265/40 R21 ¹	A166 401 2702 7X21
04	10-spoke wheel.	Finish: palladium silver, high-sheen	Wheel: 9 J x 20 ET 57 Tyre: 265/45 R20 ¹	A166 401 1802 7X19
05	5-spoke wheel.	Finish: himalaya grey, high-sheen	Wheel: 9 J x 20 ET 57 Tyre: 265/45 R20 ¹	A166 401 1300 7X21
06	5-twin-spoke wheel.	Finish: titanium silver	Wheel: 9 J x 20 ET 57 Tyre: 265/45 R20 ¹	A166 401 0902 9765

Because of differences in national regulations, various different versions of each vehicle exist. Please also bear in mind that vehicle development is permanently ongoing. As a result, not all of the wheel/tyre combinations shown in this brochure will be approved for your particular Mercedes-Benz. Your Mercedes-Benz partner has access to constantly updated information on every Mercedes-Benz wheel, including the relevant technical inspection findings and licensing conditions, and will be happy to advise you.

¹ Not compatible with snow chains.

Light-alloy wheels are supplied without tyres, wheel bolts, valve caps or hub caps.



53.3 cm | 21" 01 02



50.8 cm | 20"



53.3 cm | 21" 03 04



50.8 cm | 20"



50.8 cm | 20"



05 06 50.8 cm | 20"



48.3 cm | 19"



01 02 48.3 cm | 19"



48.3 cm | 19"



03 04 48.3 cm | 19"



48.3 cm | 19"



05 06 48.3 cm | 19"



48.3 cm | 19"



07 08 45.7 cm | 18"



45.7 cm | 18"



09 10 45.7 cm | 18"

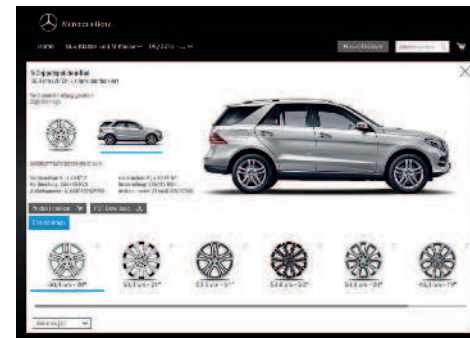


48.3 cm | 19"



11 12 43.2 cm | 17"

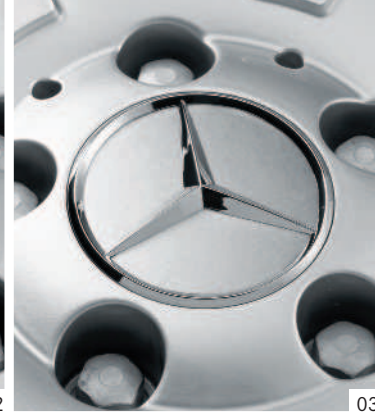
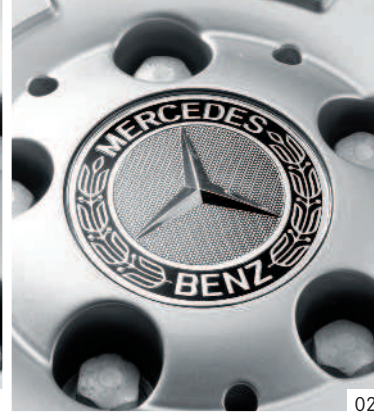
			Item no.	
01	5-twin-spoke wheel.	Finish: himalaya grey	Wheel: 8 J x 19 ET 56 Tyre: 255/50 R19	A166 401 1500 7756
02	5-twin-spoke wheel.	Finish: titanium silver	Wheel: 8.5 J x 19 ET 62 Tyre: 255/50 R19	A166 401 1702 9765
03	5-twin-spoke wheel.	Finish: himalaya grey, high-sheen	Wheel: 8.5 J x 19 ET 59 Tyre: 255/50 R19 ¹	A166 401 1100 7X21
04	7-spoke wheel.	Finish: himalaya grey, high-sheen	Wheel: 8.5 J x 19 ET 62 Tyre: 255/50 R19 ¹	A166 401 2902 7X21
05	7-spoke wheel.	Finish: titanium silver	Wheel: 8.5 J x 19 ET 59 Tyre: 255/50 R19 ¹	A166 401 0802 9765
06	5-twin-spoke wheel.	Finish: titanium silver	Wheel: 8 J x 19 ET 56 Tyre: 255/50 R19	A166 401 0702 9765
07	5-spoke wheel.	Finish: titanium silver	Wheel: 8.5 J x 19 ET 59 Tyre: 255/50 R19 ¹	A166 401 0202 9765
08	7-spoke wheel.	Finish: titanium silver	Wheel: 8 J x 18 ET 56.5 Tyre: 255/55 R18	A166 401 1602 9765
09	10-spoke wheel.	Finish: titanium silver	Wheel: 8 J x 18 ET 56.5 Tyre: 265/60 R18	A166 401 1202 9765
10	10-spoke wheel.	Finish: titanium silver	Wheel: 8 J x 18 ET 56 Tyre: 255/55 R18	A166 401 0602 9765
11	7-spoke wheel.	Finish: titanium silver	Wheel: 7.5 J x 17 ET 53 Tyre: 235/65 R17	A166 401 1002 9765
12	10-spoke wheel.	Finish: titanium silver	Wheel: 7.5 J x 17 ET 53 Tyre: 235/65 R17	A166 401 0502 9765



Choose your favourite wheels online. Our Accessories Configurator shows you at a click of the mouse how the various Mercedes-Benz light-alloy wheels will look on your vehicle. Visit our website at <http://configurator.mercedes-benz-accessories.com>.

¹ Not compatible with snow chains.

Light-alloy wheels are supplied without tyres, wheel bolts, valve caps or hub caps.



Little details. Big impression.

Wheel accessories.

	Item no.
Hub caps. Protect the hub from dirt. Available in the following versions:	
01 roadster design, blue.	A171 400 0125 5337
02 roadster design, black.	A171 400 0125 9040
03 titanium silver with chrome star.	B6 647 0202
04 himalaya grey with chrome star.	A220 400 0125 7756
05 black with chrome star.	B6 647 0200
06 matt black with chrome star.	A220 400 0125 9283
07 RUDmatic snow chain. Luxury, easy-fit snow chain with robust plastic ring to protect the wheel. Top test results with regard to traction, stopping distances, smoothness, lateral stability and durability.	on request
Mud flaps not pictured. Protect the underbody and sides of the vehicle from loose chippings and dirt. Available in pairs for front or rear axle. Black, grained.	
Front set, without running board, black.	A166 890 0078
Front set, with running board, black.	A166 890 0478
Rear set, black¹.	A166 890 0278
Rear set, black².	A166 890 1000
08 Black valve caps, set of 4. Stylish highlights in a new design. Protect the valves from dirt.	B6 647 2002
09 Black rim locks. Protect your valuable light-alloy wheels from theft. Set consisting of coded key and one lock per wheel.	A001 990 1707
10 Vehicle tool kit. Everything you need to change a wheel – from the wheel wrench to a pair of gloves. All handily stored in a compact bag.	A166 580 0400
Tyre pressure monitor not pictured. Allows you to carry out a quick tyre pressure check on the road or at home. Keeping tyres at the optimum pressure saves fuel and reduces tyre wear. Suitable for all motor vehicle tyre valves and for cycle valves. Supplied with leather pouch.	B6 658 8140

¹ Product only available for the M-Class.

² Product only available for the GLE.

Making a statement. In precision-tailored style. Genuine add-on parts.

	Item no.
01 Illuminated Mercedes star. Let your star shine. Thanks to fibre-optic cables and LED technology, the central star emblem in your Mercedes' radiator grille lights up when you remotely lock/unlock the vehicle or open the door or tailgate. Only functions when engine is switched off. Not in conjunction with DISTRONIC (Code 233).	
Trim part¹.	A166 817 3000
Trim part².	A166 817 0316
Control unit.	A166 900 2808
Wiring harness.	A166 820 1513
Contact bridge.	A000 546 1366
02 Fin attachments for bonnet. Eye-catching high-sheen chromed trim. 6-piece set for the air intakes in the bonnet.	A166 880 0082
03 Door handle recesses. High-sheen door handle recesses in chrome design. Protect the recess behind the door handle from scratches and offer a high-quality, individual look.	A166 760 0000
04 Running boards. The aluminium-look running boards are a real eye-catcher. They are mounted at the height of the side skirts and make it easier to get into the vehicle, front and rear. Rubber studs increase safety by preventing slipping.	A166 520 0031
05 Wallbox^{1, 3}. This compact charging station for electric vehicles and PLUG-IN HYBRID models from Mercedes-Benz and smart provides a faster and more convenient way to recharge your vehicle. Depending on the vehicle model, it can offer a charging capacity of up to 22 kW. The integral locking mechanism prevents the plug from being disconnected from the vehicle during the charging process. The wallbox features an LED charge indicator and can be located indoors or outdoors. The wallbox must be installed by a qualified electrician. To help ensure that this is the case, Mercedes-Benz and smart offer an incentive package in the form of installation vouchers which can be redeemed with "ElectroDrive Europe", the installation partner for smart and Mercedes-Benz. Charging capacity and charge times may vary from country to country and depend on the domestic power supply.	A000 906 6305

¹ Product only available for the GLE.

² Product only available for the M-Class.

³ Wallbox for Europe (Germany, Spain, Italy, Portugal, Austria, Belgium, Switzerland, the United Kingdom, Luxembourg, the Netherlands and Denmark). Basic/connected variant: indicates whether a standard wallbox (basic) or a variant with PLC (connected). In the smart electric drive, the PLC variants can establish a connection between an existing network and the vehicle via PLC/Ethernet. This means that the vehicle homepage can be used even in underground garages where there is no internet reception via the standard communication module, for example.



Discover a very special extra – the illuminated Mercedes star – and make a sparkling impression as the evening draws in.



02



01 03
04 05







Interior.

Make your GLE a feel-good zone for passengers young and old. Discover the new art of letting go – secure in the knowledge that your safety is our foremost concern. With perfect on-board entertainment and intelligent travel guides, you can make the moment unforgettable.

01	Garmin® MAP PILOT.	17
02	"BABY-SAFE plus II" child seat.	22



02



01 03
03



Reliably showing the way ahead. At a glance. Mercedes-Benz telematics.

Giving sound and direction to your new-found freedom. The networking of telecommunication and informatics systems inside the vehicle makes for a totally new entertainment experience. In addition to telephone, audio, video and internet, with the Garmin® MAP PILOT your entire navigation is available at a glance too.

With the iPad® Docking Station for the rear compartment, you can rotate or adjust the viewing angle of the iPad®, and position it vertically or horizontally – giving you full flexibility and ensuring that your rear passengers are perfectly entertained during their journey. Just one of the many exclusive details that are designed to help you give the interior your own personal touch.

	Item no.
01 Garmin® MAP PILOT. Transforms your Audio 20 radio into a high-performance navigation system with 3D map views. Garmin® MAP PILOT uses the standard-fit 17.8 cm colour TFT display and can be conveniently operated via the vehicle's Controller and the Audio 20 keypad. Available for a whole range of countries. For details and the latest updates, visit the Mercedes-Benz Shop at http://shop.mercedes-benz.com .	A218 906 2302
02 iPad® Docking Station for rear compartment. The mount, which can be tilted and rotated, allows you to position your iPad® to suit your requirements, vertically or horizontally. All of your device's control elements remain fully accessible. The mount and the supplied protective film for the device's screen enhance crash safety. The film also helps prevent the display from being scratched. The mount is very easy to fit to the head restraints without the use of tools. Simply slide the iPad® into the mount until it latches securely into place. Integral charging option – connect commercial charger to 12 V socket.	
For iPad® 4.	A205 820 6500
For iPad® Air.	A205 820 7400
For iPad® Air 2.	A205 820 2301
iPad® Docking Station for rear compartment not pictured. The ergonomic, crashproof Docking Station introduces the iPad® and all of its familiar functions to your Mercedes-Benz. All connections, e.g. for your headphones or charging cable, remain accessible. The mount is fitted to the head restraint and can be tilted and rotated around 90°. Available for iPad® 2 and iPad® 3.	A218 820 1176
03 Rear Seat Entertainment System, black ¹ . This elegant DVD system allows the rear passengers to watch DVDs, look at their favourite pictures and even play video games on two superb, tilting 17.8 cm colour screens. Keeping them entertained during your journey – and outside the vehicle, as the monitors can be removed from the mount with a click and used anywhere with the aid of the 230 V/12 V mains adapter provided. The AV-IN connection and the USB, SD card and AUX interfaces allow other storage media to be used too. A separately available video cable allows users to watch videos or view images from external sources. Supplied with two sets of infrared headphones and a remote control. The crashproof, theft-protected docking stations are firmly attached to the seat. Also available as a single monitor set.	A166 870 0796

¹ The system is designed to be retrofitted in your Mercedes-Benz – no factory-fitted pre-installation required.

	Item no.
01 Universal smartphone holder. The universal smartphone holder allows you to use a variety of different phones in conjunction with the vehicle's external aerial. The size of the holder can be altered at the upper and lower edge to offer the optimum fit for each smartphone. The holder is fitted to the pre-installation in the centre console as normal and the smartphone is connected to the audio system via Bluetooth®. The inductive aerial in the holder, together with the connection to the external aerial, ensures optimum reception during phone calls or when using the internet e.g. MB Apps or internet radio. Separately available charging cables with micro USB or Lightning connectors allow you to charge your smartphone in conjunction with the universal smartphone holder. These cables have a specially shaped plug which is ideal for use in your vehicle's centre console. A list of currently supported phones can be found at www.mercedes-benz.com/connect .	A222 820 6401
Charging cable with micro USB connector.	A222 820 6601
Charging cable with Lightning connector.	A222 820 6701
02 Mercedes-Benz Bluetooth® (SAP)¹ telephone module^{2,3}. The telephone module ensures that COMAND Online has a fast, stable and secure internet connection via the integral UMTS module and the direct link to the vehicle's external aerial. You can simultaneously talk on the phone, use Mercedes-Benz Apps and have your text messages read aloud. The telephone module can be used as a permanently installed telephone or as a data modem with all of the functions of Convenience Telephony (Code 386): it is operated via your multimedia system and uses the personal contact details on your mobile's SIM card. With USB interface for power supply. The telephone module can be operated via the SIM card in your mobile phone or by inserting a SIM card directly into the module.	A212 906 6303
03 Head-up Display. Enhances safety and comfort by displaying key information in the driver's field of vision. The system continuously shows the speed, navigation directions and much more on a transparent display panel, allowing you to keep your eyes on the traffic around you. Information from your assistance systems is also intelligently displayed. The Mercedes-Benz Head-up Display projects a pin sharp, virtual colour image which appears to hover above the bonnet. Functionality depends to some extent on the optional extras selected. The Head-up Display is controlled via your multifunction steering wheel and a special menu in your instrument cluster. And when switched off, the transparent display panel slides away into an unobtrusive case.	on request
04 Europe navigation DVD for COMAND Online and Garmin® MAP PILOT. Did you know that we update 20% of the information on our navigation media every year? Changes include new roads and junctions, altered priorities, new points of interest such as filling stations and restaurants and additional countries, above all in Eastern Europe ⁴ .	on request
05 Media Interface consumer cables⁵. Control your iPod®, your iPhone® or other devices with a micro USB connection via the multifunction steering wheel or your audio system. Display the song, artist or album/playlist of your choice in the instrument cluster or your audio system's monitor. And charge your device's battery – via the universal interface in the centre console. For further information, go to www.mercedes-benz.com/connect .	A222 820 8800

¹ SAP (SIM Access Profile) enables the module to read your mobile's SIM card.

² Only in conjunction with Convenience Telephony (Code 386).

³ Product only available for the M-Class.

⁴ For the latest navigation updates, visit our online shop at <http://shop.mercedes-benz.com>. Orders can only be placed and deliveries made within Germany.

⁵ For the M-Class the product is only available for models with Media Interface (Code 518).

Please ask your Mercedes-Benz partner whether your mobile phone is suitable for use with COMAND Online. The Mercedes-Benz Bluetooth® (SAP) telephone module with integral UMTS module and a direct connection to the vehicle aerial ensures that COMAND Online has a fast, stable and secure internet connection.



Telephone module + SIM



Telephone module + mobile phone



01 02



03



04 05

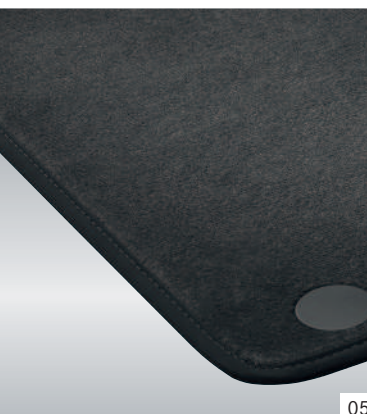




01 02



03 04



05



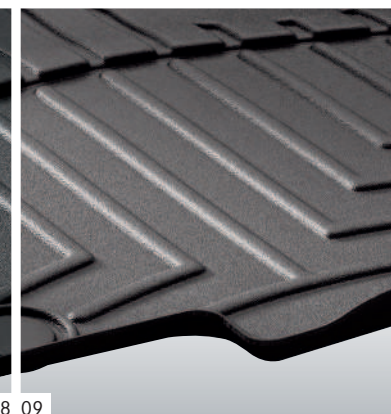
06 07



10 11



08 09



12 13



All under control. With tailor-made travel solutions.

Interior accessories.

	Item no.
<p>Style & Travel Equipment¹. These head restraint elements are simple to fit and remove. The modular system centres around a base support which can be combined with the product of your choice – coat hanger, universal hook or folding table.</p>	
01 Base support.	A000 810 3300
02 Coat hanger.	A000 810 3400
03 Universal hook.	A000 814 0000
04 Folding table.	A000 816 0000
<p>CLASSIC velour mats, set of 4. Elegant, high-quality tufted velour mats, featuring metal badge with Mercedes-Benz lettering.</p>	
05 black	A166 680 0048 9F87
06 espresso brown ²	A166 680 0048 8T47
07 SPORTIV velour mats, set of 4, black. High-quality, sporty polyamide velour with loop pile. Metal badge with Mercedes-Benz lettering on driver and front passenger mats.	A166 680 0448 9G63
<p>CLASSIC floor mat trays, set of 3. Made of robust, washable plastic to cope with the greatest demands. Covers the entire footwell. The raised edges and structured surface help keep the floor clean and dry. With distinctive Mercedes-Benz lettering.</p>	
08 black	A166 680 3501 9051
09 mocha brown	A166 680 3501 7J07
10 Illuminated door sill panels, white illumination. A distinctive, eye-catching accessory, whether in daylight or at night – thanks to brightly illuminated Mercedes-Benz lettering, set in an elegant ground stainless steel panel.	on request
11 Sports pedals in stainless steel. High-sheen stainless steel pedals with non-slip stud panel.	A166 290 2601
12 Heated leather steering wheel ³ . Elegant 4-spoke steering wheel in high-quality leather. Excellent grip, thanks to thicker rim. Integral heating keeps hands pleasantly warm during the colder months.	on request
13 Wood/leather steering wheel ³ . Elegant wood/leather steering wheel, trimmed in high-quality, finely textured leather. With thicker rim and pronounced thumbrests for a particularly good grip. Available in various colours to match the interior.	on request

¹ Only for vehicles with head restraint posts. Not for vehicles with Code 864 (Rear Seat Entertainment System).

² Product only available for the GLE.

³ Product only available for the M-Class.

Reassuringly protective. Wherever the journey takes you. Child safety.

If your seat features automatic front passenger airbag deactivation with seat occupancy recognition (optional extra Code U10), the front passenger airbag is automatically deactivated when a child seat is fitted to the front passenger seat. All child seats can also be used without the ISOFIX attachment system. Mercedes-Benz child seats are available in the “Limited Black” design.

The covers are washable and very hardwearing. Replacement headrest covers are available for the “BABY-SAFE plus II”, “DUO plus” and “KIDFIX” child seats in chilli red and flannel grey.

	Item no.
01 “KIDFIX” child seat. Booster seat for optimum side-impact protection, with height-adjustable backrest. The “KIDFIX” seat is secured using the 3-point seat belt and ISOFIX attachment points. For children between the ages of around 3.5 and 12 (15 to 36 kg).	A000 970 3800 9H95
02 “DUO plus” child seat. Optimum safety for children between the ages of around 8 months and 4 years (9 to 18 kg). Fitted as standard with top tether, an additional belt for securing the head section, a height-adjustable harness, ventilation channels and ISOFIX attachment points. Adjustable tilt.	A000 970 3700 9H95
03 “BABY-SAFE plus II” child seat. Deep, moulded seat design offers extra side-impact protection for optimum safety. Special padding, designed to protect particularly vulnerable body areas of children up to around 15 months (up to 13 kg).	A000 970 3600 9H95
Headrest cover. For “KIDFIX” child seat.	
04 chilli red	A000 970 0256 3E16
05 flannel grey	A000 970 0256 7N37
Headrest cover not pictured. For “DUO plus” child seat.	
chilli red	A000 970 0356 3E16
flannel grey	A000 970 0356 7N37
Headrest cover not pictured. For “BABY-SAFE plus II” child seat.	
chilli red	A000 970 0156 3E16
flannel grey	A000 970 0156 7N37



3.5 to
12 years

8 months
to 4 years

15 to 36 kg

9 to 18 kg

01 02

03 04 05



up to
15 months

up to 13 kg



Cargo & Care.

All set to push the boundaries – all set for freedom. With perfectly coordinated transport systems for your GLE, you're always ready for action. And able to make the most of the impressive amount of space offered by your premium SUV. Whether today's adventures are big or small.

01 Alustyle Easy-Fix II basic carrier bars for roof rails.	26
02 Roof box 450, black metallic.	26
03 Rear-mounted bicycle rack.	29





02

01

03

Room for adventure. Plus equipment. Genuine transport solutions.

	Item no.
01 Alustyle Easy-Fix II basic carrier bars for roof rails. Aluminium carrier bars, precision-tailored to the body of your Mercedes-Benz – the perfect basis for a range of Mercedes-Benz transport accessories: ski and snowboard rack, bicycle rack or roof boxes. Fitted in next to no time without the use of tools, thanks to new, innovative quick-release fasteners. Aerodynamic Mercedes-Benz design with optimised noise level. Crash-tested. Lockable.	A166 890 1393
Transport and stowage bag not pictured. Robust bag, made from high-quality nylon fabric. Protects your basic carrier bars for roof rails when stowing or transporting them.	A000 890 0111
Mercedes-Benz roof boxes. An aerodynamic design, tailored to your Mercedes-Benz. In extremely durable material. Designed for quick, optimised attachment to the basic carrier bars for roof rails. Particularly convenient loading and unloading thanks to the option of double-sided opening. Lockable from both sides.	
02 Mercedes-Benz roof box 330, matt silver. Capacity approx. 330 litres. Maximum load capacity 50 kg ¹ .	A000 840 0400
03 Mercedes-Benz roof box 400. Capacity approx. 400 litres. Maximum load capacity 75 kg ¹ . Handle strip for easier opening and closing.	
black metallic	A000 840 0000
matt silver	A000 840 0100
04 Mercedes-Benz roof box 450. Capacity approx. 450 litres. Maximum load capacity 75 kg ¹ . Handle strip for easier opening and closing.	
black metallic	A000 840 0300
matt silver	A000 840 0200
05 Ski rack insert. Insert for securing your skis – precision-tailored to the internal dimensions of the roof box.	
For roof box 330. A secure hold for up to 3 pairs of skis ² .	A000 840 4718
For roof box 400. A secure hold for up to 4 pairs of skis ² .	A000 890 2193
For roof box 450. A secure hold for up to 5 pairs of skis ² .	A000 840 4818
06 New Alustyle ski and snowboard rack, Comfort. For up to 6 pairs of skis ² or 4 snowboards. Lockable. Practical pull-out function makes loading and unloading easier.	A000 890 0393
07 New Alustyle ski and snowboard rack, Standard. For up to 4 pairs of skis ² or 2 snowboards. Lockable.	A000 890 0493

¹ Please bear in mind your vehicle's permissible roof load.

² Subject to geometry of skis.



01 05
06



02  50 kg'

03  75 kg'

04  75 kg'



Boxes open on both sides for convenient loading and unloading.



07





01



01 01
03 04



02



Ready. For two-wheeled adventure. Genuine bicycle racks.

	Item no.
01 Rear-mounted bicycle rack for trailer coupling, folding. Easy-to-use, lockable rear-mounted bicycle rack, designed to provide secure transport for 2 or 3 cycles. Extremely simple to fit to the trailer coupling. Securing your bikes on the rack is equally simple. Maximum load of up to 30 kg per rail, making rack suitable for most ebikes. An ingenious roller mechanism means that the load compartment can still be opened. The rack is easy to fold for space-saving stowage in the load compartment, at your holiday accommodation or at home.	
For 2 cycles.	A000 890 0300
For 3 cycles.	A000 890 0400
02 New Alustyle bicycle rack ¹ . Extremely lightweight bicycle rack, designed to be attached to the basic carrier bars for roof rails. Cycles can either be attached to the rack once it is in place on the roof or before it is fitted. Support frame folds down when not in use to reduce drag when travelling without cycles. Suitable for cycles with a max. frame diameter of 98 mm (circular frame tubes) or 110 x 70 mm (oval frame tubes).	A000 890 0293
Distance adapter for bicycle rack not pictured. Connecting element, required when using the New Alustyle bicycle rack. Easy for the customer to fit.	A002 990 0399
03 Adapter for trailer. For trailer with 7-pin plug.	A000 821 1856
04 Electrically folding trailer coupling ² . High corrosion protection. Maximum drawbar load 140 kg.	on request
Semi-automatic folding trailer coupling ³ not pictured. High corrosion protection. Supplied with electrical kit and control unit. Maximum drawbar load 140 kg.	A166 310 0295

¹ Please bear in mind your vehicle's permissible roof load.

² Product only available for the GLE.

³ Product only available for the M-Class.

Make room. For a new dimension in organisation. Genuine load compartment accessories.

	Item no.
01 Partition, black. Robust metal grilles, designed to shield the passenger compartment from items in the load area. Simple to fit to designated points on board. Partition and divider available separately. Divider can only be used in conjunction with partition.	A166 860 0042
02 Divider, black. Solid grille which is attached to the partition. Divides the load compartment into two sections.	A166 860 0142
03 Partition net, black. Protects the passenger compartment from unsecured items in the load compartment.	A166 860 0174
Deep boot tub, black not pictured. Deep edge all round. Made from flexible, impact-resistant plastic. Suitable for transporting foodstuffs.	A166 814 0141
04 Shallow boot tub, black. Made from impact-resistant, non-slip polypropylene. Suitable for transporting foodstuffs. Structured surface holds separately available stowage crate in place. Vehicle's load-securing rings remain accessible.	A166 814 0041
05 Stowage crate, black. A secure hold for items which are liable to tip over or slide around. Optimum functionality only in conjunction with shallow boot tub.	A000 814 0041
06 Concertina load sill protector, black. Protects the rear of the vehicle from scratches when you're loading up – and prevents dirt from the vehicle from getting onto your clothes. Practical design – can be secured to shallow boot tub or reversible mat.	A212 680 0246
07 Snap-in module for load compartment floor ¹ . Partition your load compartment to suit your requirements and prevent the contents from sliding around. The brackets can be freely positioned along the outer edges of the load compartment floor. The system's telescopic frame provides a secure hold. Factory-fitted pre-installation (Code 942) is not required.	A166 860 0034

¹ With the extension kit for the snap-in module in place, concertina bags can be fitted in the load area without pre-installation of the load-securing rails (optional extra Code 942).



03



01 02 04 05

06 07





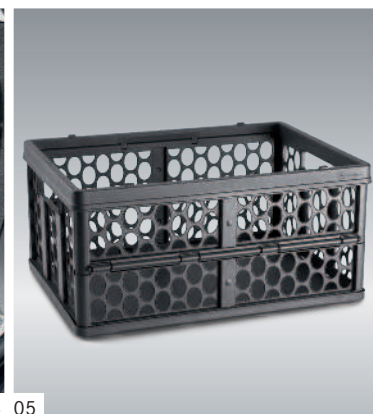
01 02



03



04 05
08 09



06 10



07



08 09



11



		Item no.
01	Luggage net, floor of load compartment, black. Prevents lightweight objects from sliding around during the journey. In pocket format.	A166 868 0174
	Luggage net, load sill, black.	A212 868 0474
02	Luggage cover, black¹. The luggage cover hides your possessions from prying eyes and helps ensure that any valuable items you are carrying are covered by your insurance. Simple to fit.	A166 810 0709 9051
	Luggage cover, basalt grey¹.	A166 810 0709 7J07
	Luggage cover, almond beige¹.	A166 810 0709 8N84
03	Tie-down strap, black. Adjustable strap with fastener – ideal for securing items to the load-securing rings.	A000 890 0294
04	Concertina bags, black. A practical addition to the EASY-PACK load-securing kit (Code 942): these folding, removable bags in robust, washable nylon fabric offer a secure hold for your shopping.	A000 890 0611
05	Collapsible shopping crate, anthracite.	A203 840 0020
06	Reversible mat, black. With one high-quality velour side and one non-slip side. Helps keep the original floor of the load compartment clean. Can be connected to concertina load sill protector.	A166 680 0146
07	Coolbox. Not only cools but warms too. Cools to up to 20°C below ambient temperature – to max. -2°C. Can be switched to warming function. 24 litres. Can be connected to 12 V socket in vehicle or to 230 V power source via separately available rectifier.	A000 820 4206
08	Rectifier. Allows the coolbox to be connected to a 230 V socket at home.	A000 982 0021
09	Charger with trickle charge function, 5 A. Checks, charges and revives your battery – even if it's totally flat. Tailored to your vehicle's complex electronic systems.	A000 982 3021
	25 A. Offers a faster charging process and a selection of different charging modes.	A000 982 0321
10	Fluorescent jacket, compact. Optimising safety: this fluorescent yellow jacket with reflective stripes makes you more visible to others.	A000 583 3500
11	Box of replacement bulbs¹. The box of replacement bulbs ensures that you always have the right bulbs at hand for your vehicle. So if one of the bulbs fails or you're driving in one of the many countries where daytime running lamps are compulsory, you're well prepared.	A000 580 2610

¹ Product only available for the M-Class.

High performance. Your style. AMG genuine accessories.

		Item no.
	AMG bodystyling¹. A sporty exterior for your GLE. AMG bodystyling comprises front apron and rear apron.	
01	Front apron. For vehicles without Active Parking Assist.	A166 880 9701
	Front apron. For vehicles with Active Parking Assist.	A166 880 9801
02	Rear apron. For vehicles without Active Parking Assist.	A166 880 9901
	Rear apron. For vehicles with Active Parking Assist.	A166 880 0002
	AMG velour floor mats, black. With embroidered AMG lettering.	
03	Driver's mat.	A166 680 2748
	Complete set not pictured.	A166 680 2548
04	AMG door sill panels. In brushed stainless steel. Set of 4 with white LED illumination (only front panels are illuminated).	on request
	AMG indoor car cover not pictured. Silver-coloured, with black AMG logo.	on request

			Item no.	
05	AMG 5-twin-spoke wheel.	Finish: titanium grey, high-sheen	Wheel: 9.0 J x 21 ET 53 Tyre: 265/40 R21	A166 401 2102 7X21
06	AMG 5-twin-spoke wheel.	Finish: black, high-sheen	Wheel: 9.0 J x 21 ET 53 Tyre: 265/40 R21	A166 401 2102 7X23
07	AMG 5-twin-spoke wheel.	Finish: black, high-sheen	Wheel: 9.0 J x 21 ET 53 Tyre: 265/40 R21	A166 401 2402 7X23
08	AMG 5-twin-spoke wheel.	Finish: silver, ceramic polished	Wheel: 9.0 J x 21 ET 53 Tyre: 265/40 R21	A166 401 2402 7X15
09	AMG 5-twin-spoke wheel.	Finish: high-gloss, titanium black	Wheel: 9.0 J x 21 ET 53 Tyre: 265/40 R21	A166 401 2402 9141
10	AMG 5-spoke wheel.	Finish: titanium grey, high-sheen	Wheel: 9.0 J x 20 ET 57 Tyre: 265/45 R20	A166 401 2002 7X21
11	AMG 5-spoke wheel.	Finish: black, high-sheen	Wheel: 9.0 J x 20 ET 57 Tyre: 265/45 R20	A166 401 2002 7X23

¹ Available from 4th quarter of 2015.

Light-alloy wheels are supplied without tyres, wheel bolts, valve caps or hub caps.



02

03



01 04



05 53.3 cm | 21"



06 53.3 cm | 21"



53.3 cm | 21" 07 08 53.3 cm | 21"



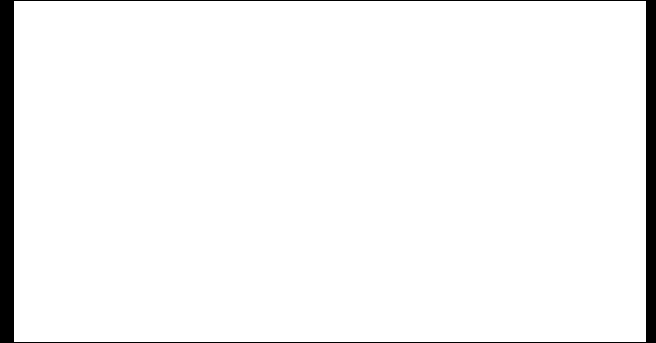
09 53.3 cm | 21"



10 50.8 cm | 20"



11 50.8 cm | 20"



September 2015.

Please note: changes may have been made to the products since this publication went to press (07/2015). The manufacturer reserves the right to make changes to the design, form, colour and specification during the delivery period, provided these changes, while taking into account the interests of the vendor, can be deemed reasonable with respect to the purchaser. Where the vendor or the manufacturer uses symbols or numbers to describe an order or the subject of an order, no rights may be derived solely from these. The illustrations may show accessories and items of optional equipment which are not part of standard specification. Colours may differ slightly from those shown, owing to the limitations of the printing process. This publication is distributed internationally. It may contain products and services which are not available in certain countries. Information given regarding statutory regulations, legal requirements and taxation and the consequences thereof applies to the Federal Republic of Germany only and is correct at the time of going to press. Please consult your Mercedes-Benz retailer for final details.

Daimler AG, Mercedesstr. 137, 70327 Stuttgart, Germany
Mercedes-Benz Accessories GmbH · A Daimler Company

3230 · 2083 · 02-01/0915 · Printed in the Federal Republic of Germany
© 2015 Mercedes-Benz Accessories GmbH. All rights reserved.