



PEUGEOT

# *New 208 hatchback*

3 and 5 Door



PEUGEOT



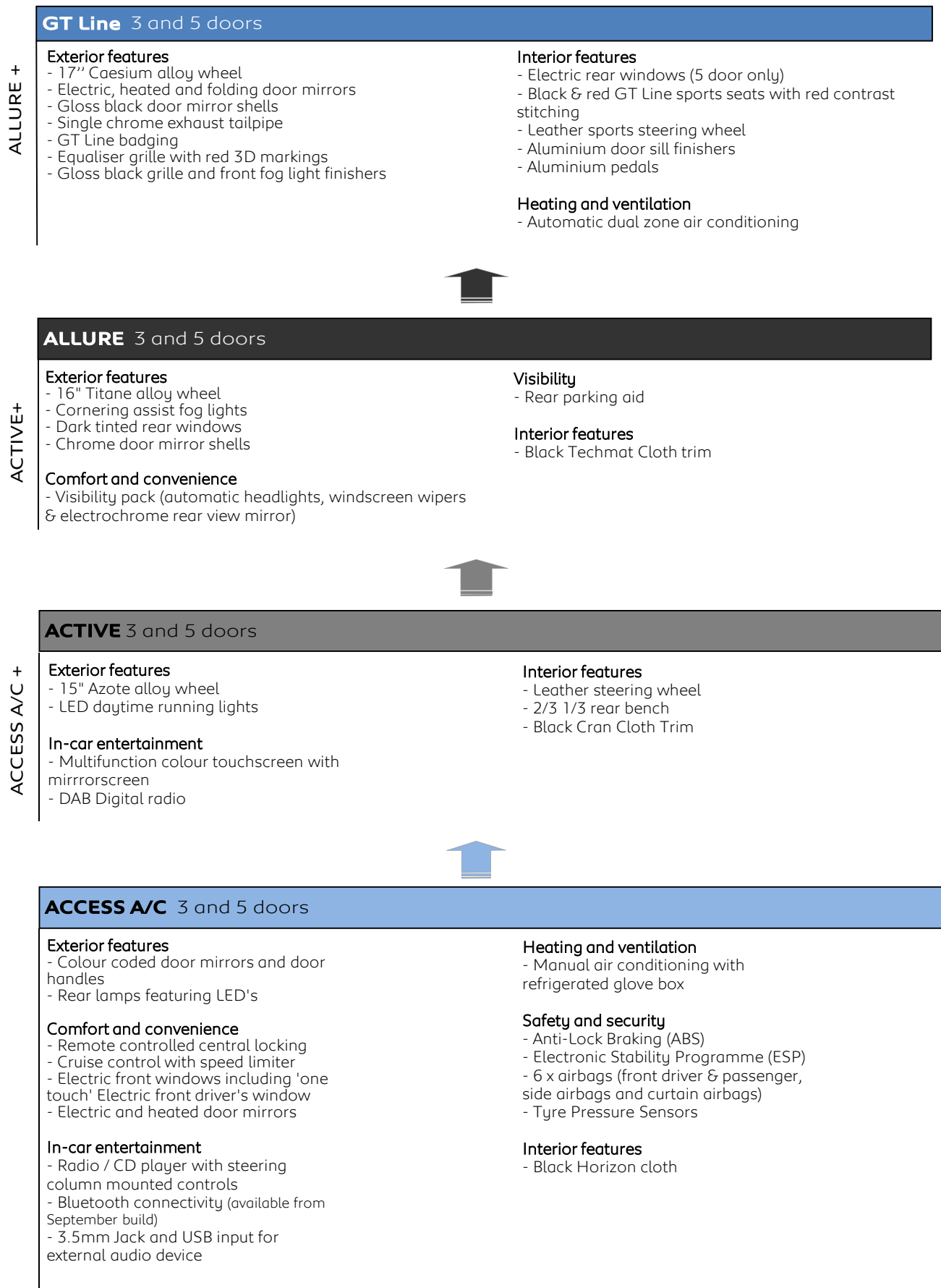
1-litre to 1,4-litre  
PSA Peugeot Citroën  
1.2-litre three-cylinder turbo

PRICES, EQUIPMENT AND  
TECHNICAL SPECIFICATIONS

1st September 2015 - Version 5

Model Year 2015.5

# 1.1 CHOOSE YOUR LEVEL



# 1.2 CHOOSE YOUR LEVEL

## GTi by Peugeot Sport - 3 doors ONLY

Post factory transformation by Peugeot Sport

### Exterior features

- 18" Lithium matt black alloy wheel
- Matt black door mirrors
- Unique 'GTi' grille with chequered flag design and matt black grille surround
- Matt black wheel arch extensions
- Double chrome exhaust tailpipe - round
- Exterior GTi by Peugeot Sport badging
- Red front brake callipers branded with Peugeot Sport
- Grey rear brake callipers
- Front & rear track both 6mm wider
- Lowered by 10mm vs standard GTi
- Torsen differential (as per RCZ R)
- Specific shock absorbers / springs / wheel alignment

### Interior features

- Sports seats finished in Alcantara with contrast red stitching
- branded with Peugeot Sport
- Specific GTi by Peugeot Sport carpet mats

### Safety and security

- Tyre inflation kit in lieu of spare wheel

## GTi Prestige - 3 doors ONLY

### Exterior features

- 17" Carbone onyx black alloy wheel

### In-car entertainment

- Satellite navigation (including 5 years European mapping updates)

### Visibility

- Cornering assist fog lights

### Interior features

- Heated seats
- Cielo panoramic glass roof with ambient lighting

## GTi - 3 doors ONLY

### Exterior features

- 17" Carbone technical grey alloy wheel
- Unique 'GTi' grille with chequered flag design with piano black with chrome inserts
- Sports rear spoiler
- Double chrome exhaust tailpipe
- Chrome door mirrors
- Exterior GTi badging
- Body coloured wheel arch extensions

### Safety and security

- Alarm

### Visibility

- Rear parking aid
- Cornering assist fog lights

### Interior features

- Leather steering wheel & gearnob
- Sports seats finished in full grain black half leather and caro cloth, embossed with GTi logo
- Red LED instrument dial surround
- Red Peugeot lettering on aluminium door sills

# 2.1 CHOOSE YOUR VERSION

Manufacturer's recommended retail prices Peugeot 208 Hatch 3 door price list

	ENGINE	HP	VERSION TITRE CODE (DIALOG description)	CO <sub>2</sub> g/km	BASIC MRRP	VAT (£)	TOTAL MRRP	P11D VALUE	2015/16 BIK %	ON THE ROAD MRRP
<b>ACCESS A/C</b>	1.0L PureTech 68	68	1PIAA3FKR5T0LRE0 (208 ACC A/C PT68 3DR)	102	9,149.17	1,829.83	10,979.00	11,640.00	15	<b>11,695.00</b>
	1.6L BlueHDi 75	75	1PIAA3FKM5T0LRE0 (208 ACC A/C BHD175 3DR)	90	10,940.83	2,188.17	13,129.00	13,790.00	16	<b>13,845.00</b>
<b>ACTIVE</b>	1.0L PureTech 68	68	1PIAA3LKR5T0A0E0 (208 ACT PT68 3DR)	102	9,815.83	1,963.17	11,779.00	12,440.00	15	<b>12,495.00</b>
	1.2L PureTech 82	82	1PIAA3LKQ5T0A0E0 (208 ACT PT82 3DR)	104	10,232.50	2,046.50	12,279.00	12,940.00	15	<b>12,995.00</b>
	1.2L PureTech 82 ETG5 S&S	82	1PIAA3LKQVTOA0E0 (208 ACT PT82 ETG 3DR)	97	10,920.00	2,184.00	13,104.00	13,765.00	14	<b>13,820.00</b>
	1.6L BlueHDi 75	75	1PIAA3LKM5T0A0E0 (208 ACT BHD175 3DR)	90	11,607.50	2,321.50	13,929.00	14,590.00	16	<b>14,645.00</b>
	1.6L BlueHDi 75 S&S	75	1PIAA3LKMJTOA0E0 (208 ACT BHD175 3DR SS)	79	11,774.17	2,354.83	14,129.00	14,790.00	16	<b>14,845.00</b>
<b>ALLURE</b>	1.2L PureTech 82	82	1PIAA3HKQ5T0A0E0 (208 ALL PT82 3DR)	104	11,232.50	2,246.50	13,479.00	14,140.00	15	<b>14,195.00</b>
	1.2L PureTech 82 ETG5 S&S	82	1PIAA3HKQVTOA0E0 (208 ALL PT82 ETG 3DR)	97	11,920.00	2,384.00	14,304.00	14,965.00	14	<b>15,020.00</b>
	1.2L PureTech 110 S&S	110	1PIAA3HCQJTOA0E0 (208 ALL PT110 3DR)	103	12,315.83	2,463.17	14,779.00	15,440.00	15	<b>15,495.00</b>
	1.2L PureTech 110 EAT6 S&S	110	1PIAA3HCQQT0A0E0 (208 ALL PT110A 3DR)	104	13,149.17	2,629.83	15,779.00	16,440.00	15	<b>16,495.00</b>
	1.6L BlueHDi 75	75	1PIAA3HKM5T0A0E0 (208 ALL BHD175 3DR)	90	12,607.50	2,521.50	15,129.00	15,790.00	16	<b>15,845.00</b>
	1.6L BlueHDi 75 S&S	75	1PIAA3HKMJTOA0E0 (208 ALL BHD175 3DR SS)	79	12,774.17	2,554.83	15,329.00	15,990.00	16	<b>16,045.00</b>
	1.6L BlueHDi 100 S&S	100	1PIAA3HKEJTOA0E0 (208 ALL BHD1100 3DR)	87	13,107.50	2,621.50	15,729.00	16,390.00	16	<b>16,445.00</b>
<b>GT LINE</b>	1.2L PureTech 110 S&S	110	1PIAA3TCQJTOA0E0 (208 GTL PT110 3DR)	103	12,815.83	2,563.17	15,379.00	16,040.00	15	<b>16,095.00</b>
	1.2L PureTech 110 EAT6 S&S	110	1PIAA3TCQQT0A0E0 (208 GTL PT110A 3DR)	104	13,649.17	2,729.83	16,379.00	17,040.00	15	<b>17,095.00</b>
	1.6L BlueHDi 100 S&S	100	1PIAA3TKEJTOA0E0 (208 GTL BHD1100 3DR)	87	13,607.50	2,721.50	16,329.00	16,990.00	16	<b>17,045.00</b>
	1.6L BlueHDi 120 S&S	120	1PIAA3TKDKTOA0E0 (208 GTL BHD1120 3DR)	94	14,107.50	2,821.50	16,929.00	17,590.00	16	<b>17,645.00</b>
<b>GTi</b>	1.6L THP 208 S&S	208	1PIAA3WKJTOA0E0 (208 GTi THP208)	125	15,357.50	3,071.50	18,429.00	19,090.00	20	<b>19,145.00</b>
<b>GTi Prestige</b>	1.6L THP 208 S&S	208	1PIAA3WKJTO9SE0 (208 GTi PRESTIGE THP208)	125	16,065.83	3,213.17	19,279.00	19,940.00	20	<b>19,995.00</b>
<b>GTi by Peugeot Sport</b>	1.6L THP 208 S&S	208	1PIAA3WKJKT002E0 (208 GTi 30)	125	17,732.50	3,546.50	21,279.00	21,940.00	20	<b>21,995.00</b>

3 DOOR

# 2.1 CHOOSE YOUR VERSION

Manufacturer's recommended retail prices Peugeot 208 Hatch 5 door price list

		ENGINE	HP	VERSION TITRE CODE (DIALOG description)	CO <sub>2</sub> g/km	BASIC MRRP	VAT (€)	TOTAL MRRP	P11D VALUE	2015/16 BIK %	ON THE ROAD MRRP
5 DOOR	ACCESS A/C	1.0L PureTech 68	68	1PIAA5FKR5T0LRE0 (208 ACC A/C PT68 5DR)	102	9,649.17	1,929.83	11,579.00	12,240.00	15	12,295.00
		1.6L BlueHDi 75	75	1PIAA5FKM5T0LRE0 (208 ACC A/C BHD175 5D)	90	11,440.83	2,288.17	13,729.00	14,390.00	16	14,445.00
	ACTIVE	1.0L PureTech 68	68	1PIAA5LKR5T0A0E0 (208 ACT PT68 5DR)	102	10,315.83	2,063.17	12,379.00	13,040.00	15	13,095.00
		1.2L PureTech 82	82	1PIAA5LKQ5T0A0E0 (208 ACT PT82 5DR)	104	10,732.50	2,146.50	12,879.00	13,540.00	15	13,595.00
		1.2L PureTech 82 ETG5 S&S	82	1PIAA5LKQVTOA0E0 (208 ACT PT82 ETG 5DR)	97	11,420.00	2,284.00	13,704.00	14,365.00	14	14,420.00
		1.6L BlueHDi 75	75	1PIAA5LKM5T0A0E0 (208 ACT BHD175 5DR)	90	12,107.50	2,421.50	14,529.00	15,190.00	16	15,245.00
		1.6L BlueHDi 75 S&S	75	1PIAA5LKMJTOA0E0 (208 ACT BHD175 5DR SS)	79	12,274.17	2,454.83	14,729.00	15,390.00	16	15,445.00
	ALLURE	1.2L PureTech 82	82	1PIAA5HKQ5T0A0E0 (208 ALL PT82 5DR)	104	11,732.50	2,346.50	14,079.00	14,740.00	15	14,795.00
		1.2L PureTech 82 ETG5 S&S	82	1PIAA5HKQVTOA0E0 (208 ALL PT82 ETG 5DR)	97	12,420.00	2,484.00	14,904.00	15,565.00	14	15,620.00
		1.2L PureTech 110 S&S	110	1PIAA5HCQJTOA0E0 (208 ALL PT110 5DR)	103	12,815.83	2,563.17	15,379.00	16,040.00	15	16,095.00
		1.2L PureTech 110 EAT6 S&S	110	1PIAA5HCQQT0A0E0 (208 ALL PT110A 5DR)	104	13,649.17	2,729.83	16,379.00	17,040.00	15	17,095.00
		1.6L BlueHDi 75	75	1PIAA5HKM5T0A0E0 (208 ALL BHD175 5DR)	90	13,107.50	2,621.50	15,729.00	16,390.00	16	16,445.00
		1.6L BlueHDi 75 S&S	75	1PIAA5HKMJTOA0E0 (208 ALL BHD175 5DR SS)	79	13,274.17	2,654.83	15,929.00	16,590.00	16	16,645.00
		1.6L BlueHDi 100 S&S	100	1PIAA5HKEJTOA0E0 (208 ALL BHD1100 5DR)	87	13,607.50	2,721.50	16,329.00	16,990.00	16	17,045.00
	GT LINE	1.2L PureTech 110 S&S	110	1PIAA5TCQJTOA0E0 (208 GTL PT110 5DR)	103	13,315.83	2,663.17	15,979.00	16,640.00	15	16,695.00
		1.2L PureTech 110 EAT6 S&S	110	1PIAA5TCQQT0A0E0 (208 GTL PT110A 5DR)	104	14,149.17	2,829.83	16,979.00	17,640.00	15	17,695.00
1.6L BlueHDi 100 S&S		100	1PIAA5TKEJTOA0E0 (208 GTL BHD1100 5DR)	87	14,107.50	2,821.50	16,929.00	17,590.00	16	17,645.00	
1.6L BlueHDi 120 S&S		120	1PIAA5TKDKTOA0E0 (208 GTL BHD1120 5DR)	94	14,607.50	2,921.50	17,529.00	18,190.00	16	18,245.00	

### 3. TECHNOLOGY PAGE

#### PureTech Petrol Engines

Designed for drivability and performance, PureTech Petrol engines combine efficiency with cutting-edge technology.

They take the best that the market has to offer and find the perfect balance between torque and power at low revs. This advance in technology generates savings in fuel consumption and reduces CO<sub>2</sub> emissions compared to a vehicle with equivalent power and torque.

Combined with the new automatic EAT6 gearbox, the 1.2 PureTech 110 EAT6 S&S turbo version emits CO<sub>2</sub> emissions of only 104 g/km, making it the benchmark for automatic petrol engines in the segment.

The New 208's 1.2L PureTech 110 engine was awarded 'International Engine of the Year 2015' in the 1.0L to 1.4L category by a panel of 65 industry experts.



#### Reversing Camera / Rear Parking Aid / Park Assist

The reversing camera automatically activates when you select reverse gear and lets you view the area behind the car as you manoeuvre. It comes with rear parking aid as standard but can also be ordered with Park Assist for added safety and convenience.

The Park Assist system assesses the space available to ensure that your car will fit. Ultrasonic sensors and steering management take over to manoeuvre in and out of the parking space for you.

Acceleration, braking, gear changes and use of the clutch in a manual transmission are left in your control. As you manoeuvre, the system gives you visual and audio information to ensure your safety.



#### Peugeot Connect SOS & Assistance

Peugeot Connect SOS is now in use in most major European countries, including the UK, and is technology that could prove vital in an emergency.

**Automatic emergency call:** if the airbags inflate or the seat belt pretensioners are triggered, the vehicle automatically makes an emergency call on behalf of the driver. Peugeot Connect SOS then locates the vehicle, establishes telephone communication with its occupants and arranges for the appropriate emergency service to be dispatched.

**Manual emergency call:** whether the victim or the witness of an emergency situation, the driver can call Peugeot Connect SOS quickly by pressing the SOS button located on the dashboard (and holding for 3 seconds).



#### BlueHDi Diesel Engines

BlueHDi engines combine high performance, impressive fuel economy and low CO<sub>2</sub> emissions.

Every diesel version of the New Peugeot 208 emits under 95 g/km of CO<sub>2</sub> and achieves up to 94.2 mpg on a combined drive cycle.

This market-leading range of 1.6 BlueHDi diesel engines is also available with Stop & Start technology.



#### Active City Brake

Active City Brake is a new technology which makes it possible to avoid an accident or reduce its severity if the driver fails to react.

It works in urban conditions at speeds of less than 20 mph. A short range sensor is fitted to the top of the windscreen and can detect other vehicles that are driving in the same direction or stationary.

This will automatically trigger an emergency brake to stop the vehicle and avoid a collision entirely or limit the consequences of an accident by reducing the speed of impact.



#### 7" Touchscreen & Satellite Navigation



Perfectly positioned, the 7" touch screen gives you access to a wide range of functions, including music streaming, USB connectivity and hands-free Bluetooth calling.

Plus, the interactive and easy to use Satellite Navigation system will take the stress out of any journey\*.

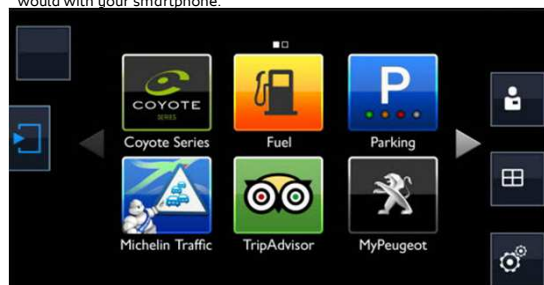
\*Standard, optional or unavailable according to version.

#### Peugeot Connect Apps

In New 208 models with a touch screen (Active and above), you have the option to purchase a Peugeot Connect Apps USB key, which houses 3G connectivity, a GPS receiver and storage for the built in software interface and applications (apps).

Simply insert the key into the USB socket in your car. Peugeot Connect Apps is accessed and controlled via the Connected Services menu on your car's touch screen.

The apps, including driving aids and live traffic, parking and POI information, are accessed by simply touching the corresponding icon - exactly as you would with your smartphone.





# 4.1 CHOOSE YOUR OPTIONS

			ACCESS A/C	ACTIVE	ALLURE	GT LINE	GTI	GTI Prestige	GTI by Peugeot Sport	Basic RRP £ Excluding VAT	VAT @ 20%	Total RRP £ Including VAT
Paint	Bianca White (Solid paint)	WPP0	○	○	○	○	●	●		208.33	41.67	<b>250.00</b>
	Metallic Paint	OMM0	○	○	○	○	○	○	●	412.50	82.50	<b>495.00</b>
	Pearlescent Paint	OMM6			○	○	○	○		537.50	107.50	<b>645.00</b>
	Pearlescent Paint	OMM6							○	125.00	25.00	<b>150.00</b>
	Textured Paint	OMM7		○	○	○	○	○		537.50	107.50	<b>645.00</b>
	Textured Paint	OMM7							○	125.00	25.00	<b>150.00</b>
	Coupe Franche	M29V							○	787.50	157.50	<b>945.00</b>
Personalisation	16" 'Titane' alloy wheel upgrade ZH45 - Petrol / ZH44 - Diesel <b>(Not available on ETG and 1.0L)</b>	ZH45 / ZH44		○						166.67	33.33	<b>200.00</b>
	16" 'Titane' alloy wheel personalisation: Technical Grey ZHAI - Petrol / ZHAJ - Diesel	ZHAI / ZHAJ			○					83.33	16.67	<b>100.00</b>
	16" 'Titane' alloy wheel personalisation: Matt Black ZHAL - Petrol / ZHAM - Diesel	ZHAL / ZHAM			○					83.33	16.67	<b>100.00</b>
	16" 'Titane' alloy wheel personalisation: Gloss Black with white laser engraving ZHAO - Petrol / ZHAP - Diesel	ZHAO / ZHAP			○					83.33	16.67	<b>100.00</b>
	17" 'Oxygen' alloy wheel upgrade ZH1B - Petrol / ZH5G - Diesel <b>(Not available on 1.2 PureTech 82 manual and ETG or Allure BlueHdi 75 S&amp;S 5dr)</b>	ZH1B / ZH5G			○					208.33	41.67	<b>250.00</b>
	17" 'Carbone' alloy wheel personalisation: Onyx Black	ZH3U					○	●		83.33	16.67	<b>100.00</b>
	17" 'Carbone' alloy wheel personalisation: Aluminium	ZHAT					○			83.33	16.67	<b>100.00</b>
	Menthol White personalisation - Exterior Pack	PDCM		○						183.33	36.67	<b>220.00</b>
	Menthol White personalisation - Exterior Pack	PDCM			○					125.00	25.00	<b>150.00</b>
	Menthol White personalisation - Interior Pack <b>(includes passenger seat height adjustment)</b>	OOFN		○						358.33	71.67	<b>430.00</b>
	Menthol White personalisation - Interior Pack <b>(includes passenger seat height adjustment)</b>	OOFN			○					291.67	58.33	<b>350.00</b>
	Lime Yellow personalisation - Exterior Pack	PDCN		○						183.33	36.67	<b>220.00</b>
	Lime Yellow personalisation - Exterior Pack	PDCN			○					125.00	25.00	<b>150.00</b>
	Lime Yellow personalisation - Interior Pack <b>(includes passenger seat height adjustment)</b>	OPFY		○						358.33	71.67	<b>430.00</b>
	Lime Yellow personalisation - Interior Pack <b>(includes passenger seat height adjustment)</b>	OPFY			○					291.67	58.33	<b>350.00</b>
	Roof & bonnet transfers - Daimiers Not compatible with textured paints	XI42					○	○		208.33	41.67	<b>250.00</b>

● Standard    ○ Option at extra cost

## 4.2 CHOOSE YOUR OPTIONS

ACCESS A/C	ACTIVE	ALLURE	GT LINE	GTI	GTI Prestige	GTI by Peugeot Sport	Basic RRP £ Excluding VAT	VAT @ 20%	Total RRP £ Including VAT
------------	--------	--------	---------	-----	--------------	----------------------	------------------------------	-----------	------------------------------

			ACCESS A/C	ACTIVE	ALLURE	GT LINE	GTI	GTI Prestige	GTI by Peugeot Sport	Basic RRP £ Excluding VAT	VAT @ 20%	Total RRP £ Including VAT
Options	Electric Folding Door mirrors	HU02		○	○	●	●	●	●	83.33	16.67	100.00
	Electric Pack: rear electric windows + electric folding door mirrors (5 door only)	LE05			○	●				133.33	26.67	160.00
	Automatic dual zone air conditioning	RE07			○	●	●	●	●	241.67	48.33	290.00
	Visibility pack: Automatic Lights and wiper with Electrochrome rear view mirror	WV33		○	●	●	●	●	●	150.00	30.00	180.00
	Active City Brake - includes Visibility Pack (automatic lights and wipers with electrochrome rear view mirror)	D401		○						358.33	71.67	430.00
	Active City Brake	D401			○	○	○		○	208.33	41.67	250.00
	Front central armrest with storage	JB01		○	○	○	○	○		58.33	11.67	70.00
	Alarm	AB08	○	○	○	○	●	●	●	175.00	35.00	210.00
	Front fog lights	PR01		○	●	●	●	●	●	58.33	11.67	70.00
	Cielo Panoramic Glass Roof	OK01			○	○	○	●		333.33	66.67	400.00
	Rear Parking Aid	UB01		○	●	●	●	●	●	225.00	45.00	270.00
	Reversing Camera - includes Rear Parking Aid	UB09		○						391.67	78.33	470.00
	Reversing Camera	UB09			○	○	○		○	166.67	33.33	200.00
	Park Assist (automatic parallel parking system) - includes front & rear parking aid	UB08			○	○	○			250.00	50.00	300.00
Park Assist and Reversing Camera - not available with exterior personalisation	UB10			○	○	○			416.67	83.33	500.00	
IN CAR ENTERTAINMENT	Single CD unit - Dealer Fit ONLY			○	○	○	○	○	○	199.99	40.00	239.99
	Peugeot Connect Apps V1 - Dealer Fit ONLY ( <i>£199.00 is an introductory price, normal price £279.00</i> ) - only compatible with vehicles that do not have Sat Nav			○	○	○	○		○	165.83	33.17	199.00
	Peugeot Connect Apps V2 - Dealer Fit ONLY - only compatible with vehicles equipped with Sat Nav			○	○	○	○	○	○	249.17	49.83	299.00
	Satellite Navigation (including 5 years European mapping updates) with DAB digital radio	WL3S		○	○	○	○	●	○	375.00	75.00	450.00
	Peugeot Connect SOS and Assistance with DAB digital radio (non Sat Nav version)	WL3P		○	○	○	○		○	208.33	41.67	250.00
	Peugeot Connect SOS and Assistance with DAB digital radio (Sat Nav std - including 5 years European mapping updates)	WL3V						○		250.00	50.00	300.00
	Satellite Navigation (including 5 years European mapping updates) and Peugeot Connect SOS and Assistance with DAB digital radio	WL3V		○	○	○	○		○	583.33	116.67	700.00
INTERIOR TRIM	Midnight Black Leather Trim (Includes heated seats, passenger seat height adjustment, electrically operated and heated door mirrors with electric folding mirrors, rear electric windows (5 door only), aluminium effect on door sills and front central armrest with storage)	3UFX	Allure						925.00	185.00	1,110.00	

● Standard ○ Option at extra cost



# 5.1 KNOW YOUR EQUIPMENT

		ACCESS A/C	ACTIVE	ALLURE	GT LINE	GTi	GTi Prestige	GTi by Peugeot Sport	Notes
SAFETY & SECURITY	ESP with Hill Assist	●	●	●					Only available on ETG and Automatic versions
	Speed Alarm / Speed Limiter	●	●	●	●	●	●	●	
	ABS with Electronic Brake Force Distributor (EBFD) & Emergency Brake Assist (EBA)	●	●	●	●	●	●	●	
	Automatic Hazard Light Activation	●	●	●	●	●	●	●	
	Child Safety door locking	●	●	●	●	●	●	●	
	ESP	●	●	●	●	●	●	●	Can be deactivated on GTi
	Seatbelt alarm	●	●	●	●	●	●	●	
	Driver and Passenger airbag with Passenger airbag deactivation switch	●	●	●	●	●	●	●	
	Front side airbags	●	●	●	●	●	●	●	
	Front and rear curtain airbags	●	●	●	●	●	●	●	
	Thatcham approved Cat 2 immobiliser	●	●	●	●	●	●	●	
	Rear seat 3 point ISOFIX location mounts x 2	●	●	●	●	●	●	●	
	3 x 3-point rear seat belts	●	●	●	●	●	●	●	
	Tyre inflation kit							●	
Space saver spare wheel	●	●	●	●				BlueHDi engines ONLY	
Full size spare wheel	●	●	●	●				Petrol engines ONLY	
Deadlocking	●	●	●	●	●	●	●		
Tyre pressure sensors	●	●	●	●	●	●	●		
Ultrasonic alarm	○	○	○	○	●	●	●		
COMFORT & CONVENIENCE	Electric Rear Windows			○	●				Linked to leather upgrade & Electric pack on Allure
	Tinted rear and rear side windows			●	●	●	●	●	
	Rear parking aid		○	●	●	●	●	●	
	Park Assist (automatic parallel parking system)			○	○	○			
	Visibility Pack - Auto headlights, Auto wipers and electrochrome rear view mirror			●	●	●	●	●	
	Cruise control	●	●	●	●	●	●	●	Linked to speed alarm / speed limiter
	Electrically assisted power steering	●	●	●	●	●	●	●	
	Height and reach adjustable steering wheel	●	●	●	●	●	●	●	
	Electric front windows	●	●	●	●	●	●	●	
	'One touch' Electric front driver's window	●	●	●	●	●	●	●	
12v power socket	●	●	●	●	●	●	●		
Remote control central locking	●	●	●	●	●	●	●		
IN CAR ENTERTAINMENT	Radio / CD Player	●							
	Multifunction colour Touch Screen (7" touchscreen) with Mirrorscreen		●	●	●	●	●	●	Mirror Screen compatible phones - Samsung Galaxy S5 Samsung Galaxy Note 4 Samsung Galaxy Note Edge HTC One (M8) HTC Eye HTC 820 HTC 620
	External CD player upgrade - Dealer fit ONLY		○	○	○	○	○	○	
	Peugeot Connect Apps - Dealer fit ONLY		○	○	○	○	○	○	
	DAB digital radio upgrade		●	●	●	●	●	●	
	Bluetooth	●	●	●	●	●	●	●	Only available from September build on Access A/C
	Satellite Navigation (including 5 years European mapping updates)		○	○	○	○	●	○	
	Peugeot Connect SOS and Assistance	○	○	○	○	○		○	
	Steering column remote controls	●							
	Steering wheel mounted controls		●	●	●	●	●	●	
	3.5mm jack for external audio device	●							
USB socket		●	●	●	●	●	●		
2 front speakers plus 2 tweeters	●								
2 front and 2 rear speakers plus 2 tweeters		●	●	●	●	●	●		
HEATING & VENTILATION	Manual air conditioning with glove box vent	●	●	●					
	Automatic Dual Zone Air Conditioning			○	●	●	●	●	
KEY INSTRUMENTS	Instrument panel LCD screen display	White			Colour				
	LED instrument dial surround				Red	Red	Red		
	Large multifunction (7") colour Touch Screen		●	●	●	●	●	●	
	External temperature gauge	●	●	●	●	●	●	●	
	Gear shift indicator	●	●	●	●				
	Trip computer	●	●	●	●	●	●	●	

● Standard ○ Option at extra cost

# 5.2 KNOW YOUR EQUIPMENT

		ACCESS A/C	ACTIVE	ALLURE	GT LINE	GTI	GTi Prestige	GTi by Peugeot Sport	Notes
INTERIOR FEATURES / SEATING	Leather trimmed steering wheel		●	●	●	●	●	●	
	Cielo roof with ambient lighting			○	○	○	●	●	
	Passenger and driver sunvisors with vanity mirrors	●	●	●	●	●	●	●	
	Leather and chrome gear knob			●	●	●	●	●	
	Aluminium effect on sills			○	●	●	●	●	Sills linked to leather option on Allure
	Aluminium effect on pedals				●	●	●	●	
	Cloth interior trim	●	●	●					
	Sports seats with Midnight Black full leather interior			○					
	Sports seats with GT Line trim				●				
	Sport seats with full grain black half leather and caro cloth with red side panels and contrast stitching					●	●		
Sports seats finished in Alcantara with contrast red stitching – branded with Peugeot Sport							●		
EXTERIOR FEATURES / WHEELS	Rear Sports Spoiler - Colour coded					●	●	●	
	Metallic paint	○	○	○	○	○	○	●	
	Solid Paint	●	●	●	●	●	●		
	Textured paint		○	○	○	○	○	○	
	Pearlescent Paint			○	○	○	○	○	
	Coupe Franche Paint							○	
	Colour coded door mirrors	●	●					●	GTi by PSP ONLY colour coded if Rioja Red, Satin White or Nera Black
	Chrome door mirrors		○	●		●	●		Linked to textured paint on Active
	Black door mirrors				●			●	
	Body coloured wheel arch extensions					●	●		
	Black wheel arch extensions							●	
	Single chrome exhaust tailpipe				●				
	Double chrome exhaust tailpipe					●	●	●	
Steel wheel with wheel trims	●							See page 5.2	
Alloy wheels		●	●	●	●	●	●	See page 5.2	
Alloy wheels Personalisation			○		○	●		See page 5.2	
LIGHTING & VISIBILITY	Daytime Running Lights	●							
	LED Daytime Running lights		●	●	●	●	●	●	
	Static fog lights		○						
	Cornering assist fog lights			●	●	●	●	●	
	LED Indicators					●	●	●	
	Rear 'Boomerang' effect LED lights	●	●	●	●	●	●	●	
	Rear fog light	●	●	●	●	●	●	●	
	LED interior lights with Illuminated footwell			●	●	●	●	●	
	'Follow me home' lighting	●	●	●	●	●	●	●	
	Electrically operated and heated door mirrors	●	●	●					
	Electrically operated and heated door mirrors with electric folding operation			○	●	●	●	●	Linked to leather option & Electric pack on Allure
Rear wash wipe	●	●	●	●	●	●	●		
SEATING	Mono rear bench	●							
	2/3 1/3 rear bench		●	●	●	●	●	●	
	Driver seat height adjustment	●	●	●	●	●	●	●	
	Passenger seat height adjustment		○	○	●	●	●	●	Linked to interior personalisation and leather option on Active and Allure
	Rear head restraints x 3	●	●	●	●	●	●	●	
	Heated seats			○			●		Linked to leather upgrade on Allure
	Front central armrest with storage		○	○	○	○			Linked to leather upgrade on Allure

● Standard ○ Option at extra cost

# 6.1 COLOURS AND TRIMS

● = Standard at no cost ○ = Option at extra cost

Body type	Specification level	Interior description	Trim code	Primary / secondary colour	Primary / secondary Material	SOLID COLOUR		PEARLESCENT COLOUR (Cost Option)	METALLIC COLOURS (Cost Option)							TEXTURED COLOURS (Cost Option)		TWO TONE (Cost Option)	
						Hurricane Grey P09G	Bianca White (Cost Option) POWP	Satin White M6FC	Nera Black M09V	Orange Power M04T	Virtual Blue M0K4	Shark Grey M09P	Aluminium M0ZR	Rioja Red MOPY	Twilight Blue MOKU	Ice Grey M7JD	Ice Silver M7WW	Coupe Franche M29V	
3 & 5 Doors	<b>ACCESS A/C</b>	Black Horizon Trim	7AFX	Black	Cloth	●	○												
3 & 5 Doors	<b>ACTIVE</b>	Black Cran Trim	4OFX	Black	Cloth	●	○												
		Menthol White interior personalisation	0OFN	Grey	Premium trim	○	○												
		Lime Yellow interior personalisation	0PFY	Grey	Premium trim	○	○												
3 & 5 Doors	<b>ALLURE</b>	Black Techmat Trim	0LFX	Black	Cloth	●	○												
		Menthol White interior personalisation	0OFN	Grey	Premium trim	○	○												
		Lime Yellow interior personalisation	0PFY	Grey	Premium trim	○	○												
		Midnight Black Leather Trim (Optional)	3UFX	Black	Leather	○	○												
3 & 5 Doors	<b>GT LINE</b>	GT Line Trim	0NFS	Black / Red	Cloth / TEP	●	○												
3 Doors	<b>GTI &amp; GTI Prestige</b>	Full grain black half leather and coro cloth trim	21FS	Black / Red	Cloth / Leather		●												
3 Doors	<b>GTI by PSP</b>	Black Alcantara Trim branded Peugeot Sport	0JFS	Black / Red	Alcantara			○	●					●				○	

## EXTERIOR PERSONALISATION

Body type	Specification level	Interior description	Trim code	Primary / secondary colour	Primary / secondary Material	Hurricane Grey P09G	Bianca White (Cost Option) POWP	Satin White M6FC	Nera Black M09V	Orange Power M04T	Virtual Blue M0K4	Shark Grey M09P	Aluminium M0ZR	Rioja Red MOPY	Twilight Blue MOKU	Ice Grey M7JD	Ice Silver M7WW	Coupe Franche M29V	
3 & 5 Doors	<b>ACTIVE &amp; ALLURE</b>	Menthol White exterior personalisation	PDCM	N/A	N/A	○	○												
		Lime Yellow exterior personalisation	PDCN	N/A	N/A	○	○												

## COLOURS



Hurricane Grey



Bianca White



Satin White



Nera Black



Orange Power



Virtual Blue



Shark Grey



Aluminium



Rioja Red



Twilight Blue



Ice Grey



Ice Silver



Coupe Franche

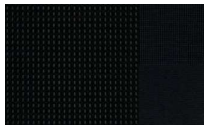
## TRIMS



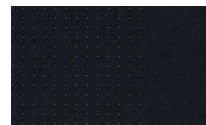
Black Horizon Trim



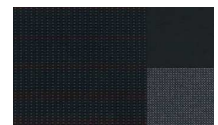
Black Cran Trim



Black Techmat Trim



Midnight Black Leather Trim



GT Line Trim



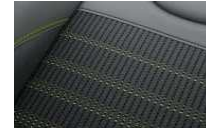
GTI & GTI Prestige



GTI by Peugeot Sport



Menthol White Premium Trim



Lime Yellow Premium Trim

## PERSONALISATION



### Exterior personalisation:

- Equaliser grille with stamped 3D effect
- Gloss black grille finisher
- Gloss black front fog lamp finishers with laser engraved colour accent
- Coloured Peugeot lettering front and rear
- Gloss black door mirror shells with colour accents

### Interior personalisation:

- Sports seats with contrast stitching
- Coloured front and rear door handles with coloured laser engraving at the front
- Grained dashboard moulding
- Satin chrome air vent finishers
- Full grain leather steering wheel and gear level gaiter with contrast stitching
- Passenger seat height adjustment



# 6.2 CHOOSE YOUR WHEELS

## 6.2.1 ALLOYS AND WHEEL TRIMS

	ACCESS A/C	ACTIVE	ALLURE	GT LINE	GTi	GTi Prestige	GTi by Peugeot Sport
<b>Full size spare wheel - Petrol versions ONLY</b>	•	•	•	•	•	•	
<b>Space saver spare wheel - BlueHDi versions ONLY</b>	•	•	•	•			
<b>Tyre inflation kit</b>							•
<b>15" Steel Wheel with 'Niobium' wheel trim</b> ZH39 - Full size spare ZH38 - Space saver	•						
<b>15" 'Azote' Alloy Wheel</b> ZH75 - Full size spare ZH65 - Space saver		•					
<b>16" 'Titane' Alloy Wheel</b> (Except 1.0L PureTech 68 on Active) ZH45 - Full size spare ZH44 - Space saver		○	•				
<b>16" 'Titane' Technical Grey Alloy Wheel</b> ZHAI - Full size spare ZHAIJ - Space saver			○				
<b>16" 'Titane' Matt Black Alloy Wheel</b> ZHAL - Full size spare ZHAM - Space saver			○				
<b>16" 'Titane' Gloss Black Alloy Wheel with white laser engraving</b> ZHAO - Full size spare ZHAP - Space saver			○				
<b>17" 'Oxygen' Alloy Wheel</b> ZH1B - Full size spare ZH5G - Space saver			○				
<b>17" 'Caesium' Alloy Wheel</b> ZHAQ - Full size spare ZHAR - Space saver				•			
<b>17" 'Carbone' Technical Grey Alloy Wheel</b> ZH3Q - Full size spare					•		
<b>17" 'Carbone' Onyx Black Alloy Wheel</b> ZH3U - Full size spare					○	•	
<b>17" 'Carbone' Alloy Wheel: Aluminium</b> ZHAT - Full size spare					○		
<b>18" 'Lithium' Alloy Wheel</b> ZHAY - Tyre inflation kit							•



15" Steel Wheel with 'Niobium' wheel trim



15" 'Azote' Alloy Wheel



16" 'Titane' Alloy Wheel



16" 'Titane' Technical Grey Alloy Wheel



16" 'Titane' Matt Black Alloy Wheel



16" 'Titane' Gloss Black Alloy Wheel with white laser engraving



17" 'Oxygen' Alloy Wheel



17" 'Caesium' Alloy Wheel



17" 'Carbone' Technical Grey Alloy Wheel



17" 'Carbone' Onyx Black Alloy Wheel



17" 'Carbone' Alloy Wheel



18" 'Lithium' Alloy Wheel



## 7.2 KNOW EVERYTHING ABOUT YOUR 208 Diesel

		1.6 BlueHDi 75	1.6 BlueHDi 75 S&S	1.6 BlueHDi 100 S&S	1.6 BlueHDi 120 S&S				
DRIVETRAIN	Fuel type	Diesel	Diesel	Diesel	Diesel				
	Cubic capacity (cc)	1,560	1,560	1,560	1,560				
	Maximum power hp (Kw)	75 (55) @ 3500 rpm	75 (55) @ 3500 rpm	99 (73) @ 3750 rpm	120 (88) @ 3500 rpm				
	Maximum torque Nm	230 @ 1750 rpm	230 @ 1750 rpm	254 @ 1750 rpm	300 @ 1750 rpm				
	5 speed manual	●	●	●					
6 speed manual				●					
BRAKES	ESP	●	●	●	●				
	Front discs	●	●	●	●				
	Rear brakes	Drum	Drum	Disc	Disc				
TYRES	Tyres	185/65 R15 195/55 R16	185/65 R15 195/55 R16	185/65 R15 - 195/55 R16 - 205/45 R17					
	Tyre Size	15" or 16"	15" or 16"	15" or 16" or 17"					
	Suspension	Front: Pseudo Mc Pherson / rear: Cross deformable							
FUEL TANK	Capacity (litres)	50							
PERFORMANCE (driver only)	Maximum speed (mph)	106	106	116	118				
	Acceleration 0-62 mph (sec) 1000m standing start	34.9	34.9	32.3	31.1				
	Acceleration 0-62 mph (sec)	13.3	13.3	10.7	9.4				
FUEL CONSUMPTION EMISSIONS	Urban drive cycle MPG (litres/100km)	67.3	4.2	78.5	3.6	74.3	3.8	64.2	4.4
	Extra Urban drive cycle MPG (litres/100km)	94.2	3.0	104.6	2.7	88.3	3.2	88.3	3.2
	Combined drive cycle MPG (litres/100km)	80.7	3.5	94.2	3.0	83.1	3.4	78.5	3.6
	Carbon Dioxide (CO2) emissions (g/km)	90		79		87		94	
	Regulation Emission Standard	Euro 6		Euro 6		Euro 6		Euro 6	
VEHICLE WEIGHT INFORMATION (KG) 3 door / 5 door	Gross vehicle weight	1,635		1,635		1,680		1,684	
	Kerb weight (full tank)	1065 / 1075		1070 / 1080		1,090		1115 / 1125	
	Mass in service	1225 / 1235		1230 / 1240		1250 / 1265		1285 / 1295	
	Gross train weight	2,295		2,045		2,650		2,664	
	Maximum braked trailer weight	840		590		1,150		1,150	
	Maximum tow ball weight	46							
AERODYNAMICS	SCx (m <sup>2</sup> )	0.65		0.63		0.65		0.65	
DIMENSIONS	Overall length	3,973							
	Body including door handles / with door mirrors open	1,739 / 2,004							
	Ride height (full tank)	1460							
	Wheelbase	2538							
	Front overhang / Rear overhang	0.783 / 0.652							
	Front track / Rear Track	1,470 / 1,472							
	Total boot volume L - VDA	285 dm <sup>3</sup>							
TURNING CIRCLE (M)	Between walls	11.2			11.4				
	Between pavements	10.4			10.6				
INSURANCE GROUP	Access A/C	15E							
	Active	15E		TBC					
	Allure	15E		TBC		20D			
	GT Line					21D		23D	



## 7.3 KNOW EVERYTHING ABOUT YOUR 208 - Dimensions

### Exterior Dimensions (mm)

#### PEUGEOT 208

A



### Interior Dimensions (mm)

#### PEUGEOT 208

#### C PEUGEOT 208

B



	(mm)
A	720
B	874
B1	1675
C	611
D	882
E	818
F	861
G	478
H	230
I	447
J	697
J1	509
J2	1042
K	1408
L	1360
M	1380
N	1335

## 8. SERVICE CONTRACTS

Peugeot offer two levels of Service Contract:

### Peugeot Service Plan

**What's included:**

- > Peugeot Service Plans offer complete assurance that all your servicing costs will be completely covered for the duration of the plan
- > We offer Peugeot Service Plans for up to five years with many mileage options
- > One-off up front or monthly direct debit payment options available
- > All packages are affordable and inflation proof, which means they will remain at a fixed cost for the duration of the plan.

**Monthly price examples\*:**

3 Years / 35,000 Miles	4 Years / 45,000 Miles	5 Years / 55,000 Miles
12.99 per month	13.99 per month	13.99 per month

### Extended Peugeot Assistance\*

**What's included: Extension of your Peugeot Assistance Cover**

- > Offers you the opportunity to extend Peugeot Assistance up to a further two years
- > Cover includes:
  - Peugeot Assistance from Home
  - Peugeot Roadside Assistance
  - Peugeot Recovery
  - Peugeot Onward Travel
  - Peugeot European Cover

\* Excludes non-vehicle induced faults

To find out about extending your Peugeot Assistance cover, call **0800 294 0294**

For more information and terms & conditions please visit [www.servicing.peugeot.co.uk](http://www.servicing.peugeot.co.uk)

# FURTHER INFORMATION

## MANUFACTURERS RECOMMENDED RETAIL PRICE ON THE ROAD

The On the Road MRRP featured includes the following:

Tax band	CO2 (g/km)	First Year VED	Annual Tax	First Reg fee	Delivery Charge	VAT @ 20% on Delivery	Total OTR Costs
A	Up to 100	£0.00	£0.00	£55.00	£550.83	£110.17	<b>£716.00</b>
B	101-110	£0.00	£20.00	£55.00	£550.83	£110.17	<b>£716.00</b>
C	111-120	£0.00	£30.00	£55.00	£550.83	£110.17	<b>£716.00</b>
D	121-130	£0.00	£110.00	£55.00	£550.83	£110.17	<b>£716.00</b>
E	131-140	£130.00	£130.00	£55.00	£550.83	£110.17	<b>£846.00</b>
F	141-150	£145.00	£145.00	£55.00	£550.83	£110.17	<b>£861.00</b>
G	151-165	£180.00	£180.00	£55.00	£550.83	£110.17	<b>£896.00</b>
H	166-175	£295.00	£205.00	£55.00	£550.83	£110.17	<b>£1,011.00</b>
I	176-185	£350.00	£225.00	£55.00	£550.83	£110.17	<b>£1,066.00</b>
J	186-200	£490.00	£265.00	£55.00	£550.83	£110.17	<b>£1,206.00</b>
K	201-225	£640.00	£290.00	£55.00	£550.83	£110.17	<b>£1,356.00</b>
L	226-255	£870.00	£490.00	£55.00	£550.83	£110.17	<b>£1,586.00</b>
M	Over 255	£1,100.00	£505.00	£55.00	£550.83	£110.17	<b>£1,816.00</b>

VAT is calculated at 20%

VAT is not applicable to cars sold in the Channel Islands

## PEUGEOT 3 YEARS OF WARRANTY

All vehicles first registered in the UK and purchased from a UK Peugeot Dealer benefit from a Peugeot 2 year unlimited mileage manufacturer's warranty and a free optional additional 1 year of warranty provided by the Peugeot Dealer Network in the UK.

## PEUGEOT ASSISTANCE

All new Peugeots come with Peugeot Assistance, our breakdown assistance service.

Provided by the AA, Peugeot Assistance is available every minute of the day and night; 365 days of the year, for you and anyone else driving your Peugeot with your permission.

Full details are available at [www.peugeot.co.uk](http://www.peugeot.co.uk)

## TERMS AND CONDITIONS

Every endeavour has been made to ensure that the information, details and descriptions set out in this literature are correct, at the time of going to print.

It is our policy to continually improve our vehicles in every way. We reserve the right to modify our vehicles price, specification (including colour), equipment, accessories and characteristics or to discontinue any model, without notice, at any time.

To avoid any misunderstandings you are advised to check with your Peugeot Dealer the specification (including colour), equipment accessories and equipment relating to any Peugeot vehicle and the exact

Where a feature is described as an option in this publication it should be assumed that it is at extra cost unless specifically stated otherwise.

Issued by Sales and Marketing, Peugeot Motor Company PLC, Pinley House, Sunbeam Way, Coventry, CV3 1ND.

**For further information call Peugeot on 0845 200 1234 or visit our website at [www.peugeot.co.uk](http://www.peugeot.co.uk)**



**PEUGEOT**