

The new Caddy



Commercial
Vehicles



Experts in every field.

The new Caddy and Caddy Maxi.

Building on a legacy of award-winning vans, the Caddy has long been a benchmark in its class. And with the launch of the new Caddy, we've made it even more functional, flexible and versatile than its predecessors. Whether you decide to choose a new Caddy or Caddy Maxi, or the new Caddy Maxi Kombi, every model offers countless innovations and, of course, everything you'll ever need to not only assist you in your work, but to convey the best possible professional image to your customers.

NEW GENERATION OF EURO 6 ENGINES

with BlueMotion Technology as standard. This compliments our highly economical Euro 5 engine line-up.



EXCELLENT FUEL CONSUMPTION

with a combined cycle figure of up to **65.7mpg** and CO₂ emissions as low as **114g/km** for the Caddy BlueMotion panel van.



SAFETY STANDARDS LEADING THE WAY

means that the new Caddy is first in its class to include Automatic Post-Collision Braking System, as well as driver and passenger front seat and side curtain airbags as standard.



HIGH LOAD CAPACITY

with the ability to carry up to **735kg** in the new Caddy panel van.



NEW ASSISTANCE SYSTEMS FOR THE DRIVER

including Adaptive Cruise Control (ACC) with Front Assist area monitoring system, City Emergency Braking System and Automatic Post-Collision Braking System.



PROVEN VOLKSWAGEN QUALITY GIVES YOU PEACE-OF-MIND

as we only use the most durable materials and deliver the highest-quality workmanship.



FUNCTIONALITY AND FLEXIBILITY

with the new Caddy Maxi Kombi featuring folding, double-folding and removeable seats as well as a wide side sliding door.



VERSATILE STORAGE SYSTEMS

with lots of clever storage possibilities throughout the interior.



Bolder. Sharper. Newer.
The new design.

The new Caddy exudes the highest levels of competence and dependability. It's focused in every way – no more so than through its dynamic exterior styling. While the front delivers a bolder new stance, the rear features sharper design and elegantly sculptured rear light clusters. Additional highlights include the new chrome strip on the radiator grille, stylish new side indicators and a new range of alloy wheels.



More quality. More function.
More convenience.

The new interior.

The new Caddy has been thoroughly enhanced – both outside and inside. A completely new car-like dashboard with a super high-quality finish awaits you in the cab. To assist your working day you'll discover plenty of ingenious stowage solutions, ergonomic seating, improved interior acoustics and a broad selection of radio and infotainment systems – including DAB radio and Bluetooth® as standard. With front seat occupants benefitting from electric heated and adjustable wing mirrors, electric windows and front and curtain airbags as standard, it's a convenient and safe place to spend your day. Add these ingredients together and the new Caddy's interior moves to a whole new level and sets the standard in the light commercial vehicle category.



The new radio and infotainment systems.

Radio and navigation. The latest-generation devices are available with the new Caddy, including the Composition Colour and Composition Media DAB radio systems, as well as the Discover Media navigation system.

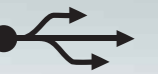


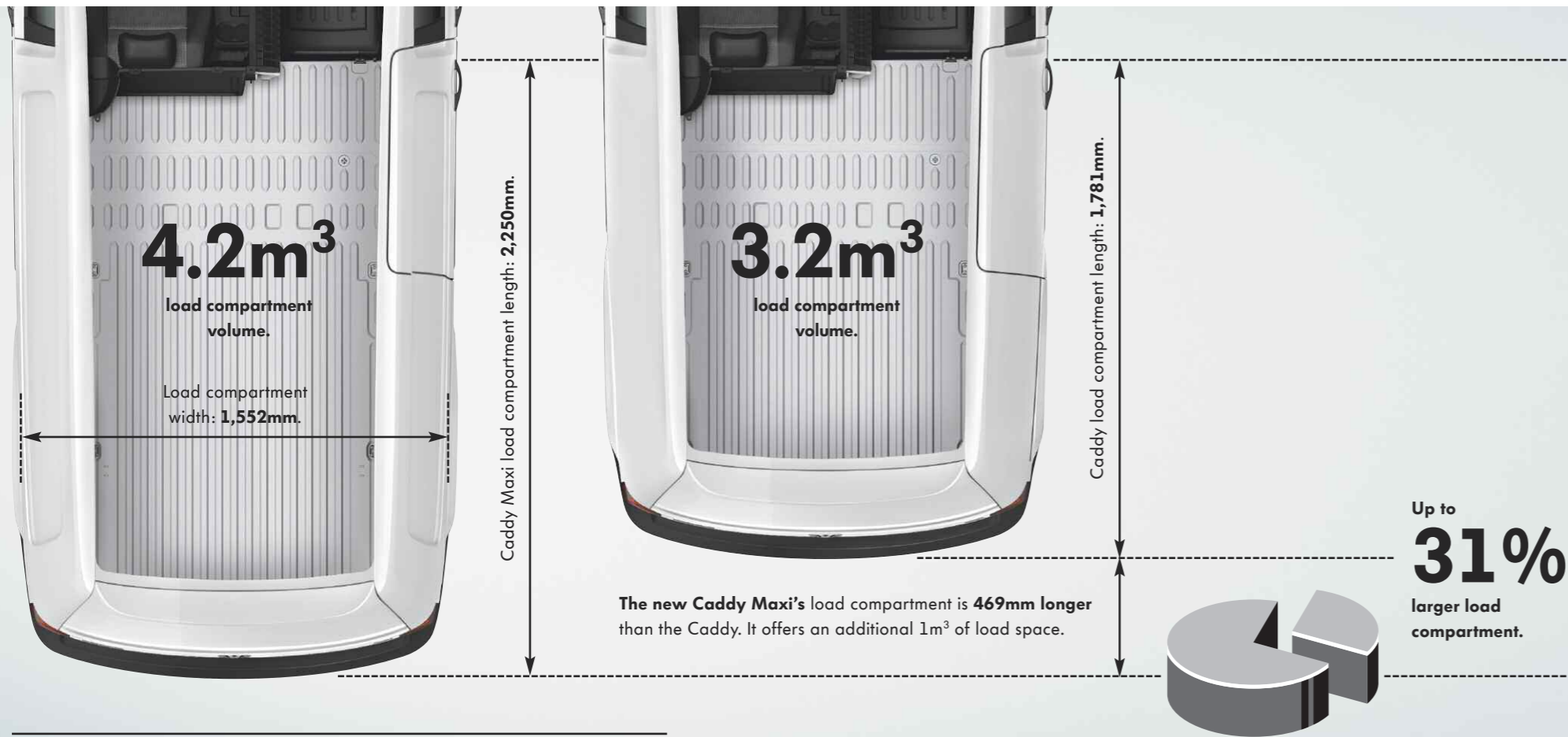
Voice recognition. The voice control system allows you to operate the telephone, navigation and audio functions without taking your hands off the steering wheel.

App-Connect. You can easily and safely operate special apps using this interface. It allows you to view and operate content and functions from your smartphone on the infotainment touchscreen.



Connectivity package. External media devices, such as MP3 players, can be connected via the USB port. Additionally, the mobile phone interface offers a Bluetooth® hands-free speaking system.





More robust. More versatile. More flexible.
The new loading space.

Built to last, the compact new Caddy panel van provides a useful 3.2m³ load compartment. If you need more room, then the new Caddy Maxi's load volume increases to 4.2m³, while the length increases by 469mm. If you need to combine passenger and load carrying, then the new Caddy Maxi Kombi allows you to carry up to 5 passengers (including the driver), while still offering 1.6m³ of load space. With the rear seats removed, the Caddy Maxi Kombi's volume increases to 4.1m³ – only slightly less than the cavernous Caddy Maxi.

As you'd expect, we've ensured that payloads are generous and that load access is easy, with a low load bed, wide side sliding doors and a choice of either asymmetric rear doors or tailgate. Whichever Caddy you choose, all feature numerous load-lashing rings (up to eight on the Caddy Maxi) and a selection of bulkhead, flooring, side lining and load securing options – all helping to ensure your load arrives intact.

More powerful. More economical. More advanced.
The new engines with the Euro 6 emissions standard.

In the new Caddy you can expect an economical generation of new engines featuring the Euro 6 emissions standard. All Caddy models utilising a Euro 6 engine include BlueMotion Technology as standard – consisting of Start/Stop, regenerative braking and low rolling resistance tyres. The new Caddy's optimised chassis is perfectly tailored to the needs of day-to-day work and when combined with any TDI engine, contributes to a dynamic driving experience.

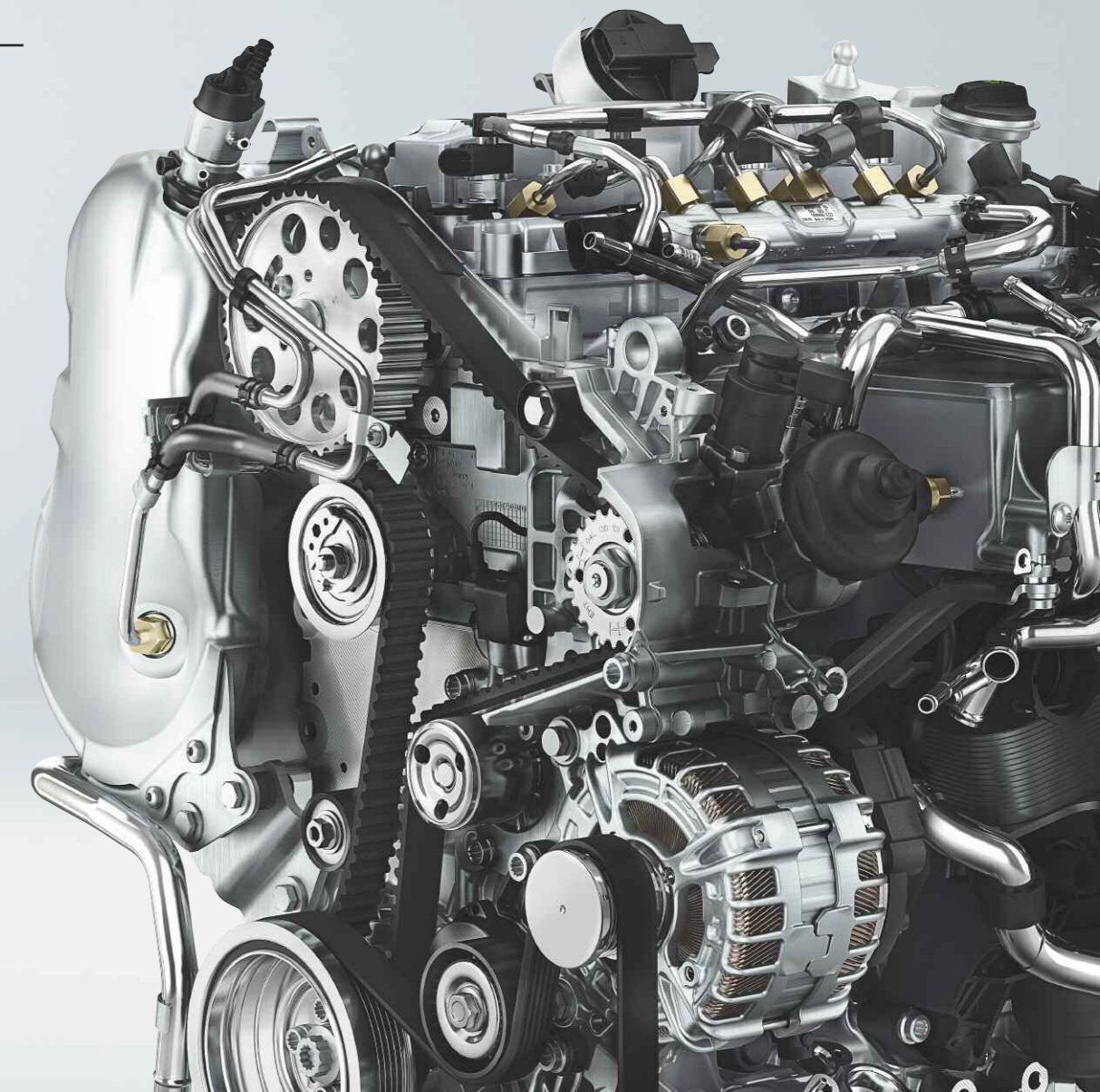
TDI Powerful, economical and advanced. Our TDI common-rail direct injection diesel engines offer various levels of performance and an abundance of torque for shifting heavy loads. Depending on your engine, you'll receive a 5 or 6-speed manual gearbox as standard, while the Euro 6 102PS and Euro 5 102PS and 140PS engines can be specified with a dual clutch direct shift gearbox (DSG), providing a smooth power-flow when changing gear.

EURO 6
2.0 litre 75kW (102PS)
BlueMotion
Average consumption: 65.7mpg
CO₂ emissions: 114g/km

EURO 5
1.6 litre 55kW (75PS)
Average consumption: 49.6mpg
CO₂ emissions: 149g/km

2.0 litre 103kW (140PS)
Average consumption: 47.1mpg
CO₂ emissions: 158g/km

1.6 litre 75kW (102PS)
Average consumption: 49.6mpg
CO₂ emissions: 149g/km



More innovative. More intelligent. More convenient.

The new driver assistance and safety systems.

To help ensure every journey ends as stress-free as it begins, the new Caddy is equipped with a number of new safety systems – all of which are activated in critical situations as a preventative measure. Add to this a variety of innovative driver assistance systems and you'll discover the new Caddy offers the highest possible levels of safety and peace-of-mind.



Rear-view camera. Displays a clear view of the area behind the vehicle which aids parking. Available as an option, the rear-view camera is only available in combination with a tailgate.



Cruise control including speed limiter. Maintains the selected speed, or limits the top speed to a value set by the driver. Optional on Euro 6 models.



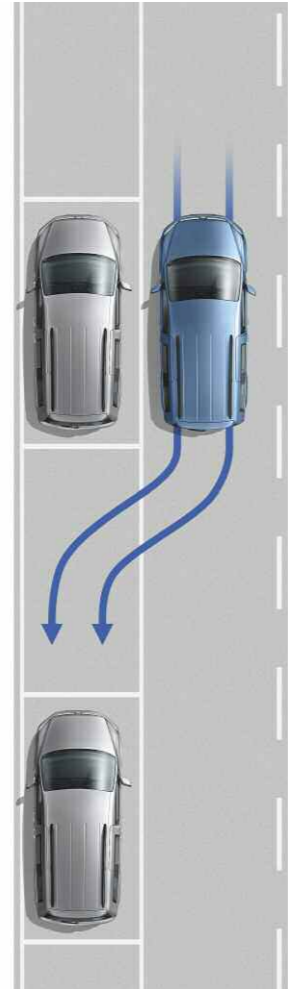
Driver Alert System. Registers deviation from normal steering patterns and uses visual and acoustic warnings to recommend that the driver takes a break. Standard on Euro 6 and Euro 5 Trendline and Highline.



'Brake Assist'. Fitted as standard, the system registers the speed at which the brake pedal is pressed. During emergency braking, it ensures full brake pressure is applied more quickly.

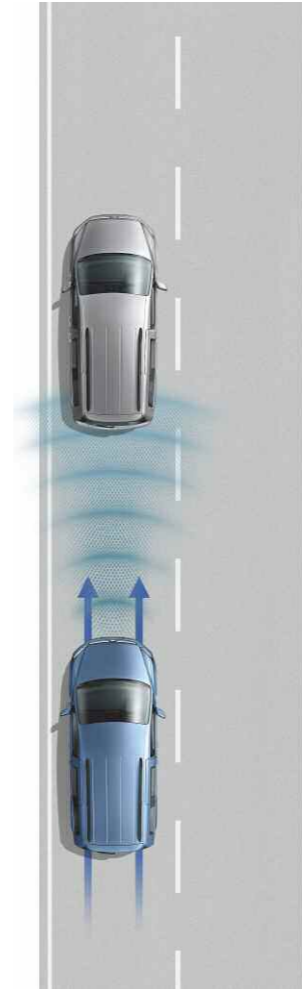


Airbags. Driver and front passenger front and curtain airbags are standard for the first time. They offer occupants the best possible protection in the event of head-on or side impacts. When carrying small children, the front passenger airbag can be deactivated.



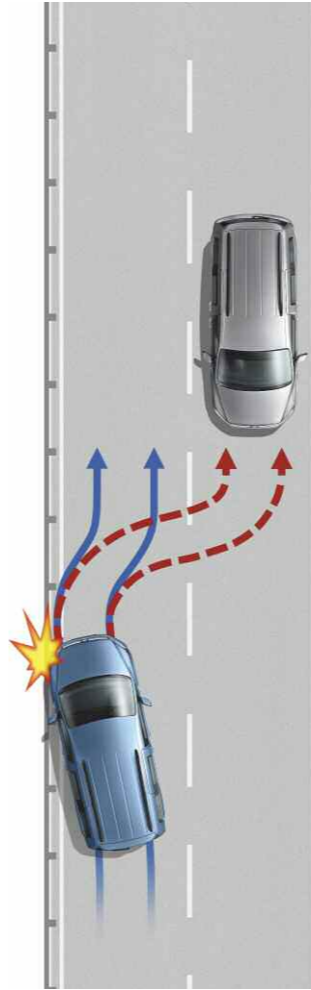
'Park Assist'.

This useful option aids parking into parallel and bay spaces. When reverse is engaged, the vehicle assumes control of the steering. All that's required of the driver is operate the clutch, accelerator and brake pedals.



Adaptive Cruise Control (ACC).

Available as an option, ACC uses a sensor to measure the distance (up to 120m) and speed relative to vehicles driving ahead. It automatically regulates the pre-set distance. ACC also includes the **Front Assist area monitoring system with City Emergency Braking System**. This detects critical distances, warns of hazardous situations and when necessary, triggers emergency braking.



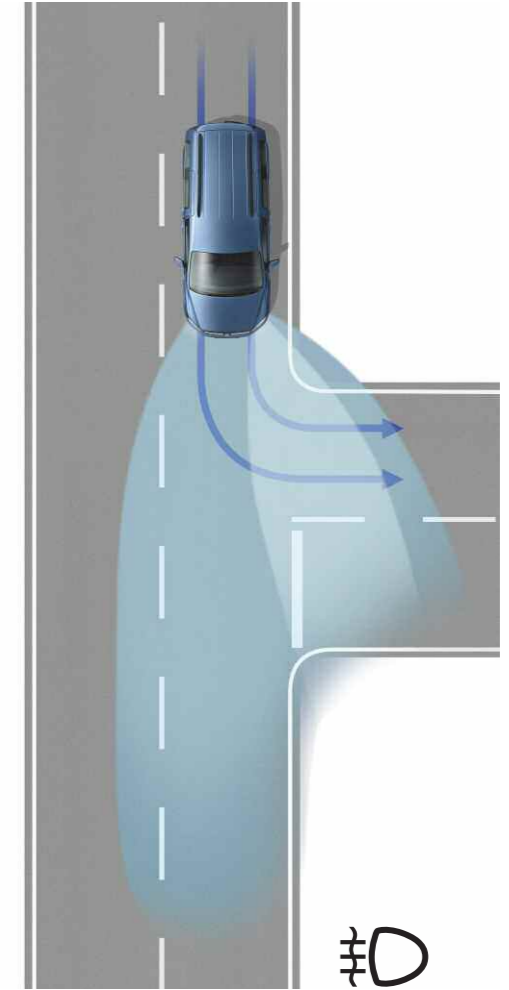
Automatic Post-Collision Braking System.

Standard on all Caddy models, it triggers braking after a collision, with the aim of preventing secondary collisions.



High-beam assistant 'Light Assist'.

Automatically dips the headlights and prevents dazzle for oncoming vehicles, or vehicles travelling ahead. At night time and at speeds of above 37mph, the system automatically switches the headlights to high-beam.



Fog lights with integrated cornering lights.

Available as an option, these help to illuminate curves and bends in the road ahead where the vehicle is turning.

More flexible. More comfortable. More spacious.

The highlights.

Standard on all new Caddy models.

Startline.

- Composition Colour DAB radio including AUX-IN, SD card slot, MP3 compatible CD player, two speakers and Bluetooth®.
- Driver and front passenger front and curtain airbags.
- Electric front windows.
- Electric heated and adjustable wing mirrors.
- Electric seatbelt tensioners.
- Lockable glovebox with illumination.
- Seatbelt warning when not engaged.
- Steel wheels including centre caps.



Equipment in addition to Startline.

Trendline.

- Body-coloured bumpers, door mirrors and handles.
- Cruise control.
- Multi-function display.
- Rear parking sensors.
- Storage compartments under front driver and passenger seats.
- Stylish full-width wheel trims.
- Twin sun visors with vanity mirrors.
- 8-way adjustability on driver's seat, including lumbar support.



Equipment in addition to Trendline.

Highline.

- Alloy wheels – new style (15" on 102PS, 16" on 140PS and 150PS).
- Climatic air conditioning.
- Front fog lights.
- Heated windscreen.
- Leather steering wheel, gearknob and gaiter.
- Thatcham Category 1 approved alarm.
- Visibility pack including auto-dimming rear-view mirror, rain sensors with automatic wipers and intermittent control.



New wheels.



'Caloundra' alloy wheels.
6J x 15 with 195/65 R15 tyres.



'Bendigo' alloy wheels.
6J x 16 with 205/55 R16 tyres.



'Rockhampton' alloy wheels.
6J x 17 with 205/50 R17 tyres.

Paint finishes and seat upholstery.

Solid paint finishes.

Candy White.
Solid paint.

Pure Grey.
Solid paint.

Cherry Red.
Solid paint.

Bright Orange.
Solid paint.

Pearl effect paint finishes.¹

Deep Black.
Pearl effect paint.

Metallic paint finishes.¹

Reflex Silver.
Metallic paint.

Indium Grey.
Metallic paint.

Mojave Beige.
Metallic paint.

Honey Orange.
Metallic paint.

Fontana Red.
Metallic paint.

Blackberry.
Metallic paint.

Chestnut Brown.
Metallic paint.

Viper Green.
Metallic paint.

Bamboo Garden Green.
Metallic paint.

Starlight Blue.
Metallic paint.

Acapulco Blue.
Metallic paint.

Seat upholstery.

Austin.
Titanium Black
Cloth upholstery.

Marathon.¹
Titanium Black
Strong cloth upholstery.

Mesh.¹
Titanium Black
Synthetic leather
upholstery.

¹ Available at extra cost.

The new Caddy

VWVW16PSCAPV

Issue: June 2015

Internet: www.volkswagen-vans.co.uk

Please note: The information and specifications contained within this brochure were correct at the time of printing and are for information purposes only. Some photographs illustrate pre-production vehicles and may show optional equipment or accessories. They may therefore vary in specification to final right-hand drive vehicles. Due to our continuous process of improvement, products are continually updated and changes may be made to the specifications from time to time.

Please check with your authorised Volkswagen Van Centre for current specifications on any vehicle before ordering.

Print processes do not allow exact reproduction of the paint and upholstery colours.