

The Polo



Das Auto.





Model shown is Polo SEL with optional 17" 'Mirabeau' alloy wheels, Light & Sight pack and Mayan Blue non-metallic paint.

REASSURINGLY SAFE. IMPRESSIVELY INTELLIGENT.

Driving the Polo has never been easier, thanks to a wealth of innovative technology. With on-board assistants designed to permanently monitor the road, warn the driver and even intervene in critical driving situations, it's one of the most intelligent cars you'll find. And certainly delivers more safety, practicality, comfort and efficiency than ever before.

CONTENTS.

Exterior	04
Wheels	06
Assistance systems	08
Multimedia	16
Interior	18
The Polo S, S A/C and SE	20
The Polo SE Design	21
The Polo SEL	22
The Polo BlueMotion	24
The Polo BlueGT	28
The new Polo GTI	30
Options	34
Think Blue	38
Paint	42
Upholstery	43
Combinations	44
Technical specification	48
Technology	52
Dimensions	53
Volkswagen service	54



Model shown is Polo SEL with optional 17" 'Mirabeau' alloy wheels and Mayan Blue non-metallic paint.

No doubt about it, the Polo is sporty, stylish and fun. With its sleek body-coloured bumpers, dynamic headlights, daytime running lights and chrome detailing on the grille, the exterior is unmistakably Volkswagen. Special touches include door mirrors with integrated indicators, rear light clusters and a choice of eye-catching alloy wheels, ensuring it's as individual, impressive and incomparable as ever. What's even better is that you can enjoy it, knowing you're safer than ever thanks to its impressive array of safety features and driver assistance systems.

SPORTY, STYLISH AND ABOVE ALL, SAFE.

01 THE REAR BUMPER integrates seamlessly into the bodylines, while 'Cherry red' reflectors add a sporty accent.

02 THE FRONT GRILLE incorporates a chrome trimmed louvre which flows seamlessly into the headlights, adding a touch of class.

03 THE REAR LIGHT CLUSTER incorporates the brake light, rear fog light and reversing light, enhancing the sporty rear styling.



Model shown is Polo SEL with optional 17" 'Mirabeau' alloy wheels and Mayan Blue non-metallic paint.



Models shown feature optional Mayan Blue non-metallic paint.

WHEELS.

It's all about personal taste. A choice of eye-catching alloy wheels allows you to add a touch of individuality to your Polo.



STEEL

5J x 14 inch steel wheels with 175/70 R14 tyres and wheel trims. Standard on S and S A/C models.



'LYON'

6J x 15 inch alloy wheels with 185/60 R15 tyres. Standard on SE models.



'PORTAGO'

7J x 16 inch alloy wheels in anthracite finish with 215/45 R16 tyres. Standard on SE Design models.



'RIVAZZA'

7J x 16 inch alloy wheels with 215/45 R16 tyres. Standard on SEL models.



'BUENOS AIRES'

5½J x 15 inch alloy wheels with 185/60 R15 low rolling resistance tyres. Standard on BlueMotion models.



'MONTANI'

7J x 17 inch alloy wheels with 215/40 R17 low rolling resistance tyres. Standard on BlueGT models.



'PARABOLICA'

7½J x 17 inch alloy wheels with 215/40 R17 tyres. Standard on GTI models.



'ESTRADA'

6J x 15 inch alloy wheels with 185/60 R15 tyres. Optional on S and S A/C models.



'KNIGHT'

7J x 16 inch alloy wheels with 215/45 R16 tyres. Optional on SE models.



'MONTANI ANTHRACITE'

7J x 17 inch alloy wheels with 215/40 R17 low rolling resistance tyres. No cost option on BlueGT models.



'MIRABEAU'

7J x 17 inch alloy wheels with 215/40 R17 tyres.

Optional on SEL models.

Model features optional 17" 'Mirabeau' alloy wheels, Adaptive Cruise Control (ACC) and Mayan Blue non-metallic paint.

SO MUCH TECHNOLOGY AT YOUR FINGERTIPS.

AUTO

LIGHT & SIGHT PACK

Automatic headlights with coming/leaving home lighting function operate using a dusk sensor and can be set to light the way to and from your vehicle for an adjustable length of time. The automatic dimming interior rear-view mirror reduces dazzle from vehicles behind, while the rain sensor automatically activates and regulates the speed of the windscreen wipers according to the amount of rainfall.



ACC (ADAPTIVE CRUISE CONTROL)

Maintains a set distance to the vehicle in front, automatically accelerating and braking as necessary.



'FRONT ASSIST' WITH CITY EMERGENCY BRAKING SYSTEM

Monitors the traffic situation in front of your car, warning you when you get too close to a vehicle and even applies the brakes to help avoid a collision.



CRUISE CONTROL

At speeds of over 19mph, cruise control will take the strain out of your journey by maintaining your chosen speed, so you can keep your eyes on the road, not the speedometer.



START/STOP FUNCTION

Saves fuel and reduces emissions by switching off the engine when stationary and in neutral, then automatically reactivating it when pulling away.



ASR (TRACTION CONTROL)

Help prevent wheel spin and gives better control using the ABS system.

DRIVER ALERT SYSTEM

Monitors driving behaviour and recommends when you need a break.



REAR-VIEW CAMERA

Helps you reverse park by displaying a clear view behind your vehicle via the audio system's display.

REAR VIEW

AUTOMATIC POST-COLLISION BRAKING SYSTEM

Initiates secondary braking operation after impact to avoid further collisions.

ESC

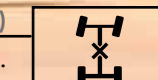
PARKING SENSORS

Warns you of potential obstacles when parking via audible and visual signals.



EDL (ELECTRONIC DIFFERENTIAL LOCK)

Improves traction and handling, especially on bends.



ABS (ANTI-LOCK BRAKING SYSTEM)

Helps maintain traction with the road surface, preventing the wheels from locking and skidding.

ABS

WHO SAYS YOU NEED EYES IN THE BACK OF YOUR HEAD?



REAR-VIEW CAMERA

The rear-view reversing camera helps make parking easier by emitting audible signals and displaying the area behind the vehicle on the audio system or optional navigation system's display. Additional reference lines help you to line up your Polo with the parking space, making reversing as stress free as possible. Optional on all models.

Rear-view camera must be specified in conjunction with Cruise & Park pack on S, S A/C, SE, SE Design and GTI models.
Rear-view camera must be specified in conjunction with parking sensors, front and rear on BlueMotion and BlueGT models.



Model shown is Polo SEL with optional rear-view camera, 17" 'Mirabeau' alloy wheels and Mayan Blue non-metallic paint.



Model shown is Polo SEL with optional 17" 'Mirabeau' alloy wheels, Light & Sight pack and Mayan Blue non-metalllic paint.

KEEPS ITS DISTANCE. TO HELP KEEP YOU SAFE.



ADAPTIVE CRUISE CONTROL (ACC)
Adaptive Cruise Control (ACC) provides intelligent control of your driving speed by automatically adjusting acceleration and braking. Activated via the multifunction steering wheel, you can select a driving speed, and set your desired distance to the car in front. This clever system will then monitor and regulate the distance and speed accordingly. Optional on SE, SE Design, SEL, and BlueGT models.

Please note: Adaptive Cruise Control (ACC) is not available with 1.0 litre 60 PS or 1.0 litre 75 PS engines.

STAYS ALERT NO MATTER WHAT.



Break is
recommended.

DRIVER ALERT SYSTEM

The Driver Alert system cleverly monitors your driving behaviour to help keep you safe. As soon as it detects unusual driving patterns, such as lane deviation or erratic steering movements, it recommends taking a break via visual and acoustic signals. Standard on SE models and above.



Model shown is Polo SEI with optional 17" 'Mirabeau' alloy wheels, Light & Sight pack and Mayan Blue non-metallic paint.

THE FUTURE OF INFOTAINMENT IS HERE.

Intuitive touch-screen displays and state-of-the-art technology ensure radio systems and navigation radio systems, are not only easy to operate, but provide all the journey information you need and recognise virtually any external multimedia device you wish to connect.



01 COMPOSITION COLOUR SYSTEM with 5 inch colour touch-screen, an AUX-in socket for connection to an external multimedia source, such as an iPod or MP3 player, a DAB digital radio receiver, dash-mounted single CD player, SD card reader, music playback from MP3, WMA and AAC files, USB connectivity¹ and six speakers. It also features Bluetooth telephone and audio connection for compatible devices² and you can also connect two devices at the same time. Standard on S and S A/C models.



02 COMPOSITION MEDIA SYSTEM 6.5 inch colour touch-screen with proximity sensor, an MDI (Multi Device Interface) via USB connection for connectivity to an external multimedia source – including Apple products, title and cover art display, SMS functionality allowing you to read, compose and send SMS messages using touch-screen display and glovebox-mounted CD player. It also includes Think Blue. Trainer. – which provides driver tips and journey analysis for more ecological driving and Bluetooth telephone and audio connection for two compatible devices² at the same time. Standard on SE models and above.



03 DISCOVER NAVIGATION TOUCH-SCREEN NAVIGATION/RADIO SYSTEM with 6.5 inch colour touch-screen control for navigation, CD and radio functions, is preloaded with European navigation data, 2D/2.5D map view, three calculated routes: Fast, Short and Eco, dynamic navigation based on TMC+, branded points of interest and Traffic Sign Display. SMS functionality – read, compose and send SMS messages using touch-screen display when your Polo is stationary. The touch-screen also features a proximity sensor which detects when your hand is approaching the screen and automatically adjusts the display, so it is ready for you to use. It includes free navigation software updates for a period of three years, please contact your authorised Volkswagen retailer for full details. Optional on SE models and above.

¹ Not compatible with Apple products, compatibility with other devices may vary, please contact your authorised Volkswagen retailer for full details.
² Devices must be Bluetooth HFP (Hands Free Profile) compatible, please contact your authorised Volkswagen retailer for specific device compatibility.

LUXURIOUS, STYLISH AND WITH EVERYTHING TO HAND.

You can sit back and relax in the Polo, even when you're driving. Why is that? Because everything you need in the luxurious cabin is right where you'd expect it to be. With height adjustable front sports seats*, contemporary décor and state-of-the-art equipment right at your fingertips, driving has never been easier. Or safer.

* Available on SE Design, BlueGT and GTI models.



Interior shown is Polo SEL with optional Winter pack, electronic climate control air conditioning, alcantara upholstery, Light & Sight pack and Mayan Blue non-metallic paint.

YOU'VE ARRIVED. BEFORE YOU'VE EVEN SET OFF.

Comfortable, luxurious, stylish or sporty, it's up to you.
With eight superbly equipped models to choose from, there's a Polo to suit every taste.



Interior shown is Polo S A/C with optional Mayan Blue non-metallic paint.



Interior shown is Polo SE with optional electronic climate control air conditioning, front centre armrest and Mayan Blue non-metallic paint.

S AND S A/C The Polo S offers a truly impressive range of standard equipment. The body-coloured bumpers and black radiator grille with chrome trimmed louvre, halogen headlights and heat insulating green tinted glass set the scene, with vibrant 'Grip' cloth upholstery, 'High Gloss Black' decorative inserts and matt chrome door handles continuing the theme inside. The Composition Colour infotainment system offers a 5 inch colour touch-screen, an AUX-in socket for connection to an external multimedia source, such as an iPod or MP3 player, a DAB digital radio receiver, dash-mounted single CD player, SD card reader, music playback from MP3, WMA and AAC files, USB connectivity¹, Bluetooth telephone and audio connection for compatible devices², and six speakers; while such features as electric front windows, driver's seat height adjustment, white instrument lighting and a three spoke steering wheel ensure driving comfort. Other features include a heated rear windscreen with automatic switch-off, folding rear seat backrest, central locking, tyre pressure loss indicator, speed sensitive power assisted steering and hill hold function, with battery regeneration (recuperation – energy recovery during braking) and Start/Stop function ensuring exceptional fuel economy. Specify the Polo S A/C and you get all the standard equipment of the S model, along with a manual air conditioning system.

SE The Polo SE offers an even greater range of impressive features, starting with eye-catching 'Lyon' 15 inch alloy wheels, body-coloured door handles and door mirrors, and a chrome trimmed front air intake. Inside, contemporary 'Rail' cloth upholstery, matt chrome detailing and a leather-trimmed three-spoke multifunction steering wheel, gear knob and handbrake grip adds elegance and refinement, enhanced by air conditioning, a multifunction computer, alarm with interior protection, remote central locking, electric windows and electrically heated and adjustable door mirrors. The Composition Media system features a 6.5 inch colour touch-screen, an MDI (Multi Device Interface) via USB connection for connectivity to an external multimedia source – including Apple products, title and cover art display, a DAB digital radio receiver, SMS functionality allowing you to read, compose and send SMS messages using the touch-screen display, glovebox-mounted single CD player and six speakers. It also includes Think Blue. Trainer. – which provides driver tips and journey analysis for more ecological driving. In addition, useful features include Driver Alert system, driver's and front passenger's front comfort seats with height adjustment, a luggage compartment with variable load floor, reading lights front and rear, illuminated vanity mirrors and a split folding rear seat backrest.



Interior shown is Polo SE Design with optional Light & Sight pack and electronic climate control air conditioning.

SE DESIGN Dynamic and sporty, there's no mistaking the Polo SE Design. Distinctive 'Portago' 16 inch anthracite finish alloy wheels set the scene, enhanced by a 'Gloss Black' radiator grille, 'Gloss Black' door mirrors with integrated indicators, door sill protectors and front fog lights with static cornering function. To the rear, the aesthetic styling continues with darkened rear light clusters, LED rear number plate lights and heat insulating rear tinted glass 65% light absorbing from the B pillar backwards. As you would expect, the interior is superbly equipped, building on the SE's impressive specification to include front sports seats with height adjustment, front footwell illumination in white and aluminium-look clutch, brake and accelerator pedals. Stylish 'Pyramid' cloth upholstery is available in Palladium Grey or Ceramique, complementing the front and rear carpet mats with 'Ceramique' edging, 'Ceramique' door panels with chrome decorative inserts, and 'Ceramique' stitching on the leather trimmed three-spoke multifunction steering wheel, gear knob and handbrake grip. The 'Dark Rhodium' centre console surround and 'Ceramique' lower dash completes the interior, creating a look that's exciting, sporty and contemporary.

¹ Not compatible with Apple products, compatibility with other devices may vary, please contact your authorised Volkswagen retailer for full details.
² Devices must be Bluetooth HFP (Hands Free Profile) compatible, please contact your authorised Volkswagen retailer for specific device compatibility.



Model shown is Polo SEL with optional 17" 'Mirabeau' alloy wheels, electric glass sunroof, Light & Sight pack and Mayan Blue non-metallic paint.

SEL If you're looking for an exceptional level of equipment that goes one step further, the Polo SEL is for you. From the outside, the SEL is equipped with stylish 'Rivazza' 16 inch alloy wheels, LED headlights for dipped and main beam including separate LED daytime running lights, headlight washers, LED rear number plate lights, front fog lights with static cornering function and heat insulating rear tinted glass 65% light absorbing from the B pillar backwards, not to mention the body-coloured door handles and door mirrors, and chrome trimmed front air intake. Inside, the luxury specification continues, building on the SE's impressive range of features including Composition Media system, multifunction computer, manual air conditioning and matt chrome detailing on the air vent surround, gear lever gaiter surround and handbrake grip button. The leather trimmed three-spoke multifunction steering wheel, gear knob and handbrake grip further enhance the impressive interior, and in addition, the SEL features a front centre armrest with storage compartment, cruise control and ultrasonic parking sensors front and rear, with audible warning and an optical parking display via the vehicle's audio system.



Interior shown is Polo SEL with optional Winter pack, electronic climate control air conditioning, alcantara upholstery and Mayan Blue non-metallic paint.



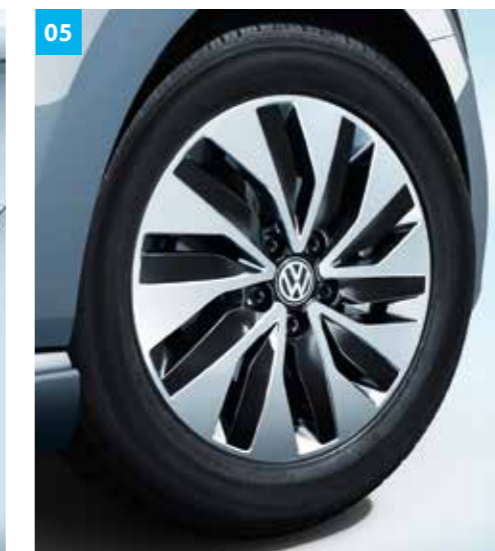
MAKES A STATEMENT. FROM THE MINUTE YOU FIRST SEE IT.

The Polo BlueMotion features a number of impressive, energy-saving technologies, designed to lower fuel consumption and reduce CO₂ emissions. The unique BlueMotion styling pack showcases its impressive environmental credentials, and when combined with optional Clearwater Blue metallic paint, creates a dynamic and eye-catching package.



Interior shown is Polo BlueMotion with optional electronic climate control air conditioning, Light & Sight pack and Clearwater Blue metallic paint.

BLUEMOTION The Polo BlueMotion offers impressive levels of economy and low emissions, building on the specification of the Polo S with a great range of features and proving that energy efficiency doesn't have to be at the expense of luxury and comfort. Externally, the BlueMotion styling pack includes uniquely shaped front and rear bumpers and the distinctive radiator grille, creating a real sense of style, with side skirts and a rear roof spoiler enhancing the aerodynamics. 'Buenos Aires' 15 inch alloy wheels add a sporting touch along with the body-coloured door handles and door mirrors with integrated indicators, and front fog lights with static cornering function. The unique 'BlueMotion' badging symbolises the car's impressive environmental credentials. The well-appointed interior features contemporary 'Link' upholstery and matt chrome detailing on the air vent surround, gear lever gaiter surround, handbrake grip button and internal door handles, creating a luxurious feel, enhanced by the leather trimmed three-spoke multifunction steering wheel, gear knob and handbrake grip. The Composition Media system features a 6.5 inch colour touch-screen, an MDI (Multi Device Interface) via USB connection for connectivity to an external multimedia source – including Apple products, title and cover art display, a DAB digital radio receiver, SMS functionality allowing you to read, compose and send SMS messages using the touch-screen display, glovebox-mounted CD player and six speakers. It also includes Think Blue. Trainer. – which provides driver tips and journey analysis for more ecological driving. Other luxuries include manual air conditioning, cruise control, telephone operation and phone book, electric front windows, front centre armrest with storage compartment, battery regeneration (recuperation – energy recovery during braking), Start/Stop function and multifunction computer with visual gear change recommendation for improved fuel consumption.



01 THE FRONT GRILLE has been aerodynamically designed to optimise performance, giving the Polo BlueMotion its distinctive look and creating real road presence.

02 'LINK' UPHOLSTERY in Titan Black/Blue creates a dynamic interior, while the driver's seat is height-adjustable and the front centre armrest also provides a handy storage space.

03 UNIQUE 'BLUEMOTION' BADGING on the front grille and rear tailgate announces that you are driving one of the most energy-efficient and environmentally-friendly cars in the Volkswagen range.

04 THE REAR ROOF SPOILER is finished in the vehicle body colour, emphasising the dynamic rear design and sculpted sidelines, and adding a touch of style while enhancing performance.

05 'BUENOS AIRES' 15 inch alloy wheels with 185/60 R15 low rolling resistance tyres not only add a sporting touch, but also help to improve the aerodynamics and reduce fuel consumption.



Interior shown is Polo BlueGT DSG with optional electronic climate control air conditioning and Light & Sight pack.

BLUEGT The Polo BlueGT delivers a combination of sports styling and performance along with impressive economy. Externally, 17 inch 'Montani' alloy wheels, front fog lights, twin exhaust tailpipe and sports suspension lowered by approx. 15mm hint at the driving experience in store, while the darkened rear light clusters, 'Gloss Black' door mirrors and radiator grille with chrome trimmed louvre add individual style. The 'BlueGT' styling pack includes uniquely shaped bumpers and side skirts, enhancing the car's aerodynamics, and the unique 'BlueGT' badge symbolises its sporting and environmental credentials. Inside, 'BlueSpeed' cloth upholstery with alcantara side bolsters, matt chrome detailing and black rooflining adds a contemporary touch, while front sports seats, electric windows and a leather trimmed three-spoke multifunction steering wheel, ensure total driving comfort and enjoyment. The Composition Media system features a 6.5 inch colour touch-screen, an MDI (Multi Device Interface) via USB connection for connectivity to an external multimedia source – including Apple products, title and cover art display, a DAB digital radio receiver, SMS functionality allowing you to read, compose and send SMS messages using the touch-screen display, glovebox-mounted CD player and six speakers. The Driver Alert system, cruise control and XDS electronic differential lock for improved traction and handling help increase vehicle safety, and the Multifunction computer includes ACT Active Cylinder Management for improved fuel consumption. A split folding rear seat backrest and luggage compartment with variable load floor adds functionality and practicality to the BlueGT's outstanding specification.



Model shown is Polo BlueGT with optional 17" 'Montani Anthracite' alloy wheels and Blue Silk metallic paint.



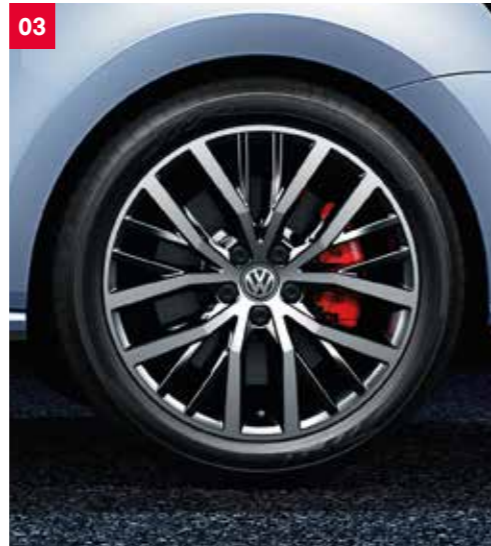
BREATHTAKING GTI PERFORMANCE.

If ever there was a car you could get addicted to driving, the new Polo GTI would be the one, delivering a breathtaking 192 PS performance and accelerating from 0-62mph in just 6.7 seconds. You only have to look at its sporty lines to know it's fast, with its characteristic front design featuring the distinctive honeycomb front air intake, red radiator grille louvre, stylish side skirts and iconic GTI badging. To find out just how sporty it can be, put it through its paces with the smooth six speed manual gearbox, or let the gearbox do the hard work for you with the seven speed automatic DSG transmission, so you can concentrate on enjoying the ride. This is GTI fun at its best.

01 LED HEADLIGHTS include separate LED daytime running lights with automatic range adjustment, headlight washers, low washer fluid warning light and LED rear number plate lights. The front fog lights featuring static cornering function, uniquely shaped front and rear bumpers, honeycomb front air intake and dynamic distinctive red GTI louvre below the radiator grille, all hint at the GTI's sporting prowess and heritage.

02 THE BODY-COLOURED REAR SPOILER emphasises the GTI's sleek bodylines and adds definition to the rear design. This aids vehicle dynamics and creates a sporting look, along with the twin exhaust tailpipe.

03 'PARABOLICA' 17 inch alloy wheels with 215/40 R17 tyres are dynamic and exciting, adding real sporting style and enhancing performance, while the red brake calipers add a sporty presence.



Interior shown is new Polo GTI with optional Discover Navigation touch-screen navigation/radio system, electronic climate control, Light & Sight pack, Cruise & Park pack, Winter pack, front centre armrest and Oryx White premium paint.

GTI The new Polo GTI delivers new standards of interior luxury and comfort, with height-adjustable front sports seats in fashionable 'Jacara' upholstery, a leather-trimmed three-spoke multifunction steering wheel finished with red stitching and the GTI logo, and sporty aluminium-look pedals. The dash and centre console display GTI-style decorative inserts, carpet mats are finished with red stitching, and stainless steel door sill protectors also feature the GTI logo, while 'Black' gloss interior trim details and black rooflining, grab handles and sun visors provide the perfect finishing touch to its sporty interior.

EVEN THE MOST IMPRESSIVE SPECIFICATION CAN BE UPGRADED.

Driving enjoyment is very much a matter of personal taste. That's why we give you the option of upgrading your Polo with a choice of impressive options, providing greater levels of comfort, luxury and convenience, depending on your requirements.



01

01 ALCANTARA SPORTS SEATS WITH 'MICROFIBRE' SIDE BOLSTERS add a luxurious, sporty look to the interior. Soft and supple, yet hard-wearing and durable, providing the ultimate in comfort and practicality, combining with the seat design to give exceptional lateral support, while ensuring total relaxation on long journeys. Optional on SE models and above.



02

02 REAR-VIEW CAMERA

The rear-view reversing camera makes parking easier by emitting audible signals and displaying the area behind the vehicle on the audio system or navigation system's display. Auxiliary lines help you navigate safely into parking spaces, and thanks to the high resolution display, even small obstacles such as kerbs are clearly visible. Optional on all models. Image shown features optional Discover Navigation Pro touch-screen navigation/radio system.

Rear-view camera must be specified in conjunction with Cruise & Park pack on S, S A/C, SE, SE Design and GTI models. Rear-view camera must be specified in conjunction with parking sensors, front and rear on BlueMotion and BlueGT models.



03

03 ELECTRONIC CLIMATE CONTROL AIR CONDITIONING provides your required cabin temperature quickly and efficiently, while maintaining your selected temperature. Optional on S A/C models and above.



04

04 ADAPTIVE CRUISE CONTROL (ACC)

including Front Assist radar sensor controlled distance monitoring system, City emergency braking system and cruise control. ACC offers you intelligent control of your driving speed by automatically adjusting acceleration and braking. The system will adjust your speed to that of the vehicle in front, keep your specified distance, warn if you are approaching too fast and, in an emergency situation, generate enough braking force to reduce the severity of a collision or even prevent the collision entirely. Optional on SE, SE Design, SEL, BlueGT and GTI models.

Please note: Adaptive Cruise Control (ACC) is not available with 1.0 litre 60 PS or 1.0 litre 75 PS engines.

01 ELECTRIC SUNROOF The Sunroof is just as eye-catching from the outside as it is from the inside. Adding light and space, it fills the interior with additional natural light, providing an uninterrupted view of the sky overhead. Optional on SE, SE Design, SEL and GTI models.



01 REAR TINTED WINDOWS from the B pillar back help reduce exposure to the sun's rays, to ensure a pleasant temperature for rear seat passengers, while also enhancing the exterior's sporty appeal. Optional on SE, BlueMotion and BlueGT and standard on SE Design, SEL and GTI models.



02 CRUISE & PARK PACK features cruise control and front and rear ultrasonic and audible parking sensors with optical parking display via the vehicle's audio system. Optional on S, S A/C, SE, SE Design and GTI, standard on SEL models.

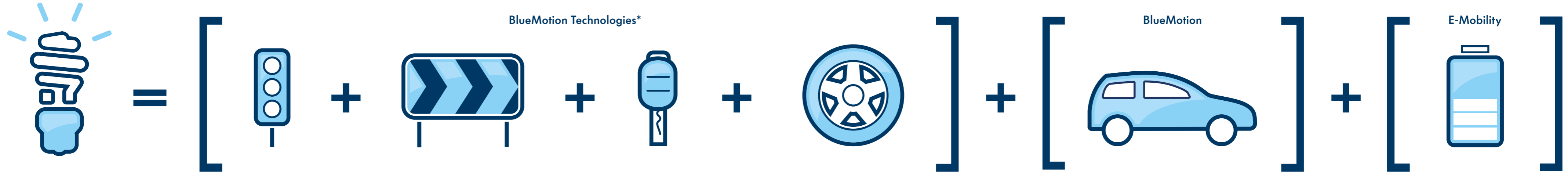


03 WINTER PACK includes headlight washers, heated front seats, heated windscreen washer jets and a low washer fluid warning light, ensuring greater safety and comfort in rain, snow and dust. Optional on all models.

Think Blue.

Sustainability + Ingenuity.

'Think Blue' is Volkswagen's promise to create progressive, environmentally friendly products and processes. So, from our concepts to our designs, from our fabrics to our machines, from our buildings to our water supply and from our engines to the open road, we can help shape a more sustainable future. We have already started by creating electric vehicles, BlueMotion models and efficient BlueMotion Technologies that save you money and reduce emissions.



Think Blue.
Smart ideas for sustainable driving.

Start/Stop technology saves fuel and therefore cuts emissions by automatically switching off the engine when the car isn't in motion.

Brake energy recuperation system saves fuel by making the most of energy that's usually lost when you brake.

Turbocharged engines deliver more power when you need it and use less fuel when you don't.

Low rolling resistance tyres save you fuel by reducing the friction between the tyre and the road, meaning it takes less energy – and less fuel – to go further.

Purpose-built BlueMotion cars include the full range of BlueMotion Technologies as well as an aerodynamically optimised design to reduce wind resistance and increase efficiency.

Electric vehicles comprise both hybrid and fully electric vehicles, offering all the features of their regular counterparts combined with the ultimate in driving efficiency and low operating costs. The ultimate way to Think Blue.

*BlueMotion Technologies are available on all Volkswagens, excluding Phaeton, and vary between models.



ONE EYE ON THE ROAD, THE OTHER ON THE ENVIRONMENT.

The Polo keeps one eye on the road but also has the environment firmly in its sights, thanks to a range of engines that set new standards in sustainable motoring. Powerful, economic and efficient, these engines deliver plenty of torque with minimal emissions, deliver up to 26% greater efficiency than their predecessors and comply with the very latest EURO 6 exhaust gas regulations, implemented in 2014.

If it's efficiency you're looking for, the BlueMotion 1.4 litre TDI diesel engine with 75 PS is a real highlight, capable of returning a frugal 91.1mpg on the Combined fuel cycle* with CO₂ emissions of just 82g/km. These impressive figures are due to a whole raft of innovations, including a Start/Stop function and battery regeneration system, multifunction computer with visual gear change recommendation for improved fuel consumption, Think Blue. Trainer. (driver tips and journey analysis) and a BlueMotion styling pack including uniquely shaped front and rear bumpers, distinctive radiator grille with side skirts and a rear roof spoiler further enhancing the aerodynamics. The Polo BlueMotion – the ultimate way to Think Blue.

If you'd prefer a petrol engine, you're spoilt for choice with no less than seven petrol units to choose from. For example, the 1.2 litre TSI 90 PS engine delivers 60.1mpg on the Combined fuel cycle*, with CO₂ emissions of just 107g/km. Or for the ultimate efficiency you could choose the 1.0 litre TSI 95 PS engine, the first petrol engine available for the BlueMotion. Fitted with all the innovative technology found in its diesel counterpart, it emits just 94g/km and assures outstanding fuel consumption figures of 68.9mpg on the Combined fuel cycle*, making it the Polo's most frugal petrol engine. Alternatively, for those seeking a balance of economy and performance, the Polo BlueGT 1.4 litre TSI ACT 150 PS is sure to tick all the boxes. Innovative ACT (Active Cylinder Technology) is at the forefront of Volkswagen's engine development. When driving with an engine speed of between 1,000 and 4,000rpm and at speeds of up to approximately 80mph (where the law permits), two of the four cylinders can be completely, and imperceptibly deactivated. This optimises the engine's efficiency and can ultimately reduce fuel consumption and CO₂ emissions. ACT is only available on BlueGT 1.4 litre TSI ACT 150 PS models.



THINK BLUE. TRAINER. Analyses your driving style in terms of the average and current fuel consumption of your Polo. And best of all, it gives you tips on your driving style so you can be even more efficient and environmentally friendly.



PAINT.

The high-quality Volkswagen painting process incorporates an anti-corrosion treatment, ensuring your Polo meets the toughest demands throughout its service life.



PURE WHITE*+ NON-METALLIC 0Q
S, SE, SE Design, SEL, BlueMotion, Blue GT, GTI



URANO GREY NON-METALLIC 5K
S, SE, SEL



BLACK* NON-METALLIC A1
S, SE, SEL, BlueMotion, GTI



MAYAN BLUE* NON-METALLIC D7
S, SE, SE Design, SEL



FLASH RED NON-METALLIC D8
S, SE, SEL, BlueMotion, GTI



BLUE SILK* METALLIC 2B
S, SE, SEL, BlueMotion, BlueGT, GTI



JAVA* METALLIC 4Q
S, SE, SEL



CARMEN RED* METALLIC 6K
S, SE, SE Design, SEL



REFLEX SILVER* METALLIC 8E
S, SE, SE Design, SEL, BlueGT, GTI



CLEARWATER BLUE* METALLIC P4
BlueMotion



NIMBUS GREY* METALLIC U5
S, SE, SEL



DEEP BLACK* PEARL EFFECT 2T
S, SE, SE Design, SEL, BlueGT, GTI

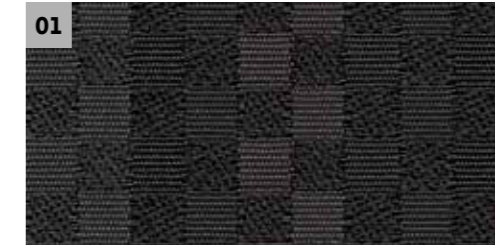


ORYX WHITE* PREMIUM PAINT OR
S, SE, SE Design, SEL, GTI

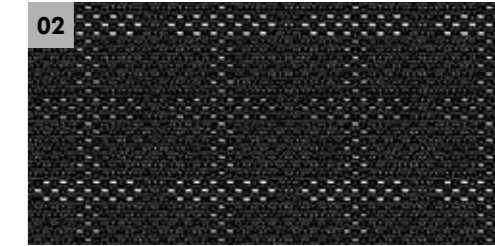
* Optional at extra cost. Please note, the print processes do not allow exact reproduction of the paint colours.
+ Pure White (0Q) paint is a no cost option on SE Design and BlueGT models.

UPHOLSTERY.

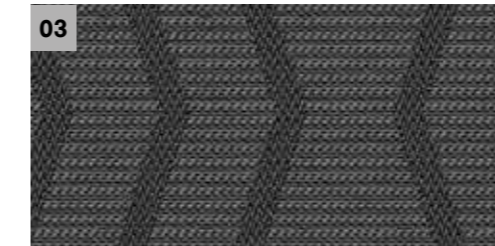
All upholsteries have two things in common – high-quality materials and uncompromising workmanship – protecting your seats against wear and giving you maximum comfort and enjoyment.



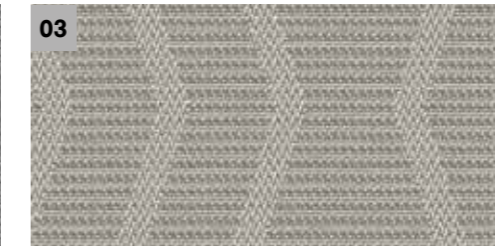
**'GRIP' CLOTH
TITAN BLACK (BY)**



**'RAIL' CLOTH
TITAN BLACK (BY)**



**'PYRAMID' CLOTH
PALLADIUM GREY (BQ)**



**'PYRAMID' CLOTH
CERAMIQUE (BP)**



**'LINK' CLOTH
TITAN BLACK/BLUE (RU)**



**'BLUESPEED' CLOTH
WITH ALCANTARA SIDE BOLSTERS
TITAN BLACK/OLYMPIA BLUE/
CRYSTAL GREY (RU)**



**'JACARA' CLOTH
BLACK/RED (XE)**



**ALCANTARA SPORTS SEATS
WITH 'MICROFIBRE' SIDE BOLSTERS*
TITAN BLACK (BY)**

- 01 Standard on S and S A/C
- 02 Standard on SE and SEL
- 03 Standard on SE Design
- 04 Standard on BlueMotion
- 05 Standard on BlueGT
- 06 Standard on GTI
- 07 Optional on SE, SEL, BlueGT and GTI

* Optional at extra cost. Please note, the print processes do not allow exact reproduction of the upholstery colours.

COMBINATIONS.

Seat upholstery	Carpet	Dashboard upper	Dashboard lower	Pure White*† OQ	Urano Grey 5K	Black* A1	Mayan Blue* D7	Flash Red D8	Blue Silk Metallic* 2B	Java Metallic* 4Q	Carmen Red Metallic* 6K	Reflex Silver Metallic* 8E	Clearwater Blue Metallic* P4	Nimbus Grey Metallic* U5	Deep Black Pearl Effect* 2T	Oryx White Premium paint* OR
'Grip' cloth – Standard on S and S A/C Titan Black (BY)	Black	Titan Black	Titan Black	●	●	●	●	●	●	●	●	●	-	●	●	●
'Rail' cloth – Standard on SE and SEL Titan Black (BY)	Black	Titan Black	Titan Black	●	●	●	●	●	●	●	●	●	-	●	●	●
'Pyramid' cloth – Standard on SE Design Palladium Grey (BQ)	Black	Palladium Grey	Ceramique	●	-	-	●	-	-	-	●	●	-	-	●	●
Ceramique (BP)	Black	Palladium Grey	Ceramique	●	-	-	●	-	-	-	●	●	-	-	●	●
'Link' cloth – Standard on BlueMotion Titan Black/Blue (RU)	Black	Titan Black	Titan Black	●	-	●	-	●	●	-	-	●	●	-	-	-
'BlueSpeed' cloth with alcantara side bolsters Standard on BlueGT Titan Black/Olympia Blue/Crystal Grey (RU)	Black	Titan Black	Titan Black	●	-	-	-	-	●	-	-	●	-	-	●	-
'Jacara' cloth – Standard on GTI Black/Red (XE)	Black	Titan Black	Titan Black	●	-	●	-	●	●	-	-	●	-	-	●	●
Alcantara sports seats with 'Microfibre' side bolsters* Optional on SE and SEL Titan Black (BY)	Black	Titan Black	Titan Black	○	○	○	○	○	○	○	○	○	-	○	○	○
Alcantara sports seats with 'Microfibre' side bolsters* Optional on BlueGT Titan Black (BY)	Black	Titan Black	Titan Black	○	-	-	-	-	○	-	-	○	-	-	○	-
Alcantara sports seats with 'Microfibre' side bolsters* Optional on GTI Titan Black (BY)	Black	Titan Black	Titan Black	○	-	○	-	○	○	-	-	○	-	-	○	○

* Pure White (OQ), Black (A1), Mayan Blue (D7), metallic, pearl effect and premium paints, and alcantara upholstery are optional at extra cost.
 † Pure White (OQ) paint is a no cost option on SE Design and BlueGT models.
 ● Standard. ○ Optional at extra cost. - Not available.



Interior shown is Polo SEL with optional alcantara sports seats and Mayan Blue non-metallic paint.

There's a Volkswagen for all of us.

Nippy city run around? Luxurious executive saloon? Open-top cruiser? Whatever it is you're looking for, we probably have it. From the iconic Beetle and Golf GTI to the up! and fuel-efficient BlueMotion Golf, there's a Volkswagen for everyone.

If you're thinking you might like to try a different Volkswagen, take a look at the selection below to see what else we have. There are 21 models in our range, so there's bound to be at least one that catches your eye.



Sporty

Golf: As exciting to drive as it is to look at. Style, performance and power.

You will also find our sporty gene in the iconic Golf GTD and R. Or for something more refined and elegant, there's the Eos too.



Efficient

Our **BlueMotion** models benefit from innovative energy-saving technology that helps you optimise fuel consumption and reduce harmful emissions. This includes low rolling resistance tyres and improved aerodynamics, accompanied with advanced engines and gearboxes. Choose from the BlueMotion Polo, Golf, Golf Estate and Golf SV.

However, BlueMotion Technology can be found across our range where automatic Start/Stop technology and brake energy recuperation is standard on the majority of our engines, helping you to save more money by being more efficient.



Spacious family cars

Sharan: The ultimate in convenience with sliding rear doors, and enough space for the whole family. And their luggage. And the dogs.

If it's space you're after, then you might also like to consider the Tiguan, Golf SV, Golf Estate, Touran and new Passat Estate.



Style

Beetle: The original icon. And still the most unique way to make a fashion statement.

For more fun with the top down, why not consider Beetle Cabriolet, Golf Cabriolet or Eos.



City run around

up!: The ideal city car. Efficient, fun and surprisingly spacious, with that trademark Volkswagen solidity.

If you're looking for something slightly more spacious, then why not consider the up!'s bigger sibling, the Polo. City run around efficiency with more versatility and even more space can be found on the iconic Golf – winner of 'World Car of the Year 2013'.



Executive

Volkswagen CC: Perfectly turned out high-tech, executive luxury. A contemporary, stylish and innovative coupé.

All the luxury you need can also be found in the top of the range Phaeton, and executive comfort in the new Passat, new Passat Estate and Jetta.



4x4

New Touareg: The SUV just got smarter. True four by four capability off-road, and smooth, luxurious and powerful when on it. Features four wheel drive technology, '4MOTION', as standard for optimum road grip, stability and control.

Go anywhere, do anything in our four wheel drive alternatives: Tiguan and new Passat and Estate 4MOTION models.

To see these models and configure your ideal Volkswagen, visit: www.volkswagen.co.uk

TECHNICAL SPECIFICATION – PETROL.

	S, S A/C, SE, SE Design 1.0 litre 60 PS	SE, SE Design 1.0 litre 75 PS	BlueMotion 1.0 litre TSI 95 PS	SE, SE Design 1.2 litre TSI 90 PS	SEL 1.2 litre TSI 110 PS	BlueGT 1.4 litre TSI ACT 150 PS	GTI 1.8 litre TSI 192 PS
Engine							
Engine type	Three cylinder petrol	Three cylinder petrol	Three cylinder petrol	Four cylinder petrol	Four cylinder petrol	Four cylinder petrol	Four cylinder petrol
Cubic capacity, ltrs/cc	1.0/999	1.0/999	1.0/999	1.2/1197	1.2/1197	1.4/1395	1.8/1798
Max. output, PS ⁽⁰¹⁾ /kW	60/44	75/55	95/70	90/66	110/81	150/110	192/141
at rpm	5000-6000	6200	5000-5500	4800	5000	5000-6000	4200-6200 [5400-6200]
Max. torque, lbs.ft/Nm	70/95	70/95	118/160	118/160	129/175	184/250	236/320 [184/250]
at rpm	3000-4300	3000-4300	1500-3500	1400-4000	1500-4000	1500-3000	1450-4200 [1250-5300]
Gearbox	Five speed manual	Five speed manual	Five speed manual	Five speed manual	Six speed manual	Six speed manual	Six speed manual
	–	–	–	Seven speed auto DSG	Seven speed auto DSG	Seven speed auto DSG	Seven speed auto DSG
Weights, kgs							
Manual gearbox:							
Unladen weight ⁽⁰²⁾	1055	1055	1111	1107	1135	1224	1272
Gross vehicle weight	1570	1570	1560	1620	1630	1660	1710
Payload ⁽⁰²⁾	427-533	427-533	426-505	421-531	420-522	425-481	513
Axle load limit: Front	820	820	840	870	880	910	960
Rear	800	800	770	800	800	800	800
Automatic DSG gearbox:							
Unladen weight ⁽⁰²⁾	–	–	–	1139	1163	1238	1280
Gross vehicle weight	–	–	–	1650	1660	1680	1710
Payload ⁽⁰²⁾	–	–	–	418-525	421-521	430-487	505
Axle load limit: Front	–	–	–	900	910	930	960
Rear	–	–	–	800	800	800	800
Trailer load limits, kgs ⁽⁰³⁾							
Braked 12% incline	800	800	500	1000	1100	1200	1100-1200
Unbraked:							
Manual gearbox	520	520	500	550	560	610	630
Automatic DSG gearbox	–	–	–	560	580	610	640
Towbar load limit	50	50	50	50	50	50	50
Max. roof load	75	75	75	75	75	75	75

Figures in [] are for 1.8 litre TSI 192 PS GTI DSG models only.

	S, S A/C, SE, SE Design 1.0 litre 60 PS	SE, SE Design 1.0 litre 75 PS	BlueMotion 1.0 litre TSI 95 PS	SE, SE Design 1.2 litre TSI 90 PS	SEL 1.2 litre TSI 110 PS	BlueGT 1.4 litre TSI ACT 150 PS	GTI 1.8 litre TSI 192 PS
Performance							
Top speed, mph (km/h), where the law permits							
Manual gearbox	100 (161)	107 (173)	119 (191)	114 (184)	121 (196)	137 (220)	146 (236)
Automatic DSG gearbox	–	–	–	114 (184)	121 (196)	137 (220)	146 (236)
Acceleration, secs 0 - 62mph							
Manual gearbox	15.5	14.3	10.5	10.8	9.3	7.8	6.7
Automatic DSG gearbox	–	–	–	10.8	9.3	7.8	6.7
ABI insurance group, 1 - 50	6E, 7E, 7E, 7E	9E, 10E	15E	14E, 14E	18E	23E	29E
Environmental information							
Fuel grade, minimum	Unleaded, 95 RON	Unleaded, 95 RON	Unleaded, 95 RON	Unleaded, 95 RON	Unleaded, 95 RON	Unleaded, 95 RON	Unleaded, 95 RON
Fuel tank capacity, galls/ltrs ⁽⁰⁵⁾	10.0/45	10.0/45	10.0/45	10.0/45	10.0/45	10.0/45	10.0/45
Official fuel consumption manual gearbox, mpg/ltr per 100km ⁽⁰⁶⁾							
Urban	49.6/5.7	48.7/5.8	56.5/5.0	47.1/6.0	46.3/6.1	47.1/6.0	37.2/7.6
Extra-urban	68.9/4.1	67.3/4.2	78.5/3.6	70.6/4.0	70.6/4.0	68.9/4.1	55.4/5.1
Combined	60.1/4.7	58.9/4.8	68.9/4.1	60.1/4.7	58.9/4.8	58.9/4.8	47.1/6.0
Official fuel consumption automatic DSG gearbox, mpg/ltr per 100km ⁽⁰⁶⁾							
Urban	–	–	–	48.7/5.8	48.7/5.8	48.7/5.8	39.2/7.2
Extra-urban	–	–	–	68.9/4.1	68.9/4.1	68.9/4.1	60.1/4.7
Combined	–	–	–	60.1/4.7	60.1/4.7	60.1/4.7	50.4/5.6
Official CO ₂ emission, g/km							
Manual gearbox ⁽⁰⁷⁾	106	108	94	107	110	110	139
Automatic DSG gearbox ⁽⁰⁷⁾	–	–	–	109	109	108	129
Emission class	EURO 6	EURO 6	EURO 6	EURO 6	EURO 6	EURO 6	EURO 6
Noise, dB							
Manual gearbox	71.0	72.0	TBA	70.0	71.0	72.0	73.0
Automatic DSG gearbox	–	–	–	69.0	69.0	73.0	71.0

TECHNICAL SPECIFICATION – DIESEL.

	SE, SE Design 1.4 litre TDI 75 PS	BlueMotion 1.4 litre TDI 75 PS	SEL 1.4 litre TDI 90 PS
Engine			
Engine type	Three cylinder diesel	Three cylinder diesel	Three cylinder diesel
Cubic capacity, ltrs/cc	1.4/1422	1.4/1422	1.4/1422
Max. output, PS ⁽⁰¹⁾ /kW	75/55	75/55	90/66
at rpm	3000-3750	3000-3750	3500
Max. torque, lbs.ft/Nm	154/210	154/210	169/230
at rpm	1500-2000	1500-2000	1500-2500
Gearbox	Five speed manual	Five speed manual	Five speed manual
	–	–	–
Weights, kgs			
Manual gearbox:			
Unladen weight ⁽⁰²⁾	1152	1165	1151
Gross vehicle weight	1650	1620	1670
Payload ⁽⁰²⁾	407-531	431-506	428-531
Axle load limit: Front	920	900	920
Rear	780	770	800
Automatic DSG gearbox:			
Unladen weight ⁽⁰²⁾	–	–	–
Gross vehicle weight	–	–	–
Payload ⁽⁰²⁾	–	–	–
Axle load limit: Front	–	–	–
Rear	–	–	–
Trailer load limits, kgs ⁽⁰³⁾			
Braked 12% incline	1000	1000	1100
Unbraked:			
Manual gearbox	570	580	570
Automatic DSG gearbox	–	–	–
Towbar load limit	50	50	50
Max. roof load	75	75	75

	SE, SE Design 1.4 litre TDI 75 PS	BlueMotion 1.4 litre TDI 75 PS	SEL 1.4 litre TDI 90 PS
Performance			
Top speed, mph (km/h), where the law permits			
Manual gearbox	107 (173)	110 (178)	114 (184)
Automatic DSG gearbox	–	–	–
Acceleration, secs 0 - 62mph			
Manual gearbox	12.9	12.9	10.9
Automatic DSG gearbox	–	–	–
ABI insurance group, 1 - 50	12E, 13E	15E	15E
Environmental information			
Fuel grade, minimum	Diesel ⁽⁰⁴⁾	Diesel ⁽⁰⁴⁾	Diesel ⁽⁰⁴⁾
Fuel tank capacity, galls/ltrs ⁽⁰⁵⁾	10.0/45	10.0/45	10.0/45
Official fuel consumption manual gearbox,			
mpg/ltr per 100km ⁽⁰⁶⁾			
Urban	70.6/4.0	70.6/4.0	70.6/4.0
Extra-urban	91.1/3.1	108.6/2.6	91.1/3.1
Combined	83.1/3.4	91.1/3.1	83.1/3.4
Official fuel consumption automatic DSG gearbox,			
mpg/ltr per 100km ⁽⁰⁶⁾			
Urban	–	–	–
Extra-urban	–	–	–
Combined	–	–	–
Official CO ₂ emission, g/km			
Manual gearbox ⁽⁰⁷⁾	88	82	88
Automatic DSG gearbox ⁽⁰⁷⁾	–	–	–
Emission class	EURO 6	EURO 6	EURO 6
Noise, dB			
Manual gearbox	71.0	70.0	71.0
Automatic DSG gearbox	–	–	–

TECHNOLOGY.

Engines

- Front transverse-installed engine
- 1.0 litre/60 PS ⁽⁰¹⁾ (44 kW) petrol engine: EU6 emissions standard three cylinder in-line. Available with five speed manual
- 1.0 litre/75 PS ⁽⁰¹⁾ (55 kW) petrol engine: EU6 emissions standard three cylinder in-line. Available with five speed manual
- 1.0 litre/95 PS ⁽⁰¹⁾ (70 kW) petrol engine: EU6 emissions standard three cylinder in-line. Available with five speed manual
- 1.2 litre/90 PS ⁽⁰¹⁾ (66 kW) petrol engine: EU6 emissions standard four cylinder in-line. Available with five speed manual and a seven speed automatic DSG transmission
- 1.2 litre/110 PS ⁽⁰¹⁾ (81 kW) petrol engine: EU6 emissions standard four cylinder in-line. Available with six speed manual and a seven speed automatic DSG transmission
- 1.4 litre/150 PS ⁽⁰¹⁾ (110 kW) petrol engine: EU6 emissions standard four cylinder in-line MPI (Multi Point Injection) engine, with four valves per cylinder. Includes ACT (Active Cylinder Technology) which shuts off 2 cylinders under certain driving conditions to reduce fuel consumption and emissions. Available with six speed manual and a seven speed automatic DSG transmission
- 1.8 litre/192 PS ⁽⁰¹⁾ (141 kW) petrol engine: EU6 emissions standard four cylinder in-line. Available with six speed manual and a seven speed automatic DSG transmission
- 1.4 litre/75 PS ⁽⁰¹⁾ (55 kW) common rail diesel engine: EU6 emissions standard, three cylinder in-line turbocharged common rail diesel engine, four valves per cylinder. Fitted with a turbocharger and a DPF (diesel particulate filter). Available with a five speed manual transmission
- 1.4 litre/90 PS ⁽⁰¹⁾ (66 kW) common rail diesel engine: EU6 emissions standard, three cylinder in-line turbocharged engine, with four valves per cylinder. Fitted with a turbocharger and a DPF (diesel particulate filter). Available with a five speed manual transmission

Transmission

- Front wheel drive through asbestos-free single-plate dry clutch. Hydraulic clutch-mechanism. Five or six speed manual transmissions with double joint half axles. Seven speed automatic DSG gearbox with a dry multi-plate clutch and double joint half axles

Steering

- Electro-mechanical steering rack
- Collapsible, height and lengthways adjustable safety steering column

Running gear

- Electronic Stability Control (ESC) including Electronic Differential Lock (EDL), Traction Control (ASR) and Countersteer Support
- Front suspension through coil springs with telescopic shock absorbers, all elements integrated in chassis legs
- Rear suspension with gas pressure shock absorbers and separate springs
- Front and rear anti-roll bar
- XDS electronic differential lock (BlueGT and GTI only)

Brakes

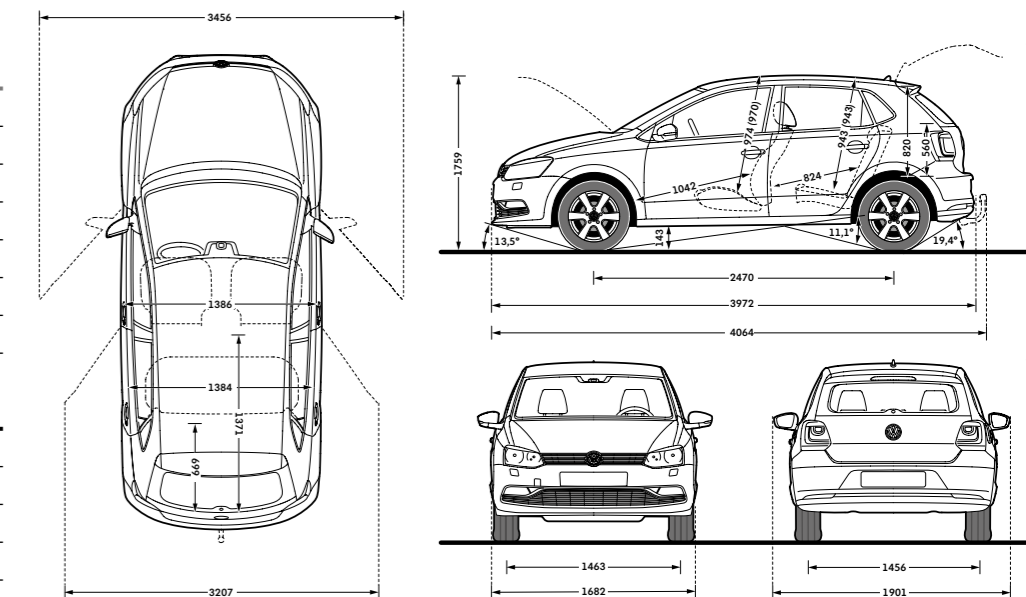
- Electronically controlled Anti-lock Braking System (ABS) with Electronic Brake-pressure Distribution (EBD)
- Diagonal twin-circuit brake system with front and rear disc brakes (front ventilated)
- Rear drum brakes (1.0 ltr 60 PS, 1.0 75 PS and 1.4 ltr 75 PS models)
- Asbestos-free brake pads
- Hydraulic Brake Assist (HBA)

Technical specification notes

- 01) The maximum power output figures are quoted in PS (or Pferdestärke, which is the metric equivalent of horsepower). To convert from metric to imperial horsepower, divide the PS figure by 1.0139.
- 02) Figures are calculated in accordance with manufacturer's criteria. The individual unladen weight depends on the specification of the vehicle, this then reduces the possible payload accordingly. The unladen weight and payload both include the fuel tank 90% full, driver (68kg) and luggage (7kg) in line with EU directive 95/48. Unladen weight shown refers to 3-door models. The unladen weight of 5-door models will increase by 25kg.
- 03) With increasing altitude the engine performance diminishes. From 1,000m above sea level and for every 1,000m thereafter 10% of the vehicle/trailer weight (trailer weight + gross vehicle weight) must be deducted.
- 04) The use of 100% RME and FAME (bio diesel) is not possible. Forecourt diesel with up to 7% bio diesel content, adhering to standard BS EN 590, can be used in diesel engines. The use of ethanol in forecourt petrol meeting BS EN 228 is allowable.
- 05) The size of the fuel tank is approximate and therefore it may be possible to add a greater amount of fuel than the size of the tank specified, due to the space in the filler neck.
- 06) Fuel consumption and CO₂ figures are obtained under standardised EU test conditions (Directive 93/116/EEC). This allows a direct comparison between different manufacturer models but may not represent the actual fuel consumption achieved in 'real world' driving conditions. More information is available on the Volkswagen web site at www.volkswagen.co.uk and at www.vca.gov.org.
- 07) The weight of a vehicle will influence the level of CO₂ emission it produces; as a result, vehicles with higher levels of specification and factory-fitted options may emit higher levels of CO₂.

DIMENSIONS.

	S, S A/C, SE, SE Design, SEL, Blue GT	BlueMotion	GTI
Exterior dimensions			
Length, mm	3972	3970	3983
Width – including door mirrors, mm	1901	1901	1901
Width – opened front/rear doors, mm	3456/3207	3456/3207	3456/3207
Height – mm	1453	1456	1443
Height – opened bonnet/floor, mm	1759	1762	1750
Height – opened tailgate/floor, mm	2000	2003	1990
Wheelbase, mm	2470	2468	2468
Turning circle, m	10.6	10.6	10.6
Interior dimensions			
Effective headroom – front, mm (with sunroof)	974 (970)	974 (N/A)	974 (970)
Effective headroom – rear, mm (with sunroof)	943 (943)	943 (N/A)	943 (943)
Elbow width, front, mm	1386	1386	1393
Elbow width, rear, mm	1384	1384	1384
Legroom front, mm	1042	1042	1042
Legroom rear, mm	824	824	824
Maximum luggage capacity, litres VDA measuring method using 200 x 100 x 50mm blocks			
With rear seats upright	280	280	204
With rear seats folded	952	952	882



On illustrations, where arrows and figures are shown inside of the vehicle, the measurements are for interior dimensions. Where arrows and figures are shown outside of the vehicle, the measurements are for exterior dimensions.

VOLKSWAGEN SERVICE.

The Volkswagen Warranty

Three-year Warranty

All Volkswagen passenger cars come with a three-year/60,000 miles warranty, which protects your car against the failure of most technical and electrical components due to manufacturing defects. This comprises a two-year manufacturer's warranty with unlimited mileage plus a further one-year/60,000 miles (whichever is soonest) Retailer Warranty¹. Should the mileage exceed 60,000 miles within the first two years, the manufacturer's two-year warranty will still be valid. Full details of the three-year warranty are available from your authorised Volkswagen retailer or repairer.

Body Protection Warranty

The internal body sections and panels of the Polo are covered against rusting through from the inside for 12 years. Naturally, the vehicle must be cared for in compliance with the operating instructions. Please consult your authorised Volkswagen retailer or repairer for full warranty details.

Three-year Paintwork Warranty

This latest warranty, pioneered by Volkswagen, really provides you with the widest possible cover on a new car. There are no special conditions attached and paintwork manufacturing defects will be rectified without charge. Naturally, during the warranty period the car must be cared for in compliance with the operating instructions.

Approved Accessories

A comprehensive range of accessories from alloy wheels to carpet mats is available to complement the factory-fitted option list. Volkswagen approved accessories purchased from and fitted by your authorised Volkswagen retailer at the point of vehicle sale will also benefit from the three-year vehicle warranty.

Extended warranty

If you order the Volkswagen Extended Warranty as an option when buying your new Polo then you get the 100% Volkswagen Warranty and you can continue to enjoy comprehensive Volkswagen protection against many unforeseeable repair costs. Designed to your needs, you can purchase an extra one or two year's warranty up to a maximum of five years or 90,000 miles.

Service Intervals

Volkswagen is pleased to offer you a choice on how your Volkswagen is serviced. The appropriate selection is entirely dependent on how the car is likely to be driven and its general use. To help you identify which type of service would be most suitable, please refer to the following guide.

The Fixed Service is recommended for vehicles that will cover less than 10,000 miles in 12 months and if the vehicle is likely to be used in the following way:

- Predominantly urban driving, short journeys with frequent cold starts.
- Activities regularly producing high engine loading, e.g. frequent hill climbs, driving with vehicle fully loaded and towing.
- Uneconomical driving style using high rpms with heavy acceleration and heavy braking.

The service intervals for the Fixed Service are as follows:

- Oil change service – After 1 year or 10,000 miles (15,000km), whichever is soonest.
- Inspection service² – First after 2 years or 20,000 miles (30,000km), then every one year or 20,000 miles (30,000km), whichever is soonest.

The Flexible Service is recommended for vehicles with daily mileage of more than 25 miles where the vehicle is driven regularly mainly on longer distance journeys. The vehicle is driven mainly at a constant speed with minimum vehicle and engine loading, minimal towing and driven in an economical manner. With the Flexible Service the vehicle can cover anywhere between 10,000³ and a maximum of 20,000³ miles or 24 months (whichever is soonest) between oil changes.

The service intervals for the Flexible Service are as follows:

- Oil change service – According to flexible service interval display (after 2 years at the latest).
- Inspection service² – First after 2 years or 20,000 miles (30,000km), then every one year or 20,000 miles (30,000km), whichever is soonest.

The up! model is only available with the Fixed Service schedule. Please consult your authorised Volkswagen retailer or repairer for advice and full details.

Please note: If you purchase a Volkswagen Fixed Price Service Plan your vehicle will follow the Fixed Service schedule.

Volkswagen Insurance⁴

We want you to start enjoying your new car from day one and thanks to Volkswagen Insurance complimentary seven day cover, you can. Call free on 0800 316 7892 (lines are open Monday to Friday 8am – 9pm and Saturday 9am – 5pm), provide a few details and a cover note will be sent to your retailer. They will then tax your car and you can drive it away.

Volkswagen Ensurance⁵

Get three years' Volkswagen Ensurance cover for free.

Another great benefit of being a Volkswagen driver. If your Volkswagen was damaged in an accident, wouldn't you want it fixed by a Volkswagen trained technician using only genuine Volkswagen parts?

Ensurance is Volkswagen's accident and repair cover which does exactly that. It works alongside your main comprehensive motor insurance policy no matter who you are insured with, to make sure you get the quality repair and service you would want. If you're involved in an accident or your car is stolen, just one call to us and we'll look after your claim from start to finish ensuring your Volkswagen is restored to the highest standard.

Activate your cover and benefit from:

- A guarantee that your Volkswagen will be repaired in a Volkswagen Insurance approved repairer, by Volkswagen trained technicians, using only genuine Volkswagen parts and paints.
- A dedicated Claims Manager will manage your claim from start to finish, liaising with your insurer and the repairer so you don't have to.
- Help to recover any uninsured losses using our Legal Expenses Cover.
- Online claims tracking so you can keep up to date with the status of any claim.

Volkswagen Ensurance is free to all Volkswagen customers for three years and it only takes a minute to get cover. To find out more and to activate your cover, visit volkswagen-ensurance.co.uk

Volkswagen Finance⁶

Volkswagen Finance specialises in providing funding solutions for Volkswagen drivers. Whether your Volkswagen is for private or business use, you can choose from a range of funding options.

- Solutions – a personal contract plan
- Hire purchase
- Lease purchase
- Finance lease
- Contract hire

With all Volkswagen Finance products you can choose a fixed-cost maintenance plan to help you budget for your servicing and maintenance costs. No matter what finance product you choose, your local Volkswagen retailer will be able to provide you with a personalised quote that could meet your budget and vehicle needs.

CO₂ Emissions

Increased weight of a vehicle, including higher trim levels and the addition of options will have a detrimental influence on the level of fuel consumption and CO₂ emissions produced.

The CO₂ and fuel consumption figures are obtained from tests on a representative vehicle of the type, conducted and approved in accordance with Council Directive 80/1268/EEC as amended by Directive 1999/100/EC (or later) on the approximation of the laws of the member states relating to the carbon dioxide emissions and the fuel consumption of motor vehicles.

Volkswagen Roadside Assistance

Every new car is registered for Volkswagen Roadside Assistance for one year except the Touareg and Phaeton which are registered for three years. This provides vehicle roadside and home recovery in the unlikely event of a breakdown in the UK and Europe (subject to conditions). Volkswagen Roadside Assistance can also be purchased for subsequent years. For full details, please contact your authorised Volkswagen retailer.

Tax Free Sales

For full details, please contact your authorised Volkswagen retailer.

Please note:

Some illustrations in this brochure do not necessarily reflect UK specifications and may not be available. In particular, controls and some items of equipment are positioned differently for the UK.

The specifications contained in this brochure are for information purposes only and are subject to change.

If you require any specific feature, you must consult your authorised Volkswagen retailer who is regularly updated with any change in specification. Please check model availability and full specification details with your authorised Volkswagen retailer prior to ordering.

Note: we would like to advise you that telephone calls to Volkswagen Customer Care may be monitored and recorded as part of our training and quality assurance processes. All our monitoring and recording processes meet OfTel regulations.

¹ All warranty work must be completed by an authorised Volkswagen retailer or repairer.

² The inspection service first at 3 years (or 40,000 miles) and then every second year (or 40,000 miles) has additional workscope.

³ The quoted mileage is based on a conversion from kilometres and is therefore unlikely to exceed circa 18,000 miles between oil changes.

⁴ Volkswagen Insurance is a trading name of Volkswagen Insurance Service (Great Britain) Limited, an appointed representative of Volkswagen Financial Services (UK) Limited, Brunswick Court, Yeomans Drive, Blakelands, Milton Keynes MK14 5LR. Registered in England number 2835230. Volkswagen Insurance is sold, underwritten and administered by Allianz Insurance plc registered in England number 84638. Registered office 57 Ladymead, Guildford, Surrey GU1 1DB. Volkswagen Financial Services (UK) Limited and Allianz Insurance plc are authorised and regulated by the Financial Services Authority. Volkswagen Financial Services (UK) Limited and Allianz Insurance plc are not part of the same corporate group.

⁵ Ensurance from Volkswagen Insurance is sold and administered by Lawshield UK Limited, registered in England number: 3360532 (registered office: Lawshield House, 850 Ibis Court, Lakeside Drive, Centre Park, Warrington, Cheshire WA1 1RL) and underwritten by UK General Insurance Limited on behalf of Ageas Insurance Limited, registered in England number: 354568 (registered office: Ageas House, Tollgate, Eastleigh, Hampshire SO53 3YA).

⁶ Finance is available to 18s and over, subject to status. Terms and conditions apply. Volkswagen Finance.

The Polo

Volkswagen Information Service. Telephone: 0800 333 666

Internet: www.volkswagen.co.uk

© Volkswagen Group United Kingdom Limited 2015.

Issue: 2 February 2015. Printed in UK.

PVW900POL



facebook.com/VolkswagenUK



[@UKVolkswagen](https://twitter.com/@UKVolkswagen)



youtube.com/UKVolkswagen