



**PEUGEOT**

# ***208 hatchback***

**3 and 5 Door**



**PEUGEOT**

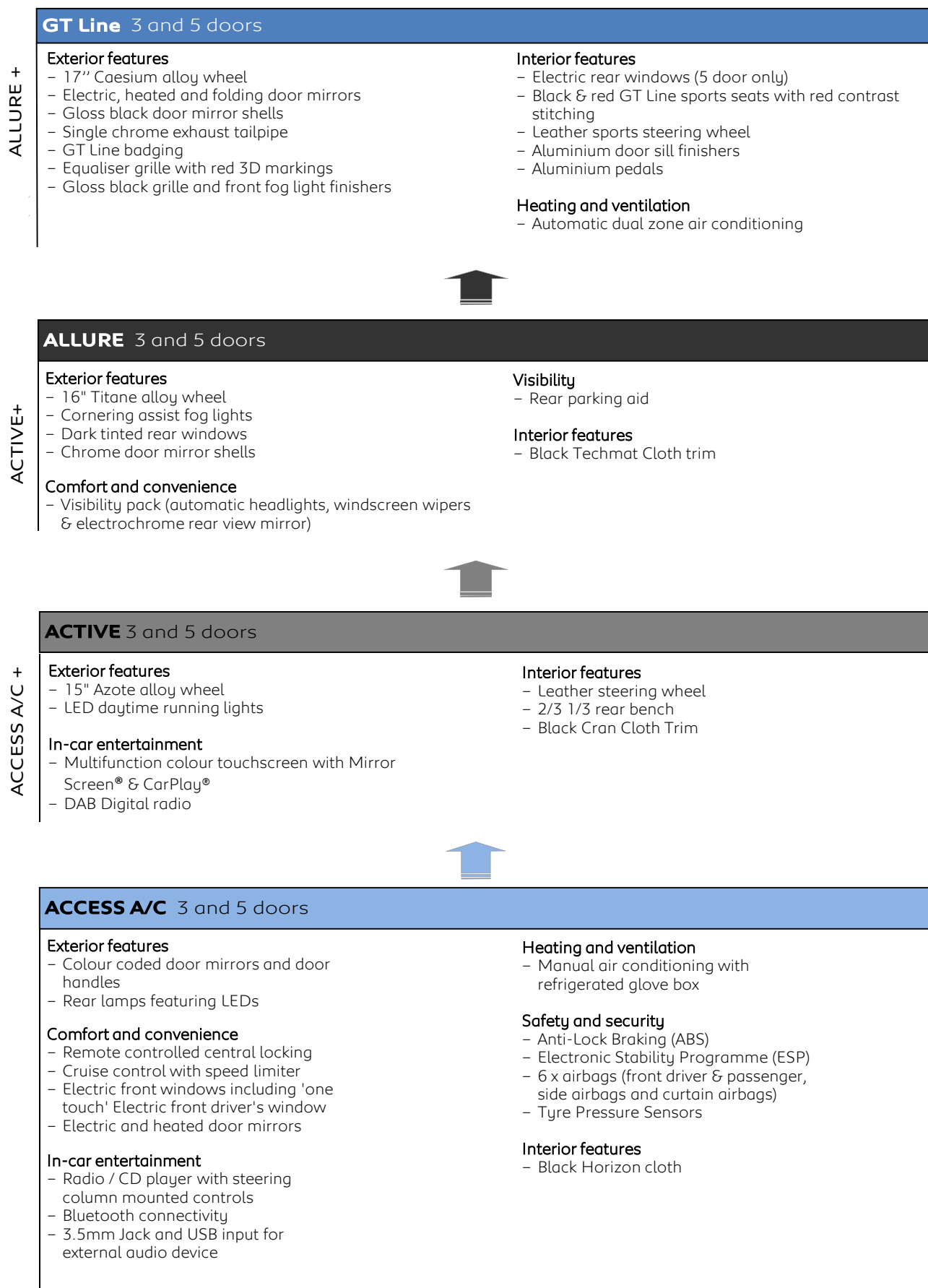


**PRICES, EQUIPMENT AND  
TECHNICAL SPECIFICATIONS**

**1st December 2016 - Version 16**

**Model Year 2016.75**

# 1.1 CHOOSE YOUR LEVEL



# 1.2 CHOOSE YOUR LEVEL

## GTi by Peugeot Sport - 3 doors ONLY

Post factory transformation by Peugeot Sport

### Exterior features

- 18" Lithium matt black alloy wheel
- Matt black door mirrors
- Unique 'GTi' grille with chequered flag design and matt black grille surround
- Matt black wheel arch extensions
- Double chrome exhaust tailpipe - round
- Exterior GTi by Peugeot Sport badging
- Red front brake callipers branded with Peugeot Sport
- Grey rear brake callipers
- Front & rear track both 6mm wider
- Lowered by 10mm vs standard GTi
- Torsen differential (as per RCZ R)
- Specific shock absorbers / springs / wheel alignment

### Safety and security

- Tyre inflation kit in lieu of spare wheel

### Interior features

- Sports seats finished in Alcantara with contrast red stitching – branded with Peugeot Sport
- Specific GTi by Peugeot Sport carpet mats

## GTi Prestige - 3 doors ONLY

### Exterior features

- 17" Carbone onyx black alloy wheel

### In-car entertainment

- Satellite navigation (including 5 years European mapping updates)

### Visibility

- Cornering assist fog lights

### Interior features

- Heated seats
- Cielo panoramic glass roof with ambient lighting

## GTi - 3 doors ONLY

### Exterior features

- 17" Carbone technical grey alloy wheel
- Unique 'GTi' grille with chequered flag design with piano black with chrome inserts
- Sports rear spoiler
- Double chrome exhaust tailpipe
- Chrome door mirrors
- Exterior GTi badging
- Body coloured wheel arch extensions

### Safety and security

- Alarm

### Visibility

- Rear parking aid
- Cornering assist fog lights

### Interior features

- Leather steering wheel & gearknob
- Sports seats finished in full grain black half leather and caro cloth, embossed with GTi logo
- Red LED instrument dial surround
- Red Peugeot lettering on aluminium door sills

# 1.3 CHOOSE YOUR LEVEL

## SPECIAL EDITION

### Active Design 3 and 5 doors

#### Exterior features

- 16" Titane Technical Grey alloy wheel
- Exterior personalisation
- Equaliser grille with stamped 3D effect
- Gloss black grille finisher
- Front fog lights
- Gloss black fog lamp finishers with laser engraved colour accent
- Gloss black door mirrors
- LED daytime running lights

#### Comfort and convenience

- Remote controlled central locking
- Cruise control with speed limiter
- Electric front windows including 'one touch' Electric front driver's window
- Electric and heated door mirrors

#### In-car entertainment

- Multifunction colour touchscreen with Mirror Screen® & CarPlay®
- DAB Digital radio
- Bluetooth connectivity
- 3.5mm Jack and USB input for external audio device

#### Interior features

- Leather steering wheel
- 2/3 1/3 rear bench
- Black Cran Cloth Trim

#### Heating and ventilation

- Manual air conditioning with refrigerated glove box

#### Safety and security

- Anti-Lock Braking (ABS)
- Electronic Stability Programme (ESP)
- 6 x airbags (front driver & passenger, side airbags and curtain airbags)
- Tyre Pressure Sensors

Based on Active level, 208 Active Design has been personalised for extra appeal and this striking exterior styling includes the following specification over and above Active:

- 16" Titane alloy wheels – Technical Grey
- Front fog lights
- Exterior Personalisation
  - Equaliser grille
  - Gloss black door mirrors
  - Door mirror accents
  - Fog light finishers



208 Active Design is available in a limited colour palette: Hurricane Grey, Bianca White, Nera Black, Orange Power & Virtual Blue. These paint colours are split between two exterior personalisation packs Menthol White and Lime Yellow.

### Menthol White Exterior Personalisation



Hurricane Grey



Orange Power



Virtual Blue

### Lime Yellow Exterior Personalisation



Hurricane Grey



Bianca White



Nera Black

# 1.4 CHOOSE YOUR LEVEL

## SPECIAL EDITION

### Allure Premium (5 door only)

#### Exterior features

- 16" Titane Matt Black alloy wheel
- Cornering assist fog lights
- Dark tinted rear windows
- Chrome door mirror shells
- LED daytime running lights

#### Comfort and convenience

- Remote controlled central locking
- Cruise control with speed limiter
- Electric front windows including 'one touch' Electric front driver's window
- Electric and heated door mirrors
- Visibility pack (automatic headlights, windscreen wipers & electrochrome rear view mirror)

#### In-car entertainment

- Multifunction colour touchscreen with Mirror Screen® & CarPlay®
- DAB Digital radio
- Bluetooth connectivity
- 3.5mm Jack and USB input for external audio device
- Satellite navigation (including 5 years European mapping updates)

#### Visibility

- Rear parking aid
- Reversing camera

#### Interior features

- Cielo panoramic glass roof with ambient lighting
- Leather steering wheel
- 2/3 1/3 rear bench
- Black Techmat Cloth trim

#### Heating and ventilation

- Manual air conditioning with refrigerated glove box

#### Safety and security

- Anti-Lock Braking (ABS)
- Electronic Stability Programme (ESP)
- 6 x airbags (front driver & passenger, side airbags and curtain airbags)

208 Allure Premium is available in a limited colour palette, with two solid colours: Hurricane Grey & Bianca White and three metallic colours: Rioja Red, Twilight Blue & Aluminium.

Based on Allure level, 208 Allure Premium offers excellent levels of specification with the following equipment over and above Allure:

- 16" Titane Matt Black Alloy Wheels
- Satellite Navigation
- Reversing Camera
- Cielo Panoramic Glass Roof

#### Solid Colours



Hurricane Grey



Bianca White



16" 'Titane' Matt Black Alloy Wheel

#### Metallic Colours



Rioja Red



Twilight Blue



Aluminium

# 1.5 CHOOSE YOUR LEVEL

## SPECIAL EDITION

### Roland Garros - 5 doors ONLY

#### Exterior features

- Nera Black or Satin White paint
- 16" Titane alloy wheel with orange centre cap surrounds
- Cornering assist fog lights
- Dark tinted rear windows
- LED Daytime Running Lights
- Rear lamps featuring LEDs
- Orange coloured door mirrors
- Roland Garros' badging / detailing

#### Comfort and convenience

- Visibility pack (automatic headlights, windscreen wipers & electrochromic rear view mirror)
- Remote controlled central locking
- Cruise control with speed limiter
- Electric, heated and folding door mirrors
- Electric front windows including 'one touch' Electric front driver's window
- Rear electric windows

#### In-car entertainment

- Multifunction colour touchscreen with Mirror Screen® & CarPlay®
- 3.5mm Jack and USB input for external audio de
- Bluetooth connectivity
- DAB Digital radio
- Satellite navigation

#### Visibility

- Rear parking aid
- Reversing camera

#### Interior features

- Cielo panoramic glass roof with ambient lighting
- Roland Garros trim with orange contrast stitching
- Orange seatbelts
- Roland Garros carpet mats
- Passenger seat height adjustment
- Leather steering wheel
- 2/3 1/3 rear bench

#### Safety and security

- Anti-Lock Braking (ABS)
- Electronic Stability Programme (ESP)
- 6 x airbags (front driver & passenger, side airbags and curtain airbags)



# 2.1 CHOOSE YOUR VERSION

Manufacturer's recommended retail prices Peugeot 208 Hatch 3 door price list

	ENGINE	HP	VERSION TITRE CODE (DIALOG description)	CO <sub>2</sub> g/km	BASIC MRRP	VAT (£)	TOTAL MRRP	P11D VALUE	2016/17 BIK %	ON THE ROAD MRRP
<b>ACCESS A/C</b>	1.2L PureTech 68	68	1PIAA3FQA5T0LRF1 (208 ACC A/C PT68 3DR)	108	9,903.33	1,980.67	11,884.00	12,545.00	17	12,600.00
	1.6L BlueHdi 75	75	1PIAA3FKM5T0LRF1 (208 ACC A/C BHD175 3DR)	90	11,695.00	2,339.00	14,034.00	14,695.00	18	14,750.00
<b>ACTIVE</b>	1.2L PureTech 68	68	1PIAA3LQA5T0A0F1 (208 ACT PT68 3DR)	108	10,570.00	2,114.00	12,684.00	13,345.00	17	13,400.00
	1.2L PureTech 82	82	1PIAA3LKQ5T0A0F1 (208 ACT PT82 3DR)	104	10,986.67	2,197.33	13,184.00	13,845.00	17	13,900.00
	1.2L PureTech 82 ETG5 S&S	82	1PIAA3LKQVTOA0F1 (208 ACT PT82 ETG 3DR)	97	11,674.17	2,334.83	14,009.00	14,670.00	16	14,725.00
	1.6L BlueHdi 75	75	1PIAA3LKM5T0A0F1 (208 ACT BHD175 3DR)	90	12,361.67	2,472.33	14,834.00	15,495.00	18	15,550.00
	1.6L BlueHdi 75 S&S	75	1PIAA3LKMJTOA0F1 (208 ACT BHD175 3DR SS)	79	12,528.33	2,505.67	15,034.00	15,695.00	18	15,750.00
<b>ACTIVE DESIGN MENTHOL</b>	1.2L PureTech 82	82	1PIAA3LKQ5T09WF0 (208 DES MENT 3D)	104	11,057.50	2,211.50	13,269.00	13,930.00	17	13,985.00
<b>ACTIVE DESIGN LIME</b>	1.2L PureTech 82	82	1PIAA3LKQ5T09XF0 (208 DES LIME 3D)	104	11,057.50	2,211.50	13,269.00	13,930.00	17	13,985.00
<b>ALLURE</b>	1.2L PureTech 82	82	1PIAA3HKQ5T0A0F1 (208 ALL PT82 3DR)	104	11,986.67	2,397.33	14,384.00	15,045.00	17	15,100.00
	1.2L PureTech 82 ETG5 S&S	82	1PIAA3HKQVTOA0F1 (208 ALL PT82 ETG 3DR)	97	12,674.17	2,534.83	15,209.00	15,870.00	16	15,925.00
	1.2L PureTech 110 S&S	110	1PIAA3HCQJTOA0F1 (208 ALL PT110 3DR)	99	13,070.00	2,614.00	15,684.00	16,345.00	16	16,400.00
	1.2L PureTech 110 EAT6 S&S	110	1PIAA3HCQQT0A0F1 (208 ALL PT110A 3DR)	104	13,903.33	2,780.67	16,684.00	17,345.00	17	17,400.00
	1.6L BlueHdi 75	75	1PIAA3HKM5T0A0F1 (208 ALL BHD175 3DR)	90	13,361.67	2,672.33	16,034.00	16,695.00	18	16,750.00
	1.6L BlueHdi 75 S&S	75	1PIAA3HKMJTOA0F1 (208 ALL BHD175 3DR SS)	79	13,528.33	2,705.67	16,234.00	16,895.00	18	16,950.00
	1.6L BlueHdi 100	99	1PIAA3HKE5T0A0F1 (208 ALL BHD1100 3DR)	90	13,861.67	2,772.33	16,634.00	17,295.00	18	17,350.00
<b>GT LINE</b>	1.2L PureTech 110 S&S	110	1PIAA3TCQJTOA0F1 (208 GTL PT110 3DR)	99	13,570.00	2,714.00	16,284.00	16,945.00	16	17,000.00
	1.2L PureTech 110 EAT6 S&S	110	1PIAA3TCQQT0A0F1 (208 GTL PT110A 3DR)	104	14,403.33	2,880.67	17,284.00	17,945.00	17	18,000.00
	1.6L THP 165 S&S	165	1PIAA3TKHKT0A0F1 (208 GTL THP165 3DR)	129	14,778.33	2,955.67	17,734.00	18,395.00	22	18,450.00
	1.6L BlueHdi 100	99	1PIAA3TKE5T0A0F1 (208 GTL BHD1100 3DR)	90	14,361.67	2,872.33	17,234.00	17,895.00	18	17,950.00
	1.6L BlueHdi 120 S&S	120	1PIAA3TKDKT0A0F1 (208 GTL BHD1120 3DR)	94	14,861.67	2,972.33	17,834.00	18,495.00	18	18,550.00
<b>GTi</b>	1.6L THP 208 S&S	208	1PIAA3WKJKT0A0F1 (208 GTi THP208)	125	16,111.67	3,222.33	19,334.00	19,995.00	22	20,050.00
<b>GTi Prestige</b>	1.6L THP 208 S&S	208	1PIAA3WKJKT09SF1 (208 GTi PRESTIGE THP208)	125	16,820.00	3,364.00	20,184.00	20,845.00	22	20,900.00
<b>GTi by Peugeot Sport</b>	1.6L THP 208 S&S	208	1PIAA3WKJKT002F1 (208 GTi 30)	125	18,486.67	3,697.33	22,184.00	22,845.00	22	22,900.00

3 DOOR

# 2.1 CHOOSE YOUR VERSION

Manufacturer's recommended retail prices Peugeot 208 Hatch 5 door price list

		ENGINE	HP	VERSION TITRE CODE (DIALOG description)	CO <sub>2</sub> g/km	BASIC MRRP	VAT (£)	TOTAL MRRP	P11D VALUE	2016/17 BIK %	ON THE ROAD MRRP
5 DOOR	ACCESS A/C	1.2L PureTech 68	68	1PIAA5FQA5T0LRF1 (208 ACC A/C PT68 5DR)	108	10,403.33	2,080.67	12,484.00	13,145.00	17	13,200.00
		1.6L BlueHDi 75	75	1PIAA5FKM5T0LRF1 (208 ACC A/C BHD175 5D)	90	12,195.00	2,439.00	14,634.00	15,295.00	18	15,350.00
	ACTIVE	1.2L PureTech 68	68	1PIAA5LQA5T0A0F1 (208 ACT PT68 5DR)	108	11,070.00	2,214.00	13,284.00	13,945.00	17	14,000.00
		1.2L PureTech 82	82	1PIAA5LKQ5T0A0F1 (208 ACT PT82 5DR)	104	11,486.67	2,297.33	13,784.00	14,445.00	17	14,500.00
		1.2L PureTech 82 ETG5 S&S	82	1PIAA5LKQVTOA0F1 (208 ACT PT82 ETG 5DR)	97	12,174.17	2,434.83	14,609.00	15,270.00	16	15,325.00
		1.6L BlueHDi 75	75	1PIAA5LKM5T0A0F1 (208 ACT BHD175 5DR)	90	12,861.67	2,572.33	15,434.00	16,095.00	18	16,150.00
		1.6L BlueHDi 75 S&S	75	1PIAA5LKMJTOA0F1 (208 ACT BHD175 5DR SS)	79	13,028.33	2,605.67	15,634.00	16,295.00	18	16,350.00
	ACTIVE DESIGN MENTHOL	1.2L PureTech 82	82	1PIAA5LKQ5T09WF0 (208 DES MENT 5D)	104	11,557.50	2,311.50	13,869.00	14,530.00	17	14,585.00
	ACTIVE DESIGN LIME	1.2L PureTech 82	82	1PIAA5LKQ5T09XF0 (208 DES LIME 5D)	104	11,557.50	2,311.50	13,869.00	14,530.00	17	14,585.00
	ALLURE	1.2L PureTech 82	82	1PIAA5HKQ5T0A0F1 (208 ALL PT82 5DR)	104	12,486.67	2,497.33	14,984.00	15,645.00	17	15,700.00
		1.2L PureTech 82 ETG5 S&S	82	1PIAA5HKQVTOA0F1 (208 ALL PT82 ETG 5DR)	97	13,174.17	2,634.83	15,809.00	16,470.00	16	16,525.00
		1.2L PureTech 110 S&S	110	1PIAA5HCQJTOA0F1 (208 ALL PT110 5DR)	99	13,570.00	2,714.00	16,284.00	16,945.00	16	17,000.00
		1.2L PureTech 110 EAT6 S&S	110	1PIAA5HCQQT0A0F1 (208 ALL PT110A 5DR)	104	14,403.33	2,880.67	17,284.00	17,945.00	17	18,000.00
		1.6L BlueHDi 75	75	1PIAA5HKM5T0A0F1 (208 ALL BHD175 5DR)	90	13,861.67	2,772.33	16,634.00	17,295.00	18	17,350.00
		1.6L BlueHDi 75 S&S	75	1PIAA5HKMJTOA0F1 (208 ALL BHD175 5DR SS)	79	14,028.33	2,805.67	16,834.00	17,495.00	18	17,550.00
		1.6L BlueHDi 100	99	1PIAA5HKE5T0A0F1 (208 ALL BHD1100 5DR)	90	14,361.67	2,872.33	17,234.00	17,895.00	18	17,950.00
	ALLURE PREMIUM	1.2L PureTech 82	82	1PIAA5HKQ5T09RF0 (208 ALL PREMIUM)	104	12,915.83	2,583.17	15,499.00	16,160.00	17	16,215.00
	ROLAND GARROS	1.2L PureTech 110 S&S	110	1PIAA5HCQJT03JF0 (208 RG PT110 5DR)	99	14,624.17	2,924.83	17,549.00	18,210.00	16	18,265.00
		1.2L PureTech 110 EAT6 S&S	110	1PIAA5HCQQT03JF0 (208 RG PT110A 5DR)	104	15,457.50	3,091.50	18,549.00	19,210.00	17	19,265.00
		1.6L BlueHDi 100	99	1PIAA5HKE5T03JF0 (208 RG BHD1100 5DR)	90	15,415.83	3,083.17	18,499.00	19,160.00	18	19,215.00
GT LINE	1.2L PureTech 110 S&S	110	1PIAA5TCQJTOA0F1 (208 GTL PT110 5DR)	99	14,070.00	2,814.00	16,884.00	17,545.00	16	17,600.00	
	1.2L PureTech 110 EAT6 S&S	110	1PIAA5TCQQT0A0F1 (208 GTL PT110A 5DR)	104	14,903.33	2,980.67	17,884.00	18,545.00	17	18,600.00	
	1.6L THP 165 S&S	165	1PIAA5TKHKT0A0F1 (208 GTL THP165 5DR)	129	15,278.33	3,055.67	18,334.00	18,995.00	22	19,050.00	
	1.6L BlueHDi 100	99	1PIAA5TKE5T0A0F1 (208 GTL BHD1100 5DR)	90	14,861.67	2,972.33	17,834.00	18,495.00	18	18,550.00	
	1.6L BlueHDi 120 S&S	120	1PIAA5TKDKTOA0F1 (208 GTL BHD1120 5DR)	94	15,361.67	3,072.33	18,434.00	19,095.00	18	19,150.00	



### 3.1 TECHNOLOGY PAGE

#### PureTech Petrol Engines

Designed for drivability and performance, PureTech Petrol engines combine efficiency with cutting-edge technology.

They take the best that the market has to offer and find the perfect balance between torque and power at low revs. This advance in technology generates savings in fuel consumption and reduces CO<sub>2</sub> emissions compared to a vehicle with equivalent power and torque.

Combined with the new automatic EAT6 gearbox, the 1.2 PureTech 110 EAT6 S&S turbo version emits CO<sub>2</sub> emissions of only 104 g/km, making it the benchmark for automatic petrol engines in the segment.

The 208's 1.2L PureTech 110 engine was awarded 'International Engine of the Year 2016' in the 1.0L to 1.4L category by a panel of 65 industry experts.



#### Reversing Camera / Rear Parking Aid / Park Assist

The reversing camera automatically activates when you select reverse gear and lets you view the area behind the car as you manoeuvre. It comes with rear parking aid as standard but can also be ordered with Park Assist for added safety and convenience.

The Park Assist system assesses the space available to ensure that your car will fit. Ultrasonic sensors and steering management take over to manoeuvre in and out of the parking space for you.

Acceleration, braking, gear changes and use of the clutch in a manual transmission are left in your control. As you manoeuvre, the system gives you visual and audio information to ensure your safety.



#### Peugeot Connect SOS & Assistance

Peugeot Connect SOS is now in use in most major European countries, including the UK, and is technology that could prove vital in an emergency.

Automatic emergency call: if the airbags inflate or the seat belt pretensioners are triggered, the vehicle automatically makes an emergency call on behalf of the driver. Peugeot Connect SOS then locates the vehicle, establishes telephone communication with its occupants and arranges for the appropriate emergency service to be dispatched.

Manual emergency call: whether the victim or the witness of an emergency situation, the driver can call Peugeot Connect SOS quickly by pressing the SOS button located on the dashboard (and holding for 3 seconds).



#### BlueHDi Diesel Engines

BlueHDi engines combine high performance, impressive fuel economy and low CO<sub>2</sub> emissions.

Every diesel version of the Peugeot 208 emits under 95 g/km of CO<sub>2</sub> and achieves up to 94.2 mpg on a combined drive cycle.

This market-leading range of 1.6 BlueHDi diesel engines is also available with Stop & Start technology.



#### Active City Brake

Active City Brake is a new technology which makes it possible to avoid an accident or reduce its severity if the driver fails to react.

It works in urban conditions at speeds of less than 20 mph. A short range sensor is fitted to the top of the windscreen and can detect other vehicles that are driving in the same direction or stationary.

This will automatically trigger an emergency brake to stop the vehicle and avoid a collision entirely or limit the consequences of an accident by reducing the speed of impact.



#### 7" Touchscreen & Satellite Navigation



Perfectly positioned, the 7" touch screen gives you access to a wide range of functions, including music streaming, USB connectivity and hands-free Bluetooth calling.

Plus, the interactive and easy to use Satellite Navigation system will take the stress out of any journey\*.

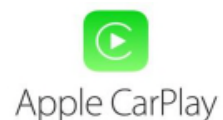
\*Standard, optional or unavailable according to version.

#### Mirror Screen® & Apple CarPlay™

Mirror Screen® is a technology which mirrors compatible apps from your smartphone and displays them on the touchscreen. It is accessed via MirrorLink® which works with compatible android phones and CarPlay® which is compatible with iPhone5 and above.

Mirror Link® will display compatible apps on the touchscreen but it does not offer voice control functionality. Handsfree calls can be made on android phones using Bluetooth.

Apple CarPlay™ does mirror compatible apps but it also features voice control through Siri which allows phone calls, text messages, music and maps to be used without the need to take eyes off the road.



Note: Mirror Screen® is standard on all 208s with a touchscreen.

# 4.1 CHOOSE YOUR OPTIONS

ACCESS A/C	ACTIVE	ACTIVE DESIGN	ALLURE	ALLURE PREMIUM	ROLAND GARROS	GT LINE	GTI	GTI Prestige	GTI by Peugeot Sport	Basic RRP £ Excluding VAT	VAT @ 20%	Total RRP £ Including VAT	Notes
------------	--------	---------------	--------	----------------	---------------	---------	-----	--------------	----------------------	---------------------------	-----------	---------------------------	-------

Paint	Bianca White (solid point)	WPP0	<input type="radio"/>	<input type="radio"/>	<input type="radio"/>	<input type="radio"/>	<input type="radio"/>	<input type="radio"/>	<input checked="" type="radio"/>	<input checked="" type="radio"/>	208.33	41.67	<b>250.00</b>	Standard on GT Line 1.6L THP 165
	Metallic Paint	0MM0	<input type="radio"/>	<input type="radio"/>	<input type="radio"/>	<input type="radio"/>	<input checked="" type="radio"/>	<input type="radio"/>	<input type="radio"/>	<input checked="" type="radio"/>	412.50	82.50	<b>495.00</b>	
	Pearlescent Paint	0MM6				<input type="radio"/>	<input checked="" type="radio"/>	<input type="radio"/>	<input type="radio"/>		537.50	107.50	<b>645.00</b>	Roland Garros is available in Nera Black or Satin White at no extra cost.
	Pearlescent Paint	0MM6								<input type="radio"/>	125.00	25.00	<b>150.00</b>	
	Textured Paint	0MM7		<input type="radio"/>		<input type="radio"/>		<input type="radio"/>	<input type="radio"/>	<input type="radio"/>	537.50	107.50	<b>645.00</b>	Brings in chrome door mirrors and chrome window trim on Active and chrome door handles on all levels. Incompatible with roof & bonnet transfers.
	Textured Paint	0MM7								<input type="radio"/>	125.00	25.00	<b>150.00</b>	
	Coupe Franche	M29V								<input type="radio"/>	787.50	157.50	<b>945.00</b>	

Personalisation	16" 'Titane' alloy wheel upgrade ZHEW - Petrol / ZH44 - Diesel	ZHEW / ZH44		<input type="radio"/>									166.67	33.33	<b>200.00</b>	Not available on ETG and 1.0L	
	16" 'Titane' alloy wheel personalisation: Technical Grey ZHEX - Petrol / ZHAJ - Diesel	ZHEX / ZHAJ			<input checked="" type="radio"/>	<input type="radio"/>		<input checked="" type="radio"/>						83.33	16.67	<b>100.00</b>	Orange wheel centre cap surrounds on Roland Garros
	16" 'Titane' alloy wheel personalisation: Gloss Black with white laser engraving ZHEZ - Petrol / ZHAP - Diesel	ZHEZ / ZHAP				<input type="radio"/>								83.33	16.67	<b>100.00</b>	
	17" 'Oxygen' alloy wheel upgrade ZHFA - Petrol / ZH5G - Diesel	ZHFA / ZH5G				<input type="radio"/>								208.33	41.67	<b>250.00</b>	Not available on 1.2 PureTech 82 manual and ETG or Allure BlueHDi 75 S&S
	17" 'Carbone' alloy wheel personalisation: Onyx Black	ZH3U							<input type="radio"/>	<input checked="" type="radio"/>				83.33	16.67	<b>100.00</b>	
	17" 'Carbone' alloy wheel personalisation: Storm Grey	ZHAT							<input type="radio"/>					83.33	16.67	<b>100.00</b>	
	Menthol White personalisation - Exterior Pack	PDCM		<input type="radio"/>	<input checked="" type="radio"/>									183.33	36.67	<b>220.00</b>	Includes front fog lights See page 6.1
	Menthol White personalisation - Exterior Pack	PDCM				<input type="radio"/>								125.00	25.00	<b>150.00</b>	See page 6.1
	Menthol White personalisation - Interior Pack	OOFN		<input type="radio"/>										358.33	71.67	<b>430.00</b>	Includes passenger seat height adjustment See page 6.2
	Menthol White personalisation - Interior Pack	OOFN				<input type="radio"/>								291.67	58.33	<b>350.00</b>	Includes passenger seat height adjustment See page 6.2
	Lime Yellow personalisation - Exterior Pack	PDCN		<input type="radio"/>	<input checked="" type="radio"/>									183.33	36.67	<b>220.00</b>	Includes front fog lights See page 6.1
	Lime Yellow personalisation - Exterior Pack	PDCN				<input type="radio"/>								125.00	25.00	<b>150.00</b>	See page 6.1
	Lime Yellow personalisation - Interior Pack	OPFY		<input type="radio"/>										358.33	71.67	<b>430.00</b>	Includes passenger seat height adjustment See page 6.2
	Lime Yellow personalisation - Interior Pack	OPFY				<input type="radio"/>								291.67	58.33	<b>350.00</b>	Includes passenger seat height adjustment See page 6.2
	Roof & bonnet transfers - Daimiers	XI42							<input type="radio"/>	<input type="radio"/>				208.33	41.67	<b>250.00</b>	Not compatible with textured paints

● Standard    ○ Option at extra cost

## 4.2 CHOOSE YOUR OPTIONS

			ACCESS A/C	ACTIVE	ACTIVE DESIGN	ALLURE	ALLURE PREMIUM	ROLAND GARROS	GT LINE	GTI	GTI Prestige	GTI by Peugeot Sport	Basic RRP £ Excluding VAT	VAT @ 20%	Total RRP £ Including VAT	Notes
Options	Electric Folding Door mirrors	HU02		○		○				●	●	●	83.33	16.67	100.00	
	Electric Pack: rear electric windows + electric folding door mirrors	LE05				○			●				133.33	26.67	160.00	5 door only
	Automatic dual zone air conditioning	RE07				○			●	●	●	●	241.67	48.33	290.00	
	Visibility pack: Automatic Lights and wiper with Electrochrome rear view mirror	VV33		○		●	●	●	●	●	●	●	150.00	30.00	180.00	
	Active City Brake	D401		○									358.33	71.67	430.00	Includes Visibility Pack (automatic lights and wipers with electrochrome rear view mirror)
	Active City Brake	D401				○			○	○		○	208.33	41.67	250.00	
	Front central armrest with storage	JB01		○		○			○	○	○		58.33	11.67	70.00	
	Alarm	AB08	○	○		○			○	●	●	●	175.00	35.00	210.00	
	Front fog lights	PR01		○	●	●	●	●	●	●	●	●	58.33	11.67	70.00	Linked to exterior personalisation
	Cielo Panoramic Glass Roof	OK01				○	●	●	○	○	●		333.33	66.67	400.00	
	Rear Parking Aid	UB01		○		●	●	●	●	●	●	●	225.00	45.00	270.00	
	Reversing Camera - includes Rear Parking Aid	UB09		○									391.67	78.33	470.00	
	Reversing Camera	UB09				○	●	●	○	○		○	166.67	33.33	200.00	
	Park Assist (automatic parallel parking system)	UB08				○			○	○			250.00	50.00	300.00	Includes front & rear parking aid - not available with exterior personalisation
Park Assist and Reversing Camera	UB10				○			○	○			416.67	83.33	500.00	Includes front & rear parking aid - not available with exterior personalisation	
IN CAR ENTERTAINMENT	Single CD unit	Dealer fit		○	○	○	○	○	○	○	○		Contact your dealer for current pricing		Dealer Fit ONLY	
	Satellite Navigation with DAB digital radio	WLQ5		○		○	●	●	○	○	●	○	375.00	75.00	450.00	Includes 5 years European mapping updates
	Peugeot Connect SOS and Assistance with DAB digital radio (non Sat Nav version)	WLQ3		○		○			○	○		○	208.33	41.67	250.00	
	Peugeot Connect SOS and Assistance with DAB digital radio (Sat Nav std)	WLQ8									○		250.00	50.00	300.00	Includes 5 years European mapping updates
	Satellite Navigation and Peugeot Connect SOS and Assistance with DAB digital radio	WLQ8		○		○			○	○		○	583.33	116.67	700.00	Includes 5 years European mapping updates
INTERIOR TRIM	Midnight Black Leather Trim	3UFX	Allure									925.00	185.00	1,110.00	Includes heated seats, passenger seat height adjustment, electrically operated and heated door mirrors with electric folding mirrors, rear electric windows (5 door only), aluminium effect on door sills and front central armrest with storage.	

● Standard ○ Option at extra cost

# 5.1 KNOW YOUR EQUIPMENT

		ACCESS A/C	ACTIVE	ACTIVE DESIGN	ALLURE	ALLURE PREMIUM	ROLAND GARROS	GT LINE	GTi	GTi Prestige	GTi by Peugeot Sport	Notes	
SAFETY & SECURITY	ESP with Hill Assist	●	●	●	●	●	●					Only available on ETG and Automatic versions	
	Speed Alarm / Speed Limiter	●	●	●	●	●	●	●	●	●	●		
	ABS with Electronic Brake Force Distributor (EBFD) & Emergency Brake Assist (EBA)	●	●	●	●	●	●	●	●	●	●		
	Automatic Hazard Light Activation	●	●	●	●	●	●	●	●	●	●		
	Child Safety door locking	●	●	●	●	●	●	●	●	●	●		
	ESP	●	●	●	●	●	●	●	●	●	●	Can be deactivated on GTi	
	Seatbelt alarm	●	●	●	●	●	●	●	●	●	●		
	Driver and Passenger airbag with Passenger airbag deactivation switch	●	●	●	●	●	●	●	●	●	●		
	Front side airbags	●	●	●	●	●	●	●	●	●	●		
	Front and rear curtain airbags	●	●	●	●	●	●	●	●	●	●		
	Thatcham approved Cat 2 immobiliser	●	●	●	●	●	●	●	●	●	●		
	Rear seat 3 point ISOFIX location mounts x 2	●	●	●	●	●	●	●	●	●	●		
	3 x 3-point rear seat belts	●	●	●	●	●	●	●	●	●	●		
	Tyre inflation kit											●	
	Space saver spare wheel	●	●		●		●	●					BlueHDi engines ONLY. Speed limited to under 50 mph when space saver spare wheel is fitted.
Full size spare wheel							*	●	●			Petrol engines ONLY. *GT Line 1.6L THP 165 S&S	
15" steel spare wheel	●	●	●	●	●	●	●					Petrol engines ONLY. Excludes GT Line 1.6 THP 165 S&S. Speed limited to under 50 mph when 15" spare wheel is fitted to a car with 16" or 17" wheels.	
Deadlocking	●	●	●	●	●	●	●	●	●	●	●		
Tyre pressure sensors	●	●	●	●	●	●	●	●	●	●	●		
Ultrasonic alarm	○	○		○			○	●	●	●	●		
COMFORT & CONVENIENCE	Electric Rear Windows				○		●	●				Linked to leather upgrade & Electric pack on Allure	
	Tinted rear and rear side windows				●	●	●	●	●	●	●		
	Rear parking aid		○		●	●	●	●	●	●	●		
	Reversing camera		○		○	●	●	○	○		○		
	Park Assist (automatic parallel parking system)				○			○	○				
	Visibility Pack - Auto headlights, Auto wipers and electrochrome rear view mirror		○		●	●	●	●	●	●	●		
	Cruise control	●	●	●	●	●	●	●	●	●	●	●	Linked to speed alarm / speed limiter
	Electrically assisted power steering	●	●	●	●	●	●	●	●	●	●	●	
	Height and reach adjustable steering wheel	●	●	●	●	●	●	●	●	●	●	●	
	Electric front windows	●	●	●	●	●	●	●	●	●	●	●	
'One touch' Electric front driver's window	●	●	●	●	●	●	●	●	●	●	●		
12v power socket	●	●	●	●	●	●	●	●	●	●	●		
Remote control central locking	●	●	●	●	●	●	●	●	●	●	●		
IN CAR ENTERTAINMENT	Radio / CD Player	●											
	7" multifunction colour touch screen		●	●	●	●	●	●	●	●	●	MirrorScreen® functionality is available with compatible smart phones. Please consult <a href="http://www.mirrorlink.com">www.mirrorlink.com</a> for a list of enabled android phones - compatibility is based on the phone providers' original operating system. Apple CarPlay™ is compatible with iPhone 5/c/s and 6/Plus/s/s Plus.	
	External CD player upgrade - Dealer fit ONLY		○	○	○		○	○	○	○	○		
	DAB digital radio upgrade		●	●	●	●	●	●	●	●	●		
	Bluetooth	●	●	●	●	●	●	●	●	●	●		
	Satellite Navigation (including 5 years European mapping updates)		○		○	●	●	○	○	●	○		
	Peugeot Connect SOS and Assistance	○	○		○			○	○		○		
	Steering column remote controls	●											
	Steering wheel mounted controls	●	●	●	●	●	●	●	●	●	●	●	
3.5mm jack for external audio device & USB socket	●	●	●	●	●	●	●	●	●	●	●		
2 front speakers plus 2 tweeters	●												
2 front and 2 rear speakers plus 2 tweeters	●	●	●	●	●	●	●	●	●	●	●		
HEATING & VENTILATION	Manual air conditioning with glove box vent	●	●	●	●	●	●						
	Automatic Dual Zone Air Conditioning				○			●	●	●	●		
KEY INSTRUMENTS	Instrument panel LCD screen display							Colour					
	LED instrument dial surround							Red	Red	Red			
	Large multifunction (7") colour Touch Screen		●	●	●	●	●	●	●	●	●		
	External temperature gauge	●	●	●	●	●	●	●	●	●	●		
	Gear shift indicator	●	●	●	●	●	●	●	●	●	●		
	Trip computer	●	●	●	●	●	●	●	●	●	●		

● Standard ○ Option at extra cost

# 5.2 KNOW YOUR EQUIPMENT

	ACCESS A/C	ACTIVE	ACTIVE DESIGN	ALLURE	ALLURE PREMIUM	ROLAND GARROS	GT LINE	GTi	GTi Prestige	GTi by Peugeot Sport	Notes
<b>INTERIOR FEATURES / SEATING</b>	Leather trimmed steering wheel		●	●	●	●	●	●	●	●	
	Cielo roof with ambient lighting			○	●	●	○	○	●	●	
	Passenger and driver sunvisors with vanity mirrors	●	●	●	●	●	●	●	●	●	
	Leather and chrome gear knob						●	●	●	●	
	Aluminium effect on sills				○	●	●	●	●	●	Sills linked to leather option on Allure
	Aluminium effect on pedals					●	●	●	●	●	
	Cloth interior trim	●	●	●	●						
	Sports seats with Midnight Black full leather interior				○						
	Sports seats with Roland Garros trim and orange contrast stitching					●					
	Sports seats with GT Line trim						●				
<b>EXTERIOR FEATURES / WHEELS</b>	Rear Sports Spoiler - Colour coded							●	●	●	
	Metallic paint	○	○	○	○	●	○	○	○	●	
	Solid Point	●	●	●	●	●	●	●	●		
	Textured paint		○		○		○	○	○	○	
	Pearlescent Point				○	●	○	○	○	○	Roland Garros is available in Nera Black or Satin White at no extra cost.
	Coupe Franche Paint									○	
	Colour coded door mirrors	●	●							●	GTi by PSP ONLY colour coded if Rioja Red, Satin White or Nera Black
	Chrome door mirrors		○		●	●		●	●		Linked to textured paint on Active
	Black door mirrors			●			●			●	
	Body coloured wheel arch extensions							●	●		
Black wheel arch extensions									●		
Single chrome exhaust tailpipe						●					
Double chrome exhaust tailpipe							●	●	●		
Steel wheel with wheel trims	●									See page 6.3	
Alloy wheels		●		●		●	●	●	●	See page 6.3	
Alloy wheels Personalisation			●	○	●		○	●		See page 6.3	
<b>LIGHTING &amp; VISIBILITY</b>	Daytime Running Lights	●									
	LED Daytime Running lights		●	●	●	●	●	●	●	●	
	Static fog lights		○	●							Linked to exterior personalisation
	Cornering assist fog lights				●	●	●	●	●	●	
	LED Indicators							●	●	●	
	Rear 'Boomerang' effect LED lights	●	●	●	●	●	●	●	●	●	
	Rear fog light	●	●	●	●	●	●	●	●	●	
	LED interior lights with illuminated footwell						●	●	●	●	
	'Follow me home' lighting	●	●	●	●	●	●	●	●	●	
	Electrically operated and heated door mirrors	●	●	●	●	●					
Electrically operated and heated door mirrors with electric folding operation				○		●	●	●	●	Linked to leather option & Electric pack on Allure	
Rear wash wipe	●	●	●	●	●	●	●	●	●		
<b>SEATING</b>	Mono rear bench	●									
	2/3 1/3 rear bench		●	●	●	●	●	●	●	●	
	Driver seat height adjustment	●	●	●	●	●	●	●	●	●	
	Passenger seat height adjustment		○		○		●	●	●	●	Linked to interior personalisation and leather option on Active and Allure
	Rear head restraints x 3	●	●	●	●	●	●	●	●	●	
	Heated seats				○				●		Linked to leather upgrade on Allure
	Front central armrest with storage		○		○		○	○			Linked to leather option on Allure

● Standard ○ Option at extra cost

## 6.1 CHOOSE YOUR COLOUR

● = Standard at no cost ○ = Option at extra cost

Body type	Specification level	SOLID COLOUR		PEARLESCENT COLOUR (Cost Option)	METALLIC COLOURS (Cost Option)							TEXTURED COLOURS (Cost Option)			TWO TONE (Cost Option)
		Hurricane Grey P09G	Bianca White (Cost Option) POWP	Satin White M6FC	Nera Black M09V	Orange Power M04T	Virtual Blue M0K4	Shark Grey M09P	Aluminium M0ZR	Rioja Red M0PY	Twilight Blue M0KU	Ice Grey M7JD	Ice Silver M7WW	Ice White M7SJ	Coupe Franche M29V
3 & 5 Doors	ACCESS A/C	●	○		○			○	○	○					
3 & 5 Doors	ACTIVE	●	○		○		○	○	○	○	○	○	○		
3 & 5 Doors	ACTIVE DESIGN	●	○		○	○	○								
	Exterior personalisation	Menthol / Lime	Lime Yellow		Lime Yellow	Menthol White	Menthol White								
3 & 5 Doors	ALLURE	●	○	○	○	○	○	○	○	○	○	○	○	○	
5 Doors	ALLURE PREMIUM	●	○						○	○	○				
5 Doors	ROLAND GARROS			●	●										
3 & 5 Doors	GT LINE	●	○	○	○		○	○	○	○		○	○		Bianca White is standard on 1.6L THP 165 (Hurricane Grey & Virtual Blue are incompatible with this version)
3 Doors	GTi & GTi Prestige		●	○	○					○		○	○		
3 Doors	GTi by PSP			○	●	●				●		○	○	○	

Note: Ice White will be available on GT Line 1.6L THP 165, GTi, GTi Prestige & GTi by PSP from October build

### COLOURS



Hurricane Grey



Bianca White



Satin White



Nero Black



Orange Power



Virtual Blue



Shark Grey



Aluminium



Rioja Red



Twilight Blue



Ice Grey



Ice Silver



Ice White



Coupe Franche



Roland Garros - Satin White



Roland Garros - Nero Black

### EXTERIOR PERSONALISATION: ACTIVE & ALLURE

		SOLID COLOUR		PEARLESCENT (Cost Option)	METALLIC COLOURS (Cost Option)							TEXTURED COLOURS (Cost Option)			TWO TONE (Cost Option)
		Hurricane Grey P09G	Bianca White (Cost Option) POWP	Satin White M6FC	Nera Black M09V	Orange Power M04T	Virtual Blue M0K4	Shark Grey M09P	Aluminium M0ZR	Rioja Red M0PY	Twilight Blue M0KU	Ice Grey M7JD	Ice Silver M7WW	Ice White M7SJ	Coupe Franche M29V
3 & 5 Doors	Menthol White exterior personalisation	PDCM	○	○	○	○		○		○	○	○		○	
	Lime Yellow exterior personalisation	PDCN	○	○	○	○		○					○	○	

#### Exterior personalisation includes:

- Equaliser grille with stamped 3D effect
- Gloss black grille finisher
- Front fog lights (on Active)
- Gloss black front fog lamp finishers with laser engraved colour accent
- Coloured Peugeot lettering front and rear
- Gloss black door mirror shells with colour accents

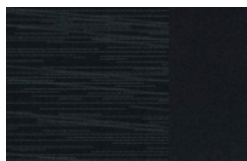


## 6.2 CHOOSE YOUR UPHOLSTERY

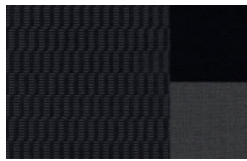
● = Standard at no cost ○ = Option at extra cost

Body type	Specification level	Interior description	Trim code	Primary / secondary colour	Primary / secondary Material	
3 & 5Doors	ACCESS A/C	Black Horizon Trim	7AFX	Black	Cloth	●
3 & 5Doors	ACTIVE	Black Cran Trim	4OFX	Black	Cloth	●
		Menthol White interior personalisation	0OFN	Grey	Premium trim	○
		Lime Yellow interior personalisation	0PFY	Grey	Premium trim	○
3 & 5Doors	ACTIVE DESIGN	Black Cran Trim	4OFX	Black	Cloth	●
3 & 5Doors	ALLURE	Black Techmat Trim	0LFX	Black	Cloth	●
		Menthol White interior personalisation	0OFN	Grey	Premium trim	○
		Lime Yellow interior personalisation	0PFY	Grey	Premium trim	○
		Midnight Black Leather Trim	3UFX	Black	Leather	○
5Doors	ALLURE PREMIUM	Black Techmat Trim	0LFX	Black	Cloth	●
5Doors	ROLAND GARROS	Roland Garros Trim	54FX	Black / Orange	Cloth / TEP	●
3 & 5Doors	GT LINE	GT Line Trim	ONFS	Black / Red	Cloth / TEP	●
3 Doors	GTI & GTI Prestige	Full grain black half leather and caro cloth trim	21FS	Black / Red	Cloth / Leather	●
3 Doors	GTI by PSP	Black Alcantara Trim branded Peugeot Sport	0JFS	Black / Red	Alcantara	●

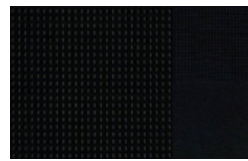
### TRIMS



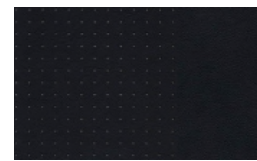
Black Horizon Trim



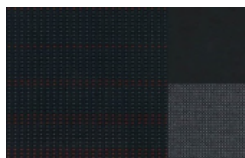
Black Cran Trim



Black Techmat Trim



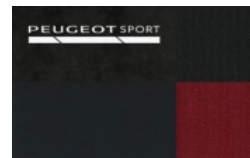
Midnight Black Leather Trim



GT Line Trim



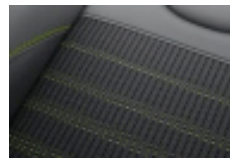
GTI & GTI Prestige



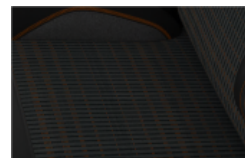
GTI by Peugeot Sport



Menthol White Premium Trim



Lime Yellow Premium Trim



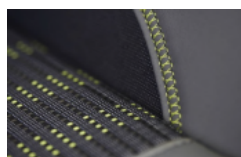
Roland Garros Trim

### INTERIOR PERSONALISATION

Body type	Specification level	Interior description	Trim code	Primary / secondary colour	Primary / secondary Material	SOLID COLOUR		PEARLESCENT COLOUR (Cost Option)	METALLIC COLOURS (Cost Option)						TEXTURED COLOURS (Cost Option)		
						Hurricane Grey P09G	Bianca White POWP	Satin White MGFC	Nero Black M09V	Orange Power M04T	Virtual Blue M0X4	Shark Grey M0SP	Aluminium M0ZR	Rioja Red M0PY	Twilight Blue M0KU	Ice Grey M7JD	Ice Silver M7WW
3 & 5 Doors	ACTIVE	Menthol White interior personalisation	0OFN	Grey	Premium trim	○	○			○	○	○	○	○	○	○	○
		Lime Yellow interior personalisation	0PFY	Grey	Premium trim	○	○		○	○	○	○	○	○	○	○	○
3 & 5 Doors	ALLURE	Menthol White interior personalisation	0OFN	Grey	Premium trim	○	○	○		○	○	○	○	○	○	○	○
		Lime Yellow interior personalisation	0PFY	Grey	Premium trim	○	○	○		○	○	○	○	○	○	○	○

#### Interior personalisation includes:

- Sports seats with contrast stitching
- Coloured front and rear door handles with coloured laser engraving at the front
- Grained dashboard moulding
- Satin chrome air vent finishers
- Full grain leather steering wheel and gear level gaiter with contrast stitching
- Passenger seat height adjustment



# 6.3 CHOOSE YOUR WHEELS

	ACCESS A/C	ACTIVE	ACTIVE DESIGN	ALLURE	ALLURE PREMIUM	ROLAND GARROS	GT LINE	GTi	GTi Prestige	GTi by Peugeot Sport
<b>Full size spare wheel - Petrol versions ONLY</b>								•	•	
<b>15" steel spare wheel - Petrol versions ONLY</b>	•	•	•	•	•	•	•			
<b>Space saver spare wheel - BlueHDi versions ONLY</b>	•	•		•		•	•			
<b>Tyre inflation kit</b>										•
<b>15" Steel Wheel with 'Niobium' wheel trim</b> ZHET - 15" steel spare wheel ZH38 - Space saver	•									
<b>15" 'Azote' Alloy Wheel</b> ZHEU - 15" steel spare wheel ZH65 - Space saver		•								
<b>16" 'Titane' Alloy Wheel</b> (Except 1.2L PureTech 68 on Active) ZHEW - 15" steel spare wheel ZH44 - Space saver		○		•						
<b>16" 'Titane' Technical Grey Alloy Wheel</b> ZHEX - 15" steel spare wheel ZH4J - Space saver			•	○		•				
<b>16" 'Titane' Matt Black Alloy Wheel</b> ZHEY - 15" steel spare wheel ZH4M - Space saver					•					
<b>16" 'Titane' Gloss Black Alloy Wheel with white laser engraving</b> ZHEZ - 15" steel spare wheel ZH4P - Space saver				○						
<b>17" 'Oxygen' Alloy Wheel</b> ZHFA - 15" steel spare wheel ZH5G - Space saver				○						
<b>17" 'Caesium' Alloy Wheel</b> ZHFB - 15" steel spare wheel ZH4R - Space saver							•			
<b>17" 'Carbone' Technical Grey Alloy Wheel</b> ZH3Q - Full size spare								•		
<b>17" 'Carbone' Onyx Black Alloy Wheel</b> ZH3U - Full size spare								○	•	
<b>17" 'Carbone' Storm Grey Alloy Wheel</b> ZH4T - Full size spare								○		
<b>18" 'Lithium' Alloy Wheel</b> ZH4Y - Tyre inflation kit										•



15" Steel Wheel with 'Niobium' wheel trim



15" 'Azote' Alloy Wheel



16" 'Titane' Alloy Wheel



16" 'Titane' Technical Grey Alloy Wheel



16" 'Titane' Matt Black Alloy Wheel



16" 'Titane' Gloss Black Alloy Wheel with white laser engraving



17" 'Oxygen' Alloy Wheel



17" 'Caesium' Alloy Wheel



17" 'Carbone' Technical Grey Alloy Wheel



17" 'Carbone' Onyx Black Alloy Wheel



17" 'Carbone' Storm Grey Alloy Wheel



18" 'Lithium' Alloy Wheel

\*Speed limited to under 50 mph when a 15" steel spare wheel is fitted to a vehicle with 16" or 17" wheels or when a space saver is fitted.





## 7.2 KNOW EVERYTHING ABOUT YOUR 208 Diesel

		1.6L BlueHDi 75	1.6L BlueHDi 75 S&S	1.6L BlueHDi 100	1.6L BlueHDi 120 S&S				
DRIVETRAIN	Fuel type	Diesel	Diesel	Diesel	Diesel				
	Cubic capacity (cc)	1,560	1,560	1,560	1,560				
	Maximum power hp (Kw)	75 (55) @ 3500 rpm	75 (55) @ 3500 rpm	99 (73) @ 3750 rpm	120 (88) @ 3500 rpm				
	Maximum torque Nm	230 @ 1750 rpm	230 @ 1750 rpm	254 @ 1750 rpm	300 @ 1750 rpm				
	5 speed manual	●	●	●					
	6 speed manual				●				
BRAKES	ESP	●	●	●	●				
	Front discs	●	●	●	●				
	Rear brakes	Drum	Drum	Disc	Disc				
TYRES	Tyres	185/65 R15 195/55 R16	185/65 R15 195/55 R16	185/65 R15 - 195/55 R16 - 205/45 R17					
	Tyre Size	15" or 16"	15" or 16"	15" or 16" or 17"					
	Suspension	Front: Pseudo Mc Pherson / rear: Cross deformable							
FUEL TANK	Approximate capacity (litres)	45							
PERFORMANCE (driver only)	Maximum speed (mph)	106	106	116	118				
	Acceleration 0-62 mph (sec) 1000m standing start	34.9	34.9	32.3	31.1				
	Acceleration 0-62 mph (sec)	13.3	13.3	10.7	9.4				
FUEL CONSUMPTION EMISSIONS	Urban drive cycle MPG (litres/100km)	67.3	4.2	78.5	3.6	67.3	4.2	64.2	4.4
	Extra Urban drive cycle MPG (litres/100km)	94.2	3.0	104.6	2.7	94.2	3.0	88.3	3.2
	Combined drive cycle MPG (litres/100km)	80.7	3.5	94.2	3.0	80.7	3.5	78.5	3.6
	Carbon Dioxide (CO2) emissions (g/km)	90		79		90		94	
	Regulation Emission Standard	Euro 6		Euro 6		Euro 6		Euro 6	
VEHICLE WEIGHT INFORMATION (KG) 3 door / 5 door	Gross vehicle weight	1,635		1,635		1635 / 1630		1,684	
	Kerb weight (full tank)	1065 / 1075		1070 / 1080		1065 / 1075		1115 / 1125	
	Mass in service	1225 / 1235		1230 / 1240		1250 / 1265		1285 / 1295	
	Gross train weight	2,295		2,045		2605 / 2600		2,664	
	Maximum braked trailer weight	840		590		1,150		1,150	
	Maximum tow ball weight					46			
AEROYD NAMICS	SCx (m <sup>2</sup> )	0.65	0.63	0.65	0.65				
DIMENSIONS	Overall length	3,973							
	Body including door handles / with door mirrors open	1,739 / 2,004							
	Ride height (full tank)	1460							
	Wheelbase	2538							
	Front overhang / Rear overhang	0.783 / 0.652							
	Front track /Rear Track	1,470 / 1,472							
	Total boot volume L - VDA	285 dm <sup>3</sup>							
TURNING CIRCLE (M)	Between walls	11.2				11.4			
	Between pavements	10.4				10.6			
INSURANCE GROUP	Access A/C	15E							
	Active	15E	15E						
	Allure	15E	15E			21D			
	Roland Garros					21D			
	GT Line					21D		23D	

## 7.3 KNOW EVERYTHING ABOUT YOUR 208 - Dimensions

### Exterior Dimensions (mm)

## PEUGEOT 208

A

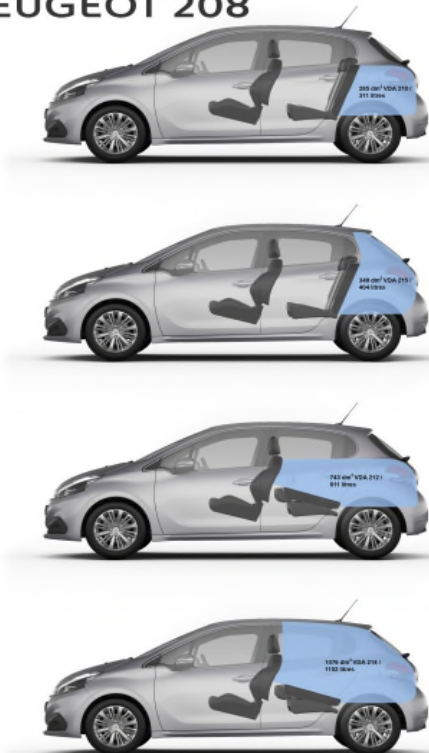


### Interior Dimensions (mm)

## PEUGEOT 208

## C PEUGEOT 208

B



	(mm)
A	720
B	974
B1	1675
C	611
D	982
E	818
F	961
G	478
H	230
I	447
J	697
J1	509
J2	1042
K	1408
L	1360
M	1380
N	1555

## 8. SERVICE CONTRACTS

Peugeot offer two levels of Service Contract:

### Peugeot Service Plan

**What's included:**

- > Peugeot Service Plans offer complete assurance that all your servicing costs will be completely covered for the duration of the plan
- > We offer Peugeot Service Plans for up to five years with many mileage options
- > One-off up front or monthly direct debit payment options available
- > All packages are affordable and inflation proof, which means they will remain at a fixed cost for the duration of the plan.

**Monthly price examples\*:**

3 Years / 35,000 Miles	4 Years / 45,000 Miles	5 Years / 55,000 Miles
12.99 per month	13.99 per month	13.99 per month

### Extended Peugeot Assistance\*

**What's included: Extension of your Peugeot Assistance Cover**

- > Offers you the opportunity to extend Peugeot Assistance up to a further two years
- > Cover includes:
  - Peugeot Assistance from Home
  - Peugeot Roadside Assistance
  - Peugeot Recovery
  - Peugeot Onward Travel
  - Peugeot European Cover

\* Excludes non-vehicle induced faults

To find out about extending your Peugeot Assistance cover, call **0800 294 0294**

For more information and terms & conditions please visit [www.servicing.peugeot.co.uk](http://www.servicing.peugeot.co.uk)

# FURTHER INFORMATION

## MANUFACTURERS RECOMMENDED RETAIL PRICE ON THE ROAD

The On the Road MRRP featured includes the following:

Tax band	CO2 (g/km)	First Year VED	Annual Tax	First Reg fee	Delivery Charge	VAT @ 20% on Delivery	Total OTR Costs
A	Up to 100	£0.00	£0.00	£55.00	£550.83	£110.17	<b>£716.00</b>
B	101-110	£0.00	£20.00	£55.00	£550.83	£110.17	<b>£716.00</b>
C	111-120	£0.00	£30.00	£55.00	£550.83	£110.17	<b>£716.00</b>
D	121-130	£0.00	£110.00	£55.00	£550.83	£110.17	<b>£716.00</b>
E	131-140	£130.00	£130.00	£55.00	£550.83	£110.17	<b>£846.00</b>
F	141-150	£145.00	£145.00	£55.00	£550.83	£110.17	<b>£861.00</b>
G	151-165	£185.00	£185.00	£55.00	£550.83	£110.17	<b>£901.00</b>
H	166-175	£300.00	£210.00	£55.00	£550.83	£110.17	<b>£1,016.00</b>
I	176-185	£355.00	£230.00	£55.00	£550.83	£110.17	<b>£1,071.00</b>
J	186-200	£500.00	£270.00	£55.00	£550.83	£110.17	<b>£1,216.00</b>
K	201-225	£650.00	£295.00	£55.00	£550.83	£110.17	<b>£1,366.00</b>
L	226-255	£885.00	£500.00	£55.00	£550.83	£110.17	<b>£1,601.00</b>
M	Over 255	£1,120.00	£515.00	£55.00	£550.83	£110.17	<b>£1,836.00</b>

VAT is calculated at 20%

VAT is not applicable to cars sold in the Channel Islands

## PEUGEOT 3 YEARS OF WARRANTY

All vehicles first registered in the UK and purchased from a UK Peugeot Dealer benefit from a Peugeot 2 year unlimited mileage manufacturer's warranty and a free optional additional 1 year of warranty provided by the Peugeot Dealer Network in the UK.

## PEUGEOT ASSISTANCE

All new Peugeots come with Peugeot Assistance, our breakdown assistance service.

Provided by the AA, Peugeot Assistance is available every minute of the day and night; 365 days of the year, for you and anyone else driving your Peugeot with your permission.

Full details are available at [www.peugeot.co.uk](http://www.peugeot.co.uk)

## TERMS AND CONDITIONS

Every endeavour has been made to ensure that the information, details and descriptions set out in this literature are correct, at the time of going to print.

It is our policy to continually improve our vehicles in every way. We reserve the right to modify our vehicles price, specification (including colour), equipment, accessories and characteristics or to discontinue any model, without notice, at any time.

To avoid any misunderstandings you are advised to check with your Peugeot Dealer the specification (including colour), equipment accessories and equipment relating to any Peugeot vehicle and the exact cost and availability prior to ordering.

Where a feature is described as an option in this publication it should be assumed that it is at extra cost unless specifically stated otherwise.

Issued by Sales and Marketing, Peugeot Motor Company PLC, Pinley House, Sunbeam Way, Coventry, CV3 1ND.

**For further information call Peugeot on 0845 200 1234 or visit our website at [www.peugeot.co.uk](http://www.peugeot.co.uk)**



**PEUGEOT**