



# PEUGEOT 308

SW

Price & Specification Guide  
April 2016 Version 2  
Model Year 2016



PEUGEOT



1-litre to 1.4-litre  
PSA Peugeot Citroën  
1.2-litre three-cylinder turbo

# SPECIFICATION OVERVIEW

	<b>GT</b>	
GT LINE +	<p><b>Exterior features</b></p> <ul style="list-style-type: none"> <li>- Front bumper mounted air intakes (in lieu of fog lights) in black lacquered surround</li> <li>- Lowered ride height (7mm at front, 10mm at rear)</li> </ul> <p><b>Interior features</b></p> <ul style="list-style-type: none"> <li>- Mistral Nappa GT style leather steering wheel with red stitching and GT badge</li> <li>- Driver Sport Pack</li> </ul> <p><b>Comfort and convenience</b></p> <ul style="list-style-type: none"> <li>- Peugeot Open &amp; Go system (keyless entry &amp; push button start)</li> <li>- Driver Assistance Pack: Dynamic Cruise Control, Emergency Collision Alert &amp; Emergency Collision Braking System</li> </ul>	
ALLURE +	<p><b>Exterior features</b></p> <ul style="list-style-type: none"> <li>- 18" Diamant alloy wheels</li> <li>- Twin exhaust effect trim with piano black detail surround</li> <li>- Dark Tinted rear side &amp; tailgate windows</li> <li>- Front LED sequential indicators</li> <li>- Front LED foglights</li> </ul> <p><b>Comfort and convenience</b></p> <ul style="list-style-type: none"> <li>- Reversing camera</li> <li>- Aluminium boot rails</li> </ul> <p><b>Interior features</b></p> <ul style="list-style-type: none"> <li>- Mistral Nappa GT style leather steering wheel with red stitching</li> <li>- GT style carpet mats</li> <li>- Aluminium style pedals and door sills</li> </ul>	
ACTIVE +	<p><b>Exterior features</b></p> <ul style="list-style-type: none"> <li>- 17" Rubis alloy wheels (Note: 16" Alloy wheels std on Allure 1.6 BlueHDI 120)</li> <li>- Aluminium roof rails</li> <li>- Front fog lights</li> <li>- Full LED headlamps with fully integrated LED daytime running lights</li> </ul> <p><b>Comfort and convenience</b></p> <ul style="list-style-type: none"> <li>- Front &amp; rear parking sensors</li> <li>- Power folding door mirrors with courtesy approach lighting</li> <li>- Automatic electric parking brake</li> </ul>	
ACCESS +	<p><b>Exterior features</b></p> <ul style="list-style-type: none"> <li>- 16" Quartz alloy wheels</li> </ul> <p><b>Comfort and convenience</b></p> <ul style="list-style-type: none"> <li>- Dual zone climate control</li> <li>- Rear parking sensors</li> <li>- Mistral Nappa Leather trimmed steering wheel &amp; gearknob</li> <li>- Visibility pack: Automatic headlights &amp; windscreen wipers, electrochrome auto dimming rear view mirror</li> </ul> <p><b>In-car entertainment</b></p> <ul style="list-style-type: none"> <li>- 9.7" multifunction colour touchscreen</li> <li>- Satellite navigation (includes 5 years of mapping updates)</li> </ul> <p><b>Interior features</b></p> <ul style="list-style-type: none"> <li>- Manual adjustable driver lumbar support</li> </ul>	
	<p><b>Exterior features</b></p> <ul style="list-style-type: none"> <li>- LED daytime running lights and rear lights</li> <li>- 15" steel wheels with Ambre wheel trims</li> </ul> <p><b>Comfort and convenience</b></p> <ul style="list-style-type: none"> <li>- Manual mono-zone air conditioning</li> <li>- Electric 'one touch' front windows</li> <li>- Remote controlled central locking</li> <li>- Cruise control with speed limiter</li> </ul> <p><b>In-car entertainment</b></p> <ul style="list-style-type: none"> <li>- DAB digital radio</li> <li>- USB connection</li> <li>- Bluetooth</li> </ul>	

# MANUFACTURER'S RECOMMENDED PRICES -PEUGEOT 308 SW

April 2016 Version 2

	ENGINE	HP	VERSION TITRE CODE	CO <sub>2</sub> g/km	BASIC MRRP	VAT (£)	TOTAL MRRP	P11D VALUE (£)	2016/17 BIK %	ON THE ROAD MRRP
<b>ACCESS</b>	<b>1.2L PureTech 110 S&amp;S</b> 5-speed manual	110	<b>1PT9C5FCQJTOBMB6</b> (308SW ACC PT110)	99	14,290.83	2,858.17	17,149.00	17,810.00	16	<b>17,865.00</b>
	<b>1.6L BlueHDi 100 S&amp;S</b> 5-speed manual	99	<b>1PT9C5FKEJT0A0B6</b> (308SW ACC BHD1100)	94	14,874.17	2,974.83	17,849.00	18,510.00	18	<b>18,565.00</b>
<b>ACTIVE</b>	<b>1.2L PureTech 110 S&amp;S</b> 5-speed manual	110	<b>1PT9C5LCQJTOBMB6</b> (308SW ACT PT110)	99	15,707.50	3,141.50	18,849.00	19,510.00	16	<b>19,565.00</b>
	<b>1.2L PureTech 130 S&amp;S</b> 6-speed manual	130	<b>1PT9C5LCRKTOA0B6</b> (308SW ACT PT130)	106	16,165.83	3,233.17	19,399.00	20,060.00	18	<b>20,115.00</b>
	<b>1.2L PureTech 130 EAT6 S&amp;S</b> 6-speed Efficient Automatic Transmission	130	<b>1PT9C5LCRQTOA0B6</b> (308SW ACT PT130A)	106	16,999.17	3,399.83	20,399.00	21,060.00	18	<b>21,115.00</b>
	<b>1.6L BlueHDi 100 S&amp;S</b> 5-speed manual	99	<b>1PT9C5LKEJT0A0B6</b> (308SW ACT BHD1100)	94	16,290.83	3,258.17	19,549.00	20,210.00	18	<b>20,265.00</b>
	<b>1.6L BlueHDi 120 S&amp;S</b> 6-speed manual	120	<b>1PT9C5LKDKTOBMB6</b> (308SW ACT BHD1120)	85	17,124.17	3,424.83	20,549.00	21,210.00	18	<b>21,265.00</b>
	<b>1.6L BlueHDi 120 EAT6 S&amp;S</b> 6-speed Efficient Automatic Transmission	120	<b>1PT9C5LKDQTOA0B6</b> (308SW ACT BHD1120A)	96	17,957.50	3,591.50	21,549.00	22,210.00	19	<b>22,265.00</b>
<b>ALLURE</b>	<b>1.2L PureTech 110 S&amp;S</b> 5-speed manual	110	<b>1PT9C5PCQJTOA0B6</b> (308SW ALL PT110)	111	16,540.83	3,308.17	19,849.00	20,510.00	19	<b>20,565.00</b>
	<b>1.2L PureTech 130 S&amp;S</b> 6-speed manual	130	<b>1PT9C5PCRKTOA0B6</b> (308SW ALL PT130)	111	17,165.83	3,433.17	20,599.00	21,260.00	19	<b>21,315.00</b>
	<b>1.2L PureTech 130 EAT6 S&amp;S</b> 6-speed Efficient Automatic Transmission	130	<b>1PT9C5PCRQTOA0B6</b> (308SW ALL PT130A)	112	17,999.17	3,599.83	21,599.00	22,260.00	19	<b>22,315.00</b>
	<b>1.6L BlueHDi 120 S&amp;S</b> 6-speed manual	120	<b>1PT9C5PKDKTOBMB6</b> (308SW ALL BHD1120)	88	18,124.17	3,624.83	21,749.00	22,410.00	18	<b>22,465.00</b>
	<b>1.6L BlueHDi 120 EAT6 S&amp;S</b> 6-speed Efficient Automatic Transmission	120	<b>1PT9C5PKDQTOA0B6</b> (308SW ALL BHD1120A)	102	18,957.50	3,791.50	22,749.00	23,410.00	20	<b>23,465.00</b>
	<b>2.0L BlueHDi 150 S&amp;S</b> 6-speed manual	150	<b>1PT9C5PKBKT0A0B7</b> (308SW ALL BHD1150)	102	18,874.17	3,774.83	22,649.00	23,310.00	20	<b>23,365.00</b>
	<b>2.0L BlueHDi 150 EAT6 S&amp;S</b> 6-speed Efficient Automatic Transmission	150	<b>1PT9C5PKBQTOA0B6</b> (308SW ALL BHD1150A)	109	19,707.50	3,941.50	23,649.00	24,310.00	21	<b>24,365.00</b>
<b>GT LINE</b>	<b>1.2L PureTech 130 S&amp;S</b> 6-speed manual	130	<b>1PT9C5TCRKTOA0B6</b> (308SW GTL PT130)	111	18,457.50	3,691.50	22,149.00	22,810.00	19	<b>22,865.00</b>
	<b>1.2L PureTech 130 EAT6 S&amp;S</b> 6-speed Efficient Automatic Transmission	130	<b>1PT9C5TCRQTOA0B6</b> (308SW GTL PT130A)	112	19,290.83	3,858.17	23,149.00	23,810.00	19	<b>23,865.00</b>
	<b>1.6L BlueHDi 120 S&amp;S</b> 6-speed manual	120	<b>1PT9C5TKDKTOA0B6</b> (308SW GTL BHD1120)	102	19,415.83	3,883.17	23,299.00	23,960.00	20	<b>24,015.00</b>
	<b>1.6L BlueHDi 120 EAT6 S&amp;S</b> 6-speed Efficient Automatic Transmission	120	<b>1PT9C5TKDQTOA0B6</b> (308SW GTL BHD1120A)	102	20,249.17	4,049.83	24,299.00	24,960.00	20	<b>25,015.00</b>
	<b>2.0L BlueHDi 150 S&amp;S</b> 6-speed manual	150	<b>1PT9C5TKBKT0A0B7</b> (308SW GTL BHD1150)	102	20,165.83	4,033.17	24,199.00	24,860.00	20	<b>24,915.00</b>
	<b>2.0L BlueHDi 150 EAT6 S&amp;S</b> 6-speed Efficient Automatic Transmission	150	<b>1PT9C5TKBQTOA0B6</b> (308SW GTL BHD1150A)	109	20,999.17	4,199.83	25,199.00	25,860.00	21	<b>25,915.00</b>
<b>GT</b>	<b>2.0L BlueHDi 180 EAT6 S&amp;S</b> 6-speed Efficient Automatic Transmission	180	<b>1PT9C5UKAQTOA0B6</b> (308SW GT BHD1180A)	107	22,207.50	4,441.50	26,649.00	27,310.00	21	<b>27,365.00</b>



Model shown is Peugeot 308 SW GT with optional Magnetic Blue metallic paint.

## Safety Features

Here at Peugeot, safety is of paramount importance, with this in mind every part of Peugeot 308 has been designed to protect you and those dearest to you.

In recognition of this Peugeot 308 SW's counterpart, Peugeot 308 Hatchback was awarded a five star rating – the highest rating possible – from Euro NCAP, the most widely recognised independent vehicle safety assessor in Europe, following extensive and rigorous crash testing.

**Airbags:** Peugeot 308 offers optimum protection for you and your family. All models features 6 airbags as standard. Airbag protection comprises:

**Driver & front passenger airbags:** providing frontal protection for front seat occupants. Front passenger airbag can be deactivated to allow for the fitment of a child seat.

**Front side airbags:** located in the seat frame on the outside edge of the front seats; they inflate between front seat occupants and the front doors, providing thorax, abdomen and pelvis protection in a side impact.

**Curtain airbags:** located either side of 308, these deploy in a side impact and provide head protection for both front and rear occupants in a side impact.

**Isofix:** Peugeot 308 SW features two Isofix mounting points located on the outer rear seats, allowing for the safe and secure fitment of two child seats.

In addition, deployment of the airbags causes the fuel supply to be cut off, doors will automatically unlock, hazard warning lamps will activate and Peugeot Connect SOS (if specified) will automatically trigger and contact the emergency services if no response is received from occupants onboard.



## Practicality

**Practicality:** Peugeot 308 SW features the largest load space in its class. The boot area level with the retractable parcel shelf in place boasts up to 660 litres, this extends up to an impressive 1775 litres with the rear seats folded flat, loaded to the roof.

**"Magic Flat" Rear Seats:** Offer 2/3 1/3 split fold functionality, when lowered the rear seats lie flat to optimise loading. Lowering the seats couldn't be easier, simply pull the handles located in the boot area, a particularly useful feature when loading items in tighter spaces as there is no need to open the rear doors to lower the seats.

**Retractable Boot Cover:** A cover that can be pulled across to conceal items in the boot, retracted to allow for greater access, or removed all together for optimised load space with the seats folded.

**Boot Sill Height:** The design of Peugeot 308 SW incorporates one of the lowest boot sills in the class. The unladen height is just 61cm, this allows easier loading and unloading of bulky or heavy items whilst also providing easier access for pets.

**Aluminium Boot Rails:** For additional security on the move, boot rails, complete with adjustable tethering hooks can be used to prevent items moving. (Optional on Allure models, standard on GT Line & GT models)



Rear seats in place with boot cover retracted, up to 810 litres of space (loaded to roof).



"Magic Flat" rear seats 2/3 1/3.



"Magic Flat" rear seats folded, up to 1775 litres of space (loaded to roof).



Low Boot Sill for easier loading.



"Magic Flat" rear seats boot release switch.



Aluminium Boot Rails with accessory boot retainer (available at extra cost).

Model shown is Peugeot 308 SW GT with optional Magnetic Blue metallic paint.



PureTech Petrol Engine Technology



**Peugeot PureTech: Compact engine – huge spirit**

Peugeot PureTech is advanced 3-cylinder petrol engine technology that offers a drive and performance normally associated with much bigger engines but with significantly improved fuel consumption and CO<sub>2</sub> emissions<sup>1</sup>. It's a product of Peugeot's 100 years of intelligent, innovative engineering and combines reduced weight materials with the efficiency of applying direct fuel injection to three cylinders. On some versions we've even added Turbo power, optimising torque at all revs and delivering an engine with a unique personality and one which is ultimately designed to give you maximum driving pleasure and responsiveness, at any speed, for less.

(comparison based on New 308 1.2L PureTech110 S&S vs New 308 1.6 THP 125)



**Peugeot PureTech: The Record Breaker.....**

The award winning Peugeot 308 fitted with the award winning 1.2l PureTech 130 S&S set a new record for production car fuel economy & distance.

- 1.2l PureTech 130 S&S managed **99.1mpg** & covered **1,125** miles on one tank of fuel.
- Officially witnessed by the authority UTAC (Union Technique de l'Automobile, Motorcycle et Cycle).
- Driven for over 32 hours to consume the 51.4-litre contents of its fuel tank.

**Peugeot PureTech: The Award Winner.....**

PureTech technology was awarded the hugely impressive accolade of 'International Engine of the Year 2015' award for the 1.0l -1.4l category with a panel of 65 industry experts from 31 countries coming to the unanimous decision, forcing Volkswagen's 1.4-litre TSI Twincharger unit into second place.

- "The new PureTech engine from PSA is a **revolution** in terms of refinement, performance and efficiency," stated German journalist Thomas Imhof.
- "Without turbo lag, this three-cylinder gives a lot of power and perfect torque at very low revs, with a harmonious noise throughout the whole range. And the consumption is very low," agreed L'Automobile Magazine's Christophe Congrega.



**1-litre to 1.4-litre**  
PSA Peugeot Citroën  
1.2-litre three-cylinder turbo

BlueHDi Diesel Engine Technology



**Peugeot BlueHDi : Pioneering on MPG and CO<sub>2</sub>**

BlueHDi is the name given to Peugeot's latest generation of diesel engines. The result of a world-famous diesel heritage plus innovation and engineering excellence developed on the race track of Le Mans, BlueHDi complies with Euro 6\* emission standards, to deliver exceptional fuel economy and CO<sub>2</sub> emissions alongside a driving experience rich in power and performance.

A three stage cleansing process specifically targets the pollutants of diesel combustion, removing hydrocarbons and carbon monoxide, reducing nitrogen oxides by up to 90% and eliminating 99.9%<sup>ii</sup> of particulates. BlueHDi delivers the cleanest diesel engine possible and exceptional fuel economy of up to 91mpg with CO<sub>2</sub> as low as 82g/km<sup>iii</sup>.

(<sup>i</sup>by number <sup>ii</sup>model and version dependent)



- Peugeot 308 Active 1.6L BlueHDi 120 S&S awarded 'Best SME Company Car To Buy 2015' by Business Car Manager magazine, in recognition of its 'ultra clean 1.6l diesel engine'.



Efficient Automatic Transmisson (EAT6) Technology

**EAT6 (Efficient Automatic Transmission):**

**New generation of AISIN 6-speed automatic gearboxes**

Peugeot's new generation of automatic gearboxes have been developed in collaboration with Aisin AW. EAT6 uses Quickshift technology, for faster gear changes and smooth operation, delivering superb driving pleasure and exceptional fuel and CO<sub>2</sub> efficiency.



Model shown is Peugeot 308 SW Allure with optional 18" Saphir wheels, Cielo panoramic glass roof and Cumulus Grey metallic paint.

## KEY FEATURES - PEUGEOT 308 SW

### Driver Assistance Pack

**Driver Assistance Pack:** Advanced safety pack controlled by a radar mounted within the front bumper. Pack comprises:

**Dynamic Cruise Control:** ('intelligent' cruise control that can use engine braking to maintain a set distance between 308 and the car in front).

**Emergency Collision Alert System:** (an audible & visual alert to the driver to take action to avoid a collision).

**Emergency Collision Braking System:** (if a collision is imminent 308 makes an automatic brake application to reduce speed by a maximum of 12mph to reduce the severity of impact).  
(Optional on Allure & GT Line, standard on GT models).



### Peugeot Connect SOS & Assistance

**Peugeot Connect SOS & Assistance:** A vehicle locating communication unit, this feature can be used manually (dedicated SOS button in the roof) or automatically (if pyrotechnic devices are deployed). It locates the vehicle precisely and triggers the sending of the appropriate emergency services for a rapid response. Peugeot are the pioneers of this technology, since launching in 2003 Peugeot Connect SOS & Assistance has come to the aid of over 7,000 individuals.  
(Optional across the Peugeot 308 range).



### Peugeot Open & Go

**Peugeot Open & Go:** Using sensors mounted in the front door handles, 308 can be opened without removing the key from your pocket or bag, simply grab the handle and the vehicle will automatically unlock. Once inside a simple press of the stop start button is all that is required.  
(Optional on Allure & GT Line, standard on GT models).



### City Park

**City Park:** This system provides Active assistance for parking by detecting a parking space and then operating the steering system to park in this space. The system works with both parallel and bay parking.

**Blind Spot Monitoring:** also comes with the City park pack, this technology provides information to the driver during a journey, on the presence of a vehicle or motorcycle in the blind spot by means of four sensors mounted in the front and rear bumpers, if a vehicle is detected the driver is informed through the illumination of the LED light located in the door mirrors.  
(Optional on Allure, GT Line & GT models).



### Driver Sport Pack

**Driver Sport Pack:** Increase the sporting temperament of your Peugeot 308 with this exciting pack.  
By pressing the 'Sport' button this increases responsiveness of power steering and engine and gearbox to accelerator pedal. Other changes include instrument panel colour change to red (from white) and a change to display vehicle dynamic parameters - acceleration, power delivery, turbo.  
(Optional on Allure & GT Line, standard on GT models).



### Peugeot Connect Apps

**Peugeot Connect Apps:** An apps service that is designed to respond to all of your requirements during a journey, services include: fuel station locations and the pricing of their fuel, Trip Advisor to provide reviews of nearby attractions, restaurants, pubs, cafes & hotels. Along a journey the Michelin Traffic guide provides real time information on traffic deals around 308.  
(Optional across the Peugeot 308 range).



## KEY FEATURES CONTINUED - PEUGEOT 308 SW

### Satellite Navigation

**Satellite Navigation:** Linked to the 9.7" colour touch screen, the system includes European mapping and comes with 5 years of free software updates.

The system also includes a point of interest function, full postcode lookup and various route planning options.  
(Standard on 308 Active models and above)



### Colour Reversing Camera

**Colour Reversing Camera:** A camera located on the rear of the vehicle is linked to the 9.7" colour touch screen. The system increases visibility and driver confidence when reversing.

The camera also works in low light & features guidance lines to aid with parking.  
(Optional on Allure, standard on GT Line and GT models)



### Full LED Headlamps

**Full LED Headlamps:** Light Emitting Diode (LED) technology remains a rare feature in the car industry with Peugeot 308 however this is not the case. Full LED headlamps feature from Allure level and above providing the following customer benefits:

- LED technology consumes considerably less energy to produce light, 50% less than halogen and 35% less than xenon technologies.
  - LED technology offers a whiter light for improved visibility at night, the light is also more similar to daylight, leading to reduced driver eye fatigue, improving safety.
  - LED technology requires no warm up time with instantaneous lighting response when compared to conventional halogen technologies.
  - LED technology will last for the life of the car, compared to halogen technology with much shorter life expectancy.
  - LED technology offers a very striking visual signature that perfectly complements the sharp exterior design of Peugeot 308.
- (Standard on 308 Allure models and above)

In addition all PEUGEOT 308 models feature LED daytime running lights to increase the visibility of the vehicle during daylight hours as well as LED lighting for the rear side and brake lights.



### Panoramic Cielo Glass Roof

**Panoramic Cielo Glass Roof:** Measuring 1.44m<sup>2</sup> this large fixed panel glass roof bathes the cabin in natural light. An electric roller blind is also included, this blind is able to filter out of 95% of exterior light.  
(Optional on 308 Active models and above)



### 1. Visibility with halogen technology.



### 2. Visibility with full LED technology.



### Sequential LED Front Indicators

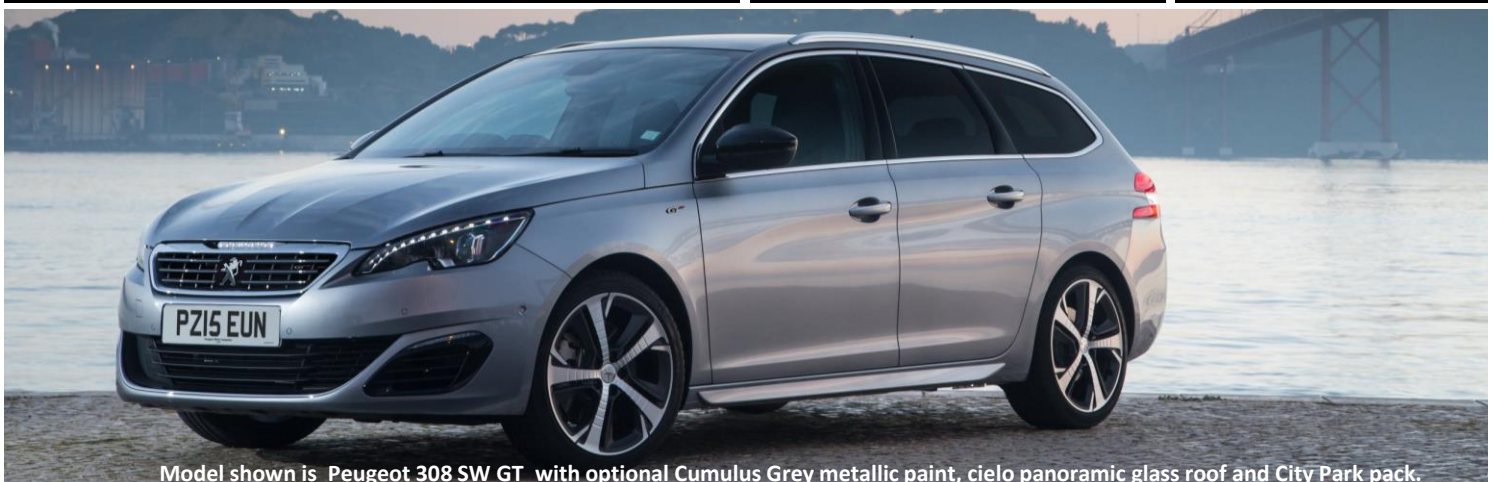
**Sequential LED Front Indicators:** an exclusive visual marker for sport models, when signalling the front bumper mounted LED indicators scroll in an outwards formation.  
(Standard on 308 GT Line and GT)



# CHOOSE YOUR OPTIONS

April 2016 Version 2

		ACCESS	ACTIVE	ALLURE	GT LINE	GT	Basic RRP £ Excluding VAT	VAT @ 20%	Total RRP £ Including VAT
<b>PAINT</b>									
Metallic paint	MO..	○	○	○	○	○	437.50	87.50	<b>525.00</b>
Pearlescent/special paint	M6../M5..	○	○	○	○	○	562.50	112.50	<b>675.00</b>
White paint	P0..	○	○	○	-	-	208.33	41.67	<b>250.00</b>
<b>SEATING</b>									
Black Mistral leather sports style heated front seats with seat back pockets and electric lumbar adjustment. Leather rear seats with arm rest and ski flap.	8DFX	-	-	○	-	-	1,250.00	250.00	<b>1,500.00</b>
Black Mistral (with red stitching) leather sports style heated front seats with seat back pockets and electric lumbar adjustment and massage function on front seats. Leather rear seats with arm rest and ski flap.	8DFJ	-	-	-	○	○	1,000.00	200.00	<b>1,200.00</b>
<b>SAFETY AND SECURITY</b>									
Peugeot Connect SOS and Assistance (non-touch screen models)	WLA2	○	-	-	-	-	200.00	40.00	<b>240.00</b>
Peugeot Connect SOS and Assistance (touch screen models)	WLA9	-	○	○	○	○	200.00	40.00	<b>240.00</b>
Ultrasonic alarm (Thatcham Category 1 approved)	AB08	○	●	●	●	●	150.00	30.00	<b>180.00</b>
<b>COMFORT AND CONVENIENCE</b>									
Peugeot Open and Go system (keyless entry with start/stop button)	YD01	-	-	○	○	●	345.83	69.17	<b>415.00</b>
Driver Assistance Pack (Dynamic Cruise Control, Emergency Collision Alert System and Emergency Collision Braking System)	RG17	-	-	○	○	●	375.00	75.00	<b>450.00</b>
City Park enhanced parking assistance system with blind spot monitoring (includes Colour reversing camera on Allure models)	UB10	-	-	○	○	○	333.33	66.67	<b>400.00</b>
Panoramic fixed cielo glass roof with electric interior blind	OK01	-	○	○	○	○	416.67	83.33	<b>500.00</b>
Colour reversing camera	UB07	-	-	○	●	●	166.67	33.33	<b>200.00</b>
Automatic electric parking brake	FH05	-	○	●	●	●	166.67	33.33	<b>200.00</b>
Electric folding door mirrors with courtesy approach lighting	HU13	-	○	●	●	●	83.33	16.67	<b>100.00</b>
Aluminium boot rails	SP13	-	-	○	-	-	83.33	16.67	<b>100.00</b>
Boot load restraining net	NM01	○	○	○	○	○	125.00	25.00	<b>150.00</b>
<b>IN CAR ENTERTAINMENT</b>									
Driver Sport Pack - available on PureTech 1.2 PureTech 110 S&S, 1.2 PureTech 130 S&S (manual and auto), 2.0 BlueHDi 150 manual. Standard on GT.	QM02	-	-	○	○	●	308.33	61.67	<b>370.00</b>
Peugeot Connect Apps V2 - Dealer Fit Only - only compatible with vehicles equipped with Satellite Navigation		-	○	○	○	○	249.17	49.83	<b>299.00</b>
CD player (integrated within standard audio unit)	WLB5	-	○	○	○	○	100.00	20.00	<b>120.00</b>
CD player (integrated within standard audio unit) and Peugeot Connect SOS and Assistance (touch screen models)	WLB0	-	○	○	○	○	300.00	60.00	<b>360.00</b>
<b>EXTERIOR FEATURES</b>									
17" Rubis alloy wheels (with space saver spare wheel). Note: only available on BlueHDi 100, Puretech 130 & BlueHDi 120 EAT6 Automatic	ZH2R	-	○	-	-	-	250.00	50.00	<b>300.00</b>
18" Saphir alloy wheels (with space saver spare wheel) Note: unavailable on Allure BlueHDi 120 Manual	ZH2U	-	-	○	-	-	250.00	50.00	<b>300.00</b>
<b>EXTERIOR LIGHTING AND VISIBILITY</b>									
Halogen Front fog lights	PR01	○	○	●	-	-	108.33	21.67	<b>130.00</b>



Model shown is Peugeot 308 SW GT with optional Cumulus Grey metallic paint, cielo panoramic glass roof and City Park pack.



# EQUIPMENT

● = Standard ○ = Option at extra cost



ACCESS	ACTIVE	ALLURE	GT LINE	GT
--------	--------	--------	---------	----

BODYSTYLE					
Five door ESTATE	●	●	●	●	●
SEATING					
Comfort seats trimmed in Metax Mistral cloth trim	●	-	-	-	-
Comfort seats trimmed in Metax Mistral cloth trim with overstitch detail	-	●	-	-	-
Sports style seats in Marston Mistral cloth trim with double overstitch detail	-	-	●	-	-
Sports style seats in black Mistral half alcantara trim	-	-	-	-	-
Sports style seats trimmed in leather effect & Oxford cloth with red overstitch detail	-	-	-	●	-
Sports style seats trimmed in leather effect & half alcantara with red overstitch detail	-	-	-	-	●
Height adjustment of front passenger seat	●	-	-	-	-
Height adjustment of front passenger seat, seat back pockets and lumbar adjustment for driver seat	-	●	●	-	-
Height adjustment of front passenger seat, seat back pockets and lumbar adjustment for driver & passenger seat	-	-	-	●	●
SAFETY AND SECURITY					
Driver and front passenger front and side airbags	●	●	●	●	●
Curtain airbags for front and rear windows	●	●	●	●	●
Anti-Lock Braking (ABS), Electronic Brake Force Distribution (EBFD), Emergency Braking Assistance (EBA)	●	●	●	●	●
Electronic Stability Programme (ESP)	●	●	●	●	●
Three point inertia reel seat belts on all seats	●	●	●	●	●
Ultrasonic alarm (Thatcham Category 1 approved)	○	●	●	●	●
Locking wheel bolts	-	●	●	●	●
Space saver spare wheel	●	●	●	●	●
Deadlocks	●	●	●	●	●
Rolling code transponder immobiliser	●	●	●	●	●
COMFORT AND CONVENIENCE					
Mistral Nappa leather steering wheel (non-leather on Access)	-	●	●	-	-
GT style leather steering wheel (with GT badge on GT)	-	-	-	●	●
Electric power assisted steering	●	●	●	●	●
Cruise control and speed limiter	●	-	-	-	-
Programmable cruise control and speed limiter	-	●	●	●	-
Driver Assistance Pack: Dynamic Cruise Control, Emergency Collision Alert & Emergency Collision Braking System	-	-	○	○	●
Rear parking sensors	-	●	-	-	-
Front and rear parking sensors	-	-	●	●	●
Colour reversing camera	-	-	○	●	●
Manual mono-zone air conditioning	●	-	-	-	-
Automatic dual-zone climate control	-	●	●	●	●
One-touch electric front windows	●	●	●	●	●
Manual rear windows	●	-	-	-	-
Electric rear windows	-	●	●	●	●
Electric folding door mirrors with courtesy approach lighting	-	○	●	●	●
Automatic electric parking brake (includes Hill Assist).	-	○	●	●	●
12V accessory power point front	●	●	●	●	●
Aluminium boot rails	-	-	○	●	●
Peugeot Open and Go system (keyless entry with start/stop button)	-	-	○	○	●

## EQUIPMENT (2)

● = Standard ○ = Option at extra cost



ACCESS	ACTIVE	ALLURE	GT LINE	GT
--------	--------	--------	---------	----

### IN CAR ENTERTAINMENT

Driver Sport Pack - optional on 1.2 PureTech 110 S&S, 1.2 PureTech 130 S&S (manual and auto), 2.0 BlueHDi 150 manual. Standard on GT.	-	-	○	○	●
Peugeot Connect Sound (RD45) DAB digital radio with integrated CD player	●	-	-	-	-
DAB digital radio with 9.7" multifunction colour touch screen (without CD player)	-	●	●	-	-
DAB digital radio & 9.7" multifunction colour touch screen with 'Redline' sports theme (without CD player)	-	-	-	●	●
Satellite navigation (includes 5 years of free mapping updates)	-	●	●	●	●
Bluetooth telephone facility	●	●	●	●	●

### EXTERIOR FEATURES

Body coloured door mirror shells	●	●	●	-	-
High gloss black door mirror shells	-	-	-	●	●
Tinted rear side & tailgate windows	●	●	●	-	-
Dark Tinted rear side & tailgate windows	-	-	-	●	●
Aluminium roof rails	-	-	●	●	●
15" steel wheels with Ambre wheel trims (with space saver spare)	●	-	-	-	-
16" Quartz alloy wheels (with space saver spare)	-	●	-	-	-
16" Diamond alloy wheels (with space saver spare) 1.6 BlueHDi 120 Manual	-	-	●	-	-
17" Rubis alloy wheels (with space saver spare) Note: only available on Puretech 130, BlueHDI 100, BlueHDI 120 Auto	-	○	●	-	-
18" Diamant alloy wheels (with space saver spare)	-	-	-	●	●

### EXTERIOR LIGHTING AND VISIBILITY

Halogen front fog lights	○	○	●	-	-
LED front fog lights	-	-	-	●	-
Sequential LED front indicators	-	-	-	●	●
Halogen headlamps with bumper integrated LED daytime running lights	●	●	-	-	-
Full LED headlamps with fully integrated LED daytime running lights	-	-	●	●	●
LED rear lights	●	●	●	●	●
Automatic headlamps (with follow-me-home function) and wipers	-	●	●	●	●
Electrochrome rear view mirror	-	●	●	●	●



Model shown is Peugeot 308 SW Allure with optional 18" Saphir wheels, Cielo panoramic glass roof and Cumulus Grey metallic paint.

# CHOOSE YOUR COLOUR

## COLOUR OPTIONS

SOLID COLOUR		METALLIC COLOURS (extra cost option)						PEARLESCENT COLOUR (extra cost option)	SPECIAL COLOUR (extra cost option)
no cost option	extra cost option								
Hurricane Grey	Bianca White	Aluminium	Nera Black	Twilight Blue	Cumulus Grey	Nimbus Grey	Magnetic Blue	Pearlescent White	Ultimate Red
P09G	P0WP	M0ZR	M09V	M0KU	M0F4	M0VL	M0EG	M6N9	M5F3

● = Standard at no cost ○ = Option at extra cost

<b>ACCESS</b>	Comfort seats trimmed in Metax Mistral cloth	1PFX	●	○	○	○	○	○	○	○	○	○
<b>ACTIVE</b>	Comfort seats trimmed in Metax Mistral cloth with overstitch detail	1RFX	●	○	○	○	○	○	○	○	○	○
<b>ALLURE</b>	Sports style seats in Marston Mistral cloth with double overstitch detail	0IFX	●	○	○	○	○	○	○	○	○	○
	Sports style seats in Black Mistral Nappa leather (includes heated front seats)	8DFX	○	○	○	○	○	○	○	○	○	○
<b>GT LINE</b>	Sports style seats trimmed in leather effect & Oxford cloth with red overstitch detail	0NFJ	●			○			○	○	○	○
	Sports style seats trimmed in Black Mistral Nappa leather with red overstitch detail (includes heated front seats)	8DFJ	○			○			○	○	○	○
<b>GT</b>	Sports style seats trimmed in leather effect & alcantara with red overstitch detail	1UFJ	●			○			○	○	○	○
	Sports style seats trimmed in Black Mistral Nappa leather with red overstitch detail (includes heated front seats)	8DFJ	○			○			○	○	○	○



**Hurricane Grey**



**Bianca White**



**Aluminium**



**Nera Black**



**Twilight Blue**



**Cumulus Grey**



**Nimbus Grey**



**Magnetic Blue**



**Pearlescent White**



**Ultimate Red**

# CHOOSE YOUR INTERIOR TRIM & ALLOY WHEELS

## INTERIOR TRIM OPTIONS

● = Standard at no cost ○ = Option at extra cost

<b>ACCESS</b>	Comfort seats trimmed in Metax Mistral cloth	1PFX	●	
<b>ACTIVE</b>	Comfort seats trimmed in Metax Mistral cloth with overstitch detail	1RFX	●	
<b>ALLURE</b>	Sports style seats in Marston Mistral cloth with double overstitch detail	0IFX	●	
	Sports style seats in Black Mistral Nappa leather (includes heated front seats)	8DFX	○	
<b>GT LINE</b>	Sports style seats trimmed in leather effect & Oxford cloth with red overstitch detail	0NFJ	●	
	Sports style seats trimmed in Black Mistral Nappa leather with red overstitch detail (includes heated front seats)	8DFJ	○	
<b>GT</b>	Sports style seats trimmed in leather effect & alcantara with red overstitch detail	1UFJ	●	
	Sports style seats trimmed in Black Mistral Nappa leather with red overstitch detail (includes heated front seats)	8DFJ	○	

## ALLOY WHEEL OPTIONS

	ACCESS	ACTIVE	ALLURE	GT LINE	GT
15" steel wheels with Ambre trims	●				
16" Quartz alloy wheels		●			
16" Diamond alloy wheels			● <sup>1</sup>		
17" Rubis alloy wheels (Not available on Active & Allure BlueHDI 120 & Active Puretech 110)		○	●		
18" Saphir alloy wheels ((Not available on Allure BlueHDI 120)			○		
18" Diamant alloy wheels				●	●

**NB: Refer to option page for wheel option pricing**

**1. Allure 1.6 BlueHDI 120 manual is fitted with 16" 'Diamond' alloy wheel**



15" 'Ambre' Trim



16" 'Quartz' Alloy



16" 'Diamond' Alloy



17" 'Rubis' Alloy



18" 'Saphir' Alloy



18" 'Diamant' Alloy

# TECHNICAL SPECIFICATION

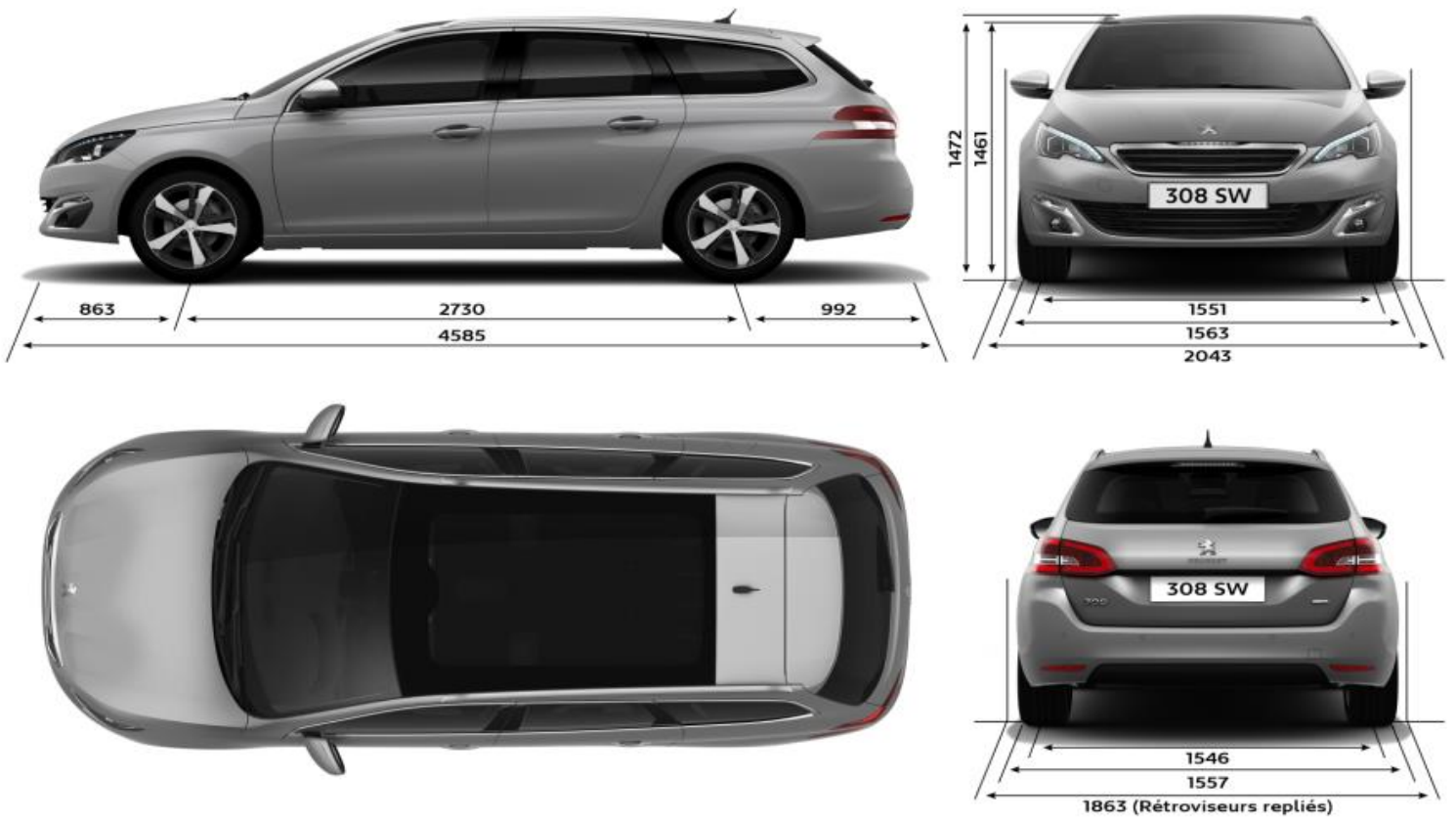


		Petrol			Diesel						
		1.2L PureTech 110 S&S 5-speed manual	1.2L PureTech 130 S&S 6-speed manual	1.2L PureTech 130 EAT6 S&S 6-speed Efficient Automatic Transmission	1.6L BlueHDi 100 S&S 5-speed manual	1.6L BlueHDi 120 S&S 6-speed manual	1.6L BlueHDi 120 EAT6 S&S 6-speed Efficient Automatic Transmission	2.0L BlueHDi 150 S&S 6-speed manual	2.0L BlueHDi 150 EAT6 S&S 6-speed Efficient Automatic Transmission	2.0L BlueHDi 180 EAT6 S&S 6-speed Efficient Automatic Transmission	
DRIVETRAIN	Fuel type	Petrol	Petrol	Petrol	Diesel	Diesel	Diesel	Diesel	Diesel	Diesel	
	Stop and Start functionality	●	●	●	●	●	●	●	●	●	
	Cubic capacity (cc)	1199	1199	1199	1560	1560	1560	1997	1997	1997	
	Maximum power hp (Kw)	110 (81) @ 5500	131 (96) @ 5500	131 (96) @ 5500	99 (73) @ 3750	120 (88) @ 3500	120 (88) @ 3500	150 (110) @ 4000	150 (110) @ 4000	181 (133) @ 3750	
	Maximum torque lb/ft (Nm)	151 (205) @ 1500	170 (230) @ 1750	170 (230) @ 1750	187 (254) @ 1750	221 (300) @ 1750	221 (300) @ 1750	273 (370) @ 2000	273 (370) @ 2000	295 (400) @ 2000	
	5 speed manual	●			●						
	6 speed manual		●			●		●			
6 speed automatic			●			●		●	●		
BRAKES	Front and rear discs	●	●	●	●	●	●	●	●	●	
SUSPENSIONS AND TYRES	Front suspension	Pseudo MacPherson									
	Rear suspension	De-formable Crossmember									
	Size - 15" wheels	195/65R15H									
	Size - 16" wheels	205/55R16V									
	Size - 17" wheels	225/45R17V									
	Size - 18" wheels	225/40R18W									
	Spare wheel (space saver)	●	●	●	●	●	●	●	●	●	
FUEL TANK	Capacity (litres)	53									
FUEL CONSUMPTION, EMISSIONS and PERFORMANCE (driver only)	15/16" wheels	Maximum speed (mph)	117	127	127	114	121	121			
		Acceleration 0-62 mph driver only (sec)	11.6	10	9.5	11.8	10.1	9.9			
		Urban drive cycle MPG (litres/100km)	53.3 (5.3)	48.7 (5.8)	50.4 (5.6)	65.7 (4.3)	78.5 (3.6) 78.5 (3.6)**	68.9 (4.1)			
		Extra Urban drive cycle MPG (litres/100km)	80.7 (3.5)	72.4 (3.9)	70.6 (4.0)	88.3 (3.2)	94.2 (3) 88.3 (3.2)**	83.1 (3.4)			
		Combined drive cycle MPG (litres/100km)	67.3 (4.2)	61.4 (4.6)	62.8 (4.5)	78.5 (3.6)	88.3 (3.2) 85.6 (3.3)**	76.3 (3.7)			
		Regulated Emission Standard	Euro 6	Euro 6	Euro 6	Euro 6	Euro 6	Euro 6			
		Carbon Dioxide (CO2) emissions (g/km)	99	106	106	94	85 88**	96			
	17/18" wheels	Maximum speed (mph)	117	124	123	111	117	117	130	130	135
		Acceleration 0-62 mph driver only (sec)	12.4	10.6	10.1	12.8	10.7	10.6	9.2	8.9	8.6
		Urban drive cycle MPG (litres/100km)	47.1 (6)	47.9 (5.9)	47.9 (5.9)	64.2 (4.4)	60.1 (4.7)	64.2 (4.4)	61.4 (4.6)	56.5 (5)	58.9 (4.8)
		Extra Urban drive cycle MPG (litres/100km)	68.9 (4.1)	68.9 (4.1)	65.7 (4.3)	88.3 (3.2)	80.7 (3.5)	78.5 (3.6)	80.7 (3.5)	76.3 (3.7)	76.3 (3.7)
		Combined drive cycle MPG (litres/100km)	58.9 (4.8)	58.9 (4.8)	57.6 (4.9)	76.3 (3.7)	72.4 (3.9)	72.4 (3.9)	72.4 (3.9)	67.3 (4.2)	68.9 (4.1)
		Regulated Emission Standard	Euro 6	Euro 6	Euro 6	Euro 6	Euro 6	Euro 6	Euro 6	Euro 6	Euro 6
		Carbon Dioxide (CO2) emissions (g/km)	111	111	112	96	102	102	102	109	107
VEHICLE WEIGHT INFORMATION (KG)	Gross vehicle weight	1825	1840	1855	1880	1900	1910	1970	2000	2020	
	Mass in service	1405	1420	1440	1460	1475	1495	1550	1580	1595	
	Kerb weight	1190	1190	1200	1200	1295	1310	1315	1420	1425	
	Gross train weight	2925	3040	2955	3080	3170	3110	3470	3400	3420	
	Maximum braked trailer weight	1100	1200	1100	1200	1300	1200	1500	1400	1400	
	Maximum tow ball weight	71	71	71	71	71	71	71	71	71	
	Turning circle (m)	5.40									
INSURANCE GROUPS	ACCESS	13E			16E						
	ACTIVE	13E	14E	14E	16E	20E	19E				
	ALLURE	13E	15E	15E		21E	21E	25E	25E		
	GT Line		15E	15E		22E	21E	26E	26E		
	GT									29A	

\*\*Allure 1.6 BlueHDi 120 S&S Manual is fitted with 16" 'Diamond' alloy wheel

# TECHNICAL SPECIFICATION (Continued)

## External Dimensions (mm)



## Boot Dimensions (litres/dm<sup>3</sup>)



NB. VDA refers to dm<sup>3</sup> measure

# FURTHER INFORMATION

## MANUFACTURERS RECOMMENDED RETAIL PRICE ON THE ROAD

The On the Road MRRP featured includes the following:

Tax band	CO2 (g/km)	First Year VED	Annual Tax	First Reg fee	Delivery Charge	VAT @ 20% on Delivery	Total OTR Costs
A	Up to 100	£0.00	£0.00	£55.00	£550.83	£110.17	<b>£716.00</b>
B	101-110	£0.00	£20.00	£55.00	£550.83	£110.17	<b>£716.00</b>
C	111-120	£0.00	£30.00	£55.00	£550.83	£110.17	<b>£716.00</b>
D	121-130	£0.00	£110.00	£55.00	£550.83	£110.17	<b>£716.00</b>
E	131-140	£130.00	£130.00	£55.00	£550.83	£110.17	<b>£846.00</b>
F	141-150	£145.00	£145.00	£55.00	£550.83	£110.17	<b>£861.00</b>
G	151-165	£185.00	£185.00	£55.00	£550.83	£110.17	<b>£901.00</b>
H	166-175	£300.00	£210.00	£55.00	£550.83	£110.17	<b>£1,016.00</b>
I	176-185	£355.00	£230.00	£55.00	£550.83	£110.17	<b>£1,071.00</b>
J	186-200	£500.00	£270.00	£55.00	£550.83	£110.17	<b>£1,216.00</b>
K	201-225	£650.00	£295.00	£55.00	£550.83	£110.17	<b>£1,366.00</b>
L	226-255	£885.00	£500.00	£55.00	£550.83	£110.17	<b>£1,601.00</b>
M	Over 255	£1,120.00	£515.00	£55.00	£550.83	£110.17	<b>£1,836.00</b>

VAT is calculated at 20%

VAT is not applicable to cars sold in the Channel Islands

## PEUGEOT 3 YEARS OF WARRANTY

All vehicles first registered in the UK and purchased from a UK Peugeot Dealer benefit from a Peugeot 2 year unlimited mileage manufacturer's warranty and a free optional additional 1 year of warranty provided by the Peugeot Dealer Network in the UK.

## PEUGEOT ASSISTANCE

All new Peugeots come with Peugeot Assistance, our breakdown assistance service.

Provided by the AA, Peugeot Assistance is available every minute of the day and night; 365 days of the year, for you and anyone else driving your Peugeot with your permission.

Full details are available at [www.peugeot.co.uk](http://www.peugeot.co.uk)

## TERMS AND CONDITIONS

Every endeavour has been made to ensure that the information, details and descriptions set out in this literature are correct, at the time of going to print.

It is our policy to continually improve our vehicles in every way. We reserve the right to modify our vehicles price, specification (including colour), equipment, accessories and characteristics or to discontinue any model, without notice, at any time.

To avoid any misunderstandings you are advised to check with your Peugeot Dealer the specification (including colour), equipment accessories and equipment relating to any Peugeot vehicle and the exact

Where a feature is described as an option in this publication it should be assumed that it is at extra cost unless specifically stated otherwise.

Issued by Sales and Marketing, Peugeot Motor Company PLC, Pinley House, Sunbeam Way, Coventry CV3 1ND.

For further information call Peugeot on 0845 200 1234 or visit our website at [www.peugeot.co.uk](http://www.peugeot.co.uk)



**PEUGEOT**