

# The BlueMotion Polo





## The future has arrived.

Imagine a car that offers the highest levels of economy, exemplary environmental friendliness, and an aerodynamic body style designed to turn heads. That's the new BlueMotion Polo. Restyled and redesigned to offer everything you could ask for in one small, perfectly formed package. Truly inspirational, the BlueMotion Polo gives you a glimpse into the automotive future. But most exciting of all. It's yours for the taking. Today.

Model shown is BlueMotion 1 with optional metallic paint.

## The hallmark of good design.

Restyled and redesigned, the BlueMotion Polo doesn't just look good, it achieves results too. As its CO<sub>2</sub> and fuel economy figures prove. The powerful body-coloured spoiler kit, developed exclusively for the BlueMotion Polo, gives a highly desirable streamlined effect. While its dynamic lines reduce the vehicle's air resistance, giving tangible benefits in terms of performance. Likewise, the exclusive 14 inch 'Jerez' alloy wheels enhance the sporting design, but also ensure outstanding roadholding. It's this partnership of form and function that epitomises the new BlueMotion Polo – the hallmark of good design.



Model shown is BlueMotion 1 with optional metallic paint.



## The future is looking good, today.

With its innovative design, aerodynamic styling and class-leading economy, the new BlueMotion Polo is fully prepared for the roads of tomorrow. To experience its exceptional thrift, dynamics and sporty appeal for yourself, simply arrange a test drive and discover what the future has in store. Today.

Model shown is BlueMotion 1 with optional metallic paint.

## No compromise on safety.

Despite its high level of standard equipment, Volkswagen has not compromised on safety. As you would expect, outstanding levels of reliability and protection include driver and front passenger airbags and side impact airbags in the front.

The ABS (Anti-lock Braking System) with integrated HBA (Hydraulic Brake Assist) ensures you stay safely on track, especially during emergency braking manoeuvres. And child safety is optimised, thanks to the innovative Isofix preparation for child seats, which anchor directly into the bodywork. With no compromise on safety, you can relax and use the BlueMotion Polo for what it's intended. Pure driving enjoyment.



Model shown is BlueMotion 1 with optional metallic paint.



01



02



03

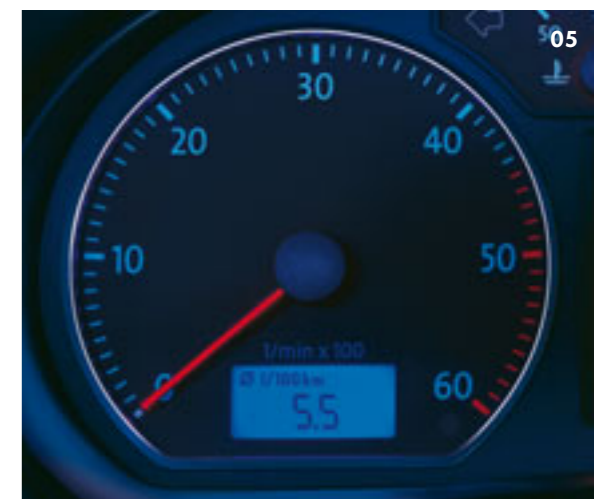


04

## Meeting your demands.

The new BlueMotion Polo may be undemanding when it comes to fuel consumption, but it's redesigned interior is equipped to the most demanding standards. Carefully crafted to ensure your total comfort, you'll find front electric windows (front and rear on the 5 door model) and central locking fitted as standard, whilst attention to detail ensures your main key features a built-in light for ease of use. The ergonomically designed interior ensures controls and storage compartments are all readily to hand, and the multifunction display enables you to keep an eye on important information about your trip.

- 01** Sumptuous: Sit inside the new BlueMotion Polo and experience its **spacious interior with high-quality materials** and outstanding workmanship. Interior shown is BlueMotion 1 Polo with optional metallic paint.
- 02** Stylish: **'Popcorn' upholstery** is sporty and hardwearing.
- 03** Relaxing: **Radio/MP3 compatible CD player** delivers first-class sound quality.
- 04** Comfortable: **Electric windows and central locking** ensure ease of use, with minimal effort.
- 05** Practical: The **multifunction computer** provides essential information about your journey, such as fuel consumption, exterior temperature and total mileage, and also has a trip counter.



05



01

## On closer inspection.

Look more closely and the new BlueMotion Polo does not disappoint. Precision workmanship ensures minimal gaps between panels, ensuring greater rigidity, better aerodynamics and less wind noise. Front headlights and indicators combine under one clear glass cover for more streamlined aesthetics and improved vehicle dynamics, while silver-coloured door mirrors with integrated indicators emphasise the sports appeal and give a more sculptured body line. A third brake light integrated into the rear spoiler not only enhances the vehicle aesthetics, but is an important addition to driving safety. And the body-coloured rear spoiler, side skirts, front bumper and rear bumper with striking silver-coloured insert, contribute significantly to the vehicle's aerodynamics and exceptional economy. When it comes to the finer details, the new BlueMotion Polo stands up to the closest scrutiny on every level. Whether you're talking aesthetics, quality or performance.

- 01** A **third brake light** integrated into the rear spoiler enhances aesthetics and improves driving safety.
- 02** The powerful **all-round spoiler kit** reduces air resistance, refining the vehicle's aerodynamics and improving economy.
- 03** Other distinctive features of the BlueMotion Polo include **body-coloured side bump strips, door handles, front bumper, rear bumper with silver-coloured insert, rear spoiler and front grille.**
- 04** Exclusive 14" **'Jerez' alloy wheels** with 165/70 R14 low rolling resistance tyres enhance sports appeal and give better roadholding.
- 05** **Silver-coloured door mirrors with integrated indicators** are both elegant and functional.
- 06** The **'BlueMotion' badge** at the rear symbolises excellent economy.



02



03



04



05



06

# Standard equipment.

## Standard items of equipment – BlueMotion 1

### Volkswagen service

- 3-year/60,000 miles warranty (whichever is soonest)
- 3-year paintwork warranty
- 12-year body protection warranty
- Volkswagen Roadside Assistance

Please see Service section for more details

### Exterior

- Alloy wheels – low weight, four 5J x 14 'Jerez' with 165/70 R14 low rolling resistance tyres and anti-theft wheel bolts
- BlueMotion styling pack – unique front bumper and rear bumper with silver-coloured insert
- Body-coloured bumper strips, side bump strips and door handles
- Galvanised body
- Halogen clear headlights, range adjustable
- Lockable fuel filler flap
- Silver-coloured door mirrors with integrated indicators
- Tinted glass

### Interior

- Chrome-plated internal door handles
- Upholstery – 'Popcorn' cloth

### Safety

- ABS (Anti-lock Braking System) with HBA (Hydraulic Brake Assist)
- Door side impact protection
- Driver's and front passenger's airbags
- Front head restraints, height-adjustable
- Front seat side impact airbags
- Height-adjustable front three-point seat belts with tensioners
- High level 3rd brake light
- Isofix preparation (for 2 rear child seats)
- Rear head restraints x 3

### Safety (continued)

- Rear three-point seat belts x 3
- Reflectors in front doors
- Rigid safety cell with front and rear crumple zones

### Function

- Blue instrument lighting
- Central locking
- Cup holder, front
- Driver's and front passenger's sun visors with vanity mirrors
- Dust and pollen filter
- Electric windows, front and rear (rear 5 door only)
- Electronic engine immobiliser
- Electrically heated and adjustable door mirrors
- Front comfort seats
- Front door side pockets
- Front wash/wipe with 4 speeds and interval delay
- Glovebox
- Heated rear window
- Heating and ventilation with 4 speed fan and air recirculation
- Height and reach adjustable steering wheel
- Interior lighting with delay
- Load lip protective shield
- Luggage compartment load lashing points x 4
- Luggage cover, removable
- Multifunction computer
- Non-smoking pack
- Power-assisted steering, speed-sensitive
- Radio/MP3 compatible CD player with RDS, 4 front speakers and roof aerial
- Rear wash/wipe with interval delay
- Rev counter
- Storage tray on dashboard
- Three-spoke steering wheel
- Tyre repair kit (in lieu of full size steel spare wheel)
- Warning 'lights on' buzzer
- 12V socket with cover

## Additional items of equipment – BlueMotion 2

### Function

- Air conditioning, 'Climatic' semi-automatic control
- Automatic coming home lighting function
- Illuminated vanity mirrors
- Leather trimmed three-spoke steering wheel, gear knob and handbrake grip
- Rain sensor and automatic dimming interior rear-view mirror
- Reading lights, front x 2
- Remote central locking and alarm with 2 folding keys

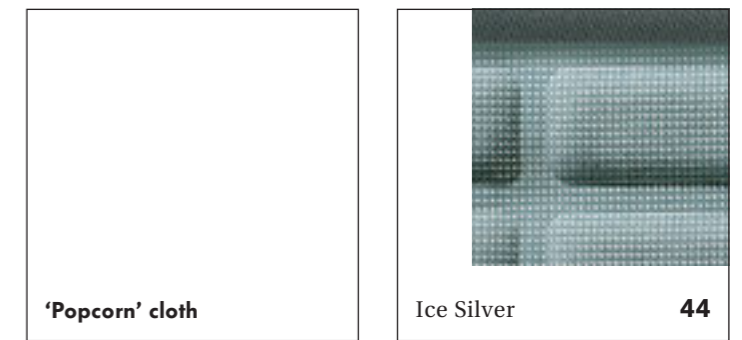
The above specifications are for information purposes only as our products are continually updated and changes may be made to the specifications at any time. If you require any specific feature, you must consult your authorised Volkswagen retailer who is regularly updated with any change in specification. Specifications are subject to change without notice.



## Paint.



## Upholstery.



\* Black, metallic and pearl effect paints are optional at extra cost.  
Please note: Screen technology does not allow for exact reproduction of the paint and upholstery colours.  
For further details, please contact your Volkswagen retailer.

# Combination.

| Seat upholstery              | Carpet | Dashboard  | Black A1* | Candy White B4 | Ice Silver metallic 9020* | Reflex Silver metallic 8E* | Grey Anthracite pearl effect F8* |
|------------------------------|--------|------------|-----------|----------------|---------------------------|----------------------------|----------------------------------|
| 'Popcorn' cloth upholstery ● |        |            |           |                |                           |                            |                                  |
| Ice Silver (44)              | Black  | Anthracite | ●         | ●              | ●                         | ●                          | ●                                |

● Available  
 Black, metallic and pearl effect paints are optional at extra cost.

## Good for your pocket and the planet.

Drive the new BlueMotion Polo and experience double the enjoyment as sporty performance combines with unprecedented levels of economy. A combination of cutting edge technology and refined dynamics enables the BlueMotion Polo to deliver an incredible 74.3 mpg on the Combined fuel cycle\*. And the icing on the cake – the highly efficient 1.4 litre TDI 80 PS engine with DPF (Diesel Particulate Filter) reduces carbon emissions compared to the standard vehicle. Which means you can have fun that's easier on your pocket and on the planet. The future really is in your hands with the new BlueMotion Polo.

\* Please see Engine section for fuel consumption and CO<sub>2</sub> emissions figures.



01 The 1.4 TDI 80 PS engine with DPF (Diesel Particulate Filter) delivers record-breaking economy, powerful performance and a CO<sub>2</sub> emission that makes it exempt from VED (Vehicle Excise Duty).

# 1.4 litre TDI DPF 80 PS.

## Technical specification.

### 1.4 litre TDI DPF 80 PS

|   |  |                        |
|---|--|------------------------|
| <b>Engine</b>                                   | Engine type  | Three cylinder diesel  |
|   | Cubic capacity, ltrs/cc                                      | 1.4/1422               |
|   | Max. output, PS <sup>(01)</sup> /kW<br>at rpm                | 80/59<br>4000          |
|   | Max. torque, lbs.ft/Nm<br>at rpm                             | 144/195<br>1800-2200   |
|   | Gearbox  | Five speed manual      |
| <b>Weights, kgs</b>                             | Unladen weight <sup>(02)</sup>                               | 1084                   |
|   | Gross vehicle weight   | 1550                   |
|   | Payload <sup>(02)</sup>                                      | 466                    |
|   | Axle load limit: Front<br>Rear                               | 860<br>740             |
| <b>Trailer load limits, kgs <sup>(03)</sup></b> | Braked 12% incline   | 800                    |
|   | Unbraked   | 580                    |
|   | Towbar load  | 50                     |
|   | Max. roof load   | 75                     |
| <b>Performance</b>                              | Top speed †, mph (km/h)                                      | 109 (176)              |
|   | Acceleration, secs 0 - 62 mph                                | 12.8                   |
|   | ABI insurance group  | 5                      |
| <b>Environmental information</b>                | Fuel grade, minimum  | Diesel <sup>(04)</sup> |
|   | Fuel tank capacity, galls/ltrs                               | 10.0/45                |
|   | Official fuel consumption mpg/ltr per 100 km <sup>(05)</sup> |                        |
|   | Urban  | 57.6/4.9               |
|   | Extra-urban  | 88.3/3.2               |
|   | Combined   | 74.3/3.8               |
|   | Official CO <sub>2</sub> emission, g/km <sup>(06)</sup>      | 99                     |
| Emission class                                  | EURO 4   |                        |
| Noise, dB                                       | 71   |                        |

† Where the law permits.

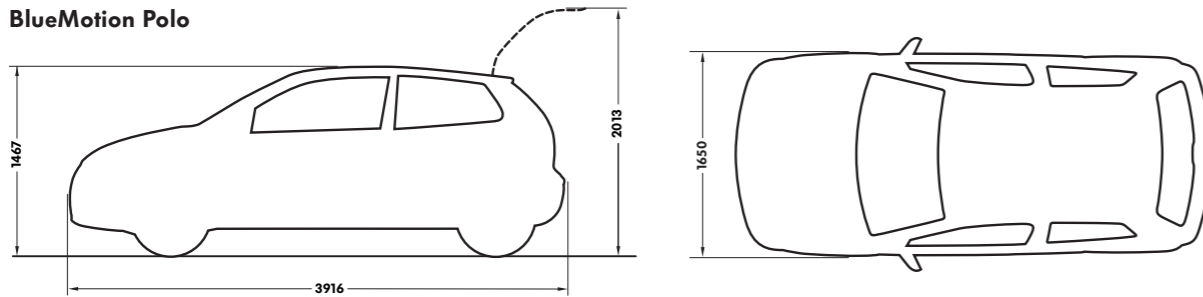
## Notes.

- 01) The maximum power output figures are quoted in PS (or Pferdestärke, which is the metric equivalent of horsepower). To convert from metric to imperial horsepower, divide the PS figure by 1.0139.
- 02) Figures are calculated in accordance with manufacturer's criteria. Vehicle unladen weight ranges with 90% tank capacity without driver (75 kg). The individual unladen weight depends on the specification of the vehicle, this then reduces the possible payload accordingly.
- 03) With increasing altitude the engine performance diminishes. From 1,000 m above sea level and for every 1,000 m thereafter 10% of the vehicle/trailer weight (trailer weight + gross vehicle weight) must be deducted.
- 04) The use of RME and FAME (bio diesel) is not possible.
- 05) Official fuel consumption according to EU Directive 99/94. The consumption calculation according to 1999/100/EC is based on the actual unladen weight of the vehicle. Additional specifications can lead to a higher weight class and hence to consumption figures of this higher weight class. The driving style, road and traffic conditions, environmental influences and vehicle condition can in practice lead to consumption figures, which may differ from those calculated with this standard.
- 06) Increased weight of a vehicle, including higher trim levels and the addition of options will have a detrimental influence on the level of fuel consumption and CO<sub>2</sub> emissions produced. The CO<sub>2</sub> and fuel consumption figures are obtained from tests on a representative vehicle of the type, conducted and approved in accordance with Council Directive 80/1268/EEC as amended by Directive 1999/100/EC (or later) on the approximation of the laws of the member states relating to the carbon dioxide emissions and the fuel consumption of motor vehicles.

## Dimensions.

|                            |                                    |      |
|----------------------------|------------------------------------|------|
| <b>Exterior dimensions</b> | Length, mm                         | 3916 |
|                            | Width – excluding door mirrors, mm | 1650 |
|                            | Width – opened front doors, mm     | 3897 |
|                            | Height, mm                         | 1467 |
|                            | Height – opened bonnet/floor, mm   | 1719 |
|                            | Height – opened tailgate/floor, mm | 2013 |
|                            | Wheelbase, mm                      | 2466 |

BlueMotion Polo



## The technology.

### Engine

- Front transversely-mounted engine.
- 1.4 litre/80 PS <sup>(01)</sup> (59 kW) diesel engine. Three cylinder in-line engine, cast iron cylinder block, alloy cylinder head with single overhead camshaft, two valves per cylinder, electronically controlled direct injection with pump injector unit ('Pumpe Düse'), oil pump, intercooler, exhaust gas recirculation, turbocharger with variable turbine geometry, catalytic coated Diesel Particulate Filter (DPF).

### Brake system

- 1.4 litre 80 PS diesel engine
- Servo assisted, diagonally split circuit with ABS
- Front: Ventilated discs
- Rear: Self-adjusting drums

### Running gear

- Front axle: Independent with McPherson struts and coil springs
- Rear axle: Torsion beam with trailing arms
- Turning circle: 34.7 feet/10.6 metres

### Steering

- Power-assisted rack and pinion

### Transmission

- Front-wheel drive
- Five speed manual gearbox

# Volkswagen service for your peace of mind.

## The Volkswagen Warranty.

### Three-year Warranty.

All Volkswagen Polos come with a three-year/60,000 miles warranty, which protects your car against the failure of most mechanical and electrical components due to manufacturing defects. This comprises a two-year manufacturer's warranty with unlimited mileage plus a further one-year/60,000 miles (whichever is soonest) Retailer Warranty. Should the mileage exceed 60,000 miles within the first two years, the manufacturer's two-year warranty will still be valid. If an additional warranty for subsequent years or higher mileage is desired, it may be purchased from an authorised Volkswagen retailer or repairer; however, this additional warranty must be purchased before the mileage reaches 60,000\*. Full details of the three-year warranty are available from your authorised Volkswagen retailer or repairer.

\* All warranty work must be completed by an authorised Volkswagen retailer or repairer.

### Three-year Paint Warranty.

The paintwork of the Polo is covered against manufacturing defects for a period of three years. Naturally, the Polo must be cared for in compliance with the operating instructions which will be found in your vehicle handbook. Please consult your authorised Volkswagen retailer or repairer for full warranty details.

### 12-year Body Protection Warranty.

The internal body sections and panels of the Polos are covered against rusting through from the inside for 12 years. Naturally, the Polo must be cared for in compliance with the operating instructions. Please consult your authorised Volkswagen retailer or repairer for full warranty details.

## Service Intervals.

Volkswagen are pleased to offer you a choice on how your Polo is serviced. The appropriate selection is entirely dependent on how the car is likely to be driven and its general use. To help you identify which type of service would be most suitable, please refer to the following guide.

The Time and Distance Service is recommended for vehicles that will cover less than 10,000 miles in 12 months and if the vehicle is likely to be used in the following way:

- Predominantly urban driving, short journeys with frequent cold starts.
- Activities regularly producing high engine loading, e.g. frequent hill climbs, driving with vehicle fully loaded and towing.
- Uneconomical driving style using high rpms with heavy acceleration and heavy braking.

The service intervals for the Time and Distance Service are as follows:

- Oil change service  
Every 10,000 miles/1 year (whichever is soonest).
- Inspection service  
Every 20,000 miles/2 years (whichever is soonest).

The LongLife Service is recommended for vehicles with a daily mileage of more than 25 miles where the vehicle is driven regularly mainly on longer distance journeys.

The vehicle is driven mainly at a constant speed with minimum vehicle and engine loading, minimal towing and driven in an economical manner.

With the LongLife Service the vehicle can cover anywhere between 10,000<sup>†</sup> and a maximum of 20,000<sup>†</sup> miles or 24 months (whichever is soonest).

<sup>†</sup> Please note that all mileages are approximate as the service indicator system uses kilometres as the distance measurement.

Please consult your authorised Volkswagen retailer or repairer for advice and full details.

### Approved Accessories.

A comprehensive range of accessories from alloy wheels to carpet mats is available to complement the factory-fitted option list. Volkswagen approved accessories purchased from and fitted by your authorised Volkswagen retailer at the point of vehicle sale will also benefit from the three-year vehicle warranty.

## Volkswagen Insurance<sup>‡</sup>.

Competitive and comprehensive motor insurance designed especially for Volkswagen drivers. All new and Approved Used Volkswagens come with complimentary seven-day cover upon request – we'll e-mail a cover note straight to your retailer, enabling them to tax your car easily. This way, you can drive straight out of the showroom. Taking out annual cover is easy and it can start when the seven-day cover expires.

For more information contact your local Volkswagen retailer or call 0800 051 3136.

<sup>‡</sup> Volkswagen Insurance is underwritten and administered by Zurich Insurance Company. Volkswagen Insurance is a trading name of Volkswagen Insurance Service (Great Britain) Limited which is an appointed representative of Volkswagen Financial Services (UK) Limited. Zurich Insurance Company and Volkswagen Financial Services (UK) Limited are both authorised and regulated by the Financial Services Authority.

### Extended Warranty.

You may purchase additional protection from your authorised Volkswagen retailer or repairer, or contact 0870 9000 115.

### Volkswagen Finance<sup>±</sup>.

Volkswagen Finance specialises in providing funding solutions for Volkswagen drivers. Whether your Volkswagen is for private or business use, you can choose from a range of funding options.

- Solutions – a personal contract plan
- Hire purchase
- Lease purchase
- Finance lease
- Contract hire

With all Volkswagen Finance products you can choose a fixed-cost maintenance plan to help you budget for your servicing and maintenance costs.

No matter what finance product you choose, your local Volkswagen retailer will be able to provide you with a personalised quote that could meet your budget and vehicle needs.

<sup>±</sup> Volkswagen Finance is a trading name of Volkswagen Financial Services (UK) Limited. An offer of finance depends on certain conditions. Available to people over 18 in the UK only.

## Volkswagen Roadside Assistance.

Every new car is registered for Volkswagen Roadside Assistance for one year. This provides vehicle home and roadside recovery in the unlikely event of a breakdown in the UK and Europe (subject to conditions). Volkswagen Roadside Assistance can also be purchased for subsequent years. For full details, please contact your authorised Volkswagen retailer or repairer.

### Tax Free Sales.

For full details, please contact your authorised Volkswagen retailer.

### CO<sub>2</sub> Emission.

Increased weight of a vehicle, including higher trim levels and the addition of options will have a detrimental influence on the level of fuel consumption and CO<sub>2</sub> emissions produced.

The CO<sub>2</sub> and fuel consumption figures are obtained from tests on a representative vehicle of the type, conducted and approved in accordance with Council Directive 80/1268/EEC as amended by Directive 1999/100/EC (or later) on the approximation of the laws of the member states relating to the carbon dioxide emissions and the fuel consumption of motor vehicles.

**Please Note:** Some illustrations in this brochure do not necessarily reflect UK specifications and may not be available. In particular, controls and some items of equipment are positioned differently for the UK.

The specifications contained in this brochure are for information purposes only and are subject to change. If you require any specific feature, you must consult your authorised Volkswagen retailer who is regularly updated with any change in specification. Please check model availability and full specification details with your authorised Volkswagen retailer prior to ordering.

Note: We would like to advise you that telephone calls to Volkswagen Customer Care may be monitored and recorded as part of our training and quality assurance processes. All our monitoring and recording processes meet Ofcom regulations.