

EFFECTIVE FROM 26.4.2018



Volkswagen

THE TIGUAN

PRICE AND SPECIFICATION GUIDE





Model shown is Tiguan R-Line with optional Head-up Display and premium signature paint.

CONTENTS

PAGE 03	MODEL PRICES
PAGE 06	STANDARD EQUIPMENT
PAGE 11	FACTORY-FITTED OPTIONS
PAGE 18	ACCESSORIES
PAGE 19	VOLKSWAGEN WARRANTY AND SERVICE PLAN
PAGE 22	VED AND ADDITIONAL 'ON THE ROAD' COSTS – 2018
PAGE 23	ENVIRONMENTAL INFORMATION
PAGE 24	ADBLUE®
PAGE 26	COMPANY CAR TAXATION CHART
PAGE 27	COMPANY CAR TAXATION COMPARISON
PAGE 28	VOLKSWAGEN SERVICE

This recommended retail price list supersedes all previous recommended retail price lists and is effective from 26.4.2018. All recommended 'On the road' retail prices, recommended retail prices and specifications are correct at the time of going to press. These prices and specifications may be subject to change without notice.

VOLKSWAGEN SERVICE PLAN – RETAIL SALES ONLY

For vehicles under 1 year old set to the Fixed Service regime that has not had its first service, comprising first two manufacturer's scheduled services;

- 'Oil service' including oil filter change
- 'Oil service' including oil filter change and 'Inspection service' plus a pollen filter replacement (if required)

Excludes electric vehicles. Service plan covers first two consecutive services, limited to 1x 'Oil service' and 1x 'Oil and Inspection service'. T&Cs apply. All vehicles must be set to the Fixed Service regime by the retailer. Maximum age of car is 12 months (Service plan must be taken out before first service is due). Additional work, including wear and tear is excluded. Servicing must be carried out in line with the requirement of the Service Schedule. All work must be carried out by an Authorised Volkswagen Repairer. Offers may be varied or withdrawn at any time. Plan validity is dependent on required payments received. Administered by Volkswagen Financial Services. Retail sales only. For pricing and further details, please consult your authorised Volkswagen retailer or visit www.volkswagen.co.uk

Front cover model shown is Tiguan R-Line with optional Head-up Display and premium signature paint.

MODEL PRICES

5-DOOR RANGE.		Fuel	Transmission	Output, PS	CO ₂ emission, g/km ¹	Basic Recommended Retail £	VAT £	Total Recommended Retail £	Additional 'On the road' Costs £ ²	Manufacturer's Recommended 'On the road' Retail £ ²	P11D Value £ ³	BIK % ⁴	ABI Insurance Group ⁵
S	1.4 ltr TSI 2WD	Petrol	6-spd manual	125	135	18,662.50	3,732.50	22,395.00	860.00	23,255.00	22,995.00	28	11E
	1.4 ltr TSI ACT 2WD [†]	Petrol	6-spd manual [†]	150	130	19,495.83	3,899.17	23,395.00	820.00	24,215.00	23,995.00	27	14E
	2.0 ltr TDI SCR 2WD	Diesel	6-spd manual	115	123	20,104.17	4,020.83	24,125.00	860.00	24,985.00	24,725.00	29	11E
	2.0 ltr TDI SCR 2WD	Diesel	6-spd manual	150	123	21,312.50	4,262.50	25,575.00	860.00	26,435.00	26,175.00	29	15E
	2.0 ltr TDI SCR 4MOTION	Diesel	6-spd manual	150	139	22,616.67	4,523.33	27,140.00	1,170.00	28,310.00	27,740.00	32	15E
	2.0 ltr TDI SCR 4MOTION	Diesel	7-spd auto DSG	150	147	23,858.33	4,771.67	28,630.00	1,170.00	29,800.00	29,230.00	34	15E
SE	1.4 ltr TSI 2WD	Petrol	6-spd manual	125	137	20,120.83	4,024.17	24,145.00	860.00	25,005.00	24,745.00	28	11E
	1.4 ltr TSI ACT 2WD [†]	Petrol	6-spd manual [†]	150	132	20,954.17	4,190.83	25,145.00	860.00	26,005.00	25,745.00	27	14E
	2.0 ltr TDI SCR 2WD	Diesel	6-spd manual	150	125	22,770.83	4,554.17	27,325.00	860.00	28,185.00	27,925.00	30	16E
	2.0 ltr TDI SCR 2WD	Diesel	7-spd auto DSG	150	129	24,104.17	4,820.83	28,925.00	860.00	29,785.00	29,525.00	30	16E
	2.0 ltr TDI SCR 4MOTION	Diesel	6-spd manual	150	141	24,075.00	4,815.00	28,890.00	1,170.00	30,060.00	29,490.00	33	15E
	2.0 ltr TDI SCR 4MOTION	Diesel	7-spd auto DSG	150	149	25,316.67	5,063.33	30,380.00	1,170.00	31,550.00	30,980.00	34	15E
2.0 ltr TDI SCR 4MOTION	Diesel	7-spd auto DSG	190	149	26,358.33	5,271.67	31,630.00	1,170.00	32,800.00	32,230.00	34	20E	
SE NAVIGATION	1.4 ltr TSI 2WD	Petrol	6-spd manual	125	137	20,725.00	4,145.00	24,870.00	860.00	25,730.00	25,470.00	28	11E
	1.4 ltr TSI ACT 2WD [†]	Petrol	6-spd manual [†]	150	132	21,558.33	4,311.67	25,870.00	860.00	26,730.00	26,470.00	27	15E
	1.4 ltr TSI ACT 2WD [†]	Petrol	6-spd auto DSG [†]	150	140	22,891.67	4,578.33	27,470.00	860.00	28,330.00	28,070.00	29	15E
	1.4 ltr TSI ACT 4MOTION [†]	Petrol	6-spd manual [†]	150	148	22,862.50	4,572.50	27,435.00	860.00	28,295.00	28,035.00	30	16E
	1.4 ltr TSI ACT 4MOTION [†]	Petrol	6-spd auto DSG [†]	150 [†]	155	24,104.17	4,820.83	28,925.00	1,170.00	30,095.00	29,525.00	32	16E
	2.0 ltr TDI SCR 2WD	Diesel	6-spd manual	150	125	23,375.00	4,675.00	28,050.00	860.00	28,910.00	28,650.00	30	16E
	2.0 ltr TDI SCR 2WD	Diesel	7-spd auto DSG	150	129	24,708.33	4,941.67	29,650.00	860.00	30,510.00	30,250.00	30	16E
	2.0 ltr TDI SCR 4MOTION	Diesel	6-spd manual	150	141	24,679.17	4,935.83	29,615.00	1,170.00	30,785.00	30,215.00	33	15E
	2.0 ltr TDI SCR 4MOTION	Diesel	7-spd auto DSG	150	149	25,920.83	5,184.17	31,105.00	1,170.00	32,275.00	31,705.00	34	15E
	2.0 ltr TDI SCR 4MOTION	Diesel	7-spd auto DSG	190	149	26,962.50	5,392.50	32,355.00	1,170.00	33,525.00	32,955.00	34	20E

1 Fuel consumption and CO₂ emissions are standard EU test figures for comparative purposes, and may not reflect 'real world' driving results. For full details, please see Environmental Information on page 23.

CO₂ emissions shown refer to standard specification only. Adding larger optional alloy wheels can increase CO₂ emissions which may affect VED band, BIK% and recommended 'On the road' retail price.

2 For full details of 'First year rate' VED (Vehicle Excise Duty), delivery to retailer, number plates and vehicle first registration fee included in the recommended 'On the road' retail price, please see page 22.

3 P11D value = Total recommended retail price + delivery to retailer £480.00, + number plates £20, + VAT £100.00 (calculated by reference to total of delivery to retailer + number plates). P11D value is based on standard specification model with no factory-fitted options or other accessories.

4 The BIK % figure quoted includes the 4% diesel supplement, which is effective as of 6.4.2018, where applicable.

5 The ABI insurance group is the recommended insurance rating set by the Association of British Insurers. Please note that insurance group ratings are purely advisory. They are used by insurers (ABI members and Lloyd's syndicates) as one of the factors in calculating premiums. Insurers are not required to follow the advisory group ratings and they may depart from them if they so wish.

† Please note these models are only available from stock and are not available to factory order.

SCR (Selective Catalytic Reduction) requires AdBlue®, please see page 24 or visit www.volkswagen.co.uk/technology/adblue for more details.

MODEL PRICES (CONTINUED)

5-DOOR RANGE.		Fuel	Transmission	Output, PS	CO ₂ emission, g/km ¹	Basic Recommended Retail £	VAT £	Total Recommended Retail £	Additional 'On the road' Costs £ ²	Manufacturer's Recommended 'On the road' Retail £ ²	P11D Value £ ³	BIK % ⁴	ABI Insurance Group ⁵
SEL	1.4 ltr TSI ACT 2WD [†]	Petrol	6-spd auto DSG [†]	150	140	24,204.17	4,840.83	29,045.00	860.00	29,905.00	29,645.00	29	17E
	2.0 ltr TSI 4MOTION [†]	Petrol	6-spd manual [†]	180	165	25,308.33	5,061.67	30,370.00	1,170.00	31,540.00	30,970.00	34	21E
	2.0 ltr TSI 4MOTION	Petrol	7-spd auto DSG	180	170	26,550.00	5,310.00	31,860.00	1,170.00	33,030.00	32,460.00	35	21E
	2.0 ltr TDI SCR 2WD	Diesel	6-spd manual	150	125	24,687.50	4,937.50	29,625.00	860.00	30,485.00	30,225.00	30	17E
	2.0 ltr TDI SCR 2WD	Diesel	7-spd auto DSG	150	129	26,020.83	5,204.17	31,225.00	860.00	32,085.00	31,825.00	30	17E
	2.0 ltr TDI SCR 4MOTION	Diesel	6-spd manual	150	141	25,991.67	5,198.33	31,190.00	1,170.00	32,360.00	31,790.00	33	16E
	2.0 ltr TDI SCR 4MOTION	Diesel	7-spd auto DSG	150	149	27,233.33	5,446.67	32,680.00	1,170.00	33,850.00	33,280.00	34	16E
	2.0 ltr TDI SCR 4MOTION	Diesel	7-spd auto DSG	190	149	28,275.00	5,655.00	33,930.00	1,170.00	35,100.00	34,530.00	34	21E
	2.0 ltr BiTDI SCR 4MOTION	Diesel	7-spd auto DSG	240	167	30,137.50	6,027.50	36,165.00	1,485.00	37,650.00	36,765.00	37	26E
	R-LINE	1.4 ltr TSI ACT 2WD [†]	Petrol	6-spd auto DSG [†]	150	140	26,133.33	5,226.67	31,360.00	860.00	32,220.00	31,960.00	29
2.0 ltr TSI 4MOTION [†]		Petrol	6-spd manual [†]	180	165	27,237.50	5,447.50	32,685.00	1,170.00	33,855.00	33,285.00	34	21E
2.0 ltr TSI 4MOTION		Petrol	7-spd auto DSG	180	170	28,479.17	5,695.83	34,175.00	1,170.00	35,345.00	34,775.00	35	21E
2.0 ltr TDI SCR 2WD		Diesel	6-spd manual	150	125	26,616.67	5,323.33	31,940.00	860.00	32,800.00	32,540.00	30	18E
2.0 ltr TDI SCR 2WD		Diesel	7-spd auto DSG	150	129	27,950.00	5,590.00	33,540.00	860.00	34,400.00	34,140.00	30	18E
2.0 ltr TDI SCR 4MOTION		Diesel	6-spd manual	150	141	27,920.83	5,584.17	33,505.00	1,170.00	34,675.00	34,105.00	33	17E
2.0 ltr TDI SCR 4MOTION		Diesel	7-spd auto DSG	150	149	29,162.50	5,832.50	34,995.00	1,170.00	36,165.00	35,595.00	34	17E
2.0 ltr TDI SCR 4MOTION		Diesel	7-spd auto DSG	190	149	30,204.17	6,040.83	36,245.00	1,170.00	37,415.00	36,845.00	34	21E
2.0 ltr BiTDI SCR 4MOTION		Diesel	7-spd auto DSG	240	167	31,962.50	6,392.50	38,355.00	1,485.00	39,840.00	38,955.00	37	27E

1 Fuel consumption and CO₂ emissions are standard EU test figures for comparative purposes, and may not reflect 'real world' driving results. For full details, please see Environmental Information on page 23.

CO₂ emissions shown refer to standard specification only. Adding larger optional alloy wheels can increase CO₂ emissions which may affect VED band, BIK% and recommended 'On the road' retail price.

2 For full details of 'First year rate' VED (Vehicle Excise Duty), delivery to retailer, number plates and vehicle first registration fee included in the recommended 'On the road' retail price, please see page 22.

3 P11D value = Total recommended retail price + delivery to retailer £480.00, + number plates £20, + VAT £100.00 (calculated by reference to total of delivery to retailer + number plates). P11D value is based on standard specification model with no factory-fitted options or other accessories.

4 The BIK % figure quoted includes the 4% diesel supplement, which is effective as of 6.4.2018, where applicable.

5 The ABI insurance group is the recommended insurance rating set by the Association of British Insurers. Please note that insurance group ratings are purely advisory. They are used by insurers (ABI members and Lloyd's syndicates) as one of the factors in calculating premiums. Insurers are not required to follow the advisory group ratings and they may depart from them if they so wish.

† Please note these models are only available from stock and are not available to factory order.

SCR (Selective Catalytic Reduction) requires AdBlue®, please see page 24 or visit www.volkswagen.co.uk/technology/adblue for more details.



Model shown is Tiguan SEL 4MOTION with optional 'Outdoor' pack, 20" 'Miramar' grey metallic alloy wheels, Dynamic Chassis Control (DCC) and metallic paint.

EFFECTIVE FROM 26 APRIL 2018.

THE TIGUAN - 05

MAIN ITEMS OF STANDARD SPECIFICATION

STANDARD ITEMS OF EQUIPMENT: S

VOLKSWAGEN SERVICE

3-year/60,000 miles warranty (whichever is soonest)

3-year paintwork warranty

12-year body protection warranty

Volkswagen Roadside Assistance

Exclusions and terms apply, please see page 28 for more details

4MOTION – 4 WHEEL DRIVE MODELS

4MOTION Active Control. Four driving modes: On road, Off-road, Off-road Individual and Snow. 4MOTION models only (see pages 03-04 for further details)

Driver profile selection – choice of three settings: Eco, Normal and Sport modes

WHEELS AND SUSPENSION

Alloy wheels, four 7J x 17" 'Montana' with 215/65 R17 low rolling resistance tyres and anti-theft wheel bolts

Steel space saver spare wheel (not 2.0 BiTDI 240 PS DSG)

EXTERIOR

Black grained lower door protectors

Body-coloured bumpers and door handles

Body-coloured door mirrors with integrated indicators

Chrome trim on radiator grille

Halogen clear headlights, range adjustable via infotainment system

EXTERIOR (CONTINUED)

LED rear number plate lights

Rear wash/wipe with intermittent wipe

Roof rails, black

Windscreen wiper with intermittent wipe and 4 position delay

18° angle of approach

INTERIOR

Carpet mats, front and rear

Cup holders, front x 2

'Diamond Silver' decorative inserts in dash and centre console

Front centre armrest, with storage compartment, longitudinal and height adjustable and two rear air vents

Glovebox, cooled

Height and reach adjustable steering wheel

Instrument lighting, white adjustable panel illumination

Interior light delay

Leather trimmed three-spoke steering wheel

Load lashing points x 4, in luggage compartment

Luggage compartment cover, removable

Luggage compartment light

Reading lights, front x 2

Seating

– Upholstery – 'Miltano' cloth

– Front seats with height adjustment

– Sliding rear bench seat

– Split folding rear seat backrests, 40:20:40

Storage compartment in driver's and front passenger's door (for 1.5 litre bottle)

INTERIOR (CONTINUED)

Storage compartment in rear doors

Storage compartment with soft-touch opening cover, dashboard

Storage compartments in luggage area, left and right

Vanity mirrors

Variable boot floor, height adjustable and removable

12V socket in centre console storage area

12V socket in luggage compartment

12V socket on rear of front centre armrest

SAFETY AND SECURITY

Active bonnet – sensor controlled pedestrian protection system to raise bonnet away from engine compartment in the event of an impact

Airbags

– Curtain airbag system

– Driver's and front passenger's airbags with passenger's airbag deactivation switch

– Driver's knee airbag

– Front seat side impact airbags

Alarm with interior protection, with deactivation via infotainment system

Automatic coming/leaving home lighting function

Automatic hazard lights activation under emergency braking

Disc brakes, front and rear, front ventilated

Driver's and front passenger's safety-optimised head restraints

Electronic engine immobiliser

SAFETY AND SECURITY (CONTINUED)

ESC (Electronic Stability Control) – includes EDL (Electronic Differential Lock) and ASR (Traction Control), EDTC (Engine Drag Torque Control) and trailer stabilisation function

Height-adjustable front three-point seat belts with tensioners

High level 3rd brake light

Isofix child seat preparation, easy-fit (for 2 outer rear seats)

Misfuel prevention device for diesel engines

Remote central locking with 2 remote folding keys

Rigid safety cell with front and rear crumple zones

Two-tone horn

Tyre pressure loss indicator

Warning sound and light for front seat belts if unfastened

Warning triangle

XDS electronic differential lock for improved traction and handling

3 rear head restraints

3 rear three-point seat belts

COMFORT AND CONVENIENCE

Air conditioning, manual

Automatic dimming interior rear-view mirror

Electric windows, front and rear

Electrically heated and adjustable door mirrors

Heated rear window

Rain sensor

IN-CAR ENTERTAINMENT AND COMMUNICATIONS

Composition Media infotainment system

- 8.0" colour touch-screen
- Bluetooth telephone and audio connection for compatible devices¹
- Car information display
- DAB digital radio receiver
- Music playback, MP3, WMA and AAC files
- SD card reader
- Simultaneous pairing of 2 compatible mobile devices
- Single CD player
- SMS functionality – read, compose and send SMS messages using touch-screen display (when stationary, compatible Android smartphones only)
- 'Think Blue. Trainer.' Driver tips and journey analysis
- Title and cover art display
- USB connection (compatible products only) and Aux-in
- 4 x 20 watt output
- 8 speakers, front and rear

Premium USB cable (choice of either Apple or Android smartphone compatibility)

DRIVER'S ASSISTANCE

Coasting function (4MOTION models only)

Dusk sensor, automatic driving lights

Electronic parking brake – with auto hold function

Front Assist, radar sensor controlled distance monitoring system, City emergency braking system and Predictive Pedestrian Protection

Lane Assist

Power-assisted steering, speed-sensitive

Remote tailgate unlocking, via key fob

Warning 'lights on' sound

Warning sound and light for doors and tailgate if open

EFFICIENCY

Battery regeneration (recuperation – energy recovery during braking)

Multifunction computer, includes visual gear change recommendation for improved fuel consumption

Start/Stop function



4MOTION Active Control.

¹ Devices must be Bluetooth HFP (Hands Free Profile) compatible, please contact your authorised Volkswagen retailer for specific phone compatibility. The specifications listed are for information purposes only as our products are continually updated and changes may be made to the specifications at any time. If you require any specific feature, please consult your authorised Volkswagen retailer who is regularly updated with any change in specification. Specifications are subject to change without notice.

ADDITIONAL ITEMS OF STANDARD EQUIPMENT: SE (OVER S)

WHEELS AND SUSPENSION

Alloy wheels, four 7J x 18" 'Patagonia' with 235/55 R18 mobility self-sealing tyres and anti-theft wheel bolts

EXTERIOR

Black grained lower door protectors with chrome insert (not R-Line)

Chrome side window surrounds

Front air intake with chrome strip

Front fog lights with static cornering function

Rear tinted glass from B-pillar backwards, approx. 65% tinted

Roof rails, silver anodised

INTERIOR

Front footwell illumination

Leather trimmed three-spoke multifunction steering wheel and gear knob. Including paddle shift (auto DSG only)

Seating

- Upholstery - 'Rhombus' cloth
- Driver's and front passenger's under seat drawer (not R-Line models)
- Foldable front passenger seat backrest
- Folding tables on the back of front seats. Non-slip rubber coated with cup holder and cable secure hook. 4 adjustable positions, including lectern position for reading or tablet viewing
- Front comfort seats with manual height and lumbar adjustment
- Front seat back storage pockets

INTERIOR (CONTINUED)

Load-through provision with two cup holders when folded down

Reading lights, front x 2

Storage compartment in roof for sunglasses

'Titan Silver' decorative inserts in dash and door panels

Vanity Mirrors, illuminated

SAFETY AND SECURITY

PreCrash preventive occupant protection

CAR-NET

Car-Net 'App-Connect'¹

- Combines the functionality of Apple 'CarPlay', Google 'Android Auto' and 'MirrorLink'[™] allowing 'mirroring' of smartphone display on the infotainment touch-screen via USB connection



¹ Only operable in conjunction with compatible smartphones including iPhone 5 and above. Display and operation of certified apps including audio and voice control (if supported by the app). Usage of certified apps only while driving. Please see www.volkswagen.co.uk to check smartphone compatibility.

ADDITIONAL ITEMS OF STANDARD EQUIPMENT: SE NAVIGATION (OVER SE)

IN-CAR ENTERTAINMENT AND COMMUNICATIONS

Discover Navigation infotainment system (in addition to Composition Media infotainment system)

- 8.0" colour touch-screen
- Branded points of interest
- Dynamic navigation based on TMC+
- Preloaded European navigation data
- Speed Limit Display¹
- Three route options (Fast, Short, Eco)
- Volkswagen Media Control² - allows remote control of the infotainment system via smartphone or tablet
- 2D/3D map view

CAR-NET

Car-Net 'Guide and Inform'³ - 3-year subscription

- Providing online access to a range of useful information such as traffic, fuel pricing, weather and news feeds

IN-CAR ENTERTAINMENT AND COMMUNICATIONS

2 x USB connection, USB charging socket (compatible products only)

COMFORT AND CONVENIENCE

Climate control - 3Zone electronic air conditioning with automatic air recirculation. Independent temperature control, air intensity and settings for driver, front passenger and rear seat passengers

Electrically heated and foldable door mirrors, door mirror puddle lights and reverse activated kerb-view adjustment on passenger's door mirror

DRIVER'S ASSISTANCE

Adaptive Cruise Control (ACC), including Front Assist, radar sensor controlled distance monitoring system and City emergency braking system

Cruise control and speed limiter

Driver Alert system, fatigue detection

High Beam Assist (not SEL or R-Line)

Multifunction colour display

Parking sensors, front and rear - ultrasonic, audible with audio volume reduction when activated and optical parking display via vehicle's infotainment system

ADDITIONAL ITEMS OF STANDARD EQUIPMENT: SEL (OVER SE)

4MOTION – 4 WHEEL DRIVE MODELS

Driver profile selection – choice of four settings: Eco, Comfort, Normal and Sport driving modes (2.0 BiTDI 240 PS DSG only)

WHEELS AND SUSPENSION

Alloy wheels, four 7J x 19" 'Victoria' with 235/50 R19 mobility self-sealing tyres and anti-theft wheel bolts

Dynamic Chassis Control (DCC), variable suspension settings – choice of three settings: Sport, Comfort and Normal (2.0 BiTDI 240 PS DSG only)

Tyre mobility kit in lieu of steel space saver spare wheel (2.0 BiTDI 240 PS DSG only)

EXTERIOR

'Cherry red' LED rear tail lights

Chrome effect trapezoid dummy exhaust tailpipe surrounds, left and right (2.0 BiTDI 240 PS only)

Dynamic light Assist

LED headlights with LED daytime running lights, 14 separate LEDs which perform the indicator function and dynamic curve lighting

Silver front underbody protection and rear diffuser

INTERIOR

Dark Grey decorative inserts in dash and door panels

'Piano Black' decorative inserts in centre console

Reading lights, front and rear x 2 incorporating LED technology

Seating

- Upholstery – 'Lounge' cloth with Art Velours microfleece
- Front sport seats with 14-way adjustable driver's ergoComfort seat including cushion tilt adjustment, backrest and thigh support, with electric adjustment for lumbar support and massage function – in lieu of driver's under seat drawer (not R-Line)
- Heated front seats

SAFETY AND SECURITY

Airbags

- Driver's and front passenger's knee airbag

COMFORT AND CONVENIENCE

Ambient lighting in front footwell, door sill protectors, light strips below trim in front doors and dashboard

Heated windscreen washer jets

Panoramic sunroof with LED ambient lighting

IN-CAR ENTERTAINMENT AND COMMUNICATIONS

Discover Navigation infotainment system (in addition to Composition Media infotainment system)

- 8.0" colour touch-screen
- Branded points of interest
- Dynamic navigation based on TMC+
- Preloaded European navigation data
- Speed Limit Display¹
- Three route options (Fast, Short, Eco)
- Volkswagen Media Control² – allows remote control of the infotainment system via smartphone or tablet
- 2D/3D map view



CAR-NET

Car-Net 'Guide and Inform'³ – 3-year subscription

- Providing online access to a range of useful information such as traffic, fuel pricing, weather and news feeds

DRIVER'S ASSISTANCE

Active Info Display, 12.3" high resolution TFT dash display screen with customisable menus and information⁴

- 1 Speed Limit Display only reflects national speed limits and does not show temporary speed limit restrictions, or where permanent changes to speed limits are made in-between map updates.
- 2 Only operable in conjunction with compatible tablets and smartphones including iPhone 5 and above. Please see www.volkswagen.co.uk to check compatibility.
- 3 Car-Net 'Guide and Inform' services are accessed via a compatible mobile device. Please see www.volkswagen.co.uk for more information. The use of 'Guide and Inform' services entails exchanging large volumes of data. As such, we strongly recommend that you sign-up for a flat rate data plan with your mobile network provider. After the initial 3-year Car-Net contract, an annual subscription is chargeable for the continuation of 'Guide and Inform' services.
- 4 Please note: When the navigation map is displayed in the Active Info Display in conjunction with the Discover Navigation infotainment system, the navigation map cannot be displayed on the Discover Navigation's 8.0" touch-screen.

The specifications listed are for information purposes only as our products are continually updated and changes may be made to the specifications at any time. If you require any specific feature, please consult your authorised Volkswagen retailer who is regularly updated with any change in specification. Specifications are subject to change without notice.

ADDITIONAL ITEMS OF STANDARD EQUIPMENT: R-LINE (OVER SEL)

WHEELS AND SUSPENSION

Alloy wheels, four 8½J x 20" 'Suzuka' with 255/40 R20 mobility self-sealing tyres and anti-theft wheel bolts

Sports suspension (not 2.0 BiTDI 240 PS DSG)

EXTERIOR

Body-coloured roof spoiler, rear

'Piano Black' front air intake and rear diffuser

'R-Line' styling pack – 'R-Line' design front and rear bumpers, black wheel arch extensions, body-coloured side skirts with chrome trim

Unique 'R-Line' badging



INTERIOR

Aluminium-look decorative inserts in dash and door panels

Black rooflining

Leather trimmed three-spoke multifunction steering wheel with aluminium inserts and 'R-Line' logo. Including paddle shift (auto DSG only)

Seating

- Upholstery – 'Race' cloth with 'San Remo' microfibre
- Front seats with 'R-Line' logo on rear seat backrest

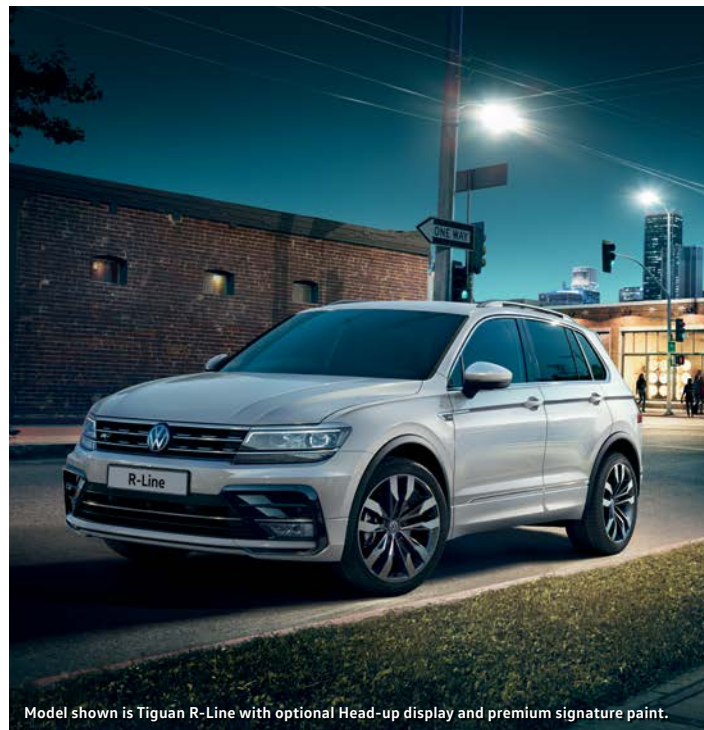
Stainless steel pedals – clutch, brake and accelerator

Unique 'R-Line' door sill protectors

DRIVER'S ASSISTANCE

Driver profile selection – choice of three settings: Eco, Normal and Sport driving modes

Progressive steering



Model shown is Tiguan R-Line with optional Head-up display and premium signature paint.

The specifications listed are for information purposes only as our products are continually updated and changes may be made to the specifications at any time. If you require any specific feature, please consult your authorised Volkswagen retailer who is regularly updated with any change in specification. Specifications are subject to change without notice. Models shown feature optional metallic paint.

FACTORY-FITTED OPTIONS

At Volkswagen, we work towards making sure that our cars are as close to how you want them as possible, and we understand that every detail needs to be right for you and your needs.

Introducing our exceptional range of factory-fitted options which allow you to express your individuality, help with the practical things in life, and add a touch of luxury at the same time. Whether you're looking for things to help you relax and help take the stress out of driving, feel protected, or simply look fantastic, just take your pick.

From voice activation to a panoramic sunroof, from LED headlights to a towbar, you'll find everything you need on the following pages to make your Tiguan **your** Tiguan, and perfect in every detail.

Factory-fitted option prices are the manufacturer's Recommended Retail Prices (RRP), inclusive of 20% VAT, and are charged in addition to recommended 'On the road' retail price paid for the vehicle. Models shown feature optional metallic paint.

EFFECTIVE FROM 26 APRIL 2018.



ALL TERRAIN AND EXTERIOR PROTECTION

'Outdoor' pack

All terrain look pack. Includes 24° angle of approach and departure with unique off-road front bumper, off-road chrome door sill protectors and additional front underbody protection.
Only in conjunction with 4MOTION models

S	SE	SE Navigation	SEL	R-Line	Basic RRP £ Excluding VAT	Total RRP £ Including VAT
-	○	○	○	-	300.00	360.00

WHEELS AND SUSPENSION

17" 'Tulsa'	Four 7J x 17" 'Tulsa' with 215/65 R17 low rolling resistance tyres and anti-theft wheel bolts	○	-	-	-	-	225.00	270.00
18" 'Patagonia'	Four 7J x 18" 'Patagonia' with 235/55 R18 mobility self-sealing tyres and anti-theft wheel bolts	○	●	●	-	-	450.00	540.00
18" 'Kingston'	Four 7J x 18" 'Kingston' with 235/55 R18 mobility self-sealing tyres and anti-theft wheel bolts	○	-	-	-	-	320.83	385.00
	Four 7J x 18" 'Kingston' with 235/55 R18 mobility self-sealing tyres and anti-theft wheel bolts	-	○	○	-	-	125.00	150.00
20" 'Miramar' grey metallic	Four 8J x 20" 'Miramar' grey metallic with 235/45 R20 mobility self-sealing tyres and anti-theft wheel bolts	-	-	-	○ ¹	-	687.50	825.00
Dynamic Chassis Control (DCC)	Variable suspension settings. Choice of three settings: Sport, Comfort and Normal. <i>Not in conjunction with sports suspension</i>	-	○	○	○ ²	○ ²	675.00	810.00
Sports suspension	Lowered by approx. 15mm. <i>Not in conjunction with Dynamic Chassis Control (DCC)</i>	○	○	○	○	● ²	137.50	165.00

1 Must be ordered in conjunction with Dynamic Chassis Control (DCC) or sports suspension. 2 Dynamic Chassis Control (DCC) is standard on 2.0 litre BiTDI 240 PS DSG models.

Please note, choosing optional alloy wheels does not affect CO₂ emissions on Tiguan models. Choosing larger alloy wheels than standard, as an option, may result in increased fuel consumption. This is due to the fact that larger wheels have both more aerodynamic drag and more mechanical drag, resulting in increased rolling resistance and increased wind resistance.

PAINT

Non-Metallic

Urano Grey	○	○	○	○	-	No cost option
Pure White	○	○	○	○	-	233.33 280.00
Pure White	-	-	-	-	○	No cost option

Metallic and Pearl Effect

Titanium Beige ¹ , Ruby Red, Reflex Silver, Caribbean Blue ¹ , Tungsten Silver, Atlantic Blue, Indium Grey, Deep Black	○	○	○	○ ¹	-	475.00 570.00
Titanium Beige ¹ , Ruby Red, Tungsten Silver, Atlantic Blue, Indium Grey, Deep Black	-	-	-	-	○ ¹	475.00 570.00

Premium Signature

Oryx White, Crimson Red	○	○	○	○ ¹	-	833.33 1,000.00
Oryx White	-	-	-	-	○	833.33 1,000.00

Please refer to Paint and Combinations pages in the current brochure, or visit volkswagen.co.uk for full availability of paint colours. 1 Not in conjunction with 2.0 litre BiTDI 240 PS DSG models.

● Standard equipment ○ Optional equipment - Not available. Factory-fitted options are subject to availability and extended delivery.

EXTERIOR

		S	SE	SE Navigation	SEL	R-Line	Basic RRP £ Excluding VAT	Total RRP £ Including VAT
Front fog lights	With static cornering function	○	●	●	●	●	216.67	260.00
Headlight washers		○	○	○	○	○	145.83	175.00
LED headlights with Dynamic Light Assist	All-LED headlights with reflector technology. Including separate LED daytime running lights which also perform the indicator function. Dynamic Light Assist. Automatic sensors detect other road users and mask part of the main beam headlights appropriately. If dazzling road users cannot be prevented, light distribution is automatically set to dipped beam. Front fog lights with static cornering function. With dynamic curve lighting. <i>In lieu of High Beam Assist</i>	—	○	○	●	●	1,145.83	1,375.00
LED rear tail lights	3D effect 'Cherry red' LED rear tail lights	—	○	○	●	●	325.00	390.00
Rear tinted glass	Rear tinted glass from B-pillar backwards, approx. 65% tinted	○	●	●	●	●	187.50	225.00
Towbar – swivelling	Swivelling towbar with electric release. With 13-pin connection and 12 electrified poles providing vehicle lighting plus additional power supply for caravan auxiliary battery charger, internal trailer lighting and fridge. <i>Maximum towing weight 2.5 tons¹ depending on engine</i>	○	○	○	○	○	608.33	730.00

¹ Maximum towing weight is dependent on vehicle specific equipment. The exact towing weights of individually configured vehicles, if required, must be obtained from the manufacturer before the purchase order is completed.

INTERIOR

Driver's ergoComfort seat with 14-way adjustment	Front seats with driver's 14-way adjustable ergoComfort seat (in lieu of driver's under seat drawer) including cushion tilt adjustment, backrest and thigh support, with electric adjustment for lumbar support and massage function. <i>Only available with black seat upholstery. Not in conjunction with 'Vienna' leather upholstery</i>	—	○	○	●	—	466.67	560.00
Net partition		○	○	○	○	○	179.17	215.00
Steering wheel – multifunction leather trimmed	Three-spoke steering wheel including leather trimmed gear knob	○	●	●	●	●	225.00	270.00
	Including paddle shift for DSG gearbox. <i>Only in conjunction with DSG gearbox</i>	○	●	●	●	●	270.83	325.00
Steering wheel – heated multifunction leather trimmed	Three-spoke steering wheel including leather trimmed gear knob	○ ¹	—	—	—	—	316.67	380.00
		—	○ ¹	○ ¹	○	—	91.67	110.00
	Including paddle shift for DSG gearbox. <i>Only in conjunction with DSG gearbox</i>	○	—	—	—	—	362.50	435.00
		—	○	○	○	—	91.67	110.00

¹ Must be ordered in conjunction with Winter pack.

● Standard equipment ○ Optional equipment — Not available. Factory-fitted options are subject to availability and extended delivery.

INTERIOR (CONTINUED)

		S	SE	SE Navigation	SEL	R-Line	Basic RRP £ Excluding VAT	Total RRP £ Including VAT
Storage pack	Storage compartment in roof console with additional storage capacity, accessible from front and rear seats	○	○	○	-	-	104.17	125.00
Upholstery – 'Vienna' leather²	'Vienna' leather upholstery including heated front seats. Driver's seat with electric 12-way adjustment (in lieu of driver's under seat drawer) and electrically adjustable lumbar support. Passenger's seat with manual lumbar support	-	○	-	-	-	1,487.50	1,785.00
	'Vienna' leather upholstery including heated front seats. Driver's seat with electric 12-way adjustment (in lieu of driver's under seat drawer), memory function and electrically adjustable lumbar support. Passenger's seat with manual lumbar support	-	-	○	○	-	1,487.50 1,254.17	1,785.00 1,505.00
Upholstery – 'Vienna' leather² sports seats	'Vienna' leather upholstery with embossed 'R' logo on head restraints including heated front seats. Driver's seat with electric 12-way adjustment (in lieu of driver's under seat drawer), memory function and electrically adjustable lumbar support. Passenger's seat with manual lumbar support	-	-	-	-	○	1,250.00	1,500.00
Heated outer rear seats	Including heated windscreen washer jets. <i>Only in conjunction with 'Vienna' leather upholstery</i>	-	○	○	○	○	179.17	215.00

1. Must be ordered in conjunction with Winter pack. 2. Some parts of leather interior will contain artificial leather.

● Standard equipment ○ Optional equipment - Not available. Factory-fitted options are subject to availability and extended delivery.

IN-CAR ENTERTAINMENT AND COMMUNICATIONS

	S	SE	SE Navigation	SEL	R-Line	Basic RRP £ Excluding VAT	Total RRP £ Including VAT
Car-Net 'App-Connect'	<p>Combined functionality of Apple 'CarPlay', Google 'Android Auto' and 'MirrorLink'™ allowing 'mirroring' of smartphone display on the infotainment touch-screen via USB connection. Display and operation of certified apps including audio and voice control (if supported by the app). Usage of certified apps only while driving. <i>Only operable in conjunction with compatible smartphones including iPhone 5 and above. Please see www.volkswagen.co.uk to check smartphone compatibility</i></p>					137.50	165.00
Car-Net 'Security & Service'	<p>Provides continuous interaction between the driver, vehicle and Volkswagen, via integrated SIM-card connectivity. Driver and vehicle integration with Volkswagen call centre or server for: 'eCall' – Emergency call service for SOS calls to emergency response incl. Automatic accident notification, Car breakdown, Vehicle health report and Service schedule – 10-year subscription. Driver and vehicle integration via Car-Net Portal or Car-Net app for: Driving data, Doors and lights, Area alert, Speed alert, Horn and hazard lights, Parking position and Online anti-theft alarm – 3-year subscription</p>					283.33	340.00
Discover Navigation touch-screen navigation/infotainment system with Car-Net 'Guide and Inform'¹	<p>8.0" colour touch-screen control system for navigation, CD and radio functions and Volkswagen Media Control, allowing remote control of the infotainment system via a smartphone or tablet. Preloaded European navigation data, 2D/3D map view, three calculated routes (Fast, Short, Eco), dynamic navigation based on TMC+, branded points of interest and Speed Limit Display². 3-years Car-Net 'Guide and Inform' access providing online access to a range of useful information such as traffic, fuel pricing, weather and news feeds. <i>Includes online navigation software updates, enabling you to download the latest map data. Please contact your authorised Volkswagen retailer for full details</i></p>					612.50	735.00
Discover Navigation Pro touch-screen navigation/DVD infotainment system with integrated voice activation, 'Gesture Control', Car-Net 'Guide and Inform Plus'¹ and Car-Net 'App-Connect'	<p>Voice activated control system – responds to spoken voice commands for navigation and telephone functions. 9.2" colour touch-screen control system for navigation, DVD, CD and radio functions and Volkswagen Media Control, allowing remote control of the infotainment system via a smartphone or tablet. 64 GB SSD hard drive. Preloaded European navigation data, 3D map view, three calculated routes (Fast, Short, Eco), dynamic navigation based on TMC+, branded points of interest, Speed Limit Display², photo display from JPEG and PNG files and SD card reader x 2. 'Gesture Control' enables convenient operation of menu functions via a simple sideways gesture, easily select radio stations, songs or photos with a single hand movement. 3-years Car-Net 'Guide and Inform Plus' access providing online access to a range of useful information such as traffic, fuel pricing, weather and news feeds. <i>Includes online navigation software updates, enabling you to download the latest map data. Please contact your authorised Volkswagen retailer for full details</i></p>					1,158.33	1,390.00
'Dynaudio Excite' soundpack	<p>Including 8 channel digital amplifier, Dolby Pro Logic surround sound, Digital Signal Processor (DSP), subwoofer, 400 watt output and 8 speakers</p>					466.67	560.00
Voice activation	<p>Spoken voice commands for telephone and navigation functions (when fitted). <i>Not in conjunction with Discover Navigation Pro touch-screen navigation/DVD infotainment system</i></p>					154.17	185.00

1 Car-Net 'Guide and Inform' services are accessed via a compatible mobile device. Please see www.volkswagen.co.uk for more information. The use of 'Guide and Inform' services entails exchanging large volumes of data. As such, we strongly recommend that you sign-up for a flat rate data plan with your mobile network provider. After the initial 3-year Car-Net contract, an annual subscription is chargeable for the continuation of Car-Net 'Guide and Inform' services. 2 Speed Limit Display only reflects national speed limits and does not show temporary speed limit restrictions, or where permanent changes to speed limits are made in-between map updates. 3 Must be ordered in conjunction with ambient lighting pack.

SAFETY AND SECURITY

		S	SE	SE Navigation	SEL	R-Line	Basic RRP £ Excluding VAT	Total RRP £ Including VAT
PreCrash preventive occupant protection	Tensioning of the front seat belts, closing of electric windows, closing of optional panoramic sunroof and preconditioning of brake systems should a critical driving situations be detected	○	●	●	●	●	116.67	140.00
Tyre pressure monitoring system	Displays tyre pressure for each individual wheel in the multifunction display	○	○	○	○	○	108.33	130.00

COMFORT AND CONVENIENCE

Ambient lighting pack	Two lights in front footwell, door sill protectors, light strips below trim in front doors, dashboard and LED reading lights front and rear x 2	-	○	○	●	●	220.83	265.00
Climate control	3Zone electronic air conditioning with automatic air recirculation	○	●	●	●	●	525.00	630.00
Electric tailgate	Electrically operated opening and closing function, including electrically opening and manually closing tailgate cover	○	○	○	○	○	295.83	355.00
Electrically foldable door mirrors		○	●	●	●	●	137.50	165.00
Keyless entry	Including Start/Stop button on centre console	○	○	○	○	○	316.67	380.00
Keyless entry/keyless start and full electric tailgate operation	Remote keyless entry and start using key fob and electrically-operated tailgate opening and closing function, operated from driver's door	○	○	○	○	○	550.00	660.00
Panoramic sunroof	Electric, glass sliding/tilting including integrated roller blind and LED ambient lighting	○	○	○	●	●	920.83	1,105.00
Smoking pack	Front and rear ashtray with lighter in front	○	○	○	○	○	16.67	20.00
Winter pack	Heated front seats and heated windscreen washer jets ¹	○	○	○	●	●	233.33	280.00
	Heated front and outer rear seats and heated windscreen washer jets ¹	-	○	○	-	-	412.50	495.00
	Heated outer rear seats	-	-	-	○	○	179.17	215.00
230V socket in boot with luggage light		○	○	○	○	○	116.67	140.00

¹ Not in conjunction with 'Vienna' leather upholstery.

● Standard equipment ○ Optional equipment - Not available. Factory-fitted options are subject to availability and extended delivery.

DRIVER'S ASSISTANCE

		S	SE	SE Navigation	SEL	R-Line	Basic RRP £ Excluding VAT	Total RRP £ Including VAT
Active Info Display	12.3" high resolution TFT dash display screen with customisable menus and information. <i>In lieu of multifunction colour display. Please note: When the navigation map is displayed in the Active Info Display in conjunction with the Discover Navigation infotainment system, the navigation map cannot be displayed on the Discover Navigation's 8.0" touch-screen</i>	-	○	○	●	●	491.67	590.00
Area view with Park Assist	Front, rear and side cameras to provide 360° exterior view of vehicle displayed via vehicle's infotainment system. Sensor controlled steering aid to assist parallel or bay parking. <i>Not in conjunction with rear-view camera</i>	○ ¹	○	○	○	○	1,004.17 687.50	1,205.00 825.00
Cruise control with Driver Alert system	With speed limiter and Driver Alert system audible and visual fatigue detection system. Monitors driving behaviour and journey time to recommend when to take a break	○ ²	●	●	-	-	229.17	275.00
Emergency Assist	Driver intervention should sensors detect the driver is incapable of driving. Automatic hazard light activation while bringing the vehicle to a controlled stop within its lane. <i>Only in conjunction with DSG Gearbox</i>	-	○	○	○	○	333.33	400.00
Head-up Display³	Driving information including current speed is projected onto a retractable screen within the driver's field of vision helping to reduce the time that the driver's eyes are averted from the road	-	○	○	○	○	416.67	500.00
High Beam Assist	Automatic sensing for switching between dipped and main beam	○	●	●	-	-	125.00	150.00
Parking sensors, front and rear	Ultrasonic and audible parking sensors, with audio volume reduction when activated and optical parking display via vehicle's infotainment system	○	●	●	●	●	316.67	380.00
Park Assist and parking sensors, front and rear	Sensor controlled steering aid to assist parallel or bay parking. Ultrasonic and audible parking sensors, with audio volume reduction when activated and optical parking display via vehicle's infotainment system	○	-	-	-	-	425.00	510.00
Park Assist with rear-view camera	Displayed via vehicle's infotainment system display. Sensor controlled steering aid to assist parallel or bay parking. <i>Not in conjunction with Area view</i>	○	-	○	-	-	775.00 458.33	930.00 550.00
Progressive steering	<i>Not available with 1.4 TSI 125 PS or 2.0 TDI 115 PS engines</i>	○	○	○	○	●	166.67	200.00
Side scan	Radar sensor controlled warning system for lane changing and blind spots with visual warning via light in door mirror housing. <i>Includes Traffic Sign Recognition when ordered in conjunction with Discover Navigation and Discover Navigation Pro navigation/infotainment systems. Not in conjunction with Emergency Assist</i>	-	○	○	○	○	329.17	395.00
Trailer Assist including Park Assist and rear-view camera⁴	Controls reverse guidance of vehicle and trailer. Optical display visualises actual and possible steering angles in the instrument cluster with reverse steering direction controlled via joystick (mirror adjustment switch). Sensor controlled steering aid to assist parallel or bay parking	-	○	○	○	○	675.00	810.00

1 Must be ordered in conjunction with electrically foldable door mirrors. 2 Must be ordered in conjunction with multifunction leather trimmed steering wheel.

3 Please note, use of polarised lenses may impair the visibility of the Head-up Display. 4 Must be ordered in conjunction with towbar – swivelling.

● Standard equipment ○ Optional equipment - Not available. Factory-fitted options are subject to availability and extended delivery.

ACCESSORIES

YOUR VOLKSWAGEN YOUR WAY

	Part number	Total RRP £ Including VAT	Total fitted RRP £ Including VAT		Part number	Total RRP £ Including VAT	Total fitted RRP £ Including VAT
PROTECTION AND CAR CARE							
Mudflaps – front (not for R-Line)	5NA 075 101	-	89.00	Flexible boot liner – variable loading floor	5NA 061 160	42.50	-
Mudflaps – rear (not for R-Line)	5NA 075 111	-	89.00	Boot mat – variable loading floor	5NA 061 161	64.00	-
Rubber floor mats – front – black	5NC 061 502 82V	45.00	-	Boot tray – variable loading floor	5NA 061 162	147.50	-
Rubber floor mats – rear – black	5NA 061 512 82V	32.00	-	Summer car care kit	000 096 355 D	25.00	-
Basic carpet mats – black – front and rear	5NC 061 404 WGK	62.50	-	Winter car care kit	000 096 352 L	20.00	-
Luxury carpet mats – black – front and rear	5NC 061 270 WGK	75.00	-				
TRAVEL AND TRANSPORT							
Load bars	5QF 071 151	184.50	-	Towbar – fixed, including electrical installation kit	5NA 092 103	-	740.50
Partition grille (dog guard)	5NA 017 221	-	219.00	Towbar – detachable, including electrical installation kit	5NA 092 160 A	-	1,052.00
Volkswagen child seat G1 ISOFIX DUO Plus	5G0 019 909 A	311.00	-	Compact III towbar mounted bicycle carrier	3C2 071 105 A	515.00	-
Bicycle holder	000 071 128 F	95.00	-	Luggage net	5N0 065 111	59.00	-
Volkswagen roof box – 340 litres – black	000 071 200	230.00	-	Comfort Ski and snowboard holder – 6 skis or 4 snowboards	1T0 071 129	185.50	-
STYLING AND TECHNOLOGY							
Door sill trims – aluminium – 2 pieces	5NA 071 303	-	99.50	Door sill trims – black/silver – 4 pieces	5NA 071 310 ZMD	-	118.00
Rear chrome strip for the tailgate – steel look	5NA 071 360	-	75.00	Door wind deflectors – smoke grey – rear	5NA 072 194 HU3	-	56.50
Pedal cap set – for manual gearboxes	5G2 064 200	-	175.00	'App-Connect' (activation document)	5G0 054 830 A	-	224.00
Pedal cap set – for automatic (DSG) gearboxes	5G2 064 205	-	175.00	Vodafone Protect and Connect 6 – Tracker including 1 year subscription	ZGB 000 054 202	-	485.00
Running boards	5NA 071 691	-	599.00				

Accessory prices are the manufacturer's Recommended Retail Prices (RRP), shown exclusive and inclusive of fitting where applicable, inclusive of appropriate VAT, and are charged in addition to recommended 'On the road' retail price paid for the vehicle. For full details, please contact your authorised Volkswagen retailer.

VOLKSWAGEN WARRANTY AND SERVICE PLAN

ADDITIONAL WAYS TO KEEP YOUR PERFECT CAR, PERFECT... FOR LONGER

Exclusions and terms apply, please see page 28 for more details. For pricing and further details of Volkswagen Warranties and Service Plans, please consult your authorised Volkswagen retailer or visit www.volkswagen.co.uk

THE VOLKSWAGEN EXTENDED WARRANTY

If you order the Volkswagen Extended Warranty as an option when buying your new Tiguan, then you get the 100% Volkswagen Warranty and you can continue to enjoy comprehensive Volkswagen protection against many unforeseeable repair costs. Designed to your needs, you can purchase an extra one or two year's warranty up to a maximum of five years or 90,000 miles.

CHOOSE ONE OF THE FOLLOWING TWO OPTIONS:

	Basic Recommended Retail	VAT	Total Recommended Retail
Four years	329.17	65.83	395.00
Five years	783.33	156.67	940.00

This covers up to four years or 75,000 miles, whichever comes soonest. The cover includes a two-year unlimited mileage warranty and up to 75,000 miles in the third and fourth years.

This covers up to five years or 90,000 miles, whichever comes soonest. The cover includes a two-year unlimited mileage warranty and up to 90,000 miles in the third, fourth and fifth years.

For further details please visit www.volkswagen.co.uk or speak to your authorised Volkswagen retailer.

VOLKSWAGEN SERVICE PLAN – RETAIL SALES ONLY

We offer Volkswagen Service Plans to cover all new models for their first two consecutive services in line with the Fixed Service schedule required on the vehicle. Your car will be in the hands of Volkswagen trained technicians who use specialist Volkswagen tools, technology and Volkswagen original parts, and all parts and labour are guaranteed for two years. What's more, the Volkswagen Service Plan will remain with the vehicle should you decide to sell your car.

Volkswagen Service Plan

For vehicles under 1 year old set to the Fixed Service regime that has not had its first service, comprising first two manufacturer's scheduled services:

- 'Oil service' including oil filter change
- 'Oil service' including oil filter change and 'Inspection service' plus a pollen filter replacement (if required)

Excludes electric vehicles. Service plan covers first two consecutive services, limited to 1x 'Oil service' and 1x 'Oil and Inspection service'. T&Cs apply: All vehicles must be set to the Fixed Service regime by the retailer. Maximum age of car is 12 months (Service plan must be taken out before first service is due). Additional work, including wear and tear is excluded. Servicing must be carried out in line with the requirement of the Service Schedule. All work must be carried out by an Authorised Volkswagen Repairer. Offers may be varied or withdrawn at any time. Plan validity is dependent on required payments received. Administered by Volkswagen Financial Services. Retail sales only. For pricing and further details, please consult your authorised Volkswagen retailer or visit www.volkswagen.co.uk

Solutions PCP

THE MAGIC OF MORE CAR FOR YOUR MONEY



So what's the big deal?

Solutions from Volkswagen Financial Services offers you flexible competitive rates and a finance plan that's completely built around you. Because it allows you to leave paying for some of the car's value to the very end, you can lower your monthly repayments... allowing you to get more car for your money. At the end of the agreement you also get three options to suit you. Solutions. Not smoke and mirrors, just brilliant, flexible finance. (There, the secret's out!)





The nitty-gritty

1. Choose a repayment period and annual mileage.
2. Pay your deposit, which can be made up of cash or a part-exchange.
3. Defer an agreed amount until the end of your agreement.

Setting the deposit and repayment term helps create the right combination for a monthly payment budget.

In the end... the choice is yours

1. Part-exchange your existing car for a new Volkswagen on a Solutions (PCP) contract (subject to status).
2. Pay the option to purchase fee and the optional final payment and keep your Volkswagen.
3. Hand the car back (subject to terms and conditions).

Cost of your vehicle

Deposit
As little as one monthly payment

Monthly payments
Spread across 18 to 48 months

Optional final payment
You have three choices at the end of your agreement



Test drive some numbers with our finance calculator by scanning this QR code with your mobile device.

For more information and things to consider when taking out finance, please visit vwfinance.co.uk

Model shown is Tiguan R-Line.

An offer of finance depends on certain conditions. Finance subject to status. 18s and over. Terms and conditions apply. Volkswagen Financial Services.



VED AND ADDITIONAL 'ON THE ROAD' COSTS – 2018

The Autumn Budget 2017 announced that new diesel vehicles registered after 1 April 2018, that do not meet the RDE2 standard, will be charged a supplement on their 'First year rate' to the effect of moving up by one VED (Vehicle Excise Duty) band. VED rates for vehicles registered before 1 April 2018 will not be affected by the new VED rate changes.

'FIRST YEAR RATE' VED – BASED ON CO₂ EMISSIONS

Petrol – 'First year rate' VED

CO ₂ emissions (g/km)	Petrol VED £	Petrol total 'On the road' costs £
0	0.00	655.00
1-50	10.00	665.00
51-75	25.00	680.00
76-90	105.00	760.00
91-100	125.00	780.00
101-110	145.00	800.00
111-130	165.00	820.00
131-150	205.00	860.00
151-170	515.00	1,170.00
171-190	830.00	1,485.00
191-225	1,240.00	1,895.00
226-255	1,760.00	2,415.00
Over 255	2,070.00	2,725.00

Diesel – 'First year rate' VED

CO ₂ emissions (g/km)	Diesel VED £	Diesel total 'On the road' costs £
0	0.00	655.00
1-50	25.00	680.00
51-75	105.00	760.00
76-90	125.00	780.00
91-100	145.00	800.00
101-110	165.00	820.00
111-130	205.00	860.00
131-150	515.00	1,170.00
151-170	830.00	1,485.00
171-190	1,240.00	1,895.00
191-225	1,760.00	2,415.00
226-255	2,070.00	2,725.00
Over 255	2,070.00	2,725.00

Alternative fuel – 'First year rate' VED

CO ₂ emissions (g/km)	Alternative fuel VED £	Alternative fuel total 'On the road' costs £
0	0.00	655.00
1-50	0.00	655.00
51-75	15.00	670.00
76-90	95.00	750.00
91-100	115.00	770.00
101-110	135.00	790.00
111-130	155.00	810.00
131-150	195.00	850.00
151-170	505.00	1,160.00
171-190	820.00	1,475.00
191-225	1,230.00	1,885.00
226-255	1,750.00	2,405.00
Over 255	2,060.00	2,715.00

ADDITIONAL 'OTR' COSTS 'STANDARD RATE' VED

Additional 'On the road' costs

Delivery to retailer	480.00
Number plates	20.00
VAT	100.00
Vehicle first registration fee	55.00
Total	655.00

The total 'On the road' costs above for petrol, diesel, electric and alternative fuel vehicles include the applicable 'First year rate' VED charge plus the 'On the road' costs as detailed above:

'Standard rate' VED based on fuel type

Fuel type	CO ₂ emissions (g/km)	'Standard rate' VED £
Electric/Other	0	0.00
Petrol/Diesel	1 - Over 255	140.00
Alternative	1 - Over 255	130.00

After the 'First year rate', all vehicles with zero emissions will be exempt from the 'Standard rate' of vehicle tax. All petrol and diesel vehicles will pay a standard rate of £140 a year, and alternative fuel vehicles will pay a standard rate of £130 a year.

'STANDARD RATE' – OVER £40,000 RRP

'Standard rate' VED for vehicles over £40,000 list price – five year annual rate

Fuel type	'Standard rate' VED £	Additional rate £	Total annual payment £
Electric	0.00	310.00	310.00
Petrol/Diesel	140.00	310.00	450.00
Alternative	130.00	310.00	440.00

Petrol or diesel vehicles with a list price over £40,000 at first registration pay £450 a year after the 'First year rate' for a period of five years. Alternative fuel vehicles over £40,000 at first registration – hybrids, bi-ethanol or LPG, pay £440 a year after the 'First year rate' for a period of five years. Electric or vehicles producing zero emissions over £40,000 at first registration pay £310 a year after the 'First year rate' for a period of five years. After five years, vehicles will revert to their 'Standard rate' tax depending on fuel type.

The way VED (Vehicle Excise Duty) vehicle tax is calculated will change for vehicles that are first registered with the DVLA on, or after, 1 April 2018. All new diesel vehicles registered after 1 April 2018 that do not meet the RDE2 standard will be charged a supplement on their 'First year rate' to the effect of moving up by one VED (Vehicle Excise Duty) band.

If a new vehicle is registered on or after 1 April 2018, after the 'First year rate' VED the majority of vehicles move to the 'Standard rate' of vehicle tax which is £140 a year.

The 'First year rate' will be based on the CO₂ emissions and the list price of the vehicle supplied by the Manufacturer or Retailer as applicable on the day before the vehicle is first registered and taxed.

After the 'First year rate', all vehicles with zero emissions will be exempt from the 'Standard rate' of vehicle tax. All petrol and diesel vehicles will pay a standard rate of £140 a year, and alternative fuel vehicles will pay a standard rate of £130 a year.

Petrol or diesel vehicles with a list price over £40,000 at first registration will pay £450 a year, after the first 'First year rate' vehicle tax, for a period of five years. This comprises the £140 'Standard rate' and £310 additional rate. After five years the vehicle tax will revert to the 'Standard rate' of £140 per year.

Alternative fuel vehicles - hybrids, bi-ethanol or LPG, with a list price over £40,000 at first registration will pay £440 a year after the 'First year rate' vehicle tax for a period of five years. This comprises the £130 'Standard rate' and £310 additional rate which reverts to £130 'Standard rate' after five years.

Vehicles with a list price exceeding £40,000 with zero emissions (including electric) will pay the additional rate of £310 a year for a further five year period, after the 'First year rate' tax. After the five year period these vehicles will pay zero VED tax.

There is no provision for 6 month's 'First year rate' VED.

EFFECTIVE FROM 26 APRIL 2018.

ENVIRONMENTAL INFORMATION

	Output, ps	CO ₂ emission, g/km ¹	Trim level(s)	Urban ¹ mpg/ltr per 100km	Extra-urban ¹ mpg/ltr per 100km	Combined ¹ mpg/ltr per 100km
PETROL ENGINES						
1.4 ltr TSI 2WD	125	135	S	38.2/7.4	54.3/5.2	47.1/6.0
1.4 ltr TSI 2WD	125	137	SE, SE Navigation	37.7/7.5	53.3/5.3	46.3/6.1
1.4 ltr TSI ACT 2WD [†]	150	130	S	40.9/6.9	56.5/5.0	49.6/5.7
1.4 ltr TSI ACT 2WD [†]	150	132	SE, SE Navigation	40.4/7.0	55.4/5.1	48.7/5.8
1.4 ltr TSI ACT 2WD DSG [†]	150	140	SE Navigation, SEL, R-Line	37.7/7.5	51.4/5.5	46.3/6.1
1.4 ltr TSI ACT 4MOTION [†]	150	148	SE Navigation	34.4/8.3	47.1/6.0	40.9/6.9
1.4 ltr TSI ACT 4MOTION DSG [†]	150 [†]	155	SE Navigation [†]	33.2/8.5	46.8/6.3	39.8/7.1
2.0 ltr TSI 4MOTION [†]	180	165	SEL, R-Line	31.7/8.9	47.1/6.0	39.8/7.1
2.0 ltr TSI DSG 4MOTION (7-spd)	180	170	SEL, R-Line	31.0/9.1	44.1/6.4	38.2/7.4

DIESEL ENGINES

2.0 ltr TDI SCR 2WD	115	123	S	49.6/5.7	67.3/4.2	60.1/4.7
2.0 ltr TDI SCR 2WD	150	123	S	49.6/5.7	67.3/4.2	60.1/4.7
2.0 ltr TDI SCR 2WD	150	125	SE, SE Navigation, SEL, R-Line	48.7/5.8	67.3/4.2	58.9/4.8
2.0 ltr TDI SCR DSG 2WD (7-spd)	150	129	SE, SE Navigation, SEL, R-Line	49.6/5.7	62.8/4.5	57.6/4.9
2.0 ltr TDI SCR 4MOTION	150	139	S	44.8/6.3	60.1/4.7	53.3/5.3
2.0 ltr TDI SCR 4MOTION	150	141	SE, SE Navigation, SEL, R-Line	44.1/6.4	58.9/4.8	52.3/5.4
2.0 ltr TDI SCR DSG 4MOTION (7-spd)	150	147	S	42.2/6.7	56.5/5.0	50.4/5.6
2.0 ltr TDI SCR DSG 4MOTION (7-spd)	150	149	SE, SE Navigation, SEL, R-Line	41.5/6.8	55.4/5.1	49.6/5.7
2.0 ltr TDI SCR DSG 4MOTION (7-spd)	190	149	SE, SE Navigation, SEL, R-Line	43.5/6.5	54.3/5.2	49.6/5.7
2.0 ltr BITDI SCR 4MOTION DSG (7-spd)	240	167	SEL, R-Line	38.2/7.4	48.7/5.8	44.1/6.4

1 Fuel consumption and CO₂ figures are obtained under standardised EU test conditions (Directive 93/116/EEC). This allows a direct comparison between different manufacturer models but may not represent the actual fuel consumption achieved in 'real world' driving conditions. More information is available on the Volkswagen website at www.volkswagen.co.uk and at www.dft.gov.uk/vca. CO₂ is the main greenhouse gas responsible for global warming. This information should be used for illustration purposes only. Choosing larger alloy wheels than standard may result in increased fuel consumption as well as higher CO₂ emissions and subsequently increased Vehicle Excise Duty (VED) band, and BIK rates paid for company car drivers will increase. In some instances, the 'On The Road' cost paid for the vehicle may increase as a result of the increased VED rate.

† Please note these models are only available from stock and are not available to factory order.

SCR (Selective Catalytic Reduction) requires AdBlue®, please see page 24 or visit www.volkswagen.co.uk/technology/adblue for more details.

Your Volkswagen car is fitted with an advanced emissions control system, which helps your vehicle meet the latest EURO 6 exhaust gas regulations.

How does the system work?

AdBlue®, a water/urea based additive, is stored in a tank (like diesel fuel), however, unlike fuel it is not injected into the engine, but directly into a specially modified part of the vehicle's exhaust. This begins a chemical reaction which removes the polluting oxides of nitrogen (NOx), converting them into harmless oxygen and nitrogen in a process known as Selective Catalytic Reduction, or SCR for short. SCR is only applicable to diesel engines and the more economically you drive, typically, the less AdBlue® you will use.

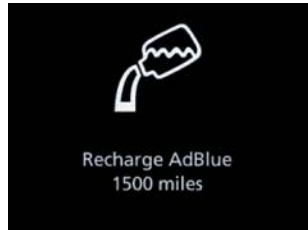
The size of the AdBlue® tank fitted to your car will vary depending on which Volkswagen model you have, therefore the interval between top-ups will vary. In addition, many factors such as mileage, journey type, driving style and environmental conditions can influence how much AdBlue® is consumed. A passenger car can consume approximately 1.5 litres of AdBlue® every 620 miles (1.0–1.5 litres for the Passat and Passat Estate). The chart below details the AdBlue® tank size and location.

Model (SCR derivatives only)	Tank size (Approximately)	AdBlue® tank filler location	Initial warning of low AdBlue® (2,400km/1,500 miles to go) can be expected to occur at:
Tiguan	13 litres	Next to fuel filler nozzle	3,000 to 4,000 miles or sooner*

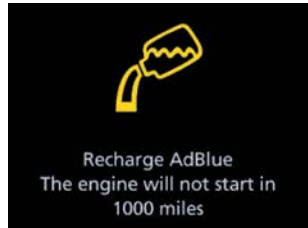
* Distances are approximate and the warning light may come on sooner depending on driving style, journey type, engine and vehicle load and environmental conditions.

How will I know if the system needs topping-up?

A series of warnings will be given via the driver information system, accompanied by advice/messages.



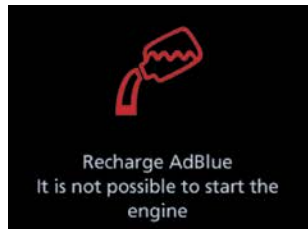
The first message is displayed when the remaining range is approximately 1,500 miles, and is repeated every 62 miles until the range reaches 1,000 miles, at which point the warning turns amber. This warning is repeated every 31 miles and is accompanied by an audible tone. If these warnings are not acted upon, the warning turns red; once this happens the car will not restart once the ignition is turned off. This is not a fault, but a required feature of the system. If this stage is reached the system will need a full top-up before the car can be restarted. Further information is available in the vehicle handbook.



Why should I use a Volkswagen Authorised repairer for top-ups?

- AdBlue® top-ups at authorised repairers are extremely competitive and charged by the litre, so you only pay for what you need
- Authorised repairer staff are trained to handle AdBlue®
- AdBlue® tanks need special adaptors on fillers to ensure there are no spillages
- Volkswagen do not recommend keeping top-up bottles in cars

The top-up bottles supplied by Volkswagen have a capacity of 1.89 litres, and come complete with the adaptor nozzles that fit the Volkswagen AdBlue® tank. These are available from all Volkswagen Authorised repairers.



Important information

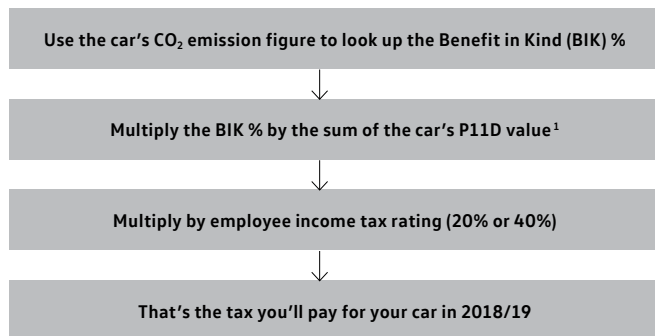
- AdBlue® is not a fuel additive. This is why there is a separate AdBlue® tank
- If you put AdBlue® in your fuel tank by mistake, please do not start the engine, but contact a retailer for help
- Put only AdBlue® in the AdBlue® tank; do not fill the AdBlue® tank with any other liquids
- Prevent anything from contaminating AdBlue®
- If small quantities of AdBlue® come into contact with the vehicle's paintwork, for example, wipe them off and if necessary rinse the area with water

AdBlue® warning lights.

COMPANY CAR TAXATION

CHART – 2018/19

HOW TO CALCULATE YOUR COMPANY CAR INCOME TAX LIABILITY – EFFECTIVE 6.4.2018



The government is retaining the diesel supplement in company car tax until 2021, when EU-wide testing procedures will ensure new diesel cars meet air quality standards even under strict 'real world' driving conditions. From 6 April 2018 drivers must add 4% (increased from 3% at Autumn Budget 2017) to their appropriate percentage if the car is propelled solely by diesel (up to a maximum of 37%).

From 2020/21, the BIK percentages for zero emission cars will reduce from 16% to 2%, whilst BEV/PHEV cars with CO₂ emissions between 1-50g/km will vary between 2% and 14%, depending on the electric range (miles).

For further details of company car tax, please consult your authorised Volkswagen retailer, or visit www.volkswagen.co.uk/fleet/company-tax

¹ P11D values given in this price list are based on standard specification models with no factory-fitted options or other accessories. If your car includes factory-fitted options or other accessories, you may need to adjust the P11D value to take this into account.

Emissions CO ₂ (g/km)	2018/19 Benefit in Kind (BIK)		2019/20 Benefit in Kind (BIK)		2020/21 Benefit in Kind (BIK)		
	Petrol/Electric	Diesel	Petrol/Electric	Diesel	Electric range miles	Petrol/Electric	Diesel
0 (EV)	13%		16%			2%	
1-50	13%		16%		130 or above	2%	
1-50	13%		16%		70-129	5%	
1-50	13%		16%		40-69	8%	
1-50	13%		16%		30-39	12%	
1-50	13%		16%		1-29	14%	
51-54	16%		19%			15%	
55-59	16%		19%			16%	
60-64	16%		19%			17%	
65-69	16%		19%			18%	
70-74	16%		19%			19%	
75	16%		19%			20%	
76-79	19%	23%	22%	26%		20%	24%
80-84	19%	23%	22%	26%		21%	25%
85-89	19%	23%	22%	26%		22%	26%
90-94	19%	23%	22%	26%		23%	27%
95-99	20%	24%	23%	27%		24%	28%
100-104	21%	25%	24%	28%		25%	29%
105-109	22%	26%	25%	29%		26%	30%
110-114	23%	27%	26%	30%		27%	31%
115-119	24%	28%	27%	31%		28%	32%
120-124	25%	29%	28%	32%		29%	33%
125-129	26%	30%	29%	33%		30%	34%
130-134	27%	31%	30%	34%		31%	35%
135-139	28%	32%	31%	35%		32%	36%
140-144	29%	33%	32%	36%		33%	37%
145-149	30%	34%	33%	37%		34%	37%
150-154	31%	35%	34%	37%		35%	37%
155-159	32%	36%	35%	37%		36%	37%
160-164	33%	37%	36%	37%		37%	37%
165-169	34%	37%	37%	37%		37%	37%
170-174	35%	37%	37%	37%		37%	37%
175-179	36%	37%	37%	37%		37%	37%
180+	37%	37%	37%	37%		37%	37%

Taxable percentage of P11D value (Diesel figures include the 4% diesel supplement)

EFFECTIVE FROM 26 APRIL 2018.

COMPANY CAR TAXATION COMPARISON – 2018/19

3-YEAR TAXATION COMPARISON GUIDE

TIGUAN			Output, PS	CO ₂ emission, g/km ¹	Basic Recommended Retail £	VAT £	Total Recommended Retail £	Tax year commencing	P11D Value £	BIK % ²	Annual cost at 20% tax rate £	Annual cost at 40% tax rate £
SE	2.0 ltr TDI SCR 2WD	6 speed manual	150	125	22,770.83	4,554.17	27,325.00	2018/19	27,925.00	30	1,675.50	3,351.00
								2019/20	27,925.00	33	1,843.05	3,686.10
								2020/21	27,925.00	34	1,898.90	3,797.80
R-LINE	2.0 ltr TSI 4MOTION	7 speed auto DSG	180	170	28,479.17	5,695.83	34,175.00	2018/19	34,775.00	35	2,434.25	4,868.50
								2019/20	34,775.00	37	2,573.35	5,146.70
								2020/21	34,775.00	37	2,573.35	5,146.70

1 Fuel consumption and CO₂ emissions are standard EU test figures for comparative purposes, and may not reflect 'real world' driving results. For full details, please see Environmental Information on page 23. CO₂ emissions shown refer to standard specification only. Choosing larger alloy wheels than standard, as an option, may result in increased fuel consumption as well as higher CO₂ emissions and subsequently increased BIK rates paid by company car drivers.

2 The BIK % figure quoted includes the 4% diesel supplement, which is effective as of 6.4.2018, where applicable. All examples are for manual derivatives unless otherwise stated.

THE VOLKSWAGEN SERVICE, FOR YOUR PEACE OF MIND

THE VOLKSWAGEN WARRANTY

Exclusions and terms and conditions apply to all warranties and plans listed. For pricing and further details of Volkswagen Warranties and Service Plans, please consult your authorised Volkswagen retailer or repairer, or visit www.volkswagen.co.uk

THREE-YEAR WARRANTY

All Volkswagen passenger cars come with a three-year/60,000 miles warranty, which protects your car against the failure of most technical and electrical components due to manufacturing defects. This comprises a two-year manufacturer's warranty with unlimited mileage plus a further one-year/60,000 miles (whichever is soonest) Retailer Warranty¹. Should the mileage exceed 60,000 miles within the first two years, the manufacturer's two-year warranty will still be valid. Full details of the three-year warranty are available from your authorised Volkswagen retailer or repairer.

BODY PROTECTION WARRANTY

The internal body sections and panels of the Tiguan are covered against rusting through from the inside for 12 years. Naturally, the vehicle must be cared for in compliance with the manufacturer's operating instructions. Please consult your authorised Volkswagen retailer or repairer for full warranty details.

THREE-YEAR PAINTWORK WARRANTY

This latest paintwork warranty, pioneered by Volkswagen, provides you with cover on a new car. Naturally, during the warranty period the car must be cared for in compliance with the manufacturer's operating instructions. Any paintwork defects, as a result of the manufacturing process, will be rectified without charge.

EXTENDED WARRANTY

If you order the Volkswagen Extended Warranty as an option when buying your new Tiguan then you get the 100% Volkswagen Warranty and you can continue to enjoy comprehensive Volkswagen protection against many unforeseeable repair costs. Designed to your needs, you can purchase an extra one or two year's warranty up to a maximum of five years or 90,000 miles.

SERVICE INTERVALS

Volkswagen is pleased to offer you a choice on how your Volkswagen is serviced. The appropriate selection is entirely dependent on how the car is likely to be driven and its general use. To help you identify which type of service would be most suitable, please refer to the following guide.

The Fixed Service is recommended for vehicles that will cover less than 10,000 miles in 12 months and if the vehicle is likely to be used in the following way:

- Predominantly urban driving, short journeys with frequent cold starts.
- Activities regularly producing high engine loading, e.g. frequent hill climbs, driving with vehicle fully loaded and towing.
- Uneconomical driving style using high rpms with heavy acceleration and heavy braking.

The service intervals for the Fixed Service are as follows:

- Oil change service – After 1 year or 10,000 miles (15,000km), whichever is soonest.
- Inspection service² – First after 2 years or 20,000 miles (30,000km), then every one year or 20,000 miles (30,000km), whichever is soonest.

SERVICE INTERVALS (CONTINUED)

The Flexible Service is recommended for vehicles with daily mileage of more than 25 miles where the vehicle is driven regularly mainly on longer distance journeys. The vehicle is driven mainly at a constant speed with minimum vehicle and engine loading, minimal towing and driven in an economical manner. With the Flexible Service the vehicle can cover anywhere between 10,000³ and a maximum of 20,000³ miles or 24 months (whichever is soonest) between oil changes.

The service intervals for the Flexible Service are as follows:

- Oil change service – According to flexible service interval display (after 2 years at the latest).
- Inspection service² – First after 2 years or 20,000 miles (30,000km), then every one year or 20,000 miles (30,000km), whichever is soonest.

The up! model is only available with the Fixed Service schedule. Please consult your authorised Volkswagen retailer or repairer for advice and full details.

VOLKSWAGEN INSURANCE⁴

We want you to start enjoying your new car from day one, and thanks to our 5 day complimentary Volkswagen Drive Away Insurance you can. Call 0345 300 6119 (lines are open Monday to Friday 8am-8pm and Saturday 9am-5pm). If eligible, we will also give you a quotation for our annual insurance, designed specifically for Volkswagen drivers.

VOLKSWAGEN ENSURANCE⁵

Get three years' Volkswagen Ensurance cover for free.

Another great benefit of being a Volkswagen driver. If your Volkswagen was damaged in an accident, wouldn't you want it fixed by a Volkswagen trained technician using only genuine Volkswagen parts? Ensurance is Volkswagen's accident and repair cover which does exactly that. It works alongside your main comprehensive motor insurance policy no matter who you are insured with, to make sure you get the quality repair and service you would want. If you're involved in an accident or your car is stolen, just one call to us and we'll look after your claim from start to finish ensuring your Volkswagen is restored to the highest standard.

Activate your cover and benefit from:

- A guarantee that your Volkswagen will be repaired by a Volkswagen approved repairer and Volkswagen trained technicians, using only genuine Volkswagen parts and paints.
- A dedicated Claims Manager who will manage your claim from start to finish, liaising with your insurer and the repairer so you don't have to.
- Help to recover any uninsured losses using our Legal Expenses Cover.
- Online claims tracking so you can keep up to date with the status of any claim.

Volkswagen Ensurance is free to all Volkswagen customers for three years and it only takes a minute to get cover.

To find out more and to activate your cover, visit www.volkswagen-ensurance.co.uk

VOLKSWAGEN FINANCE⁶

Volkswagen Finance specialises in providing funding solutions for Volkswagen drivers. Whether your Volkswagen is for private or business use, you can choose from a range of funding options.

- Solutions – a Personal Contract Plan
- Hire purchase
- Lease purchase
- Finance lease
- Contract hire

With all Volkswagen Finance products you can choose a fixed-cost maintenance plan to help you budget for your servicing and maintenance costs. No matter what finance product you choose, your local Volkswagen retailer will be able to provide you with a personalised quote that could meet your budget and vehicle needs.

VOLKSWAGEN ROADSIDE ASSISTANCE

Every new car is registered for Volkswagen Roadside Assistance for one year except the Touareg which is registered for three years. This provides vehicle roadside and home recovery in the unlikely event of a breakdown in the UK and Europe (subject to conditions). Volkswagen Roadside Assistance can also be purchased for subsequent years. For full details, please contact your authorised Volkswagen retailer.

Exclusions and terms and conditions apply. For pricing and further details of Volkswagen Roadside Assistance, please consult your authorised Volkswagen retailer, or visit www.volkswagen.co.uk

PRICES AND SPECIFICATIONS

The prices and specifications contained in this price list are for information purposes only as our products are continually updated and changes may be made to the prices and specifications at any time. If you require any specific feature, please consult your authorised Volkswagen retailer who is regularly updated with any change in specification. Prices and specifications are subject to change without notice.

Following the announcement of a price increase, any vehicle order which can be accepted into the factory production system before the effective date of the price increase will be supplied at the current price, even if built and delivered after the date on which the increase became effective.

Note: We would like to advise you that telephone calls to Volkswagen Customer Care may be monitored and recorded as part of our training and quality assurance processes. All our monitoring and recording processes meet OfTel regulations.

ADBLUE[®]

Diesel engines with SCR (Selective Catalytic Reduction) technology require AdBlue[®] which must be kept topped up. Please see www.volkswagen.co.uk/technology/adblue for more details.

- 1 All warranty work must be completed by an authorised Volkswagen retailer or repairer.
- 2 The inspection service first at 3 years (or 40,000 miles) and then every second year (or 40,000 miles) has additional workscope.
- 3 The quoted mileage is based on a conversion from kilometres and is therefore unlikely to exceed circa 18,000 miles between oil changes.
- 4 Volkswagen Car Insurance is underwritten by U K Insurance Limited. Registered Office: The Wharf, Neville Street, Leeds LS1 4AZ. Registered in England and Wales number: 1179980. U K Insurance Limited is authorised by the Prudential Regulation Authority and regulated by the Financial Conduct Authority (FCA) and the Prudential Regulation Authority. Calls may be recorded. Volkswagen Financial Services is a trading name of Volkswagen Financial Services (UK) Limited ('VWFS UK'), registered in England and Wales number: 2835230 (Registered Office: Brunswick Court, Yeomans Drive, Blakelands, Milton Keynes MK14 5LR). Volkswagen Insurance Service (Great Britain) Ltd. is an appointed representative of VWFS UK. VWFS UK is authorised and regulated by the FCA, registration number: 311988. Authorisation details for both organisations can be checked on the Financial Services Register by visiting www.fca.org.uk. VWFS UK and U K Insurance Limited are not part of the same corporate group.
- 5 Ensurance from Volkswagen Financial Services is sold and administered by Lawshield UK Limited, registered in England number: 3360532. Registered office: Lawshield House, 850 Ibis Court, Lakeside Drive, Centre Park, Warrington, Cheshire, WA1 1RL and underwritten by UK General Insurance Limited on behalf of Great Lakes Insurance SE. Great Lakes Insurance SE is a German insurance company with its headquarters at Königinstrasse 107, 80802 Munich. UK Branch office: Plantation Place, 30 Fenchurch Street, London, EC3M 3AJ. Lawshield UK Limited is authorised and regulated by the Financial Conduct Authority (FCA). Authorisation details can be checked on the FCA's register at www.fca.org.uk. Great Lakes Insurance SE, UK Branch, is authorised by Bundesanstalt für Finanzdienstleistungsaufsicht and subject to limited regulation by the Financial Conduct Authority and Prudential Regulation Authority. Details about the extent of their regulation by the Financial Conduct Authority and Prudential Regulation Authority are available on request.
- 6 Finance is available to 18s and over, subject to status. Terms and conditions apply. Volkswagen Finance.

THE TIGUAN

Issued by Volkswagen Marketing, Volkswagen (UK)
© Volkswagen Group United Kingdom Limited 2018
Issue: 26 April 2018

Volkswagen Information Service
Freephone: 0800 333 666
Internet: volkswagen.co.uk

Volkswagen Fleet Business Centre
Freephone: 0800 0093 397
Internet: volkswagen.co.uk/fleet

This price list can be viewed or downloaded in pdf format at:
volkswagen.co.uk



facebook.com/VolkswagenUK



[@UKVolkswagen](https://twitter.com/@UKVolkswagen)



youtube.com/user/ukvolkswagen