

# The T-Roc



Volkswagen





---

# Contents.

- 06 Exterior
- 10 Interior
- 14 Infotainment and connectivity
- 18 Volkswagen Connect®
- 20 Driver's Assistance systems
- 22 The T-Roc S and SE
- 24 The T-Roc Design
- 28 The T-Roc SEL
- 30 The T-Roc R-Line
- 34 Alloy wheels
- 36 Accessories
- 40 Paint and upholstery
- 44 Combinations
- 46 Alloy style packs
- 48 Dimensions
- 49 AdBlue®
- 50 Volkswagen service

Front cover model shown is T-Roc Design with optional 18" 'Arlo' Adamantium Silver alloy wheels and metallic paint.





---

# Made to lead. Designed to inspire.

Do you appreciate good design and individuality? The self-confident T-Roc stands out from the crowd with its expressive design and numerous customisable options. Now available in five trim levels: S, SE, Design, SEL or R-Line, combined with a choice of exterior and interior colours and styling, you can choose a T-Roc that perfectly reflects your personality.



Models shown are T-Roc SEL with optional two-tone black roof and metallic paint and T-Roc Design with optional 18" 'Arlo' Adamantium Silver alloy wheels and metallic paint.





# Strong impression and expression.

Strong, striking and sporty, the T-Roc exudes character and confidence. Take for example the SEL with its wide radiator grille with integrated LED dual headlights and separate unique signature LED daytime running lights\* creating an unmistakable look, especially at night. Strong lines and a wide front air intake emphasise its bold design, with dynamic handling, a host of new technology, impressive standard specification and the option to personalise it to your preferred choice. This all adds up to create an SUV that is as much at home in the city as it is on rough terrain.

\* LED headlights are standard on SEL and R-Line and optional on all other models.



**01** Dynamically designed rear tail lights are wide and distinctive, giving real road presence. On the T-Roc SEL, the **LED darkened rear light clusters** enhance the sporty, modern design, while saving energy and maximising visibility day or night.





01

## A milestone in SUV design.



02



03

**01** The dynamically designed rear diffuser complements the distinctive style of the T-Roc Design, giving a robust, athletic look, while chrome effect trapezoid exhaust tailpipe fascia surrounds to left and right, emphasise its urban character. Distinctive tail lights incorporated into the horizontal bodylines give confidence and presence, and the **sporty body-coloured bumper with silver-metallic underbody fascia** adds a touch of elegance. Image shown is T-Roc Design with optional 18" 'Arlo' Adamantium Silver alloy wheels and metallic paint.

**02** Add your own personal style to your T-Roc Design. With the no cost option **two-tone finish**, you can choose a contrasting colour for the roof, A-pillar and door mirror housings, selecting from Pure White, Black, Flash Red or Dark Oak Brown. The optional LED headlights feature automatic range adjustment with separate unique signature LED daytime running lights, ensuring you can see and be seen more clearly. Image shown is T-Roc Design with Turmeric Yellow dashpad and optional 18" 'Arlo' Adamantium Silver alloy wheels, silver anodised roof rails, LED headlights and metallic paint.

**03** Eye-catching 17 inch 'Mayfield' alloy wheels give the T-Roc Design a distinctive look and can be personalised to your taste with a **choice of traditional silver-finish or three different colour options: Gloss Black, Atlantic Blue or Black/Hot Orange**. Along with the two-tone customisable colour options for the bodywork and roof, what better way to express yourself? Image shown features 17 inch 'Mayfield' Black/Hot Orange alloy wheels which are optional on SE and Design models.



# Self-confidence comes from within.

Robust, modern and elegant, the interior of the T-Roc embraces the future, combining an all-new design with Volkswagen's characteristic build quality. Unprecedented levels of functionality and technology, enhanced by ergonomic attention to detail, places it in a league of its own. With plenty of space for occupants and luggage alike, the T-Roc offers all you could ask for in terms of comfort, style and convenience. Look within and discover the inside story.



01

**01-02** The interior of the T-Roc SEL is luxurious and elegant, with ambient lighting in the front footwell and light strips below the trim in the front doors, enhanced with Caribou Grey decorative inserts in the dash and door panels. Front sport seats, beautifully finished in contemporary 'Gem' cloth upholstery, feature height adjustment, ensuring the optimum driving position, while front and rear reading lights incorporate LED technology for optimum illumination, furthermore the optional panoramic sunroof adds a new dimension of light and spaciousness above. Interior shown is T-Roc SEL with optional panoramic sunroof, Sport pack and metallic paint.



Interior shown is T-Roc SEL DSG 4MOTION with optional Sport pack, beats soundpack, carpet mats and metallic paint.



01-02 Specify the T-Roc Design and you decide on the **dashpad colour**, with a choice of Dark Oak Brown, Energetic Orange, Ravenna Blue or Turmeric Yellow depending on your choice of exterior paint. The dashpad colour you select will also feature on the front interior door panels and centre console trim as well as the central stripe detail of the 'Tracks 4' seat upholstery, creating an interior that's fun, stylish and totally personal. Interior shown below is T-Roc Design with Turmeric Yellow dashpad and optional metallic paint.



01



Interior shown is T-Roc Design DSG with Energetic Orange dashpad and optional Discover Navigation infotainment system, Active Info Display, beats soundpack, carpet mats and metallic paint.

02



# All-new interactive dashboard.

Enjoy all the benefits of an interactive, digital dashboard thanks to a host of standard and optional equipment. The Active Info Display allows you to customise menus as you wish, while the Discover Navigation touch-screen infotainment system keeps you connected and informed, furthermore the powerful beats soundpack delivers exceptional acoustics.



01

**01** The **Composition Media** infotainment system is equipped with an 8.0 inch colour touch-screen, DAB digital radio receiver, Multi Device Interface (MDI), single CD player, SD card reader and USB connection. It allows music playback from MP3, WMA and AAC files, simultaneous pairing of two compatible mobile devices, SMS functionality (when stationary and on compatible Android smartphones only), Bluetooth telephone and audio functionality<sup>1</sup>, and provides driver tips and journey analysis via the 'Think Blue. Trainer.' Six speakers, situated to the front and rear, make sure excellent acoustics are delivered on every journey. Standard on S, SE and Design models.



02

**02** The **Discover Navigation** infotainment system with Car-Net 'Guide and Inform' and Car-Net 'Security & Service' builds upon the impressive Composition Media infotainment system, but with additional features enabling you to easily manage not only your music, but also navigation data and a broad range of vehicle information. The system offers preloaded European navigation data, 2D/3D map view which can be easily followed on the 8.0 inch colour touch-screen, three calculated route choices (Fast, Short and Eco), dynamic navigation based on TMC+, branded points of interest, Speed Limit Display<sup>2</sup> and 3-years Car-Net 'Guide and Inform'<sup>3</sup> access makes it possible to integrate 'traffic information online' into route guidance and transfer public and personal points of interest to the navigation system. The service also includes information for fuel location, weather and news feeds. Car-Net 'Security & Service'<sup>4</sup> acts as your personal assistant supporting you in every driving situation and providing you with all the key information you need regarding your mobility. An integrated SIM-card provides continuous connectivity and interaction between the driver, vehicle and Volkswagen's call centre or server. Standard on SEL and R-Line and optional on all other models.



03



04

**03** The **Active Info Display** provides a 10.3 inch high-resolution TFT dash display with customisable menus that can be configured as you wish, providing such information as detailed driving data, graphic displays of your driver assistance systems, and, when used in conjunction with the optional Discover Navigation system, large map display<sup>5</sup>. Standard on SEL and R-Line and optional on SE and Design models.

**04** The **beats soundpack** delivers just the right amount of bass. Inspired by Dr Dre, it includes six speakers, a subwoofer and an eight channel digital amplifier with Digital Signal Processor (DSP), delivering 400 watt output with Dolby Pro Logic surround sound. It's controlled via your infotainment or navigation system and displays a beats welcome screen when switching on. Optional on SE models and above.

<sup>1</sup> Devices must be Bluetooth HFP (Hands Free Profile) compatible, please contact your authorised Volkswagen retailer for specific phone compatibility.  
<sup>2</sup> Speed Limit Display only reflects national speed limits and does not show temporary speed limit restrictions, or where permanent changes to speed limits are made in-between map updates.  
<sup>3</sup> Car-Net 'Guide and Inform' services are accessed via a compatible mobile device. Please see [www.volkswagen.co.uk](http://www.volkswagen.co.uk) for more information. The use of 'Guide and Inform' services entails exchanging large volumes of data. As such, we strongly recommend that you sign-up for a flat rate data plan with your mobile network provider. After the initial 3-year Car-Net contract, an annual subscription is chargeable for the continuation of Car-Net 'Guide and Inform' services.  
<sup>4</sup> Use of Car-Net 'Security & Service' is governed in a separate Contract concluded online with Volkswagen. The customer has 90 days after vehicle handover to register the vehicle at [www.volkswagen.com/car-net](http://www.volkswagen.com/car-net). This will enable the customer to use Services for the full period of validity. The Emergency Call Service is already activated when the vehicle is delivered, without registration being required. Availability of Car-Net Services may vary depending on the country in question. The services are available during the agreed contractual period and may be subject to amendments during the duration of the contract. To use the free Car-Net app you will need a smartphone with iOS or Android operating system and a SIM-card with a data option. You will also need an appropriate mobile phone contract already in place or separately arranged with your mobile phone provider. Depending on your mobile tariff, sending and receiving data online may incur additional charges (e.g. roaming charges), particularly if you are using Car-Net abroad. For more information on Car-Net Security & Service, go to [www.volkswagen.com/car-net](http://www.volkswagen.com/car-net) or contact your Volkswagen retailer. For information on your mobile tariff rates, please contact your mobile phone provider.  
<sup>5</sup> Please note: When the navigation map is displayed in the Active Info Display in conjunction with the Discover Navigation infotainment system, the navigation map cannot be displayed on the Discover Navigation's infotainment touch-screen.



# Cutting-edge connectivity.

The T-Roc is a pioneer not only in terms of design, but technology too. Cutting-edge connectivity ensures it's never been easier to integrate your mobile devices, whether you're looking to charge your smartphone or stay connected, and there's a wide range of online services and apps available via your smartphone and Volkswagen Car-Net.



01

**01 Car-Net 'Security & Service'<sup>1</sup>** acts as your personal assistant supporting you in every driving situation and providing you with all the key information you need regarding your mobility. An integrated SIM-card provides continuous connectivity and interaction between the driver, vehicle and Volkswagen's call centre or server. In the event of an accident, should the driver activate the 'eCall' button or the airbags are deployed triggering the 'eCall' service, Volkswagen's Emergency Centre will be contacted directly. Key information such as the condition and location of the vehicle will be sent to emergency response units. In the event of minor incidents, the 'Automatic accident notification' can send location and vehicle details to the Volkswagen Emergency Centre should the driver wish. Additional data is also shared including details of 'Car breakdown', 'Vehicle health report' and 'Service schedule' ensuring your vehicle's information is always up to date – 10-year subscription included. Image shown features optional panoramic sunroof.

The service also allows vehicle information to be accessed via the Car-Net Portal or Car-Net app, via a laptop or smartphone, from the comfort of your home or even the office. Information such as 'Driving data', the status of 'Doors and lights', 'Area alert', 'Speed alert', remote control of 'Horn and hazard lights', 'Parking position' and 'Online anti-theft alarm' can be easily accessed and monitored – 3-year subscription included. Standard on SEL and R-Line and optional on all other models.



02

**02** Depending on which smartphone you have, you can connect **Car-Net 'App-Connect'<sup>2</sup>** via USB connection to one of three interfaces: Apple 'CarPlay', Google 'Android Auto' or 'MirrorLink'<sup>™</sup>, allowing your smartphone display to be 'mirrored' on the infotainment touch-screen and giving access to your favourite smartphone functions, such as music, messages, phone and news. Volkswagen apps such as 'Think Blue. Trainer.', 'Shared Audio', 'Drive & Track' or 'My Guide' can help to make your journey more pleasant and interesting by providing useful tips on driving your car, parking opportunities and even where to find the closest café. Volkswagen apps are only available with compatible smartphones. Please consult [www.volkswagen.co.uk](http://www.volkswagen.co.uk) to check smartphone compatibility. Usage of certified apps only while driving. Standard on SE models and above, and optional on S models. Image shown features optional Discover Navigation infotainment system

**03 Car-Net 'Guide and Inform'<sup>3</sup>** gives you online access to a wide range of useful information, such as weather, exciting destinations in your surrounding area, or the next petrol station. You can also receive the latest traffic information with recommendations for avoiding congestion or news and weather feeds from the Internet. Car-Net 'Guide and Inform' is standard on the Discover Navigation infotainment system.



03

<sup>1</sup> Use of Car-Net 'Security & Service' is governed in a separate Contract concluded online with Volkswagen. The customer has 90 days after vehicle handover to register the vehicle at [www.volkswagen.com/car-net](http://www.volkswagen.com/car-net). This will enable the customer to use Services for the full period of validity. The Emergency Call Service is already activated when the vehicle is delivered, without registration being required. Availability of Car-Net Services may vary depending on the country in question. The services are available during the agreed contractual period and may be subject to amendments during the duration of the contract. To use the free Car-Net app you will need a smartphone with iOS or Android operating system and a SIM-card with a data option. You will also need an appropriate mobile phone contract already in place or separately arranged with your mobile phone provider. Depending on your mobile tariff, sending and receiving data online may incur additional charges (e.g. roaming charges), particularly if you are using Car-Net abroad. For more information on Car-Net Security & Service, go to [www.volkswagen.com/car-net](http://www.volkswagen.com/car-net) or contact your Volkswagen retailer. For information on your mobile tariff rates, please contact your mobile phone provider.

<sup>2</sup> Only operable in conjunction with compatible smartphones including iPhone 5 and above. Please see [www.volkswagen.co.uk](http://www.volkswagen.co.uk) to check smartphone compatibility.

<sup>3</sup> Car-Net 'Guide and Inform' services are accessed via a compatible mobile device. Please see [www.volkswagen.co.uk](http://www.volkswagen.co.uk) for more information. The use of 'Guide and Inform' services entails exchanging large volumes of data. As such, we strongly recommend that you sign-up for a flat rate data plan with your mobile network provider. After the initial 3-year Car-Net contract, an annual subscription is chargeable for the continuation of Car-Net 'Guide and Inform' services.



# Volkswagen Connect®.

## All your car's information. All in one place.

Volkswagen Connect is the easy way to connect your T-Roc to your smartphone.

It relays everything you need to know, from service information and fuel consumption, parking location and helpful tips on driving more economically.

### Welcome on board.

Getting started is easy. Follow these simple steps to find out how Volkswagen Connect® can provide you with help and information on every journey.

#### Step 1

Download the free Volkswagen Connect® App to your smartphone from the App Store for iOS, or Google Play Store for Android.

#### Step 2

Follow the instructions in the App.

#### Step 3

Put the DataPlug onto the diagnostic port that you'll find below the steering wheel.

#### Step 4

Connect via Bluetooth.

#### Step 5

That's it.



For a list of all compatible models and for more information visit [www.vwconnect.com](http://www.vwconnect.com)



### My Volkswagen.

The overview of key information about your car such as service and maintenance intervals, warning message displays, fuel level and mileage.



### Trips.

This feature shows detailed map views, trip details, statistics, and the cost of each trip. You can categorise all trips into either business or private, and all of this can be downloaded to your desktop if required.



### Driving style.

This feature can help save you money, analysing and evaluating all the elements of the engine and braking performance, combined with your driving style to give you tips on how to be even more efficient when driving.



### Parking space.

The app automatically remembers where you've parked. And while you're away from your car, it'll show you how long you've been parked for.



### Fuel monitor.

Everything you need to know about your vehicle's fuel consumption and costs. It even tracks your fuel stops, especially useful if you use your car for business purposes.



### Service partner.

Wherever you are, you can see exactly where your nearby retailers are and be navigated to the nearest one. And if you need to call them, the app will put you straight through.



### Assistance call.

Just press and call Volkswagen's 24-hour helpline where you'll be put straight through to Customer Service. And if you're not sure where you are, don't worry, it transmits your location directly to them.



### Challenges.

This feature helps you meet efficiency and driving style targets. Collect points and trophies as you move through the tasks and discover hidden bonus challenges to help keep you improving your scores.





# Driver's assistance systems.



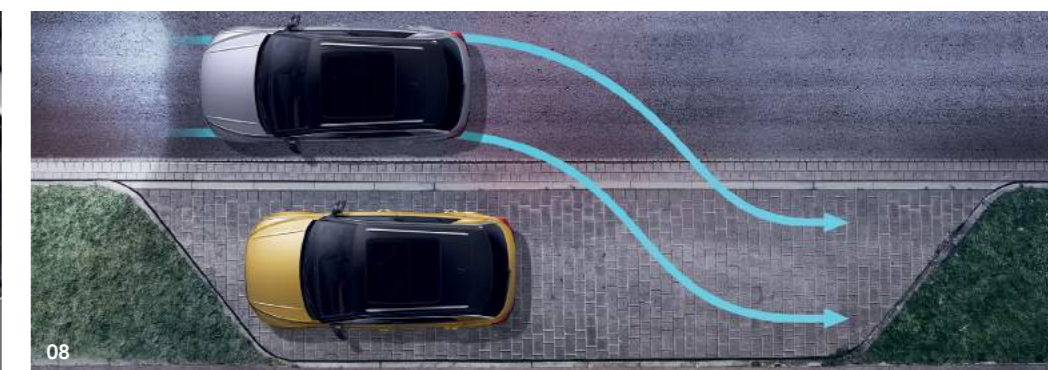
**01 Progressive steering** in the T-Roc gives you better control when driving at higher speeds and additional comfort in everyday use. The progressive gear ratio reduces steering work, making it easier to park and increasing driving dynamics on winding roads. Standard on R-Line models and optional on SE, Design and SEL models as part of the optional Dynamic Chassis Control (DCC) and Sports suspension.

**02 PreCrash preventive occupant protection** recognises dangerous driving situations and automatically takes measures to help protect vehicle occupants, tensioning the front seat belts, closing the electric windows, shutting the optional panoramic sunroof, if fitted, and deploying the brakes. Optional on all models.

**03 Lane Assist** is a camera controlled warning system that alerts you if your vehicle drifts out of its lane, helping to reduce the chance of an accident and making long motorway journeys safer. Using a camera located in the rear-view mirror unit, it monitors the road markings and prevents unintentional lane deviations. The system only intervenes if the indicators are not used, so if you decide to change lanes and indicate, the intelligent system recognises this and switches off. Standard on all models.



Images shown are for illustration purposes only and may not necessarily reflect UK specification.



**04 The Front Assist** monitoring system combines Predictive Pedestrian Protection with City Emergency Braking, alerting you if it detects vehicles or pedestrians at the edge of the road or on the carriageway, via acoustic and optical signals, as well as a gentle application of the brakes. The system even performs an emergency stop should the distance become critical, helping to protect other road users and possibly avert potential accidents. Standard on all models.

**05 The electric tailgate** opens easily and conveniently, either from the driver's seat or using the remote control key. You can also adjust the opening height so it doesn't strike a low ceiling. Once everything is stowed, simply press a button in the tailgate and it closes automatically. Optional on SE models and above.

**06 Front and rear parking sensors** assist parking manoeuvres by emitting both audible and visual signals, alerting the driver to any obstacles in the way. The closer you are to an obstacle the faster the sound frequency, while an optical parking display indicates your position in relation to obstacles on the screen of the vehicle's infotainment system. Standard on SE models and above, and optional on S models.

**07 All 4MOTION models feature 4MOTION Active Control** which allows you to adapt your T-Roc to suit the weather and road conditions ahead. Choose from four driving modes including On road, Off-road, Off-road Individual and Snow, enabling you to find the optimum choice of driving mode wherever your adventures may take you. Standard on all 4MOTION models.

**08 The Park Assist system** not only makes parallel parking easier, but also helps you reverse park into a space at 90 degrees to the kerb. Using ultrasonic sensors, Park Assist will detect a parking space large enough for either bay or parallel parking. Once the vehicle is in reverse, all the driver has to do is operate the accelerator and brake and keep a lookout, while the T-Roc steers itself into its chosen space. Optional on SE models and above.



# T-Roc S and SE.

The T-Roc S and SE feature an impressive range of driver assistance systems and in-car entertainment, as well as many comfort and convenience features, too. For example, the Composition Media infotainment system with 8.0 inch colour touch-screen and proximity sensor allows pairing of two compatible devices via Bluetooth<sup>1</sup> as well as a host of other features. Lane Assist and Front Assist provide extra reassurance on every journey by monitoring the T-Roc's position in relation to the road, as well as potential hazards on the road itself. Exterior design highlights include chrome detailing on the radiator grille and stylish 16 inch 'Chester' alloy wheels on the S and 17 inch 'Kulmbach' on SE models.



Interior shown is T-Roc S with optional carpet mats.



**01 Climate control – 2Zone electronic air conditioning with automatic air recirculation**, which is standard on S and SE models, features dual zone temperature control for the driver and front passenger, allowing each to select their individual preferred temperature. A sensor monitors the outside air quality and if necessary, automatically activates the air recirculation function. Image shown is SE.

**02 Electrically heated, adjustable and foldable door mirrors feature reverse-activated kerb-view adjustment on the passenger's side**, completing the impressive specification, reinforcing the quality and attention to detail. Standard on SE and optional on S models.

**03 Black grained wheel arches** not only provide protection to the exterior paintwork, they also provide the frame for the stylish 16 inch 'Chester' alloy wheels on the T-Roc S.

**04 The sporty looking 17 inch 'Kulmbach' alloy wheels** also provide an elegant flair to the exterior of the T-Roc SE.



**05 The Composition Media infotainment system** is equipped with an 8.0 inch colour touch-screen, DAB digital radio receiver, Multi Device Interface (MDI), single CD player, SD card reader and USB connection. It allows music playback from MP3, WMA and AAC files, simultaneous pairing of two compatible mobile devices, SMS functionality (when stationary and on compatible Android smartphones only), Bluetooth telephone and audio functionality<sup>1</sup>, and provides driver tips and journey analysis via the 'Think Blue. Trainer.' Six speakers, situated to the front and rear, make sure excellent acoustics are delivered on every journey.



**06 Front and rear parking sensors** assist parking manoeuvres by emitting both audible and visual signals, alerting the driver to any obstacles in the way. The closer you are to an obstacle the faster the sound frequency, while an optical parking display indicates your position in relation to obstacles on the screen of the vehicle's infotainment system. Standard on SE and optional on S models.

<sup>1</sup> Devices must be Bluetooth HFP (Hands Free Profile) compatible, please contact your authorised Volkswagen retailer for specific phone compatibility.



# The T-Roc Design. Step out in style.

The T-Roc is designed to be noticed. Its sporty, modern exterior heralds a new era of Volkswagen style, combining the practicality of an SUV with the agility of a sports model. The elongated coupé silhouette is characterised by a striking chrome strip running the length of the side roofline, while a choice of contrasting colours for the roof, A-pillar and door mirror housings on Design models, allow you to create a look that's as individual as you are.

01 Eye-catching 17 inch 'Mayfield' alloy wheels give the T-Roc Design a distinctive look and can be personalised to your taste with a choice of traditional silver-finish or three different colour options: Gloss Black, Atlantic Blue or Black/Hot Orange. Along with the two-tone customisable colour options for the bodywork and roof, what better way to express yourself? Image shown features 17 inch 'Mayfield' Black/Hot Orange alloy wheels which are optional on SE and Design models.



01



Model shown is T-Roc Design with optional 18" 'Arlo' Adamantium Silver alloy wheels and metallic paint.



# An interior that's all about you.

The interior of the T-Roc Design is the epitome of contemporary design and individuality. A choice of four exclusive interior colours gives you maximum opportunity to personalise the interior, creating a look that reflects your taste and style. It's time to express yourself!

**01-03** Specify the T-Roc Design and you decide on the **dashpad colour**, with a choice of Dark Oak Brown, Energetic Orange, Ravenna Blue or Turmeric Yellow depending on your choice of exterior paint. The dashpad colour you select will also feature on the front interior door panels and centre console trim as well as the central stripe detail of the 'Tracks 4' seat upholstery, creating an interior that's fun, stylish and totally personal. Interiors shown feature optional Discover Navigation infotainment system, Active Info Display, beats soundpack, carpet mats and metallic paint.

**04** Front comfort seats in the T-Roc Design feature **'Tracks 4' upholstery**, finished here in 'Turmeric Yellow' stitching to match the dashboard, centre console and interior door panels. Thanks to the Composition Media infotainment system, you can make phone calls safely while you drive or play your favourite music via your smartphone, plus a host of other helpful features. The leather trimmed three-spoke multifunction steering wheel and gear lever knob provide excellent grip and add a sporty touch, while ambient lighting in the front footwell and lighting strips below the trim in the front doors, and front and rear LED reading lights create real atmosphere, especially at night.



01 Dark Oak Brown dashpad



02 Energetic Orange dashpad



03 Ravenna Blue dashpad



Interior shown is T-Roc Design DSG with Turmeric Yellow dashpad and optional Discover Navigation infotainment system, Active Info Display, beats soundpack, carpet mats and metallic paint.





Interior shown is T-Roc SEL DSG 4MOTION with optional Sport pack, beats soundpack, carpet mats and non-metallic paint.

# T-Roc SEL.

The stylish T-Roc SEL provides maximum comfort and convenience. Front sports seats with height adjustment are finished in contemporary 'Gem' cloth upholstery, the dash and door panels feature Caribou Grey decorative inserts and the Discover Navigation infotainment system has an 8.0 inch colour touch-screen. Reading lights front and rear incorporate LED technology for better illumination, while ambient lighting in the front footwell and light strips below the trim in the front doors add to the interior's relaxed feel.



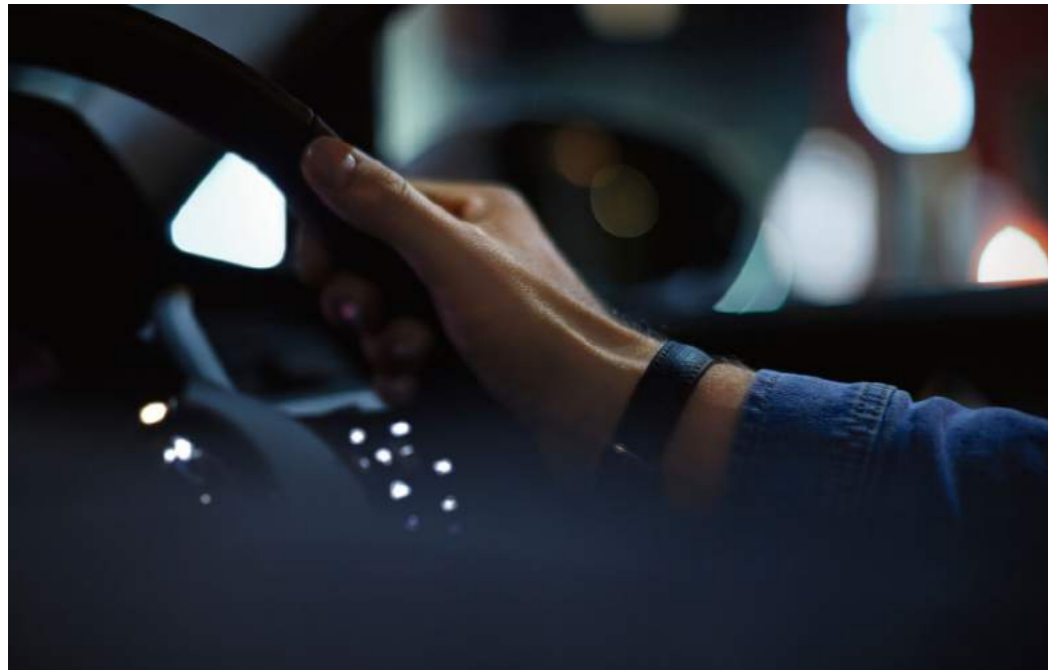
**01** The **Active Info Display** provides a 10.3 inch high-resolution TFT dash display with customisable menus that can be configured as you wish, providing such information as detailed driving data, graphic displays of your driver assistance systems, and, when used in conjunction with the optional Discover Navigation system, large map display<sup>1</sup>.

<sup>1</sup> Please note: When the navigation map is displayed in the Active Info Display in conjunction with the Discover Navigation infotainment system, the navigation map cannot be displayed on the Discover Navigation's 8.0 inch touch-screen.



# T-Roc R-Line.

More distinctive than ever, the dynamic R-Line features the unique 'R-Line' styling pack, comprising a number of sporty exterior touches such as the sporty 19 inch 'Suzuka' alloy wheels, uniquely shaped body-coloured bumpers, side skirts, black wheel arch extensions and badging, and a luxurious interior, with heated front sports seats and aesthetic detail, creating the look and feel of a real sports performer.



Model shown is T-Roc R-Line with optional two-tone black roof and Pure White non-metallic paint.





01



02



03

**01** The interior of the T-Roc R-Line displays sporty elegance in every detail. The leather trimmed three-spoke multifunction steering wheel with contrast decorative stitching in crystal grey and aluminium inserts with the exclusive 'R-Line' logo. Front and rear carpet mats also feature contrast stitching whilst aluminium-look pedals, black rooflining and sun visors complete the sporty R-Line styling.

**02** The heated front sports seats are ergonomically designed for both comfort and style. Finished in stylish 'Carbon Flag' with the 'R-Line' logo displayed on the seat backrests, not only do they look good, but also provide excellent lateral support when cornering. In addition, heated windscreen washer jets and a low washer fluid warning light also form part of the winter pack, adding a touch more comfort, as well as additional safety.

**03** Unique door sill protectors proudly feature the 'R-Line' logo, adding style as well as protection.



# Alloy wheels.

01 'Chester' 6½ x 16" alloy wheels with 215/60 R16 95V low rolling resistance tyres and anti-theft wheel bolts.

02 'Kulmbach' 7J x 17" alloy wheels with 215/55 R17 94V low rolling resistance tyres and anti-theft wheel bolts.

03 'Mayfield' 7J x 17" alloy wheels with 215/55 R17 94V tyres and anti-theft wheel bolts.

04 'Arlo' Sterling Silver 7J x 18" alloy wheels with 215/50 R18 92W low rolling resistance tyres and anti-theft wheel bolts.

05 'Suzuka' 7J x 19" with 225/40 R19 93W low rolling resistance tyres and anti-theft wheel bolts.

06 'Kulmbach' Adamantium Silver 7J x 17" with 215/55 R17 94V tyres and anti-theft wheel bolts.

07 'Mayfield' Atlantic Blue diamond-turned 7J x 17" alloy wheels with 215/55 R17 94V tyres and anti-theft wheel bolts.

08 'Mayfield' Gloss Black diamond-turned 7J x 17" alloy wheels with 215/55 R17 94V tyres and anti-theft wheel bolts.

09 'Mayfield' Black/Hot Orange diamond-turned 7J x 17" alloy wheels with 215/55 R17 94V tyres and anti-theft wheel bolts.

10 'Montego Bay' diamond-turned 7J x 18" alloy wheels with 215/50 R18 92W low rolling resistance tyres and anti-theft wheel bolts.

11 'Arlo' Adamantium Silver 7J x 18" alloy wheels with 215/50 R18 92W low rolling resistance tyres and anti-theft wheel bolts.

Standard    Optional  
 SE | SE Design | D SEL | SEL R-Line | RL

\* Not in conjunction with 1.0 ltr TSI 115 PS engines.  
 † Only in conjunction 1.0 ltr TSI 115 PS engine.  
 Images shown feature optional metallic paint.



01

S



02

SE



03

D

SE



04

SEL\*

SE\*

D\*



05

RL



06

SE



07

SE

D



08

SEL\*

SE

D



09

SE

D



10

SE\*

D\*

SEL\*



11

SE\*

D\*

SEL\*



# Accessories.

Make a statement and further enhance your T-Roc to suit your lifestyle and adventure by choosing from our wealth of stylish, innovative and sporty Volkswagen accessories. Choose from the high-quality carrier systems to the practical protection solutions and select the accessories to perfectly match your lifestyle.

**01** The T-Roc gives you an even more striking appearance with perfectly matched accessories: on the sides, running boards underline the off-road look, whilst the bicycle holder adds practicality to your vehicle and the rear chrome strip enhances the elegance of the rear tailgate.

Images shown are for illustration purposes only and may not necessarily reflect UK specification. Model shown features optional two-tone black roof and metallic paint.



01

# Protection.



02

## 02 Luxury carpet mat set

Enjoy a touch of luxury beneath your feet with this deeper pile carpet. Each one is made of durable thickly-woven velour and the model branded front mats come with secure stud fixing to prevent slipping. Four-piece set.  
Part number: 2GB 061 270 WGK

## 03 Front rubber floor mats

Protecting your vehicle interior against dirt and moisture, rubber mats are designed to fit perfectly, are easy to clean and have a non-slip underside. Two-piece set.  
Part number: 2GB 061 502 82V

## Rear rubber floor mats (not shown)

Two-piece set.  
Part number: 2GD 061 512 82V



03

## 04 Door sill film

These black/silver sill protectors enhance the appearance of the vehicle. They also protect the sills against scratches from shoes and heels. Four-piece set.  
Part number: 2GA 071 310 AZM D

## 05 Flexible loadliner

This light, flexible and washable custom-made loadliner fits perfectly to the vehicle boot contours, protecting it from moisture and dirt. The moulded inlay prevents movement of goods in the boot. If the boot liner is not required, it can be simply rolled up to save space.  
Part number: 2GA 061 160



04



05

Models shown features optional metallic paint.



## Travel and transport.

### 01 Fixed towbar – including electrics

Expand your horizons by expanding the capabilities of your vehicle with this infinitely practical, and clever, towbar. Full integration into the vehicle's CAN-bus network is provided for all electrical components, including support for the trailer stabilisation system, switching to stand-by current and the adjustment of all the vehicle's assistance systems. 13-pin electrical installation kit included.

Part number: 2GA 092 103

### 02 Bicycle holder

Safely transport bicycles on the roof of your T-Roc. The wheel rails are aerodynamically designed and ensure the bicycle is correctly positioned. They enable you to use both hands to fix the wheels and frame. Thanks to the quick-fastening system, the bicycle holder is easy to fit onto the roof bars, without using any tools. The carrier also includes anti-theft protection. Suitable for maximum down tube widths of 80mm, bike weights of up to 20kg.

Part number: 000 071 128 F

### 03 Roof bars

Well equipped on the move – thanks to the Volkswagen Accessories roof bar systems. The basis for this are the City-Crash tested aerodynamically-shaped aluminium profile roof bars to which, for example, surf board, bicycle, ski and snowboard holders or the practical roof boxes can be attached to the vehicle roof in no time at all. Two-piece set.

Part number: 2GA 071 151 A

### 04 Roof box – matt black

Take the pressure off the boot when you next head away on holiday and pack all those essentials into one of these stylish Volkswagen roof boxes. In matt black, they not only fit a lot in, they look the business too. 340 litres, maximum load capacity 50kg.

Part number: 000 071 200



## Styling and technology.

### 01 Running boards

Integrated running boards enhance the T-Roc's unique SUV character and with anti-slip inserts they also offer a safe entry into the vehicle, especially for children. They have a 200kg per step carrying capacity. Alternative Jack 5QF011031C may be required – RRP £15. Not compatible with Mudflaps.

Part number: 2GA 071 691

### 02 Door sill trim – stainless steel

An eye-catching addition that keeps the scratches off the entry points to your pride and joy. These stainless steel strips add a stylish touch.

Two-piece set (Front only).

Part number: 2GA 071 303

### 03 Rear chrome strip

Protective strip for the lower edge of the rear tailgate. It not only enhances the appearance of the vehicle with its chrome look effect, it also acts as an edge protector.

Part number: 2GA 071 360

Models shown features optional metallic paint.



# Paint.

01 Pure White Non-Metallic 0Q

02 Urano Grey Non-Metallic 5K

03 Flash Red Non-Metallic D8

04 Energetic Orange Metallic 4M

05 Ravenna Blue Metallic 5Z

06 Turmeric Yellow Metallic 6T

07 Atlantic Blue Metallic H7

08 White Silver Metallic K8

09 Dark Oak Brown Metallic P0

10 Indium Grey Metallic X3

11 Deep Black Pearl Effect 2T

Roof options for SE\*, Design, SEL\* and R-Line\* models

12 Pure White

13 Black

14 Flash Red

15 Dark Oak Brown

■ Standard □ Optional

S | S SE | SE Design | D SEL | SEL R-Line | RL

Please note: Colour range is reproduced for illustration purposes only. Actual on-car colours may vary from those shown, as screen technology does not allow exact reproduction of the paint colours.  
\* Black roof available on SE, SEL and R-Line models at extra cost.

Models shown are T-Roc Design with optional Park Assist, panoramic sunroof and LED headlights.



01

S  SE  D  SEL  RL



02

S  SE  D  SEL  RL



03

S  SE  D  SEL  RL



04

S  SE  D  SEL  RL



05

S  SE  D  SEL  RL



06

S  SE  D  SEL  RL



07

S  SE  D  SEL  RL



08

S  SE  D  SEL  RL



09

S  SE  D  SEL  RL



10

S  SE  D  SEL  RL



11

S  SE  D  SEL  RL

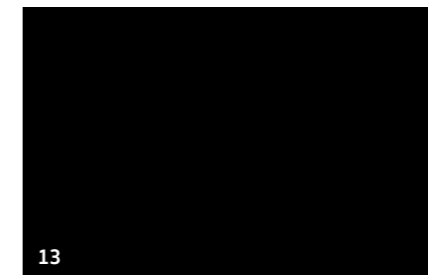
# Roof options.

Image shown is for illustration purposes only and may not necessarily reflect UK specification.



12

D



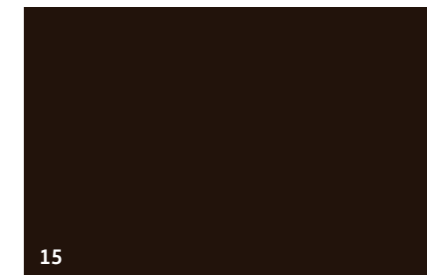
13

SE  D  SEL  RL



14

D



15

D



# Upholstery.

## Standard on S models

01 'Mercurio' cloth Titan Black EL

## Standard on SE

02 'Tracks 4' cloth Dark Oak Brown/Ceramique FF

## Standard on Design models

02 'Tracks 4' cloth Dark Oak Brown/Ceramique FF

03 'Tracks 4' cloth Black/Energetic Orange GL\*

04 'Tracks 4' cloth Black/Ravenna Blue GK\*

05 'Tracks 4' cloth Black/Turmeric Yellow GJ\*

## Standard on SEL models

06 'Gem' cloth Titan Black/Ceramique FJ

## Standard on R-Line models

07 'Carbon Flag' cloth Titan Black/Flint Grey OK

## Optional on SEL<sup>†</sup> models as part of the Sport pack

08 'Gem' cloth Titan Black/Ceramique/Red JQ

## Optional on SE, Design and SEL models

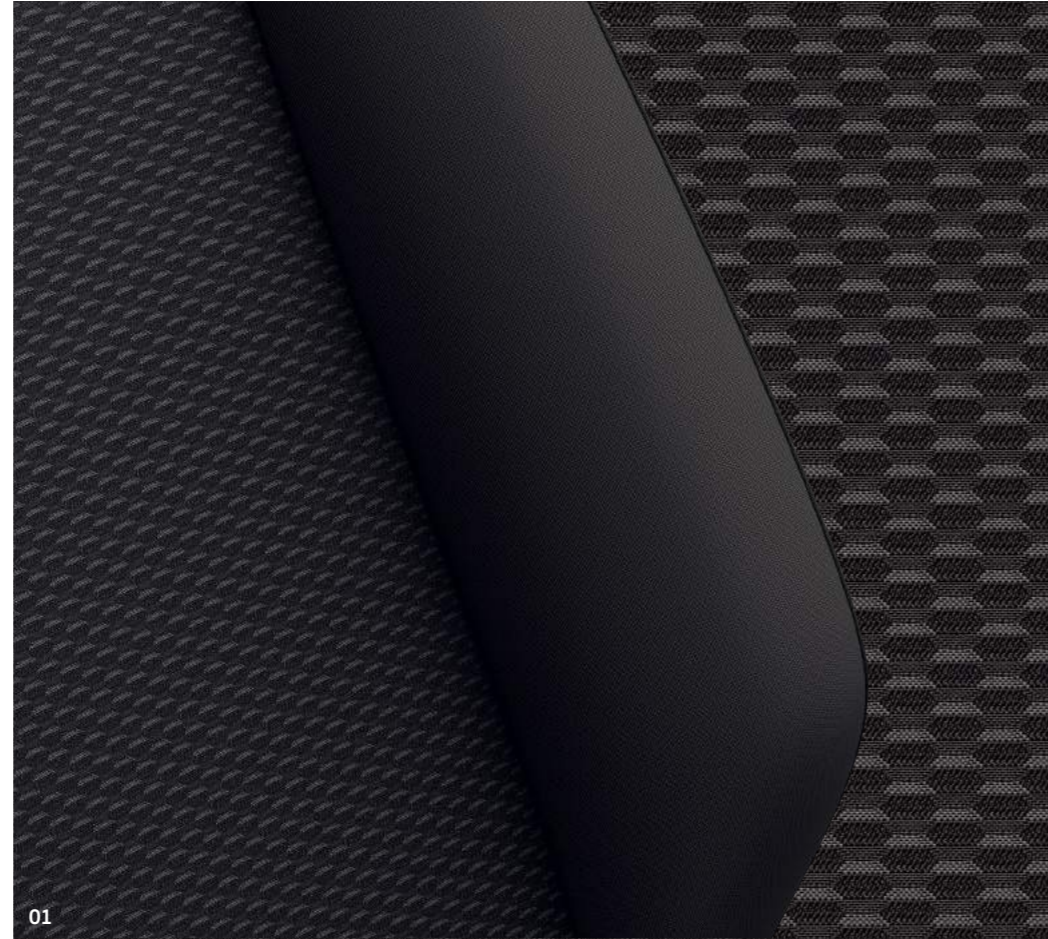
09 'Vienna' leather<sup>‡</sup> Quartz/Ceramique HR

10 'Vienna' leather<sup>‡</sup> Orange/Quartz HY

■ Standard □ Optional

S | S SE | SE Design | D SEL | SEL R-Line | RL

\* Optional on Design models as part of the Dashpad pack.  
 † Not in conjunction with 1.0 ltr TSI 115 PS engine.  
 ‡ Some parts of leather interior will contain artificial leather.  
 Please note: Swatches reproduced for illustration purposes only.  
 Actual upholstery colours may vary from those shown, as screen technology does not allow exact reproduction of the upholstery colours.



01

S



02

SE D



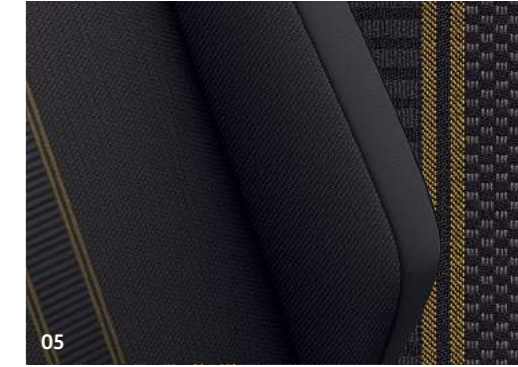
03

D\*



04

D\*



05

D\*



06

SEL



07

RL



08

SEL



09

SE D SEL



10

SE D SEL



# Paint, upholstery, dashpad and roof combinations.

Seat upholstery	Dashboard upper/lower	Dashpad	Ambient lighting	Carpet/contrast stitching	Rooflining
<b>'Mercurio' cloth</b> – Standard on S models					
Titan Black EL	● Titan Black	● Deep Matt Black	-	● Black	● Ceramique
<b>'Tracks 4' cloth</b> – Standard on SE models					
Dark Oak Brown/Ceramique FF	● Titan Black	● Dark Oak Brown	-	● Black	● Ceramique
<b>'Tracks 4' cloth</b> – Standard on Design models					
Dark Oak Brown/Ceramique FF	● Titan Black	● Dark Oak Brown	○ White	● Black/Crystal Grey	● Ceramique
Black/Energetic Orange GL	● Titan Black	● Energetic Orange	○ White	● Black/Crystal Grey	● Ceramique
Black/Ravenna Blue GK	● Titan Black	● Ravenna Blue	○ White	● Black/Crystal Grey	● Ceramique
Black/Turmeric Yellow GJ	● Titan Black	● Turmeric Yellow	○ White	● Black/Crystal Grey	● Ceramique
<b>'Gem' cloth</b> – Standard on SEL models					
Titan Black/Ceramique FJ	● Titan Black	● Caribou Grey	○ White	● Black	● Ceramique
<b>'Carbon Flag' cloth</b> – Standard on R-Line models					
Titan Black/Flint Grey OK	● Titan Black	● Caribou Grey	○ White	● Black	● Black
<b>'Vienna' leather *</b> – Optional on SE models					
Quartz/Ceramique HR	● Titan Black	● Dark Oak Brown	-	● Black	● Ceramique
Orange/Quartz HY	● Titan Black	● Dark Oak Brown	-	● Black	● Ceramique
<b>'Vienna' leather *</b> – Optional on Design models					
Quartz/Ceramique HR	● Titan Black	● Dark Oak Brown	○ White	● Black/Crystal Grey	● Ceramique
Orange/Quartz HY	● Titan Black	● Energetic Orange	○ White	● Black/Crystal Grey	● Ceramique
Orange/Quartz HY	● Titan Black	● Dark Oak Brown	○ White	● Black/Crystal Grey	● Ceramique
Quartz/Ceramique HR	● Titan Black	● Energetic Orange	○ White	● Black/Crystal Grey	● Ceramique
Quartz/Ceramique HR	● Titan Black	● Ravenna Blue	○ White	● Black/Crystal Grey	● Ceramique
Quartz/Ceramique HR	● Titan Black	● Turmeric Yellow	○ White	● Black/Crystal Grey	● Ceramique
<b>'Vienna' leather *</b> – Optional on SEL models					
Quartz/Ceramique HR	● Titan Black	● Caribou Grey	○ White	● Black	● Ceramique
Orange/Quartz HY	● Titan Black	● Caribou Grey	○ White	● Black	● Ceramique
<b>Sport pack with 'Gem' cloth *†</b> – Optional on SEL models					
Titan Black/Ceramique with Red contrast stitching JQ	● Titan Black	● Caribou Grey	● Red	● Black	● Black
<b>Sport pack with 'Vienna' leather *†</b> – Optional on SEL models					
Quartz/Ceramique HR	● Titan Black	● Caribou Grey	● Red	● Black	● Black

- Not available. \* Optional at extra cost. † Optional at extra cost on SE and SEL models. ‡ Not in conjunction with 1.0 ltr TSI 115 PS engine.

Roof colour	Standard/Optional two-tone roof colour¹	Pure White Non-Metallic* OQ	Urano Grey Non-Metallic SK	Flash Red Non-Metallic* D8	Energetic Orange Metallic* 4M	Ravenna Blue Metallic* 5Z	Turmeric Yellow Metallic* 6T	Atlantic Blue Metallic* H7	White Silver Metallic* K8	Dark Oak Brown Metallic* P0	Indium Grey Metallic* X3	Deep Black Pearl Effect* 2T
Body-coloured	-	□	■	■	■	■	■	■	■	■	■	■
Body-coloured	■ Black	□ ■	■	■ ■	■ ■	■ ■	■ ■	■	■ ■	■ ■	■ ■	■
-	□ Pure White ■ Black ■ Flash Red ■ Dark Oak Brown	■ ■ ■	□	□ ■	□ ■ ■	□ ■	□ ■ ■	□	■ ■ ■	□ ■	□ ■	□ ■
-	□ Pure White ■ Black ■ Dark Oak Brown	■ ■	□	-	□ ■ ■	-	-	-	■ ■	□ ■	□ ■	□ ■
-	□ Pure White ■ Black	■	□	-	-	□ ■	-	-	■	□ ■	□ ■	□
-	□ Pure White ■ Black ■ Dark Oak Brown	■ ■	□	-	-	-	□ ■ ■	□	■ ■	□ ■	□ ■	□ ■
Body-coloured	■ Black	□ ■	■	■ ■	■ ■	■ ■	■ ■	■	■ ■	■ ■	■ ■	■
Body-coloured	■ Black	□ ■	■	■ ■	■ ■	■ ■	■ ■	■	■ ■	■ ■	■ ■	■
Body-coloured	■ Black	□ ■	■	■ ■	■ ■	■ ■	■ ■	■	■ ■	■ ■	■ ■	■
Body-coloured	■ Black	□ ■	-	-	■ ■	-	-	-	■ ■	■ ■	-	■
Body-coloured	■ Black	□ ■	-	-	■ ■	-	-	-	■ ■	■ ■	-	■
-	□ Pure White ■ Black ■ Flash Red ■ Dark Oak Brown	■ ■ ■	□	□ ■	□ ■ ■	□ ■	□ ■ ■	□	■ ■ ■	□ ■	□ ■	□ ■
-	□ Pure White ■ Black ■ Dark Oak Brown	■ ■	□	-	□ ■ ■	-	-	-	■ ■	□ ■	□ ■	□ ■
-	□ Pure White ■ Black ■ Dark Oak Brown	■ ■	□	-	□ ■ ■	-	-	-	■ ■	□ ■	□ ■	□ ■
-	□ Pure White ■ Black ■ Dark Oak Brown	-	-	-	□ ■ ■	-	-	-	-	-	-	□
-	□ Pure White ■ Black	-	-	-	-	□ ■	-	-	-	-	-	-
-	□ Pure White ■ Black	-	-	-	□ ■	-	□ ■	-	-	-	-	-
Body-coloured	■ Black	□ ■	■	■ ■	■ ■	■ ■	■ ■	■	■ ■	■ ■	■ ■	■
Body-coloured	■ Black	□ ■	-	-	■ ■	-	-	-	■ ■	■ ■	■	■
Body-coloured	□ Pure White ■ Black ■ Dark Oak Brown	□ ■ ■	■	■ ■	-	■ ■	-	■	■ ■ ■	■ ■	■ ■	■
Body-coloured	□ Pure White ■ Black ■ Flash Red ■ Dark Oak Brown	□ ■ ■	■	■ ■	-	■ ■	-	■	■ ■ ■	■ ■	■ ■	■







# Dimensions.

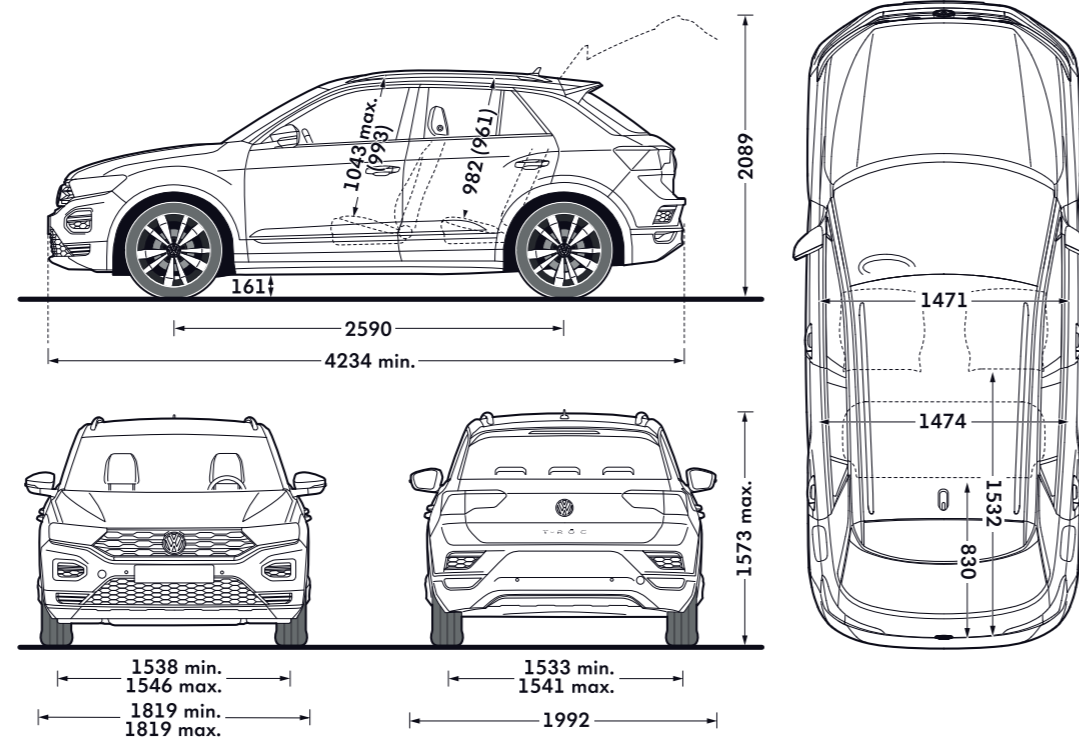
Exterior dimensions	S, SE, Design, SEL, R-Line
Length – min., mm	4234
Width – inc. door mirrors, mm	1992
Height – mm	1573 [1572]
Height – opened tailgate/floor, mm	2089
Wheelbase, mm	2590 [2593]
Turning circle, m	11.1
Approach angle, degrees	16.4°
Departure angle, degrees	18.8° [18.4°]
Ramp angle, degrees	12.8° [12.5°]

Interior dimensions	S, SE, Design, SEL, R-Line
Effective headroom – front max., mm (with sunroof)	1043 (993)
Effective headroom – rear, mm (with sunroof)	982 (961)
Interior width – front, mm	1471
Interior width – rear, mm	1474

Maximum luggage capacity, litres VDA measuring method using 200 x 100 x 50mm blocks	S, SE, Design, SEL, R-Line
With rear seats upright and rear bench forward	445 [392]
With rear seats folded and rear bench forward	1290 [1237]

Figures shown are for standard specification models. The addition of certain factory-fitted options and/or accessories may affect some of the dimensions shown.

[ ] 4MOTION figures



On illustrations, where arrows and figures are shown inside of the vehicle, the measurements are for interior dimensions. Where arrows and figures are shown outside of the vehicle, the measurements are for exterior dimensions.

# AdBlue®

Your Volkswagen car is fitted with an advanced emissions control system, which helps your vehicle meet EURO 6 exhaust gas regulations.

## How does the system work?

AdBlue®, a water/urea based additive, is stored in a tank (like diesel fuel), however, unlike fuel it is not injected into the engine, but directly into a specially modified part of the vehicle's exhaust. This begins a chemical reaction which removes the polluting oxides of nitrogen (NOx), converting them into harmless oxygen and nitrogen in a process known as Selective Catalytic Reduction, or SCR for short. SCR is only applicable to diesel engines and the more economically you drive, typically, the less AdBlue® you will use.

The size of the AdBlue® tank fitted to your car will vary depending on which Volkswagen model you have, therefore the interval between top-ups will vary. In addition, many factors such as mileage, journey type, driving style and environmental conditions can influence how much AdBlue® is consumed. A passenger car can consume approximately 1.5 litres of AdBlue® every 620 miles (1.0–1.5 litres for the Passat and Passat Estate). The chart below details the AdBlue® tank size and location.

Model (SCR derivatives only)	Tank size (Approximately)	AdBlue® tank filler location	Initial warning of low AdBlue® (2,400km/1,500 miles to go) can be expected to occur at:
T-Roc	12 litres	Next to fuel filler nozzle	3,000 to 4,000 miles or sooner*

\* Distances are approximate and the warning light may come on sooner depending on driving style, journey type, engine and vehicle load and environmental conditions.

## How will I know if the system needs topping-up?

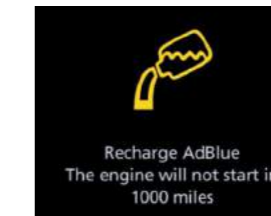
A series of warnings will be given via the driver information system, accompanied by advice/messages.

The first message is displayed when the remaining range is approximately 1,500 miles, and is repeated every 62 miles until the range reaches 1,000 miles, at which point the warning turns amber. This warning is repeated every 31 miles and is accompanied by an audible tone. If these warnings are not acted upon, the warning turns red; once this happens the car will not restart once the ignition is turned off. This is not a fault, but a required feature of the system. If this stage is reached the system will need a full top-up before the car can be restarted. Further information is available in the vehicle handbook.

## Why should I use a Volkswagen Authorised repairer for top-ups?

- AdBlue® top-ups at authorised repairers are extremely competitive and charged by the litre, so you only pay for what you need
- Authorised repairer staff are trained to handle AdBlue®
- AdBlue® tanks need special adaptors on fillers to ensure there are no spillages
- Volkswagen do not recommend keeping top-up bottles in cars

The top-up bottles supplied by Volkswagen have a capacity of 1.89 litres, and come complete with the adaptor nozzles that fit the Volkswagen AdBlue® tank. These are available from all Volkswagen Authorised repairers.



AdBlue® warning lights.

## Important information

- AdBlue® is not a fuel additive. This is why there is a separate AdBlue® tank
- If you put AdBlue® in your fuel tank by mistake, please do not start the engine, but contact a retailer for help
- Put only AdBlue® in the AdBlue® tank; do not fill the AdBlue® tank with any other liquids
- Prevent anything from contaminating AdBlue®
- If small quantities of AdBlue® come into contact with the vehicle's paintwork, for example, wipe them off and if necessary rinse the area with water



# Volkswagen service.

**Exclusions and terms and conditions apply to all warranties and plans listed. For pricing and further details of Volkswagen Warranties and Service Plans, please consult your authorised Volkswagen retailer or repairer, or visit [www.volkswagen.co.uk](http://www.volkswagen.co.uk)**

## The Volkswagen Warranty Three-year Warranty

All Volkswagen passenger cars come with a three-year/60,000 miles warranty, which protects your car against the failure of most technical and electrical components due to manufacturing defects. This comprises a two-year manufacturer's warranty with unlimited mileage plus a further one-year/60,000 miles (whichever is soonest) Retailer Warranty<sup>1</sup>. Should the mileage exceed 60,000 miles within the first two years, the manufacturer's two-year warranty will still be valid. Full details of the three-year warranty are available from your authorised Volkswagen retailer or repairer.

## Body Protection Warranty

The internal body sections and panels of the T-Roc are covered against rusting through from the inside for 12 years. Naturally, the vehicle must be cared for in compliance with the manufacturer's operating instructions. Please consult your authorised Volkswagen retailer or repairer for full warranty details.

## Three-year Paintwork Warranty

This latest paintwork warranty, pioneered by Volkswagen, provides you with cover on a new car. Naturally, during the warranty period the car must be cared for in compliance with the manufacturer's operating instructions. Any paintwork defects, as a result of the manufacturing process, will be rectified without charge.

## Approved Accessories

A comprehensive range of accessories from alloy wheels to carpet mats is available to complement the factory-fitted option list. Volkswagen approved accessories purchased from and fitted by your authorised Volkswagen retailer at the point of vehicle sale will also benefit from the three-year vehicle warranty.

## Service Intervals

Volkswagen is pleased to offer you a choice on how your Volkswagen is serviced. The appropriate selection is entirely dependent on how the car is likely to be driven and its general use. To help you identify which type of service would be most suitable, please refer to the following guide.

The Fixed Service is recommended for vehicles that will cover less than 10,000 miles in 12 months and if the vehicle is likely to be used in the following way:

- Predominantly urban driving, short journeys with frequent cold starts.
- Activities regularly producing high engine loading, e.g. frequent hill climbs, driving with vehicle fully loaded and towing.
- Uneconomical driving style using high rpms with heavy acceleration and heavy braking.

The service intervals for the Fixed Service are as follows:

- Oil change service – After 1 year or 10,000 miles (15,000km), whichever is soonest.
- Inspection service<sup>2</sup> – First after 2 years or 20,000 miles (30,000km), then every one year or 20,000 miles (30,000km), whichever is soonest.

The Flexible Service is recommended for vehicles with daily mileage of more than 25 miles where the vehicle is driven regularly mainly on longer distance journeys. The vehicle is driven mainly at a constant speed with minimum vehicle and engine loading, minimal towing and driven in an economical manner. With the Flexible Service the vehicle can cover anywhere between 10,000<sup>3</sup> and a maximum of 20,000<sup>3</sup> miles or 24 months (whichever is soonest) between oil changes.

The service intervals for the Flexible Service are as follows:

- Oil change service – According to flexible service interval display (after 2 years at the latest).
- Inspection service<sup>2</sup> – First after 2 years or 20,000 miles (30,000km), then every one year or 20,000 miles (30,000km), whichever is soonest.

The up! model is only available with the Fixed Service schedule. Please consult your authorised Volkswagen retailer or repairer for advice and full details.

Please note: If you purchase a Volkswagen Fixed Price Service Plan your vehicle will follow the Fixed Service schedule.

## Volkswagen Insurance<sup>4</sup>

We want you to start enjoying your new car from day one, and thanks to our 5 day complimentary Volkswagen Drive Away Insurance you can. Call 0345 300 6119 (lines are open Monday to Friday 8am-8pm and Saturday 9am-5pm). If eligible, we will also give you a quotation for our annual insurance, designed specifically for Volkswagen drivers.

## Volkswagen Ensurance<sup>5</sup>

Get three years' Volkswagen Ensurance cover for free.

Another great benefit of being a Volkswagen driver. If your Volkswagen was damaged in an accident, wouldn't you want it fixed by a Volkswagen trained technician using only genuine Volkswagen parts? Ensurance is Volkswagen's accident and repair cover which does exactly that. It works alongside your main comprehensive motor insurance policy no matter who you are insured with, to make sure you get the quality repair and service you would want. If you're involved in an accident or your car is stolen, just one call to us and we'll look after your claim from start to finish ensuring your Volkswagen is restored to the highest standard.

Activate your cover and benefit from:

- A guarantee that your Volkswagen will be repaired by a Volkswagen approved repairer and Volkswagen trained technicians, using only genuine Volkswagen parts and paints.
- A dedicated Claims Manager who will manage your claim from start to finish, liaising with your insurer and the repairer so you don't have to.
- Help to recover any uninsured losses using our Legal Expenses Cover.
- Online claims tracking so you can keep up to date with the status of any claim.

Volkswagen Ensurance is free to all Volkswagen customers for three years and it only takes a minute to get cover. To find out more and to activate your cover, visit [www.volkswagen-ensurance.co.uk](http://www.volkswagen-ensurance.co.uk)

## Volkswagen Finance<sup>6</sup>

Volkswagen Finance specialises in providing funding solutions for Volkswagen drivers. Whether your Volkswagen is for private or business use, you can choose from a range of funding options.

- Solutions – a Personal Contract Plan
- Hire purchase
- Lease purchase
- Finance lease
- Contract hire

With all Volkswagen Finance products you can choose a fixed-cost maintenance plan to help you budget for your servicing and maintenance costs. No matter what finance product you choose, your local Volkswagen retailer will be able to provide you with a personalised quote that could meet your budget and vehicle needs.

## Tax Free Sales

For full details, please contact your authorised Volkswagen retailer.

## Volkswagen Roadside Assistance

Every new car is registered for Volkswagen Roadside Assistance for one year except the Touareg which is registered for three years. This provides vehicle roadside and home recovery in the unlikely event of a breakdown in the UK and Europe (subject to conditions). Volkswagen Roadside Assistance can also be purchased for subsequent years.

**Exclusions and terms and conditions apply. For pricing and further details of Volkswagen Roadside Assistance, please consult your authorised Volkswagen retailer, or visit [www.volkswagen.co.uk](http://www.volkswagen.co.uk)**

## Fuel consumption and CO<sub>2</sub> Emissions

Fuel consumption and CO<sub>2</sub> figures are obtained under standardised EU test conditions (Directive 93/116/EEC). This allows a direct comparison between different manufacturer models but may not represent the actual fuel consumption achieved in 'real world' driving conditions. More information is available on the Volkswagen website at [www.volkswagen.co.uk](http://www.volkswagen.co.uk) and at [www.dft.gov.uk/vca](http://www.dft.gov.uk/vca). The weight of a vehicle will influence the level of CO<sub>2</sub> emissions it produces; as a result, vehicles with higher levels of specification and factory-fitted options may emit higher levels of CO<sub>2</sub>. Choosing larger alloy wheels than those fitted as standard may result in increased fuel consumption as well as higher CO<sub>2</sub> emissions and subsequently an increased Vehicle Excise Duty (VED) band. BIK rates paid by company car drivers may also increase. In some instances, the recommended 'On the road' retail price paid for a vehicle may increase as a result of the increased VED rate. CO<sub>2</sub> is the main greenhouse gas responsible for global warming. The specifications contained in this brochure are for information purposes only and are subject to change.

## AdBlue<sup>®</sup>

Diesel engines with SCR (Selective Catalytic Reduction) technology require AdBlue<sup>®</sup> which must be kept topped up. Please see page 49 or visit [www.volkswagen.co.uk/technology/adblue](http://www.volkswagen.co.uk/technology/adblue) for more details.

## Please note:

Some illustrations in this brochure do not necessarily reflect UK specifications and may not be available. In particular, controls and some items of equipment are positioned differently for the UK. The specifications contained in this brochure are for information purposes only and are subject to change. If you require any specific feature, you must consult your authorised Volkswagen retailer who is regularly updated with any change in specification. Please check model availability and full specification details with your authorised Volkswagen retailer prior to ordering. Note: we would like to advise you that telephone calls to Volkswagen Customer Care may be monitored and recorded as part of our training and quality assurance processes. All our monitoring and recording processes meet OfTel regulations.

<sup>1</sup> All warranty work must be completed by an authorised Volkswagen retailer or repairer.

<sup>2</sup> The inspection service first at 3 years (or 40,000 miles) and then every second year (or 40,000 miles) has additional workscope.

<sup>3</sup> The quoted mileage is based on a conversion from kilometres and is therefore unlikely to exceed circa 18,000 miles between oil changes.

<sup>4</sup> Volkswagen Car Insurance is underwritten by U K Insurance Limited. Registered Office: The Wharf, Neville Street, Leeds LS1 4AZ. Registered in England and Wales number: 1179980. U K Insurance Limited is authorised by the Prudential Regulation Authority and regulated by the Financial Conduct Authority (FCA) and the Prudential Regulation Authority. Calls may be recorded. Volkswagen Financial Services is a trading name of Volkswagen Financial Services (UK) Limited ('VWFS UK'), registered in England and Wales number: 2835230 (Registered Office: Brunswick Court, Yeomans Drive, Blakelands, Milton Keynes MK14 5LR). Volkswagen Insurance Service (Great Britain) Ltd. is an appointed representative of VWFS UK. VWFS UK is authorised and regulated by the FCA, registration number: 311988. Authorisation details for both organisations can be checked on the Financial Services Register by visiting [www.fca.org.uk](http://www.fca.org.uk). VWFS UK and U K Insurance Limited are not part of the same corporate group.

<sup>5</sup> Ensurance from Volkswagen Financial Services is sold and administered by Lawshield UK Limited, registered in England number: 3360532. Registered office: Lawshield House, 850 Ibis Court, Lakeside Drive, Centre Park, Warrington, Cheshire, WA1 1RL and underwritten by UK General Insurance Limited on behalf of Great Lakes Insurance SE. Great Lakes Insurance SE is a German insurance company with its headquarters at Königinstrasse 107, 80802 Munich. UK Branch office: Plantation Place, 30 Fenchurch Street, London, EC3M 3AJ. Lawshield UK Limited is authorised and regulated by the Financial Conduct Authority (FCA). Authorisation details can be checked on the FCA's register at [www.fca.org.uk](http://www.fca.org.uk). Great Lakes Insurance SE, UK Branch, is authorised by Bundesanstalt für Finanzdienstleistungsaufsicht and subject to limited regulation by the Financial Conduct Authority and Prudential Regulation Authority. Details about the extent of their regulation by the Financial Conduct Authority and Prudential Regulation Authority are available on request.

<sup>6</sup> Finance is available to 18s and over, subject to status. Terms and conditions apply. Volkswagen Finance.



# The T-Roc

Volkswagen Information Service. Telephone: 0800 333 666  
Internet: [www.volkswagen.co.uk](http://www.volkswagen.co.uk)  
© Volkswagen Group United Kingdom Limited 2019.  
Issue: 1 February 2019.



[facebook.com/VolkswagenUK](https://facebook.com/VolkswagenUK)



[@UKVolkswagen](https://twitter.com/@UKVolkswagen)



[youtube.com/user/ukvolkswagen](https://youtube.com/user/ukvolkswagen)



[volkswagen\\_uk](https://volkswagen_uk)