



# VOLVO V90







**Contents**

---

Volvo V90.....	8
Exterior design.....	10
Interior design.....	12
Versatility.....	16
Sensus.....	18
IntelliSafe.....	24
Drive-E.....	32
Chassis.....	36
Ownership.....	38
<b>Your choice</b>	
Trim levels.....	40
V90 Inscription.....	42
V90 R-Design.....	46
V90 Momentum.....	50
V90 Cross Country.....	54
V90 Cross Country Volvo Ocean Race.....	60
Exterior colours.....	64
Interiors.....	66
Wheels.....	68
Accessories.....	70
Powertrains.....	78
Lifestyle Collection.....	84









# WHY WE INNOVATE.

For us, innovation is about people. Every car, every technology and every design is the result of our passion to make life easier and better for you.

Our starting point is always research – because by understanding you, your needs and your desires, we can create products that truly work for you. Innovating with people in mind allows us to help solve some of the complexities and challenges of modern life, making it less complicated and more enjoyable.

To do this we're thinking big, making huge strides to shape the future of motoring. We have made a unique commitment that, from 2019, every new car we launch will feature an electric motor, creating one of the most diverse electric ranges of any car maker. We're the first major premium car company to do so, paving the way for a new chapter in the history of the automobile.

We're also continuing our journey of tech innovation and leadership in connectivity. Our vision is that by 2025, every new Volvo sold will help its owner reclaim one week of quality time per year. This will be possible through our innovations around connectivity and car access, including 'shared key' features that will save you time and revolutionise how you interact with your car.

Of course, we also have a progressive vision for the future of safety. We believe that, by 2020, no one should be killed or seriously injured in a new Volvo car. We will achieve this through our unique approach to safety, which builds on real-life research to create innovations that better protect people.

Collectively, this is what drives us forward as a company and is why we're investing in the future, a future where innovation is designed around you.





## **BEAUTY AND FUNCTION IN HARMONY**

*A sophisticated estate, built for the way you live.*

**We created the V90** for a world that demands versatility, without compromising elegance and sophistication. From the exterior's clean, taut lines to the spacious, light-filled cabin, this is an estate car that combines powerful good looks with everyday practicality.

In the V90, technology supports you without overwhelming you. From advanced driver assistance technologies that make driving both safer and more enjoyable to the T8 Twin Engine with plug-in hybrid technology, each of the advanced features has been engineered to improve every journey.

Underneath the crisply sculpted exterior lies a chassis that delivers the perfect combination of precise handling and welcome comfort.

Smart technology keeps you seamlessly connected with the car and the world around you. And with the very latest in safety innovations, you will travel safe in the knowledge that your V90 will help looking out for you, your passengers and other road users.

This is the Volvo estate reinvented, built to enhance every day.

**Inscription**

711 Bright Silver metallic |  
20" 8-Spoke Silver/Diamond Cut, 214



**Distinctly Volvo.** You'll recognise the V90 as a Volvo from any angle. The bold lines convey solidity and strength, the details are subtle and distinctive. It's the combination of these qualities that makes the V90 a truly modern Volvo.

The rake of the rear window adds dynamism and the tall LED taillights, with their slender vertical shape, are both contemporary and classically Volvo. An estate with style and presence and a car to be proud of.



**Inscription**

711 Bright Silver metallic |  
20" 8-Spoke Silver/Diamond Cut, 214





**Fine Nappa Leather Perforated**  
Blond in Blond/Charcoal interior WC00 |  
Linear Walnut inlay | Tailored dashboard  
(Not available in UK)



## **DESIGNED FOR CONTROL**

*Precision and accuracy at every touch.*

**From the moment** you settle into the sculpted driver's seat you're in control. You sit low in the V90, with the 9-inch centre display with touch screen angled towards you to create the feeling of a cockpit. You're surrounded by an environment where beautiful materials and advanced technology meet, creating a cabin that looks great and works perfectly.

The exceptional craftsmanship enhances the feeling of precision. Take the air vents, for example. With a metal-finish vertical strip and distinctive diamond-pattern surfaces for the control knobs they are beautiful to look at and a pleasure to use. In the V90 every component moves with the accuracy afforded by fine engineering. It is a car that gives you control over every part of your journey.





## LIGHT. SPACE. LUXURY.

**Travel first class** in every seat, every day. Because when you're in the V90 you're in your own private lounge, a place where comfort and luxury combine with technology and craftsmanship.

It starts with the front seats. Sculpted to complement the human form, they provide superb support and a huge range of adjustment, so everyone can find the ideal seating position. Optional ventilation and massage functions provide even greater comfort.

The shape of the backrests increases legroom for passengers in the rear. The rear seats are designed to cosset and support, while optional four-zone climate control, retractable rear sun blinds and individually controlled heated outer rear seats add to the sense of luxury.

A panoramic glass sunroof that floods the entire cabin with light is a design highlight. Tinted to prevent glare, this optional feature opens to create an even more airy feel, and can be closed remotely using the remote key fob.

At night the cabin glows with the warmth of its interior lighting, welcoming you into the car. The optional high-level illumination lighting package includes backlit door handles and illuminated tread plates,

as well as additional interior lighting that enhances the exclusive ambience.

Our CleanZone technology helps ensure a healthy interior environment and clean cabin air. It filters dust, pollen, particulates and odours while monitoring the air quality and closing the intakes if pollutant levels rise too high. It happens automatically – all you need to do is set the temperature you want and the V90 does the rest. With the four-zone climate control, rear seat passengers can choose their own settings using a dedicated touch screen. It also includes an air-conditioned glove compartment that keeps its contents cool.

The clever design and versatile interior layout make your life easier. The shape of the load compartment means it's easy to fit in awkwardly shaped objects, and a single touch on each of the rear seats allows you to fold them for a longer, completely flat load space. For the power operated tailgate there's an optional hands-free function, so you don't have to put down what you're carrying to open it. In the V90, technology and convenience go hand in hand.



In the driver's seat you're in charge. Control functions such as navigation and entertainment from the steering wheel buttons, while the optional 12-inch driver display keeps you informed.



Every element of the cabin is crafted to make form and function one. The door handles can be backlit, making them easier to find in the dark.



Beautiful, natural materials such as Linear Walnut complement the car's advanced technology, creating a uniquely contemporary look.

## READY FOR EVERY OCCASION.

*A car that fits your life – all of it.*

**Smart versatility makes** every day easier and allows you to make more out of every moment.

The shape of the load compartment makes the V90 easy to load, with the rear seats folding at the touch of a button to create a longer, completely flat load space. You can do this from inside the load compartment so you don't have to open the rear doors to fold the seats. The through-loading hatch means you can carry long items such as skis without folding the seats.

The power-operated tailgate has a hands-free function, so if your hands are full you don't have to put down what you're carrying to open it. Just move your foot under the rear bumper to automatically open and close the tailgate.

To make your V90 even more useful, add extra equipment from our range of load compartment accessories. From dividers that split the compartment in two so you can carry two pets (or a pet and luggage) to a steel grille that provides a sturdy barrier between load and passenger compartment, there's an accessory for every occasion.





## **STAY CONNECTED AND IN COMMAND.**

**We create technology** to serve you and make life easier. Everything that's complicated or doesn't add to your experience is removed.

You control your Volvo intuitively and easily. And seamlessly connected with the car and the world around you, you're in command of every aspect of your journey.

Instead of a multitude of physical buttons, you find a large, 9-inch centre display with touch screen. It's as easy and straightforward to operate as your smartphone, with bold, clear graphics so you can keep your attention on the road. The touch screen blends seamlessly with the car's clean interior design, and is easily operated. You can even operate it wearing gloves.

Essential driving information is clearly presented in our 12.3-inch driver display. It adapts to your needs, preferences and surrounding light, so information is always shown on your terms.

For even better control, our head-up display projects vital driver information at a comfortable view distance. It looks like the graphics hover in front of the car, which allows you to stay informed without taking your eyes off the road.

Your Volvo also listens to you. Keep both hands on the steering wheel and speak naturally: our voice control will carry out your command to operate climate control, navigation, entertainment and your smartphone.

In a Volvo, you and your car act as one.





#### Sensus Navigation

Let Sensus Navigation guide you, inform you and help you find the best route. Road directions are clearly shown in the driver display, centre display and head-up display. Touch screen controls allow you as well as your passenger to operate the system conveniently and safely. Or talk naturally to your Volvo, and let our voice control carry out your commands while you can keep full attention to traffic. With the Volvo On Call app, you can also send the destination to your car before you go. And helping to save time, our in-car navigation apps can help you find and pay for parking, share your location with friends or simply find the best coffee in town. If you drive our T8 Twin Engine plug-in hybrid, the navigation system can also help you optimise the use of pure electric power all the way to your destination. Free life-time map updates ensure your navigation system is always up to date.

## FEEL THE MUSIC.

**Inside the cabin** of your Volvo you can enjoy an audio system designed to put you closer to the music you love, wherever you're seated.

All our audio systems are tailored to the acoustics of your Volvo. Our audio philosophy is very simple: it's all about the soul of music, not the number of speakers or watts. And together with the audio specialists at Bowers & Wilkins and Harman Kardon®, we have created some of the best-sounding audio systems in the class.

Our new audio system, Harman Kardon® Premium Sound, delivers a beautifully balanced, powerful sound. This immersive experience is enabled by 14 hi-fi speakers including an air-ventilated subwoofer that produces a bass sound you'll feel in your body.

If you're truly passionate about music, the Bowers & Wilkins audio system will take the experience to an even higher level. The 19 separate high-end speakers – including a tweeter-on-top centre speaker that minimises acoustic reflection from the windscreen and our unique air-ventilated subwoofer – will surround you with a powerful, pristine sound that feels more spacious and true to life than ever.

It's all about music and making it possible for you to experience it just as it was intended when it was created.



**Harman Kardon® Premium Sound** is developed together with the hi-fi specialists at Harman Kardon®. Powered by a 600W digital amplifier, the 14 speakers are tailored to the acoustics inside your Volvo and deliver a powerful, high fidelity surround sound experience. A unique sound processing software – Dirac® Unison Tuning – optimises the response of each individual speaker as well as the speakers all together to ensure they perform in perfect harmony. So wherever, you're seated, you and your passengers can enjoy a seamless first-class listening experience in all conditions and – not least – an extremely unified and tight bass sound.



**Our Bowers & Wilkins audio system** integrates seamlessly with the cabin architecture of your Volvo to deliver the most realistic immersive sound possible. Innovative audio processing technology with three room modes allows you to recreate the acoustics of a specific room inside your Volvo, bringing you even closer to the music. And to enable extremely low and undistorted bass tones, the air-ventilated subwoofer uses innovative technology that allows it to pulse large amounts of air, actually turning the cabin into one big woofer.



**Smartphone integration.** Use your smartphone in a smarter way. Via Apple CarPlay™ or Android Auto™, you simply integrate the familiar functions and interface of your smartphone\* with the car's centre display. You can enjoy music, make calls and send messages easily via the car's touch screen, steering wheel buttons or voice control.

\*Supports iPhone® (5 or later) or Android smartphones (5.0 Lollipop or later).

**Intuitively connected.** You operate the audio system and hands-free phone easily using the touch screen controls, steering wheel buttons or voice control. Bluetooth® connection also allows convenient streaming of music via your phone. Within easy reach on the car's touch screen, there's also a Spotify® in-car app that makes finding new music quick and easy without you having to connect your phone. Using Volvo On Call, you can also create a wifi hotspot in your car with a stable internet connection for you and your passengers' mobile devices.

# VOLVO ON CALL. ALWAYS THERE WHEN YOU NEED IT.

The Volvo On Call app connects your car with the rest of your world, helping make life less complicated. It's there when you need it, so your car becomes more than just a means of travel – it's your personal assistant.

It can tell you about the best coffee in town and send the destination to your car's navigation system. It knows when you've got appointments, where they are and how to get there. You can use it to make your car ready for the drive to the office, or the drive home, by remotely cooling or heating the cabin (automatic only). It can help you find a parking space, then take you straight to it. You can sync your Volvo On Call app with your calendar, so if you've got appointments it will tell your car where they are and how to get there. And it helps to keep you safe, automatically contacting emergency services if you're involved in an accident and telling them where you are.

Volvo On Call keeps you connected to the things you need. It's always on. Always with you. Always there.



## YOUR DAY MADE EASIER WITH VOLVO ON CALL

*From saving you time in the morning to helping you relax on the way home, Volvo On Call can be an indispensable part of your daily routine.*



### THE PERFECT START

*Before leaving the house, you send your destination to the car's navigation system so it's ready for you to set off. You get in the car which is already warm and defrosted, thanks to Volvo On Call's ability to run the engine remotely (automatic only).*

07.30



### WHERE NEXT?

*A calendar card shows your next meeting. You push a button in the app, sending the address to the car's navigation system.*

11.00

### FIND YOUR CAR

*You've forgotten where you parked, so you use the car locator map to find the street and then use the flash lights function to pinpoint the car.*

12.00







**REMOTE CONTROL COMFORT**

*You set the engine to warm the car interior (automatic only) so it's ready for when you leave the office.*



**READY FOR A NEW DAY**

*A notification reminds you that you've got a meeting in the morning so you send the location to the Sensus Navigation system ready for the morning.*

13.00

17.15

17.45

22.20

**SET UP YOUR HOTSPOT**

*You pick up some colleagues. Using Volvo On Call, you create an in-car wifi hotspot with a strong internet connection for their mobile devices.*

**FIND A RESTAURANT**

*You head for home, not wanting to cook dinner. The Volvo On Call operator sends your dining choice destination to your car's navigation system within seconds.*



## **PILOT ASSIST. DESIGNED TO MAKE DRIVING SAFER AND EASIER.**

**Our latest advances** in supportive driving technologies allow you to enjoy smooth, intuitive driving from standstill up to motorway speeds.

To make driving in demanding traffic less stressful, we created Pilot Assist and Adaptive Cruise Control. This means your Volvo automatically helps you maintain a safe distance from the car in front of you by adapting your speed while helping to keep you centred in the lane by automatically making small steering adjustments. It's intelligent too: using map data from the car's navigation system, the car identifies hills ahead and adapts the speed to help optimise your comfort and safety.

This technology also makes driving in stop-and-go traffic more effortless. Maintaining the set distance, your car follows the car ahead of you and can brake automatically to full stop when needed. And if the car in front just makes a short stop, your car starts following it as it takes off again.

This is driving made safer and easier safe and easy, with the aim to optimise your control, comfort and convenience.

**Please note:** The driver is always responsible for how the car is controlled, the functions described here are only supportive.



## CITY SAFETY TECHNOLOGY. YOUR PRO-ACTIVE PARTNER ON THE ROAD.

With advanced pro-active safety technology we add extra power to your senses and enhance the confident feeling of being in control.

At the heart of our safety technologies is City Safety. By helping you to keep a lookout and brake if necessary, it makes driving more enjoyable while helping to prevent accidents.

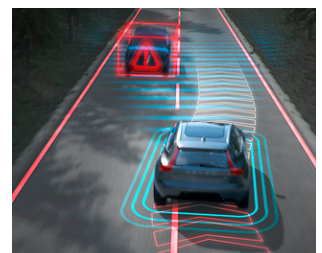
City Safety can identify other vehicles, pedestrians, cyclists and large animals ahead of you, even at night. It warns you if needed and can brake automatically to help you avoid a collision or reduce the impact. And our advanced Oncoming Mitigation by Braking technology – a Volvo safety world first – can detect if there's another vehicle driving towards you can brake automatically to help mitigate the impact.

City Safety is simply your perfect partner: pro-active when it's needed, and staying discreetly in the background the rest of the time.



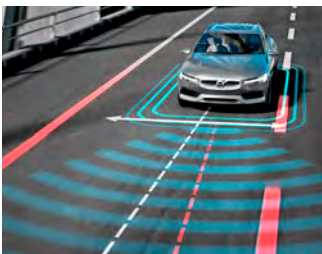
### Oncoming Mitigation by Braking

A Volvo Cars safety world first, this innovation can detect vehicles heading towards you on the wrong side of the road. If a collision can't be avoided, it can brake your car automatically to help reduce the effect of a collision.



### Oncoming Lane Mitigation

Using automatic steering assistance, this system helps you avoid collisions with oncoming vehicles. If you drift across the lane markings in the way of an oncoming vehicle, your car can alert you and gently help steer you back into the correct path.



#### Lane Keeping Aid

If you're about to cross a lane marking unintentionally, the Lane Keeping Aid can gently help steer your car back into its lane. If this is not enough or you keep steering across the lane markings, you'll be alerted with vibrations in the steering wheel.



#### Run-off road Mitigation

Stay safely on the road with this Volvo Cars safety innovation. If Run-off road Mitigation detects you're about to leave the road unintentionally, it can provide steering input and, if necessary, brake support to help guide you back on track.



#### BLIS™ with Steer Assist

BLIS™ can alert you when a vehicle enters your blind spot or approaches fast from behind. If you nonetheless drift into the path of another vehicle, BLIS™ can gently help steer you back into your lane.



#### Active Bending Headlights with Adaptive Shadow Technology

To give you the best view, our Full-LED headlights allow you to drive with high beam on all the time, without dazzling others. It detects road users ahead of you and can automatically shade the part of the high beam that would dazzle them.

## PERFECT PARKING, EVERY TIME.

In a Volvo, you can enjoy smooth parking.

Our navigation system gives you access to an in-car app that helps you find the nearest free parking space and even pay for it. When parking, you're supported by front and rear park assist functions that alert you if there are obstacles in your way. And by adding our 360° camera, you get a detailed bird's eye view of the area surrounding your Volvo – a great help when you reverse or manoeuvre in confined areas with impaired visibility.

If you want, our Park Assist Pilot can park the car for you. It measures the parking space, and if the space is at least 1.2 times the length of your car it can park by taking over the steering. Park Assist Pilot handles both parallel and perpendicular parking, and can also assist when leaving a tight parallel parking space.

And to make it easier when you reverse out of a parking space, Cross Traffic Alert helps you keep a lookout on approaching vehicles in your blind sectors.



### 360° camera

The 360° camera uses images from discreetly mounted cameras to create a bird's eye view of your car and its closest surroundings. In the centre display, you can see obstacles all around you, which makes it easier to park and manoeuvre in tight spaces.









## PROTECTING WHAT'S MOST IMPORTANT.

**Protecting you and** your passengers has always been at the heart of every car we make, and the advanced safety features in your Volvo are the result of decades of passionate innovation.

In a Volvo, it's the interaction between all the safety features that determines how efficiently the car will protect you and your passengers in a collision. Everything, from the design of the seats to the surrounding safety cage and the safety belts and airbags, works together to help minimise the strain on all occupants and maximise protection.

The front seats not only provide world-class comfort. They are also designed to protect you in the event of an impact. Our unique whiplash injury protection helps protect your back and neck if your car is hit from behind. And in a Run-off road scenario, the energy-absorbing front

seat structure will help protect your spine in a hard landing, should the car become airborne.

Your Volvo can even sense and prepare for impact. The optional prepared front safety belts tighten automatically if the car detects that a collision is likely, to ensure you're in the safest position should one occur. And in the event of an accident, your Volvo can automatically contact emergency services using Volvo On Call and communicate the car's location so that you can get help as quickly as possible.

It's this range of safety technologies and attention to detail that makes your Volvo a safe place to be.



### Crash-absorbing front seats

The sculpted front seats in your Volvo are more than just beautiful to look at. Their unique structure helps to absorb vertical impacts, helping to protect your spine if the car lands heavily after leaving the road. It's another example of how we make every part of a Volvo work harder for your safety.

### Volvo safety cage

The passenger compartment uses a high percentage of ultra high-strength boron steel to create a protective cage around everyone inside the car, while front and rear deformation zones help dissipate the crash energy. The safety belts and airbags work together to cushion you and your passengers in a controlled fashion.



### Child safety

At Volvo Cars we've spent decades continually researching and improving child safety. Our unique approach includes creating and carrying out tests based on real-life traffic situations, as well as testing our child seats alongside our cars. With our latest range of child seats, we offer unparalleled protection.

## ENJOYING MORE, USING LESS.

**With the perfect** balance between performance and efficiency, every Volvo powertrain gives you a great drive with low fuel consumption and reduced emissions.

The combination of lightweight, low-friction engine design and advanced boosting technology allows you to enjoy outstanding performance and a smooth, agile driving experience. Smaller engines lose less energy through friction so they can make every drop of fuel work harder to minimise emissions. We've used low-friction components to make them run smoother and more efficiently. Reduced size and weight also frees up interior space and contributes to the car's dynamic handling.

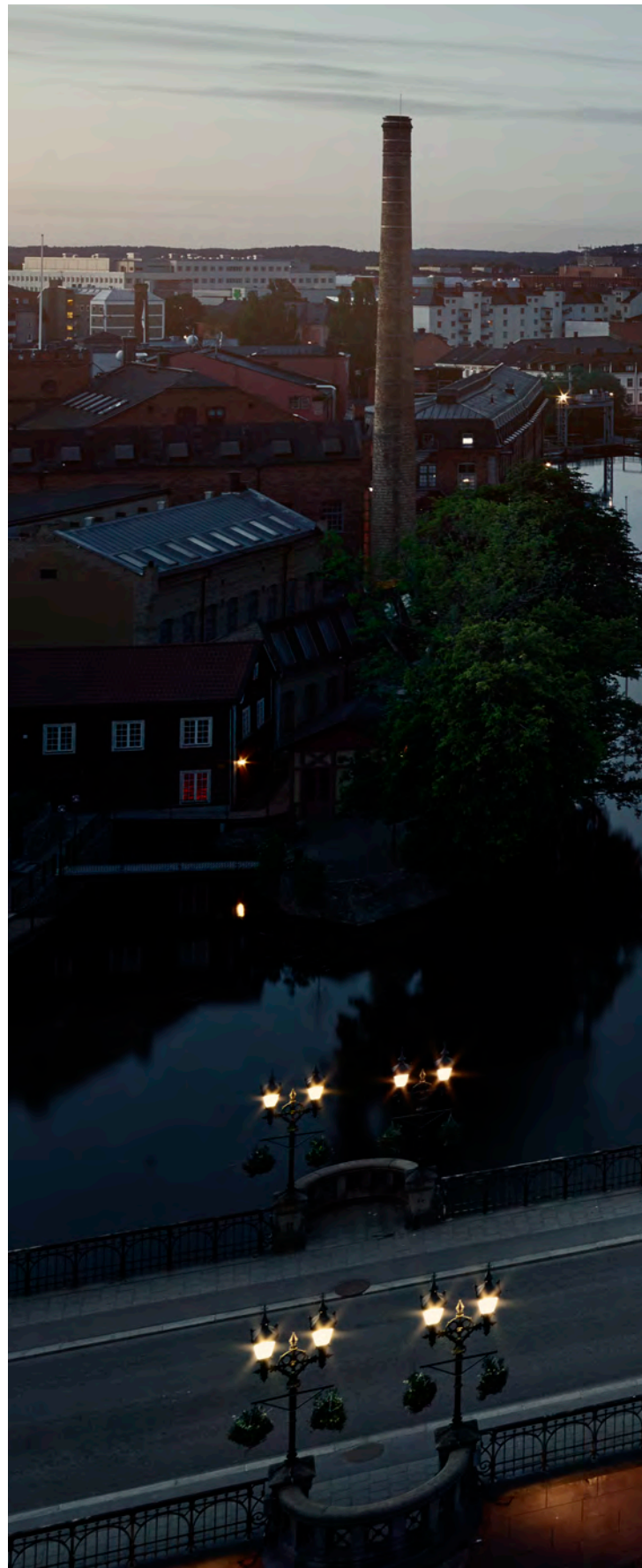
This innovative approach also makes driving fun. Choosing the 235 hp D5 diesel powertrain, you can enjoy PowerPulse. At lower speeds and from standstill, it activates the turbocharger as soon as you press the accelerator to give an instant boost of acceleration. And if you go for our 310 hp T6 petrol powertrain, a combined supercharger and turbo give you instant power at all revs. It's Volvo technologies like this that allow you to experience the power of a much larger engine from a compact four-cylinder, so you get the perfect mix of power and efficiency.

All our powertrains are quiet and smooth to give you a relaxing journey. In our diesel engines, for example, the i-ART injection technology precisely meters exactly the right amount of fuel for each cylinder to make the engine run more smoothly while using less fuel. And to help minimise health-impairing emissions, the latest generation emission control with Selective Catalytic Reduction reduces emissions of nitrogen oxides (NO<sub>x</sub>) by up to 90%.

The precise eight-speed automatic gearbox makes the most of each engine's potential. Designed to minimise power loss and maximise performance, the gearbox will always select the right gear for whatever is coming next, or you can choose to change gear yourself in manual mode. To help you drive more efficiently, select Eco mode and the V90 recalibrates the drivetrain for the lowest possible fuel consumption and emissions. The coast function disconnects the engine from the automatic transmission when you release the accelerator at speeds above 40mph so it isn't being used to slow the car.

The powertrain can also adapt to the mood you're in. Select Comfort, Eco, Dynamic or Individual mode with our drive mode control, and the powertrain, steering and optional active chassis adapt instantly to your preferences.

Whichever powertrain you choose for your Volvo, you will enjoy the benefits of responsive power and uncompromised efficiency – simply a great drive.





## POWER WITHOUT COMPROMISE.

With advanced powertrain technologies, such as electrification, we aim to provide you with an unrivalled driving experience. The high-performance T8 Twin Engine AWD with plug-in hybrid technology allows you to enjoy an involving drive as well as cutting CO<sub>2</sub> emissions.

The combination of a high-performance four-cylinder petrol engine and a powerful electric motor offers the power and performance of a much larger engine, but use much less fuel. The 303hp petrol engine drives the front wheels and the 87hp electric motor powers the rear, giving instantaneous acceleration and on-demand all-wheel drive.

With just the electric motor powering the car, you benefit from silent, emissions-free driving and an electric-only range ideally suited to daily commuting.

Four different drive modes offer precise control over the car's powertrain. Hybrid mode uses petrol and electric power for the best balance of power and efficiency while Pure uses the electric motor only for zero-emission driving. Power combines the full output of the petrol engine and the electric motor for the best performance,

while AWD switches to full-time all-wheel drive. Blend your favourite elements of each mode and create a mode that's tailored to your needs by selecting Individual.

Controlling this technology is intuitive and straightforward. A beautiful machined-alloy roller switch allows you to flick easily between modes. And if you've chosen our Active Four-C Chassis your car automatically selects the best settings to complement the drive mode, allowing you to enjoy the drive while your Volvo does the work.

Charging the battery is quick and easy. Drive the car and the battery charges itself, thanks to regenerative braking. If you need to top it up, plug it into the mains supply. Adding to your convenience, the Volvo On Call app shows battery and charge status. It also allows you to remotely schedule battery charging using a timer function.

The T8 Twin Engine AWD gives you the best of both worlds. Power without compromise.



Made from Orrefors® crystal glass, the gear selector in the T8 blends traditional Swedish materials with advanced design and technology.



The battery's location helps give your Volvo a low centre of gravity, so it is stable, sure-footed and comfortable while not affecting the car's load space.



Plug your T8 Twin Engine into our specially-designed wall box at home and charge it conveniently and safely. Fully charged, the battery will provide enough electric-only power to cover the average daily commute of many people.

**T8 Twin Engine AWD | Inscription**  
707 Crystal White pearl | 20" 10-Spoke  
Silver/Diamond Cut alloy wheels, 1030



## DRIVEN TO PERFECTION.

**We designed the V90** from the ground up for precision and comfort. That's why the sophisticated suspension gives you the best of both worlds. Accuracy and precision when you want it, backed up by comfort and technology to make every drive enjoyable.

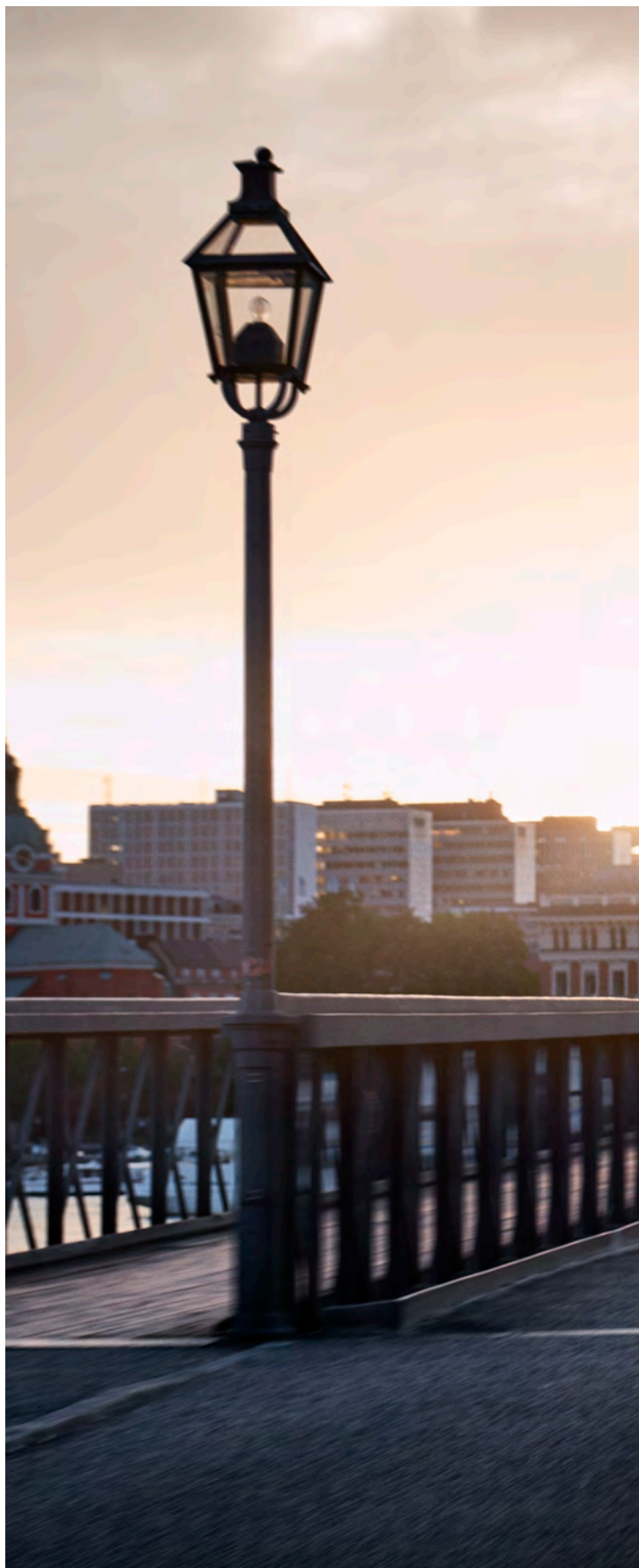
Double wishbone front suspension works in harmony with integral link rear suspension to give you precise control over the car. With our Active Four-C Chassis with rear air suspension, your V90 will compensate for loads while adapting the chassis to the road and driving conditions for an even better ride. Advanced driver aids such as stability control and understeer control logic keep the V90 stable, improving the way it handles corners. All-wheel drive models provide even greater reassurance on demanding roads.

You can choose between four drive modes that allow you to tailor the car's behaviour to your mood and find the perfect setting for the road you're on. Altering the engine, gearbox, accelerator and steering response changes the way the car behaves and, with the optional active chassis with rear air suspension, how it rides and handles. Gearshift paddles increase your control further.

And when you come to a stop, the V90 helps you to get going again. Hill Start Assist makes pulling away on an incline effortless by holding the car on the brake until you press the accelerator. Auto Hold keeps the brakes on after you've released the pedal, so you can let the car do all the work in stationary traffic.



Discover superior comfort and handling with our optional active chassis with rear air suspension. It soaks up poor road surfaces and keeps the ride height constant so the car responds how you want it to. Active chassis technology allows you to customise the way the V90 rides and handles.





## **SIGN UP TO THE FUTURE.**

**Volvo Cars' approach** to the future of the car experience is known as Care by Volvo.

Care by Volvo is designed to remove the financial investment usually associated with car ownership while still meeting your changing needs through a fixed monthly payment. This means that Volvo Cars takes full responsibility as the owner of the car throughout its lifecycle – from production to final recycling, while at the same time providing you with a seamless user experience.

It's as easy as can be. Decide which car and offer you would like, order it and drive. Care by Volvo includes all regular servicing, maintenance, insurance and tax.

Care by Volvo is the future of the car experience. It's like a phone subscription. You always have the latest technology and powertrain systems in the latest Volvo models, as we move from mild- and plug-in hybrids towards fully electric Volvo cars.







VOLVO V90

**Inscription**  
711 Bright Silver metallic |  
20" 8-Spoke Silver/Diamond Cut, 214





**Volvo V90 Inscription**  
The highly sophisticated expression  
of Swedish luxury.



**Volvo V90 R-Design**  
The thrill of a sporty drive, characterised  
by style, responsiveness and control.



**Volvo V90 Momentum**  
The premium look and ambience.



**Volvo V90 Cross Country**  
The rugged yet sophisticated V90 Cross Country,  
built to enhance your every adventure.



**Volvo V90 Cross Country Volvo Ocean Race**  
Inspired by one of the world's toughest yacht race, combining  
comfort and smart utility for a unique experience.

## CREATE THE VOLVO V90 OF YOUR CHOICE.

Our approach in everything we do is to always put people first. This also includes allowing you the freedom to create a Volvo that perfectly matches your style and personality.

Already as standard, your Volvo V90 is designed to meet your demands on style, comfort and safety. And to ensure you get your Volvo estate exactly as personal as you want it, you have several different design expressions to choose from – each with a distinctive

style and character: the luxurious V90 Inscription, the sporty V90 R-Design, the premium V90 Momentum and the adventurous V90 Cross Country. Or for a Volvo that takes your adventures to the next level: the unique V90 Cross Country Volvo Ocean Race Edition.

Whatever you prefer, you can rest assured there's a Volvo V90 for you. Read on, and see what your V90 will look like.



**Inscription**  
711 Bright Silver metallic |  
20" 8-Spoke Silver/Diamond Cut, 214



## Inscription

### A HIGHER GRADE OF LUXURY.

We created the exclusive V90 Inscription to meet your highest expectations on Swedish luxury. It's a highly personal expression that evokes a strong sense of elegant refinement. Each detail is carefully selected to give you and your passengers a sophisticated and invigorating experience. Distinguished exterior design cues enhance the luxurious look and feel of the V90, while the meticulously crafted interior gives you ample room for a relaxed driving experience. The V90 Inscription epitomises our proud heritage of human-centric design. And when it comes to intelligent luxury imbued with distinctive style and fresh thinking, the V90 Inscription is in a class of its own – just like you.

The highly sophisticated Volvo V90 Inscription with its subtle jewellery touches and beautifully crafted wheels proudly expresses the essence of contemporary Swedish luxury. On the inside, you are surrounded by genuine materials and fine craftsmanship. It's a sensory experience, further enhanced by the Comfort seats in Fine Nappa leather, our Tailored dashboard and Linear Walnut decor – all to make the Volvo V90 Inscription your own personal statement of luxury.



Dual integrated tailpipes and bright decor trim add to an elegant and powerful impression.



Inscription front grille in elegant chrome finish and the signature headlights with LED illumination.

Small details make Inscription, such as the high gloss chrome frames around the door handles.



The lower door bright deco moulding with Inscription logotype.

Our Tailored dashboard with contrasting stitching and exclusive Linear Walnut wood decor enhance the luxurious interior ambience, while the intuitive 12-inch driver display with four graphic modes and the 9-inch centre display with touch screen puts you in the centre of action.



The power-operated Comfort seats with Fine Nappa Leather upholstery and the exclusive Linear Walnut genuine wood decor inlays add to the sensory experience of contemporary luxury.



The exclusive Inscription remote control is clad in the same Fine Nappa Leather as the seat upholstery in your Volvo V90 Inscription – an excellent example of thoughtful Scandinavian craftsmanship and clean design.



Drive mode scroll wheel in diamond patterned metal finish and the Linear Walnut decor inlay.

## RDESIGN

### INSPIRED BY SPORT.

If you love to drive, the Volvo V90 R-Design is for you. With athletic styling and precise control, R-Design captures the thrill of a sporty driving experience. A wealth of distinctive design details raises the dynamic soul of your Volvo estate and gives it a sportier, more powerful road presence. It's a design expression that catches the eye from every angle and hints at the promise of an amazing drive, every time. And you can rest assured that the Volvo V90 R-Design will deliver.

You can feel it right from the moment you take your position in the sculpted R-Design driver seat – everything is there to inspire and support your driving.





**R-Design**

720 Bursting Blue metallic | 21" 5-Double Spoke  
Matt Black/Diamond Cut alloy wheels





The Volvo V90 R-Design is characterised by distinctive styling and a powerful road presence. Sporty exterior R-Design details leave no doubts about the intention of your V90 R-Design. On the inside, sculpted R-Design seats, Metal Mesh decor, Charcoal headlining and our exclusive Tailored dashboard give the cabin a sporty, cockpit-like feel. A lowered sport chassis helps ensure you're in control without compromising ride comfort.

Enjoy the ultimate R-Design experience with our 21-inch Matt Black/ Diamond Cut aluminium wheels (optional) and the lowered sport chassis with adjusted anti-roll bars, stiffer springs and mono-tube design rear dampers for sportier handling and less roll when cornering.



R-Design door mirror caps in contrasting silver finish and stylish Silk Metal window trim highlight the sporty look of your V90 R-Design.



The glossy black R-Design grill with frame in Silk Metal finish and unique glossy black lower outer grilles add to the sporty character of your V90 R-Design.

Dual integrated end pipes for a distinctive road presence.



The Carbon Fibre decor adds to the sporty, hi-tech ambience inside your V90 R-Design (optional).



The R-Design steering wheel in Perforated Fine Nappa Leather with gearshift paddles and the 12-inch driver display with four graphic modes.

The R-Design interior featuring the R-Design steering wheel, gear shifter and gaiter in Perforated Fine Nappa Leather with contrasting stitching, Contour seats with exclusive Fine Nappa Leather upholstery (optional), Carbon Fibre decor inlays (optional) and Tailored dashboard and upper door panels with light Amber stitching.



### Momentum

714 Osmium Grey metallic | 21" 10-Open Spoke  
Turbine Tinted Silver Diamond Cut Alloy wheels |  
Exterior styling with chrome inserts



## VOLVO V90 MOMENTUM. THE PREMIUM TOUCH.

The Volvo V90 Momentum is a confident expression of sophisticated style and liberating versatility, a car where progressive design and intuitive technology create a premium experience. Designed to be your premium Swedish estate, the V90 Momentum will meet your demands on style, comfort, versatility and design.

The V90 Momentum is twisted towards a distinctive, contemporary approach. Our signature design LED headlights, bright exterior details and elegant wheels contribute to the car's premium appearance. And on the inside, you and your passengers can enjoy fine materials, elegant design and a host of comfort-enhancing amenities.



The Volvo V90 Momentum embodies the essence of confident Scandinavian design. Bright exterior design cues add to the car's premium look, while the LED headlights highlight the distinct presence of your Volvo estate. Inside the V90 Momentum, you and your passengers are surrounded by thoughtful comfort. The interior ambience is further enhanced by Iron Ore aluminium decor and aluminium tread plates.

Park Assist supports you when reversing and the chrome dual end pipes add a dynamic finish.



Signature LED illumination, the high gloss black grille, bright deco exterior details, bright aluminium roof rails and 18-inch 10-spoke Turbine Silver Bright alloy wheels (optional) contribute to the both powerful and elegant appearance of the V90 Momentum.



The integrated bright aluminium roof rails add an extra touch of exclusivity to your V90 Momentum.

Sensus Connect includes the large 9-inch centre display with touch screen, voice control, USB input, internet maps and our 330W High Performance audio system with 10 excellent speakers and Bluetooth® audio streaming.



The standard 12.3-inch driver display allows you to choose between different visual appearances. To provide optimum visibility, the display's brightness automatically adapts to exterior light conditions.

The Comfort seats provide excellent body support and are upholstered in Leather for a premium look and feel.





**T6 AWD | V90 Cross Country**  
 722 Maple Brown metallic | 20" 10-spoke  
 Black Diamond Cut alloy wheels, 226



## VOLVO V90 CROSS COUNTRY. YOUR SOPHISTICATED ADVENTURE AWAITS.

A capable all-road car, the V90 Cross Country is built to enhance your every adventure. Clean, taut lines and rugged Cross Country details create a powerful look that conveys a strong sense of capability – with all the practicality and versatility of the Volvo estate built in.

The V90 Cross Country is packed with innovative technology for sophisticated travelling on all roads. All-wheel drive, increased ground clearance and an advanced chassis help you cope with rough roads, challenging weather and tough conditions.

No matter what's going on outside, the V90 Cross Country is a sanctuary inside. The spacious, light-filled cabin is made from the finest materials and constructed with the care and attention provided by Swedish craftsmanship.

Designed to make every journey an adventure, the V90 Cross Country is a place where you can relax in comfort, where technology enhances your drive and opens up a world of destinations.

## ALL-ROAD CAPABILITY OPENS UP YOUR WORLD.

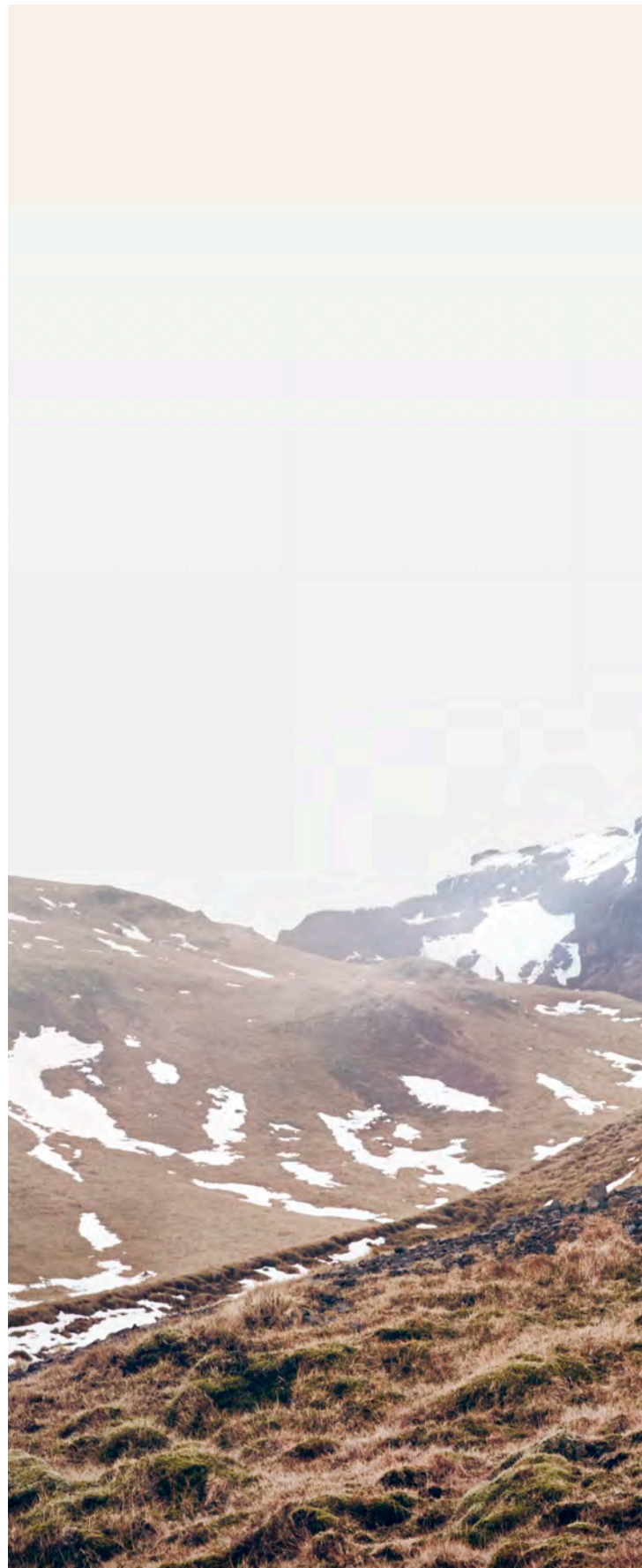
The **V90 Cross Country** is a true all-road vehicle, with the technology to take you further. So the limits of your adventure don't have to be defined by the limits of your car.

Our sophisticated all-wheel-drive system keeps the V90 Cross Country moving when roads get rough or conditions deteriorate. It automatically sends the right amount of power to the wheels that need it the most, so when the road runs out you can keep going. With its increased ground clearance and large wheels, this car has the capability to take you wherever you want to go. Descending steep hills is made straightforward with Hill Descent Control, which carefully applies the brakes to keep the car from moving too quickly or sliding.

You can tailor the way the V90 Cross Country behaves off road by selecting Off-road mode from the Drive Mode menu. It makes the car easier to drive on difficult surfaces such as wet grass, mud and loose gravel by changing the way the engine delivers its power and recalibrating the car's drivetrain so you have more control at slower speeds. On uneven ground, the Active Four-C chassis with rear air suspension comes into its own, taking bumps and ruts in its stride. When the road becomes a challenge and the weather becomes unpredictable, the V90 Cross Country gets you where you want to go. In comfort.



Discover superior comfort and handling created by our optional active chassis with rear air suspension. It soaks up poor road surfaces and keeps the ride height constant so the car responds how you want it to. Active chassis technology allows you to customise the way the V90 Cross Country rides and handles.





The Volvo V90 Cross Country is a car that's sophisticated, tough and practical. Its large wheels and increased ground clearance give you confidence on any road, and front and rear skid plates and Charcoal body cladding add a rugged look. On the inside, you can relax on the way to your adventure in a meticulously crafted interior with a superior finish and detailing wherever you look. Leather seats and unique Black Walnut decor add to a sumptuous look and feel.

Signature design LED illumination headlights, the unique high gloss black Cross Country grille, a front skid plate and bright aluminium roof rails contribute to the both powerful and elegant appearance of the V90 Cross Country.



Large wheels, increased ground clearance, high gloss black side window trim and lower body parts and wheel arch extensions in contrasting Charcoal add to the rugged character of the V90 Cross Country. Here shown with optional 20-inch Black Diamond Cut alloy wheels.

At the rear, the integrated stainless steel dual tailpipes, the rear skid plate and the Charcoal bumper with embossed Cross Country logotype add to the car's elegant yet rugged look.



The power-operated Leather seats with unique Cross Country stitching and adjustable seat cushion extensions together with unique Black Walnut genuine wood decor inlays and the Tailored dashboard add to the sensory experience of contemporary luxury.



Unique decor inlays in genuine Black Walnut add to the exclusive ambience inside your V90 Cross Country.



The 12.3 DIM-inch driver display for Cross Country allows you to choose between different visual appearances. To provide optimum visibility, the display's brightness automatically adapts to exterior light conditions.



Our optional Bowers & Wilkins audio system with 19 high-end speakers is created to deliver the most realistic immersive sound possible.



**T6 AWD | V90 Cross Country Volvo Ocean Race**

707 Crystal White pearl |  
20" Volvo Ocean Race alloy wheels



## V90 CROSS COUNTRY VOLVO OCEAN RACE. TAKE YOUR ADVENTURE TO THE NEXT LEVEL.

From one of the world's toughest yacht race comes the inspiration for a car that is the perfect companion to your adventure. The Volvo V90 Cross Country Volvo Ocean Race combines smart utility and comfort to create a unique kind of luxury – the freedom to explore.

With a combination of colour and trim you won't find anywhere else and practical extras such as load nets, a water-resistant storage bag and a washable load compartment floor, this is a car with the capability to match its looks.



The Kaolin Grey body cladding together with Flare Orange accents contrast beautifully with the high-gloss Crystal White body colour. The stainless steel skid plates, the Cross Country side scuff plates and the large five-spoke 20-inch alloy wheels in Silver finish add to the car's bold, adventurous nature.

The Volvo V90 Cross Country Volvo Ocean Race is instantly recognisable, wherever your adventure takes you. An exclusive Crystal White body colour with contrasting design accents combined with unique 20-inch wheels create a distinctive impression. The sporty contrasting Volvo Ocean Race theme continues inside the car, with unique Fine Nappa Leather/Textile seats, Carbon Fibre decor, Tailored dashboard and a host of smart, convenient features.

At the rear, the lower bumper in Kaolin Grey with stainless steel tailpipes integrated in the rear skid plate with Flare Orange moulding confidently manifests the exclusive Volvo Ocean Race character.



The large five-spoke 20-inch alloy wheels in Silver finish have been designed specifically for the V90 Cross Country Volvo Ocean Race, and have a diamond-cut finish on the faces.

Inspired by exclusive yachts, the unique load compartment floor in durable material with metal stripes provides an elegant and adventurous look. And with the bumper dirt protection mat, you easily turn the tailgate opening into a comfortable seating area.



The Flare Orange leather piping in the door side armrests subtly matches the other interior design details. For an enhanced sense of exclusivity, the tailored upper door panels and dashboard feature contrasting Blond seams.



Leather gear shifter gaiter with contrasting seams and decor panels in genuine carbon fibre create a high-tech look, while the finely crafted leather-clad tunnel console sides add to the exclusive interior ambience.



For a sporty look, the sculpted, supportive power operated Contour seats feature a unique combination of Fine Nappa Leather and Graphite Open Grid Textile upholstery with Flare Orange piping. The seats also include a protective seat cover.

The Flare Orange interior design details, such as the safety belts, add a contemporary look that contributes to the unique experience inside the V90 Cross Country Volvo Ocean Race.



Every time you open the front door, the engraved aluminium instep plates give you an illuminated welcome. Unique Charcoal textile mats with Flare Orange piping perfectly complement the Volvo Ocean Race style. Made from 100% recycled nylon, including abandoned fish nets, recovered from the ocean, these mats also make a strong statement about the Volvo Ocean Race's environmental commitment around ocean plastics.

## EXTERIOR COLOURS.

Our wide range of exterior colours allows you to create the Volvo V90 that best reflects your style and preferences. Available in different

variations, each colour imbues your Volvo estate with a sense of luxury and presence.



**614**  
Ice White



**707**  
Crystal White pearl



**711**  
Bright Silver metallic



**477**  
Electric Silver metallic



**721**  
Mussel Blue metallic



**720**  
Bursting Blue metallic  
(R-Design only)



**724**  
Pine Grey metallic



**717**  
Onyx Black metallic



**019**  
Black Stone



**723**  
Denim Blue metallic



**467**  
Magic Blue metallic



**714**  
Osmium Grey metallic



**492**  
Savile Grey metallic



**722**  
Maple Brown metallic



**719**  
Luminous Sand metallic

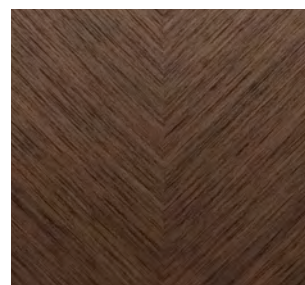


**612**  
Passion Red  
(R-Design only)



Leather, Comfort seat,  
Amber in Charcoal interior, RA20

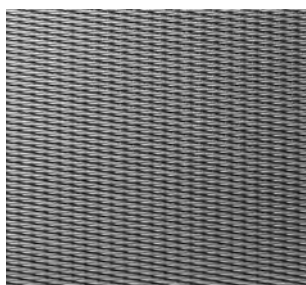
Linear Walnut



## INTERIORS.

The interior of the Volvo V90 is crafted with you at the centre of attention. Every detail, every line, every shape is testimony to our designers' pursuit to create a space in which you feel relaxed and in complete control. Choose between two seat variants: the lavish Comfort seats or the sportier Contour seats. The interior is available in many colour, upholstery and decor trim combinations – including Blond or Charcoal headlining – to suit your preferences.

Leather Fine Nappa Perforated,  
Comfort seat ventilated, Maroon Brown  
in Charcoal interior, RC30



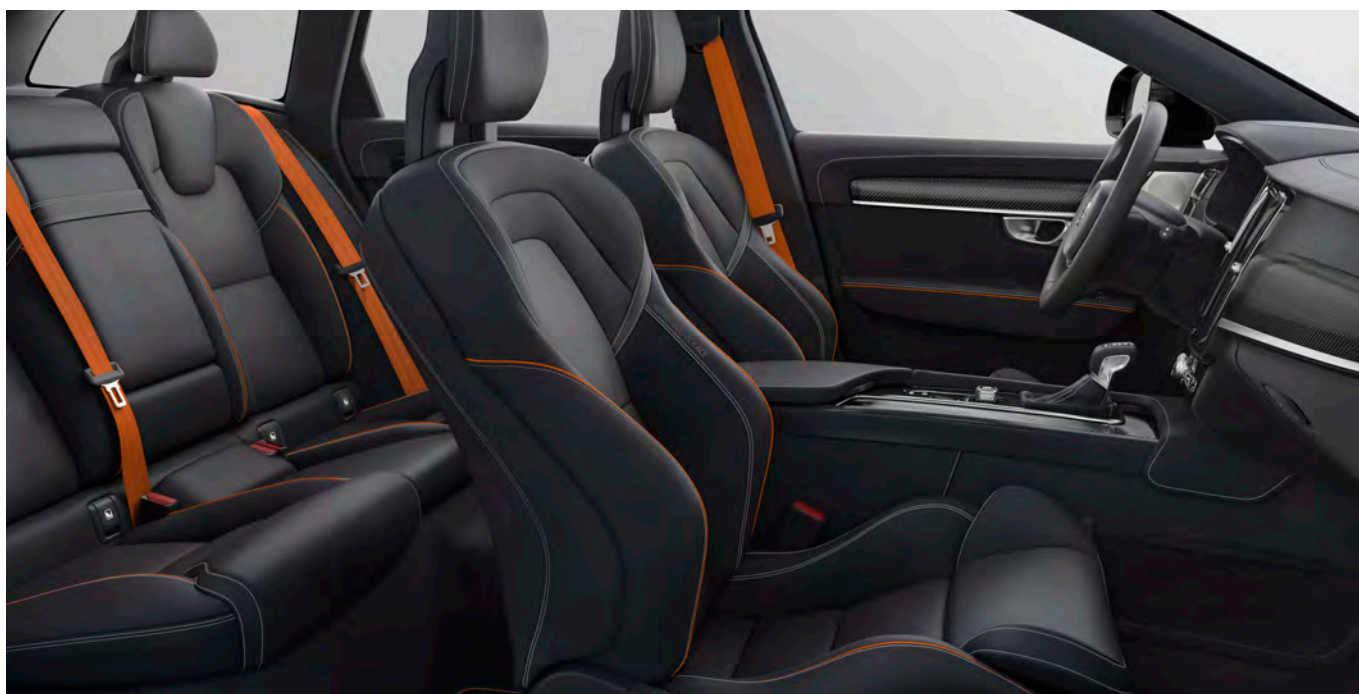
Metal Mesh Aluminium





Nubuck/Perforated Fine Nappa Leather, Contour seat, Charcoal in Charcoal interior, RB0R (R-Design only)

Carbon Fibre



Fine Nappa Leather/Graphite Open Grid Textile Contour seat, Charcoal (Flare Orange piping) in Charcoal interior with charcoal headlining and Flare Orange seat belt, RB0Z (Cross Country Volvo Ocean Race only)

TO SEE THE FULL RANGE OF INTERIORS, UPHOLSTERIES AND DECOR TRIMS FOR YOUR VOLVO V90, PLEASE VISIT [VOLVOCARS.CO.UK](http://VOLVOCARS.CO.UK)

## WHEELS.

The wheels you choose for your Volvo V90 have a big impact on the car's look and character. You have a wide selection of custom-designed wheels to choose from, all developed and tested by Volvo Cars to fit your V90 perfectly. Elegant, rugged or sporty, in stylish silver finish or distinctive Diamond Cut design, in dimensions up to 21 inches – the choice is yours.

**21"** 7-open spoke  
Matt Tech Black Diamond Cut, W006  
(Cross Country Only)



**20"** 8-spoke  
Silver Diamond Cut, 214



**20"** 10-spoke  
Black Diamond Cut, 226  
(Cross Country Only)



**20"** 10-spoke  
Silver Diamond Cut, 1030



**20"** 5-double spoke  
Matt Black Diamond Cut, W007  
(Cross Country Only)



**21"** 5-double spoke  
Matt Black Diamond Cut, 147



**19"** 6-double spoke  
Matt Tech Black Diamond Cut, 151  
(Cross Country Only)



**19"** 5-spoke  
Matt Black Diamond Cut, 158



**19"** 5-double spoke  
Black Diamond Cut, 224  
(Cross Country Only)



**18"** 10-spoke  
Turbine Silver Bright, 154



**18"** 5-double spoke  
Silver, 149

ACCESSORIES.  
YOUR V90, THE WAY YOU WANT IT.



714 Osmium Grey metallic | Exterior styling package with chrome inserts |  
21" 10-Open Spoke Turbine Tinted Silver/Diamond Cut alloy wheels



**Inscription**  
711 Bright Silver metallic | Exterior styling kit with body-coloured inserts |  
21" 5-Spoke Fan Silver Bright alloy wheels



Make the V90 your own with Volvo styling accessories; the perfect addition to your new car. Choose the exterior styling package with chrome inserts for an even more elegant look. Or enhance the dynamic character of your V90 with our exterior styling package

with body-coloured inserts. And especially for your V90 R-Design, we've created an exterior styling kit with glossy black inserts that adds to the car's exclusive appearance. You can also select individual components as separate accessories.



**Exterior styling package with chrome inserts.** The front spoiler lip adds definition to the front end, while the chrome insert highlights the car's width. The sill mouldings emphasise the car's sporty, low-slung profile. At the rear, a body-coloured rear diffuser and integrated dual split end pipes give the car a powerful presence. The optional 21-inch 10-Open Spoke Turbine wheels add to the car's elegance and a more powerful visual statement.



**Exterior styling package with body-coloured inserts.** A front spoiler and sculpted side sill mouldings with body-coloured inserts accentuate the car's low stance, while the integrated dual split end pipes and a body-coloured rear diffuser create an even more purposeful appearance. The optional 21-inch 5-Spoke Fan wheels give the V90 even more presence, whether it's moving or standing still.



**R-Design**  
720 Bursting Blue metallic | Exterior styling package with glossy black inserts |  
21" 5-Double Spoke Matt Black/Diamond Cut alloy wheels



**T6 AWD | Cross Country**  
714 Osmium Grey metallic | Exterior body styling with side scuff plates, dual split tail pipes  
and bumper cover | 21" 7-open spoke Matt Tech Black Diamond Cut alloy wheels



**R-Design exterior styling package with glossy black inserts.** Designed to perfectly complement your V90 R-Design, this exterior styling package with high-gloss black inserts allows you to create an exclusive, individual look. The front spoiler combines with the sill mouldings to emphasise the car's low-slung profile, while the split end pipes create an even more powerful appearance. This exterior styling kit is also available with body-coloured inserts. The optional 21-inch 5-Double-Spoke alloy wheels in Matt Black/Diamond Cut add to a superior road presence.



**Exterior styling accessories.** The side scuff plates in brushed stainless steel and dual split tail pipes perfectly complement the adventurous appearance of your V90 Cross Country. Adding attitude beyond the ordinary, the powerful, large 21-inch Matt Tech Black alloy wheels in expressive 7-Open Spoke Diamond Cut design further enhance the car's rugged looks.

## DESIGNED FOR YOUR LIFE.

Create a V90 that's perfect for your life, with Volvo accessories that are designed around you and your car.

Our Media Server allows passengers to enjoy large amounts of stored entertaining content via their mobile devices, especially comfortable combined with our sleek iPad® holder. For children up to 10 years, our child seats combine comfort with state of the art safety and are designed to fit perfectly into your Volvo. We apply the same stringent standards to our child seats as we do to building our cars, so you know your children are well protected.

Child seat, booster cushion with backrest,  
Leather/Nubuck Textile.



Rearward facing  
child seat.



Infant seat.

Child seat, booster cushion.



Media Server and iPad® holder, rear seat (iPad not included).



Personalised remote key fob, Linear Walnut.



Plastic floor mats.



Illuminated tailgate scuff plate (Inscription only).

## BUILT TO WORK.

To make your Volvo estate work even harder for you, just add our load accessories. Designed to look good and work flawlessly, they will make life less complicated and help you bring the gear you need without compromising comfort, style or safety. For example, you can create a secure and comfortable space for your pet just adding our dog gate, a load compartment divider and a steel grille. And to really extend the load capacity of your V90, our foldable tow bar gives you the ability to tow a trailer and folds discreetly away when not in use.

Protective steel grille. Load compartment divider. Dog gate. Load liner.

Front mud flaps.



Roof box designed by Volvo Cars.

Load compartment mat.



Bumper cover.



Semi-electrical towbar.



Load carriers.

VOLVO V90

**Inscription**  
711 Bright Silver metallic |  
20" 8-Spoke Silver/Diamond Cut, 214





## MAKE YOUR POWERFUL CHOICE.

We created the V90 with one single purpose: to provide you with a car that perfectly fits you and your lifestyle. A car that meets your expectations of a dynamic drive with refined comfort and sophisticated design – built with care for people and the world we share. A car that's intuitive to use and makes life less complicated, and is a pleasure to live with every day.

At the heart of your Volvo V90 is a dynamic, efficient powertrain. Whichever you choose, you will enjoy our latest Drive-E technology that gives you instant response and a smooth ride. Fuel consumption and CO<sub>2</sub> emissions are kept low, and our powertrains comply with strict exhaust emission requirements.

Our Drive-E powertrain range includes advanced diesel and petrol engines mated to our smooth eight-speed automatic gearbox or a distinct six-speed manual gearbox, available with responsive AWD all-wheel drive technology or front-wheel drive. And for the ultimate combination of performance and efficiency in your Volvo V90, there's the option of our T8 Twin Engine AWD with plug-in hybrid technology.

Make your choice, and enjoy the journey wherever it takes you.

### T8 Twin Engine AWD

Our T8 Twin Engine with plug-in hybrid technology delivers an exhilarating drive with uncompromised efficiency. Combining a high-performance petrol engine and an electric motor, this 303hp+87hp/400Nm+240Nm powertrain allows outstanding highway performance and zero emission commuting – with all-wheel drive capability when needed.

### T5

The 250hp/350Nm T5 petrol powertrain is as responsive on the highway as in the city. This superb all-rounder delivers generous power just where you need it, ensuring excellent driveability in combination with our smooth 8-speed automatic gearbox.

### T4

With the T4 190hp/300Nm petrol powertrain you can enjoy a smooth, responsive and highly efficient driving experience. Optimised turbocharging with full torque from low to medium revs and our smooth 8-speed automatic gearbox put you in control of your drive.

### D5 AWD

Our most powerful 235hp/480Nm diesel powertrain D5 AWD allows you to experience performance and refinement without compromises. Twin-turbo engine technology, our 8-speed automatic and all-wheel drive add to instant control.

### D4

Our sophisticated 190hp/400Nm D4 diesel powertrain allows you to enjoy more while using less. Available with our dynamic all-wheel drive and 8-speed automatic, the D4 is designed to give you the most efficient and confident driving experience.

VOLVO **v90**

## WELCOME TO VOLVO CAR LIFESTYLE COLLECTION.

Our Lifestyle Collection includes a wide range of lifestyle accessories – from Swedish crystal and crafted leather bags, to clothing, watches and more selected items. To view the complete collection, please visit [collection.volvocars.com](http://collection.volvocars.com)



## SERVICE BY VOLVO. A SIMPLER WAY.

When you buy a Volvo, you buy the simplest way to have a car. No matter what your car may need, your authorised Volvo retailer will take care of it for you and make sure that your Volvo stays in tip-top shape.

We have our own approach to service that's personal, efficient, and which takes care of you as well as it takes care of your

car. We call it Service by Volvo and it will provide everything you need in the simplest way possible.

Your Volvo Cars retailer offers a whole range of simplifying services all designed around you, ensuring you a carefree ownership experience. Still, this is just the beginning. Soon, you will also get a Personal Service

Technician, your car will be ready within the hour and you can relax in our lounge instead of driving back and forth. It's because everything we do is about finding new ways to make life simpler for people, with our cars as well as our service.

### BUYING & OWNING

- Warranties
- Financing
- Leasing
- Insurance
- Service Contract
- My Volvo website

### VOLVO SERVICE PROMISE

- Volvo Genuine Service
- Software Updates
- Roadside Assistance
- Personal Service Contact
- Car Wash and Vac<sup>1</sup>
- Price Promise
- Health Check
- Alternative Transport

### IF SOMETHING HAPPENS

- Volvo Assistance
- Volvo Glass Services
- Volvo Dent Repair
- Car Climate Services
- Tyre Services
- Volvo Accident Assistance

### HAVE YOU GOT YOUR VOLVO ID?

A Volvo ID allows you to access a whole world of connectivity with your Volvo. With your Volvo ID, you can:

- Access your My Volvo account on [volvocars.co.uk](http://volvocars.co.uk) for car information, updates and offers.
- Access internet services and apps in your car, including connected service booking
- When applicable, sign in to the Volvo On Call app and connect with your car from everywhere

### CONNECTED SERVICE BOOKING

Via Sensus Connect, your Volvo will remind you when it needs servicing and offer to contact your Volvo retailer for you. Booking proposals sent from your preferred retailer can easily be managed directly in the car. When the time comes to drive to your workshop, your Volvo will remind you and even guide you there. And since your Volvo tells us what it needs, we can make sure it always receives the service it requires when it gets there.

**V O L V O**

**Official fuel consumption for the Volvo V90 and V90 Cross Country in MPG (l/100km) ranges from:**

Urban 28.2 (10.0) – 50.4 (5.6), Extra Urban 42.2 (6.7) – 64.2 (4.4),  
Combined 35.8 (7.9) - 128.4 (2.2). CO<sub>2</sub> Emissions range from 183–49g/km.  
MPG figures are obtained from laboratory testing intended for comparisons  
between vehicles and may not reflect real driving results.