

2023

DODGE CHALLENGER





A close-up, high-contrast black and white photograph of a horse's face. The horse's eye is the central focus, and it contains a glowing red Dodge logo consisting of two slanted parallel lines. The word "DNA" is overlaid in large, bold, red, sans-serif capital letters on the left side of the image, partially overlapping the horse's face.

# DNA

## THIS IS BOLD PERFORMANCE

The Dodge Brand was born to deliver muscle to the masses. Almost 50 years later, this Brand has never taken its foot off the gas—power, performance and muscle still reign supreme. But that formula isn't just calculated by intense horsepower and torque. Our performance is also measured by the way advanced safety and security features help protect passengers. The

onboard technology that helps keep occupants connected to the people, places and entertainment that matter most is another gauge of power. Muscle can be tracked by the ability to tow hefty loads, seat up to seven passengers and bring efficiencies to engines. Every vehicle in the 2023 lineup is designed to live up to the pillars that support the Dodge Brand.



## BROTHERHOOD OF MUSCLE

---



**CHARGER SRT HELLCAT® REDEYE  
JAILBREAK //**  
shown in Frostbite.



**DURANGO SRT HELLCAT //**  
shown in Destroyer Grey with  
available Flame Red dual stripes  
and SRT® Black Package.



**CHALLENGER SUPER STOCK //**  
shown in Go Mango.



**HORNET GT PLUS //**  
shown in Hot Tamale with  
available Track Pack and  
Blacktop Package.





---

## JOIN THE BROTHERHOOD

RETRO DESIGN, AMERICAN MUSCLE, MODERN TECHNOLOGY AND A FEROCIOUS ATTITUDE UNDERPIN THIS LEGEND'S REPUTATION. CHOOSE BETWEEN THE EFFICIENT SAVVINESS OF A CHALLENGER SXT, THE DRAG RACE PROWESS OF AN SRT® SUPER STOCK OR SOMETHING IN BETWEEN. THERE'S A CHALLENGER MODEL WAITING FOR YOU.

////// Challenger R/T shown in White Knuckle with available R/T classic bodyside stripe.



# ONE HELL OF A RIDE

## **SRT HELLCAT® // FAMILY OF LEGENDS**

THE SRT HELLCAT model is powered by a Supercharged 6.2L HEMI® SRT® V8 engine that delivers 717 horsepower and 656 lb-ft of torque. Two fully functional, air-sucking snorkels on the hood and the driver-side illuminated Air-Catcher® headlamp feed cold air to the engine to keep it cool and efficient. This model clocks the quarter-mile at 127 mph.

THE SRT HELLCAT REDEYE model houses a high-output version of the Supercharged 6.2L HEMI SRT V8 engine.

With 25 major component upgrades, the engine unleashes 797 horsepower and 707 lb-ft of torque and helps deliver a top speed of 203 mph and 10.8-second quarter-mile at 131 mph. Race-ready features include dual-snorkel hood, Torque Reserve, SRT Power Chiller® and After-Run Chiller. Offered drive ratios include a standard 2.62:1 or available 3.09:1 for increased launch capability.

THE SRT SUPER STOCK model also uses the Supercharged 6.2L HEMI high-output V8 engine, but it takes its ferocity further with a revised powertrain and TorqueFlite® 8HP90 8-speed automatic transmission.

The result is 807 horsepower, 3.25-second 0 - 60-mph acceleration, elapsed quarter-mile time of 10.5 seconds at 131 mph and a 168-mph top speed. Standard features include widebody, competition suspension, lightweight aluminum four-piston Brembo® brakes, and a wheel and Drag Radial combination designed for optimal grip off the line.





# AN ABSOLUTE MOOD

---

You don't need words, you just need to show up. Menacing projector headlamps with quad-halo LED surrounds are a throwback to the famed '71 Challenger. The taillamps embody an old-school, seamless, split design, while the LEDs give it a contemporary twist. A performance hood, integrated dual bright exhaust tips and rear spoiler deliver intimidating vibes.

////// Challenger SRT Hellcat® Jailbreak shown in Octane Red with SRT® Black Package.



# 00:1320



It's named for the quarter-mile distance (1,320 feet), but if you're eyeing this trim level, you already knew that. While you can certainly drive this beast to work, what you're most excited to do is take it to the drag strip. The Challenger R/T Scat Pack 1320 model is the drag-oriented, street-legal muscle car for the grassroots drag racer. It's outfitted with everything needed to floor it on the track: TransBrake, drag suspension, Adaptive Damping Suspension, 275/40R20 102Y Drag Radial tires and 20 by 9.5-inch Low-Gloss Black drag wheels with

knurled bead seats. The unique fender badge lets everyone know you aren't messing around; the badge on the instrument panel reminds you that you're well-equipped for the run. Settle in, select Drag Mode to adjust the traction and stability control settings, grip the Alcantara® wrapped performance steering wheel, wait for double yellow lights, then engage the TransBrake, release when the Christmas tree goes green and move down the quarter-mile with the full force of the 6.4L HEMI® engine and its 485 horses and 475 lb-ft of torque.

////// Challenger R/T Scat Pack shown in Pitch Black with available 1320.



**CHALLENGER SUPER STOCK**

**MOST POWERFUL**

**MUSCLE CAR<sup>1\*</sup>**

\*A note about this brochure: all disclosures can be found on the last page.



**ICONIC HEMI® ORANGE** // The Scat Pack name honors legendary '60s Dodge muscle, and the available HEMI Orange Package pays homage to the original Orange color of the iconic engine. Available exclusively on Challenger Scat Pack and GT trim levels, this package is steeped in race-inspired style. A sporty, offset Orange and Gunmetal stripe runs tip to tail for maximum impact. Orange brake calipers are visible through the spokes of the 20 by 11-inch Carbon Black Warp-Speed aluminum wheels on Scat Pack models or the 20 by 9-inch Mid-Gloss Black aluminum wheels on GT models. The trim-level badging with pops of Orange does the rest of the talking.

Inside, Desert Orange accent stitching gives a custom feel to the instrument panel (IP), steering wheel, shifter boot, seats and doors. K-Black and Gloss Black accents are found on the three steering-wheel bezels, the cluster mask trim, HVAC rings and the shifter body (automatic transmission only). An Orange-accented "392" IP badge also sets this package apart.







**CHALLENGER SRT HELLCAT® REDEYE JAILBREAK //**  
shown with available real carbon fiber interior accents  
and stitched instrument panel.





**CHALLENGER SRT HELLCAT® REDEYE JAILBREAK //**  
shown with Sepia perforated Laguna leather trim interior  
with Redeye logo and Silver accent stitching.





**CATCH 'EM OFF GUARD //** The Challenger SRT<sup>®</sup> Super Stock model gets its name from the “Super Stock” class of vehicle in drag racing. The class is defined by vehicles purposely built to look like an ordinary passenger vehicle but are really highly modified race cars. While this powerhouse hides its true badging, it more than compensates for it with the beast under the hood. The only tells are 18 by 11-inch wheels with a Low-Gloss Granite finish and Nitto<sup>®</sup> Drag Radials.









# PEACE OUT

## RETRO-THEMED MUSCLE

///// **THE R/T SCAT PACK** model gets its muscle from the legendary 392 HEMI® V8 engine. The numbers tell the rest of the story: 485 horsepower, 475 lb-ft of torque, 0 - 60 mph in the low-4-second range and a quarter-mile in the mid-12-second range. This power is underpinned by four-piston Brembo® brakes, Three-Mode Electronic Stability Control (ESC)<sup>2</sup> with Full-Off Mode, high-performance suspension with Bilstein® shocks and 20 by 9-inch aluminum wheels.

///// **THE R/T SCAT PACK WIDEBODY** model features a beefed-up stance for better grip and handling than our non-widebody model. The available Shaker Package supplies a bigger performance kick through a Mopar® Cold-Air Intake and full-floating, open-element Shaker hood scoop.

///// **ALL R/T SCAT PACK MODELS** include Dodge SRT® Performance Pages, a 7-inch reconfigurable digital display, and race-inspired seats featuring a Scat Pack Bee logo embroidered on either a standard high-performance premium cloth or available Nappa leather trim with Alcantara® suede inserts.





**SIZEABLE PERFORMANCE** // Challenger Widebody configurations bring a different dynamic of performance, boldness and power through a more aggressive stance. Available on R/T Scat Pack, SRT Hellcat® and SRT Hellcat Redeye and standard on SRT® Super Stock models, fender flares are wider and add 3.5 inches to overall vehicle width.

The extra room makes way for track-ready 20 by 11-inch forged aluminum wheels riding on sticky 305/35ZR20 Pirelli® P ZERO™ tires on SRT Hellcat and Scat Pack models. The SRT Super Stock model receives 18 by 11-inch Low-Gloss Granite aluminum drag wheels and P315/40R20 102W Nitto® Street-Legal Drag Radials.

In addition to extra rubber on the road, the R/T Scat Pack Widebody model includes six-piston Brembo® front brakes and an Adaptive Damping Suspension. All other Widebody models employ a standard Widebody competition suspension.

///// Challenger SRT Scat Pack Widebody shown in Pitch Black.



# ENGINE// TRANSMISSION

3.6L PENTASTAR® VARIABLE VALVE TIMING (VVT) V6 WITH TORQUEFLITE® 8-SPEED AUTOMATIC	303 HORSEPOWER (HP)/268 LB-FT TORQUE
5.7L HEMI® VVT V8 WITH TREMEC® 6-SPEED MANUAL	375 HP/410 LB-FT TORQUE
5.7L HEMI V8 WITH TORQUEFLITE 8-SPEED AUTOMATIC	372 HP/400 LB-FT TORQUE
392 HEMI® V8 WITH TREMEC 6-SPEED MANUAL	485 HP/475 LB-FT TORQUE
392 HEMI V8 WITH TORQUEFLITE 8-SPEED AUTOMATIC	485 HP/475 LB-FT TORQUE
SUPERCHARGED 6.2L SRT HELLCAT® HEMI V8 WITH TREMEC HIGH-PERFORMANCE 6-SPEED MANUAL	717 HP/656 LB-FT TORQUE
SUPERCHARGED 6.2L SRT HELLCAT HEMI V8 WITH TORQUEFLITE HIGH-PERFORMANCE 8-SPEED AUTOMATIC	717 HP/656 LB-FT TORQUE
SUPERCHARGED 6.2L SRT HELLCAT HEMI HIGH-OUTPUT V8 WITH TORQUEFLITE HIGH-PERFORMANCE 8-SPEED AUTOMATIC	797 HP/707 LB-FT TORQUE 807 HP/707 LB-FT TORQUE (SRT® SUPER STOCK)



# 00:20:23

---

**TRACK PROVEN TUNED CHASSIS** // Intense track conditions require tightly engineered hardware. Challenger models showcase a high-performance tuned chassis that's ready to go.

**SHOCK ABSORBERS** // Available Bilstein® high-performance shock absorbers are precision-damped to help provide a confident, smooth ride for the typical commute while still being capable for weekend track duty.

**SUSPENSION** // Every Challenger model in the lineup is underpinned by a proven suspension. Depending on trim level, options range from sport-tuned to competition to drag-race-specific suspension.

////// Challenger R/T shown in White Knuckle.



---

## GEOMETRY MAJOR

Movement and staying power come from a sophisticated suspension geometry and rear-wheel drive (RWD). The independent five-link rear suspension is finely tuned to help provide remarkable handling and ride comfort. A lower unsprung mass helps maintain optimum tire contact with the ground and minimize road noise.

Models equipped with a 392 HEMI® V8 engine feature unique suspension geometry that helps improve balance, cornering ability and steering responsiveness. Bilstein® shocks and a lowered suspension allow these performers to achieve 0.93 g on the skid pad.

A Bilstein Three-Mode Adaptive Damping Suspension System is available on R/T Scat Pack and standard on all SRT Hellcat® models. It offers different suspension firmness settings: Street Mode (sporty), Sport Mode (firm) and Track Mode (firmest max handling). The standard R/T Scat Pack suspension delivers performance handling through an aggressive front- and rear-camber geometry. Set at -1.2 degrees in the front and -0.75 degrees in the rear, this Challenger model is set up for high-speed cornering, with its tires leaning inboard at the top relative to the body.







**PERFORMANCE IS A  
YEAR-ROUND COMMITMENT**



////// Challenger GT all-wheel drive (AWD) shown in Pitch Black with Blacktop Package.



---

## ALL-WHEEL DRIVE

**CONQUER THE CONDITIONS** // When Mother Nature gets sloppy, there's no need to park your ride. Challenger all-wheel drive (AWD) models deliver reassuring control when you need it. The advanced automatic front-axle disconnect technologically, intuitively and seamlessly transitions between rear-wheel drive (RWD) and AWD without driver intervention. Under normal driving conditions, the front axle is disengaged and 100 percent of the engine's torque is directed to the rear wheel. When sensors indicate more traction is needed, the system automatically engages the front axle and instantly transitions to AWD Mode. These systems work with the vehicle's Electronic Stability Control (ESC)<sup>2</sup> System to help deliver precise front-to-rear torque control while preserving unrelenting drive.



**CHALLENGER GT AWD** //  
shown in White Knuckle with available  
Blacktop Package.



## SAFETY & SECURITY FEATURES

**PARKVIEW® REAR BACK-UP CAMERA<sup>3</sup>** // This system displays the area directly behind your vehicle when the vehicle is in Reverse. Dynamic grid lines adjust with steering input to assist in parking. Standard.

**PARKSENSE® REAR PARK ASSIST SYSTEM<sup>3</sup>** // When your vehicle is in Reverse and moving at a low speed, the system can detect objects in your vehicle's path. When sensors detect objects in the back-up pathway, the system provides an audible and visual warning. Available.

**BLIND SPOT MONITORING (BSM)<sup>4</sup> AND REAR CROSS-PATH DETECTION<sup>3</sup> SYSTEM** // Dual radar sensors constantly monitor driver blind spots, providing notification of an encroaching vehicle via illuminated icons in the sideview mirrors and by an audible chime. The system includes Rear Cross-Path Detection<sup>3</sup>, which monitors for vehicles and objects in perpendicular relationships to the vehicle while backing out of, for example, parking spots or driveways. Available.

**ADAPTIVE CRUISE CONTROL (ACC)<sup>5</sup>** // Automatically adjusts vehicle speed to maintain desired distance from the vehicle ahead. Available.

**FULL-SPEED FORWARD COLLISION WARNING (FCW)<sup>6</sup>** // Radar and camera technology combine to alert you when the system senses a potential frontal impact. If you're not able to respond quickly enough, the system will transmit audible and visual warnings. Warning sensitivity can be adjusted to driver preference. Available.

**ELECTRONIC STABILITY CONTROL (ESC)<sup>2</sup>** // This system is designed to assist the driver in maintaining control of the vehicle when a loss of traction is detected. ESC<sup>2</sup> senses when a vehicle loses steering control and attempts to correct the vehicle's course by automatically applying the brakes at individual wheels. Standard.

**RAIN-SENSING WINDSHIELD WIPERS** // System sensors automatically detect moisture on the windshield and activate the wipers. Available.

**READY ALERT BRAKING** // The system anticipates situations when you might initiate an emergency brake stop and uses the ESC<sup>2</sup> pump to pre-charge the brake system in order to decrease the time required for full brake application. Standard.

**RAIN BRAKE SUPPORT** // When your car's windshield wipers have been activated, the system pulses the brake pads closer to the spinning rotors, helping to keep the rotors and pads dry for greater control and operator security. Standard.

**DODGE AIR FILTRATION SYSTEM** // This Air Filtration System filters 95 percent of air particulates while separating out pollen, allergens and bacteria, creating a more welcoming environment for passengers. Standard.



# GO BIG ON THE GO

Uconnect® brings a wide range of interactive features to your vehicle and beyond through a highly intuitive communication experience. Trips are enhanced with informative and entertaining apps. Access them on your Uconnect touchscreen as well as your smartphone.

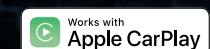
Listen to your favorite playlist from your connected device, then flip to SiriusXM® Radio<sup>7</sup> and enjoy the best commercial-free music, plus every major sport and the biggest names in entertainment, news and comedy. You'll get over 150 channels, all at the press of a button. With the SiriusXM Platinum Plan<sup>7</sup>, you get every channel available on your satellite radio, and you can also listen wherever you go on your portable devices with the SiriusXM App<sup>7</sup>, which is included with your 6-month trial. Available.

Drive worry-free with SiriusXM Guardian™<sup>8</sup>—a premium suite of safety and convenience services that can be accessed in-vehicle or through the Dodge App.<sup>9</sup> Includes a 12-month trial. Available.

**LEARN MORE ABOUT UCONNECT AND RELATED SERVICES AT [DRIVEUCONNECT.COM](http://DRIVEUCONNECT.COM) OR THE DODGE APP.<sup>9</sup>**



Uconnect®







## STRIPE:CHOICES

1 // SCAT PACK STRIPE

2 // R/T CLASSIC BODYSIDE STRIPE

3 // SRT HELLCAT® DUAL HOOD STRIPES

4 // SRT HELLCAT SATIN BLACK-PAINTED HOOD

5 // SHAKEDOWN GRAPHICS

6 // SHAKER GRAPHICS

7 // BLACKTOP STRIPE

8 // V6 BODYSIDE STRIPE

9 // T/A BODYSIDE STRIPE

10 // PAINTED BLACK SATIN GRAPHICS PACKAGE

11 // SATIN BLACK-PAINTED ROOF

12 // HEMI® ORANGE PACKAGE STRIPE

13 // JAILBREAK WIDEBODY STRIPE





.....  
**CHALLENGER WHEELS //**  
Challenger SRT® Super Stock shown in  
Go Mango.





# HOLD YOUR HORSES //

**BRAKING AUTHORITY //** Solid stopping power comes from standard 4-wheel antilock disc brakes. Additional stopping power comes from the available Brembo® Performance Brake System, featuring vented two-piece front rotors and four-piston front calipers for outstanding heat management and superior braking performance. For superb stopping capabilities, the SRT® engineered Brembo Performance Brake System, with six-piston front and four-piston rear calipers, results in improved performance braking when paired with wind-tunnel-designed brake ducts.



TO EACH  
THEIR OWN



SRT® SEAT BELT OPTIONS //  
available in Demonic Red, Sepia and Hammerhead Grey;  
standard in Black (inset).



# COLOR:CHOICES

PITCH BLACK (PX8)

PLUM CRAZY (PHD)

GRANITE (PAU)

B5 BLUE (PQD)

F8 GREEN (PFQ)

SINAMON STICK (PEC)

TORRED (PR3)

GO MANGO (PVP)

WHITE KNUCKLE (PW7)

OCTANE RED (PRV)

TRIPLE NICKEL (PSE)

FROSTBITE (PCA)

DESTROYER GREY (PDN)

SUBLIME GREEN (PFB)

## COLOR CRAZY

YOU DON'T BUILD FAMILY SEDANS THAT PACK OVER 800 HORSEPOWER, COUPES THAT DOUBLE AS WEEKEND RACERS AND SUVs THAT IMPRESS THE NHRA MORE THAN THE PTA JUST TO GIVE THEM COLOR NAMES LIKE WHITE, BLUE, RED AND GREY. FOR DECADES, DODGE VEHICLES HAVE BEEN COATED IN COLORS WITH NAMES AS FLASHY AS THE VEHICLES THEMSELVES. THE ROSTER HAS INCLUDED PANTHER PINK, HEMI® ORANGE, TOP BANANA, SASSY GRASS, GO MANGO AND PLUM CRAZY. THE REASON FOR THE BRASH NAMES IS SIMPLE—IT'S ABOUT ADDING ATTITUDE AND EDGE TO EVERYTHING WE DO.





Sedoso/Houndstooth Premium Cloth (Standard in Black)



Nappa Pearl Leather Trim with Nappa Leather Perforated Inserts and Tungsten Accent Stitching (Available in Black)



18 by 7.5-inch Satin Carbon // (WDR) Standard on RWD



19 by 7.5-inch Satin Carbon // (WRQ) Standard on AWD



20 by 8-inch Satin Carbon // (WHC) Available



20 by 8-inch Satin Carbon // (WPZ) Available



20 by 8-inch Black Noise // (WRE) Available



20 by 8-inch Black Noise // (WH4) Available



19 by 7.5-inch Black Noise // (WP4) Available



20 by 9-inch Low-Gloss Granite Crystal // (WRP) Available



Dub Plate interior accents; Standard



Real Carbon Fiber interior accents; Available

# SXT

## STANDARD

- 3.6L Pentastar® V6 engine—303 hp and 268 lb-ft of torque
- TorqueFlite® 8-speed automatic transmission
- Performance suspension
- Sport Mode
- 4-wheel Antilock Brake System (ABS)
- Electronic Stability Control (ESC)<sup>2</sup>
- Bright fuel-filler door
- Integrated dual bright exhaust tips
- Split LED taillamps
- Body-color rear spoiler with camera<sup>3</sup>
- Automatic headlamps
- Daytime running lamps (DRLs)
- 10-way power driver's seat, includes 4-way power lumbar adjust
- Dub plate instrument-panel/console bezel finish
- 7-inch Thin Film Transistor (TFT) configurable cluster display
- Uconnect® 4 with 7-inch touchscreen display
- Apple CarPlay<sup>®10</sup>/Android Auto<sup>™11</sup>
- Uconnect Integrated Voice Command with wireless connectivity
- 6-speaker audio system
- 6 air bags<sup>12</sup>
- Keyless Enter 'n Go<sup>™</sup> with push-button start
- Security alarm<sup>13</sup>

## OPTIONS/PACKAGES

- Uconnect 4C Navigation with 8.4-inch touchscreen display
- SiriusXM<sup>®</sup> Radio<sup>7</sup> (6-month trial subscription)
- Power sunroof
- Compact spare tire
- Blacktop Package
- Blacktop stripe
- Blacktop Special Edition Package
- Cold Weather Group
- Technology Group
- Plus Package
- Mopar<sup>®</sup> Interior Appearance Group

## SXT ALL-WHEEL DRIVE (AWD)

### Adds to SXT

- AWD System with live-axle disconnect
- AWD suspension
- 235 All-Season Performance tires

### OPTIONS/PACKAGES

- Uconnect 4C Navigation with 8.4-inch touchscreen display
- Power sunroof
- Alpine<sup>®</sup> Audio Group
- Blacktop Package
- Blacktop stripe
- Cold Weather Group
- Technology Group
- Plus Package
- Blacktop Special Edition Package







Sedoso/Houndstooth Premium Cloth (Standard in Black)



Nappa Leather Trim with Alcantara® Bolsters, Perforated Inserts and Tungsten Accent Stitching (Available in Black)



20 by 8-inch Satin Carbon // (WPZ) Standard on RWD



20 by 8-inch Satin Carbon // (WHC) Standard on AWD



20 by 8-inch Black Noise // (WH4) Available



20 by 8-inch Black Noise // (WRE) Available



20 by 8-inch Tinted Polish with Granite Pockets // (WHH) Available



20 by 9-inch Low-Gloss Granite Crystal // (WRP) Available



20 by 9-inch Mid-Gloss Black Aluminum // (WHT) Available

# GT

## ADDS TO SXT

- Sport suspension
- Performance brakes
- Performance steering
- GT bright grille badge
- Performance hood and splitter
- ParkSense® Rear Park Assist System<sup>3</sup>
- Performance “4-bump” steering wheel
- Paddle shifters
- Universal garage door opener
- Remote Start System<sup>14</sup>
- Super Track Pack

## OPTIONS/PACKAGES

- Uconnect® 4C Navigation with 8.4-inch touchscreen display
- SiriusXM® Radio<sup>7</sup> (6-month trial subscription)
- Power sunroof
- 3-Season tires
- Compact spare tire
- Alpine® Audio Group
- Blacktop Package
- Cold Weather Group
- Harman Kardon® Audio Group
- Mopar® Interior Appearance Group
- Performance Handling Group
- Plus Package
- Technology Group
- Brake calipers—Red
- Blacktop stripe
- HEMI® Orange Package
- Bodyside stripes
- Blacktop Special Edition Package

## GT ALL-WHEEL DRIVE (AWD)

### Adds to GT

- AWD System with live-axle disconnect
- AWD suspension
- 245 All-Season Performance tires

## OPTIONS/PACKAGES

- Uconnect 4C Navigation with 8.4-inch touchscreen display
- Power sunroof
- Alpine Audio Group
- Blacktop Package
- Cold Weather Group
- Plus Package
- Technology Group
- Compact spare tire
- Bodyside stripes
- Blacktop Special Edition Package



Dub Plate interior accents; Standard

Real Carbon Fiber interior accents; Available





Sedoso/Houndstooth Premium Performance Cloth (Standard in Black)



Nappa Leather Trim with Alcantara® Bolsters, Perforated Inserts and Tungsten Accent Stitching (Available in Black)



Nappa Leather Trim with Alcantara Bolsters, Perforated Inserts and Tungsten Accent Stitching (Available in Black)



20 by 8-inch Tinted Polish with Granite Pockets // (WHH) Standard



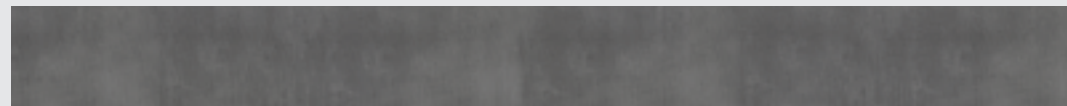
20 by 8-inch Black Noise // (WRE) Available



20 by 9.5-inch Low-Gloss Black with Knurled Beadlock // (WPJ) Available



20 by 9-inch Low-Gloss Granite Crystal // (WRP) Available



Dub Plate interior accents; Standard

## R/T

### STANDARD

- 5.7L HEMI® V8 engine—375 hp and 410 lb-ft of torque (with manual transmission)
- 372 hp and 400 lb-ft of torque (with automatic transmission)
- 6-speed manual transmission
- Antispin differential
- Super Track Pack
- Electronic Stability Control (ESC)<sup>2</sup>
- Sport suspension
- Performance brakes
- Performance steering
- 345 fender badge
- R/T badge
- ParkSense® Rear Park Assist System<sup>3</sup>
- Active Exhaust System with bright tips
- Body-color rear spoiler with camera<sup>3</sup>
- Performance hood and front splitter
- Automatic headlamps
- Daytime running lamps (DRLs)
- Projector fog lamps
- 10-way power driver's seat, includes 4-way power lumbar adjust
- Bright pedals
- Dub plate instrument-panel/console bezel finish
- Performance "4-bump" steering wheel
- 7-inch Thin Film Transistor (TFT) configurable cluster display
- Uconnect® 4 with 7-inch touchscreen display
- Apple CarPlay<sup>®10</sup>/Android Auto<sup>™11</sup>
- 6-speaker audio system
- Universal garage door opener
- Keyless Enter 'n Go<sup>™</sup> with push-button start
- Security alarm<sup>13</sup>

### OPTIONS/PACKAGES

- TorqueFlite® 8-speed automatic transmission
- Power sunroof
- Dual R/T side stripes
- Mopar® Black Hood Pin Kit
- Brake calipers—Red
- 3-Season tires
- Compact spare tire
- Uconnect 4C Navigation with 8.4-inch touchscreen display
- SiriusXM® Radio<sup>7</sup> (6-month trial subscription)
- Alpine® Audio Group
- Blacktop Package
- Cold Weather Group
- Harman Kardon® Audio Group
- Mopar Interior Appearance Group
- Performance Handling Group
- Performance Plus Package
- Plus Package
- Shaker Package
- T/A Package
- Technology Group
- Blacktop stripe
- Mopar Front Strut Tower Brace







Sedoso/Houndstooth Premium Performance Cloth with Bee Logo (Standard in Black)



Nappa Leather Trim with Alcantara® Bolsters, Perforated Inserts and Tungsten Accent Stitching (Available in Black)



Nappa Leather Trim with Alcantara Bolsters and Perforated Inserts (Available in Black)



Nappa Leather Trim with Alcantara Bolsters, Perforated Inserts with "T/A" Logo and Tungsten Accent Stitching (Available in Black)



Nappa Leather Trim with Alcantara Perforated Inserts with " //" Logo and Tungsten Accent Stitching (Available in Black)



20 by 9-inch Low-Gloss Granite Crystal // (WRP) Standard



20 by 9.5-inch Low-Gloss Black Lightweight Forged // (WRV) Available



20 by 9.5-inch Brass Monkey Lightweight // (WRJ) Available



20 by 9.5-inch Low-Gloss Black with Knurled Bead // (WPJ) Available



Dub Plate interior accents; Standard



Real Carbon Fiber interior accents; Available

# R/T SCAT PACK

## ADDS TO R/T

- 392 HEMI® V8 engine—485 hp and 475 lb-ft of torque
- 4-piston Brembo® brakes—All corners
- High-performance suspension
- Launch Assist
- Line Lock
- 220-amp alternator
- Forward-facing "392 Bee" fender badges
- Satin Black fuel-filler door
- Satin Black rear spoiler with camera<sup>3</sup>
- Aluminum Performance hood with center air inlet and dual heat extractors
- Split Gloss Black grille surround
- " //" illuminated Air-Catcher® headlamps
- Uconnect® 4C with 8.4-inch touchscreen display
- SiriusXM® Radio<sup>7</sup> (6-month trial subscription)
- SRT® Performance Pages
- SRT configurable drive modes
- 6 premium Alpine® speakers
- 276-watt amplifier
- Deluxe Security System<sup>13</sup>

## OPTIONS/PACKAGES

- TorqueFlite® 8-speed automatic transmission
- 275 Pirelli® 3-Season tires
- Power sunroof
- Mopar® Black Hood Pin Kit
- SRT Performance spoiler
- Scat Pack stripe

- Uconnect 4C Navigation with 8.4-inch touchscreen display
- Alpine Audio Group
- Carbon/Suede Interior Package
- Dynamics Package
- Harman Kardon® Audio Group
- Mopar Interior Appearance Group
- Plus Package
- Shaker Package
- Shaker Graphics
- Shakedown Graphics
- T/A Package
- Technology Group
- 1320
- 1320 Plus Package
- Mopar Front Strut Tower Brace







Sedoso/Houndstooth Premium Cloth  
(Standard in Black)



Nappa Leather Trim with Nappa Leather Perforated Inserts and Tungsten Accent Stitching  
(Available in Black)



Nappa Leather Trim with Alcantara® Bolsters and Perforated Inserts  
(Available in Black, Black/Ruby Red)



Nappa Leather Trim with Alcantara Bolsters, Perforated Inserts and Tungsten Accent Stitching  
(Available in Black)



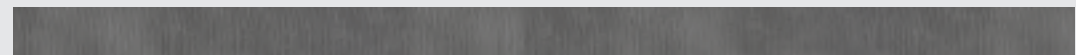
20 by 9-inch Low-Gloss Granite Crystal // (WRP) Standard



20 by 11-inch Carbon Black // (WSG) Available



20 by 11-inch Carbon Black Warp-Speed // (WHW) Available



Dub Plate interior accents; Standard



Real Carbon Fiber interior accents; Available

# SCAT PACK WIDEBODY

## ADDS TO R/T SCAT PACK

- Brembo® 6-piston front brake calipers
- Adaptive Damping Suspension
- 305 Pirelli® All-Season tires
- 3.09 rear axle ratio
- Widebody fender flares
- Leather flat-bottom steering wheel
- Performance shift indicator

## OPTIONS/PACKAGES

- 305/35ZR20 Pirelli P ZERO™ Summer tires
- Brake calipers—Red
- Power sunroof
- SRT® Performance spoiler
- Scat Pack stripe
- Uconnect® 4C Navigation with 8.4-inch touchscreen display
- Rear Seat Delete Group
- Alpine® Audio Group
- HEMI® Orange Package
- Carbon/Suede Interior Package
- Driver Convenience Group
- Harman Kardon® Audio Group
- Mopar® Interior Appearance Group
- Plus Package
- Technology Group
- Shaker Package
- Shaker Graphics
- Shakedown Graphics
- T/A Package
- T/A side stripe
- Mopar Black Hood Pin Kit
- Mopar Front Strut Tower Brace







Sedoso/Houndstooth Premium Cloth (Standard in Black)



Nappa Leather Trim with Alcantara® Inserts with Hellcat Logo and Tungsten Accent Stitching (Available in Black)



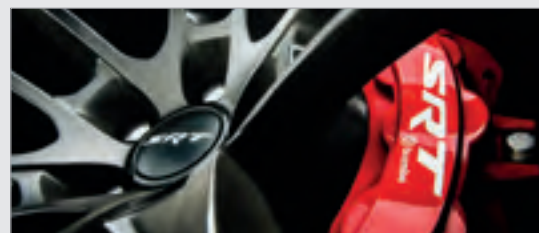
Laguna Leather Trim with Laguna Perforated Inserts with Embossed Hellcat Logo (Available in Black, Black/Demonic Red, Black/Sepia)



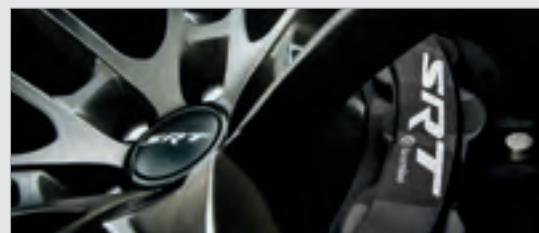
Laguna Leather Trim with Alcantara Perforated Inserts with Hellcat Logo and Tungsten Accent Stitching (Available in Black)



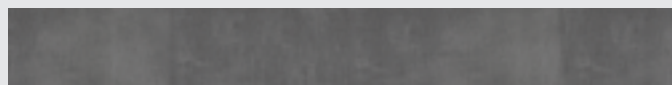
18 by 11-inch Low-Gloss Granite // (WBB) Standard



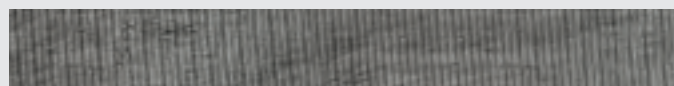
Brake calipers shown in Red // Standard



Brake calipers shown in Black // Available



Dub Plate interior accents; Standard



Dark Engine Turn interior accents; Available



Real Carbon Fiber interior accents; Available

# SRT® SUPER STOCK

## STANDARD

- Supercharged 6.2L high-output engine—807 hp and 707 lb-ft of torque
- TorqueFlite® 8-speed automatic transmission
- Performance-tuned asymmetrical limited-slip differential with a 3.09 final drive ratio
- SRT Power Chiller®
- Unique Redeye badging
- 315/40R18 Nitto® NT05R Drag Radials
- Lightweight all-aluminum Brembo® 4-piston brake calipers
- 14.2-inch vented rotors
- Launch Assist
- Launch Control
- Line Lock
- Torque Reserve
- Race Cooledown
- SiriusXM® Radio<sup>7</sup> (6-month trial subscription)

## OPTIONS/PACKAGES

- Brake calipers—Black
- Power sunroof
- Painted Black Satin Graphics Package
- Satin Black-painted roof
- Satin Black-painted hood
- SRT Performance spoiler
- Uconnect® 4C Navigation with 8.4-inch touchscreen display
- Red seat belts
- Rear Seat Delete Group
- Alcantara Appearance Package
- Carbon/Suede Interior Package
- Driver Convenience Group
- Laguna Leather Package
- Harman Kardon® Audio Group
- Plus Package
- Technology Group
- Dual stripe—Carbon
- Mopar® Black Hood Pin Kit
- SRT Black Package







Sedoso/Houndstooth Premium Cloth with Hellcat Logo (Standard in Black)



Nappa Leather Trim with Alcantara® Inserts with Hellcat Logo and Tungsten Accent Stitching (Available in Black)



Laguna Leather Trim with Laguna Perforated Inserts with Embossed Hellcat Logo (Available in Black, Black/Demonic Red, Black/Hammerhead Grey, Black/Sepia)



Laguna Leather Trim with Alcantara Perforated Inserts with Hellcat Logo and Tungsten Accent Stitching (Available in Black)



20 by 9.5-inch Low-Gloss Black with Knurled Bead // (WPJ) Standard



20 by 11-inch Carbon Black Warp-Speed // (WHW) Available



20 by 11-inch Carbon Black Lightweight // (WHP) Available



20 by 11-inch Brass Monkey Widebody // (WDF) Available



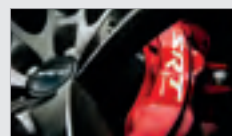
20 by 11-inch Satin Carbon Warp-Speed // (WF9) Available



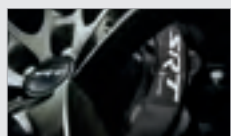
20 by 11-inch Devil's Rim // (WSC) Available



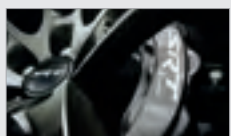
20 by 11-inch Lightweight Granite // (WHE) Available



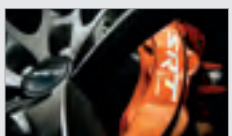
Brake calipers shown in Red // Standard



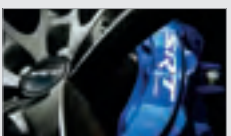
Brake calipers shown in Black // Available



Brake calipers shown in Gunmetal // Available



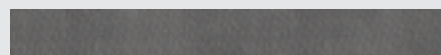
Brake calipers shown in Orange // Available



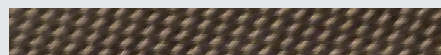
Brake calipers shown in Blue // Available



Brake calipers shown in Yellow // Available



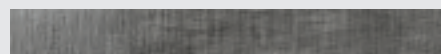
Dub Plate interior accents; Standard



Copper Weave Carbon Fiber interior accents; Available



Hectic Mesh interior accents; Available



Dark Engine Turn interior accents; Available



Real Carbon Fiber interior accents; Available

# SRT HELLCAT® WIDEBODY JAILBREAK

## STANDARD

- 807 hp and 707 lb-ft of torque
- SRT Power Chiller®
- 2.62 rear axle ratio (8-speed)
- 305/35ZR20 All-Season tires
- Widebody competition suspension
- Widebody fender flares
- Redeye decklid badge
- Redeye fender badge
- Redeye grille badge
- Satin Black Challenger decklid badge
- Satin Black Dodge taillamp badge
- 220-mph speedometer
- Black door trim panels
- Black-edged premium floor mats
- High-performance engine controller
- Jailbreak instrument-panel badge
- Black seat belts
- 6-piston Brembo® front brakes
- Competition Adaptive Damping Suspension
- After-run cooling system
- Aluminum dual-scoop hood
- SRT Hellcat front fascia
- SRT® Performance leather steering wheel
- Performance shift indicator
- Widebody competition suspension
- 305 Pirelli® All-Season Performance tires
- Widebody fender flares
- SiriusXM® Radio<sup>7</sup> [6-month trial subscription]

- Alcantara steering wheel with White lit LED SRT logo
- Wildwood Alcantara steering wheel
- Brake calipers—Red, Black, Gunmetal, Orange, Blue and Yellow
- Exterior badging—Black, Brass Monkey, Red and Satin Chrome
- Bright fuel-filler door
- Cargo net
- Dual stripes—Blue, Carbon, Gunmetal, Red and Silver
- Scat Pack stripe
- Interior accents—Dub Plate, Hectic Mesh, Dark Engine Turn, Real Carbon Fiber and Copper Weave Carbon Fiber
- Floor mat binding—Grey, Red and Sepia
- Gloss Black-painted roof
- Satin Black-painted hood/trunk/spoiler
- Satin Black-painted hood
- Driver Convenience Group
- Harman Kardon® Audio Group
- Navigation & Travel Group
- Technology Group
- Painted hood
- Power sunroof
- SRT Performance spoiler
- Seat belts—Demonic Red, Sepia and Hammerhead Grey
- Suede headliner
- Uconnect® 4C Navigation with 8.4-inch touchscreen display

## OPTIONS/PACKAGES

- 305/35ZR20 Pirelli P ZERO™ Summer tires
- 3.09 rear axle ratio (8-speed)
- Alcantara steering wheel with Red lit LED SRT logo





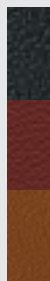
# SRT HELLCAT® REDEYE WIDEBODY JAILBREAK



Sedoso/Houndstooth Premium Cloth (Standard in Black)



Nappa Leather Trim with Alcantara® Inserts with Hellcat Logo and Tungsten Accent Stitching (Available in Black)



Laguna Leather Trim with Laguna Perforated Inserts with Embossed Hellcat Logo (Available in Black, Black/Demonic Red, Black/Hammerhead Grey, Black/Sepia)



Laguna Leather Trim with Alcantara Perforated Inserts with Hellcat Logo and Tungsten Accent Stitching (Available in Black)



20 by 9.5-inch Low-Gloss Black with Knurled Bead // (WPJ) Standard



20 by 11-inch Carbon Black Warp-Speed // (WHW) Available



20 by 11-inch Carbon Black Lightweight // (WHP) Available



20 by 11-inch Brass Monkey Widebody // (WDF) Available



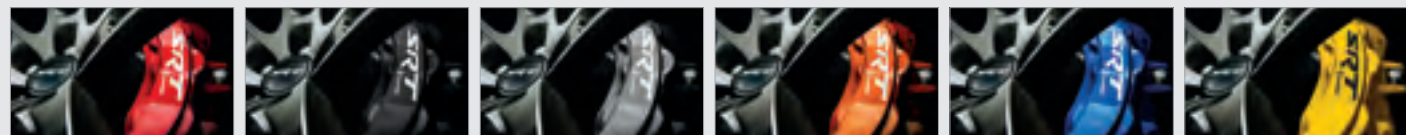
20 by 11-inch Satin Carbon Warp-Speed // (WF9) Available



20 by 11-inch Devil's Rim // (WSC) Available



20 by 11-inch Lightweight Granite // (WHE) Available



Brake calipers shown in Red // Standard

Brake calipers shown in Black // Available

Brake calipers shown in Gunmetal // Available

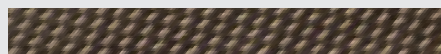
Brake calipers shown in Orange // Available

Brake calipers shown in Blue // Available

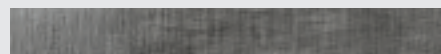
Brake calipers shown in Yellow // Available



Dub Plate interior accents; Standard



Copper Weave Carbon Fiber interior accents; Available



Dark Engine Turn interior accents; Available



Real Carbon Fiber interior accents; Available



Hectic Mesh interior accents; Available

## STANDARD

- Supercharged 6.2L high-output engine
- 807 hp and 707 lb-ft of torque
- SRT Power Chiller®
- 2.62 rear axle ratio (8-speed)
- 305/35ZR20 All-Season tires
- Widebody competition suspension
- Widebody fender flares
- Redeye decklid badge
- Redeye fender badge
- Redeye grille badge
- Satin Black Challenger decklid badge
- Satin Black Dodge taillamp badge
- 220-mph speedometer
- Black door trim panels
- Black-edged premium floor mats
- High-performance engine controller
- Jailbreak instrument-panel badge
- Black seat belts
- SiriusXM® Radio<sup>7</sup> (6-month trial subscription)

## OPTIONS/PACKAGES

- 305/35ZR20 Pirelli® P ZERO™ Summer tires
- 3.09 rear axle ratio (8-speed)
- Alcantara steering wheel with Red lit LED SRT® logo
- Alcantara steering wheel with White lit LED SRT logo
- Wildwood Alcantara steering wheel
- Brake calipers—Red, Black, Gunmetal, Orange, Blue and Yellow
- Exterior badging—Black, Brass Monkey, Red and Satin Chrome
- Bright fuel-filler door
- Cargo net

- Dual stripes—Blue, Carbon, Gunmetal, Red and Silver
- Scat Pack stripe
- Interior accents—Dub Plate, Copper Weave Carbon Fiber, Hectic Mesh, Dark Engine Turn and Real Carbon Fiber
- Floor mat binding—Grey, Red and Sepia
- Gloss Black-painted roof
- Satin Black-painted hood/roof/trunk/spoiler
- Satin Black-painted hood
- Driver Convenience Group
- Harman Kardon® Audio Group
- Navigation & Travel Group
- Technology Group
- Painted hood
- Power sunroof
- SRT Performance spoiler
- Sedoso/Houndstooth cloth seats with Hellcat logo
- Laguna leather-trimmed Performance seats with Hellcat logo
- Alcantara/Laguna leather-trimmed Performance seats with Hellcat logo
- Seat belts—Demonic Red, Sepia and Hammerhead Grey
- Suede headliner
- Uconnect® 4C Navigation with 8.4-inch touchscreen display





# JAILBREAK: ONCE FORBIDDEN, NOW PERMITTED:

**SET YOURSELF FREE** // Exclusive to the SRT Hellcat® Widebody and SRT Hellcat Redeye Widebody models, the available Jailbreak Package unlocks 10 additional horsepower and creates a Challenger that's uniquely yours. Jailbreak unleashes more color availability, previously restricted color combinations and, for the first time, a choice of badge colors. Buyers can also choose their wheels, stripes, interior seating and exterior color preferences.

**GO TO [WWW.DODGE.COM](http://WWW.DODGE.COM) TO CUSTOMIZE YOUR CHALLENGER**

**5 EXTERIOR BADGE COLORS:** BLACK CHROME, RED, BRASS MONKEY, SATIN CHROME, MIDNIGHT METALLIC.



**CHALLENGER EXTERIOR GRAPHIC OPTIONS:** BLUE DUAL STRIPE, CARBON DUAL STRIPE, GUNMETAL DUAL STRIPE, RED DUAL STRIPE, SILVER DUAL STRIPE, SRT HELLCAT SATIN BLACK-PAINTED HOOD, SATIN BLACK-PAINTED ROOF, SATIN BLACK-PAINTED HOOD/ROOF/DECKLID, SCAT PACK STRIPE, SRT® WIDEBODY STRIPE.



**ADDITIONAL INTERIOR OPTIONS:**

**2 DRIVER AIR BAG BADGES:** RED/LIT, WHITE/LIT

**5 APPLIQUÉ FINISHES:** DUB PLATE, HECTIC MESH, DARK ENGINE TURN, CARBON FIBER, COPPER WEAVE

**2 STEERING WHEEL WRAP OPTIONS:** LEATHER, ALCANTARA®

**2 HEADLINER/A-PILLAR OPTIONS:** TWILL, ALCANTARA

**4 FLOOR BINDING COLORS:** BLACK, SEPIA, DEMONIC RED, HAMMERHEAD GREY

**4 SEAT BELT COLORS:** BLACK, SEPIA, DEMONIC RED, HAMMERHEAD GREY

**ADDITIONAL EXTERIOR OPTIONS:**

**6 BRAKE CALIPER COLOR OPTIONS:** RED, ORANGE, BLACK, GUNMETAL, YELLOW, BLUE

**2 EXHAUST TIP OPTIONS:** CHROME, BLACK

**2 FUEL DOOR OPTIONS:** CHROME, BLACK

**2 SPOILER OPTIONS:** STANDARD, PERFORMANCE



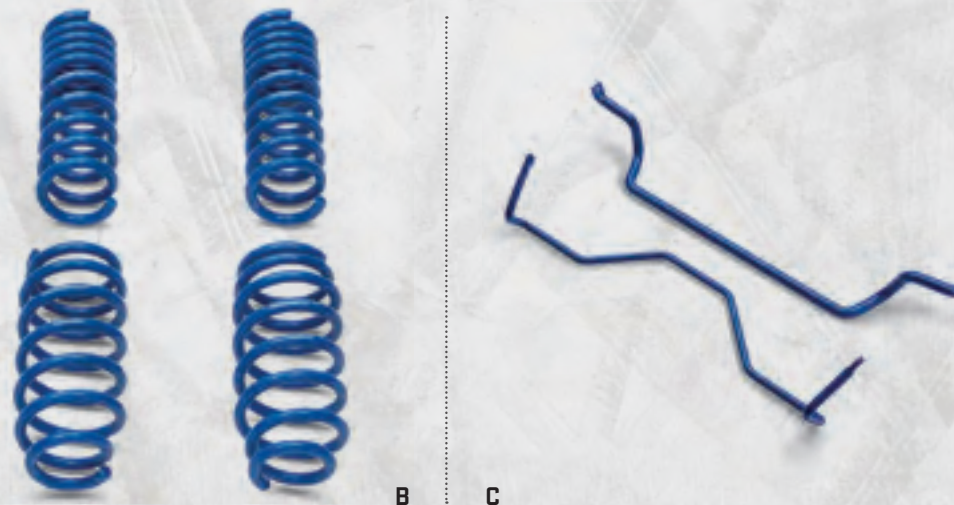


/ A /

When it comes to Challenger, not all parts and accessories are created equal. As the official provider for the Dodge Brand, only Dodge Challenger Mopar® Parts and Accessories can ensure the proper fit, finish and functionality. That's because they're original equipment, engineered by the same people who designed your vehicle, which means you can personalize your ride with complete confidence. Learn more at [mopar.com](http://mopar.com)

**MOPAR ACCESSORIES** // // //

A) SRT Hellcat® Graphic; B) Stage 1 Performance Springs<sup>15</sup>; C) Antisway Bar Kit<sup>15</sup>



# DODGE GOODS

AVAILABLE AT  
**DODGE LIFE**

[dodge.com/life](http://dodge.com/life)



Our Brand is fueled by the loyal enthusiasts, the ones who view their vehicles as an extension of themselves. Check out an extensive line of gifts and accessories for the Dodge enthusiast. From authentic apparel to die-cast replica cars for the collector, as well as electronics and drinkware, all lifestyle items are as bold as your Dodge vehicle.



available at  
**amazon**

[Amazon.com/dodgestore](http://Amazon.com/dodgestore)



# FACTORY-BACKED PERFORMANCE AT YOUR FINGERTIPS



**MAKE YOUR MARK //** We're empowering members of the Brotherhood who are looking for increased performance without violating emission requirements or their factory warranty. Introducing Direct Connection performance parts, brought to you exclusively through Dodge Power Brokers—elite dealers who are experts in performance and who speak the language through and through. Only Dodge Power Brokers can connect you with our entire line of factory-backed Direct Connection performance parts.<sup>16</sup> Learn more at [dcperformance.com](https://dcperformance.com)



**THE DODGE GARAGE** Pull into the Dodge Garage and fill up on the latest muscle car and racing news gathered from hundreds of Web sites and forums. Use the quick links to access the latest from the Dodge Brand's digital and social channels, including YouTube, Facebook, Twitter and Instagram. Shop for must-have Dodge wearables and merchandise and download free iconic-image wallpaper for your devices. Floor it over to [dodgegarage.com](http://dodgegarage.com) and be part of the Brotherhood of Muscle.



**1 3 5 R**  
**HH DODGE GARAGE**  
**2 4 6**

# RADFORD

R A C I N G S C H O O L

Take ownership of a new Dodge // SRT® vehicle and we'll help you learn how to properly handle its power and capabilities with confidence in a safe environment. Included in your purchase is a one-day SRT Experience Class at Radford Racing School. Submit your qualifying VIN within the first 12 months of taking delivery to begin the registration process. See your dealer for more information.





## DODGE CHALLENGER // 800-4ADODGE

Dodge is a registered trademark of FCA US LLC. // 74-383-2334 [12/22]

[1] Based on FCA US LLC muscle car segment and horsepower. Competitor information based upon latest available manufacturer specifications. Excludes other FCA US LLC vehicles. [2] Always drive carefully, consistent with conditions. Always wear your seat belt and obey traffic laws. [3] Always check entire surroundings visually before proceeding. [4] Always check visually for vehicles prior to changing lanes. [5] This system is a driver convenience system, not a substitute for active driver involvement. The driver must remain aware of traffic conditions and be prepared to use the brakes to avoid collisions. [6] This system is solely an alert system for the front of the vehicle that does not take any actions to change vehicle dynamics to avoid a collision, not a substitute for active driver involvement. The driver must remain aware of traffic conditions and be prepared to use the brakes to avoid collisions. [7] Your service will automatically stop at the end of your trial subscription unless you decide to continue service. **If you do not wish to enjoy your trial subscription, you can cancel it by calling the number below. If you decide to continue service after your trial subscription, the subscription plan you choose will automatically renew thereafter and you will be charged according to your chosen payment method at then-current rates.** Fees and taxes apply. Please see our Customer Agreement at [www.siriusxm.com](http://www.siriusxm.com) for complete terms and how to cancel, which includes calling us at 1-866-635-2349. All fees, content and features are subject to change. [8] All SiriusXM Guardian equipped vehicles come with a 12-month complimentary trial effective on the date of purchase or lease of a new vehicle. Enrollment in the trial is required to receive service. Upon expiration of the trial period, purchase of a subscription is required to continue SiriusXM Guardian. SiriusXM Guardian is available only on equipped vehicles purchased within the United States and Puerto Rico. Services can only be used where cellular coverage is available. See Uconnect and SiriusXM Guardian Terms of Service for complete service limitations. [9] You are responsible for using remote features in accordance with any laws, rules or ordinances in effect in your vehicle's location. You must have an active subscription to SiriusXM Guardian in order to use remote services. See Terms of Service for service limitations. [10] Requires compatible iPhone. See dealer for phone compatibility. Data plan rates apply. Vehicle user interface is a product of Apple. Apple CarPlay is a trademark of Apple Inc. iPhone is a trademark of Apple Inc., registered in the US and other countries. Apple terms of use and privacy statements apply. [11] To wirelessly use Android Auto on your car display, you need a compatible Android smartphone with an active data plan. Android and Android Auto are trademarks of Google LLC. [12] Always sit properly in designated seating positions with seat belts securely fastened at all times. [13] Vehicle must be locked and system activated for alarm to sound. [14] Check state and local laws regarding the use of remote start systems. [15] Mopar Performance Parts are sold "as is" unless otherwise noted. [16] Full warranty details and additional information available at [www.dcpowertrain.com/warranty](http://www.dcpowertrain.com/warranty) and participating Dodge Power Brokers dealers. [17] Visit [Mopar.com](http://Mopar.com) for complete details and a copy of the Powertrain Limited Warranty.

©2022 FCA US LLC. All Rights Reserved. Dodge, Mopar, SRT, Air-Catcher, Blacktop, Challenger, Charger, Durango, the Hellcat logo, HEMI, 392 HEMI, ParkSense, ParkView, Pentastar, R/T, Scat Pack and Scat Pack logo, SRT Hellcat, SRT Power Chiller, SXT, TorqueFlite and Uconnect are registered trademarks, and Keyless Enter 'n Go is a trademark of FCA US LLC.

Alpine is a registered trademark of Alpine Electronics, Inc. Alcantara is a registered trademark of Alcantara S.p.A. Amazon and all related logos and marks are trademarks of Amazon.com, Inc., or its affiliates. Bilstein is a registered trademark of August-Bilstein GmbH & Co. Brembo is a registered trademark of Freni Brembo SpA. Harman Kardon is a registered trademark and GreenEdge is a trademark of Harman International Industries, Inc. Pirelli is a registered trademark and P ZERO is a trademark of Pirelli Tyre S.p.A. TREMEC is a registered trademark of Transmisiones Y Equipos Mecanicos, S.A. de C.V. Apple CarPlay is a registered trademark of Apple Inc. Instagram and logo are registered trademarks of Instagram, Inc. SiriusXM Connected Vehicles Services Inc., Sirius, XM, SiriusXM, SiriusXM Guardian, and all related marks and logos are registered trademarks of SiriusXM Radio Inc. Facebook and logo are registered trademarks of Meta Platforms, Inc. The Twitter logo is a service mark of Twitter, Inc. YouTube is a registered trademark and Google, Android, Android Auto and other marks are trademarks of Google LLC. Nitto is a registered trademark of Nitto Tire Corporation Inc.

This brochure is a publication of FCA US LLC. All product illustrations and specifications are based upon current information at the time of publication approval. FCA US LLC reserves the right to make changes from time to time, without notice or obligation, in prices, specifications, colors and materials, and to change or discontinue models which are considered necessary to the purpose of product improvement or for reasons of design and/or marketing.

5 YEAR / 60,000 MILE<sup>17</sup>  
POWERTRAIN LIMITED WARRANTY



DODGE

DODGE.COM