

2023 GMC

ACADIA



GMC

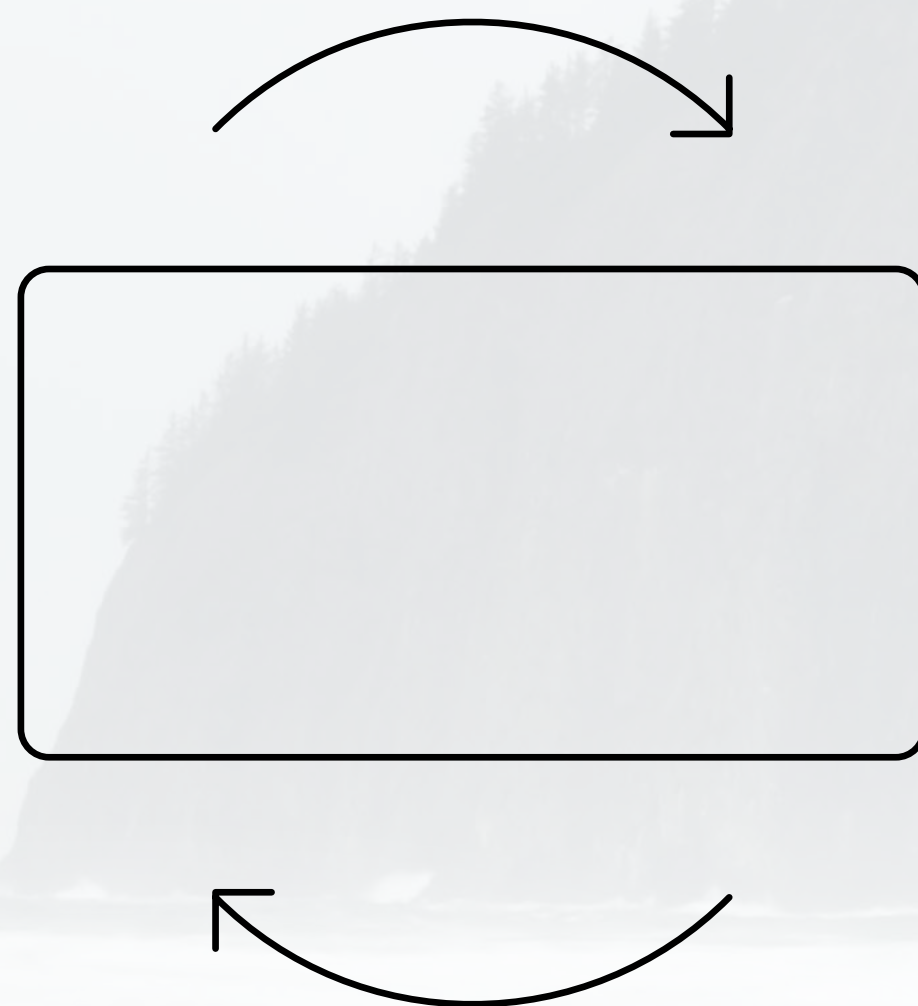
NAVIGATION GUIDE

3

CLICK THE HOME BUTTON TO RETURN TO THE TABLE OF CONTENTS.



1



ROTATE FOR A BETTER VIEWING EXPERIENCE.

2

CLICK ON UNDERLINED TEXT TO REVEAL IMPORTANT LEGAL INFORMATION.

— USB Ports¹



4

CLICK THE X TO CLOSE DISCLOSURES.

¹Not compatible with all devices.



ACADIA

CONTENTS

CLICK ANY TITLE TO EXPLORE A SPECIFIC CHAPTER.

3

INTRODUCTION

22

ELEVATION EDITION

30

CONNECTIVITY

37

ACCESSORIES

6

DENALI

23

VERSATILITY

34

EXTERIOR COLORS

41

IMPORTANT WORDS
AND LEGAL DISCLOSURES

13

AT4

25

CAPABILITY

35

INTERIOR COLORS
AND TEXTURES

18

SLT

27

SAFETY AND
TECHNOLOGY

36

WHEELS

MEET THE 2023 GMC ACADIA

Take on what comes your way in the premium and capable Acadia.



Due to current supply-chain shortages, certain features shown throughout this catalog, including on the cover, have limited or late availability, or are no longer available. See the window label or a dealer regarding the features on an individual vehicle.



ACADIA KEEPS UP WITH THE SPEED OF YOUR LIFE

With refined style, three rows of versatile seating, available advanced technologies and powerful performance, Acadia is designed to help you make the most of every moment.

Due to current supply-chain shortages, certain features shown have limited or late availability, or are no longer available. See the window label or a dealer regarding the features on an individual vehicle.



THERE'S AN ACADIA FOR EVERY MOMENT



SLT shown.

Acadia SLE and **Acadia SLT** stand out proudly everywhere they go.



Acadia AT4 is made to leave limitations behind.



Acadia Denali is the pinnacle of Professional Grade premium amenities and capability.



TRAVEL FIRST-CLASS

Experience Denali's luxurious high-end finishes, advanced technology and distinctive refined style.



Due to current supply-chain shortages, certain features shown have limited or late availability, or are no longer available. See the window label or a dealer regarding the features on an individual vehicle.



**UPGRADE YOUR TRAVELS
WITH ACADIA DENALI**

Due to current supply-chain shortages, certain features shown have limited or late availability, or are no longer available. See the window label or a dealer regarding the features on an individual vehicle.

SIGNATURE DENALI STYLE

Carefully considered details are the epitome of contemporary GMC luxury.

- Embroidered Denali Front-Seat Head Restraints
- Heated and Ventilated Front Seats
- Heated Second-Row Outboard Seats



PREMIUM IN EVERY WAY

- Real Ash Wood and Burnished Aluminum Trim
- Heated and Ventilated Perforated Leather-Appointed Front Seats
- French Seam Stitching and Embroidered Front-Seat Head Restraints
- Bose® Premium Eight-Speaker Audio System With Subwoofer
- Dual SkyScape Sunroof Is Available



Due to current supply-chain shortages, certain features shown have limited or late availability, or are no longer available. See the window label or a dealer regarding the features on an individual vehicle.





Due to current supply-chain shortages, certain features shown have limited or late availability, or are no longer available. See the window label or a dealer regarding the features on an individual vehicle.



Bold functionality and aggressive details create a powerful presence that stands out everywhere your day takes you.

- Bright Chrome Accents and Body-Color Lower Molding
- LED Headlamps and Taillamps With Signature C-Shape Design

- Hands-Free Programmable Power Liftgate With GMC Logo Projection
- 20" Ultra-Bright Machined Aluminum Wheels



Acadia Denali delivers the power you need.

- 3.6L V6 Engine Is Standard With 310 hp and 271 lb-ft of Torque
- Active Fuel Management
- Tow up to 4,000 lbs¹ When Properly Equipped
- Adaptive Ride Control Is Available on AWD
- 2.0L 4-Cylinder Turbo Engine Is Available



Due to current supply-chain shortages, certain features shown have limited or late availability, or are no longer available. See the window label or a dealer regarding the features on an individual vehicle.

INTUITIVE TECH

Advanced driver-centric technologies help keep you seamlessly connected.

- 6" Diagonal Color Head-Up Display
- GMC Infotainment System¹ With Navigation²
- Rear Camera Mirror³ Is Available
- Adaptive Cruise Control³ Is Available



Due to current supply-chain shortages, certain features shown have limited or late availability, or are no longer available. See the window label or a dealer regarding the features on an individual vehicle.





ADVENTURE IS OUT THERE. GO FIND IT IN ACADIA AT4.

Go beyond the boundaries and explore unpaved backcountry with Acadia AT4's authentic capability.



Due to current supply-chain shortages, certain features shown have limited or late availability, or are no longer available. See the window label or a dealer regarding the features on an individual vehicle.



AT4

Acadia offers performance technologies such as the Active Torque Control AWD System and Traction Select System—which allows you to choose drive modes at the turn of a switch, including Off-Road mode for improved traction and driving dynamics on low-traction surfaces such as dirt, gravel or sand.

- Active Torque Control AWD System
- 3.6L V6 Engine With 310 hp
- Traction Select System With Off-Road Mode
- Hill Start Assist and Hill Descent Control

Due to current supply-chain shortages, certain features shown have limited or late availability, or are no longer available. See the window label or a dealer regarding the features on an individual vehicle.



Due to current supply-chain shortages, certain features shown on this spread have limited or late availability, or are no longer available. See the window label or a dealer regarding the features on an individual vehicle.



Confident lines, exclusive wheels and darkened details stand out no matter where Acadia AT4 takes you.

— Black Chrome Grille

— 17" Gloss-Black Painted Aluminum Wheels With All-Terrain Tires

— Unique AT4 Badging

— Black-Capped Mirrors, Black Chrome Accents and Gloss-Black Roof Rails



REFINED FOR THE TRAIL AHEAD

AT4



A unique, athletic interior in cloth or available first- and second-row leather-appointed seats elevates your experience.

- Embroidered AT4 Front-Seat Head Restraints and Embossed Sill Plates
- Heated Front Seats

- Heated Steering Wheel Is Available
- 6" Diagonal Color Head-Up Display and High Definition Surround Vision¹ Are Available

Due to current supply-chain shortages, certain features shown have limited or late availability, or are no longer available. See the window label or a dealer regarding the features on an individual vehicle.



ELEVATE EVERY DAY WITH **ACADIA SLT**

Acadia SLT delivers all the style, refinement and capability you could want in a midsize SUV.



Due to current supply-chain shortages, certain features shown have limited or late availability, or are no longer available. See the window label or a dealer regarding the features on an individual vehicle.

SLT



Acadia SLT's sculpted exterior is highlighted by LED headlamps and taillamps, as well as an integrated chrome grille.

- LED Headlamps and Taillamps With Signature C-Shape Design
- 18" Aluminum Wheels or Available 20" Machined Aluminum Wheels With Dark Accents
- Heated Power-Adjustable Mirrors With Integrated LED Turn Signals
- Brushed Aluminum Roof Rails and Chrome Accents on the Grille and Fog Lamp Surround





ACCOMMODATIONS DESIGNED TO FEEL AS GOOD AS THEY LOOK

Due to current supply-chain shortages, certain features shown have limited or late availability, or are no longer available. See the window label or a dealer regarding the features on an individual vehicle.

AN EXCEPTIONAL EXPERIENCE

- GMC Pro Safety Plus¹
- Heated Leather-Appointed Front Seats
- Keyless Open and Start
- Tri-Zone Automatic Climate Control
- GMC Infotainment System² With Navigation³
- Heated Steering Wheel Is Available





The Acadia Elevation Edition adds dark styling details to Acadia SLE and Acadia SLT, creating a unique, sophisticated appearance.

ACADIA ELEVATION EDITION INCLUDES:

- Black Grille Insert and Surround
- Black Mirror Caps and Gloss-Black Roof Rails
- 20" Gloss-Black Painted Aluminum Wheels
- 20" All-Season Blackwall Tires
- Black Front and Rear GMC Badges Are Available





79 CU. FT.



THREE ROWS. INFINITE POSSIBILITIES.

Live life to the fullest in style and comfort with Acadia's available spacious seating for up to seven or 79 cu. ft. of flexible max cargo space.¹



The second-row Smart Slide seats offer easy access to the third row with just one hand. Fold the second and third rows flat, and Acadia gives you up to 79 cu. ft. of highly versatile max cargo space.¹

Hands full? An available hands-free programmable power liftgate with GMC logo projection is available.

- Three Rows Including Smart Slide Second-Row Seating
- Fold-Flat Second- and Third-Row Seats
- Covered Under-Floor Cargo-Area Storage



ADVANCED CAPABILITY

Travel with confidence and control thanks to Acadia's robust available powertrains and performance technologies.

3.6L V6

- 310 hp/271 lb-ft of Torque
- Standard on AT4/Denali
- Available on SLT

2.0L TURBO

- 228 hp/258 lb-ft of Torque
- Standard on SLE/SLT
- Available on Denali

Due to current supply-chain shortages, certain features shown have limited or late availability, or are no longer available. See the window label or a dealer regarding the features on an individual vehicle.



Due to current supply-chain shortages, certain features shown have limited or late availability, or are no longer available. See the window label or a dealer regarding the features on an individual vehicle.

TRACTION SELECT SYSTEM

- Switch Among up to Five Specific Modes (Depending on the Model) to Tailor Your Ride to Differing Road Conditions
- Traction Select System Is Standard on All Trims

ADAPTIVE RIDE CONTROL

- A Continuous Damping Control Suspension System Adjusts Shock Absorbers to the Road Surface Every 2 Milliseconds to Deliver a Smoother Ride
- Available on Denali AWD

TOWING CAPABILITY

- Max Towing of 3,500 lbs¹ With 2.0L Engine Is Available
- Max Towing of 4,000 lbs¹ With 3.6L Engine Is Available
- Hitch Guidance With Hitch View² Is Available



GMC PRO SAFETY PLUS: A HIGH STANDARD OF CONFIDENCE

Enjoy the confidence of GMC Pro Safety Plus, a suite of advanced safety features standard on Acadia, to help alert you to potential dangers.

Safety or driver-assistance features are no substitute for the driver's responsibility to operate the vehicle in a safe manner. The driver should remain attentive to traffic, surroundings and road conditions at all times. Visibility, weather and road conditions may affect feature performance. Read the vehicle Owner's Manual for more important feature limitations and information.





GMC PRO SAFETY PLUS

GMC PRO SAFETY PLUS INCLUDES:

- Lane Change Alert With Side Blind Zone Alert
- Lane Keep Assist With Lane Departure Warning
- Rear Cross Traffic Alert
- Automatic Emergency Braking
- Forward Collision Alert
- Following Distance Indicator
- Front Pedestrian Braking
- IntelliBeam—Auto High Beams
- Rear Park Assist (Feature Will Not Function on Certain Models Without Dealer Retrofit; See Dealer for Details)

Learn more about Acadia's safety technologies at gmc.com/acadia/safety. Safety or driver-assistance features are no substitute for the driver's responsibility to operate the vehicle in a safe manner. The driver should remain attentive to traffic, surroundings and road conditions at all times. Visibility, weather and road conditions may affect feature performance. Read the vehicle Owner's Manual for more important feature limitations and information.



Rear Park Assist will not function on certain models without dealer retrofit. See dealer for details.



ACADIA OFFERS:

— Enhanced Automatic Emergency Braking¹ Is Available (Denali Only)

— Rear Camera Mirror¹ Is Available (Denali Only)

— 6" Diagonal Color Head-Up Display Is Available

— High Definition Surround Vision¹ Is Available



Due to current supply-chain shortages, certain features shown have limited or late availability, or are no longer available. See the window label or a dealer regarding the features on an individual vehicle.



KEEP YOUR CONNECTIONS STRONG

Three years of the OnStar® and Connected Services Premium Plan¹ are included on select Acadia models. With this plan, eligible vehicles² can enjoy the added peace of mind of the OnStar Safety & Security Plan³ and the complete suite of available connectivity features included in the Connected Vehicle Plan.⁴

ONSTAR AND CONNECTED SERVICES PREMIUM PLAN INCLUDES:

- In-Vehicle App⁵ Access
- In-Vehicle Wi-Fi® Hotspot Data⁶
- OnStar Guardian™ app⁷
- myGMC Mobile App⁸
- Automatic Crash Response⁹
- Emergency Services
- Crisis Assist
- Roadside Assistance¹⁰
- Stolen Vehicle Assistance¹¹
- Alexa Built-in¹²



Due to current supply-chain shortages, certain features shown have limited or late availability, or are no longer available. See the window label or a dealer regarding the features on an individual vehicle.

HELP WHEN YOU NEED IT

With 3 years¹ of OnStar Safety and Security, you'll have added peace of mind knowing an Emergency-Certified Advisor² is ready to help. Whether it's a crash, a vehicle theft or an emergency situation, help is available 24/7.

The Safety & Security Plan³ includes the OnStar Guardian app,⁴ which lets you access the key OnStar safety services you depend on right from your phone. Help in a crash, assistance with a flat tire and more are available through your smartphone. Best of all, you can share OnStar Guardian with up to seven of your loved ones at no additional cost.



KEEP CONNECTED

- Wireless Apple CarPlay® Compatibility¹
- Wireless Android Auto™ Compatibility²
- Wireless Charging³ Is Available
- GMC Infotainment System⁴ With Navigation⁵ Is Available
- Bose Premium Eight-Speaker Audio System With Subwoofer Is Available





EXPLORE MORE, ALEXA'S ON BOARD

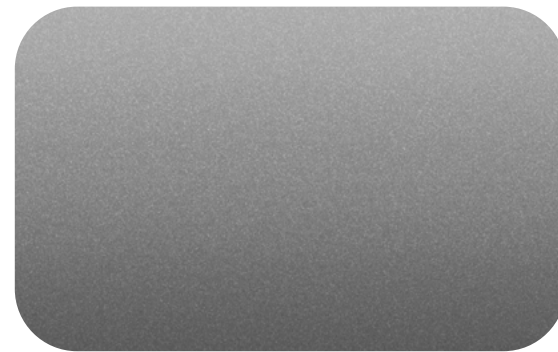
Alexa functionality is integrated into your GMC Infotainment System.¹ With available Amazon Alexa Built-in,² you can ask Alexa to stream your favorite music services such as Spotify^{®3} or Amazon Music, get directions, make calls, change your radio station and get routes to the nearest dealership—on the go. Alexa can also make shopping lists, play and resume audiobooks and get the score to last night's game.



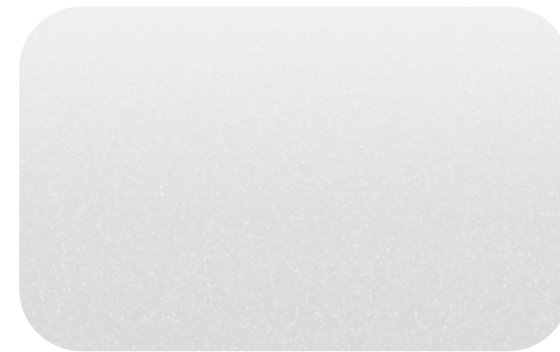
FIND YOUR TRUE COLORS



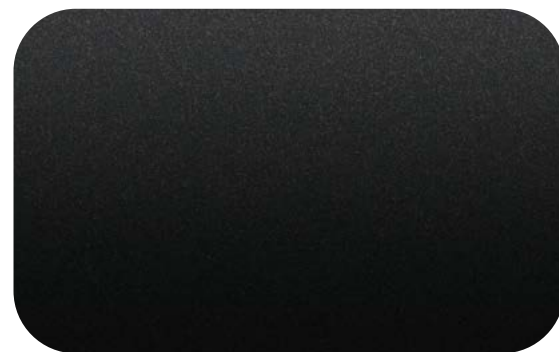
WHITE FROST
TRICOAT^{1,2}



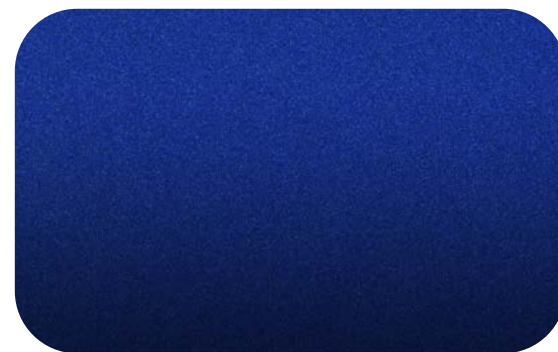
STERLING
METALLIC^{1,2}



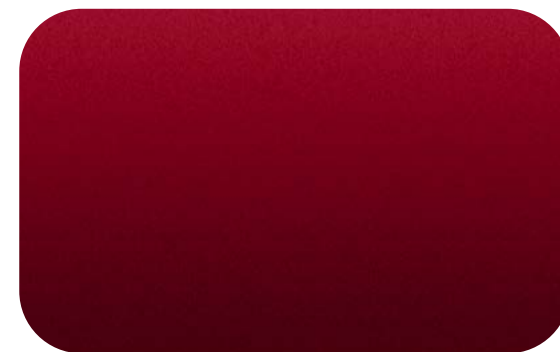
SUMMIT
WHITE



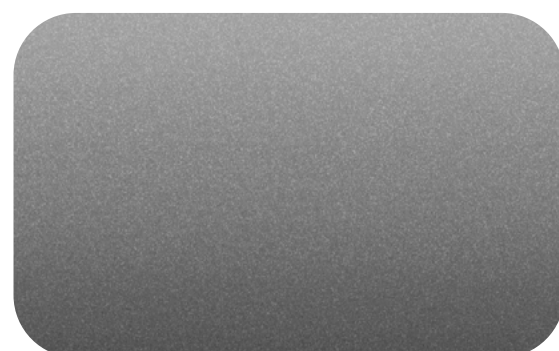
EBONY TWILIGHT
METALLIC¹



ULTRA BLUE
METALLIC¹



VOLCANIC RED
TINTCOAT¹



LIGHT STONE
METALLIC^{1,3}



HUNTER
METALLIC^{1,4}



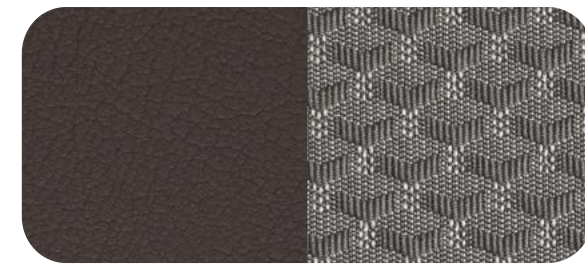
Denali shown in Hunter Metallic.

See your GMC dealer or gmc.com for more exterior color details.

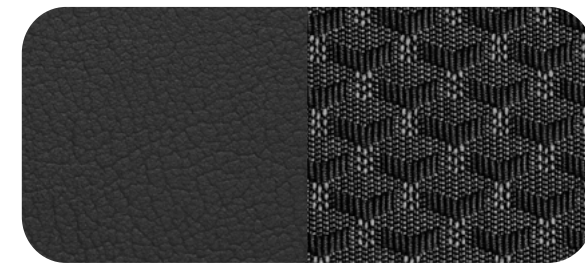
Due to current supply-chain shortages, certain features shown have limited or late availability, or are no longer available. See the window label or a dealer regarding the features on an individual vehicle.



SLE



COCOA/LIGHT ASH GRAY CLOTH



JET BLACK/JET BLACK CLOTH

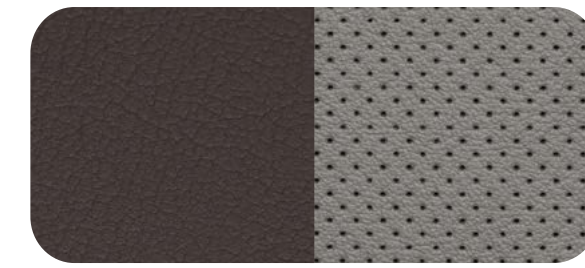


TIMBERLINE WOOD TONE



AXIOM ALUMINUM

SLT



COCOA/LIGHT ASH GRAY PERFORATED FRONT LEATHER-APPOINTED



JET BLACK/JET BLACK PERFORATED FRONT LEATHER-APPOINTED

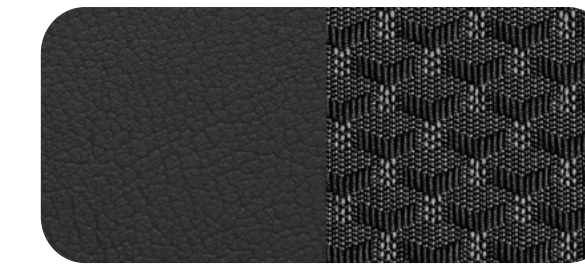


LUXURY BROWN WOOD TONE



AXIOM ALUMINUM

AT4



JET BLACK/JET BLACK CLOTH



JET BLACK/JET BLACK PERFORATED FRONT LEATHER-APPOINTED



ARBITER APPLIQUÉ

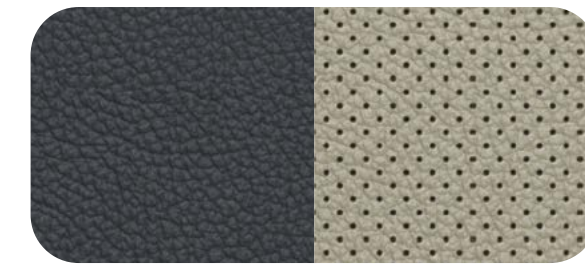


COMBAT ALUMINUM



DARK ALUMINUM

DENALI



DARK GALVANIZED/LIGHT SHALE PERFORATED FRONT LEATHER-APPOINTED



JET BLACK/JET BLACK PERFORATED FRONT LEATHER-APPOINTED



ASH WOOD



BURNISHED ALUMINUM



PRECISION-CRAFTED FROM THE GROUND UP



17"

**17" GLOSS-BLACK
PAINTED ALUMINUM (Q7D)**
Standard on AT4



18"

**18" MACHINED ALUMINUM
WITH DARK ACCENTS (5PB)**
Standard on SLE



18"

18" ALUMINUM (RQJ)
Standard on SLT



20"

**20" GLOSS-BLACK
PAINTED ALUMINUM
(QGY)** Standard on
Elevation Edition



20"

**20" MACHINED
ALUMINUM WITH
DARK ACCENTS
(Q9P)** Available on SLT



20"

**20" ULTRA-BRIGHT
MACHINED
ALUMINUM (SUE)**
Standard on Denali



20"

**20" ALUMINUM
WITH AFTER
MIDNIGHT FINISH
(QH8)** Standard on
Black Diamond Edition



PERSONALIZE YOUR ACADIA— INSIDE AND OUT

GMC Accessories are designed and engineered to meet the Professional Grade standards you demand. We also offer accessories from a lineup of other renowned and proven manufacturers. Find a full selection of Acadia accessories at gmc.com/accessories.



Accessory roof rack crossrails and upright bicycle carrier by Thule®. Due to current supply-chain shortages, certain features shown have limited or late availability, or are no longer available. See the window label or a dealer regarding the features on an individual vehicle.



ACCESSORY ROOF RACK CROSSRAILS



ACCESSORY SPORTZ COVE AWNING, ROOF RACK CROSSRAILS, ROOF-MOUNTED CARGO BASKET AND CARGO NET



Due to current supply-chain shortages, certain features shown have limited or late availability, or are no longer available. See the window label or a dealer regarding the features on an individual vehicle.

ACCESSORY AUTOMATIC TRANSMISSION SPORT PEDAL COVER PACKAGE AND FIRST-ROW PREMIUM ALL-WEATHER FLOOR MATS



ACCESSORY MOLDED ASSIST STEP WITH FRONT SPLASH GUARD



Find a full selection of Acadia accessories at gmc.com/accessories.



POWERED BY PROFESSIONAL GRADE



SIERRA 1500



CANYON



SIERRA HEAVY DUTY



HUMMER EV PICKUP



YUKON



TERRAIN



ACADIA

Due to current supply-chain shortages, certain features shown have limited or late availability, or are no longer available. See the window label or a dealer regarding the features on an individual vehicle. Sierra 1500 AT4X shown with available accessories. 2022 Canyon AT4 shown. Reservations for HUMMER EV are currently full.

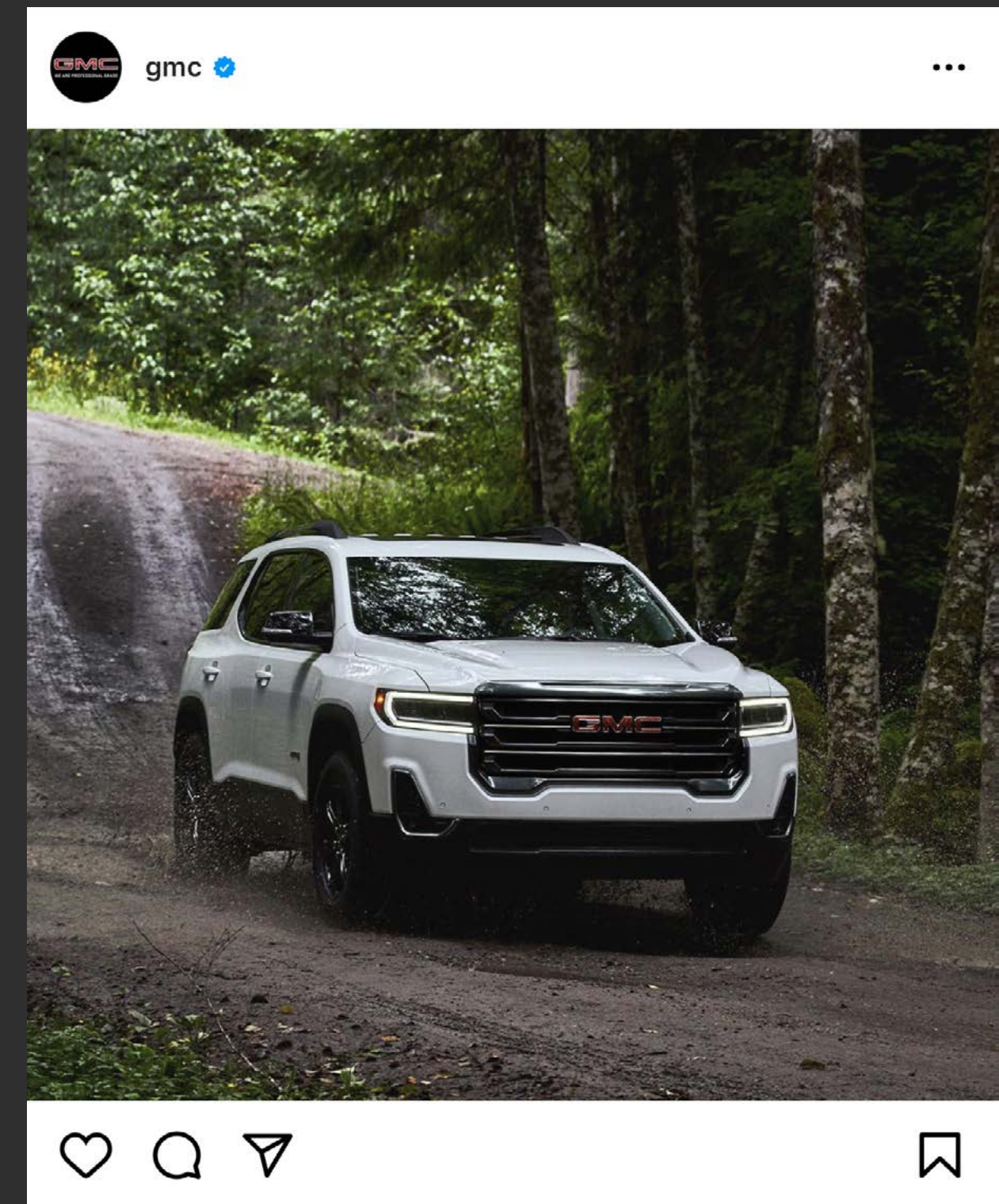
DRIVE THE CONVERSATION

#GMCACADIA | #DENALI | #AT4



Share your GMC experience and get in on the action.

Due to current supply-chain shortages, certain features shown on this spread have limited or late availability, or are no longer available. See the window label or a dealer regarding the features on an individual vehicle.





IMPORTANT WORDS AND LEGAL DISCLOSURES



NEW VEHICLE LIMITED WARRANTY

3-YEAR/36,000-MILE BUMPER-TO-BUMPER LIMITED WARRANTY GMC will warrant each 2023 Acadia from bumper to bumper for 3 years/36,000 miles (whichever comes first; see dealer for details), with no deductible, from the original in-service date of the vehicle, for warrantable repairs that are required as a result of defects due to materials and/or workmanship. Cosmetic corrosion resulting from defects is also covered under the Bumper-to-Bumper Limited Warranty. In addition, rust-through corrosion will be covered for 6 years/100,000 miles (whichever comes first; see dealer for details).

POWERTRAIN LIMITED WARRANTY Every 2023 GMC Acadia comes with a 5-year/60,000-mile (whichever comes first) transferable Powertrain Limited Warranty. 24/7 Roadside Assistance and Courtesy Transportation are also offered for the duration of the Powertrain Limited Warranty. Please see your GMC dealer for details.

ONSTAR AND GMC CONNECTED SERVICES

Connected vehicle services vary by vehicle model and require working electrical system, cell reception and GPS signal. Requires active service plan. OnStar links to emergency services. See onstar.com for details and limitations.

GMC CERTIFIED SERVICE

To help your Acadia live up to its performance promise, GMC Certified Service—found exclusively at your GMC dealer—is there. With all the engineering excellence in Acadia, GM-trained technicians have the expertise to help care for it.

ADDITIONAL NOTES

A NOTE ON CHILD SAFETY Always use seat belts and the correct child restraint for your child's age and size, even with airbags. Even in vehicles equipped with the Passenger Sensing System, children are safer when properly secured in a rear seat in the appropriate infant, child or booster seat. Never place a rear-facing infant restraint in the front seat of any vehicle equipped with an active frontal airbag. See the Owner's Manual and the child safety seat instructions for more safety information.

TRAILERING AND OFF-ROAD DRIVING INFORMATION Please go to gmc.com and carefully review the vehicle Owner's Manual for important safety information about trailering or off-road driving in your vehicle.

FLEET ORDERS Some standard content may be deleted on fleet orders. See dealer for details.

ENGINES GMC products are equipped with engines produced by GM Powertrain or other suppliers to GM worldwide. The engines in GMC products may also be used in other GM makes and models.

GMC.COM See more of Acadia on our website: gmc.com/acadia. More photos and information; hot links to related subjects; convenient dealer locator; pricing guide; spec out your own vehicle. Or call 1-800-GMC-8782.

IMPORTANT WORDS ABOUT THIS CATALOG We have tried to make this catalog comprehensive and factual. We reserve the right, however, to make changes at any time, without notice, in prices, colors, materials, equipment, specifications, models and availability. Specifications, dimensions, measurements, ratings and other numbers in this catalog and other printed materials provided at the dealership or affixed to vehicles are approximations based on design and engineering drawings, prototypes and laboratory tests. Your vehicle may differ due to variations in manufacture and equipment. Since some information may have been updated since the time of publication, please check with your GMC dealer for complete details. GMC reserves the right to lengthen or shorten the model year for any product for any reason or to start and end model years at different times. Certain vehicle features may lose their usefulness over time due to obsolescence from technological changes. Unless otherwise noted, all claims based on GM Mid SUV segment and latest available competitive information available at time of publication. Excludes other GM vehicles.

AN IMPORTANT NOTE ABOUT ALTERATIONS AND WARRANTIES Installations or alterations to the original equipment vehicle (or chassis) as distributed by General Motors are not covered by the General Motors New Vehicle Limited Warranty. The special body company, assembler, equipment installer or upfitter is solely responsible for warranties on the body or equipment and any alterations (or any effect of the alterations) to any of the parts, components, systems or assemblies installed by GM. General Motors is not responsible for the safety or quality of design, features, materials or workmanship of any alterations by such employers.

ASSEMBLY GMC vehicles and their components are assembled or produced by different operating units of General Motors, its subsidiaries or suppliers to GM worldwide. We sometimes find it necessary to produce GMC vehicles with different or differently sourced components than originally scheduled. Since some options may be unavailable when your vehicle is assembled, we suggest you verify that your vehicle includes the equipment you ordered and that, if there were changes, they are acceptable to you.

GMMOBILITY.COM (1-800-323-9935) GM Mobility offers financial assistance for eligible adaptive equipment to make automotive travel easier for persons with disabilities or special transportation needs. To learn more about special GM Mobility offers, visit gmmobility.com.

©2023 General Motors. All rights reserved. GM, the GM logo, GMC, the slogans, emblems, vehicle model names, vehicle body designs and other marks appearing in this catalog are the trademarks and/or service marks of General Motors, its subsidiaries, affiliates or licensors. Facebook is a registered trademark of Meta Platforms, Inc. Twitter is a registered trademark of Twitter, Inc. Instagram is a registered trademark of Instagram, LLC. Sirius, XM and all related marks and logos are trademarks of SiriusXM Radio, Inc. Google, Android, YouTube, Android Auto and other marks are trademarks of Google LLC. Apple, CarPlay, iPhone and Siri are registered trademarks of Apple, Inc.



Acadia Denali delivers the power you need.

- 3.6L V6 Engine Is Standard With 310 hp and 271 lb-ft of Torque
- Active Fuel Management
- Tow up to 4,000 lbs¹ When Properly Equipped
- Adaptive Ride Control Is Available on AWD
- 2.0L 4-Cylinder Turbo Engine Is Available



¹Requires 3.6L V6 engine and available Trailering Package. Maximum trailering ratings are intended for comparison purposes only. Before you buy a vehicle or use it for trailering, carefully review the trailering section of the Owner's Manual. The trailering capacity of your specific vehicle may vary. The weight of passengers, cargo and options or accessories may reduce the amount you can trailer.



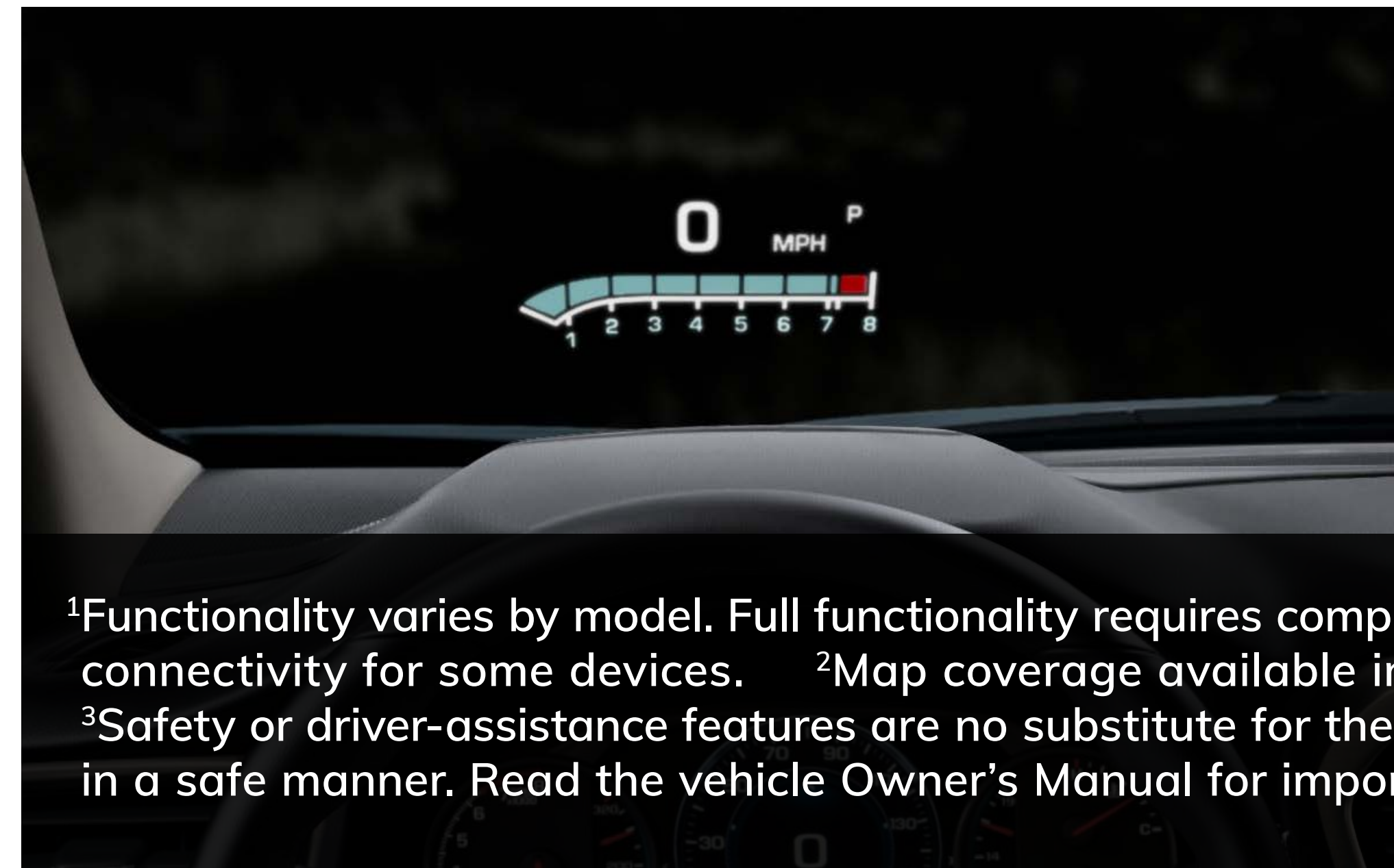
INTUITIVE TECH

Advanced driver-centric technologies help keep you seamlessly connected.

- 6" Diagonal Color Head-Up Display
- GMC Infotainment System¹ With Navigation²
- Rear Camera Mirror³ Is Available
- Adaptive Cruise Control³ Is Available




Due to current supply-chain shortages, certain features shown have limited or late availability, or are no longer available. See the window label or a dealer regarding the features on an individual vehicle.



¹Functionality varies by model. Full functionality requires compatible Bluetooth® and smartphone, and USB connectivity for some devices. ²Map coverage available in the United States, Puerto Rico and Canada. ³Safety or driver-assistance features are no substitute for the driver's responsibility to operate the vehicle in a safe manner. Read the vehicle Owner's Manual for important feature limitations and information.





¹Safety or driver-assistance features are no substitute for the driver's responsibility to operate the vehicle in a safe manner. Read the vehicle Owner's Manual for important feature limitations and information. 

A unique, athletic interior in cloth or available first- and second-row leather-appointed seats elevates your experience.

- Embroidered AT4 Front-Seat Head Restraints and Embossed Sill Plates
- Heated Front Seats

- Heated Steering Wheel Is Available
- 6" Diagonal Color Head-Up Display and High Definition Surround Vision¹ Are Available

Due to current supply-chain shortages, certain features shown have limited or late availability, or are no longer available. See the window label or a dealer regarding the features on an individual vehicle.

AN EXCEPTIONAL EXPERIENCE

- GMC Pro Safety Plus¹
- Heated Leather-Appointed Front Seats
- Keyless Open and Start
- Tri-Zone Automatic Climate Control
- GMC Infotainment System² With Navigation³
- Heated Steering Wheel Is Available



¹GMC Pro Safety Plus: Automatic Emergency Braking, Lane Keep Assist with Lane Departure Warning, Forward Collision Alert, Front Pedestrian Braking, Following Distance Indicator, IntelliBeam, Lane Change Alert with Side Blind Zone Alert, Rear Cross Traffic Alert and Rear Park Assist (feature will not function without dealer retrofit; see dealer for details). Safety or driver-assistance features are no substitute for the driver's responsibility to operate the vehicle in a safe manner. Read the vehicle Owner's Manual for important feature limitations and information. ²Functionality varies by model. Full functionality requires compatible Bluetooth® and smartphone, and USB connectivity for some devices. ³Map coverage available in the United States, Puerto Rico and Canada.



79 CU. FT.



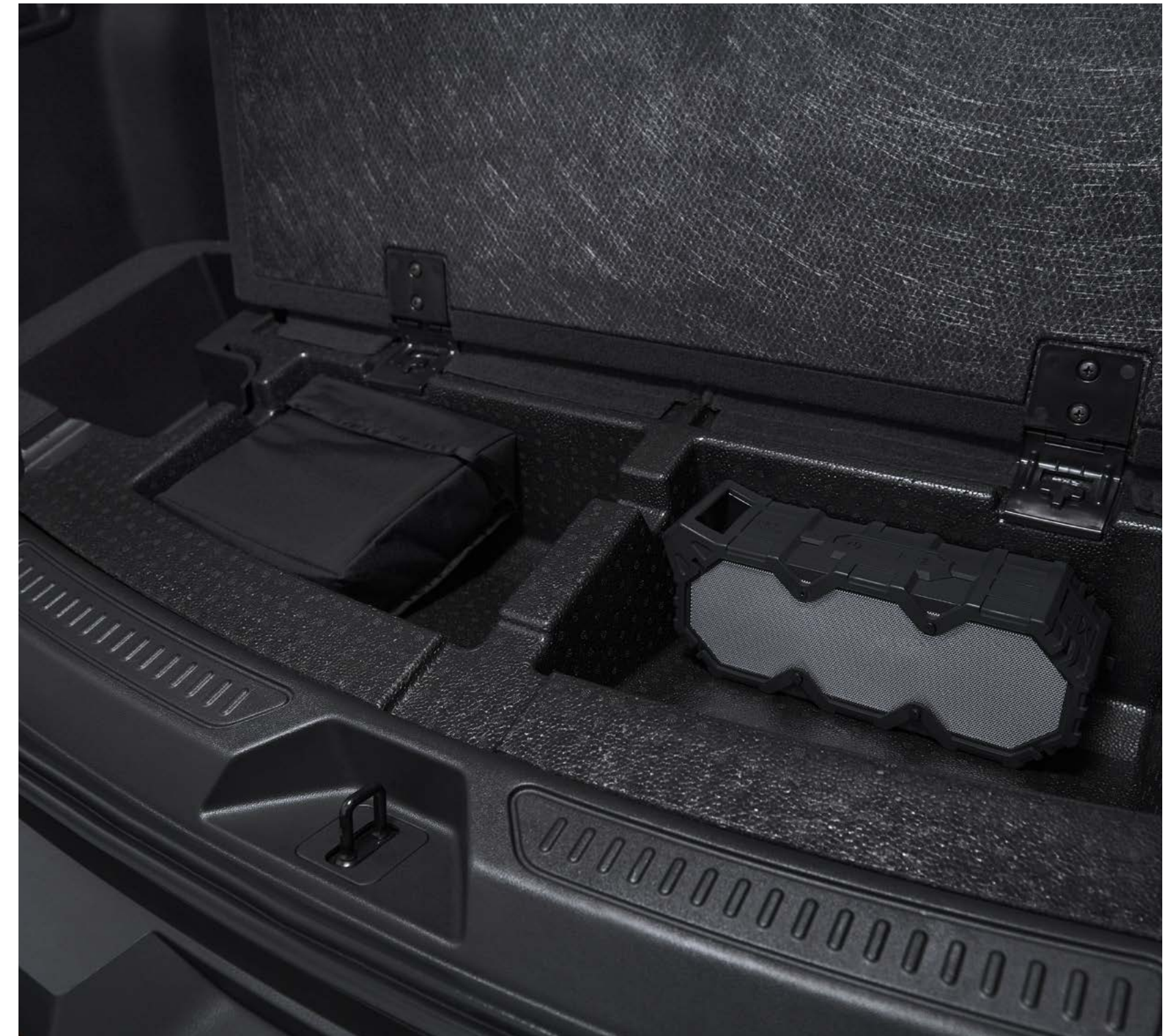
THREE ROWS. INFINITE POSSIBILITIES.

—

Live life to the fullest in style and comfort with Acadia's available spacious seating for up to seven or 79 cu. ft. of flexible max cargo space.¹

¹With rear seats folded flat. Cargo and load capacity limited by weight and distribution.





The second-row Smart Slide seats offer easy access to the third row with just one hand. Fold the second and third rows flat, and Acadia gives you up to 79 cu. ft. of highly versatile max cargo space.¹


Hands full? An available hands-free programmable power liftgate with GMC logo projection is available.

- Three Rows Including Smart Slide Second-Row Seating
- Fold-Flat Second- and Third-Row Seats
- Covered Under-Floor Cargo-Area Storage

¹With rear seats folded flat. Cargo and load capacity limited by weight and distribution.





¹Requires available Trailering Package. Maximum trailering ratings are intended for comparison purposes only. Before you buy a vehicle or use it for trailering, carefully review the trailering section of the Owner's Manual. The trailering capacity of your specific vehicle may vary. The weight of passengers, cargo and options or accessories may reduce the amount you can trailer. ²Safety or driver-assistance features are no substitute for the driver's responsibility to operate the vehicle in a safe manner. Read the vehicle Owner's Manual for important feature limitations and information. 

Due to current supply-chain shortages, certain features shown have limited or late availability, or are no longer available. See the window label or a dealer regarding the features on an individual vehicle.

TRACTION SELECT SYSTEM

- Switch Among up to Five Specific Modes (Depending on the Model) to Tailor Your Ride to Differing Road Conditions
- Traction Select System Is Standard on All Trims

ADAPTIVE RIDE CONTROL

- A Continuous Damping Control Suspension System Adjusts Shock Absorbers to the Road Surface Every 2 Milliseconds to Deliver a Smoother Ride
- Available on Denali AWD

TOWING CAPABILITY

- Max Towing of 3,500 lbs¹ With 2.0L Engine Is Available
- Max Towing of 4,000 lbs¹ With 3.6L Engine Is Available
- Hitch Guidance With Hitch View² Is Available



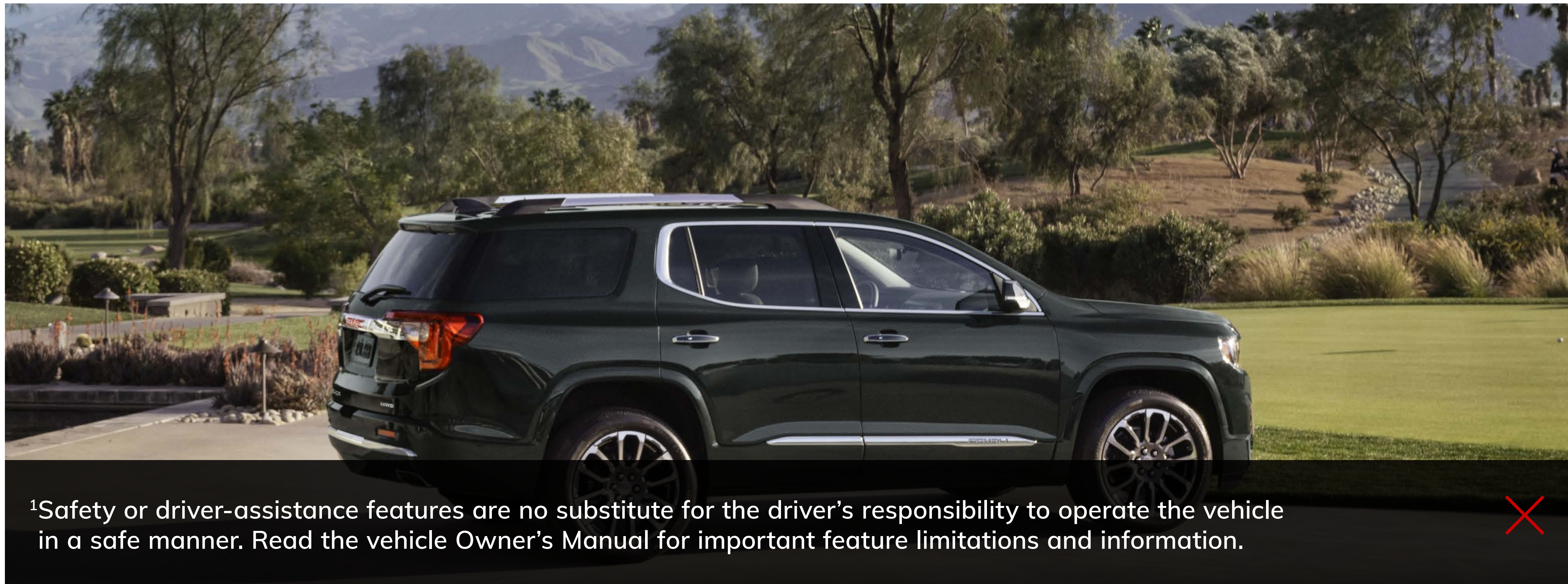
ACADIA OFFERS:


— Enhanced Automatic Emergency Braking¹ Is Available (Denali Only)

— Rear Camera Mirror¹ Is Available (Denali Only)

— 6" Diagonal Color Head-Up Display Is Available

— High Definition Surround Vision¹ Is Available



¹Safety or driver-assistance features are no substitute for the driver's responsibility to operate the vehicle in a safe manner. Read the vehicle Owner's Manual for important feature limitations and information. 

Due to current supply-chain shortages, certain features shown have limited or late availability, or are no longer available. See the window label or a dealer regarding the features on an individual vehicle.





KEEP YOUR CONNECTIONS STRONG

Three years of the OnStar® and Connected Services Premium Plan¹ are included on select Acadia models. With this plan, eligible vehicles² can enjoy the added peace of mind of the OnStar Safety & Security Plan³ and the complete suite of available connectivity features included in the Connected Vehicle Plan.⁴

ONSTAR AND CONNECTED SERVICES PREMIUM PLAN INCLUDES:

- In-Vehicle App⁵ Access
- In-Vehicle Wi-Fi® Hotspot Data⁶
- OnStar Guardian™ app⁷
- myGMC Mobile App⁸
- Automatic Crash Response⁹
- Emergency Services
- Crisis Assist
- Roadside Assistance¹⁰
- Stolen Vehicle Assistance¹¹
- Alexa Built-in¹²

¹Connected vehicle services vary by vehicle model and require active service plan, working electrical system, cell reception and GPS signal. OnStar links to emergency services. See onstar.com for details and limitations. ²Required on certain vehicles built after June 2022, and standard on certain vehicles built after August 31, 2022. ³OnStar plan, working electrical system, cell reception and GPS signal required. OnStar links to emergency services. See onstar.com for details and limitations. ⁴Connected Vehicle Plan does not include emergency or security services. Service varies with conditions and location. Data plans provided by AT&T®. See onstar.com for details and limitations. ⁵Available on select GM vehicles with compatible hardware. Third-party trademarks are the property of their respective third-party owners and used under agreement. Requires active service plan and paid AT&T vehicle data plan. ⁶Service varies with conditions and location. Requires active service plan and paid AT&T data plan. See onstar.com for details and limitations. ⁷U.S. and Canada only. Available on select Apple® and Android devices. Mobile Crash Response services are intended for use in vehicles only and can connect automatically on Android devices only. Service coverage varies with conditions and location. Service availability, features and functionality vary by device and software version. Device permissions are required for app to operate properly. OnStar links to emergency services. Device and app may not transmit all crash data. See onstar.com for details and limitations. ⁸Available on select Apple® and Android™ devices. Service availability, features and functionality vary by vehicle, device and the plan you are enrolled in. Terms apply. Device data connection required. See onstar.com for details and limitations. ⁹Automatic Crash Response may not transmit all crash data. ¹⁰Roadside services provided by Allstate Roadside Services for vehicles only. Limitations and restrictions apply. ¹¹Stolen Vehicle Assistance requires armed GM factory-installed theft-deterrent system, contact method on file and enrollment to receive alerts. Additional messaging and data rates may apply. Services are intended to assist with vehicle recovery and do not prevent theft or protect against damage or loss. ¹²Functionality is subject to limitations and varies by vehicle, infotainment system and location. Select service plan required. Certain Alexa Skills require account linking to use. Amazon, Alexa and all related marks are trademarks of Amazon.com, Inc., or its affiliates. See onstar.com for additional details.



HELP WHEN YOU NEED IT

With 3 years¹ of OnStar Safety and Security, you'll have added peace of mind knowing an Emergency-Certified Advisor² is ready to help. Whether it's a crash, a vehicle theft or an emergency situation, help is available 24/7.

The Safety & Security Plan³ includes the OnStar Guardian app,⁴ which lets you access the key OnStar safety services you depend on right from your phone. Help in a crash, assistance with a flat tire and more are available through your smartphone. Best of all, you can share OnStar Guardian with up to seven of your loved ones at no additional cost.



¹Required on certain vehicles built after June 2022, and standard on certain vehicles built after August 31, 2022. ²OnStar Emergency Advisors are certified by the International Academies of Emergency Dispatch. ³OnStar plan, working electrical system, cell reception and GPS signal required. OnStar links to emergency services. Not all vehicles may transmit all crash data. See onstar.com for details and limitations. ⁴U.S. and Canada only. Available on select Apple® and Android devices. Mobile Crash Response services are intended for use in vehicles only and can connect automatically on Android devices only. Service coverage varies with conditions and location. Service availability, features and functionality vary by device and software version. Device permissions are required for app to operate properly. OnStar links to emergency services. Device and app may not transmit all crash data. See onstar.com for details and limitations.



KEEP CONNECTED

- Wireless Apple CarPlay® Compatibility¹
- Wireless Android Auto™ Compatibility²
- Wireless Charging³ Is Available
- GMC Infotainment System⁴ With Navigation⁵ Is Available
- Bose Premium Eight-Speaker Audio System With Subwoofer Is Available



¹Vehicle user interface is a product of Apple® and its terms and privacy statements apply. Requires compatible iPhone® and data plan rates apply. Apple CarPlay, Siri, iPhone and Apple Music are trademarks of Apple, Inc., registered in the U.S. and other countries. ²Vehicle user interface is a product of Google and its terms and privacy statements apply. To use Android Auto on your car display, you'll need an Android phone running Android 6 or higher, an active data plan and the Android Auto app. Google, Android and Android Auto are trademarks of Google LLC. ³The system wirelessly charges one compatible mobile device. Some phones have built-in wireless charging technology and others require a special adapter/back cover. To check for phone or other device compatibility, see my.gmc.com/learn or consult your carrier. ⁴Functionality varies by model. Full functionality requires compatible Bluetooth® and smartphone, and USB connectivity for some devices. ⁵Map coverage available in the United States, Puerto Rico and Canada.





EXPLORE MORE, ALEXA'S ON BOARD

Alexa functionality is integrated into your GMC Infotainment System.¹ With available Amazon Alexa Built-in,² you can ask Alexa to stream your favorite music services such as Spotify^{®3} or Amazon Music, get directions, make calls, change your radio station and get routes to the nearest dealership—on the go. Alexa can also make shopping lists, play and resume audiobooks and get the score to last night's game.

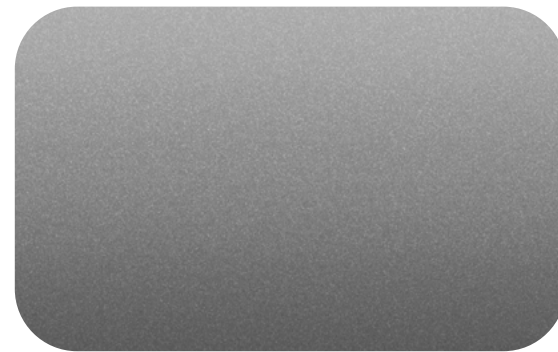
¹Functionality varies by model. Full functionality requires compatible Bluetooth[®] and smartphone, and USB connectivity for some devices. ²Functionality is subject to limitations and varies by vehicle, infotainment system and location. Select service plan required. Certain Alexa Skills require account linking to use. Amazon, Alexa, Amazon Music and all related marks are trademarks of Amazon.com, Inc., or its affiliates. See onstar.com for additional details. ³Spotify app requires active Spotify account. Visit spotify.com/auto on your smartphone, tablet or computer for terms and to set up an account. Available on select model year 2018 and newer infotainment systems with compatible hardware. Select service plan required.



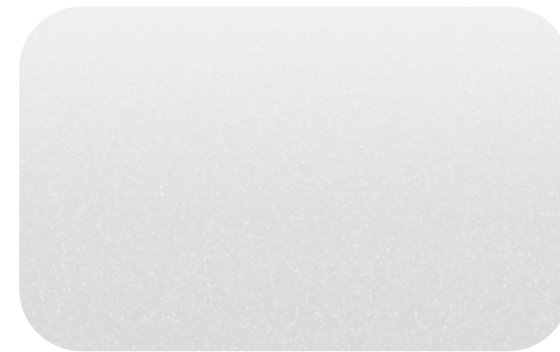
FIND YOUR TRUE COLORS



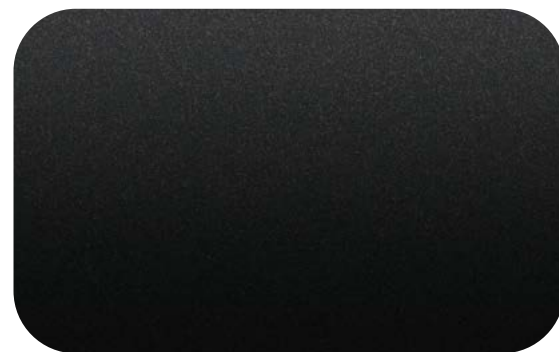
WHITE FROST
TRICOAT^{1,2}



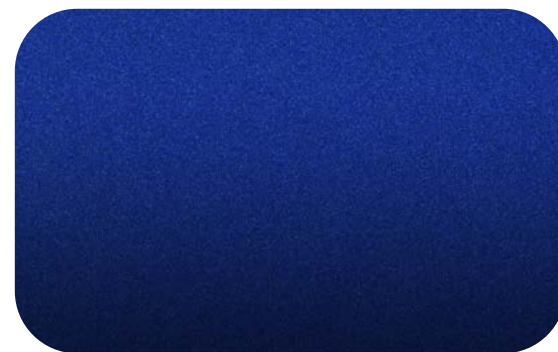
STERLING
METALLIC^{1,2}



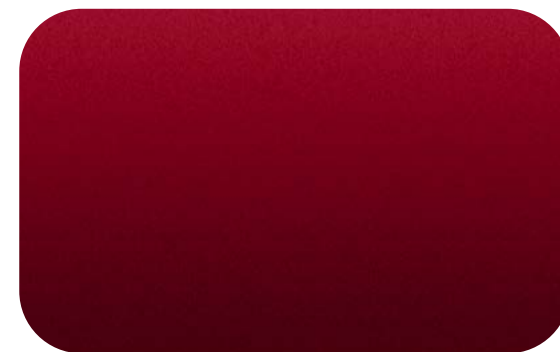
SUMMIT
WHITE



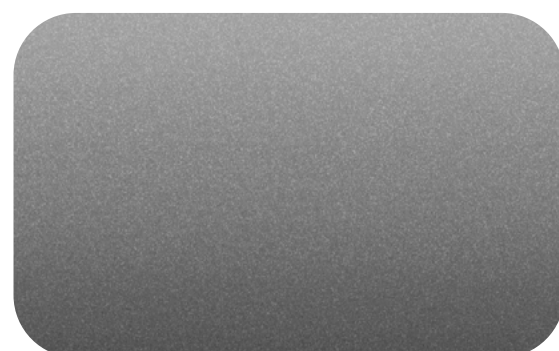
EBONY TWILIGHT
METALLIC¹



ULTRA BLUE
METALLIC¹



VOLCANIC RED
TINTCOAT¹




LIGHT STONE
METALLIC^{1,3}



HUNTER
METALLIC^{1,4}

¹Extra-cost color.
²Not available on SLE.
³Not available on Elevation Edition.
⁴Only available on Denali.




Denali shown in Hunter Metallic.

See your GMC dealer or gmc.com for more exterior color details.

Due to current supply-chain shortages, certain features shown have limited or late availability, or are no longer available. See the window label or a dealer regarding the features on an individual vehicle.