



CIAO FIAT is the new single freephone number for customers and prospective customers – 0800 3428 0000. CIAO FIAT provides you with access to all our products and services in the UK and can be used even when you are abroad (the number can be called from most countries in Europe). The call is free from land lines in the UK and all Europe (except Switzerland). Mobile network charges may vary depending on whom your contract is with.

Fiat Multipla



Performance figures supplied by Fiat SpA. Fuel consumption figures are in accordance with the Passenger Car Fuel Consumption and CO₂ Emissions Information Regulations 2001. Products offered for sale may differ from those described or illustrated in this brochure due to later production changes in specifications, components or place of manufacture. The contents of this brochure are therefore to be treated as representations as to the current availability of products as described, or as to products actually offered for sale. Fiat Auto (UK) Ltd. reserves the right to make changes at any time, without notice, to prices, colours, materials, equipment, specifications and models and also to discontinue models. Variations in product specification do occur from time to time – please check the exact specification with the dealer at the time of order. Fiat Auto (UK) Ltd, Fiat House, 240 Bath Road, Slough SL1 4DX.

Ed. 07/06

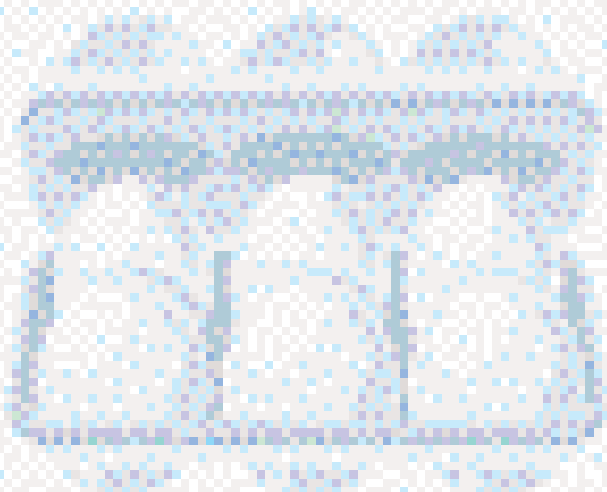
www.fiat.co.uk

FIAT

FIAT

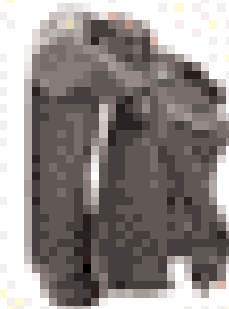
6 is better

Why settle for five seats when you can have 6 individual seats that everybody can get comfortable in? You and five friends.
Or you and your son's 5-a-side football team. Or you, four in-laws and their large dog. Imagine that, if you dare.



6 things to talk about when you've finished with the weather.

1) how versatile the interior of the Multipla is, 2) how you can convert the front middle seat into a small table, 3) or replace it with a refrigerator, 4) how easy it is to fold the back seats, 5) or remove them completely to create an enormous load bay, 6) for an adventurous trip away that will really give you something to talk about.

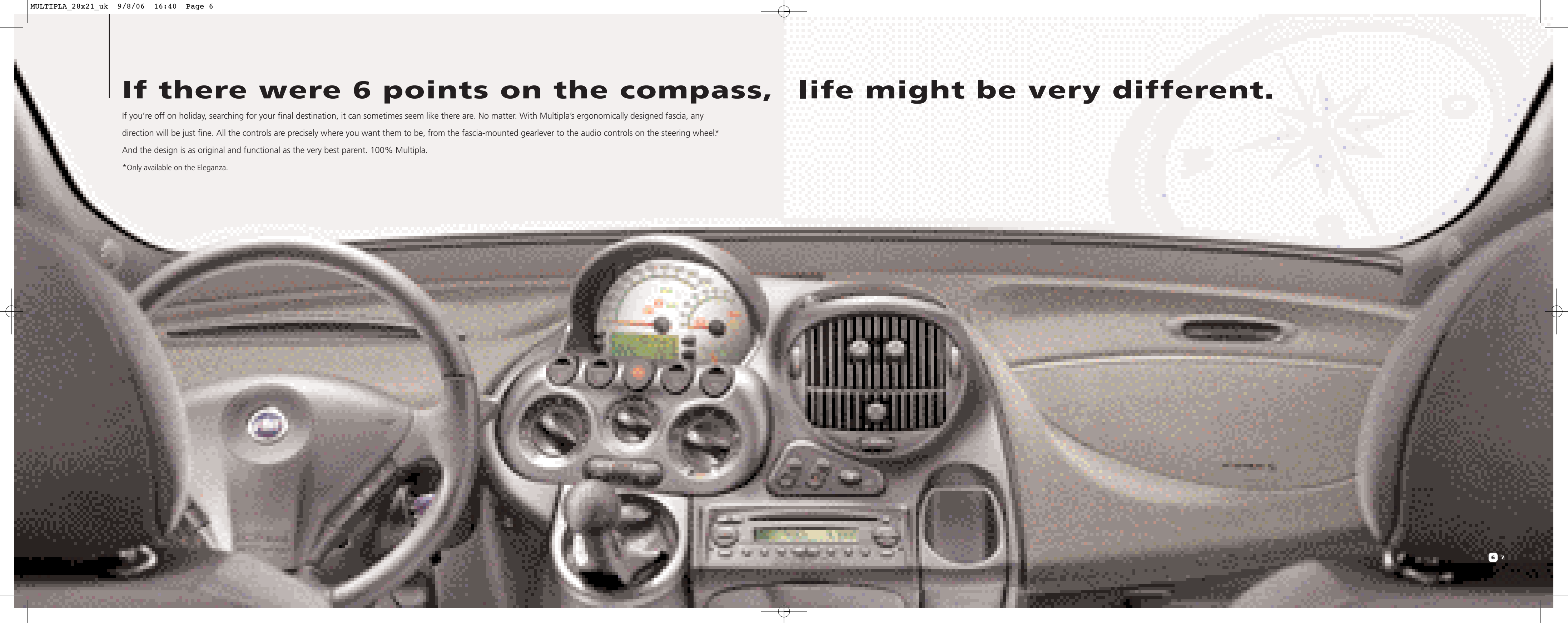


If there were 6 points on the compass, life might be very different.

If you're off on holiday, searching for your final destination, it can sometimes seem like there are. No matter. With Multipla's ergonomically designed fascia, any direction will be just fine. All the controls are precisely where you want them to be, from the fascia-mounted gearlever to the audio controls on the steering wheel.*

And the design is as original and functional as the very best parent. 100% Multipla.

*Only available on the Eleganza.



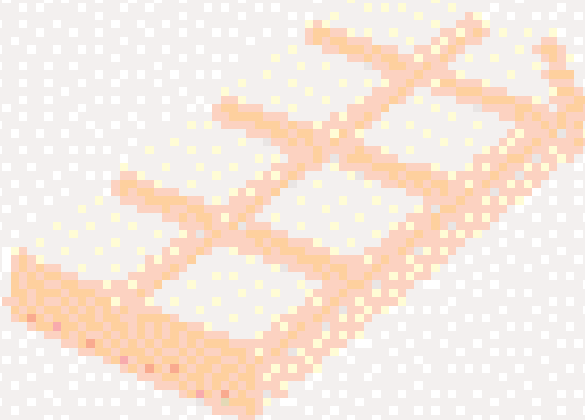
If the four elements suddenly became 6, chocolate really should be one of them.

You can survive for days without water, but chocolate is another matter. Never, ever set out on a journey without some chocolate.

Especially as we've taken the precaution of providing enough storage compartments to keep you in enough chocolate to last the journey.

There's even an option of a refrigerator to protect against melting in summer. Oh, and enjoy the view while you're enjoying the chocolate.

The Multipla has perfect 360° visibility.



There are five senses, but the most intriguing is the 6th.

You can indulge your senses to the full with Multipla, from enjoying its unique character to discovering its spaciousness, ease of handling, comfort and style.

But the best sense is the one that instinctively tells you you've found your perfect partner.



Main Standard Equipment MULTIPLA **DYNAMIC FAMILY**

- 3+3 seating
- Body coloured bumpers
- Power steering
- Height-adjustable steering wheel
- Remote central locking
- Electrically opened tailgate
- Fiat CODE immobiliser
- Storage compartments under sunvisors
- 12V power socket in luggage compartment
- Athermic windows
- Electric front windows
- Front and rear seats with adjustable back
- Folding and removable rear seats
- Electrically adjustable, heated and folding door mirrors
- Electric height-adjustable driver's seat
- Driver's airbag
- Double front passenger airbag with key-operated deactivator
- Isofix attachments on rear seats
- Fire Prevention System (FPS)
- Halogen headlights
- Central seats (front and rear) with three-point seatbelts
- Front seat belts with pretensioner and load limiter
- ABS + EBD
- Radio CD player with 6 speakers
- Third brake light

MULTIPLA **DYNAMIC PLUS** (Same as Dynamic Family, plus)

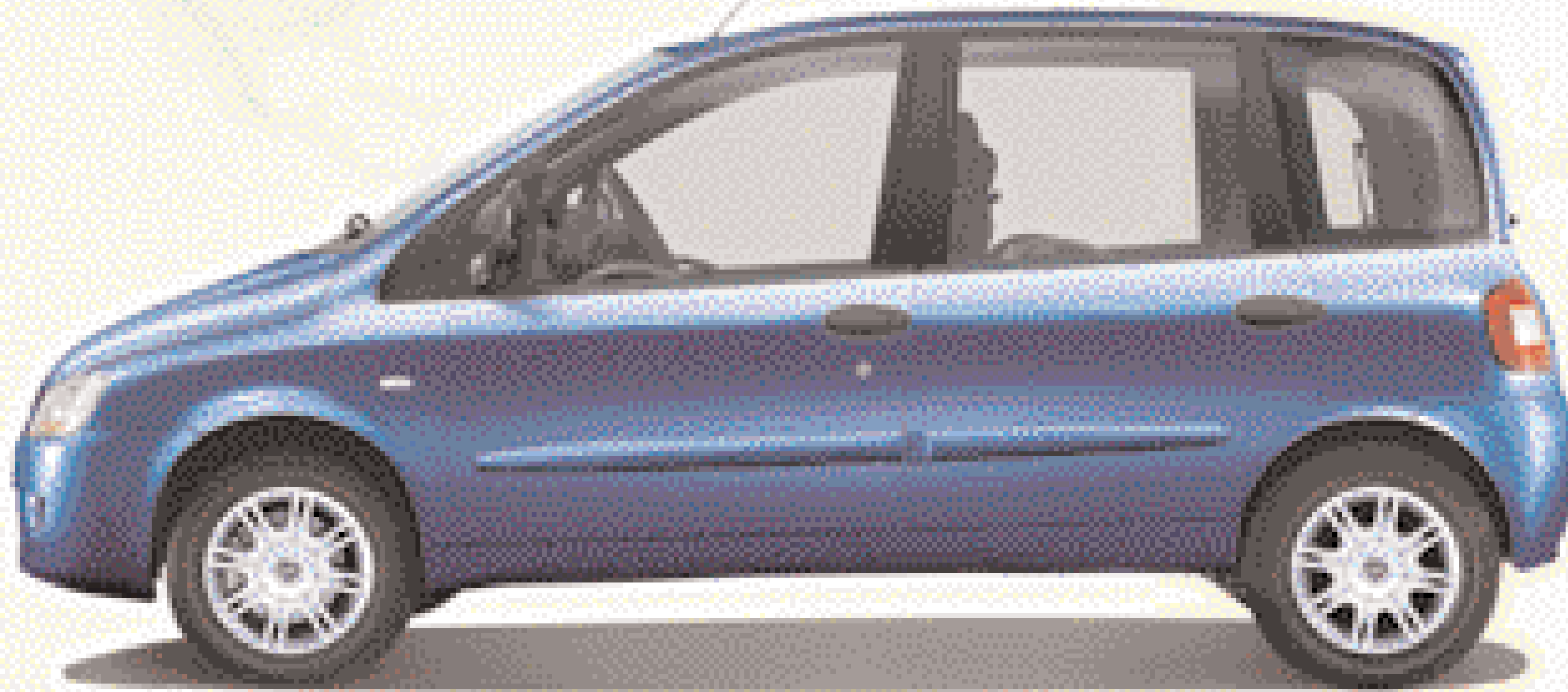
- Foglights
- Automatic climate control
- Alarm
- Front side airbags

MULTIPLA **ELEGANZA** (Same as Dynamic Plus, plus)

- Reverse parking sensors
- 15" Alloy wheels
- Electric rear windows
- Window airbags
- Body-coloured side rubbing strips
- Leather-trimmed steering wheel and gear lever
- Radio steering wheel controls
- Driver's seat with lumbar adjustment

If you love travel, you'd probably prefer 6 continents.

We can't help you with that for the moment, but we can certainly help you get around the five we've got. Thanks to its innovative engines, the 1.9 MultiJet or 1.6 16v petrol, Multipla will go miles and miles with maximum fuel economy and minimal emissions. And with its full set of airbags, protective cockpit structure, anti-intrusion bars, controlled deformability bodyshell, ABS + EBD, you'll get there safely.



1.9 *MultiJet* DYNAMIC FAMILY – DYNAMIC PLUS – ELEGANZA

Capacity 1910 cm³

Emission level Euro 4 with diesel particulate filter (DPF)

120 bhp at 4000 rev/min

206 Nm at 1450 rev/min

Common Rail MultiJet electronic direct injection with turbocharger and intercooler

Fuel consumption mpg / (l/100 km)

urban 34.4/8.2

extra urban cycle 50.4/5.6

combined 43.5/6.5

CO₂ exhaust emissions (g/km) 173

1.6 16v DYNAMIC FAMILY

Capacity 1596 cm³

Emission level Euro 4

103 bhp at 5750 rev/min

145 Nm at 4000 rev/min

Electronic MPI with phased sequential injection, returnless system

Fuel consumption mpg / (l/100 km)

urban 25.4/11.1

extra urban cycle 39.2/7.2

combined 32.8/8.6

CO₂ exhaust emissions (g/km) 204



If genies gave 6 wishes, one of them would have to be a Multipla.

Have you ever noticed how genies only give you three wishes? With a Multipla, we think 6 is better. 6 seats, for a start.

Then 6 more extras than you could ever wish for, including luxuries like roof bars, Bluetooth™, a refrigerator and even a built-in bike carrier.

And at least 6 times as practical as a flying carpet.

If three is perfect, 6 is twice as perfect.

Interior and exterior: two colour choices for each. Multipla-d by three different versions gives you 6 unique ways to personalise your Multipla.

Do you notice a pattern emerging? Something to do with 6, perhaps?

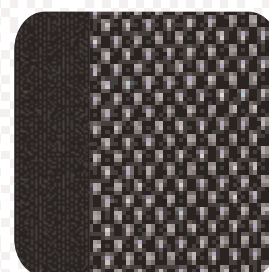
Interior Upholstery



144
Doria Blue Cloth



157
Doria Grey Cloth



188
Inox Blue/Black Cloth



187
Inox Beige/Black Cloth

| | DYNAMIC FAMILY / DYNAMIC PLUS | | ELEGANZA | |
|----------------------|-------------------------------|-------------------------|------------------------------|-------------------------------|
| INTERIOR UPHOLSTERY | Doria Blue Cloth 144 | Doria Grey Cloth 157 | Inox Blue/Black Cloth 188 | Inox Beige/Black Cloth 187 |
| FASCIA TRIM | Black PVC | Black PVC | Jersey Inox Blue/Black | Jersey Inox Beige/Black |
| PANEL TRIM | Doria Blue Cloth | Doria Grey Cloth | Inox Blue/Black Cloth | Inox Beige/Black Cloth |
| Solid | | | | |
| 475 Rock'n'Roll Blue | ■ | | ■ | ■ |
| Metallic | | | | |
| 163 Bolero Red | | ■ | | ■ |
| 598 Merengue Orange | | ■ | | ■ |
| 599 New Orleans Blue | | ■ | ■ | ■ |
| 612 Minimal Grey | ■ | ■ | ■ | ■ |
| 690 Digital Grey | ■ | | | ■ |
| 792 Surf Azure | ■ | | ■ | |
| 891 Crossover Black | | ■ | ■ | ■ |



163 Bolero Red
475 Rock'n'Roll Blue



598 Merengue Orange
599 New Orleans Blue



612 Minimal Grey
690 Digital Grey

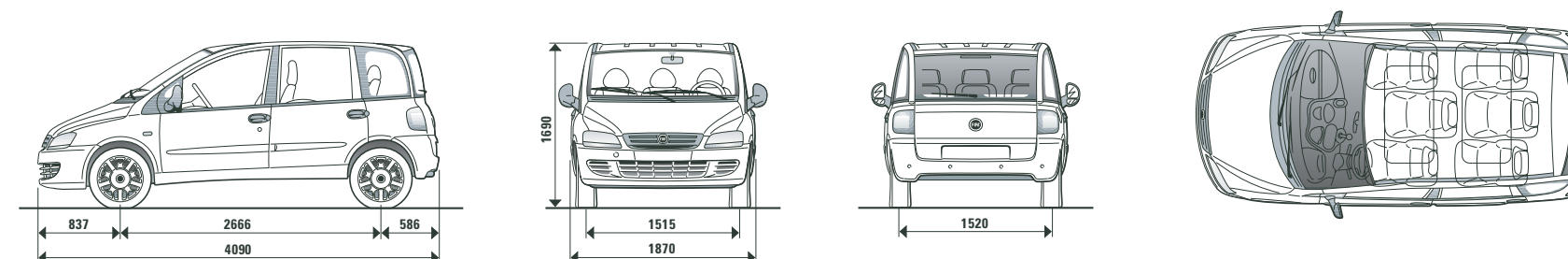


792 Surf Azure
891 Crossover Black

Technical Specifications.

| | 1.6 16v | 1.9 MULTIJET |
|-------------------------------------|---|---|
| ENGINE | | |
| No. cylinders, arrangement | 4, in line, front, transverse | 4, in line, front, transverse |
| Bore x stroke (mm) | 80,5 x 78,4 | 82 x 90.4 mm |
| Capacity (cc) | 1596 | 1910 |
| Emission level | Euro 4 | Euro 4 with diesel particulate filter DPF |
| Compression ratio | 10,5:1 | 18.0:1 |
| Max power: bhp (kW-EC) @ rpm | 103 (76) @ 5750 | 120 (88) @ 4000 |
| Max EC power: Nm (kgm) | 14.8 (145) @ 4000 | 21.4 (210) @ 3000 |
| Timing (drive) | DOHC (toothed belt) hydraulic tappets 16v | SOHC (toothed belt) |
| Fuel | Petrol | Diesel |
| Fuel system | Electronic MPI with phased sequential injection, returnless system | Common Rail Multijet electronic direct injection with turbocharger and intercooler |
| Ignition | static electronic integral with injection | by compression |
| TRANSMISSION | | |
| Drive | Front | Front |
| Clutch | Single dry plate with cup engagement spring, hydraulic control | Single dry plate with cup engagement spring, hydraulic control |
| Gearbox: no. gears | 5 + reverse | 5 + reverse |
| STEERING | | |
| Type | Rack and pinion with power assistance | Rack and pinion with power assistance |
| Turning circle (m) | 11 | 11 |
| BRAKES – D (disc) - T (drum) | | |
| Type | Hydraulic system with 2 independent crossover circuits; front disc brakes; rear drum brakes | Hydraulic system with 2 independent crossover circuits; front disc brakes; rear drum brakes |
| Front: dia. mm | D 284 ventilated | D 284 ventilated |
| Rear: dia. mm | T 228 | T 228 |
| SUSPENSION | | |
| Front | Independent MacPherson type with tie rods anchored to a subframe, telescopic hydraulic shock absorbers, coil springs and stabiliser bar | Independent MacPherson type with tie rods anchored to a subframe, telescopic hydraulic shock absorbers, coil springs and stabiliser bar |
| Rear | Rigid axle with longitudinal leaf springs | Rigid axle with longitudinal leaf springs |
| WHEELS | | |
| Tyres | 185/65 R 15 | 185/65 R 15 |
| ELECTRICAL EQUIPMENT (12V) | | |
| Capacity (Ah) | 50 | 60 |
| CAPACITIES | | |
| Fuel tank capacity (litres) | 63 | 63 |

| | 1.6 16v | 1.9 MULTIJET |
|---|-----------|--------------|
| PERFORMANCE – FUEL CONSUMPTION | | |
| Top speed (mph) | 106 | 111 |
| Fuel consumption (EC Directive 99/100) | | |
| Urban cycle (mpg - l/100 km) | 25.4/11.1 | 34.4/8.2 |
| Extra-urban cycle (mpg - l/100 km) | 39.2/7.2 | 50.4/5.6 |
| Combined (mpg - l/100 km) | 32.8/8.6 | 43.5/6.5 |
| CO ₂ exhaust emissions (g/km) | 204 | 173 |
| DIMENSIONS | | |
| Wheelbase (mm) | 2666 | 2666 |
| Length (mm) | 4090 | 4090 |
| Width (mm) | 1870 | 1870 |
| Max unladen height (mm) | 1690 | 1690 |
| Front track (mm) | 1515 | 1515 |
| Rear track (mm) | 1520 | 1520 |
| Front overhang | 837 | 837 |
| Rear overhang | 586 | 586 |
| Luggage compartment capacity min/max (dm ³) | 430/1900 | 430/1900 |
| WEIGHTS | | |
| Vehicle kerb weight | 1300 | 1370 |
| Towable loads (kg) | | |
| Braked trailer | 1200 | 1300 |
| Unbraked trailer | 560 | 560 |



Standard and optional equipment.

| | DYNAMIC FAMILY | DYNAMIC PLUS | ELEGANZA |
|--|----------------|--------------|----------|
| STYLE FEATURES | | | |
| Body coloured bumpers | ■ | ■ | ■ |
| Black side rubbing strips | ■ | ■ | - |
| Body-coloured side rubbing strips | - | - | ■ |
| Metallic paint | 210 ○ | ○ | ○ |
| Leather-trimmed steering wheel and gear lever | - | - | ■ |
| 15" Alloy wheels with 195/60 R 15 tyres | 431 ○ | ○ | ■ |
| 17" Alloy wheels with 205/45 R 17 tyres (not suitable for snow chains) | 435 - | - | ○ |
| Sports sideskirts | △ | △ | △ |
| Spoiler on tailgate | △ | △ | △ |
| 17" light alloy wheels (not suitable for snow chains) of new design | △ | △ | △ |
| Moquette carpeting | △ | △ | △ |
| COMFORT / FUNCTIONALITY | | | |
| Power steering | ■ | ■ | ■ |
| Height-adjustable steering wheel | ■ | ■ | ■ |
| Remote central locking | ■ | ■ | ■ |
| Electrically opened tailgate | ■ | ■ | ■ |
| Fiat CODE immobiliser | ■ | ■ | ■ |
| Storage compartments under sunvisors | ■ | ■ | ■ |
| 12V power socket in luggage compartment | ■ | ■ | ■ |
| Athermic windows | ■ | ■ | ■ |
| Electric front windows | ■ | ■ | ■ |
| Front and rear seats with adjustable backrest | ■ | ■ | ■ |
| Folding and removable rear seats | ■ | ■ | ■ |
| Electric height-adjustable driver's seat | ■ | ■ | ■ |
| Driver's seat with lumbar adjustment | - | - | ■ |
| Sliding central rear seat♦ | - | - | ■ |
| Seat back pockets | - | - | ■ |
| Manual climate control system | ■ | - | - |
| Automatic climate control system | - | ■ | ■ |
| Electrically adjustable, heated and folding door mirrors | ■ | ■ | ■ |
| Rear electric windows | 023 ○ | ○ | ■ |
| Dark tinted windows | 070 - | - | ○ |

♦ not available with refrigerator

| | DYNAMIC FAMILY | DYNAMIC PLUS | ELEGANZA |
|---|----------------|--------------|----------|
| Refrigerator | 465 - | - | ○ |
| Reverse parking sensors | 508 ○ | ○ | ■ |
| Electrically operated double opening sunroof | 576 ○ | ○ | ○ |
| Standard-sized spare wheel (only for 15") | 980 ○ | ○ | - |
| Alloy spare wheel (only for 15") | 982 ○ | ○ | ○ |
| Aluminium roof bars | △ | △ | △ |
| Internal bike carrier | △ | △ | △ |
| Ski carrier | △ | △ | △ |
| Dog guard | △ | △ | △ |
| Protection for luggage compartment | △ | △ | △ |
| Oddments nets | △ | △ | △ |
| Pull-out towing hook | △ | △ | △ |
| SAFETY | | | |
| Driver's airbag | ■ | ■ | ■ |
| Double front passenger airbag with key-operated deactivator | ■ | ■ | ■ |
| Front side airbags | ○ | ■ | ■ |
| Isofix attachments on rear seats | ■ | ■ | ■ |
| Fire Prevention System (FPS) | ■ | ■ | ■ |
| Halogen headlights | ■ | ■ | ■ |
| Central seats (front and rear) with three-point seatbelts | ■ | ■ | ■ |
| Front seat belts with pretensioner and load limiter | ■ | ■ | ■ |
| ABS + EBD | ■ | ■ | ■ |
| Foglights | 097 ○ | ■ | ■ |
| Alarm | 213 ○ | ■ | ■ |
| Window airbags front and rear | 614 ○ | ○ | ■ |
| Cradle (up to 10 kg) | △ | △ | △ |
| Kiddy Life seat (9 to 36 kg) | △ | △ | △ |
| AUDIO / TELEMATICS | | | |
| RDS car radio with CD player | 564 ■ | ■ | ■ |
| CD-changer | 563 - | - | ○ |
| Steering wheel mounted radio controls | 245 - | - | ■ |
| Bluetooth™ hands-free system | 411 ○ | ○ | ○ |

■ = standard ○ = optional - = not available △ = Accessories

Fiat customer benefits.

When you buy a new Fiat, you buy more than just a car. Behind every car we sell there is the reassurance of a whole range of customer benefits and services designed to make the ownership of your Fiat as enjoyable, affordable and trouble free as possible.

2 YEAR, UNLIMITED MILEAGE, MANUFACTURER WARRANTY

Any repairs required as the result of faulty materials or manufacturer are carried out free of charge – both for parts and labour.

3RD YEAR DEALER WARRANTY*

This warranty covers most electrical and mechanical components in the third year, or up to 60,000 miles from the date of first registration, whichever occurs first. The warranty is provided free of charge and is subject to conditions (full details are available from your Fiat dealer).

3 YEAR PAINTWORK WARRANTY

Any paintwork defects due to faulty materials or manufacturer will be rectified free of charge during the first 3 years.

8 YEAR ANTI PERFORATION WARRANTY

Any perforation of the bodywork due to corrosion will be repaired free of all parts and labour charges during the first 8 years.

*Only applicable to UK vehicles sourced through Fiat Auto (UK) Ltd

12 MONTHS PART AND REPAIR GUARANTEE

All genuine Fiat parts are guaranteed for 12 months, or the duration of the prevailing warranty on the vehicle, as are repairs carried out by any Fiat dealer using genuine parts.

FIXED SERVICE COSTS

All Fiat dealers operate a "Menu Pricing" programme, which guarantees fixed service and replacement costs, with no hidden extras. The price you see is the price you'll pay, unless you have given your consent for further work to be carried out.

FIAT INFORMATION AND CUSTOMER SERVICE

CIAO FIAT is the new single freephone number for customers and prospective customers - 00800 3428 0000. CIAO FIAT provides you with access to all our products and services in the UK and can be used even when you are abroad (the number can be called from most countries in Europe).

The call is free from land lines in the UK and all Europe (except Switzerland). Mobile network charges may vary depending on whom your contract is with.

Fiat also believe it is important to stay in contact with you and will, subject to your agreement, telephone you from time to time to ensure that you are happy with your Fiat and the service you receive from your dealer. You can also access information about Fiat products and services online on our comprehensive website at www.fiat.co.uk.

Insured products and services.

The following insured products and services are provided through Fiat Auto Financial Services (Wholesale) Limited (for AA Assurance and Fiat Motor Insurance) and Fiat Auto Financial Services Limited (for Credit Protection Plans). Both companies are authorised and regulated by the Financial Services Authority for General Insurance.

1 YEAR'S AA ASSURANCE COVER

All new Fiats first registered on, or after, the 1st January 2005, come with 1 year's AA Assurance cover, which includes Roadside Assistance, Home Start, Relay, Relay Plus, European Cover and Accident Management.

This insured service is provided on a free of charge basis and is available 24 hours a day, throughout the year. AA Assurance also provides free access to travel information, legal advice and technical information.

FIAT MOTOR INSURANCE

Comprehensive car insurance is available at competitive premiums, with up to 65% No Claims Bonus transferable from your existing policy after five consecutive years of claim free driving. For a quotation, either ring 0870 241 3805, or visit online through www.fiat.co.uk

FINANCE PLANS

Fiat Consumer Services offers a comprehensive range of financial plans to suit private and business customers alike. Fiat I-deal, Fiat Finance Lease, Fiat Lease Purchase and traditional Hire Purchase can adapt to suit your individual requirements, whatever they may be. For example, you may wish to include the cost of one of our Credit Protection Plans, which provides added security for you, your family and your investment. Your Fiat dealer will be pleased to design a specific plan for you.

Please ask for more information. Written quotations available on request. A guarantee may be required. Fiat Consumer Services is a division of Fiat Auto Financial Services Limited.

FIAT AUTO CONTRACTS – CONTRACT HIRE FOR THE BUSINESS USER

More and more businesses are turning to Contract Hire as a simple, tax efficient way of financing their fleet. Contract Hire allows the use of a vehicle for a pre-determined fixed period and cost (subject to mileage and conditions) and has many features and benefits that your Fiat dealer will be delighted to discuss with you.

At Fiat Auto Contracts we also provide a full support service, including maintenance, relief vehicle, AA Assurance and accident management, saving you time to concentrate on running your business. For more information, please contact your Fiat dealer, or call 01753 486885.

Contract Hire finance facilities are available to VAT registered businesses, subject to credit approval. Written quotations are available from Fiat Auto Contracts, 240 Bath Road, Slough, Berkshire, SL1 4DX.

Fiat Auto Contracts Limited is an appointed representative of Fiat Auto Financial Services (Wholesale) Limited.