

CHRYSLER SPECIFICATIONS

# PT CRUISER

CABRIO





PT Cruiser Cabrio's commanding Satin Silver centre stack, topped with a signature wing badge analog clock, includes air comfort controls, as well as controls for the sound system with available MP3-compatible six-disc CD changer. Music is beautifully projected by the available Boston Acoustics® Audio System. The available navigation radio with CD player and MP3 capability guides the way with its colour screen featuring turn-by-turn GPS with voice instruction and the memory to store up to 100 personal addresses.



PT Cruiser Cabrio's spacious interior comfortably accommodates two adults in the rear seat. The split-folding rear seats can simultaneously transport long objects and a backseat passenger. A colour-keyed gearshift knob directs a 5-speed manual or efficient available AutoStick® automatic transaxle. The standard colour-keyed sport bar features two overhead courtesy lamps while the console lighting casts a cool glow over the front cup holders, proving that not even the dark of night can dim PT Cruiser Cabrio's energetic spark.



A  
16-inch  
Chrome-Clad Wheel



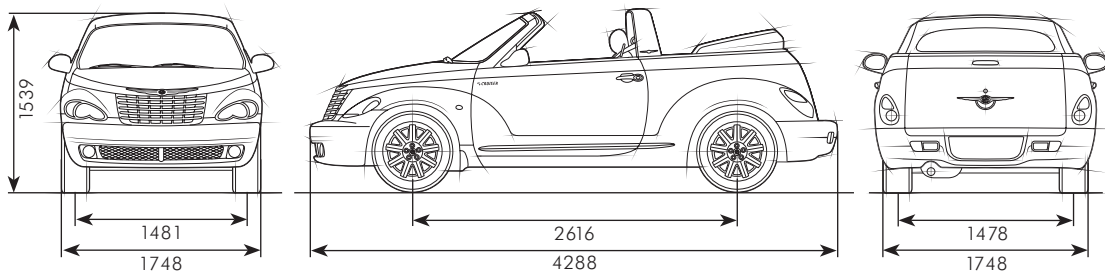
B  
16-inch Silver-Painted  
Cast-Aluminium Wheel

	A	B
PT Cruiser Cabrio Limited	S	
PT Cruiser Cabrio Touring		S

S = Standard.



Not only is PT Cruiser Cabrio a fun and energetic convertible, but a powerful one as well. From high-speed highways to casual country roads, PT Cruiser Cabrio's 2.4L DOHC 16-valve four-cylinder engine provides optimum performance.





## EXTERIOR COLOURS

	Black	Marine Blue	Inferno Red	Bright Silver	Cool Vanilla	Tangerine Pearl	Pastel Yellow	Opal Metallic
Limited	1,2	1	1,2	1	1,2	2	1,2	1
Touring	3	3	3	3	3	NA	3	3

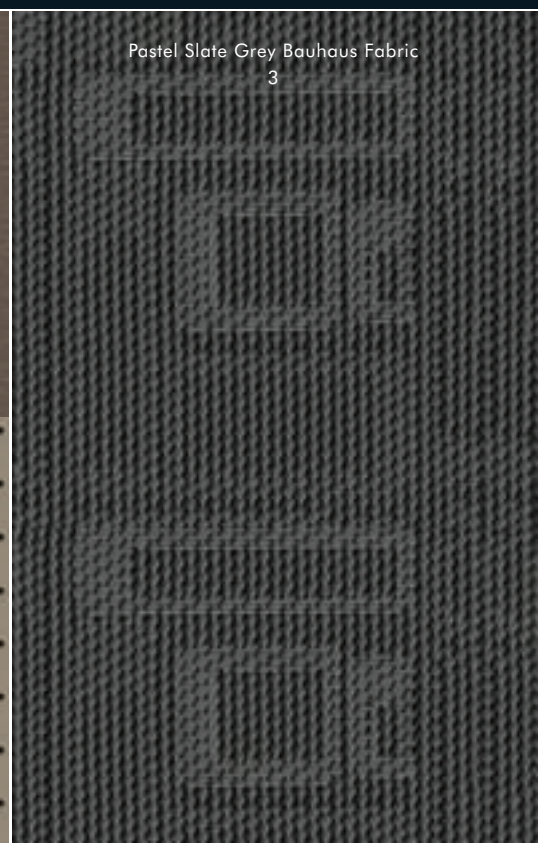
## UPHOLSTERY



Pastel Slate Grey Royale Leather Trimmed Seats  
with Two-Tone Axis Perforated Inserts  
1



Pastel Pebble Beige Royale Leather Trimmed Seats  
with Two-Tone Axis Perforated Inserts  
2



Pastel Slate Grey Bauhaus Fabric  
3



Genuine Chrysler Accessories further personalise PT Cruiser Cabrio's style from the sky straight down to the ground. The Convertible Package provides a Rear Spoiler, Windscreen, and Moulded Splash Guards. The 16-inch 5-spoke Chrome Wheels provide a constant presence, and are machined to match your vehicle's hubs for a smooth and balanced ride.



Genuine Chrysler Accessories enhance PT Cruiser Cabrio's sound system. The RAR radio features an AM/FM stereo with six-disc CD player, and MP3. Add premium GPS technology to your vehicle with the Navus™ dash-mounted navigation system. Featuring turn-by-turn directional prompts, voice instructions, trip information, automatic re-routing, point-of-interest data and much more. The iPod® Interface Module is a simple plug-and-play dock for your iPod, allowing you to play your music files through your vehicle's audio system. Ingenuity abounds with UConnect®, a hands-free technology for Bluetooth® compatible phones\*.

\*Includes auto day/night inside rearview mirror. You can retain your current mobile carrier and mobile phone number (and one bill) as long as your mobile phone employs Bluetooth Hands-Free Profile version 1.0 or higher.

	PT Cruiser Cabrio	
	Touring	Limited
<b>ENGINE/TRANSMISSION</b>		
2.4L DOHC 16V 4-cylinder/5-speed manual	S	S
2.4L DOHC 16V 4-cylinder/4-speed automatic AutoStick®	0	0
<b>MECHANICAL</b>		
Brakes — 4-wheel disc antilock with traction control	S	S
Fuel Tank — 57-litre	S	S
Cruise control — Electronic with column-mounted controls	S	S
Suspension — Front, independent with MacPherson struts and stabiliser bar; rear twist-beam axle with trailing arms and coil springs, shock absorbers and Watt's linkage	S	S
— European	S	S
Traction Control — Low-speed, packaged with 4-wheel disc antilock brakes	P	P
<b>EXTERIOR FEATURES</b>		
Cabrio Top Boot Cover	S	S
Door Handles — Chrome, push button-actuated	S	S
Exhaust Tip — Chrome-plated stainless steel		S
Exterior Accents — Chrome grille accents	S	S
Glass — Solar-Control, all windows	S	S
— Smart Glass, power roll-down window (automatic with top operation)	S	S
— Rear window with defroster integral to Cabrio top	S	S
Headlamps — Quad-halogen headlamps	S	S
— Fog lamps, front	S	S
Mirrors — Dual power, heated exterior	S	S
Spare Tyre — Compact	S	S
Sport Bar — With 2 spotlights (theatre-dimming) and Chrysler wing badge	S	S
Tyres — 205/55R16 Performance	S	S
Boot-Lid Handle — Integrated into rear Chrysler wing badge	S	S
Wheels — 16" cast-aluminium, Silver-painted, 9-spoke	S	
— 16" chrome-clad		S
Windshield Wipers — 2-speed with variable intermittent mode	S	S
<b>INTERIOR FEATURES</b>		
Air Conditioning — Manual temperature control	S	S
Console — Floor; includes cup holders, coin holder, CD storage, sliding armrest with 2-tier multipurpose bin and auxiliary power outlet	S	S
Defroster — Electric rear window	S	S
Door Locks — Power, includes auto speed-sensitive with central locking	S	S
Electronic Vehicle Information Centre (EVIC) — Includes compass, temperature, audio information, average fuel economy, distance to empty, elapsed time and personal settings	S	S
Floor Mats — Front and rear, carpeted	0	0
Glove Box — Locking	S	S
Indicators — Brake system, low oil pressure, charging system, check engine, seat belt telltale, high beams, chimes for low fuel, door ajar, boot lid ajar	S	S
<b>INTERIOR ACCENTS</b>		
Instrument Panel Trim — Colour-keyed inserts for Inferno Red, Marine Blue, Pastel Yellow, Opal Metallic and Tangerine Pearl	P	P
— Bright Silver colour inserts for Bright Silver, Cool Vanilla and Black	P	P
Lighting — Sport bar dome with theatre-dimming	S	S
— Console flood lamp	S	S
— Rear cargo area	S	S
Mirrors — Prismatic rearview with map/reading lamps	S	S
— Covered illuminated visor vanity	S	S
Power Accessory Outlets — 12V, located in centre floor console multipurpose bin and instrument panel	S	S
Shift Knob — Colour-keyed ball-type with chrome shift lever (Pastel Slate Grey or Pastel Pebble Beige)	S	S
Speedometer — 240-kph	S	S
Steering — Power rack-and-pinion	S	S
Steering Column — Tilt	S	S
Steering Wheel — Leather-wrapped	S	S
Sun Visors — Dual, cloth covered with illuminated mirror	S	S
Ventilation Ducts — Rear, located under and near the rear of standard centre console	S	S
Windows — Power with driver and front-passenger 1-touch down	S	S



## PT Cruiser Cabrio

Touring | Limited

## SEATING

Seating — Front	— Heated driver's and front-passenger		S
	— Driver's manual lumbar adjuster		S
	— 6-way power driver's	S	S
Rear	— 50/50 split fold-and-tumble with integrated head forms	S	S

## ENTERTAINMENT SYSTEMS

Entertainment Group	— Includes: AM/FM stereo with 6 disc CD player, MP3 play capability, and 6 Premium Boston Acoustics speakers with 368 watt amplifier	O	O
Radios	— AM/FM stereo with CD player, Radio Data System	S	S
	— AM/FM stereo with 6-disc CD player, MP3 play capability, Radio Data System (included in Entertainment Group)	P	P
	— AM/FM stereo radio with CD player, MP3 play capability and turn-by-turn GPS Navigation System	O	O
Sound Systems	— 6 speakers	S	S
	— Boston Acoustics® Audio System includes 368-watt amplifier and 6 premium speakers (included in Entertainment Group)	P	P

## SAFETY &amp; SECURITY

Air Bags <sup>(1)</sup>	— Next Generation multistage driver and front-passenger	S	S
	— Supplemental side for front outboard passengers	S	S
	— Driver-side inflatable knee blocker	S	S
Brake-Park Interlock	— Prevents automatic transaxle from being shifted out of Park unless brake pedal is applied	P	P
Child Seat Anchor System (LATCH)	— Lower child seat anchors and upper tethers anchors help ease the installation of aftermarket child seats	S	S
Clutch-Starter Interlock	— Cannot start engine until clutch pedal is applied (manual transaxle)	S	S
Dynamic Side-Impact Intrusion Protection	— Steel side-guard door beams, unique transverse beam and structural body reinforcements	S	S
Remote Keyless /Illuminated Entry System	— Controls for power door locks and boot-lid release; includes 2 transmitters with rolling-code technology	S	S
Seat Belts	— Front shoulder belts with travelling buckles and fixed turning loops; 3-point shoulder belts at both rear-seat positions	S	S
Security Alarm System		S	S
Sentry Key®	— Engine immobiliser	S	S

S = Included. O = Optional. P = Included in package noted in parentheses.

<sup>(1)</sup>Always use seat belts. Children 12 and under should always be in a backseat correctly using an infant or child restraint system, or the seat belt positioned correctly for the child's age and weight.

## PT Cruiser Cabrio

## INTERIOR DIMENSIONS\*

Head Room — Front/Rear	979/923
Leg Room — Front/Rear	1031/1038
Shoulder Room — Front/Rear	1344/1066
Hip Room — Front/Rear	1260/1043
Seating Capacity	4
Cargo Capacity (L) — 2nd row folded	474
Boot Capacity (L) maximum	249

## PT Cruiser Cabrio

## EXTERIOR DIMENSIONS\*

Wheelbase	2616
Overall Length	4288
Overall Width	1748
Overall Height	1539
Track — Front/Rear	1481/1478
Coefficient of Drag	0.377

## WEIGHT AND CAPACITIES

Base Kerb Weight (kg)	1605 (2.4L engine, manual transaxle)
Maximum Towing Capacity (kg)	450
Turning Diameter (m)	12.0
Fuel Tank (L)	57

## PT Cruiser Cabrio

## ENGINE

2.4L Naturally Aspirated	
— Drivetrain	FWD
— Engine Configuration	In-line 4-cylinder
— Displacement (cc)	2429
— Compression Ratio	9.5:1
— Bore and Stroke	87.5 x 101
— Valve System	DOHC
— Fuel Delivery System	SMPI
— Power (kW @ rpm)	105 @ 5200
— Torque (Nm @ rpm)	214 @ 4000
— Standard Transaxle	5-speed manual
— Optional Transaxle	4-speed AutoStick®

\*Dimensions in millimetres unless otherwise noted.

This brochure is a publication of DaimlerChrysler Corporation. All product illustrations and specifications are subject to change. DaimlerChrysler Corporation reserves the right to make alterations in the described models and services — at any time without prior notice or obligation — which are considered necessary to the purpose of product improvement or for reasons of design and/or marketing. Boston Acoustics is a registered trademark of Boston Acoustics, Inc. Sentry Key, UConnect and Mopar are registered trademarks of DaimlerChrysler Corporation. Bluetooth is a registered trademark of Bluetooth SIG, Inc. iPod is a registered trademark of Apple Computer, Inc.

