

FIAT ACCESSORIES*.

	ACTIVE	FAMILY	DYNAMIC
Aluminium or steel roof bars	△	△	△
Surfboard carrier	△	△	△
Bicycle rack	△	△	△
Roof top ski/snowboard rack	△	△	△
Vertical rear-mounted ski/snowboard carrier	△	△	△
Luggage retaining net	△	△	△
Rear backrest bags	△	△	△
Mudguards	△	△	△
Alloy wheel kit	△	△	△
Leather steering wheel	△	△	△
Flexible load liner	△	△	△
Carpet mats	△	△	△
Separation grille/dog guard	△	△	△
Child seat (15-36kg)	△	△	△

△ = Fiat Accessories

*for the full range of Fiat Accessories please contact your Fiat dealer

COLOUR COMBINATIONS.

	ACTIVE	DYNAMIC/ FAMILY	ACTIVE	DYNAMIC/ FAMILY
	FLASH RED 125	FLASH GREY 121	VIDEO RED 197	VIDEO GREY 199
SOLID COLOURS				
Rumba Red	199	-	■	-
Slow Jam Ivory	228	■	■	■
Ambient White	249	■	■	■
Line Blue	479	-	■	-
METALLIC COLOURS				
Bolero Red	163	-	■	-
Indie Ivory	261	-	■	-
Techno Grey	284	■	■	■
Foxtrot Azure	484	-	■	-
Cool Jazz Blue	487	■	■	-
Minimal Grey	612	■	■	■
Rockabilly Black	632	■	■	■
Breakdance Green	716	-	■	-

■ = standard - = not available

3rdF
4thF
2ndA^{ve}
8thT^{er}

CIAOFIAT
008003428
0000

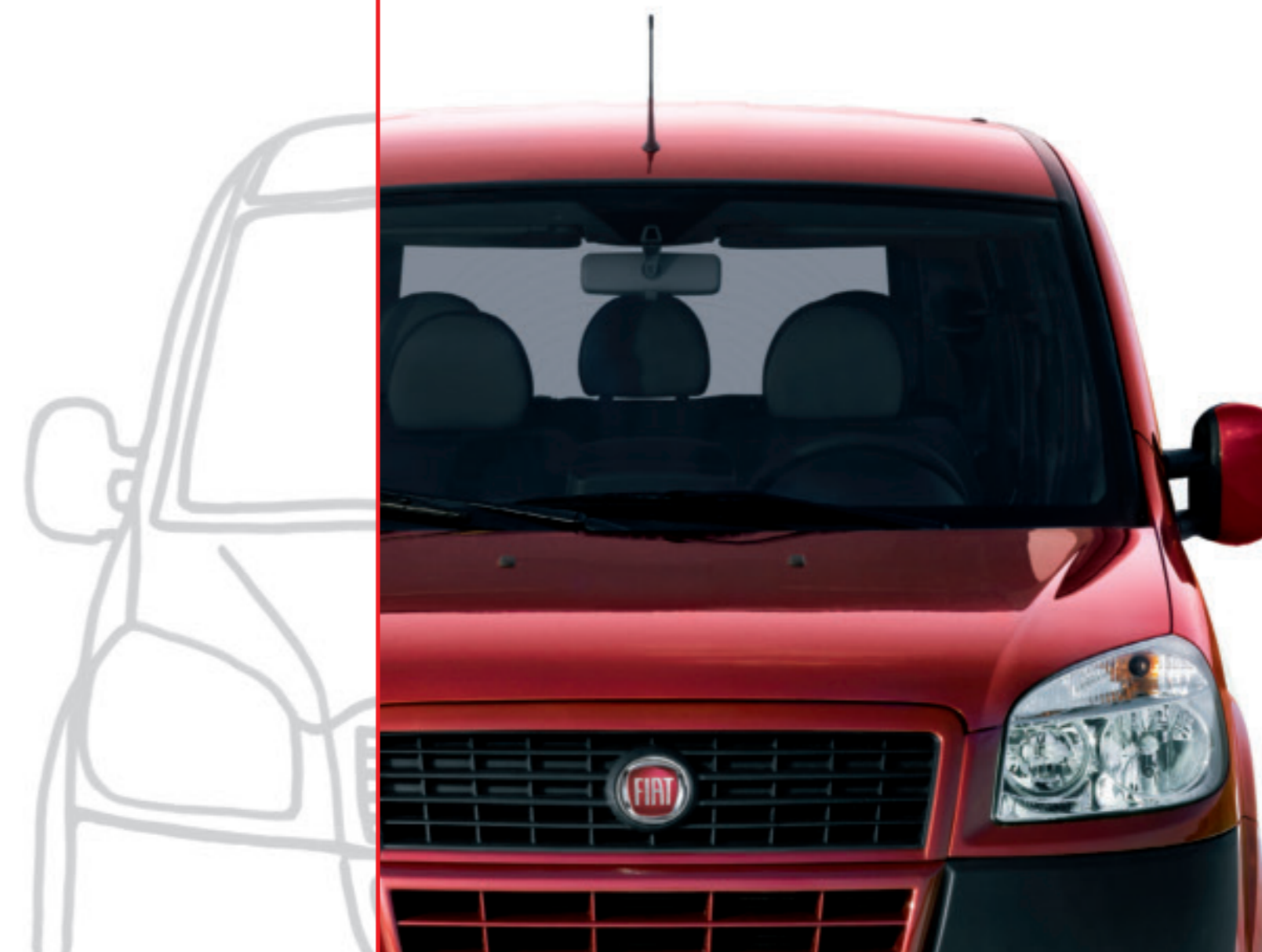
CIAO FIAT is the new single freephone number for customers and prospective customers – 00800 3428 0000. CIAO FIAT provides you with access to all our products and services in the UK and can be used even when you are abroad (the number can be called from most countries in Europe). The call is free from land lines in the UK and all Europe (except Switzerland). Mobile network charges may vary depending on whom your contract is with.

www.fiat.co.uk

Performance figures supplied by Fiat Group Automobiles SpA. Fuel consumption figures are in accordance with the Passenger Car Fuel Consumption and CO₂ Emissions Information Regulations 2001.
Products offered for sale may differ from those described or illustrated in this brochure due to later production changes in specifications, components or place of manufacture. The contents of this brochure are therefore to be treated as representations as to the current availability of products as described, or as to products actually offered for sale. Fiat Group Automobiles UK Ltd. reserves the right to make changes at any time, without notice, to prices, colours, materials, equipment, specifications and models and also to discontinue models. Variations in product specification do occur from time to time – please check the exact specification with the dealer at the time of order.
Fiat Group Automobiles UK Ltd, Fiat House, 240 Bath Road, Slough SL1 4DX.

Ed. 09/07

FIAT DOBLÒ



TRY ME...

Do I look delicate? No way. I'll take anything you can throw at me.

Fold my seats down and I will provide you with 3,000 litres of luggage space. Alternatively, I can seat up to seven adults in comfort.

I can be very accommodating. You'll see how versatile I am.

So what are you waiting for?

Just try me!

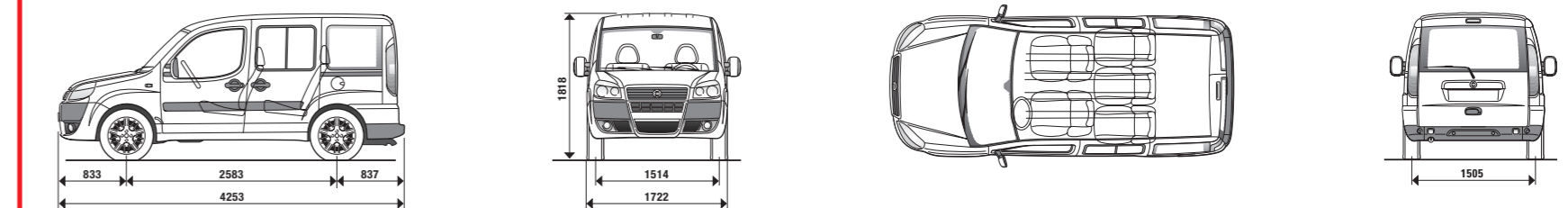


02 | 05

	1.4	1.3 T16v MultiJet	1.9 MultiJet (105 bhp)	1.9 MultiJet (120 bhp)
	ACTIVE - DYNAMIC	ACTIVE - FAMILY	ACTIVE - DYNAMIC	ACTIVE - DYNAMIC - FAMILY
DIMENSIONS				
Wheelbase (mm)	2583	2583	2583	2583
Length / Width (mm)	4253 / 1722	4253 / 1722	4253 / 1722	4253 / 1722
Maximum height, unladen (mm)	1818	1818	1818	1818
Front / rear track (mm)	1514 / 1505	1514 / 1505	1514 / 1505	1514 / 1505
Front / rear overhang	833 / 837	833 / 837	833 / 837	833 / 837
Luggage capacity VDA (dm ³) min / max	750 / 3000	750 / 3000	750 / 3000	750 / 3000
WHEELS				
Tyres	185 / 65 R 15	185 / 65 R 15	185 / 65 R 15	185 / 65 R 15
WEIGHTS & CAPACITIES				
Kerb weight (DIN) (kg)	1230 / 1250** / 1320*	1330 / 1350** / 1420*	1320	1340 / 1360** / 1430
Payload including driver (kg)	600	600	600	600
Towable loads (kg): (trailer braked / not braked)	1000 / 500	1300 / 500	1300 / 500	1300 / 500
Fuel capacity (lit.)	60	60	60	60
PERFORMANCE				
Top speed (mph)	92	97	102	110
FUEL CONSUMPTION (EC directive 1999/100) mpg (l/100km)				
Urban	30.7 / 30.1** (9.2 / 9.4**)	42.2 / 42.2* / 41.5** (6.7 / 6.7* / 6.8**)	37.7 (7.5)	37.7 / 37.7* / 36.7** (7.5 / 7.5* / 7.7**)
Extra-urban	44.8 / 43.5** (6.3 / 6.5**)	58.9 / 58.9* / 57.6** (4.8 / 4.8* / 4.9**)	58.9 (4.8)	54.3 / 54.3* / 53.3** (5.2 / 5.2* / 5.3**)
Combined	38.2 / 37.2** (7.4 / 7.6**)	51.4 / 51.4* / 50.4** (5.5 / 5.5* / 5.6**)	48.7 (5.8)	750 / 3000
EMISSIONS				
CO ₂ (g/km)	174 / 178*	145 / 145* / 148**	153	160 / 160* / 163**

Standard version only *Family version **High roof version

Note: dimensions in mm



18 | 19



LOVE ME...

Young, dynamic Doblò seeks comfort-loving companion for a long-term adventure.

I'm tall (5'10"), easy to get along with and ready to share your life. I'm calm and controlled: my fascia-mounted gearstick is within easy reach, and my clearly laid out instruments make me a pleasure to be with. Safe, relaxed, fun driving guaranteed.

I just love big families too. Open the sliding side doors and let them all come in – kids, dogs, cats, luggage, the kitchen sink.

So what are you waiting for?

Love me!





LOAD ME...

Don't be shy – I can handle just about anything.

Load, unload, fit, take down, stow, tilt, move over. So versatile. You won't believe how much I can carry.

My tailgate opens to a height of 5'10" too – load the luggage compartment however you like, I can take it.

Still want more? The Fiat Accessory range gives you thousands of possibilities – from carryall bars and cargo nets, to ski carriers.

So what are you waiting for?

Load me!





DRIVE ME...

Ever tried a MultiJet diesel engine?

Get me started and find out for yourself. Dynamic and responsive, but easy on the fuel.

It's probably my finest asset.

Pioneering technology + low fuel consumption x sheer driving pleasure = a MultiJet diesel engine.

So what are you waiting for?

Drive me!

1.4 ACTIVE - DYNAMIC

Capacity (cc)
1368

Emission level
Euro 4

Max. power output: bhp (kw-EC) @ rpm
77 (57) @ 6000

Peak torque: Nm-EC (KGM-EC) @ rpm
115 (11.7) @ 3000

Top speed (mph)
92

Fuel Consumption
(EC directive 1999/100) mpg (l/1000km)

Combined
38.2 / 37.2** (7.4 / 7.6**)

CO₂ emissions
174 / 178**

1.3 16v MultiJet ACTIVE - FAMILY

Capacity (cc)
1248

Emission level
Euro 4

Max. power output: bhp (kw-EC) @ rpm
85 (62) @ 4000

Peak torque: Nm-EC (KGM-EC) @ rpm
200 (20.4) @ 1750

Top speed (mph)
97

Fuel Consumption
(EC directive 1999/100) mpg (l/1000km)

Combined
51.4 / 51.4* / 50.4** (5.5 / 5.5* / 5.6**)

CO₂ emissions
145 / 145* / 148**

1.9 MultiJet (105 bhp) ACTIVE - DYNAMIC

Capacity (cc)
1910

Emission level
Euro 4

Max. power output: bhp (kw-EC) @ rpm
105 (77) @ 4000

Peak torque: Nm-EC (KGM-EC) @ rpm
200 (20.4) @ 1750

Top speed (mph)
102

Fuel Consumption
(EC directive 1999/100) mpg (l/1000km)

Combined
48.7 (5.8)

CO₂ emissions
153

1.9 MultiJet (120 bhp) ACTIVE - DYNAMIC FAMILY

Capacity (cc)
1910

Emission level
Euro 4

Max. power output: bhp (kw-EC) @ rpm
120 (88) @ 4000

Peak torque: Nm-EC (KGM-EC) @ rpm
210 (21.4) @ 3000

Top speed (mph)
110

Fuel Consumption
(EC directive 1999/100) mpg (l/1000km)

Combined
46.3 / 46.3* / 45.6** (6.1 / 6.1* / 6.2**)

CO₂ emissions
160 / 160* / 163**

* Family ** High roof



START ME...

Think you'll ever find another quite like me?

Think again. With me, you get whatever you want. I'm the perfect fit for your life.

I'm friendly, economical, versatile – and I'll never let you down.

So what are you waiting for?

Start me!

ACTIVE

Main standard features

- ABS with EBD
- Height-adjustable driver's seat with armrest
- Power steering
- Remote central locking
- Twin sliding rear doors
- Radio/CD player
- Electric front windows
- Driver and passenger airbags
- Tailgate
- 5 head restraints
- Rear seat pack: 60/40 split rear seats, 3-point centre seat belt
- Follow me home headlights
- Fiat Immobiliser (with rolling code)

FAMILY

(Active main standard features plus:)

- 7-seats
- 3rd row 2 three-point seat belts and head restraints
- Front foglights
- Body-coloured bumpers
- Split folding (1/3 – 1/3 – 1/3) second row seat with removable third row 2-seat bench

DYNAMIC

(Active main standard features plus:)

- 15" alloy wheels
- Air conditioning
- Radio/CD player
- Front foglights
- Body-coloured bumpers
- Electronically adjustable heated door mirrors



CHOOSE ME...

Express yourself with my complete colour range.

Outside, inside, add options or accessories – you choose how I look. Just go with how you feel.

Are you modern, brilliant and cool? Make me Cool Jazz Blue.

The choice is yours.

So what are you waiting for?

Choose me!





199 Rumba Red Solid



228 Slow Jam Ivory Solid



249 Ambient White Solid



479 Line Blue Solid



163 Bolero Red Metallic



261 Indie Ivory Metallic



284 Techno Grey Metallic



484 Foxtrot Azure Metallic



487 Cool Jazz Blue Metallic



612 Minimal Grey Metallic



632 Rockabilly Black Metallic



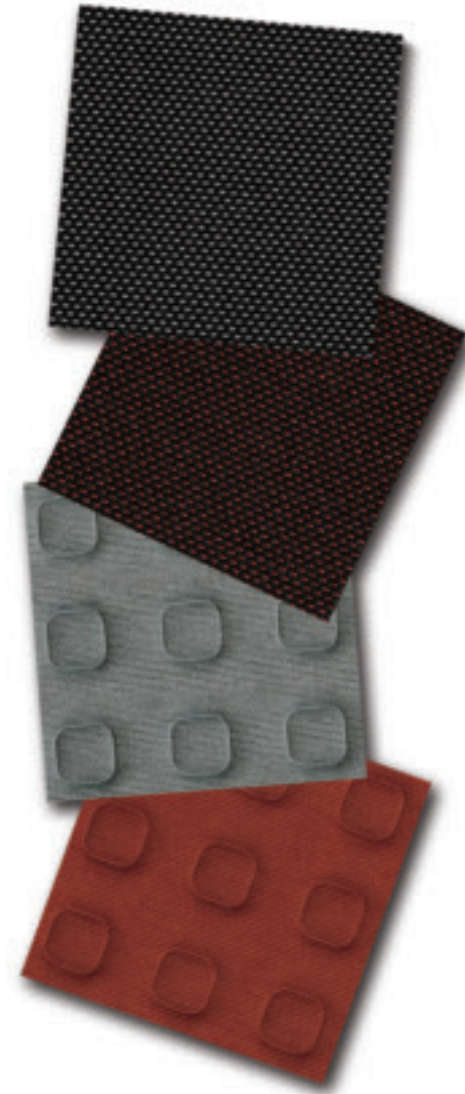
781 Breakdance Green Metallic

121 Flash Grey Cloth

125 Flash Red Cloth

199 Video Grey Cloth

197 Video Red Cloth



TECHNICAL SPECIFICATIONS.

	1.4	1.3 16v MultiJet	1.9 MultiJet (105 bhp)	1.9 MultiJet (120 bhp)
	ACTIVE - DYNAMIC	ACTIVE - FAMILY	ACTIVE - DYNAMIC	ACTIVE - DYNAMIC - FAMILY
ENGINE				
No. of cylinders, arrangement	4, in line, front transverse	4, in line, front transverse	4, in line, front transverse	4, in line, front transverse
Bore x stroke (mm)	72 x 84	69.8 x 82	82 x 90.4	82 x 90.4
Capacity (cc)	1368	1248	1910	1910
Emission level	Euro 4	Euro 4	Euro 4	Euro 4
Compression ratio	11.1 : 1	17.6 : 1	18.0 : 1	18.0 : 1
Max. power output: bhp (kW-EC) @ rpm	77 (57) @ 6000	85 (62) @ 4000	105 (77) @ 4000	120 (88) @ 4000
Peak torque: Nm-EC (kgm-EC) @ rpm	115 (11.7) @ 3000	200 (20.4) @ 1750	200 (20.4) @ 1750	210 (21.4) @ 3000
Timing system (control)	SOHC (toothed belt) with hydraulic tappets	DOHC's (chain) with hydraulic tappets	SOHC (toothed belt) with hydraulic tappets	SOHC (toothed belt) with hydraulic tappets
Fuel	Unleaded petrol	Diesel	Diesel	diesel
Fuel system	Phased sequential electronic MPI, returnless system	Electronically controlled 'Common Rail' MultiJet direct injection with turbocharger and intercooler	Electronically controlled 'Common Rail' MultiJet direct injection with turbocharger and intercooler	Electronically controlled 'Common Rail' MultiJet direct injection with turbocharger and intercooler
Ignition	Static, electronic, integrated with injection	By compression	By compression	By compression
TRANSMISSION				
Drive	Front	Front	Front	Front
Clutch	Dry single plate, hydraulically operated, with engagement spring	Dry single plate, hydraulically operated, with engagement spring	Dry single plate, hydraulically operated, with engagement spring	Dry single plate, hydraulically operated, with engagement spring
Gearbox, no. of speeds	5 + reverse	5 + reverse	5 + reverse	5 + reverse
STEERING				
Type	Rack and pinion with power steering	Rack and pinion with power steering	Rack and pinion with power steering	Rack and pinion with power steering
Steering diameter (m)	10.5	10.5	10.5	10.5
BRAKES - D (disc) - T (drum)				
Type	Hydraulic circuit with 2 independent cross-over circuits; disc brakes at front, drum brakes at rear	Hydraulic circuit with 2 independent cross-over circuits; disc brakes at front, drum brakes at rear	Hydraulic circuit with 2 independent cross-over circuits; disc brakes at front, drum brakes at rear	Hydraulic circuit with 2 independent cross-over circuits; disc brakes at front, drum brakes at rear
Front disc: diameter (mm)	D 284 (ventilated)	D 284 (ventilated)	D 284 (ventilated)	D 284 (ventilated)
Rear drum: diameter (mm)	T 228	T 228	T 228	T 228
SUSPENSION				
Front	Independent wheel MacPherson set-up with wishbones anchored to an auxiliary cross-member, hydraulic telescopic dampers, helical coil springs and anti-roll bar	Independent wheel MacPherson set-up with wishbones anchored to an auxiliary cross-member, hydraulic telescopic dampers, helical coil springs and anti-roll bar	Independent wheel MacPherson to set-up with wishbones anchored to an auxiliary cross-member, hydraulic telescopic dampers, helical coil springs and anti-roll bar	Independent wheel MacPherson to set-up with wishbones anchored to an auxiliary cross-member, hydraulic telescopic dampers, helical coil springs and anti-roll bar
Rear	Rigid beam with longitudinal leaf-springs	Rigid beam with longitudinal leaf-springs	Rigid beam with longitudinal leaf-springs	Rigid beam with longitudinal leaf-springs

STANDARD EQUIPMENT AND OPTIONS.

	ACTIVE	FAMILY	DYNAMIC		ACTIVE	FAMILY	DYNAMIC
STYLE FEATURES				Trip computer	■	■	■
Side rubbing strips	■	■	■	Exterior temperature sensor	-	○	○
Locking fuel cap	■	■	■	Height-adjustable driver's seat with armrest and lumbar support	■	■	■
Body-coloured grille surrounds	-	-	■	Folding (1/3 - 2/3) split second row seat	■	-	■
Body-coloured grille	-	-	■	Folding (1/3 - 1/3 - 1/3) split second row seat	-	■	-
Body-coloured manually-adjustable door mirrors	■	■	-	3rd row with 2-seat folding /removable bench	-	■	-
Body-coloured electrically-adjustable heated door mirrors	○	○	■	Rigid rear parcel shelf	■	-	■
Sliding side doors	■	■	■	Cargo retaining hooks in load space	■	■	■
Glazed asymmetrical twin rear doors with heated rear window and rear wiper	○	○	○	High roof (1.4, 1.3 16v MultiJet and 120 bhp 1.9 MultiJet engines)	○	-	○
Tailgate with heated rear window and rear wiper	■	■	■	Space saver spare wheel	■	-	■
Body-coloured bumpers	○	■	■	Full size spare wheel	-	■	○
15" alloy wheels	○	○	■	Longitudinal roof bars	○	○	○
Metallic paint	○	○	○	SAFETY			
COMFORT & FUNCTIONALITY				Front crumple-zone	■	■	■
Remote central locking	■	■	■	Steering wheel with high impact absorbent material and telescopic column	■	■	■
Electric front windows	■	■	■	Collapsible pedal support strut	■	■	■
Second row windows with sliding rear pane	■	■	■	Front and rear seats with antisubmarining cross-beam	■	■	■
Swivel-opening rear quarter light windows	■	■	■	Side impact door beams	■	■	■
Fascia with storage compartments and glove box	■	■	■	Fire Prevention System (FPS) with inertia switch on fuel pump	■	■	■
Oddments tray under cab roof	■	■	■	Steel fuel pipes in flame shield area	■	■	■
Ashtray / cigarette lighter / 12V power socket	■	■	■	Third brake light on rear doors or tailgate	■	■	■
Coin holder / card holder	■	■	■	Three-point front seat belts with retractor, adjustable for height and pretensioners	■	■	■
Height-adjustable steering wheel	■	■	■	Three-point rear seat belts with retractors	■	■	■
Heater with air recirculation	■	■	■	ABS + EBD (Electronic Brake Distribution)	■	■	■
Fiat Immobiliser with Rolling Code	■	■	■	Height-adjustable front and rear head restraints	■	■	■
Power steering	■	■	■	Driver's airbag	■	■	■
Dark tinted rear windows	-	○	○	Passenger airbag with deactivation	■	■	■
Sunvisors with ticket holder on driver side and courtesy mirrors on passenger side	■	■	■	Front side airbags	○	○	○
Air conditioning with pollen filter	○	○	■	Front foglights	○	■	■
2-speed and intermittent operation windshield wipers	■	■	■	AUDIO & TELEMATICS			
"Follow me home" headlights	■	■	■	Radio with CD player (RDS, TP, TA)	■	■	■
Rear parking sensors	○	○	○	CONNECT Nav+: RDS car radio with CD player, trip computer, 5" colour display, GSM handsfree telephone, map navigator, SOS button and services, voice controls for telephone and voice memo	-	○	○
2-lamp, 3-position ceiling light with timer	■	■	■				
Ceiling light for rear seat passengers	■	■	■				
Ceiling light in luggage compartment	■	■	■				
Instrument panel with speedometer, clock, water temperature gauge and digital odometer	■	■	■				
Rev counter	■	■	■				

■ = standard ○ = option - = not available



TRUST ME...

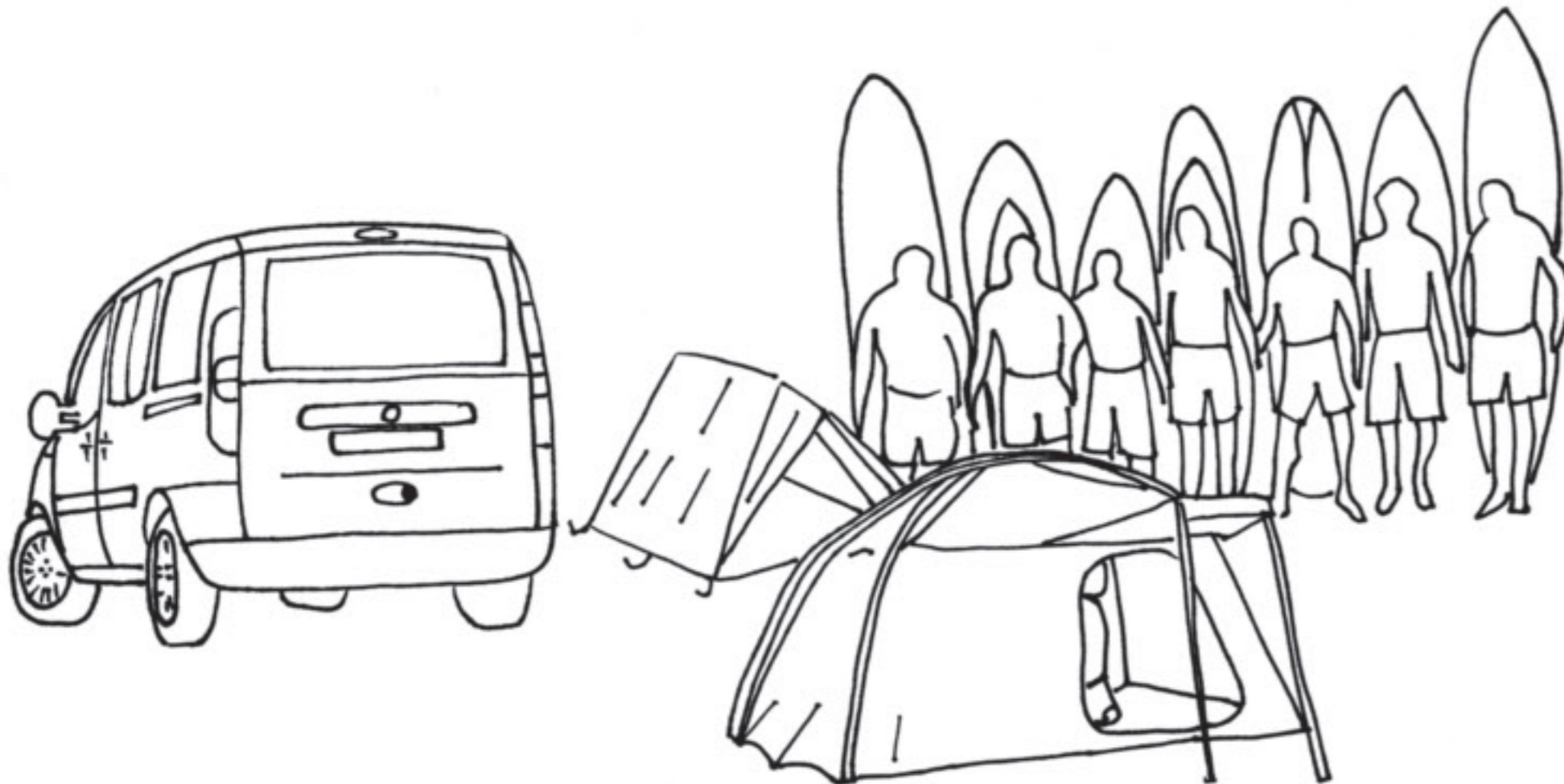
I'm fearless in traffic – a breeze to handle, and nimble too. Stretch out in my space.

I'll make you feel safe – whenever, wherever.

Here's why: I'm tough and resilient, but as comfortable and agile as an MPV.

So what are you waiting for?

Just trust me!



FIAT CUSTOMER BENEFITS

When you buy a new Fiat, you buy more than just a car. Behind every car we sell there is the reassurance of a whole range of customer benefits and services designed to make the ownership of your Fiat as enjoyable, affordable and trouble free as possible.

2 YEAR, UNLIMITED MILEAGE, MANUFACTURER WARRANTY

Any repairs required as the result of faulty materials or manufacturer are carried out free of charge – both for parts and labour.

3RD YEAR DEALER WARRANTY

This warranty covers most electrical and mechanical components in the third year, or up to 60,000 miles from the date of first registration, whichever occurs first. The warranty is provided free of charge and is subject to conditions (full details are available from your Fiat dealer).

3 YEAR PAINTWORK WARRANTY

Any paintwork defects due to faulty materials or manufacturer will be rectified free of charge during the first 3 years.

8 YEAR ANTI PERFORATION WARRANTY

Any perforation of the bodywork due to corrosion will be repaired free of all parts and labour charges during the first 8 years.

12 MONTHS PART AND REPAIR GUARANTEE

All genuine Fiat parts are guaranteed for 12 months, or the duration of the prevailing warranty on the vehicle, as are repairs carried out by any Fiat dealer using genuine parts.

FIXED SERVICE COSTS

All Fiat dealers operate a "Menu Pricing" programme, which guarantees fixed service and replacement costs, with no hidden extras. The price you see is the price you'll pay, unless you have given your consent for further work to be carried out.

INFORMATION AND CUSTOMER SERVICE

CIAO FIAT is the new single freephone number for customers and prospective customers - 00800 3428 0000*. CIAO FIAT provides you with access to all our products and services in the UK and can be used even when you are abroad (the number can be called from most countries in Europe).

The call is free from land lines in the UK and all Europe (except Switzerland). Mobile network charges may vary depending on whom your contract is with.

Fiat also believe it is important to stay in contact with you and will, subject to your agreement, telephone you from time to time to ensure that you are happy with your Fiat and the service you receive from your dealer. You can also access information about Fiat products and services online on our comprehensive website at www.fiat.co.uk.

†Only applicable to UK vehicles sourced through Fiat Group Automobiles UK Ltd.

*Pan-European Freephone number from all UK land lines. A minimum charge applies to calls made from mobiles based on network rates.

INSURED PRODUCTS AND SERVICES

The following insured products and services are provided through Fiat Auto Financial Services (Wholesale) Limited (for AA Assurance and Fiat Motor Insurance) and Fiat Auto Financial Services Limited (for Credit Protection Plans). Both companies are authorised and regulated by the Financial Services Authority for General Insurance.

1 YEAR'S AA ASSURANCE COVER

All new Fiats first registered on, or after, the 1st January 2005, come with 1 year's AA Assurance cover, which includes Roadside Assistance, Home Start, Relay, Relay Plus, European Cover and Accident Management.

This insured service is provided on a free of charge basis and is available 24 hours a day, throughout the year. AA Assurance also provides free access to travel information, legal advice and technical information.

MOTOR INSURANCE

Comprehensive car insurance is available at competitive premiums, with up to 65% No Claims Bonus transferable from your existing policy after five consecutive years of claim free driving.

For a quotation, either ring 0870 241 3805, or visit online through www.fiat.co.uk

FINANCE PLANS

Fiat Financial Services offers a comprehensive range of financial plans to suit private and business customers alike. Fiat I-deal, Fiat Finance Lease, Fiat Lease Purchase and traditional Hire Purchase can adapt to suit your individual requirements, whatever they may be. For example, you may wish to include the cost of one of our Credit Protection Plans, which provides added security for you, your family and your investment. Your Fiat dealer will be pleased to design a specific plan for you.

Please ask for more information. Written quotations available on request. A guarantee may be required. Fiat Financial Services is a division of Fiat Auto Financial Services Limited.

FIAT AUTO CONTRACTS - CONTRACT HIRE FOR THE BUSINESS USER

More and more businesses are turning to Contract Hire as a simple, tax efficient way of financing their fleet. Contract Hire allows the use of a vehicle for a pre-determined fixed period and cost (subject to mileage and conditions) and has many features and benefits that your Fiat dealer will be delighted to discuss with you.

At Fiat Auto Contracts we also provide a full support service, including maintenance, relief vehicle, AA Assurance and accident management, saving you time to concentrate on running your business. For more information, please contact your Fiat dealer, or call 01753 486885.

Contract Hire finance facilities are available to VAT registered businesses, subject to credit approval. Written quotations are available from Fiat Auto Contracts, 240 Bath Road, Slough, Berkshire, SL1 4DX.

Fiat Auto Contracts Limited is an appointed representative of Fiat Auto Financial Services (Wholesale) Limited.