

# GRANDE PUNTO VAN



**PROFESSIONAL**

## FROM GRANDE PUNTO TO GREAT VAN.

The sporty, solid and distinctive Grande Punto has found a new role: it's become a class leading van offering pure functional reliability. Giorgetto Giugaro's iconic design perfectly balances tough muscularity and elegance, in every detail. The Grande Punto Van is available in Active version, powered by a Euro4 compliant diesel MultiJet engine.

Compact, versatile and ready to work with you, the Grande Punto Van is a stylish professional partner.



*Standard features include Dualdrive power steering with City Function for finger light parking in tight city streets, electric windows and remote central locking. There is also a proper full-size spare wheel.*

*Unique light design: aggressive at the front and smoothly integrated at the rear.*



## RELAX, YOU'RE AT WORK.

Throughout a busy day, your van should be a relaxing and welcoming environment, equipped to make life easier. Grande Punto Van features comfortable, well bolstered seats. The reflection-free facia has been carefully designed to give excellent visibility and ease of use, while cabin comfort can be further enhanced with manual climate control and a pollen filter.

*Quality fabrics, tasteful design and well matched colours contribute to a great work place.*

*The trip computer provides real time data on all vehicle functions, while a radio/CD player is standard. A hands-free phone kit can be installed on as an optional extra.*



*Created by Fiat in collaboration with Microsoft, Blue and Me™ is compatible with a large majority of the electronic devices equipped with a USB port. It is also predisposed to be upgraded with new, advanced functions.*



# ROOM FOR YOUR BUSINESS.

Grande Punto Van is made for teamwork. A roomy cockpit gives saloon-like comfort, while the load space of up to 300 dm<sup>3</sup> provides generous space for tools and luggage. Tough fabric upholstery and thoughtfully placed lights make the load area functional and practical, while a strong tubular steel bulkhead protects the cockpit against heavy loads.

**Active standard equipment includes:**  
 Electric windows that work with the ignition switched off, rev counter, trip computer, body-coloured bumpers, CD/radio, remote central locking, and passenger airbag.  
 75 bhp 1.3 16v MultiJet engine.

Load space dimensions (mm)  
 Length 1200; width 1034 - height 842



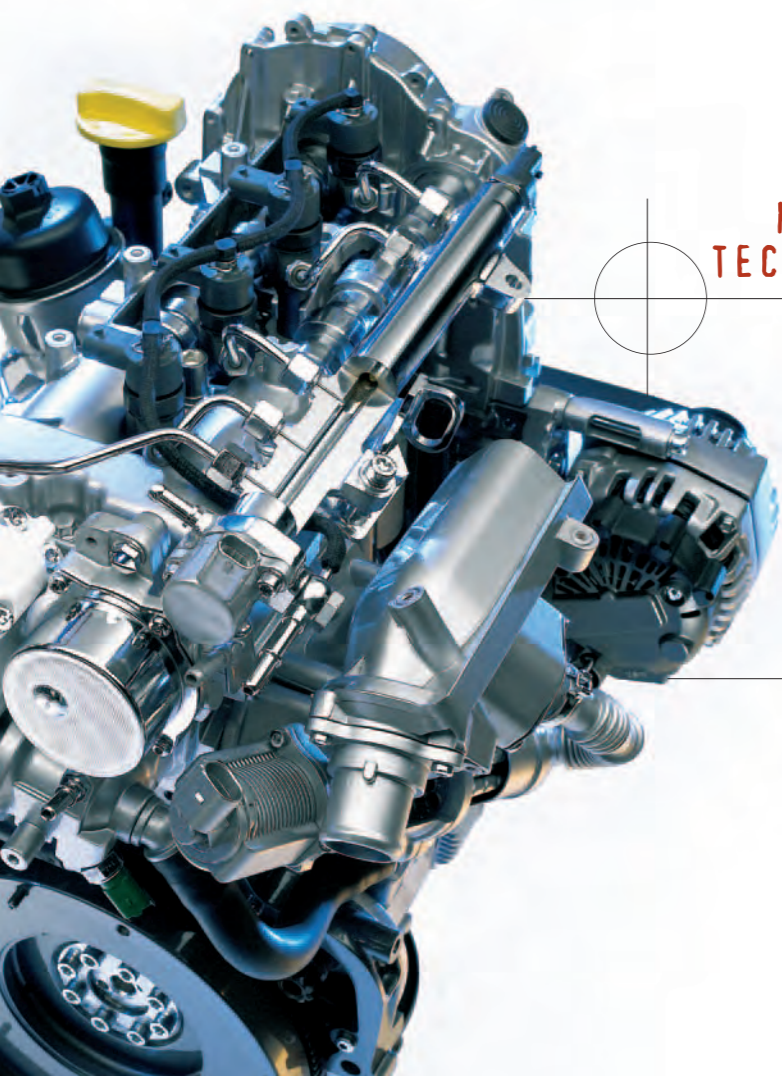
Load space volume

1 m<sup>3</sup>



Load space dimensions





**MULTIJET  
TECHNOLOGY**



**75 bhp 1.3 16v MultiJet**

Displacement 1248 cc  
75 bhp-EC at 4000 rpm  
19.4 kgm-EC at 1750 rpm  
'Common Rail' MultiJet direct injection with turbo and intercooler.

## POWER AND SAFETY WORKING FOR YOU.

Inspired vans need inspiring engines, like the Grande Punto Van's 1.3 16v MultiJet with 75 bhp: the smallest and most advanced Common Rail diesel yet. It sprints from 0-62 mph in 13.6 seconds and reaches a top speed of 103 mph yet still delivers class leading fuel consumption of 4.5 litres/100 km (62.8 mpg) on the combined cycle.

Naturally, safety is also uncompromised. The Grande Punto Van has a five-star Euro NCAP rating. Active safety measures include ABS with EBD and electronic stability control (ESP), which also features ASR, MSR, HBA and Hill Holder. Passive Safety encompasses two multistage front airbags, an immensely stiff body shell and non-deformable cockpit, anti-whiplash head restraints on front seats and seat belts with pre-tensioners and loadlimiters.

Delivering real power and peace of mind, the Grande Punto Van makes light work of the most demanding schedule.

# TECHNICAL SPECIFICATIONS.

Grande Punto Van	ACTIVE
<b>ENGINE</b>	<b>75 bhp 1.3 16v MultiJet</b>
No. of cylinders, arrangement	4, in line, transversely mounted at front
Bore x stroke (mm)	69.6 x 82.0
Displacement (cc)	1248
Ecology level	Euro 4
Emission control	oxidising catalyst in engine compartment, Lambda probe, electrical EGR valve
Compression ratio	17.6 : 1
Max. power output: kW-EC (bhp-EC) at rpm	55 (75) 4000
Peak torque: Nm-EC (kgm-EC) at rpm	190 (19.4) 1750
Timing system	2 OHCs (finger rocker arms with hydraulic tappets)
Fuel feed	'Common Rail' MultiJet direct injection with turbo and intercooler
Ignition	by compression
<b>TRANSMISSION</b>	
Drive	front
Gearbox, no. of speeds	5 + reverse
<b>STEERING SYSTEM</b>	
Rack type	Dualdrive™ power steering
Steering diameter (m)	10.5
<b>BRAKES - D (disk) - T (drum)</b>	
Front: Ø mm	D 257 (self-ventilating)
Rear: Ø mm	T 228
<b>SUSPENSION SYSTEM</b>	
Front	independent wheel McPherson set-up, telescopic shock absorbers, stabiliser bar with ball joint rods
Rear	interconnected wheels on torsion beam and torsion bar. Telescopic hydraulic shock absorbers
<b>WHEELS</b>	
Alloy wheels	175/65 R 15 T
Alloy wheels (option)	185/65 R 15 H
<b>ELECTRICAL SYSTEM (12 V)</b>	
Battery capacity (Ah)	50
<b>PERFORMANCE</b>	
Top speed mph (km/h)	103 (165)
Acceleration (sec.): 0-62 mph (0 to 100 km/h)	13.6
<b>FUEL CONSUMPTION (l/100 km)</b>	
1999/100 EC directive	
urban cycle	6.2
extra-urban cycle	3.5
mixed cycle	4.5
CO <sub>2</sub> emissions (g/km)	119

# DIMENSIONS AND WEIGHTS.

DIMENSIONS	
Wheelbase (mm)	2510
Front / rear track (mm)	1473 / 1466
Length / width / height ready for the road (mm)	4030 / 1687 / 1490
Loading compartment: length / width / height (mm)	1200 / 1034 / 842
Volume of (m <sup>3</sup> )	1.0
Fuel tank capacity (litres)	45
<b>WEIGHTS</b>	
Kerb weight DIN (kg)	1130
Payload including driver (kg)	520
Max. total weight - full load (kg)	1650
Towable weight - braked (kg)	1000
Towable weight - not braked (kg)	400

# MAIN STANDARD CONTENTS AND OPTIONS.

	ACTIVE		ACTIVE
<b>Line &amp; styling</b>			
Body coloured bumper	Standard		
Body-coloured door handles	—		
Electric wing mirrors	Standard		
Body-coloured electric wing mirrors	—		
Body-coloured electric wing mirrors with demisting function and exterior temperature sensor	041 •		
Chrome Shadow painted front grille	Standard		
Metallic paint	210 •		
Special paint	802 •		
10-spoke 15" alloy wheels	208 •		
5-spoke 15" alloy wheels	108 •		
14-spoke 16" aluminium wheels with 195/55 tyres	431 •		
Wider tyre + alloy wheels 185/65	432 •		
18-spoke 16" aluminium wheels with 195/55 tyres	439 —		
Darkened rear windows and back window	070 —		
Rear spoiler	923 •		
Sideskirts	926 •		
Leather steering wheel and gear knob	—		
Chrome Shadow painted gearlever frame, chromed gem on gear knob	—		
<b>Comfort / functionality</b>			
Fiat CODE (electronic antitheft)	Standard		
Electric front windows and electric door locking	Standard		
Remote door opening/locking	Standard		
Power windows active with key off	Standard		
In-cab electrical tailgate control	Standard		
Tilting courtesy handles (front)	Standard		
Follow me home headlamps	Standard		
Heated Rear Window (HRW)	029 •		
Front light fixture with fade-out effect spotlight	—		
Rear Wash/Wiper	101 •		
Luggage compartment with light	Standard		
Headlamp washer	102 •		
Luggage compartment cover	104 •		
Ladder carrier	477 •		
12 V power socket in luggage compartment	823 •		
Pocket in seatback	—		
Central unit with glass holder	Standard		
Instrument panel with speedometer, rev counter, fuel gauge, odometer and trip meter, digital clock, water temperature gauge	Standard		
Trip computer	Standard		
My car system (to customise vehicle function)	Standard		
Sliding front seats with position memory	Standard		
Height adjustable driver seat	Standard		
Height-adjustable front head restraints	Standard		
Steering wheel adjustable for height and distance	Standard		
Front armrest with oddments compartment	132 —		
Driver seat with electrical lumbar adjustment	623 —		
Dualdrive™ power steering	Standard		
4-speed heating and ventilation system	Standard		
Electrically controlled air recirculation and external air cut-out system	Standard		
Manual climate control system with pollen filter	025 •		
Dual-zone automatic climate control system (split functions for temperature and distribution)	140 •		
Electrical (PTC) unit heater	52Y —		
Sky Dome: electrical opening sunroof with large glazed surface	400 —		
Cruise control	416 —		
<b>Comfort / functionality</b>			
Front parking sensor	347 —		
Tyre inflation sensor	365 —		
Parking sensor at rear	508 •		
Particulate filter (DPF) for diesel engines	733 •		
Side mouldings	927 •		
Tyre repair multipurpose kit (Fix & Go)	499 •		
Full size spare wheel	980 Standard		
Dualogic™ gearbox on the 90 bhp 1.3 MultiJet 16v engine	407 —		
<b>Safety</b>			
ABS + EBD (Electronic Brake Distribution)	Standard		
Front airbags with dual stage Smart system	Standard		
Window bags	614 —		
Front side bags	505 —		
Controlled deformation front structure	Standard		
Bodywork with high-strength steel elements (Dualphase)	Standard		
Pedal box support with predetermined break pattern in a crash	Standard		
Fire Prevention System (FPS)	Standard		
Adjustable headlamps	Standard		
Front seats belts with pretensioner, load limiter and buckle sensor	Standard		
Anti-whiplash seats at front	42F —		
Front seats with antismothering cross-member	Standard		
My Car passenger airbag deactivation system	Standard		
ESP (Electronic Stability Program) + ASR/MSR, HBA and Hill Holder	392 —		
Front fog lights	097 •		
<b>Audio / Telematics</b>			
Provision to fit car radio with 4 speakers, 2 tweeters + aerial	—		
Radio with CD player and 6-button steering wheel mounted controls, 40W Hi-Fi sound system, 4 speakers + 2 tweeters (water resistant technology)	564 Standard		
Radio with CD and MP3 player and 6-button steering wheel mounted controls, 40W Hi-Fi sound system, 4 speakers + 2 tweeters (water resistant technology)	41A •		
Hi-Fi sound system with 100W bass-reflex type amplified subwoofer	718 —		
'Interscope' Hi-Fi sound system with 60W 4-channel power amplifier, with 100W bass-reflex type amplified subwoofer	4JF —		
Blue&Me™: Bluetooth™ technology hands-free system with steering-wheel mounted controls, instrument panel with multifunctional display, MP3 audio file reader with USB port	4J3 •		
Installation provision for CD-changer	565 —		

Standard = standard • = option — = not available

# BODY COLOURS.

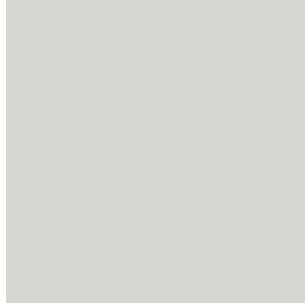
## Pastel colours.

---

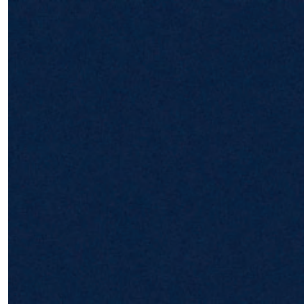
176 Exotica Red\*



249 Ambient White



475 Evocative Blue

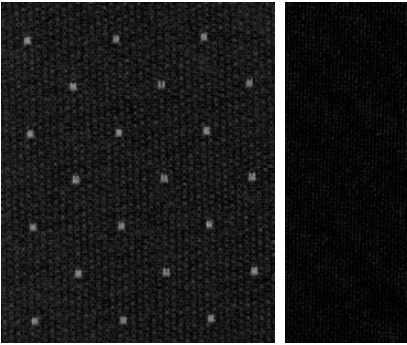


\*Special colour

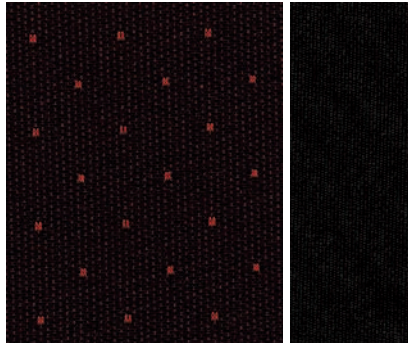
# UPHOLSTERY COLOURS.

## Active

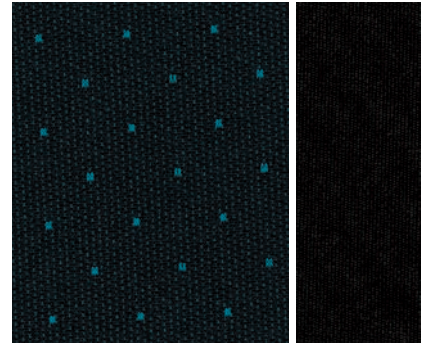
---



107 Drop Black



125 Drop Red



119 Drop Blue





CIAO FIAT is the new single freephone number for customers and prospective customers – 00800 3428 0000. CIAO FIAT provides you with access to all our products and services in the UK and can be used even when you are abroad (the number can be called from most countries in Europe). The call is free from land lines in the UK and all Europe (except Switzerland). Mobile network charges may vary depending on whom your contract is with.

Performance figures supplied by Fiat Group Automobiles SpA.

Products offered for sale may differ from those described or illustrated in this brochure due to later production changes in specifications, components or place of manufacture. The contents of this brochure are therefore not to be treated as representations as to the current availability of products as described, or as to products actually offered for sale. Fiat Group Automobiles UK Ltd. reserves the right to make changes at any time, without notice, to prices, colours, materials, equipment, specifications and models and also to discontinue models. Variations in product specification do occur from time to time – please check the exact specification with the dealer at the time of order.

Fiat Group Automobiles UK Ltd, Fiat House, 240 Bath Road, Slough SL1 4DX

**Ed. 11/07**

Fiat Marketing 04.3.4447.52 - S - 11/2007 - Printed in Italy - Tipografia Sosso - Torino  
Publication printed on chlorine-free paper.

**[www.fiatprofessional.co.uk](http://www.fiatprofessional.co.uk)**

