



Focus



At Ford, with such a long and successful motoring heritage behind us, we understand that everyone's lifestyle is different. What you look for in a vehicle will be different from the next person. It could be a vehicle that allows you to fit in all the family and hit the open road for the weekend, a zippy urban car that's perfect for tackling city traffic, or maybe you need a vehicle that allows you to play as hard as you work. We'd like to think that our family of vehicles is proof that Ford never stops looking forward, designing and engineering vehicles that catch your eye, are technologically advanced, consider the environment and help keep you safe. In short, no matter what your lifestyle, you're sure to find a Ford that can help you live more of your life.



Irresistible Design:

Because everyone's idea of the perfect car is different, Ford has designed and engineered a family of exciting, athletic and sleek vehicles that look great inside and out.



Great to sit in, great to drive:

There's nothing quite like driving a Ford. That's because every Ford is built from the ground up to be exhilarating to drive, with high levels of interior comfort along with the very latest safety systems that help keep you in control and protect you and your passengers.



Sustainability:

Ford recognises that climate change is a significant global challenge. We have an ongoing commitment to caring for the environment in every facet of our business, including delivering alternative fuel solutions such as diesel and LPG.



Innovation and Technology:

Thinking smarter means a comfortable, safe and enjoyable drive every time you turn the key. Our innovative solutions to everyday tasks using the latest technology save you time and connect you to the digital world.



Built to Last:

Every Ford is built not just for today but for tomorrow as well. So, when you buy a Ford you enjoy the type of quality that you can rely on, day in day out. Not just the look and feel, but the way it performs and the way it lasts.



So, where are you heading? A late breakfast with friends at your favourite café, or maybe you've decided it's time to leave the city behind for a few days. Either way, the moment you set eyes on its bold looks and athletic stance you instantly know the Ford **Focus** is ready for anything and everything that is happening in your life. Slide behind the wheel and the interior design makes you feel right at home. Plug in your iPod,[^] turn up the volume and you don't mind if that little weekend country getaway you're heading to is a few kilometres more. On the flipside, with such smooth, responsive engines getting around town has never been easier, or so much fun.

[^]Requires connection cable, sold separately. iPod is a trademark of Apple Inc.



Focus XRS Turbo shown in Electric Orange.

FOCUS XR5 TURBO

Power to the people.

With its sporty, rally-bred looks on show from every angle and performance to match, Focus XR5 Turbo is serious fun.

You know the old saying, "places to go, people to see." Because life's never quiet, the Focus XR5 Turbo is the perfect car to keep pace with you. So press the unique keyless start button, watch it glow and let this hot hatch work its magic. The high-end power and breathtaking performance guarantees that even a dash to the local shops will be exhilarating. That's because under the bonnet the smooth-revving 2.5L Duratec 20V 5 cylinder turbo engine pumps out a whopping 166kW of power and a massive 320Nm of torque. Add sports-tuned Independent Rear Suspension, Dynamic Stability Control (DSC) plus Traction Control, alloy wheels[^] and body-hugging Recaro sports seats and you'll enjoy all the trappings of power.

Focus XR5 Turbo shown in Performance Blue with optional overhead stripes.

^{*}Bluetooth[®] is a registered trademark of Bluetooth SIG Inc., and is used under license. [^]Set of 4.



Keyless Start Button



Recaro sports seats (optional leather trim shown)



Bluetooth[®] with Voice Control system*



18" Alloy wheel[^]



TURBO DIESEL FOCUS TDCi

The future's now.

The turbo diesel Focus TDCi is not just easier on your wallet but the environment too. That's because its fuel efficiency and lower emissions compared with its petrol equivalent are just as impressive as the sporty performance.

With rising fuel costs it's good to know you've chosen wisely every time you get behind the wheel. Featuring an advanced optional 6-speed PowerShift automatic transmission, combined with the renowned 2.0L Duratorq turbo diesel engine, the Focus TDCi's performance and fuel efficiency will both bring a smile to your face. So if you like the idea of saving money on fuel just as much as being conscious of your emissions, the Focus TDCi is a wise choice indeed.



PowerShift Automatic Transmission

The beauty of the optional 6 speed PowerShift automatic transmission featuring a dual-clutch gearbox is that it delivers the efficiency and dynamics of a manual with the ease of an automatic. So gear changes are not just faster and smoother but feel sportier too, allowing you to seamlessly tap into the Focus TDCi's outstanding 320Nm of torque. You'll find accelerating from a standing start to be responsive and smooth, with minimal compromise of power or traction.



Focus TDCi shown in Tango.



Focus Zetec shown in Titanium Grey.



Focus LX sedan shown in Thunder.

SUITS YOUR STYLE

A starring role.

Glide your Focus effortlessly into a car space at your favourite shopping strip and you'll make a memorable entrance and a real fashion statement too.

With smooth curves in all the right places the Focus is sure to be the centre of attention. The stylish design of the front grille and tail lamps complements its sculptured exterior lines. Inside is just as striking – the wrap-around driving environment boasts a slick centre console with ample technology at your fingertips.



Focus Zetec shown in Black Sapphire.



STAY CONNECTED

Take your world with you.

With a range of technology to help keep you connected, the Ford Focus takes 'living life on the road' to a whole new level.

Friends. Fun. Music. Making plans. Getting there. Changing plans. Moving on. Having your world at your fingertips when you're behind the wheel couldn't be easier. You have the freedom to do what you want, when you want, where you want. Every Focus includes on-board technology allowing you to play music direct from your iPod[^]. Adjust your stereo with a simple click using the steering column mounted audio controls[#]. Play music files from a USB stick in the Focus Zetec or chat with friends on the phone hands-free in your Focus XR5 Turbo thanks to Bluetooth[®] connectivity.[~] Plus, when it comes to staying close with your friends, the accommodating space and 60/40 split-fold rear seats gives you the flexibility to pack in everyone and their gear just how you want.



1. Enjoy the comfort of optional leather trim seats*
2. Connect your iPod[^] to the in-car audio*
3. Long trips are more enjoyable with cruise control*
4. Play music stored on your memory stick*
5. Elegant, easy to read instrument cluster*
6. Relax with the CD sound system*

[^]Requires connection cable, sold separately. iPod is a trademark of Apple Inc. #Not available on Focus CL.
[~]Bluetooth[®] is a registered trademark of Bluetooth SIG Inc., and is used under license. *Focus Zetec shown.



DRIVE TO FEEL ALIVE

Take control.

Whether it's a quick dash to return a DVD or a well-earned weekend escape, the super-responsive steering and handling of the Ford Focus brings every drive alive.

Wouldn't it be great if every time you jump behind the wheel you felt inspired? Every drive made you feel alive? Well, that's how you'll feel behind the wheel of the Focus. On petrol models, power is transferred smoothly from the 2.0L Duratec 16V 4 cylinder engine by a 5-speed manual or optional 4-speed automatic transmission with Sequential Sports Shift. Go a little higher and choose the Focus XR5 Turbo and you'll be rewarded with an exhilarating drive thanks to the highly refined 6-speed manual transmission* tapping into the awesome 166kW 2.5L 5 cylinder turbo engine. Or if taking control of your fuel costs is more important, then the turbo diesel Focus TDCi with either a 6-speed manual or optional PowerShift automatic transmission is sure to fit the bill.

*Automatic transmission not available on Focus XR5 Turbo



Focus LX shown with optional automatic transmission.



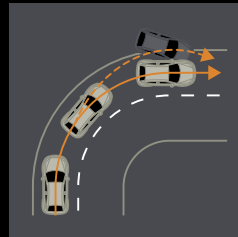
Focus Zetec interior shown with optional leather trim seats.

SAFETY

Big on safety.

The safety engineers and technicians at Ford believe that a small car should never compromise on safety.

Let's face facts, it can be a jungle out there. Well, a concrete and bitumen one, anyway. You need protection. So it's good to know that all Focus models come with a mighty long list of standard safety features that look after both you and your passengers. First up are driver, front passenger and side front airbags. Then there's standard ABS with Electronic Brakeforce Distribution (EBD). On all models except Focus CL* you get the added benefit of side curtain airbags and Dynamic Stability Control with Traction Control and Emergency Brake Assist. Equally impressive is the ability of your Focus to handle an accident situation as smoothly as possible. In an emergency, the Intelligent Safety System (ISS) goes to work in a fraction of a second, deploying the required safety features. There's also energy absorbing crumple zones to reduce the force of the impact and an anti-intrusion brake pedal that collapses away from the driver's legs to reduce the chance of leg injuries.



Dynamic Stability Control*

Dynamic Stability Control (DSC) strengthens your connection to the road and helps you avoid the problems of oversteer and understeer. DSC tracks the vehicle's movements and then works in tandem with Traction Control and ABS to help keep the vehicle under control.



ABS

Anti-lock Braking System (ABS) with Electronic Brakeforce Distribution (EBD) helps prevent the brakes from locking under heavy braking pressure, thereby increasing the amount of steering control in an emergency braking situation. Standard on every Focus.



Adding to your peace of mind is that Focus has a 5 star ANCAP safety rating available on all models except Focus XR5 Turbo. Focus CL is rated 5 stars when specified with an optional safety pack.

- 1 **Driver and front passenger airbags.**
Designed to enhance your protection in the event of a crash. Standard across the range.
- 2 **Side front airbags.**
Standard across the range for additional front occupant protection.
- 3 **Side curtain airbags.**
Standard across the range, except Focus CL (available as part of optional safety pack).
- 4 **Passenger safety cell.**
Incorporating high strength steel for greater all round strength and protection, the safety cell greatly reduces intrusion into the passenger space, minimising the likelihood of occupant injuries.
- 5 **Front and rear disc brakes.**
Standard across the range for efficient braking.
- 6 **Anti-lock Braking System (ABS).**
Standard across the range for greater control.
- 7 **Dynamic Stability Control.**
Helps to strengthen your connection to the road. Standard across the range, except Focus CL (available as part of optional safety pack).

*Side curtain airbags, Dynamic Stability Control with Traction Control and Emergency Brake Assist are available as an optional safety pack for Focus CL.

Focus Zetec shown for illustrative purposes.

RANGE

Big on choice.

Like to be spoiled for choice? You've got it. The Ford Focus delivers a range of exciting options that seem endless. Okay, so what did you have in mind? Hatch or sedan. Auto or manual. Petrol or diesel. There's a wide palette of eye-catching colours, too. So whether you're looking for a car that delivers pulse-quickening sports performance, something for zipping easily around town, or maybe it's just outstanding fuel economy you want, you can rest assured the smooth Focus range has a vehicle that'll suit your style and meet your lifestyle needs.



Focus CL sedan

- Engine: 2.0L petrol with 5-speed manual, or optional 4-speed auto
- ABS and 4 airbags (driver, front passenger and side front)
- Air-conditioning
- CD audio system with input facility for iPod*/MP3 player
- Control Blade Independent Rear Suspension
- 15" steel wheels*



Focus CL hatch

- Engine: 2.0L petrol with 5-speed manual, or optional 4-speed auto
- ABS and 4 airbags (driver, front passenger and side front)
- Air-conditioning
- CD audio system with input facility for iPod*/MP3 player
- Control Blade Independent Rear Suspension
- 15" steel wheels*



Focus LX sedan

Includes CL sedan features, plus:

- Side curtain airbags
- Dynamic Stability Control with Traction Control
- Cruise control with leather wrapped steering wheel
- Remote audio controls on steering column
- Front fog lamps
- 16" alloy wheels†



Focus LX hatch

Includes CL hatch features, plus:

- Side curtain airbags
- Dynamic Stability Control with Traction Control
- Cruise control with leather wrapped steering wheel
- Remote audio controls on steering column
- Front fog lamps
- 16" alloy wheels†



Focus TDCi hatch

- Engine: 2.0L turbo diesel with 6-speed manual
- Optional PowerShift automatic with 6-speed Sequential Sports Shift
- Same features as found on LX hatch



Focus Zetec hatch

Includes LX hatch features, plus:

- 6-disc in-dash CD audio system
- USB port (for iPod* integration and MP3 files on memory sticks)
- Sports suspension
- Body styling kit
- 17" alloy wheels†
- Optional leather trimmed seats



Focus XR5 Turbo

- Engine: 2.5L 166kW turbocharged petrol with 6-speed manual
- 18" alloy wheels†, sports body kit and Recaro sports seats
- ABS, 6 airbags and Dynamic Stability Control with Traction Control
- Sony premium 6-disc CD audio system (MP3 compatible)
- Bluetooth* with Voice Control system†
- Keyless start button

*Requires connection cable, sold separately. iPod is a trademark of Apple Inc. †Set of 4
Bluetooth is a registered trademark of Bluetooth SIG Inc. and is used under license.

Focus exterior colours.



Titanium Grey*



Ocean



Tango



Satin White[#]



Black Sapphire[^]



Tonic



Plum Blush



Moondust Silver



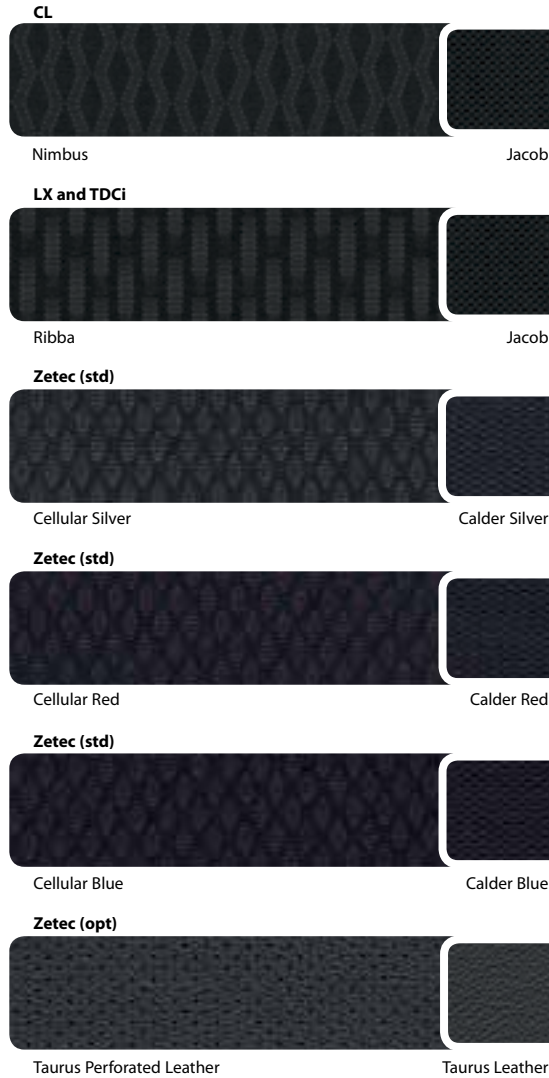
Colorado Red



Thunder

Focus interior seat trims.

Focus provides a wide range of contemporary interior seat trims for you to choose from that offer superior quality, durability and comfort.



EXTERIOR COLOUR AND INTERIOR SEAT TRIM COMBINATIONS					
COLOUR	CL	LX	TDCi	Zetec (standard)	Zetec (optional)
Satin White [#]	Nimbus with Jacob	Ribba with Jacob	Ribba with Jacob	Cellular Silver with Calder Silver	Taurus Perforated Leather with Taurus
Colorado Red	Nimbus with Jacob	Ribba with Jacob	Ribba with Jacob	Cellular Red with Calder Red	Taurus Perforated Leather with Taurus
Plum Blush	Nimbus with Jacob	Ribba with Jacob	Ribba with Jacob	Cellular Silver with Calder Silver	Taurus Perforated Leather with Taurus
Tonic	Nimbus with Jacob	Ribba with Jacob	Ribba with Jacob	-	-
Moondust Silver	Nimbus with Jacob	Ribba with Jacob	Ribba with Jacob	Cellular Blue with Calder Blue	Taurus Perforated Leather with Taurus
Black Sapphire [^]	Nimbus with Jacob	Ribba with Jacob	Ribba with Jacob	Cellular Red with Calder Red	Taurus Perforated Leather with Taurus
Titanium Grey [*]	Nimbus with Jacob	Ribba with Jacob	Ribba with Jacob	Cellular Red with Calder Red	Taurus Perforated Leather with Taurus
Tango	Nimbus with Jacob	Ribba with Jacob	Ribba with Jacob	-	-
Thunder	Nimbus with Jacob	Ribba with Jacob	Ribba with Jacob	Cellular Silver with Calder Silver	Taurus Perforated Leather with Taurus
Ocean	Nimbus with Jacob	Ribba with Jacob	Ribba with Jacob	Cellular Blue with Calder Blue	Taurus Perforated Leather with Taurus

[#]Satin White to be replaced by Frozen White as of May, 2010.

[^]Black Sapphire to be replaced by Panther Black as of May, 2010.

^{*}Titanium Grey to be replaced by Sea Grey as of May, 2010.

For colour references on Frozen White, Panther Black and Sea Grey please refer to Focus XRS Turbo exterior colours.

Focus XR5 Turbo exterior colours.



Frozen White with optional Blue stripes



Panther Black with optional Silver stripes



Sea Grey



Colorado Red with optional White stripes



Moondust Silver



Performance Blue with optional White stripes



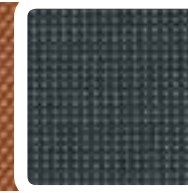
Electric Orange

Focus XR5 Turbo interior seat trims.

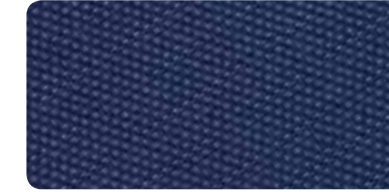
For sporty sophistication, the Focus XR5 Turbo offers exciting interior trims that perfectly complement the exterior colours. Choose from sporty Mondus seat trim or the optional smooth Recaro Sports Leather.



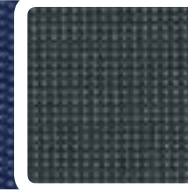
Mondus Orange



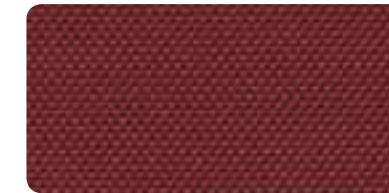
Dark Flint



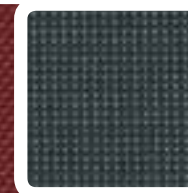
Mondus Performance Blue



Dark Flint

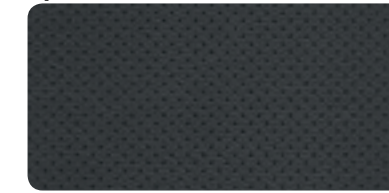


Mondus Red



Dark Flint

Optional



Recaro Sports Leather*



Ebony Sports Leather



Focus XR5 Turbo shown with Mondus Orange trim.

FOCUS XR5 TURBO		
EXTERIOR COLOUR	STANDARD TRIM	OPTIONAL TRIM
Panther Black	Mondus Red	Recaro Sports Leather
Panther Black with Silver stripes*	Mondus Red	Recaro Sports Leather
Moondust Silver	Mondus Performance Blue	Recaro Sports Leather
Sea Grey	Mondus Performance Blue	Recaro Sports Leather
Electric Orange [†]	Mondus Orange	Recaro Sports Leather
Performance Blue	Mondus Performance Blue	Recaro Sports Leather
Performance Blue with White stripes*	Mondus Performance Blue	Recaro Sports Leather
Colorado Red	Mondus Red	Recaro Sports Leather
Colorado Red with White stripes*	Mondus Red	Recaro Sports Leather
Frozen White	Mondus Performance Blue	Recaro Sports Leather
Frozen White with Blue stripes*	Mondus Performance Blue	Recaro Sports Leather

*Overhead stripes are optional and dictated by exterior colour selected. Only combinations represented in this brochure are available.
[†]Premium colour is an option that incurs an additional charge.

*Seating capacity reduced to four when optional Recaro Sports Leather seats are specified.

Accessories availability by model

EXTERIOR STYLING	CL	LX	Zetec	TDCi	XR5 Turbo
17" 5 spoke alloy wheels ¹	A	A	-	A	-
Alloy wheel lock nut set	A	A	A	A	S
Mullins - Motivatr 15" alloy wheels ^{1,2,3}	A	-	-	-	-
Mullins - Motivatr 16" alloy wheels ^{1,2,3}	A	A	-	A	-
Mullins - Motivatr 17" alloy wheels ^{1,2,3}	-	A	A	A	-
Mullins - Motivatr 18" alloy wheels ^{1,2,3}	-	-	-	-	A
Mullins - NOS 15" alloy wheels ^{1,2,3}	A	-	-	-	-
Mullins - NOS 16" alloy wheels ^{1,2,3}	A	A	-	A	-
Sedan spoiler ⁴	A	A	-	-	-
Lower front grille insert	A	A	A	A	-
EXTERIOR PROTECTION					
Bonnet protector	A	A	A	A	A
Mudspats ⁵	A	A	-	A	-
Weathershields - bubble ⁶	A	A	A	A	A
Weathershields - slimline ⁷	A	A	A	A	A
INTERIOR STYLING					
Alloy sports pedals	A	A	A	A	S
Alloy handbrake cover	A	A	A	A	S
Scuff plates	A	A	A	A	S
INTERIOR COMFORTS AND STORAGE					
Boot scuff guard	A	A	A	A	A
Cargo swing net	A	A	A	A	A
Anti-slip luggage compartment mat	A	A	A	A	-
Premium velour carpet mats ⁵	A	A	A	A	A
Standard carpet mats (set of 4)	A	A	A	A	A
Rubber mats ⁵	A	A	A	A	A

Personalise your Focus. The choice is yours.

You'll quickly discover that the Ford Vehicle Personalisation accessory range lets you personalise your Focus to perfectly suit your needs, whether it's to enhance the look of your Focus, make your journey more comfortable, or accessorise to meet the needs of your active lifestyle. For full details and to view the complete Focus accessory range visit ford.com.au



1. iPod integration. This cable integrates your iPod[®] with the Focus Zetec audio system.

2. Cargo swing net. Helps to keep your belongings and loose items in place during transit.

3. Scuff plates. Add a finishing touch with brushed aluminium scuff plates.

4. Boot scuff guard. Protects the rear bumper and boot lip from scuffs and scratches.

5. Bike carrier. Made from premium alloy for superior strength and stability.

6. Alloy sports pedals. Adds extra flair to your Focus interior.

7. 17" 5 spoke alloy wheel. Designed in Europe, these wheels give your Focus a sportier edge.

8. Lower front grille insert. Personalise the front appearance with this stylish grille.



INTERIOR COMFORTS AND STORAGE (CONTINUED)	CL	LX	Zetec	TDCi	XR5 Turbo
Dashmat	A	A	A	A	-
Personal organiser	A	A	A	A	A
Smoker's pack	A	A	A	A	A
Window shades	A	A	A	A	A
IN CAR ELECTRICAL AND ENTERTAINMENT					
Child activity organiser	A	A	A	A	A
Bluetooth [®] phone kit ⁸	A	A	A	A	S
iPod integration ⁹	-	-	A	-	-
Garmin Nüvi 260 portable satellite navigation system ²	A	A	A	A	A
Garmin Nüvi 760 portable satellite navigation system ²	A	A	A	A	A
TOWING AND CARRYING					
Carry bars	A	A	A	A	A
Bike carrier ¹⁰	A	A	A	A	A
Ski carrier ¹⁰	A	A	A	A	A
Ski/snowboard carrier ¹⁰	A	A	A	A	A
Rhino-Rack multi fit carry bars ²	A	A	A	A	A
Rhino-Rack luggage carrier - small/medium ²	A	A	A	A	A
Rhino-Rack roof top bike carrier ²	A	A	A	A	A
Rhino-Rack locking ski & snowboard carriers - 2pr/4pr/6pr ²	A	A	A	A	A
Rhino-Rack fishing rod carrier ²	A	A	A	A	A
Rhino-Rack universal holder ²	A	A	A	A	A
Rhino-Rack kayak/canoe carriers ²	A	A	A	A	A
Towpack ¹¹	A	A	A	A	-

S – Standard. A – Accessory that can be added at any time.

1. Wheels and tyres sold separately. 2. This accessory is a Supplier Branded Accessory and is not manufactured or warranted by Ford. The warranty is provided by the manufacturer of the accessory. 3. It is recommended that tyres matching original equipment specification be fitted to Mullins alloy wheels. 4. Available on sedan models only. 5. Front and rear sets sold separately. 6. Left and right side sold separately. 7. Set of two front and set of two rear sold separately. 8. Bluetooth[®] is a registered trademark of Bluetooth SIG Inc., and is used under license. 9. iPod is a trademark of Apple Inc. 10. Attaches to Genuine Ford carry bars (sold separately). 11. Subject to State and Territory regulations.

Specifications and options.

For full specifications and options visit ford.com.au

MODEL	CL/LX/Zetec			TDCi		XR5 Turbo
ENGINE	2.0 Litre Duratec 4 cylinder 16V			2.0 Litre Duratorq 4 cylinder 16V Turbo Diesel		2.5 Litre Duratec 5 cylinder 20V Turbo
Max power output ISO ¹	107kW @ 6000rpm			100kW @ 4000rpm		166kW @ 6000rpm
Max torque ISO ¹	185Nm @ 4500rpm			320Nm @ 2000rpm		320Nm @ 1600 to 4000rpm
Valve gear type	DOHC			DOHC		DOHC
Fuel system	Sequential EFI			Diesel direct injection		Sequential EFI
FUEL	CL/LX Manual	Zetec Manual	CL/LX/Zetec auto	Manual	Auto	Manual (only)
Fuel tank capacity (L)	55	55	55	53	53	55
Fuel consumption – ADR 81/02 (L/100km – rounded) ²	7.1	7.3	8.2	5.6	5.9	9.3
CO ₂ emissions (g/km) ²	169	174	194	147	157	224
Recommended fuel	ULP or PULP			Diesel		PULP
Ford Easy Fuel ^{®3}	-			-		S
SUSPENSION						
Front	Independent MacPherson struts with anti-roll bar					
Rear	Control Blade Independent Rear Suspension with anti-roll bar					
TOWING CAPACITIES (kg) Subject to State and Territory regulations	CL/LX/Zetec			TDCi		XR5 Turbo
Maximum (braked/unbraked trailer) - manual transmission	900 / 650			1000 / 680		-
Maximum (braked/unbraked trailer) - automatic transmission	750 / 650			1000 / 680		-

LUGGAGE CAPACITY	CL/LX - Sedan	CL/LX/Zetec - Hatch	TDCi	XR5 Turbo
Seats upright (volume, litres)	510	385	385	362
INTERIOR DIMENSIONS (mm)				
Front headroom	998	998	998	999
Front legroom	1058	1058	1058	1108
Rear legroom	908	908	908	853
EXTERIOR DIMENSIONS (mm)				
Overall length	4481	4337	4337	4357
Overall width (including exterior mirrors)	2020	2020	2020	2020
Overall height	1497	1497	1497	1497
Wheelbase	2640	2640	2640	2640

TRANSMISSION	CL	LX	Zetec	TDCi	XR5 Turbo
Manual, 5-speed	S	S	S	-	-
Manual, 6-speed	-	-	-	S	-
Manual, close-ratio 6-speed	-	-	-	-	S
Automatic with 4-speed Sequential Sports Shift	O	O	O	-	-
PowerShift automatic with 6-speed Sequential Sports Shift	-	-	-	O	-
RIDE & HANDLING					
Front (ventilated) and rear (solid) disc brakes	S	S	S	S	S
Electro-hydraulic power steering	S	S	S	S	S
Adjustable sports steering	-	-	-	-	S
Control Blade Independent Rear Suspension	S	S	S	S	S
Sports suspension	-	-	S	-	S
15" Steel wheels with full cover - 195/65 R 15V tyres (set of 4)	S	-	-	-	-
16" Alloy wheels (5 spoke) - 205/55 R 16V tyres (set of 4)	-	S	-	S	-
17" Alloy wheels (5 spoke split) - 205/50 R 17W tyres (set of 4)	-	-	S	-	-
18" Alloy wheels (5 Y-spoke) - 225/40 R 18 tyres (set of 4)	-	-	-	-	S
Space saver temporary steel spare wheel and tyre ⁴	S	S	S	S	S
Locking wheel nuts	A	A	A	A	S
INTERIOR					
Air-conditioning	S	S	S	S	S
Pollen filter	-	-	-	-	S
Two front cupholders	S	-	-	-	-
Centre console with two front cupholders and moveable armrest	-	S	S	S	S
Front windscreen wipers with variable intermittent feature	S	S	S	S	S
Driver and front passenger vanity mirror (with cover)	S	S	S	S	S
Front map lamps	-	-	-	-	S
Submarine lighting	-	-	-	-	S
Keyless start system with 'Ford Power' starter button	-	-	-	-	S
Leather sports gear knob (manual only)	-	-	-	-	S

Specifications and options.

For full specifications and options visit ford.com.au

INTERIOR (CONTINUED)	CL	LX	Zetec	TDCi	XR5 Turbo
Alloy sports pedals and handbrake cover	A	A	A	A	S
Power remote adjustable body colour external mirrors with turn lamps	S	S	S	S	S
Power front windows with driver one-touch down	S	-	-	-	-
Power front and rear windows with one-touch up/down & anti-trap feature	-	S	S	S	S
Luggage compartment illumination	S	S	S	S	S
Keyless entry with remote control (2 keys for XR5 Turbo)	S	S	S	S	S
Cruise control with leather wrapped steering wheel	-	S	S	S	-
3-spoke leather wrapped sports steering wheel with aluminium finish	-	-	-	-	S
SEATING					
Cloth trim	S	S	S	S	S
Leather trimmed seats	-	-	O	-	-
Recaro sports bucket driver seat (8-way adjustable)	-	-	-	-	S
Recaro Sports Leather seats (10-way adjustable front seats with variable heating controls) ⁵	-	-	-	-	O
Contoured and folding 60/40 split rear seats with flip fold cushion	S	S	S	S	S
Driver's seat adjustable lumbar support	-	-	-	-	S
AUDIO					
Single slot CD with AM/FM radio	S	S	-	S	-
6-disc in-dash CD with AM/FM radio	-	-	S	-	-
Sony premium sound system (8 speakers with MP3 compatible 6-disc in-dash CD and AM/FM radio)	-	-	-	-	S
Bluetooth® hands-free with Voice Control system ⁶	-	-	-	-	S
3.5mm auxiliary audio input facility for iPod/MP3/CD or tape player ⁷	S	S	S	S	S
USB input facility for music files and iPod/MP3 player integration ⁷	-	-	S	-	-
Remote audio controls mounted on steering column	-	S	S	S	S
EXTERIOR					
Sedan (4 doors)	S	S	-	-	-
Hatch (5 doors)	S	S	S	S	S
Power sunroof with tilt/slide functionality ⁸	-	-	-	-	O
Twin tail pipe exhaust	-	-	-	-	S
Body styling kit	-	-	S	-	S

EXTERIOR (CONTINUED)	CL	LX	Zetec	TDCi	XR5 Turbo
Front fog lamps	-	S	S	S	S
Rear spoiler (hatch only)	S	S	S	S	S
Tinted glass	S	S	S	S	S
SAFETY					
Intelligent Safety System includes:					
Driver and front passenger airbags	S	S	S	S	S
Side front airbags	S	S	S	S	S
Side curtain airbags	P ⁹	S	S	S	S
Pyrotechnic seatbelt buckle pretensioners (front only)	S	S	S	S	S
Beltminder system	S	S	S	S	S
Advanced Restraints Module	S	S	S	S	S
Crash severity sensors	S	S	S	S	S
Anti-lock Braking System (ABS) with Electronic Brakeforce Distribution (EBD)	S	S	S	S	S
Dynamic Stability Control (DSC) with Traction Control & Emergency Brake Assist (EBA)	P ⁹	S	S	S	S
Premium alarm with interior motion scanner	-	-	-	-	S
OPTION PACKAGES					
Safety Pack Dynamic Stability Control (DSC) with Traction Control & Emergency Brake Assist (EBA) & side curtain airbags	O	-	-	-	-

S – Standard O – Option that can be ordered before a vehicle is manufactured P – Part of optional pack. A – Accessory that can be added at any time.

1. All performance data for petrol models measured using 95RON fuel. 2. Figures obtained from controlled tests using ADR 81/02. Actual fuel consumption will depend on many factors including driving habits, prevailing conditions and your vehicle's equipment, condition and use. 3. Capless refueling with mis-fuel inhibitor. 4. If the spare wheel rim or tyre size differs from the other wheels fitted the vehicle should be driven with caution and the standard wheel and tyre be fitted as soon as possible. 5. Seating capacity reduced to four when optional Recaro Sports Leather seats are specified. 6. Bluetooth™ is a registered trademark of Bluetooth SIG Inc., and is used under license. 7. Connection cable sold separately. iPod is a trademark of Apple Inc. 8. Optional overhead stripes not available with sunroof option. 9. Available as part of optional safety pack.

Making your ownership experience even more rewarding.

A great car is just the beginning. We support you with a wide range of services that aim to make you one of the most satisfied vehicle owners in Australia. Speak to your Ford Dealer today about how we can help you make the most out of your vehicle ownership experience.

3 year/100,000km new car warranty.#

For three years or 100,000km, whichever comes first, your Ford is covered against any defects in factory materials or workmanship. This also applies to Genuine Ford Accessories you may have had fitted before you took delivery.

5 year warranty against perforation corrosion.#

It's reassuring to know that the original body of your gleaming new Ford is guaranteed against perforation corrosion for the first five years of its life. If perforation corrosion occurs, we'll fix it for free.

myFord Warranties & Insurance.

When you first turn the key of your brand new Focus you want to do so without a care in the world. Our range of myFord products gives you that extra peace of mind. For more information about myFord Warranties and Insurance, visit your participating Ford Dealer for further details on the plans that best suit your needs. Terms, conditions and eligibility criteria apply.

Want to contact us?

For answers to your questions, or help with any concern, contact our Customer Relationship Centre on 13 FORD (13 3673).

Running a fleet?

Our Ford Business Centre is available to assist fleet customers with information on Ford products and services. Call 1300 13 13 30.

Visit us on the web.

If you want more information on Ford or our entire product range, visit us on the Internet at ford.com.au



Focus LX sedan shown in Moon dust Silver.

#Conditions and exclusions apply. See your authorised Ford Dealer for details. This brochure is designed to provide you with a general introduction to the Ford products (including available optional equipment) referred to, and should be read in conjunction with the latest specification sheet. Because of changes in conditions and circumstances Ford* reserves the right, subject to all applicable laws, at any time, at its discretion, and without notice, to discontinue or change the features, designs, materials, colours and other specifications and the prices of its products, and to either permanently or temporarily withdraw any such products from the market without incurring any liability to any prospective purchaser or purchasers. The latest specification sheet should be referred to for information on the availability, ordering and use of optional equipment. Always consult an authorised Ford Dealer for the latest information with respect to features, specifications, prices, optional equipment and availability before deciding to place an order. *FORD MOTOR COMPANY OF AUSTRALIA LIMITED. (A.B.N. 30 004 116 223) Registered Office: 1735 Sydney Road, Campbellfield, Victoria 3061, Australia. Printed March 2010 FMLS941eb



ford.com.au