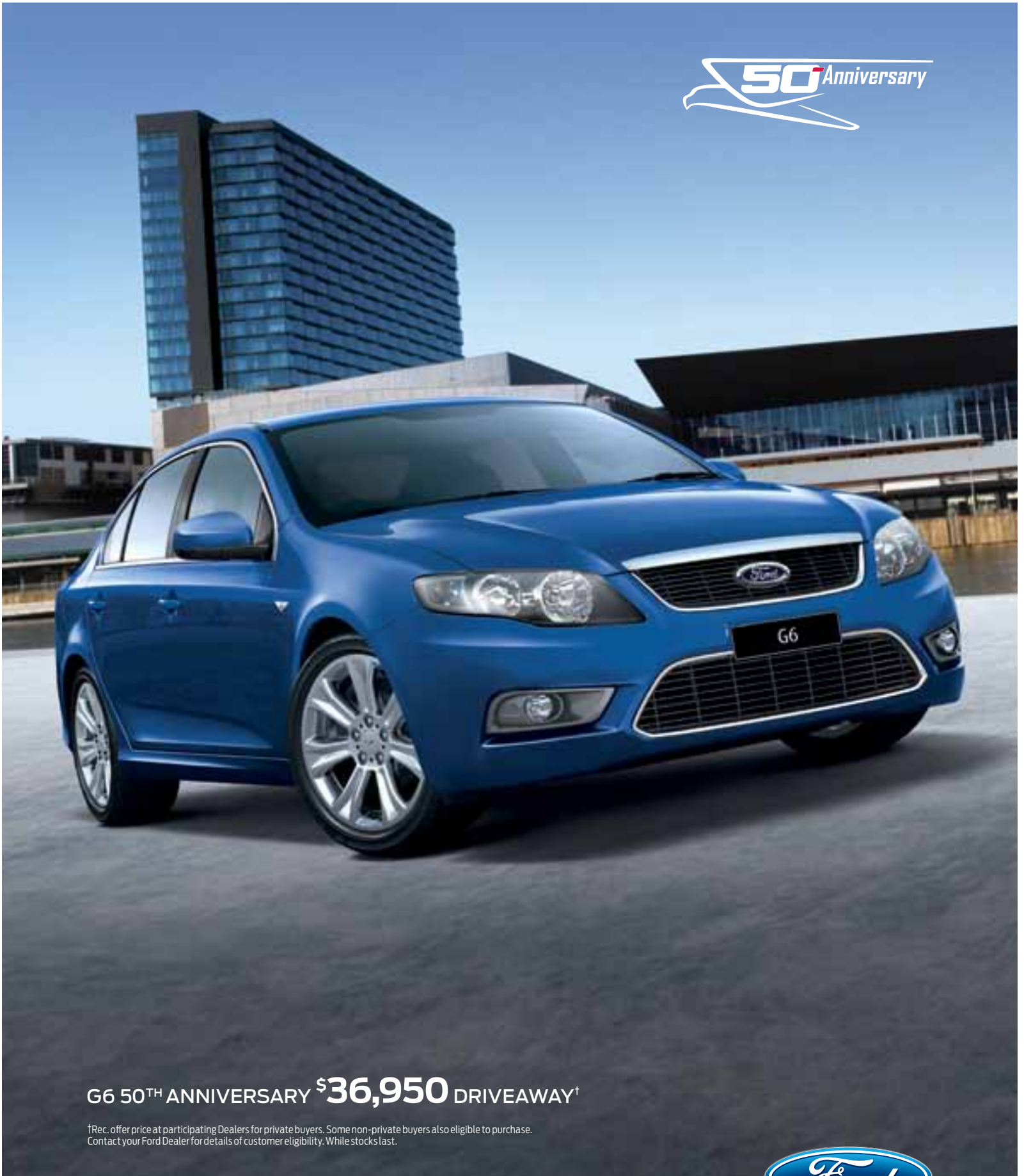


# G-SERIES 50<sup>TH</sup> ANNIVERSARY



G6 50<sup>TH</sup> ANNIVERSARY **\$36,950** DRIVEAWAY<sup>†</sup>

<sup>†</sup>Rec. offer price at participating Dealers for private buyers. Some non-private buyers also eligible to purchase. Contact your Ford Dealer for details of customer eligibility. While stocks last.



## 50<sup>th</sup> Anniversary G6



G6 50<sup>th</sup> Anniversary leather detailed seats.

### 50 years of Australian firsts.

For the past 50 years, Ford Falcon has led the way in Australian motoring. From being the first Australian built car to have a driver's airbag as standard to being the first locally built car to be awarded a 5-star ANCAP rating. With Ford's commitment to investing in the future, this tradition of firsts will continue.

### Packed with additional features.

From engines and transmissions that deliver true sports performance and exceptional fuel efficiency, to an interior that redefines family comfort, the G6 is perfectly designed for your next getaway, wherever that may be. In addition to the long list of standard features, the bold presence of the special

50<sup>th</sup> Anniversary G6 is enhanced by eye-catching extras. Like imposing 18" 7-spoke alloy wheels, a unique upper and lower front grille that really catches the eye, and special 50<sup>th</sup> Anniversary badging.

Slip inside and you'll find leather detailed seats, sports wrapped steering wheel and 50<sup>th</sup> Anniversary carpet mats. And safety is further enhanced by the inclusion of side curtain airbags.

### Celebrate today at your Ford Dealer.

Glance down the long list of additional features and you instantly realise the extra value the G6 50<sup>th</sup> Anniversary sedan packs in is well worth celebrating. Visit your Ford Dealer for a test drive and experience this unique G6 for yourself.



#### Unique colour accents.

Both the upper and lower grilles are enhanced with unique colour accents.



#### Sports steering wheel.

Unique sports leather wrapped steering wheels.



#### Side curtain airbags.

Further enhance your protection in the event of a crash.



#### 18" Alloy wheels.

18" 7-spoke alloy wheels and tyres.

## 50<sup>th</sup> Anniversary G6E

G6E Turbo 50<sup>th</sup> Anniversary shown in Edge.



### Celebrate with a 50<sup>th</sup> Anniversary G6E.

The G6E 50<sup>th</sup> Anniversary sedans have a level of refinement like no other. Whether you choose the G6E or G6E Turbo you'll be suitably impressed with their elegance and sophistication. In addition to their extensive array of standard features, both 50<sup>th</sup> Anniversary G6E sedans include unique 19" alloy wheels, leather detailed seats with 50<sup>th</sup> Anniversary logo embroidery, and an integrated satellite navigation system to ensure you reach your destination in comfort and ease. For those after the ultimate expression of luxury driving without the premium price tag, the G6E Turbo 50<sup>th</sup> Anniversary offers you just that.



#### Leather detailed seats.

50<sup>th</sup> Anniversary embossed leather detailed seats.



#### 19" Alloy wheels.

Unique 19" alloy wheels with distinctive accent colour.



#### Satellite Navigation.

Satellite Navigation with Suna™ Traffic Channel.



#### 50<sup>th</sup> Anniversary badging.

This special '50<sup>th</sup> Anniversary' badging adds the final touch.

## Colour Range



Winter White



Edge



Havana



Seduce



Lightning Strike



Chill



Silhouette



Sensation

## G-Series 50<sup>th</sup> Anniversary highlights

Additional features over a standard model	G6 50 <sup>th</sup>	G6E 50 <sup>th</sup>	G6E Turbo 50 <sup>th</sup>
<b>Interior</b>			
Sports leather wrapped steering wheel	●	S	S
Side curtain airbags	●	S	S
Leather detailed seats	●	–	–
50 <sup>th</sup> Anniversary embossed leather detailed seats	–	●	●
50 <sup>th</sup> Anniversary carpet mats	●	●	●
Integrated satellite navigation system with Suna Traffic Channel™	–	●	●
<b>Exterior</b>			
50 <sup>th</sup> Anniversary badging	●	●	●
Unique exterior colour accents – grilles, fog lamp bezels, rear bumper inserts	●	●	●
18" 7-spoke alloy wheels and tyres	●	–	–
19" G Series alloy wheels with new accent colour	–	●	●
<b>Optional</b>			
Matching alloy spare wheel	○	○	○
Towbar – 1,600kg rated*	○	○	○

● = Additional feature over a standard model. S = Standard. ○ = Optional.

™ Ford has an arrangement to provide the Suna Traffic Channel broadcast for a minimum of 5 years from the time of vehicle manufacture. Coverage includes Melbourne, Sydney, Brisbane, Adelaide, Perth and Gold Coast metropolitan areas. Refer to [www.sunatrafic.com.au](http://www.sunatrafic.com.au) for full details. \*Towbar sold separately when factory fitted.



[ford.com.au](http://ford.com.au)

This brochure is designed to provide you with a general introduction to the Ford Products (including available optional equipment) referred to, and should be read in conjunction with the latest specification sheet. Because of changes in conditions and circumstances Ford reserves the right, subject to all applicable laws, at any time, at its discretion, and without notice, to discontinue or change the features, designs, materials, colours and other specifications and the prices of their products, and to either permanently or temporarily withdraw any such products from the market without incurring any liability to any prospective purchaser or purchasers. The latest specification sheet should be referred to for information on the availability, ordering and use of optional equipment. Always consult an authorised Ford Dealer for the latest information with respect to features, specifications, prices, optional equipment and availability before deciding to place an order. ©FORD MOTOR COMPANY OF AUSTRALIA LIMITED. (A.B.N. 30 004 116 223) Registered Office: 1735 Sydney Road, Campbellfield, Victoria 3061, Australia. Printed October, 2010. FFALC0039