

FOCUS



Feel the difference

Fits your lifestyle perfectly

No matter how busy your life gets,
the Ford Focus will keep pace.



Focus XR5 Turbo shown in Moondust Silver.

So, where are you heading? A late breakfast with friends at your favourite café, or maybe you've decided it's time to leave the city behind for a few days. Either way, the moment you set eyes on its bold looks and athletic stance you instantly know the Ford Focus is ready for anything and everything that is happening in your life. Slide behind the wheel and the interior design makes you feel right at home. Plug in your iPod,* turn up the volume and you don't mind if that little weekend country getaway you're heading to is a few kilometres more. On the flipside, with such smooth, responsive engines, getting around town has never been easier, or so much fun.

*Requires connection cable, sold separately. iPod is a trademark of Apple Inc.

This brochure details specifications and features of the LV Focus Mk II model, with the exception of the XR5 turbo model which retains the original LV specifications. Consult your Ford Dealer for the most current specifications.



Keyless Start Button.

Focus XR5 Turbo

With its sporty, rally-bred looks on show from every angle and performance to match, the Focus XR5 Turbo is serious fun.



Focus XR5 Turbo shown in Performance Blue with optional overhead stripes.

Recaro sports seats
(optional leather trim shown).



Bluetooth® and Voice Control.*



18" Alloy wheel.*



When you live life in the fast lane, you need a car that will keep pace with you, like the Focus XR5 Turbo. And that's because when you lift the bonnet you'll find the smooth-revving 2.5L Duratec 20V 5 cylinder turbo engine which pumps out a whopping 166kW of power and a massive 320Nm of torque. Add sports-tuned Independent Rear Suspension, alloy wheels and body-hugging Recaro sports seats and you'll enjoy all the trappings of power.

*Bluetooth® is a registered trademark of Bluetooth SIG Inc., and is used under licence. #Set of four.

Turbo Diesel Focus TDCi

The turbo diesel Focus TDCi is not just easier on your wallet, but the environment too. That's because its fuel efficiency and lower emissions compared with its petrol equivalent are just as impressive as its sporty performance.



Focus TDCi shown in Tango.



PowerShift® Automatic Transmission.

The beauty of the optional 6 speed PowerShift® automatic transmission featuring a dual-clutch gearbox is that it delivers the efficiency and dynamics of a manual with the ease of an automatic. So gear changes are not just faster and smoother but feel sportier too, allowing you to seamlessly tap into the Focus TDCi's outstanding 320Nm of torque. You'll find accelerating from a standing start to be responsive and smooth, with minimal compromise of power or traction.

With rising fuel costs it's good to know you've chosen wisely every time you get behind the wheel. Featuring an advanced optional 6-speed PowerShift® automatic transmission, combined with the renowned 2.0L Duratorq turbo diesel engine, the Focus TDCi's performance and fuel efficiency will bring a smile to your face. So if you like the idea of saving money on fuel just as much as being conscious of your emissions, the Focus TDCi is a wise choice indeed.

It's all about choice

Whether you need the extra space that a sedan delivers, or the convenience of a hatch, Focus gives you two very stylish options.



Focus LX sedan shown in Moondust Silver.

The beauty of having choices is that you can choose the Focus that best suits your lifestyle. For instance, those continually zipping around town to catch up with friends or heading home after a day in the office will enjoy the freedom the Focus Hatch offers, letting you easily manoeuvre into that perfect car park right out the front of the cafe! For those whose lifestyle requires a bit more space and room the Focus Sedan is the ideal choice, perfect for that last minute decision for a weekend getaway whilst giving you the flexibility and space for your passengers and their gear.

Suits your style

Glide your Focus effortlessly into a car space at your favourite shopping strip and you'll make a memorable entrance and a real fashion statement too.



Focus Zetec shown in Panther Black.

With smooth curves in all the right places, the Focus is sure to be the centre of attention. The stylish design of the front grille and tail lamps complements its sculptured exterior lines. Inside is just as striking – the wrap-around driving environment boasts a slick centre console with ample technology at your fingertips.



Integrate your iPod[®] to the in-car audio.*



Bluetooth[®] and Voice Control.*

Stay connected

With a range of technology to help keep you connected, the Ford Focus takes 'living life on the road' to a whole new level.



Enjoy the comfort of optional leather trim seats.*



Relax with the CD sound system.*



Long trips are more enjoyable with cruise control.*

Friends. Fun. Music. Making plans. Getting there. Changing plans. Wherever you're heading and whatever you're doing, having your world at your fingertips when you're behind the wheel couldn't be easier. Technology on-board the Focus means you can chat with friends hands free using the built in Bluetooth[®] and Voice Control,[†] or control your iPod[®] or USB stick[#] using the car's steering wheel buttons. What's more, the 60/40 split-fold rear seats give you the flexibility to pack in everyone and everything.

[†]Requires connection cable, sold separately. iPod is a trademark of Apple Inc. [#]Bluetooth[®] with Voice Control not available on Focus CL. USB slot not available on Focus CL or XR5 Turbo. ^{*}Bluetooth[®] is a registered trademark of Bluetooth SIG Inc., and is used under licence. ^{*}Focus Zetec shown.

Drive to feel alive

Whether it's a quick dash to return a DVD or a well-earned weekend escape, the super-responsive steering and handling of the Ford Focus brings every drive alive.



Focus LX shown with optional automatic transmission.

Wouldn't it be great if every time you jump behind the wheel you felt inspired? Every drive made you feel alive? Well, that's how you'll feel behind the wheel of the Focus. On petrol models, power is transferred smoothly from the 2.0L Duratec 16V 4 cylinder engine by a 5-speed manual or optional 4-speed automatic transmission with Sequential Sports Shift. Go a little higher and choose the Focus XR5 Turbo and you'll be rewarded with an exhilarating drive thanks to the highly refined 6-speed manual transmission* tapping into the awesome 166kW 2.5L 5 cylinder turbo engine. Or if taking control of your fuel costs is more important, then the turbo diesel Focus TDCi with either a 6-speed manual or optional PowerShift® automatic transmission is sure to fit the bill.

*Automatic transmission not available on Focus XR5 Turbo.

Comfort and quality

The stylish design of the exterior continues once you slip behind the wheel with quality finishes, smooth contours and ergonomically located controls.



Focus Zetec interior shown with optional leather trim seats.

The luxurious interior is contemporary in design and gives a real feeling of comfort and warmth, while the thoughtfully laid out interior means that every little driver detail has been carefully considered and applied to ensure a comfortable driving experience.

Big on safety

The safety engineers and technicians at Ford believe that a small car should never compromise on safety.

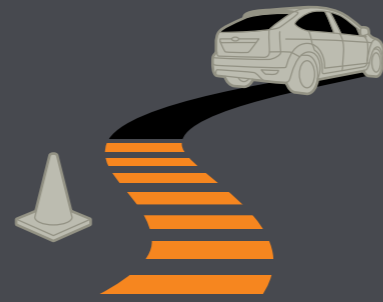
- 1 Driver and front passenger airbags.**
Designed to enhance your protection in the event of a crash. Standard across the range.
- 2 Side front airbags.**
Standard across the range for additional front occupant protection.
- 3 Side curtain airbags.**
Standard across the range.
- 4 Passenger safety cell.**
Incorporating high strength steel for greater all round strength and protection, the safety cell greatly reduces intrusion into the passenger space, minimising the likelihood of occupant injuries.
- 5 Front and rear disc brakes.**
Standard across the range for efficient braking.
- 6 Anti-lock Braking System (ABS).**
Standard across the range for greater control.
- 7 Dynamic Stability Control.**
Helps to strengthen your connection to the road. Standard across the range.



Adding to your peace of mind is that Focus has a 5 star ANCAP safety rating as standard on all models except Focus XR5 Turbo.

Dynamic Stability Control.

Dynamic Stability Control (DSC) strengthens your connection to the road and helps you avoid the problems of oversteer and understeer.



ABS.

Anti-lock Braking System (ABS) with Electronic Brakeforce Distribution (EBD) helps prevent the brakes from locking under heavy braking pressure.

Let's face facts, it can be a jungle out there. Well, a concrete and bitumen one, anyway. You need protection. So it's good to know that all Focus models come with a mighty long list of standard safety features that look after both you and your passengers. First up are driver, front passenger and side front airbags. Then there's standard ABS with Electronic Brakeforce Distribution (EBD). On all models, you get the added benefit of side curtain airbags and Dynamic Stability Control with Traction Control and Emergency Brake Assist. Equally impressive is the ability of your Focus to handle an accident situation as smoothly as possible. In an emergency, the Intelligent Safety System (ISS) goes to work in a fraction of a second, deploying the required safety features. There's also energy absorbing crumple zones to reduce the force of the impact and an anti-intrusion brake pedal that collapses away from the driver's legs to reduce the chance of leg injuries.

The Focus range. Big on choice.

You'll find the Focus range spoils you for choice with a range of exciting options that seem endless.



Focus CL hatch

- Engine: 2.0L petrol with 5-speed manual, or optional 4-speed auto
- Dynamic Stability Control (DSC)
- ABS and 6 airbags (driver, front passenger, side front and side curtain)
- Air-conditioning
- CD audio system with input facility for iPod[®]/MP3 player
- Control Blade Independent Rear Suspension
- 15" steel wheels*



Focus CL sedan

- Engine: 2.0L petrol with 5-speed manual, or optional 4-speed auto
- Dynamic Stability Control (DSC)
- ABS and 6 airbags (driver, front passenger, side front and side curtain)
- Air-conditioning
- CD audio system with input facility for iPod[®]/MP3 player
- Control Blade Independent Rear Suspension
- 15" steel wheels*



Focus LX hatch

Includes CL hatch features, plus:

- Bluetooth[®] and Voice Control*
- USB/iPod[®] Integration
- Cruise control with leather wrapped steering wheel
- Front fog lamps
- 16" alloy wheels*
- Remote audio controls on steering column



Focus LX sedan

Includes CL sedan features, plus:

- Bluetooth[®] and Voice Control*
- USB/iPod[®] Integration
- Cruise control with leather wrapped steering wheel
- Front fog lamps
- 16" alloy wheels*
- Remote audio controls on steering column



Focus TDCi hatch

- Engine: 2.0L turbo diesel with 6-speed manual
- Optional PowerShift automatic with 6-speed Sequential Sports Shift
- Same features as found on LX hatch



Focus XR5 Turbo

- Engine: 2.5L 166kW turbocharged petrol with 6-speed manual
- 18" alloy wheels,* sports body kit and Recaro sports seats
- Bluetooth[®] and Voice Control*
- ABS, 6 airbags and Dynamic Stability Control with Traction Control
- Sony premium 6-disc CD audio system (MP3 compatible)
- Keyless start button



Focus Zetec hatch

Includes LX hatch features, plus:

- Sports suspension
- Body styling kit
- 17" alloy wheels*
- Optional leather trimmed seats

Okay, so what did you have in mind? Hatch or sedan? Auto or manual? Petrol or diesel? There's a wide palette of eye-catching colours, too. So whether you're looking for a car that delivers pulse-quickenning sports performance, something for zipping easily around town, or simply outstanding fuel economy, you can rest assured the smooth Focus range has a vehicle that'll suit your style and meet your lifestyle needs.

*Requires connection cable, sold separately. iPod is a trademark of Apple Inc. #Set of four. *Bluetooth[®] is a registered trademark of Bluetooth SIG Inc., and is used under licence.

Exterior colours & interior seat trims

Choose from a wide range of striking exterior colours and dynamic interior seat trims that offer superior levels of comfort and durability.



Sea Grey



Frozen White



Moondust Silver



Tango



Panther Black



Colorado Red



Ocean



Tonic



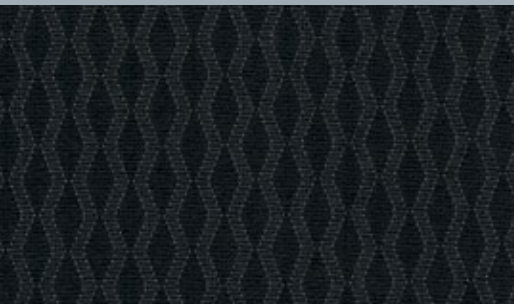
Thunder

Exterior colour and interior seat trim combinations

Colour	CL	LX	TDCi	Zetec (standard)	Zetec (optional)
Frozen White	Nimbus with Jacob	Ribba with Jacob	Ribba with Jacob	Cellular Silver with Calder Silver	Taurus Perforated Leather with Taurus
Colorado Red	Nimbus with Jacob	Ribba with Jacob	Ribba with Jacob	Cellular Red with Calder Red	Taurus Perforated Leather with Taurus
Tonic	Nimbus with Jacob	Ribba with Jacob	Ribba with Jacob	—	—
Moondust Silver	Nimbus with Jacob	Ribba with Jacob	Ribba with Jacob	Cellular Blue with Calder Blue	Taurus Perforated Leather with Taurus
Panther Black	Nimbus with Jacob	Ribba with Jacob	Ribba with Jacob	Cellular Red with Calder Red	Taurus Perforated Leather with Taurus
Sea Grey*	Nimbus with Jacob	Ribba with Jacob	Ribba with Jacob	Cellular Red with Calder Red	Taurus Perforated Leather with Taurus
Tango	Nimbus with Jacob	Ribba with Jacob	Ribba with Jacob	—	—
Thunder	Nimbus with Jacob	Ribba with Jacob	Ribba with Jacob	Cellular Silver with Calder Silver	Taurus Perforated Leather with Taurus
Ocean	Nimbus with Jacob	Ribba with Jacob	Ribba with Jacob	Cellular Blue with Calder Blue	Taurus Perforated Leather with Taurus

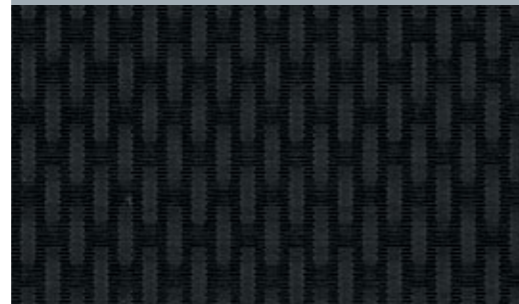
CL

Nimbus
Jacob



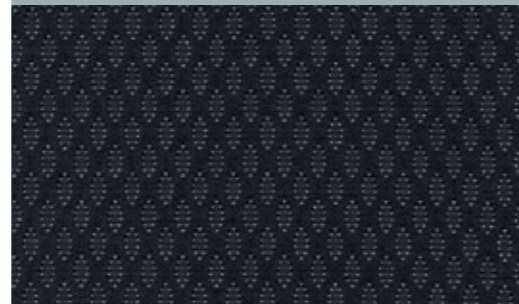
LX and TDCi

Ribba
Jacob



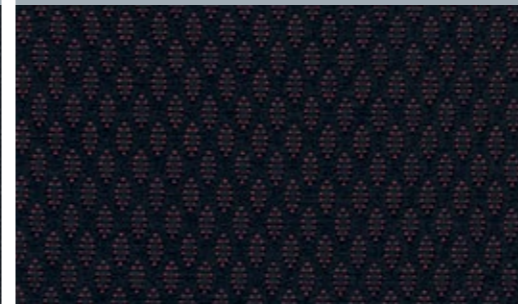
Zetec (std)

Cellular Silver
Calder Silver



Zetec (std)

Cellular Red
Calder Red



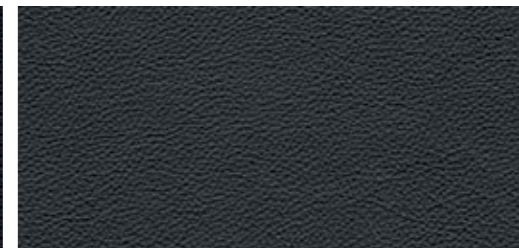
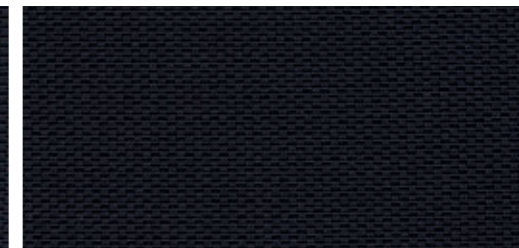
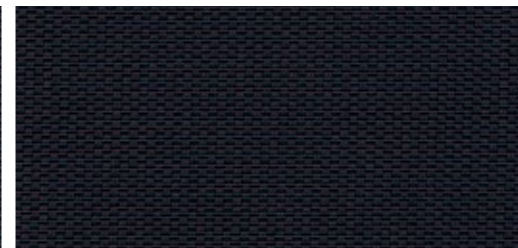
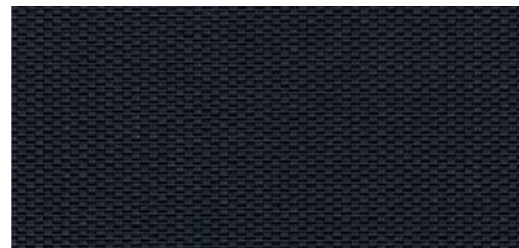
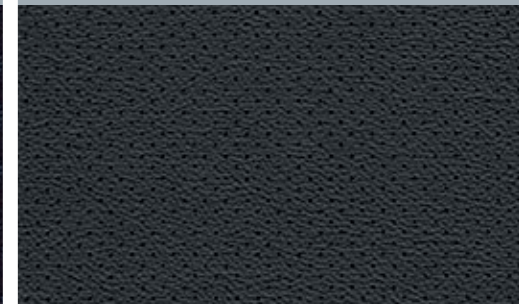
Zetec (std)

Cellular Blue
Calder Blue



Zetec (opt)

Taurus Perforated Leather
Taurus Leather



Focus XR5 Turbo exterior colours & interior seat trims

Adding a sporty visual edge to the Focus XR5 Turbo is a striking range of exterior colours, perfectly complemented by the Mondus seat trim or the optional Recaro Sports Leather.



Colorado Red with optional White stripes



Frozen White with optional Blue stripes*



Moondust Silver



Performance Blue with optional White stripes*



Panther Black with optional Silver stripes*



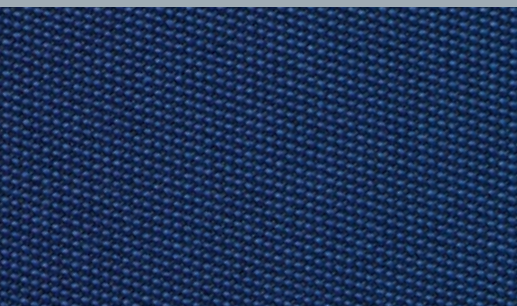
Sea Grey

Focus XR5 Turbo

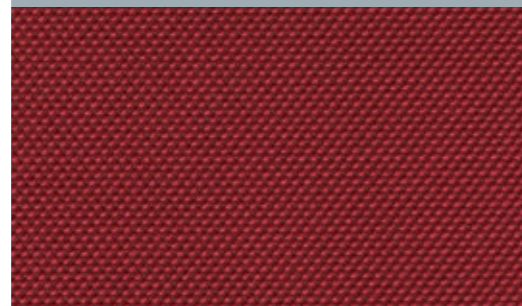
Exterior colour	Standard trim	Optional trim
Panther Black	Mondus Red	Recaro Sports Leather#
Panther Black with Silver stripes*	Mondus Red	Recaro Sports Leather#
Moondust Silver	Mondus Performance Blue	Recaro Sports Leather#
Sea Grey	Mondus Performance Blue	Recaro Sports Leather#
Performance Blue	Mondus Performance Blue	Recaro Sports Leather#
Performance Blue with White stripes*	Mondus Performance Blue	Recaro Sports Leather#
Colorado Red	Mondus Red	Recaro Sports Leather#
Colorado Red with White stripes*	Mondus Red	Recaro Sports Leather#
Frozen White	Mondus Performance Blue	Recaro Sports Leather#
Frozen White with Blue stripes*	Mondus Performance Blue	Recaro Sports Leather#

*Overhead stripes are optional and dictated by exterior colour selected. Only combinations represented in this brochure are available. #Seating capacity reduced to four when optional Recaro Sports Leather seats are specified.

Mondus Performance Blue
Dark Flint

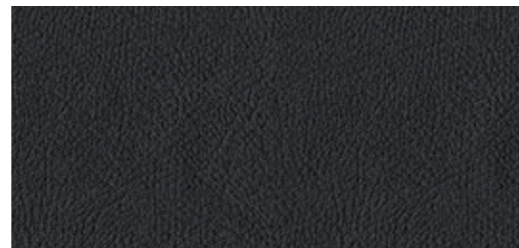
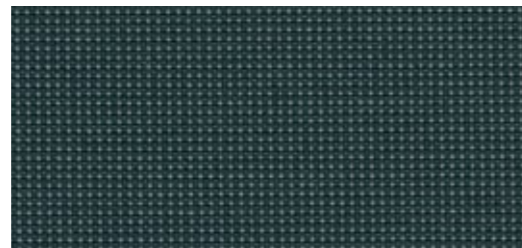
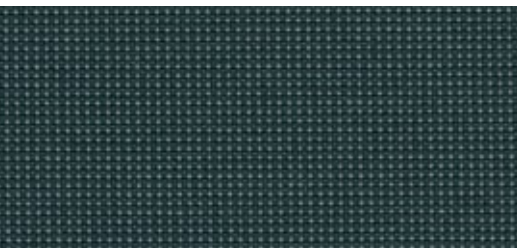
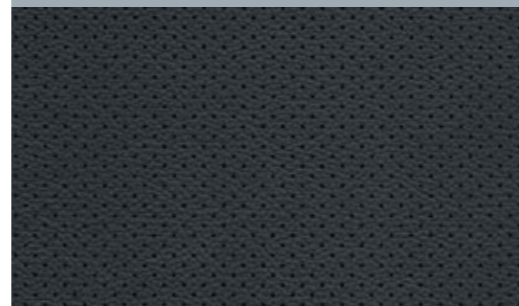


Mondus Red
Dark Flint



Optional.

Recaro Sports Leather#
Ebony Sports Leather





Lower front grille insert.

Personalise the front appearance with this stylish grille.

Personalise your Focus. The choice is yours.

The Ford Vehicle Personalisation accessory range lets you personalise your Focus to perfectly suit your needs.

Accessories

Exterior styling	CL	LX	Zetec	TDCi	XR5 Turbo
17" 5 spoke alloy wheels ¹	A	A	–	A	–
Alloy wheel lock nut set	A	A	A	A	S
Mullins – Motivatr 15" alloy wheels ^{1,2,3}	A	–	–	–	–
Mullins – Motivatr 16" alloy wheels ^{1,2,3}	A	A	–	A	–
Mullins – Motivatr 17" alloy wheels ^{1,2,3}	–	A	A	A	–
Mullins – Motivatr 18" alloy wheels ^{1,2,3}	–	–	–	–	A
Mullins – NOS 15" alloy wheels ^{1,2,3}	A	–	–	–	–
Mullins – NOS 16" alloy wheels ^{1,2,3}	A	A	–	A	–
CSA – alloy wheels ^{1,2,3} . For more information on these products visit us at www.ford.com.au	A	A	A	A	A
Sedan spoiler ⁴	A	A	–	–	–
Lower front grille insert	A	A	A	A	–
Chrome Exhaust Extension – Downward facing exhaust	A	A	A	A	A
Chrome Mirror Covers	A	A	A	A	A
Exterior protection					
Bonnet protector	A	A	A	A	A
Mudspats ⁵	A	A	–	A	–
Weathershields – bubble ⁶	A	A	A	A	A
Weathershields – slimline ⁷	A	A	A	A	A
Rear bumper protector (hatch)	A	A	A	A	A
Interior styling					
Alloy sports pedals	A	A	A	A	S
Alloy handbrake cover	A	A	A	A	S
Scuff plates	A	A	A	A	S
Interior comforts and storage					
Boot scuff guard	A	A	A	A	A
Cargo swing net	A	A	A	A	A
Anti-slip luggage compartment mat	A	A	A	A	–
Premium velour carpet mats ⁸	A	A	A	A	A
Standard carpet mats (set of 4)	A	A	A	A	A
Rubber mats ⁵	A	A	A	A	A

Interior comforts and storage (continued)	CL	LX	Zetec	TDCi	XR5 Turbo
Dashmat	A	A	A	A	–
Personal organiser	A	A	A	A	A
Smoker's pack	A	A	A	A	A
Window shades	A	A	A	A	A
Umbrella storage	A	A	A	A	A
In car electrical and entertainment					
Child activity organiser	A	A	A	A	–
Bluetooth® phone kit ⁸	A	S	S	S	S
iPod integration ⁹	–	A	A	A	–
Auxiliary audio plug in cable	A	A	A	A	A
Garmin Nüvi portable satellite navigation systems ²	A	A	A	A	A
Garmin Nüvi portable satellite navigation system accessories ²	A	A	A	A	A
Towing and carrying					
Carry bars	A	A	A	A	A
Bike carrier ¹⁰	A	A	A	A	A
Ski carrier ¹⁰	A	A	A	A	A
Ski/snowboard carrier ¹⁰	A	A	A	A	A
Rhino–Rack multi fit carry bars ²	A	A	A	A	A
Rhino–Rack luggage carrier – small/medium ²	A	A	A	A	A
Rhino–Rack roof top bike carrier ²	A	A	A	A	A
Rhino–Rack locking ski & snowboard carriers – 2pr/4pr/6pr ²	A	A	A	A	A
Rhino–Rack fishing rod carrier ²	A	A	A	A	A
Rhino–Rack universal holder ²	A	A	A	A	A
Rhino–Rack kayak/canoe carriers ²	A	A	A	A	A
Towpack ¹¹	A	A	A	A	–
Safety					
Go-Technologies reversing camera ²	A	A	A	A	A

S = Standard. A = Accessory that can be added at any time.



Cargo swing net.

Helps to keep your belongings and loose items in place during transit.



Scuff plates.

Add a finishing touch with brushed aluminium scuff plates.



Bike carrier.

Made from premium alloy for superior strength and stability.¹⁰



17" 5 spoke alloy wheel.

Designed in Europe, these wheels give your Focus a sportier edge.¹



Alloy sports pedals.

Adds extra flair to your Focus interior.



iPod integration.

This cable integrates your iPod[®] with the Focus LX, TDCi and Zetec audio system.

1. Wheels and tyres sold separately. 2. This accessory is a Supplier Branded Accessory and is not manufactured or warranted by Ford. The warranty is provided by the manufacturer of the accessory. 3. It is recommended that tyres matching original equipment specification be fitted to Mullins/CSA alloy wheels. 4. Available on sedan models only. 5. Front and rear sets sold separately. 6. Left and right sides sold separately. 7. Set of two front and set of two rear sold separately. 8. Bluetooth® is a registered trademark of Bluetooth SIG Inc., and is used under licence. 9. iPod is a trademark of Apple Inc. 10. Attaches to Genuine Ford carry bars (sold separately). 11. Subject to State and Territory regulations.

Mechanical specifications. For full specifications and options visit www.ford.com.au

	CL/LX/Zetec	TDCi	XR5 Turbo
Engine	2.0 Litre Duratec 4 cylinder 16V	2.0 Litre Duratorq 4 cylinder 16V Turbo Diesel	2.5 Litre Duratec 5 cylinder 20V Turbo
Max power output ISO ¹	107kW @ 6000rpm	100kW @ 4000rpm	166kW @ 6000rpm
Max torque ISO ¹	185Nm @ 4500rpm	320Nm @ 2000rpm	320Nm @ 1600 to 4000rpm
Valve gear type	DOHC	DOHC	DOHC
Fuel system	Sequential EFI	Diesel direct injection	Sequential EFI

Fuel	CL/LX Manual	Zetec Manual	CL/LX/ Zetec auto	Manual	Auto	Manual (only)
Fuel tank capacity (L)	55	55	55	53	53	55
Fuel consumption – ADR 81/02 (L/100km – rounded) ²	7.1	7.3	8.2	5.6	5.9	9.3
CO ₂ emissions (g/km) ²	169	174	194	147	157	224
Recommended fuel	ULP or PULP			Diesel		PULP
Ford Easy Fuel ^{®3}	–			–		S

Suspension	All models
Front	Independent MacPherson struts with anti-roll bar
Rear	Control Blade Independent Rear Suspension with anti-roll bar

Towing Capacities (kg) Subject to State and Territory regulations	CL/LX/Zetec	TDCi	XR5 Turbo
Maximum (braked/unbraked trailer) - manual transmission	900 / 650	1000 / 680	–
Maximum (braked/unbraked trailer) - automatic transmission	750 / 650	1000 / 680	–

Luggage Capacity	CL/LX – Sedan	CL/LX/Zetec – Hatch	TDCi	XR5 Turbo
Seats upright (volume, litres)	510	385	385	362

Interior Dimensions (mm)	CL/LX – Sedan	CL/LX/Zetec – Hatch	TDCi	XR5 Turbo
Front headroom	998	998	998	999
Front legroom	1058	1058	1058	1108
Rear legroom	908	908	908	853

Exterior Dimensions (mm)	CL/LX – Sedan	CL/LX/Zetec – Hatch	TDCi	XR5 Turbo
Overall length	4481	4337	4337	4357
Overall width (including exterior mirrors)	2020	2020	2020	2020
Overall height	1497	1497	1497	1497
Wheelbase	2640	2640	2640	2640

Specifications and options

Transmission	CL	LX	Zetec	TDCi	XR5 Turbo
Manual, 5-speed	S	S	S	–	–
Manual, 6-speed	–	–	–	S	–
Manual, close-ratio 6-speed	–	–	–	–	S
Automatic with 4-speed Sequential Sports Shift	O	O	O	–	–
PowerShift automatic with 6-speed Sequential Sports Shift	–	–	–	O	–

Ride & handling	CL	LX	Zetec	TDCi	XR5 Turbo
Front (ventilated) and rear (solid) disc brakes	S	S	S	S	S
Electro-hydraulic power steering	S	S	S	S	S
Adjustable sports steering	–	–	–	–	S
Control Blade Independent Rear Suspension	S	S	S	S	S
Sports suspension	–	–	S	–	S

1. All performance data for petrol models measured using 95RON fuel. 2. Figures obtained from controlled tests using ADR 81/02. Actual fuel consumption will depend on many factors including driving habits, prevailing conditions and your vehicle's equipment, condition and use. 3. Capless refueling with mis-fuel inhibitor. 4. If the spare wheel rim or tyre size differs from the other wheels fitted the vehicle should be driven with caution and the standard wheel and tyre should be fitted as soon as possible.

Specifications and options (continued)

Riding & handling (continued)	CL	LX	Zetec	TDCi	XR5 Turbo
15" Steel wheels with full cover - 195/65 R 15V tyres (set of 4)	S	-	-	-	-
16" Alloy wheels (5 spoke) - 205/55 R 16V tyres (set of 4)	-	S	-	S	-
17" Alloy wheels (5 spoke split) - 205/50 R 17W tyres (set of 4)	-	-	S	-	-
18" Alloy wheels (5 Y-spoke) - 225/40 R 18 tyres (set of 4)	-	-	-	-	S
Space saver temporary steel spare wheel and tyre ⁴	S	S	S	S	S
Locking wheel nuts	A	A	A	A	S
Interior					
Air-conditioning	S	S	S	S	S
Pollen filter	-	-	-	-	S
Two front cupholders	S	-	-	-	-
Centre console with two front cupholders and moveable armrest	-	S	S	S	S
Front windscreen wipers with variable intermittent feature	S	S	S	S	S
Driver and front passenger vanity mirror (with cover)	S	S	S	S	S
Front map lamps	-	-	-	-	S
Submarine lighting	-	-	-	-	S
Keyless start system with 'Ford Power' starter button	-	-	-	-	S
Leather sports gear knob (manual only)	-	-	-	-	S
Alloy sports pedals and handbrake cover	A	A	A	A	S
Power remote adjustable body colour external mirrors with turn lamps	S	S	S	S	S
Power front windows with driver one-touch down	S	-	-	-	-
Power front and rear windows with one-touch up/down and anti-trap feature	-	S	S	S	S
Luggage compartment illumination	S	S	S	S	S
Keyless entry with remote control (2 keys for XR5 Turbo)	S	S	S	S	S
Cruise control with leather wrapped steering wheel	-	S	S	S	-
3-spoke leather wrapped sports steering wheel with aluminium finish	-	-	-	-	S
Seating					
Cloth trim	S	S	S	S	S
Leather trimmed seats	-	-	O	-	-
Recaro sports bucket driver seat (8-way adjustable)	-	-	-	-	S
Recaro Sports Leather seats (10-way adjustable front seats with variable heating controls) ⁵	-	-	-	-	O

Seating (continued)	CL	LX	Zetec	TDCi	XR5 Turbo
Contoured and folding 60/40 split rear seats with flip fold cushion	S	S	S	S	S
Driver's seat adjustable lumbar support	-	-	-	-	S
Audio					
Single slot CD with AM/FM radio	S	S	S	S	-
Bluetooth® hands-free with Voice Control system ⁶	-	S	S	S	S
Sony premium sound system (8 speakers with MP3 compatible 6-disc in-dash CD and AM/FM radio)	-	-	-	-	S
3.5mm auxiliary audio input facility for iPod/MP3/CD or tape player ⁷	S	S	S	S	S
USB input facility for music files and iPod/MP3 player integration ⁷	-	S	S	S	-
Remote audio controls mounted on steering column	-	S	S	S	S
Exterior					
Sedan (4 doors)	S	S	-	-	-
Hatch (5 doors)	S	S	S	S	S
Power sunroof with tilt/slide functionality ⁸	-	-	-	-	O
Twin tail pipe exhaust	-	-	-	-	S
Body styling kit	-	-	S	-	S
Front fog lamps	-	S	S	S	S
Rear spoiler (hatch only)	S	S	S	S	S
Tinted glass	S	S	S	S	S
Safety					
Intelligent Safety System includes:					
Driver and front passenger airbags	S	S	S	S	S
Side front airbags	S	S	S	S	S
Side curtain airbags	S	S	S	S	S
Pyrotechnic seatbelt buckle pretensioners (front only)	S	S	S	S	S
Beltminder system	S	S	S	S	S
Advanced Restraints Module	S	S	S	S	S
Crash severity sensors	S	S	S	S	S
Anti-lock Braking System (ABS) with Electronic Brakeforce Distribution (EBD)	S	S	S	S	S
Dynamic Stability Control (DSC) with Traction Control and Emergency Brake Assist (EBA)	S	S	S	S	S
Premium alarm with interior motion scanner	-	-	-	-	S

S = Standard. O = Options that can be ordered before a vehicle is manufactured. P = Part of optional pack.

⁵ Seating capacity reduced to four when optional Recaro Sports Leather seats are specified. ⁶ Bluetooth® is a registered trademark of Bluetooth SIG Inc., and is used under licence. ⁷ Connection cable sold separately. iPod is a trademark of Apple Inc. ⁸ Optional overhead stripes not available with sunroof option.

Making your ownership experience even more rewarding.

A great car is just the beginning. We support you with a wide range of services that aim to make you one of the most satisfied vehicle owners in Australia.



Focus LX sedan shown in Thunder.

Speak to your Ford Dealer today about how we can help you make the most out of your vehicle ownership experience.

3 year/100,000km new car warranty.*

For three years or 100,000km, whichever comes first, your Ford is covered against any defects in factory materials or workmanship. This also applies to Genuine Ford Accessories you may have had fitted by your Ford Dealer before you took delivery.

5 year warranty against perforation corrosion.*

It's reassuring to know that the original body of your gleaming new Ford is guaranteed against perforation corrosion for the first five years of its life. If perforation corrosion occurs, we'll fix it for free.

myFord Warranties & Insurance.

When you first turn the key of your brand new Focus you want to do so without a care in the world. Our range of myFord products gives you that extra peace of mind. For more information about myFord Warranties and Insurance, visit your participating Ford Dealer for further details on the plans that best suit your needs. Terms, conditions and eligibility criteria apply.

Want to contact us?

For answers to your questions, or help with any concern, contact our Customer Relationship Centre on 13 FORD (13 3673).

Running a fleet?

Our Ford Business Centre is available to assist fleet customers with information on Ford products and services. Call 1300 13 13 30.

Visit us on the web.

If you want more information on Ford or our entire product range, visit us on the Internet at ford.com.au.

*Conditions and exclusions apply. See your authorised Ford Dealer for details.

This brochure details specifications and features of the LV Focus Mk II model, with the exception of the XR5 turbo model which retains the original LV specifications. Consult your Ford Dealer for the most current specifications.

This brochure is designed to provide you with a general introduction to the Ford Products (including available optional equipment) referred to, and should be read in conjunction with the latest specification sheet. Because of changes in conditions and circumstances Ford* reserves the right, subject to all applicable laws, at any time, at its discretion, and without notice, to discontinue or change the features, designs, materials, colours and other specifications and the prices of their products, and to either permanently or temporarily withdraw any such products from the market without incurring any liability to any prospective purchaser or purchasers. The latest specification sheet should be referred to for information on the availability, ordering and use of optional equipment. Always consult an authorised Ford Dealer for the latest information with respect to features, specifications, prices, optional equipment and availability before deciding to place an order. *FORD MOTOR COMPANY OF AUSTRALIA LIMITED, (A.B.N. 30 004 116 223) Registered Office: 1735 Sydney Road, Campbellfield, Victoria 3061, Australia. Printed February, 2011. FOCUS0008



Click to Request



Quote



Hot Deals



Test Drive



ford.com.au