

TERRITORY



Feel the difference

The amazing Territory

With striking exterior features, stylish interior environments, an ANCAP 5 star safety rating and sedan-like handling, the Territory continues to be truly amazing.



Territory Ghia AWD shown in Edge with optional Genuine Ford carry bars.

The family weekend camping expedition, weekly soccer practice, a 10th birthday party, a day trip to the beach, the list goes on. Your typical Australian family packs more into every week than ever before. That's why the Ford Territory, designed and built in Australia, endlessly adapts to your lifestyle.

Endless possibilities

With generous amounts of space, and flexible seating arrangements, the Territory is perfect for your next adventure.



Territory TS AWD shown in Lightning Strike.

The Territory allows you to experience the freedom of an SUV, the driving dynamics and superior handling of a sedan and the practicality of a people mover; all in the one car. It's easy to see how the Territory complements an active family lifestyle.

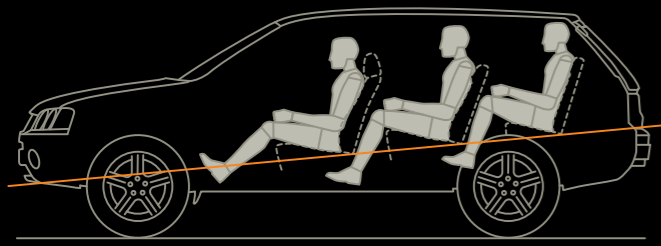
A thoughtful interior design

A clever interior designed for both pleasure and usability highlights the amazing mix of functionality and innovation.



Territory TS RWD shown with Essence cloth trim seats with Miller suede bolsters in Cashmere.

The beauty of the Territory is that no matter whether it's a trip to the supermarket or you're making the trek up to the mountains for a family ski weekend, you can relax in an interior designed to change with your journey. The designers have carefully considered everyone's comfort and needs. Behind the wheel, the eye-catching instrument panel and cockpit gives you a really solid feeling of confidence when driving, while the seat materials, colour finishes and trim highlights, emphasise the attention to detail that has gone into every aspect of the interior environments.



Theatre seating.

Just because the kids want their friends to come along doesn't mean you need to take two cars. Territory's 3rd row seating,* which allows you to seat up to 7 adults comfortably, means there's plenty of space for everyone and with each seating row raised, everybody enjoys greater visibility.

An amazingly flexible interior

The Territory interior endlessly adapts to your lifestyle and needs, from travelling comfort and storage to on-board entertainment.



Territory Ghia AWD shown with Nudo print leather seat inserts in Shadow.

Surfboards? Check. Wetsuits, towels, buckets and spades? Check. "Can I bring a friend?" Check. In most cars a straightforward trip to the beach can become pretty complicated. The Territory, however, handles everything with amazing ease. For starters, there's enough room for everyone thanks to Territory's 3rd row seating,* which allows you to seat up to 7 adults comfortably.

*3rd row seat optional on Territory TX.

The split rear-lift gate glass allows two way rear access making it easy when you're loading gear in and out. To make every journey more comfortable is the easy-to-reach audio and climate controls and integrated entertainment system, while the Alpine rear DVD system on Territory Ghia means you can enjoy Hollywood on the highway.

Flexible seating

With so many seating arrangements possible, the Territory's interior endlessly adapts to your changing needs.



Territory Ghia AWD shown with Nudo print leather seat inserts in Cashmere.



With the third row seat* folded down, there's still more than enough storage space for a family on holiday.



The 60/40 split fold second row seating gives you the flexibility to accommodate passengers and cargo.



Second and third row seats* fold flat to create a huge cargo area.

Territory's generous boot space and flexible seating arrangements are designed to suit your needs, whatever they may be. With the third row seat* folded down, there's more than enough boot space for all your gear. The 60/40 split fold second row seating gives you the flexibility to accommodate both passengers and cargo and should you need the extra storage space, the 2nd and 3rd row seats fold completely flat providing you with a huge storage area.

Not only does the Territory allow you to carry lots of people and cargo, it is also perfect for little ones with the capacity to fit 3 child seats across the 2nd row seat and if you need it, there are 5 child anchor points in the vehicle.*

*3rd row seat optional on Territory TX.



Handbag compartment.

Side compartments in the driver and front passenger seats provide a convenient, secure way of storing a handbag.



Lockable security drawer.

Situated under the driver's seat, the benefit of the lockable compartment to help protect valuables cannot be underestimated.

Loads of clever storage solutions

Territory's list of storage compartments seems positively endless and provides a logical place for everything in your life.



Territory Ghia AWD shown with optional Bluetooth® mobile phone kit.



Alpine rear DVD system.*

Standard on Territory Ghia, it's a great way to keep the kids entertained on long journeys. Includes remote control.



Automatic Climate Control.

Automatic climate control with dual zone temperature control* is within easy reach, which means you'll get to your destination in amazing comfort.



Removable rear rubbish bin.

Easily accessible to front and second row passengers, the removable bin is dishwasher safe.



Armrest bin and cup holder.

Each passenger in the 3rd row seat† is catered for with an armrest bin and cup holder.

You'll find there are a minimum of 30 storage compartments in all, including 10 drink holders, a dishwasher-safe rubbish bin, and useful innovations such as a lockable compartment under the driver's seat to help protect valuables. In the rear you'll find a handy wet/dry compartment* that can protect other luggage from muddy sporting gear or a damp wetsuit. Territory's very handy storage compartments make life just that little bit easier.

*Includes a 10.2" screen, 2 wireless headphones and remote control. Accessory iPod/MP3 audio input not available when Alpine rear DVD system fitted. †Not available on Territory TX. ‡Bluetooth® is a registered trademark of Bluetooth SIG, Inc. and is used under licence. *Standard on Territory TX and standard on TS & Ghia when 5seat configuration is chosen. ‡3rd row seat optional on Territory TX

Travel in safer territory

With Australia's highest safety rating, Territory's long list of safety features are looking after you and your family.



Territory Ghia AWD shown in Edge.

Anti-lock Braking System (ABS).

Anti-lock Braking System (ABS) with Electronic Brakeforce Distribution (EBD) helps prevent the brakes from locking under heavy braking pressure, thereby increasing the amount of steering control in an emergency braking situation.

Intelligent Safety System.

In the event of an accident occurring, information is fed to the Advanced Restraints Module, which instantly deploys the appropriate safety technologies.

Beltminder system.

A warning alarm sounds when the vehicle is in motion but the driver and front passenger seat belts are not in use.

Airbags.

A range of airbags, including dual stage driver and front passenger and side curtain* are designed to enhance your protection in the event of a crash.

Reverse sensing system.™

Automatically activates and provides a warning tone to assist the driver to reverse with greater accuracy.



Dynamic Stability Control.

Dynamic Stability Control (DSC) strengthens your connection to the road and helps you avoid the problems of oversteer and understeer. DSC tracks the vehicle's movement and then works in tandem with Traction Control and ABS to help keep the vehicle under control.



Reverse camera.

In the Territory, safety starts before you even leave your driveway with a reverse camera[^] that provides visibility for things you can't see. The camera activates automatically when the car is engaged in reverse gear and features a fisheye lens capable of providing a 130° wide angle view up to 10 metres behind the vehicle.



Passenger safety cell.

Incorporating high strength steel for greater all round strength and protection, the safety cell greatly reduces intrusion into the passenger space, minimising the likelihood of occupant injuries.

Whether you happen to be navigating the city traffic on your way to the kid's sports practice or heading down the highway for a weekend escape, Territory's legion of safety features and its ANCAP 5 star safety rating makes every journey a safer one. It starts with a command driving position that gives you a clear view of your surroundings, and is complemented with ergonomic features that minimise the time that your eyes are off the road, helping you avoid an accident.

At the heart of Territory's protection is the computer controlled Intelligent Safety System which, in an emergency, co-ordinates a response to enhance your protection. The system employs sensors which monitor the driver's seating position, seat belt

status and crash severity. Should an accident occur, information is fed to the Advanced Restraints Module which instantly deploys safety technologies accordingly. Dual stage driver and front passenger airbags and side curtain airbags* activate as needed, front seat belt pretensioners reduce any slack and energy management seat belt retractors limit the amount of force on the occupant. Add to this a reinforced passenger safety cell, front crumple zones, ABS, collapsible steering column and an anti-intrusion brake pedal.

All in all, Territory's innovative safety features give you and your family amazing peace of mind.



Power adjustable pedals.#

Adjust to the desired height for added driver comfort and safety. Decouples in a collision to help prevent leg injuries.

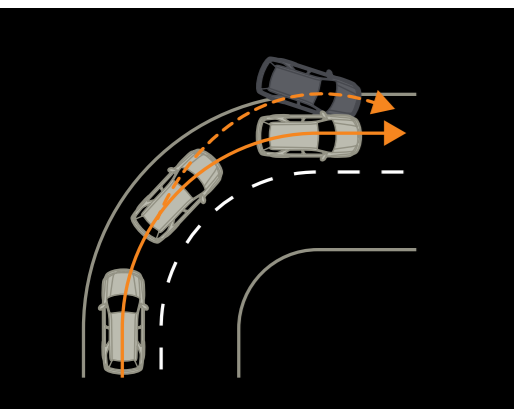
[^]Standard on Territory TS and Ghia. ^{*}For front and 2nd row passengers. [™]Standard on Territory TS and Ghia. Available as an accessory on TX. [#]Standard on Territory Ghia.

Experience amazing control

Territory is designed, engineered and built in Australia specifically for Australian driving conditions so you have the freedom to take on any adventure you choose.

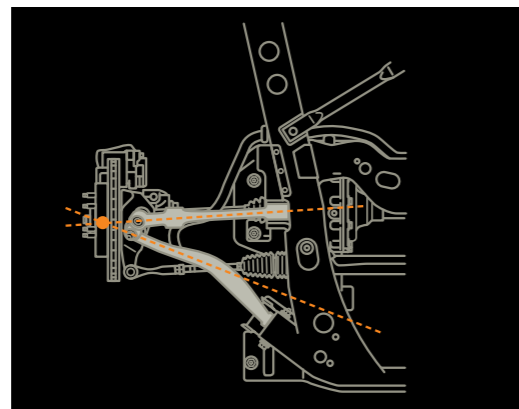


Territory TS AWD shown in Seduce.



Dynamic Stability Control.

Dynamic Stability Control (DSC) strengthens your connection to the road and helps you avoid the problems of oversteer and understeer. DSC tracks the vehicle's movement and then works in tandem with Traction Control and ABS to help keep the vehicle under control.



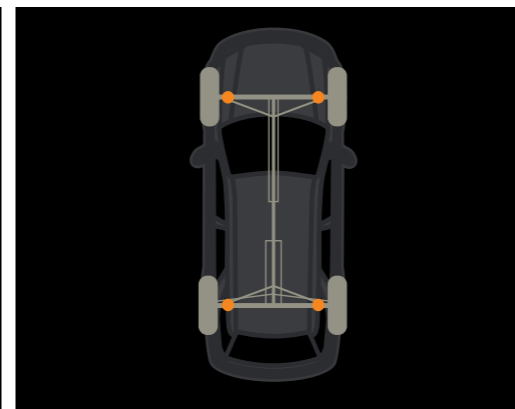
Virtual Pivot Control Link.

The feeling of precise control and agility you'll experience in the Territory comes from the technically advanced Virtual Pivot Control Link front suspension. It provides Territory with a 'no compromise' suspension offering great steering and control combined with excellent levels of comfort.



Traction Control.

Minimise wheel slip by a combination of engine intervention and brake application. Monitors wheel slip and applies the optimum level of torque and/or brake. Works in conjunction with DSC and ABS to strengthen your connection to the road.



All-Wheel-Drive.

With the option of AWD, which is in AWD mode full time, torque is continually delivered to all four wheels for all-road confidence providing the ability to get off the beaten track and enjoy more challenging journeys, not to mention having increased traction in slippery conditions and more precise cornering.

Life's an adventure and when you travel in a Territory, the sedan-like feel and precise handling in all conditions means you can tackle more adventures than ever, whether it happens to be taking on a muddy track, climbing a snow covered road or simply navigating the concrete jungle.

You have the choice of Rear-Wheel-Drive with its outstanding performance on the open road, or optional full time All-Wheel-Drive so you can take on more challenging terrain. There's a range of standard cutting-edge technology at work in the Territory, such as Grade Control Logic to assist with braking and speed control when you're descending steep roads, Control Blade Independent Rear Suspension, ABS with Electronic Brakeforce Distribution and Dynamic Stability Control with Traction Control to minimise wheel slip.



Amazing towing capacity.

Territory delivers the power to move big loads with a towing capacity up to 2300kg*

Amazing power and performance

Territory's powerful engine delivers all the power and performance you need.



Territory Ghia AWD shown in Mystic with optional Genuine Ford heavy duty 2,300kg towpack.



Amazing engine.

Designed, engineered and built in Australia, the I6 4.0L DOHC DI-VCT engine produces 190kW of power and an impressive 383Nm of torque providing the performance to do what you want.



Amazing transmissions.

The German engineered ZF six speed automatic transmission with Sequential Sports Shift refines Territory's sedan-like feel to an amazing level. Standard across the All-Wheel-Drive range, this transmission enables smoother, slicker acceleration with the luxury of seamless gear changes.

Towing the boat for a weekend of fishing? Easy. Need the confidence to overtake with ease on the highway? No drama. That's the beauty of Territory — its athletic stance is backed up by truly impressive performance. Of course power is only one aspect of performance. Once you're behind the wheel, you quickly discover Territory's precise handling makes for a driving experience you're more likely to associate with a sedan, not a vehicle that can seat up to seven people. And you can definitely count on Territory when it comes to towing, with the ability to pull loads up to 2300kg* So whether you're hooking up the caravan for school holidays or a trailer loaded with trail bikes, you'll find towing a breeze. Adding another level to the driving experience is the six speed Sequential Sports Shift automatic transmission on AWD models. It delivers smooth power to the engine and also gives you the choice to sit back and enjoy the drive, or to get more involved.

*2,300kg is the maximum towing capacity using a Genuine Ford heavy duty tow pack with load levelling kit. For RWD models, an auxiliary transmission oil cooler must be fitted. To comply with these limits, occupants and/or luggage may need to be restricted. For greater passenger and luggage requirements, please consult your authorised Ford Dealer for details and/or refer to the Territory owner manual under 'Towing Capacities' for further guidance. Subject to State and Territory regulations.

Territory TX

| A family car with amazing value. ■



Territory Ghia AWD shown in Seduce.



Airbags.

The Territory boasts a range of airbags, including side curtain airbags* which are designed to enhance your protection in the event of a crash.



Alloy wheels.

The sporty 5 spoke 17" alloy wheels* really add an eye-catching edge and complete the Territory TX's amazing value.

With your choice of AWD or RWD, the Territory TX includes standard body coloured bumpers, mirrors and door handles, cruise control and 17" alloy wheels.* Standard safety equipment includes Dynamic Stability Control, ABS with Electronic Brakeforce Distribution, driver and front passenger airbags, side curtain airbags* and driver and front passenger belt-minders.

*Set of four. *For 1st and 2nd row only.

Territory TS

| It's loaded with features. |



Territory Ghia

| Amazing levels of comfort and luxury. |



3rd row seat.

The versatile 3rd row seat allows you to comfortably seat 7 adults.



Reverse camera.

Safety starts before you even leave your driveway with a reverse camera that provides visibility for things you can't see.



Alpine rear DVD system.*

There's nothing quite like entertainment on the road to help make those longer journeys go faster. Standard on the Territory Ghia and can be played either through the premium audio system or via wireless headphones.



Side steps and LED side mirror turn indicators.

The strong, lightweight aluminium side steps and mirror turn indicators add both style and function to the Territory Ghia.

Territory TS has all the features of TX and then some, including a Premium Interior Command Centre with colour screen, dual zone automatic climate control, premium audio system with 6-disc in dash-CD player and reverse parking camera. It also includes a reverse sensing system, fog lamps and a 3rd row seat as standard.

When you want to head off the beaten track without compromising creature comforts, look no further than the Territory Ghia. It boasts all the credentials of the TS but also includes luxury features such as leather seat inserts, 6 way power driver seat with memory, power adjustable pedals, Alpine rear DVD system*, 18" alloy wheels, side steps, privacy glass# and LED side mirror turn indicators.

*Includes a 10.2" screen, 2 wireless headphones and remote control. Accessory iPod/MP3 audio input not available when Alpine rear DVD system fitted. #Set of four. #For rear passengers and back windows.

An amazing choice

With an expansive selection of models and accessories, Territory offers you amazing freedom of choice.



Territory (Available in RWD or AWD)



Territory TX

- Safety equipment (DSC, ABS with EBD, driver and front passenger airbags, side curtain airbags,* driver and front passenger belt minder) • Cruise control, power windows and mirrors • Body coloured bumpers, mirrors and door handles • 17" alloy wheels*



Territory TS

- Dual zone automatic climate control • Premium audio system with 6 disc in dash CD player • Fog lamps • 17" alloy wheels*
- Reverse sensing system and reverse parking camera • Leather wrapped steering wheel, handbrake and Sequential Sports Shifter
- 3rd row seat with 2nd row seat slide adjust



Territory Ghia

- Leather seat inserts • 6-way power driver seat with memory • Electrochromatic rear vision mirror • Power adjustable pedals
- Alpine rear DVD system • 18" alloy wheels* • Side steps • LED side mirror turn indicators

So what are you looking for in your Territory? You might need the extra seating so all the kids and their friends can enjoy the fun. Or maybe you'd prefer to tackle the high road in the height of luxury. And there are those whose needs mean they prefer Rear-Wheel-Drive to All-Wheel-Drive. Everybody's needs are different, but with such a wide choice of models and accessories, you'll find the amazing Territory range has a vehicle that'll suit you perfectly.

*For 1st and 2nd row seats only. ^Set of four.

Exterior colours



Winter White



Seduce



Harmony



Edge



Havana



Silhouette



Chill*



Lightning Strike



Sensation^



Mystic^

Exterior colour

Model	TX	TS	Ghia
Winter White	●	●	●
Lightning Strike	●	●	●
Edge	●	●	●
Havana	●	●	●
Seduce	—	●	●
Silhouette	●	●	●
Sensation^	●	●	●
Chill*	●	●	●
Mystic^	—	●	●
Harmony	●	●	●

● = Available

*Available from November, 2010. ^ Available until end of December, 2010.

Interior trims

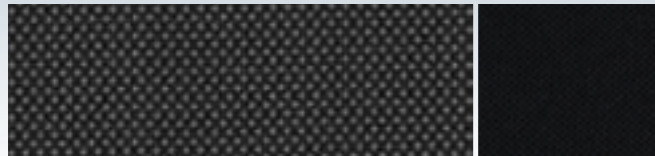
Tailor your Ford Territory to your individual needs

Get the most from your Ford Territory with a range of useful, convenient and well designed accessories.



Territory Ghia shown with optional Bluetooth®* mobile phone kit.

TX



Momentum Medium Shadow cloth trim seats with Jacob Shadow bolsters

TS



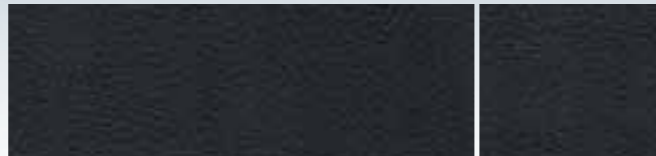
Essence Shadow cloth trim seats with Miller suede Shadow bolsters

TS No cost option



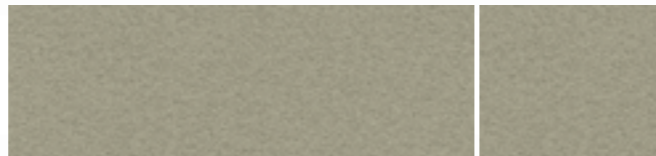
Essence Cashmere cloth trim seats with Miller suede Cashmere bolsters

Ghia



Nudo print leather seat inserts in Shadow

Ghia No cost option



Nudo print leather seat inserts in Cashmere



Territory TX AWD shown in Lightning Strike with optional Genuine Ford carry bars, canoe/kayak holder and side steps.

*Bluetooth® is a registered trademark of Bluetooth SIG, Inc. and is used under licence.

With a vehicle that gives you the freedom to go anywhere and do just about anything, it is little wonder the choice of Territory accessories seems endless. What's more, the Ford Vehicle Personalisation accessory range displays the same level of innovation and clever thinking that we put into the vehicle itself. So whether you're looking to entertain the family, enhance the sporty look of your Territory or add accessories to meet the needs of your active lifestyle, you'll find the Territory range has it covered.

Personalise your Territory. The choice is yours.

The Ford Vehicle Personalisation accessory range lets you personalise your Territory to perfectly suit your needs.



Bluetooth® mobile phone kit.*

Make and receive phone calls hands-free so you needn't take your eyes off the road.



iPod/MP3 Audio input.† Take your favourite tunes with you. Connect your iPod or MP3 player and play songs through the car's audio system.



Rex DVD Entertainment System.#1.

A great way to keep the kids entertained on long journeys. Includes two lightweight headphones.



Garmin Nuvi portable Satellite Navigation Systems.~1. The easy-to-read navigation systems give you clear directions.



Carry Bars.‡ Easy to fit and remove, lockable and made from strong, lightweight aluminium, with a maximum carrying capacity of 80kg.



Cargo swing net. Convenient storage solution that minimises the risk of items moving during transit. Easy to install and remove.



Intelligent Bar System.‡ Fully integrated with the vehicle's Intelligent Safety System and side curtain and dual stage front airbags.



Alloy scuff plate inserts. Set of four polished aluminium scuff plate inserts take refinement to another level.



Ski/snowboard carrier. Perfect for carrying skis, snowboards or wakeboards. Lockable and accommodates up to 5 pairs of skis.



Roof luggage box. Enjoy even more carrying capacity and flexibility. Fully lockable and can be opened from either side.



Carpet Mats. Enhance your vehicle's appearance with perfectly colour matched mats that help protect your vehicle's interior.



Side Steps. Made from strong, lightweight aluminium, the side steps provide easy access into the vehicle.

*Bluetooth® is a registered trademark of Bluetooth SIG, Inc. and is used under licence. †Not available on Ghia or when REX DVD Entertainment System is fitted. #Not available with iPod/MP3 audio input. ~Garmin Nuvi 1390T portable satellite navigation system shown. ‡Available in a black or silver finish. †Available in black or grey.

Accessories

Exterior styling	TX	TS	Ghia
Spoiler	A	A	A
Side steps	A	A	S
EGR Integrated Fender Flare with Silver Side Steps ¹	A	A	-
EGR Integrated Fender Flare with Black Side Steps ¹	A	A	-
Alloy wheel lock nut set	A	A	A
Exterior protection			
Bonnet protector - Clear, Chrome or Tinted	A	A	A
Dust deflector	A	A	A
Fog lamp guards	A	A	A
Headlamp guards	A	A	A
Intelligent Bar System - Black	A	A	A
Intelligent Bar System - Grey	A	A	A
Licence plate covers	A	A	A
Lights on feature	A	A	A
Mudspats - front /rear	A	A	A
Sump guard	A	A	A
Weathershields - Bubble - left/right	A	A	A
Weathershields - Bubble - Rear	A	A	A
Weathershields - Slimline - front/rear ²	A	A	A
Interior comforts and storage			
Cargo liner, cargo retention net, cargo organiser or cargo hammock net ⁴	A	A	A
Cargo swing net	A	A	A
Carpet mats - Cashmere (set of three)	A	A	A
Carpet mats - Shadow (set of three)	A	A	A
Dashmat	A	A	A
Load area cargo shelf	A	A	A ⁵
Personal organiser	A	A	A
DVD / CD Wallet	A	A	A
Child activity organiser	A	A	A
Pollen Filter	A	A	A
Rubber floor mats - (set of four)	A	A	A
Smoker's pack	A	A	A
Waterproof seat covers - Front ⁶	A	A	A
Waterproof seat covers - Rear ⁷	A	A	A
Window shades - set of two or set of three	A	A	A
Safety and security			
Alarm	A	A	A
Fire extinguisher 1kg	A	A	A
First aid kit	A	A	A
Reverse sensing system	A	S	S
Cargo barrier ⁴	A	A	A
Safety triangle	A	A	A
Interior styling			
Leather sports steering wheel	A	-	-
Leather Sequential Sports Shifter ³	A	-	-
Scuff plate inserts - alloy or sports	A	A	A
In car electrical entertainment			
Auxillary audio plug in	A	A	A
Bluetooth [®] mobile phone kit ⁸	A	A	A
iPod/MP3 audio input ⁹	A	A	-

In car electrical entertainment (continued)	TX	TS	Ghia
Mobile phone presenter	A	A	A
Fridge Day Tripper 15L	A	A	A
Fridge 31L	A	A	A
Fridge 49 Litre Kit	A	A	A
Fridge Bag - 49L	A	A	A
Fridge power adaptor	A	A	A
Console Insul-Bag	A	A	A
Garmin Nuvi 500 portable satellite navigation system ¹	A	A	A
Garmin Nuvi 1250 portable satellite navigation system ¹	A	A	A
Garmin Nuvi 1260 portable satellite navigation system ¹	A	A	A
Garmin Nuvi 1350 portable satellite navigation system ¹	A	A	A
Garmin Nuvi 1390T portable satellite navigation system ¹	A	A	A
Garmin Nuvi 1450T portable satellite navigation system ¹	A	A	A
Garmin Nuvi 1490T portable satellite navigation system ¹	A	A	A
Garmin Nuvi 1690 portable satellite navigation system ¹	A	A	A
Garmin Nuvi 3760 portable satellite navigation system ¹	A	A	A
Garmin Nuvi 3790T portable satellite navigation system ¹	A	A	A
Garmin Traffic Receiver ¹	A	A	A
Go Technologies rear camera bumper mount ¹	A	-	-
Go Technologies rear camera wireless adaptor ¹	A	-	-
REX DVD Entertainment System ^{1,10}	A	A	-
REX Games Adaptor and Games Bag ¹	A	A	-
Futuris Single DVD player ¹	A	A	-
Futuris Double DVD player ¹	A	A	-
Towing and carrying			
Carry bars	A	A	A
Bike carrier or canoe/kayak holder or ski/snowboard carrier ¹¹	A	A	A
Roof luggage basket ¹¹	A	A	A
Roof luggage cover - soft ¹¹	A	A	A
Roof luggage box - 375L ¹¹	A	A	A
Rhino-Rack Sportz carry bars ¹	A	A	A
Rhino-Rack alloy tray luggage carrier ^{1,12}	A	A	A
Rhino-Rack luggage carrier - small or medium ^{1,12}	A	A	A
Rhino-Rack roof top bike carrier ^{1,12}	A	A	A
Rhino-Rack locking ski & snowboard carriers - 2pr, 4pr or 6pr ^{1,12}	A	A	A
Rhino-Rack fishing rod carrier ^{1,12}	A	A	A
Rhino-Rack universal holder ^{1,12}	A	A	A
Rhino-Rack S400 kayak/canoe carrier ^{1,12}	A	A	A
Rhino-Rack Explorer series kayak carrier ^{1,12}	A	A	A
Rhino-Rack RX or RXX carrier ^{1,12}	A	A	A
Towpack - standard 1,600kg (inc towbar, towball and wiring) ¹³	A/O	A/O	A/O
Towpack - heavy duty 2,300kg (inc towbar, towball, wiring and load levelling kit) ¹⁴	A	A	A

S = Standard. O = Factory Option that can be ordered before a vehicle is manufactured. A = Accessory that can be added at any time. -- = Not Available.

1. This accessory is a Supplier Branded Accessory and is not manufactured or warranted by Ford. The warranty is provided by the manufacturer of the accessory. Contact your authorised Ford Dealer for details of the accessory manufacturer's warranty applicable to this accessory. 2. Left and right front weathershields sold separately, each as a set of two. 3. Available for 4-speed RWD models only. 4. Not compatible with 3rd row seat. 5. Standard on 5 seater model. Available as a Genuine Ford Accessory on 7 seater model. 6. Driver's and passenger's waterproof seat covers are sold separately. 7. Not available for 3rd row seat. 8. Bluetooth[®] is a registered trademark of Bluetooth SIG Inc., and is used under licence. Customers should consult their Ford Dealer on the ability of their mobile phone handset to integrate with the Bluetooth[®] system prior to making a purchase decision. 9. Not available on Ghia or when REX DVD Entertainment System is fitted. iPod or MP3 player not included. iPod is a trademark of Apple Computers Inc. Please refer to www.ford.com.au for iPod compatibility. 10. Not available with iPod/MP3 audio input. 11. Attaches to Genuine Ford carry bars (sold separately). 12. Attaches to Rhino-Rack Sportz carry bars (sold separately). 13. 1,600kg is the maximum towing capacity using a Genuine Ford tow pack. To comply with these limits, occupants and/or luggage may need to be restricted. For greater passenger and luggage requirements, please consult your authorised Ford Dealer for details and/or refer to the Territory owner manual under 'Towing Capacities' for further guidance. Subject to State and Territory regulations. 14. 2,300kg is the maximum towing capacity using a Genuine Ford heavy duty tow pack with load levelling kit. For RWD models, an auxiliary transmission oil cooler must be fitted. To comply with these limits, occupants and/or luggage may need to be restricted. For greater passenger and luggage requirements, please consult your authorised Ford Dealer for details and/or refer to the Territory owner manual under 'Towing Capacities' for further guidance. Subject to State and Territory regulations.

Mechanical specifications

Engine		Territory TX, TS & GHIA	
Engine type	4.0L DOHC DIVCT I6		
Engine size (cc)	3984		
Compression ratio	10.3:1		
Max. power (DIN)	190kW @ 5250rpm		
Max. torque (DIN)	383Nm @ 2500rpm		
No. of valves	24		
Bore x stroke	92.26mm x 99.31mm		
Injection	Sequential multipoint electronic fuel injection		
Engine management	Powertrain control module incorporating electronic throttle control		
Suspension			
Front	Virtual Pivot Control Link front suspension		
Rear	Control Blade Independent Rear Suspension		
Transmission ratios		RWD	AWD
1st gear	2.5		4.171
2nd gear	1.49		2.34
3rd gear	1.00		1.521
4th gear	0.675		1.143
5th gear	-		0.867
6th gear	-		0.691
Reverse	2.073		3.403
Final drive ratio	3.73:1		3.46:1
Fuel		RWD	AWD
Fuel tank capacity (L)	75		75
Combined fuel consumption - ADR 81/02 (L/100km - rounded) ¹	TX	11.6 (with 5 seats), 12.0 (with 7 seat option)	
	TS	11.6 (with 5 seat option), 12.0 (with 7 seats)	
	Ghia	12.0 (with 5 or 7 seats)	12.5 (with 5 seat option), 12.9 (with 7 seats)
Recommended fuel	ULP		ULP
Brakes		RWD	AWD
Front	Vented disc brakes with twin piston caliper		
Rear	Vented rotor with single piston caliper		
Towing capacities (kg)			
Standard towpack	1600 ²		
Heavy duty towpack	2300 ³		
Maximum towball download - standard towpack 1600kg	160 ²		
Maximum towball download - heavy duty towpack 2300kg	230 ³		
Maximum towing capacity - unbraked trailer	750		
Maximum towing capacity - braked trailer	2300 ³		
Rear gross axle load rating when towing	1530		
Exterior dimensions (mm)		Territory TX, TS & GHIA	
Overall length	4856		
Overall width (excluding mirrors)	1898		
Overall height	1714		
Wheelbase	2842		
Front track	1626		
Exterior dimensions (mm) continued		Territory TX, TS & GHIA	
Rear track	1597		
Front overhang	926		
Rear overhang	1088		
Approach angle	23°		
Departure angle	19.8°		
Ground clearance	179		
Interior dimensions (mm)		Territory TX, TS & GHIA	
Front headroom	1074		
Front legroom	1122		
Front shoulder room	1548		
Front hiproom	1525		
2nd row legroom (5 seater)	1041		
2nd row headroom (5 seater)	1006		
3rd row legroom	853		
3rd row headroom	926		
Luggage capacity (L)			
5 Seater (behind 2nd row)	1153L		
Minimum turning circle (m)			
Diameter kerb-to-kerb	11.4		

S = Standard. O = Factory options that can be ordered before a vehicle is manufactured. A = Accessory that can be added at any time.

1. Figures obtained from controlled tests using ADR 81 / 02. Actual fuel consumption will depend on many factors including driving habits, prevailing conditions and your vehicle's equipment, condition and use. 2. 1,600kg is the maximum towing capacity using a Genuine Ford tow pack. To comply with these limits, occupants and/or luggage may need to be restricted. For greater passenger and luggage requirements, please consult your authorised Ford Dealer for details and/or refer to the Territory owner manual under 'Towing Capacities' for further guidance. Subject to State and Territory regulations. 3. 2,300kg is the maximum towing capacity using a Genuine Ford heavy duty tow pack with load levelling kit. For RWD models, an auxiliary transmission oil cooler must be fitted. To comply with these limits, occupants and/or luggage may need to be restricted. For greater passenger and luggage requirements, please consult your authorised Ford Dealer for details and/or refer to the Territory owner manual under 'Towing Capacities' for further guidance. Subject to State and Territory regulations.

Specifications and options

Engine & transmission	TX RWD	TX AWD	TS RWD	TS AWD	Ghia RWD	Ghia AWD
4.0L DOHC DI-VCT I6	S	S	S	S	S	S
4-Speed automatic transmission with Sequential Sports Shift (SSS)	S	-	S	-	S	-
ZF 6-speed automatic transmission with Sequential Sports Shift (SSS)	-	S	-	S	-	S
Kerb weight (kg)						
Kerb mass - 5 seater ⁴	1967	2054	1976	2058	2011	2093
Kerb mass - 7 seater ⁵	2003	2090	2012	2093	2046	2127
Ride and handling						
Virtual Pivot Control Link Front Suspension	S	S	S	S	S	S
Control Blade Independent Rear Suspension	S	S	S	S	S	S
17" x 7.5" 5 Spoke alloy wheels - P235/60 R17 tyres ⁶	S	S	-	-	-	-
17" x 7.5" 10 spoke alloy wheels - P235/60 R17 tyres ⁶	-	-	S	S	-	-
18" x 7.5" 10 spoke alloy wheels - P235/55 R18 tyres ⁶	-	-	-	-	S	S
17" Full size steel spare wheel	S	S	S	S	S	S
Exterior						
Prestige paint	NCO	NCO	NCO	NCO	NCO	NCO
Front fog lamps	-	-	S	S	S	S
Side mirror turn indicators	-	-	-	-	S	S
Side Steps	-	-	-	-	S	S
Privacy Glass ⁷	-	-	-	-	S	S
Roof carry bar rails	S	S	S	S	S	S
Towpack - standard 1600kg ²	O/A	O/A	O/A	O/A	O/A	O/A
Instrumentation and controls						
Interior Command Centre (ICC)	S	S	-	-	-	-
Premium ICC with dual zone climate control, large colour screen and trip computer	-	-	S	S	S	S
Trip computer (Including: trip time, fuel used, average fuel economy, instantaneous fuel economy, average speed, distance to empty).	S	S	S	S	S	S
Cruise control with steering wheel mounted controls	S	S	S	S	S	S
Leather wrapped steering wheel	-	-	S	S	S	S
Comfort and convenience						
Air-conditioning	S	S	-	-	-	-
Automatic climate control with dual-zone temperature control	-	-	S	S	S	S
Front and rear power windows	S	S	S	S	S	S
Automatic headlamps ON/OFF feature	S	S	S	S	S	S
Power adjustable side mirrors	S	S	S	S	S	S
Power adjustable pedals	-	-	-	-	S	S
Electrochromatic rear vision mirror (auto-dimming)	-	-	-	-	S	S
Remote keyless entry with two remote control flip keys	S	S	S	S	S	S
Seating						
5 seat capacity	S	S	NCO	NCO	NCO	NCO
7 seat capacity	O	O	S	S	S	S
Adjustable driver's seat lumbar support	S	S	S	S	S	S
Adjustable passenger's seat lumbar support	-	-	-	-	S	S
4-way power driver's seat	S	S	S	S	-	-
6-way power driver's seat with memory	-	-	-	-	S	S
60/40 split fold-down 2nd row seat back	S	S	S	S	S	S
2nd row flat fold seat capability	S	S	S	S	S	S
3rd row flat fold seat capability with 2nd row slide adjustment	O	O	S	S	S	S
Audio and visual						
100 Watt audio system with LCD display screen and single slot CD	S	S	-	-	-	-
Premium audio system with colour screen & 6-disc in-dash CD, 150 watt amplifier & sub-woofer	-	-	S	S	S	S
Alpine rear DVD system including a 10.2" screen, 2 wireless headphones and remote control ⁸	-	-	-	-	S	S
3 x auxiliary power sockets	S	S	S	S	S	S

NCO = No Cost Options that can be ordered before a vehicle is manufactured. - = Not available.

4. Approximate kerb (unladen) mass based on standard specification with a full tank of fuel and no occupants or luggage. 5. Approximate kerb (unladen) mass based on standard specification with a full tank of fuel and no occupants or luggage and where 3rd row seat is fitted. 6. Set of four. 7. For rear passenger and back windows. 8. Accessory iPod/MP3 audio input not available with Alpine rear DVD system.

Specifications and options (continued)

	TX RWD	TX AWD	TS RWD	TS AWD	Ghia RWD	GhiaAWD
Safety and security						
Intelligent Safety System	S	S	S	S	S	S
Dual-stage driver and front passenger airbags	S	S	S	S	S	S
Side curtain airbags ⁹	S	S	S	S	S	S
Pyrotechnic seatbelt buckle pretensioners ¹⁰	S	S	S	S	S	S
Advanced restraints module	S	S	S	S	S	S
Crash severity sensor	S	S	S	S	S	S
Driver's seat position sensor	S	S	S	S	S	S
Beltminder system ¹¹	S	S	S	S	S	S
Dynamic Stability Control	S	S	S	S	S	S
Traction Control	S	S	S	S	S	S
Grade Control Logic	S	S	S	S	S	S
Anti-lock Braking System	S	S	S	S	S	S
Electronic Brakeforce Distribution	S	S	S	S	S	S
Reverse sensing system	A	A	S	S	S	S
Reverse camera	-	-	S	S	S	S
Central locking - all doors (including liftgate and rear glass)	S	S	S	S	S	S
Child proof locks - rear doors	S	S	S	S	S	S
Storage						
Minimum of 30 interior storage compartments	S	S	S	S	S	S
Console						
Front trinket bin	S	S	S	S	S	S
Console cup holder x 2	S	S	S	S	S	S
Centre console bin and tray	S	S	S	S	S	S
Removable rear rubbish bin	S	S	S	S	S	S
Tissue holder	S	S	S	S	S	S
Instrument panel						
Glovebox	S	S	S	S	S	S
Instrument panel centre compartment	S	S	S	S	S	S
Instrument panel top tray	S	S	S	S	S	S
Rear and overhead						
Rear load floor compartment- large (wet/dry compartment) ¹²	S	S	-	-	-	-
Rear load floor compartment- small ¹³	-	-	S	S	S	S
Rear quarter trim compartment	S	S	S	S	S	S
Sunglasses holder incorporating reading lamps	-	-	S	S	S	S
3rd row seat storage						
Armrest bin x 2	S	S	S	S	S	S
Cup holder x 2	S	S	S	S	S	S
2nd row seat and door storage						
Map pocket x 2	S	S	S	S	S	S
Rear door expandable drink bottle holder x 2	S	S	S	S	S	S
Centre armrest cup holders x 2	S	S	S	S	S	S
Seat pockets x 2	S	S	S	S	S	S
1st row seat and door storage						
Lockable security drawer - under driver's seat	S	S	S	S	S	S
Handbag compartment x 2	S	S	S	S	S	S
Map pocket x 2	S	S	S	S	S	S
Front door expandable drink bottle holder x 2	S	S	S	S	S	S
Other						
Flat folding load floor	S	S	S	S	S	S
Cargo cover	A	A	A	A	A / S ¹⁴	A / S ¹⁴
Wet/dry reversible rear floor ¹⁵	S	S	-	-	-	-
Jack/handle and wheel chock storage	S	S	S	S	S	S
Cargo Retention Anchorages	S	S	S	S	S	S

S = Standard. O = Factory options that can be ordered before a vehicle is manufactured. A = Accessory that can be added at any time.
NCO = No Cost Options that can be ordered before a vehicle is manufactured. -- = Not available.

9. For front and second row passengers. 10. Driver and front passenger only. 11. Driver and front passenger seats only. 12. Standard when 5 seat configuration is chosen on TS and Ghia. 13. Standard when 7 seat configuration is chosen on TX. 14. Standard on 5 seat models. 15. Standard when 5 seat configuration is chosen on Territory TS and Ghia.

Making your ownership experience even more rewarding

A great car is just the beginning. We support you with a wide range of services that aim to make you one of the most satisfied vehicle owners in Australia.



Territory Ghia AWD shown in Sensation with optional Genuine Ford carry bars and bike carrier.

Speak to your Ford Dealer today about how we can help you make the most out of your vehicle ownership experience.

myFord Roadside Assistance.

Our commitment to your complete satisfaction plays a major role in everything we do. That is why we provide myFord Roadside Assistance for all Ford Territory models. Wherever and whenever you need emergency roadside assistance, help is available 24 hours a day, 365 days a year. If your vehicle breaks down and cannot be repaired, we will organise to transport your vehicle to the nearest Ford Dealer or approved service centre for repair. myFord Roadside Assistance is valid for 1 year from the vehicle's first registration.

3 year/100,000km new car warranty.*

For three years or 100,000km, whichever comes first, your Ford is covered against any defects in factory materials or workmanship. This also applies to Genuine Ford Accessories you may have had fitted before you took delivery.

5 year warranty against perforation corrosion.*

It's reassuring to know that the original body of your gleaming new Ford is guaranteed against perforation corrosion for the first five years of its life. If perforation corrosion occurs, we'll fix it for free.

myFord Warranties & Insurance.

When you first turn the key of your brand new Ford Territory you want to do so without a care in the world. Our range of myFord products gives you that extra peace of mind. For more information about myFord Warranties and Insurance, visit your participating Ford Dealer for further details on the plans that best suit your needs. Terms, conditions and eligibility criteria apply.

Want to contact us?

For answers to your questions, or help with any concern, contact our Customer Relationship Centre on 13 FORD (13 3673).

Running a fleet?

Our Ford Business Centre is available to assist fleet customers with information on Ford products and services. Call 1300 13 13 30.

Visit us on the web.

If you want more information on Ford or our entire product range, visit us on the Internet at ford.com.au.

#Conditions and exclusions apply. See your authorised Ford Dealer for details.

This brochure is designed to provide you with a general introduction to the Ford Products (including available optional equipment) referred to, and should be read in conjunction with the latest specification sheet. Because of changes in conditions and circumstances Ford* reserves the right, subject to all applicable laws, at any time, at its discretion, and without notice, to discontinue or change the features, designs, materials, colours and other specifications and the prices of their products, and to either permanently or temporarily withdraw any such products from the market without incurring any liability to any prospective purchaser or purchasers. The latest specification sheet should be referred to for information on the availability, ordering and use of optional equipment. Always consult an authorised Ford Dealer for the latest information with respect to features, specifications, prices, optional equipment and availability before deciding to place an order. *FORD MOTOR COMPANY OF AUSTRALIA LIMITED. (A.B.N. 30 004 116 223) Registered Office: 1735 Sydney Road, Campbellfield, Victoria 3061, Australia. Printed October, 2010. TERRI0019_eb



Click to Request



Quote



Hot Deals



Test Drive



ford.com.au