

Jeep

Cherokee





Purpose built.

Whether you're out for an adventure or driving in city streets, Jeep® Cherokee is built to deliver. It keeps you going with world-class Jeep brand capability that's paired with a very long list of standard and available premium features. Choose from two Cherokee models, the playful Sport or the well-appointed Limited and outfit them with innovative features such as the exclusive Sky Slider™ roof and Uconnect™ Media Centre 731N navigation radio.



URBAN SOPHISTICATION. Cherokee will exceed your expectations for exceptional sophistication and luxury. Cherokee Limited's standard premium interior features detailed tailoring on the centre console, front grab handle and front door armrests as well as a leather-wrapped steering wheel with cruise and audio controls. Adding to your comfort levels are heated driver and front-passenger seats with power adjustment and climate control air conditioning at your fingertips.

Cherokee Limited shown in Bright Silver



The enduring standard for peak off-road capability.

Jeep® Cherokee remains true to its adventurous roots, equipped with authentic components that give you the freedom to go anywhere and do anything. Whether you venture into territories unknown, plunge through a rushing river,⁽¹⁾ or head out onto roads buried in thick mud, Cherokee's unmatched capability holds true for all who take the wheel.

Cherokee's standard 4WD system, Selec-Trac® II, boasts world-class 4WD performance due to its unmitigated strength and real-time traction response. Selec-Trac II is constantly adjusting to road conditions to produce optimum grip on the road at all times. Should traction loss occur, Selec-Trac II immediately gives power to the wheels with the most grip.

The standard Hill Start Assist (HSA) will momentarily hold brake pressure as you climb, fighting vehicle rollback and eliminating the need for two-footed driving in many on and off-road situations. The Hill Descent Control (HDC) assists when travelling down a slope by mimicking the mighty Wrangler Rubicon's 4LO crawl ratio using automatic braking and allowing the driver to smoothly descend hills in a slow and controlled manner.

Engine options.

The standard 3.7-litre V6 petrol engine produces a robust 151 kW and 314 N.m of torque at 4,000 rpm, for a generous dose of power at the engine's low end that provides more pull when the going gets tough. Option up to the ultra-efficient and economical 2.8-litre CRD Turbo Diesel engine with 460 N.m of torque delivered between 1,600 - 2,600 rpm. When you head for the higher peaks, Cherokee works impressively to make sure you make it up or over.



Off-road performance.

Jeep vehicles are designed to perform in a variety of off-road conditions identified by five performance categories.



ARTICULATION.

The ability to keep tyres in contact with the ground when climbing over large obstacles.



TRACTION.

Transferring power to the road or trail with the ability of the suspension to keep the wheels in contact with the terrain.



MANEUVERABILITY.

The ability to navigate around obstacles that are tightly situated.



GROUND CLEARANCE.

Driving over logs or large obstacles in combination with approach/departure/breakover angles.



WATER-FORDING⁽¹⁾.

The ability to cross a specific depth of water at a specific speed.

(1) Do not attempt water fording unless depth is known to be less than 500 mm. Traversing water can cause damage that may not be covered by the new vehicle warranty. Always off-road responsibly in approved areas.



BE BOLD. Cherokee's aggressive ground clearance and approach/breakover/departure angles give you permission to take on rugged terrain.



BE ARTICULATE. A flexible suspension system and a tight turning diameter help keep you grounded and grabbing terra firma.



POSSESS PRECISION. An optimised wheelbase combined with rack-and-pinion power steering smooths out the road below for a very controlled and even ride.

SELEC-TRAC® II: 4WD AUTO, 4-LOW. Full-time active "on-demand" capability instantly increases or decreases torque between front and rear axles.



Jeep Cherokee Sport.

SPORT. Cherokee comes standard with the powerful 3.7-litre V6 engine with Electronic Throttle Control (ETC). The available refined and extremely capable Euro 5 compliant 2.8-litre CRD Turbo Diesel Engine is equipped with a diesel particulate filter. Both engines are matched with the standard Selec-Trac® II for full-time 4WD action, which gives you four-wheel drive capability "on demand", based on real-time driving conditions. With standard power-assisted rack-and-pinion steering, independent front suspension and five-link rear suspension, Sport delivers a pleasing blend of nimble cruising comfort and road manners.

Equip Sport with a towing pack, one of several Genuine Jeep Accessories that are perfectly tailored for Cherokee. When properly equipped, Cherokee can tow up to 2,270 kg.

Jeep Cherokee is the perfect blend of comfort and capability you need for your next adventure.



Cherokee Sport shown in Bright Silver



FEAR NO MUD WITH A REVERSIBLE CARGO TRAY.

One side is carpeted and the other side reveals a 63.5 mm deep washable cargo tray perfectly designed to transport your muddiest sporting gear.

CHEROKEE SPORT: FEARLESS FRIEND.

Sport's standard features include 16-inch aluminium wheels, Electronic Stability Control (ESC)⁽¹⁾, Selec-Trac® II full-time 4WD system, Hill Start Assist (HSA), Hill Descent Control (HDC), power-adjustable heated manual-folding exterior mirrors, leather-wrapped steering wheel with cruise and audio controls, premium cloth seats with Stain Repel[®], fold-flat front-passenger seat, Uconnect™ Phone[®] with Voice Command⁽⁴⁾ and ParkSense[®] rear park assist system.

(1) No system, no matter how sophisticated, can repeal the laws of physics or overcome careless driving actions. Performance is limited by available traction, which snow, ice and other conditions can affect. When the ESC warning lamp flashes, the driver needs to use less throttle and adapt speed and driving behaviour to prevailing road conditions. Always drive carefully, consistent with conditions. Always wear your seat belt. (2) Not compatible with aftermarket fabric-protecting coatings. (3) Requires Bluetooth enabled phone. See your dealer for a current list of compatible mobile phones and any limitations your phone may have. (4) Requires Uconnect Phone.





Cherokee Limited shown in Blackberry Pearl

Jeep Cherokee Limited.

LIMITED. Begin with Limited's available and very inviting leather-trimmed interior, heated driver and front-passenger seats, and eight amplified speakers plus subwoofer. Option up to the Uconnect voice-activated Media Centre 731N navigation radio and you'll always have help finding your way through city streets and country roads to reach your destination on time.

BIG, BOLD, OPEN-AIR SKY SLIDER™

The Sky Slider full-length, fully retractable roof opens up to reveal a massive 838 x 1,524 mm window to let you see straight into the atmosphere. It opens front to back, back to front, or any position in between.



CHEROKEE LIMITED: REFRESHINGLY REFINED.

Limited's standard features include 18-inch polished aluminium wheels, chrome side roof rails, grille and body side mouldings, premium leather-trimmed seats with heating, automatic halogen headlamps, rain-sensing automatic wipers, eight premium ∞Infinity® speakers, 368-watt amplifier and subwoofer, Jeep Memory System for drivers seat, radio presets and exterior driver side mirror for two drivers and optional Sky Slider™ full-length, fully-retractable roof.

PLAY ROOM. Cherokee offers very flexible seating and cargo option. With the rear seat up, Cherokee provides 419-litres of cargo space expands to a maximum 1,404-litres with the 60/40 split-folding rear seats folded down.





Cherokee puts your safety first.

Cherokee's robust set of safety and security systems gives you and your passengers peace of mind when travelling on the road. The standard air bag system includes side-curtain and advanced multi-stage driver and front-passenger air bags⁽¹⁾. The supplemental side-curtain air bags with roll-sensing technology add safety for outboard occupants.

ELECTRONIC STABILITY CONTROL (ESC).⁽²⁾ A vehicle-wide network of safety sensors provides instant aid when it detects that you're veering off your intended path. ESC integrates a four-wheel anti-lock brake system (ABS), All-Speed Traction Control (ASTC), a Brake Assist system that automatically helps provide increased braking power in emergency situations, Brake Lock Differentials that enhances side-to-side traction control, and Electronic Roll Mitigation (ERM) that can apply appropriate braking to necessary wheels when sharp steering actions and/or impending wheel lift is detected.

FRONT-SEAT ACTIVE HEAD RESTRAINTS. A standard safety feature that can help stave off neck injuries. Restraints automatically react and deploy to help provide protection during rear-impact collisions.

REAR PARK ASSIST SYSTEM.⁽³⁾ This system helps bring previously hidden rear objects to your attention with an audible and visual warning.

TYRE PRESSURE WARNING LAMP. This standard warning lamp is provides notification of high or low pressure on individual tyres via an instrument panel readout.

(1) Always sit properly in the seat with the seat belt fastened. Always observe the passenger air bag indicator lamp to determine if the Occupant Classification System (OCS) is appropriate. Children 12 and under should always be in the backseat correctly using an infant or child restraint system or the seat belt positioned correctly for the child's age and weight. (2) No system, no matter how sophisticated, can repeal the laws of physics or overcome careless driving actions. Performance is limited by available traction, which snow, ice and other conditions can affect. When the ESC warning lamp flashes, the driver needs to use less throttle and adapt speed and driving behaviour to prevailing road conditions. Always drive carefully, consistent with conditions. Always wear your seat belt. (3) Always check entire surroundings before reversing.



Stay connected to the people, music and devices that matter most.

Uconnect™ keeps you in touch with the people, music and devices that matter most. It acts as a hub for your most important media i.e. mobile phone, navigation system and MP3 player.



PHONE. Uconnect Phone⁽⁴⁾ is an in-vehicle, voice-activated communication system that allows you to pair up to 7 Bluetooth compatible phones and then talk virtually hands-free. The system is clever enough to synchronise with your phone's address book with up to 1,000 entries.



VOICE COMMAND. It simplifies driving by letting you keep your eyes on the road and your hands on the wheel. Vocally select radio stations and record memos. This smart system technology can also be trained to better recognise your voice and can understand commands in Dutch, English, French, Italian, and Spanish.



ENTERTAINMENT. Manage all of your media with six ways to access audio, including an integrated 30 GB hard drive built into the radio, iPod control, Voice Command and Bluetooth streaming audio, which allows you to play digital audio files (available on Limited only).



NAVIGATION.⁽⁵⁾ Enjoy safe travels with the available GPS Navigation, providing voice guidance and visual display. It can also locate nearby petrol stations, restaurants, shopping, hospitals or points of local interest (available on Limited only).

(4) Must use Bluetooth compatible phone. See your dealer for a current list of compatible phones and any limitations your phone may have. (5) Never program while driving. GPS mapping may not be detailed in all areas or reflect current road regulations. See dealer for details.

Trim, Wheel & Paint Guide

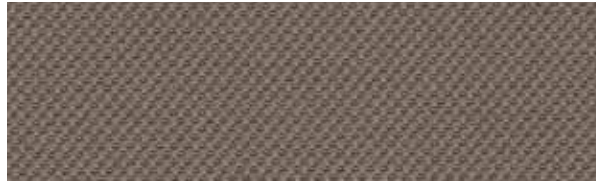
Trim.

SPORT

Meridian/Wallace II Stain Repel⁽¹⁾ premium cloth



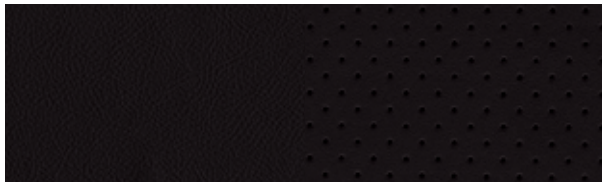
Dark Slate Grey



Pastel Pebble Beige

LIMITED

Axis Perforated McKinley Leather/McKinley leather trim⁽²⁾



Dark Slate Grey



Dark Saddle

Wheels.



SPORT

16-inch Aluminium with Mineral Grey Accents
> Standard on Cherokee Sport



LIMITED

18-inch aluminium with polished finish
> Standard on Cherokee Limited

Note: Due to occasional printing irregularities, the colours shown may vary from actual hues.
(1) Short production run of colours due to unforeseen circumstances in the 2011 Japan disasters.
(2) Late availability of colours due to unforeseen circumstances in the 2011 Japan disasters.

Deep Cherry Red⁽¹⁾

Deep Molten Red⁽²⁾

Bright White

Bright Silver

Light Sandstone

Natural Green

Dark Charcoal

Blackberry Pearl⁽¹⁾

Black⁽²⁾

Brilliant Black⁽¹⁾

Specifications

POWERTRAIN

Engine	3.7L Petrol V6	2.8L CRD I-4 Turbo Diesel
Displacement (cc)	3,700	2,768
Power (kW @ rpm)	151 @ 5,200	147 @ 3,600
Torque (N.m @ rpm)	314 @ 4,000	460 @ 1,600 - 2,600
Service Interval, Primary (km)	12,000	10,000
Fuel System	Sequential multipoint electronic fuel injection	Common-Rail Direct Injection, 1,800 bar
Fuel Economy Combined/Urban/Extra-Urban	12.4/17.4/9.4	7.9/9.2/6.9

TRANSMISSION

4-speed automatic with overdrive and lockup torque converter; electronically controlled _____ Std 3.7L V6
 5-speed automatic with overdrive, electronic governor, electronically-controlled torque converter clutch _____ Std 2.8L CRD

FOUR-WHEEL-DRIVE SYSTEM (TRANSFER CASE)

Selec-Trac® II MD256 active full-time transfer case

2-speed with 2WD and 4WD auto high range, low range (2.72:1) and neutral; variable with 48/52 front/rear - default torque split; electronically-controlled pack coupling in centre differential; open front and rear differentials _____ Std

CAPACITIES/WEIGHTS/TOWING (KG UNLESS OTHERWISE SPECIFIED)

Fuel Tank (L)	
3.7L V6	73.8
2.8L CRD I-4	70.0
Base Kerb Weight	
3.7L V6	1,935 - 2,040
2.8L CRD I-4	1,989 - 2,093
Maximum Gross Vehicle Weight Rating	
3.7L V6	2,540
2.8L CRD I-4	2,540
Towing Capacity (with/without load levelling hitch)	2,270 - 1,600
Tongue Load Limit (with/without load-levelling hitch)	227/160

BODY/SUSPENSION/CHASSIS

Body Design

Uniframe construction: all-steel body sheet metal and frame structural members welded and bonded into a single unit _____ Std

Suspension

Independent Short/Long Arm (SLA) with cast-iron lower and forged steel upper A-shaped control arms; coil springs; stabiliser bar; low-pressure gas-charged shock absorbers; 1,247 kg gross axle weight rating _____ Front
 Five-link solid axle with tubular track bar, upper and lower trailing control arms; coil springs; stabiliser bar low-pressure gas-charged shock absorbers; 1,451 kg gross axle weight rating _____ Rear

Steering

Power-assisted rack-and-pinion

Overall Ratio 2-door/Unlimited _____ 17.4:1
 Turns (lock-to-lock) _____ 3.4
 Turning diameter (m) (kerb-to-kerb) _____ 10.8

Brake System

Front power-assisted; ventilated disc brakes; rotor diameter (mm) _____ 302
 Rear power-assisted; solid disc brakes; rotor diameter (mm) _____ 316

BODY/SUSPENSION/CHASSIS (continued)

Electronic Stability Control (ESC)⁽¹⁾

Four-channel, four-wheel anti-lock with active wheel-speed, vehicle-speed, steering-wheel angle, yaw-rate and lateral-acceleration sensors, vehicle stability management with two-stage activation swtich, All-Speed-Traction Control (ASTC), Brake Lock Differentials (BLD), Brake Assist, Electronic Roll Mitigation (ERM), Hill Start Assist (HSA) and Electronic Brake Distribution (EBD) _____ Std.

Hill Descent Control

Std.

INTERIOR DIMENSIONS (mm unless otherwise specified)

Head Room, front/rear	1,024/1,027
Leg Room, front/rear	1,036/982
Shoulder Room, front/rear	1,449/1,436
Hip Room, front/rear	1,338/1,229
Cargo Volume (L), rear set up/folded	419/1,404
Seating Capacity	5

EXTERIOR DIMENSIONS (mm unless otherwise specified)

Length

Wheelbase	2,694
Overall Length	4,493
Overhang, front/rear	744/1,055

Width

Body width	1,839
Track, front/rear	1,549/1,549

Height with/without roof rack side rails

1,797/1,736

Ground Clearance (at base kerb weight) front/rear

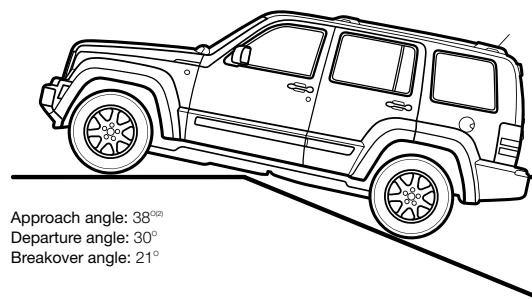
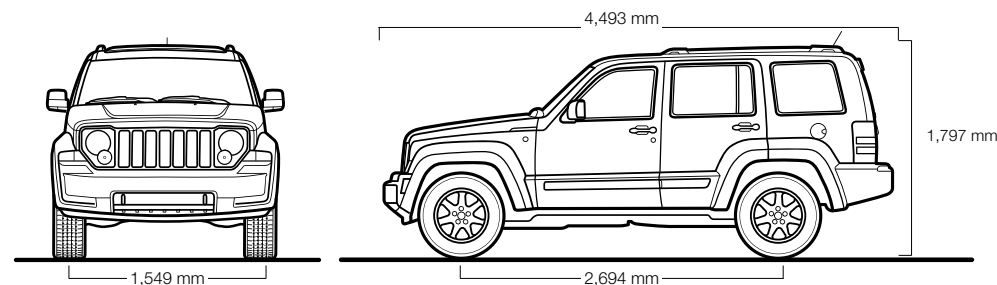
189/196

Approach Angle⁽²⁾/ Departure Angle

38°/30°

Breakover Angle

21°



(1) No system, no matter how sophisticated, can repeal the laws of physics or overcome careless driving actions. Performance is limited by available traction, which snow, ice and other conditions can affect. When the ESC warning lamp flashes, the driver needs to use less throttle and adapt speed and driving behaviour to prevailing road conditions. Always drive carefully, consistent with conditions. Always wear your seat belt.

(2) Specification shown with air dam removed. With air dam in place approach angle is 35°

Features and Options

CAPABILITY		Sport	Limited
Powertrain	3.7L SOHC V6 engine with 4-speed automatic transmission	•	•
	2.8L I-4 CRD engine with 5-speed automatic transmission		○
Four-Wheel Drive System	Selec-Trac® II MD256, active full-time transfer case	•	•
Diesel Particulate Filter	Packaged with 2.8L CRD		P
Hill Descent Control (HDC)		•	•
Hill Start Assist (HSA)		•	•
EXTERIOR			
Lighting	Halogen headlamps, centre high-mounted stop lamp (CHMSL)	•	•
	Automatic headlamp controls	•	•
	Fog lamps, integrated into headlamp module	•	•
Mirrors - Exterior	Power heated foldway	•	•
Tyres	P235/70R16 Goodyear Eagle RS-A all-season performance	•	•
	P235/60R18 Goodyear Eagle RS-A all-season performance		•
	P235/65R17 Goodyear Eagle RS-A all-season performance		○
Wheels	16-inch aluminium with mineral grey accents	•	•
	17-inch aluminium with silver accents		○
	18-inch polished aluminium		•
INTERIOR			
Air Conditioning	Automatic temperature controls (ATC) with air filtration	•	•
Cargo Area	Reversible floor panel with storage tray, under floor storage bin and four cargo tie-down loops in floor	•	•
Console	Floor console with two front and two rear cup holders, rear seat outlets and storage bin with removable upper storage tray	•	•
Electronic Vehicle Information Centre (EVIC)	Includes temperature and compass gauge; traveller/mini trip computer; Tyre Pressure Monitoring (TPM)	•	•
Floor Mats	Carpet, front and rear	•	•
Lighting	Instrument panel courtesy, cargo compartment, front map/dome and rear dome lamps	•	•
Memory System	Controls driver's seat, radio presets and exterior driver-side mirror for 2 drivers	•	•
Mirrors	Rearview, auto-dimming with microphone	•	•
Power Accessory	12-volt auxiliary power outlet, front, located in instrument panel	•	•
Remote Keyless/Illuminated Entry	Includes two transmitters	•	•
Roof	Power sunroof with one-touch open/close and vent feature		○
	Sky Slider™ full length, fully retractable, multi-position roof with express open/close		○
	Black side roof rails (packaged in Off-Road Group)	P	
	Bright side roof rails		•
Seating	Low-back reclining buckets with cloth seats with Stain Repel ⁽¹⁾	•	•
	Low-back reclining buckets monotone leather-trimmed		•
	Fold-flat front-passenger seat	•	•
	Six-way power driver and two-way front-passenger	•	•
	Driver lumbar adjustment	•	•
	Heated front seats	•	•
	Rear 60/40 split-folding, reclining bench	•	•

INTERIOR (CONTINUED)		Sport	Limited
Steering Wheel	Jeep brand, leather-wrapped with multi-function controls and Satin Silver spokes	•	•
	Jeep brand, leather-wrapped with multi-function controls and Driftwood spokes		•
Windows	Power with driver's one-touch auto-down	•	•
	Power with driver's one-touch auto-up/down and front-passenger one-touch auto-down		•
Wipers	Windshield, two-speed with variable intermittent mode	•	•
	Windshield, rain-sensing automatic		•
	Rear window, wiper/washer with intermittent mode	•	•
SAFETY AND SECURITY			
Air Bags⁽²⁾	Advanced multi-stage, driver and front-passenger	•	•
	Supplemental side-curtain with roll-sensing technology for outboard occupants	•	•
Brakes	4-wheel disc anti-lock brake system (ABS)	•	•
Electronic Stability Control (ESC)⁽³⁾	Includes Brake Assist, All-speed Traction Control (ASTC), Electronic Roll Mitigation (ERM), Hill Start Assist (HSA), Electronic Brake Distribution (EBD) and Brake Lock Differentials (BLD)	•	•
ParkSense⁽⁴⁾ Rear Park Assist System	With visual and audible sensors	•	•
Security Alarm	Monitors doors, liftgate, bonnet and ignition circuit	•	•
Sentry Key⁽⁵⁾	Anti-theft engine immobiliser	•	•
Tyre Pressure Monitoring (TPM) Display System	Located in EVIC	•	•
Tyre Pressure Monitoring (TPM) Warning System	Located in instrument cluster		•
UCONNECT MULTIMEDIA			
Audio System	4 speakers	•	•
	∞Infinity ⁽⁶⁾ premium audio system with 8-speakers, 368-watt amplifier and subwoofer		•
Media Centre Radios	Media Centre 135 CD/DVD/MP3 radio with audio jack	•	•
	Media Centre 431 CD/DVD/HDD with 16.5 cm touch screen, 30GB hard drive radio - (6,700 song capacity), Voice Command ⁽⁶⁾ and audio jack		•
	Media Centre 731N CD/DVD/HDD/NAV radio with 16.5 cm touch screen, GPS Navigation, 30GB hard drive (4,250 song capacity), Voice Command ⁽⁶⁾ and audio jack		P
Uconnect Phone⁽⁶⁾	Hands-free communication system with Address Sync, Bluetooth and Voice - Command ⁽⁶⁾	•	•
PACKAGES			
Navigation and Sound Group	Media Centre 731N CD/DVD/HDD/NAV radio with 16.5 cm touch-screen, GPS Navigation, ⁽⁵⁾ 30GB hard drive (4,250 song capacity), Voice Command ⁽⁶⁾ and audio jack		○
Off-road Group	Transmission, fuel tank, transfer case and front suspension skid plates (includes black side roof rails on Sport)	○	○

• = Standard ○ = Optional P = Available within package noted

(1) Not compatible with aftermarket fabric-protecting coatings. (2) Always sit properly in the seat with the seat belt fastened. Always observe the passenger air bag indicator lamp to determine if the Occupant Classification System (OCS) is appropriate. Children 12 and under should always be in the backseat correctly using an infant or child restraint system or the seat belt positioned correctly for the child's age and weight. (3) No system, no matter how sophisticated, can repeal the laws of physics or overcome careless driving actions. Performance is limited by available traction, which snow, ice and other conditions can affect. When the ESC warning lamp flashes, the driver needs to use less throttle and adapt speed and driving behaviour to prevailing road conditions. Always drive carefully, consistent with conditions. Always wear your seat belt. (4) Never program while driving. GPS mapping may not be detailed in all areas or reflect current road regulations. See dealer for details. (5) Requires Uconnect Phone. (6) Must use Bluetooth[®] compatible phone.



GENUINE ACCESSORIES BY MOPAR



CHROME NUDGE BAR. Add style and practicality to your Cherokee with this heavy-duty stainless steel nudge bar. Nudge bars help protect the front end of your vehicle from minor bumps and scratches.



CHROME TUBULAR SIDE STEPS. Extra-wide stepping surfaces to help prevent slipping, while offering easier entry and exit in style.



TOW BAR KIT.⁽¹⁾ This towing kit includes tow bar, tongue, tow ball and wiring harness.



UCONNECT™ MEDIA CENTRE 731N.

Provides entertainment, information, communication and navigation all through a CD/DVD/HDD/NAV radio. A 30 GB drive lets you store photos, playlists and maps, as well as rip, stash, organise and shuffle up to 4,200 music files from CDs, integrated USB port or exterior input jack.

(1) Check Owner's Manual for load capacity and heavy-duty equipment required. Do not exceed rated tow capacity of the vehicle as equipped.

**For a full accessories range brochure
visit your dealer or jeep.com.au**

Jeep
jeep.com.au

All product illustrations and specifications are based upon current information at the time of publication approval. Although descriptions are believed correct, accuracy cannot be guaranteed. Chrysler Group LLC reserves the right to make changes from time to time, without notice or obligation, in prices, specifications, colours, materials and to change or discontinue models. See your dealer for details. Jeep, Cherokee, Mopar, Selec-Trac, Sentry Key and the Jeep Grille are registered trademarks and Uconnect and Sky Slider is a trademark of Chrysler Group LLC. All rights reserved.

Printed in Australia SBKK2011 05/11